

LONG ISLAND UNIVERSITY

2007

WOMEN'S SOCCER



2006 NEC CHAMPIONS



2006 Northeast Conference Champions



NORTHEAST
CONFERENCE
NEC



2006

WOMEN'S SOCCER

CHAMPIONS



Behind the Scenes

With the Blackbirds



General Information

Founded..... 1926
 Enrollment..... 11,000
 Nickname Blackbirds
 Colors Black and Silver
 Conference..... Northeast
 Home Field/Capacity LIU Field/500
 SurfaceField Turf
 Athletics Web Site www.liuathletics.com
 President David J. Steinberg
 Provost Gale Stevens Haynes
 Director of Athletics..... John Suarez
 Senior Associate AD/ SWA..... Margaret Alaimo
 Head Athletic Trainer Danny O'Connor
 Athletic Department Phone (718) 488-1030
 Athletic Department Fax (718) 488-1669

Coaching Staff

Head Coach Tracey Bartholomew
 Alma Mater, Year..... Rochester, 1994
 Overall Record (Years)..... 61-66-6 (7)
 Record at LIU (Years)..... same
 E-mail tbarthol@liu.edu
 Assistant Coach (Years)..... Amphone Keovongmansar (7)
 Graduate Assistant (Years) .. Jackie McCormick (first season)
 Soccer Office Phone (718) 488-3496

Team Information

2006 Overall Record 13-8-1
 2006 Conference Record/Finish 8-1/1st
 Starters Returning/Lost 6/5
 Letterwinners Returning/Lost 14/8
 Leading Returnees
 Catie Blake, Sr., D..... 0 goals, 1 assist
 Amy Paige, Sr., D 0 goals, 2 assists
 Caley Troutman, Sr., F 5 goals, 1 assist
 Aly Hanson, So., F 9 goals, 1 assist

History

First season..... 1997
 All-Time Record..... 80-100-10
 NCAA Appearances 2
 Last NCAA Appearance 2006

Athletic Media Relations

Assistant AD/Media Relations Jeff Mead
 Women's Soccer Contact
 Phone..... (718) 488-1420
 E-mail jeff.mead@liu.edu
 Assistant Director of Media Relations Shawn Sweeney
 Phone..... (718) 488-1307
 E-mail shawn.sweeney@liu.edu
 Media Relations Asst. Dan Lobacz
 Phone..... (718) 488-1000 ext. 3026
 E-mail daniel.lobacz@brooklyn.liu.edu
 Media Relations Fax (718) 488-3302
 Mailing Address One University Plaza
 Wellness Center/Room 214-216
 Brooklyn, N.Y. 11201

Credits

Designed, written and edited by the LIU Athletic Media Relations Office. Printed by William Charles Printing of Plainview, N.Y. Special thanks to Brian Ierardi. Photography by Gene Boyars, Ned Dishman, Mike McLaughlin, Mike Treola, Kathy Kansky. Cover Design by Karyn Olsen.

Table of Contents

Quick Facts/Directions..... 1
 2007 Outlook
 Season Outlook 2
 Coaching Staff
 Head Coach Tracey Bartholomew 4
 Assistant Coaches 6
 Meet the Blackbirds
 Roster..... 7
 Player Profiles 8
 Newcomer Profiles 14
 In Review
 2006 Statistics/Results 18
 Record Book
 All-Time Results..... 19
 Career Records 20
 Single-Season Records 21
 Miscellaneous Team & Individual Records 22
 Year-By-Year Leaders & Award Winners 23
 All-Time Roster..... 24
 Opponents
 2007 Opponents 25
 All-Time Series History 27
 Northeast Conference 28
 Long Island University
 University Administration 29
 Athletics Administration 30
 Athletic Training/Strength and Conditioning 31
 Academics 32

Directions to LIU

Via Subway: Take the M,R (local) or B, Q (express) to DeKalb Avenue or take the 2, 3, 4 or 5 to Nevins Street. Also, A, C can be taken to Jay St./Borough Hall.
Manhattan via the Manhattan Bridge: Proceed along Flatbush Avenue Extension to Myrtle Avenue and turn left at light. Take Myrtle Avenue to Ashland Place. Turn right onto Ashland Place and proceed to DeKalb Avenue, turning right. Parking garage is first brick building on the right.
From Manhattan via the Brooklyn Bridge: Proceed along Adams Street, making a left onto Tillary St. Turn right onto Flatbush Avenue Extension and make first left at Myrtle Avenue. Turn right onto Ashland Place and proceed to DeKalb Avenue and make a right. Parking garage is first brick building on the right.
From Brooklyn: Belt Parkway to BQE. Take BQE to Cadman Plaza West and proceed to Tillary Street. Turn left on Tillary Street and turn right onto Flatbush Avenue Extension. Make immediate left at light onto Myrtle Avenue. Turn right onto Ashland Place and proceed to DeKalb Ave. and make a right. Parking garage is first brick building on the right.
From Queens/Long Island: Long Island Expressway (495 West) to BQE (278 West) to Tillary Street exit. Turn right onto Flatbush Avenue Extension and make first left at Myrtle Avenue. Turn right onto Ashland Place and proceed to DeKalb Avenue, turning right.
From Staten Island: Take Verrazano Bridge to BQE. See above.
From Northern New Jersey: Take New Jersey Turnpike south to Holland Tunnel to Canal Street East and follow to Manhattan Bridge. See above.
From Southern New Jersey: New Jersey Turnpike north to Exit 10 (Outerbridge Crossing) to 278 East Verrazano Bridge to BQE. Follow directions from Brooklyn.
From New England/Westchester County: Merritt Parkway South or 95 South to the Hutchinson Parkway South and over the Whitestone Bridge. Take 678 South (Van Wyck Expressway) to 495 West (Long Island Expressway). Follow directions from Queens.



The Long Island University women's soccer team enters the 2007 season with the same approach it has had for the previous seasons, except this year the Blackbirds will take the field as the defending Northeast Conference champions. Last year's team posted 13 wins, won the regular-season NEC crown and clinched an NCAA Tournament berth with a 2-0 win over Monmouth on LIU Field. The Blackbirds will embark on this season with the memories of last year fresh in mind, but will look to write a whole new page in the program's history.

"The end of a memorable year is also the beginning of a whole new race," head coach **Tracey Bartholomew** said. "We are thankful for the past and we will use those successes as lessons, but we hope to go on another great journey this year with an unbelievable group of young women."

Bartholomew has built the Blackbirds into one of the strongest programs in the conference. A solid group of veterans return from last season's championship squad, while the coaching staff has assembled one of the largest and most talented groups of newcomers to help LIU again challenge for postseason success.

"Winning the championship last year is just the beginning of what we want to achieve," Bartholomew said. "This year's team will be very competitive. With the talent returning and the number of players we have coming in, the team will work hard and push each other in order to get playing time."



Caley Troutman

Forwards

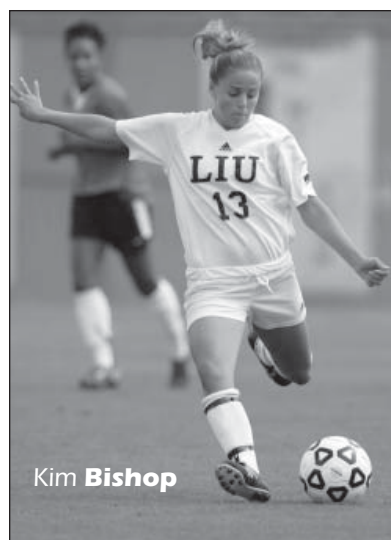
The Blackbirds will have to find a way to replace departed senior Selima Berisha who scored four goals last year and ranks among the career scoring leaders at LIU. Bartholomew is confident in her options up front and feels that new scorers will step up to take the place of the graduates.

"In soccer it only takes scoring one more goal than your opponent," Bartholomew said. "In the past we have always tried to find a way to score and we felt like we can have success. I feel like we have girls that can go out and score for us."

Leading the returnees up front is senior co-captain **Caley Troutman**. A starter in 21 games last year, Troutman scored five goals and added an assist. As the second-leading returning scorer, she will be one of the top candidates to propel the offense. Troutman has the ability to get on the end of services and finish her scoring chances. Her creativity should help her set up more scoring chances this year as well.

Sophomore **Aly Hanson** made an impressive debut last season, earning All-NEC First Team honors. She led the team with 19 points on nine goals and one assist, while ranking second in the league with four game-winning goals. Her speed and tenacity caused headaches for opposing defenses.

The other returning candidates for playing time up front are a trio of sophomores: **Kim Bishop**, **Tasia Davis** and **Jenae' Piper**. Bishop is a versatile athlete and showed promise as a rookie, scoring a hat trick against Wagner. She made 10 starts last year and will be looked upon to step up as a sophomore and take on a larger role.



Kim Bishop

Davis appeared in all 22 games as a freshman, tallying a pair of goals. A hard worker on all aspects of her game, Davis has the ability to set up goals and score.

Piper appeared in 10 games last year, but she could see an increased role playing as a target forward. She possesses a hard shot and plays simple, while displaying a level of creativity that could get her into the lineup as long as she stays healthy.

Bartholomew will also take a look at freshmen **Lara Martinez** and **Samantha Post** to fight for playing time and provide depth in the attack.

"We lost a great class of seniors, but we have talent that can step up and take their place," Bartholomew said. "They might just have to do so a little quicker this year."

Midfielders

In the midfield, LIU lost Allison Andreano, an All-NEC First Team pick, who started all 79 games of her career. The Blackbirds must also find a replacement for Christine Gans who set the single-season school mark with 11 assists last year.

One veteran returning for the Blackbirds is junior midfielder **Christina O'Connor**. She posted three assists last year and scored her lone goal in LIU's semifinals win over Sacred Heart. O'Connor is strong in the air and adept at serving the ball into the penalty area, which should help her pick up some of the scoring load for the Blackbirds.

Junior **Nicole Allen** appeared in 20 games last year and will be a candidate to slide into an increased role this year after making 13 starts. She posted three assists in conference play last year and her experience will be useful in helping the Blackbirds succeed.

Sophomore **Neddie King** made 11 appearances as a rookie and posted one assist. She will seek increased playing time this year, utilizing her field vision.



Christina O'Connor



Bartholomew added a talented group of newcomers to bolster the depth in the midfield. **Amy Rizzo** was a four-year starter on the LIU women's lacrosse team and her leadership and experience playing at the collegiate level will help the younger Blackbirds adjust.

Freshmen **Samantha Hoak**, **Caitlin Meadows**, **Brittany Schandelmayer** and **Kesiah Wattley** all have impressive credentials coming to LIU provide a good mix of size and speed in the midfield.

Defenders

"Defense and our organization along the backline has been our trademark," Bartholomew said. "We will look to continue that strength this year."

The foundation for the program's success will be strong again this year with an experienced group of returnees led by senior co-captain **Catie Blake** and classmate **Amy Paige**.

Blake has been a starter for much of the last two seasons for the Blackbirds and earned All-NEC Second Team honors in 2006. She helped lead a defense that posted 11 shutouts last year, which was a single-season record. One of the team's steadiest defenders, she is strong in the air and added an assist in support of the offense.

Paige is the only returning Blackbird to start all 22 games last season, as she came into her own on the backline. She showed the ability to move forward in the attack, posting a pair of assists. Her serving ability and work rate will be an asset for LIU at both ends of the pitch.

Junior **Kelly O'Connell** has been a starter for much of her first two years. Her experience and ability to challenge opposing forwards will help LIU's defense continue to be successful. Sophomore **Felicia Reynolds** got experience as a rookie playing in five games and will attempt to increase her playing time this year.

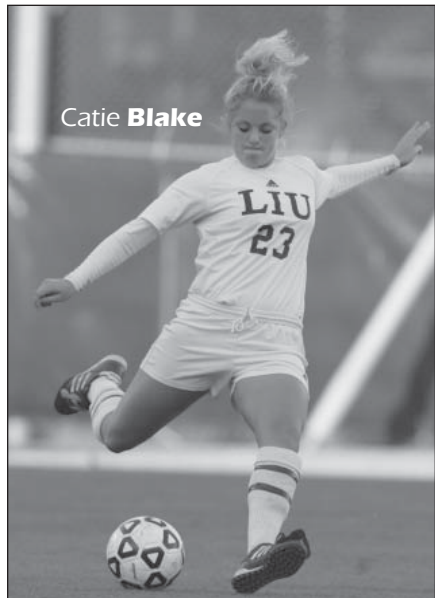
Among the newcomers for LIU is **Eleri Earnshaw**. A graduate student, Earnshaw started 77 games at Iona and is a two-time first team all-conference honoree. Her experience at the collegiate level, as well as with the Welsh National Team, will add a veteran presence to the lineup. Freshmen **Kelly Carter**, **Kayleigh Morgan** and **Christine Jones** will also compete for playing time. Carter helped her club team reach the national finals, while Morgan has played at a high level in England. Jones is also an accomplished track athlete and will bring speed to the lineup.

Goalkeepers

The Blackbirds return a pair of goalkeepers that will be looking to replace Stephanie Kansky, who posted seven shutouts in 21 starts last year.

Senior **Felicia Amaral** is the most experienced, having appeared in 20 career games with 14 starts. She has a 0.70 goals against average during her career. Sophomore **Angela Schumacher** saw limited action as a rookie, but has the ability to push for an increased role with experience.

Junior **Amanda Johnson** and freshmen **Christine DeLashmutt** and **Brittney Rigtrup** will all add competition for playing time between the posts. Johnson played for two years at St. Louis Community College, while DeLashmutt was a four-year starter in high school and Rigtrup has experience at the ODP level.



Catie Blake



Amy Paige

Schedule

Bartholomew has again compiled a strong schedule to prepare the Blackbirds for the rigors of the conference schedule.

"The program's success will be controlled by what the seniors ask of the younger players," Bartholomew said. "We will work to build a team bond between the veterans and the newcomers, which will carry over to success on the field. We will have to work hard to get the most out of our talent in a short period of time."

The Blackbirds will be tested right away, opening the year against Rutgers on Aug. 31. The Scarlet Knights participated in the NCAA Tournament last season and advanced to the championship game of the BIG EAST Tournament. LIU will host NJIT on Sept. 2 before traveling to take on New Mexico and Utah Valley State in Albuquerque, N.M.

Long Island will also host regional foes Lafayette and Columbia before traveling to American and Binghamton. The Blackbirds wrap up the non-conference season on Sept. 30 at home against Siena.

The conference slate opens on Oct. 5 at Monmouth in a rematch of last year's NEC Championship game. LIU will also travel to Mount St. Mary's and Wagner before opening its conference home schedule against Fairleigh Dickinson on Oct. 19.

The NEC Tournament will take place on the campus of the regular season champion. The semifinals will be played Nov. 9, with the championship on Nov. 11.



Felicia Amaral



Head Coach



Tracey Bartholomew

Head Coach • Eighth Season
Rochester, 1994

Since taking over as head coach at Long Island University, Tracey Bartholomew has led the Blackbirds on a steady climb up the ladder in the Northeast Conference. Bartholomew has transformed LIU into a perennial conference power and in 2006 she guided the Blackbirds to their first conference crown under her leadership. With a foundation of success established, Bartholomew and the Blackbirds have visions of future postseason success in their sights.

The 2006 Blackbirds became just the second team in program history to capture an NEC Championship, defeating Monmouth, 2-0, on LIU Field. Long Island advanced to the NCAA Tournament and although a loss to No. 6 Texas ended LIU's season, the Blackbirds set a program-record with an 8-1 mark in NEC play and matched the previous season's record of 13 wins.

"Winning our championship at home last year was a culmination of fantastic senior leadership and the team's commitment to never give up and the desire to win for each other," Bartholomew said of the 2006 NEC Championship. "To be a part of that with such a tremendous group of young women was exhilarating and personally one of the sweetest championships I have ever been a part of as a player and coach."



The Bartholomew File	
Year.....	Overall/NEC
2000 LIU.....	7-11-1/6-3-1
2001 LIU.....	4-12-0/3-7-0
2002 LIU.....	6-13-0/3-7-0
2003 LIU.....	9-9-1/6-3-0
2004 LIU.....	9-7-2/4-3-2
2005 LIU.....	13-6-1/7-1-1
2006 LIU § &.....	13-8-1/8-1-0
Totals (7 seasons)	61-66-6/37-25-4
§ NCAA Tournament & Northeast Conference Champions	

In 2005, Bartholomew guided the Blackbirds to those 13 wins, an 8-0 ledger at home and the final of the NEC Tournament. The squad dropped a hard-fought 1-0 decision to Central Connecticut State, leaving a bitter taste in the mouths of a veteran team.

"After losing in the 2005 championship, we walked off the field and I told the team we would be back. We have been able to build a tradition of winning at LIU with a phenomenal group of young women. They also have shared amazing memories and stories and they have created friendships and bonds that will last a lifetime."

Bartholomew has led the Blackbirds to the postseason on five occasions, including each of the last four years. Among those postseason trips was an appearance in the final of the 2004 ECAC Tournament. The team's growing respect in the region can be attributed to the wins it has compiled, as well as Bartholomew's growing reputation of putting successful teams on the field.

Bartholomew's congeniality has helped the program flourish in multiple ways both on and off the field. Her teams are noted as much for their work ethic during games and practices as they are for the enjoyment they have together away from the field. The student-athletes on Bartholomew's teams have served as perfect role models for the Brooklyn campus due in large part to their mentor.

"I believe in creating a positive and challenging learning environment that encourages them to succeed on and off the field," Bartholomew said. "It's important to set goals, be accountable and to work as a team to have discipline and perseverance."

Bartholomew has coached over 20 All-NEC honorees, multiple players of the week honorees and several NEC





Academic Honor Roll members, including Jackie McCormick who was honored as a Valley National Bank Scholar-Athlete during the 2005-06 season. In 2006 Ashley O'Connor became the first LIU player to earn NSCAA All-Northeast Region honors and Selima Berisha earned a spot on the CoSIDA/ESPN The Magazine Academic All-District 1 Second Team. Bartholomew has also placed players on the Soccerbuzz.com All-Northeast Region teams.

Bartholomew's teams have not only been successful on the field, but are among the top students academically each year. The team posted a cumulative 3.38 grade point average last year, after posting a 3.46 GPA in 2005, which was a new high under Bartholomew. The program garnered a 3.38 GPA at the conclusion of the 2004 season and had a 3.34 GPA in 2000 (fifth in the country), 3.33 in 2002 (12th) and 3.21 in 2001.

Bartholomew has served as a member of the National Soccer Coaches Athletic Association Northeast Region Ranking Committee since 2002. She also was on the NCAA Northeast Region Ranking Committee from 2003-04. She has been an advanced personal trainer with the National Council on Strength and Fitness since the summer of 2004.

A native of Hilton, N.Y., Bartholomew arrived at LIU following a successful five-year run as an assistant coach at Colgate. During that span, the Red Raiders captured five Patriot League titles and earned three trips to the NCAA Tournament. She was responsible for all aspects of the program, including recruiting, game strategy and running practices.

Bartholomew spent her summers working as an instructor at soccer camps for young adults and college-bound players of both genders. She was the assistant director of Colgate's Soccer Fit Academy for five years, and has also been a head coach at the U.S. Military Soccer Camp and the Syracuse University Soccer Camp, and a staff member at the University of Rochester Soccer School.

For eight years Bartholomew was under the tutelage of some of the premier goalkeeper coaches in the nation, including Matt Clark, Bernie Watt, Joanie Schokow and former U.S. Women's National Team coach Tony DiCicco.



Prior to her experience at Colgate, Bartholomew was a four-year letter winner and one of the top Division III goalkeepers in the nation at the University of Rochester. The Yellow Jackets appeared in four NCAA Tournaments with her in goal, including a run to the 1991 NCAA final in which she notched two postseason shutouts. Bartholomew graduated magna cum laude with a Bachelor of Arts degree in psychology and a 3.71 GPA. She also was a member of the school's basketball team.

The successful coach and mentor added to her academic résumé in 2005, earning a Master's of Science in exercise physiology from LIU. She received the Dean's Award with a 4.0 GPA and serves as an adjunct professor in the Health Sciences Department, teaching courses in sports, physical activity and performance, neuroscience and senior project and thesis.



Amphone Keovongmanysar

Assistant Coach • Eighth Season
Worcester State, 1994

Amphone Keovongmanysar returns for his eighth season as the Blackbirds' assistant coach. He will continue to share all coaching responsibilities with head coach Tracey Bartholomew. In addition to his coaching duties, Keovongmanysar was named Outdoor Facilities Coordinator for the athletic department in the spring of 2006.

In addition to his role with the Blackbirds, Keovongmanysar earned an advanced national license from the National Soccer Coaches Association of America in 2001. He obtained the English FA Youth Coaching certificate in 2005.

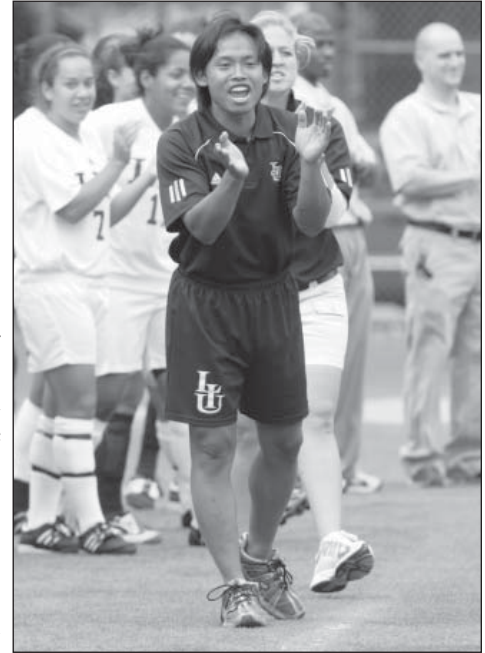
Keovongmanysar also serves as a trainer for the Elmont Retros Stars Under-18 girls team. In November 2004, the multi-talented coach acted as the interpreter for the United States' U-20 Women's National Team at the FIFA U-20 Women's World Cup in Thailand.

Keovongmanysar arrived in Brooklyn from Southbridge, Mass., where he earned a name for himself as one of the most well-respected youth coaches in the commonwealth. From 1997 until 2000, Keovongmanysar was a coach in the Massachusetts Olympic Development Program.

A native of Laos, Keovongmanysar guided the U-13 boys to a district championship in 1997 and coached the U-12 boys team to the district semifinals the following year. Keovongmanysar took on an additional role in 1999, coaching both the U-15 boys and U-13 girls ODP squads. In 2000, he was the assistant director of both the boys' and girls' ODP.

Keovongmanysar was the boys' varsity soccer coach for the Southbridge (Mass.) School Department from 1997-98. He led his team to its first district playoff berth in 17 years during his inaugural season and then to the district semifinals for the first time in his final season.

From 1991-2000, Keovongmanysar was a coach and director of player development for the Southbridge Youth Soccer Association. He organized and implemented year-round soccer programs for children ranging from ages 4-18 and provided clinics for both players and coaches. Keovongmanysar, a Massachusetts certified teacher, earned a Bachelor of Arts degree in history from Worcester State College in 1994.



Jackie McCormick

Graduate Assistant Coach • First Season
Long Island University, 2007

Jackie McCormick begins her first season on the Blackbirds' staff after completing a standout career as a student-athlete at LIU. McCormick is one of the most decorated Blackbirds in the programs history, having competed for LIU from 2002-05.

McCormick is a three-time All-Northeast Conference selection, having earned first team honors in 2004 and 2005. She finished her career second on LIU's all-time scoring list with 55 points on 20 goals and 15 assists.

A four-year starter, McCormick started all but one game during her career and graduated as the leader in games played at 75. An outstanding forward, her name is imprinted among the all-time leaders at LIU and she holds the school-record with 12 game-winning goals.

McCormick capped her career in 2005 by earning All-NEC First Team honors after leading the Blackbirds to a program-best 13-6-1 record and the final of the NEC Tournament. She posted six goals and six assists during that season. Her junior campaign, she tied for the team lead with six goals, including four game-winners, and was named to the All-NEC First Team.

As a sophomore in 2003 she ranked sixth in the NEC with six assists and added six goals enroute to being named All-NEC Second Team.

An all-around talented athlete, McCormick also competed for the women's lacrosse team and earned All-NEC Second Team honors as a senior and is one of just three players in the program's history to compile at least 100 career points.

A graduate of the school's Honors Program, McCormick was a member of the Intercollegiate Women's Lacrosse Coaches Association Division I Academic Honor Roll in 2006. She is currently pursuing her Master's degree in teaching of writing and literature.





Player Profiles



Felicia Amaral
Goalkeeper • 5-7 • Senior
Oxford, Mass.
Oxford

22

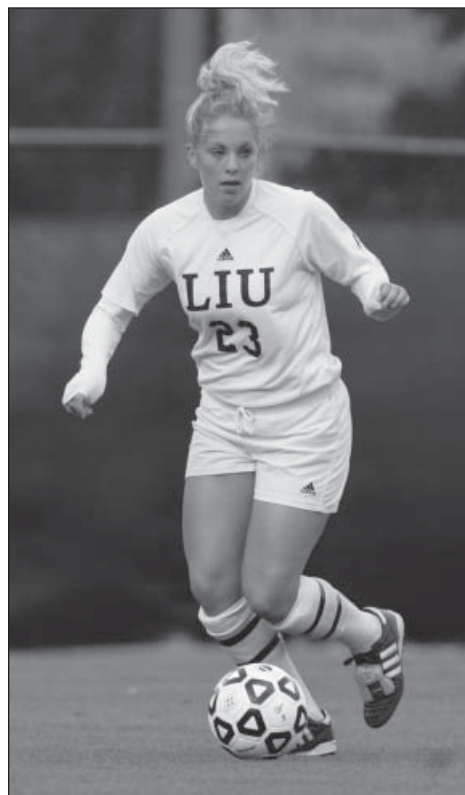
Notes: Possesses the technical ability to make big saves... Very good size and presence in the goal. **2006:** Appeared in five games, posting a 0.83 goals-against-average... Earned her only start of the year, playing the full 90 minutes at Iona (9/24)... Came on as a substitute in four other games, helping LIU post shutouts... Made a season-high three saves against Binghamton (9/17)... Played the second half of a shutout against Wagner (9/28) and made two saves... **2005:** Appeared in 11 games, registering eight starts... Logged 831 minutes between the pipes... Second in the NEC with a 0.76 GAA behind teammate Stephanie Kansky... Recorded shutouts against Rider (8/25), Drexel (9/3) and Stony Brook (9/6)... Had a season- and career-high five saves at Northeastern... Had three or more stops in five games. **2004:** Appeared in four games, making three starts... Registered her first collegiate shutout against Wagner (10/15)... Allowed just one goal in over 231 minutes in net. **Background:** Played three seasons of varsity soccer at Oxford High School... A district and Central Massachusetts All-Star following her senior season... Was captain as a senior and posted nine shutouts... A Southern Worcester County League All-Star and state finalist junior and sophomore seasons... A member of the Massachusetts Premier Soccer League team, Charles River United- U-17 State Champions... Has one younger brother and one younger sister... Born on Dec. 29, 1986... Daughter of Cheryl and Richard Amaral... Majoring in sports sciences.



Catie Blake
Defense • 5-6 • Senior
Southbridge, Mass.
Southbridge

23

Notes: Exceptional defender... Excellent in the air... Tremendous foot skills and touch on the ball... Tactically smart and aware of attackers. **2006:** Appeared in all 22 games, making 21 starts on the backline... Named to the All-Northeast Conference Second Team... A member of the NEC Fall Academic Honor Roll... Assisted on game-winning goal in NEC semifinal win over Sacred Heart (11/3)... Helped Blackbirds defense post 11 shutouts. **2005:** Appeared in 18



contests, making 16 starts... Member of the backfield that allowed a program-low 15 goals... The 15 goals were also tops in the NEC in 2005... Had first career assist in first contest of season, a 1-0 win over Rider... Added an assist in 3-0 victory at Quinnipiac... Also had an assist at Wagner on Oct. 21. **2004:** Appeared in 15 games, making three starts... Member of defense that allowed a league-low 20 goals... Helped solidify a strong LIU backfield. **Background:** A member of the Southbridge team since its inception in 1999... Was awarded

team MVP two straight seasons... A Southern Worcester County League All-Star three straight seasons... A Central Massachusetts All-Star in 2003... Played for the Fuller Hamlets club team... Also a four-year starter in basketball, earning all-league honors... Played tennis two years and earned the Unsung Hero in 2004... Played softball for one season... Daughter of Mel and Peter Blake... Born on Sept. 22, 1986... Majoring in media arts.

Felicia Amaral • Career Statistics

	GP	GS	MIN	S	SHO	GA	GAA	SV%	W-L-T
2004	4	3	231:56	8	1	1	0.39	.889	2-0-0
2005	11	8	831:13	24	3	7	0.76	.774	5-4-0
2006	5	1	217:04	7	0	2	0.83	.778	0-1-0
Totals	20	12	1280:13	39	4	10	0.70	.796	7-5-0

Catie Blake • Career Statistics

	GP	GS	SH	G	A	P	GWG	YC	RC
2004	15	3	0	0	0	0	0	1	1
2005	18	16	1	0	3	3	0	0	0
2006	22	21	3	0	1	1	0	2	0
Totals	55	40	4	0	4	4	0	3	1



Amy Paige
 Defense/Midfield • 5-4 • Senior
 San Jose, Calif.
 Lehigh

18

Notes: Good stamina and power... A key player in backline... Excellent at attacking out of back and serving... Enrolled in LIU Honors Program. **2006:** Started all 22 games... Helped the LIU defense post a school-record 11 shutouts... Assisted on the only goal in a 1-0 win over Sacred Heart (10/8)... Posted an assist in 8-0 win over Delaware State (9/6)... Named to the Fall Northeast Conference Academic Honor Roll. **2005:** Appeared in 17 games with four starts... Member of the back four that etched a school record for fewest goals against in a season (15)... Helped solidify a strong defense. **2004:**



Appeared in all 18 contests with two starts... Registered her first career point, assisting on the game-winner in a 1-0 triumph over Monmouth (9/24)... Scored her first collegiate goal in a win at Saint Peter's (10/9)... Talled an assist in a tie against Quinnipiac (10/29). **Background:** Played three seasons at Lehigh High School... As a senior, tallied 15 goals and nine assists... A first-team all-league honoree for three straight seasons... Earned regional honorable mention... A member of the strong club team, DeAnza Force '85, which captured state cup in 2003... Winner of Scholar Athlete Award and Lehigh Girls Team Most Valuable Player Award... Born on Dec. 18, 1985... Daughter of Beth and Russ Paige... Majoring in biology.



Caley Troutman
 Forward • 5-5 • Senior
 South Park, Pa.
 South Park

8

Notes: Possesses excellent foot skills and agility with her moves... Great vision and accuracy in passing... Played on Century V travel team with former Blackbirds Ashley O'Connor and Christine Gans. **2006:** Appeared in 22 games, starting 21 of them... Second on the team with five goals... Finished with 11 points... Scored first career goal in 2-0 win over Rider (8/31)... Had a pair of goals in 3-1 win over FDU (10/6)... Talled an assist in Northeast Conference semifinal win over Sacred Heart (11/3). **2005:** Appeared in 15 contests with two starting nods... Attempted six shots on the season... Started versus Drexel and Stony Brook. **2004:** Appeared in 17 contests in her first collegiate season... Recorded her first career assist in a win against Central Connecticut State (10/31)... Registered her second career assist in the next game at Fordham (11/12). **Background:** A four-year starter at South Park High School... Registered 23 goals and 11 assists during her senior season... A three-time All-Select member and two-time All-WPIAL selection... A member of the *Pittsburgh Post-Gazette* All-Star team... Talled 65 goals in illustrious career... A member of the Century V U-18 state championship team... Enrolled in the LIU Honors Program... Majoring in education... Born on Oct. 17, 1985... Daughter of Connie and Dave Troutman.



Amy Paige • Career Statistics									
	GP	GS	SH	G	A	P	GWG	YC	RC
2004	18	2	9	1	2	4	0	0	0
2005	17	4	1	0	0	0	0	1	0
2006	22	22	1	0	2	2	0	0	0
Totals	57	28	11	1	4	6	0	1	0

Caley Troutman • Career Statistics									
	GP	GS	SH	G	A	P	GWG	YC	RC
2004	17	0	10	0	2	2	0	0	0
2005	15	2	6	0	0	0	0	0	0
2006	22	21	20	5	1	11	0	0	0
Totals	54	23	36	5	3	13	0	0	0



Nicole Allen
Midfield/Defense • 5-8 • Junior
Spencer, Mass.
David Prouty

12



Kelly O'Connell
Defense • 5-7 • Junior
Rochester, N.Y.
Greece Arcadia

19



Notes: A tenacious, hard-nosed player who is very tough to beat... Mentally one of the toughest athletes on the team. **2006:** Appeared in 20 games... Started 13 contests, tallying three assists... Assisted on the only goal in a 1-0 win over Monmouth (10/27)... Collected assists against both Wagner (9/28) and Quinnipiac (10/13)... Helped LIU post 11 shutouts... Named to the Fall Northeast Conference Academic Honor Roll. **2005:** Appeared in all 20 games with one start... Attempted two shots on the season... Helped team allow a program-

Notes: Tenacious and very athletic player... Brings strong physical play and outstanding 1v1 defending to the squad... Tackles well. **2006:** Appeared in 19 games, starting 10 times... Helped defense post a program-record 11 shutouts... Named to the Fall Northeast Conference Academic Honor Roll. **2005:** In her first collegiate season, started all 20 contests in which she appeared... Solid member of the backfield... Helped to achieve the record-low 15 goals against in school history. **Background:** The 2004 Section V Monroe County II Player of the Year and Birds Eye Player of the Year... Helped lead Greece Arcadia to a 14-3-1 record and the tough Monroe Country Division II league title... Tabbed first team all-county for her junior and senior seasons... Earned All-Greater Rochester honors in 2004... As a freshman and sophomore, named Honorable Mention All Greater Rochester... Lead team in scoring in 2002... Monroe County Section V Soccer Player of Week as a sophomore (2002) and senior (2004)... A member of the Greece Cobras club team leading team to NYSWYSA titles in 1997, 1998, 2001, 2002 and 2003... Also a starter for the Greece Arcadia basketball team, helping lead the squad to the state title... Earned honorable mention All-Greater Rochester accolades on hardwood... Daughter of Danny and Peggy O'Connell... Born on April 6, 1987.

best 15 goals. **Background:** A three-year starter and 2004 team captain at David Prouty High School... A Central Massachusetts All-Star in 2002... Competed four seasons for the U-17 Boston Renegades, who captured the 2004 Super Y League national championship... Marked the second season in which she was named the team's Most Valuable Player (2003, 2004)... Member of the Super-Y- Regional ODP pool... Played on Mass ODP team from 1999-2003 and on Fuller Hamlets from 2000-2002... Enrolled in LIU Honors program... Majoring in nursing... Born on May 24, 1987... Daughter of Joan and Bill Allen.



Nicole Allen • Career Statistics									
	GP	GS	SH	G	A	P	GWG	YC	RC
2005	20	1	2	0	0	0	0	0	0
2006	20	13	0	0	3	3	0	1	0
Totals	40	14	2	0	3	3	0	1	0

Kelly O'Connell • Career Statistics									
	GP	GS	SH	G	A	P	GWG	YC	RC
2005	20	20	3	0	0	0	0	0	0
2006	19	10	1	0	0	0	0	1	0
Totals	29	30	4	0	0	0	0	1	0



Christina O'Connor

Midfield • 5-6 • Junior
Venetia, Pa.
Peter's Township

2



Kim Bishop

Midfield/Forward • 5-3 • Sophomore
Valley Stream, N.Y.
Kellenberg Memorial

13

Notes: Very physical... Strong player in the air... Made a smooth transition to the college game... Sister of former LIU defender Ashley O'Connor. **2006:** Appeared in all 22 games, making 12 starts... Had an assist in consecutive games vs. Binghamton (9/17) and Oregon



State (9/22)... Scored in 2-0 win over Sacred Heart in the Northeast Conference semifinals... Also had an assist in win over Delaware State (9/6).

2005: Appeared in 19 games, registering 13 starts... Finished with seven points on two goals and three assists... Scored her first two collegiate goals in a pair of weekend wins against Robert Morris and Saint Francis (Pa.) to earn NEC Rookie of the Week honors... Goal versus RMU was the game-winner...

Registered first assist in 3-0 win over Temple (9/23)... Assisted on game-winning goal against Monmouth... Assisted on game-winning goal versus FDU (10/28)... Recorded 11 shots on the season.

Background: A four-year varsity starter and letterwinner... Tabbed a Region I All-American and Player of the Year by the *Pittsburgh Post-Gazette* in 2004... Selected All-WPIAL and all-section twice... As captain of her 2004 team, helped the squad advance to the state quarterfinals... Selected all-state and named to the Elite squad for two straight seasons... *Observer Reporter* Player of the Year... Named to *Post-Gazette* Elite squad and *Observer Reporter* Elite team junior season... Also, a *Tribune Review* Elite and Almanac Elite selection... Helped lead high school team to section championship and state semifinals... Recognized by *Who's Who in Sports*... Member of Century 5 Fire/Century United club squad... US Club Soccer 2003 runner-up and guest player on Century United Flash 2002 Jefferson Cup finalist... Kentucky and Kirkwood showcase participant... Member of ODP squad for two years... Also ran track and field and participated in ski club... Born on Oct. 31, 1986... Daughter of Mari Jean and Kendall O'Connor... Majoring in marketing.

2006: Appeared in all 22 games as a rookie... Made 10 starts... Scored a hat-trick in 6-0 win over Wagner (9/28), accounting for her first collegiate goals. **Background:** Played four years varsity at Kellenberg Memorial High School in Uniondale, N.Y... Led team in scoring with 35 goals and adding 20 assists over four years... Paced the team in goals in 2004 and assists in 2005... Named Catholic High School Athletic Association All-League... A Merit Award recipient and Character Award winner for four years... Played for Stony Brook Impact Premier U-16 and U-17, a Northeast Regional Premier team... Coached by Pat Vignona, father of current LIU men's soccer player Ryan Vignona... Played for Valley Stream from U-11 through U-15... In addition to soccer, played lacrosse and basketball at Kellenberg... Most Valuable Player in lacrosse and garnered Hustle Award in junior varsity basketball in 2003... Named to the honor roll for four straight years... A member of the National Honor Society... Daughter of James and Barbara Bishop... Born on June 18, 1988... Majoring in occupational therapy... Enrolled in LIU Honors Program.



Christina O'Connor • Career Statistics									
	GP	GS	SH	G	A	P	GWG	YC	RC
2005	19	13	11	2	3	7	1	0	0
2006	22	12	9	1	3	5	0	2	0
Totals	41	25	20	3	6	12	1	2	0

Kim Bishop • Career Statistics									
	GP	GS	SH	G	A	P	GWG	YC	RC
2006	22	10	15	3	0	6	0	1	0
Totals	22	10	15	3	0	6	0	1	0



Player Profiles



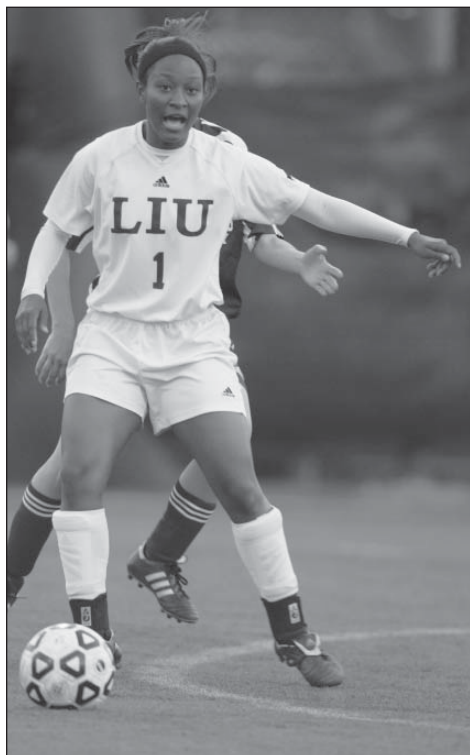
Tasia Davis
Forward • 5-6 • Sophomore
San Francisco, Calif.
Sacred Heart Cathedral

1



Aly Hanson
Forward • 5-5 • Sophomore
New Milford, N.J.
New Milford

20



2006: Appeared in all 22 games, making three starts... Posted her first career goal in 1-0 win over Binghamton (9/17)... Scored the second goal in a 2-0 win over Monmouth in the Northeast Conference Championship game (11/5). **Background:** Attended Sacred Heart Cathedral Preparatory, becoming the first women's soccer player from her high school to play Division I... Team captain during her senior season and awarded team Most Valuable Player honors... Moved to defense for senior campaign and helped

2006: Named to All-Northeast Conference First Team... Appeared in all 22 games, making 11 starts... Led the Blackbirds in points (19), goals (nine) and game-winning goals (four)... Scored her first collegiate goal in opening contest at Saint Mary's (8/25)... Scored twice in win over Delaware State (9/6)... Scored game-winner against Sacred Heart in NEC semifinals (11/3)... Also scored game-winners against Rider (8/31), Robert Morris (10/21) and Monmouth (10/27). **Background:** Scored 110 career goals at New Milford High School... A four-time All-Bergen County performer who led all of Northern New Jersey in goals scored (35) in 2005 for the second straight season... As a senior, was selected Third Team All-State... All-North Jersey Group 1 First Team honoree in 2004 and 2005... A member of the BCSL Olympic Division First Team for three straight years... Played for a number of club teams, including the Manhattan Hawks (2004, 2005)... Also saw action for the W-League's NY Magic, pitting her against some of the best players in the country... Played for Bergenfield United in 2002 and 2003... Also saw action with Manhattan Devils in 2004 and Manhattan Cheetahs in the fall of 2005... Posted top 10 showings in the 400-meters at the New Jersey State Track and Field Meet for the past two seasons... A First Team BCSL Olympic Division selection in the 100-, 400-meter dashes and the triple and long jumps... Also runs track for the Blackbirds, the defending NEC champions... Daughter of Cathy and Michael Moran... Majoring in sports sciences... Born on June 2, 1988.

her team post shutout ties against top-ranked rivals, Archbishop Mitty and St. Ignatius... Tabbed to All-West Catholic Athletic League First Team... As a junior, tallied 20 goals and earned All-WCAL Second Team honors... Second leading scorer in the league... Named top newcomer for the league... Captain of the track team and named Most Promising and Most Outstanding Sprinter... Ranked in the top three in the 100-meters in WCAL and top five in the league in 200-meters... A member of student council... Honors student... Played travel soccer for the MVLA Titans... Cousin is William 'Flipper' Anderson who played in the NFL from 1988-1994... Brother Jamir played collegiate football at the University of Kentucky... Daughter of Jerome and Alice Davis... Born March 23, 1988... Majoring in business management.



Tasia Davis • Career Statistics									
	GP	GS	SH	G	A	P	GWG	YC	RC
2006	22	3	4	2	0	4	1	2	0
Totals	22	3	4	2	0	4	1	2	0

Aly Hanson • Career Statistics									
	GP	GS	SH	G	A	P	GWG	YC	RC
2006	22	11	32	9	1	19	4	0	0
Totals	22	11	32	9	1	19	4	0	0



Neddie King

Midfield • 5-8 • Sophomore
Williamsville, N.Y.

Buffalo Academy of the Sacred Heart

11

2006: Appeared in 11 games... Recorded an assist and attempted two shots on the season... Posted first career point with an assist in 8-0 win over Delaware State (9/6)... Appeared in the NCAA Tournament against Texas (11/5). **Background:** Most Valuable Player at Buffalo Sacred Heart Academy in 2003 and 2004... Named to Monsignor Martin First Team two consecutive seasons (2003, 2004)... A member of the Buffalo United U-17 squad for five years, playing both the forward and



midfield spots... Played for Lancaster Soccer Club, earning Most Valuable Player honors in 2003 and 2004... Born on Dec. 18, 1988... Daughter of Mark and Ruth King... Given first name is Jeannethe... Enrolled in the LIU Honors Program... Pursuing a bachelor's degree in athletic training.

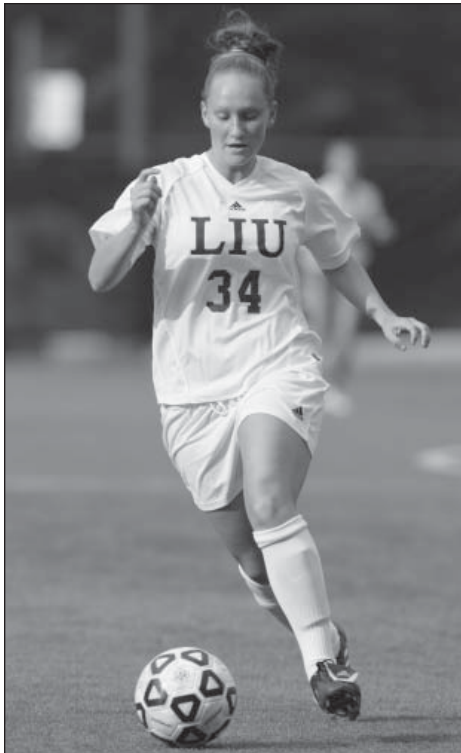


Jenae' Piper

Forward/Midfield • 5-5 • Sophomore
Pine Beach, N.J.

Toms River South

34



2006: Appeared in 10 games as a substitute... Took one shot in win over Delaware State (9/6)... Was part of four shutouts by the Blackbirds.

Background: Four-year varsity letterwinner at Toms River South... Scored 24 goals and added 20 assists for her career... First Team All-Conference in 2003 and 2004... Also tabbed First Team All-County coaches following junior and senior seasons... Named a Second Team All-County by the *Times-Observer*... In 2005, selected Third Team All-Shore by the

Asbury Park Press... Served as co-captain of squad... Collected Most Valuable Player honors in 2004 and 2005... Team won the 2002 NJSIAA Group III State Championships... Squad also captured Shore Conference Tournament Championship, Class A South Conference title and were ranked No. 1 in New Jersey and 15th in the nation in 2002... Named team's Rookie of the Year and received Gatorade Award in 2002... Began playing for the Voorhees Soccer Club Berlin Bulldogs in July of 2005... Played for Match Fit Academy FC Storm from 2002-2005... Helped lead team to final round of the 2004 PDA Girls Invitational Showcase Tournament and the 2004 Match Fit Academy Invite... Was a 2002 and 2004 ODP State Pool Player... Also played basketball and lacrosse at Toms River South... Majoring in physical education... Daughter of Edward and Karen Piper-Graichen... Born on Aug. 31, 1988.



Neddie King • Career Statistics

	GP	GS	SH	G	A	P	GWG	YC	RC
2006	11	0	2	0	1	1	0	0	0
Totals	11	0	2	0	1	1	0	0	0

Jenae' Piper • Career Statistics

	GP	GS	SH	G	A	P	GWG	YC	RC
2006	10	0	1	0	0	0	0	0	0
Totals	10	0	1	0	0	0	0	0	0



Felicia Reynolds

Defense • 5-4 • Sophomore
Mount Laurel, N.J.
Lenape

7



Angela Schumacher

Goalkeeper • 5-6 • Sophomore
Bayside, N.Y.
St. Mary's

00



2006: Played in five games as a freshman... Saw her first collegiate action in 8-0 win over Delaware State (9/6). **Background:** Played three varsity seasons at Lenape High School... Also played midfield and goalie... Two-time school-record holder in the 800-meter relay as a three-year member of the track team... Played with fellow Blackbird Jenae' Piper on the Voorhees SA Berlin Bulldogs club team... Team reached the 2004 and 2005 NJ State Cup semifinals...

2006: Appeared in one game, playing 13 minutes against Delaware State (9/6). **Background:** Attended Saint Mary's High School in Manhasset, playing three years of varsity soccer... Earned the Coaches Trophy and Most Valuable Player accolades following her senior season... Competed for the Albertson Fury 87 Madrid club team from the Mid-Atlantic Area I Soccer League... From 2002-2005, starred for FC



Westchester helping the squad reach the 2005 Northeast Region I finals... Participated in the Empire State games in the New York City region in 2005... A member of the National Honor Society and four year honor roll recipient at Saint Mary's... Enrolled LIU Honors Program... Majoring in pharmacy... Born on June 10, 1988... Daughter of Tina and Robert Schumacher.

Team was a MAPS Group A pick in 2004 and 2005... Also played for Mount Laurel United Excels helping them win the 2000 Sunburst Tournament and 2000 WAGS Tournament title... Was a South Jersey Select Soccer team selection for two years and a member of the South Jersey ODP pool in 2001... Majoring in psychology... Born on Sept. 15, 1988... Daughter of Doug and Maryann Reynolds.

Felicia Reynolds • Career Statistics									
	GP	GS	SH	G	A	P	GWG	YC	RC
2006	5	0	0	0	0	0	0	0	0
Totals	5	0	0	0	0	0	0	0	0

Angela Schumacher • Career Statistics									
	GP	GS	MIN	S	SHO	GA	GAA	SV%	W-L-T
2006	1	0	13:07	0	0	0	0	.000	0-0-0
Totals	1	0	13:07	0	0	0	0	.000	0-0-0



Kelly Carter

Defense • 5-4 • Freshman
Exton, Pa.
Downington East

9



Christine DeLashmutt

Goalkeeper • 5-6 • Freshman
Littleton, Colo.
Columbine

0

Background: Player four seasons of varsity soccer at Downington East High School... Helped team to a 19-3-2 record as a senior... Named First Team All-Chestmont and All-Area as a senior... Also earned All-Chestmont recognition as a freshman and sophomore... Played club soccer for the Spirit United Gaels, helping the team to a regional championship and the national finals in 2006... Also ran indoor and outdoor track... A member of the National Honor Society... Plans on majoring in biology... Daughter of Maureen and Robert Carter... Born Sept. 13, 1988.

Background: The first four-year starter at Columbine High School... An all-league performer as a senior... Named one of the top players in the state by the *Denver Post*... Honored by the *Rocky Mountain News* as one of the top three soccer players in the league... Led school to state quarterfinals as a freshman and junior... Helped Columbine to a league championship as a junior... Played club soccer for Colorado Rush, Littleton United and Real Colorado... Helped Real Colorado to State Cup Championship and Disney Shootout title... Helped the Rush to two State Cups and a Region IV Championship... Plans on majoring in athletic training... Daughter of Robin Peterson and James DeLashmutt... Born on Oct. 12, 1988.



Eleri Earnshaw

Defense • 5-5 • Graduate
Rhyl, Wales
Iona

5

Notes: Has one year of eligibility at LIU after starting career at Iona.
At Iona: Two-time All-MAAC First Team selection... Also earned All-MAAC Second Team honors... Started every game of her career and finished with four goals and four assists. **Background:** Member of the Welsh National Team... Attended Arsenal FC Academy from 2001-04... Daughter of Janet and David Earnshaw... Older brother, John, played in the Welsh National League... Will be pursuing a Masters of Science in health sciences... Born on May 17, 1985.



Amanda Johnson

Goalkeeper • 5-7 • Junior
Maryland Heights, Mo.
St. Louis Community College

33

Background: Attended St. Louis Community College and William Jewell College... In 2006 led conference with a 0.20 GAA and helped team to the national tournament... Helped William Jewell College to the NAIA national tournament in 2005 and 2006... In 2005, posted a 1.00 GAA... Named Second Team All-Conference in 2004... Was also selected to the all-tournament team and was picked for the North/South Metro All-Star Game... Also an all-conference tennis player... A member of Phi Theta Kappa honors society... Majoring in sports sciences... Daughter of Janet and Mark Johnson... Born on March 10, 1986.



Samantha Hoak

Midfield • 5-4 • Freshman
South Park, Pa.
South Park

14

Background: Attended South Park High School... Led South Park to four section championships... Named to the *Pittsburgh Post* Elite 11... Also earned all-state, All-NPIAL and all-section recognition as a senior... Led South Park to the 2006 WPIAL Championship... Played club soccer for Beadling Soccer Club starting at the U-12 level... Helped team to State Cup Championships in 2004 and 2006... Played four years with the Olympic Development Program... Named Who's Who Among American High School Student-Athletes... Daughter of Lynn and Ken Hoak... Majoring in marketing... Sister, Janelle, played soccer at Penn State... Born on Feb. 17, 1989.



Christine Jones

Defense/Midfield • 5-6 • Freshman
Hartford, Conn.
Weaver

16

Background: Played at Weaver High School... Posted 32 goals and 17 assists in high school career... Posted 13 goals as a senior and 11 as a junior... Named team Most Valuable Player and earned all-conference recognition in 2005 and 2006... An accomplished track athlete, earned All-America, all-state and all-conference accolades... Named MVP of the field events... Majoring in athletic training... Daughter of Annmarie Anderson... Born on Nov. 20, 1988.





Lara Martinez
Forward • 5-9 • Freshman
West Chester, Ohio
Lakota East

25

Background: Starter at Lakota East High School... Helped team to second round of the Sectional Championships as a senior... Team won 2005 Greater Miami Conference League Championship... Helped Lakota East to a district championship and regional finals in 2004... A member of the 2006 Ohio South State ODP Team... Three-time member of Ohio South State ODP Pool... Also played basketball as a freshman and track for two years... Competed in the 400-meter dash and the 4x400-meter relay... Helped club team, Ohio Elite, to 2005 State Cup Finals... Daughter of Susan and Javier Martinez... Majoring in chemistry... Born on Sept. 25, 1989.



Kayleigh Morgan
Defense • 5-10 • Freshman
Harlow, England
St. Mark's

6

Background: Advanced through the Colchester United Ladies Football Club Academy... Also has experience with the West Ham United Ladies... Scored five goals with the Colchester United Ladies First Team during the 2006-07 season... Named Most Improved Player of the First Team... Named Manager's Player of the Year for the Under-14 and Under-16 teams... Also helps as an assistant coach... Pursuing a major in sports sciences... Daughter of Nicola and Colin Morgan... Born on Feb. 5, 1989.



Caitlin Meadows
Midfield • 5-8 • Freshman
Brookdale, Calif.
San Lorenzo Valley

17

Background: Played four seasons at San Lorenzo Valley High School... Finished career with 34 goals and 64 assists... As a senior, posted seven goals and eight assists, helping team to a 7-3-2 record... Named County Player of the Year and co-Midfielder of the Year... Team Most Valuable Player as a junior and senior... Four-time member of All-CIF team... Earned CCS First Team honors on three occasions... Played club soccer for De Anza Force, helping the team to the Cal Cup Championship, as well as semifinals at Nomads and the quarterfinals of the State Cup... Also played for SCC Breakers and advanced to USL Nationals and Adidas Final IV... Also participated in golf, cross country and track... Pursuing a major in sociology... Daughter of Jennifer and Gary Meadows... Born on May 20, 1989.



Samantha Post
Forward/Midfield • 5-3 • Freshman
Littleton, Colo.
Heritage

21

Background: Three-year varsity member at Heritage High School... Two-time Continental League Honorable Mention honoree... Played with fellow Blackbird Christine DeLashmutt, on club teams Real Colorado and Littleton United... Helped lead Real Colorado to State Cup Championship and Disney Shootout Championship... Also played with the Colorado Girls Soccer Academy... Pursuing a major in education... Daughter of Sharon and Chris Post... Born on May 9, 1989.



Brittney Rigtrup
Goalkeeper • 5-8 • Freshman
Renton, Wash.
Hazen

4

Background: Played for Hazen High School for four seasons... Three-time member of Washington State ODP Team... Member of the Region IV ODP camp on three occasions... Helped state ODP team to a Region IV Championship in 2004 and a second place finish at the 2005 ODP National Championships... Earned First Team All-Seamont League as a junior and senior at midfielder... Earned All-League Honorable Mention as a freshman and sophomore... Played club soccer for the Washington Premier FC... Majoring in chemistry... Daughter of Stephanie and Marc... Born on April 4, 1989.



Brittany Schandelmayer
Midfield • 5-6 • Freshman
Stow, Mass.
Nashoba Regional

10

Background: Played for Nashoba Regional High School, helping team to a national ranking as a senior... Played for the Region I ODP Team... Three-time league all-star... Named 2004 Central Massachusetts and League Most Valuable Player... Three-time Central Massachusetts All-Star... Three-time all-state selection... Played club soccer with the Inter Bandits SC Boston... Majoring in athletic training... Daughter of Cliff Schandelmayer... Born on May 14, 1989.



Amy Rizzo
Midfield • 5-0 • Graduate
Jackson, N.J.
Jackson Memorial

3

Notes: Has one year of eligibility after competing with the LIU lacrosse team. **At LIU:** School's all-time scoring leader in lacrosse with 249 points... Tallied 185 goals and 64 assists... Four-time All-NEC selection, including first team twice. **Background:** Attended Jackson Memorial High School... Competed in lacrosse, soccer and basketball... Honorable Mention All-Shore and First Team All-County... Also earned All-Conference Honor Roll as a junior and senior for lacrosse... Pursuing a Master's in business administration... Born Nov. 10, 1984... Daughter of Rom and Patty Rizzo.



Kesiah Wattley
Midfield • 5-5 • Freshman
Panama City, Panama
Balboa Academy

15

Background: Played at Balboa Academy in Panama City, Panama... She played for San Martin in the ANAFUFE League, helping her team to the championship game... Named league Most Valuable Player in her second season... Represented Panama in qualifying for the U-20 and U-19 FIFA World Cup... Earned three caps for the Panamanian National Team in qualifiers for the FIFA CONCACAF Gold Cup and the 2007 FIFA World Cup... Also participated in the Annual Ocean to Ocean Cayuco Race, helping her canoe team to a second-place finish in 2005 and 2006 against teams from around the world... Majoring in biology... Daughter of Roma and David Wattley... Born in Sacramento, Calif., on Feb. 25, 1989.





2006 Results

Overall: 13-6-1 Northeast Conference: 7-1-1 Home: 9-1-1 Away: 4-5-0 Neutral: 0-2-0

Date	Opponent	Result	Shots		Saves		LIU Goals
			LIU-Opp	LIU-Opp	LIU-Opp	LIU-Opp	
8/25	at Saint Mary's (Calif.)	L, 1-3	4-9	3-1		Hanson	
8/27	at Pacific	L, 0-3	5-25	11-4		--	
8/31	RIDER	W, 2-0	15-10	5-5		Hanson; Troutman	
9/3	at Columbia	L, 0-2	7-17	6-3		--	
9/6	DELAWARE STATE	W, 8-0	21-5	2-8		Berisha (3); Dunbar; Andreano Hanson (2); Troutman	
9/10	vs Stanford \$	L, 0-4	1-16	10-1		--	
9/13	at Drexel	L, 1-2 (2ot)	19-11	5-6		Hanson	
9/17	BINGHAMTON	W, 1-0	12-8	4-5		Davis	
9/22	OREGON STATE	T, 1-1 (2ot)	11-11	8-6		Troutman	
9/24	at Iona	L, 0-2	11-7	0-3		--	
9/28	WAGNER *	W, 6-0	18-3	2-4		Gans; Bishop (3); Andreano; Hanson	
10/06	at Fairleigh Dickinson *	W, 3-1	11-8	4-6		Troutman (2); Team	
10/08	at Sacred Heart *	W, 1-0	6-10	6-0		Berisha	
10/13	QUINNIPIAC *	W, 2-1	8-7	3-3		Jackson (2)	
10/15	CENTRAL CONNECTICUT STATE *	L, 0-1	15-10	3-5		--	
10/20	at Robert Morris *	W, 1-0 (ot)	12-8	4-6		Hanson	
10/22	at Saint Francis (Pa.) *	W, 2-0	8-6	2-1		Jackson; Andreano	
10/27	MONMOUTH *	W, 1-0	9-6	3-1		Hanson	
10/29	MOUNT ST. MARY'S *	W, 3-0	15-6	6-4		Jackson; A. O'Connor; Andreano	
11/3	SACRED HEART #	W, 2-0	7-9	5-5		Hanson; C. O'Connor	
11/5	MONMOUTH #	W, 2-0	8-6	1-3		Gans; Davis	
11/10	vs. Texas !	L, 0-4	5-19	4-2		--	

\$ - at Piscataway, N.J.

- Northeast Conference Tournament

* - Northeast Conference game

! - NCAA Tournament

Individual Statistics

Player	GP-GS	G	A	Pts	Sh	Shot%	YC-RC	GWG	PK-ATT
Aly Hanson	22-11	9	1	19	32	.281	0-0	4	0-0
Christine Gans	22-22	2	11	15	18	.111	1-0	2	0-0
Allison Andreano	22-22	4	4	12	34	.118	0-0	0	1-2
Caley Troutman	22-21	5	1	11	20	.250	0-0	0	0-0
Lizelle Jackson	20-14	4	0	8	31	.129	1-0	3	0-0
Selima Berisha	16-15	4	0	8	19	.211	2-1	2	0-0
Kim Bishop	22-10	3	0	6	15	.200	1-0	0	0-0
Christina O'Connor	22-12	1	3	5	9	.111	2-0	0	0-0
Ashley O'Connor	22-22	1	3	5	5	.200	0-0	0	1-1
Tasia Davis	22-3	2	0	4	25	.080	2-0	1	0-0
Tiffany Dunbar	21-1	1	1	3	8	.125	0-0	0	0-0
Nicole Allen	20-13	0	3	3	0	.000	1-0	0	0-0
Amy Paige	22-22	0	2	2	1	.000	0-0	0	0-0
Erica Chong	19-1	0	1	1	4	.000	1-0	0	0-0
Catie Blake	22-21	0	1	1	3	.000	2-0	0	0-0
Neddie King	11-0	0	1	1	2	.000	0-0	0	0-0
Jenae' Piper	10-0	0	0	0	1	.000	0-0	0	0-0
Kelly O'Connell	19-10	0	0	0	1	.000	1-0	0	0-0
Felicia Reynolds	5-0	0	0	0	0	.000	0-0	0	0-0
LONG ISLAND	22	37	32	106	228	.162	14-1	13	2-3
Opponents	22	24	21	69	217	.111	11-0	8	1-1

Goalkeeper	GP-GS	Min.	GA	GAA	Saves	Save %	W-L-T	Sho.
Angela Schumacher	1-0	13:07	0	0.00	0	.000	0-0-0	0
Felicia Amaral	5-1	217:04	2	0.83	7	.778	0-1-0	0
Stephanie Kansky	21-21	1789:23	22	1.11	84	.792	13-7-1	7
LONG ISLAND	22	2019:34	24	1.07	95	.798	13-8-1	11
Opponents	22	2019:34	37	1.65	84	.694	8-13-1	6



1997

Record: 1-16-1 • Head Coach: Glenn Crooks
Northeast Conference: 1-4-1 (6th)

8/30	at Seton Hall #	L, 0-3
8/31	vs. Iona #	L, 0-1 (ot)
9/3	Manhattan	L, 0-2
9/6	Rider	L, 0-3
9/12	Northeastern	L, 1-3
9/14	at Drexel	L, 0-1
9/17	Hofstra	L, 0-7
9/20	at Mount St. Mary's *	L, 0-2
9/24	Monmouth *	L, 0-3
9/27	at Siena	L, 2-4
10/4	at Central Conn. St. *	L, 0-3
10/10	Robert Morris *	T, 1-1 (2ot)
10/15	at Quinnipiac	L, 1-3
10/18	Saint Peter's	L, 0-3
10/22	at Wagner *	L, 0-6
10/26	Saint Francis (Pa.) *	W, 3-2
10/29	at Lafayette	L, 0-3
11/1	at UMBC	L, 0-6

Seton Hall Invitational (South Orange, N.J.)

1998

Record: 7-9-1 • Head Coach: Glenn Crooks
Northeast Conference: 2-6 (t-6th)

9/2	Lafayette	W, 1-0
9/5	at La Salle	L, 0-2
9/9	Siena	W, 3-0
9/12	Drexel	L, 0-1
9/16	at Saint Peter's \$	W, 2-0
9/19	Quinnipiac *	L, 3-6
9/25	at Saint Francis (Pa.) *	L, 3-4
9/27	at Robert Morris *	L, 1-2
10/2	at Stetson	W, 1-0
10/4	vs. Tampa #	T, 2-2 (2ot)
10/7	Wagner *	W, 2-1
10/10	at Rider	W, 3-0
10/13	at Hofstra	L, 1-4
10/20	Central Conn. St. *	L, 0-3
10/23	UMBC *	L, 1-2
10/25	Mount St. Mary's *	W, 3-1
10/28	Monmouth *	L, 1-2

\$ at Denville, N.J.
 # at DeLand, Fla.

1999

Record: 11-9-2 • Head Coach: Glenn Crooks
Northeast Conference: 5-4 (t-4th)

8/31	at Miami	L, 0-2
9/2	at Lafayette	T, 1-1 (2ot)
9/4	Hofstra	L, 1-6
9/8	Manhattan	W, 3-1
9/11	Drexel	W, 3-2 (ot)
9/14	at Siena	T, 0-0 (2ot)
9/18	Fordham	W, 3-0
9/21	La Salle	L, 0-3
9/24	at Quinnipiac *	L, 1-2
9/26	at Central Conn. St. *	L, 2-3 (2ot)
10/1	Robert Morris *	W, 2-1
10/3	Saint Francis (Pa.) *	L, 0-1
10/6	at Wagner *	W, 1-0
10/12	at St. John's	L, 1-6
10/15	at Mount St. Mary's *	L, 1-0
10/17	at UMBC *	W, 1-0
10/23	Sacred Heart *	W, 3-2 (2ot)
10/26	Monmouth *	W, 2-1
10/29	vs. Central Conn. St. [NEC]	W, 1-0
10/31	vs. Quinnipiac [NEC]	W, 1-0
11/6	vs. SW Texas St. #	W, 1-0
11/10	at Maryland [NCAA]	L, 0-6

NCAA Play-In (Teaneck, N.J.)

2000

Record: 7-11-1 • Head Coach: Tracey Bartholomew
Northeast Conference: 6-3-1 (4th)

8/27	at La Salle	L, 1-6
8/30	at Saint Joseph's	L, 1-2
9/2	at Hofstra	L, 2-4
9/6	St. John's	L, 2-4
9/8	vs. Fairfield #	W, 4-3

9/10	at Massachusetts #	L, 0-6
9/15	at Robert Morris *	W, 3-2
9/17	at Saint Francis (Pa.) *	L, 0-3
9/22	Quinnipiac *	W, 3-2
9/24	Central Conn. St. *	W, 3-2 (ot)
9/29	at Arizona \$	L, 1-2 (ot)
10/1	vs. Northern Arizona \$	L, 2-3 (ot)
10/5	Wagner *	W, 3-0
10/10	at Fairleigh Dickinson *	W, 3-1
10/13	Mount St. Mary's *	W, 2-0
10/15	UMBC *	T, 0-0 (2ot)
10/18	at Monmouth *	L, 0-1
10/22	at Sacred Heart *	L, 0-1
10/27	vs. Quinnipiac [NEC]	L, 0-1

UMass Classic (Amherst, Mass.)
 \$ Starwoods Plaza Soccer Classic (Tucson, Ariz.)

2001

Record: 4-12-0 • Head Coach: Tracey Bartholomew
Northeast Conference: 3-7-0 (t-7th)

8/31	at Saint Joseph's	L, 0-1
9/2	at St. John's	L, 0-5
9/5	at Columbia	L, 1-3
9/9	at Colgate	L, 1-2 (ot)
9/21	Robert Morris *	W, 2-1
9/23	Saint Francis (Pa.) *	W, 1-0
9/28	at Central Conn. St. *	L, 0-1
9/30	at Temple	L, 0-3
10/5	at Mount St. Mary's *	L, 1-2
10/7	at UMBC *	L, 1-3
10/12	Fairleigh Dickinson *	L, 1-2
10/14	Sacred Heart *	W, 3-1
10/19	at Manhattan	W, 2-1
10/21	Monmouth *	L, 1-2 (2ot)
10/23	at Wagner *	L, 0-1
10/28	at Quinnipiac *	L, 0-2

2002

Record: 6-13-0 • Head Coach: Tracey Bartholomew
Northeast Conference: 3-7-0 (9th)

8/31	at Marist	L, 1-2
9/7	Drexel	L, 0-2
9/10	Manhattan	W, 3-1
9/14	at Albany \$	W, 2-1 (ot)
9/15	vs. Bucknell \$	L, 0-1
9/19	at Hawaii #	L, 1-6
9/21	vs. Long Beach St. #	L, 0-5
9/27	Northeastern	L, 0-3
9/29	Wagner *	W, 2-1
10/4	Quinnipiac *	L, 1-2
10/6	Central Conn. St. *	L, 2-4
10/11	at Robert Morris *	W, 2-1
10/13	at Saint Francis (Pa.) *	L, 0-1
10/18	Mount St. Mary's *	W, 1-0
10/20	UMBC *	L, 0-2
10/25	at Monmouth *	L, 0-2
10/27	at Fairleigh Dickinson *	L, 0-1
11/1	at Sacred Heart *	L, 1-3
11/4	Saint Peter's	W, 7-0

\$ Governor's Cup (Albany, N.Y.)
 # Ohana Shootout (Honolulu, Hawaii)

2003

Record: 9-9-1 • Head Coach: Tracey Bartholomew
Northeast Conference: 6-3-0 (3rd)

8/30	at Drexel	L, 3-4
9/5	at Northeastern	W, 1-0
9/7	at Providence	L, 0-2
9/12	at UC Riverside	L, 0-4
9/14	at Cal State Northridge	L, 0-3
9/17	Saint Joseph's	T, 1-1
9/20	Marist	W, 2-0
9/28	at Mount St. Mary's *	W, 1-0 (ot)
10/3	Robert Morris *	W, 2-0
10/5	Saint Francis (PA) *	W, 2-0
10/19	Sacred Heart *	L, 0-2
10/25	Albany	W, 1-0
10/28	at Rider	L, 1-2 (ot)
10/31	Monmouth *	W, 1-0
11/2	Fairleigh Dickinson	W, 2-1
11/7	vs. Sacred Heart [NEC]	L, 0-1

2004

Record: 9-7-2 • Head Coach: Tracey Bartholomew
Northeast Conference: 4-3-2 (t-5th)

8/28	vs. Utah Valley St. \$	W, 1-0
8/30	at UNLV	L, 2-3
9/3	Rider	W, 3-2 (ot)
9/10	at St. John's #	L, 0-2
9/12	vs. Columbia #	L, 0-1
9/17	at Stony Brook	W, 1-0
9/24	Monmouth *	W, 1-0
9/26	Mount St. Mary's *	W, 1-0
10/1	at Sacred Heart *	T, 1-1 (2ot)
10/3	at Fairleigh Dickinson *	L, 1-2
10/9	at Saint Peter's	W, 4-1
10/15	Wagner *	W, 2-0
10/22	at Robert Morris *	L, 0-1
10/24	at Saint Francis (PA) *	L, 1-2
10/29	Quinnipiac *	T, 1-1 (2ot)
10/31	Central Conn. St. *	W, 2-1
11/12	vs. Fordham +	W, 2-1
11/13	at Columbia +	L, 1-2 (ot)

\$ at Las Vegas, Nev.
 # NYC Mayor's Cup (Jamaica, N.Y.)
 + ECAC Tournament (New York, N.Y.)

2005

Record: 13-6-1 • Head Coach: Tracey Bartholomew
Northeast Conference: 7-1-1 (2nd)

8/26	at Rider	W, 1-0 (2ot)
8/28	at Binghamton	L, 0-1 (ot)
9/3	Drexel	W, 1-0
9/6	Stony Brook	W, 1-0
9/11	at Northeastern	L, 1-2
9/16	at #23 Oregon State#	L, 1-3
9/18	vs. Washington State#	L, 0-1
9/23	Temple	W, 3-0
9/25	Iona	W, 2-1
9/30	at Central Conn. St.	L, 0-1
10/2	at Quinnipiac	W, 3-0
10/7	Robert Morris	W, 2-1
10/9	Saint Francis (Pa.)	W, 2-1
10/16	at Mount St. Mary's	T, 1-1 (2ot)
10/18	at Wagner	W, 3-2
10/28	Fairleigh Dickinson	W, 1-0
10/30	Sacred Heart	W, 1-0
11/4	vs. Saint Francis (Pa.) [NEC]	W, 1-0
11/6	at Central Conn. State [NEC]	L, 0-1

OSU Nike Classic (Corvallis, Ore.)

2006

Record: 13-8-1 • Head Coach: Tracey Bartholomew
Northeast Conference: 8-1-0 (1st)

8/25	at Saint Mary's (Calif.)	L, 1-3
8/27	at Pacific	L, 0-3
8/31	Rider	W, 2-0
9/3	at Columbia	L, 0-2
9/6	Delaware State	W, 8-0
9/10	vs. Stanford \$	L, 0-4
9/13	at Drexel	L, 1-2 (2ot)
9/17	Binghamton	W, 1-0
9/22	Oregon State	T, 1-1 (2ot)
9/24	at Iona	L, 0-2
9/28	Wagner *	W, 6-0
10/6	at Fairleigh Dickinson *	W, 3-1
10/8	at Sacred Heart *	W, 1-0
10/13	Quinnipiac *	W, 2-1
10/15	Central Conn. St. *	L, 0-1
10/20	at Robert Morris *	W, 1-0 (ot)
10/22	at Saint Francis (Pa.) *	W, 2-0
10/27	Monmouth *	W, 1-0
10/29	Mount St. Mary's *	W, 3-0
11/3	Sacred Heart [NEC]	W, 2-0
11/5	Monmouth [NEC]	W, 2-0
11/10	vs. Texas [NCAA]	L, 0-4

\$ at Piscataway, N.J.



Career Leaders

Points

1. Larissa Swartzlander (1997-00)	63
2. Jackie McCormick (2002-05)	55
3. Selima Berisha (2003-2006).....	47
Nichole Lopez (2001-04).....	39
5. Allison Andreano (2003-06)	38
6. Laura Brosious (1999-02)	36
7. Katie Durkin (1997-00).....	33
Rosette Rough (1999-02).....	33



Larissa Swartzlander

Goals

1. Larissa Swartzlander (1997-00)	29
2. Jackie McCormick (2002-05)	20
Selima Berisha (2003-2006).....	20
4. Rosette Rough (1999-02).....	14
5. Julie Hereth (1998-99)	13
Laura Brosious (1999-02)	13

Assists

1. Allison Andreano (2003-06)	18
2. Katie Durkin (1997-00).....	15
Jackie McCormick (2002-05)	15
Nichole Lopez (2001-04).....	15
5. Meghann McCormick (2002-05).....	13
6. Erica Anderson (1999-02).....	11
7. Laura Brosious (1999-02)	10
8. Lauren Grant (1998-01)	9

Shots

1. Larissa Swartzlander (1997-00)	179
Jackie McCormick (2002-05)	179
3. Laura Brosious (1999-2002)	148
4. Allison Andreano (2003-06)	131
Selima Berisha (2003-06).....	131
6. Nichole Lopez (2001-04).....	102

Game-Winning Goals

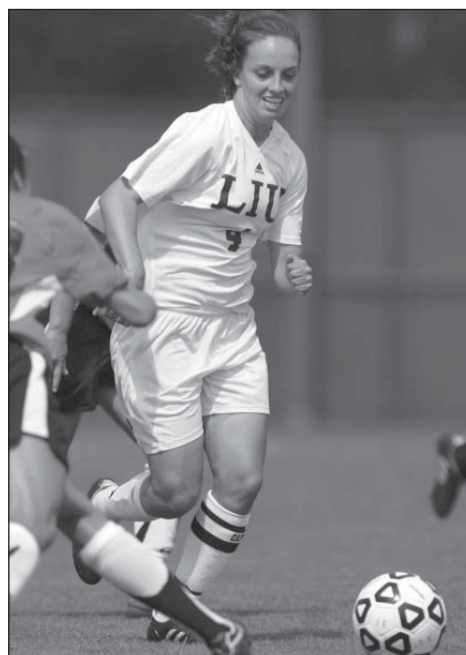
1. Jackie McCormick (2002-05)	12
2. Selima Berisha (2003-06).....	11
3. Larissa Swartzlander (1997-00)	8
4. Nichole Lopez (2001-04).....	5
5. Rosette Rough (1999-02).....	3

Games Played

1. Allison Andreano (2003-06)	79
2. Christine Gans (2003-06)	78
Ashley O'Connor (2003-06).....	78
4. Selima Berisha (2003-06).....	77
5. Erica Anderson (1999-02).....	75
Jackie McCormick (2002-05)	75
7. Fabrianna Rezayat (2002-05)	74
Stephanie Guggenheim (1997-00)	74
Lauren Grant (1998-01)	74
10. Meghann McCormick (2002-05).....	73

Games Started

1. Allison Andreano (2003-06)	79
2. Ashley O'Connor (2003-06).....	78
3. Jackie McCormick (2002-05)	74
4. Katie Durkin (1997-00).....	72
5. Erica Anderson (1999-02).....	71
6. Meghann McCormick (2002-05).....	70
Lauren Grant (1998-01)	70
8. Rosette Rough (1999-02).....	71
Alison Dixon (2001-04).....	71
10. Selima Berisha (2003-06).....	69
Fabrianna Rezayat (2002-05)	69
Nichole Lopez (2001-04).....	69
Patricia Metzger (1998-01)	69



Allison Andreano ranks among the all-time leaders at LIU in nearly every offensive category and is the career leader in assists (18), games played (79) and games started (79).



Mary Jaeger holds the career record for saves with 291 and posted a school-record with a .808 save percentage in 2002.

Saves

- 1. Mary Jaeger (1999-02)..... 291
- 2. Stephanie Kansky (2003-06)..... 274
- 3. Mony Sith (1997)..... 242
- 4. Lauryn McAlister (1997-99)..... 71

Save **Percentage**

- 1. Mony Sith (1997)..... 812
- 2. **Felicia Amaral (2004-present)..... 796**
- 3. Stephanie Kansky (2003-06)..... 790
- 4. Mary Jaeger (1999-2002)..... 726
- 5. Lauryn McAlister (1998)..... 703

Goals Against **Average**

- 1. **Felicia Amaral (2004-present)..... 0.70**
- 2. Stephanie Kansky (2003-06)..... 1.09
- 3. Lauryn McAlister (1997-99)..... 1.73
- 4. Mary Jaeger (1999-2002)..... 1.82
- 5. Amanda Nelson (2001)..... 1.87

Shutouts

- 1. Stephanie Kansky (2003-06)..... 21
- 2. Mary Jaeger (1999-2002)..... 13
- 3. Lauryn McAlister (1998)..... 5
- 4. **Felicia Amaral (2004-present)..... 4**

Wins

- 1. Stephanie Kansky (2003-06)..... 37
- 2. Mary Jaeger (1999-2002)..... 25
- 3. **Felicia Amaral (2004-present)..... 7**
Lauryn McAlister (1998)..... 7

*Active players in **bold**.

Single-Season **Leaders**

Points

- 1. Larissa Swartzlander (1999)..... 24
- 2. Jackie McCormick (2000)..... 22
Julie Hereth (1998)..... 22
- 4. Aly Hanson (2006)..... 19
- 5. Jackie McCormick (2005)..... 18
Selima Berisha (2005)..... 18
Jackie McCormick (2003)..... 18

Goals

- 1. Larissa Swartzlander (1999)..... 12
- 2. Julie Hereth (1998)..... 10
Larissa Swartzlander (2000)..... 10
- 4. **Aly Hanson (2006)..... 9**
- 5. Selima Berisha (2005)..... 7
Selima Berisha (2003)..... 7
Larissa Swartzlander (1997)..... 7

Assists

- 1. Allison Andreano (2006)..... 11
- 2. Nichole Lopez (2003)..... 8
Katie Durkin (1998)..... 8
- 4. Jackie McCormick (2005)..... 6
Jackie McCormick (2003)..... 6
Shanon Evans (1998)..... 6

Shots

- 1. Larissa Swartzlander (2000)..... 60
- 2. Larissa Swartzlander (1999)..... 57
- 3. Jackie McCormick (2005)..... 53
- 4. Jackie McCormick (2003)..... 48
- 5. Larissa Swartzlander (1997)..... 47
Jackie McCormick (2004)..... 47



Julie Hereth posted 10 goals during the 1998 season, which ranks second on the all-time list at LIU.



Game-Winning Goals

1. Jackie McCormick (2005)..... 5
- Larissa Swartzlander (1999) 5
3. **Aly Hanson (2006) 4**
- Selima Berisha (2005) 4
- Jackie McCormick (2004)..... 4
- Selima Berisha (2003)..... 4

Saves

1. Mony Sith (1997)..... 242
2. Mary Jaeger (2000)..... 104
3. Stephanie Kansky (2003) 97
4. Stephanie Kansky (2006) 84
5. Mary Jaeger (1999) 82



Stephanie Kansky holds the career records for wins (37) and shutouts (21) at LIU. She set a single-season record with seven in 2006 and 2003.

Save Percentage

1. Mary Jaeger (2002)..... .808
2. Stephanie Kansky (2003)802
3. Stephanie Kansky (2006)792
4. Stephanie Kansky (2004)784
5. Felicia Amaral (2006)..... .778

Goals Against Average

1. Stephanie Kansky (2005) 0.72
2. Felicia Amaral (2005)..... 0.76
3. Felicia Amaral (2006)..... 0.83
4. Stephanie Kansky (2006) 1.11
5. Stephanie Kansky (2004) 1.20

Shutouts

1. Stephanie Kansky (2006) 7
- Stephanie Kansky (2003) 7
- Mary Jaeger (1999) 7
3. Lauryn McAlister (1998) 5
4. Stephanie Kansky (2005) 4
5. Mary Jaeger (2000) 3
- Felicia Amaral (2005)..... 3

*Active players in **bold**.

Record Breakdown

Individual

Goals

- Game 3 Kim Bishop vs. Wagner (9/28/06)
- 3 Selima Berisha vs. Delaware State (9/6/06)
- 3 L. Swartzlander, 3x, last vs. CCSU (9/24/00)
- Season 12 Larissa Swartzlander, 1999

Assists

- Game 2 15x, last C. Gans vs. Sacred Heart (11/3/06)
- Season 11 Christine Gans (2006)

Points

- Game 6 Kim Bishop vs. Wagner (9/28/06)
- 6 Selima Berisha vs. Delaware State (9/6/06)
- 6 L. Swartzlander, 3x, last vs. CCSU (9/24/00)
- Season 24 Larissa Swartzlander, 1999

Saves

- Game 22 Mony Sith vs. Seton Hall, (8/30/97)
- Season 242 Mony Sith, 1997

Wins

- 13 Stephanie Kansky (2006)
- 7 Stephanie Kansky (2006)
- 7 Stephanie Kansky (2003)
- 7 Mary Jaeger (1999)

Team

- Wins 13 (2005, 2006)
- Losses 16 (1997)
- Unbeaten Streak:
 - 6 2x, last Oct. 20-Nov. 5, 2006
- Highest Winning Pct..... .675 (2005)
- Shutouts in a season..... 11 (2006)
- Shots (Season) 258 (1999)
- Winning Margin 8-0, vs. Delaware State (9/6/06)

Goals

- Game 8 vs. Delaware State (9/6/06)
- Season 37 (2006)
- Fewest Allowed (Season)..... 15 (2005)



Year-By-Year Scoring Leaders

Year	Goals	Assists	Points
2006	A. Hanson (9)	C. Gans (11)	A. Hanson (19)
2005	S. Berisha (7)	J. McCormick (6)	S. Berisha/ J. McCormick (18)
2004	N. Lopez/ J. McCormick (6)	N. Lopez/ A. Andreano (5)	N. Lopez (17)
2003	S. Berizha (7)	N. Lopez (8)	J. McCormick (18)
2002	R. Rough (6)	L. Brosious/ E. Anderson (5)	R. Rough (14)
2001	R. Rough/ N. Dart (4)	E. Anderson (3)	R. Rough/ N. Dart (8)
2000	L. Swartzlander (10)	L. Brosious (4)	L. Swartzlander (22)
1999	L. Swartzlander (12)	J. Aweida (5)	L. Swartzlander (24)
1998	J. Hereth (10)	K. Durkin (8)	J. Hereth (22)
1997	L. Swartzlander (7)	three tied (3)	L. Swartzlander (14)



Ashley O'Connor became the first Blackbird named to the NSCAA/adidas All-Northeast Region Team, earning third team honors in 2006.

NEC Commissioner's Academic Honor Roll

2006-07 Amy Paige, Christine Gans, Tiffany Dunbar

NEC Academic Honor Roll

2006 Nicole Allen, Allison Andreano, Selima Berisha, Catie Blake, Erica Chong, Tiffany Dunbar, Christine Gans, Lizelle Jackson, Stephanie Kansky, Ashley O'Connor, Kelly O'Connell, Amy Paige

2005 Allison Andreano, Selima Berisha, Erica Chong, Tiffany Dunbar, Christine Gans, Stephanie Kansky, Jackie McCormick, Meghann McCormick, Ashley O'Connor, Amy Paige, Fabrieanna Rezatay

2004 Allison Andreano, Selima Berisha, Allison Dixon, Tiffany Dunbar, Christine Gans, Jackie McCormick, Meghann McCormick, Tina Prickett, Fabrieanna Rezatay

All-Northeast Conference

2006	Allison Andreano, M Aly Hanson, F Ashley O'Connor, D Catie Blake, D	First Team First Team First Team Second Team
2005	Jackie McCormick, F Fabrieanna Rezatay, D Allison Andreano, M Stephanie Kansky, GK	First Team First Team Second Team Second Team
2004	Jackie McCormick, F Nichole Lopez, M Tiffany Clendenning, D	First Team First Team Second Team
2003	Selima Berisha, F Jackie McCormick, F Nichole Lopez, M Ashley O'Connor, M Stephanie Kansky, GK	Second Team Second Team Second Team Second Team Second Team
2000	Lauren Grant, M Erika Lee, D Larissa Swartzlander, F Patricia Metzger, D	First Team First Team First Team Second Team
1999	Larissa Swartzlander, F Katie Durkin, M	First Team Second Team
1998	Julie Hereth, F Leah Patriss, D	First Team Second Team

NSCAA/adidas All-Northeast Region

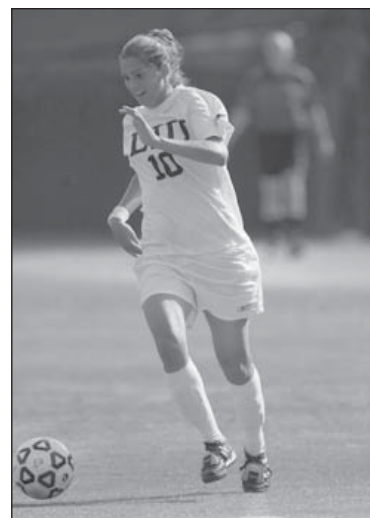
2006 Ashley O'Connor Third Team

Soccer Buzz All-Northeast Region

2006 Ashley O'Connor Third Team
2005 Fabrieanna Rezatay Third Team
2003 Stephanie Kansky All-Freshman

CoSIDA Academic All-District 1

2006 Selima Berisha Second Team



Fabrieanna Rezatay was named All-NEC First Team and earned a spot on the Soccer Buzz All-Northeast Region Third Team in 2005.



- A -

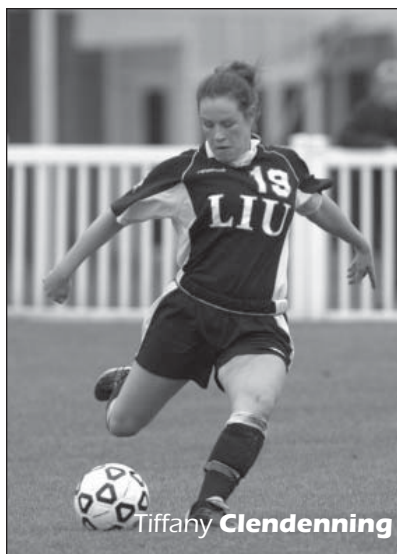
- Kim Adu..... 1997-98
- Nicole Allen.....2005-**
- Felicia Amaral.....2004-**
- Erica Anderson 1999-2002
- Allison Andreano 2003-06
- Jamie Aweida 1999
- Liz Bajo2004

- B -

- Donna Barone1997
- Lizette Belaustegui1997
- Selima Berisha..... 2003-06
- Kim Bishop2006-**
- Catie Blake2004-**
- Laura Brosius 1999-2002
- Ashley Brown.....2005

- C -

- Donna Carvalho2001
- Christina Chatman 2003-04
- Erica Chong..... 2003-06
- Malori Clarke-Cameron.... 1999-2002
- Tiffany Clendenning..... 2001-04
- Whitney Collins-Cephers2005



Tiffany Clendenning

- D -

- Natalie Dart.....2001
- Danielle Davis1997
- Tasia Davis2006-**
- Katrina Day 2003-04
- Alison Dixon 2001-04
- Tiffany Dunbar..... 2003-06
- Katie Durkin 1997-2000

- E -

- Aryn Epstein.....2003
- Shannon Evans 1998-99



Lauren Grant

- F -

- Aminata Fall 2003-05
- Julie Flantzer..... 1999-2001

- G -

- Christine Gans..... 2003-06
- Morgan Gantt.....2003
- Lauren Grant 1998-2001
- Stephanie Guggenheim..... 1997-2000

- H -

- Aly Hanson.....2006-**
- Darcy Hanson 2000-01
- Julie Hereth 1998-99

- I -

- Robyn Iglesias 1997-2000

- J -

- Lizelle Jackson2006
- Mary Jaeger..... 1999-2002
- Carolina Johansson1999

- K -

- Stephanie Kansky..... 2003-06
- Neddie King2006-**

- L -

- Dalia Lamming..... 1997-2000
- Erika Lee..... 1997-2000
- Frances Li 1997-99
- Nicole Lopez..... 2001-04

- M -

- Lauryn McAlister 1998-99
- Meredith McAlister..... 1999-2000
- Jackie McCormick 2002-05
- Meghann McCormick 2002-05
- Patricia Metzger 1998-2001

- N -

- Amanda Nelson2001
- Elisabeth Nilsson1999
- Holly Nixon2002

- O -

- Kelly O'Connell2005-**
- Ashley O'Connor..... 2003-06
- Christina O'Connor2005-**
- Maureen O'Neill.....2001
- Tokunbo Olisemeka.....1997

- P -

- Amy Paige.....2004-**
- Leah Patriss 1998-99
- Erin Peot.....1997
- Jenae' Piper2006-**
- Tina Prickett..... 2003-04

- R -

- Felicia Reynolds.....2006-**
- Fabiana Rezayet 2002-05
- Rosette Rough 1999-2002

- S -

- Angela Schumacher2006-**
- Sara Sheen 2001-02
- Mony Sith.....1997
- Kristin Skinner2002
- Larissa Swartzlander 1997-2000

- T -

- Embrie Tapia2003
- Tiffany Toale.....2001
- Caley Troutman.....2004-**

- U -

- Ashley Uske2002



Patricia Metzger



Rutgers Scarlet Knights

Aug. 31 • Yurcak Field • 7:00 p.m.

Location New Brunswick, N.J.
 Athletic Director Robert E. Mulcahy III
 Conference BIG EAST
 Home Field Yurcak Field
 Head Coach/Record Glen Crooks/123-109-26
 Record at School 78-54-17
 Assistant Coaches Mike O'Neill, Karina LeBlanc
 Soccer Office Phone (732) 445-4073
 2006 Overall Record/Conference (Finish) 16-3-4/8-1-2 (2nd)
 Soccer SID TBA
 SID E-Mail TBA
 SID Phone/Fax (732) 445-4200/(732) 445-3063
 Website www.scarletknights.com



NJIT Highlanders

Sept. 2 • LIU Field • 1:00 p.m.

Location Newark, N.J.
 Athletic Director Lenny Kaplan
 Conference United Soccer Conference
 Home Field Lubetkin Field
 Head Coach/Record Alyssa Radu/14-29-5
 Record at School same
 Assistant Coach Kevin Leacock
 Soccer Office Phone (973) 596-2928
 2006 Overall Record/Conference (Finish) 1-13-1/(n/a)
 Soccer SID Stephanie Pillari
 SID E-Mail pillari@njit.edu
 SID Phone/Fax (973) 596-8324/(973) 596-8295
 Website www.njithighlanders.com



New Mexico Lobos

Sept. 7 • UNM Soccer Complex • 7:00 p.m.

Location Albuquerque, N.M.
 Athletic Director Paul Krebs
 Conference Mountain West
 Home Field UNM Soccer Complex
 Head Coach/Record Kit Vela/40-58-16
 Record at School same
 Assistant Coaches Jorge Vela, Kristen Graczyk
 Soccer Office Phone (505) 925-5756
 2006 Overall Record/Conference (Finish) 8-7-5/2-2-3 (3rd)
 Soccer SID Chris Deal
 SID E-Mail cdeal@unm.edu
 SID Phone/Fax (505) 925-5523/(505) 925-5529
 Website www.golobos.com



Utah Valley State Wolverines

Sept. 9 • UNM Soccer Complex • 1:00 p.m.

Location Orem, Utah
 Athletic Director Mike Jacobsen
 Conference United Soccer Conference
 Home Field Wolverine Field
 Head Coach/Record Brent Anderson/7-11-1
 Record at School same
 Assistant Coaches Rachelle Dixon
 Soccer Office Phone (801) 863-7495
 2006 Overall Record/Conference (Finish) 7-11-1/0-3 (3rd)
 Soccer SID Brent Johnson
 SID E-Mail johnsobe@uvsc.edu
 SID Phone/Fax (801) 863-6231/ (801) 863-8813
 Website www.wolverinegreen.com



Lafayette Leopards

Sept. 14 • LIU Field • 6:00 p.m.

Location Easton, Pa.
 Athletic Director Bruce McCutcheon
 Conference Patriot League
 Home Field Metzgar Fields
 Head Coach/Record Mick Statham/5-10-2
 Record at School same
 Assistant Coaches Brian Herr
 Soccer Office Phone (610) 330-5458
 2006 Overall Record/Conference (Finish) 5-10-2/1-5-1 (6th)
 Soccer SID Matt Panto
 SID E-Mail pantom@lafayette.edu
 SID Phone/Fax (610) 330-5897/(610) 330-5702
 Website www.goleopards.com



Columbia Lions

Sept. 16 • LIU Field • 3:00 p.m.

Location New York, N.Y.
 Athletic Director Dr. M. Dianne Murphy
 Conference Ivy League
 Home Field Columbia Soccer Stadium
 Head Coach/Record Kevin McCarthy/108-96-22
 Record at School same
 Assistant Coaches Werner T. Dasbach, Michele O'Brien
 Soccer Office Phone (212) 854-4559
 2006 Overall Record/Conference (Finish) 10-5-3/6-0-1 (1st)
 Soccer SID Pete McHugh
 SID E-Mail ptm2102@columbia.edu
 SID Phone/Fax (212) 854-7064/(212) 854-8168
 Website www.gocolumbialions.com



Binghamton Bearcats

Sept. 22 • West Gym Field • 6:00 p.m.

Location Vestal, N.Y.
 Athletic Director Dr. Joel Thirer
 Conference America East
 Home Field Bearcat Sports Complex
 Head Coach/Record Jeff Leightman/99-54-17
 Record at School same
 Assistant Coaches Sarah McClellan
 Soccer Office Phone (607) 777-6439
 2006 Overall Record/Conference (Finish) 7-8-3/4-4 (4th)
 Soccer SID John Hartrick
 SID E-Mail jhartri@binghamton.edu
 SID Phone/Fax (607) 777-6800/(607) 777-4597
 Website www.bubearcats.com



American Eagles

Sept. 28 • Reeves Athletic Complex • 2:00 p.m.

Location Washington, D.C.
 Athletic Director Keith Gill
 Conference Patriot League
 Home Field Reeves Athletic Complex
 Head Coach/Record Mike Brady/62-70-14
 Record at School same
 Assistant Coaches Valerie Lawrence
 Soccer Office Phone (202) 885-3047
 2006 Overall Record/Conference (Finish) 9-7-2/3-3-1 (5th)
 Soccer SID Alison Luberski
 SID E-Mail luberski@american.edu
 SID Phone/Fax (202) 885-3032/(202) 885-3033
 Website www.aueagles.com



Opponents



Siena Saints
Sept. 30 • LIU Field • 1:00 p.m.

Location Loudonville, N.Y.
 Athletic Director John D'Argenio
 Conference Metro Atlantic Athletic
 Home Field Siena Field
 Head Coach/Record Steve Karbowski/60-72-12
 Record at School same
 Assistant Coaches Noel Cox, Daniel Lindemann
 Soccer Office Phone (518) 782-6826
 2006 Overall Record/Conference (Finish) 9-8-2/5-3-1 (4th)
 Soccer SID Stephen Dombroski
 SID E-Mail sdombroski@siena.edu
 SID Phone/Fax (518) 783-2377/(518) 783-2992
 Website www.sienasaints.com



Monmouth Hawks
Oct. 5 • The Great Lawn • 3:00 p.m.

Location West Long Branch, N.J.
 Athletic Director Dr. Marilyn McNeil
 Conference Northeast
 Home Field The Great Lawn
 Head Coach/Record Krissy Turner/99-101-20
 Record at School 87-63-18
 Assistant Coaches Bonnie Young, Harvey Meldrum
 Soccer Office Phone (732) 571-4410
 2006 Overall Record/Conference (Finish) 14-4-2/7-1-1 (2nd)
 Soccer SID Chris Tobin
 SID E-Mail ctobin@monmouth.edu
 SID Phone/Fax (732) 263-5180/(732) 571-3535
 Website www.gomuhawks.com



Mount St. Mary's Mountaineers
Oct. 7 • Waldron Family Stadium • 1:00 p.m.

Location Emmitsburg, Md.
 Athletic Director Lynne Phelan Robinson
 Conference Northeast
 Home Field Waldron Family Stadium
 Head Coach/Record Tom Gosselin/23-27-2
 Record at School First Season
 Assistant Coaches Chris Stack
 Soccer Office Phone (301) 447-3803
 2006 Overall Record/Conference (Finish) 4-15-0/2-7 (t-8th)
 Soccer SID Mark Vandergrift
 SID E-Mail Vandergrift@msmary.edu
 SID Phone (301) 447-5386/(301) 447-5300
 Website www.mountathletics.com



Wagner Seahawks
Oct. 13 • Lower Athletic Field • 1:00 p.m.

Location Staten Island, N.Y.
 Athletic Director Walt Hamline
 Conference Northeast
 Home Field Wagner College Stadium
 Head Coach/Record Mike Minielli /192-152-31
 Record at School 2-16-0
 Assistant Coaches TBA
 Soccer Office Phone (718) 390-3156
 2006 Overall Record/Conference (Finish) 2-16-0/2-7-0 (9th)
 Soccer SID Kevin Murawinski
 SID Email kevin.murawinski@wagner.edu
 SID Phone/Fax (718) 39-3213/(718) 390-3347
 Website www.wagnerathletics.com



Fairleigh Dickinson Knights
Oct. 19 • LIU Field • 6:00 p.m.

Location Teaneck, N.J.
 Athletic Director David Langford
 Conference Northeast
 Home Field University Stadium
 Head Coach/Record Renee Montana/84-75-9
 Record at School 4-12-1
 Assistant Coaches Marguerite Ferrell, Catherine Gordon
 Soccer Office Phone (201) 692-2007
 2006 Overall Record/Conference (Finish) 4-12-1/3-6 (7th)
 Soccer SID Wes Heinel
 SID E-mail heinelwr@fdi.edu
 SID Phone/Fax (201) 692-2204/(201) 692-9361
 Website www.fduknight.com



Sacred Heart Pioneers
Oct. 21 • LIU Field • 1:00 p.m.

Location Fairfield, Conn.
 Athletic Director C. Donald Cook
 Conference Northeast
 Home Field Campus Field
 Head Coach/Record Kim Banner/13-23-2
 Record at School same
 Assistant Coaches Joe Mendoca, Paulo DeOlivera
 Soccer Office Phone (203) 396-8123
 2006 Overall Record/Conference (Finish) 6-13-1/5-3-1 (4th)
 Soccer SID Gene Gumbs
 SID E-Mail gumbsg@sacredheart.edu
 SID Phone/Fax (203) 396-8127/(203) 371-7889
 Website www.sacredheartpioneers.com



Central Connecticut State Blue Devils
Oct. 26 • CCSU Soccer Field • 3:00 p.m.

Location New Britain, Conn.
 Athletic Director Charles "CJ" Jones
 Conference Northeast
 Home Field Central Connecticut Soccer Field
 Head Coach/Record Mick D'Arcy/80-53-8
 Record at School same
 Assistant Coaches Shawn Kelly, Jen Tietjen Prozzo
 Soccer Office Phone (860) 832-3092
 2006 Overall Record/Conference (Finish) 8-9-2/5-2-2 (3rd)
 Soccer SID Jason Stronz
 SID E-Mail stronzjam@ccsu.edu
 SID Phone/Fax (860) 832-3057/(860) 832-3084
 Website www.ccsubluedevils.com



Quinnipiac Bobcats
Oct. 28 • Bobcat Field • 4:00 p.m.

Location Hamden, Conn.
 Athletic Director Jack McDonald
 Conference Northeast
 Home Field Bobcat Field
 Head Coach/Record Dave Clarke/72-65-11
 Record at School same
 Assistant Coaches Jenny Wilkin, Stephen Coxon
 Soccer Office Phone (203) 582-5315
 2006 Overall Record/Conference (Finish) 9-7-2/3-4-2 (6th)
 Soccer SID TBA
 SID E-Mail TBA
 SID Phone/Fax (203) 582-5387/(203) 582-5385
 Website www.quinnipiacbobcats.com



Robert Morris Colonials
Nov. 2 • LIU Field • 4:00 p.m.

Location Moon Township, Pa.
Athletic Director Craig Coleman
Conference Northeast
Home Field North Athletic Complex
Head Coach/Record John Kowalski/27-80-6
Record at School same
Assistant Coaches TBA
Soccer Office Phone (412) 262-8631
2006 Overall Record/Conference (Finish) 6-13-0/2-7-0 (t-8th)
Soccer SID Jim Duzyk
SID E-Mail duzyk@rmu.edu
SID Phone/Fax (412) 262-8314/(412) 262-8557
Website www.rmucolonials.com



Saint Francis (Pa.) Red Flash
Nov. 4 • LIU Field • 1:00 p.m.

Location Loretto, Pa.
Athletic Director Bob Krimmel
Conference Northeast
Home Field Stokes Soccer Complex
Head Coach/Record Brenda van Stralen/25-25-7
Record at School same
Assistant Coaches TBA
Soccer Office Phone (814) 472-3104
2006 Overall Record/Conference (Finish) 8-8-2/4-3-2 (5th)
Soccer SID Bob Volkert
SID E-Mail rvolkert@francis.edu
SID Phone/Fax (814) 472-3128/(814) 472-3196
Website www.goredflash.com

All-Time Series History

Opponent	W-L-T	1st Meeting	Last Meeting	Streak		W-L-T	1st Meeting	Last Meeting	Streak
Albany	2-0-0	2002, W 2-1	2003, W 2-0	W2	Northeastern	1-3-0	1997, L 1-3	2003, W 1-0	L1
American		First Meeting			Northern Arizona	0-1-0	2000, L 2-3	--	L1
Arizona	0-1-0	2000, L 1-2	--	L1	Oregon State	0-1-1	2005, L 1-3	2006, T 1-1	T1
Binghamton	1-1-0	2005, L 0-1	2006, W 1-0	W1	Pacific	0-1-0	2006, L 0-3	--	L1
Bucknell	0-1-0	2002, L 0-1	--	L1	Providence	0-1-0	2003, L 0-2	--	L1
Cal St. Northridge	0-1-0	2003, L 0-3	--	L1	Quinnipiac	4-7-1	1997, L 1-3	2006, W 2-1	W2
Central Conn. St.	3-9-0	1997, L 0-3	2006, L 0-1	L3	Rider	4-2-0	1997, L 0-3	2006, W 2-0	W3
Colgate	0-1-0	2001, L 1-2	--	L1	Robert Morris	7-2-1	1997, T 1-1	2006, W 1-0	W2
Columbia	0-4-0	2001, L 1-3	2006, L 0-2	L4	Rutgers		First Meeting		
Delaware State	1-0-0	2006, W 8-0	--	W1	Sacred Heart	5-4-1	1999, W 3-2	2006, W 2-0	W3
Drexel	2-5-0	1997, L 0-1	2006, L 1-2	L1	Saint Francis (Pa.)	6-5-0	1997, W 3-2	2006, W 2-0	W3
Fairfield	1-0-0	2000, W 4-3	--	W1	St. John's	0-4-0	1999, L 1-6	2004, L 1-2	L4
Fairleigh Dickinson	4-3-0	2000, W 3-1	2006, W 3-1	W2	Saint Joseph's	0-2-1	2000, L 1-2	2003, T 1-1	T1
Fordham	2-0-0	1999, W 3-0	2004, W 2-1	W2	Saint Mary's (Calif.)	0-1-0	2006, L 1-3	--	L1
Hawaii	0-1-0	2002, L 1-6	--	L1	Saint Peter's	3-1-0	1997, L 0-3	2004, W 4-1	W3
Hofstra	0-4-0	1997, L 0-7	2000, L 2-4	L4	Seton Hall	0-1-0	1997, L 0-3	--	L1
Iona	1-2-0	1997, L 0-1	2006, L 0-2	L1	Siena	1-1-1	1997, L 2-4	1999, T 0-0	T1
Lafayette	1-1-1	1997, L 0-3	1999, T 1-1	T1	SW Texas St.	1-0-0	1999, W 1-0	--	W1
La Salle	0-3-0	1998, L 0-2	2000, L 1-6	L3	Stanford	0-1-0	2006, L 0-4	--	L1
Long Beach St.	0-1-0	2002, L 0-5	--	L1	Stetson	1-0-0	1998, W 1-0	--	W1
Manhattan	3-1-0	1997, L 0-2	2002, W 3-1	W3	Stony Brook	2-0-0	2004, W 1-0	2006, W 1-0	W2
Marist	1-1-0	2002, L 1-2	2003, W 2-0	W1	Tampa	0-0-1	1998, T 2-2	--	T1
Maryland	0-1-0	1999, L 0-6	--	L1	Temple	1-1-0	2001, L 0-3	2005, W 3-0	W1
UMBC	1-4-1	1997, L 0-6	2002, L 1-2	L2	Texas	0-1-0	2006, L 0-4	--	L1
Massachusetts	0-1-0	2000, L 0-6	--	L1	UC Riverside	0-1-0	2003, L 0-4	--	L1
Miami (Fla.)	0-1-0	1999, L 0-2	--	L1	UNLV	0-1-0	2004, L 2-3	--	L1
Monmouth	6-5-0	1997, L 0-3	2006, W 2-0	W5	Utah Valley St.	1-0-0	2004, W 1-0	--	W1
Mount St. Mary's	6-3-1	1997, L 0-2	2006, W 3-0	W1	Wagner	8-2-0	1997, L 0-6	2006, W 6-0	W5
New Mexico		First Meeting			Washington State	0-1-0	2005, L 0-1	--	L1
NJIT		First Meeting							

*2007 opponents in bold.



Since its inception in 1981, the Northeast Conference has charted a course of steady growth that continues to this day. Now entering its 27th year, the NEC remains committed to the original principles the conference was founded upon - academic integrity and development, athletic achievement, community outreach and good sportsmanship - while capitalizing on opportunities to build its reputation both regionally and nationally.

When the Northeast Conference was first established as the ECAC-Metro Conference back in 1981, the league's founders had one simple goal in mind: to create a competitive Division I men's basketball conference for unaffiliated schools on the Eastern seaboard. A single-sport entity at its inception, even the league's most ardent supporters during its formative years could not have envisioned a transformation into a burgeoning 11-member, 21-sport conference. The remarkable success story of the conference began to unfold in 1985, when the league began sponsoring additional sports. Three years later, a change of name was in order and the Northeast Conference as we know it today was born. With membership and sport sponsorship continuing to grow over the next decade and beyond, the NEC now enjoys qualification or play-in access to 13 different NCAA Championships (baseball, men's and women's basketball, field hockey, men's and women's

golf, women's lacrosse, men's and women's soccer, softball, men's and women's tennis and women's volleyball).

Though the NEC has featured various incarnations since its inception, charter members Fairleigh Dickinson, Long Island, Robert Morris, St. Francis (N.Y.), Saint Francis (Pa.) and Wagner remain part of the current 11-school alignment. They are joined by Monmouth (admitted in 1985), Mount St. Mary's (1989), Central Connecticut State (1997), Quinnipiac (1998) and Sacred Heart (1999). NEC expansion, which culminated in 1999 with the addition of Sacred Heart, has given the league a five-state geographic footprint with access to such major media markets as New York City, Baltimore, Pittsburgh and Hartford.

With the addition of four sports in the last decade, NEC member institutions now compete in 21 championship sports: baseball, men's and women's basketball, men's and women's cross country, field hockey, football, men's and women's golf, men's and women's indoor track and field, women's lacrosse, men's and women's outdoor track and field, men's and women's soccer, softball, women's swimming, men's and women's tennis, and women's volleyball.



Brenda Weare
NEC Commissioner

2006 NEC Standings

School	NEC	Pts	Overall	Pct
1. Long Island*	8-1	24	13-8-1	.614
2. Monmouth*	7-1-1	22	14-4-2	.750
3. Central Conn. St.*	5-2-2	17	8-9-2	.474
4. Sacred Heart*	5-3-1	16	6-13-1	.325
5. St. Francis (Pa.)	4-3-2	14	8-8-2	.500
6. Quinnipiac	3-4-2	11	9-7-2	.556
7. Fairleigh Dickinson	3-6	9	4-12-1	.265
8. Robert Morris	2-7	6	6-13	.316
Mount St. Mary's	2-7	6	4-15	.211
Wagner	2-7	6	2-16	.111

Individual Statistical Leaders

Points	G	A	Pts.	Goals Against Avg.	GA	GAA
Lopez, MU	13	10	36	Buffa, MU	20	0.81
McCavanagh, CCSU	7	6	20	Stockman, SFPA	18	0.99
Hoyer, MU	7	6	20	Lusto, QU	17	1.08
Donovan, QU	8	3	19	Kansky, LIU	22	1.11
Hanson, LIU	9	1	19	Herd, CCSU	10	1.23

Goals	GP	No.	Save Pct.	Sv.	Pct.
Lopez, MU	20	13	Herd, CCSU	50	.833
Hanson, LIU	22	9	Stockman, SFPA	76	.809
Donovan, QU	16	8	Onufer, RMU	110	.803
McCavanagh, CCSU	18	7	Buffa, MU	63	.797
Hoyer, MU	20	7	Kansky, LIU	84	.792

Assists	GP	No.	Shutouts	SHO
Gans, LIU	22	11	Kansky, LIU	7
Lopez, MU	20	10	Stockman, SFPA	7
McCavanagh, CCSU	18	6	Lusto, QU	5
Hoyer, MU	20	6	Mocarski, SHU	5
Flodin, SHU	20	5		

NEC Championship Results

Semifinals: #1 Long Island 2, #4 Sacred Heart 0
 #2 Monmouth 2, #3 Central Conn. St. 1
 Final: #1 Long Island 2, #2 Monmouth 0
 (MVP: **Christine Gans, LIU**)

2006 All-NEC Teams

First Team	Player of the Year
Aly Hanson, LIU	F Andrea Lopez, Monmouth
Andrea Lopez, MU	F
Jessica McCavanagh, CCSU	F Defensive Player of the Year
Allison Andreano, LIU	M Brittani Heller, Monmouth
Lisa Burbige, SHU	M
Ciara Crinion, CCSU	M Rookie of the Year
Amy Hoyer, MU	M Andrea Lopez, Monmouth
Ashley O'Connor, LIU	D
Brittani Heller, MU	D Coach of the Year
Jen Hirsch, QU	D Krissy Turner, Monmouth
Anna Lebo, MSM	GK

Second Team	
Illiana Blackshear, MU	F
Susan Donovan, QU	F
Ashlie Knowles, SFPA	F
Britney Dupee, SHU	M
Karise Hilt, CCSU	M
Kirsten Hoffsmith, SFPA	M
Leisl Lissfelt, QU	M
Catie Blake, LIU	D
Jessica Davies, CCSU	D
Alyssa Long, SHU	D
Katie Buffa, MU	GK



Dr. David Steinberg

President

Dr. David Steinberg, the ninth president of Long Island University, was appointed April 1, 1985. During his tenure, the University has experienced a renaissance becoming one of the largest and most comprehensive private universities in the United States. Under his leadership, the University's endowment has increased nearly tenfold from \$4.8 million to over \$80 million, and its enrollment has risen from 19,000 to over 28,500. He has spearheaded a capital improvement plan, which has led to \$400 million in investments in new construction and major renovations, resulting in vast improvements in the quality of study and life on each of the University's campuses, especially, the C.W. Post and Brooklyn Campuses. New doctoral programs have been added and operating reserves have been created and increased.

Born in New York City, Dr. Steinberg, is the son of the late Rabbi Milton Steinberg of Manhattan's Park Avenue Synagogue. He was educated at Phillips Academy at Andover, Malvern College in England, and Harvard College, from which he graduated magna cum laude and Phi Beta Kappa. After a Fulbright year at the University of the Philippines and a year at Columbia University on a Woodrow Wilson Fellowship, he returned to Harvard, where he received both a master's in East Asian Studies (1963) and a Ph.D. in History (1964). Dr. Steinberg also has received several honorary degrees. He began his teaching career in the Department of History at the University of Michigan, where he rose to the rank of full professor. In 1973, he joined the administration of Brandeis University as Executive Assistant to the President, becoming Vice President and University Secretary in 1977.

The author of numerous books and articles on Southeast Asia and, in particular, Philippine history, Steinberg has taught, lectured and written about this important area of the world for four decades. His first book, "Philippine Collaboration in World War II," won the University Press Award in 1969. "The Philippines: A Singular and a Plural Place," now in its fourth edition, was described by U.S. Ambassador to the Philippines, Nicholas Platt, as "the best single-volume guide to understanding the Philippines, past and present." "Dr. Steinberg also edited and co-authored both editions of "In Search of Southeast Asia," one of the major textbooks on the area. He recently collaborated with top scholars from around the world to co-author "The Emergence of Modern Southeast Asia," a new and multifaceted history of this complex region. He is a co-author of "Religion and Religiosity in the Philippines and Indonesia: Essays on State, Society and Public Creeds," 2005.



Gale Stevens Haynes

Provost

"I am a big dreamer," says Gale Stevens Haynes, Provost of Long Island University's Brooklyn Campus and an exemplary educator, lawyer and role model. "If you don't dream, nothing ever changes."

As head of a doctoral-granting institution, Provost Haynes has achieved many of her dreams both as an educator and a parent. Today, she oversees one of the most diverse campuses in the country, with more than 11,000 students, managing an annual budget of over \$150 million. Provost Haynes has led her institution through a remarkable renaissance: doubling student enrollment, creating new facilities, diversifying faculty, forging links with the community and transforming the Campus into a vibrant urban academic center. One of the Provost's visions – a modern performing arts center for the students and the community – became a reality in 2005. The centerpiece of the new complex is the wood-paneled, 320-seat Kumble Theater for the Performing Arts, where cutting-edge and traditional dance, music and theater performances regularly draw standing-room-only crowds from the Campus and the surrounding region.

In 2006, under the Provost's leadership, the Campus completed the biggest building project in its history: the \$45 million Wellness, Recreation and Athletic Center. With state-of-the-art fitness and aquatic facilities for students and other members of the Campus, the WRAC also features an outstanding, 2,500-seat venue, open to the public for athletic and civic events. Its Harriet Rothkopf Heilbrunn '32 Academic Nursing Center offers an extensive array of free preventive health services as well as a home for Brooklyn's first Lupus outreach and education office, all in service to the entire community. A wider array of wellness services, including special cluster of intervention programs addressing asthma and lead poisoning in children, are planned to begin in 2007. In recent months, the Provost also has overseen a dramatic re-landscaping that has nearly tripled the green space for the central campus, with native plants and amenities that create a serene environment and enhance the "college experience" on this urban campus.

Involved in higher education for three decades, Provost Haynes began her association with the Brooklyn Campus as a student, earning a bachelor's degree in English and a master's degree in counseling. She started her career as director of the Higher Education Opportunity Program. Upon completing her law degree at St. John's University in 1983, she became Long Island University's legal counsel before assuming the position of Provost in 1989.

A Queens, N.Y., native, Provost Haynes grew up with a love of books and the spoken word, which she attributes to her West Indian heritage. She has passed on that love of learning to her three daughters – a doctor, a lawyer and an educator – whom she raised as a divorced single parent. "Parenting is a training ground for being a good CEO," she maintains. Acting on her belief that a sound education is the key to realizing one's dreams, Provost Haynes is dedicated to creating an urban campus whose varied pathways help students to realize theirs.



John Suarez
Director of Athletics

John Suarez enters his 11th year as director of athletics at Long Island University, where he has overseen a dramatic growth of the school's athletic department. During his tenure, Suarez has witnessed a sensational rise in the Blackbirds' on-field success with 23 Northeast Conference championships and 20 NEC Coach of the Year awards. Under his guidance, Long Island captured its first-ever NEC Women's Commissioner's Cup in 2006.

Academic success has also been a priority in Suarez's tenure, as witnessed by the department's cumulative 3.02 grade-point average following the 2006-07 season. It was the sixth consecutive year that the department's cumulative GPA was above 3.0. In addition, LIU was cited with two National Graduation Awards, sponsored by *USA Today*, in the last six years.

Suarez has also spearheaded the department as it has made major improvements to its facilities. The 2006 opening of the Wellness, Recreation and Athletic Center culminated a decade of facility improvement at the Brooklyn Campus. The \$40 million facility houses a 2,500-seat arena, an NCAA regulation-size swimming pool and a state-of-the-art fitness center. The WRAC also features a wellness center that is geared toward a growing Brooklyn community.

The Wellness Center came on the heels of other improvements that included the addition of lights to LIU Field in 1999, Field Turf in 2001 and bleachers for softball and baseball in 2003. Suarez has also overseen upgrades to the weight room, locker rooms and scoreboards.

Suarez's work is not done, as there are plans to further upgrade to the Blackbirds' facilities, including an extensive redesign of LIU Field and the addition of a bubble atop the Wellness Center, covering the track and tennis courts.

With a keen eye toward the future, Suarez has been mindful of LIU's past. He helped spearhead the creation of the LIU Athletics Hall of Fame in 2000 with 11 inaugural members, as well as the reestablishment of the Blackbird Club in 2002.

Suarez has also continued to make his presence felt outside the downtown Brooklyn campus. He served on the NCAA Management Council from 2003-06 and was a member of the Division I Budget Committee from 2004-06. Prior to that, Suarez was on the NCAA Championship Cabinet from 2000-03 and served as chair of the NEC Athletic Directors Committee from 2000-02.

Suarez arrived following a three-year stint as athletics director at Mercer County College in Trenton, N.J., which won two national championships and produced 11 regional titles in that span. Eighty percent of the athletes in his time attended four-year schools and every team produced a winning record during his last two years.

Suarez earned his bachelor's degree in marketing at Fairleigh Dickinson University, where he competed on the baseball team. He completed his master's in sports management at East Stroudsburg University.



Margaret Alaimo
Senior Associate A.D.
Senior Woman Administrator



Greg Fox
Associate Director of Athletics
External Operations



Matthew Scally
Associate Director of Athletics
Director of Compliance



Danny O'Connor
Head Athletic Trainer



Erica Marciano
Assistant Athletic Trainer



Junko Yazawa
Assistant Athletic Trainer

The campus' athletic training staff is dedicated to the prevention, rehabilitation and recovery needs of over 200 student-athletes for the school's 17 athletic teams. Headed by three full-time athletic trainers, the staff consists of several graduate and undergraduate trainers who are enrolled in LIU's renowned athletic training program.

Because of the extreme availability of the training program's resources, great attention and detail is placed on each athlete in order to provide the best care and best specific plan to ensure the athlete's long-range health goals are met.

In the winter of 2005, a state-of-the-art athletic training room opened in the lower level of the Wellness, Recreation and Athletic Center. It is fully equipped with the latest modalities and rehabilitation equipment in taking care of the needs of Blackbird athletes.

The Wellness Center also houses resources and programs to promote the health of community residents. Cardiac rehabilitation, orthopedic therapy and asthma education services are available. In addition, the facility features specialized equipment, such as a separate therapy pool equipped with a hydraulic floor. In addition to providing treatment and rehabilitation, the athletic training staff provides education to student-athletes regarding health matters and concerns in order to aid students in achieving optimum health and conditioning.

The sports medicine program is under the direction of Danny O'Connor, who was promoted to head trainer in 2000. O'Connor, who started with LIU as a graduate student in 1994, is responsible for maintaining the operation of the athletic training room. His duties also include the coordination of medical coverage and the administering of the athletic department's drug education and testing program. He also is in charge of scheduling appointments with the program's physician, coordinating preseason physical exams and designing treatment and rehabilitation programs.

O'Connor consults regularly with athletic department orthopedic surgeon Dr. Howard Levy, a doctor of orthopedic surgery and sportsmedicine at Lenox Hill Hospital in New York City. Levy and a network of medical staff, mostly from Lenox Hill, work closely with LIU athletes for their surgical and rehabilitative needs.



Richard James
Strength and Conditioning Coach

The strength and conditioning program at Long Island University is designed to help student-athletes maximize their athletic potential and performance while reducing the risk of injury.

Coordinated by Richard James, a former Blackbird and All-American in the 400-meter dash, specialized workout programs are tailored to enhance athletes' physical abilities in their specific sports, as each sport places different demands on the body. Included in his regimen are weight training, power and speed training, flexibility training, plyometrics and conditioning.

The weight training room is located in the new state-of-the art Wellness, Recreation and Athletic Center. The facility houses not only a fitness center equipped with the latest equipment - from stationary bikes with built in televisions to a full weight station - but also a separate weight room especially geared for student-athletes.

There is a full range of equipment to meet the diverse needs of each student-athlete from preseason conditioning to the offseason variety. Treadmills and stationary bikes, free weights and press machines are just some of the pieces of equipment which make it one of the most complete facilities in the Northeast Conference.



Nora Mavashev
Academic Enhancement Coordinator

The balancing of academic achievement and athletic success is the primary concern of LIU's Department of Athletics. The University's student-athlete academic services are designed to help the department fulfill its commitment to all student-athletes in their pursuit of academic excellence.

At LIU, there is a high priority placed on academic integrity, along with an opportunity to take advantage of extraordinary academic programs. The goal of the LIU Athletic Department is to give student-athletes an avenue to seek help, whether it be for tutorial assistance, scheduling of classes, personal or career development or to improve on their test-taking and time-management skills.

In her fourth year, Nora Mavashev is responsible for monitoring academic progress of the student-athletes, ensuring they meet and exceed the University's academic goals in compliance with NCAA and institutional standards. In conjunction with the director and senior associate director of athletics, Mavashev has formed close relationships with the academic advisement office and counseling center to assist the student-athlete in negotiating the demands of daily practices and games.

The athletic department had an overall grade point average this past year of 3.02. In the spring of 2007, eight of the 17 teams posted semester and cumulative averages above 3.00. For the year, there were 100 student-athletes (51 percent) who had a cumulative GPA above 3.00 and 23 student-athletes (12 percent) with GPAs above 3.50.

The University has twice been recognized by the NCAA and *USA Today* for having the highest graduation rate in the nation as compared to the remainder of the student body.

Program Offerings

Undergraduate

Richard L. Connolly College of Liberal Arts and Sciences

- Art Education
- Bilingual Teaching for the Handicapped
- Biology
- Biochemistry
- Chemistry
- Cytotechnology
- Dance
- Economics
- English
- French
- German
- Humanities
- History
- Jazz Studies
- Journalism
- Mathematics
- Media Arts
- Medical Technology
- Music - Applied Music
- Music Theory
- Nuclear Medicine Technology
- Philosophy
- Physics
- Political Science
- Psychology
- Social Science
- Social Studies

- Social Work
- Sociology
- Spanish
- Speech
- Studio Art
- Visual Arts

School of Business, Public Admin. & Information Sciences

- Accounting
- Business Finance
- Business Management
- Computer Science
- Information Systems
- Marketing

School of Education

- Elementary
- Physical Education Teacher
- Bilingual Teacher of Special Education

School of Health Professions

- Health Sciences
- Occupational Therapy
- Physical Therapy
- Physician's Assistant
- Respiratory Care
- Sports Sciences

School of Nursing

- Nursing
- Nursing/Adult Nurse Practitioner

Graduate

Richard L. Connolly College of Liberal Arts and Sciences

- Anthropology
- Biology
- Chemistry
- Economics
- English
- Language Pathology
- Mathematics
- Media Arts
- Political Science
- Psychology
- Social Science
- Sociology
- Urban Studies

School of Business, Public Admin. & Information Sciences

- Accounting
- Business Administration
- Computer Science
- Health Administration
- Human Resources Management
- Public Administration
- Taxation

School of Education

- Bilingual Education
- Computers in Education
- Counseling

- Elementary
- English/Second Language
- Reading Teacher
- School Counselor
- School Psychologist
- Special Education

School of Health Professions

- Athletic Training/Sports Sciences
- Coaching & Conditioning
- Community Health
- Community Health Management
- Health Sciences
- Occupational Therapy
- Physical Therapy

School of Nursing

- Adult Nurse Practitioner
- Nurse Management

Arnold & Marie Schwartz College of Pharmacy and Health Sciences

- Drug Regulatory Affairs
- Drug Information & Communication
- Pharmaceuticals
- Pharmacy Administration

New York,



Symbolically, if not geographically, New York City is the very definition of a metropolis. The country's largest and most populous city boasts an array of amenities for both the common visitor and those who call the thrilling atmosphere home.



Long Island University is located in downtown Brooklyn, a thriving borough. The sights are endless. One might take a magical stroll through the Brooklyn Botanical Gardens, visit the Promenade, or walk across the storied Brooklyn Bridge—all just minutes from LIU. The campus rests just one subway stop away from Manhattan, where you can view the city's mystique atop the Empire State Building, shop in Soho and the West Village, eat in Little Italy, or take a horse-drawn carriage through Central Park. New York City provides an ambiance and an experience unparalleled to any other.



New York!



The 2007 Long Island University Blackbirds. Back Row (L to R): Head coach Tracey Bartholomew, volunteer assistant coach Allison Andreano, Caley Troutman, Neddie King, Tasia Davis, Christine Jones, Caitlin Meadows, Kelly O'Connell, Nicole Allen, Catic Blake, Kayleigh Morgan, Lara Martinez, graduate assistant coach Jackie McCormick, assistant coach Amphone Keovongmansar. Middle Row (L to R): Amy Rizzo, Felicia Reynolds, Kim Bishop, Samantha Post, Eleri Earnshaw, Jenae' Piper, Samantha Hoak, Kelly Carter, Amy Paige, Kesia Watley, Brittany Schandelmayer, Christina O'Connor. Front Row (L to R): Brittany Rigrup, Angela Schumacher, Felicia Amaral, Amy Johnson, Christine DeLashmutt.



2007 WOMEN'S SOCCER SCHEDULE

<i>Tues.</i>	Aug. 21	at Northeastern (scrimmage)	5:30 p.m.
<i>Sat.</i>	Aug. 25	at Hartford (scrimmage)	5:00 p.m.
<i>Fri.</i>	Aug. 31	at Rutgers	7:00 p.m.
<i>Sun.</i>	Sept. 2	NJIT	1:00 p.m.
<i>Fri.</i>	Sept. 7	at New Mexico #	7:00 p.m.
<i>Sun.</i>	Sept. 9	vs. Utah Valley State #	12:30 p.m.
<i>Fri.</i>	Sept. 14	LAFAYETTE	6:00 p.m.
<i>Sun.</i>	Sept. 16	COLUMBIA	3:00 p.m.
<i>Sat.</i>	Sept. 22	at Binghamton	6:00 p.m.
<i>Fri.</i>	Sept. 28	at American	2:00 p.m.
<i>Sun.</i>	Sept. 30	SIENA	1:00 p.m.
<i>Fri.</i>	Oct. 5	at Monmouth*	3:00 p.m.
<i>Sun.</i>	Oct. 7	at Mount St. Mary's*	1:00 p.m.
<i>Sat.</i>	Oct. 13	at Wagner*	1:00 p.m.
<i>Fri.</i>	Oct. 19	FAIRLEIGH DICKINSON*	6:00 p.m.
<i>Sun.</i>	Oct. 21	SACRED HEART*	1:00 p.m.
<i>Fri.</i>	Oct. 26	at Central Connecticut State*	3:00 p.m.
<i>Sun.</i>	Oct. 28	at Quinnipiac*	Noon
<i>Fri.</i>	Nov. 2	ROBERT MORRIS*	4:00 p.m.
<i>Sun.</i>	Nov. 4	SAINT FRANCIS (PA.)*	1:00 p.m.
<i>Fri., Sun.</i>	Nov. 9, 11	NEC Tournament (at No. 1 seed)	TBA

* Northeast Conference game

- New Mexico Nike Classic (Albuquerque, N.M.)

Home games in **BOLD CAPS**

All times Eastern

BROOKLYN CAMPUS

