



KANSAS

#KUsoccer

f /KANSASSOCCER

t /KUWSOCCER

o /KANSASSOCCER

OCT. 13, 2017 | KANSAS | GAME NOTES

SOCCER CONTACT: Brad Gilbert | bgilbert@ku.edu | 785.864.7788

JAYHAWKS

6-6-2 OVERALL

United Soccer rank: --

Head Coach: Mark Francis

1-2-1

RPI rank: 90

Record: 205-154-30 (19th yr.)



-VS-



11-0-2 OVERALL

United Soccer rank: 9

Head Coach: Angela Kelly

3-0-2

RPI rank: 9

Record: 58-39-15 (6th year)

LONGHORNS



GAME
15

#9 TEXAS at KANSAS

Lawrence, Kan.
Rock Chalk Park (2,500)
Friday, October 13, 2017 • 7 p.m.

KANSAS SOCCER TO HOST NO. 9 TEXAS FRIDAY AT ROCK CHALK PARK

For the third time this season, the Kansas soccer team will host a top-10 ranked opponent on its home turf when the Jayhawks welcome the ninth-ranked Texas Longhorns to Lawrence on Friday, Oct. 13. KU, which is trying to pick up its second win over a top-10 opponent this season, will look to hand the Longhorns (11-0-2) their first loss of the 2017 campaign. Kickoff from Rock Chalk Park is set for 7 p.m. and will be streamed on KUAthletics.com.

ABOUT THE JAYHAWKS

The Jayhawks enter the match with the Longhorns at 6-6-2 on the year, but with only one victory in their last seven outings. KU begins a stretch of playing three teams currently ranked in the top-25 over its final five regular-season matches, which includes a pair of contests against teams inside the top-10.

Kansas' offense has been up and down in its 14 outings of 2017, having scored multiple goals in seven of its contests, but also being shutout three times, two of those occasions coming in the Jayhawks' last four outings. KU has tallied 19 goals and is averaging 14 shots per outing. Junior Grace Hagan, a member of the MAC Hermann Trophy Watch List, leads the squad with five goals, while senior Lois Heuchan is tops on the team in assists with four. Twelve other Jayhawks have tallied at least one goal or an assist, with six of those having already amassed 13 or more shots.

The KU defense was stellar over its first seven outings of the season, conceding only five goals and posting an opponent scoreless streak of over 450 minutes in that time. However, over their last seven outings, the Jayhawks have allowed an average of nearly two goals per match. Overall, KU opponents are posting 13 shots per game with just over 39 percent of those ending up on target. Senior Maddie Dobyms has been Kansas' starting keeper in each match. She has collected 50 saves and amassed a save percentage of .758. The senior has also tallied four shutouts and has amassed a goals-against average of 1.13.

TOP-10 TEAMS BEWARE

The Jayhawks will take the pitch on Friday against its third top-10 opponent this season when No. 9 Texas heads to Lawrence. This match will mark the 13th time Kansas will host a top-10 opponent on its home turf. Following its win over No. 7 USC on Sept. 3, KU has now picked up three wins over top-10 squads in Lawrence since 2008. The Jayhawks topped No. 7 Oklahoma State, 2-1, in 2012 and also claimed a 1-0 victory over No. 6 Texas A&M during the 2008 season. That victory over the Aggies still stands as the highest-ranked opponent ever defeated by the Jayhawks.

2017 SCHEDULE

	#22 NEBRASKA Aug. 18 Lawrence, Kan. 7 p.m.	L, 0-3
	CENTRAL MICHIGAN Aug. 20 Lawrence, Kan. 1 p.m.	W, 3-0
	at Tulsa Aug. 25 Tulsa, Okla. 5:30 p.m.	W, 2-0
	at Oregon State Aug. 27 Corvallis, Ore. 1 p.m. (CT)	W, 2-0
	COLORADO COLLEGE Sept. 1 Lawrence, Kan. 7 p.m.	W, 2-0
	#7 SOUTHERN CALIFORNIA Sept. 3 Lawrence, Kan. 7 p.m.	W, 2-1
	at Saint Louis Sept. 8 St. Louis, Mo. 7 p.m.	T, 1-1 ^{20T}
	#10 TEXAS A&M Sept. 10 Lawrence, Kan. 1 p.m.	L, 1-5
	at #25 Utah Sept. 15 Salt Lake City, Utah 8 p.m.	L, 1-2
	at BYU Sept. 18 Provo, Utah 2 p.m. (CT)	L, 2-3
	at TCU Sept. 22 Fort Worth, Texas 6 p.m.	L, 0-1 ^{20T}
	at Texas Tech Sept. 24 Lubbock, Texas 1 p.m.	T, 1-1 ^{20T}
	at Iowa State Sept. 29 Ames, Iowa 7 p.m.	W, 2-1
	KANSAS STATE Oct. 6 Lawrence, Kan. 7 p.m.	L, 0-1
	TEXAS Oct. 13 Lawrence, Kan. 7 p.m.	
	BAYLOR Oct. 15 Lawrence, Kan. 1 p.m.	
	at Oklahoma Oct. 20 Norman, Okla. 7 p.m.	
	at Oklahoma State Oct. 22 Stillwater, Okla. 1 p.m.	
	WEST VIRGINIA Oct. 27 Lawrence, Kan. 7 p.m.	

TRACK THE MATCH

LIVE STATS

Fans can get up-to-the-minute statistics from the KU-UT match by visiting the Kansas live stats page. Go to the soccer schedule page at KUAthletics.com and click on the live stats link.

BROADCAST

Kansas will broadcast the KU-UT match live via KUAthletics.com. Go to the soccer page at KUAthletics.com for the link. Nick Springer (play-by-play) will call the action.

RADIO

Jayhawk Radio Network on KUAthletics.com. Nick Springer (play-by-play) will call the action. All KU games can be heard for free on the internet via TuneIn by going to KUAthletics.com/Radio.

PROJECTED STARTERS

FORMATION:
4-3-3



NUMERICAL ROSTER

NO.	NAME	POS.	HT.	YR.	HOMETOWN (PREVIOUS SCHOOL // CLUB TEAM)
0	Lauren Breshears	GK	5-8	Jr.	St. Peters, Mo. (Fort Zumwalt South HS // International Soccer Academy)
00	Maddie Dobyns	GK	6-0	Sr.	Kansas City, Mo. (Lee's Summit North HS // Harambre Viati)
1	Regan Gibbs	GK	5-9	So.	Naches, Wash. (West Valley HS // Crossfire Premier)
2	Lois Heuchan	F	5-8	Sr.	Castle Douglas, Scotland (Castle Douglas HS // Celtic FC)
3	Amari Hopkins	F	5-4	Fr.	Stafford, Va. (Mountain View HS // FC Virginia)
4	Kailey Lane	F	5-9	Fr.	Omaha, Neb. (Millard North HS // Elite Girls Academy)
5	Olivia Pesek	M/F	5-5	Fr.	Omaha, Neb. (Millard West HS // Elite Girls Academy)
6	Hannah Lukinac	D/M	5-6	Sr.	Olathe, Kan. (Olathe East HS // Sporting Blue Valley SC)
7	Avery Hall	D/M	5-5	Fr.	McKinney, Texas (McKinney Boyd HS // Solar Chelsea FC)
8	Anna Courtney	M	5-4	Jr.	Parkville, Mo. (Park Hill South HS // Kansas City SC)
9	Madison Meador	M	5-7	So.	Ballwin, Mo. (Marquette HS/Ole Miss // St. Louis Elite)
10	Miriam Melugin	M	5-8	Sr.	Springfield, Mo. (Kickapoo HS // Springfield FC)
11	Maia Williams	F	5-4	Jr.	Piscataway, N.J. (Piscataway HS/Monroe College // CNJ Wildcats)
12	Katie McClure	F	5-4	So.	Wichita, Kan. (Maize HS // Oklahoma FC)
13	Kathryn Castro	M	5-3	Fr.	Plano, Texas (Plano West Senior High // Solar Chelsea FC)
14	Alex Schweitzer	D	6-0	Jr.	Tampa, Fla. (Virginia Tech // Tampa Bay United)
15	Ceri Holland	D/M	5-5	Fr.	West Yorkshire, England (South Craven School // Manchester City)
17	Taylor Christie	D	5-6	So.	Overland Park, Kan. (Shawnee Mission South HS // Sporting Blue Valley)
19	Eva Elíasdóttir	D	5-9	So.	Thorlakhofn, Iceland (Fjöbrautaskóli Suðurlands // Selfoss)
20	Kayla Morrison	D	5-9	Sr.	Corona, Calif. (Corona HS // Legends FC)
21	Isabella Cavalcante	D	5-7	Fr.	Glen Ellyn, Ill. (Glenbard West HS // Sockers FC)
22	Mandi Duggan	F	5-2	So.	Aurora, Colo. (Grandview HS // Storm SC)
24	Elise Reina	D	5-2	So.	Fayetteville, Ark. (Har-Ber HS // Arkansas Comets)
25	Grace Hagan	F	5-10	Jr.	Wichita, Kan. (Kapaun Mt. Carmel Catholic HS // WFC United)
26	Addisyn Merrick	D	5-6	So.	Lee's Summit, Mo. (Lee's Summit North HS // Sporting Blue Valley)
27	Sophie Maierhofer	M	5-7	So.	Graz, Austria (University of Bremen // Werner Bremen)

STAFF

NAME	POSITION // YEAR AT KU	ALMA MATER // YEAR
Mark Francis	Head Coach // 19th	SMU // 1987
Kelly Miller	Assoc. Head Coach // 19th	Copper Union // 1996
Bri Young	Assistant Coach // 2nd	Texas A&M // 2011
Derek Shoare	Volunteer Asst. Coach // 3rd	St. Mary's (London) // 1980
Mark Taylor	Dir. of Operations // 2nd	Kansas // 2015
John Zirkelbach	Athletic Trainer // 15th	Iowa State // 1999
Ali Kershner	Strength and Cond. // 3rd	Duke // 2012

PRONUNCIATION GUIDE

Isabella CAVALCANTE	kav-uhl-KONT-ay
EVA ELIASDÓTTIR	AY-vuh ell-EYE-iss-daw-ter
Grace HAGAN	HAY-ghen
Lois HEUCHAN	HEW-kin
CERI Holland	CARE-ee
Hannah LUKINAC	Loo-KIN-ik
Madison MEADOR	MEH-der
Sophie MAIERHOFER	MY-er-HOF-er
Miriam MELUGIN	Mel-OO-jin
Olivia PESEK	PEH-sik
Alex SCHWEITZER	.SHWITE-zer
MAIA Williams	MY-uh

RADIO/TV ROSTER



0 LAUREN BRESHEARS
Jr. // GK // 5-8
St. Peters, Mo.



00 MADDIE DOBYNS
Sr. // GK // 6-0
Kansas City, Mo.



1 REGAN GIBBS
So. // GK // 5-9
Naches, Wash.



2 LOIS HEUCHAN
Sr. // F // 5-8
Castle Douglas, Scotland



3 AMARI HOPKINS
Fr. // F // 5-4
Stafford, Va.



4 KAILEY LANE
Fr. // F // 5-9
Omaha, Neb.



5 OLIVIA PESEK
Fr. // M/F // 5-5
Omaha, Neb.



6 HANNAH LUKINAC
Sr. // D/M // 5-6
Olathe, Kan.



7 AVERY HALL
Fr. // D/M // 5-5
McKinney, Texas



8 ANNA COURTNEY
Jr. // M // 5-4
Parkville, Mo.



9 MADISON MEADOR
So. // M // 5-7
Ballwin, Mo.



10 MIRIAM MELUGIN
Sr. // M // 5-8
Springfield, Mo.



11 MAIA WILLIAMS
Jr. // F // 5-4
Piscataway, N.J.



12 KATIE McCLURE
So. // F // 5-4
Wichita, Kan.



13 KATHRYN CASTRO
Fr. // M // 5-3
Plano, Texas



14 ALEX SCHWEITZER
Jr. // D // 6-0
Tampa, Fla.



15 CERI HOLLAND
Fr. // D/M // 5-5
West Yorkshire, England



17 TAYLOR CHRISTIE
So. // D // 5-6
Overland Park, Kan.



19 EVA ELÍASDÓTTIR
So. // D // 5-9
Thorlakhofn, Iceland



20 KAYLA MORRISON
Sr. // D // 5-9
Corona, Calif.



21 ISABELLA CAVALCANTE
Fr. // D // 5-7
Glen Ellyn, Ill.



22 MANDI DUGGAN
So. // F // 5-2
Aurora, Colo.



24 ELISE REINA
So. // D // 5-2
Fayetteville, Ark.



25 GRACE HAGAN
Jr. // F // 5-10
Wichita, Kan.



26 ADDISYN MERRICK
So. // D // 5-6
Lee's Summit, Mo.



27 SOPHIE MAIERHOFER
So. // M // 5-7
Graz, Austria



HC MARK FRANCIS
19th Season

TEXAS LONGHORNS

NO.	NAME	POS.	YR.	HT.	HOMETOWN (PREVIOUS SCHOOL)
0	Savannah Madden	GK	Fr.	5-7	San Diego, Calif. (Scripps Ranch)
2	Haley Berg	M/F	Fr.	5-6	Celina, Texas (Celina)
3	Emily Strouphauer	M/F	Fr.	5-7	Round Rock, Texas (Cedar Ridge)
4	Cydney Billups	F	R-Fr.	5-4	Greenwood Village, Colo. (Mountain Vista)
6	Mikayla Flores	F	R-So.	5-3	La Verne, Calif. (Bonita)
8	Alexa Adams	F	Jr.	5-8	Lancaster, Calif. (Quartz Hill)
9	Chelsea Surpris	D	Jr.	5-6	Crowley, Texas (Nolan Catholic)
10	Tecora Turner	F	So.	5-8	Memphis, Tenn. (St. Agnes Academy)
11	Nakia Graham	M/F	Jr.	5-4	Austin, Texas (Westwood)
12	Emily Martin	D	So.	5-9	Las Vegas, Nev. (Bishop Gorman)
13	Cyera Hintzen	F	So.	5-5	Garland, Texas (Sachse)
15	Peyton McGee	D	Fr.	5-8	Mansfield, Texas (Mansfield Legacy)
16	Kayra Dollas	M.	Jr.	5-10	Orange, Calif. (Lutheran of Orange County)
17	Amber Stearns	M.	Jr.	5-8	San Antonio, Texas (Johnson/Boston College)
18	Taylor Braun	GK	Sr.	5-6	Colleyville, Texas (Grapevine/University of Kentucky)
20	Atu Mshana	D	So.	5-4	Garland, Texas (Bishop Lynch)
22	Kyra Falcone	F	So.	5-8	San Antonio, Texas (Douglas MacArthur)
23	Nicole Curry	GK	So.	5-10	Dallas, Texas (Episcopal School of Dallas)
24	Emma Jett	D/M	So.	5-10	Coppell, Texas (Coppell)
25	Katie Glenn	M.	Jr.	5-3	Round Rock, Texas (Rouse)
27	Paige Hooper	D	Jr.	5-8	Beaumont, Texas (Monsignor Kelly Catholic)
29	Olivia Brook	F	Sr.	5-10	Houston, Texas (Memorial)
30	Morgan Murphy	M.	Sr.	5-8	Plano, Texas (Plano West)
31	Erin Moudy	D	Fr.	5-6	Dallas, Texas (Lake Highlands)
33	Maddie Dorsett	D	Fr.	5-6	Carrollton, Texas (Prestonwood Christian Academy)
42	Taylor Currie	D	Fr.	5-4	Raleigh, N.C. (Cardinal Gibbons)
55	Natalie Weidenbach	D	Fr.	5-4	North Bend, Wash. (Mount Si)
99	Bailey Dobbs	GK	Fr.	5-9	Katy, Texas (Seven Lakes)

Head Coach: Angela Kelly (Sixth Season)
Assistant Coach: Keeley Hagan (Sixth Season)
Assistant Coach: Keri Sanchez (First Season)

2017 QUICK FACTS

GENERAL INFORMATION

Location Lawrence, Kan.
 Enrollment 28,401
 Founded 1866
 Nickname Jayhawks
 School Colors Crimson and Blue (PMS: Blue 293; Crimson 186)
 Conference Big 12
 Chancellor Douglas A. Girod
 Athletics Director Dr. Sheahon Zenger
 Associate Athletics Director/Soccer Administrator Jane Fulton
 Athletics Website www.kuathletics.com
 Ticket Office Phone 1.800.34.HAWKS (42957)

SOCCER FACILITY

Home Facility (Capacity) Rock Chalk Park (2,500)
 KU Record at Rock Chalk Park 16-8-2 (.654)
 Opened 2014
 Surface Natural Grass (Bermuda and Rye)

COACHING STAFF/SUPPORT STAFF

Head Coach Mark Francis (SMU, 1987)
 Record at Kansas 205-154-30 (19th season)
 Overall 238-179-31 (22nd season)
 Associate Head Coach Kelly Miller (The Cooper Union, 1996)
 Year at Kansas 19th
 Assistant Coach Bri Young (Texas A&M, 2011)
 Year at Kansas Second
 Volunteer Assistant Derek Shoare
 Year at Kansas Third

2016 IN REVIEW

Overall Record 11-6-4 (.619)
 Big 12 Record 5-1-2 (.750)
 Big 12 Finish 2nd
 Home 6-2-1 (.722)
 Away 4-3-3 (.550)
 Neutral 1-1-0 (.500)

PROGRAM HISTORY

First Year of Soccer at Kansas 1995 (23rd season)
 All-Time Record 229-202-33 (.529)
 All-Time Big 12 Record 85-100-17 (.463)
 Conference Titles 1 (2004)
 NCAA Postseason Appearances 7
 (2001, 2003, 2004, 2008, 2011, 2014, 2016)
 NCAA Postseason Record 5-7-0 (.417)

2017 TEAM INFORMATION

Letterwinners Returning/Lost 17/8
 Starters Returning/Lost 6/5
 Newcomers 9

CARD ACCUMULATIONS

Player/Coach	Yellow	Red
Mark Francis (HC)	.1	.1
Hannah Lukinac	.1	.1
Katie McClure	.4	.0
Ceri Holland	.2	.0
Grace Hagan	.1	.0
Kayla Morrison	.1	.0
Elise Reina	.1	.0
Isabella Cavalcante	.1	.0

Yellow Accumulation Rule: Any player(s) or coach(es) who have received a total of five cautions in one season shall be suspended and shall not participate in the next regularly scheduled game, including postseason games.

ABOUT THE SERIES

RECORD

Texas leads, 15-6-2

OVERVIEW

The series between KU and UT has largely been dominated by the Longhorns, however the Jayhawks have come out on top in five of the last eight meetings, which included a win over UT last year in Austin. KU has not beat Texas in Lawrence since 2011.

COACHES

Kansas coach Mark Francis is in his 19th season at KU with a 205-154-30 record and is 238-179-31 in his 23rd season overall. Texas head coach Angela Kelly is in her sixth season at the helm of the Longhorns. Kelly has amassed a record of 58-39-15 during her time in Austin.

POLLS

Texas finds itself ranked among the top-10 in most of the most recent national polls, while Kansas is not ranked or receiving votes in any of the latest national polls.

ABOUT THE LONGHORNS

Located in Austin, Texas with an enrollment of 51,334, No. 9 Texas enters Friday's match as one of just three remaining unbeaten teams (with ties) in all of NCAA Division I women's collegiate soccer alongside No. 2 UCLA (11-0-2) and Wisconsin-Milwaukee (11-0-3).

The UT offense has been solid in 2017, scoring multiple goals in six of its contests and only being shutout once. Texas is posting 17.4 shots per game and is scoring on just over nine percent of those attempts. The Longhorns have also managed to put 42 percent of those 17.4 shots per game on target. Sophomore Cyera Hintzen leads the team with seven goals, four assists and 42 shots on the year, and is joined by nine of her teammates who have notched at least one goal or an assist in 2017.

The Texas defense has been stellar this year, having conceded just seven goals this season and shutting out eight of its opponents. Longhorn foes are averaging only nine shots per match and are putting 35 percent of those attempts on frame. Sophomore goalkeeper Nicole Curry has played each minute this season in goal for UT. In her 13 outings she has collected 33 saves and has amassed a goals-against average of 0.51

Angela Kelly is in her sixth season as the head coach of the Texas women's soccer program. In her first five-plus seasons with the Longhorns, Kelly has amassed a 58-39-15 record.

LAST TIME OUT

Some late heroics from Kansas State goalkeeper Miranda Larkin helped stave off a last stitch rally from the Jayhawks as KSU managed to fend off Kansas, 1-0, Friday night at Rock Chalk Park. The match marked the first edition of the Dillons Sunflower Showdown in soccer, with a record crowd of 2,514 in the

Dillons Sunflower Showdown in soccer, with a record crowd of 2,514 in the

stands, the highest-attended NCAA DI women's soccer match ever to be held in the state of Kansas.

With less than two minutes remaining in the match and the Jayhawks down 1-0 and scrambling to find the equalizing goal, KU put together some of their best attacks of the day, but could not solve KSU's senior keeper, Larkin. Senior Lois Heuchan connected on a point-blank attempt from just inside the six-yard box that Larkin somehow managed to deflect out of bounds. Seconds later, a header from Sophie Maierhofer flew just inches over the KSU cross bar. With just 10 second left before the final buzzer, Ceri Holland got on the end of a long cross into the box. Her header looked primed to tie up the match with seconds to spare, however Larkin was there for her ninth and final save of the match, tipping the attempt over the crossbar just before time expired.

UNITED SOCCER COACHES POLL

OCT. 10, 2017

Rank	Team (First Place Votes)	Previous	Record
1.	Stanford (16)	2.	12-1-0
2.	UCLA (12)	1.	11-0-2
3.	South Carolina (3)	3.	12-1-0
4.	Duke	4.	13-1-0
5.	North Carolina	5.	10-2-0
6.	<i>Southern California</i>	6.	<i>10-1-1</i>
7.	<i>West Virginia</i>	8.	<i>11-3-0</i>
8.	Central Florida	10.	9-1-1
9.	<i>Texas</i>	7.	<i>11-0-2</i>
10.	Florida	9.	10-3-0
11.	Princeton	11.	11-1-0
12.	Ohio State	17.	11-2-1
13.	Penn State	14.	9-3-1
14.	Virginia	13.	8-3-3
15.	Georgetown	12.	10-2-2
16.	Florida State	16.	9-3-0
17.	Pepperdine	18.	9-2-2
18.	California	20.	10-2-1
19.	Tennessee	21.	12-1-1
20.	<i>Texas A&M</i>	19.	<i>10-2-1</i>
21.	Cincinnati	22.	10-1-2
22.	Wake Forest	15.	9-3-2
23.	Minnesota	RV	9-2-3
24.	Rice	RV	9-2-1
25.	<i>Oklahoma State</i>	25.	<i>11-2-2</i>

Others receiving votes: Notre Dame (27), Wisconsin (24), Mississippi (22), Rutgers (12), Washington (7), Clemson (7), Arizona (6), Butler (5), Wisconsin-Milwaukee (4), North Carolina State (3), Mississippi State (1), *Saint Louis (1), North Texas (1)*

Kansas 2017 opponents are in italics

TOP DRAWER SOCCER POLL

OCT. 9, 2017

Rank	Team	Record	Conf.
1.	Stanford	12-1-0	5-0-0
2.	UCLA	11-0-2	4-0-1
3.	South Carolina	12-1-0	6-0-0
4.	Duke	13-1-0	6-0-0
5.	North Carolina	10-2-0	6-0-0
6.	<i>USC</i>	<i>10-1-1</i>	<i>4-0-1</i>
7.	<i>Texas</i>	<i>11-0-2</i>	<i>3-0-2</i>
8.	<i>West Virginia</i>	<i>11-3-0</i>	<i>4-1-0</i>
9.	UCF	9-1-1	5-0-1
10.	Georgetown	10-2-2	4-0-1
11.	Princeton	11-1-0	3-0-0
12.	Penn State	9-3-1	5-1-1
13.	Florida	11-2-0	5-1-0
14.	Florida State	9-3-0	4-2-0
15.	Ohio State	11-2-1	6-1-0
16.	Tennessee	12-1-1	4-1-1
17.	Virginia	8-3-3	3-1-2
18.	Cincinnati	10-1-2	3-0-1
19.	Wake Forest	9-3-2	3-2-1
20.	<i>Texas A&M</i>	<i>10-2-1</i>	<i>5-1-0</i>
21.	<i>Oklahoma State</i>	<i>11-2-2</i>	<i>5-1-0</i>
22.	Pepperdine	9-2-2	3-0-0
23.	California	10-2-1	3-1-1
24.	Rutgers	9-2-3	3-2-2
25.	Washington	9-3-2	2-1-2

Others receiving votes: Minnesota (9-2-3), Mississippi (10-3-1), Wisconsin (9-3-2), Notre Dame (7-4-3), Purdue (9-4-1)

Kansas 2017 opponents are in italics

MESSIN' WITH TEXAS

This weekend the KU soccer team will try to continue a recent trend of solid performances against schools from the state of Texas. Lone Star State foes Texas and Baylor will journey to Rock Chalk Park on Friday and Sunday, respectively. The Jayhawks have been pests to Texas schools over the last three-plus regular seasons. In its 19 games against schools from the state of Texas, KU has amassed a record of 12-5-2, a goal differential of +8 and a goals-against average of 0.91.

The record includes some positive results against this weekend's two opponents. The Jayhawks have claimed five victories in their last eight meetings with UT, this after KU posted only one win in its first 15 outings against the Longhorns. The Bears have also had a tough time against KU in recent years. Kansas has come out on top over Baylor in each of the last five meetings, which included a 1-0 double overtime win for the Jayhawks in BU's last trip to Lawrence in 2015.

In its first 20 years as a program, the state of Texas proved to be a tough place to play for a host of Jayhawk squads, that is until the 2014 season and forward. Prior to 2014, Kansas amassed an overall record of 11-30-8 in matches played inside the Lone Star State, resulting in a win percentage of just .306. Since the start of 2014 though, the Jayhawks turned that trend on its head, going 8-2-1 inside the Lone Star State. KU's loss to Texas Tech in Lubbock in 2015 and its loss to TCU two weeks ago are its only two blemishes in Texas over the last three years.

RPI REVIEW

With the release of the season's Ratings Percentage Index (RPI) report by the NCAA this week, Kansas extended an impressive streak that it has continued to build on over the last two seasons. For 31-straight weeks, dating back to 2014, the Jayhawks have been ranked inside the top-100 on the list that takes numerous factors into account, including strength of schedule, record against top-50 teams and home versus road records.

This week's report also shows that the Big 12 is among the nation's toughest conferences. The league boasts seven of its 10 teams inside the top-100. The conference's high ranking also means the Jayhawks will get plenty of chances to up their national standing as three of their next five contests will be against teams currently ranked inside the top-50 of the RPI.

A TALE OF TWO SEASONS

After a quick start to the 2017 campaign, the Jayhawks have hit a bit of a rough patch over the last month, and nothing demonstrates this fact better than comparing the team's first seven matches with its seven most recent. The team began the year with only one loss in its first seven outings, but the team that took the field the last seven times has only one win. The difference in squads over those two periods of the 2017 season is apparent by much more than just looking at wins and losses.

In its first seven matches, the Kansas defense was almost unbreakable, conceding only five goals and amassing an opponent scoreless streak of over 450 minutes. KU was allowing only 10 opponent shots per match and only 43 percent of those are ending on goal. Since then though, Kansas' defense has struggled. In their seven most recent games, the Jayhawks have allowed 15 goals, which included three matches with multiple shots finding the back of the net. KU opponents have also averaged 15.7 shots per game over the last seven contests, a nearly six-shot increase compared to the first half of the season.

The recent struggles may largely be attributed to a brutal stretch that the Jayhawks were forced to endure over the month of September. KU spent 14 of the month's 29 days on the road. The Jayhawks' opponents in September have been anything but a breeze either, with seven of KU's nine September foes boasting a combined record of 52-21-9.

KANSAS GAMES 1-7 VS. GAMES 8-14

Games 1-7	Record	Games 7-14
5-1-1	Record	1-5-1
1.71	Goals/GM	1.00
0.69	Goals-Against Avg.	1.89
+7	Goal Diff.	-7
13.0	Shots/GM	14.7
5.1	Corners/GM	6.1
.132	Shot %	.068
.516	Shot on Goal %	.437
10.1	Opp. Shot/GM	15.7
.437	Opp Shot on Goal %	.364
4	Shutouts	0

MEDIA INFORMATION

WEEKLY PRESS RELEASE

Each Wednesday a complete release previewing the upcoming weekend's games and reviewing the season will be available on KUathletics.com. The release will also be emailed to media requesting this service each Wednesday.

INTERVIEWS

Contact the communications office for all player or coach interview requests. All interviews with players and coaches will take place after practice on Mondays and Wednesdays. To request players media should contact Brad Gilbert, Assistant Communications Director, by noon each day preceding interviews at brgilbert@ku.edu or (785) 864-7788. Out-of-town media wishing to interview Kansas players should also contact the communications office with their requests by noon the day prior to the interview.

Home and cell phone numbers for players will not be provided and players have been instructed not to accept calls from media without prior notice from the communications office. Please do not contact a player or coach without scheduling the interview through the communications office.

COVERING HOME GAMES

CREDENTIALS

All credential requests can be made by contacting the communications office or soccer contact Brad Gilbert (brgilbert@ku.edu). Credentials will be available for pickup at the KU communications office or in the ticket office at Rock Chalk Park on gamedays. Credentials will only be granted to members of legitimate media entities.

GETTING TO ROCK CHALK PARK

From Kansas City (Kansas City International Airport), Take I-29 North to I-435 South toward Topeka. Merge onto I-70 West to Topeka. Use exit 197 (west exit) in Lawrence and drive south on KS-10 E to W 6th Street. Take a left (east) on 6th Street followed by another left (north) on George Williams Way. The Rock Chalk Park parking lot will then be on the left.

WIRELESS INTERNET

Complimentary access to wireless internet is available at Rock Chalk Park and information about how to access it will be available in the pressbox.

INJURY INFORMATION

The University of Kansas Athletics department will abide by HIPAA - a federal privacy act policy - with regard to the release of injury information.

THIS AND THAT

KANSAS hosted a record-breaking crowd on Oct. 6 in its game vs. Kansas State. A program and NCAA DI state of Kansas record 2,514 fans packed Rock Chalk Park. It also marked the highest-attended match hosted by a Big 12 team this year.

MANY Jayhawks have gotten their hands in on the offensive attack so far this season. Thirteen different Kansas players have tallied either a goal or an assist with four of those having posted 17 or more shots.

KAYLA Morrison has started each of Kansas' 77 games over the last three seasons. The senior has tallied more than 1,970 minutes in each of the last two seasons and currently sits at No. 5 on the program's career minutes chart. She has amassed 6,808 minutes in 77 career appearances for the Jayhawks.

NAVIGATING A TOP-TIER SCHEDULE

Before Kansas soccer even hit the pitch for its first match of the season, the Jayhawks knew they would be in for a gauntlet of a schedule. The 2017 schedule featured 10 teams that competed in the NCAA Tournament a year ago, which included both squads that played in the national final. In the preseason, many pundits dubbed Kansas' slate as one of the toughest in the nation, and that forecast has no doubt come true.

The Jayhawks, sitting at 6-6-2 after their first 14 games of the season, have played or will play six teams that are ranked or receiving votes in the most recent United Soccer Coaches' top-25 poll. That number includes three squads inside the top-nine.

The Jayhawks have already played four top-25 teams over the first half of the season, which included a match against the defending NCAA Champion, No. 7 USC, a 2-1 Kansas victory. It appears as though KU will face several more battles with top-25 teams this season with the bulk of Big 12 Conference play still to come. The conference currently features three teams that are ranked or receiving votes in the Coaches' poll and that includes No. 7 West Virginia, No. 9 Texas and No. 25 Oklahoma State. The Big 12's winning percentage, 60.4 percent, after the first eight weeks of the season ranks fifth out of the 31 DI conferences.

AMAZING GRACE

Junior forward Grace Hagan has already put the early touches on an impressive 2017 campaign. The MAC Hermann Trophy Watch List member leads the Jayhawks with five goals, three assists and 13 points, figures that also rank the Wichita product among the top-10 in the Big 12 in their respective categories.

Hagan is creeping closer to inserting her name among the top offensive players in Jayhawk history. Her 16 career goals currently rank her 11th on Kansas' all-time goal scorer chart and have her only one shy from inserting her name among the school's top-10. Hagan's 10 career assists also have her at No. 17 on KU's all-time assists list.

IRON JAYHAWK

Senior Kayla Morrison has continued an impressive streak into her final year in Lawrence as she has started all 77 of the Jayhawks' matches since her freshman year in 2014. Morrison's mark is already among the longest in program history as it's fifth on the all-time list among field players. If the Corona, California product is in the starting lineup in each of Kansas' final five regular-season games, she would move to a tie for third on that list with 82-straight starts. In fact, Morrison hasn't even been subbed out of a game in 2,781 minutes. Her last stint on the bench came in a 13-minute rest at the end of the first half of KU's 2-1 win over Valparaiso on Sept. 4, 2016. She has played every one of KU's minutes since.

Two field players hold the ultimate title of "Iron Jayhawk" as they started each of KU's matches over a four-year span. Estelle Johnson (2006-09) and Afton Sauer (2004-07) were in the starting 11 in all 83 games of their careers.

ROCK Chalk Park has been a tough venue for KU opponents over the last three-plus years. The Jayhawks are 22-11-2 in their last 35 outings on their home pitch. In that span, KU had a goal differential of +18 and boasted a goals-against average of 0.94.

KU checked in at No. 90 in the latest RPI rankings released by the NCAA Monday. The ranking marks the 31st-consecutive RPI list that features Kansas among the top-100. The Big 12 currently has seven of its 10 teams in the top-90 of this week's RPI.

RED cards have been a rarity for the Kansas program in recent years, with referees showing Jayhawks red just twice over 63 games in three seasons from 2014-16. But KU has been issued red twice already in 13 games this season. Mark Francis was red carded in the match versus BYU (9/18) and Hannah Lukinac was sent off against TCU (9/22).

KANSAS IN THE BIG 12/NCAA

Big 12 Top-10 (10.8.17); NCAA Top-100 (10.8.17)



TEAM

W-L-T Percentage (.500, 6-6-2)	.17	-
Points Per Game (3.9)	.6	-
Goals Per Game (1.36)	.16	-
Assists Per Game (1.14)	.6	-
Shots Per Game (13.9)	.7	-
Shots on Goal Per Game (6.6)	.6	-
Corners Per Game (5.6)	.7	50
Offsides Per Game (1.9)	.15	-
Fouls Per Game (9.6)	.6	-
Goals-Against Avg. (1.3)	.8	-
Saves Per Game (3.7)	.5	-
Save Percentage (.732)	.10	-
Shutouts (4)	.9	-

INDIVIDUAL (ALL GAMES)

TOTAL POINTS

Grace Hagan (13)	.t4	-
------------------	-----	---

TOTAL GOALS

Grace Hagan (5)	.t4	-
-----------------	-----	---

TOTAL ASSISTS

Lois Heuchan (4)	.t6	-
------------------	-----	---

TOTAL SAVES

Maddie Dobyms (50)	.3	-
--------------------	----	---

SHUTOUTS

Maddie Dobyms (4)	.t7	t93
-------------------	-----	-----

GOALS AGAINST AVERAGE

Maddie Dobyms (1.13)	.8	-
----------------------	----	---

GOALKEEPER MINUTES PLAYED

Maddie Dobyms (1,180)	.2	25
-----------------------	----	----

KANSAS CAREER GOAL SCORING LEADERS

Rnk	Name (Yrs.)	Goals
1.	Caroline Smith (2002-05)	51
2.	Liana Salazar (2011-15)	28
3.	Caroline Kastor (2010-13)	26
	Rachel Gilfillan (2001-04)	26
5.	Whitney Berry (2009-12)	23
	Emily Cressy (2007-10)	23
	Monica Dolinsky (2006-09)	23
8.	Ashley Williams (2012-15)	21
9.	Monica Brothers (2001-04)	19
10.	Natalie Hoogveld (1999-01)	17
11.	Grace Hagan (2015-Present)	16

KU's women's intercollegiate athletics program began with six sports: women's basketball, softball, volleyball, swimming, gymnastics and field hockey. When Marlene Mawson was tasked with starting the program, an annual budget of \$2,000 was provided and expected to cover all expenses for equipment, uniforms and travel. In addition to administering the program, Mawson also coached volleyball (1968-70), basketball (1968-71), softball (1968-70), tennis (1971) and field hockey (1969-71).

The University offered its first athletic scholarships to women in 1975, and the athletic departments remained separate until 1979.

KANSAS ATHLETICS CELEBRATING 50 YEARS OF WOMEN'S SPORTS

The 2017 Jayhawk soccer players are currently carving their legacies in Kansas athletics history, but with the 2017-18 academic year set to begin it is a great reminder of those who pioneered and paved the way for future female student-athletes to don the Crimson and Blue.

The opportunity for women to compete for the University of Kansas was solidified in 1968. This school year, then, marks the 50th season of intercollegiate women's athletics at KU, and the Department of Athletics will take the year to celebrate this milestone.

Starting with Friday's season-opening match against Nebraska, the Jayhawks, during their pregame warmup, will sport a commemorative T-shirt to honor the 50-year evolution of women's sports in the athletics department. These commemorative T-shirts will be worn throughout the year by all female Jayhawk student-athletes prior to each competition.

In addition, several events are being scheduled and planned. Highlighted by sport reunions, recognitions and other special events, the celebration of the 50th year of women's sports at Kansas will be a year-long initiative for the department.



GAMES STARTED STREAKS

Player	Current	Career Long
Kayla Morrison	77	77
Katie McClure	30	30
Addisyn Merrick	22	22
Maddie Dobyms	14	29
Isabella Cavalcante	14	14
Eva Eliasdottir	14	14
Ceri Holland	14	14
Grace Hagan	13	32
Lois Heuchan	3	16
Kathryn Castro	3	3
Sophie Maierhofer	2	8
Taylor Christie	0	1
Hannah Lukinac	0	11
Mandi Duggan	0	4
Madison Meador	0	2
Regan Gibbs	0	2
Anna Courtney	0	2
Amari Hopkins	0	1
Miriam Melugin	0	1
Elise Reina	0	1

SOCCER AMERICA POLL
OCT. 10, 2017

Rank	Team	Record	Last Wk
1.	Stanford	12-1-0	2
2.	UCLA	11-0-2	1
3.	North Carolina	10-2-0	3
4.	Duke	13-1-0	4
5.	South Carolina	12-1-0	5
6.	Florida	11-2-0	9
7.	Texas	11-0-2	7
8.	Georgetown	10-2-2	8
9.	Florida State	9-3-0	6
10.	Penn State	9-3-1	10
11.	West Virginia	11-3-0	11
12.	USC	10-1-1	13
13.	Virginia	8-3-3	12
14.	Princeton	11-1-0	14
15.	Ohio State	11-2-1	15
16.	Texas A&M	10-2-1	17
17.	UCF	9-1-1	18
18.	Wake Forest	9-3-2	16
19.	Tennessee	12-1-1	20
20.	Cincinnati	10-1-2	22
21.	California	10-2-1	23
22.	Minnesota	9-2-3	24
23.	Oklahoma State	11-2-2	21
24.	Butler	10-1-3	19
25.	Pepperdine	9-2-2	NR

Kansas 2017 opponents are in italics

RPI TOP-25

Rank	Team	Record
1.	South Carolina	12-1-0
2.	Stanford	12-1-0
3.	North Carolina	10-2-0
4.	Duke	13-1-0
5.	West Virginia	11-3-0
6.	Princeton	11-1-0
7.	UCF	9-1-1
8.	Tennessee	12-1-1
9.	Texas	11-0-2
10.	UCLA	11-0-2
11.	Notre Dame	7-4-3
12.	Florida St.	9-3-0
13.	Florida	11-2-0
14.	Penn St.	9-3-1
15.	Pepperdine	9-2-2
16.	Ohio St.	11-2-1
17.	Texas A&M	10-2-1
18.	Ole Miss	10-3-1
19.	Cincinnati	10-1-2
20.	Rutgers	9-2-3
21.	Alabama	8-5-1
22.	California	10-2-1
23.	Wisconsin	9-3-2
24.	Wake Forest	9-3-2
25.	Virginia	9-3-2

RPI WATCH

RECORD VS.

RPI 1-25	0-1-0
RPI 26-50	0-0-0
RPI 51-100	1-4-2
RPI 101-150	0-0-0
RPI 150+	5-1-0

GOAL DIFFERENTIAL VS.

RPI 1-25	-4
RPI 26-50	0
RPI 51-100	-5
RPI 101-150	0
RPI 150+	+9

BEST RESULTS

at #53 Saint Louis	T, 1-1
vs. #56 USC	W, 2-1
at #68 Texas Tech	T, 1-1

WORST RESULTS

vs. #190 Kansas State	L, 0-1
at #90 BYU	L, 2-3
vs. #67 Nebraska	L, 0-3
at #62 TCU	L, 0-1

UPCOMING OPPONENTS

RPI	Team	Conference
9	vs. Texas	.Big 12
60	vs. Baylor	.Big 12
177	at Oklahoma	.Big 12
43	at Oklahoma State	.Big 12

KANSAS RANK
90

KANSAS Strength of Schedule
69

BIG 12 RPI
5

HERO SPORTS POLL
OCT. 9, 2017

Rank	Team	Record	Last Wk
1.	Stanford	12-1-0	1
2.	North Carolina	10-2-0	2
3.	UCF	9-1-1	3
4.	Duke	13-1-0	5
5.	UCLA	11-0-2	4
6.	South Carolina	12-1-0	6
7.	Penn State	9-3-1	7
8.	Notre Dame	7-4-3	10
9.	Princeton	11-1-0	8
10.	Pepperdine	9-2-2	9
11.	Ohio State	11-2-1	13
12.	Florida	11-2-0	14
13.	Florida State	9-3-0	11
14.	Texas A&M	10-2-1	12
15.	Minnesota	9-2-3	17
16.	West Virginia	11-3-0	NR
17.	USC	10-1-1	15
18.	Rutgers	9-2-3	18
19.	California	10-2-1	20
20.	Wake Forest	9-3-2	16
21.	Tennessee	12-1-1	19
22.	Georgetown	10-2-2	NR
23.	Virginia	8-3-3	23
24.	Arizona	5-4-3	24
25.	Mississippi	10-3-1	NR

Kansas 2017 opponents are in italics

FIRST TO SCORE, WINS GALORE

Over its past 117 games, dating back to the beginning of the 2012 season, Kansas developed an interesting trend when it comes to which team tallies the first goal of the match. During that 117-game span, the Jayhawks were on the losing end only twice in contests which they put in the match's first goal. Kansas has amassed a record of 55-2-6 in those games, which included a 10-0-2 mark last season and already a 5-1-1 mark this year. The Jayhawks' loss at BYU on Sept. 18 was their first in 51 matches when they scored first.

On the flip side, KU wasn't quite as fortunate when its opponents have gotten on the board first. Kansas' win over Iowa State on Sept. 29 marked just the fourth victory for the Jayhawks in that same 117-game span when finding itself trailing 1-0 at any point in a match. Kansas is now 4-43-4 in those games over the last four seasons, which included all six of the Jayhawks' losses and two of their draws in 2016 as well as five of their losses and a tie this season.

FRANCIS CLAIMS WIN NO. 200 AT KANSAS

With Kansas' 3-0 win over Central Michigan on Aug. 20, Mark Francis claimed his 200th victory as the head coach of Kansas. He has now amassed a record of 201-148-28 over his 19-year stint in Lawrence. The veteran coach has averaged just over 11 wins per season during that span. He is currently second among the active Big 12 coaches in victories behind West Virginia's Nikki Izzo-Brown.

BIG CLEATS TO FILL

The 2017 Jayhawks are trying to fill the void left by a large group of players lost to graduation following last season. KU will have to navigate through the departure of seven players who were a part of 53 KU victories since 2012. They helped their team to a pair of top-three Big 12 finishes, its fifth-straight Big 12 tournament berth and two NCAA Tournament appearances. Combined, these seven accumulated 355 starts and played over 33,000 minutes in the Crimson and Blue. This senior class also combined for 11 goals, 23 assists and 311 shots. From 2013-16, this Jayhawk senior class amassed a record of 43-32-8. This makes it the seventh class in program history to have achieved 43 or more wins in a four-year period.

UP NEXT

Kansas will return to Rock Chalk Park on Sunday, Oct. 15 when the Jayhawks play host to the Baylor Bears. KU will look to claim their six-straight win over BU when they kickoff at 1 p.m. The match will be broadcast live on Spectrum Sports KC and ESPN3.

LONGEST STREAKS OF CONSECUTIVE MATCHES STARTED (FIELD PLAYERS)

Rnk	Name (Yrs.)	Games
1.	Estelle Johnson (2006-09)	83
	Afton Sauer (2004-07)	83
3.	Whitney Berry (2009-12)	82
	Shelby Williamson (2009-12)	82
5.	Kayla Morrison (2014-Present)	77
6.	Jackie Dowell (1995-98)	62
7.	Jaime Fletcher (2011-14)	61
	Jessica Bush (2005-08)	61
9.	Liana Salazar (2011-15)	60
10.	Missy Geha (2001-04)	59

AROUND THE BIG 12

	BIG 12						OVERALL					
	Record	%	Home	Away	Strk	Pts	Record	%	Home	Away	Neut	Stk
Oklahoma State	4-1	.800	2-0	2-1	W1	12	11-2-2	.800	7-0	4-2-2	0-0	W1
West Virginia	4-1	.800	2-0	2-1	W3	12	11-3	.786	6-2	4-1	1-0	W3
Texas	3-0-2	.800	3-0-1	0-0-1	-	11	11-0-2	.923	9-0-1	2-0-1	0-0	-
TCU	3-1-1	.700	2-1	1-0-1	-	10	9-4-1	.679	6-2	3-2-1	0-0	-
Baylor	2-2-1	.500	2-1	0-1-1	W1	7	8-3-2	.692	6-1	2-1-2	0-1	W1
KANSAS	1-2-1	.375	0-1	1-1-1	L1	4	6-6-2	.500	3-3	3-3-2	0-0	L1
Texas Tech	1-3-1	.300	1-1-1	0-2	L3	4	8-5-1	.607	4-1-1	1-4	3-0	L3
Oklahoma	0-2-3	.300	0-0-2	0-2-1	L1	3	2-9-4	.267	2-2-2	0-6-2	0-1	L1
Kansas State	1-3	.250	0-1	1-2	W1	3	6-6-1	.500	3-2	3-4-1	0-0	W1
Iowa State	0-4-1	.100	0-2-1	0-2	L1	1	2-10-2	.214	2-3-1	0-6-1	0-1	L1

CONFERENCE NEWS & NOTES

- The Big 12 earns the most corner kicks per game with seventy percent of teams ranking among the top-50 in the nation, led by Texas with 8.46 (No. 2) and TCU with 7.86 (No. 5).
- Through three weeks of conference play, over 50 percent of games have needed extra minutes to decide the outcome (12 of 21, .571).
- Kansas State earned its first Big 12 program victory last week during the inaugural Sunflower Showdown, winning 1-0 at Kansas.
- The league's nine overtime matches during the first three weeks of Big 12 play is the most in over twelve years.
- Seventy percent of Big 12 teams rank within the top-90 in the NCAA RPI poll, including two in the top 10 which ties for the most in the nation: 6. West Virginia, 9. Texas, 43. Oklahoma State, 57. TCU, 61. Baylor, 74. Texas Tech, 90. Kansas
- Texas is one of three teams in the nation to remain unbeaten and owns the best win-percentage in the nation (.923).

PRESEASON ALL-BIG 12 TEAM

Pos.	Name	School	Year	Hometown
GK	Rylee Foster	WVU	So.	Cambridge, Ontario
D	Paige Welch	OU	Jr.	Austin, Texas
D	Amandine Pierre-Louis	WVU	Sr.	Montreal, Quebec
D	Bianca St. Georges	WVU	Jr.	St. Felix de Valois, Quebec
MF	Julie James	BU	Jr.	Fairview, Texas
MF	Jordie Harr	TTU	So.	Sachse, Texas
MF	Carla Portillo	WVU	Sr.	Mississauga, Ontario
F	Emma Heckendorn	TCU	Sr.	Flower Mound, Texas
F	Cyera Hintzen	UT	So.	Garland, Texas
F	Michaela Abam**	WVU	Sr.	Houston, Texas
F	Sh'Nia Gordon	WVU	Jr.	Ocklawaha, Fla.

** Unanimous selection

LEAGUE LEADERS

INDIVIDUAL

Shots	Michaela Abam, WVU	.81
Points	Cyera Hintzen, UT	.18
Goals	Cyera Hintzen, UT	.7
Assists	Anna Beffer, OSU	.9
GW Goals	Cyera Hintzen, UT	.5
GAA	Jennifer Wandt, TCU	.048
Saves	McKinley Crone, OU	.81
Shutouts	Nicole Curry, UT	.8
	Rylee Foster, WVU	.8
Save Pct.	Jennifer Wandt, BU	.857

TEAM

Shots	West Virginia	.291 (20.8 avg/Gm)
Goals	Oklahoma State	.35 (2.3 avg/Gm)
Assists	Oklahoma State	.29 (1.9 avg/Gm)
Goals Allowed	Baylor	.6 (0.5 avg/Gm)
Saves	Kansas State	.65 (5.4 avg/Gm)
Fouls	Oklahoma State	.191 (12.7 avg/Gm)
Corners	TCU	.110 (7.8 avg/Gm)
	Texas	.110 (8.5 avg/Gm)
Offsides	Texas	.45 (3.5 avg/Gm)
Shutouts	Texas	.8
	Baylor	.8
	West Virginia	.8

THIS WEEKEND'S BIG 12 SCHEDULE

FRIDAY, OCT. 13

Iowa State at West Virginia, 6 p.m.
 Oklahoma State at Texas Tech, 6 p.m.
 Oklahoma at TCU, 7 p.m.
 Baylor at Kansas State, 7 p.m.
 Texas at Kansas, 7 p.m.

SUNDAY, OCT. 15

Baylor at Kansas, 1 p.m.
 Texas at Kansas State, 1 p.m.

LAST WEEK'S BIG 12 RESULTS

FRIDAY, OCT. 6

Oklahoma State 0, West Virginia 1
 TCU 1, Texas 1 (20T)
 Oklahoma 0 Iowa State 0 (20T)
 Kansas State 1, Kansas 0
 Texas Tech 0, Baylor 3

SUNDAY, OCT. 8

Oklahoma State 2, Iowa State 1
 Oklahoma 1, West Virginia 5

THIS WEEKEND'S TOP-10 SCHEDULE (TOP DRAWER SOCCER RANKINGS)

THURSDAY, OCT. 12

Utah at No. 2 UCLA, 10 p.m.

FRIDAY, OCT. 13

No. 25 Washington at No. 1 Stanford, 9 p.m.
 Colorado at No. 6 USC, 6 p.m.
 No. 7 Texas at Kansas, 7 p.m.
 Iowa State at No. 8 West Virginia, 6 p.m.

SATURDAY, OCT. 14

No. 5 North Carolina at Boston College, 6 p.m.

SUNDAY, OCT. 8

Vanderbilt at No. 3 South Carolina, 12 p.m.
 Miami at No. 4 Duke, 11 a.m.
 No. 7 Texas at Kansas State, 1 p.m.
 No. 9 UCF at LSU, 1 p.m.
 No. 10 Georgetown at Providence, 12 p.m.

PRESEASON BIG 12 COACHES' POLL

Rk	School	Points
1.	West Virginia (8)**	.81
2.	KANSAS (1)	.71
3.	Oklahoma	.57
4.	Texas Tech	.55
5.	Baylor	.47
6.	Oklahoma State	.38
7.	TCU	.37
8.	Texas	.32
9.	Iowa State	.23
10.	Kansas State	.9

PLAYER OF THE WEEK AWARDS

Week 1 (Aug. 22)

Offensive . . . McKenzie Oliver (TCU)
 Defensive . . . Rylee Foster (WVU)
 Freshman . . . Natalee Heiser (TCU)

Week 2 (Aug. 29)

Offensive . . . Charme Morgan (OSU)
Defensive . . . Maddie Dobyans (KU)
 Freshman . . . Kim Rodriguez (OSU)

Week 3 (Sept. 5)

Offensive . . . Allison Ganter (TCU)
 Defensive . . . Easter Mayi Kith (WVU)
 Freshman . . . Taylor Olson (OSU)

Week 4 (Sept. 12)

Offensive . . . Katie Glen (UT)
 Defensive . . . None
 Freshman . . . Brookelynn Entz (KSU)

Week 5 (Sept. 19)

Offensive . . . Vanessa Flores (WVU)
 Defensive . . . Cyera Hintzen (UT)
 Freshman . . . Hannah Davis (KSU)

Week 6 (Sept. 26)

Offensive . . . Cyera Hintzen (UT)
 Defensive . . . Nicole Curry (UT)
 Freshman . . . Haley Berg (UT)

Week 7 (Oct. 3)

Offensive . . . Cyera Hintzen (UT)
 Defensive . . . McKinley Crone (WVU)
 Freshman . . . Haley Berg (UT)

Week 8 (Oct. 10)

Offensive . . . Michaela Abam (WVU)
 Defensive . . . Miranda Larkin (KSU)
 Freshman . . . Hannah Davis (KSU)

Week 9 (Oct. 17)

Offensive
 Defensive
 Freshman

Week 10 (Oct. 24)

Offensive
 Defensive
 Freshman

Week 11 (Oct. 30)

Offensive
 Defensive
 Freshman



0

LAUREN BRESHEARS JR • Goalkeeper • 5-8 • St. Peters, Mo. • Fort Zumwalt South HS

GP-GS	Min	GA	GAAvg	Sv	Sv%	W	L	T	Sho	
2015	3-0	83:23	2	2.16	1	.333	0	1	0	0
2016	0-0	0:00	0	0.00	0	.000	0	0	0	0
2017	0-0	0:00	0	0.00	0	.000	0	0	0	0
	3-0	83:23	2	2.16	1	.333	0	1	0	0

Minutes	42 vs. Oregon State (9/6/15)
Saves	1 vs. Oregon State (9/6/15)
Goals Allowed	1, 2x, last vs. West Virginia (10/16/15)
Shots Faced	6 vs. Oregon State (9/9/15)

Will likely be forced to sit out the entire 2017 season with a foot injury ... Did not log any minutes in 2016 ... Spent her time in 2015 season as the Jayhawks' No. 2 keeper ... Saw over 83 minutes in goal over three appearances for the Jayhawks in her first season of eligibility in 2015.



00

MADDIE DOBYMS SR • Goalkeeper • 6-0 • Kansas City, Mo. • Lee's Summit North HS

GP	Min	GA	GAAvg	Sv	Sv%	W	L	T	Sho	
2014	2-2	180:00	3	1.50	6	.667	1	1	0	0
2015	21-21	1893:34	23	1.09	77	.770	10	8	2	6
2016	17-17	1553:47	14	0.81	51	.785	10	3	3	4
2017	14-14	1270:16	16	1.13	50	.758	6	6	2	4
	54-54	4897:37	56	1.03	184	.767	27	19	7	14

Minutes	110, 8x, last at Texas Tech (9/24/17)
Saves	8, 2x, last at BYU (9/18/17)
Goals Allowed	5 at West Virginia (10/16/15)
Shots Faced	24 at BYU (9/18/17)

Starting GK for each of KU's first 14 games ... Named the Big 12's Defensive Player of the Week on Aug. 29 ... Ranks among the top-three of the school's career shutouts list ... Amassed a goals-against average of 0.81 in 2016, the fourth-lowest single-season GAA in program history.



1

REGAN GIBBS SO • Goalkeeper • 5-9 • Naches, Wash. • West Valley HS

GP-GS	Min	GA	GAAvg	Sv	Sv%	W	L	T	Sho	
2016	6-4	446:28	5	1.01	19	.792	1	2	1	1
2017	1-0	45:00	3	6.00	1	.250	0	0	0	0
	7-4	491:28	8	1.47	20	.714	1	2	1	1

Minutes	90, 4x, last vs. North Carolina (11/18/16)
Saves	6 vs. Pepperdine (9/18/16)
Goals Allowed	3 vs. Texas A&M (9/10/17)
Shots Faced	21 vs. USC (9/16/16)

Logged first minutes of 2017 in 45-minute outing vs. Texas A&M (9/10) ... Entered 2017 as the No. 2 keeper ... Saw action in six matches as a redshirt freshman last year, which included starts in four of those contests ... The Jayhawks' starting keeper in their two NCAA Tournament matches, allowing two goals, facing 32 shots and making eight saves in over 190 minutes.



2

LOIS HEUCHAN (HEW-kin) SR • Forward • 5-8 • Castle Douglas, Scotland • Castle Douglas HS

GP-GS	Min	G	A	Pts	Shot	Sh%	SOG	SOG%	GW	PK-Att	
2014	15-6	539	3	0	6	.15	200	6	.400	2	0-0
2015	16-3	559	0	3	3	.13	.000	3	.231	0	0-0
2016	21-19	1278	3	0	6	.39	.077	11	.282	2	0-0
2017	14-13	1039	1	4	6	.30	.033	14	.467	1	0-0
	66-41	3415	7	7	21	.072	34	.351	5	0-0	

Minutes	90 vs. Kansas State (10/17)
Goals	2 at TCU (9/30/16)
Assists	2, 2x, last at BYU (9/18/17)
Shots	5 vs. Missouri (11/13/16)
Shots on Goal	3, 2x, last at Tulsa (8/25/17)

Starting forward in 13 of KU's 14 matches, averaging 74.2 min/game ... Posted second-career two-assist outing vs. BYU (9/18) ... Netted first goal of 2017 and eventual game-winner vs. Colorado College (9/1) ... Tallied 39 shots last season, more than doubling her shot output from her previous two seasons combined.



3

AMARI HOPKINS FR • Forward • 5-4 • Stafford, Va. • Mountain View HS

GP-GS	Min	G	A	Pts	Shot	Sh%	SOG	SOG%	GW	PK-Att	
2017	14-1	402	0	1	1	6	.000	3	.500	0	0-0
	14-1	402	0	1	1	6	.000	3	.500	0	0-0

Minutes	49 at Texas Tech (9/24/17)
Goals	---
Assists	1 vs. Texas Tech (9/24/17)
Shots	2 vs. Central Michigan (8/20/17)
Shots on Goal	2 vs. Central Michigan (8/20/17)

Has seen minutes in each of KU's matches in 2017, averaging 28.7 min/gm ... Notched first-career assist on Sophie Maierhofer's goal vs. Texas Tech (9/24) ... Led her HS team with 10 goals and recorded 12 assists as a sophomore in 2014 ... A five-year member of FC Virginia, won the U15 NPL National Final, Region 1 Championship and Virginia State Cup, all in 2015.



4

KAILEY LANE FR • Forward • 5-9 • Omaha, Neb. • Millard North HS

GP-GS	Min	G	A	Pts	Shot	Sh%	SOG	SOG%	GW	PK-Att	
2017	0-0	0	0	0	0	0	.000	0	.000	0	0-0
	0-0	0	0	0	0	0	.000	0	.000	0	0-0

Minutes	---
Goals	---
Assists	---
Shots	---
Shots on Goal	---

Helped Millard North to four-straight district titles (2014-17) as well as three state runner-up finishes in 2014, 2016 and 2017 ... Was named to the Nebraska All-State Second Team as well as the All-Metro Second Team following her sophomore season in 2015 ... Spent six years with the Elite Girls Academy club team, which claimed the Nebraska State Championship four times between 2012-17.



5

OLIVIA PESEK (PEH-sik) FR • Midfielder/Forward • 5-5 • Omaha, Neb. • Millard West HS

GP-GS	Min	G	A	Pts	Shot	Sh%	SOG	SOG%	GW	PK-Att	
2017	3-0	24	0	0	0	0	.000	0	.000	0	0-0
	3-0	24	0	0	0	0	.000	0	.000	0	0-0

Minutes	16 at Texas Tech (9/24/17)
Goals	---
Assists	---
Shots	---
Shots on Goal	---

Returned from injury and saw first time as a Jayhawk in four-minute outing vs. TCU (9/22) ... Four-time letterwinner at Millard West HS, where she scored 15 goals and added 10 assists over the last three seasons ... Helped the Wildcats to three-straight conference and district titles in 2015, 2016 and 2017 and added a Nebraska Class A state championship in 2015.



6

HANNAH LUKINAC (loo-KIN-ik) SR • Defender/Midfielder • 5-6 • Olathe, Kan. • Olathe East HS

GP-GS	Min	G	A	Pts	Shot	Sh%	SOG	SOG%	GW	PK-Att	
2014	8-0	97	1	0	2	1	1.000	1	1.000	0	0-0
2015	8-0	113	0	0	0	1	.000	0	.000	0	0-0
2016	12-2	309	0	1	1	5	.000	0	.000	0	0-0
2017	13-11	732	1	0	2	5	.200	1	.200	1	0-0
	41-13	1251	2	1	5	12	.167	2	.167	1	0-0

Minutes	102 at Saint Louis (9/8/17)
Goals	1, 2x, last at Oregon State (8/27/17)
Assists	1 vs. South Dakota St. (8/28/16)
Shots	3 at Pepperdine (9/18/16)
Shots on Goal	1 vs. Saint Mary's (9/21/14)

A starter in 11 of KU's 13 contests this year after starting two matches in the previous three seasons combined ... Averaging 56.3 min/gm in the KU midfield in 2017 ... Netted game-winner in KU's victory over Oregon State (8/27), the second goal of her career ... A versatile player who is likely to see major minutes this season after being a reserve in her first three seasons.



7

AVERY HALL FR • Defender/Midfielder • 5-5 • McKinney, Texas • McKinney Boyd HS

GP-GS	Min	G	A	Pts	Shot	Sh%	SOG	SOG%	GW	PK-Att	
2017	1-0	13	0	0	0	0	.000	0	.000	0	0-0
	1-0	13	0	0	0	0	.000	0	.000	0	0-0

Minutes	13 vs. Central Michigan (8/20/17)
Goals	---
Assists	---
Shots	---
Shots on Goal	---

A four-time all-district first-team selection for the Broncos at McKinney as well as the team's defensive MVP following 2015-16 ... Named 6-6A Defender of the Year following her senior season in 2017 ... Spent four years with Solar Chelsea, where she was the team captain for the last three years ... In 2013-14, helped Chelsea to the ECNL Texas Conference State title.



8 ANNA COURTNEY JR • Midfielder • 5-4 • Parkville, Mo. • Park Hill South HS

GP-GS	Min	G	A	Pts	Shot	Sh%	SOG	SOG%	GW	PK-Att	
2015	21-1	597	2	0	4	5	.400	2	.400	1	0-0
2016	20-3	613	0	0	0	10	.000	3	.300	0	0-0
2017	0-0	0	0	0	0	0	.000	0	.000	0	0-0
41-4	1210	2	0	4	15	.154	5	.333	1	0-0	

Minutes	73 at USC (9/16/16)
Goals	1, 2x, last at Arkansas (9/17/15)
Assists	---
Shots	4 at South Dakota St. (8/28/16)
Shots on Goal	1, 5x, last vs. Iowa State (10/28/16)

Will be forced to sit out this season after tearing her ACL in a spring exhibition match in April ... Appeared in 20 of KU's 21 outings in 2016, averaging 30.6 minutes per outing ... Turned in a season-high four shots in KU's 1-1 draw at South Dakota State (8/28) ... Tallied 10 shots on the year, three of which were on target ... Named to the Academic All-Big 12 First Team.



9 MADISON MEADOR (MEH-der) SO • Midfielder • 5-7 • Ballwin, Mo. • Marquette HS/Ole Miss

GP-GS	Min	G	A	Pts	Shot	Sh%	SOG	SOG%	GW	PK-Att	
2016*	20-18	-	0	0	0	13	.000	4	.308	0	0-0
2017	13-2	544	0	2	2	2	.000	1	.000	0	0-0
33-20	544	0	2	2	15	.000	5	.333	0	0-0	

Minutes	67 vs. Texas A&M (9/10/17)
Goals	---
Assists	1, 2x, last at Texas Tech (9/24/17)
Shots	2, 5x, last vs. Troy (9/4/16)
Shots on Goal	1, 4x, last at LSU (9/16/16)

Averaging 41.8 min/gm in 13 appearances as a midfielder this season ... Posted first start at KU in match at Utah (9/15) ... Logged a season-high 67 min in match vs. Texas A&M (9/10) ... Assisted on Hannah Lukinac's game-winner vs. Oregon State (8/27) ... Transferred to Kansas following a solid freshman season at Ole Miss, where she started on the back line in 18 of the Rebels' 20 matches.

* at Ole Miss



10 MIRIAM MELUGIN (mel-OO-jin) SR • Midfielder • 5-8 • Springfield, Mo. • Kickapoo HS

GP-GS	Min	G	A	Pts	Shot	Sh%	SOG	SOG%	GW	PK-Att	
2014	7-0	125	0	0	0	2	.000	0	.000	0	0-0
2015	13-0	219	0	0	0	5	.000	1	.200	0	0-0
2016	19-1	458	0	0	0	8	.000	3	.375	0	0-0
2017	0-0	0	0	0	0	0	.000	0	.000	0	0-0
TOTAL 39-1	802	0	0	0	15	.000	4	.267	0	0-0	

Minutes	62 at Texas (10/2/16)
Goals	---
Assists	---
Shots	2, 4x, last vs. Oklahoma St. (10/9/16)
Shots on Goal	1, 4x, last vs. Iowa State (10/28/16)

Will be forced to sit out this season after tearing her ACL over the summer ... Appeared in 19 of the Jayhawks' 21 matches in 2016, which included her first-career start in KU's 1-0 win at Texas (10/2) ... Her 458 minutes of field action more than doubled her total minutes from her first two seasons combined.



11 MAIA WILLIAMS JR • Forward • 5-4 • Piscataway, N.J. • Piscataway HS/Monroe College

GP-GS	Min	G	A	Pts	Shot	Sh%	SOG	SOG%	GW	PK-Att	
2015*	18-14	970	9	10	28	32	.281	19	.594	1	0-0
2016*	11-11	680	12	1	25	32	.375	23	.719	1	0-0
2017	7-0	94	0	0	0	3	.000	2	.667	0	0-0
36-25	1776	21	11	53	67	.313	44	.657	2	0-0	

Minutes	110, 3x, last at Utah Eastern (9/11/15)
Goals	3 vs. College of Southern (9/15/15)
Assists	2, 2x, last vs. CCRI (11/8/15)
Points	7 vs. College of Southern (9/15/15)
Shots	10 vs. Burlington City College (10/3/16)
Shots on Goal	9 vs. Burlington City College (10/3/16)

Has seen action in seven of the Jayhawks' last 10 matches after being cleared by the NCAA following a transfer ... Transferred to Kansas after playing 2015 and 2016 at Monroe College ... Helped the Mustangs to a regional and district championship as well as the NJCAA semifinals in 2015 ... As a sophomore scored 12 goals and added an assist in her 11 outings.

* at Monroe College



12 KATIE McCLURE SO • Forward • 5-4 • Wichita, Kan. • Maize HS

GP-GS	Min	G	A	Pts	Shot	Sh%	SOG	SOG%	GW	PK-Att	
2016	21-16	1405	5	2	12	54	.093	28	.519	3	0-0
2017	14-14	1023	3	2	8	34	.088	16	.471	0	0-0
35-30	2428	8	4	20	88	.091	44	.500	3	0-0	

Minutes	87 at TCU (9/22/17)
Goals	1, 8x, last at Iowa State (9/29/17)
Assists	1, 4x, last vs. Colorado College (9/1/17)
Shots	5, 3x, last vs. Oklahoma St. (10/9/16)
Shots on Goal	4 at South Dakota St. (8/26/16)

Netted her third goal of the year in KU's 2-1 win at Iowa State (9/29) ... A starter in 14 games this season, averaging 73.1 min/gm ... Saw action in all 21 of KU's matches in 2016 and was a member of the starting line-up in each of the final 16 contests ... Scored five goals and added two assists for 12 points, the most by a KU freshman since 2012.



13 KATHRYN CASTRO FR • Midfielder • 5-3 • Plano, Texas • Plano West Senior High

GP-GS	Min	G	A	Pts	Shot	Sh%	SOG	SOG%	GW	PK-Att	
2017	13-3	431	0	0	0	6	.000	2	.333	0	0-0
13-3	431	0	0	0	6	.000	2	.333	0	0-0	

Minutes	67 at Texas Tech (9/24/17)
Goals	---
Assists	---
Shots	2 vs. Tulsa (8/25/17)
Shots on Goal	1, 2x last at Texas Tech (9/24/17)

A reserve midfielder who is averaging 33.2 min/gm in 13 outings this season ... Saw first start of career in KU's 1-1 draw at Texas Tech (9/24) ... Named HS team's most valuable offensive player following the 2016 season ... Helped the Wolves to the 6A District 6 title in 2015 ... Spent four successful years as a member of the Solar Chelsea Soccer Club from 2013-17.



14 ALEX SCHWEITZER (SHWITE-zer) JR • Defender • 6-0 • Tampa, Fla. • Carrollwood Day / Virginia Tech

GP-GS	Min	G	A	Pts	Shot	Sh%	SOG	SOG%	GW	PK-Att	
2014*	5-0	113	0	0	0	1	.000	1	1.000	0	0-0
2015*	1-0	31	0	0	0	0	.000	0	.000	0	0-0
2016	4-0	28	0	0	0	0	.000	0	.000	0	0-0
2017	11-0	204	0	1	1	2	.000	1	.500	0	0-0
22-0	376	0	1	1	3	.000	2	.667	0	0-0	

Minutes	37 vs. Duke (9/28/14)
Goals	---
Assists	1 vs. Central Michigan (8/20/17)
Shots	1, 3x, last at TCU (9/22/17)
Shots on Goal	1 at Longwood (9/9/14)

Has seen time in 11 of KU's 13 matches this season, averaging 18.5 min/gm in those outings ... Tallied first assist of her career in KU's 3-0 win over Central Michigan (8/20) ... Saw action in four matches in her first season in a Jayhawk uniform last year ... Longest outing of the year came in a 28-minute appearance in the Jayhawks' 2-0 win over Oregon State (8/27).

* at Virginia Tech



15 CERI HOLLAND FR • Defender/Midfielder • 5-5 • West Yorkshire, England • South Craven School

GP-GS	Min	G	A	Pts	Shot	Sh%	SOG	SOG%	GW	PK-Att	
2017	14-14	1080	1	0	2	28	.036	13	.464	0	0-0
14-14	1080	1	0	2	28	.036	13	.464	0	0-0	

Minutes	105 at Saint Louis (9/8/17)
Goals	1 vs. Central Michigan (8/20/17)
Assists	---
Shots	5 at Utah (9/15/17)
Shots on Goal	4 at Utah (9/15/17)

A starter in all 14 of KU's contests and is seeing 77.1 minutes per appearance ... Netted first goal of collegiate career in KU's 3-0 win over Central Michigan (8/20) ... Came to Kansas after three-year stint with Manchester City's developmental team ... A member of Wales' U19 National Team during qualifiers for the 2016 UEFA European Championship, making three appearances.



17 TAYLOR CHRISTIE SO • Defender • 5-6 • Overland Park, Kan. • Shawnee Mission South HS

GP-GS	Min	G	A	Pts	Shot	Sh%	SOG	SOG%	GW	PK-Att	
2015	Redshirt Season										
2016	1-0	6	0	0	0	0	.000	0	.000	0	0-0
2017	14-1	368	0	0	0	11	.000	3	.273	0	0-0
15-1	374	0	0	0	11	.000	3	.273	0	0-0	

Minutes	55 at BYU (9/18/17)
Goals	---
Assists	---
Shots	3, 2x, last vs. Kansas State (10/6/17)
Shots on Goal	1, 3x, last vs. Kansas State (10/6/17)

Averaging just over 26.3 minutes in KU's first 14 outings this year ... Saw first start of career in KU's 1-1 draw at Texas Tech (9/24) ... Logged a career-high three shots in draw at Saint Louis (9/8) ... Sat out 2015 season after suffering knee injury ... Finished high school career with 86 points, No. 2 in program history behind former Raider and Kansas Jayhawk Ali Kimura.



19

EVA ELÍASDÓTTIR (*ell-EYE-iss-daw-ter*) SO • Defender • 5-9 • Thorlakshofn, Iceland • Fjölbrotaskóli Suðurlands

GP-GS	Min	G	A	Pts	Shot	Sh%	SOG	SOG%	GW	PK-Att
2016	16-0	297	0	1	3	.000	2	.667	0	0-0
2017	14-14	1165	1	3	5	.200	1	.200	0	0-0
30-14		1462	1	2	4	.125	3	.375	0	0-0

Minutes	101 at Saint Louis (9/8/17)
Goals	1 at BYU (9/18/17)
Assists	1, 2x, last at Saint Louis (9/8/17)
Shots	1, 5x last vs. Kansas State (10/6/17)
Shots on Goal	1, 2x, last at BYU (9/18/17)

A starter on KU's back line in all 14 matches ... Netted first-career goal in third minute vs. BYU (9/18) ... Saw action in 16 of KU's 21 matches a year ago, which included each of the final 10 contests ... Averaged 18.5 points per match and 22 minutes per game in the final five games of the season ... Helped team place second in Iceland Women's Cup in 2014 and 2015.



20

KAYLA MORRISON SR • Defender • 5-9 • Corona, Calif. • Corona HS

GP-GS	Min	G	A	Pts	Shot	Sh%	SOG	SOG%	GW	PK-Att
2014	21-21	1531	1	1	3	.125	4	.500	0	0-0
2015	21-21	1977	0	0	0	.000	6	.316	0	0-0
2016	21-21	1985	0	1	1	.000	4	.190	0	0-0
2017	14-14	1315	1	0	2	.077	9	.692	0	0-0
77-77		6808	2	2	6	.033	23	.377	0	0-0

Minutes	110, 9x, last at Texas Tech (9/24/17)
Goals	1, 2x, last at Tulsa (8/25/17)
Assists	1, 2x, last vs. Valparaiso (9/4/16)
Points	2 at TCU (9/28/14)
Shots	3, 2x, last vs. Oklahoma St. (10/9/16)
Shots on Goal	2, 3x, last at Iowa State (9/29/17)

A center-back that has played every minute of KU's season thus far ... Boasts a games-started streak of 76 games, starting each of KU's matches over the last three-plus seasons ... Logged 1,985 minutes in 2016, the fourth-most by a field player in school history ... Tallied a career-high 21 shots, posting one shot or more in 14 games ... Named to the All-Big 12 Second Team in 2016.



21

ISABELLA CAVALCANTE FR • Defender • 5-7 • Glen Ellyn, Ill. • Glenbard West HS

GP-GS	Min	G	A	Pts	Shot	Sh%	SOG	SOG%	GW	PK-Att
2017	14-14	1132	1	1	3	.143	3	.429	1	0-0
14-14		1132	1	1	3	.143	3	.429	1	0-0

Minutes	110 at Texas Tech (9/24/17)
Goals	1 at Iowa State (9/29/17)
Assists	1 at Oregon State (8/27/17)
Shots	2 vs. Central Michigan (8/20/17)
Shots on Goal	1, 2x, last at Iowa State (9/29/17)

Has started each of the Jayhawks' first 13 matches at right-back, averaging 80.2 min/gm ... Tallied first collegiate goal and eventual game-winner vs. Iowa State (9/29) ... Member of the Sockers FC club team out of Chicago ... Helped Sockers to ECNL national playoffs in three-straight years from 2014-16 ... Selected to the Illinois Olympic Development team in 2011.



22

MANDI DUGGAN SO • Forward • 5-2 • Aurora, Colo. • Grandview HS

GP-GS	Min	G	A	Pts	Shot	Sh%	SOG	SOG%	GW	PK-Att
2016	20-4	504	3	0	6	.300	3	.300	3	0-0
2017	0-0	0	0	0	0	.000	0	.000	0	0-0
20-4		504	3	0	6	.300	3	.300	3	0-0

Minutes	57 vs. Minnesota (8/19/16)
Goals	1, 3x, last vs. Pittsburg (9/9/16)
Assists	---
Shots	4 vs. Minnesota (8/19/16)
Shots on Goal	1, 2x, last vs. Colorado (8/26/16)

Will be forced to sit the season after suffering a knee injury in KU's preseason exhibition match vs. Iowa on Aug. 12 ... Appeared in 20 of KU's 21 matches in 2016 and notched four starts ... Scored three goals in her debut season, all of which came within the first seven games.



24

ELISE REINA SO • Defender • 5-2 • Fayetteville, Ark. • Har-Ber HS

GP-GS	Min	G	A	Pts	Shot	Sh%	SOG	SOG%	GW	PK-Att
2016	3-0	12	0	0	0	.000	0	.000	0	0-0
2017	12-1	348	0	1	1	.000	0	.000	0	0-0
15-1		360	0	1	1	.000	0	.000	0	0-0

Minutes	62 at TCU (9/22/17)
Goals	---
Assists	1 vs. Texas A&M (9/10/7)
Shots	1, 2x, last at BYU (9/18/17)
Shots on Goal	---

Averaging 30.5 min/gm in 11 appearances for KU this year ... Posted first-career start vs. TCU (9/22) ... Saw career-high 62 minutes vs. TCU (9/22) ... Tallied first collegiate assist on Grace Hagan's goal vs. Texas A&M (9/10) ... Named first team all-state in 2013 and 2016 at Har-Ber HS ... Earned all-conference honors all four years of HS.



25

GRACE HAGAN (*HAY-ghen*) JR • Forward • 5-10 • Wichita, Kan. • Kapaun Mt. Carmel Catholic HS

GP-GS	Min	G	A	Pts	Shot	Sh%	SOG	SOG%	GW	PK-Att
2015	21-21	1486	4	3	11	.333	10	.333	1	0-0
2016	21-19	1646	7	4	18	.444	23	.489	2	3-3
2017	14-13	1130	5	3	13	.269	14	.583	1	2-2
56-53		4262	16	10	42	.333	47	.465	4	5-5

Minutes	106 at Texas Tech (9/24/17)
Goals	1, 16x, last at BYU (9/18/17)
Assists	2 vs. Central Michigan (8/20/17)
Points	3, 3x, last vs. Pittsburgh (9/9/16)
Shots	7 vs. Pittsburgh (9/9/16)
Shots on Goal	4 vs. UMKC (9/11/16)

Notched first two-assist outing of career in KU's 3-0 win over Central Michigan (8/20) ... Entered the year as 1 of 30 players on the MAC Hermann Trophy Watch List ... Called to the U.S. National Team's U23 Camp in late July ... Named to the NSCAA All-Central Region First Team and to the All-Big 12 First Team as a sophomore in 2016.



26

ADDISYN MERRICK SO • Defender • 5-6 • Lee's Summit, Mo. • Lee's Summit North HS

GP-GS	Min	G	A	Pts	Shot	Sh%	SOG	SOG%	GW	PK-Att
2016	21-14	1630	1	0	2	.111	5	.455	0	0-0
2017	14-14	1307	0	0	0	.000	0	.000	0	0-0
35-28		2937	1	0	2	.111	5	.455	0	0-0

Minutes	110, 4x, last at Texas Tech (9/24/17)
Goals	1 at Baylor (10/23/16)
Assists	---
Shots	2 vs. Oklahoma St. (10/9/16)
Shots on Goal	1, 5x, last vs. Missouri (11/13/16)

A starter at center-back in each of KU's 14 matches this season ... Appeared in all 21 of Kansas' 2016 matches, which included starts in 14 of the team's last 15 contests ... Named to the Big 12 All-Freshman Team ... Posted 11 shots on the year and tallied at least one shot in five of KU's last seven matches.



27

SOPHIE MAIERHOFER (*MY-er-HOF-er*) SO • Midfielder • 5-7 • Graz, Austria • University of Bremen

GP-GS	Min	G	A	Pts	Shot	Sh%	SOG	SOG%	GW	PK-Att
2016	12-9	714	1	0	2	.333	2	.667	0	0-0
2017	12-11	740	4	0	8	.235	8	.471	1	0-0
24-20		1454	5	0	10	.250	10	.500	1	0-0

Minutes	110 at South Dakota St. (8/28/16)
Goals	2 vs. Central Michigan (8/20/17)
Assists	---
Shots	5 vs. Central Michigan (8/20/17)
Shots on Goal	2, 2x, last at Oregon State (8/27/17)

Sent in her fourth goal of the year in KU's 1-1 draw at Texas Tech (9/24) ... Posted first multi-goal match of her career with a pair vs. Central Michigan (8/20) ... Member of Austrian squad that advanced to the semifinals of the UEFA European Championships this summer.

2017 CATEGORICAL RECORDS

	Big 12	Overall		Big 12	Overall
Overall	0-0-0	6-6-2	vs. RPI 1-25 opponents	0-0-0	0-1-0
Home	0-0-0	3-3-0	vs. RPI 26-50 opponents	0-0-0	0-1-0
Road	0-0-0	3-3-2	vs. RPI 51-100 opponents	0-0-0	1-3-2
Neutral Sites	0-0-0	0-0-0	vs. RPI 101-150 opponents	0-0-0	0-0-0
			vs. RPI 151+ opponents	0-0-0	5-1-0
On Fridays	0-0-0	3-4-1			
On Sundays	0-0-0	3-1-1	vs. UnitedSoccer ranked opponents	0-0-0	1-2-0
On Mondays	0-0-0	0-1-0	vs. UnitedSoccer Top-10 opponents	0-0-0	1-0-0
			vs. UnitedSoccer unranked opponents	0-0-0	5-4-2
When Scoring First	0-0-0	5-1-1			
When Opponent Scores First	0-0-0	1-5-1	vs. nonconference opponents	0-0-0	5-4-1
When Leading at Half	0-0-0	4-0-0			
When Trailing at Half	0-0-0	1-4-0	In one-goal games	0-0-0	2-4-0
When Tied at Half	0-0-0	1-2-2			
In Regulation	0-0-0	6-5-0	In 90+ degrees	0-0-0	1-0-0
In Overtime	0-0-0	0-1-2	In 80-89 degrees	0-0-0	3-4-1
			In 70-79 degrees	0-0-0	2-1-1
In August	0-0-0	3-1-0	In 60-69 degrees	0-0-0	0-1-0
In September	0-0-0	3-4-2	In 50-59 degrees	0-0-0	0-0-0
In October	0-0-0	0-1-0	In sub-50 degrees	0-0-0	0-0-0
In November	0-0-0	0-0-0			
When scoring zero goals	0-0-0	0-3-0	Wearing white/blue uniforms	0-0-0	3-2-1
When scoring one goal	0-0-0	0-2-2	Wearing red/blue uniforms	0-0-0	2-2-0
When scoring two goals	0-0-0	5-1-0	Wearing alternate uniforms	0-0-0	1-2-1
When scoring three goals	0-0-0	1-0-0			
When scoring four goals or more	0-0-0	0-0-0	In televised games	0-0-0	2-5-0
When allowing zero goals	0-0-0	4-0-0			
When allowing one goal	0-0-0	2-2-2			
When allowing two goals	0-0-0	0-1-0			
When allowing three goals	0-0-0	0-2-0			
When allowing four goals or more	0-0-0	0-1-0			
When outshooting opponent	0-0-0	4-2-1			
When being outshot	0-0-0	2-4-1			
When tied in shots	0-0-0	0-0-0			

MISCELLANEOUS STATS

QUICKEST GOAL:
2:36 - Eva Eliasdottir vs. BYU, 9/18/17

QUICKEST GOAL AGAINST:
6:52 - Meg Brandt (Nebraska), 8/18/17

GAME-WINNING GOALS AFTER 75':
83:32 - Isabella Cavalcante vs. Iowa St, 9/29/17

GAME-TYING GOALS AFTER 75':
None

GAME-WINNING GOALS AGAINST AFTER 75':
105:16 - Tara Smith (TCU), 9/22/17

GAME-TYING GOALS AGAINST AFTER 75':
None

MULTI-GOAL GAMES:
Sophie Maierhofer (2) vs. Central Mich., 8/20/17

MULTI-GOAL GAMES AGAINST:
Nadia Gomes (3) of BYU, 9/18/17

HAT TRICKS:
None

HAT TRICKS AGAINST:
None

OWN GOALS FOR:
73:20 vs. USC, 9/3/17

OWN GOALS AGAINST:
51:34 vs. Texas A&M, 9/10/17

RED CARDS:
Mark Francis (HC) vs. BYU, 9/18/17
Hannah Lukinac vs. TCU, 9/22/17

OPPONENT RED CARDS:
None

2017 STARTERS - BY MATCH

	GK	F	F	F	M	M	M	D	D	D	D
Nebraska (8/18)	Dobyns . . .	McClure . . .	Hopkins . . .	Heuchan . . .	Maierhofer . . .	Holland . . .	Lukinac . . .	Cavalcante . . .	Morrison . . .	Merrick . . .	Eliasdottir . . .
Central Michigan (8/20)	Dobyns . . .	McClure . . .	Hagan . . .	Heuchan . . .	Maierhofer . . .	Holland . . .	Lukinac . . .	Cavalcante . . .	Morrison . . .	Merrick . . .	Eliasdottir . . .
Tulsa (8/25)	Dobyns . . .	McClure . . .	Hagan . . .	Heuchan . . .	Maierhofer . . .	Holland . . .	Lukinac . . .	Cavalcante . . .	Morrison . . .	Merrick . . .	Eliasdottir . . .
Oregon State (8/27)	Dobyns . . .	McClure . . .	Hagan . . .	Heuchan . . .	Maierhofer . . .	Holland . . .	Lukinac . . .	Cavalcante . . .	Morrison . . .	Merrick . . .	Eliasdottir . . .
Colorado College (9/1)	Dobyns . . .	McClure . . .	Hagan . . .	Heuchan . . .	Maierhofer . . .	Holland . . .	Lukinac . . .	Cavalcante . . .	Morrison . . .	Merrick . . .	Eliasdottir . . .
Southern California (9/3)	Dobyns . . .	McClure . . .	Hagan . . .	Heuchan . . .	Maierhofer . . .	Holland . . .	Lukinac . . .	Cavalcante . . .	Morrison . . .	Merrick . . .	Eliasdottir . . .
St. Louis (9/8)	Dobyns . . .	McClure . . .	Hagan . . .	Heuchan . . .	Maierhofer . . .	Holland . . .	Lukinac . . .	Cavalcante . . .	Morrison . . .	Merrick . . .	Eliasdottir . . .
Texas A&M (9/10)	Dobyns . . .	McClure . . .	Hagan . . .	Heuchan . . .	Maierhofer . . .	Holland . . .	Lukinac . . .	Cavalcante . . .	Morrison . . .	Merrick . . .	Eliasdottir . . .
Utah (9/15)	Dobyns . . .	McClure . . .	Hagan . . .	Heuchan . . .	Meador . . .	Holland . . .	Lukinac . . .	Cavalcante . . .	Morrison . . .	Merrick . . .	Eliasdottir . . .
BYU (9/18)	Dobyns . . .	McClure . . .	Hagan . . .	Heuchan . . .	Meador . . .	Holland . . .	Lukinac . . .	Cavalcante . . .	Morrison . . .	Merrick . . .	Eliasdottir . . .
	GK	F	F	M	M	M	M	D	D	D	D
TCU (9/22)	Dobyns . . .	McClure . . .	Hagan . . .	Reina . . .	Maierhofer . . .	Holland . . .	Lukinac . . .	Cavalcante . . .	Morrison . . .	Merrick . . .	Eliasdottir . . .
	GK	F	F	F	M	M	M	D	D	D	D
Texas Tech (9/24)	Dobyns . . .	McClure . . .	Hagan . . .	Christie . . .	Heuchan . . .	Holland . . .	Castro . . .	Cavalcante . . .	Morrison . . .	Merrick . . .	Eliasdottir . . .
Iowa State (9/29)	Dobyns . . .	McClure . . .	Hagan . . .	Heuchan . . .	Maierhofer . . .	Holland . . .	Castro . . .	Cavalcante . . .	Morrison . . .	Merrick . . .	Eliasdottir . . .
Kansas State (10/6)	Dobyns . . .	McClure . . .	Hagan . . .	Heuchan . . .	Maierhofer . . .	Holland . . .	Castro . . .	Cavalcante . . .	Morrison . . .	Merrick . . .	Eliasdottir . . .
Texas (10/13)											
Baylor (10/15)											
Oklahoma (10/20)											
Oklahoma State (10/22)											
West Virginia (10/24)											

OVERALL STATISTICS

2017 Kansas Soccer
Kansas Overall Individual Statistics (as of Oct 06, 2017)
All games

Overall: 6-6-2 Conf: 1-2-1 Home: 3-3-0 Away: 3-3-2 Neut: 0-0-0

##	Player	gp-gs	min	g	a	pts	sh	sh%	sog	sog%	yc	rc	gwg	pk-att	foul	cnr
25	Hagan, Grace	14-13	1130	5	3	13	24	.208	14	.583	1	0	1	2-2	0	2
27	Maierhofer, Sophie	12-11	740	4	0	8	17	.235	8	.471	0	0	1	0-0	0	0
12	McClure, Katie	14-14	1023	3	2	8	34	.088	16	.471	4	0	0	0-0	0	39
2	Heuchan, Lois	14-13	1039	1	4	6	30	.033	14	.467	0	0	1	0-0	0	29
21	Cavalcante, Isabella	14-14	1132	1	1	3	7	.143	3	.429	1	0	1	0-0	0	0
19	Eliasdottir, Eva	14-14	1165	1	1	3	5	.200	1	.200	0	0	0	0-0	0	0
15	Holland, Ceri	14-14	1080	1	0	2	28	.036	13	.464	2	0	0	0-0	0	1
20	Morrison, Kayla	14-14	1315	1	0	2	13	.077	9	.692	1	0	0	0-0	0	0
6	Lukinac, Hannah	13-11	732	1	0	2	5	.200	1	.200	1	1	1	0-0	0	0
9	Meador, Madison	13-2	544	0	2	2	2	.000	1	.500	0	0	0	0-0	0	7
3	Hopkins, Amari	14-1	402	0	1	1	6	.000	3	.500	0	0	0	0-0	0	0
14	Schweitzer, Alex	11-0	204	0	1	1	2	.000	1	.500	0	0	0	0-0	0	0
24	Reina, Elise	12-1	348	0	1	1	1	.000	0	.000	1	0	0	0-0	0	1
17	Christie, Taylor	14-1	368	0	0	0	11	.000	3	.273	0	0	0	0-0	0	0
13	Castro, Kathryn	13-3	431	0	0	0	6	.000	2	.333	0	0	0	0-0	0	0
11	Williams, Maia	7-0	94	0	0	0	3	.000	2	.667	0	0	0	0-0	0	0
26	Merrick, Addisyn	14-14	1307	0	0	0	0	.000	0	.000	0	0	0	0-0	0	0
7	Hall, Avery	1-0	13	0	0	0	0	.000	0	.000	0	0	0	0-0	0	0
5	Pesek, Olivia	3-0	24	0	0	0	0	.000	0	.000	0	0	0	0-0	0	0
	Total	14	-	19	16	54	194	.098	92	.474	12	2	6	2-2	135	-
	Opponents	14	-	19	14	52	181	.105	71	.392	7	0	6	3-4	126	-

#	Goalie	gp-gs	Goal Average			Saves		Record				Shots faced
			min	ga	gaavg	saves	pct	w	l	t	sho/cbo	
00	Dobyns, Maddie	14-14	1270:16	16	1.13	50	.758	6	6	2	4/0	165
1	Gibbs, Regan	1-0	45:00	3	6.00	1	.250	0	0	0	0/0	12
TM	TEAM	-	0:00	0	0.00	1	1.000	0	0	0	0/0	0
	Total	14	1315:16	19	1.30	52	.732	6	6	2	4	177
	Opponents	14	1315:16	19	1.30	73	.793	6	6	2	3	191

Team saves: 1

Goals by Period	1st	2nd	OT	OT2	Total
Kansas	7	12	0	0	19
Opponents	10	8	0	1	19

Corners by Period	1st	2nd	OT	OT2	Total
Kansas	36	42	1	0	79
Opponents	39	38	3	2	82

Shots by Period	1st	2nd	OT	OT2	Total
Kansas	99	89	4	2	194
Opponents	87	83	6	5	181

Fouls by Period	1st	2nd	OT	OT2	Total
Kansas	60	73	0	2	135
Opponents	50	63	7	6	126

Saves by Period	1st	2nd	OT	OT2	Total
Kansas	20	30	1	1	52
Opponents	32	37	2	2	73

Attendance Summary	KU	Opponent
Total	6234	11092
Dates/Avg Per Date	6/1039	8/1386
Neutral Site #/Avg	0/0	

CONFERENCE-ONLY STATISTICS

2017 Kansas Soccer
Kansas Overall Individual Statistics (as of Oct 06, 2017)
Conference games

Overall: 1-2-1 Conf: 1-2-1 Home: 0-1-0 Away: 1-1-1 Neut: 0-0-0

##	Player	gp-gs	min	g	a	pts	sh	sh%	sog	sog%	yc	rc	gwg	pk-att	foul	cnr
12	McClure, Katie	4-4	335	1	0	2	15	.067	7	.467	1	0	0	0-0	0	14
27	Maierhofer, Sophie	4-3	255	1	0	2	6	.167	2	.333	0	0	0	0-0	0	0
21	Cavalcante, Isabella	4-4	395	1	0	2	2	.500	1	.500	1	0	1	0-0	0	0
9	Meador, Madison	3-0	94	0	1	1	1	.000	1	1.000	0	0	0	0-0	0	2
3	Hopkins, Amari	4-0	89	0	1	1	0	.000	0	.000	0	0	0	0-0	0	0
25	Hagan, Grace	4-4	375	0	0	0	12	.000	5	.417	0	0	0	0-0	0	0
2	Heuchan, Lois	4-3	286	0	0	0	9	.000	4	.444	0	0	0	0-0	0	9
20	Morrison, Kayla	4-4	395	0	0	0	6	.000	4	.667	0	0	0	0-0	0	0
17	Christie, Taylor	4-1	131	0	0	0	4	.000	1	.250	0	0	0	0-0	0	0
15	Holland, Ceri	4-4	350	0	0	0	4	.000	1	.250	1	0	0	0-0	0	0
19	Eliasdottir, Eva	4-4	337	0	0	0	3	.000	0	.000	0	0	0	0-0	0	0
13	Castro, Kathryn	4-3	196	0	0	0	2	.000	1	.500	0	0	0	0-0	0	0
14	Schweitzer, Alex	2-0	36	0	0	0	1	.000	0	.000	0	0	0	0-0	0	0
6	Lukinac, Hannah	3-1	90	0	0	0	1	.000	0	.000	0	1	0	0-0	0	0
26	Merrick, Addisyn	4-4	395	0	0	0	0	.000	0	.000	0	0	0	0-0	0	0
24	Reina, Elise	3-1	112	0	0	0	0	.000	0	.000	0	0	0	0-0	0	0
5	Pesek, Olivia	3-0	24	0	0	0	0	.000	0	.000	0	0	0	0-0	0	0
Total		4	-	3	2	8	66	.045	27	.409	3	1	1	0-0	40	-
Opponents		4	-	4	2	10	54	.074	12	.222	4	0	2	0-0	43	-

#	Goalie	gp-gs	Goal Average			Saves		Record				Shots faced
			min	ga	gaavg	saves	pct	w	l	t	sho/cbo	
00	Dobyns, Maddie	4-4	395:16	4	0.91	8	.667	1	2	1	0/0	54
Total		4	395:16	4	0.91	8	.667	1	2	1	0	54
Opponents		4	395:16	3	0.68	24	.889	2	1	1	2	66

Team saves: 0

Goals by Period	1st	2nd	OT	OT2	Total
Kansas	1	2	0	0	3
Opponents	2	1	0	1	4

Corners by Period	1st	2nd	OT	OT2	Total
Kansas	10	15	0	0	25
Opponents	15	11	1	1	28

Shots by Period	1st	2nd	OT	OT2	Total
Kansas	31	33	0	2	66
Opponents	26	20	4	4	54

Fouls by Period	1st	2nd	OT	OT2	Total
Kansas	19	20	0	1	40
Opponents	12	21	5	5	43

Saves by Period	1st	2nd	OT	OT2	Total
Kansas	4	3	1	0	8
Opponents	9	13	0	2	24

Attendance Summary	KU	Opponent
Total	2514	2274
Dates/Avg Per Date	1/2514	3/758
Neutral Site #/Avg	0/0	

2017 RESULTS

2017 Kansas Soccer
Kansas Game Results (as of Oct 06, 2017)
All games

Date	Opponent	Score	Overall	Conf	Att.	Goals scored
Aug 18	#22 NEBRASKA	L 0-3	0-1-0	0-0-0	737	-
Aug 20	CENTRAL MICHIGAN	W 3-0	1-1-0	0-0-0	573	Maierhofer, Sophie (Hagan, Grace) Maierhofer, Sophie (Hagan, Grace) Holland, Ceri (Heuchan, Lois;Schweitzer, Alex)
Aug 25	at Tulsa	W 2-0	2-1-0	0-0-0	422	Hagan, Grace (McClure, Katie) Morrison, Kayla (Heuchan, Lois)
Aug 27	at Oregon State	W 2-0	3-1-0	0-0-0	335	Lukinac, Hannah (Meador, Madison) Maierhofer, Sophie (Cavalcante, Isabella)
Sep 01	COLORADO COLLEGE	W 2-0	4-1-0	0-0-0	599	Heuchan, Lois (McClure, Katie) Hagan, Grace (penalty kick)
Sep 03	#7 USC	W 2-1	5-1-0	0-0-0	1270	McClure, Katie (Hagan, Grace) TEAM (unassisted)
Sep 08	at Saint Louis	TO2 1-1	5-1-1	0-0-0	5205	McClure, Katie (Eliasdottir, Eva)
Sep 10	#10 TEXAS A&M	L 1-5	5-2-1	0-0-0	541	Hagan, Grace (Reina, Elise)
Sep 15	at #25 Utah	L 1-2	5-3-1	0-0-0	1786	Hagan, Grace (penalty kick)
Sep 18	at Brigham Young	L 2-3	5-4-1	0-0-0	1070	Eliasdottir, Eva (Heuchan, Lois) Hagan, Grace (Heuchan, Lois)
* Sep 22	at TCU	LO2 0-1	5-5-1	0-1-0	1154	-
* Sep 24	at Texas Tech	TO2 1-1	5-5-2	0-1-1	408	Maierhofer, Sophie (Meador, Madison;Hopkins, Amari)
* Sep 29	at Iowa State	W 2-1	6-5-2	1-1-1	712	McClure, Katie (unassisted) Cavalcante, Isabella (unassisted)
* Oct 06	KANSAS STATE	L 0-1	6-6-2	1-2-1	2514	-

Team Record	W-L-T	Attendance	Dates	Total	Avg.
Overall:	6-6-2	Total:	14	17326	1238
Conference:	1-2-1	Home:	6	6234	1039
Home:	3-3	Away:	8	11092	1386
Away:	3-3-2	Neutral:	0	0	0
Neutral:	0-0				
Overtime:	0-1-2				

KANSAS TEAM STATS GAME-BY-GAME

Date	Opponent	Score	G	A	Pts	Sh	Sh%	Sog	Sog%	GW	PK-Att	YC	RC	Min
Aug 18, 2017	NEBRASKA	0-3	0	0	0	8	.000	2	.250	0	0-0	1	0	990
Aug 20, 2017	CENTRAL MICHIGAN	3-0	3	4	10	22	.136	11	.500	1	0-0	0	0	989
Aug 25, 2017	at Tulsa	2-0	2	2	6	14	.143	7	.500	1	0-0	0	0	992
Aug 27, 2017	at Oregon State	2-0	2	2	6	14	.143	7	.500	1	0-0	1	0	992
Sep 01, 2017	COLORADO COLLEGE	2-0	2	1	5	10	.200	8	.800	1	1-1	1	0	991
Sep 03, 2017	USC	2-1	2	1	5	6	.333	3	.500	1	0-0	1	0	990
Sep 08, 2017	at Saint Louis	1-1	1	1	3	17	.059	9	.529	0	0-0	0	0	1210
Sep 10, 2017	TEXAS A&M	1-5	1	1	3	8	.125	5	.625	0	0-0	1	0	982
Sep 15, 2017	at Utah	1-2	1	0	2	19	.053	8	.421	0	1-1	1	0	990
Sep 18, 2017	at Brigham Young	2-3	2	2	6	10	.200	5	.500	0	0-0	3	1	990
Sep 22, 2017	at TCU	0-1	0	0	0	6	.000	1	.167	0	0-0	0	1	1155
Sep 24, 2017	at Texas Tech	1-1	1	2	4	14	.071	8	.571	0	0-0	2	0	1211
Sep 29, 2017	at Iowa State	2-1	2	0	4	21	.095	9	.429	1	0-0	0	0	990
Oct 06, 2017	KANSAS STATE	0-1	0	0	0	25	.000	9	.360	0	0-0	1	0	976
Kansas		19-19	19	16	54	194	.098	92	.474	6	2-2	12	2	14448
			19	14	52	181	.105	71	.392	6	3-4	7	0	-

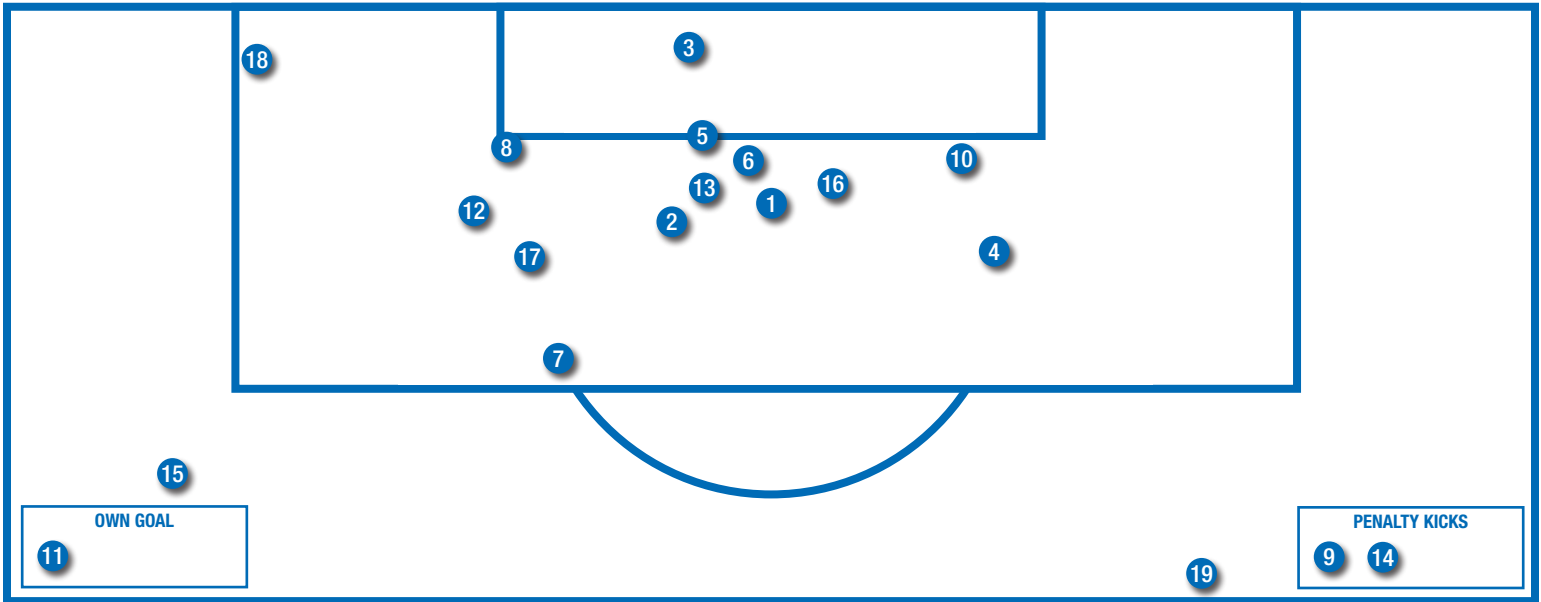
TEAM PER-GAME

KANSAS GAME-BY-GAME COMPARISON (KANSAS/OPPONENT)

Date	Opponent	Score	Goals	Assists	Shots	On Goal	Corners	CKgoals	Fouls	YC	RC	Offside
Aug 18	NEBRASKA	0-3	0/3	0/4	8/13	2/8	0/1	0/0	9/4	1/0	0/0	5/0
Aug 20	CENTRAL MICHIGAN	3-0	3/0	4/0	22/8	11/3	7/4	0/0	4/4	0/0	0/0	1/1
Aug 25	Tulsa	2-0	2/0	2/0	14/6	7/3	10/4	1/0	10/10	0/0	0/0	2/0
Aug 27	Oregon State	2-0	2/0	2/0	14/15	7/6	8/6	1/0	12/12	1/0	0/0	3/0
Sep 01	COLORADO COLLEGE	2-0	2/0	1/0	10/7	8/3	4/1	0/0	12/6	1/0	0/0	3/2
Sep 03	USC	2-1	2/1	1/0	6/13	3/4	2/5	0/0	13/10	1/1	0/0	0/2
Sep 08	Saint Louis	1-1	1/1	1/1	17/9	9/4	5/12	0/0	14/8	0/0	0/0	3/1
Sep 10	TEXAS A&M	1-5	1/5	1/2	8/20	5/10	8/7	0/0	10/9	1/1	0/0	0/0
Sep 15	Utah	1-2	1/2	0/4	19/12	8/7	9/8	0/0	6/13	1/1	0/0	1/0
Sep 18	Brigham Young	2-3	2/3	2/1	10/24	5/11	1/6	0/0	5/7	3/0	1/0	1/3
Sep 22	TCU	0-1	0/1	0/0	6/22	1/6	1/11	0/0	8/11	0/1	1/0	1/2
Sep 24	Texas Tech	1-1	1/1	2/0	14/18	8/2	5/7	0/0	12/17	2/2	0/0	0/5
Sep 29	Iowa State	2-1	2/1	0/1	21/9	9/1	10/5	0/0	9/4	0/0	0/0	1/0
Oct 06	KANSAS STATE	0-1	0/1	0/1	25/5	9/3	9/5	0/0	11/11	1/1	0/0	0/0
Totals		19-19	19/19	16/14	194/181	92/71	79/82	2/0	135/126	12/7	2/0	21/16

Note: Game totals are displayed in the format TEAM/OPPONENT for each category

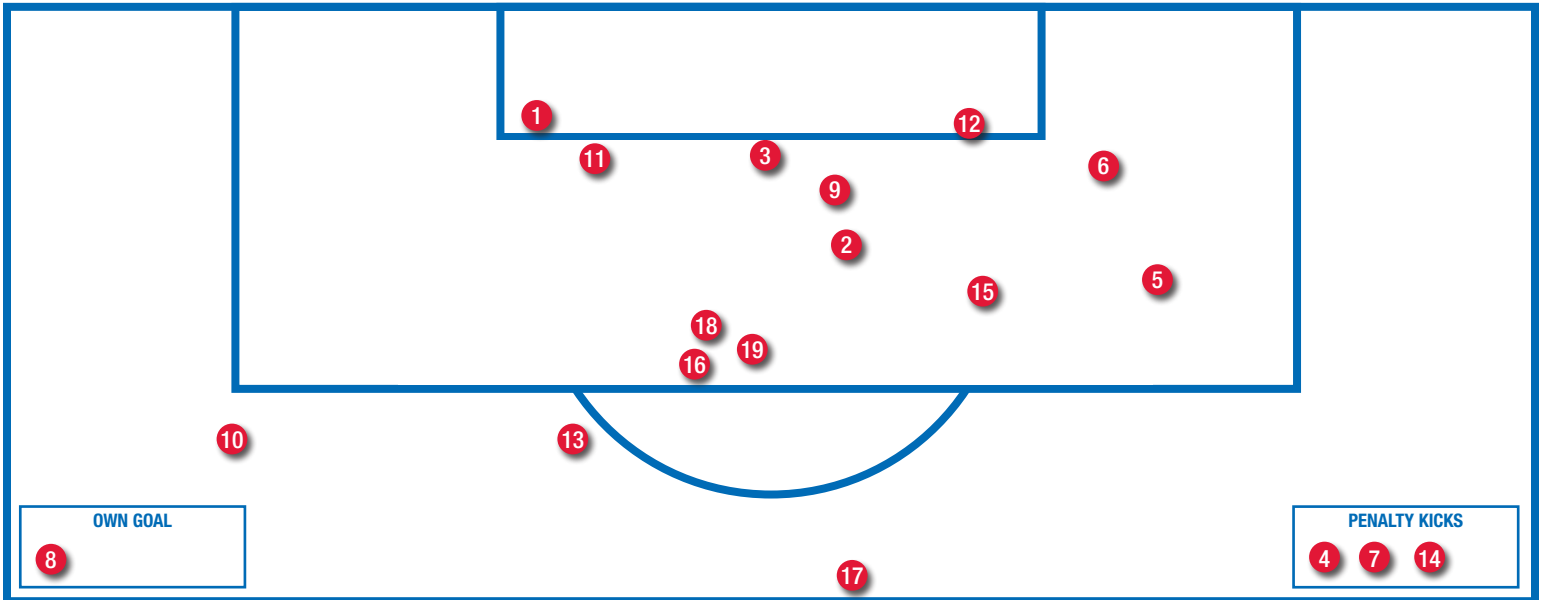
KANSAS GOAL CHART



KANSAS GOAL INFORMATION

- | | |
|--|--|
| 1 - Sophie Maierhofer (Hagan) vs. Central Michigan, 66:23 | 11 - OWN GOAL vs. USC, 68:45 |
| 2 - Sophie Maierhofer (Hagan) vs. Central Michigan, 68:12 | 12 - Katie McClure (Eliasdottir) vs. Saint Louis, 51:30 |
| 3 - Ceri Holland (Heuchan, Schweitzer) vs. Central Michigan, 87:48 ^ | 13 - Grace Hagan (Reina) vs. Texas A&M, 47:12 |
| 4 - Grace Hagan (McClure) vs. Tulsa, 3:22 | 14 - Grace Hagan (unassisted) vs. Utah, 87:37 < |
| 5 - Kayla Morrison (Heuchan) vs. Tulsa, 17:59 ^ | 15 - Eva Eliasdottir (Heuchan) vs. BYU, 2:36 |
| 6 - Hannah Lukinac (Meador) vs. Oregon Sate, 38:44 ^ | 16 - Grace Hagan (Heuchan) vs. BYU, 84:45 |
| 7 - Sophie Maierhofer (Cavalcante) vs. Oregon State, 71:12 | 17 - Sophie Maierhofer (Hopkins, Meador) vs. Texas Tech, 37:34 |
| 8 - Lois Heuchan (McClure) vs. Colorado College, 3:55 | 18 - Katie McClure (unassisted) vs. Iowa State, 64:43 |
| 9 - Grace Hagan (unassisted) vs. Colorado College, 88:59 < | 19 - Isabella Cavalcante (unassisted) vs. Iowa State, 83:32 |
| 10 - Katie McClure (Hagan) vs. USC, 12:14 | |

OPPONENT GOAL CHART



OPPONENT GOAL INFORMATION

- | | |
|---|--|
| 1 - Meg Brandt (Nebraska), 6:52 | 11 - Haylee Cacci Carne (Utah), 17:31* |
| 2 - Elyse Huber (Nebraska), 36:27 | 12 - Hailey Skolmoski (Utah), 32:21 + |
| 3 - Alexis Rienks (Nebraska), 68:27 + | 13 - Nadia Gomes (BYU), 28:07 |
| 4 - Alex Anthony (USC), 73:20 < | 14 - Nadia Gomes (BYU), 40:25 < |
| 5 - Annabelle Copeland (Saint Louis), 63:43 | 15 - Cameron Tucker (BYU), 64:21 |
| 6 - Emily Bates (Texas A&M), 7:36 | 16 - Tara Smith (TCU), 105:16 |
| 7 - Haley Points (Texas A&M), 28:24 < | 17 - Rebekah O'Brien (Texas Tech), 19:33 + |
| 8 - OWN GOAL (Texas A&M), 51:34 | 18 - Klasey Medelberg (Iowa State), 31:22 |
| 9 - McKayla Paulson (Texas A&M), 55:51 * | 19 - Hannah Davis (Kansas State), 46:20 |
| 10 - Cienna Arrieta (Texas A&M), 78:46 | |

Key: + Off free kick, < Penalty Kick, * Off Corner

SINGLE MATCH INDIVIDUAL RECORDS

POINTS

No.	Player	Points
1.	Shannon McCabe (vs. Francis Marion, Oct. 19, 2008)	7
	Caroline Smith (vs. Northwestern, Aug. 29, 2003)	7
3.	Monica Dolinsky (at Missouri, Oct. 15, 2006)	6
	Jessica Smith (vs. Oklahoma State, Oct. 7, 2005)	6
	Caroline Smith (vs. Florida State, Sept. 12, 2003)	6
	Monica Brothers (at Oklahoma State, Sept. 30, 2001)	6
	Natalie Hoogveld (at Colorado, Oct. 14, 2001)	6
	Brianna Valento (vs. St. Louis, Oct. 30, 2001)	6

GOALS

No.	Player	Goals
1.	Shannon McCabe (vs. Francis Marion, Oct. 19, 2008)	3
	Jessica Smith (vs. Oklahoma State, Oct. 7, 2005)	3
	Caroline Smith (vs. Florida State, Sept. 12, 2003)	3
	Caroline Smith (vs. Northwestern, Aug. 29, 2003)	3
	Brianna Valento (vs. St. Louis, Oct. 30, 2001)	3
	Natalie Hoogveld (at Colorado, Oct. 14, 2001)	3
	Monica Brothers (vs. Oklahoma State, Sept. 30, 2001)	3

ASSISTS

No.	Player	Goals
1.	Hilla Rantala (at Oklahoma State, Sept. 30, 2001)	4
2.	Whitney Berry (vs. Texas, Sept. 30, 2011)	3
	Monica Dolinsky (vs. Texas A&M, Nov. 5, 2008)	3
	Jessica Bush (vs. UAB, Sept. 5, 2008)	3
	Hilla Rantala (vs. St. Louis, Oct. 30, 2001)	3
	Melanie Schroeder (vs. UNLV, Sept. 7, 2001)	3

SHOTS

No.	Player	Shots
1.	Caroline Smith (vs. Missouri, Oct. 28, 2005)	12
2.	Caroline Smith (vs. Colorado, Sept. 27, 2002)	10
	Denise Cooke (vs. CMSU, Oct. 13, 1995)	10

SHOTS ON GOAL

No.	Player	SOG
1.	Caroline Smith (vs. Missouri, Oct. 28, 2005)	7
2.	Caroline Smith (at Mississippi State, Sept. 8, 2002)	6
3.	Ingrid Vidal (at Missouri, Oct. 21, 2011)	5
	Jessica Smith (vs. Oklahoma State, Oct. 7, 2005)	5
	Caroline Smith (vs. UC Irvine, Sept. 16, 2005)	5
	Caroline Smith (vs. Baylor, Oct. 3, 2004)	5
	Nicole Cauzillo (vs. Texas Tech, Oct. 1, 2004)	5
	Caroline Smith (vs. Colorado, Sept. 27, 2002)	5
	Monica Brothers (vs. North Texas, Aug. 31, 2001)	5

SAVES

No.	Player	Saves
1.	Betsy Pollard (at Texas Tech, Oct. 3, 1999)	16
2.	Kat Liebetrau (at Georgia, Aug. 29, 2010)	15
	Laura Rohde (at Mississippi, Oct. 29, 1999)	15
	Jen Fecke (vs. UTEP, Oct. 6, 1996)	15
5.	Betsy Pollard (at Georgia, Sept. 17, 1999)	14
	Betsy Pollard (at Utah, Sept. 3, 1999)	14
	Jen Fecke (at Baylor, Sept. 14, 1997)	14

INDIVIDUAL STREAKS

Consecutive Matches w/ a Point	.9
(Hilla Rantala, Aug. 31-Oct. 5, 2001)	
Consecutive Matches w/ a Goal	.5 (twice)
(Liana Salazar, Aug. 22 - Sept. 5 2014)	
(Hilla Rantala, Sept. 1-Sept. 23, 2001)	
Consecutive Matches w/ an Assist	.4
(Whitney Berry, Sept. 27-Oct. 9, 2009)	
Consecutive Matches w/ a GWG	.3 (twice)
(Jessica Bush, Oct. 13-Oct. 20, 2006)	
(Ashley Williams Oct. 3- Oct. 10, 2014)	
Consecutive Shutouts	.5
(Meghan Miller, Aug. 28-Sept. 9, 2004)	

OPPONENT HIGHS

Points	7
(Anna Caniglia, Nebraska, Oct. 23, 2009)	
Goals	3 (nine times)
Last: (Anna Caniglia, Nebraska, Oct. 23, 2009)	
Assists	3
(Kristen Koop, Texas A&M, Sept. 13, 1996)	
(Sandy Smith, Nebraska, Sept. 22, 1995)	
Shots	13
(Courtney Saunders, Baylor, Oct. 2, 1998)	
Shots on Goal	6
(Becky Nelson, Oklahoma, Oct. 24, 2003)	
Saves	16
(Amanda Vandervort, Wyoming, Aug. 29, 1999)	

Single Match Team Records

Points	.19
(vs. Francis Marion, Oct. 19, 2008)	
Goals	7
(vs. Francis Marion, Oct. 19, 2008)	
Assists	6 (four times)
(at Texas Tech, Oct. 14, 2005)	
(vs. Creighton, Nov. 12, 2004)	
(vs. Texas Tech, Oct. 1, 2004)	
(vs. Colorado, Sept. 27, 2002)	
Shots	36
(vs. Michigan, Aug. 26, 2005)	
Shots on Goal	20
(vs. Wyoming, Aug. 29, 1999)	
Saves	16
(at Texas Tech, Oct. 3, 1999)	
Shots Allowed	.45
(at Nebraska, Sept. 22, 1995)	
Shots on Goal Allowed	.19
(at Nebraska, Oct. 15, 1999)	
Fewest Shots	0
(at Virginia, Sept. 19, 1997)	
Fewest Shots on Goal	.0 (twice)
(vs. West Virginia, Nov. 6, 2013,	
at Virginia, Sept. 19, 1997)	
Corner Kicks	.21
(vs. Baylor, Sept. 23, 2005)	
Fouls	.25
(at Oklahoma State, Oct. 9, 1998)	
Goals (In Defeat)	.4
(vs. Nebraska, Oct. 23, 2009 [L, 4-7])	
Goals (Both Teams)	.11
(vs. Nebraska, Oct. 23, 2009 [L, 4-7])	
Goals Allowed	.8 (twice)
(at Nebraska, Oct. 15, 1999)	
(at Nebraska, Sept. 22, 1995)	
Goals Allowed (In Victory)	.3 (three times)
(vs. Duke, Sept. 10, 2006 [W, 4-3])	
(at Oklahoma State, Sept. 30, 2001 [W, 5-3])	
(vs. Colorado, Sept. 28, 1997 [W, 4-3])	
First Half Goals	.4
(vs. Central Missouri State, Oct. 18, 2002)	
Second Half Goals	.5
(vs. Francis Marion, Oct. 19, 2008)	
Margin of Victory	.7
(vs. Francis Marion, Oct. 19, 2008 [W, 7-0])	
Margin of Defeat	.7 (twice)
(at Nebraska, Oct. 15, 1999 [1-8, L])	
(at Nebraska, Sept. 22, 1995 [1-8, L])	
Quickest Goal	:0:18
(Caroline Kastor, at Colorado, Oct. 25, 2010)	
Quickest Goal Allowed	:0:11
(Whitney Palmer, Oklahoma, Oct. 10, 2010)	
Quickest Goal (Second Half)	45:11
(Shayna Teutsch, at UTEP, Oct. 6, 1996)	
Quickest Goal Allowed (Second Half)	45:39
(Katy Lindenmuth, Wisconsin, Aug. 28, 2005)	
Quickest Goal (Overtime)	91:55
(Kim Boyer, vs. Missouri State, Sept. 18, 2007)	
Quickest Goal Allowed (Overtime)	92:03
(Kasey Langdon, Oklahoma St., Oct. 10, 2008)	
Shortest Span Between Goals	:0:15
(Lindsey Horner, Carmel Kaplinger vs. Iowa State, Sept. 29, 2000)	
Shortest Span Between Goals Allowed	:0:14
(Katie Baruth and Carol Ditch, Texas, Sept. 15, 1996)	
Shortest Span Between Goals (Both Teams)	:0:08
(KayAnne Gammersall, Duke and Holly Gault, Kansas, Sept. 10, 2006)	
Attendance (Home)	2,514
(vs. Kansas State, Oct. 6, 2017)	
Attendance (Away)	5,205
(at Saint Louis, Sept. 8, 2017)	

SINGLE SEASON RECORDS

POINTS

No.	Player	Points
1.	.Caroline Smith (2003) (19 goals, 3 assists)	.41
2.	.Caroline Smith (2004) (11 goals, 10 assists)	.32
	.Hilla Rantala (2001) (10 goals, 12 assists)	.32
4.	.Liana Salazar (2014) (13 goals, 4 assists)	.30
5.	.Whitney Berry (2011) (8 goals, 13 assists)	.29
6.	.Ingrid Vidal (2011) (11 goals, 6 assists)	.28
	.Monica Dolinsky (2008) (9 goals, 10 assists)	.28
8.	.Emily Cressy (2009) (12 goals, 3 assists)	.27
	.Caroline Smith (2002) (12 goals, 3 assists)	.27
10.	.Caroline Smith (2005) (9 goals, 8 assists)	.26

GOALS

No.	Player	Goals
1.	.Caroline Smith (2003)	.19
2.	.Liana Salazar (2014)	.13
3.	.Emily Cressy (2009)	.12
	.Caroline Smith (2002)	.12
5.	.Caroline Kastor (2012)	.11
	.Ingrid Vidal (2011)	.11
	.Caroline Smith (2004)	.11
8.	.Hilla Rantala (2001)	.10
9.	.Monica Dolinsky (2008)	.9
	.Shannon McCabe (2008)	.9
	.Caroline Smith (2005)	.9
	.Monica Brothers (2001)	.9

GAME-WINNING GOALS

No.	Player	GWG
1.	.Caroline Smith (2003)	.7
2.	.Caroline Kastor (2012)	.5
	.Emily Cressy (2009)	.5
	.Rachel Gilfillan (2004)	.5
5.	.Liana Salazar (2014)	.4
	.Ashley Williams (2014)	.4
	.Ingrid Vidal (2011)	.4
	.Emily Cressy (2008)	.4
	.Shannon McCabe (2008)	.4
	.Jessica Bush (2006)	.4
	.Caroline Smith (2002)	.4
	.Monica Brothers (2001)	.4

ASSISTS

No.	Player	Assists
1.	.Whitney Berry (2011)	.13
2.	.Hilla Rantala (2001)	.12
3.	.Monica Dolinsky (2009)	.10
	.Monica Dolinsky (2008)	.10
	.Caroline Smith (2004)	.10
6.	.Whitney Berry (2009)	.9
7.	.Caroline Smith (2005)	.8
	.Melanie Schroeder (2000)	.8
	.Meghann Haven (1999)	.8
10.	.Ali Kimura (2014)	.7
	.Whitney Berry (2012)	.7
	.Caroline Kastor (2011)	.7
	.Jessica Bush (2008)	.7
	.Holly Gault (2006)	.7
	.Lauren Williams (2004)	.7

SHOTS

No.	Player	Shots
1.	.Caroline Smith (2005)	.98
2.	.Caroline Smith (2004)	.92
3.	.Whitney Berry (2011)	.85
	.Caroline Smith (2003)	.85
5.	.Monica Dolinsky (2008)	.79
6.	.Emily Cressy (2009)	.73
7.	.Monica Dolinsky (2009)	.71
8.	.Denise Cooke (1995)	.68
9.	.Whitney Berry (2012)	.66
10.	.Whitney Berry (2010)	.65

SHOTS ON GOAL

No.	Player	SOG
1.	.Caroline Smith (2003)	.46
2.	.Caroline Smith (2004)	.45
3.	.Caroline Smith (2005)	.43
4.	.Emily Cressy (2009)	.42
5.	.Whitney Berry (2011)	.41
6.	.Monica Dolinsky (2008)	.37
7.	.Caroline Kastor (2012)	.32
	.Caroline Smith (2002)	.32
9.	.Whitney Berry (2012)	.30
	.Hilla Rantala (2001)	.30

* - Individual shots on goal kept since 1999

MINUTES PLAYED (FIELD)

No.	Player	Minutes
1.	.Estelle Johnson (2008)	.2,110
2.	.Shelby Williamson (2009)	.2,012
3.	.Estelle Johnson (2009)	.1,987
4.	.Kayla Morrison (2016)	.1,985
5.	.Afton Sauer (2004)	.1,981
6.	.Kayla Morrison (2015)	.1,977
7.	.Morgan Williams (2015)	.1,963
8.	.Geneva Magness (2009)	.1,958
9.	.Lauren Jackson (2009)	.1,916
10.	.Afton Sauer (2007)	.1,911

* - Individual minutes kept since 2004

MINUTES PLAYED (KEEPERS)

No.	Player	Minutes
1.	.Meghan Miller (2003)	.2,281
2.	.Maddie Dobyms (2015)	.2,074
2.	.Meghan Miller (2004)	.2,060
3.	.Colleen Quinn (2007)	.1,952
4.	.Julie Hanley (2008)	.1,899

SAVES

No.	Player	Saves
1.	.Jen Fecke (1996)	.150
2.	.Jen Fecke (1997)	.147
3.	.Betsy Pollard (1999)	.125
4.	.Kat Liebetrau (2010)	.113
5.	.Meghan Miller (2003)	.111

GOALS AGAINST AVG. (MINIMUM 1,000 MIN.)

No.	Player	GAA
1.	.Meghan Miller (2004) (13 GA, 2,061 min.)	.057
2.	.Kaitlyn Stroud (2014) (14 GA, 1,722 min.)	.073
3.	.Meghan Miller (2003) (19 GA, 2,281 min.)	.075
4.	.Maddie Dobyms (2016) (14 GA, 1,554 min.)	.081
5.	.Julie Hanley (2006) (19 GA, 1,738 min.)	.098
6.	.Kat Liebetrau (2012) (14 GA, 1,184 min.)	.106

SAVE PERCENTAGE (MINIMUM 1,000 MIN.)

No.	Player	Save Pct.
1.	.Meghan Miller (2004) (13 GA, 96 saves)	.881
2.	.Meghan Miller (2003) (19 GA, 111 saves)	.854
3.	.Kaitlyn Stroud (2014) (14 GA, 77 saves)	.846
4.	.Betsy Pollard (1999) (29 GA, 125 saves)	.812
5.	.Kaitlyn Stroud (2013) (25 GA, 107 saves)	.811

SHUTOUTS

No.	Player	Shutouts
1.	.Meghan Miller (2004)	.11
2.	.Meghan Miller (2003)	.10
3.	.Kaitlyn Stroud (2014)	.8
4.	.Julie Hanley (2006)	.7
5.	.Maddie Dobyms (2015)	.6

WINS

No.	Player	Wins
1.	.Meghan Miller (2004)	.18
	.Meghan Miller (2003)	.18
3.	.Kaitlyn Stroud (2014)	.14
4.	.Julie Hanley (2008)	.13
	.Meghan Miller (2001)	.13
6.	.Julie Hanley (2006)	.11

CAREER RECORDS

POINTS

No.	Player	Pts.
1.	.Caroline Smith (2002-05)	126 (51 goals, 24 assists)
2.	.Whitney Berry (2009-12)	78 (23 goals, 32 assists)
3.	.Monica Dolinsky (2006-09)	76 (23 goals, 30 assists)
4.	.Liana Salazar (2011-15)	68 (28 goals, 12 assists)
	.Rachel Gilfillan (2001-04)	68 (26 goals, 16 assists)
6.	.Caroline Kastor (2010-13)	66 (26 goals, 14 assists)
7.	.Ashley Williams (2012-15)	52 (21 goals, 10 assists)
	.Emily Cressy (2008-10)	52 (23 goals, 6 assists)
9.	.Jessica Bush (2005-08)	51 (13 goals, 14 assists)
	.Monica Brothers (2001-04)	51 (19 goals, 13 assists)

GOALS

No.	Player	Goals
1.	.Caroline Smith (2002-05)	51
2.	.Liana Salazar (2011-15)	28
3.	.Caroline Kastor (2010-13)	26
	.Rachel Gilfillan (2001-04)	26
5.	.Whitney Berry (2009-12)	23
	.Emily Cressy (2008-10)	23
	.Monica Dolinsky (2006-09)	23
8.	.Ashley Williams (2012-15)	21
9.	.Monica Brothers (2001-04)	19
10.	.Natalie Hoogveld (1999-2001)	17

GAME-WINNING GOALS

No.	Player	GWG
1.	.Caroline Smith (2002-05)	14
2.	.Emily Cressy (2008-10)	11
3.	.Ashley Williams (2012-15)	10
	.Rachel Gilfillan (2001-04)	10
5.	.Monica Brothers (2001-04)	8
6.	.Liana Salazar (2011-15)	7
	.Caroline Kastor (2010-13)	7
	.Monica Dolinsky (2006-09)	7
	.Jessica Bush (2005-08)	7
10.	.Jamie Fletcher (2011-14)	6
	.Shannon McCabe (2006-09)	6

ASSISTS

No.	Player	Assists
1.	.Whitney Berry (2009-12)	32
2.	.Monica Dolinsky (2006-09)	30
3.	.Caroline Smith (2002-05)	24
4.	.Jessica Bush (2005-08)	21
5.	.Holly Gault (2003-06)	19
	.Hilla Rantala (1999-2001)	19
7.	.Amy Geha (2001-04)	17
	.Melanie Schroeder (1998-2001)	17
9.	.Rachel Gilfillan (2001-04)	16
10.	.Meghann Haven (1997-2000)	15

SHOTS

No.	Player	Shots
1.	.Caroline Smith (2002-05)	333
2.	.Whitney Berry (2009-12)	267
3.	.Monica Dolinsky (2006-09)	226
4.	.Jamie Fletcher (2011-14)	206
5.	.Liana Salazar (2011-15)	194
6.	.Rachel Gilfillan (2001-04)	175
7.	.Caroline Kastor (2010-13)	159
8.	.Ashley Williams (2012-15)	154
9.	.Jessica Bush (2005-08)	150
10.	.Emily Cressy (2008-10)	142

SHOTS ON GOAL

No.	Player	SOG
1.	.Caroline Smith (2002-05)	166
2.	.Whitney Berry (2009-12)	113
3.	.Monica Dolinsky (2006-09)	96
4.	.Rachel Gilfillan (2001-04)	92
5.	.Liana Salazar (2011-15)	86
6.	.Jamie Fletcher (2011-14)	79
7.	.Emily Cressy (2008-10)	78
8.	.Caroline Kastor (2010-13)	77
9.	.Ashley Williams (2012-15)	74
10.	.Jessica Bush (2005-08)	70

GAMES PLAYED (FIELD)

No.	Player	Games
1.	.Amy Geha (2001-04)	88
2.	.Rachel Gilfillan (2001-04)	87
	.Lauren Williams (2001-04)	87
4.	.Estelle Johnson (2006-09)	85
	.Holly Gault (2003-06)	85
	.Monica Brothers (2001-04)	85
7.	.Lacey Novak (2003-06)	84
	.Stacy Leeper (2001-04)	84
9.	.Liana Salazar (2011-15)	83
	.Kim Boyer (2006-09)	83
	.Monica Dolinsky (2006-09)	83
	.Jessica Bush (2005-08)	83
	.Afton Sauer (2004-07)	83
	.Jessica Smith (2002-05)	83

GAMES STARTED (FIELD)

No.	Player	Games
1.	.Estelle Johnson (2006-09)	83
	.Afton Sauer (2004-07)	83
3.	.Liana Salazar (2011-15)	82
	.Whitney Berry (2009-12)	82
	.Shelby Williamson (2009-12)	82
	.Jessica Bush (2005-08)	82
	.Holly Gault (2003-06)	82
8.	.Tayler Estrada (2013-16)	80
9.	.Caroline Smith (2002-05)	79
10.	.Kayla Morrison (2014-17)	77
11.	.Jamie Fletcher (2011-14)	76
12.	.Monica Dolinsky (2006-09)	75
	.Amy Geha (2001-04)	75
	.Jackie Dowell (1995-98)	75

MINUTES PLAYED (FIELD)*

No.	Player	Minutes
1.	.Estelle Johnson (2006-09)	7,470
2.	.Afton Sauer (2004-07)	7,459
3.	.Shelby Williamson (2009-12)	7,232
4.	.Liana Salazar (2011-15)	6,933
5.	.Kayla Morrison (2014-Present)	6,808
6.	.Whitney Berry (2009-12)	6,739
7.	.Tayler Estrada (2013-16)	6,578
8.	.Missy Geha (2005-08)	6,416
9.	.Jamie Fletcher (2011-14)	6,337
10.	.Jessica Bush (2005-08)	6,307

* Minutes played became an official stat in 2004

GAMES PLAYED (KEEPERS)

No.	Player	Games
1.	.Meghan Miller (2001-04)	88
2.	.Julie Hanley (2005-09)	65
3.	.Kaitlyn Stroud (2010-14)	63
4.	.Maddie Dobyns (2014-Present)	54
	.Kat Liebetrau (2009-12)	54
6.	.Jen Fecke (1996-98)	53

SAVES

No.	Player	Saves
1.	.Jen Fecke (1996-98)	375
2.	.Meghan Miller (2001-04)	362
3.	.Kaitlyn Stroud (2010-2014)	281
4.	.Kat Liebetrau (2009-12)	228
	.Julie Hanley (2005-09)	228

GOALS AGAINST AVG. (MIN. 2,000 MIN.)

No.	Player	GAA
1.	.Meghan Miller (2001-04)	0.98 (85 GA, 7,836 min.)
2.	.Maddie Dobyns (2014-Present)	1.03 (56 GA, 4,898 min.)
3.	.Kaitlyn Stroud (2010-14)	1.21 (75 GA, 5,582 min.)
4.	.Julie Hanley (2005-09)	1.32 (81 GA, 5,515 min.)
5.	.Colleen Quinn (2004-07)	1.35 (44 GA, 2,923 min.)

SAVE PERCENTAGE (MIN. 100 SHOTS FACED)

No.	Player	Save Pct.
1.	.Betsy Pollard (1996-99)814 (29 GA, 127 saves)
2.	.Meghan Miller (2001-04)810 (85 GA, 362 saves)
3.	.Kaitlyn Stroud (2010-14)789 (75 GA, 281 saves)
4.	.Colleen Quinn (2004-07)781 (44 GA, 157 saves)
5.	.Jen Fecke (1996-98)773 (110 GA, 375 saves)
6.	.Maddie Dobyns (2014-Present)767 (56 GA, 184 saves)

SHUTOUTS

No.	Player	Shutouts
1.	.Meghan Miller (2001-04)	28
2.	.Julie Hanley (2005-09)	16
3.	.Maddie Dobyns (2014-Present)	14
4.	.Kaitlyn Stroud (2010-14)	13
5.	.Kat Liebetrau (2009-12)	12

WINS

No.	Player	Wins
1.	.Meghan Miller (2001-04)	60
2.	.Julie Hanley (2005-09)	36
3.	.Kaitlyn Stroud (2010-14)	32
4.	.Maddie Dobyns (2014-Present)	27
5.	.Kat Liebetrau (2009-12)	23

THE LAST TIME...

TEAM

Home Win	2-1 vs. USC, Sept. 3, 2017
Home Loss.....	0-1 vs. Kansas State, Oct. 6, 2017
Home Tie	1-1 vs. Oklahoma State, Oct. 9, 2016
Away Win.....	2-1 at Iowa State, Sept. 29, 2017
Away Loss	0-1 at TCU, Sept. 22, 2017
Away Tie.....	1-1 (2 OT) at Texas Tech, Sept. 24, 2017
Neutral Win.....	1-0 (2OT) vs. Missouri, Nov. 13, 2016
Neutral Loss	0-2 vs. North Carolina, Nov. 18, 2016
Neutral Tie	1-1 (2 OT) vs. Arizona, Sept. 6, 2013
OT Win.....	1-0 (2OT) vs. Missouri, Nov. 13, 2016
OT Loss	0-1 (2OT) at Nebraska, Sept. 2, 2016
Played 2 OTs	1-1 (2OT) at Texas Tech, Sept. 24, 2017
Big 12 Win	2-1 at Iowa State, Sept. 29, 2017
Big 12 Loss.....	0-1 vs. Kansas State, Oct. 6, 2017
Big 12 Tie	1-1 at Texas Tech, Sept. 24, 2017
Scored 0 Goals	vs. Kansas State, Oct. 6, 2017
Scored 1 Goal	at Texas Tech, Sept. 24, 2017
Scored 2 Goals	at Iowa State, Sept. 29, 2017
Scored 3 Goals	vs. Central Michigan, Aug. 20, 2017
Scored 4 Goals	vs. Iowa State, Oct. 4, 2015
Score 5+ Goals.....	5 vs. North Colorado, Oct. 26, 2012
Allowed 0 Goals	vs. Colorado College, Sept. 1, 2017
Allowed 1 Goal.....	vs. Kansas State, Oct. 6, 2017
Allowed 2 Goals	at Utah, Sept. 15, 2017
Allowed 3 Goals	at BYU, Sept. 18, 2017
Allowed 4 Goals	at Arizona State, Sept. 8, 2013
Allowed 5+ Goals	5 vs. Texas A&M, Sept. 10, 2017
Amassed 20+ Shots	25 vs. Kansas State, Oct. 6, 2017
Amassed 30+ Shots	35 vs. Iowa State, Oct. 24, 2014
Allowed 20+ Shots	(22) TCU, Sept. 22, 2017
Allowed 30+ Shots	(33) Texas, Nov. 5, 2004
Amassed 10+ Shots on Goal.....	11 vs. Central Michigan, Aug. 20, 2017
Amassed 15+ Shots on Goal.....	15 vs. Iowa State, Oct. 24, 2014
Allowed 10+ Shots on Goal.....	11 by BYU, Sept. 18, 2017
Allowed 15+ Shots on Goal.....	20 by Georgia, Aug. 29, 2010
Amassed 10+ Corner Kicks	10 at Iowa State, Sept. 29, 2017
Allowed 10+ Corner Kicks	11 at TCU, Sept. 22, 2017
Called for 15+ Fouls	15 vs. Oklahoma, Oct. 21, 2016
Called for 25+ Fouls	25 vs. Oklahoma State, Oct. 9, 1998
Opponent Called for 15+ Fouls	(17) Texas Tech, Sept. 24, 2017
Opponent Called for 25+ Fouls	(27) Oklahoma State, Oct. 9, 2016
Scored 1 Penalty Kick.....	at Utah, Sept. 15, 2017
Scored 2 Penalty Kicks	vs. Texas Tech, Sept. 23, 2016
Allowed 1 Penalty Kick.....	vs. BYU, Sept. 18, 2017
Allowed 2 Penalty Kicks.....	Oral Roberts, Sept. 27, 2009

INDIVIDUAL

Hat Trick	Shannon McCabe vs. Francis Marion (Oct. 23, 2008)
Multi-Goal Match	(2) Sophie Maierhofer vs. Central Michigan (Aug. 20, 2017)
2 Assists	Lois Heuchan vs. BYU (Sept. 18, 2017)
3 Assists.....	Whitney Berry vs. Texas (Sept. 30, 2011)
3 Points	Grace Hagan vs. Pittsburgh (Sept. 9, 2016)
5+ Points.....	(5) Liana Salazar at Iowa State (Oct. 4, 2015)
8+ Shots	(8) Ashley Williams vs. South Dakota State (Sept. 25, 2015)
10+ Shots	(12) Caroline Smith vs. Missouri (Oct. 28, 2005)
5+ Shots on Goal.....	(5) Ingrid Vidal at Missouri (Oct. 21, 2011)
Scored Penalty Kick	Grace Hagan at Utah (Sept. 15, 2017)
Missed Penalty Kick.....	Liana Salazar vs. Texas Tech (Nov. 8, 2015)
10+ Saves.....	(11) Kaitlyn Stroud vs. Oklahoma (Nov. 1, 2013)
Shutout.....	Maddie Dobyys vs. Colorado College (Sept. 1, 2017)
Red Card	Hannah Lukinac at TCU (Sept. 22, 2017)
INDIVIDUAL OPPONENT	
Hat Trick	Anna Canniglia, Nebraska (Oct. 23, 2009)
Multi-Goal Match	(2) Nadia Gomes, BYU (Sept. 18, 2017)
2 Assists	Megan Buckingham, North Carolina (Nov. 18, 2016)
3+ Assists	(3) Kristen Kopp, Texas A&M (Sept. 13, 1996)
3 Points	Haylee Cacciacarne, Utah (Sept. 15, 2017)
5+ Points.....	(5) Amanda Hill, West Virginia (Oct. 16, 2015)
8+ Shots	(8) Nadia Gomes, BYU (Sept. 18, 2017)
10+ Shots	(13) Courtney Saunders, Baylor (Oct. 2, 1998)
5+Shots on Goal.....	(5) Cameron Tucker, BYU (Sept. 18, 2017)
Scored Penalty Kick.....	Nadia Gomes, BYU (Sept. 18, 2017)
Missed Penalty Kick.....	Paula Leblic, Oregon State (Aug. 27, 2017)
10+ Saves.....	(13) Andrea Swanson, Iowa State (Oct. 24, 2014)
Shutout.....	Miranda Larkin, Kansas State (Oct. 6, 2017)
Red Card	Kassidie Stade, Oklahoma (Nov. 1, 2013)

BOX SCORES

1

#22 NEBRASKA 3, KANSAS 0
AUG. 18, 2017 | LAWRENCE, KAN. | ROCK CHALK PARK

Nebraska (1-0-0) vs. Kansas (0-1-0)
Date: Aug 18, 2017 • Attendance: 737
Weather: Clear, 85F, Wind SSW 2mph

Nebraska	Sh	SO	G	A	Fo	Min
gk 25 Corder, Aubrei	-	-	-	-	-	90
d 5 Miramontez, Sinclair	-	-	-	-	-	90
f 7 Uveges, Savannah	1	-	-	-	-	53
m 8 Hanson, Haley	2	2	-	1	-	84
m 9 Pujado, Theresa	1	1	-	1	-	53
f 14 Loebel, Michaela	1	-	-	1	-	39
d 17 Bueli, Caroline	1	-	-	-	-	90
m 20 Reinhard, Sami	-	-	-	-	-	68
m 22 Peterson, Alli	-	-	-	1	-	90
f 28 Ochoa, Brenna	-	-	-	-	-	84
m 32 Brandt, Meg	2	2	1	-	-	75
-- Substitutes --						
4 McClanahan, Amanda	1	1	-	-	-	6
13 Rienks, Alexis	2	1	1	-	-	39
15 Hilton, Amanda	-	-	-	-	-	26
16 Cincotta, Emilee	1	-	-	-	-	37
19 Cooke, Natalie	-	-	-	-	-	8
26 Huber, Elyse	1	1	1	-	-	52
29 McKinney, Hannah	-	-	-	-	-	1
Totals	13	8	3	4	4	

# Goalkeepers	Min	GA	Saves
25 Corder, Aubrei	90:00	0	2

Shots by period	1	2	Total
Nebraska	6	7	13
Kansas	6	2	8

Corner kicks	1	2	Total
Nebraska	0	1	1
Kansas	0	0	0

Scoring summary:

No.	Time	Team	Goal scorer	Assist	Description
1.	6:52	NEB	Brandt, Meg (1)	Loebel, Michaela	
2.	36:27	NEB	Huber, Elyse (1)	Hanson, Haley	8 crossed to 26 for the goal
3.	68:27	NEB	Rienks, Alexis (1)	Pujado, Theresa	header off header into goal
				Peterson, Alli	

Cautions and ejections:
YC-KU #20 (66:25)

Win-Corder, Aubrei (1-0-0). Loss-Dobyns, Maddie (0-1-0).
Stadium: Rock Chalk Park
Officials: Referee: Nima Saghafi; Asst. Referee: Luis Ahumada; Jamie Willis;
Alt. Official: Mike Lavergne; Timekeeper: Erin Penning; Scorer: Theresa Kurtz
Offsides: Nebraska 0, Kansas 5.

Goals by period	1	2	Total
Nebraska	2	1	3
Kansas	0	0	0

Kansas	Sh	SO	G	A	Fo	Min
gk 00 Dobyns, Maddie	-	-	-	-	-	90
f 2 Heuchan, Lois	3	1	-	-	-	84
f 3 Hopkins, Amari	-	-	-	-	-	46
m 6 Lukinac, Hannah	-	-	-	-	-	58
f 12 McClure, Katie	2	-	-	-	-	80
m 15 Holland, Ceri	3	1	-	-	-	76
d 19 Eliasdottir, Eva	-	-	-	-	-	90
d 20 Morrison, Kayla	-	-	-	-	-	90
d 21 Cavalcante, Isabella	-	-	-	-	-	63
d 26 Merrick, Addisyn	-	-	-	-	-	82
m 27 Maierhofer, Sophie	-	-	-	-	-	74
-- Substitutes --						
9 Meador, Madison	-	-	-	-	-	42
13 Castro, Kathryn	-	-	-	-	-	22
14 Schweitzer, Alex	-	-	-	-	-	27
17 Christie, Taylor	-	-	-	-	-	7
24 Reina, Elise	-	-	-	-	-	14
25 Hagan, Grace	-	-	-	-	-	45
Totals	8	2	0	0	9	

# Goalkeepers	Min	GA	Saves
00 Dobyns, Maddie	90:00	3	5

Saves by period	1	2	Total
Nebraska	2	0	2
Kansas	2	3	5

Fouls	1	2	Total
Nebraska	2	2	4
Kansas	2	7	9

2

KANSAS 3, CENTRAL MICHIGAN 0
AUG. 20, 2017 | LAWRENCE, KAN. | ROCK CHALK PARK

Central Michigan (0-1-1) vs. Kansas (1-1-0)
Date: Aug 20, 2017 • Attendance: 573
Weather: Clear, 93F, Wind ESE 7mph

Central Michigan	Sh	SO	G	A	Fo	Min
gk 20 REED, Zoie	-	-	-	-	-	90
f 3 PELAFAS, Lexi	5	3	-	-	-	75
d 4 MITCHELL, Sarah	-	-	-	-	-	85
m 9 MAGNAN, Sheila	-	-	-	-	-	55
d 12 ZIMMERMAN, Taylor	-	-	-	-	-	15
d 12 CARLSON, Mary	-	-	-	-	-	90
m 13 MAGNAN, Shannon	1	-	-	-	-	90
f 15 COSTNER, Madison	-	-	-	-	-	71
m 16 POGARCH, Madison	1	-	-	-	-	90
m 17 MANN, Riley	-	-	-	-	-	50
d 25 BEETCHER, Savanna	-	-	-	-	-	90
-- Substitutes --						
19 CARLSON, Haddie	-	-	-	-	-	25
22 BELSITO, Natalie	-	-	-	-	-	5
24 RADEMACHER, Jamie	1	-	-	-	-	40
27 BROUGH, Devyn	-	-	-	-	-	43
28 VIAZANKO, Ally	-	-	-	-	-	60
33 ROODBEEN, Kayla	-	-	-	-	-	14
Totals	8	3	0	0	4	

# Goalkeepers	Min	GA	Saves
20 REED, Zoie	90:00	3	8

Shots by period	1	2	Total
Central Michigan	4	4	8
Kansas	15	7	22

Corner kicks	1	2	Total
Central Michigan	2	2	4
Kansas	5	2	7

Scoring summary:

No.	Time	Team	Goal scorer	Assist	Description
1.	66:23	KU	Maierhofer, Sophie (1)	Hagan, Grace	ball crossed into box, hit in at far post
2.	68:12	KU	Maierhofer, Sophie (2)	Hagan, Grace	two passes into box, kicked in at left post
3.	87:48	KU	Holland, Ceri (1)	Heuchan, Lois	header off header into goal
				Schweitzer, Alex	

Cautions and ejections:

Win-Dobyns, Maddie (1-1-0). Loss-REED, Zoie (0-1-1).
Stadium: Rock Chalk Park
Officials: Referee: Marco Vega; Asst. Referee: Emily Fletcher; Katherine Bates;
Alt. Official: Manuel Ortiz; Timekeeper: Erin Penning; Scorer: Brad Gilbert;
Offsides: Central Michigan 1, Kansas 1.

Goals by period	1	2	Total
Central Michigan	0	0	0
Kansas	0	3	3

Kansas	Sh	SO	G	A	Fo	Min
gk 00 Dobyns, Maddie	-	-	-	-	-	90
f 2 Heuchan, Lois	2	2	-	1	-	66
m 6 Lukinac, Hannah	1	-	-	-	-	57
f 12 McClure, Katie	2	1	-	-	-	59
m 15 Holland, Ceri	4	1	1	-	-	75
d 19 Eliasdottir, Eva	1	-	-	-	-	73
d 20 Morrison, Kayla	-	-	-	-	-	90
d 21 Cavalcante, Isabella	2	1	-	-	-	66
f 25 Hagan, Grace	1	1	2	-	-	79
d 26 Merrick, Addisyn	-	-	-	-	-	90
m 27 Maierhofer, Sophie	5	2	2	-	-	59
-- Substitutes --						
3 Hopkins, Amari	2	2	-	-	-	43
7 Hall, Avery	-	-	-	-	-	13
9 Meador, Madison	1	-	-	-	-	43
13 Castro, Kathryn	1	1	-	-	-	33
14 Schweitzer, Alex	-	-	-	-	-	15
17 Christie, Taylor	-	-	-	-	-	12
24 Reina, Elise	-	-	-	-	-	26
Totals	22	11	3	4	4	

# Goalkeepers	Min	GA	Saves
00 Dobyns, Maddie	90:00	0	3

Saves by period	1	2	Total
Central Michigan	5	3	8
Kansas	1	2	3

Fouls	1	2	Total
Central Michigan	3	1	4
Kansas	3	1	4

3

KANSAS 2, TULSA 0
AUG. 25, 2017 | TULSA, OKLA. | HURRICANE STADIUM

Kansas (2-1) vs. Tulsa (0-2-1)
Date: Aug 25, 2017 • Attendance: 422
Weather: 83 degrees, winds ESE @ 7 mph, cloudy

Kansas	Sh	SO	G	A	Fo	Min
gk 00 Dobyns, Maddie	-	-	-	-	-	90
f 2 Heuchan, Lois	3	3	-	1	-	73
d 6 Lukinac, Hannah	1	-	-	-	-	77
f 12 McClure, Katie	1	-	-	1	-	73
d 15 Holland, Ceri	2	-	-	-	-	58
d 19 Eliasdottir, Eva	-	-	-	-	-	80
d 20 Morrison, Kayla	2	1	1	-	-	90
d 21 Cavalcante, Isabella	-	-	-	-	-	75
f 25 Hagan, Grace	1	1	1	-	-	73
d 26 Merrick, Addisyn	-	-	-	-	-	90
mf 27 Maierhofer, Sophie	1	1	-	-	-	54
-- Substitutes --						
3 Hopkins, Amari	1	1	-	-	-	34
9 Meador, Madison	-	-	-	-	-	31
13 Castro, Kathryn	2	-	-	-	-	32
14 Schweitzer, Alex	-	-	-	-	-	20
17 Christie, Taylor	-	-	-	-	-	17
24 Reina, Elise	-	-	-	-	-	25
Totals	14	7	2	2	10	

# Goalkeepers	Min	GA	Saves
00 Dobyns, Maddie	90:00	0	3

Shots by period	1	2	Total
Kansas	6	8	14
Tulsa	2	4	6

Corner kicks	1	2	Total
Kansas	5	5	10
Tulsa	2	2	4

Scoring summary:

No.	Time	Team	Goal scorer	Assist	Description
1.	3:22	KU	Hagan, Grace (1)	McClure, Katie	On a pass from 12, shot from 15 yards up lower left corner.
2.	17:59	KU	Morrison, Kayla (1)	Heuchan, Lois	Headed by 20 off defender and in. Played on corner kick.

Cautions and ejections:

Win-Dobyns, Maddie (2-1). Loss-DEFER, Rebecca (0-2-1).
Stadium: Hurricane Stadium
Officials: Referee: Reza Namavar; Asst. Referee: Matt Trotter; Ronald Poulsen;
Alt. Official: Jack Dammill; Timekeeper: TU AMR; Scorer: TU AMR;
Offsides: Kansas 2, Tulsa 0.

Goals by period	1	2	Total
Kansas	2	0	2
Tulsa	0	0	0

Tulsa	Sh	SO	G	A	Fo	Min
gk 00 Dobyns, Maddie	-	-	-	-	-	90
d 7 HOOVER, Danielle	-	-	-	-	-	50
mf 9 MCADAMS, McKenzie	1	1	-	-	-	90
f 10 WHITLOW, Reagan	-	-	-	-	-	46
mf 11 CREASON, Amanda	-	-	-	-	-	90
mf 13 DAKE, Tana	2	1	-	-	-	83
mf 15 HECKMAN, Ashlyn	-	-	-	-	-	28
f 17 WILLIAMS, Anna	-	-	-	-	-	22
d 18 FOUTS, Annabeth	-	-	-	-	-	90
f 23 GUTHRIE, Addysyn	-	-	-	-	-	53
mf 27 CHLUMOVA, Alzbeta	-	-	-	-	-	43
-- Substitutes --						
3 MORRIS, Valiree	-	-	-	-	-	50
4 HUSTAVA, Ashlan	-	-	-	-	-	34
5 HOLMES, Christina	-	-	-	-	-	45
6 KAISER, Alyssa	-	-	-	-	-	40
14 THUN-BLANKENSHIP,	3	1	-	-	-	32
20 OPIE, Eden	-	-	-	-	-	24
21 DUBACH, Avere	-	-	-	-	-	28
22 MARTIN, Anna	-	-	-	-	-	52
Totals	6	3	0	0	10	

# Goalkeepers	Min	GA	Saves
1 DEFER, Rebecca	90:00	2	4
TM TEAM	0:00	0	1

Saves by period	1	2	Total
Kansas	1	2	3
Tulsa	0	5	5

Fouls	1	2	Total
Kansas	3	7	10
Tulsa	5	5	10

4

KANSAS 2, OREGON STATE 0
AUG. 27, 2017 | CORVALLIS, ORE. | HURRICANE STADIUM

Kansas (3-1-0) vs. Oregon State (1-1-2)
Date: Aug 27, 2017 • Attendance: 335
Weather:

Kansas	Sh	SO	G	A	Fo	Min
gk 00 Dobyns, Maddie	-	-	-	-	-	90
f 2 Heuchan, Lois	3	1	-	-	-	67
d 6 Lukinac						

BOX SCORES

5

KANSAS 2, COLORADO COLLEGE 0
SEPT. 1, 2017 | LAWRENCE, KAN. | ROCK CHALK PARK

Colorado College (1-3-0) vs. Kansas (4-1-0)
Date: Sep 01, 2017 • Attendance: 599
Weather: Mostly Cloudy, 77F, Wind ESE 4mph

Colorado College					
Po #	Player	Sh	SO	G	A Fo Min
gk 1	ODOM, Jade	-	-	-	- 90
d 2	MILLIET, Lauren	4	1	-	- 90
d 3	BASOM, Ali	-	-	-	- 90
d 4	LAPOINTE, AnneSoph	-	-	-	- 90
m 5	SULLIVAN, Kelli	-	-	-	- 90
m 6	HEMBLETT, Johanna	-	-	-	- 56
f 8	MCDONALD, Katie	-	-	-	- 43
m 11	STESNEY, Madeline	-	-	-	- 15
m 15	PRILLWITZ, Riley	1	1	-	- 39
m 18	WILT, Jenna	-	-	-	- 56
d 22	WEAVER, Camille	-	-	-	- 90
-- Substitutes --					
7	CONLON, Rae	2	1	-	- 20
13	LYONS, Sarah	-	-	-	- 50
14	RICHTER, Clara	-	-	-	- 53
21	BURGO, Hannah	-	-	-	- 44
24	HELGESSION, Moa	-	-	-	- 75
Totals					
		7	3	0	0 6

#	Goalkeepers	Min	GA	Saves
1	ODOM, Jade	90:00	2	6

Shots by period	1	2	Total
Colorado College	5	2	7
Kansas	7	3	10

Corner kicks	1	2	Total
Colorado College	0	1	1
Kansas	2	2	4

No.	Time	Team	Goal scorer	Assist	Description
1.	3:55	KU	Heuchan, Lois (1)	McClure, Katie	Played to corner of 6 yrd box, shot in to f
2.	88:59	KU	Hagan, Grace (2)	Penalty kick	

Cautions and ejections:
YC-KU #6 (72:05)

Win-Dobyns, Maddie (4-1-0). Loss-ODOM, Jade (1-2-0).
Stadium: Rock Chalk Park
Officials: Referee: Esteban Rosano; Asst. Referee: Gloria Martinez; Tony Guiliano;
Alt. Official: Ryan Cook; Timekeeper: Erin Penning; Scorer: Brad Gilbert;
Offsides: Colorado College 2, Kansas 3.

Goals by period	1	2	Total
Colorado College	0	0	0
Kansas	1	1	2

Kansas					
Po #	Player	Sh	SO	G	A Fo Min
gk 00	Dobyns, Maddie	-	-	-	- 90
f 2	Heuchan, Lois	1	1	1	- 66
m 6	Lukinac, Hannah	-	-	-	- 74
f 12	McClure, Katie	4	3	1	- 67
m 15	Holland, Ceri	2	1	-	- 75
d 19	Eliasdottir, Eva	-	-	-	- 84
d 20	Morrison, Kayla	1	1	-	- 90
d 21	Cavalcante, Isabella	-	-	-	- 68
f 25	Hagan, Grace	1	1	1	- 81
d 26	Merrick, Addisyn	-	-	-	- 90
m 27	Maierhofer, Sophie	-	-	-	- 62
-- Substitutes --					
3	Hopkins, Amari	-	-	-	- 31
9	Meador, Madison	-	-	-	- 36
11	Williams, Maia	1	1	-	- 9
13	Castro, Kathryn	-	-	-	- 22
14	Schweitzer, Alex	-	-	-	- 2
17	Christie, Taylor	-	-	-	- 16
24	Reina, Elise	-	-	-	- 28
Totals					
		10	8	2	1 12

#	Goalkeepers	Min	GA	Saves
00	Dobyns, Maddie	90:00	0	3

Saves by period	1	2	Total
Colorado College	4	2	6
Kansas	2	1	3

Fouls	1	2	Total
Colorado College	0	6	6
Kansas	6	6	12

6

KANSAS 2, #7 USC 1
SEPT. 3, 2017 | LAWRENCE, KAN. | ROCK CHALK PARK

USC (2-1-0) vs. Kansas (5-1-0)
Date: Sep 03, 2017 • Attendance: 1270
Weather: Clear, 85F, Wind SE 5mph

USC					
Po #	Player	Sh	SO	G	A Fo Min
gk 1	Collins, Kaylie	-	-	-	- 90
d 3	Haidet, Jessica	1	-	-	- 27
d 7	Bingham, Julia	1	-	-	- 90
m 10	DeMelo, Savannah	-	-	-	- 54
d 11	Molen, Nicole	1	1	-	- 90
f 13	McKeown, Tara	1	-	-	- 80
f 19	Sladek, Sydney	-	-	-	- 74
d 23	Prisock, Ally	-	-	-	- 90
m 26	Bruder, Samantha	-	-	-	- 45
m 30	Johnson, Sydney	-	-	-	- 40
m 35	Pruitt, Leah	1	1	-	- 70
-- Substitutes --					
9	Jones, Arlie	-	-	-	- 23
15	Woodward, Jalen	1	-	-	- 63
16	Rooney, Amanda	1	-	-	- 44
21	Anthony, Alex	5	2	1	- 70
25	Trincerri, Samantha	-	-	-	- 6
36	Myers, Sydney	1	-	-	- 35
Totals					
		13	4	1	0 10

#	Goalkeepers	Min	GA	Saves
1	Collins, Kaylie	90:00	2	1

Shots by period	1	2	Total
USC	4	9	13
Kansas	5	1	6

Corner kicks	1	2	Total
USC	2	3	5
Kansas	1	1	2

No.	Time	Team	Goal scorer	Assist	Description
1.	12:14	KU	McClure, Katie (1)	Hagan, Grace	played across box, chipped in from 5 yrd
2.	68:45	KU	OWN GOAL	(unassisted)	own goal
3.	73:20	USC	Anthony, Alex (2)	Penalty kick	

Cautions and ejections:
YC-USC #19 (50:27); YC-KU #12 (81:32)

Win-Dobyns, Maddie (5-1-0). Loss-Collins, Kaylie (2-1-0).
Stadium: Rock Chalk Park
Officials: Referee: Katja Koroleva; Asst. Referee: Deleana Quan; Danny Thornberry;
Alt. Official: Jack Feldman; Timekeeper: Erin Penning; Scorer: Brad Gilbert;
Offsides: USC 2, Kansas 0.

Goals by period	1	2	Total
USC	0	1	1
Kansas	1	1	2

Kansas					
Po #	Player	Sh	SO	G	A Fo Min
gk 00	Dobyns, Maddie	-	-	-	- 90
f 2	Heuchan, Lois	-	-	-	- 78
m 6	Lukinac, Hannah	-	-	-	- 70
f 12	McClure, Katie	1	1	1	- 58
m 15	Holland, Ceri	2	-	-	- 70
d 19	Eliasdottir, Eva	-	-	-	- 90
d 20	Morrison, Kayla	1	-	-	- 90
d 21	Cavalcante, Isabella	-	-	-	- 77
f 25	Hagan, Grace	1	1	1	- 70
d 26	Merrick, Addisyn	-	-	-	- 90
m 27	Maierhofer, Sophie	1	-	-	- 50
-- Substitutes --					
3	Hopkins, Amari	-	-	-	- 29
9	Meador, Madison	-	-	-	- 36
11	Williams, Maia	-	-	-	- 10
13	Castro, Kathryn	-	-	-	- 27
14	Schweitzer, Alex	-	-	-	- 17
17	Christie, Taylor	-	-	-	- 25
24	Reina, Elise	-	-	-	- 13
TM TEAM					
		-	1	1	- 13
Totals					
		6	3	2	1 13

#	Goalkeepers	Min	GA	Saves
00	Dobyns, Maddie	90:00	1	2
TM TEAM		0:00	0	1

Saves by period	1	2	Total
USC	1	0	1
Kansas	0	3	3

Fouls	1	2	Total
USC	6	4	10
Kansas	5	8	13

7

#19 KANSAS 1, SAINT LOUIS 1 (2OT)
SEPT. 8, 2017 | ST. LOUIS, MO. | HERMANN STADIUM

Kansas (5-1-1) vs. Saint Louis (6-0-1)
Date: Sep 08, 2017 • Attendance: 5205
Weather: Clear, 80, light east wind

Kansas					
Po #	Player	Sh	SO	G	A Fo Min
g 00	Dobyns, Maddie	-	-	-	- 110
f 2	Heuchan, Lois	4	2	-	- 82
m 6	Lukinac, Hannah	1	-	-	- 102
f 12	McClure, Katie	2	2	1	- 79
m 15	Holland, Ceri	4	3	-	- 105
d 19	Eliasdottir, Eva	-	-	-	- 101
d 20	Morrison, Kayla	1	1	-	- 110
d 21	Cavalcante, Isabella	-	-	-	- 98
f 25	Hagan, Grace	1	1	-	- 86
d 26	Merrick, Addisyn	-	-	-	- 110
m 27	Maierhofer, Sophie	1	1	-	- 71
-- Substitutes --					
3	Hopkins, Amari	-	-	-	- 24
9	Meador, Madison	-	-	-	- 52
11	Williams, Maia	-	-	-	- 19
17	Christie, Taylor	3	1	-	- 40
24	Reina, Elise	-	-	-	- 21
Totals					
		17	9	1	1 14

#	Goalkeepers	Min	GA	Saves
00	Dobyns, Maddie	110:00	1	3

Shots by period	1	2	OT	O2	Total
Kansas	6	7	4	0	17
Saint Louis	4	2	2	1	9

Corner kicks	1	2	OT	O2	Total
Kansas	2	2	1	0	5
Saint Louis	6	3	2	1	12

No.	Time	Team	Goal scorer	Assist	Description
1.	51:30	KU	McClure, Katie (2)	Eliasdottir, Eva	Long pass into box; shot near post
2.	63:43	SLU	COPELAND, Annabelle (1)	SEITZER, Alyssa	Pass from center; shot far post

Cautions and ejections:

Kansas-Dobyns, Maddie (5-1-1). Saint Louis-NIEHAUS, Mary (6-0-1).
Stadium: Hermann Stadium
Officials: Referee: Dule Djurasevic; Asst. Referee: Mark Boyko; Colin Pressy;
Alt. Official: Gary Huber; Timekeeper: SLU Media Relations; Scorer: SLU Media Relations;
Offsides: Kansas 3, Saint Louis 1.

Goals by period	1	2	OT	O2	Total
Kansas	0	1	0	0	1
Saint Louis	0	1	0	0	1

Saint Louis					
Po #	Player	Sh	SO	G	A Fo Min
g 1	NIEHAUS, Mary	-	-	-	- 110
d 2	KLUG, Alli	-	-	-	- 110
d 3	REAM, Molly	-	-	-	- 110
m 4	POKORNY, Maddie	1	-	-	- 88
m 5	REIMER, Courtney	1	-	-	- 106
d 7	SEITZER, Alyssa	3	1	-	- 103
d 12	HALVERSON, Brionna	-	-	-	- 96
m 14	LAVELLE, Evie	-	-	-	- 46
m 15	PETIT, Olivia	1	-	-	- 96
f 16	SANDS, Lindsay	-	-	-	- 41
d 19	PALAZZOLO, Isabella	-	-	-	- 74
-- Substitutes --					
8	FARLEY, Emma	-	-	-	- 39
9	TONDIL, Lauren	-	-	-	- 64
10	NIXON, Megan	-	-	-	- 17
20	COPELAND, Annabelle	1	1	1	- 34
24	COX, Haley	-	-	-	- 12
28	PETERSON, Julia	2	2	-	- 64
Totals					
		9	4	1	1 8

#	Goalkeepers	Min	GA	Saves
1	NIEHAUS, Mary	110:00	1	8

Saves by period	1	2	OT	O2	Total
Kansas	2	0	0	1	3
Saint Louis	2	4	2	0	8

Fouls	1	2	OT	O2	Total
Kansas	5	8	0	1	14
Saint Louis	2	3	2	1	8

8

#10 TEXAS A&M 5, #19 KANSAS 1
SEPT. 10, 2017 | LAWRENCE, KAN. | ROCK CHALK PARK

Texas A&M (4-1-1) vs. Kansas (5-2-1)
Date: Sep 10, 2017 • Attendance: 541
Weather: Sunny, 84F, Wind 9mph SE

Texas A&M					
Po #	Player	Sh	SO	G	A Fo Min
gk 0	Morche, Cosette	-	-	-	- 90
m 2	Bates, Emily	6	3	1	- 61
f 5	Crabtree, Brittany	2	-	-	- 36
m 9	Piper, Grace	1	-	-	- 71
m 10	Malherbe, Stephanie	2	-	-	- 90
d 14	Lopez, Jimena	1	-	-	- 90
m 17	Arrieta, Cienna	1	1	1	- 56
m 18	McCain, Addie	1	-	-	- 90
d 20	Paulson, McKayla	1	1	-	- 90
d 24	Walton, Callyn	-	-	-	- 90
d 99	Al				

BOX SCORES

9

#25 UTAH 2, KANSAS 1

SEPT. 15, 2017 | SALT LAKE CITY, UTAH | UTE FIELD

Kansas (5-3-1) vs. Utah (5-2-1)
Date: Sep 15, 2017 • Attendance: 1786
Weather:

Kansas	Po #	Player	Sh	SO	G	A	Fo	Min
gk	00	Dobyns, Maddie	-	-	-	-	-	90
f	2	Heuchan, Lois	3	1	-	-	-	77
m	6	Lukinac, Hannah	-	-	-	-	-	42
m	9	Meador, Madison	-	-	-	-	-	45
f	12	McClure, Katie	2	-	-	-	-	73
m	15	Holland, Ceri	5	4	-	-	-	90
d	19	Eliasdottir, Eva	-	-	-	-	-	90
d	20	Morrison, Kayla	-	-	-	-	-	90
d	21	Cavalcante, Isabella	1	1	-	-	-	79
f	25	Hagan, Grace	3	1	1	-	-	86
d	26	Merrick, Addisyn	-	-	-	-	-	90
-- Substitutes --								
	3	Hopkins, Amari	2	-	-	-	-	25
	11	Williams, Maia	-	-	-	-	-	4
	13	Castro, Kathryn	1	-	-	-	-	35
	14	Schweitzer, Alex	-	-	-	-	-	17
	17	Christie, Taylor	2	1	-	-	-	36
	24	Reina, Elise	-	-	-	-	-	21
Totals			19	8	1	0	6	

#	Goalkeepers	Min	GA	Saves
00	Dobyns, Maddie	90:00	2	5

Shots by period	1	2	Total
Kansas	5	14	19
Utah	6	6	12

Corner kicks	1	2	Total
Kansas	2	7	9
Utah	1	7	8

Scoring summary:

No.	Time	Team	Goal scorer	Assist	Description
1.	17:31	UTAH	Haylee Cacciaccarne (1)	Lulu Borges	corner headed off post, rebound sent back scored at left post
2.	32:21	UTAH	Hailey Skolmoski (7)	Eden Jacobsen	28 FK headed on by 17 and 19 scores at r on tap in
3.	87:37	KU	Hagan, Grace (4)	Natalee Wells	Penalty kick

Cautions and ejections:
YC-KU #25 (50:14); YC-UTAH #3 (58:55)

Win-Carly Nelson. Loss-Dobyns, Maddie.
Stadium: Ute Field
Officials: Referee: Hamed Sadeghi; Asst. Referee: Paul Gutke; Sergio Navas;
Alt. Official: Joshua Mills;
Offsides: Kansas 1, Utah 0.

Goals by period	1	2	Total
Kansas	0	1	1
Utah	2	0	2

Utah	Po #	Player	Sh	SO	G	A	Fo	Min
gk	00	Carly Nelson	-	-	-	-	-	90
d	3	Lulu Borges	1	-	-	-	-	90
d	5	Janie Kearl	-	-	-	-	-	87
d	9	Aleea Gwerder	1	-	-	-	-	90
m	12	Holly Daugirda	1	-	-	-	-	75
m	14	Paola Van der Veen	-	-	-	-	-	76
f	15	Natalie Vukic	-	-	-	-	-	59
m	17	Haylee Cacciaccarne	1	1	1	-	-	90
f	19	Hailey Skolmoski	6	4	1	-	-	77
m	24	Eden Jacobsen	1	1	-	-	-	64
d	28	Natalee Wells	-	-	-	-	-	90
-- Substitutes --								
	8	Kristin Fairbairn	-	-	-	-	-	13
	11	Max Flom	-	-	-	-	-	42
	20	Tatum Thornton	-	-	-	-	-	3
	21	Ireland Dunn	-	-	-	-	-	31
	22	Elia Ballstaedt	1	1	-	-	-	14
Totals			12	7	2	4	13	

#	Goalkeepers	Min	GA	Saves
00	Carly Nelson	90:00	1	7

Saves by period	1	2	Total
Kansas	2	3	5
Utah	2	5	7

Fouls	1	2	Total
Kansas	4	2	6
Utah	4	9	13

10

BYU 3, KANSAS 2

SEPT. 18, 2017 | PROVO, UTAH | SOUTH FIELD

Kansas (5-4-1) vs. Brigham Young (2-4-3)
Date: Sep 18, 2017 • Attendance: 1070
Weather:

Kansas	Po #	Player	Sh	SO	G	A	Fo	Min
gk	00	Dobyns, Maddie	-	-	-	-	-	90
f	2	Heuchan, Lois	1	-	-	-	-	81
m	6	Lukinac, Hannah	-	-	-	-	-	43
m	9	Meador, Madison	-	-	-	-	-	66
f	12	McClure, Katie	1	1	-	-	-	83
m	15	Holland, Ceri	1	1	-	-	-	64
d	19	Eliasdottir, Eva	1	1	1	-	-	78
d	20	Morrison, Kayla	-	-	-	-	-	90
d	21	Cavalcante, Isabella	1	-	-	-	-	66
f	25	Hagan, Grace	1	1	1	-	-	72
d	26	Merrick, Addisyn	-	-	-	-	-	90
-- Substitutes --								
	3	Hopkins, Amari	-	-	-	-	-	12
	11	Williams, Maia	-	-	-	-	-	10
	13	Castro, Kathryn	-	-	-	-	-	20
	14	Schweitzer, Alex	1	1	-	-	-	20
	17	Christie, Taylor	2	-	-	-	-	55
	24	Reina, Elise	1	-	-	-	-	50
Totals			10	5	2	2	5	

#	Goalkeepers	Min	GA	Saves
00	Dobyns, Maddie	90:00	3	8

Shots by period	1	2	Total
Kansas	8	2	10
Brigham Young	12	12	24

Corner kicks	1	2	Total
Kansas	0	1	1
Brigham Young	3	3	6

Scoring summary:

No.	Time	Team	Goal scorer	Assist	Description
1.	2:36	KU	Eliasdottir, Eva	Heuchan, Lois	From left corner of box to top right post
2.	28:07	BYU	GOMES, Nadia (2)	(unassisted)	Penalty kick
3.	40:25	BYU	GOMES, Nadia (3)	(unassisted)	Penalty kick
4.	64:21	BYU	TUCKER, Cameron (2)	MATHEWS, Madie	Left corner from middle of box
5.	84:45	KU	Hagan, Grace	Heuchan, Lois	Right corner on open net with keeper out

Cautions and ejections:
YC-KU #24 (35:55); YC-KU #12 (49:45); YC-KU #15 (61:46); RC-KU #TM (73:28)

Win-CLARK, Hannah (2-4-3). Loss-Dobyns, Maddie (5-4-1).
Stadium: South Field
Officials: Referee: Allen Chapman; Asst. Referee: Allen Pickett; Brandon Major;
Alt. Official: Blake Griffiths; Timekeeper: Jerry Freestone; Scorer: Darrin Bates;
Offsides: Kansas 1, Brigham Young 3.

Goals by period	1	2	Total
Kansas	1	1	2
Brigham Young	2	1	3

Brigham Young	Po #	Player	Sh	SO	G	A	Fo	Min
gk	11	CLARK, Hannah	-	-	-	-	-	90
d	2	ISOM, Taylor	-	-	-	-	-	90
f	5	FLAKE, Elise	4	1	-	-	-	63
f	6	GOMES, Nadia	8	3	2	-	-	90
m	7	BOWMAN, Danika	2	-	-	-	-	73
m	10	BOWEN, Bizzy	2	1	-	-	-	62
f	12	WALKER, Avery	1	-	-	-	-	44
m	19	BRABY, Lizzy	1	-	-	-	-	34
d	23	BINGHAM, Rachel	-	-	-	-	-	63
d	24	NEY, Stephanie	-	-	-	-	-	90
d	28	JEFFERSON, Alyssa	-	-	-	-	-	47
-- Substitutes --								
	4	STEINER, Brittain	-	-	-	-	-	17
	14	GUINN, Josie	-	-	-	-	-	27
	20	TUCKER, Cameron	5	5	1	-	-	38
	21	SIDDOWAY, Madie	1	-	-	-	-	44
	25	WELCH, Brynlee	1	-	-	-	-	43
	26	MATHEWS, Madie	1	1	-	-	-	74
Totals			24	11	3	1	7	

#	Goalkeepers	Min	GA	Saves
11	CLARK, Hannah	90:00	2	3

Saves by period	1	2	Total
Kansas	1	7	8
Brigham Young	3	0	3

Fouls	1	2	Total
Kansas	3	2	5
Brigham Young	4	3	7

11

TCU 1, KANSAS 0 (20T)

SEPT. 22, 2017 | FORT WORTH, TEXAS | GARVEY ROSENTHAL STADIUM

Kansas (5-5-1, 0-1-0 Big 12) vs. TCU (7-3-0, 1-0-0 Big 12)
Date: Sep 22, 2017 • Attendance: 1154
Weather:

Kansas	Po #	Player	Sh	SO	G	A	Fo	Min
gk	00	Dobyns, Maddie	-	-	-	-	-	105
mf	6	Lukinac, Hannah	-	-	-	-	-	30
f	12	McClure, Katie	-	-	-	-	-	87
mf	15	Holland, Ceri	-	-	-	-	-	74
d	19	Eliasdottir, Eva	1	-	-	-	-	91
d	20	Morrison, Kayla	-	-	-	-	-	105
d	21	Cavalcante, Isabella	-	-	-	-	-	105
mf	24	Reina, Elise	-	-	-	-	-	62
f	25	Hagan, Grace	2	1	-	-	-	101
d	26	Merrick, Addisyn	-	-	-	-	-	105
mf	27	Maierhofer, Sophie	-	-	-	-	-	41
-- Substitutes --								
	2	Heuchan, Lois	1	-	-	-	-	41
	3	Hopkins, Amari	-	-	-	-	-	26
	5	Pesek, Olivia	-	-	-	-	-	4
	9	Meador, Madison	-	-	-	-	-	50
	13	Castro, Kathryn	-	-	-	-	-	22
	14	Schweitzer, Alex	1	-	-	-	-	26
	17	Christie, Taylor	1	-	-	-	-	38
Totals			6	1	0	0	8	

#	Goalkeepers	Min	GA	Saves
00	Dobyns, Maddie	105:16	1	5

Shots by period	1	2	OT	O2	Total
Kansas	3	2	0	1	6
TCU	11	6	3	2	22

Corner kicks	1	2	OT	O2	Total
Kansas	0	1	0	0	1
TCU	5	4	1	1	11

Scoring summary:

No.	Time	Team	Goal scorer	Assist	Description
1.	105:16	TCU	Smith, Tara (2)	(unassisted)	Deflection shot, high upper corner.

Cautions and ejections:
RC-KU #6 (63:38); YC-TCU #6 (80:46)

Win-Lund, Katie (6-1-0). Loss-Dobyns, Maddie (5-5-1).
Stadium: Garvey-Rosenthal
Officials: Referee: Daniel Radford; Asst. Referee: Jennifer Garner; Kalli Terry;
Alt. Official: Robert Mann; Scorer: Brandie Davidson;
Offsides: Kansas 1, TCU 2.

Goals by period	1	2	OT	O2	Total
Kansas	0	0	0	0	0
TCU	0	0	0	1	1

TCU	Po #	Player	Sh	SO	G	A	Fo	Min
gk	24	Lund, Katie	-	-	-	-	-	105
mf	2	Ryan, Yazmeen	5	1	-	-	-	86
d	3	Lue, Cachet	-	-	-	-	-	105
d	6	Djuricek, Tijana	-	-	-	-	-	105
d	8	Owens, Ariana	1	-	-	-	-	105
mf	9	Hill, Kayla	2	1	-	-	-	75
mf	11	Ganter, Allison	2	2	-	-	-	78
f	12	Oliver, McKenzie	1	-	-	-	-	76
d	13	Williams, Ryan	1	-	-	-	-	105
mf	17	Tomasdottir, Karitas	1	-	-	-	-	105
f	22	Heckendorn, Emma	6	-	-	-	-	76
-- Substitutes --								
	5	Eule, Danielle	1	-	-	-	-	27
	10	Christensen, Tayla	-	-	-	-	-	29
	16	Smith, Tara	2	2	1	-	-	43

BOX SCORES

13

KANSAS 2, IOWA STATE 1

SEPT. 29, 2017 | AMES, IOWA | CYCLONE SOCCER COMPLEX

Kansas (6-5-2, 1-1-1 Big 12) vs. Iowa State (2-9-1, 0-3 Big 12)
Date: Sep 29, 2017 • Attendance: 712
Weather: 70 degrees, NE 7 mph

Goals by period	1	2	Total
Kansas	0	2	2
Iowa State	1	0	1

Kansas							
Po #	Player	Sh	SO	G	A	Fo	Min
gk 00	Dobyns, Maddie	-	-	-	-	-	90
f 2	Heuchan, Lois	3	1	-	-	-	77
f 12	McClure, Katie	7	3	1	-	-	86
mf 13	Castro, Kathryn	1	-	-	-	-	54
mf 15	Holland, Ceri	1	-	-	-	-	90
d 19	Eliasdottir, Eva	1	-	-	-	-	90
d 20	Morrison, Kayla	3	2	-	-	-	90
d 21	Cavalcante, Isabella	1	1	1	-	-	90
f 25	Hagan, Grace	2	1	-	-	-	78
d 26	Merrick, Addisyn	-	-	-	-	-	90
mf 27	Maierhofer, Sophie	2	1	-	-	-	85
-- Substitutes --							
3	Hopkins, Amari	-	-	-	-	-	4
5	Pesek, Olivia	-	-	-	-	-	4
6	Lukinac, Hannah	-	-	-	-	-	36
17	Christie, Taylor	-	-	-	-	-	26
Totals		21	9	2	0	9	

Iowa State							
Po #	Player	Sh	SO	G	A	Fo	Min
gk 89	Reyes, Antonia	-	-	-	-	-	90
mf 4	Steil, Emily	2	-	-	-	-	76
d 5	Johnson, Brianna	-	-	-	-	-	90
mf 15	Schultz, McKenna	-	-	-	-	-	57
mf 16	Tasker, Brooke	2	-	-	-	-	85
d 17	Mundt, Merin	-	-	-	-	-	68
f 18	Medelberg, Klasey	4	1	1	-	-	90
d 23	Enga, Jordan	-	-	-	-	-	90
f 24	Cade, Hannah	-	-	-	-	-	90
mf 28	Wagner, Taylor	-	-	-	-	-	47
d 30	Behan, Riley	-	-	-	1	-	68
-- Substitutes --							
9	Sullivan, Shealyn	-	-	-	-	-	44
10	Curtis, Brianna	-	-	-	-	-	5
12	Opfer, Kasey	1	-	-	-	-	57
22	Powell, Courtney	-	-	-	-	-	33
Totals		9	1	1	1	4	

#	Goalkeepers	Min	GA	Saves
00	Dobyns, Maddie	90:00	1	0

#	Goalkeepers	Min	GA	Saves
89	Reyes, Antonia	90:00	2	7

Shots by period	1	2	Total
Kansas	9	12	21
Iowa State	5	4	9

Saves by period	1	2	Total
Kansas	0	0	0
Iowa State	2	5	7

Corner kicks	1	2	Total
Kansas	6	4	10
Iowa State	4	1	5

Fouls	1	2	Total
Kansas	4	5	9
Iowa State	0	4	4

Scoring summary:

No.	Time	Team	Goal scorer	Assist	Description
1.	31:22	ISU	Medelberg, Klasey (3)	Behan, Riley	
2.	64:43	KU	McClure, Katie (3)	(unassisted)	
3.	83:32	KU	Cavalcante, Isabella (1)	(unassisted)	

Cautions and ejections:

Stadium: Cyclone Sports Cmplx
Officials: Referee: Adrian Gonzalez; Asst. Referee: Dan Stupca; Kip Jackson;
Alt. Official: Tom McCulloh; Scorer: Zach Gourley;
Offsides: Kansas 1, Iowa State 0.

14

KANSAS STATE 1, KANSAS 0

OCT. 6, 2017 | LAWRENCE, KAN. | ROCK CHALK PARK

Kansas State (6-6-1, 1-3-0 Big 12) vs. Kansas (6-6-2, 1-2-1 Big 12)
Date: Oct 06, 2017 • Attendance: 2514
Weather: Clear, 75F, Wind S 12mph

Goals by period	1	2	Total
Kansas State	0	1	1
Kansas	0	0	0

Kansas State							
Po #	Player	Sh	SO	G	A	Fo	Min
gk 0	Larkin, Miranda	-	-	-	-	-	90
d 3	Sutter, Haley	1	1	-	-	-	90
d 6	Egan, Morgan	1	-	-	-	-	90
d 9	Kalkofen, Megan	-	-	-	-	-	90
m 14	Zane, Ashley	-	-	-	-	-	79
f 22	Davis, Hannah	1	1	1	-	-	32
d 23	Hall, Laramie	2	1	-	-	-	76
m 29	Mauck, Morgan	-	-	-	-	-	84
d 31	Green, Avery	-	-	-	-	-	57
m 36	Souder, Maddie	-	-	-	-	-	82
f 44	Wagner, Tatum	-	-	-	-	-	69
-- Substitutes --							
2	Fiser, Kelcy	-	-	-	-	-	14
4	Sieperda, Abby	-	-	-	-	-	11
5	Haddock, Krista	-	-	-	-	-	23
19	Baxter, Christina	-	-	-	-	-	31
20	Cramer, Katie	-	-	-	1	-	50
28	Kellogg, Leah	-	-	-	-	-	7
30	Ramos, Brooke	-	-	-	-	-	13
Totals		5	3	1	1	11	

Kansas							
Po #	Player	Sh	SO	G	A	Fo	Min
gk 00	Dobyns, Maddie	-	-	-	-	-	90
f 2	Heuchan, Lois	4	2	-	-	-	90
f 12	McClure, Katie	4	2	-	-	-	69
m 13	Castro, Kathryn	-	-	-	-	-	53
m 15	Holland, Ceri	3	1	-	-	-	90
d 19	Eliasdottir, Eva	1	-	-	-	-	83
d 20	Morrison, Kayla	2	1	-	-	-	90
d 21	Cavalcante, Isabella	-	-	-	-	-	90
f 25	Hagan, Grace	5	2	-	-	-	90
d 26	Merrick, Addisyn	-	-	-	-	-	90
m 27	Maierhofer, Sophie	2	-	-	-	-	53
-- Substitutes --							
3	Hopkins, Amari	-	-	-	-	-	10
6	Lukinac, Hannah	1	-	-	-	-	24
9	Meador, Madison	-	-	-	-	-	10
17	Christie, Taylor	3	1	-	-	-	31
24	Reina, Elise	-	-	-	-	-	13
Totals		25	9	0	0	11	

#	Goalkeepers	Min	GA	Saves
0	Larkin, Miranda	90:00	0	9

#	Goalkeepers	Min	GA	Saves
00	Dobyns, Maddie	90:00	1	2

Shots by period	1	2	Total
Kansas State	4	1	5
Kansas	10	15	25

Saves by period	1	2	Total
Kansas State	3	6	9
Kansas	2	0	2

Corner kicks	1	2	Total
Kansas State	3	2	5
Kansas	1	8	9

Fouls	1	2	Total
Kansas State	6	5	11
Kansas	7	4	11

Scoring summary:

No.	Time	Team	Goal scorer	Assist	Description
1.	46:20	KSU	Davis, Hannah (2)	Cramer, Katie	long ball forward, 22 beat keeper to ball f

Cautions and ejections:

YC-KU #12 (55:10); YC-KSU #20 (55:38)

Win-Larkin, Miranda (6-6-1). Loss-Dobyns, Maddie (6-6-2).
Stadium: Rock Chalk Park
Officials: Referee: Jon Freemon; Asst. Referee: Matt Trotter; Victor Perez;
Alt. Official: Elvis Mahmutovic; Scorer: Brad Gilbert;
Offsides: Kansas State 0, Kansas 0.