

# K-STATE<sup>®</sup>

## WOMEN'S BASKETBALL

950+ ALL-TIME VICTORIES • 25 20-WIN SEASONS  
 • 16 NCAA TOURNAMENT APPEARANCES  
 • 6 WNIT APPEARANCES • 2006 WNIT CHAMPIONS  
 • 10 CONFERENCE TITLES • 12 ALL-AMERICANS  
 • 8 WNBA DRAFT PICKS

### KANSAS STATE AT CENTRAL ARKANSAS

#### 2020-21 SCHEDULE & RESULTS

##### OVERALL RECORD: 1-1

BIG 12: 0-0 | NON-CONFERENCE: 1-1  
 HOME: 1-1 | AWAY: 0-0 | NEUTRAL: 0-0

##### NOVEMBER (1-0)

29 SOUTHERN +  W, 66-51

##### DECEMBER (0-1)

3 (11/12) KENTUCKY % +  L, 60-49  
 5 at Central Arkansas + (Bear Nation Network) 2 p.m.  
 6 UT ARLINGTON + Canceled  
 8 IDAHO STATE +  1 p.m.  
 10 SOUTH DAKOTA STATE +  6:30 p.m.  
 12 OMAHA +  1 p.m.  
 14 KANSAS CITY +  6:30 p.m.  
 18 at Iowa State \* + TBD  
 21 TEXAS \* + 7 p.m.

##### JANUARY (0-0)

2 at Oklahoma \* + TBD  
 5 WEST VIRGINIA \* + 6:30 p.m.  
 10 at Baylor \* + 2 p.m.  
 14 TCU \* + 6:30 p.m.  
 17 OKLAHOMA STATE \* + TBD  
 20 at West Virginia \* + TBD  
 23 at Kansas \* + TBD  
 27 IOWA STATE \* + 6:30 p.m.  
 31 OKLAHOMA \* + TBD

##### FEBRUARY (0-0)

3 at Texas Tech \* + TBD  
 7 BAYLOR \* + TBD  
 10 at TCU \* + TBD  
 13 KANSAS \* + TBD  
 17 at Oklahoma State \* + TBD  
 21 at Texas \* + TBD  
 24 TEXAS TECH \* + 6:30 p.m.

##### MARCH (0-0)

11-14 TBD ^ + TBA

Schedule subject to change | Bold indicates home game | All times Central  
 Opponent Rankings are AP/Coaches | + - Game broadcast on K-State Sports  
 Network and kstatesports.com | % - SEC/Big 12 Challenge | \* - Big 12 game |  
 ^ - Phillips 66 Big 12 Championship (Kansas City, Mo.)



AP  
-  
Coach  
-

1-2, 0-0 SLC

GAME 3  
DECEMBER 5, 2020  
2 p.m.  
Farris Center  
Conway, Ark.



AP  
-  
Coach  
-

1-1, 0-0 BIG 12

- After a cancellation in its original schedule, K-State quickly adjusted and will face Central Arkansas on Saturday afternoon at 2 p.m., in Conway, Arkansas.
- The game will only be available to watch on Bear Nation Network (subscription required) at ucasports.com.
- Prior to this week, the last time K-State had a game canceled off its original schedule was November 26 and 27, 2014, when the Hardwood for Hope tournament in Puerto Vallarta, Mexico, went bankrupt after K-State's opening win over UTEP.
- Saturday's game will begin a stretch of five games in nine days for the Wildcats.
- The Wildcats are led this season by junior **Christianna Carr**, redshirt junior **Rachel Ranke** and sophomore **Ayoka Lee**. Carr is averaging 15.0 points and 4.0 rebounds.
- Ranke continues her climb towards 1,000 career points, as she is averaging 9.5 points, 2.5 rebounds and 2.5 assists.
- Lee is averaging 9.5 points on a .500 field goal percentage, 6.5 rebounds and 2.0 blocks.

#### STARTING 5

Five names, numbers or storylines about K-State women's basketball

##### 1. CARR FROM AFAR

• Junior guard **Christianna Carr** tallied a four 3-point connections against Kentucky. Carr is shooting 7-of-16 (.438) from deep this season and her seven 3-pointers made are her most in a two-game stretch since Nov. 30-Dec. 3, 2019 when she made eight. Carr leads the Big 12 and ranks 33rd in the nation for 3-point field goals made per game (3.5).

##### 2. MACKE IN ACTION

• Junior **Laura Macke** has started consecutive games for the first time in her career. Macke has opened the season with 8.0 points per game on a team-best 63.6 field goal percentage and 3.5 rebounds.

##### 3. RANKE CLIMBS CAREER LIST

• Redshirt junior guard **Rachel Ranke** moved up a spot on the K-State career 3-point field goals made left with her two connections against Kentucky. Ranke has made 177 three-point field goals and passed Missy Decker (1993-97, 176) for eighth.

##### 4. BLOCK PARTY

• K-State has tallied 13 blocks (6.5 bpg) in the first two games this season. Five Wildcats have at least one block this season.

##### 5. LEE A CANDIDATE FOR FOUR NATIONAL AWARDS

• **Ayoka Lee** is a candidate for the 2021 Jersey Mike's Naismith Trophy, the 2021 Wade Trophy, the 2021 Wooden Award and the 2021 Lisa Leslie Award. Lee is averaging 9.5 points on a .500 field goal percentage, 6.5 rebounds and 2.0 blocks.

#### PROBABLE STARTERS (BASED ON PREVIOUS GAME)

##### KANSAS STATE (1-1, 0-0 BIG 12)

No.	Player	Pos.	Yr.	Ht.	HOMETOWN	PPG	RPG	APG	FG%	3FG%	FT%
4	Sydney Goodson	G	Sr.	5-8	Argyle, Texas	3.5	3.5	3.0	.231	.125	.000
13	Laura Macke	F	Jr.	6-2	Baileyville, Kan.	8.0	3.5	1.5	.636	.333	.250
24	Emilee Ebert	G	So.	6-0	Frankfort, Kan.	3.5	3.5	4.0	.500	.333	.000
43	Christianna Carr	G	Jr.	6-1	Manhattan, Kan.	15.0	4.5	1.0	.400	.438	.750
50	Ayoka Lee	C	So.	6-5	Byron, Minn.	9.5	6.5	0.5	.500	.000	.750

Head Coach: **Jeff Mittie** (29th season/7th at K-State) | Career Record: 571-315 (.644); Record at K-State: 117-80 (.594)

##### CENTRAL ARKANSAS (1-2, 0-0 SOUTHLAND)

No.	Player	Pos.	Yr.	Ht.	HOMETOWN	PPG	RPG	APG	FG%	3FG%	FT%
0	Briana Trigg	G/F	Sr.	5-10	Tampa, Fla.	7.3	8.0	1.7	.276	.000	.750
11	Savanna Walker	G	Sr.	5-7	Savannah, Ga.	5.3	2.7	2.3	.240	.000	.800
21	Jayla Cody	F	Fr.	6-1	Valdosta, Ga.	3.7	5.0	0.0	.308	.000	.750
22	Lauryn Mapusua	G	Jr.	5-9	Brisbane, Australia	1.7	2.0	0.3	.167	.167	.000
24	Lucy Ibeh	F	Jr.	6-0	Lagos, Nigeria	9.3	7.3	1.0	.419	.000	.333

Head Coach: **Sandra Rushing** (32nd season/9th season at Central Arkansas) | Career Record: 558-352 (.613); Record at UCA: 155-96 (.618)

#### GAME INFORMATION

##### TELEVISION

Bear Nation Network  
 (Subscription required)

##### RADIO

None

##### LIVE STATS

kstatesports.com

#### NUMBER TO KNOW

8

- K-State will play its eight game all-time in the state of Arkansas on Saturday.
- The Wildcats are 2-5 (.286) all-time in Arkansas, as K-State won at Arkansas State on Nov. 25, 2008 and at Little Rock on Dec. 16, 2018.
- This will be the third straight season K-State has played a game in the state of Arkansas.

##### All-Time Games in Arkansas

Date	Opponent	Result
12/7/19	at Arkansas	L, 81-72
12/16/18	Little Rock	W, 53-47
12/2/09	at Arkansas	L, 60-58
11/25/08	at Arkansas State	W, 69-58
3/11/99	at Arkansas State	L, 83-70#
1/23/96	at Arkansas State	L, 73-64 (ot)
1/2/82	at Arkansas	L, 68-53

# - Postseason WNIT

## BY STATE

## Colorado (1)

Jada Moore (Denver)

## Illinois (2)

Cymone Goodrich (Chicago); Jada Thorpe (Chicago)

## Kansas (4)

Christianna Carr (Manhattan); Emilee Ebert (Frankfort);  
Laura Macke (Baileyville); Ashley Ray (Girard)

## Maryland (2)

Makayla Pippin (Bethesda); Savannah Simmons (Bel Air)

## Minnesota (2)

Ayoka Lee (Byron); Rachel Ranke (Burnsville)

## Texas (1)

Sydney Goodson (Argyle)

## Wisconsin (1)

Taylor Lauterbach (Appleton)

## BY POSITION

## Guards (8)

Christianna Carr; Emilee Ebert; Cymone Goodrich;  
Sydney Goodson; Jada Moore; Rachel Ranke;  
Savannah Simmons; Jada Thorpe

## Forwards (3)

Laura Macke; Makayla Pippin; Ashley Ray

## Center (2)

Taylor Lauterbach; Ayoka Lee

## BY CLASS

## Senior (1)

Sydney Goodson

## Juniors (7)

Christianna Carr; Cymone Goodrich; Laura Macke;  
Makayla Pippin; Rachel Ranke (rs); Ashley Ray (rs);  
Savannah Simmons

## Sophomores (2)

Emilee Ebert; Ayoka Lee

## Freshmen (3)

Taylor Lauterbach; Jada Moore; Jada Thorpe (rs)

(rs) - redshirt

K-STATE WOMEN'S BASKETBALL  
SOCIAL MEDIA DIRECTORY

## TWITTER

K-State WBB	@KStateWBB & #KStateWBB
K-State Athletics	@KStateSports
Jeff Mittie	@JeffMittie
Brian Ostermann	@THECoachO
Chris Carr	@CoachCarr43
Ebony Haliburton	@ebony_kstate
Ebony Gilliam	@ebony_gilliam
Sadie Thramer	@CoachSayT

## INSTAGRAM

@kstatewbb  
@kstatesports

## FACEBOOK

Facebook.com/KStateSports

## 2020-21 K-STATE ROSTER

NO.	NAME	POS.	HT.	YR-EXP.	HOMETOWN (PREVIOUS SCHOOL)
1	Savannah Simmons	G	6-0	Jr.-2L	Bel Air, Md. (The John Carroll School)
2	Cymone Goodrich	G	5-10	Jr.-2L	Chicago, Ill. (South Shore International Prep)
3	Makayla Pippin	F	6-1	Jr.-TR	Indianapolis, Ind. (Central Arizona College)
4	Sydney Goodson	G	5-9	Sr.-TR	Argyle, Texas (Texas Tech)
10	Jada Thorpe	G	5-9	R-Fr.-SQ	Chicago, Ill. (Simeon Career Academy)
12	Rachel Ranke	G	6-1	R-Jr.-2L	Burnsville, Minn. (Eastview HS)
13	Laura Macke	F	6-2	Jr.-2L	Baileyville, Kan. (Nemaha Central HS)
23	Jada Moore	G	5-11	Fr.-HS	Denver, Colo. (Regis Jesuit HS)
24	Emilee Ebert	G	6-0	So.-1L	Frankfort, Kan. (Frankfort HS)
33	Ashley Ray	C	6-4	R-Jr.-2L	Girard, Kan. (Girard HS)
41	Taylor Lauterbach	C	6-7	Fr.-HS	Appleton, Wis. (Appleton West HS)
43	Christianna Carr	G	6-1	Jr.-2L	Manhattan, Kan. (Manhattan HS)
50	Ayoka Lee	C	6-6	So.-1L	Byron, Minn. (Byron HS)

## HEAD COACH

Jeff Mittie (Missouri Western '89 - 7th Season)

## ASSOCIATE HEAD COACH

Brian Ostermann (Wisconsin-La Crosse '88 - 7th Season)

## ASSISTANT COACH

Chris Carr (Argosy University '12 - 5th season)

## ASSISTANT COACH

Ebony Haliburton (Oral Roberts '08 - 4th season)

## COOR. OF RECRUITING OPS

Ebony Gilliam (TCU '04 - 7th Season)

## DIR. OF S-A DEVELOPMENT

Sadie Thramer (Wayne State '16 - 3rd Season)

## DIR. OF VIDEO OPERATIONS

Staci Gregorio (Pacific '10 - 2nd season)

## PRONUNCIATION GUIDE

Emilee Ebert	eb-ERT
Ayoka Lee	a-OAK-uh
Laura Macke	MACK-ee
Rachel Ranke	RANK-ee

Player notes included in player bios on pgs. 11-26

## K-STATE STARTERS

4 | SYDNEY GOODSON  
G | 5-9 | Sr.  
Argyle, Texas

PPG	RPG	APG
3.5	3.5	3.0

13 | LAURA MACKE  
F | 6-2 | Jr.  
Baileyville, Kan.

PPG	RPG	APG
8.0	3.5	1.5

24 | EMILEE EBERT  
G | 6-0 | So.  
Frankfort, Kan.

PPG	RPG	APG
3.5	3.5	4.0

43 | CHRISTIANNA CARR  
G | 6-1 | Jr.  
Manhattan, Kan.

PPG	RPG	APG
15.0	4.5	1.0

50 | AYOKA LEE  
C | 6-6 | So.  
Byron, Minn.

PPG	RPG	BPG
9.5	6.5	2.0

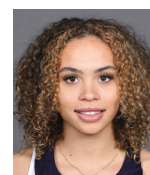
## K-STATE BENCH

1 | SAVANNAH SIMMONS  
G | 6-0 | Jr.  
Bel Air, Md.

PPG	RPG	APG
-	-	-

2 | CYMONE GOODRICH  
G | 5-10 | Jr.  
Chicago, Ill.

PPG	RPG	APG
1.0	1.0	1.0

3 | MAKAYLA PIPPIN  
F | 6-1 | Jr.  
Laurel, Md.

PPG	RPG	APG
0.0	2.0	1.0

10 | JADA THORPE  
G | 5-9 | R-Fr.  
Chicago, Ill.

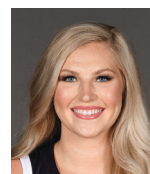
PPG	RPG	APG
0.0	0.0	0.0

12 | RACHEL RANKE  
G | 6-1 | R-Jr.  
Burnsville, Minn.

PPG	RPG	APG
9.5	2.5	2.5

23 | JADA MOORE  
G | 5-11 | Fr.  
Denver, Colo.

PPG	RPG	APG
6.0	3.0	2.0

33 | ASHLEY RAY  
C | 6-4 | R-Jr.  
Girard, Kan.

PPG	RPG	BPG
1.0	1.0	0.5

41 | TAYLOR LAUTERBACH  
C | 6-7 | Fr.  
Appleton, Wis.

PPG	RPG	BPG
3.5	4.0	0.0



# HC | JEFF MITTIE

7TH SEASON AT K-STATE | 29TH SEASON AS A HEAD COACH

## MITTIE'S COACHING STAFF



<< Brian Ostermann  
Associate  
Head Coach



<< Chris Carr  
Assistant Coach



<< Ebony Haliburton  
Assistant Coach

## MITTIE'S CAREER RECORD

- Career: 571-315 (.644) - 29th season
- K-State: 117-80 (.594) - 7th season

**Home:** 349-97 (.783) - career | 75-32 (.701) - at K-State  
**Road:** 156-173 (.474) - career | 31-36 (.463) - at K-State  
**Neutral:** 66-45 (.595) - career | 11-12 (.478) - at K-State

**Longest Winning Streak at K-State:** 9, (Nov. 11 - Dec. 11, 2016)  
**Longest Losing Streak at K-State:** 4 twice, (Jan. 14 - 28, 2015) & (Dec. 30, 2015 - Jan. 13, 2016)

## MITTIE'S TROPHY CASE

- 2010 Mountain West Conference Coach of the Year
- 2010 Mountain West Conference Regular Season Champions
- 2005 Conference USA Tournament Champions
- 2003 Conference USA Tournament Champions
- 2002 Conference USA Coach of the Year
- 2002 Conference USA Regular Season Champions
- 2001 WAC Coach of the Year
- 2001 WAC Regular Season Champions
- 2001 WAC Tournament Champions
- 1995 MIAA Coach of the Year
- 1995 MIAA Regular Season Champions
- 1995 MIAA Tournament Champions
- 1994 MIAA Coach of the Year
- 1994 MIAA Regular Season Champions

## MITTIE BY THE NUMBERS

- .644** - Career winning percentage
- 4** - Associated Press All-Americans he has coached
- 5** - Conference Coach of the Year awards
- 9** - League titles in four different conferences
- 16** - 20-win seasons as a head coach
- 20** - Postseason appearances
- 25** - Winning seasons in 28 years as a head coach
- 58** - Academic All-Conference selections he has coached
- 65** - All-Conference selections he has coached
- 117** - Wins at Kansas State
- 571** - Career wins

## MITTIE AT K-STATE

- Five postseason appearances including three NCAA Tournament appearances
- Two 20-win seasons
- 16 All-Big 12 selections
- Four Big 12 All-Defensive Team honorees
- One Big 12 Freshman of the Year (Ayoka Lee)
- Three Big 12 All-Freshman Team selections
- 2019 U.S. Pan American Games selection (Peyton Williams)
- 31 Academic All-Big 12 selections
- Four Big 12 Scholar-Athlete of the Year recipients
- Six CoSIDA Academic All-District VII honorees
- Two CoSIDA Academic All-American (Shaelyn Martin & Peyton Williams)

## MITTIE IN 7TH SEASON AT K-STATE

- Jeff Mittie, one of the winningest active coaches in NCAA Division I with over 500 career wins, is in his seventh season at the helm of the K-State program in 2020-21.
- Mittie, the ninth head women's basketball coach in K-State history, owns an overall career record of 571-315 (.644) in 29 years as a head coach, including a 117-80 (.594) mark in his time at K-State. He has won 19 or more games in four of his six seasons with K-State.
- With his 117 wins at Kansas State, Mittie ranks fourth for wins at the helm of the K-State program.
- Mittie registered the 550th win of his coaching career, a 75-72 decision at TCU on Feb. 23, 2019.
- In the 2016-17 season, K-State's 23 wins were Mittie's most at the helm of the Wildcats and the most for Mittie since registering 23 in the 2007-08 season at TCU.
- He has averaged 20.4 wins per season and experienced only one losing season in his previous 28 seasons.
- Mittie has 20 postseason appearances in his career (NCAA or WNIT Tournaments), in which he has a combined record of 20-18 (.526).

## MITTIE'S CAREER RECORD VS. 2020-21 OPPONENTS

### Non-Conference Opponents

Opponent	W	L	.Pct.
Southern	2	0	1.000
Kentucky	0	1	.000
Central Arkansas	1	0	1.000
Idaho State	First Meeting		
South Dakota State	0	2	.000
Omaha	6	1	.857
Kansas City	5	0	1.000

### Big 12 Conference Opponents

Opponent	W	L	.Pct.
Baylor	1	22	.043
Iowa State	7	12	.368
Kansas	16	6	.727
Oklahoma	9	15	.375
Oklahoma State	11	9	.550
TCU	7	7	.500
Texas	4	12	.250
Texas Tech	15	4	.789
West Virginia	6	14	.300

## MITTIE YEAR-BY-YEAR RECORD

Year	School	Record	Postseason
2020-21	Kansas State	1-1	
2019-20	Kansas State	16-13	DNP*
2018-19	Kansas State	21-12	NCAA 1st Round
2017-18	Kansas State	18-16	WNIT 3rd Round
2016-17	Kansas State	23-11	NCAA 2nd Round
2015-16	Kansas State	19-13	NCAA 2nd Round
2014-15	Kansas State	19-14	WNIT 2nd Round
2013-14	TCU	18-15	WNIT 1st Round
2012-13	TCU	9-21	--
2011-12	TCU	16-14	--
2010-11	TCU	22-11	WNIT 1st Round
2009-10	TCU	22-9	NCAA 1st Round
2008-09	TCU	20-11	NCAA 1st Round
2007-08	TCU	23-12	WNIT Quarterfinals
2006-07	TCU	21-11	NCAA 1st Round
2005-06	TCU	19-12	NCAA 2nd Round
2004-05	TCU	23-10	NCAA 1st Round
2003-04	TCU	25-7	NCAA 2nd Round
2002-03	TCU	20-14	NCAA 2nd Round
2001-02	TCU	24-7	NCAA 2nd Round
2000-01	TCU	25-8	NCAA 2nd Round
1999-00	TCU	16-14	--
1998-99	Arkansas State	18-14	WNIT Quarterfinals
1997-98	Arkansas State	20-10	--
1996-97	Arkansas State	20-8	--
1995-96	Arkansas State	17-10	--
1994-95	Missouri Western	31-3	NCAA D-II 3rd Place
1993-94	Missouri Western	29-3	NCAA D-II Semifinals
1992-93	Missouri Western	16-11	--
<b>28 Years</b>		<b>571-315 (.644)</b>	<b>20 Postseasons</b>

\* - did not play due to COVID-19 pandemic

## MOST K-STATE CAREER VICTORIES

Wins	Coach	Years
350	Deb Patterson	1996-2014
206	Judy Akers	1968-79
125	Lynn Hickey	1979-84
<b>117</b>	<b>Jeff Mittie</b>	<b>2014-present</b>

# 571

## CAREER WINS

### Big 12 Coaches WBB Career Records

1.	Bill Fennelly, Iowa State	691-327
2.	Kim Mulkey, Baylor	606-101
3.	<b>Jeff Mittie, Kansas State</b>	<b>571-315</b>
4.	Sherri Coale, Oklahoma	501-283
5.	Brandon Schneider, Kansas	457-236
6.	Mike Carey, West Virginia	413-216
7.	Vic Schaeffer, Texas	304-172
8.	Krista Gerlich, Texas Tech	291-147
9.	Raegan Pebley, TCU	275-254
10.	Jim Littell, Oklahoma State	182-111

## SERIES HISTORY vs. CENTRAL ARKANSAS

2-0

- K-State leads the series, 2-0.
- K-State will make its first trip to Conway, Arkansas.
- Head coach Jeff Mittie is 1-0 in his career against Central Arkansas, including a 1-0 mark at K-State.
- The Wildcats are 18-3 against schools from the Southland Conference.

<b>Overall:</b>	K-State leads, 2-0
<b>Mittie vs. Central Arkansas:</b>	1-0
<b>Last Meeting:</b>	Dec. 20, 2018 (H)
<b>Last Result:</b>	K-State won, 70-54
<b>Current Streak:</b>	K-State won 2
<b>Last K-State Win:</b>	Dec. 20, 2018 (H)
<b>at K-State:</b>	2-0
<b>at Central Arkansas:</b>	-
<b>Neutral Site:</b>	-
<b>Last 5 Meetings:</b>	
Dec. 20, 2018	K-State won, 70-54 (H)
Jan. 3, 2009	K-State won, 81-38 (H)

## AT A GLANCE: CENTRAL ARKANSAS

- Central Arkansas (1-2) ended a two-game skid with a 74-70 win at Arkansas-Pine Bluff on Tuesday. The Sugar Bears will host their first home game this season on Saturday.
- On the sideline, Central Arkansas is led by ninth-year head coach Sandra Rushing. The 1986 graduate of Alabama owns a career record of 558-352 (.613) and is 155-96 (.618) during her time in Conway.
- On the floor, the Sugar Bears are led by Jalisa Outlaw and Lucy Ibeh.
- Outlaw leads Central Arkansas with 14.7 points per game and is shooting .467 from beyond the arc (7-of-15).
- Ibeh has started all three games and is second on the team in scoring (9.3 ppg) and second on the glass (7.3 rpg).

## K-STATE ON THIS DATE

**Record:** 14-2 | **Streak:** Won 2 |  
**Last Time:** 2018 - W, vs. Lamar, 73-55 (Manhattan)

## All-Time Games on December 5

Season	h/a/n	Opponent	Score	W/L
2018-19	h	Lamar	73-55	W
2015-16	h	at Chicago State	63-54	W
2010-11	a	at (18) Iowa	68-62	L
2009-10	h	Missouri State	64-60	W
2008-09	h	Alcorn State	80-22	W
2007-08	a	at Green Bay	68-56	L
2006-07	a	at Louisiana Tech	64-61	W
2003-04	h	Sacramento State	94-31	W
2000-01	a	Western Michigan	90-81	W
1998-99	h	San Diego State	77-56	W
1997-98	h	Southern	82-38	W
1992-93	h	Lafayette	48-41	W
1987-88	h	Drake	76-65	W
1986-87	n	vs. American	54-51	W
1981-82	n	vs. Wayland Baptist	93-78	W
1978-79	a	at Nebraska	77-71	W

## TEAM COMPARISONS

## KANSAS STATE

1-1, 0-0 Big 12
Jeff Mittie (Missouri Western '89)
117-80 (.594; 7th season)
571-315 (.644; 29th season)
L, 60-49, vs. (11/12) Kentucky (12/3/20)
L1

Christianna Carr (15.0 ppg)
Ayoka Lee (6.5 rpg)
Emilee Ebert (4.0 apg)

## 2020-21 Record

Head Coach
Record at School
Career Record
Last Game
Current Streak

Scoring Leaders
Rebounding Leaders
Assist Leaders

## CENTRAL ARKANSAS

1-2, 0-0 Southland
Sandra Rushing (Alabama '86)
155-96 (.618; 9th season)
558-352 (.613; 32nd season)
W, 74-70, at Arkansas-Pine Bluff (12/1/20)
W1

Jalisa Outlaw (14.7 ppg)
Briana Trigg (8.0 rpg)
Tori Lasker (4.5 apg)

## K-STATE

STATS	UCA
67.5	53.0
55.5	72.3
+2.0	-19.3
.420	.324
.361	.426
.261	.213
.172	.262
.529	.688

## K-STATE

STATS	UCA
38.0	38.7
37.0	43.0
+1.0	-4.3
16.0	11.7
16.0	18.7
9.5	15.3
4.0	8.0
6.0	1.3

## CURRENT K-STATE PLAYERS VS. CENTRAL ARKANSAS

CHRISTIANNA CARR	G/GS	FG-A	3FG-A	FT-A	RB	PF	PTS	A	TO	BK	ST	MIN
TOTALS	-	-	-	-	-	-	-	-	-	-	-	-
EMILEE EBERT	G/GS	FG-A	3FG-A	FT-A	RB	PF	PTS	A	TO	BK	ST	MIN
TOTALS	-	-	-	-	-	-	-	-	-	-	-	-
CYMONE GOODRICH	G/GS	FG-A	3FG-A	FT-A	RB	PF	PTS	A	TO	BK	ST	MIN
TOTALS	-	-	-	-	-	-	-	-	-	-	-	-
SYDNEY GOODSON	G/GS	FG-A	3FG-A	FT-A	RB	PF	PTS	A	TO	BK	ST	MIN
TOTALS	-	-	-	-	-	-	-	-	-	-	-	-
TAYLOR LAUTERBACH	G/GS	FG-A	3FG-A	FT-A	RB	PF	PTS	A	TO	BK	ST	MIN
TOTALS	-	-	-	-	-	-	-	-	-	-	-	-
AYOKA LEE	G/GS	FG-A	3FG-A	FT-A	RB	PF	PTS	A	TO	BK	ST	MIN
TOTALS	-	-	-	-	-	-	-	-	-	-	-	-
LAURA MACKE	G/GS	FG-A	3FG-A	FT-A	RB	PF	PTS	A	TO	BK	ST	MIN
TOTALS	-	-	-	-	-	-	-	-	-	-	-	-
JADA MOORE	G/GS	FG-A	3FG-A	FT-A	RB	PF	PTS	A	TO	BK	ST	MIN
TOTALS	-	-	-	-	-	-	-	-	-	-	-	-
MAKAYLA PIPPIN	G/GS	FG-A	3FG-A	FT-A	RB	PF	PTS	A	TO	BK	ST	MIN
TOTALS	-	-	-	-	-	-	-	-	-	-	-	-
RACHEL RANKE	G/GS	FG-A	3FG-A	FT-A	RB	PF	PTS	A	TO	BK	ST	MIN
TOTALS	-	-	-	-	-	-	-	-	-	-	-	-
ASHLEY RAY	G/GS	FG-A	3FG-A	FT-A	RB	PF	PTS	A	TO	BK	ST	MIN
TOTALS	-	-	-	-	-	-	-	-	-	-	-	-
SAVANNAH SIMMONS	G/GS	FG-A	3FG-A	FT-A	RB	PF	PTS	A	TO	BK	ST	MIN
TOTALS	-	-	-	-	-	-	-	-	-	-	-	-
JADA THORPE	G/GS	FG-A	3FG-A	FT-A	RB	PF	PTS	A	TO	BK	ST	MIN
TOTALS	-	-	-	-	-	-	-	-	-	-	-	-



**LAST TIME OUT**

(11/12) Kentucky 60, Kansas State 49  
(December 3, 2020; Manhattan, Kan.)

- K-State and Kentucky exchanged the lead 10 times before Kentucky went on an 11-0 run over the final five minutes of the game to secure the win.
- K-State was led by **Christianna Carr** with 15 points and five rebounds, while **Rachel Ranke** came off the bench to add 12 points, four rebounds and three assists.
- Kansas State made a season-high eight 3-pointers, the most since March 3, 2020, at Oklahoma State when the Wildcats made eight.

**K-STATE AMONG TOP-20 IN NCAA HISTORY FOR WINS**

- Kansas State women's basketball is in its 53rd season of action and ranks among the top programs in NCAA history for all-time wins.
- K-State's all-time record stands at 970-609 (.614) and the Wildcats entered the 2020-21 season ranked 19th in NCAA Division I women's basketball history for program wins. The Wildcats are the 19th program in NCAA Division I history to reach 950 or more wins as a program and the third among the Big 12 (Texas, Baylor). K-State is averaging 18.6 wins per season.
- The Wildcats have accumulated 25 20-win seasons and have recorded 345 victories inside Bramlage Coliseum.
- K-State has 202 wins in the Big 12 Conference.
- Kansas State has registered 220 victories when they were ranked in the Associated Press top-25 poll and achieved 82 wins against teams ranked in the AP poll.

**ALL-TIME WINS OF BIG 12 SCHOOLS**

Rk.	School.....	Wins
1.	Texas .....	1,110
2.	Baylor .....	1,000
3.	<b>Kansas State.....</b>	<b>970</b>
4.	Texas Tech.....	927
5.	Kansas.....	839
6.	Oklahoma .....	825
7.	Oklahoma State .....	803
8.	West Virginia.....	800
9.	Iowa State.....	762
10.	TCU.....	629

**K-STATE AGAINST RANKED OPPONENTS**

- The Wildcats are 82-217 (.274) against teams ranked in the Associated Press (AP) poll including a 51-62 (.451) mark against AP ranked teams in Manhattan.
- K-State is 10-41 (.196) against AP ranked opponents in head coach Jeff Mittie's six seasons in Manhattan.

**WILDCATS' DEFENSE FORGES IDENTITY**

- K-State has continued to be a force on the defensive end during head coach **Jeff Mittie**'s seven seasons on the bench.
- Kansas State has started the 2020-21 season by allowing 55.5 points on a .361 field goal percentage.
- Last season, the Wildcats allowed its opponents 64.7 points per game and a field goal percentage of .374. The Wildcats are fifth in the Big 12 in scoring defense and third in the Big 12 and 63rd in the nation in field goal percentage defense.
- K-State allowed 40 points to UIC on November 11, which were the fewest surrendered by K-State since allowing 40 to UTEP on November 26, 2016.
- During the last 18 seasons, K-State is 113-3 (.974) when holding an opponent to 49 points or less including a 32-0 mark in the Mittie era.

**K-STATE POINTS PER GAME ALLOWED - MITTIE ERA**

Season	Opp. FG%	OPPG	Season	Opp. FG%	OPPG
2020-21	.361	55.5	2016-17	.385	62.4
2019-20	.374	64.7	2015-16	.368	61.4
2018-19	.389	64.4	2014-15	.384	58.2
2017-18	.400	66.6			

**CATS SEND BACK SHOTS UNDER MITTIE**

- Under head coach **Jeff Mittie**, Kansas State has piled up blocked shots. K-State has sent back 938 shots for 4.76 per game in the 197 games. K-State has 140 or more blocks in each of Mittie's six seasons.
- The Wildcats have 13 blocks (6.5 bpg) in the first two games this season.
- K-State opened the 2020-21 season with 10 blocks against Southern. The 10 blocks were tied for the second most in the Big 12 during the opening week.
- K-State has blocked 10 or more shots in a game 10 times (9-1) since Mittie took over the program in 2014-15.
- In the 2019-20 season, the Wildcats averaged 5.6 blocks per game and had 163 total blocks. K-State ranked 11th in the nation in blocks per game and 16th for total blocks. According to herhoopstats.com, K-State ranked 17th in the nation in block rate at 12.9 percent. K-State has finished among the top-35 in block rate in three of the last five seasons including 11th in the 2015-16 season.

• K-State's blocks total of 163 tied for second in school history for a single season.

- The per game total of 5.6 set the single-season record, topping the previous mark of 5.0 set in the 2007-08 season.
- K-State set a 2019-20 season-high with 11 blocks against UIC on November 11. The 11 blocks were the third-highest total in the Mittie era and the sixth-most in program history for a

**TOP-5 SINGLE SEASON BLOCK TOTALS**

Rk.	Season.....	Blocks
1.	2006-07 .....	164
2.	2005-06 .....	163
	2019-20 .....	163
4.	2017-18 .....	160
5.	2007-08 .....	159

**K-STATE PICKING POCKETS**

- The Wildcats stepped into the passing lanes during the 2019-20 season.
- Kansas State averaged 7.0 steals per game (202 steals). Of the 408 turnovers K-State forced this season, 49.5 percent came from a steal.
- The Cats have 10 straight seasons with 200 or more steals.
- Against Oral Roberts, K-State snared a season-high 15 steals. Since the start of the **Jeff Mittie** era in the 2014-15 season, the Wildcats have 12 games with 15 or more steals.
- K-State had four games last season with 10 or more steals.

**K-STATE HOLDS FOES TO SINGLE-DIGIT QUARTERS**

- In the sixth season of the quarter system in women's college basketball, K-State's defense has limited its opponents point production for 10 minute durations.
- Kansas State is 52-15 (.776) when holding an opponent to single digits in any quarter in a game.
- K-State recorded 14 single digit quarters in the 2019-20 season. The Wildcats held three teams to five points in the third quarter this season. The five points allowed were the fewest K-State allowed in any quarter since holding Oklahoma State to three points in the first quarter on January 23, 2019.

**K-STATE ATHLETIC COMMUNICATIONS**

Kansas State Athletic Communications  
1800 College Ave., West Stadium Center  
Manhattan, KS 66502

Phone: (785) 532-6735 • Fax: (785) 532-6093

**Randy Peterson**

Asst. Athletic Communications Director/WBB Contact  
Office: (785) 532-7975 • Cell: (785) 587-7769  
E-mail: rpeterson@kstatesports.com

**ON THE INTERNET**

All K-State releases and game notes, results, statistics, boxscores, schedules, rosters and coach and player information is available on the Internet at [www.kstatesports.com](http://www.kstatesports.com). Also available at [kstatesports.com](http://kstatesports.com), free live audio and free live stats. Recaps and statistics are updated after each game. For live video feeds of selected games, please visit [kstatehd.tv](http://kstatehd.tv).

**TWICE-WEEKLY RELEASES**

The Athletics Communications Office e-mails its twice-weekly women's basketball releases typically two days before the next contest. The game notes are also available at [www.kstatesports.com](http://www.kstatesports.com) in both text and PDF formats. If you are interested in receiving releases and game notes via e-mail, please contact **Randy Peterson** at [rpeter-son@kstatesports.com](mailto:rpeter-son@kstatesports.com) to be placed on the list.

**MEDIA OPPORTUNITIES****COACH JEFF MITTIE AVAILABILITY**

Head coach Jeff Mittie will be available for interviews twice weekly during the season (typically Mondays and Thursdays). Please contact Randy Peterson for dates and times of this availability.

**PLAYER AVAILABILITY**

All player interviews **MUST** be arranged through the K-State Athletics Communications Office. During the season, players are available to the media twice a week, typically Mondays and Thursdays. To arrange an interview before or after practice, please contact Randy Peterson at least one day in advance. Players will not be available for game-day interviews until the postgame press conference.

**POSTGAME POLICY**

Kansas State's locker room is closed. Media will be asked to submit a list of player requests to Randy Peterson with eight minutes remaining in the contest. Head coach Jeff Mittie and requested players will be available via Zoom.

**WE ARE K-STATE**

When referring to Kansas State University, please only use the terms **Kansas State** or **K-State**. Please refrain from using KSU, Kansas St., Kan. St., or any other variation. The only acceptable nicknames include **Wildcats** or **Cats**. In addition, K-State plays in the **Big 12 Conference** or **Big 12**. Please do not use roman numerals (Big XII) when referring to the Conference. Your cooperation is appreciated.

## 2020-21 K-STATE AWARDS &amp; HONORS

## 2021 Wooden Award watch list

Ayoka Lee, So., C

## 2021 Wade Trophy watch list

Ayoka Lee, So., C

## 2021 Jersey Mike's Naismith Trophy watch list

Ayoka Lee, So., C

## 2021 Lisa Leslie Award watch list

Ayoka Lee, So., C

## 2020-21 Preseason All-Big 12

Ayoka Lee, So., F (unanimous)

## 2019-20 Preseason All-Big 12 Honorable Mention

Rachel Ranke

## Wildcats Overseas

Breanna Lewis (Torun; Poland)

7.8 ppg, .684 FG%, 8.0 rpg

Peyton Williams (Spartak Vidnoe; Russia)

10.0 ppg, .654 FG%, 3.5 rpg, 2.0 apg

## K-STATE CLEANING THE GLASS

- The Wildcats have opened the 2020-21 season with an advantage on the boards, 38.5 to 37.0.
- Since the 2001-02 season, Kansas State owns a record of 236-35 (.871) when holding the edge on the glass.
- In the 2019-20 season, K-State set a school record for rebounds per game by averaging 43.3 rebounds per game (1,257 rebounds). The Wildcats ranked 10th in the nation for rebounds per game and second in the Big 12. K-State's rebounding margin of +5.6 per game ranked third in the Big 12 and 48th in the nation. The Wildcats had the edge on the boards in 19 of 29 games.
- The 1,257 rebounds in the 2019-20 season rank fifth in program history for total rebounds in a season.
- This was the 19th straight season K-State pulled in 1,000 or more rebounds and just the seventh time in program history with 1,250 or more rebounds in a season
- K-State had five games last season with 50 or more rebounds, the most since the 1989-90 season (5). The Wildcats had 18 games with 40 or more rebounds, which was the most since the 1989-90 season (20).
- The Wildcats hauled in a season-high 64 rebounds at TCU on February 1. The Wildcats had a season-high 27 offensive rebounds against the Horned Frogs. The 64 rebounds were the most by a Big 12 team last season.
- The 64 rebounds at TCU were the second-most in program history and are the most since the school record of 67 was set on January 17, 1975, against Nebraska.

## REBOUNDS IN A SINGLE-GAME - K-STATE HISTORY

Rk.	Opponent (Date)	Reb. Margin
1.	vs. Nebraska (1/17/75)	67
2.	at TCU (2/1/2020)	64
3.	vs. Mississippi Valley State (12/1/06)	61
	vs. Pacific Christian (11/23/81)	61
	vs. Creighton (12/17/89)	61
6.	vs. Iowa State (1/25/05)	60

## REBOUNDS IN A SEASON - SINCE 1996-97

Rk.	Season	Rebs.	RPG	Games
1.	2002-03	1365	40.1	34
2.	2006-07	1275	37.5	34
3.	2016-17	1266	37.2	34
4.	2004-05	1262	39.4	32
5.	2019-20	1257	43.3	29
6.	2005-06	1252	36.8	34
7.	2012-13	1241	33.5	37
8.	2001-02	1210	35.6	34

## MAGIC NUMBER IS 70 POINTS

- Since the 2001-02 season, K-State is 212-23 (.902) when scoring 70 or more points in a game including a 60-9 (.870) record in the Jeff Mittie era.
- Kansas State scored a season-high 109 points against Oral Roberts on November 18. The 109 points are tied for the third most in program history and the most in the Mittie era.
- This was the 25th time K-State has scored 100 or more points in a game and the second time under Mittie. K-State owns a 25-0 record in games scoring 100 or more points.

## K-STATE POINTS SINGLE GAME - SINCE 1999-00

Rk.	Opponent (Date)	Points
1.	Arkansas-Pine Bluff (12/2/02)	115
2.	Oral Roberts (11/18/19)*	109
3.	vs. Illinois State (11/26/04)	105
	Grambling State (11/30/01)	105
5.	Iowa (1/5/03)	103
6.	Florida Atlantic (12/13/15)*	102
	Eastern Kentucky (11/18/99)	102
8.	at Santa Clara (11/26/06)	100

\* - Jeff Mittie era

## SCORING TRENDS NORTH

- K-State has opened the 2020-21 season with an average of 57.5 points on a field goal percentage of .420.
- At the conclusion of the 2019-20 season, K-State averaged 68.8 points per game with 1,996 points scored. This was the highest scoring average for the Wildcats since the 2005-06 season (70.2 ppg).
- The Wildcats scored 80 or more points seven times last season, including a high of 109 against Oral Roberts on November 18, 2019.

## K-STATE POINTS PER GAME - LAST 10 SEASONS

Season	PPG	Pts	Season	PPG	Pts
2020-21	57.5	115	2015-16	64.4	2,062
2019-20	68.8	1,996	2014-15	59.6	1,967
2018-19	64.5	2,128	2013-14	62.2	1,865
2017-18	68.0	2,313	2012-13	61.2	2,264
2016-17	67.5	2,294	2011-12	57.1	1,942

## 20-PT QUARTERS FOR THE WILDCATS

- Since the inception of the quarter system in the 2015-16 season, K-State owns an overall record of 72-37 (.661) when scoring 20 or more points in any quarter in a game.
- Since the 2015-16 season, K-State has registered 170 quarters with 20 or more points with a high of 43 in the 2017-18 season. In the 2019-20 season, K-State had 37 quarters with 20 or more points scored.

## LAST TIME WITH 20+ POINTS IN A QUARTER

QTR	Opponent (Date)	Pts
1st	vs. Oklahoma (1/25/20)	27
2nd	vs. Kansas (3/8/20)	23
3rd	vs. Kansas (3/8/20)	24
4th	vs. Southern (11/29/20)	21

## CATS CASH IN AT THE CHARITY STRIPE

- Kansas State has continued to earn trips to the free throw line, which is a trend during head coach Jeff Mittie's time at K-State.
- K-State opened the season with a 9-of-17 (.556) effort from the line.
- During the 2019-20 season, the Wildcats were 366-of-532 (.688) from the foul line and averaged 18.3 trips to the charity stripe, including five games with 25 or more attempts. The Wildcats produced 18.3 percent of its points from the free throw line.

## K-STATE FREE THROWS MADE &amp; PCT. - MITTIE ERA

Season	FTsM	FT %	Season	FTsM	FT %
2020-21	9	.556	2016-17	462	67.8
2019-20	366	68.8	2015-16	368	64.8
2018-19	424	71.3	2014-15	399	61.7
2017-18	438	72.4			

## THREE IS NOT A CROWD, IT'S A BENEFIT

- Since 2011-12, when three or more players reach double figures in scoring in the same game, K-State is 124-60 (.674). K-State is 15-8 when three or more players score in double figures in the 2019-20 season.
- The Wildcats had a season-high seven players reach double figures against Oral Roberts on November 18.

## K-STATE DOUBLE FIGURE SCORING COMBOS - 2020-21

Players .....Record ..... Last Game

## SKY-HIGH FIELD GOAL PERCENTAGE

- When K-State shoots 50.0 percent or better in the **Jeff Mittie** era, Kansas State has been victorious. Since the 2014-15 season, the Wildcats are 21-1 (.955) when shooting 50.0 percent or better. The top field goal percentage by K-State under Mittie is 64.9 percent in an 85-41 win over UIW on December 3, 2019.
- The field goal percentage of 64.9 percent set the K-State Bramlage Coliseum record and the highest for K-State in any game since February 25, 1987, when the Wildcats carded a 65.4 percent (34-of-52) effort against Missouri.
- K-State tallied a season-high in field goals made in its win over Oral Roberts on November 18. The Wildcats finished the night with 38 made field goals.
- For the season, the Wildcats shot 40.5 percent from the field and ranked 137th in the nation and sixth in the Big 12.

## TOP FIELD GOAL PERCENTAGES - MITTIE ERA

Rk.	Opponent (Date)	FG % (FGM-FGA)
1.	vs. UIW (12/3/19)	.649 (37-57)
2.	vs. TCU (2/11/15)	.635 (33-52)
3.	vs. Akron (3/19/15) ^	.571 (28-49)
4.	vs. Kansas (2/24/18)	.569 (33-58)
5.	vs. Oral Roberts (11/18/19)	.551 (38-69)

^ - WNIT

## K-STATE ATTACKING THE PAINT

- The Wildcats have used its height advantage to its benefit in the lane, as they are outscoring opponents 70-48 in the lane this season.
- Kansas State attacked the lane in its season-opening win over Southern. The Wildcats tallied 50 points in the paint, which were the most since December 7, 2019, at Arkansas when K-State notched 52 points.
- In the 2019-20 season, Kansas State pounded the paint. The Wildcats scored 988 (34.1 ppg) of its 1,996 points from the lane or 49.5 percent of its point total.
- K-State outscored opponents in the paint by a margin of +208 in the 2019-20 season.
- Under head coach **Jeff Mittie**, Kansas State has scored 900 or more points in the paint in six straight seasons including a high of 1,064 points (31.3 ppg) during the 2016-17 season.
- The Wildcats scored a season-high 52 points in the paint at Arkansas on December 7. The 52 points in the lane were the

most since the Wildcats scored 54 paint points against West Virginia on January 1, 2017.

- K-State had 10 games with 40 or more points scored in the lane last season.

## WILDCATS SOLID FROM THE ARC

- Kansas State started the season slow from beyond the arc with just 12 connections on 46 attempts (.261). The Wildcats have received seven of the 12 made 3-point field goals from **Christianna Carr**.
- K-State has benefitted from the shooting of **Rachel Ranke** and Carr. When either player has made three or more 3-pointers in a game, K-State is 21-5.
- In the 2019-20 season, the Wildcats averaged 5.0 three-point field goals per game with a percentage at 26.8 (144-of-537). Of K-State's 1,996 points, 21.6 percent came from a three-pointer.
- Kansas State buried a season-high 11 three-point field goals against UIC, which were the most since K-State registered a 2018-19 season-high 14 connections from beyond the arc at Oklahoma on February 10. The 14 connections were tied for the most in the **Jeff Mittie** era.
- The Wildcats followed the effort against UIC with 10 connections against Oral Roberts on November 18. It was the first time K-State made 10 or more 3-point field goals in consecutive games since February 24 & 26, 2018, against Kansas and at Texas Tech when the Wildcats made 12 three-pointers in each game.
- Under Mittie, the Wildcats have made five or more 3-pointers in a game 136 times in 196 total games including 21 games with 10 or more connections from deep (19-2).
- In the seven seasons under Mittie, K-State has buried 1,150 three-pointers which is 5.87 per game.

## PRESEASON POLL NOT THE FINAL VERDICT FOR KANSAS STATE

- K-State has a history of exceeding the expectations of the league's coaches.
- Entering the 2020-21 season, the Wildcats were voted fourth in the preseason poll.
- In 2019-20, Kansas State was slotted for a fifth-place finish by the Big 12 coaches but ended the 2019-20 season tied for fourth in the league.
- In its history, K-State leads the Big 12 in exceeding preseason predictions, finishing on average +1.45 positions higher than its preseason prediction in the 22 polls that have a preseason prediction and a final standing attached to it. The 1996-97 and 2017-18 seasons are not included in these calculations, as neither had a preseason poll.
- The Wildcats have finished 17 of 22 seasons above its preseason prediction and owns the largest single-season deviation in league history from its preseason prediction and its final place with a +7 by winning the Big 12 in 2007-08.

## EXCEEDING PRESEASON EXPECTATIONS

Rk.	School	Avg. Deviation
1.	Kansas State	+1.45
2.	Oklahoma State	+0.91
	Iowa State	+0.91
4.	Baylor	+0.45
5.	Oklahoma	+0.32
6.	Texas Tech	-0.41
7.	Kansas	-0.95
8.	Texas	-1.73
	TCU (7 polls)	+0.57
	West Virginia (7 polls)	-1.14

## NATIONAL POLLS

## ASSOCIATED PRESS TOP 25 POLL (11/30)

Rk	School	Record	Points	PVS
1.	South Carolina (29)	3-0	.749	1
2.	Stanford (1)	1-0	.704	2
3.	Connecticut	0-0	.689	3
4.	<b>Baylor</b>	1-0	.665	4
5.	Louisville	2-0	.607	5
6.	Mississippi State	1-0	.586	6
7.	Arizona	1-0	.566	7
8.	North Carolina State	2-0	.564	8
9.	UCLA	1-0	.494	9
10.	Oregon	1-0	.477	10
11.	<b>Kentucky</b>	2-0	.466	11
12.	Texas A&M	2-0	.412	13
13.	Indiana	1-0	.342	16
14.	Maryland	2-1	.327	12
15.	Northwestern	0-0	.289	17
16.	Arkansas	3-1	.265	14
17.	Oregon State	1-0	.256	18
18.	Gonzaga	0-1	.193	21
19.	Ohio State	1-0	.189	20
20.	DePaul	0-1	.187	19
21.	Missouri State	2-1	.153	24
22.	Syracuse	1-0	.142	23
23.	<b>Iowa State</b>	1-1	.128	15
24.	Michigan	2-0	.110	25
25.	<b>Texas</b>	2-0	.05	NR

## Others receiving votes:

South Dakota State, 31; North Carolina, 24; South Dakota, 20; Notre Dame, 20; Arizona State, 10; Wake Forest, 9; Ohio, 6; Tennessee, 1; Rutgers, 1; Duke, 1; Boston College, 1; South Florida, 1

**Bold** denotes 2020-21 K-State opponent | First place votes in parentheses

## USA TODAY/WBCA TOP 25 COACHES' POLL (PRE)

Rk	School	Record	Points	PVS
1.	South Carolina (31)	0-0	.799	1
2.	Stanford (1)	0-0	.740	7
3.	Connecticut	0-0	.732	4
4.	<b>Baylor</b>	0-0	.702	3
5.	Louisville	0-0	.663	6
6.	North Carolina State	0-0	.601	8
7.	Mississippi State	0-0	.567	10
8.	Arizona	0-0	.548	12
9.	Oregon	0-0	.539	2
10.	UCLA	0-0	.535	9
11.	Maryland	0-0	.456	5
12.	<b>Kentucky</b>	0-0	.451	18
13.	Texas A&M	0-0	.377	21
14.	Arkansas	0-0	.360	25
15.	Indiana	0-0	.347	22
16.	Northwestern	0-0	.287	15
17.	Oregon State	0-0	.281	16
18.	<b>Iowa State</b>	0-0	.253	NR
19.	DePaul	0-0	.219	14
20.	Gonzaga	0-0	.192	13
21.	Syracuse	0-0	.149	NR
22.	Ohio State	0-0	.135	NR
23.	Notre Dame	0-0	.104	NR
24.	Michigan	0-0	.084	NR
25.	Missouri State	0-0	.076	19

## Others receiving votes:

Texas, 72; South Dakota, 25; Florida State, 23; Iowa, 13; Arizona State, 11; North Carolina, 11; South Florida, 9; Middle Tennessee State, 7; Rutgers, 7; Virginia Tech, 6; Tennessee, 4; BYU, 3; Florida Gulf Coast, 3; Princeton, 3; James Madison, 2; **South Dakota State**, 2; LSU, 1; UT-Martin, 1

**Bold** denotes 2020-21 K-State opponent | First place votes in parentheses

## K-STATE IN THE POLLS

	AP	COACHES	NCAA NET
Pre	-	-	-
N. 30	-	-	-
D. 7	-	-	-
D. 14	-	-	-
D. 21	-	-	-
D. 28	-	-	-
J. 4	-	-	-
J. 11	-	-	-
J. 18	-	-	-
J. 25	-	-	-
F. 1	-	-	-
F. 8	-	-	-
F. 15	-	-	-
F. 22	-	-	-
M. 1	-	-	-
M. 8	-	-	-
Final	-	-	-

## OTHER RANKINGS

Her Hoop Stats Rating

### THE JEFF MITTIE SHOW

Featuring the head coach of the Wildcats with Brian Smoller, the Jeff Mittie Show airs on Big 12 Now on ESPN+, YUR View and Spectrum. The show recaps the last few games for the Wildcats and looks ahead to the coming week.

Air Dates

Jan. 5; Jan. 26; Feb. 15; March 9

### THE JEFF MITTIE RADIO SHOW

Featuring the head coach of the Wildcats with Brian Smoller, the Jeff Mittie Radio Show recaps the last few games for the Wildcats and looks ahead to the coming week, while also taking live calls. The show will simulcast on the K-State Sports Network and Facebook Watch.

Air Dates (Mondays - unless noted - 6 p.m.)

Dec. 7, Dec. 15 (Tues.), Dec. 22 (Tues.), Jan. 4, Jan. 11, Jan. 18, Jan. 25, Feb. 1, Feb. 8, Feb. 15, Feb. 22, March 1

Affiliates

Manhattan KMAN -- 1350/93.3

North Fort Riley -- 102.5 FM

Topeka WIBW - 580

### K-STATE SIGNEES

**Brylee Glenn, Guard, Raymore, Missouri, The Barstow School**

- 75th ranked player by ProspectsNation.com
- 7th ranked player in state of Missouri by Prep Girls Hoops
- 3-time All-District 15 First Team

**Jaelyn Glenn, Guard, Raymore, Missouri, The Barstow School**

- 54th ranked player by ESPNW Hoopgurlz
- 21st ranked guard by ESPNW Hoopgurlz
- 60th ranked player by ProspectsNation.com
- 6th ranked win by ProspectsNation.com
- Top ranked player in state of Missouri by Prep Girls Hoops
- 3-time All-District 15 First Team

**Serena Sundell, Guard, Maryville, Missouri, Maryville High School**

- 3rd ranked player in state of Missouri by Prep Girls Hoops
- 2019-20 Class 3 Player of the Year by MBCA
- 2019-20 Class 3 All-State by MBCA
- Three-time All-District First Team selection

### SHARING IS CARING

- K-State has opened the 2020-21 season with 32 assists on 47 made field goals which is an assist percentage of 68.1. 21 assists against Southern.
- The Wildcats dished out a season-high 21 assists against Southern on November 29.
- The Wildcats are 68-2 when handing out 20 or more assists over the last 14 years.
- Kansas State registered a 2019-20 season-high with 30 assists against UIW on December 3. The 30 assists were the most in the **Jeff Mittie** era, the most since K-State handed out 30 assists against Grambling on December 4, 2009 and tied for the fifth-highest single-game total in program history.
- In the 2019-20 season, K-State averaged 15.6 assists and an assist percentage of 60.8. K-State ranked 39th in the nation and third in the Big 12 for assists per game.
- Since assists became an officially tracked stat in 1981-82, Kansas State has registered an assisted shot rate of 60.0 percent or higher at the end of a season 20 times in its history.

#### K-STATE ASSISTS - MITTIE ERA

Season	Assists	Asst %	Season	Assists	Asst %
2020-21	32	68.1	2016-17	500	61.1
2019-20	452	60.8	2015-16	476	64.5
2018-19	427	56.3	2014-15	425	61.1
2017-18	525	63.6			

### WILDCATS ON THE ROAD

- K-State has a 280-295 (.487) record in road games during the program's 52-year history.
- Since the 2000-01 season, K-State owns an 120-115 (.511) mark in road contests. K-State is 14-8 in the last two seasons in road games and are 10-3 in their last 12 Big 12 road games.
- With a 76-72 win at Texas Tech on January 11, K-State tied the school record for consecutive Big 12 road wins with six straight.
- In his career in games played on the road, head coach **Jeff Mittie** is 157-173 (.476) including a 31-36 (.463) mark during his time at K-State.
- Overall this season, K-State is 7-5 on the road. This is the fifth straight season K-State has won five or more road games in a season. This marks the second straight season K-State has won at least seven road games, which is the first time since the 2007-08 and 2008-09 seasons that K-State has won seven or more road games in consecutive seasons.

#### K-STATE ROAD RECORDS - MITTIE ERA

Season	W-L	Pct.	Season	W-L	Pct.
2019-20	7-5	.583	2016-17	5-6	.455
2018-19	7-3	.700	2015-16	5-8	.385
2017-18	5-6	.455	2014-15	2-8	.200

### CAREER DEBUTS AT K-STATE

- Five players - **Sydney Goodson, Taylor Lauterbach, Jada Moore, Makayla Pippin and Jada Thorpe** - made their K-State debuts on Sunday against Southern.
- This was the most K-State players to make their K-State debut in a season-opener since the 2017-18 season when six players debuted against Stephen F. Austin.
- Goodson (5), Lauterbach (4) and Moore (6) each scored in their first appearances in a Wildcat uniform.
- Of the 75 players to make their K-State women's basketball career debuts from the 2000-01 season to the 2020-21 season, only three scored 20 or more points in their first game.
- The three players to score 20 or more points in their Kansas State career debuts were: Laurie Koehn (27 points, at Georgia Tech, 11/16/2001), Kaylee Page (21 points, at Tulsa, 11/13/2015) and Tasha Dickey (20 points, vs. Dartmouth, 11/12/2011).
- None of the three players were true freshmen at the time of their K-State career debuts. Koehn was a redshirt freshman. Page was a sophomore after transferring from Nebraska and Dickey was a senior who was a graduate transfer from Arizona.

### ODDS & ENDS FROM 2019-20

- Due to the COVID-19 pandemic, K-State completed the season with 29 games played. This marked the first time since the 2000-01 season that K-State played fewer than 30 games in a season.
- With its 10-8 league mark in the 2019-20 season, this was the first time since the Big 12 Conference went to a round robin schedule in the 2012-13 season, that K-State won 10 or more Big 12 games in consecutive seasons. K-State has won 10 or more league games in three of the last four seasons.
- K-State registered seven road wins in the 2019-20 season. The seven road wins in two straight seasons marked the first time since the 2007-08 and 2008-09 that K-State won seven or more road games in consecutive seasons.
- The Wildcats finished second in school history for blocks in a season with 163. K-State set the school record for blocks average in a season at 5.6.
- K-State set a school record for rebounds per game by averaging 43.3 rebounds per game (1,257 rebounds). The 1,257 rebounds in the 2019-20 season rank fifth in program history for total rebounds in a season.
- K-State finished the season with 202 steals. The Wildcats have 10 straight seasons with 200 or more steals.
- **Ayoka Lee** became the first player in program history with the combination of 450 or more points, 300 or more rebounds and 90 or more blocks.
- Lee was the first freshman in program history with 300 or more rebounds in a freshman season.
- Lee set the school record for rebounding average at 11.4 per game.
- Lee blocked 91 shots and finished second in program history for blocks in a single season and established a new freshman record. Her 3.1 blocks per game set the school record for a single season.
- **Christianna Carr** was the 10th player in program history to register 55 or more 3-point field goals made in a sophomore season.





### WILDCATS WITH 300+ WINS IN BRAMLAGE

- K-State is 345-140 (.711) all-time inside Bramlage Coliseum, which is in its 32nd season of existence.
- In the 2019-20 season, Kansas State is 9-6 in home games. K-State has recorded a .500 or better record at home in 10 straight seasons.
- The 2018-19 season (12-4) marked the 30th time in 53 seasons that the Wildcats reached double figures in home victories. It marked the 22nd season K-State has won 10 or more games in Bramlage including five straight seasons.
- In his career in games played in his home venue, head coach **Jeff Mittie** is 349-97 (.783) including a 75-32 (.701) record at K-State.
- Kansas State has protected Bramlage Coliseum with determination against non-conference foes with a record of 200-28 (.877). Mittie is 46-7 (.868) in non-conference games in Bramlage Coliseum.

### FILLING UP THE PURPLE PALACE

- The Wildcats ranked 37th in the nation and fifth in the Big 12 in average attendance (3,331 average; 15 home games) in the 2019-20 season. In total attendance, K-State ranked 38th in the nation and fifth in the Big 12 (49,958).
- When the crowd is 7,500 or more in Bramlage Coliseum, K-State is 43-12 (.782) including a record of 18-5 when the crowd is 10,000 or more.
- The Wildcats moved into Bramlage Coliseum prior to the start of the 1988-89 season and have seen 1,851,225 fans pass through the doors. K-State reached the 1,500,000 mark for women's basketball attendance on Feb. 21, 2015.

### K-STATE AT HOME SINCE 2014-15

<b>75</b>	Home wins for K-State in the Jeff Mittie era
<b>46</b>	Wins against non-conference opponents
<b>9</b>	Longest home winning streak under Mittie (2014-15)
<b>5</b>	Consecutive seasons with 10 or more home wins

### YEAR-BY-YEAR RESULTS IN BRAMLAGE COLISEUM

YEAR	RECORD	YEAR	RECORD
1988-89	11-2	2004-05	11-2
1989-90	11-2	2005-06	14-5
1990-91	8-4	2006-07	13-5
1991-92	4-9	2007-08	12-2
1992-93	6-10	2008-09	13-1
1993-94	10-3	2009-10	7-8
1994-95	9-5	2010-11	13-2
1995-96	11-4	2011-12	10-4
1996-97	11-1	2012-13	12-7
1997-98	8-5	2013-14	7-7
1998-99	10-4	2014-15	15-5
1999-00	7-6	2015-16	13-4
2000-01	7-6	2016-17	14-4
2001-02	13-2	2017-18	11-8
2002-03	19-1	2018-19	12-4
2003-04	13-0	2019-20	9-6
		2020-21	1-1
		<b>TOTALS</b>	<b>345-140 (.711)</b>

### BRAMLAGE COLISEUM FACTS

Built: 1986  
Capacity: 12,528  
Seasons: 32nd  
K-State's All-Time Record: 345-140 (.711)

### HOME CROWDS OVER 10,000 AT BRAMLAGE COLISEUM

1.	Nebraska (1/12/02)	13,466
	Marquette (3/31/06)	13,340
	Kansas (1/17/04)	13,340
	Texas A&M (2/22/03)	13,340
	Oklahoma State (2/15/03)	13,340
	Texas (1/25/03)	13,340
	Iowa State (2/2/02)	13,340
	Texas Tech (1/27/02)	13,340
9.	Baylor (2/4/12)	12,528
	Connecticut (12/11/16)	12,528
11.	Texas Tech (3/3/04)	12,174
12.	Oklahoma (2/13/02)	11,789
13.	Arkansas (3/17/02)	11,786
14.	Colorado (1/11/03)	11,753
15.	Notre Dame (3/25/03)	11,534
16.	Kansas (2/26/05)	11,254
17.	Iowa (1/5/03)	10,913
18.	Oklahoma (1/31/04)	10,866
19.	Harvard (3/23/03)	10,732
20.	Kansas (2/26/03)	10,702
21.	Kent State (3/15/02)	10,573

**2020-21 Big 12 Preseason Poll**

1. Baylor (9) .....	81
2. Texas (1) .....	73
3. Iowa State .....	69
4. Kansas State .....	50
5. West Virginia .....	45
6. Texas Tech .....	36
7. Oklahoma .....	33
8. Oklahoma State .....	26
9. TCU .....	23
10. Kansas .....	14

**Preseason All-Big 12 Honors****Preseason Player of the Year:** NaLyssa Smith, Baylor**Preseason Newcomer of the Year:** Dijonai Carrington, Baylor**Preseason Freshmen of the Year:** Sarah Andrews, Baylor**Preseason All-Big 12 Team**

Queen Egbo, Baylor; DiDi Richards, Baylor; NaLyssa Smith, Baylor; Ashley Joens, Iowa State; Ayoka Lee, Kansas State; Taylor Robertson, Oklahoma; Natasha Mack, Oklahoma State; Lauren Heard, TCU; Charli Collier, Texas; Vivian Gray, Texas Tech

**Honorable Mention**

Kristin Scott, Iowa State; Zakiyah Franklin, Kansas; Holly Kersgieter, Kansas; Rachel Ranke, Kansas State; Ana Llanusa, Oklahoma; Madi Williams, Oklahoma; Celeste Taylor, Texas; Chrislyn Carr, Texas Tech; Kysre Gondrezick, West Virginia; Kari Niblack, West Virginia

**2019-20 Phillips 66 Big 12 Awards****Coach of the Year:** Kim Mulkey, Baylor**Player of the Year:** Lauren Cox, Baylor**Freshman of the Year:** Ayoka Lee, Kansas State**Co-Newcomer of the Year:** Natasha Mack, Oklahoma State**Co-Newcomer of the Year:** Te'a Cooper, Baylor**Defensive Player of the Year:** DiDi Richards, Baylor**Sixth Man Award:** Queen Egbo, Baylor**All-Big 12 First Team (all honors listed alphabetical by school)**

Lauren Cox, Baylor; NaLyssa Smith, Baylor; Te'a Cooper, Baylor; Ashley Joens, Iowa State; Ayoka Lee, Kansas State; Peyton Williams, Kansas State; Vivian Gray, Oklahoma State; Lauren Heard, TCU; Charli Collier, Texas; Brittany Brewer, Texas Tech

**All-Big 12 Second Team**

DiDi Richards, Baylor; Natasha Mack, Oklahoma State; Kianna Ray, TCU; Sug Sutton, Texas; Tynice Martin, West Virginia

**All-Big 12 Honorable Mention**

Juicy Landrum, Baylor; Kristin Scott, Iowa State; Angela Harris, Kansas State; Taylor Robertson, Oklahoma; Jayde Woods, TCU; Joyner Holmes, Texas; Chrislyn Carr, Texas Tech; Kysre Gondrezick, West Virginia; Kari Niblack, West Virginia

**Big 12 All-Defensive Team**

Lauren Cox, Baylor; DiDi Richards, Baylor; Natasha Mack, Oklahoma State; Kianna Ray, TCU; Brittany Brewer, Texas Tech

**Big 12 All-Freshman Team**

Maggie Espenmiller-McGraw, Iowa State; Zakiyah Franklin, Kansas; Ayoka Lee, Kansas State; Gabby Gregory, Oklahoma; Celeste Taylor, Texas

**BIG 12 CONFERENCE****2020-21 STANDINGS**

	Big 12			Overall		
	W	L	.Pct	W	L	.Pct
Iowa State	1	0	1.000	2	1	.667
Texas	0	0	.000	3	0	1.000
West Virginia	0	0	.000	3	0	1.000
Baylor	0	0	.000	2	0	1.000
Oklahoma State	0	0	.000	2	0	1.000
Texas Tech	0	0	.000	2	0	1.000
Kansas	0	0	.000	2	1	.667
TCU	0	1	.000	2	1	.667
Kansas State	0	0	.000	1	1	.500
Oklahoma	0	0	.000	0	1	.000

\* - Big 12 regular season champion

**Saturday, December 5**

K-State at Central Arkansas, 2 p.m.

**Sunday, December 6**

TCU at Missouri, Canceled  
UT Arlington at K-State, Canceled  
South Carolina at Iowa State, 11 a.m.  
Oklahoma at Georgia, 11 a.m.  
Tennessee at West Virginia, 1 p.m.  
Oral Roberts at Kansas, 2 p.m.  
Baylor at Arkansas, 5 p.m.  
Texas A&M at Texas, 7 p.m.

**Monday, December 7**

SMU at Oklahoma State, 6:30 p.m.

**Tuesday, December 8**

Idaho State at K-State, 1 p.m.

**K-STATE AMONG 2020-21 STATISTICAL LEADERS****Team Stat Rankings - Big 12 (12/3)**

SCORING	All Games/Big 12 Games
Scoring Offense	57.5 (10th)/-
Scoring Defense	55.5 (5th)/-
Scoring Margin	+2.0 (9th)/-
Field Goal Pct.	.420 (6th)/-
3-Pt. Field Goal Pct.	.261 (6th)/-
3-Pt. Field Goals Made per Game	6.0 (3rd)/-
Free Throw Pct.	.529 (10th)/-
Field Goal Pct. Defense	.361 (7th)/-
3-Pt. Field Goal Pct. Defense	.172 (1st)/-

**REBOUNDING**

REBOUNDING	All Games/Big 12 Games
Rebounding Offense	38.0 (10th)/-
Rebounding Defense	37.0 (7th)/-
Rebounding Margin	+1.0 (10th)/-
3-Pt. Field Goals Made per Game	11.0 (10th)/-
Offensive Rebound Pct.	.389 (5th)/-
Defensive Rebounds per Game	27.0 (9th)/-
Defensive Rebound Pct.	.714 (8th)/-

**ADDITIONAL**

ADDITIONAL	All Games/Big 12 Games
Blocked Shots per Game	6.5 (12nd)/-
Assists per Game	16.0 (3rd)/-
Steals per Game	3.5 (9th)/-
Turnover Margin	-6.50 (9th)/-
Assist/Turnover Ratio	1.00 (5th)/-

**Player Stat Rankings - Big 12 (12/3)**

Ayoka Lee	All Games/Big 12 Games
Rebounds per Game	6.5 (17th)/-
Blocks per Game	2.0 (15th)/-

**Christianna Carr**

Christianna Carr	All Games/Big 12 Games
Points per Game	15.0 (112th)/-
Field Goal Pct.	.400 (15th)/-
3-Pt. FG Pct.	.438 (3rd)/-
3-Pt. FGs per Game	3.5 (1st)/-
Minutes Played per Game	31.5 (13th)/-

**Emilee Ebert**

Emilee Ebert	All Games/Big 12 Games
Assists per Game	4.0 (6th)/-
Assist/Turnover Ratio	2.0 (5th)/-
Blocks per Game	2.5 (12nd)/-
Minutes Played per Game	32.73 (9th)/35.2 (7th)

**Sydney Goodson**

Sydney Goodson	All Games/Big 12 Games
Minutes Played per Game	33.5 (8th)/-

**Rachel Ranke**

Rachel Ranke	All Games/Big 12 Games
3-Pt FGs per Game	1.0 (111th)/-

**Team Stat Rankings - NCAA (12/3)**

SCORING	All Games
Scoring Offense	57.5 (206th)
Scoring Defense	55.5 (44th)
Scoring Margin	+2.0 (126th)
Field Goal Pct.	.420 (106th)
3-Pt. Field Goal Pct.	.261 (169th)
3-Pt. Field Goals Made	12 (125th)
3-Pt. Field Goals Made per Game	6.0 (109th)
Free Throw Pct.	.529 (241st)
Field Goal Pct. Defense	.361 (78th)
3-Pt. Field Goal Pct. Defense	.172 (17th)

**REBOUNDING**

REBOUNDING	All Games
Rebounds	77 (140th)
Rebounds per Game	38.5 (148th)
Rebounding Margin	+1.5 (120th)

**ADDITIONAL**

ADDITIONAL	All Games
Blocked Shots	13 (30th)
Blocked Shots per Game	6.5 (20th)
Assists	32 (84th)
Assists per Game	16.0 (57th)
Steals	7 (209th)
Steals per Game	3.5 (229th)
Turnovers per Game	16.0 (104th)
Turnovers Forced	9.5 (250th)
Turnover Margin	-6.5 (222nd)
Assist/Turnover Ratio	1.00 (73rd)
Personal Fouls per Game	13.0 (18th)

**Player Stat Rankings - NCAA (12/3)**

Ayoka Lee	All Games
Blocked Shots	4 (33rd)
Blocks per Game	2.0 (57th)

**Emilee Ebert**

Emilee Ebert	All Games
Assists per Game	4.0 (118th)
Assist/Turnover Ratio	2.0 (125th)
Blocked Shots	5 (57th)
Blocks per Game	2.5 (5th)

**Christianna Carr**

Christianna Carr	All Games
Points per Game	15.0 (237th)
3-Pt FG Pct.	.438 (139th)
3-pt FGs Made per Game	3.5 (33rd)
Blocks per Game	1.0 (163rd)

**Sydney Goodson**

Sydney Goodson	All Games
Blocks per Game	2.0 (175th)





# 1 | SAVANNAH SIMMONS

G | 6-0 | JR. - 2L | BEL AIR, MD. (THE JOHN CARROLL SCHOOL)

- First player in the 53-year history of women's basketball at Kansas State from Maryland.
- Third player in the 53-year history of women's basketball at Kansas State to wear the number 1.

## 2020-21 GAME-BY-GAME

Opponent	Min	FG	3FG-3FGA	FT-FTA	O-D-Reb	PF	A	TO	Blk	St	Pts
Southern				DNP - Injured							
Kentucky				DNP - Injured							
at Central Arkansas											
Idaho State											
South Dakota State											
Omaha											
Kansas City											
at Iowa State *											
Texas *											
at Oklahoma *											
West Virginia *											
at Baylor *											
TCU *											
Oklahoma State *											
at West Virginia *											
at Kansas *											
Iowa State *											
Oklahoma *											
at Texas Tech *											
Baylor *											
at TCU *											
Kansas *											
at Oklahoma State *											
at Texas *											
Texas Tech *											

+ starts | \* Big 12 | ^ Big 12 Championships | % WNIT | \$ NCAA Tournament

## POINTS

2020-21 Season	-
Career	10, vs. Oral Roberts (11/18/19)

## FIELD GOALS MADE/ATTEMPTED

2020-21 Season	-/-
Career	3, vs. ORU (11/18/19)/6, vs. ORU (11/18/19)

## 3-PT. FIELD GOALS MADE/ATTEMPTED

2020-21 Season	-/-
Career	2, three times/ 4, twice

## FREE THROWS MADE/ATTEMPTED

2020-21 Season	-/-
Career	4, vs. UTRGV (12/28/19)/ 4, twice

## REBOUNDS

2020-21 Season	-
Career	5, four times

## ASSISTS

2020-21 Season	-
Career	5, twice

## BLOCKS

2020-21 Season	-
Career	1, three times

## STEALS

2020-21 Season	-
Career	2, four times

## MINUTES

2020-21 Season	-
Career	32, at Oklahoma (2/16/20)

## MISCELLANEOUS CAREER STATS

Double-Figure Scoring Games	1
20+ Point Games	-
Double-Figure Rebounding Games	-
5+ Rebound Games	4
Double-Figure Assist Games	-
5+ Assist Games	2
Double-Doubles	-
2+ Block Games	-
2+ Steal Games	4
4+ Made 3-Pt. FGs	-
2+ Made 3-Pt. FGs	3

## SIMMONS SETS CAREER-BESTS

- Junior **Savannah Simmons** has established career season-highs in her second season.
- For the season, Simmons carded career season-highs in scoring (70 pts; 3.0 ppg), assists (54; 2.3 apg), rebounds (44; 1.9 rpg), 3-point field goals made and attempted (14-41; .341) and free throws made and attempted (20-29; .690), steals (13; 0.6 spg) and blocks (3).
- She was an adept passer, as she tallied a 1.54 assist-to-turnover ratio (54 assists and 35 turnovers) and had 10 games with three or more assists including a career-high five at Texas on February 22 and against Kansas on March 8.

# 54

- **Savannah Simmons** is K-State's top returning passer for the 2020-21 season.
- Simmons set a career-high with 54 assists (2.3 apg) and an assist to turnover ratio of 1.54.
- Her assist total of 54 was 6.75 times more than her assist total from her freshman season when she dished out eight.
- Simmons is just the second player in program history to hand out 50 or more assists a season after handing out fewer than 10. She joins Haley Texada (7 to 59, 2011-12 to 2012-13) as the only two players to achieve this feat.

## SOPHOMORE (2019-20)

Played in 23 games with two starts... Notched a career-high 511 minutes played (22.2 mpg)... Carded season career-highs in scoring (70 pts; 3.0 ppg), assists (54; 2.3 apg), rebounds (44; 1.9 rpg), field goals made and attempted (18-59; .305), 3-point field goals made and attempted (14-41; .341), free throws made and attempted (20-29; .690), steals (13; 0.6 spg) and blocks (3)... Carded a career-high with 10 points on a career-best 3-of-6 effort from the field against Oral Roberts (11/18)... Also pocketed a career-high two steals against the Golden Eagles... Tallied five points and three rebounds at Oregon (12/21)... Tallied four points, three assists, two rebounds, a block and a steal against UTRGV (12/28)... Carded three points, four assists and one rebound at Texas Tech (1/11)... Notched six points, three rebounds, three assists and two steals off the bench against Texas (1/19)... Registered six points, five rebounds and four assists in her first career start against Texas Tech (2/5)... Tallied seven points, three rebounds, two assists and a steal at Oklahoma (2/16)... Carded two points, three rebounds and a career-high five assists at Texas (2/22).

## FRESHMAN (2018-19)

Played in 30 games with 156 minutes played (5.2 mpg)... Registered four points (0.1 ppg)... Shot .077 from the field and was 1-of-4 from beyond the arc... Was 1-of-4 from the free throw line... Pulled in 23 total rebounds (0.8 rpg) including 22 defensive rebounds... Handed out eight assists (0.3 apg)... Pocketed four steals (0.1 spg)... Made her K-State debut against UMKC (11/18) and pulled in five rebounds and handed out two assists in 14 minutes... Recorded her first career points against Vanderbilt (12/2) with a 3-pointer.

## SIMMONS'S CAREER STATISTICS

YEAR	G-GS	MIN-AVG.	FGM-FGA	PCT	3PT-A	PCT	FTM-FTA	PCT	O-D-T	AVG	PF-D	A	TO	BLK	ST	PTS-AVG
2018-19	30-0	156-5.2	1-13	.077	1-4	.250	1-4	.250	1-22-23	0.8	14-0	8	16	0	4	4-0.1
2019-20	23-2	511-22.2	18-59	.305	14-41	.341	20-29	.690	4-40-44	1.9	40-1	54	35	3	13	70-3.0
2020-21	-	-	-	-	-	-	-	-	-	-	-	-	-	-	-	-
<b>TOTAL</b>	<b>53-2</b>	<b>667-12.6</b>	<b>19-72</b>	<b>.264</b>	<b>15-45</b>	<b>.333</b>	<b>21-33</b>	<b>.636</b>	<b>5-62-67</b>	<b>1.3</b>	<b>54-1</b>	<b>62</b>	<b>51</b>	<b>3</b>	<b>17</b>	<b>74-1.4</b>

+ + + + +



# 2 | CYMONE GOODRICH

G | 5-10 | JR. - 2L | CHICAGO, ILL. (SOUTH SHORE INTERNATIONAL PREP)

- Third player in program history from the state of Illinois and from Chicago and first since 1985 (Jennifer Jones).

## 2020-21 GAME-BY-GAME

Opponent	Min	FG	3FG-3FGA	FT-FTA	O-D-Reb	PF	A	TO	Bk	St	Pts
Southern	10	0-1	0-0	0-0	0-0-0	2	0	2	0	0	0
Kentucky	16	1-4	0-0	0-0	0-2-2	1	2	0	0	0	2
at Central Arkansas											
Idaho State											
South Dakota State											
Omaha											
Kansas City											
at Iowa State *											
Texas *											
at Oklahoma *											
West Virginia *											
at Baylor *											
TCU *											
Oklahoma State *											
at West Virginia *											
at Kansas *											
Iowa State *											
Oklahoma *											
at Texas Tech *											
Baylor *											
at TCU *											
Kansas *											
at Oklahoma State *											
at Texas *											
Texas Tech *											

+ starts | \* Big 12 | ^ Big 12 Championships | % WNIT | \$ NCAA Tournament

## POINTS

2020-21 Season	2, vs. Kentucky (12/3/20)
Career	12, at Oklahoma State (12/31/17)

## FIELD GOALS MADE/ATTEMPTED

2020-21 Season	-/4, vs. Kentucky (12/3/20)
Career	5, twice/ 11, twice

## 3-PT. FIELD GOALS MADE/ATTEMPTED

2020-21 Season	-/-
Career	2, at Baylor (1/20/18)/ 5, vs. Saint Louis (3/15/18)

## FREE THROWS MADE/ATTEMPTED

2020-21 Season	-/-
Career	4, vs. Omaha (11/12/18)/ 6, vs. SFA (11/10/17)

## REBOUNDS

2020-21 Season	2, vs. Kentucky (12/3/20)
Career	5, twice

## ASSISTS

2020-21 Season	2, vs. Kentucky (12/3/20)
Career	5, twice

## BLOCKS

2020-21 Season	-
Career	1, vs. Stephen F. Austin (11/10/17)

## STEALS

2020-21 Season	-
Career	3, three times

## MINUTES

2020-21 Season	16, vs. Kentucky (12/3/20)
Career	27, twice

## MISCELLANEOUS CAREER STATS

Double-Figure Scoring Games	4
20+ Point Games	0
Double-Figure Rebounding Games	0
Double-Doubles	0
5+ Rebound Games	2
5+ Assist Games	2
2+ Steal Games	10
2+ Block Games	0
2+ Made 3-Pt. FGs	1

## REDSHIRT SOPHOMORE (2019-20)

Played in 27 games with one start and tallied 324 minutes of action (12.0 mpg)... Carded 52 points (1.9 ppg) 37 rebounds (1.4 rpg) and 25 assists (0.9 apg)... Tied her career season-high for assists and steals (19; 0.7 spg)... Made her 2019-20 season debut against Omaha (11/8) with two points, three steals, one rebound and one assist... Came off the bench against UIC (11/11) and tallied one point, a career-high five rebounds and tied her career high with five assists... Registered 10 points, five rebounds and three steals off the bench against Oral Roberts (11/18)... Came off the bench at Kansas City (12/14) to record nine points, two rebounds and two steals in a season-best 23 minutes... Tallied seven points on 3-of-4 shooting against Texas (1/19).

## SOPHOMORE (2018-19)

Suffered a season-ending shoulder injury and will apply for a medical hardship... Played in one game and tallied 16 minutes of action against Omaha (11/12)... Notched eight points, four rebounds and two steals.

## FRESHMAN (2017-18)

Saw action in 33 games and made three starts... Played a total of 552 minutes (16.7 mpg)... Registered 130 points (3.9 ppg), 41 rebounds (1.2 rpg) and 25 assists (0.8 apg)... Shot 46-of-157 (.293) from the field, including 17-of-58 (.293) from 3-point range... Carded a 21-of-34 (.618) effort from the free throw line... Pocketed 19 steals and blocked one shot... Ranked 14th in the Big 12 among the league's freshmen in scoring... Ranked 11th in the Big 12 among the league's freshmen in 3-point field goal percentage... Ranked 12th in the Big 12 among the league's freshmen in steals... Finished with three games of 10 or more points... Made her K-State debut in the starting lineup against Stephen F. Austin (11/10) with five points, one rebound, one assist, one block and one steal in 18 minutes... Notched 11 points at Missouri (11/30)... Carded 10 points in 16 minutes against UT Arlington (12/6)... Tallied 12 points on 5-of-11 shooting in 22 minutes at Oklahoma State (12/31)... Came off the bench to add seven points on 3-of-6 shooting, two rebounds, one assist and one steal at Kansas (1/28)... Carded six points, three rebounds, an assist and a steal at Oklahoma (1/31)... Registered four points, a career-high four rebounds, two assists and a steal at Texas Tech (2/26)... Tallied eight points, two rebounds, two assists and two steals against Baylor in the quarterfinals of the Big 12 Championship (3/3).

## GOODRICH'S CAREER STATISTICS

YEAR	G-GS	MIN-AVG.	FGM-FGA	PCT	3PT-A	PCT	FTM-FTA	PCT	O-D-T	AVG	PF-D	A	TO	BLK	ST	PTS-AVG
2017-18	33-3	552-16.7	46-157	.293	17-58	.293	21-34	.618	7-34-41	1.2	36-0	25	46	1	19	130-3.9
2018-19	1-0	16-16.0	2-4	.500	0-2	.000	4-4	1.000	0-4-4	4.0	4-0	0	3	0	2	8-8.0
2019-20	27-1	324-12.0	22-82	.268	0-24	.000	8-22	.364	13-24-37	1.4	27-0	25	29	0	19	52-1.9
2020-21	2-0	26-13.0	1-5	.200	0-0	.000	0-0	.000	0-2-2	1.0	3-0	2	2	0	0	2-1.0
<b>TOTAL</b>	<b>63-4</b>	<b>918-14.6</b>	<b>71-248</b>	<b>.286</b>	<b>17-84</b>	<b>.202</b>	<b>33-60</b>	<b>.550</b>	<b>20-64-84</b>	<b>1.3</b>	<b>70-0</b>	<b>52</b>	<b>80</b>	<b>1</b>	<b>40</b>	<b>192-3.0</b>





# 3 | MAKAYLA PIPPIN

G/F | 6-1 | JR. - TR | INDIANAPOLIS, IND. (CENTRAL ARIZONA COLLEGE)

- Second player in K-State WBB history from Maryland, joining current teammate Savannah Simmons

## 2020-21 GAME-BY-GAME

Opponent	Min	FG	3FG-3FGA	FT-FTA	O-D-Reb	PF	A	TO	Bk	St	Pts
Southern	4	0-2	0-2	0-0	1-1-2	0	1	0	0	0	0
Kentucky											
at Central Arkansas											
Idaho State											
South Dakota State											
Omaha											
Kansas City											
at Iowa State *											
Texas *											
at Oklahoma *											
West Virginia *											
at Baylor *											
TCU *											
Oklahoma State *											
at West Virginia *											
at Kansas *											
Iowa State *											
Oklahoma *											
at Texas Tech *											
Baylor *											
at TCU *											
Kansas *											
at Oklahoma State *											
at Texas *											
Texas Tech *											

+ starts | \* Big 12 | ^ Big 12 Championships | % WNIT | \$ NCAA Tournament

## POINTS

2020-21 Season	-
Career	-

## FIELD GOALS MADE/ATTEMPTED

2020-21 Season	-/2, vs. Southern (11/29/20)
Career	-/2, vs. Southern (11/29/20)

## 3-PT. FIELD GOALS MADE/ATTEMPTED

2020-21 Season	-/2, vs. Southern (11/29/20)
Career	-/2, vs. Southern (11/29/20)

## FREE THROWS MADE/ATTEMPTED

2020-21 Season	-/-
Career	-/-

## REBOUNDS

2020-21 Season	2, vs. Southern (11/29/20)
Career	2, vs. Southern (11/29/20)

## ASSISTS

2020-21 Season	1, vs. Southern (11/29/20)
Career	1, vs. Southern (11/29/20)

## BLOCKS

2020-21 Season	-
Career	-

## STEALS

2020-21 Season	-
Career	-

## MINUTES

2020-21 Season	4, vs. Southern (11/29/20)
Career	4, vs. Southern (11/29/20)

## MISCELLANEOUS CAREER STATS

Double-Figure Scoring Games	-
20+ Point Games	-
Double-Figure Rebounding Games	-
5+ Rebound Games	-
Double-Figure Assist Games	-
5+ Assist Games	-
Double-Doubles	-
4+ Steal Games	-
2+ Steal Games	-
4+ Made 3-Pt. FGs	-
2+ Made 3-Pt. FGs	-

## JUNIOR (2020-21)

Saw her first collegiate action against Southern (11/29) and tallied an assist.

## CENTRAL ARIZONA COLLEGE (2018-20)

Rated as the 15th junior college player in the nation by Girls Basketball Report in the 2019-20 season... Capped her 2019-20 season as a National Junior College Athletic Association (NJCAA) Women's Basketball Third-Team All-American... Saw action in 58 games with 54 starts... Registered 16.8 points per game (977 points), 8.9 rebounds per game (515 rebounds), 2.9 assists per game (166 assists), 1.7 steals per game (100 steals) and 0.6 blocks per game (32 blocks)... 21 career games with 20 or more points including a high of 34 points against Tohono O'odham Community College on December 7, 2019... Threat from beyond the arc in her two seasons, as she knocked down 92 three-point field goals on a .337 percentage... In the 2019-20 season, tallied 71 connections from deep on a .335 three-point percentage... In the 2019-20 season, helped the Vaqueras to a 28-3 overall record and a bid into the 2019-20 NJCAA National Tournament... Averaged 18.7 points (580 points) on a .421 field goal percentage including a .335 three-point field goal percentage... Helped Central Arizona College to a 22-9 record and a bid into the 2018-19 NJCAA Division I Region I Final... Averaged 14.7 points per game (397 points), 9.9 rebounds per game (267 rebounds) and 3.2 assists per game (86 assists).

## HIGH SCHOOL

Ranked as the number 19 forward in the nation by ESPNW Hoopgurlz and the number eight forward in the nation and 149th ranked overall prospect by ProspectsNation.com as a member of 2018 recruiting class... First team IAAM... MVP of 695 Hoops All-Star Game... Played a national schedule while attending National Christian Academy.

## PIPPIN'S CAREER STATISTICS

YEAR	G-GS	MIN-AVG.	FGM-FGA	PCT	3PT-A	PCT	FTM-FTA	PCT	O-D-T	AVG	PF-D	A	TO	BLK	ST	PTS-AVG
2020-21	1-0	4-4.0	0-2	.000	0-2	.000	0-0	.000	1-1-2	2.0	0-0	1	0	0	0	0-0.0
TOTAL	1-0	4-4.0	0-2	.000	0-2	.000	0-0	.000	1-1-2	2.0	0-0	1	0	0	0	0-0.0

+ + + + +



# 4 | SYDNEY GOODSON

G | 5-9 | SR. - TR | ARGYLE, TEXAS (TEXAS TECH/ARIZONA STATE)

- Rated as the No. 10 immediately eligible transfer for the 2020-21 season by ESPN.com.
- Took part in the 2020 Athletes in Action Virtual Leadership Academy

## 2020-21 GAME-BY-GAME

Opponent	Min	FG	3FG-3FGA	FT-FTA	O-D-Reb	PF	A	TO	Bk	St	Pts
Southern +	34	2-6	1-5	0-0	0-5-5	1	4	4	1	1	5
Kentucky +	31	1-7	0-3	0-0	0-2-2	2	2	4	0	2	2
at Central Arkansas											
Idaho State											
South Dakota State											
Omaha											
Kansas City											
at Iowa State *											
Texas *											
at Oklahoma *											
West Virginia *											
at Baylor *											
TCU *											
Oklahoma State *											
at West Virginia *											
at Kansas *											
Iowa State *											
Oklahoma *											
at Texas Tech *											
Baylor *											
at TCU *											
Kansas *											
at Oklahoma State *											
at Texas *											
Texas Tech *											

## GOODSON'S TROPHY CASE

- Two-time Academic All-Big 12 First Team (2019 & 2020)

## POINTS

2020-21 Season	5, vs. Southern (11/29/20)
Career	21, vs. Florida A&M (11/18/19)

## FIELD GOALS MADE/ATTEMPTED

2020-21 Season	2, vs. Southern (11/29/20)/7, vs. Kentucky (12/3/20)
Career	8, vs. FAMU (11/18/19)/15, vs. Baylor (3/9/19)

## 3-PT. FIELD GOALS MADE/ATTEMPTED

2020-21 Season	1, vs. Southern (11/29/20)/5, vs. Southern (11/29/20)
Career	5, twice/ 11, twice

## FREE THROWS MADE/ATTEMPTED

2020-21 Season	-/-
Career	5, twice/ 6, vs. Oklahoma (1/22/20)

## REBOUNDS

2020-21 Season	5, vs. Southern (11/29/20)
Career	13, at West Virginia (1/23/19)

## ASSISTS

2020-21 Season	4, vs. Southern (11/29/20)
Career	8, at TCU (1/16/19)

## BLOCKS

2020-21 Season	1, vs. Southern (11/29/20)
Career	1, five times

## STEALS

2020-21 Season	2, vs. Kentucky (12/3/20)
Career	4, five times

## MINUTES

2020-21 Season	34, vs. Southern (11/29/20)
Career	40, 13 times

## MISCELLANEOUS CAREER STATS

Double-Figure Scoring Games	26
20+ Point Games	3
Double-Figure Rebounding Games	4
5+ Rebound Games	31
Double-Figure Assist Games	-
5+ Assist Games	13
Double-Doubles	3
2+ Block Games	-
2+ Steal Games	30
4+ Made 3-Pt. FGs	8
2+ Made 3-Pt. FGs	25

+ starts | \* Big 12 | ^ Big 12 Championships | % WNIT | \$ NCAA Tournament

## SENIOR (2020-21)

Notched five points, five rebounds, four assists and a block against Southern (11/29).

## TEXAS TECH (2018-20)

Played in 55 games with 47 starts for the Lady Raiders... Tallied 1,843 minutes of action (33.5 mpg)... Carded 525 points (9.5 ppg), 291 rebounds (5.3 rpg), 162 assists (2.9 apg) and 98 steals (1.8 spg)... In 2019-20, carded 190 points (7.9 ppg), 136 rebounds (5.7 rpg), 67 assists (2.8 apg) and 48 steals (2.0 spg)... Finished the season with a .411 field goal percentage (65-of-158), including a .281 3-point field goal percentage (25-of-89)... Carded a .729 free throw percentage (35-of-48)... Had a eight games with 10 or more points... Had six games with two or more connections from beyond the arc... Tallied a season-high of 21 points against Florida A&M (11/18/19) which included a season-high 5 three-point field goals made... In 2018-19, averaged 36.2 minutes per game and ranked third in the Big 12 for minutes played... Averaged 10.8 points, the third most on the team... Pulled in 5.0 rebounds, handed out 3.1 assists and pulled 1.6 steals per game... Scored double figures in 18 games and recorded two double-doubles... Shot 37.4 percent from the three-point line, ranking first on the team and sixth in the Big 12.

## REDSHIRT SEASON (2017-18)

Sat out due to NCAA Transfer rules.

## ARIZONA STATE (2016-17)

Saw action in 27 games, including 16 Pac 12 games... Tallied 230 minutes played (8.5 mpg)... Scored 68 points (2.5 ppg), pulled in 12 rebounds (0.4 rpg) and dished 14 assists (0.5 apg)... Recorded a .385 shooting average and shot .350 from beyond the arc... Pocketed six steals... Shot .359 from the field and .360 from the arc in league action.

## GOODSON'S CAREER STATISTICS

YEAR	G-GS	MIN-AVG.	FGM-FGA	PCT	3PT-A	PCT	FTM-FTA	PCT	O-D-T	AVG	PF-D	A	TO	BLK	ST	PTS-AVG
2016-17 (ASU)	27-0	230-8.5	25-65	.385	14-40	.350	4-5	.800	6-6-12	0.4	14-0	14	9	0	6	68-2.5
2017-18 (TTU)																
DNP - NCAA Transfer Rules																
2018-19 (TTU)	31-26	1122-36.2	111-287	.387	65-174	.374	48-61	.787	52-103-155	5.0	65-0	95	82	3	50	335-10.8
2019-20 (TTU)	24-21	721-30.0	65-158	.411	25-89	.281	35-48	.729	48-88-136	5.7	50-1	67	51	1	48	190-7.9
2020-21 (K-State)	2-2	67-33.5	3-13	.231	1-8	.125	0-0	.000	0-7-7	3.5	3-0	6	8	1	3	7-3.5
<b>TOTAL</b>	<b>84-49</b>	<b>2138-25.5</b>	<b>204-523</b>	<b>.390</b>	<b>105-311</b>	<b>.338</b>	<b>87-114</b>	<b>.763</b>	<b>106-204-310</b>	<b>3.7</b>	<b>132-1</b>	<b>182</b>	<b>150</b>	<b>5</b>	<b>107</b>	<b>600-7.1</b>



# 10 | JADA THORPE

G | 5-9 | R-FR. - SQ | CHICAGO, ILL. (SIMEON CAREER ACADEMY)

• Third player in program history to join K-State from Chicago, joining current Wildcat Cymone Goodrich and former Wildcat Sharon Carr (1982-83).

## 2020-21 GAME-BY-GAME

Opponent	Min	FG	3FG-3FGA	FT-FTA	O-D-Reb	PF	A	TO	Bk	St	Pts
Southern	1	0-0	0-0	0-0	0-0-0	0	0	0	0	0	0
Kentucky					DNP - Coach's Decision						
at Central Arkansas											
Idaho State											
South Dakota State											
Omaha											
Kansas City											
at Iowa State *											
Texas *											
at Oklahoma *											
West Virginia *											
at Baylor *											
TCU *											
Oklahoma State *											
at West Virginia *											
at Kansas *											
Iowa State *											
Oklahoma *											
at Texas Tech *											
Baylor *											
at TCU *											
Kansas *											
at Oklahoma State *											
at Texas *											
Texas Tech *											

+ starts | \* Big 12 | ^ Big 12 Championships | % WNIT | \$ NCAA Tournament

## THORPE'S TROPHY CASE

- 2019-20 Big 12 Academic All-Rookie Team
- Fall 2019 Big 12 Commissioner's Honor Roll

## POINTS

2020-21 Season	-
Career	-

## FIELD GOALS MADE/ATTEMPTED

2020-21 Season	-/-
Career	-/-

## 3-PT. FIELD GOALS MADE/ATTEMPTED

2020-21 Season	-/-
Career	-/-

## FREE THROWS MADE/ATTEMPTED

2020-21 Season	-/-
Career	-/-

## REBOUNDS

2020-21 Season	-
Career	-

## ASSISTS

2020-21 Season	-
Career	-

## BLOCKS

2020-21 Season	-
Career	-

## STEALS

2020-21 Season	-
Career	-

## MINUTES

2020-21 Season	1, vs. Southern (11/29/20)
Career	1, vs. Southern (11/29/20)

## MISCELLANEOUS CAREER STATS

Double-Figure Scoring Games	-
20+ Point Games	-
Double-Figure Rebounding Games	-
5+ Rebound Games	-
Double-Figure Assist Games	-
5+ Assist Games	-
Double-Doubles	-
2+ Block Games	-
2+ Steal Games	-
4+ Made 3-Pt. FGs	-
2+ Made 3-Pt. FGs	-

## REDSHIRT FRESHMAN (2020-21)

Saw her first career action against Southern (11/29).

## FRESHMAN (2019-20)

Missed the season due to injury.

## HIGH SCHOOL

Prospects Nation Watch List for Class of 2019... Played in the 2019 Riverwar Missouri vs. Illinois Girls All-Star Game... 2016-17 *Chicago Tribune* Players to Watch... 2015-16 IBCA Class 3A/4A Special Mention All-State... Played one season with Simeon Career Academy... Tallied 16.8 points, 4.2 rebounds, 6.5 assists, 4.5 steals and 3.7 blocks with the Wolverines... In the 2017-18 season, she played for Montverde Academy in Montverde, Florida... Helped the program to a 18-3 record and a state tournament title... Averaged 16.6 points, five assists and two rebounds for the Eagles... Played her first two high school seasons with North Lawndale High School in Chicago... She helped the program to a 43-11 overall record and a state runner-up finish in 2015-16. In her freshman year, Thorpe averaged 14.6 points, five assists and three rebounds per game and was named to the 2015-16 Illinois Basketball Coaches Association (IBCA) Class 3A/4A Special Mention All-State Team... In her sophomore year, helped the program to a city runner-up finish, she averaged 15.3 points, 4.6 assists and 3.4 rebounds.

## THORPE'S CAREER STATISTICS

YEAR	G-GS	MIN-AVG.	FGM-FGA	PCT	3PT-A	PCT	FTM-FTA	PCT	O-D-T	AVG	PF-D	A	TO	BLK	ST	PTS-AVG
2019-20																
2020-21	1-0	1-1.0	0-0	.000	0-0	.000	0-0	.000	0-0-0	0.0	0-0	0	0	0	0	0
TOTAL	1-0	1-1.0	0-0	.000	0-0	.000	0-0	.000	0-0-0	0.0	0-0	0	0	0	0	0

+ + + + +



# 12 | RACHEL RANKE

G | 6-1 | R-JR. - 2L | BURNSVILLE, MINN. (EASTVIEW HS)

## 2020-21 Preseason All-Big 12 Team - Honorable Mention

- 12th player in program history from the state of Minnesota and the first since 2013 (Brittany Chambers).

### CAREER

Eighth on the K-State career list for 3-point field goals made (177)... Eighth in program history for three-point field goal attempts (556)... Holds school record for career 3-point field goals made by a player 6'0" or taller.

### RANKE'S TROPHY CASE

- 2020-21 Preseason All-Big 12 Team (Honorable Mention)
- 2019-20 Preseason All-Big 12 Team (Honorable Mention)
- Won 2019 Red Bull USA 3X East Regional
- 2019 1st Infantry Division Sustainment Brigade Tammie Romstad Durable Award
- 2018 Big 12 All-Freshman Team
- 2018 Waco Tribune Big 12 All-Freshman Team
- 2018 Most Improved Award
- Three-time Big 12 Freshman of the Week (2017-18)

### POINTS

2020-21 Season	12, vs. Kentucky (12/3/20)
Career	26, at Texas Tech (2/26/18)

### FIELD GOALS MADE/ATTEMPTED

2020-21 Season	5, vs. Kentucky (12/3/20)/12, vs. Kentucky (12/3/20)
Career	9, at Texas Tech (2/26/18)/ 20, vs. West Virginia (3/9/19)

### 3-PT. FIELD GOALS MADE/ATTEMPTED

2020-21 Season	2, vs. Kentucky (12/3/20)/7, vs. Kentucky (12/3/20)
Career	8, at Oklahoma (2/10/19)/ 15, vs. Chicago St. (12/18/17)

### FREE THROWS MADE/ATTEMPTED

2020-21 Season	1, vs. Southern (11/29/20)/2, vs. Southern (11/29/20)
Career	6, at Little Rock (12/8/18)/ 7, at Little Rock (12/8/18)

### REBOUNDS

2020-21 Season	4, vs. Kentucky (12/3/20)
Career	10, vs. Saint Louis (3/15/18)

### ASSISTS

2020-21 Season	3, vs. Kentucky (12/3/20)
Career	6, vs. Oklahoma (1/5/19)

### BLOCKS

2020-21 Season	-
Career	2, three times

### STEALS

2020-21 Season	1, vs. Kentucky (12/3/20)
Career	5, vs. UT Arlington (12/6/17)

### MINUTES

2020-21 Season	27, vs. Kentucky (12/3/20)
Career	40, vs. North Texas (11/16/18)

### MISCELLANEOUS CAREER STATS

Double-Figure Scoring Games	44
20+ Point Games	7
Double-Figure Rebounding Games	1
Double-Doubles	1
5+ Rebound Games	17
5+ Assist Games	2
5+ Steal Games	1
2+ Steal Games	23
2+ Block Games	3
4+ Made 3-Pt. FGs	16
2+ Made 3-Pt. FGs	46

### 2020-21 GAME-BY-GAME

Opponent	Min	FG	3FG-3FGA	FT-FTA	O-D-Reb	PF	A	TO	Bk	St	Pts
Southern	19	3-10	0-6	1-2	0-1-1	1	2	1	0	0	7
Kentucky	27	5-12	2-7	0-0	1-3-4	2	3	2	0	1	12
at Central Arkansas											
Idaho State											
South Dakota State											
Omaha											
Kansas City											
at Iowa State *											
Texas *											
at Oklahoma *											
West Virginia *											
at Baylor *											
TCU *											
Oklahoma State *											
at West Virginia *											
at Kansas *											
Iowa State *											
Oklahoma *											
at Texas Tech *											
Baylor *											
at TCU *											
Kansas *											
at Oklahoma State *											
at Texas *											
Texas Tech *											

+ starts | \* Big 12 | ^ Big 12 Championships | % WNIT | \$ NCAA Tournament

### RANKE WITH RANGE

- Guard **Rachel Ranke** continues to be a threat for the Wildcats from beyond the three-point line.
- For her career, Ranke has made 177 three-point field goals and ranks eighth on the K-State career 3-point field goals made list. She also ranks eighth in program history for career 3-point field goals attempted with 556.
- Last season, Ranke is shooting 15-of-42 (.357) from 3-point range. She is averaging 1.9 connections from deep per game.
- In the 2018-19 season, Ranke led the team with 71 three-point field goals made. Ranke ranked fourth in program history for 3-point field goals made by a sophomore.
- She ranked fourth in the Big 12 in 3-point field goals made per game (2.2) and 12th in the league in 3-point field goal percentage (.318).
- Since the 2000-01 season, Ranke made the second-most 3-point field goals in the first two seasons of a K-State career with 160 conversions.
- Ranke holds the school record for 3-point field goals made by a player 6'0" or taller in school history.

### CAREER 3-POINT FIELD GOALS MADE

1. Laurie Koehn (2001-05) .....	392*
2. Brittany Chambers (2009-13) .....	350 ^
3. Kim Woodlee (1997-01) .....	285
4. Kristin Rethman (1998-02) .....	266
5. Kindred Wesemann (2013-17) .....	264
6. Kimberly Dietz (2004-08) .....	230
7. Claire Coggins (2003-07) .....	185
8. <b>Rachel Ranke (2017-present) .....</b>	<b>177</b>
9. Missy Decker (1993-97) .....	176
10. Bri Craig (2012-16) .....	161

\* - ranks tied for 4th in NCAA Division I history

^ - ranks 22nd in NCAA Division I history

### PLAYERS 6'0" OR TALLER W/ 100+ 3-PT FGS MADE - CAREER

Rk.	Player (Years) .....	3-Pt FGS .....	Height .....
1.	<b>Rachel Ranke (2017-present) .....</b>	<b>177 .....</b>	<b>6'1" .....</b>
2.	Kaylee Page (2015-18) .....	151 .....	6'2" .....
3.	<b>Christianna Carr (2018-present) ...</b>	<b>118 .....</b>	<b>6'1" .....</b>
4.	Megan Mahoney (2001-05) .....	117 .....	6'0" .....
5.	Ashley Sweat (2006-10) .....	110 .....	6'2" .....

# 179

Ranke needs 179 points to become the 43rd player in program history to score 1,000 or more points in her career.



64.7

**Rachel Ranke** has poured in 177 three-point field goals during her career with the Wildcats (2.3 pg; 77 games).

- Of her 821 career points scored, 64.7 percent have come from behind the 3-point line including a 55.6 percent in 2018-19.

### REBOUNTING RANKE

- Guard **Rachel Ranke** has attacked the glass to begin the 2019-20 season.
- She averaged 3.3 rebounds per game and pulled in six boards against UIC on November 11.
- When Ranke collects five or more rebounds and makes four or more 3-point field goals in a game, K-State is 4-1. She achieved this feat three times in her freshman season, once in the 2018-19 season and once this season.
- In K-State history, Ranke leads all players 6'0" and taller for career games with five or more rebounds and four or more made 3-point field goals.
- For her career, Ranke has 17 career games with five or more rebounds.

### K-STATE PLAYERS 6'0"+ W/ 5+ REBS & 4+ 3-PT FGS MADE

Rk.	Player (Years)	Games	Height
1.	<b>Rachel Ranke (2017-present)</b>	5	6'1"
2.	Kaylee Page (2015-18)	4	6'2"
3.	Megan Mahoney (2001-05)	2	6'0"
	<b>Christianna Carr (2018-present)</b>	2	6'1"

### RANKE RADIOACTIVE IN OKLAHOMA

- **Rachel Ranke** enjoyed her four games in the state of Oklahoma last season. In the four games (at Oklahoma, at Oklahoma State and two games in the Big 12 Championship in Oklahoma City), she was a combined 18-of-38 from beyond the arc and averaged 17.8 points.
- Ranke made more 3-point field goals in the state of Oklahoma among visiting Big 12 teams than any player on the seven other teams in the league.
- On February 10 at Oklahoma, Ranke was 8-of-14 from beyond the arc against the Sooners and tied the school record for 3-point field goals made in a conference game with Kindred Wesemann (vs. Texas, 2/4/15).
- Ranke's eight 3-pointers are tied for fourth in program history. She is the first player in program history to make eight or more 3-point field goals in a road game.
- Ranke's eight 3-pointers are tied for the second most by a Big 12 player this season and were the most in a league game this season.
- At Oklahoma State on March 4, Ranke finished 4-of-6 from beyond the arc which was her 13th career game with four or more connections from behind the arc.
- Against West Virginia on March 9 in the quarterfinals of the Big 12 Championship in Oklahoma City, she tallied 21 points with a 4-of-12 effort from deep.

### 3-POINT FIELD GOALS MADE - SINGLE GAME

1.	Laurie Koehn, vs. Iowa (1/5/03)	10
2.	Shawnda DeCamp, vs. Detroit (11/29/93)	9
	Brittany Chambers, vs. Texas Southern (3/21/13)	9
4.	Kendra Wecker, vs. Illinois State (11/26/04)	8
	Shawnda DeCamp, vs. Ohio State (12/19/93)	8
	Brittany Chambers, vs. Northwestern (12/19/11)	8
	Kindred Wesemann, vs. Texas (2/4/15)	8
	<b>Rachel Ranke, at Oklahoma (2/10/19)</b>	8
9.	11 players: Most Recent -	
	Rachel Ranke, vs. Chicago State (12/18/17)	7

### MOST 3-POINT FGS MADE IN A CONFERENCE GAME

Kindred Wesemann, vs. Texas (2/4/15)	8
<b>Rachel Ranke, at Oklahoma (2/10/19)</b>	8

ed 329 total points (10.0 ppg) and ranked third on the team in scoring... Notched 18 games with 10 or more points... Shot 109-of-323 (.337) from the field, including a 71-of-223 (.318) from 3-point range... Her 71 three-point field goals made rank fourth in school history by a sophomore in program history... Led the team in 3-point field goals made and attempted... Made two or more 3-point field goals in a game in 22 games... Of her 329 points, 64.7 percent came from a 3-pointer... Finished 40-of-55 (.727) from the free throw line... Pulled in 109 total rebounds (3.3 rpg), including 99 on the defensive end... Handed out a career-high 41 assists (1.2 apg) and ranked third on the team... Pocketed a career-high 38 steals (1.2 spg) and ranked third on the team... Set a new career-high with 10 blocked shots... Registered 11 points, five rebounds and two steals against Omaha (11/12)... Carded 13 points, eight rebounds, one assist, one block and one steal against North Texas (11/16)... Notched 15 points, four rebounds and two steals against Princeton (11/24)... Tallied 12 points, four rebounds and two blocks against Lamar (12/5)... Recorded 17 points including a 4-of-8 effort from 3-point range with three rebounds against Central Arkansas (12/20)... Carded 19 points on 7-of-14 shooting, including 5-of-11 shooting from beyond the arc against Oklahoma (1/5)... Also added a career-high six assists and four steals against the Sooners... Tallied 10 points and three rebounds against Kansas (1/13)... Notched 11 points, three rebounds and one steal at Texas Tech (1/19)... Registered a season-high 24 points on a career-high 8-of-14 shooting from beyond the arc at Oklahoma (2/10)... Carded 11 points on 3-of-8 shooting from beyond the arc with three assists at Texas (2/17)... Recorded 11 points and six rebounds against West Virginia (2/27)... Tallied 11 points, eight rebounds, two assists and two steals against Texas Tech (3/2)... Registered 16 points on 6-of-9 shooting including a 4-of-6 effort from beyond the arc and three rebounds at Oklahoma State (3/4)... Tallied 21 points including a 4-of-12 effort from 3-point range, six rebounds and two steals against West Virginia (3/9) in the quarterfinals of the Big 12 Championships... Notched 10 points, three rebounds, three assists, three steals and a block against Baylor (3/10) in the semifinals... Tallied 11 points on 4-of-10 shooting, including a 3-of-7 effort from beyond the arc against Michigan (3/22) in the first round of the 2019 NCAA Tournament.

### REDSHIRT JUNIOR (2020-21)

Came off the bench against Southern (11/29) and tallied seven points and two assists in 20 minutes of action... Carded 12 points, four rebounds, three assists and a steal against Kentucky (12/3).

### JUNIOR (2019-20)

2019-20 Preseason All-Big 12 honorable mention... Missed 21 games including 20 straight to end the season with an injury... Played in eight games with eight starts and recorded 196 total minutes (24.5 mpg)... Carded 81 points (10.1 ppg) on a .412 field goal percentage... Was 15-of-42 (.357) from beyond the arc... Hauled in 26 rebounds (3.3 rpg) and dished out 25 assists (3.1 apg)... Pocketed 10 steals (1.3 spg)... Tallied 11 points, four assists, three rebounds, one block and one steal against Omaha (11/8)... Registered 14 points on 4-of-9 shooting including 4-of-8 from beyond the arc, six rebounds and two steals against UIC (11/11)... Tallied 16 points, three rebounds and two steals against Oral Roberts (11/18).

### SOPHOMORE (2018-19)

2019 1st Infantry Division Sustainment Brigade Tammie Romstad Durable Award... Played in and started all 33 games... Set a new career-high with 1,077 minutes played (32.6 mpg)... Record-

### RANKE'S CAREER STATISTICS

YEAR	G-GS	MIN-AVG.	FGM-FGA	PCT	3PT-A	PCT	FTM-FTA	PCT	O-D-T	AVG	PF-D	A	TO	BLK	ST	PTS-AVG
2017-18	34-27	1072-31.5	130-380	.342	89-278	.320	43-55	.782	12-109-121	3.6	57-0	39	30	9	35	392-11.5
2018-19	33-33	1077-32.6	109-323	.337	71-223	.318	40-55	.727	10-99-109	3.3	44-0	41	57	10	38	329-10.0
2019-20	8-8	196-24.5	28-68	.412	15-42	.357	10-17	.588	3-23-26	3.3	10-0	25	14	3	10	81-10.1
2020-21	2-0	47-23.5	8-22	.364	2-13	.154	1-2	.500	1-4-5	2.5	3-0	5	3	0	1	19-9.5
<b>TOTAL</b>	<b>77-68</b>	<b>2397-31.1</b>	<b>275-793</b>	<b>.347</b>	<b>177-556</b>	<b>.318</b>	<b>94-129</b>	<b>.729</b>	<b>26-235-261</b>	<b>3.4</b>	<b>114-0</b>	<b>110</b>	<b>104</b>	<b>22</b>	<b>84</b>	<b>821-10.7</b>

+ + + + +



# 13 | LAURA MACKE

F | 6-2 | JR. - 2L | BAILEYVILLE, KAN. (NEMAHA CENTRAL HS)

## MACKE'S TROPHY CASE

- 2020 Academic All-Big 12 First Team
- 2018-19 Big 12 Academic All-Rookie Team
- Three-time Big 12 Commissioner's Honor Roll

## POINTS

2020-21 Season	8, twice
Career	11, vs. UIC (11/11/19)

## FIELD GOALS MADE/ATTEMPTED

2020-21 Season	4, vs. Southern (11/29/20)/6, vs. Kentucky (12/3/20)
Career	5, vs. UIC (11/11/19)/8, vs. UIC (11/11/19)

## 3-PT. FIELD GOALS MADE/ATTEMPTED

2020-21 Season	1, vs. Kentucky (12/3/20)/2, vs. Kentucky (12/3/20)
Career	1, seven times/5, vs. UTA (11/24/19)

## FREE THROWS MADE/ATTEMPTED

2020-21 Season	1, vs. Kentucky (12/3/20)/4, vs. Kentucky (12/3/20)
Career	3, vs. Iowa State (2/26/20)/4, twice

## REBOUNDS

2020-21 Season	4, vs. Southern (11/29/20)
Career	9, vs. UIC (11/11/19)

## ASSISTS

2020-21 Season	2, vs. Southern (11/29/20)
Career	4, vs. UIW (12/3/19)

## BLOCKS

2020-21 Season	-
Career	1, six times

## STEALS

2020-21 Season	-
Career	2, vs. West Virginia (3/9/19)

## MINUTES

2020-21 Season	27, vs. Kentucky (12/3/20)
Career	27, vs. Kentucky (12/3/20)

## MISCELLANEOUS CAREER STATS

Double-Figure Scoring Games	1
20+ Point Games	-
Double-Figure Rebounding Games	-
5+ Rebound Games	2
Double-Figure Assist Games	-
5+ Assist Games	-
Double-Doubles	-
2+ Block Games	-
2+ Steal Games	1
4+ Made 3-Pt. FGs	-
2+ Made 3-Pt. FGs	-

## 2020-21 GAME-BY-GAME

Opponent	Min	FG	3FG-3FGA	FT-FTA	O-D-Reb	PF	A	TO	Bk	St	Pts
Southern +	20	4-5	0-1	0-0	1-3-4	2	2	2	0	0	8
Kentucky +	27	3-6	1-2	1-4	2-1-3	1	1	4	0	0	8
at Central Arkansas											
Idaho State											
South Dakota State											
Omaha											
Kansas City											
at Iowa State *											
Texas *											
at Oklahoma *											
West Virginia *											
at Baylor *											
TCU *											
Oklahoma State *											
at West Virginia *											
at Kansas *											
Iowa State *											
Oklahoma *											
at Texas Tech *											
Baylor *											
at TCU *											
Kansas *											
at Oklahoma State *											
at Texas *											
Texas Tech *											

+ starts | \* Big 12 | ^ Big 12 Championships | % WNIT | \$ NCAA Tournament

## JUNIOR (2020-21)

Made her second career start and tallied eight points on 4-of-5 shooting, four rebounds and two assists against Southern (11/29)... Played a career-high 27 minutes against Kentucky (12/3) and tallied eight points, three rebounds and an assist.

## SOPHOMORE (2019-20)

Played in 29 games with one start... Tallied 239 minutes (8.2 mpg)... Scored a career season-high 57 points (2.0 ppg) and set career season-highs for field goals made and attempted (20-of-49) and free throws made and attempted (17-of-24) and free throw percentage (.708)... Pulled in 38 rebounds (1.3 rpg)... Dished out a career-high 16 assists (0.6 apg) and pocketed a career season-high six steals... Blocked four shots... Made her season debut against Omaha (11/8) and came off the bench to record four rebounds and a block in 14 minutes... Made first career start against UIC (11/11) and responded with a career-high 12 points on 5-of-8 shooting, nine rebounds, two assists, a block and a steal... Registered five points and a rebound in five minutes off the bench against Iowa State (2/26)... Tallied six points, one block and one steal at Baylor (2/29).

## FRESHMAN (2018-19)

Played in 31 games... Tallied 277 minutes played... Logged 51 total points (1.6 ppg)... Averaged 3.2 ppg in final nine games of the season... For the season, shot .543 from the field (19-of-35), including a 6-of-15 (.400) effort from the 3-point line... Tallied a 7-of-17 (.412) effort from the free throw line... Pulled in 45 total rebounds (1.5 rpg)... Handed out 11 assists... Carded four steals and two blocked shots... Made her K-State debut against Omaha (11/12) and pulled in one rebound... Carded one point and a rebound against North Texas (11/16)... Tallied two points against DePaul (11/23)... Notched two points, four rebounds and an assist against Princeton in the Cancun Challenge (11/24)... Registered two points against Vanderbilt in the SEC/Big 12 Challenge (12/2)... Tallied her first career 3-pointer at Iowa State (1/2)... Tallied four points, two rebounds and a block against Oklahoma (1/5)... Recorded four points and an assist at Baylor (1/9)... Scored four points against Baylor (2/13)... Buried a 3-pointer and pulled in a rebound at Texas (2/17)... Registered a career-high six points, tied her career-high with four rebounds and one assist and one block at TCU (2/23)... Came off the bench to tally two points and a career-high five rebounds in a career-best 22 minutes against West Virginia (2/27)... Tallied five points and two assists against Texas Tech (3/2)... Notched four points, two rebounds and a steal against Michigan (3/22) in the first round of the 2019 NCAA Tournament.

## MACKE'S CAREER STATISTICS

YEAR	G-GS	MIN-AVG.	FGM-FGA	PCT	3PT-A	PCT	FTM-FTA	PCT	O-D-T	AVG	PF-D	A	TO	BLK	ST	PTS-AVG
2018-19	31-0	277-8.9	19-35	.543	6-15	.400	7-17	.412	20-25-45	1.5	26-0	11	14	2	4	51-1.6
2019-20	29-1	239-8.2	20-49	.408	0-10	.000	17-24	.708	20-18-38	1.3	24-1	16	22	4	6	57-2.0
2020-21	2-2	46-23.0	7-11	.636	1-3	.333	1-4	.250	3-4-7	3.5	3-0	3	6	0	0	16-8.0
<b>TOTAL</b>	<b>62-3</b>	<b>562-9.1</b>	<b>46-95</b>	<b>.484</b>	<b>7-28</b>	<b>.250</b>	<b>25-45</b>	<b>.556</b>	<b>43-47-90</b>	<b>1.5</b>	<b>53-1</b>	<b>30</b>	<b>42</b>	<b>6</b>	<b>10</b>	<b>124-2.0</b>



# 23 | JADA MOORE

G | 5-11 | FR. - HS | DENVER, COLO. (REGIS JESUIT HS)

- Fifth player in program history to join K-State from Colorado, the first since Kimberly Dietz (2004-08).
- High school teammate of Stanford's Fran Belibi
- Played AAU for Colorado Premier and coached by former NBA player Keith Van Horn

## 2020-21 GAME-BY-GAME

Opponent	Min	FG	3FG-3FGA	FT-FTA	O-D-Reb	PF	A	TO	Bk	St	Pts
Southern	16	3-5	0-0	0-0	1-2-3	2	2	2	0	1	6
Kentucky					DNP - Injured						
at Central Arkansas											
Idaho State											
South Dakota State											
Omaha											
Kansas City											
at Iowa State *											
Texas *											
at Oklahoma *											
West Virginia *											
at Baylor *											
TCU *											
Oklahoma State *											
at West Virginia *											
at Kansas *											
Iowa State *											
Oklahoma *											
at Texas Tech *											
Baylor *											
at TCU *											
Kansas *											
at Oklahoma State *											
at Texas *											
Texas Tech *											

## POINTS

2020-21 Season	6, vs. Southern (11/29/20)
Career	6, vs. Southern (11/29/20)

## FIELD GOALS MADE/ATTEMPTED

2020-21 Season	3, vs. Southern (11/29/20)/ 5, vs. Southern (11/29/20)
Career	3, vs. Southern (11/29/20)/ 5, vs. Southern (11/29/20)

## 3-PT. FIELD GOALS MADE/ATTEMPTED

2020-21 Season	-/-
Career	-/-

## FREE THROWS MADE/ATTEMPTED

2020-21 Season	-/-
Career	-/-

## REBOUNDS

2020-21 Season	3, vs. Southern (11/29/20)
Career	3, vs. Southern (11/29/20)

## ASSISTS

2020-21 Season	2, vs. Southern (11/29/20)
Career	2, vs. Southern (11/29/20)

## BLOCKS

2020-21 Season	-
Career	-

## STEALS

2020-21 Season	1, vs. Southern (11/29/20)
Career	1, vs. Southern (11/29/20)

## MINUTES

2020-21 Season	16, vs. Southern (11/29/20)
Career	16, vs. Southern (11/29/20)

## MISCELLANEOUS CAREER STATS

Double-Figure Scoring Games	-
20+ Point Games	-
Double-Figure Rebounding Games	-
5+ Rebound Games	-
Double-Figure Assist Games	-
5+ Assist Games	-
Double-Doubles	-
4+ Steal Games	-
2+ Steal Games	-
4+ Made 3-Pt. FGs	-
2+ Made 3-Pt. FGs	-

+ starts | \* Big 12 | ^ Big 12 Championships | % WNIT | \$ NCAA Tournament

## FRESHMAN (2020-21)

Came off the bench to register six points, three rebounds, two assists and a steal in 16 minutes of action against Southern (11/29).

## HIGH SCHOOL

Ranked as the 58th guard in the nation by ESPN/Hoopgurlz for the Class of 2020... 2020 All-Class 5A CHSAA Second Team... 2020 McDonald's All-American Game nominee... 2020 Continental League Player of the Year... Averaged 17.6 points, 8.8 rebounds, 3.0 assists and 3.4 steals in her senior season... Three-time All-Continental League First Team honors... 2017 All-Continental League Second Team honor... Helped Regis Jesuit HS to pair of state Class 5A semifinal appearances... Scored over 1,000 points... Two-time A-Town All-Star Game selection.

## MOORE'S CAREER STATISTICS

YEAR	G-GS	MIN-AVG.	FGM-FGA	PCT	3PT-A	PCT	FTM-FTA	PCT	O-D-T	AVG	PF-D	A	TO	BLK	ST	PTS-AVG
2020-21	1-0	16-16.0	3-5	.600	0-0	.000	0-0	.000	1-2-3	3.0	2-0	2	2	0	1	6-6.0
TOTAL	1-0	16-16.0	3-5	.600	0-0	.000	0-0	.000	1-2-3	3.0	2-0	2	2	0	1	6-6.0

+ + + + +



# 24 | EMILEE EBERT

G | 6-0 | SO. - 1L | FRANKFORT, KAN. (FRANKFORT HS)

## 2020-21 GAME-BY-GAME

Opponent	Min	FG	3FG-3FGA	FT-FTA	O-D-Reb	PF	A	TO	Bk	St	Pts
Southern +	26	2-5	0-2	0-0	0-4-4	3	6	1	4	1	4
Kentucky +	35	1-1	1-1	0-0	0-4-4	2	2	3	1	0	3
at Central Arkansas											
Idaho State											
South Dakota State											
Omaha											
Kansas City											
at Iowa State *											
Texas *											
at Oklahoma *											
West Virginia *											
at Baylor *											
TCU *											
Oklahoma State *											
at West Virginia *											
at Kansas *											
Iowa State *											
Oklahoma *											
at Texas Tech *											
Baylor *											
at TCU *											
Kansas *											
at Oklahoma State *											
at Texas *											
Texas Tech *											

## EBERT'S TROPHY CASE

- 2019-20 Big 12 Academic All-Rookie Team
- Fall 2019 Big 12 Commissioner's Honor Roll

## POINTS

2020-21 Season	4, vs. Southern (11/29/20)
Career	6, twice

## FIELD GOALS MADE/ATTEMPTED

2020-21 Season	2, vs. Southern (11/29/20)/5, vs. Southern (11/29/20)
Career	2, five times/ 6, vs. Oklahoma (1/25/20)

## 3-PT. FIELD GOALS MADE/ATTEMPTED

2020-21 Season	1, vs. Kentucky (12/3/20)/2, vs. Southern (11/29/20)
Career	2, at Oklahoma State (3/3/20)/ 3, twice

## FREE THROWS MADE/ATTEMPTED

2020-21 Season	-/-
Career	1, twice/ 2, at Oklahoma (2/16/20)

## REBOUNDS

2020-21 Season	4, twice
Career	4, twice

## ASSISTS

2020-21 Season	6, vs. Southern (11/29/20)
Career	6, vs. Southern (11/29/20)

## BLOCKS

2020-21 Season	4, vs. Southern (11/29/20)
Career	4, vs. Southern (11/29/20)

## STEALS

2020-21 Season	1, vs. Southern (11/29/20)
Career	1, three times

## MINUTES

2020-21 Season	35, vs. Kentucky (12/3/20)
Career	35, vs. Kentucky (12/3/20)

## MISCELLANEOUS CAREER STATS

Double-Figure Scoring Games	-
20+ Point Games	-
Double-Figure Rebounding Games	-
5+ Rebound Games	-
Double-Figure Assist Games	-
5+ Assist Games	1
Double-Doubles	-
4+ Block Games	1
2+ Block Games	1
2+ Steal Games	-
4+ Made 3-Pt. FGs	-
2+ Made 3-Pt. FGs	1

+ starts | \* Big 12 | ^ Big 12 Championships | % WNIT | \$ NCAA Tournament

## FRESHMAN (2019-20)

Made her first career start and responded with career-highs of four rebounds, six assists, four blocks and a steal in 26 minutes of action against Southern (11/29)... Also added four points on 2-of-5 shooting.

## FRESHMAN (2019-20)

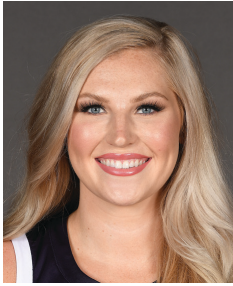
Tallied 24 games with 199 minutes played (8.3 mpg)... Notched 35 points (1.5 ppg), 15 rebounds (0.6 rpg) and 16 assists (0.7 apg)... Tallied a field goal percentage of .368 (14-of-38) including a .364 three-point field goal percentage (4-of-11)... Was 3-of-8 from the free throw line... Pocketed three steals... Made her K-State debut against Memphis (11/29)... Notched her first career assist against Michigan State (11/30)... Scored her first career points with a layup against UIW (12/3)... Carded four points and three assists against UTRGV (12/28)... Registered six points and an assist against Oklahoma (1/25)... Tallied four points, two rebounds and a steal at Texas (2/22)... Tied her career-high with six points in seven minutes with 2-of-3 shooting from beyond the arc at Oklahoma State (3/3).

## EBERT'S CAREER STATISTICS

YEAR	G-GS	MIN-AVG.	FGM-FGA	PCT	3PT-A	PCT	FTM-FTA	PCT	O-D-T	AVG	PF-D	A	TO	BLK	ST	PTS-AVG
2019-20	24-0	199-8.3	14-38	.368	4-11	.364	3-8	.375	1-14-15	0.6	10-0	16	17	0	3	35-1.5
2020-21	2-2	60-30.0	3-6	.500	1-3	.333	0-0	.000	0-8-8	4.0	5-0	8	4	5	1	7-3.5
<b>TOTAL</b>	<b>26-2</b>	<b>259-10.0</b>	<b>17-44</b>	<b>.386</b>	<b>5-14</b>	<b>.357</b>	<b>3-8</b>	<b>.375</b>	<b>1-22-23</b>	<b>0.9</b>	<b>15-0</b>	<b>24</b>	<b>21</b>	<b>5</b>	<b>4</b>	<b>42-1.6</b>

+ + + + + +





# 33 | ASHLEY RAY

C | 6-4 | R-JR. - 2L | GIRARD, KAN. (GIRARD HS)

- Shortest last name in program history.

## RAY'S TROPHY CASE

- Spring 2019 Big 12 Commissioner's Honor Roll
- 2019 Student-Athlete Development Award

## POINTS

2020-21 Season	2, vs. Kentucky (12/3/20)
Career	9, twice

## FIELD GOALS MADE/ATTEMPTED

2020-21 Season	1, vs. Kentucky (12/3/20)/2, vs. Kentucky (12/3/20)
Career	4, twice/ 6, vs. Chicago St. (12/18/17)

## 3-PT. FIELD GOALS MADE/ATTEMPTED

2020-21 Season	-/-
Career	-/-

## FREE THROWS MADE/ATTEMPTED

2020-21 Season	-/-
Career	4, vs. SFA (11/10/17)/ 4, four times

## REBOUNDS

2020-21 Season	2, vs. Kentucky (12/3/20)
Career	7, vs. Chicago State (12/18/17)

## ASSISTS

2020-21 Season	1, twice
Career	1, seven times

## BLOCKS

2020-21 Season	1, vs. Kentucky (12/3/20)
Career	3, at Iowa State (1/2/19)

## STEALS

2020-21 Season	-
Career	1, five times

## MINUTES

2020-21 Season	10, vs. Kentucky (12/3/20)
Career	18, twice

## MISCELLANEOUS CAREER STATS

Double-Figure Scoring Games	0
20+ Point Games	0
Double-Figure Rebounding Games	0
Double-Doubles	0
5+ Rebound Games	2
5+ Assist Games	0
2+ Steal Games	0
2+ Block Games	4

## 2020-21 GAME-BY-GAME

Opponent	Min	FG	3FG-3FGA	FT-FTA	O-D-Reb	PF	A	TO	Bk	St	Pts
Southern	4	0-0	0-0	0-0	0-0-0	0	1	0	0	0	0
Kentucky	10	1-2	0-0	0-0	1-1-2	0	1	0	1	0	2
at Central Arkansas											
Idaho State											
South Dakota State											
Omaha											
Kansas City											
at Iowa State *											
Texas *											
at Oklahoma *											
West Virginia *											
at Baylor *											
TCU *											
Oklahoma State *											
at West Virginia *											
at Kansas *											
Iowa State *											
Oklahoma *											
at Texas Tech *											
Baylor *											
at TCU *											
Kansas *											
at Oklahoma State *											
at Texas *											
Texas Tech *											

+ starts | \* Big 12 | ^ Big 12 Championships | % WNIT | \$ NCAA Tournament

## SENIOR (2020-21)

Saw her first action of the season against Southern (11/29) and dished out an assist in four minutes... Came off the bench (12/3) against Kentucky and tallied two points, two rebounds and a block in 10 minutes.

## JUNIOR (2019-20)

Missed final 21 games of the season with an injury... Played in eight games with 53 minutes played (6.6 mpg)... Carded four points (0.5 ppg), eight rebounds (1.0 rpg), two assists (0.3 apg) and two blocks (0.3 bpg)... Pulled in a season-high four rebounds against UIC (11/11).

## SOPHOMORE (2018-19)

Played in a career-high 33 games and made a career-high four starts... All four starts came in Big 12 play... Logged a career-high 251 minutes of action (7.6 mpg)... Tallied 41 points (1.2 ppg)... Notched a career-high 18 made field goals and a career-best field goal percentage (18-of-42; .429)... Pulled in a career-high 37 rebounds (1.1 rpg)... Blocked seven shots (0.2 bpg) and pocketed four steals... Carded four points and three rebounds against DePaul (11/23)... Added two points and two rebounds against Lamar (12/5)... Tallied four points and an assist against Central Arkansas (12/20)... Recorded five points, two rebounds, one block and one steal in 12 minutes off the bench against Northern Iowa (12/29)... Tallied four points, five rebounds and a career-high three blocks at Iowa State (1/2)... Registered five points, two rebounds, one assist and a steal against Oklahoma (1/5)... Made her first start of the season against Texas (1/16) and responded with five points and two rebounds in 16 minutes.

## RAY'S CAREER STATISTICS

YEAR	G-GS	MIN-AVG.	FGM-FGA	PCT	3PT-A	PCT	FTM-FTA	PCT	O-D-T	AVG	PF-D	A	TO	BLK	ST	PTS-AVG
2017-18	31-3	230-7.4	16-39	.410	0-0	.000	11-27	.407	12-20-32	1.0	39-2	1	17	12	5	43-1.4
2018-19	33-4	251-7.6	18-42	.429	0-0	.000	5-10	.500	14-23-37	1.1	35-0	2	16	7	4	41-1.2
2019-20	8-0	53-6.6	2-6	.333	0-0	.000	0-6	.000	0-8-8	1.0	3-0	2	3	2	0	4-0.5
2020-21	2-0	14-7.0	1-2	.500	0-0	.000	0-0	.000	1-1-2	1.0	0-0	2	0	1	0	2-1.0
<b>TOTAL</b>	<b>74-7</b>	<b>548-7.4</b>	<b>37-89</b>	<b>.416</b>	<b>0-0</b>	<b>.000</b>	<b>16-43</b>	<b>.372</b>	<b>27-52-79</b>	<b>1.1</b>	<b>77-2</b>	<b>7</b>	<b>36</b>	<b>22</b>	<b>9</b>	<b>90-1.2</b>

+ + + + +



# 41 | TAYLOR LAUTERBACH

C | 6-7 | FR. - HS | APPLETON, WIS. (APPLETON WEST HS)

- Tallest player in program history
- Third player in program history from the state of Wisconsin.

## 2020-21 GAME-BY-GAME

Opponent	Min	FG	3FG-3FGA	FT-FTA	O-D-Reb	PF	A	TO	Bk	St	Pts
Southern	9	2-3	0-1	0-2	1-2-3	2	0	0	0	0	4
Kentucky	16	1-2	0-0	1-1	1-4-5	2	0	1	0	0	3
at Central Arkansas											
Idaho State											
South Dakota State											
Omaha											
Kansas City											
at Iowa State *											
Texas *											
at Oklahoma *											
West Virginia *											
at Baylor *											
TCU *											
Oklahoma State *											
at West Virginia *											
at Kansas *											
Iowa State *											
Oklahoma *											
at Texas Tech *											
Baylor *											
at TCU *											
Kansas *											
at Oklahoma State *											
at Texas *											
Texas Tech *											

+ starts | \* Big 12 | ^ Big 12 Championships | % WNIT | \$ NCAA Tournament

### POINTS

2020-21 Season	4, vs. Southern (11/29/20)
Career	4, vs. Southern (11/29/20)

### FIELD GOALS MADE/ATTEMPTED

2020-21 Season	2, vs. Southern (11/29/20)/ 3, vs. Southern (11/29/20)
Career	2, vs. Southern (11/29/20)/ 3, vs. Southern (11/29/20)

### 3-PT. FIELD GOALS MADE/ATTEMPTED

2020-21 Season	-/ 1, vs. Southern (11/29/20)
Career	-/ 1, vs. Southern (11/29/20)

### FREE THROWS MADE/ATTEMPTED

2020-21 Season	1, vs. Kentucky (12/3/20)/ 2, vs. Southern (11/29/20)
Career	1, vs. Kentucky (12/3/20)/ 2, vs. Southern (11/29/20)

### REBOUNDS

2020-21 Season	5, vs. Kentucky (12/3/20)
Career	5, vs. Kentucky (12/3/20)

### ASSISTS

2020-21 Season	-
Career	-

### BLOCKS

2020-21 Season	-
Career	-

### STEALS

2020-21 Season	-
Career	-

### MINUTES

2020-21 Season	16, vs. Kentucky (12/3/20)
Career	16, vs. Kentucky (12/3/20)

### MISCELLANEOUS CAREER STATS

Double-Figure Scoring Games	-
20+ Point Games	-
Double-Figure Rebounding Games	-
5+ Rebound Games	1
Double-Figure Assist Games	-
5+ Assist Games	-
Double-Doubles	-
4+ Steal Games	-
2+ Steal Games	-
4+ Made 3-Pt. FGs	-
2+ Made 3-Pt. FGs	-

## FRESHMAN (2020-21)

Came off the bench against Southern (11/29) and recorded four points and three rebounds in nine minutes of action... Recorded 16 minutes off the bench against Kentucky (12/3) and tallied three points and five rebounds.

## HIGH SCHOOL

Ranked 85th overall by Prospects Nation in the Class of 2020... Ranked as the 13th center in the nation by ESPNW Hoopgurlz for the Class of 2020... Ranked 13th among post players by Prospects Nation in the Class of 2020... Ranked ninth among seniors in the state of Wisconsin... 2020 McDonald's All-American Game nominee... 2020 Wisconsin Basketball Coaches Association (WBCA) D1 All-State Honorable Mention... 2020 All-Fox Valley Association First Team... 2020 All-Fox Valley Association All-Defensive Team... Registered 16.7 ppg, 11.0 rpg and 2.2 bpg in 2019-20... Two-time All-Fox Valley Association Second Team... Averaged 12.2 points, 8.6 rebounds and 2.6 blocks in 2019.

## LAUTERBACH'S CAREER STATISTICS

YEAR	G-GS	MIN-AVG.	FGM-FGA	PCT	3PT-A	PCT	FTM-FTA	PCT	O-D-T	AVG	PF-D	A	TO	BLK	ST	PTS-AVG
2020-21	2-0	25-12.5	3-5	.600	0-1	.000	1-3	.333	2-6-8	4.0	4-0	0	1	0	0	7-3.5
TOTAL	2-0	25-12.5	3-5	.600	0-1	.000	1-3	.333	2-6-8	4.0	4-0	0	1	0	0	7-3.5



# 43 | CHRISTIANNA CARR

G | 6-1 | JR. - 2L | MANHATTAN, KAN. (MANHATTAN HS)

- Seventh player in K-State WBB history from Manhattan and the first since Susie Norton in 1975-76
- Fourth player in K-State WBB history to wear #43; first since Pam Stoltz (1991-92)

## 2020-21 GAME-BY-GAME

Opponent	Min	FG	3FG-3FGA	FT-FTA	O-D-Reb	PF	A	TO	Bk	St	Pts
Southern +	30	5-11	3-7	2-2	1-3-4	0	2	2	1	1	15
Kentucky +	33	5-14	4-9	1-2	1-4-5	2	0	2	1	0	15
at Central Arkansas											
Idaho State											
South Dakota State											
Omaha											
Kansas City											
at Iowa State *											
Texas *											
at Oklahoma *											
West Virginia *											
at Baylor *											
TCU *											
Oklahoma State *											
at West Virginia *											
at Kansas *											
Iowa State *											
Oklahoma *											
at Texas Tech *											
Baylor *											
at TCU *											
Kansas *											
at Oklahoma State *											
at Texas *											
Texas Tech *											

+ starts | \* Big 12 | ^ Big 12 Championships | % WNIT | \$ NCAA Tournament

## CARR'S TROPHY CASE

- Won 2019 Red Bull USA 3X East Regional
- 2019 Big 12 All-Freshman Team
- 2019 *Waco Tribune* Big 12 All-Freshman Team
- Two-time USBWA National Freshman of the Week (1/22 & 3/5)
- Two-time Big 12 Freshman of the Week (1/21 & 3/4)

## POINTS

2020-21 Season	15, twice
Career	24, vs. Oral Roberts (11/18/19)

## FIELD GOALS MADE/ATTEMPTED

2020-21 Season	5, twice/14, vs. Kentucky (12/3/20)
Career	8, vs. Michigan (3/22/19)/ 20, vs. Michigan (3/22/19)

## 3-PT. FIELD GOALS MADE/ATTEMPTED

2020-21 Season	4, vs. Kentucky (12/3/20)/9, vs. Kentucky (12/3/20)
Career	5, twice/ 13, twice

## FREE THROWS MADE/ATTEMPTED

2020-21 Season	2, vs. Southern (11/29/20)/2, twice
Career	7, vs. ORU (11/18/19)/ 8, three times

## REBOUNDS

2020-21 Season	5, vs. Kentucky (12/3/20)
Career	7, twice

## ASSISTS

2020-21 Season	2, vs. Southern (11/29/20)
Career	4, three times

## BLOCKS

2020-21 Season	1, twice
Career	3, vs. West Virginia (3/9/19)

## STEALS

2020-21 Season	1, vs. Southern (11/29/20)
Career	4, vs. UTRGV (12/28/19)

## MINUTES

2020-21 Season	33, vs. Kentucky (12/3/20)
Career	43, at Oklahoma (2/16/20)

## MISCELLANEOUS CAREER STATS

Double-Figure Scoring Games	27
20+ Point Games	8
Double-Figure Rebounding Games	-
Double-Doubles	-
5+ Rebound Games	10
5+ Assist Games	-
2+ Block Games	2
4+ Steal Games	1
2+ Steal Games	8
4+ Made 3-Pt. FGs	12
2+ Made 3-Pt. FGs	32

## CARR WITH 3 ON THE FLOOR

- Christianna Carr opened the 2020-21 season with a pair of 15-point games.
- Carr is shooting 40.0 percent from the field to begin the season and is better from beyond the arc, as she has tallied a 43.8 percent effort (7-of-16) from 3-point range.
- In her career, Carr has made 118 three-pointers. The product of Manhattan, Kansas, is the 21st player in school history with 100 or more career 3-point field goals made and the seventh to do so by the conclusion of her sophomore season.
- Carr has 32 career games with two or more 3-point field goals made including 12 games with four or more and a career-high of five twice.
- Carr ranks third for 3-point field goals made by a player 6'0" or taller in school history.
- In the 2019-20 season, averaged 9.8 points and pulled in 2.8 rebounds. She shot 28.2 percent (55-of-195) from beyond the arc. She ranked seventh in the Big 12 for 3-point field goals made per game (1.90).
- At Kansas, Carr recorded her eighth career game with 20 or more points with 20. She buried four 3-point field goals against the Jayhawks. In total against Kansas last season, Carr made eight 3-point field goals.

## PLAYERS 6'0" OR TALLER W/ 100+ 3-PT FGs MADE - CAREER

Rk.	Player (Years)	3-Pt FGs	Height
1.	Rachel Ranke (2017-present)	177	6'1"
2.	Kaylee Page (2015-18)	151	6'2"
3.	Christianna Carr (2018-present)	118	6'1"
4.	Megan Mahoney (2001-05)	117	6'0"
5.	Ashley Sweat (2006-10)	110	6'2"

## JUNIOR (2020-21)

Tallied 15 points on 5-of-11 shooting including 3-of-7 from deep against Southern (11/29)... Notched a team-high 15 points on 5-of-14 shooting including 4-of-9 from beyond the arc with five rebounds and a block against Kentucky (12/3).

## SOPHOMORE (2019-20)

Played in and started all 29 games... Logged 792 minutes of action (27.3 mpg)... Finished with 283 points (9.8 ppg), 81 rebounds (2.8 rpg), a career season-high 50 assists (1.7 apg), 16 steals (0.6 spg) and nine blocks... Shot .297 from the field (94-of-316) including .282 from beyond the arc (55-of-195)... Set a new career season-high for 3-point field goals attempted... Ninth player in program history to register 50 or more 3-point field goals made and 50 assists in a sophomore season... Shot .714 from the free throw line (40-of-56)... Had 13 games with 10 or more points... Made two or more 3-pointers in a game 17 times... Had six games with five or more rebounds... Notched 15 points, five rebounds and two blocks against Omaha (11/8)... Carded 20 points on 7-of-13 shooting and six rebounds against UIC (11/11)... Registered a career-high 24 points on 6-of-12 shooting from the field including 5-of-7 from beyond the arc against Oral Roberts (11/18)... Carded 15 points and three assists against UT Arlington (11/24)... Tallied 20 points and a career-high four steals against UTRGV (12/28)... Notched 10 points, three rebounds and two steals against Texas (1/19)... Tallied 20 points on 7-of-15 shooting including 4-of-9 from deep at Kansas (1/29).

## CARR'S CAREER STATISTICS

YEAR	G-GS	MIN-AVG.	FGM-FGA	PCT	3PT-A	PCT	FTM-FTA	PCT	O-D-T	AVG	PF-D	A	TO	BLK	ST	PTS-AVG
2018-19	33-31	967-29.3	109-339	.322	56-194	.289	51-71	.718	22-69-91	2.8	81-1	24	68	14	30	325-9.8
2019-20	29-29	792-27.3	94-316	.297	55-195	.282	40-56	.714	12-69-81	2.8	57-0	50	66	9	16	283-9.8
2020-21	2-2	63-31.5	10-25	.400	7-16	.438	3-4	.750	2-7-9	4.5	2-0	2	4	2	1	30-15.0
<b>TOTAL</b>	<b>64-62</b>	<b>1822-28.5</b>	<b>213-680</b>	<b>.313</b>	<b>118-405</b>	<b>.291</b>	<b>94-131</b>	<b>.718</b>	<b>36-145-181</b>	<b>2.8</b>	<b>140-1</b>	<b>76</b>	<b>138</b>	<b>25</b>	<b>47</b>	<b>638-10.0</b>

+ + + + +



# 50 | AYOKA LEE

C | 6-6 | SO. - 1L | BYRON, MINN. (BYRON HS)

## 2021 All-America candidate | 2021 Big 12 Player of the Year candidate

- Tied with Olga Firsova (1998-00) as the second tallest player in program history
- 13th player in K-State WBB history from the state of Minnesota; joins fellow K-State teammate, Rachel Ranke
- Tied with Ashley Ray for the shortest last name in program history.

### CAREER

First player in program history with a 20-20 double-double in a game... Ranks eighth for career blocks (95)... Third in program history for career five-block games (8)... Ranks ninth in school history for career double-doubles (19).

### 2020-21 GAME-BY-GAME

Opponent	Min	FG	3FG-3FGA	FT-FTA	O-D-Reb	PF	A	TO	Bk	St	Pts
Southern +	28	8-15	0-0	1-2	5-4-9	1	1	0	4	0	17
Kentucky +	4	0-1	0-0	2-2	1-3-4	0	0	0	0	0	2
at Central Arkansas											
Idaho State											
South Dakota State											
Omaha											
Kansas City											
at Iowa State *											
Texas *											
at Oklahoma *											
West Virginia *											
at Baylor *											
TCU *											
Oklahoma State *											
at West Virginia *											
at Kansas *											
Iowa State *											
Oklahoma *											
at Texas Tech *											
Baylor *											
at TCU *											
Kansas *											
at Oklahoma State *											
at Texas *											
Texas Tech *											

+ starts | \* Big 12 | ^ Big 12 Championships | % WNIT | \$ NCAA Tournament

### LEE'S TROPHY CASE

- 2021 Wade Trophy Watch List
- 2021 Women's Jersey Mike's Naismith Trophy Watch List
- 2021 Wooden Award Watch List
- 2021 Lisa Leslie Award Watch List
- 2020-21 Preseason All-Big 12 Team (unanimous selection)
- 2020 Her Hoop Stats Feb 15 Freshman Team
- 2020 Big 12 Freshman of the Year
- 2020 All-Big 12 First Team
- 2020 Big 12 All-Freshman Team (unanimous selection)
- 2020 Waco Tribune Big 12 Freshman of the Year
- 2020 Waco Tribune Big 12 All-Freshman Team
- 2020 Academic All-Big 12 First Team
- Two-time USBWA National Freshman of the Week
- 12-time Big 12 Freshman of the Week
- Junkanoo Jam All-Tournament Team - Bimini Division
- Won 2019 Red Bull USA 3X East Regional
- Two-time Big 12 Commissioner's Honor Roll

### Points

2020-21 Season	17, vs. Southern (11/29/20)
Career	24, three times

### Field Goals Made/Attempted

2020-21 Season	8, vs. Southern (11/29/20)/15, vs. Southern (11/29/20)
Career	11, at Oklahoma (2/16/20)/17, twice

### 3-pt. Field Goals Made/Attempted

2020-21 Season	-/-
Career	-/-

### Free Throws Made/Attempted

2020-21 Season	2, vs. Kentucky (12/3/20)/2, twice
Career	12, at Kansas City (12/14/19)/13, at Kansas City (12/14/19)

### Rebounds

2020-21 Season	9, vs. Southern (11/29/20)
Career	20, vs. Oklahoma (1/25/20)

### Assists

2020-21 Season	1, vs. Southern (11/29/20)
Career	2, four times

### Blocks

2020-21 Season	4, vs. Southern (11/29/20)
Career	6, four times

### Steals

2020-21 Season	-
Career	3, twice

### Minutes

2020-21 Season	28, vs. Southern (11/29/20)
Career	39, at Texas (2/22/20)

### MISCELLANEOUS CAREER STATS

Double-Figure Scoring Games	28
20+ Point Games	9
Double-Figure Rebounding Games	21
20+ Rebound Games	1
Double-Doubles	19
5+ Rebound Games	30
4+ Block Games	13
2+ Block Games	24
2+ Steal Games	6

### RECORDS PILE UP FOR LEE

- Ayoka Lee set a number of K-State and Big 12 records in the 2019-20 season. The following were the marks she set:

- Big 12 & school record 12 Big 12 Freshman of the Week honors
- First 20-pt/20-reb game in school history
- Single season record for double-doubles (19)
- Single season record for consecutive double-doubles (6)
- Career record for double-doubles with 5+ blocks (7)
- Single-season record for rebounds per game (11.4)
- Single-season record for blocks per game (3.1)
- Freshman record for rebounds (331)
- Freshman record for rebounds per game (11.4)
- Freshman record for blocks (91)
- Freshman record for blocks per game (3.1)
- Freshman record for double-doubles (19)

### LEE SETS DOUBLE-DOUBLE MARK

- Ayoka Lee was a double-double machine at the start of her K-State career in 2019-20.
- The center from Byron, Minnesota, averaged a double-double in her first season with 15.7 points on a .568 field goal percentage, 11.4 rebounds and 3.1 blocks. She was one of six players in the Big 12 to average a double-double in the 2019-20 season.
- For the season, the 2020 Big 12 Freshman of the Year recipient set the school record for double-doubles in a season with 19 and ranked tied for 8th in Big 12 history for double-doubles in a single season.
- Lee is the ninth player in program history with 19 or more career double-doubles.
- With her 19 double-doubles, Lee tied for first in the Big 12 for double-doubles. She tied for first in the nation among all freshmen for double-doubles in the 2019-20 season and tied for sixth among all players nationally. Among centers in the nation, Lee ranked tied for second for double-doubles.
- Lee achieved a rare single-game milestone, as she became

the first player in program history with 20 or more points and 20 or more rebounds in the same game, achieving the feat against Oklahoma on January 25, 2020 (23 points, 20 rebounds).

- Lee set a school record with six straight double-doubles from February 8 to February 29. She is just the third player to card two or more double-double streaks of four or more games in a career.

### K-STATE DOUBLE-DOUBLES | SEASON

Rk.	Player (Seasons)	Double-Doubles
1.	Ayoka Lee (2019-20)	19
2.	Kendra Wecker (2004-05)	17
3.	Tammie Romstad (1979-80)	15
	Nicole Ohlde (2002-03)	15
5.	Peyton Williams (2018-19)	14

### LEE PUTTING THE BALL IN THE BASKET

- Ayoka Lee worked her way up the K-State freshman scoring list in 2019-20.
- Lee averaged 15.7 points (456 points) and ranked eighth in the Big 12 in scoring and was the top freshman scorer in the Big 12.
- Nationally among centers, Lee ranked fourth for points per game.
- The product of Byron, Minnesota, ranked fourth in school history for points in a freshman season.
- Lee scored in double figures in 27 games, including a streak of 22 straight. She scored 20 or more points in nine games with a career-high 24 points three times.
- Her 22 straight games was the longest streak with 10 or more points by a K-State freshman since Nicole Ohlde tallied 25 straight games in the 2000-01 season.
- In combination with her rebounds and blocks, Lee was the first freshman in program history with 400 or more points, 300 or more rebounds and 90 or more blocks in a freshman season.



## LEE ON THE BOARDS

- **Ayoka Lee** was a dominant presence on the boards to begin her career.
- Lee averaged 11.4 rebounds per game and a total of 331 rebounds in the 2019-20 season. She set the school record for rebounds in a freshman season and ranked second for rebounds in a single season in school history.
- Lee ranked second in the Big 12 on the boards and first among the league's freshmen. She ranked tied for 10th in the nation in rebounding average and second among all freshmen in NCAA Division I. Among centers in the nation, Lee ranked third for rebounds per game.
- Lee paced the Big 12 in offensive rebounds with 4.3 per game and ranked ninth in the nation among all players and first among freshmen.
- In league-only games, Lee was second in the Big 12 in rebounding at 11.7 per game. She led the league in offensive rebounds (4.2 orgp) in conference games.
- Against Oklahoma on January 25, Lee tied for the second-most rebounds in school history in a game with 20. Her 20 boards were tied for the second most in the nation by a freshman last season.
- Lee registered 10 or more rebounds in 21 games in the 2019-20 season and five or more boards in all 29 games.

## LEE ATOP UNIQUE CLUB

- **Ayoka Lee** joined and improved upon a unique club in program history.
- Lee set the school record for career double-doubles with five or more blocks with seven career games.
- According to Stats, Inc., Lee was one of three players in the nation with five or more games in the 2019-20 season with a double-double and five or more blocks in the same game. She was the only freshman in the nation with five or more games with a double-double and five or more blocks.

## LEE THE QUEEN OF THE BLOCK

- **Ayoka Lee** has established herself as one of the top shot blockers in the nation.
- Lee opened the season with four blocked shots, which is her 13th career game with four or more blocks.
- In her career, Lee has 95 career blocked shots and ranks eighth in school history for career blocks.
- She has eight career games with five or more blocks and ranks third in program history for career games with five or more blocks.
- Last season, Lee averaged a school record 3.1 blocks per game. She ranked seventh in the nation and third in the Big 12.
- She led all freshmen in the nation in blocks per game and blocks. Her total of 91 blocks ranked eighth for all classes in the nation and first among freshmen.
- With her 91 blocks, Lee set the school record for blocks in a freshman season. She is just the third player in program history with 80 or more blocks in a season.

## K-STATE CAREER 5+ BLOCK GAMES

Rk.	Player (Seasons)	Games
1.	Marlies Gipson (2005-09)	14
	Breanna Lewis (2013-17)	14
3.	<b>Ayoka Lee (2018-present)</b>	<b>8</b>
4.	Nicole Ohlde (2000-04)	6
5.	Shana Wheeler (2004-08)	3
	Peyton Williams (2016-20)	3

## LEE FINISHES PERFECT FROM THE FIELD

- **Ayoka Lee** continues to put the ball in the hoop at a high rate and is approaching the K-State career field percentage list.
- Against Southern, Lee was 8-of-15 (.533) from the floor. This was her 23rd career game with five or more made field goals.
- In her career, Lee has a field goal percentage of .565 (192-

of-340). She needs 10 attempts to join the K-State career field goal list. She would rank third in program history for career field goal percentage.

- Lee has 19 career games with a field goal percentage of .500 or better.
- In the 2019-20 season, Lee shot .568 (184-of-324) from the field and ranked second in the Big 12 and 20th in the nation. Among freshmen in the nation, Lee ranked fifth for field goal percentage.
- Among centers in the nation, Lee ranked fourth for field goals made (184) and fifth for field goal percentage.
- In Big 12 games, Lee led the league in field goal percentage .578 (119-of-206).
- Lee's field goal percentage in the 2019-20 season ranked as the second-highest in a freshman season in program history (min. 150 field goal attempts).
- Lee was 10-of-10 from the field against UIW on December 3, 2019, and tied the school record set by Priscilla Gary on December 31, 1982, against Cal State Fullerton. Her perfect field goal percentage set the Bramlage Coliseum record for field goal percentage in a game by a K-State player.
- Lee was the ninth player in the history of the Big 12 to finish a game perfect from the field with 10 or more attempts.
- With her effort against UIW, Lee posted the top single-game field goal percentage with a minimum of 10 field goal attempts in the nation this season and was one of six players to finish a game perfect from the floor with at least 10 attempts in the 2019-20 season.

## SOPHOMORE (2020-21)

Opened the season with 17 points on 8-of-15 shooting, nine rebounds and four blocks.

## REDSHIRT FRESHMAN (2019-20)

Two-time USBWA National Freshman of the Week... Big 12 Freshman of the Year... All-Big 12 First Team... Unanimous Big 12 All-Freshman Team selection... *Waco Tribune* Freshman of the Year... *Waco Tribune* Big 12 All-Freshman Team... Played in and started all 29 games... Logged 924 minutes of action (31.9 mpg)... Led the Wildcats with 456 points (15.7 ppg), a .568 field goal percentage (184-of-324) and a .704 free throw percentage (88-of-125)... Ranked eighth in the Big 12 in scoring and second in the league in field goal percentage... Ranked 20th in the nation and fifth among freshmen in the nation for field goal percentage... Ranked as the second-highest field goal percentage in a freshman season in program history... Registered 27 games with 10 or more points... Led the Wildcats with 331 rebounds (11.4 rpg)... Fourth player in school history to average a double-double for an entire season... Her rebounds per game set a new school record for all classes and a freshman season... Ranked second in school history for rebounds in a season... Ranked second in the Big 12 and first among the league's freshmen in rebounding... Ranked tied for 10th in the nation in rebounding and second among all freshmen... Among centers in the nation, ranked second in rebounding... Led the Big 12, ranked ninth in the nation and led all freshmen in the nation with 4.3 offensive rebounds per game... Pulled in 10 or more rebounds in 21 games and had five or more rebounds in all 29 games... Blocked 91 shots (3.1 bpg)... Set the school single-season and freshmen records for blocks per game... Set the freshman record for total blocks in a season... Ranked second in school history for blocks in a season... Had eight games with five or more blocks... Pocketed 23 games with two or more blocks... First player in school history with the combination of 400 or more points, 300 or more rebounds and 90 or more blocks in a season... Set the school record and freshmen record for double-doubles in a season with 19... Set the school career record for double-double and five or more blocks in the same game with seven... In league-only games, she averaged 15.8 points, 11.7 rebounds and 3.1 blocks... Made her collegiate debut against Omaha (11/8) and finished with 11 points, eight rebounds, three blocks and two steals... Registered her first career double-double with 13 points, 12 rebounds and five blocks against UIC (11/11)... Notched her second double-double with a career-high

20 points on 8-of-11 shooting and 11 rebounds against Oral Roberts (11/18)... Lee was one of just four freshmen this season with two or more double-doubles in her first three career games... Talled 14 points on 7-of-10 shooting, seven rebounds and two blocks against Memphis (11/29)... Registered 22 points on 8-of-9 shooting, with 13 rebounds and a career-high six blocks against Michigan State (11/30)... Carded 20 points on 10-of-10 shooting, eight rebounds and six blocks against UIW (12/3)... Recorded 15 points and 14 rebounds at Arkansas (12/7)... Notched a career-high 24 points including a career-best 12-of-13 from the foul line, a career-high 14 rebounds and two blocks at Kansas City (12/14)... Carded a double-double at third-ranked Oregon (12/21) with 14 points, 10 rebounds, two assists and two blocks... Notched 12 points, 11 rebounds, three blocks, two assists and a steal against UTRGV (12/28)... Registered 12 points on 5-of-7 shooting, nine rebounds and two blocks against West Virginia (1/5)... Talled 20 points, nine rebounds and three steals at Texas Tech (1/11)... Pocketed 12 points, 10 rebounds and a steal against Oklahoma State (1/15)... Registered 12 points including 6-of-6 from the free throw line, nine rebounds, one block and one steal against Texas (1/19)... Carded 12 points, seven rebounds and two blocks at Iowa State (1/22)... Became the first player in program history with a 20-20 game, as she registered 23 points on 10-of-13 shooting, 20 rebounds, five blocks and two steals against Oklahoma (1/25)... Recorded 17 points on 8-of-15 shooting, 12 rebounds, five blocks and two steals at Kansas (1/29)... Notched 11 points, 12 rebounds, five blocks and two assists at TCU (2/1)... Tied her career-high with 24 points on 10-of-17 shooting, with five rebounds and four blocks against Texas Tech (2/5)... Carded 14 points, 12 rebounds and two blocks against Baylor (2/11)... Recorded 15 points, 16 rebounds, six blocks and two steals at West Virginia (2/11)... Talled 24 points, 13 rebounds, four blocks and three steals at Oklahoma (2/16)... Registered 22 points on 10-of-14 shooting, 17 rebounds and six blocks against TCU (2/19)... Notched fifth straight double-double with 18 points, 10 rebounds and three blocks at Texas (2/22)... Set the school record for single-season double-doubles with 13 points, 12 rebounds and four blocks at Oklahoma State (3/3)... Carded 17 points on 5-of-7 shooting and 7-of-7 from the line, 14 rebounds and two blocks against Kansas (3/8).

## LEE'S CAREER STATISTICS

YEAR	G-GS	MIN-AVG.	FGM-FGA	PCT	3PT-A	PCT	FTM-FTA	PCT	O-D-T	AVG	PF-D	A	TO	BLK	ST	PTS-AVG
2018-19																
2019-20	29-29	924-31.9	184-324	.568	0-0	.000	88-125	.704	126-205-331	11.4	88-1	13	47	91	24	456-15.7
2020-21	2-2	31-15.5	8-16	.500	0-0	.000	3-4	.750	6-7-13	6.5	1-0	1	0	4	0	19-9.5
<b>TOTAL</b>	<b>31-31</b>	<b>955-30.8</b>	<b>192-340</b>	<b>.565</b>	<b>0-0</b>	<b>.000</b>	<b>91-129</b>	<b>.705</b>	<b>132-212-344</b>	<b>11.1</b>	<b>89-1</b>	<b>14</b>	<b>47</b>	<b>95</b>	<b>24</b>	<b>475-15.3</b>

+ + + + +

## OVERALL STATISTICS

RECORD: 1-1 •• BIG 12: 0-0 •• NON-CONFERENCE: 1-1 •• HOME: 1-1 •• AWAY: 0-0 •• NEUTRAL: 0-0

#	Player	GP	GS	Min	Avg	FG	FGA	Pct	/-----3PT-----\			FT	FTA	Pct	/-----REB-----\				PF	FO	A	TO	Blk	Stl	Pts	Avg
									FG	FGA	Pct				O	D	T	Avg								
43	Christianna Carr	2	2	63	31.5	10	25	.400	7	16	.438	3	4	.750	2	7	9	4.5	2	0	2	4	2	1	30	15.0
12	Rachel Ranke	2	0	47	23.5	8	22	.364	2	13	.154	1	2	.500	1	4	5	2.5	3	0	5	3	0	1	19	9.5
50	Ayoka Lee	2	2	31	15.5	8	16	.500	0	0	.000	3	4	.750	6	7	13	6.5	1	0	1	0	4	0	19	9.5
13	Laura Macke	2	2	46	23.0	7	11	.636	1	3	.333	1	4	.250	3	4	7	3.5	3	0	3	6	0	0	16	8.0
23	Jada Moore	1	0	16	16.0	3	5	.600	0	0	.000	0	0	.000	1	2	3	3.0	2	0	2	2	0	1	6	6.0
24	Emilee Ebert	2	2	60	30.0	3	6	.500	1	3	.333	0	0	.000	0	8	8	4.0	5	0	8	4	5	1	7	3.5
04	Sydney Goodson	2	2	67	33.5	3	13	.231	1	8	.125	0	0	.000	0	7	7	3.5	3	0	6	8	1	3	7	3.5
41	Taylor Lauterbach	2	0	25	12.5	3	5	.600	0	1	.000	1	3	.333	2	6	8	4.0	4	0	0	1	0	0	7	3.5
33	Ashley Ray	2	0	14	7.0	1	2	.500	0	0	.000	0	0	.000	1	1	2	1.0	0	0	2	0	1	0	2	1.0
02	Cymone Goodrich	2	0	26	13.0	1	5	.200	0	0	.000	0	0	.000	0	2	2	1.0	3	0	2	2	0	0	2	1.0
03	Makayla Pippin	1	0	4	4.0	0	2	.000	0	2	.000	0	0	.000	1	1	2	2.0	0	0	1	0	0	0	0	0.0
10	Jada Thorpe	1	0	1	1.0	0	0	.000	0	0	.000	0	0	.000	0	0	0	0.0	0	0	0	0	0	0	0	0.0
TM	TEAM														5	6	11	5.5	0			2				0
	Total	2				47	112	.420	12	46	.261	9	17	.529	22	55	77	38.5	26	0	32	32	13	7	115	57.5
	Opponents	2				44	123	.358	5	30	.167	18	32	.563	28	46	74	37.0	20	0	13	18	2	22	111	55.5

SCORE BY PERIODS:	1st	2nd	3rd	4th	OT	Total
Kansas State	27	29	30	29	-	115
Opponents	28	25	31	27	-	111

DEADBALL REBOUNDS:	TOTAL
Kansas State	8
Opponents	7

## STATISTICS IN K-STATE NON-CONFERENCE GAMES

RECORD: 1-1 •• HOME: 1-1 •• AWAY: 0-0 •• NEUTRAL: 0-0

#	Player	GP	GS	Min	Avg	FG	FGA	Pct	/-----3PT-----\			FT	FTA	Pct	/-----REB-----\				PF	FO	A	TO	Blk	Stl	Pts	Avg
									FG	FGA	Pct				O	D	T	Avg								
43	Christianna Carr	2	2	63	31.5	10	25	.400	7	16	.438	3	4	.750	2	7	9	4.5	2	0	2	4	2	1	30	15.0
12	Rachel Ranke	2	0	47	23.5	8	22	.364	2	13	.154	1	2	.500	1	4	5	2.5	3	0	5	3	0	1	19	9.5
50	Ayoka Lee	2	2	31	15.5	8	16	.500	0	0	.000	3	4	.750	6	7	13	6.5	1	0	1	0	4	0	19	9.5
13	Laura Macke	2	2	46	23.0	7	11	.636	1	3	.333	1	4	.250	3	4	7	3.5	3	0	3	6	0	0	16	8.0
23	Jada Moore	1	0	16	16.0	3	5	.600	0	0	.000	0	0	.000	1	2	3	3.0	2	0	2	2	0	1	6	6.0
24	Emilee Ebert	2	2	60	30.0	3	6	.500	1	3	.333	0	0	.000	0	8	8	4.0	5	0	8	4	5	1	7	3.5
04	Sydney Goodson	2	2	67	33.5	3	13	.231	1	8	.125	0	0	.000	0	7	7	3.5	3	0	6	8	1	3	7	3.5
41	Taylor Lauterbach	2	0	25	12.5	3	5	.600	0	1	.000	1	3	.333	2	6	8	4.0	4	0	0	1	0	0	7	3.5
33	Ashley Ray	2	0	14	7.0	1	2	.500	0	0	.000	0	0	.000	1	1	2	1.0	0	0	2	0	1	0	2	1.0
02	Cymone Goodrich	2	0	26	13.0	1	5	.200	0	0	.000	0	0	.000	0	2	2	1.0	3	0	2	2	0	0	2	1.0
03	Makayla Pippin	1	0	4	4.0	0	2	.000	0	2	.000	0	0	.000	1	1	2	2.0	0	0	1	0	0	0	0	0.0
10	Jada Thorpe	1	0	1	1.0	0	0	.000	0	0	.000	0	0	.000	0	0	0	0.0	0	0	0	0	0	0	0	0.0
TM	TEAM														5	6	11	5.5	0			2				0
	Total	2				47	112	.420	12	46	.261	9	17	.529	22	55	77	38.5	26	0	32	32	13	7	115	57.5
	Opponents	2				44	123	.358	5	30	.167	18	32	.563	28	46	74	37.0	20	0	13	18	2	22	111	55.5

SCORE BY PERIODS:	1st	2nd	3rd	4th	OT	Total
Kansas State	27	29	30	29	-	115
Opponents	28	25	31	27	-	111

DEADBALL REBOUNDS:	TOTAL
Kansas State	8
Opponents	7

## STATISTICS IN K-STATE BIG 12 CONFERENCE GAMES

RECORD: 0-0 •• HOME: 0-0 •• AWAY: 0-0

#	Player	GP	GS	Min	Avg	FG	FGA	Pct	/-----3PT-----\			FT	FTA	Pct	/-----REB-----\				PF	FO	A	TO	Blk	Stl	Pts	Avg
									FG	FGA	Pct				O	D	T	Avg								

SCORE BY PERIODS:	1st	2nd	3rd	4th	OT	Total
Kansas State						
Opponents						

DEADBALL REBOUNDS:	TOTAL
Kansas State	
Opponents	

## STATISTICS IN K-STATE HOME GAMES

RECORD: 1-1 •• BIG 12: 0-0 •• NON-CONFERENCE: 1-1

#	Player	GP	GS	Min	Avg	FG	FGA	Pct	/-----3PT-----\			FT	FTA	Pct	/-----REB-----\				PF	FO	A	TO	Blk	Stl	Pts	Avg
									FG	FGA	Pct				0	D	T	Avg								
43	Christianna Carr	2	2	63	31.5	10	25	.400	7	16	.438	3	4	.750	2	7	9	4.5	2	0	2	4	2	1	30	15.0
12	Rachel Ranke	2	0	47	23.5	8	22	.364	2	13	.154	1	2	.500	1	4	5	2.5	3	0	5	3	0	1	19	9.5
50	Ayoka Lee	2	2	31	15.5	8	16	.500	0	0	.000	3	4	.750	6	7	13	6.5	1	0	1	0	4	0	19	9.5
13	Laura Macke	2	2	46	23.0	7	11	.636	1	3	.333	1	4	.250	3	4	7	3.5	3	0	3	6	0	0	16	8.0
23	Jada Moore	1	0	16	16.0	3	5	.600	0	0	.000	0	0	.000	1	2	3	3.0	2	0	2	2	0	1	6	6.0
24	Emilee Ebert	2	2	60	30.0	3	6	.500	1	3	.333	0	0	.000	0	8	8	4.0	5	0	8	4	5	1	7	3.5
04	Sydney Goodson	2	2	67	33.5	3	13	.231	1	8	.125	0	0	.000	0	7	7	3.5	3	0	6	8	1	3	7	3.5
41	Taylor Lauterbach	2	0	25	12.5	3	5	.600	0	1	.000	1	3	.333	2	6	8	4.0	4	0	0	1	0	0	7	3.5
33	Ashley Ray	2	0	14	7.0	1	2	.500	0	0	.000	0	0	.000	1	1	2	1.0	0	0	2	0	1	0	2	1.0
02	Cymone Goodrich	2	0	26	13.0	1	5	.200	0	0	.000	0	0	.000	0	2	2	1.0	3	0	2	2	0	0	2	1.0
03	Makayla Pippin	1	0	4	4.0	0	2	.000	0	2	.000	0	0	.000	1	1	2	2.0	0	0	1	0	0	0	0	0.0
10	Jada Thorpe	1	0	1	1.0	0	0	.000	0	0	.000	0	0	.000	0	0	0	0.0	0	0	0	0	0	0	0	0.0
TM	TEAM														5	6	11	5.5	0			2			0	
<b>Total</b>		<b>2</b>				<b>47</b>	<b>112</b>	<b>.420</b>	<b>12</b>	<b>46</b>	<b>.261</b>	<b>9</b>	<b>17</b>	<b>.529</b>	<b>22</b>	<b>55</b>	<b>77</b>	<b>38.5</b>	<b>26</b>	<b>0</b>	<b>32</b>	<b>32</b>	<b>13</b>	<b>7</b>	<b>115</b>	<b>57.5</b>
Opponents		2				44	123	.358	5	30	.167	18	32	.563	28	46	74	37.0	20	0	13	18	2	22	111	55.5

## SCORE BY PERIODS:

	1st	2nd	3rd	4th	OT	Total
Kansas State	27	29	30	29	-	115
Opponents	28	25	31	27	-	111

## DEADBALL REBOUNDS: TOTAL

Kansas State	8
Opponents	7

## STATISTICS IN K-STATE ROAD GAMES

RECORD: 0-0 •• BIG 12: 0-0 •• NON-CONFERENCE: 0-0

#	Player	GP	GS	Min	Avg	FG	FGA	Pct	/-----3PT-----\			FT	FTA	Pct	/-----REB-----\				PF	FO	A	TO	Blk	Stl	Pts	Avg
									FG	FGA	Pct				0	D	T	Avg								

## SCORE BY PERIODS:

	1st	2nd	3rd	4th	OT	Total
Kansas State						
Opponents						

## DEADBALL REBOUNDS: TOTAL

Kansas State	
Opponents	

## STATISTICS IN K-STATE NEUTRAL SITE GAMES

RECORD: 0-0 •• NON-CONFERENCE: 0-0

#	Player	GP	GS	Min	Avg	FG	FGA	Pct	/-----3PT-----\			FT	FTA	Pct	/-----REB-----\				PF	FO	A	TO	Blk	Stl	Pts	Avg
									FG	FGA	Pct				0	D	T	Avg								

## SCORE BY PERIODS:

	1st	2nd	3rd	4th	OT	Total
Kansas State						
Opponents						

## DEADBALL REBOUNDS: TOTAL

Kansas State	
Opponents	

## 2020-21 KANSAS STATE ATTENDANCE SUMMARY

HOME ALL	BIG 12 (AVG.)	HIGH	AVG. (GAMES)	ROAD ALL	BIG 12 (AVG.)	HIGH	AVG. (GAMES)
502	-	502 (12/3)	251 (2)	-	-	-	-

+ + + + + + +

## TEAM GAME-BY-GAME STATISTICS

DATE	OPPONENT	FG-FGA	PCT.	3P-3PA	PCT.	FT-FTA	PCT.	OR-DR-RB	A	TO	B	S	PF	1Q	2Q	1H	3Q	4Q	2H	OT	PTS
11/29/20	Southern	21-60	.350	0-7	.000	9-20	.450	12-22-34	3	9	0	9	9	14	14	28	13	10	23	-	51
	at K-State	29-63	.460	4-24	.167	4-8	.500	14-30-44	21	14	10	4	14	11	18	29	16	21	37	-	66
12/3/20	(11/12) Kentucky	23-63	.365	5-23	.217	9-12	.750	16-24-40	10	10	2	13	11	14	11	25	18	17	35	-	60
	at K-State	18-49	.367	8-22	.364	5-9	.556	8-25-33	11	18	3	4	12	16	11	27	14	8	22	-	49



## 2020-21 TEAM GAME-BY-GAME HIGHS

OPPONENT	DATE	SCORE	POINTS	REBOUNDS	ASSISTS	STEALS	BLOCKS
Southern	11/29	W, 66-51	17, Lee	9, Lee	6, Ebert	1, four tied	4, Lee & Ebert
<b>21-point fourth quarter sends K-State to win; Lee scores 15 in 2nd half</b>							
(11/12) Kentucky	12/3	L, 60-49	15, Carr	5, Carr & Lauterbach	3, Ranke	2, Goodson	1, Carr, Ebert & Ray
<b>Wildcats run out of gas in 4th quarter, outscored 17-8 in final period</b>							

## KANSAS STATE STARTING LINEUPS

Guard	Guard	Guard/Forward	Guard/Forward	Forward/Center	20-21	All-Time	Games
Goodson	Ebert	Carr (G)	Macke (F)	Lee (C)	1-1	1-1	1, 2

## GAME-BY-GAME STATISTICS

## 2020-21 POINTS-REBOUNDS-ASSISTS

OPPONENT	1 SIMMONS	2 GOODRICH	3 PIPPIN	4 GOODSON	10 THORPE	12 RANKE	13 MACKIE	23 MOORE	24 EBERT	33 RAY	41 LAUTERBACH	43 CARR	50 LEE
Southern	DNP-INJ	0-0-0	0-2-1	5-5-4	0-0-0	7-1-2	8-4-2	6-3-2	4-4-6	0-0-1	4-3-0	15-4-2	17-9-1
Kentucky	DNP-INJ	2-2-2	DNP-CD	2-2-2	DNP-CD	12-4-3	8-3-1	DNP-INJ	3-3-2	2-2-1	3-5-0	15-5-0	2-4-0
at Central Arkansas													
Idaho State													
South Dakota State													
Omaha													
Kansas City													
at Iowa State													
Texas													
at Oklahoma													
West Virginia													
at Baylor													
TCU													
Oklahoma State													
at West Virginia													
at Kansas													
Iowa State													
Oklahoma													
at Texas Tech													
Baylor													
at TCU													
Kansas													
at Oklahoma State													
at Texas													
Texas Tech													

DNP-CD: Did Not Play-Coach's Decision; DNP-RS: Did Not Play - Red-shirting; DNP-S: Did Not Play-Sick; DNP-INJ: Did Not Play-Injured; DNP-SUS: Did Not Play-Suspended; DNP-FE: Did Not Play-Family Emergency

## SCORING BREAKDOWN (K-State/Opponent)

	Pts in Paint	Pts off TOs	2nd ch. Pts	Fast Break Pts	Starter	Bench
Southern	50/24	6/12	7/11	16/4	49/36	17/15
Kentucky	20/24	7/18	12/12	5/9	30/47	19/13
at Central Arkansas						
Idaho State						
South Dakota State						
Omaha						
Kansas City						
at Iowa State						
Texas						
at Oklahoma						
West Virginia						
at Baylor						
TCU						
Oklahoma State						
at West Virginia						
at Kansas						
Iowa State						
Oklahoma						
at Texas Tech						
Baylor						
at TCU						
Kansas						
at Oklahoma State						
at Texas						
Texas Tech						
<b>Totals</b>	<b>70/48</b>	<b>13/30</b>	<b>19/23</b>	<b>21/13</b>	<b>79/83</b>	<b>36/28</b>
<b>Per Game</b>	<b>35.0/24.0</b>	<b>6.5/15.0</b>	<b>9.5/11.5</b>	<b>10.5/6.5</b>	<b>39.5/41.5</b>	<b>18.0/14.0</b>

CLASS SCORING  
BREAKDOWN

	Fr.	So.	Jr.	Sr.
Southern	10	21	30	5
Kentucky	3	5	39	2
at Central Arkansas				
Idaho State				
South Dakota State				
Omaha				
Kansas City				
at Iowa State				
Texas				
at Oklahoma				
West Virginia				
at Baylor				
TCU				
Oklahoma State				
at West Virginia				
at Kansas				
Iowa State				
Oklahoma				
at Texas Tech				
Baylor				
at TCU				
Kansas				
at Oklahoma State				
at Texas				
Texas Tech				
<b>Totals</b>	<b>13</b>	<b>26</b>	<b>69</b>	<b>7</b>
<b>Per Game</b>	<b>6.5</b>	<b>13.0</b>	<b>34.5</b>	<b>3.5</b>

**Kansas State's Record When 2020-21**

Vs. AP Top 25	0-1
Vs. AP Top 10	0-1

In overtime	-
Scoring first	-
Ahead at the half	1-1
Behind at the half	-
Tied at the half	-

Leading entering 4th quarter	1-0
Trailing entering 4th quarter	0-1
Tied entering 4th quarter	-
Leading with 5:00 remaining	1-0
Trailing with 5:00 remaining	-
Tied with 5:00 remaining	0-1

In games decided by 3 points or less	-
In games decided by 4-10 points	-
In games decided by 11-15 points	1-1
In games decided by 16-20 points	-
In games decided by 21 or more points	-

K-State scores 100 or more points	-
K-State scores 90-99 points	-
K-State scores 80-89 points	-
K-State scores 70-79 points	-
K-State scores 60-69 points	1-0
K-State scores 50-59 points	-
K-State scores less than 50 points	0-1

Opponent scores 100 or more points	-
Opponent scores 90-99 points	-
Opponent scores 80-89 points	-
Opponent scores 70-79 points	-
Opponent scores 60-69 points	0-1
Opponent scores 50-59 points	1-0
Opponent scores less than 50 points	-

K-State shoots 50% or better	-
K-State shoots less than 50%	1-1
K-State shoots better than opponent	1-0
K-State shoots same as opponent	-

Opponent shoots 50% or better	-
Opponent shoots less than 50%	1-1
Opponent shoots better than K-State	0-1

K-State shoots 40% or better from 3-point arc	-
K-State shoots 70% or better from FT line	-
K-State has more FT attempts	-
Opponent has more FT attempts	1-1
K-State equals opponent in FT attempts	-

K-State out-rebounds opponent	1-0
Opponent out-rebounds K-State	0-1
K-State equals opponent in rebounds	-

K-State has more turnovers than opponent	1-1
K-State has less turnovers than opponent	-
K-State equals opponent in turnovers	-

On Mondays	-
On Tuesdays	-
On Wednesdays	-
On Thursdays	1-0
On Fridays	-
On Saturdays	-
On Sundays	1-0

In November	1-0
In December	1-0
In January	-
In February	-
In March	-

On Big 12 Now on ESPN+	1-1
------------------------	-----

<b>K-State vs. Conferences</b>	<b>20-21</b>	<b>All-Time</b>
vs. Big 12	-	202-200
vs. Big Sky	-	15-1
vs. SEC	0-1	71-66
vs. Summit League	-	32-2
vs. Sun Belt	-	15-7
vs. SWAC	1-0	23-0

**LAST TIME...****SCORING (PLAYER)**

<b>K-State player scored 40+ points</b>
42* by Brittany Chambers vs. Texas Southern (3/21/13)
<b>K-State player scored 30+ points</b>
31 by Peyton Williams at Oklahoma (2/16/20)
<b>K-State player with consecutive games of 30+ points</b>
2* by Brittany Chambers at West Virginia (36; 2/26/13), vs. Texas Tech (31; 3/2/13)
<b>K-State player with consecutive games of 20+ points</b>
2 by Ayoka Lee - (2/16/20 to 2/22/20)
<b>2 K-State players with 20+ points same game</b>
Peyton Williams (31) & Ayoka Lee (24), at Oklahoma (2/16/20)
<b>K-State player made 15+ FGs</b>
15 by Brittany Chambers vs. Texas Southern (3/21/13)
<b>K-State player made 10+ FGs</b>
10 by Peyton Williams, vs. Kansas (3/8/20)
<b>K-State player attempted 25+ FGs</b>
25 by Brittany Chambers vs. Texas Southern (3/21/13)
<b>K-State player attempted 20+ FGs</b>
20 by Christianna Carr, vs. Michigan (3/22/19)
<b>K-State player made 10+ 3-point FGs</b>
10 by Laurie Koehn vs. Iowa (1/5/03)
<b>K-State player made 6+ 3-point FGs</b>
8 by Rachel Ranke at Oklahoma (2/10/19)
<b>K-State player attempted 15+ 3-point FGs</b>
15 by Rachel Ranke vs. Chicago State (12/18/17)
<b>K-State player attempted 10+ 3-point FGs</b>
13 by Christianna Carr, at TCU (2/1/20)
<b>K-State player made 15+ FTs</b>
15 by Nicole Ohlde vs. Valparaiso (3/21/04)
<b>K-State player made 10+ FTs</b>
12, Peyton Williams, at Oklahoma (2/16/20)
<b>K-State player attempted 20+ FTs</b>
21 by Nicole Ohlde vs. Valparaiso (3/21/04)
<b>K-State player attempted 10+ FTs</b>
15 by Peyton Williams, at Oklahoma (2/16/20)

<b>Opponent scored 40+ points</b>
40, by Odyssey Sims, Baylor (1/2/14)
<b>Opponent scored 30+ points</b>
32, by Chelsea Dungee, Arkansas (12/7/19)
<b>Opponent made 15+ FGs</b>
15, by Morgan Bertsch, UC Davis (3/23/18)
<b>Opponent attempted 30+ FGs</b>
33, by Ana Llanusa, Oklahoma (2/10/19)
<b>Opponent made 7+ 3-point FGs</b>
7, by Kennedy Kirkpatrick, UNI (12/21/17)
<b>Opponent attempted 15+ 3-point FGs</b>
17, by Emily Durr, Iowa State (2/11/17)
<b>Opponent made 10+ FTs</b>
12, by Keni Jo Lippe, Oral Roberts (11/18/19)
<b>Opponent attempted 15+ FTs</b>
17, by Keni Jo Lippe, Oral Roberts (11/18/19)

**REBOUNDING (PLAYER)**

<b>K-State player had 20+ rebounds</b>
22* by Peyton Williams at TCU (2/1/20)
<b>K-State player had 15+ rebounds</b>
17 by Ayoka Lee vs. TCU (2/19/20)
<b>K-State player had 10+ rebounds</b>
14 by Ayoka Lee vs. Kansas (3/8/20)
<b>Opponent had 20+ rebounds</b>
20, by Teviani Scott, Sacramento State (3/3/94)
<b>Opponent had 15+ rebounds</b>
17, Brittany Brewer, Texas Tech (1/11/20)

^ - tied school record; \* - school record  
 ~ - Bramlage Coliseum record

**SCORING (TEAM)**

<b>K-State scored 100+ points</b>
109-69, vs. Oral Roberts (11/18/19)
<b>K-State scored 90+ points</b>
92-74, vs. Oklahoma (1/25/20)
<b>K-State scored fewer than 50 points</b>
60-49 (L), vs. (11/12) Kentucky (12/3/20)
<b>K-State scored fewer than 40 points</b>
60-30 (L), at West Virginia (1/26/19)
<b>K-State scored fewer than 40 points &amp; won</b>
37-33 (W) vs. Missouri (2/10/10)
<b>K-State shot over 60% from the field</b>
.649 vs. UIW (12/3/19)
<b>K-State shot under 35% from the field</b>
.213, vs. (2/1) Baylor (2/8/20)
<b>K-State won by 20+ points</b>
83-63, vs. Kansas (3/8/20)
<b>K-State won by 30+ points</b>
85-41, vs. UIW (12/3/19)
<b>K-State won by 40+ points</b>
85-41, vs. UIW (12/3/19)
<b>K-State made 40+ FGs</b>
41 vs. Illinois State (11/26/04)
<b>K-State attempted 80+ FGs</b>
83 at Oklahoma (2/16/20)
<b>K-State made 15+ 3-point FGs</b>
15, at (1/1) Baylor (3/4/13)
<b>K-State made 12+ 3-point FGs</b>
14, at Oklahoma (2/10/19)
<b>K-State attempted 30+ 3-point FGs</b>
30, at TCU (2/1/20)
<b>K-State made 20+ FTs</b>
20, vs. Kansas (3/8/20)
<b>K-State made 30+ FTs</b>
32, vs. Colorado (12/6/79)
<b>K-State attempted 35+ FTs</b>
37, vs. TCU (2/11/15)
<b>K-State attempted 40+ FTs</b>
41, vs. Colorado (1/13/90)
<b>K-State attempted 45+ FTs</b>
48, vs. Iowa State (1/25/89)

<b>Opponent scored 100+ points</b>
105-70, (16) Ohio State (12/19/94)
<b>Opponent scored 90+ points</b>
96-58, (25/rv) Iowa State (1/2/19)
<b>Opponent scored fewer than 50 points</b>
85-41, UIW (12/3/19)
<b>Opponent scored fewer than 40 points</b>
84-40, UIC (11/11/19)
<b>Opponent scored fewer than 15 points in a half</b>
15 (1st half), Chicago State (11/11/16)
<b>Opponent shot under 35% from the field</b>
.321, Iowa State (2/26/20)
<b>Opponent won by 20+ points</b>
83-58, Baylor (2/29/20)
<b>Opponent won by 30+ points</b>
89-51, Oregon (12/21/19)
<b>Opponent made 10+ 3-point FGs</b>
11, Texas (1/19/20)
<b>Opponent made 20+ FTs</b>
20, Arkansas (12/7/19)
<b>Opponent made 30+ FTs</b>
35, UTEP (11/16/13)

**REBOUNDING (TEAM)**

<b>K-State had 60+ rebounds</b>
64, at TCU (2/1/20)
<b>K-State had 50+ rebounds</b>
54, at Oklahoma (2/16/20)
<b>K-State had 20+ offensive rebounds</b>
20, at Oklahoma (2/16/20)
<b>K-State had 30+ defensive rebounds</b>
30, vs. Southern (11/29/20)
<b>K-State had 40+ defensive rebounds</b>
43, vs. UIC (11/11/19)
<b>Opponent had 50+ rebounds</b>
52, Oklahoma (2/16/20)

**OTHER STATISTICS (TEAM)**

<b>K-State had 20+ assists</b>
21, vs. Southern (11/29/20)
<b>K-State had 30+ assists</b>
30, vs. UIW (12/3/19)
<b>K-State had 35+ assists</b>
37, vs. Arkansas-Pine Bluff (12/2/02)
<b>K-State had 20+ steals</b>
24, vs. Abilene Christian (12/22/14)
<b>K-State had 25+ steals</b>
25--, vs. Baylor (1/12/00)
<b>K-State had 10+ blocks</b>
10, vs. Southern (11/29/20)
<b>K-State had 20+ turnovers</b>
28, at TCU (2/1/20)
<b>K-State had 30+ turnovers</b>
34, at UTEP (11/16/13)

**Opponent had 20+ assists**

26, Baylor (2/29/20)
<b>Opponent had 20+ steals</b>
21--, Texas (1/19/20)
<b>Opponent had 15+ steals</b>
21, Texas (1/19/20)
<b>Opponent had 10+ blocks</b>
11, vs. George Washington (3/18/16)

**OTHER STATISTICS (PLAYER)**

<b>K-State player had 10+ assists</b>
13 ~ by Kayla Goth vs. West Virginia (3/9/19)
<b>K-State player had 6+ assists</b>
6, by Emilee Ebert vs. Southern (11/29/20)
<b>K-State player had 10+ steals</b>
10 by Jenny Coalson vs. Missouri (2/15/98)
<b>K-State player had 6+ steals</b>
6 by Angela Harris vs. Iowa State (2/26/20)
<b>K-State player had 5+ blocks</b>
6 by Ayoka Lee vs. TCU (2/19/20)
<b>3+ K-State players registered a double-double</b>
Kayla Goth (20 pts, 10 assts)
Peyton Williams (18 pts, 12 rebs)
Kali Jones (10 pts, 10 rebs), vs. Lamar (12/5/18)
<b>K-State player registered a triple-double</b>
16 pts, 11 rebs, 12 assts
by Shalee Lehning, at Colorado (3/7/09)

**OVERTIME**

<b>Won in overtime</b>
87-85 (ot), at Oklahoma (2/16/20)
<b>Lost in overtime</b>
85-80 (ot), at (20/24) Oklahoma (1/4/17)
<b>Won in double overtime</b>
93-90 at Missouri (2/22/04)
<b>Lost in double overtime</b>
86-75, at Hampton (12/21/13)
<b>Played 3 overtimes</b>
79-89, at Wyoming (WNIT Semifinals, 3/28/07)

**MISCELLANEOUS (TEAM)**

<b>K-State had a 5+ game winning streak</b>
6, Feb. 17, 2019 to 3/10/19
<b>K-State had a 10+ game winning streak</b>
14, Nov. 14, 2008 to Jan. 14, 2009
<b>K-State had a 15+ game winning streak</b>
17, Jan. 14, 1982 to March 20, 1982

**NATIONAL RANKINGS**

<b>K-State defeated an AP ranked opponent</b>
69-60, at (15) Texas (2/17/19)
<b>K-State defeated a top-5 ranked opponent</b>
71-67 (ot), vs. (5) Texas A&M (3/2/11)
<b>K-State was ranked among the AP top-25</b>
No. 24 on March 13, 2017
<b>K-State was ranked among the Coaches top-25</b>
No. 22 on Jan. 16, 2012

## 2020-21 MISCELLANEOUS STATS

	K-State	Opponents
3-second violations	-	-
5-second violations	-	-
10-second violations	-	-
Lane violations	-	-
Shot clock violations	2	2
4-point plays	-	-
Technical fouls (player)	-	-
Technical fouls (bench)	-	-
Flagrant foul	-	-
Points in the Paint	70	48
Points off Turnovers	13	30
Second Chance Points	19	23
Fast Break Points	21	13
Bench Points	36	28

## FTS IN LAST

5 MINUTES & OT	17-18	18-19	19-20	20-21	CAREER
Christianna Carr	--	16-28	13-17	--	29-45
Rachel Ranke	11-16	7-9	2-3	--	20-28
Ayoka Lee	--	--	17-24	--	17-24
Ashley Ray	3-8	0-2	0-2	--	3-12
Laura Macke	--	2-6	3-3	0-2	5-9
Savannah Simmons	--	1-2	4-6	--	5-8
Cymone Goodrich	1-2	0-0	2-4	--	3-6
Emma Chapman	--	--	1-2	--	1-2
Emilee Ebert	--	--	0-0	--	--

CHARGES DRAWN	17-18	18-19	19-20	20-21	CAREER
Rachel Ranke	0	1	1	--	2
Ashley Ray	0	1	0	--	1
Christianna Carr	--	1	0	--	1
Ayoka Lee	--	--	1	--	1
Savannah Simmons	--	0	1	--	1
Emilee Ebert	--	--	1	--	1

## DOUBLE-FIGURE

SCORING	17-18	18-19	19-20	20-21	CAREER
Rachel Ranke	21	18	5	1	45
Ayoka Lee	--	--	27	1	28
Christianna Carr	--	13	13	2	28
Cymone Goodrich	3	0	1	--	4
Laura Macke	--	--	1	--	1
Savannah Simmons	--	--	1	--	1

## DOUBLE-FIGURE

REBOUNDING	17-18	18-19	19-20	20-21	CAREER
Ayoka Lee	--	--	21	--	21
Rachel Ranke	0	1	0	--	1

## DOUBLE-FIGURE

ASSISTS	17-18	18-19	19-20	20-21	CAREER
-	--	--	--	--	--

DOUBLE-DOUBLES	17-18	18-19	19-20	20-21	CAREER
Ayoka Lee	--	--	19	--	19
Rachel Ranke	1	0	0	--	1

## CONSECUTIVE

GAME SCORING	17-18	18-19	19-20	20-21	CAREER
Christianna Carr	--	33*	29*	2*	64*
Rachel Ranke	18	21	7	2*	21
Laura Macke	--	5	5	2*	5
Ayoka Lee	--	--	29*	2*	31*
Savannah Simmons	--	1	8	--	8
Emilee Ebert	--	--	5*	2*	7*
Ashley Ray	4	4	1	1*	4
Cymone Goodrich	4	1	4	1*	4
Emma Chapman	--	--	3	--	3
Sydney Goodson	--	--	--	2*	2*
Taylor Lauterbach	--	--	--	2*	2*
Jada Moore	--	--	--	1*	1*

\* - current

GAMES STARTED	17-18	18-19	19-20	20-21	CAREER
Rachel Ranke	27	33	8	--	68
Christianna Carr	--	31	29	2	62
Sydney Goodson	--	26 ^	21 ^	2	49
Ayoka Lee	--	--	29	2	31
Ashley Ray	3	4	0	--	7
Cymone Goodrich	3	0	1	--	4
Savannah Simmons	--	0	2	--	2
Laura Macke	--	0	1	2	3
Emilee Ebert	--	--	0	2	2

## GAMES LEADING K-STATE IN...

SCORING	17-18	18-19	19-20	20-21	CAREER
Ayoka Lee	--	--	9	1	10
Christianna Carr	--	3	5	1	9
Rachel Ranke	--	5	3	--	8

REBOUNDING	17-18	18-19	19-20	20-21	CAREER
Ayoka Lee	--	--	15	1	16
Rachel Ranke	4	1	0	--	5
Christianna Carr	--	0	2	1	3
Taylor Lauterbach	--	--	--	1	1

ASSISTS	17-18	18-19	19-20	20-21	CAREER
Rachel Ranke	--	1	3	1	5
Savannah Simmons	--	0	2	--	2
Christianna Carr	--	1	1	--	2
Emilee Ebert	--	--	--	1	1

## LEADS AND DEFICITS

Largest Halftime Lead	2, vs. Kentucky (12/3/20)
Largest Halftime Lead Blown	2, vs. Kentucky (12/3/20)
Largest Halftime Deficit	--
Largest Halftime Deficit Overcome for Win	--
Largest Lead	15, vs. Southern (11/29/20)
Largest Lead Blown	5, vs. Kentucky (12/3/20)
Largest Deficit	5, vs. Southern (11/29/20)
Largest Deficit Overcome for Win	5, vs. Southern (11/29/20)

^ - Texas Tech

## HOW MANY TIMES A K-STATE PLAYER...

## Scored 30 or more Points

Top efforts of each player in this category:

## Scored 20 or more Points

Top efforts of each player in this category:

## Scored 15 or more Points

Christianna Carr (2), Ayoka Lee (1)

Top efforts of each player in this category:

Ayoka Lee, vs. Southern (11/29/20)	17
Christianna Carr, vs. Southern (11/29/20)	15
Christianna Carr, vs. Kentucky (12/3/20)	15

## Grabbed 15 or more Rebounds

Top efforts of each player in this category:

## Grabbed 10 or more Rebounds

Top efforts of each player in this category:

## Dished out 10 or more Assists

Top efforts of each player in this category:

## Recorded 5 or more Steals

Top efforts of each player in this category:

## Blocked 3 or more Shots

Ayoka Lee (1), Emilee Ebert (1)

Top efforts of each player in this category:

Ayoka Lee, vs. Southern (11/29/20)	4
Emilee Ebert, vs. Southern (11/29/20)	4

## HOW K-STATE SCORED FIRST POINTS

	Times	Record
Jump Shot	--	0-0
3-Pointer	--	0-0
Layup	--	0-0
Free Throw	2	1-1

## K-STATE MARGIN OF VICTORY/DEFEAT

Points	1	2	3	4	5	6	7	8	9	10	11	12	13	14	15	16	17	18	19	20+
K-State Victory															1					
K-State Defeat											1									



## QUARTER HIGHS | 2020-21 INDIVIDUAL &amp; TEAM HIGHS

<b>Most First Quarter Points</b> K-State 16, vs. Kentucky (12/3/20) Opp. 14, twice	<b>Most Second Quarter Points</b> K-State 18, vs. SU (11/29/20) Opp. 14, Southern (11/29/20)	<b>Most First Half Points</b> K-State 29, vs. SU (11/29/20) Opp. 28, Southern (11/29/20)	<b>Most Third Quarter Points</b> K-State 16, vs. SU (11/29/20) Opp. 18, Kentucky (12/3/20)	<b>Most Fourth Quarter Points</b> K-State 21, vs. SU (11/29/20) Opp. 17, Kentucky (12/3/20)	<b>Most Second Half Points</b> K-State 37, vs. SU (11/29/20) Opp. 35, Kentucky (12/3/20)
<b>Fewest First Quarter Points</b> K-State 11, vs. SU (11/29/20) Opp. -	<b>Fewest Second Quarter Points</b> K-State 11, vs. Kentucky (12/3/20) Opp. 11, Kentucky (12/3/20)	<b>Fewest First Half Points</b> K-State 27, vs. Kentucky (12/3/20) Opp. 25, Kentucky (12/3/20)	<b>Fewest Third Quarter Points</b> K-State 14, vs. Kentucky (12/3/20) Opp. 13, Southern (11/29/20)	<b>Fewest Fourth Quarter Points</b> K-State 8, vs. Kentucky (12/3/20) Opp. 10, Southern (11/29/20)	<b>Fewest Second Half Points</b> K-State 22, vs. Kentucky (12/3/20) Opp. 23, Southern (11/29/20)

## 2020-21 INDIVIDUAL SEASON-HIGHS

KANSAS STATE	CATEGORY	OPPONENT
17, Ayoka Lee, vs. Southern (11/29/20)	Points	21, Genovea Johnson, Southern (11/29/20)
8, Ayoka Lee, vs. Southern (11/29/20)	Field Goals Made	10, Genovea Johnson, Southern (11/29/20)
15, Ayoka Lee, vs. Southern (11/29/20)	Field Goals Attempted	22, Genovea Johnson, Southern (11/29/20)
.533 (8-15), Ayoka Lee, vs. Southern (11/29/20)	FG Pct. (min. 5 made)	.467, Dre'Una Edwards, Kentucky (12/3/20)
4, Christianna Carr, vs. Kentucky (12/3/20)	3-Pt. FG Made	2, Robyn Benton, Kentucky (12/3/20)
9, Christianna Carr, vs. Kentucky (12/3/20)	3-Pt. FG Att.	7, Rhyne Howard, Kentucky (12/3/20)
.444, Christianna Carr, vs. Kentucky (12/3/20)	3-Pt. FG Pct. (min. 5 attempts)	.333, Robyn Benton, Kentucky (12/3/20)
2, Christianna Carr, twice	Free Throws Made	4, Tyneisha Metcalf, Southern (11/29/20)
		4, Blair Green, Kentucky (12/3/20)
2, Christianna Carr, twice	Free Throws Attempted	6, Tyneisha Metcalf, Southern (11/29/20)
--	Free Throw Pct. (min. 5 attempts)	.667, Tyneisha Metcalf, Southern (11/29/20)
5, Ayoka Lee, vs. Southern (11/29/20)	Offensive Rebounds	7, Dre'Una Edwards, Kentucky (12/3/20)
5, Sydney Goodson, vs. Southern (11/29/20)	Defensive Rebounds	5, Dre'Una Edwards & Rhyne Howard, Kentucky (12/3/20)
9, Ayoka Lee, vs. Southern (11/29/20)	Rebounds	12, Dre'Una Edwards, Kentucky (12/3/20)
6, Emilee Ebert, vs. Southern (11/29/20)	Assists	3, Blair Green, Kentucky (12/3/20)
4, Sydney Goodson, twice	Turnovers	4, Rhyne Howard, Kentucky (12/3/20)
4, Laura Macke, vs. Kentucky (12/3/20)		
4, Ayoka Lee & Emilee Ebert, vs. Southern (11/29/20)	Blocked Shots	1, KeKe McKinney & Dre'Una Edwards, Kentucky (12/3/20)
3, Sydney Goodson, vs. Kentucky (12/3/20)	Steals	4, Dre'Una Edwards, Kentucky (12/3/20)
35:13, Emilee Ebert, vs. Kentucky (12/3/20)	Minutes Played	37:30, Rhyne Howard, Kentucky (12/3/20)

## 2020-21 TEAM SUPERLATIVES

K-STATE HIGH	K-STATE LOW	CATEGORY	OPPONENT HIGH	OPPONENT LOW
66, vs. Southern (11/29/20)	49, vs. Kentucky (12/3/20)	Points	60, Kentucky (12/3/20)	51, Southern (11/29/20)
29, vs. Southern (11/29/20)	18, vs. Kentucky (12/3/20)	Field Goals	23, Kentucky (12/3/20)	21, Southern (11/29/20)
63, vs. Southern (11/29/20)	49, vs. Kentucky (12/3/20)	Field Goals Attempted	63, Kentucky (12/3/20)	60, Southern (11/29/20)
.460, vs. Southern (11/29/20)	.367, vs. Kentucky (12/3/20)	FG Pct.	.365, Kentucky (12/3/20)	.350, Southern (11/29/20)
8, vs. Kentucky (12/3/20)	4, vs. Southern (11/29/20)	3-Pt. FG Made	5, Kentucky (12/3/20)	0, Southern (11/29/20)
24, vs. Southern (11/29/20)	22, vs. Kentucky (12/3/20)	3-Pt. FG Att.	23, Kentucky (12/3/20)	7, Southern (11/29/20)
.364, vs. Kentucky (12/3/20)	.167, vs. Southern (11/29/20)	3-Pt. FG Pct.	.217, Kentucky (12/3/20)	.000, Southern (11/29/20)
5, vs. Kentucky (12/3/20)	4, vs. Southern (11/29/20)	Free Throws	9, Southern (11/29/20)	-
			9, Kentucky (12/3/20)	
9, vs. Kentucky (12/3/20)	8, vs. Southern (11/29/20)	Free Throws Attempted	20, Southern (11/29/20)	12, Kentucky (12/3/20)
.556, vs. Kentucky (12/3/20)	.500, vs. Southern (11/29/20)	Free Throw Pct.	.750, Kentucky (12/3/20)	.450, Southern (11/29/20)
14, vs. Southern (11/29/20)	8, vs. Kentucky (12/3/20)	Offensive Rebounds	16, Kentucky (12/3/20)	12, Southern (11/29/20)
30, vs. Southern (11/29/20)	24, vs. Kentucky (12/3/20)	Defensive Rebounds	24, Kentucky (12/3/20)	22, Southern (11/29/20)
44, vs. Southern (11/29/20)	33, vs. Kentucky (12/3/20)	Rebounds	40, Kentucky (12/3/20)	34, Southern (11/29/20)
14, vs. Southern (11/29/20)	12, vs. Kentucky (12/3/20)	Fouls	11, Kentucky (12/3/20)	9, Southern (11/29/20)
21, vs. Southern (11/29/20)	11, vs. Kentucky (12/3/20)	Assists	10, Kentucky (12/3/20)	3, Southern (11/29/20)
18, vs. Kentucky (12/3/20)	14, vs. Southern (11/29/20)	Turnovers	10, Kentucky (12/3/20)	9, Southern (11/29/20)
10, vs. Southern (11/29/20)	3, vs. Kentucky (12/3/20)	Blocked Shots	2, Kentucky (12/3/20)	0, Southern (11/29/20)
4, vs. Southern (11/29/20)	-	Steals	13, Kentucky (12/3/20)	9, Southern (11/29/20)
4, vs. Kentucky (12/3/20)				
.667 (2Q), vs. Southern (11/29/20)	.250 (4Q), vs. Kentucky (12/3/20)	FG Pct. in a Qtr	.583 (4Q), Kentucky (12/3/20)	.071 (4Q), Southern (11/29/20)
.472 (2H), vs. Southern (11/29/20)	.360 (2H), vs. Kentucky (12/3/20)	FG Pct. in a Half	.483 (2H), Kentucky (12/3/20)	.241 (2H), Southern (11/29/20)
.500 (1H), vs. Kentucky (12/3/20)	.083 (2H), vs. Southern (11/29/20)	3-Pt. FG Pct. in a Half	.286 (1H), Kentucky (12/3/20)	.000 (1H) & (2H), Southern (11/29/20)
.800 (1H), vs. Kentucky (12/3/20)	.250, (2H), vs. Kentucky (12/3/20)	FT Pct. in a Half	.750 (1H & 2H), Kentucky (12/3/20)	.000 (1H), Southern (11/29/20)

\* - school record | ^ - Bramlage Coliseum record

+ + + + +

## K-STATE CAREER LISTS

## CAREER POINTS SCORED

1. Kendra Wecker (2001-05) . . . . .	2,333
2. Nicole Ohlde (2000-04) . . . . .	2,241
3. Brittany Chambers (2009-13) . . . . .	2,156
4. Ashley Sweat (2006-10) . . . . .	1,805
5. Laurie Koehn (2001-05) . . . . .	1,733
6. Diana Miller (1987-91) . . . . .	1,705
7. Eileen Feeney (1976-80) . . . . .	1,670
Nadira Hazim (1987-91) . . . . .	1,670
9. Peyton Williams (2016-20) . . . . .	1,553
10. Breanna Lewis (2013-17) . . . . .	1,552
11. Tammie Romstad (1978-82) . . . . .	1,548
12. Brit Jacobson (1994-98) . . . . .	1,519
13. Shanele Stires (1992-95) . . . . .	1,344
14. Kimberly Dietz (2004-08) . . . . .	1,321
15. Gayla Williams (1977-81) . . . . .	1,320
16. Angie Finkes (1996-00) . . . . .	1,314
17. Marlies Gipson (2005-09) . . . . .	1,313
18. Megan Mahoney (2001-05) . . . . .	1,307
19. Kindred Wesemann (2013-17) . . . . .	1,295
20. Cassandra Jones (1982-86) . . . . .	1,271
21. Kayla Goth (2015-19) . . . . .	1,253
22. Jalana Childs (2008-12) . . . . .	1,237
23. Claire Coggins (2003-07) . . . . .	1,236
24. Janet Reusser (1972-76) . . . . .	1,227
25. Shalee Lehnning (2005-09) . . . . .	1,189
26. Angie Bonner (1981-84) . . . . .	1,170
27. Priscilla Gary (1981-83) . . . . .	1,169
28. Jan Laughlin (1971-75) . . . . .	1,165
29. Marsha Poppe (1973-77) . . . . .	1,152
30. Andria Jones (1993-97) . . . . .	1,126
31. Kim Price (1978-83) . . . . .	1,120
32. Carlisa Thomas (1983-87) . . . . .	1,116
33. Kristin Rethman (1998-02) . . . . .	1,099
34. Nicky Ramage (1996-00) . . . . .	1,096
35. Mary Jo Miller (1988-92) . . . . .	1,091
36. Sue Leiding (1983-87) . . . . .	1,071
37. Kim Woodlee (1997-2001) . . . . .	1,058
38. Laurie Miller (1975-79) . . . . .	1,053
39. LeAnn Wilcox (1976-80) . . . . .	1,049
40. Susie Norton (1972-76) . . . . .	1,036
41. Kristie Bahner (1987-91) . . . . .	1,017
42. Susan Green (1984-87) . . . . .	1,001

## On the verge:

Rachel Ranke (2017-present) . . . . . 821

## CAREER ASSISTS

1. Shalee Lehnning (2005-09) . . . . .	800*
2. Megan Mahoney (2001-05) . . . . .	589
3. Mary Jo Miller (1988-92) . . . . .	562
4. Kayla Goth (2015-19) . . . . .	540
5. Mariah White (2009-13) . . . . .	455
6. Shaelyn Martin (2014-18) . . . . .	423
7. Kendra Wecker (2001-05) . . . . .	379
Cassandra Jones (1982-86) . . . . .	379
9. Nicole Ohlde (2000-04) . . . . .	367
10. Brittany Chambers (2009-13) . . . . .	363
11. Carlisa Thomas (1983-87) . . . . .	347
12. Kindred Wesemann (2013-17) . . . . .	329
13. Betsy Sloan (1979-83) . . . . .	322
14. Kimberly Dietz (2004-08) . . . . .	306
15. Kristin Rethman (1998-02) . . . . .	294
16. Nadira Hazim (1987-91) . . . . .	278
17. Jenny Coalson (1995-00) . . . . .	277
18. Brit Jacobson (1994-98) . . . . .	276
19. Susan Green (1984-87) . . . . .	275
20. Gayla Williams (1979-81) . . . . .	249
21. Chelsea Domenico (2001-05) . . . . .	240
22. Diana Miller (1987-91) . . . . .	236
23. Kim Woodlee (1997-01) . . . . .	233
24. Peyton Williams (2016-20) . . . . .	221
25. Laurie Koehn (2001-05) . . . . .	218
26. Claire Coggins (2003-07) . . . . .	213
27. Elyse Funk (1987-90) . . . . .	211
28. Marlies Gipson (2005-09) . . . . .	207
29. Missy Decker (1994-97) . . . . .	205
30. Kjersten Larson (1994-97) . . . . .	198
31. Ashia Woods (2011-15) . . . . .	195
32. Kari Kincaid (2006-10) . . . . .	189

## CAREER REBOUNDS

1. Kendra Wecker (2001-05) . . . . .	1,087
2. Nicole Ohlde (2000-04) . . . . .	995
3. Peyton Williams (2016-20) . . . . .	967
4. Carlisa Thomas (1984-87) . . . . .	923
5. Shalee Lehnning (2005-09) . . . . .	914
6. Breanna Lewis (2013-17) . . . . .	865
7. Brittany Chambers (2009-13) . . . . .	862
8. Marlies Gipson (2005-09) . . . . .	811
9. Megan Mahoney (2001-05) . . . . .	804
10. Eileen Feeney (1976-80) . . . . .	783
11. Shaelyn Martin (2014-18) . . . . .	782
12. Tammie Romstad (1978-82) . . . . .	779
13. Diana Miller (1987-91) . . . . .	747
14. Laurie Miller (1975-79) . . . . .	726
15. Shanele Stires (1992-95) . . . . .	701
16. Kristie Bahner (1987-91) . . . . .	698
17. Angie Finkes (1997-00) . . . . .	627
18. Ashley Sweat (2006-10) . . . . .	604
19. Kim Price (1978-83) . . . . .	585
20. Leah Honeycutt (1989-93) . . . . .	580
21. Marsha Poppe (1973-77) . . . . .	579
22. Nicky Ramage (1997-00) . . . . .	561
23. Nadira Hazim (1988-91) . . . . .	554
24. Angie Bonner (1982-84) . . . . .	540
25. Brit Jacobson (1995-98) . . . . .	539
Branshea Brown (2008-12) . . . . .	539
27. Beth Boggs (1976-79) . . . . .	530
28. Andria Jones (1994-97) . . . . .	515
29. Margo Jones (1975-78) . . . . .	513
30. Mariah White (2009-13) . . . . .	510

## On the verge:

Ayoka Lee (2018-present) . . . . . 344

## CAREER BLOCKS

1. Breanna Lewis (2013-17) . . . . .	282
2. Marlies Gipson (2005-09) . . . . .	257
3. Nicole Ohlde (2000-04) . . . . .	204
4. Shana Wheeler (2004-08) . . . . .	146
5. Peyton Williams (2016-20) . . . . .	119
6. Brie Madden (2001-05) . . . . .	104
7. Olga Firsova (1998-00) . . . . .	100
8. Ayoka Lee (2018-present) . . . . .	95
9. Jessica Sheble (2013-17) . . . . .	77
10. Branshea Brown (2008-12) . . . . .	76

## CAREER FG PCT. (MIN. 350 ATTEMPTS)

1. Tina Dixon (1982-84) . . . . .	607 (242-399)
2. Angie Bonner (1981-84) . . . . .	593 (422-712)
3. Priscilla Gary (1981-83) . . . . .	558 (497-890)
4. Nicole Ohlde (2000-04) . . . . .	557 (882-1,584)
5. Jennifer Jones (1982-85) . . . . .	551 (411-746)
6. Nicky Ramage (1996-00) . . . . .	540 (422-781)
7. Tammie Romstad (1978-82) . . . . .	529 (655-1,237)
8. Kristie Bahner (1987-91) . . . . .	524 (369-704)
9. Breanna Lewis (2013-17) . . . . .	524 (666-1,271)
10. Shalee Lehnning (2005-09) . . . . .	514 (426-828)

## On the verge:

Ayoka Lee (2018-present) . . . . . 565 (192-340)

## CAREER 3-PT FGS MADE

1. Laurie Koehn (2001-05) . . . . .	392*
2. Brittany Chambers (2009-13) . . . . .	350
3. Kim Woodlee (1997-01) . . . . .	285
4. Kristin Rethman (1998-02) . . . . .	266
5. Kindred Wesemann (2013-17) . . . . .	264
6. Kimberly Dietz (2004-08) . . . . .	230
7. Claire Coggins (2003-07) . . . . .	185
8. Rachel Ranke (2017-present) . . . . .	177
9. Missy Decker (1993-97) . . . . .	176
10. Bri Craig (2012-16) . . . . .	161
11. Kendra Wecker (2001-05) . . . . .	153

\* - ranks tied for 9th in NCAA Division I history

## CAREER 3-PT FGS ATTEMPTED

1. Brittany Chambers (2009-13) . . . . .	974
2. Laurie Koehn (2001-05) . . . . .	942
3. Kindred Wesemann (2013-17) . . . . .	764
4. Kim Woodlee (1997-01) . . . . .	682
5. Kimberly Dietz (2004-08) . . . . .	679
6. Kristin Rethman (1998-02) . . . . .	609
7. Bri Craig (2012-16) . . . . .	567
8. Rachel Ranke (2017-present) . . . . .	556
9. Claire Coggins (2003-07) . . . . .	534
10. Missy Decker (1993-97) . . . . .	461
11. Kari Kincaid (2006-10) . . . . .	444

## K-STATE PROGRAM INFORMATION

Seasons . . . . .	53rd (First Year: 1968-69)
Total Games . . . . .	1,579 (970-609, 614)
Big 12 Games . . . . .	402 (202-200, 502)
Big 12 Championships . . . . .	2 (2003-04 and 2007-08)
NCAA Tournament Appearances . . . . .	16 (Last in 2019)
NCAA Tournament Games (Record) . . . . .	29 (13-16, 448)
WNIT Tournament Appearances . . . . .	6 (Last in 2018)
WNIT Tournament Games (Record) . . . . .	21 (16-5, 762)
20-Win Seasons . . . . .	25 (Last: 2018-19)
Overtime Games . . . . .	55 (28-27, 509)
Double Overtime Games . . . . .	6 (3-3, 500)
Triple Overtime Games . . . . .	1 (0-1, 000)
100-Point Games . . . . .	24 (24-0, 1,000)
Bramlage Coliseum Games . . . . .	485 (345-140, 711)

## Wins

First Win . . . . .	38-25 vs. Bethel (1968)
100th Win . . . . .	80-37 vs. Kansas (1/24/75)
200th Win . . . . .	64-62 at Missouri (2/6/79)
300th Win . . . . .	78-68 at Kansas (2/23/83)
400th Win . . . . .	73-54 at Missouri State (12/19/89)
500th Win . . . . .	80-67* vs. Oklahoma (1/21/96)
600th Win . . . . .	82-68 vs. Arkansas (3/17/02)
700th Win + . . . . .	77-63 vs. Nebraska (3/24/06)
800th Win % . . . . .	69-64 at Nebraska (2/19/11)
900th Win ! . . . . .	62-49 vs. UT-Arlington (12/7/16)
1st Big Eight Win . . . . .	62-53 vs. Nebraska (1/16/76)
1st Big 12 Win . . . . .	68-67 vs. Texas (1/11/97)
50th Big 12 Win . . . . .	88-49 at Kansas (1/8/03)
100th Big 12 Win . . . . .	45-42 at Iowa State (2/13/08)
150th Big 12 Win . . . . .	52-51 vs. Oklahoma State (1/28/15)
200th Big 12 Win . . . . .	60-51 vs. Iowa State (2/26/20)

\* - win later forfeited by institution; + - 2006 Postseason WNIT quarterfinals; % - 13th women's team in NCAA Division I history to reach 800 wins; ! - 20th women's team in NCAA Division I history to reach 900 wins

## Games

First Game . . . . .	38-25 W, vs. Bethel (1968)
100th Game . . . . .	52-56 L, vs. Southern Conn. St. (3/22/73)
200th Game . . . . .	59-74 L, vs. William Penn (3/6/76)
300th Game . . . . .	92-104 L, vs. Valdosta State (3/17/79)
400th Game . . . . .	76-67 W, vs. Old Dominion (3/18/82)
500th Game . . . . .	69-65 W at Northern Illinois (12/7/86)
600th Game . . . . .	84-83 W, at Oklahoma (2/1/89)
700th Game . . . . .	75-55 W, vs. Missouri Western (12/19/93)
800th Game . . . . .	47-58 L, vs. Iowa State (2/11/96)
900th Game . . . . .	80-32 W, vs. Alabama State (12/3/00)
1,000th Game . . . . .	84-40 W, vs. Western Illinois (1/3/03)
1,250th Game . . . . .	67-44 W, vs. Grambling State (11/12/10)
1,500th Game . . . . .	75-50 L, at Baylor (1/20/18)
1st Big Eight Game . . . . .	62-53 W vs. Nebraska (1/16/76)
1st Big 12 Game . . . . .	54-70 L at Kansas (1/4/97)
100th Big 12 Game . . . . .	88-54 W at Nebraska (1/19/03)
200th Big 12 Game . . . . .	58-54 W vs. Missouri (2/4/09)
300th Big 12 Game . . . . .	63-51, L at West Virginia (1/21/15)

# **GAME 1** Southern Kansas State November 29, 2020 | Manhattan, Kan. 51 66

## **Southern (0-1)**

No.	N A M E	FG	3FG	FT	RB	PF	TP	A	MIN
22	Taneera Moore	f	0-1	0-0	0-0	0-4-4	2	0	25
44	Raven White	c	2-4	0-0	2-4	3-0-3	3	6	30
04	Chloe Fleming	g	3-8	0-0	0-4	0-3-3	1	6	18
20	Amari McWain	g	1-10	0-2	1-2	3-3-6	1	3	30
25	Genovea Johnson	g	10-22	0-2	1-2	1-4-5	1	21	24
01	Cabria Lee		1-5	0-2	0-0	0-2-2	0	2	16
05	Nakia Kincey		0-3	0-0	0-0	0-1-1	0	0	16
11	Zaria Harleaux		1-2	0-0	1-2	0-2-2	0	3	16
12	Tyneisha Metcalf		3-5	0-1	4-6	0-1-1	1	10	25
TEAM		5-2-7							
Totals		21-60	0-7	9-20	12-22-34	9	51	3	200

	1st Q	2nd Q	3rd Q	4th Q	Game
Field Goals	.438	.467	.400	.071	.350
Three-Point FG	.000	.000	.000	.000	.000
Free Throws	.000	.000	.250	.571	.450
Deadball Rebounds					6
Blocks: 0; Steals: 9 (Fleming, 2)					

## **Kansas State (1-0)**

No.	N A M E	FG	3FG	FT	RB	PF	TP	A	MIN
13	Laura Macke	f	4-5	0-1	0-0	1-3-4	2	8	20
50	Ayoka Lee	c	8-15	0-0	1-2	5-4-9	1	17	27
04	Sydney Goodson	g	2-6	1-5	0-0	0-5-5	1	5	35
24	Emilee Ebert	g	2-5	0-2	0-0	0-4-4	3	4	25
43	Christianna Carr	g	5-11	3-7	2-2	1-3-4	0	15	30
02	Cymone Goodrich		0-1	0-0	0-0	0-0-0	2	0	10
03	Makayla Pippin		0-2	0-2	0-0	1-1-2	0	0	1
10	Jada Thorpe		0-0	0-0	0-0	0-0-0	0	0	1
12	Rachel Ranke		3-10	0-6	1-2	0-1-1	1	7	2
23	Jada Moore		3-5	0-0	0-0	1-2-3	2	6	2
33	Ashley Ray		0-0	0-0	0-0	0-0-0	0	0	1
41	Taylor Lauterbach		2-3	0-1	0-2	1-2-3	2	4	0
TEAM		4-5-9							
Totals		29-63	4-24	4-8	14-30-44	14	66	21	200

	1st Q	2nd Q	3rd Q	4th Q	Game
Field Goals	.267	.667	.467	.476	.460
Three-Point FG	.167	.333	.000	.100	.167
Free Throws	1.000	.000	.500	.000	.500
Deadball Rebounds					4
Blocks: 10 (Lee, 4; Ebert, 4); Steals: 4					

Officials: Julie Krommenhoek, Roy Gulbeyan, Zac Brost  
Technical Fouls: Southern - None; Kansas State-None | Attendance: -

Score by Periods	1st	2nd	3rd	4th	Total
Southern	14	14	13	10	51
Kansas State	11	18	16	21	66

# **GAME 2** (11/12) Kentucky Kansas State December 3, 2020 | Manhattan, Kan. 60 49

## **Kentucky (3-0)**

No.	N A M E	FG	3FG	FT	RB	PF	TP	A	MIN
03	KeKe McKinney	f	2-5	0-0	1-2	4-4-8	4	5	1
44	Dre'Una Edwards	f	7-15	1-2	1-2	7-5-12	2	16	2
05	Blair Green	g	1-2	1-2	4-4	0-3-3	1	7	3
10	Rhynne Howard	g	3-14	0-7	2-2	1-5-6	2	8	1
15	Chasity Patterson	g	5-11	1-4	0-0	2-0-2	1	11	2
00	Olivia Owens		1-5	0-1	0-0	1-1-2	0	2	0
01	Robyn Benton		4-10	2-6	1-2	1-4-5	1	11	1
12	Treasure Hunt		0-0	0-0	0-0	0-0-0	0	0	0
TEAM		0-2-2							
Totals		23-63	5-23	9-12	16-24-40	11	60	10	200

	1st Q	2nd Q	3rd Q	4th Q	Game
Field Goals	.263	.267	.412	.583	.365
Three-Point FG	.250	.333	.167	.000	.217
Free Throws	1.000	.500	.750	.750	.750
Deadball Rebounds					1
Blocks: 2 (McKinney & Edwards); Steals: 13 (Edwards, 4; Benton, 3)					

## **Kansas State (1-1)**

No.	N A M E	FG	3FG	FT	RB	PF	TP	A	MIN
13	Laura Macke	f	3-6	1-2	1-4	2-1-3	1	8	1
50	Ayoka Lee	c	0-1	0-0	2-2	1-3-4	0	2	0
04	Sydney Goodson	g	1-7	0-3	0-0	0-2-2	2	2	2
24	Emilee Ebert	g	1-1	1-1	0-0	0-4-4	2	3	2
43	Christianna Carr	g	5-14	4-9	1-2	1-4-5	2	15	0
02	Cymone Goodrich		1-4	0-0	0-0	0-2-2	1	2	2
12	Rachel Ranke		5-12	2-7	0-0	1-3-4	2	12	3
33	Ashley Ray		1-2	0-0	0-0	1-1-2	0	2	1
41	Taylor Lauterbach		1-2	0-0	1-1	1-4-5	2	3	0
TEAM		1-1-2							
Totals		18-49	8-22	5-9	8-25-33	12	49	11	200

	1st Q	2nd Q	3rd Q	4th Q	Game
Field Goals	.417	.333	.462	.250	.367
Three-Point FG	.500	.500	.200	.286	.364
Free Throws	.800	.000	.500	.000	.556
Deadball Rebounds					4
Blocks: 3 (Carr, Ebert & Ray); Steals: 4 (Goodson, 3)					

Officials: Brian Garland, Metta Christensen, Doug Knight  
Technical Fouls: Kentucky - None; Kansas State-None | Attendance: 502

Score by Periods	1st	2nd	3rd	4th	Total
Kentucky	14	11	18	17	60
Kansas State	16	11	14	8	49

## 2020-21 PLAYER QUICK HIT STATS &amp; NOTES

1-1, 0-0 Big 12 | Last 5: 1-1 | Last 10: 1-1

	PPG	FG%	3FG%	FT%	RPG	APG	TOPG	SPG	BPG
K-State	57.5	.420	.261	.529	38.0	16.0	16.0	4.0	6.0
Opponent	55.5	.361	.172	.563	37.0	6.5	9.5	11.0	1.0

Head Coach.....Jeff Mittie (Missouri Western '89)  
 at Kansas State.....117-80 (.594; 7th season)  
 Overall.....571-315 (.644; 29th season)

Associate Head Coach Brian Ostermann (7th season)  
 Assistant Coach Chris Carr (4th season)  
 Assistant Coach Ebony Haliburton (2nd season)  
 Dir. of Recruiting Ops. Ebony Gilliam  
 Dir. of S/A Development Sadie Thramer

1

**Savannah SIMMONS**Guard | 6-1 | Jr.-2L  
Bel Air, Md. / The John Carroll School

	GP/S	MIN	PTS	REB	AST	FG	3FG	FT
20-21	-	-	-	-	-	-	-	-
Career	53/2	12.5	1.4	1.3	1.2	.264	.333	.636

- Career season-highs in nine categories in '19-20
- Scored a career-high 10 pts against Oral Roberts
- 1st player in program history from Maryland

2

**Cymone GOODRICH**Guard | 5-10 | Jr.-2L  
Chicago, Ill. / South Shore International Prep

	GP/S	MIN	PTS	REB	AST	FG	3FG	FT
20-21	2/0	12.9	1.0	1.0	1.0	.200	.000	.000
Career	63/4	14.6	3.0	1.3	0.8	.286	.202	.550

- 4 career games with 10 or more points
- Scored a career-high 12 points at Okla. St. (12/31/17)
- Dished out a career-high 5 assists vs. Chicago St.
- 3rd player in program history from Illinois

3

**Makayla PIPPIN**Forward | 6-1 | Jr.-TR  
Indianapolis, Ind. / Central Arizona College

	GP/S	MIN	PTS	REB	AST	FG	3FG	FT
20-21	1/0	4.0	0.0	2.0	1.0	.000	.000	.000
Career	1/0	4.0	0.0	2.0	1.0	.000	.000	.000

- Ranked 15th among JuCo players in the nation for 2019-20 by Girls Basketball Report
- 2019-20 NCAA WBB Third-Team All-American
- 2nd player in program history from Maryland

4

**Sydney GOODSON**Guard | 5-8 | Sr.-TR  
Argyle, Texas / Texas Tech | Arizona State

	GP/S	MIN	PTS	REB	AST	FG	3FG	FT
20-21	2/2	32.7	3.5	3.5	3.0	.231	.125	.000
Career*	84/49	25.5	7.1	3.7	2.2	.390	.338	.763

^ - at Texas Tech | \* Totals include Texas Tech and Arizona State

- Two-time Academic All-Big 12 First Team
- Rated as the No. 10 immediately eligible transfer for 2020-21 by ESPN.com
- Played in 55 games at Texas Tech
- Averaged 9.5 ppg, 5.3 rpg & 2.9 apg with the Lady Raiders

10

**Jada THORPE**Guard | 5-8 | R-Fr.-SQ  
Chicago, Ill. / Simeon Career Academy

	GP/S	MIN	PTS	REB	AST	FG	3FG	FT
20-21	1/0	1.0	0.0	0.0	0.0	.000	.000	.000
Career	1/0	1.0	0.0	0.0	0.0	.000	.000	.000

- Missed the 2019-20 season due to injury
- 3rd Wildcat in program history from Chicago
- Prospects Nation Watch List for Class of 2019

12

**Rachel RANKE**Guard | 6-1 | R-Jr.-2L  
Burnsville, Minn. / Eastview HS

	GP/S	MIN	PTS	REB	AST	FG	3FG	FT
20-21	2/0	23.5	9.5	2.5	2.5	.364	.154	.500
Career	77/68	31.1	10.7	3.4	1.4	.347	.318	.729

2020-21 Preseason All-Big 12 Honorable Mention | 2018 Big 12 All-Freshman Team  
Career 20-pt Games: 7 (Last - 21, vs. West Virginia, 3/9/19)

- Needs 179 pts to reach 1,000 in her career
- Career-high 26 pts at Texas Tech (2/26/18)
- Career-high 8 3-pt FGs made at Oklahoma (2/10/19)
- 8th in program history for career 3-pt FGs made (177)

13

**Laura MACKE**Forward | 6-2 | Jr.-2L  
Baileyville, Kan. / Nemaha Central HS

	GP/S	MIN	PTS	REB	AST	FG	3FG	FT
20-21	2/2	23.2	8.0	3.5	1.5	.636	.333	.250
Career	62/3	9.1	2.0	1.5	0.5	.484	.250	.556

- 2020 Academic All-Big 12 First Team
- Career-high 11 pts & 9 rebs vs. UIC (11/11/19)
- #53 wing in the nation by ESPNW Hoopgurlz
- 2018-19 Big 12 Academic All-Rookie Team

23

**Jada MOORE**Guard | 5-11 | Fr.-HS  
Denver, Colo. / Regis Jesuit HS

	GP/S	MIN	PTS	REB	AST	FG	3FG	FT
20-21	1/0	16.0	6.0	3.0	2.0	.600	.000	.000
Career	1/0	16.0	6.0	3.0	2.0	.600	.000	.000

- Fifth player in program history from the state of Colorado
- High school teammate of Stanford's Fran Belibi
- Played AAU for Colorado Premier and coached by former NBA player Keith Van Horn

24

**Emilee EBERT**Guard | 6-0 | So.-1L  
Frankfort, Kan. / Frankfort HS

	GP/S	MIN	PTS	REB	AST	FG	3FG	FT
20-21	2/2	30.4	3.5	3.5	4.0	.500	.333	.000
Career	26/2	10.0	1.6	0.9	0.9	.386	.357	.375

- Set career high w/ 6 assts vs. Southern (11/29)
- Set career high w/ 4 blks vs. Southern (11/29)
- Set Frankfort HS career scoring record (1,648 pts)
- 3-time all-state selection for VB
- State champion in track (long jump & 4x100)

33

**Ashley RAY**Center | 6-4 | R-Jr.-2L  
Girard, Kan. / Girard HS

	GP/S	MIN	PTS	REB	AST	FG	3FG	FT
20-21	2/0	6.7	1.0	1.0	1.0	.500	-	-
Career	74/7	7.4	1.2	1.1	0.1	.416	-	.372

- Played in 8 games in '19-20; missed remainder of season due to injury
- Career-high 9 pts & 7 rebs vs. Chicago State
- Has blocked two or more shots in four games
- Shortest last name in program history

41

**Taylor LAUTERBACH**Center | 6-6 | Fr.-HS  
Appleton, Wis. / Appleton West HS

	GP/S	MIN	PTS	REB	AST	FG	3FG	FT
20-21	2/0	12.7	3.5	4.0	0.0	.600	.000	.333
Career	2/0	12.7	3.5	4.0	0.0	.600	.000	.333

- Tallest player in program history
- 3rd player in program history from the state of Wisconsin
- Rated as 85th overall player among Class of 2020 by Prospects Nation; rated as 13th best center among Class of 2020 by ESPNW Hoopgurlz

43

**Christianna CARR**Guard | 6-1 | Jr.-1L  
Manhattan, Kan. / Manhattan HS

	GP/S	MIN	PTS	REB	AST	FG	3FG	FT
20-21	2/2	31.4	15.0	4.5	1.0	.400	.438	.750
Career	64/62	28.5	10.0	2.8	1.2	.313	.291	.718

2019 Big 12 All-Freshman Team  
Career 20-pt Games: 8 (Last - 20, at Kansas, 1/29/20)

- Career-high 5 3-pt FGs made (twice)
- Set a new career season-high for assists (50)
- Won Red Bull USA Basketball 3X East Regional in Sept.
- 2x USBWA Natl. Freshman of the Week

50

**Ayoka LEE**Center | 6-5 | So.-1L  
Byron, Minn. / Byron HS

	GP/S	MIN	PTS	REB	BLK	FG	3FG	FT
20-21	2/2	16.0	9.5	6.5	2.0	.500	-	.750
Career	31/31	30.8	15.3	11.1	3.1	.565	-	.705

2020 All-Big 12 First Team | 2020 Big 12 Freshman of the Year  
Career 20-pt Games: 9 (Last - 22, vs. TCU, 2/19/20)

- '21 Naismith, Wade, Wooden & Leslie Award candidate
- 2020-21 Preseason All-Big 12 Team (unanimous)
- 2020 Academic All-Big 12 First Team
- Big 12 record 12x Big 12 Freshman of the Week
- 19 career double-doubles; 1st player in program history with a 20-pt/20-reb double-double

## TOP SCORING PERFORMANCES

1. Ayoka Lee, vs. Southern (11/29/20)..... 17
2. Christianna Carr, twice ..... 15
4. Rachel Ranke, vs. Kentucky (12/3/20) ..... 12

## TOP REBOUNDING PERFORMANCES

1. Ayoka Lee, vs. Southern (11/29/20)..... 9
2. Three tied ..... 5

## TOP ASSIST PERFORMANCES

1. Emilee Ebert, vs. Southern (11/29/20)..... 6
2. Sydney Goodson, vs. Southern (11/29/20)..... 4
3. Rachel Ranke, vs. Kentucky (12/3/20) ..... 3