

# Gulf South Conference

## Spring 2021 Communication Document

<b>INSTITUTION:</b>	University of West Florida
---------------------	----------------------------

### Contacts

Position	Name	Mobile Number	Email
Director of Athletics:	Dave Scott	850-291-9108	<a href="mailto:dscott@uwf.edu">dscott@uwf.edu</a>

### BASEBALL

Visiting Team Contact: <i>(including pre-game screening submission)</i>	Justin Bennett	850-512-6058	<a href="mailto:Tbennett2@uwf.edu">Tbennett2@uwf.edu</a>
Officials Contact: <i>(including pre-game screening process)</i>	Justin Bennett	850-512-6058	<a href="mailto:Tbennett2@uwf.edu">Tbennett2@uwf.edu</a>
Athletic Training Contact:	Tait Carlisle	205-915-5257	<a href="mailto:Tcarlisle_c@uwf.edu">Tcarlisle_c@uwf.edu</a>

### SOFTBALL

Visiting Team Contact: <i>(including pre-game screening submission)</i>	Justin Bennett	850-512-6058	<a href="mailto:Tbennett2@uwf.edu">Tbennett2@uwf.edu</a>
Officials Contact: <i>(including pre-game screening process)</i>	Justin Bennett	850-512-6058	<a href="mailto:Tbennett2@uwf.edu">Tbennett2@uwf.edu</a>
Athletic Training Contact:	Robin Putira	321-212-9657	<a href="mailto:Rputira_c@uwf.edu">Rputira_c@uwf.edu</a>

### SOCCER

Visiting Team Contact: <i>(including pre-game screening submission)</i>	Opt Out		
Officials Contact: <i>(including pre-game screening process)</i>			
Athletic Training Contact:			

### VOLLEYBALL

Visiting Team Contact: <i>(including pre-game screening submission)</i>	Opt Out		
Officials Contact: <i>(including pre-game screening process)</i>			
Athletic Training Contact:			

### LACROSSE

Visiting Team Contact: <i>(including pre-game screening submission)</i>	N/A		
Officials Contact: <i>(including pre-game screening process)</i>			
Athletic Training Contact:			
<b>TENNIS</b>			
Visiting Team Contact: <i>(including pre-game screening submission)</i>	Garron Lucius	850-982-5114	<a href="mailto:glucius@uwf.edu">glucius@uwf.edu</a>
Officials Contact: <i>(including pre-game screening process)</i>	Garron Lucius	850-982-5114	<a href="mailto:glucius@uwf.edu">glucius@uwf.edu</a>
Athletic Training Contact:	Emily Carr	336-266-4686	<a href="mailto:Ecarr1@uwf.edu">Ecarr1@uwf.edu</a>

### Campus Information

Campus Masking Policy:
Masks are required inside all buildings at all times. Spectators must wear a mask at all indoor and outdoor venues at all times. Student athletes can remove masks when performing physical activities on the court/field only.
Necessary Visitor Pre-Arrival Screening Beyond GSC Policy:
GSC Policy
Local/State Government Masking Policy:
Masks are required in most buildings around Pensacola. Masks are required inside all buildings at all times. Spectators must wear a mask at all indoor and outdoor venues at all times.
Additional Visitor Guidelines applicable to Teams/Officials:
Concessions will not be available. Must be on the pass list to enter venues, no exceptions. No Pets. If you need showers please let you team contact know and we will accommodate. Please provide your own towels.

- Campus Map (Provide as Appendix)
- Hotel Partners (Provide as Appendix)
- Food Delivery Partners (Provide as Appendix)

### Sport Specific Items

<b>BASEBALL</b>	
Facility: Jim Spooner Field	
Fan Capacity Limits:	<i>Describe below</i>
Pass list only for home and visiting team. Visiting Team will be allowed 45 passes to distribute how they wish following GSC/NCAA Guidelines. Concessions not available.	

Ticketing Procedures:	<i>Describe below</i>
UWF will not have walk up ticket sales the day of the game. Only individuals on the pass list will be allowed entry into the venue. Gates open 60min prior to game start. Visiting Team will be allowed 45 passes to distribute how they wish following GSC/NCAA Guidelines.	
Tier 1 Screening Process (home/visitor/officials/staff):	<i>Describe below</i>
Athletic Training staff will screen home team players, coaches and bench staff Game Day Operations will screen all other Tier 1 individuals including Visiting Team staff that travel separate from the team, game day workers, and officials. Visiting team can turn in their temperature check screenings to UWF Head Athletic Trainer.	
Visiting Team Parking:	<i>Describe below</i>
Lot SP1 for fans. Lower SP1 for team bus.	
Officials Parking:	<i>Describe below</i>
Lot SP1 near baseball coaches trailer.	

<b>SOFTBALL</b>	
Facility: UWF Softball Complex	
Fan Capacity Limits:	<i>Describe below</i>
Pass list only for home and visiting team. Visiting Team will be allowed 45 passes to distribute how they wish following GSC/NCAA Guidelines. Concessions not available.	
Ticketing Procedures:	<i>Describe below</i>
UWF will not have walk up ticket sales the day of the game. Only individuals on the pass list will be allowed entry into the venue. Gates open 60min prior to game start. Visiting Team will be allowed 45 passes to distribute how they wish following GSC/NCAA Guidelines.	
Tier 1 Screening Process (home/visitor/officials/staff):	<i>Describe below</i>
Athletic Training staff will screen home team players, coaches and bench staff Game Day Operations will screen all other Tier 1 individuals including Visiting Team staff that travel separate from the team, game day workers, and officials. Visiting team can turn in their temperature check screenings to UWF Head Athletic Trainer.	
Visiting Team Parking:	<i>Describe below</i>
Lot SP1 for fans. Lower SP1 for team bus.	
Officials Parking:	<i>Describe below</i>

Lot SP1

<b>SOCCER</b>	
Facility:	
Fan Capacity Limits:	<i>Describe below</i>
OPT OUT	
Ticketing Procedures:	<i>Describe below</i>
Tier 1 Screening Process (home/visitor/officials/staff):	<i>Describe below</i>
Visiting Team Parking:	<i>Describe below</i>
Officials Parking:	<i>Describe below</i>

<b>VOLLEYBALL</b>	
Facility:	
Fan Capacity Limits:	<i>Describe below</i>
OPT OUT	
Ticketing Procedures:	<i>Describe below</i>
Tier 1 Screening Process (home/visitor/officials/staff):	<i>Describe below</i>

Visiting Team Parking:	<i>Describe below</i>
Officials Parking:	<i>Describe below</i>

<b>LACROSSE</b>	
Facility:	
Fan Capacity Limits:	<i>Describe below</i>
N/A	
Ticketing Procedures:	<i>Describe below</i>
Tier 1 Screening Process (home/visitor/officials/staff):	<i>Describe below</i>
Visiting Team Parking:	<i>Describe below</i>
Officials Parking:	<i>Describe below</i>

<b>TENNIS</b>	
Facility: Ralph Skeeter Carson Tennis Complex	
Fan Capacity Limits:	<i>Describe below</i>

Ticketing Procedures:	<i>Describe below</i>
Immediate family members only.	
Tier 1 Screening Process (home/visitor/officials/staff):	<i>Describe below</i>
Athletic Training staff will screen home team players, coaches and bench staff Game Day Operations will screen all other Tier 1 individuals including Visiting Team staff that travel separate from the team, game day workers, and officials. Visiting team can turn in their temperature check screenings to UWF Head Athletic Trainer.	
Visiting Team Parking:	<i>Describe below</i>
Bus parking and fan parking in Lot J.	
Officials Parking:	<i>Describe below</i>
Lot J	

### Athletic Training

Emergency Action Plan for Facilities should be posted online and/or shared with visitor prior to arrival.

Pharmacy:	Baptist Pharmacy; 9400 University Pkwy, Pensacola, FL 32514; 850-208-6100
Hospital:	Baptist Hospital; 1000 W Moreno Street Pensacola, FL 32501; 850-434-4011
Urgent Care:	Baptist Urgent Care; 9400 University Pkwy, Pensacola, FL 32514; 850-208-6130
Supplies Available for Visiting Team:	<i>Describe below by sport or in general</i>
Treatment table, taping table, small hydroc, hydration station with cups, injury ice with bags and wrap	

# Gulf South Conference

## Baseball Communication Document

### 2021



**University of West Florida Athletics**  
11000 University Parkway Building 54  
Pensacola, FL 32514  
850-474-3003 (Main Office)  
850-474-3342 (Fax)

[WWW.GOARGOS.COM](http://WWW.GOARGOS.COM)

**TABLE OF CONTENTS**

Campus Map – Page 3

UWF Preferred Hotels – Page 4

Restaurants – Page 5

Facility Layout – Page 6

Parking – Page 7

Emergency Action Plan – Page 8



## **HOTEL PARTNERS:**

### **Courtyard by Marriott Pensacola University Town Plaza**

451 Creighton Road, Pensacola, FL 32504

Contact: 850-857-7744

Proximity from UWF: 5 miles

### **Holiday Inn Pensacola University Area**

7813 N. Davis Highway, Pensacola, FL 32514

Sales Director: LeAnn Collins

Contact: 850-472-1400; [leann.collins@hipns.com](mailto:leann.collins@hipns.com)

Proximity from UWF: 4 miles

### **Hampton Inn and Suites Pensacola University Town Plaza**

7050 Plantation Road, Pensacola, FL 32504

Contact: 850-505-7500

Proximity from UWF: 5 miles

### **Marriott SpringHill Suites- Pensacola**

481 Creighton Road, Pensacola, FL 32504

Contact: 850-505-7500

Proximity from UWF: 4 miles

### **Hilton Garden Inn**

1144 Airport Blvd, Pensacola, FL 32504

Sales Director: Amanda Mills

Contact: 850-479-8900; [amills@highpointe.com](mailto:amills@highpointe.com)

Proximity from UWF: 6 miles

### **Hampton Inn Pensacola Airport**

2187 Airport Boulevard, Pensacola, FL 32504

Contact: 850-478-1123

Proximity from UWF: 7 miles

### **Residence Inn Marriott Pensacola Downtown**

601 East Chase Street, Pensacola, FL 32502

Sales Director: Becky Jones

Contact: 850-432-0202; [bjones@highpointe.com](mailto:bjones@highpointe.com)

Proximity to UWF 10 miles

### **Courtyard by Marriott Downtown Pensacola**

700 East Chase Street Pensacola, FL 32502

Sales Director: Tennessee Goad

Contact: 850-439-3330; [tgoad@highpointe.com](mailto:tgoad@highpointe.com)

Proximity to UWF: 10 miles

## **RESTAURANTS:**

### **Pita Pit**

1741 E. 9 Mile Road  
Pensacola, FL 32514  
850-542-4330

Proximity to UWF: 1.3 miles

### **Millers Ale House**

5906 N. Davis Highway  
Pensacola, FL 32503  
850-505-2670

Proximity to UWF: 6 miles

### **Sonny's Bar-B-Q**

6702 N. 9th Avenue  
Pensacola, FL 32504  
850-476-7168

Proximity to UWF: 5.4 miles

### **Domino's Pizza**

1001 E. 9 Mile Road  
Pensacola, FL 32534  
850-478-3030

Proximity to UWF: 3.1 miles

### **Firehouse Subs – Target Shopping Center**

1741 E. 9 Mile Road #13  
Pensacola, FL 32514  
850-476-1962

Proximity to UWF: 1.3 miles

### **Whataburger**

214 E. 9 Mile Road  
Pensacola, FL 32504  
850-477-0673

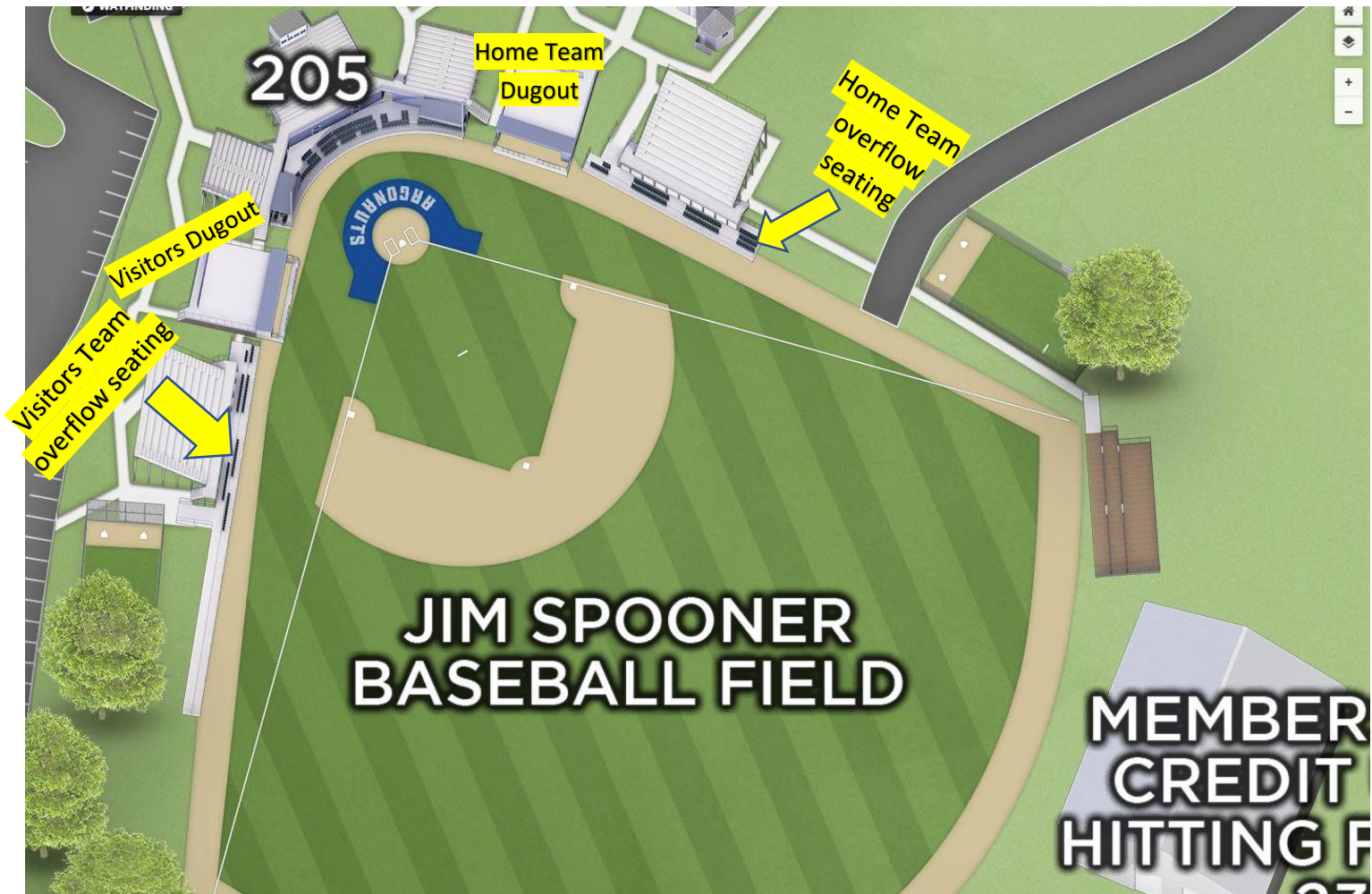
Proximity to UWF: 3.5 miles

### **Zaxbys**

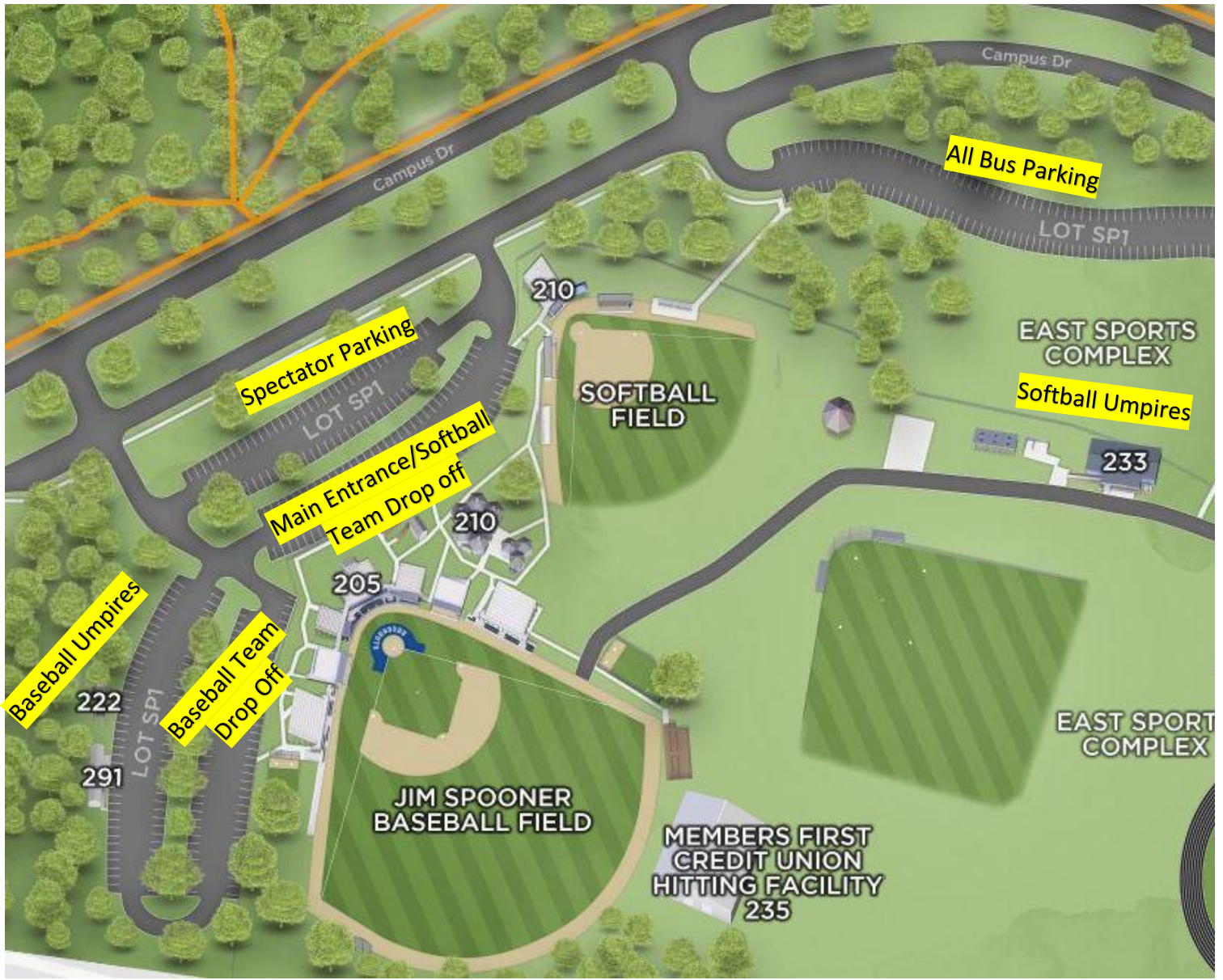
121 E. 9 Mile Road  
Pensacola, FL 32534  
850-912-8686

Proximity to UWF: 4.5 miles

**Facility Layout:**



**Parking:**



# Emergency Action Plan – University of West Florida Sports Medicine

## UWF Baseball and Softball Complex

**Address:** 910 Campus Drive, Pensacola, FL 32514

**GPS Coordinates:** Latitude 30.540651, Longitude -87.203388

**Helicopter Coordinates:** Latitude 30.540620, Longitude -87.203341 (UWF Soccer Field)

### Venue Directions

- **From University Parkway (Main Entrance):** Take a right onto Campus Drive. Continue straight through light at Campus Lane. **For Softball:** Take the second or third right to enter lot SP1 for the baseball/softball fields. Enter via gate 1. There will be an Athletics representative in the parking lot for assistance. **For Baseball:** Pass the baseball/softball field, take the fourth right at the UWF Soccer Field. Enter via gate 2. Continue on the service road to the left field entrance. There will be an Athletic representative at the service entrance for assistance.
- **From Campus Drive (East Entrance):** **For Softball:** Use the break in the median at the top of the third hill to turn left into lot SP1 for the baseball/softball fields. Enter via gate 1. There will be an Athletics representative in the parking lot for assistance. **For Baseball:** Turn left at the second break in the median at the UWF Soccer Field. Enter via gate 2. Continue on the service road to the left field baseball field entrance. There will be an Athletic representative at the service entrance for assistance.

### AED Location

Portable AED with on-site athletic trainer.

### Emergency Communication

- Call 9-1-1: Be prepared to provide name, address, telephone number, number of individuals injured, condition of injury, first aid treatment being provided, and specific directions to location. **DO NOT HANG UP UNTIL INSTRUCTED!**
- Call campus security at (850) 474-2415

### Emergency Equipment

Emergency supplies provided by the athletic trainer may include the AED, splint kit, cervical collar, and wound care supplies. There is an accessible cold-water immersion tub available for emergency use.

### Emergency Personnel: Chain of Command

1. Team Physician (if present)
2. Athletic Trainer
3. Coaching Staff
4. Other support staff including: Athletic Director, Game Operations Staff, Facility Coordinator, additional Athletic Trainers, Athletic Training Students, and Athletics Staff with current CPR certification

### Emergency Personnel Contact Numbers

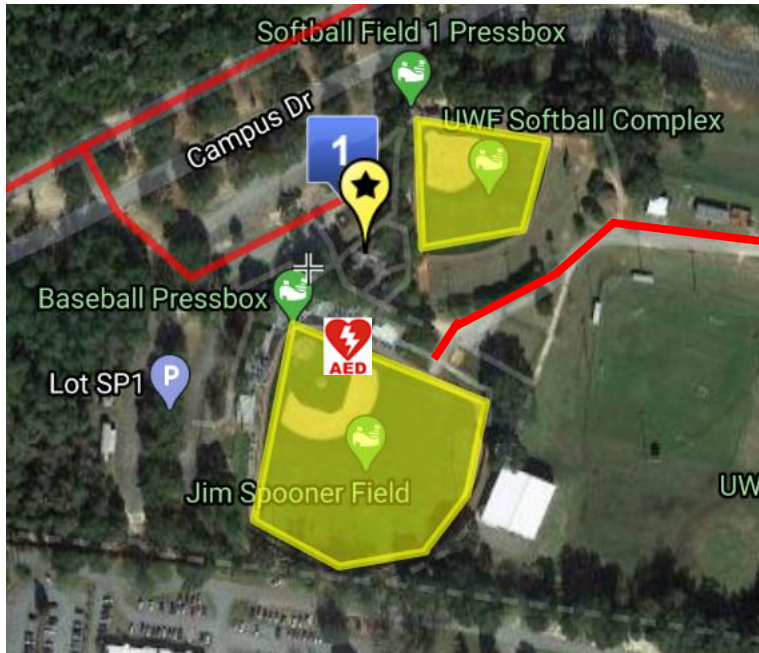
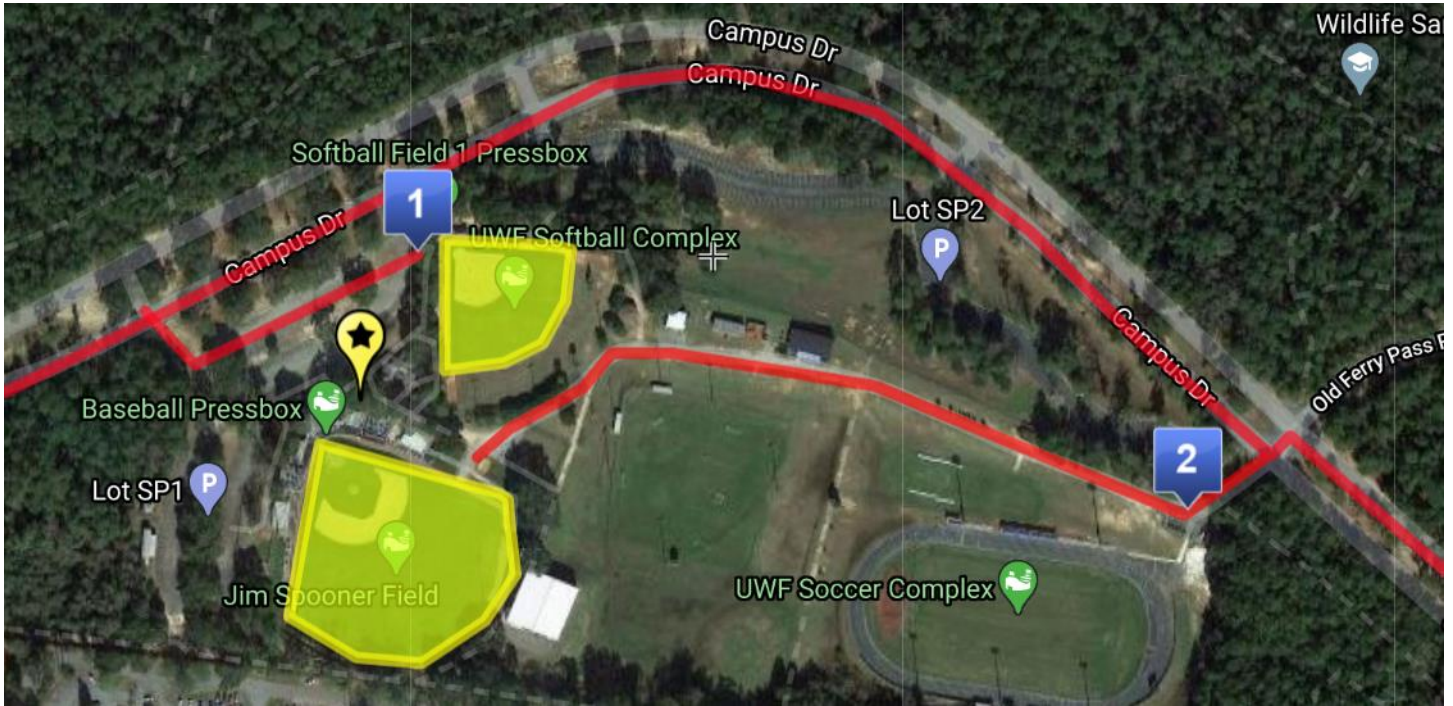
Assistant Athletic Trainer	Robin Putira, ATC	Cell: (321) 212-9657
Assistant Athletic Trainer	Tait Carlisle, ATC	Cell: (205) 915-5257
Assistant Athletic Trainer	Tyler Griffin, ATC	Cell: (205) 495-1472
Athletic Training Supervisor	Kacy Bledsoe, ATC	Cell: (337) 258-5058
UWF Associate Athletic Director	Tony Nguyen	Cell: (850) 291-2506




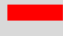

### Roles of First Responders/Emergency Personnel

1. Establish scene safety and begin immediate care to the individual(s), performed by most qualified personnel present
2. Ensure activation of emergency medical system (EMS) via 9-1-1
3. Retrieve emergency equipment
4. Direct EMS personnel to scene
  - Designate individual to “flag down” EMS and direct to scene
  - Ensure all access points are clear and accessible
5. Direct additional personnel to assist as needed
6. Contact athletic trainer if not present

# Emergency Action Plan – University of West Florida Sports Medicine

## UWF East Campus – Jim Spooner Baseball Field/Softball Complex



KEY	
	AED
	AT Center
	Field
	EMS Route
	Gate



# Gulf South Conference

## Softball Communication Document

### 2021



**University of West Florida Athletics**  
11000 University Parkway Building 54  
Pensacola, FL 32514  
850-474-3003 (Main Office)  
850-474-3342 (Fax)

[WWW.GOARGOS.COM](http://WWW.GOARGOS.COM)

## **TABLE OF CONTENTS**

Campus Map – Page 3

UWF Preferred Hotels – Page 4

Restaurants – Page 5

Facility Layout – Page 6

Parking – Page 7

Emergency Action Plan – Page 8



## **HOTEL PARTNERS:**

### **Courtyard by Marriott Pensacola University Town Plaza**

451 Creighton Road, Pensacola, FL 32504

Contact: 850-857-7744

Proximity from UWF: 5 miles

### **Holiday Inn Pensacola University Area**

7813 N. Davis Highway, Pensacola, FL 32514

Sales Director: LeAnn Collins

Contact: 850-472-1400; [leann.collins@hipns.com](mailto:leann.collins@hipns.com)

Proximity from UWF: 4 miles

### **Hampton Inn and Suites Pensacola University Town Plaza**

7050 Plantation Road, Pensacola, FL 32504

Contact: 850-505-7500

Proximity from UWF: 5 miles

### **Marriott SpringHill Suites- Pensacola**

481 Creighton Road, Pensacola, FL 32504

Contact: 850-505-7500

Proximity from UWF: 4 miles

### **Hilton Garden Inn**

1144 Airport Blvd, Pensacola, FL 32504

Sales Director: Amanda Mills

Contact: 850-479-8900; [amills@highpointe.com](mailto:amills@highpointe.com)

Proximity from UWF: 6 miles

### **Hampton Inn Pensacola Airport**

2187 Airport Boulevard, Pensacola, FL 32504

Contact: 850-478-1123

Proximity from UWF: 7 miles

### **Residence Inn Marriott Pensacola Downtown**

601 East Chase Street, Pensacola, FL 32502

Sales Director: Becky Jones

Contact: 850-432-0202; [bjones@highpointe.com](mailto:bjones@highpointe.com)

Proximity to UWF 10 miles

### **Courtyard by Marriott Downtown Pensacola**

700 East Chase Street Pensacola, FL 32502

Sales Director: Tennessee Goad

Contact: 850-439-3330; [tgoad@highpointe.com](mailto:tgoad@highpointe.com)

Proximity to UWF: 10 miles

## **RESTAURANTS:**

### **Pita Pit**

1741 E. 9 Mile Road  
Pensacola, FL 32514  
850-542-4330

Proximity to UWF: 1.3 miles

### **Millers Ale House**

5906 N. Davis Highway  
Pensacola, FL 32503  
850-505-2670

Proximity to UWF: 6 miles

### **Sonny's Bar-B-Q**

6702 N. 9th Avenue  
Pensacola, FL 32504  
850-476-7168

Proximity to UWF: 5.4 miles

### **Domino's Pizza**

1001 E. 9 Mile Road  
Pensacola, FL 32534  
850-478-3030

Proximity to UWF: 3.1 miles

### **Firehouse Subs – Target Shopping Center**

1741 E. 9 Mile Road #13  
Pensacola, FL 32514  
850-476-1962

Proximity to UWF: 1.3 miles

### **Whataburger**

214 E. 9 Mile Road  
Pensacola, FL 32504  
850-477-0673

Proximity to UWF: 3.5 miles

### **Zaxbys**

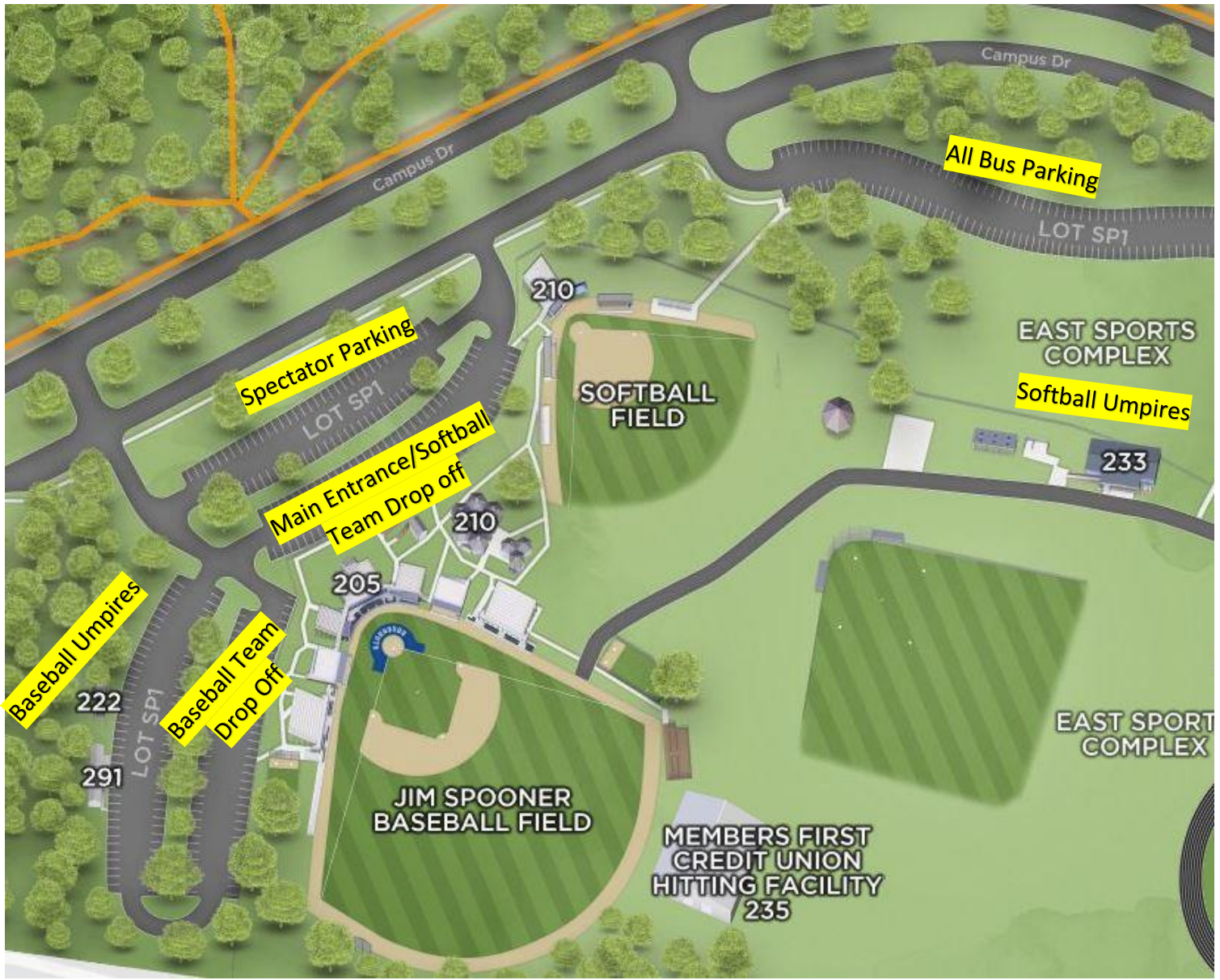
121 E. 9 Mile Road  
Pensacola, FL 32534  
850-912-8686

Proximity to UWF: 4.5 miles

**Facility Layout:**



**Parking:**



# Emergency Action Plan – University of West Florida Sports Medicine

## UWF Baseball and Softball Complex

**Address:** 910 Campus Drive, Pensacola, FL 32514

**GPS Coordinates:** Latitude 30.540651, Longitude -87.203388

**Helicopter Coordinates:** Latitude 30.540620, Longitude -87.203341 (UWF Soccer Field)

### Venue Directions

- **From University Parkway (Main Entrance):** Take a right onto Campus Drive. Continue straight through light at Campus Lane. **For Softball:** Take the second or third right to enter lot SP1 for the baseball/softball fields. Enter via gate 1. There will be an Athletics representative in the parking lot for assistance. **For Baseball:** Pass the baseball/softball field, take the fourth right at the UWF Soccer Field. Enter via gate 2. Continue on the service road to the left field entrance. There will be an Athletic representative at the service entrance for assistance.
- **From Campus Drive (East Entrance):** **For Softball:** Use the break in the median at the top of the third hill to turn left into lot SP1 for the baseball/softball fields. Enter via gate 1. There will be an Athletics representative in the parking lot for assistance. **For Baseball:** Turn left at the second break in the median at the UWF Soccer Field. Enter via gate 2. Continue on the service road to the left field baseball field entrance. There will be an Athletic representative at the service entrance for assistance.

### AED Location

Portable AED with on-site athletic trainer.

### Emergency Communication

- Call 9-1-1: Be prepared to provide name, address, telephone number, number of individuals injured, condition of injury, first aid treatment being provided, and specific directions to location. **DO NOT HANG UP UNTIL INSTRUCTED!**
- Call campus security at (850) 474-2415

### Emergency Equipment

Emergency supplies provided by the athletic trainer may include the AED, splint kit, cervical collar, and wound care supplies. There is an accessible cold-water immersion tub available for emergency use.

### Emergency Personnel: Chain of Command

1. Team Physician (if present)
2. Athletic Trainer
3. Coaching Staff
4. Other support staff including: Athletic Director, Game Operations Staff, Facility Coordinator, additional Athletic Trainers, Athletic Training Students, and Athletics Staff with current CPR certification

### Emergency Personnel Contact Numbers

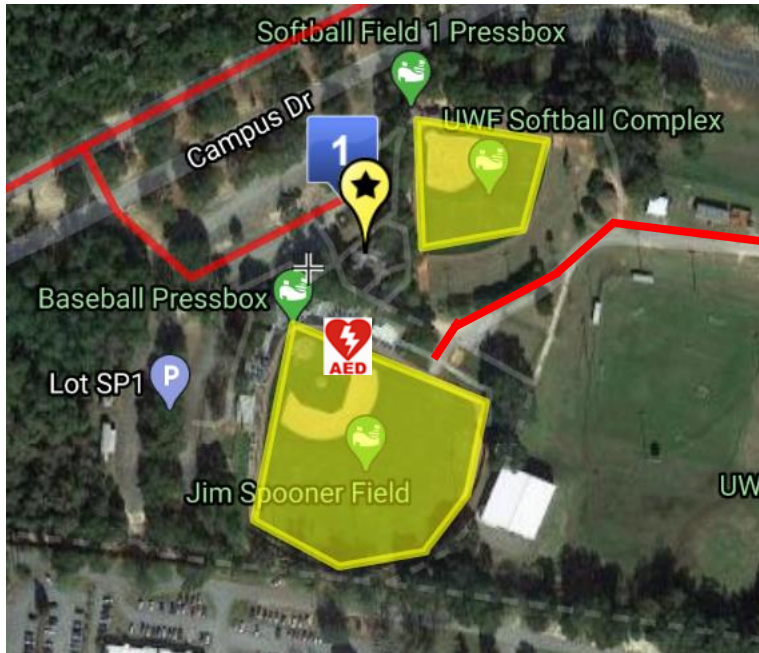
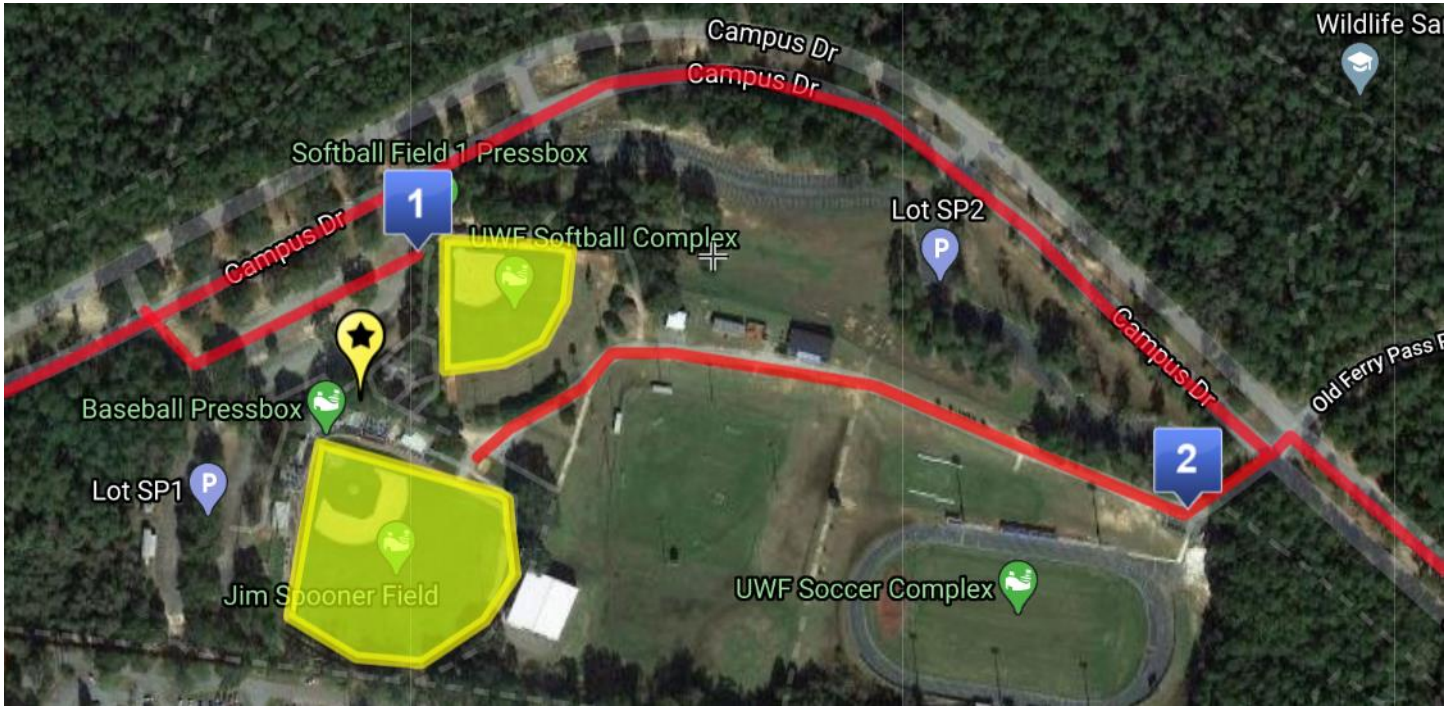
Assistant Athletic Trainer	Robin Putira, ATC	Cell: (321) 212-9657
Assistant Athletic Trainer	Tait Carlisle, ATC	Cell: (205) 915-5257
Assistant Athletic Trainer	Tyler Griffin, ATC	Cell: (205) 495-1472
Athletic Training Supervisor	Kacy Bledsoe, ATC	Cell: (337) 258-5058
UWF Associate Athletic Director	Tony Nguyen	Cell: (850) 291-2506




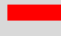

### Roles of First Responders/Emergency Personnel

1. Establish scene safety and begin immediate care to the individual(s), performed by most qualified personnel present
2. Ensure activation of emergency medical system (EMS) via 9-1-1
3. Retrieve emergency equipment
4. Direct EMS personnel to scene
  - Designate individual to “flag down” EMS and direct to scene
  - Ensure all access points are clear and accessible
5. Direct additional personnel to assist as needed
6. Contact athletic trainer if not present

# Emergency Action Plan – University of West Florida Sports Medicine

## UWF East Campus – Jim Spooner Baseball Field/Softball Complex



KEY	
	AED
	AT Center
	Field
	EMS Route
	Gate



# Gulf South Conference

## Tennis Communication Document

### 2021



**University of West Florida Athletics**  
11000 University Parkway Building 54  
Pensacola, FL 32514  
850-474-3003 (Main Office)  
850-474-3342 (Fax)

[WWW.GOARGOS.COM](http://WWW.GOARGOS.COM)

## **TABLE OF CONTENTS**

Campus Map – Page 3

UWF Preferred Hotels – Page 4

Restaurants – Page 5

Facility Layout – Page 6

Emergency Action Plan – Page 7



## **HOTEL PARTNERS:**

### **Courtyard by Marriott Pensacola University Town Plaza**

451 Creighton Road, Pensacola, FL 32504

Contact: 850-857-7744

Proximity from UWF: 5 miles

### **Holiday Inn Pensacola University Area**

7813 N. Davis Highway, Pensacola, FL 32514

Sales Director: LeAnn Collins

Contact: 850-472-1400; [leann.collins@hipns.com](mailto:leann.collins@hipns.com)

Proximity from UWF: 4 miles

### **Hampton Inn and Suites Pensacola University Town Plaza**

7050 Plantation Road, Pensacola, FL 32504

Contact: 850-505-7500

Proximity from UWF: 5 miles

### **Marriott SpringHill Suites- Pensacola**

481 Creighton Road, Pensacola, FL 32504

Contact: 850-505-7500

Proximity from UWF: 4 miles

### **Hilton Garden Inn**

1144 Airport Blvd, Pensacola, FL 32504

Sales Director: Amanda Mills

Contact: 850-479-8900; [amills@highpointe.com](mailto:amills@highpointe.com)

Proximity from UWF: 6 miles

### **Hampton Inn Pensacola Airport**

2187 Airport Boulevard, Pensacola, FL 32504

Contact: 850-478-1123

Proximity from UWF: 7 miles

### **Residence Inn Marriott Pensacola Downtown**

601 East Chase Street, Pensacola, FL 32502

Sales Director: Becky Jones

Contact: 850-432-0202; [bjones@highpointe.com](mailto:bjones@highpointe.com)

Proximity to UWF 10 miles

### **Courtyard by Marriott Downtown Pensacola**

700 East Chase Street Pensacola, FL 32502

Sales Director: Tennessee Goad

Contact: 850-439-3330; [tgoad@highpointe.com](mailto:tgoad@highpointe.com)

Proximity to UWF: 10 miles

## **RESTAURANTS:**

### **Pita Pit**

1741 E. 9 Mile Road  
Pensacola, FL 32514  
850-542-4330

Proximity to UWF: 1.3 miles

### **Millers Ale House**

5906 N. Davis Highway  
Pensacola, FL 32503  
850-505-2670

Proximity to UWF: 6 miles

### **Sonny's Bar-B-Q**

6702 N. 9th Avenue  
Pensacola, FL 32504  
850-476-7168

Proximity to UWF: 5.4 miles

### **Domino's Pizza**

1001 E. 9 Mile Road  
Pensacola, FL 32534  
850-478-3030

Proximity to UWF: 3.1 miles

### **Firehouse Subs – Target Shopping Center**

1741 E. 9 Mile Road #13  
Pensacola, FL 32514  
850-476-1962

Proximity to UWF: 1.3 miles

### **Whataburger**

214 E. 9 Mile Road  
Pensacola, FL 32504  
850-477-0673

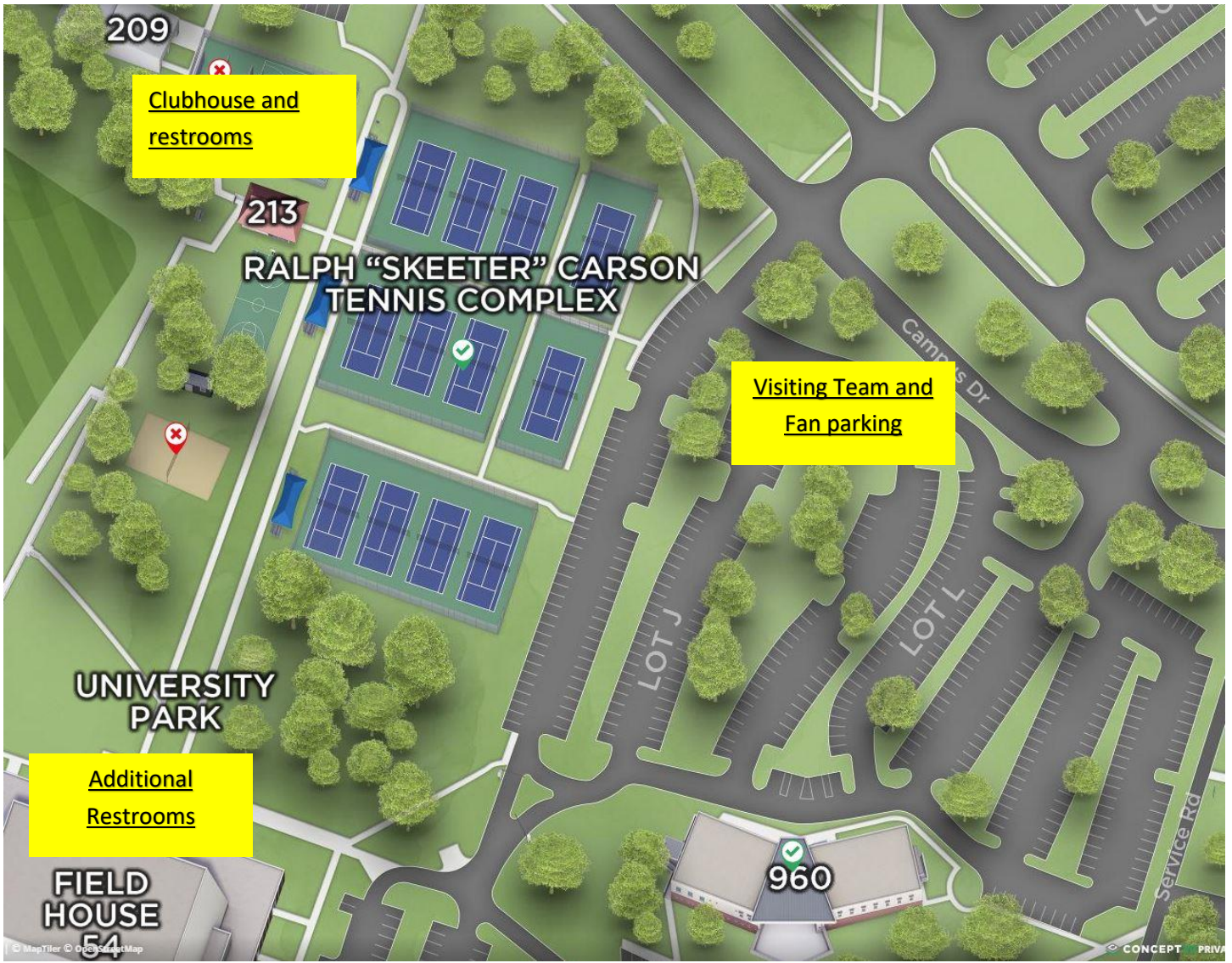
Proximity to UWF: 3.5 miles

### **Zaxbys**

121 E. 9 Mile Road  
Pensacola, FL 32534  
850-912-8686

Proximity to UWF: 4.5 miles

**Facility Layout:**



# Emergency Action Plan – University of West Florida Sports Medicine

## Ralph “Skeeter” Carson Tennis Complex

**Address:** 1978 Campus Drive Pensacola, FL 32514

**GPS Coordinates:** Latitude 30.547231, Longitude -87.222001

**Helicopter Coordinates:** Latitude 30.547270, Longitude -87.222025 (Recreation Field West of Tennis Complex)

### Venue Directions

- From University Parkway (Main Entrance): Turn left onto Campus Drive. Follow the road all the way around the curve, past the Football Complex. Enter into Parking Lot J, just past the tennis courts, on the right side. There will be an Athletics representative at the service entrance for assistance.
- From Campus Drive (East Entrance): Follow the road all the way around the curve, past the Football Complex. Enter into Parking Lot J, just past the tennis courts, on the right side. There will be an Athletics representative at the service entrance for assistance.

### AED Location

Portable AED with on-site athletic trainer. Wall-mounted AED located in the Athletic Training Center, Building 73.

### Emergency Communication

- Call 9-1-1: Be prepared to provide name, address, telephone number, number of individuals injured, condition of injury, first aid treatment being provided, and specific directions to location. **DO NOT HANG UP UNTIL INSTRUCTED!**
- Call campus security at (850) 474-2415

### Emergency Equipment

Emergency supplies provided by the athletic trainer may include the AED, splint kit, cervical collar, and wound care supplies. Cold water immersion tub available for emergency use behind the Tennis Clubhouse.

### Emergency Personnel: Chain of Command

1. Team Physician (if present)
2. Athletic Trainer
3. Coaching Staff
4. Other support staff including: Athletic Director, Game Operations staff, Facility Coordinator, additional Athletic Trainers, Athletic Training Students, and Athletics Staff with current CPR certification

## **Emergency Personnel Contact Numbers**

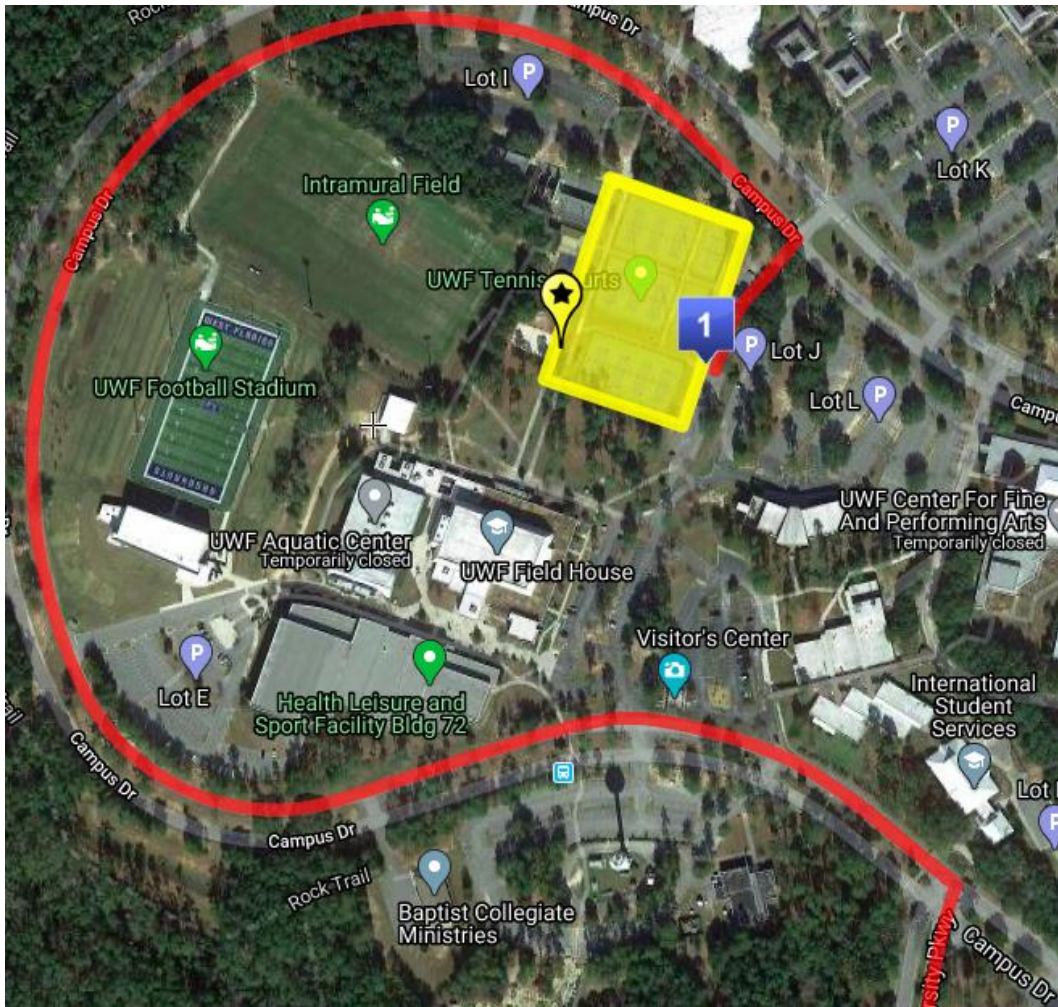
Graduate Assistant Athletic Trainer	Emily Carr, ATC	Cell: (336) 266-4686
Assistant Athletic Trainer	Amy Napier, ATC	Cell: (757) 619-9129
Assistant Athletic Trainer	Ryan Bussey, ATC	Cell: (706) 951-5821
Assistant Athletic Trainer	Tyler Griffin, ATC	Cell: (205) 495-1472
Athletic Training Supervisor	Kacy Bledsoe, ATC	Cell: (337) 258-5058
UWF Associate Athletic Director	Tony Nguyen	Cell: (850) 291-2506

## **Roles of First Responders/Emergency Personnel**

1. Establish scene safety and begin immediate care to the individual(s), performed by most qualified personnel present
2. Ensure activation of emergency medical system (EMS) via 9-1-1
3. Retrieve emergency equipment
4. Direct EMS personnel to scene
5. Designate individual to "flag down" EMS and direct to scene
  - Direct additional personnel to assist as needed
  - Ensure all access points are clear and accessible
6. Contact athletic trainer if not present

# Emergency Action Plan - University of West Florida Sports Medicine

## Ralph "Skeeter" Carson Tennis Complex



Key	
	AED
	Athletic Trainers' Location
	Courts
	Entrance
	EMS Route

