

CAA WOMEN'S BASKETBALL

Colonial Athletic Association Weekly Report - February 16, 2015

College of Charleston • Delaware • Drexel • Elon • Hofstra
James Madison • UNCW • Northeastern • Towson • William & Mary

CAA STANDINGS

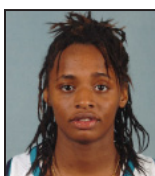
	Conference						Overall						
	W	L	Pct.	H	A	Stk.	W	L	Pct.	H	A	N	Stk.
RV/RV James Madison	13	0	1.000	6-0	7-0	W13	22	2	.917	11-0	10-1	1-1	W13
Drexel	9	4	.691	4-3	5-1	W1	15	9	.625	8-3	5-5	2-1	W1
Hofstra	9	5	.643	4-3	5-2	W3	16	9	.640	7-4	9-5	0-0	W3
Delaware	8	6	.571	5-2	3-4	L1	13	12	.520	9-4	4-7	0-1	L1
Elon	7	6	.538	3-4	4-2	L2	14	10	.583	8-5	6-4	0-1	L2
UNCW	6	7	.462	5-1	1-6	W2	10	14	.417	9-5	1-9	0-0	W2
Towson	6	8	.429	4-3	2-5	L2	10	16	.480	6-6	4-8	0-2	L2
William & Mary	6	8	.429	3-4	3-4	W1	12	13	.358	6-6	6-7	0-0	W1
College of Charleston	2	11	.154	2-5	0-6	L7	4	20	.167	4-5	0-12	0-3	L7
Northeastern	1	12	.077	1-5	0-7	L8	4	19	.174	3-6	1-12	0-1	L8

UPCOMING GAMES

Feb. 19	Drexel at College of Charleston	7:00 p.m.
	Elon at Northeastern	7:00 p.m.
	Towson at Hofstra	7:00 p.m.
	James Madison at UNCW	7:00 p.m.
Feb. 22	College of Charleston at Northeastern	2:00 p.m.
	Drexel at Delaware	2:00 p.m.
	Hofstra at James Madison	2:00 p.m.
	UNCW at Towson	2:00 p.m.
	William & Mary at Elon	2:00 p.m.
Feb. 26	Delaware at UNCW	7:00 p.m.
	William & Mary at Coll. of Charleston	7:00 p.m.
Feb. 27	Elon at Drexel	7:00 p.m.
	Northeastern at James Madison	7:00 p.m.
Mar. 1	UNCW at College of Charleston	1:00 p.m.
	Elon at Hofstra	1:00 p.m.
	Northeastern at William & Mary	2:00 p.m.
	James Madison at Delaware	2:00 p.m.
	Towson at Drexel	3:00 p.m.
Mar. 4	Drexel at Northeastern	7:00 p.m.
	Towson at William & Mary	7:00 p.m.
	Hofstra at UNCW	7:00 p.m.
	Coll. of Charleston at James Madison	7:00 p.m.
	Delaware at Elon	7:00 p.m.

NEWS & NOTES FROM AROUND THE CAA

CAA PLAYERS OF THE WEEK



NAQAIYYAH TEAGUE

So. • Guard
UNCW

Sophomore guard Naqaiyyah Teague averaged 21.0 points, 7.0 rebounds, and 3.0 assists per game while leading UNCW to a 2-0 week. She shot 56.5 percent from the field (13-for-23), including a 5-for-7 effort from three-point range, and converted 11 of 12 free throws on the week. She began the week by posting a career-high 24 points, including 20 in the second half, to help lift the Seahawks to a win at Elon. In the victory over Northeastern on Sunday, Teague tallied 18 points, seven rebounds, three assists, and two steals.



ANGELA MICKENS

Jr. • Guard
James Madison

Point guard Angela Mickens had an excellent effort over two games, averaging 11.0 points and 9.5 assists per game to help JMU to a 2-0 week. She also contributed 3.5 rebounds and 3.0 steals per game with an assist-turnover ratio of 6.33 (19 AST-3 TO). Mickens shot 75 percent (6-for-8) from the floor and 71.4 percent from the free throw line (10-for-14). Against Towson, Mickens tallied 15 points and 12 assists for her second-career point-assist double-double. She also had six rebounds, two steals, and a block in 39 minutes of action against the Tigers. In the Dukes' win over Delaware, Mickens collected seven points, seven assists, four steals, and a rebound while turning the ball over just once in 23 minutes.

CAA ROOKIE OF THE WEEK



ASHUNAE DURANT

Fr. • Guard
Hofstra

Guard Ashunae Durant had another stellar week for Hofstra, averaging 14.0 points and 8.5 rebounds per game off the bench in Hofstra's two wins. She shot 61.1 percent (11-for-18) for the week. Durant posted her seventh double-double of the year against the College of Charleston, finishing with 15 points and 11 rebounds. She followed that up with 13 points and six rebounds in the win at Elon. Durant has been named the CAA Rookie of the Week five times and the CAA Player of the Week once this season.



March 12-15

SHOW PLACE ARENA

UPPER MARLBORO, MD

Contact: Kelly McCarthy • (804) 525-1430 • kmccarthy@caasports.com

www.CAASports.com

facebook.com/CAASports

twitter.com/CAABasketball

YouTube.com/CAASportsProductions

CAA WOMEN'S BASKETBALL WEEKLY REPORT • FEBRUARY 16, 2015

CAA Weekly Awards

PLAYERS OF THE WEEK

11/17	Lauren Okafor, JMU
11/24	Precious Hall, JMU
12/1	Sarah Curran, Drexel
12/8	Kelly Loftus, Hofstra
12/15	Ashunae Durant, Hofstra
12/22	Kelva Atkins, UNCW Precious Hall, JMU
12/29	Rachel Pearson, Drexel
1/5	Ryan Flowers, UNCW
1/12	Lauren Okafor, JMU
1/19	Lauren Okafor, JMU
1/26	Brie Mobley, UNCW
2/2	Erika Brown, Delaware
2/9	Sam Coffey, Elon
2/16	
2/23	
3/2	

ROOKIES OF THE WEEK

11/17	Chastity Taylor, Delaware
11/24	Ashunae Durant, Hofstra
12/1	Shay Burnett, Elon
12/8	Ashunae Durant, Hofstra
12/15	Ashunae Durant, Hofstra
12/22	Malaya Johnson, Elon
12/29	Breonn Hughey, Towson
1/5	Malaya Johnson, Elon
1/12	Ashunae Durant, Hofstra
1/19	Abby Rendle, William & Mary
1/26	Shay Burnett, Elon
2/2	Jenna Green, William & Mary
2/9	Makeda Nicholas, Delaware
2/16	
2/23	
3/2	

IN THE POLLS

James Madison was ranked No. 23 *Associated Press* released on February 16. It is the first time since 2009 in which the Dukes have been ranked in the AP Poll.

- **Associated Press Poll:** The Dukes received votes in all but three weeks this season. James Madison's run of 16 consecutive weeks of receiving votes in the *Associated Press* Poll came to an end on January 12.
- **College Insider Mid-Major Top-25 Poll:** The Dukes were the second-ranked team in the *College Insider* Mid-Major Top-25 on February 10. JMU spent nine consecutive weeks in the top spot. Drexel received votes in the *College Insider* Poll as well.
- **USA Today Coaches Poll:** JMU has been recognized in the *USA Today* Poll every week this season by either receiving votes or a national ranking.
- On December 23, JMU checked back into the *USA Today* Coaches Poll coming in at No. 24.
- On November 25, the Dukes checked in at No. 23 in the *USA Today* Coaches Poll for the second consecutive week. Their No. 23 ranking was JMU's highest ranking since the final poll of the 1990-91 season when they checked in at No. 15.
- On November 18, the Dukes were ranked in the *USA Today* Coaches Poll for the first time since 2009-10 when they held at No. 25 for three consecutive weeks (December 14-28).

NATIONAL NOTICE

Through games played on February 15, several CAA players and teams were among the national statistical leaders.

- James Madison's **Precious Hall** is 22nd in the nation in scoring (20.6 ppg) and third in three-point field goals made per game (3.29).
- JMU's **Angela Mickens** in third in assists per game (7.8) and ninth in assist-turnover ratio (2.78).
- College of Charleston's **Bre Bolden** is 12th in steals per game (3.17).
- Elon's **Zora Stephenson** is 25th in three-pointers made per game (2.79).
- Towson's **LaTorri Hines-Allen** is 22nd in double-doubles (12).
- James Madison is 11th in rebounding margin (+10.5) and 13th in scoring margin (+15.4).
- Drexel is the national leader in free throw percentage (.789).
- Delaware is 18th in three-point field goal percentage (.368).
- William & Mary is 13th in steals per game (11.5).

THINKING PINK

A quick look the remaining breast cancer awareness games this month.

- **February 22:** Hofstra at JMU; Drexel at Delaware; College of Charleston at Northeastern

2015 ALLSTATE WBCA GOOD WORKS TEAM® HONORS

Delaware's **Stephanie Leon** was one of five NCAA Division I women's basketball student-athletes to be named to the 2015 Allstate WBCA Goodworks Team.

- A two-year team captain, Leon has committed her free time to volunteering with more than 10 community organizations ranging from elementary schools to churches and environmental agencies during her four years at Delaware. Upon graduation, she will join Teach for America. Leon was also the 2014 recipient of the CAA's Dean Ehlers Award.
- The Allstate WBCA Good Works Team recognizes a distinguished group of student-athletes who have demonstrated a commitment to enriching the lives of others and contributing to the greater good in their communities.
- In total, 93 student-athletes across all NCAA Divisions and the NAIA, including William & Mary's **Kyla Kerstetter**, were nominated for this award.

NAISMITH TROPHY MIDSEASON 30

- James Madison guard **Precious Hall** was named to the Naismith Trophy Women's Midseason 30 List, presented by AT&T.
- The award recognizes the top players in NCAA Division I women's basketball. The 10 national semifinalists will be announced on March 6.
- Hall is currently 22nd in the nation in scoring (20.6/g) and third in three-pointers made (3.29/g).
- In addition to scoring, she's third in the CAA in free throw percentage (.808) and is fifth in three-point field goal percentage (.391).
- The junior is the CAA's active career leader in scoring with 1,316 points. She's also among the active career leaders in assists (187), steals (122), and three-pointers made (179).

NANCY LIEBERMAN AWARD WATCH LIST

James Madison point guard **Angela Mickens** was named to the Nancy Lieberman Award Watch List by the Naismith Memorial Basketball Hall of Fame. The award recognizes the top point guard in NCAA Division I. Mickens is one of 30 points guards in the country to be recognized.

- The junior is third in the nation in assists (7.8/g) and ninth in assist-turnover ratio (2.78).
- Mickens is also fourth in the CAA in steals (2.2/g) and minute played (34.6/g).
- Mickens is the CAA career active leader in assists (378).

COSIDA ACADEMIC ALL-DISTRICT

For the second straight season, Elon's **Sam Coffey** has been named to the CoSIDA Academic All-District 3 First Team. Coffey, a senior forward, holds a 3.89 GPA in biochemistry. Earning All-District Academic First Team honors qualifies her for Academic All-America consideration.

Collegiate Basketball News RPI Rankings

thru games on 2/16

CONFERENCE	CAA TEAMS	NATIONAL
1. Big 12	20 JMU	6 South Carolina
2. ACC	78 Drexel	7 Iowa
3. SEC	106 Hofstra	8 Louisville
4. Big Ten	122 Elon	9 Kentucky
5. Pac-12	166 W&M	10 Oregon St.
6. A-10	172 Delaware	11 Arizona St.
7. American	227 Towson	12 Duke
8. West Coast	253 UNCW	13 Florida St.
9. Ivy League	275 CofC	14 UNC
10. Big East	290 NU	15 Dayton
11. A-Sun		16 FGCU
12. Horizon		17 GWU
13. CAA		18 Princeton
14. Sun Belt		19 Oklahoma
15. Big West		20 JMU

CAA WOMEN'S BASKETBALL WEEKLY REPORT • FEBRUARY 16, 2015

WBB TV SCHEDULE

N. 14	Coll. of Charleston at Kennesaw St.	7:00 PM
	ESPN3	
N. 18	Northeastern at Rutgers	7:00 PM
	BTN+	
N. 21	Hofstra at Fordham	7:00 PM
	SNY	
N. 28	College of Charleston v. UConn	8:30 PM
	SNY; ESPN3	
D. 07	Towson at Maryland	2:00 PM
	BTN+	
D. 29	James Madison at Vanderbilt	8:00 PM
	SEC+	
D. 31	UNCW at Stetson	1:00 PM
	ESPN3	
J. 25	Northeastern at Elon	3:00 PM
	ASN; CSN-MA+	
F. 08	William & Mary at Hofstra	1:00 PM
	ASN; CSN-MA+	
F. 15	Delaware at James Madison	1:00 PM
	ASN	
M. 01	UNCW at College of Charleston	1:00 PM
	ASN	
	Towson at Drexel	3:00 PM
	ASN	
M. 14	CAA Championship Semifinal #1	1:00 PM
	CSN-MA, TCN-P, CSN-NE	
	CAA Championship Semifinal #2	3:30 PM
	CSN-MA, TCN-P, CSN-NE	
M. 15	CAA Championship Game	1:00 PM
	CSN-MA, TCN-P, CSN-NE	

Legend

ASN.....American Sports Network
 BTN+.....Big Ten Network Plus/BTN2Go Internet Service
 CSN-MA.....Comcast SportsNet Mid-Atlantic
 CSN-MA+.....Comcast SportsNet Mid-Atlantic PLUS
 CSN-NE.....Comcast SportsNet New England
 SEC+.....SEC Network Plus/Watch ESPN Internet Service
 TCN-P.....The Comcast Network (Philadelphia ONLY)

#CAAHOOPS IN THE POLLS

	AP	USA	COLLEGE			
	POLL	TODAY	INSIDER	JMU	DEL	HOF
Preseason/	RV	RV	3	25	--	
Week 1	RV	RV	3	25	--	
Week 2 (Nov. 17)	RV	23	1	18	--	
Week 3 (Nov. 24)	RV	23	1	RV	--	
Week 4 (Dec. 1)	RV	RV	1	--	--	
Week 5 (Dec. 8)	RV	RV	1	--	--	
Week 6 (Dec. 15)	RV	RV	1	--	--	
Week 7 (Dec. 22)	RV	24	1	--	--	
Week 8 (Dec. 29)	RV	RV	1	--	--	
Week 9 (Jan. 5)	RV	RV	1	--	--	
Week 10 (Jan. 12)	--	RV	2	--	RV	
Week 11 (Jan. 19)	--	RV	2	DU	RV	
Week 12 (Jan. 26)	--	RV	2	RV	--	
Week 13 (Feb. 2)	RV	RV	2	RV	--	
Week 14 (Feb. 9)	RV	RV	2	RV	--	
Week 15 (Feb. 16)	23	N/A	N/A	N/A	N/A	
Week 16 (Feb. 23)						
Week 17 (Mar. 2)						
Week 18 (Mar. 9)						
Week 19 (Mar. 16)						
Final						

HOT SHOTS

- James Madison is 22-2 on the year, posting its tenth-consecutive, 20-win season.
- James Madison Head Coach **Kenny Brooks** picked up his **303rd career victory on February 15** to will surpass the legendary **Shelia Moorman** as the all-time winningest coach at JMU.
- William & Mary Head Coach **Ed Swanson** recorded his 300th victory as a Division I head coach on February 15.
- With its win at Elon on February 12, UNCW snapped a 15-game road losing skid.
- Towson's **LaTorri Hines-Allen** has recorded 11 20-point efforts in 26 games played this season. She also has 12 double-doubles to lead all CAA players. Hines-Allen is averaging 17.5 points and 9.6 rebounds per game on the year.
- James Madison's **Lauren Okafor** has posted double-digit rebounds in 12 of 24 games.
- Northeastern's **Samantha DeFreese** has posted double figures in 10 of the last 12 games, which includes five 20-point efforts.
- College of Charleston sophomore **Bre Bolden** has had at least one steal in 25 consecutive games dating back to last season.
- William & Mary guard **Jenna Green** has at least one assist in all but one game this season.
- Drexel is 9-3 in games decided by 10 points or less.
- Drexel has scored 60 or more points in six of its last seven games, after reaching that figure five times in the first 17 games.
- William & Mary has had eight games decided by three points or less and are 4-4 of those contests. Nineteen of the Tribe's 25 games have been decided by less than 10 points this season.
- Elon netted a season-high 15 three-pointers on February 5. It ties the third-highest, single-game total in CAA history. The last time a team hit 15 three-pointers was on December 9, 2007 by William & Mary.

IN THE RPI

Through games on February 16, the Colonial Athletic Association (CAA) as a whole was ranked 13th in the RPI ratings released by *Collegiate Basketball News*.

- Two CAA teams were ranked in the top-100. **James Madison** had an RPI of 20 while **Drexel's** RPI stood at 78.
- James Madison** had a season-best RPI of five on December 19 while the CAA has been ranked as high as tenth on several occasions.

ASSOCIATED PRESS POLL

(February 16)

1	Connecticut	(35)	24-1	875
2	South Carolina		24-1	831
3	Baylor		24-1	809
4	Notre Dame		23-2	772
5	Maryland		22-2	719
6	Tennessee		22-3	712
7	Oregon St		23-2	639
8	Louisville		22-3	624
9	Florida St		23-3	571
10	Duke		19-6	527
11	Kentucky		19-6	526
12	Arizona St		22-4	468
13	Iowa		21-4	453
14	Mississippi St		24-4	421
15	Texas A&M		19-6	361
16	Princeton		23-0	350
17	North Carolina		20-6	344
18	Stanford		19-7	296
19	Rutgers		19-6	274
20	Chattanooga		22-3	209
21	Nebraska		18-7	122
22	Florida Gulf Coast		23-2	74
23	James Madison		22-2	62
24	George Washington		22-3	59
25	Syracuse		18-8	41

OTHERS RECEIVING VOTES

Oklahoma 38, California 36, Seton Hall 20, South Florida 19, Northwestern 18, Gonzaga 16, Texas 12, DePaul 12, Green Bay 12, Dayton 11, LSU 9, Oklahoma St 8, Washington 6, Miami (FL) 5, Minnesota 4, Georgia 4, Arkansas-Little Rock 2, Quinnipiac 1, Western Kentucky 1, Pittsburgh 1, Wichita St 1

USA TODAY COACHES POLL

(February 10)

1	Connecticut	23-1	800
2	South Carolina	22-1	757
3	Baylor	22-1	741
4	Notre Dame	23-2	685
5	Maryland	21-2	671
6	Tennessee	20-3	643
7	Florida State	22-2	601
8	Louisville	20-3	561
9	Oregon State	21-2	533
10	Kentucky	18-5	499
11	Duke	18-6	440
12	Arizona State	21-3	424
13	Iowa	19-4	395
14	North Carolina	19-5	387
15	Mississippi State	23-3	347
16	Texas A&M	18-6	333
17	Rutgers	18-5	251
18	Princeton	21-0	229
19	Stanford	17-7	171
20	Nebraska	17-6	148
21	George Washington	21-2	145
22	Syracuse	17-7	143
23	Texas	15-7	103
24	Seton Hall	21-3	100
25	South Florida	19-4	64

OTHERS RECEIVING VOTES

James Madison 51; Georgia 37; Chattanooga 28; DePaul 24; California 21; Arkansas-Little Rock 10; Florida Gulf Coast 10; Northwestern 10; Gonzaga 8; LSU 8; Oklahoma 7; Washington 6; St. John's 5; Western Kentucky 4

COLLEGE INSIDER

MID-MAJOR Poll (February 10)

1	Princeton	(28)	21-0	768
2	James Madison	(1)	20-2	733
3	Chattanooga	(1)	21-3	704
4	Florida Gulf Coast		21-2	677
5	Gonzaga	(1)	19-4	647
6	Green Bay		18-4	603
7	Quinnipiac		21-3	581
8	Wichita State		18-4	559
9	UALR		19-3	505
10	BYU		19-5	483
11	Ohio		18-3	441
12	San Diego		19-4	411
13	Stetson		16-6	316
14	Saint Mary's		16-7	299
15	Liberty		18-6	291
16	Long Beach State		19-4	283
17	Albany		17-7	228
18	Akron		17-5	219
19	South Dakota State		16-7	211
20	Marist		16-7	181
21	UT-Martin		15-9	174
22	Wright State		18-5	119
23	Maine		17-6	111
24	Drake		15-7	109
25	South Dakota		19-5	101

OTHERS RECEIVING VOTES

Pacific 84, Arkansas State 51, Army 29, American 26, Hawaii 24, CSU Bakersfield 12, New Mexico State 12, Cal State Northridge 10, Hampton 10, Youngstown State 9, Ball State 8, Bucknell 8, Northern Iowa 8, Lehigh 6, Montana 6, Pennsylvania 6, Cornell 5, Robert Morris 5, Western Michigan 4, Central Connecticut 3, Central Michigan 3, Drexel 1, San Francisco 1

CAA WOMEN'S BASKETBALL WEEKLY REPORT • FEBRUARY 16, 2015

ACTIVE DOUBLE-DIGIT SCORING STREAKS

	(min. 5 gms)
Precious Hall, JMU	10 games
Rachel Pearson, Drexel	9 games
Ashunae Durant, Hofstra	7 games
Kelly Loftus, Hofstra	6 games
Bre Bolden, CofC	6 games

ACTIVE DOUBLE-DIGIT REBOUNDING STREAKS

	(min. 2 gms)
Bre Bolden, CofC	2 games
Ryan Flowers, UNCW	2 games

DOUBLE-DOUBLES

LaTorri Hines-Allen - TOW	12
Lauren Okafor - JMU	10
Ashunae Durant - HOF	7
Elo Edeferioka - HOF	6
Hannah Jardine - DEL	6
Bre Bolden - COFC	5
Samantha DeFreese - NU	5
Ryan Flowers - UNCW	5
Jazmen Boone - WM	4
Alex Masaquel - WM	4
Kelva Atkins - UNCW	3
Joy Caracciolo - DEL	3
A'lece Mark - NU	3
Angela Mickens - JMU	3
Francesca Sally - NU	3
Anjie White - HOF	3
Sam Coffey - ELON	2
Jamila Thompson - DREX	2
Alecia Bell - DEL	1
Shay Burnett - COFC	1
Meghan Creighton - DREX	1
Precious Hall - JMU	1
Christy Hewatt - COFC	1
Breonn Hughey - TOW	1
Malaya Johnson - ELON	1
Krystal Luciano - HOF	1
Jackie Luna-Castro - COFC	1
Amencie Mercier - NU	1
Amber Reeves - UNCW	1
Abby Rendle - WM	1
Jenifer Rhodes - COFC	1
Markell Smith - TOW	1
Naqaiyyah Teague - UNCW	1
Ciara Webb - TOW	1

STELLAR GAMES

10+ Rebound Game Leaders	(min. 2 gms)
LaTorri Hines-Allen - TOW	13
Lauren Okafor - JMU	12
Elo Edeferioka - HOF	11
Hannah Jardine - DEL	8
Ashunae Durant - HOF	8
Ryan Flowers UNCW	8
Bre Bolden - COFC	6
Jazmen Boone - WM	6
Joy Caracciolo - DEL	6
Samantha DeFreese - NU	5
Alex Masaquel - WM	5
Francesca Sally - NU	5
Naqaiyyah Teague - UNCW	5
Kelva Atkins - UNCW	3
Sam Coffey - ELON	3
A'lece Mark - NU	3
Makeda Nicholas - DEL	3
Jamila Thompson - DREX	3
Anjie White - HOF	3
Da'Lishia Griffin - JMU	2
Malaya Johnson, ELON	2
Jackie Luna-Castro - COFC	2
Amber Reeves - UNCW	2
Markell Smith - TOW	2

HOME SWEET HOME

Home courts have been defended well this season by all 10 CAA teams.

- Overall, CAA teams are 70-44 at home this season.
- In league play, the home teams are 37-28.
- James Madison is 11-0 at home this season and has won 21 straight games at the Convocation Center dating back December 29, 2013 (Ohio, W, 56-33). The Dukes have played in front of 2,000+ fans in 24 consecutive home outings, including 5,009 fans on January 18.
- Drexel is 8-3 at the Daskalakis Athletic Center.
- Nine of UNCW's 10 wins this season have come at home.
- Elon, under Head Coach **Charlotte Smith**, is 39-15 at Alumni Gym.

IT'S A STEAL

- There have been five games this season in which a single team has recorded 16+ steals. All four of those contests involved William & Mary.
- In their game on January 15, William & Mary and Drexel combined for 33 steals. The Tribe had a season-high 17 steals while the Dragons posted 16 steals.
- William & Mary also had 16 steals at Northeastern on February 1 while Drexel had 16 steals against William & Mary on February 6. William & Mary then posted 16 steals against College of Charleston on February 15.
- Three players have recorded seven steals in a single contest: JMU's **Angela Mickens** at Elon on January 15; Drexel's **Jamila Thompson** at William & Mary on January 15; and William & Mary's **Alexandra Masaquel** on February 6.
- College of Charleston's **Bre Bolden** has recorded at least one steal in 24 consecutive games. She has had multiple steals in 17 of her 22 games played. She's also had four games with 5+ steals.

HELPING THEM OUT

- William & Mary set a school record with 28 assists against Longwood on November 29 for the eighth-highest single game total in NCAA Division I at the time.
- Eight different CAA players have dished out 10+ assists this season.
- Hofstra's **Krystal Luciano** had 14 assists against Northeastern on January 6, tying her for the tenth most in CAA single game history.
- Drexel's **Meghan Creighton** posted 13 assists against Sacred Heart on December 7.
- James Madison's **Angela Mickens** handed out her 300th career assist as part of a 10 helper night at Northeastern on January 9. She had a career-high 13 assists against Pitt on November 23. She also had 10 assists at Vanderbilt on December 29, 11 against William & Mary on January 22, and 12 at Towson on February 12.
- College of Charleston guard **Shiclasia Brown** handed out 11 assists against UNC Greensboro on November 16.
- Drexel senior **Jamila Thompson** dished out 12 assists at William & Mary on January 15.
- Also with 10 assists: **Darius Faulk** (Hofstra) at NJIT; **Breonn Hughey** (Towson) versus George Mason and Drexel on February 15; **Amencie Mercier** (Northeastern) at Hofstra on January 6.

BLOCK PARTY

- Hofstra had 13 blocks against UNCW on January 18, tying the fifth most in CAA single game history.
- The Pride are one of three teams to have blocked 11+ shots in a single game this season. Towson had 11 at Loyola University Maryland on December 4. Three days later, Elon swatted away 11 shots at NC State.
- Forward **Anjie White** tied a CAA season high with seven blocks against UNCW on January 18.
- William & Mary rookie **Abby Rendle** swatted seven shots against Richmond on December 28.
- Individually, four players have blocked 100+ shots for their careers. College of Charleston's **Mikaela Hopkins** has 139 blocks while James Madison's **Lauren Okafor** has 138. They are followed by Elon's **Sam Coffey** (117) and JMU's **Jazmon Gwathmey** (112).

MAKE IT 1,000

- James Madison became the third team in NCAA Division I history to record 1,000 victories on January 6 with a 74-57 victory over UNCW at the JMU Convocation Center. The only two teams ahead of JMU in program wins are Tennessee and Louisiana Tech. Dukes senior **Toia Giggetts** also recorded her 1,000th career point against the Seahawks that night.
- Northeastern's **A'lece Mark** became the fifth player in the CAA this season to reach 1,000 career points, doing so against Towson on February 8.
- Towson's **LaTorri Hines-Allen** became the fourth player in the CAA this season to hit the 1,000 career point milestone. Hines-Allen has 1,115 points (876 points as a Tiger/239 points at Virginia Tech).
- James Madison's **Precious Hall** and **Toia Giggetts** and UNCW's **Kelva Atkins** reached the milestone earlier this year.

CAA WOMEN'S BASKETBALL WEEKLY REPORT • FEBRUARY 16, 2015

STELLAR GAMES

Individual 15-Rebound Games

19	Lauren Okafor, JMU	vs. Pitt (11/23)
18	LaTorri Hines-Allen, TOW	vs. UMBC (11/25)
18	Lauren Okafor, JMU	at Ohio (12/15)
18	Ryan Flowers, UNCW	at FAU (12/29)
17	Ashunae Durant, HOF	at Drexel (1/9)
16	Alex Masaquel, WM	vs. Loyola-Md. (11/14)
16	Lauren Okafor, JMU	vs. UCLA (11/14)
16	Lauren Okafor, JMU	at American (11/20)
16	Da'Lishia Griffin, JMU	vs. William & Mary (1/22)
15	Joy Caracciolo, DEL	at Lafayette (11/14)
15	Hannah Jardine, DEL	at Lafayette (11/14)
15	Elo Edeferioka, HOF	at Norfolk State (11/23)
15	Elo Edeferioka, HOF	vs. Robert Morris (12/6)
15	Lauren Okafor, JMU	at Davidson (12/7)
15	Christy Hewatt, COFC	at George Mason (11/23)
15	Ryan Flowers, UNCW	vs. Elon (1/22)
15	LaTorri Hines-Allen, TOW	vs. CofC (2/1)
15	Elo Edeferioka, HOF	vs. JMU (2/6)

20+ Point Game Leaders

Precious Hall - JMU	14
LaTorri Hines-Allen - TOW	11
Kelva Atkins - UNCW	6
Samantha DeFreese - NU	6
Bre Bolden - COFC	5
Erika Brown - DEL	5
Dominique Johnson - TOW	5
Marlena Tremba - WM	5
Kelly Loftus - HOF	4
Rachel Pearson - DREXEL	3
Sarah Curran - DREXEL	2
Ashunae Durant - HOF	2
Courtnei Green - DEL	2
A'lece Mark - NU	2
Brie Mobley - UNCW	2
Shay Burnett - ELON	1
Shatia Cole - ELON	1
Elo Edeferioka - HOF	1
Jazmon Gwathmey - JMU	1
Erin Hall - COFC	1
Hannah Jardine - DEL	1
Malaya Johnson - ELON	1
Amencie Mercier - NU	1
Tiffany Montagne - NU	1
Lauren Okafor - JMU	1
Ashley Perez - JMU	1
Jenifer Rhodes - ELON	1
Zora Stephenson - Elon	1
Naqaiyyah Teague - UNCW	1
Ciara Webb - TOW	1

Individual 40-Point Games

40	Kelva Atkins, UNCW	v. Charleston South. (12/20)
----	--------------------	------------------------------

Individual 30-Point Games

37	Kelva Atkins, UNCW	at FAU (12/29)
34	Precious Hall, JMU	vs. Pitt (11/23)
32	Dominique Johnson, TOW	at Penn State (11/14)
31	LaTorri Hines-Allen, TOW	at JMU (1/4)
31	Erika Brown, DEL	at Hofstra (2/1)
30	Courtnei Green, DEL	at Vermont (11/29)
30	Precious Hall, JMU	vs. Hampton (12/20)
30	Kelly Loftus, HOF	vs. JMU (2/6)
30	Kelva Atkins, UNCW	vs. CofC (2/15)

Individual 25-Point Games

29	Kelva Atkins, UNCW	vs. Campbell (11/19)
29	Precious Hall, JMU	vs. Maryland (11/28)
29	LaTorri Hines-Allen, TOW	vs. LaSalle (11/29)
29	Bre Bolden, COFC	at Elon (1/11)
28	A'lece Mark, NU	vs. North Dakota St. (11/28)
28	Dominique Johnson, TOW	vs. JMU (2/6)
27	Precious Hall, JMU	vs. Richmond (12/3)
27	Zora Stephenson, ELON	vs. CofC (1/11)
27	Ciara Webb, TOW	vs. Northeastern (1/22)
27	Hannah Jardine, DEL	vs. UNCW (2/8)
27	Dominique Johnson, TOW	at Northeastern (2/8)
26	Samantha DeFreese, NU	at Elon (1/25)
25	Precious Hall, JMU	vs. UCLA (11/14)
25	Sarah Curran, DREXEL	vs. St. Joseph's (11/25)
25	Kelly Loftus, HOF	at Albany (12/2)
25	Rachel Pearson, DREXEL	vs. Miami (Ohio) (12/28)
25	Precious Hall, JMU	vs. UNCW (1/6)
25	Precious Hall, JMU	vs. William & Mary (1/22)
25	Shatia Cole, UNCW	vs. Towson (1/25)

NON-CONFERENCE NOTES

The CAA went a combined 53-57 (.467) against non-conference opponents this season.

- Five teams finished their non-conference slate with a record of .500 or better.
- As a conference, the CAA went 7-2 against Patriot League teams and had a 6-2 mark against Big South teams.
- The CAA picked up a pairs of wins over both the ACC and American Athletic Conference.
- Home courts were defended well by CAA squads with a combined 33-15 record.

THE 40-CLUB

UNCW guard **Kelva Atkins** scored 40 points against Charleston Southern on December 20, tying a school record and setting a Trask Coliseum scoring record.

- The 40 points are tied for the tenth most in CAA single game history and it was the 18th 40-point game in conference history.
- Atkins is the first CAA player to score 40 points since Elena Delle Donne had 42 against Hofstra on February 16, 2012.
- It was the seventh 40-point game in NCAA Division I at the time.
- It is only the second 40-point game by any UNCW player (men's or women's) in UNCW history.

USBWA NATIONAL FRESHMAN OF THE WEEK - 1/13

In addition to her CAA Rookie of the Week honor, Hofstra guard **Ashunae Durant** was selected as the National Freshman of the Week by the USBWA. Durant averaged a double-double with 13.0 points and 10.7 rebounds to help the Pride to a 3-0 week. The stretch included a 21-point, 17-rebound effort in the win at Drexel.

WELCOME ELON

The Colonial Athletic Association welcomes new member Elon University for the 2014-15 season behind fourth-year Head Coach **Charlotte Smith**.

- The Phoenix picked up 15 wins, including 10 victories in the SoCon, last year. Elon returns four of its five starters from one year ago, including second-leading scorer **Zora Stephenson** and SoCon Freshman of the Year **Jenifer Rhodes**.
- Senior forward **Sam Coffey** and sophomore guard **Lauren Brown**, who was named to the SoCon All-Rookie squad, are also back adding to the solid mix of veterans and experienced youth.

WELCOME COACHES

The CAA is proud to introduce two new head coaches to the league.

- Northeastern is led by **Kelly Cole**, the former Boston College and Harvard assistant who brings more than 20 years of coaching experience with her. She made 11 trips to the postseason, eight of those to the NCAA Tournament.
- At the College of Charleston, **Candice M. Jackson** is in her first season as a collegiate head coach after spending the past three seasons as an assistant coach and recruiting coordinator at Duke University.

TOP HONOREES RETURN

Six All-CAA honorees return for the 2014-15 campaign, including CAA Rookie of the Year **Marlena Tremba** of William & Mary.

- All-CAA Second Team members **Precious Hall** and **Toia Giggetts**, both of JMU, return along with Towson's **LaTorri Hines-Allen**, and UNCW's **Kelva Atkins**.
- All-CAA Third Teamers Northeastern's **A'lece Mark** and Drexel's **Rachel Pearson** are back.

TOP SCORERS RETURN

Twelve of the top-20 scorers from a year ago return for the 2014-15 campaign.

- That group is headlined by James Madison's **Precious Hall** (15.4 ppg) and **Toia Giggetts** (14.1 ppg) and William & Mary's **Marlena Tremba** (13.8 ppg).

YOUTH MOVEMENT

There's a bit of a youth movement in the CAA this year as 55.8 percent of the 145 women's basketball players are underclassmen. The rookie class has 42 members, including 36 true rookies, while there is a 38-member sophomore class with four redshirts.

CAA PRESEASON HONORS

- James Madison University junior **Precious Hall** was selected as the CAA Preseason Player of the Year and was joined on the Preseason All-CAA First Team by JMU teammate **Toia Giggetts**. Also earning first-team honors were: Towson's **LaTorri Hines-Allen** (14.1 ppg/8.4 rpg), Northeastern's **A'lece Mark** (15.0 ppg/4.0 rpg), and UNCW's **Kelva Atkins** (15.8 ppg/5.5 rpg).
- Voted to the Preseason All-CAA Second Team were: JMU's **Jazmon Gwathmey**, Delaware's **Courtnei Green**, Drexel's **Rachel Pearson**, College of Charleston's **Mikaela Hopkins** (8.6 ppg/2.3 rpg), and William & Mary's **Marlena Tremba** (13.2 ppg/2.1 rpg).
- Receiving an honorable mention were: Delaware's **Joy Caracciolo**, Hofstra's **Elo Edeferioka**, Towson's **Dominique Johnson**, and UNCW's **Brie Mobley**.
- James Madison was picked to repeat as champions while Delaware, Drexel, Hofstra, and Towson rounded out the top five teams in the league.

CAA WOMEN'S BASKETBALL WEEKLY REPORT • FEBRUARY 16, 2015

CAA IN THE PRESEASON WNIT

Towson took part in the 2014 Preseason WNIT.

- In opening round action, the Tigers suffered a tough 71-64 loss at Penn State.
- Towson played host to a consolation pod at SECU Arena. The Tigers topped Rider, 53-51, on November 21 before falling to North Dakota, 54-52, the following day to conclude play.
- It was the first time the Tigers took part in the event since the 2009 campaign. During that campaign Towson fell to West Virginia, but posted victories over Winthrop (56-46) and North Carolina A&T (74-49).
- The last time a CAA squad took part in the Preseason WNIT was in 2012 when Delaware participated. The Blue Hens won their opening round game over Sam Houston State (63-31) before falling to Georgetown and Duquesne.
- Since 1997, CAA teams are 11-14 in Preseason WNIT action.

THANKSGIVING TOURNAMENT TIME

Six CAA squads played in tournaments over the Thanksgiving holiday.

- **James Madison** split games at the San Juan Shootout. In the opener, the Dukes fell to undefeated No. 10/8 Maryland, 80-64. They rebounded with a 84-60 victory over Houston in their finale.
- **Hofstra** advanced to the championship game of the Hofstra Thanksgiving Tournament but fell to (RV) Western Kentucky, 70-65, in overtime. In the opening game, the Pride posted a 61-58 overtime victory over Northern Iowa.
- **College of Charleston** faced some tough competition at the Gulf Coast Showcase, falling to No. 3 UConn, (RV) Minnesota, and Villanova.
- **UNCW** hosted the UNCW Hampton Inn Thanksgiving Classic at Trask Coliseum. In the opener, the Seahawks could not stop a late run by North Florida, falling 55-41. In the second game, UNCW fell to Western Carolina, 64-53.
- **Northeastern** battled at the FAU Thanksgiving Classic. In the opener, the Huskies were clipped by North Dakota State, 79-72. In the second game, Northeastern fell at host FAU, 81-74.
- **Towson** came up against two feisty opponents at the LIU Brooklyn Turkey Classic. The Tigers fell to Rhode Island, 60-49, on the opening day and suffered a 62-49 loss to La Salle in the finale.

TIP-OFF TIME

The CAA had a good showing during the opening weekend of play, going a combined 9-5.

- Eight of the 10 CAA squads got the 2014-15 campaign started on November 14
- Eight of the 10 teams opened action on their home courts and went a combined 6-2.
- There were two overtime contests which resulted in a win by JMU and a loss by Hofstra.
- Northeastern posted the first win of the season by clipping Boston University, 75-74, in the Cabot Center. It was also the first collegiate victory for Head Coach **Kelly Cole**.
- James Madison rallied from behind to upset No. 23 UCLA, 91-87, in overtime at the JMU Convocation Center.
- Elon picked up its first win as a member of the CAA by topping Anderson, 77-72.
- Ten double-doubles were registered by 10 different players during the opening weekend.
- During opening weekend, CAA teams out-scored opponents by a margin of 5.8 points per game (69.9/64.1) and out-rebounded opponents by 11.1 boards per game (43.4/32.3).

NCAA STATISTICAL RANKINGS (thru games on 2/15)

NCAA TEAM RANKINGS (Top 50)

Category	Player	Rank	Actual
Scoring Offense	James Madison	24	76.1
Scoring Defense	Drexel	31	56.4
	Hofstra	49	58.2
Scoring Margin	James Madison	14	16.0
Field-Goal Percentage Defense	James Madison	32	36.2
	Hofstra	44	36.5
	Drexel	1	78.9
Free-Throw Percentage	James Madison	11	10.5
Rebound Margin	Elon	48	7.0
Three-Point Field Goals Per Game	Delaware	18	36.8
Three-Point Field-Goal Percentage	James Madison	28	36.1
Won-Lost Percentage	James Madison	8	91.7
Assists Per Game	James Madison	39	15.7
Blocked Shots Per Game	William & Mary	42	4.8
	Elon	48	4.7
Steals Per Game	William & Mary	13	11.5
Turnovers Per Game	Towson	33	13.6
Assist Turnover Ratio	James Madison	48	1.07
Turnover Margin	Drexel	47	3.63
Offensive Rebounds per Game	James Madison	17	17.0
Defensive Rebounds per Game	James Madison	28	29.0

NCAA INDIVIDUAL RANKINGS (Top 50)

Category	Team	Rank	Actual
Points Per Game	Precious Hall, James Madison	22	20.6
Rebounds Per Game	Lauren Okafor, James Madison	40	10.0
	Latorri Hines-Allen, Towson	49	9.6
Assists Per Game	Angela Mickens, James Madison	3	7.8
	Breonn Hughey, Towson	37	5.0
	Darius Faulk, Hofstra	45	4.9
Blocked Shots Per Game	Abby Rendle, William & Mary	44	2.25
Steals Per Game	Breanna Bolden, Col. of Charleston	12	3.17
	Jazmen Boone, William & Mary	38	2.56
Field-Goal Percentage	Lauren Okafor, James Madison	13	56.1
	Samantha DeFreese, Northeastern	44	51.0
	Rachel Pearson, Drexel	41	40.4
Three-Point Field-Goal Percentage	Precious Hall, James Madison	3	3.29
Three-Point Field Goals Per Game	Zora Stephenson, Elon	25	2.79
	Kelly Loftus, Hofstra	35	2.71
	Rachel Pearson, Drexel	40	2.63
Assist Turnover Ratio	Angela Mickens, James Madison	9	2.78
	Breonn Hughey, Towson	46	2.03
Double Doubles	Latorri Hines-Allen, Towson	22	12.0
	Lauren Okafor, James Madison	37	10.0
Offensive Rebounds per Game	Lauren Okafor, James Madison	13	4.0
	Ashunae Durant, Hofstra	28	4.0

CAA WOMEN'S BASKETBALL WEEKLY REPORT • FEBRUARY 16, 2015

CAA ACTIVE CAREER LEADERS *

SCORING (600+)

Precious Hall, James Madison	1316 [^]
Kelva Atkins, UNCW	1257 [^]
LaTorri Hines-Allen, Towson	1115 [^]
Toia Giggetts, James Madison	1097 [^]
A'lece Mark, Northeastern	1017 [^]
Zora Stephenson, Elon	868
Dominique Johnson, Towson	853
Jazmen Boone, William & Mary	841
Sam Coffey, Elon	815
Jazmon Gwathmey, James Madison	766
Shatia Cole, UNCW	750
Rachel Pearson, Drexel	735
Courtney Green, Delaware	733
Kyla Kerstetter, William & Mary	732
Lauren Okafor, James Madison	726
Marlena Tremba, William & Mary	704
Amencie Mercier, Northeastern	662
Samantha DeFreese, Northeastern	651
Joy Caracciolo, Delaware	635

Brie Mobley, UNCW	592
Bre Bolden, CoFC	575

[^]15th, 19th, 30th, 38th, 52nd respectively, among NCAA DI Active Career Leaders

REBOUNDING (400+)

LaTorri Hines-Allen, Towson	754
Toia Giggetts, James Madison	731
Lauren Okafor, James Madison	678
Sam Coffey, Elon	624
Jazmon Gwathmey, James Madison	481
Michaela Hopkins, CoFC	450
Markell Smith, Towson	451
Elo Edeferioka, Hofstra	440
Joy Caracciolo, Delaware	437
Kelva Atkins, UNCW	430
Samantha DeFreese, Northeastern	424

ASSISTS (150+)

Angela Mickens, James Madison	378
Amencie Mercier, Northeastern	337
Kelva Atkins, UNCW	267
A'lece Mark, Northeastern	261
Meghan Creighton, Drexel	253
Dominique Johnson, Towson	250
Jazmen Boone, William & Mary	235
Krystal Luciano, Hofstra	201
Precious Hall, James Madison	187
Sam Coffey, Elon	177
Darius Faulk, Hofstra	155

Shatia Cole, UNCW	142
Courtney Green, Delaware	132
Essence Baucom, Elon	130
Asia Jackson, Hofstra	125

STEALS (100+)

Jazmen Boone, William & Mary	207
Kelva Atkins, UNCW	154
A'lece Mark, Northeastern	143
Amencie Mercier, Northeastern	140
Kyla Kerstetter, William & Mary	137
Shatia Cole, UNCW	131
Bre Bolden, CoFC	130
Precious Hall, James Madison	122
Angela Mickens, James Madison	117
Asia Jackson, Hofstra	100
Ciara Webb, Towson	100
Dominique Johnson, Towson	100

BLOCKS (100+)

Mikaela Hopkins, CoFC	139
Lauren Okafor, James Madison	138
Sam Coffey, Elon	117
Jazmon Gwathmey, James Madison	112

FIELD GOALS MADE (200+)

Kelva Atkins, UNCW	452
LaTorri Hines-Allen, Towson	447
Precious Hall, James Madison	445
Toia Giggetts, James Madison	437
A'lece Mark, Northeastern	345
Zora Stephenson, Elon	299
Jazmen Boone, William & Mary	291
Jazmon Gwathmey, James Madison	290
Sam Coffey, Elon	289
Dominique Johnson, Towson	288
Lauren Okafor, James Madison	280
Shatia Cole, UNCW	276
Kyla Kerstetter, William & Mary	262
Rachel Pearson, Drexel	258
Samantha DeFreese, Northeastern	252
Brie Mobley, UNCW	251
Joy Caracciolo, Delaware	249
Amencie Mercier, Northeastern	232
Bre Bolden, CoFC	232
Courtney Green, Delaware	227
Sarah Curran, Drexel	214
Marlena Tremba, William & Mary	214
Mikaela Hopkins, CoFC	207
Erin Hall, CoFC	204

3-PT FIELD GOALS MADE (100+)

Zora Stephenson, Elon	213
Precious Hall, James Madison	179
Rachel Pearson, Drexel	171
Dominique Johnson, Towson	144
A'lece Mark, Northeastern	127
Marlena Tremba, William & Mary	123
Meghan Creighton, Drexel	121
Erin Hall, CoFC	121
Courtney Green, Delaware	117

Amencie Mercier	96
Sam Coffey, Elon	95

GAMES PLAYED (100+)

Toia Giggetts, James Madison	128 [^]
Sam Coffey, Elon	115
Lauren Okafor, James Madison	114
Amencie Mercier, Northeastern	113
Zora Stephenson, Elon	113
Jazmen Boone, William & Mary	109
Kyla Kerstetter, William & Mary	109
LaTorri Hines-Allen, Towson	108
Christy Hewatt, CoFC	106
Erin Hall, CoFC	104
A'lece Mark, Northeastern	101
Camille Alberson, Towson	101
Mikaela Hopkins, CoFC	100

[^]12th among NCAA Division I Active Career Leaders

*transfers are included among the active career leaders. The totals span an entire career at any NCAA Division I institution

SINGLE GAME RECORDS

POINTS SCORED GAME

PLAYER	POINTS	OPPONENT	DATE
1. 54 Elena Delle Donne, Delaware	54	vs. JMU	2/18/10
2. 51 Keri Chaconas, Mason	51	vs. East Carolina	2/17/95
3. 47 Gabriela Marginean, Drexel	47	vs. Northeastern	2/22/07
4. 42 Elena Delle Donne, Delaware	42	vs. Hofstra	2/16/12
42 Dawn Evans, JMU	42	vs. Virginia	12/20/10
42 Justine Allpress, ECU	42	vs. Hampton	12/30/96
6. 41 Elena Delle Donne, Delaware	41	vs. Hofstra	1/26/12
41 Elena Delle Donne, Delaware	41	vs. Yale	11/20/10
41 Gabriela Marginean, Drexel	41	vs. Northeastern	1/28/10
41 Laura Kooij, Mason	41	vs. Chattanooga	11/24/01
41 Veronica Gillard, Mason	41	vs. Delaware St.	11/29/86
10.40 Kelva Atkins, UNCW	40	vs. Charleston Southern	12/20/14
40 Elena Delle Donne, Delaware	40	vs. Mason	1/8/12
40 Courtney Hurt, VCU	40	vs. UMKC	11/19/11
40 Elena Delle Donne, Delaware	40	vs. Penn State	11/17/11
40 Gabriela Marginean, Drexel	40	vs. Old Dominion	2/12/09
40 Jen Derevanik, Mason	40	vs. VCU	3/12/04
40 Tressa Reese, UNCW	40	vs. Charleston So.	2/13/91

ASSISTS GAME

PLAYER	ASSISTS	OPPONENT	DATE
1. 20 Gaynor O'Donnell, ECU	20	vs. UNC Asheville	12/13/92
2. 17 Jess Cichowicz, JMU	17	vs. Gardner-Webb	11/16/01
3. 16 Jamie Conroy, NU	16	vs. W&M	1/30/12
16 Jen Sobota, W&M	16	vs. Davidson	12/10/00
16 Courtney Kaup, Mason	16	vs. VCU	2/20/00
16 Ticha Penicheiro, ODU	16	vs. UNCW	2/17/98
16 Johnnie Smith, UNCW	16	vs. ETSU	1/13/88
7. 15 Ticha Penicheiro, ODU	15	vs. St. Francis	3/13/98
15 Ticha Penicheiro, ODU	15	vs. William & Mary	2/20/98
15 Gaynor O'Donnell, ECU	15	vs. UNCW	3/7/93
10.14 Krystal Luciano, Hofstra	14	vs. Northeastern	1/6/15
14 Candice Bellocchio, Hofstra	14	vs. St. Francis-PA	11/18/09
14 Andrea Benvenuto, JMU	14	vs. VCU	2/8/07
14 Katie Averyt, W&M	14	vs. Hampton	12/20/95
14 Gaynor O'Donnell, ECU	14	vs. NC A&T	2/17/93

THREE-POINT FIELD GOALS ATTEMPTED GAME

PLAYER	ATTEMPTS	OPPONENT	DATE
1. 22 TJ Jordan, ODU	22	vs. Northeastern	2/8/07
2. 19 Janine Aldridge, W&M	19	vs. Northeastern	1/30/12
19 Dawn Evans, JMU	19	vs. Delaware	2/18/10
19 Dawn Evans, JMU	19	vs. Towson	1/14/10
5. 18 Dawn Evans, JMU	18	vs. Hampton	11/12/10
18 Dawn Evans, JMU	18	vs. Kentucky	3/26/08
18 Julie Jones, UR	18	vs. Old Dominion	2/14/90
8. 17 Kelly Loftus, Hofstra	17	vs. Northeastern	1/6/15
17 Kirby Buckholder, JMU	17	vs. Northeastern	2/19/12
17 Dawn Evans, JMU	17	vs. Middle Tennessee	12/12/10
17 TJ Jordan, ODU	17	vs. Virginia	11/12/06

THREE-POINT FIELD GOALS MADE GAME

TEAM	MADE	OPPONENT	DATE
1. 18 Drexel	18	vs. Northeastern	2/17/06
2. 17 Richmond	17	vs. American	1/28/00
3. 15 Elon at Towson	15		2/5/14
15 William & Mary	15	vs. Howard	12/9/07
15 Drexel at William & Mary	15		1/23/04
6. 14 Northeastern	14	vs. Syracuse	11/12/10
14 Hofstra at UNCW	14		2/7/08
14 Drexel at Mount St. Mary's	14		1/3/08

CAA WOMEN'S BASKETBALL WEEKLY REPORT • FEBRUARY 16, 2015

MEDIA SERVICES

CAA RELEASE

The CAA women's basketball release is updated following each day that games are play. CAA standings, team-by-team results, notes, and any statistics will be updated as often as needed based upon the schedule of play. The release will be available via CAASports.com. For more information, please contact Kelly McCarthy at kmccarthy@caasports.com.

CAA WEEKLY AWARDS

The CAA names a Player of the Week and a Rookie of the Week each Monday morning during the season. Winners are chosen from the nominations provided by the conference sports information directors. The information will be available from the CAA office via release, social media, and on the official league website.

CAASPORTS.COM

The official website of the Colonial Athletic Association. Visit CAA Basketball Media Central for all of your team info research and check out CAA Basketball Game Day for all your immediate links to live stats, live audio, webstreaming, and final results and recaps.

CAASTATS.COM

CAASTats.com is the on-the-go source for CAA scores throughout the regular and postseason. Accessible from any internet connected device, CAAStats.com will include live stat information for every "statistic-centric" home competition.

CAA.TV

CAA.TV, the league's free digital portal, can be accessed from any internet connected device and gives fans access to nearly every live event being contested across the conference. CAA.TV also features rich live stat functionality for nearly every game in the CAA, as well as social media integration which will allow fans to be connected across the conference while watching all the action. Games may be subject to online blackout.

CAA ON THE AIRWAVES

The CAA's newest television partner, the American Sports Network, will televise five women's contests on affiliate stations throughout the nation. ASN is a programming initiative of Sinclair Networks Group, which plans to produce over 211 college sports games during the 2014-2015 academic year featuring six NCAA Division I conferences. Sinclair Broadcast Group includes 164 television stations and affiliations with all the major networks and reaches approximately 38.2 percent of U.S. television households. Comcast SportsNet will once again televise the semifinals and finals of the CAA Women's Basketball Championship. Comcast Sports Group consists of 11 regional networks that deliver 2,400 sporting events annually to more than 43 million homes.

CAA SOCIAL

There are a variety of ways fans and media can interact with the CAA.

Twitter.com/CAABasketball

Discover what is happening right now. Tag your CAA twitter news with **#CAAHoops**

CAAWomensHoops.wordpress.com

The Official CAA Women's Hoops Blog gives you an inside look. **#BaselineBuzz**

CAASports.wordpress.com

The Official CAA Sports Blog.

Facebook.com/CAASports

Keep up with all CAA releases and videos right on your home page.

YouTube.com/CAASportsProductions

Watch highlights, recaps, promos, and more.

Instagram/CAASports

Tag your photos with **#caasports**

WEEKLY TELECONFERENCE

The CAA weekly telephonic press conferences for basketball are held each Monday at 11 a.m. through the regular season. A select number of coaches are available for 15-20 minutes to discuss their teams and the league in general. All conference calls are archived on CAASports.com.

- Jan. 12 – Tina Martin (Delaware)
Denise Dillon (Drexel)
Kenny Brooks (James Madison)
- Jan. 19 – Kelly Cole (Northeastern)
Charlotte Smith (Elon)
Krista Kilburn-Steveskey (Hofstra)
- Jan. 26 – Adell Harris (UNCW)
Niki Reid Geckeler (Towson)
- Feb. 2 – Ed Swanson (William & Mary)
Denise Dillon (Drexel)
Krista Kilburn-Steveskey (Hofstra)
- Feb. 9 – Tina Martin (Delaware)
Kenny Brooks (James Madison)
Candice M. Jackson (CofC)
- Feb. 16 – Ed Swanson (William & Mary)
Charlotte Smith (Elon)
- Feb. 23 – Adell Harris (UNCW)
Niki Reid Geckeler (Towson)
Kelly Cole (Northeastern)
- Mar. 9 – Coaches of Top 4 Seeds

CAA WOMEN'S BASKETBALL CONTACT INFORMATION

	Contact	Phone	Email	The CAA on Twitter		
CAA	Kelly McCarthy	804-525-1430	kmccarthy@caasports.com	@CAASports	@CAABasketball	#CAAHoops
CofC	Ryan Madden	843-953-5464	maddenrm@cofc.edu	@CofCAthletics	@CofCWBasketball	#CofC
Delaware	Maggie Hayon	302-831-6389	mhayon@udel.edu	@UDBluehens	@UDCoachMartin	#BlueHens
Drexel	Sam Angell	215-895-6895	sea65@drexel.edu	@DrexelDragons	@DrexelDragonsWB	@DeniseDillon #DUWBB
Elon	Paige Fredrickson	336-278-6761	pfredrickson@elon.edu	@ElonPhoenix	@ElonWBBasketball	#Elon
Hofstra	Brian Bohl	516-463-6759	brian.bohl@hofstra.edu	@HofstraPride	@HofstraWBB	@CoachKSteveskey #HofWBB
JMU	Devon Howard	540-568-3701	howardbd@jmu.edu	@JMUSports	@JMUWBBasketball	@CoachBrooksJMU #JMUDukes
UNCW	Eric Rhew	910-962-3252	rhewe@uncw.edu	@UNCWAthletics	@UNCWwomenshoops	@HC_AdellHarris #WingsUp
NU	Mike Renahan	617-373-2691	m.renahan@neu.edu	@GoNUAthletics	@GoNUwbbasketball	#GoNU
Towson	Megan O'Brien	410-704-4972	mobrien@towson.edu	@TowsonTigers	@Towson_WBB	#Towson
W&M	Andrew Phillips	757-221-3344	atphillips01@wm.edu	@TribeAthletics	@TribeWBB	#RisingTribe

CAA WOMEN'S BASKETBALL WEEKLY REPORT • FEBRUARY 16, 2015

CAA vs. Non-Conference Opponents

CAA vs. All Non-Conference	53-57
CAA vs. ACC	2-7
CAA vs. American	2-5
CAA vs. America East	4-3
CAA vs. A-10	6-11
CAA vs. Atlantic Sun	1-4
CAA vs. Big 12	0-0
CAA vs. Big East	0-1
CAA vs. Big Sky	0-1
CAA vs. Big South	6-2
CAA vs. Big Ten	0-5
CAA vs. Big West	0-0
CAA vs. C-USA	1-4
CAA vs. Horizon League	0-0
CAA vs. Ivy League	2-3
CAA vs. MAAC	5-1
CAA vs. MAC	2-0
CAA vs. MEAC	3-1
CAA vs. Missouri Valley	1-0
CAA vs. Mountain West	0-0
CAA vs. NEC	2-1
CAA vs. Ohio Valley	0-0
CAA vs. Pac-12	1-0
CAA vs. Patriot League	7-2
CAA vs. SEC	0-2
CAA vs. Southern	4-2
CAA vs. Southland	0-0
CAA vs. Summit	0-1
CAA vs. Sun Belt	0-1
CAA vs. SWAC	0-0
CAA vs. West Coast	0-0
CAA vs. WAC	0-0
CAA vs. Independent	1-0
CAA vs. Other	3-0

Referring to Us?

Great! We'd appreciate if you would use the proper references listed below.

CAA	Colonial Athletic Association/CAA
College of Charleston	CofC/Cougars
University of Delaware	Delaware/UD/Blue Hens
Drexel University	Drexel/Dragons
Elon University	Elon/Phoenix
Hofstra University	Hofstra/Pride
James Madison University	James Madison/ JMU/Dukes
University of North Carolina Wilmington	UNCW/Seahawks
Northeastern University	Northeastern/Huskies
Towson University	Towson/Tigers
The College of William & Mary	William & Mary/ W&M/Tribe

COLLEGE OF CHARLESTON

4-20 Overall/2-11 CAA



- Head Coach **Candice M. Jackson** got her first CAA win victory on January 6 as the Cougars topped Delaware, 55-49.
- Guard **Bre Bolden** has tallied six steals in a single game twice this season, is in the top-15 nationally in steals per game, and has at least one steal in 25 straight games.
- The Cougars played just three home games between November and December. The first contest came on November 16 against UNC Greensboro. CofC did not return home again until December 21. CofC then hosted USC Upstate on December 30.
- The Cougars gave Head Coach **Candice M. Jackson** her first collegiate coaching victory on December 21 by defeating Mercer, 72-59. Jackson is in her first season at the helm. The former Duke University assistant was named the Cougars head coach in April.
- Guard **Shiclasia Brown** dished out 11 assists against UNC Greensboro.
- Forward **Mikaela Hopkins** earned Preseason All-CAA Second Team honors.
- The Cougars took part in the Gulf Coast Showcase at the end of November, facing UConn, Minnesota, and Villanova.

COLL. OF CHARLESTON (4-20; 2-11 CAA)

N 14	at Kennesaw State	W	L, 61-68
N 16	UNC GREENSBORO	L	L, 68-70
N 19	at East Carolina	L	L, 55-68
N 23	at George Mason	L	L, 61-71
N 28	vs. #3/3 UConn	W	L, 24-85
N 29	vs. #RV Minnesota	\$	L, 50-74
N 30	vs. Villanova	\$	L, 41-60
D 14	at South Florida	L	L, 47-67
D 21	MERCER	W	W, 72-59
D 28	at South Carolina State	L	L, 51-60
D 30	USC UPSTATE	W	W, 61-60
J 04	*at Hofstra	L	L, 53-78
J 06	*DELAWARE	W	W, 55-49
J 09	*at UNCW	L	L, 57-69
J 11	*at Elon	L	L, 68-77
J 16	*TOWSON	L	L, 52-56
J 18	*NORTHEASTERN	W	W, 59-38
J 22	*at Delaware	L	L, 49-80
J 25	*JAMES MADISON	L	L, 53-73
J 30	*at Drexel	L	L, 47-64
F 01	*at Towson	L	L, 49-71
F 08	*ELON	L	L, 71-75
F 13	*HOFSTRA	L	L, 57-69
F 15	*at William & Mary	L	L, 59-74
F 19	*DREXEL	7:00 p.m.	
F 22	*at Northeastern	2:00 p.m.	
F 26	*WILLIAM & MARY	7:00 p.m.	
M 01	*UNCW	1:00 p.m.	
M 04	*at James Madison	7:00 p.m.	

* - CAA game \$ - Gulf Coast Showcase

DELAWARE

13-12 Overall/8-6 CAA



- Forward **Hannah Jardine** has scored in double digits in 15 of the last 19 games.
- Guard **Erika Brown** has posted double figures in nine of her last 11 games, including a 31-point effort at Hofstra.
- At least two Blue Hens have scored in double figures in each game this season.
- Five players scored against College of Charleston on January 22, the first time that happened since the 2005 CAA Tournament.
- The Blue Hens were held to 11 points in the second half against William & Mary on January 18, the first time since the 2009-10 season.
- Delaware opened CAA play with an 0-3 record for the first time in program history.
- Including this season, Delaware is 11-3 all-time in CAA openers.
- The Blue Hens recorded their 700th program victory on December 3 with a 69-58 win at Temple.
- Guard **Alecia Bell** suffered a leg injury and had to be carted off the court against Marist. She had surgery to repair two broken bones in her leg and will miss the remainder of the year.
- The Blue Hens return four of their five starts from last season, including junior guard **Courtni Green** was named to the Preseason All-CAA Second Team.

DELAWARE (13-12; 8-6 CAA)

N 14	at Lafayette	L	L, 52-63
N 16	MARIST	W	W, 70-60
N 21	at East Carolina	L	L, 60-89
N 25	FORDHAM	L	L, 44-49
N 29	at Vermont	W	W, 68-46
D 03	at Temple	W	W, 69-58
D 07	BUCKNELL	W	W, 58-56
D 16	#RV PRINCETON	L	L, 59-87
D 19	vs. Northern Kentucky#	L	L, 58-63
D 20	at Cincinnati	L	L, 59-67
D 29	RIDER	W	W, 68-53
J 04	*ELON	L	L, 50-60
J 06	*at College of Charleston	L	L, 49-55
J 09	*at Towson	L	L, 49-56
J 11	*at Northeastern	W	W, 54-48
J 15	*HOFSTRA	W	W, 64-53
J 18	*WILLIAM & MARY	L	L, 48-50
J 22	*COLLEGE OF CHARLESTON	W	W, 80-49
J 25	*at Drexel	L	L, 56-61
J 29	*TOWSON	W	W, 72-54
F 01	*at Hofstra*	W	W, 73-62
F 05	*NORTHEASTERN	W	W, 70-61
F 08	*UNCW	W	W, 69-60
F 13	*at William & Mary	W	W, 61-56
F 15	*at James Madison	W	L, 64-94
F 22	*DREXEL	2:00 p.m.	
F 26	*at UNCW	7:00 p.m.	
M 01	*JAMES MADISON	2:00 p.m.	
M 04	*at Elon	7:00 p.m.	

*CAA game # - Game played in Cincinnati

CAA WOMEN'S BASKETBALL WEEKLY REPORT • FEBRUARY 16, 2015

DREXEL 15-9 Overall/9-4 CAA



- Drexel won eight of its first 10 league games for the fifth time in program history and the third time since joining the CAA.
- The Dragons are 8-3 at the DAC, two of those losses coming in overtime affairs (Hofstra 1/9; William & Mary 2/6 in 2OT).
- With the win over Northeastern to begin CAA play, Drexel has been victorious in each of its last four conference openers.
- Head Coach **Denise Dillon** posted the 200th victory of her career in the 71-54 win over Miami (Ohio) on December 28.
- Junior **Meghan Creighton**, who started 76 games over the last three seasons, is out indefinitely after suffering a knee injury which required surgery in mid-December.
- Junior **Rachel Pearson** was named to the Cavalier Classic All-Tournament Team, the Brown Classic All-Tournament Team, and to the Preseason All-CAA Second Team.
- The Dragons have two tournaments which book-end December with the Brown Bear Classic and the Holiday Inn University Area Cavalier Classic at the University of Virginia.
- Drexel had four Ivy League teams on its slate in Cornell, Princeton, Brown, and Penn.

DREXEL (15-9; 9-4 CAA)

N 16	CORNELL	W, 62-53
N 19	at Princeton	L, 43-59
N 22	COLGATE	W, 59-51
N 25	SAINT JOSEPH'S	W, 76-63
D 06	vs. St. Bonaventure#	L, 32-43
D 07	vs. Sacred Heart#	W, 61-54
D 14	at Pittsburgh	L, 53-72
D 17	at Quinnipiac	L, 50-74
D 20	PENN	W, 67-58
D 28	vs. Miami (Ohio)\$	W, 71-54
D 29	at Virginia\$	L, 66-72
J 04	*NORTHEASTERN	W, 58-35
J 06	*at Elon	W, 57-47
J 09	*HOFSTRA	L, 52-53 (OT)
J 11	*UNCW	W, 58-53
J 16	*at William & Mary	W, 49-46
J 18	*at James Madison	L, 51-66
J 22	*at Hofstra	W, 63-56
J 25	*DELAWARE	W, 61-56
J 30	*COLLEGE OF CHARLESTON	W, 64-47
F 01	*at UNCW	W, 61-44
F 06	*WILLIAM & MARY	L, 68-72 (2OT)
F 08	*JAMES MADISON	L, 54-73
F 15	*at Towson	W, 66-52
F 19	*at College of Charleston	7:00 p.m.
F 22	*at Delaware	2:00 p.m.
F 27	*ELON	7:00 p.m.
M 01	*TOWSON	3:00 p.m.
M 04	*at Northeastern	7:00 p.m.

* - CAA game # - Brown Bear Classic
\$ - Holiday Inn University Area Cavalier Classic

ELON 14-10 Overall/7-6 CAA



- Elon Head Coach **Charlotte Smith** was one of 10 members chosen for the 2015 Class of the North Carolina Sports Hall of Fame.
- **Sam Coffey** was named to the CoSIDA Academic All-District First Team for the second straight year. She holds a 3.89 in biochemistry and is eligible for Academic All-American consideration.
- Elon is in its first season as a member of the Colonial Athletic Association.
- The Phoenix notched their first-ever CAA win in their conference opener at Delaware, defeating the Blue Hens 60-50.
- The Phoenix posted 84 points, including 15 three-pointers in the win at Towson on February 5.
- **Essence Baucom** has tallied 107 assists in 23 games (4.7 apg). Baucom posted a career-high nine assists in Elon's win at Charlotte.
- Elon opened the year at 4-0 for the first time under Head Coach **Charlotte Smith** and the first time since the 1997-98 season.
- Elon returned four of its five starters from last season, including SoCon Freshman of the Year **Jenifer Rhodes**.
- **In 2013-14:** The Phoenix posted 15 victories last season, 10 of which came in SoCon action. Elon led the SoCon in three-point field goal percentage (.367) and blocks per game (5.1).

ELON (14-10; 7-6 CAA)

N 14	ANDERSON	W, 77-72
N 16	NAVY	W, 69-53
N 21	at Charlotte	W, 67-54
N 25	LIBERTY	W, 73-62
N 30	at High Point	L, 71-87
D 07	at NC State	L, 51-84
D 14	VANDERBILT	L, 50-66
D 17	at Campbell	W, 77-51
D 21	vs. #6/6 North Carolina&	L, 67-85
D 29	FURMAN	W, 81-71
D 31	LENOIR-RHYNE	W, 62-46
J 04	*at Delaware	W, 60-50
J 06	*DREXEL	L, 47-57
J 09	*at William & Mary	W, 72-59
J 11	*COLLEGE OF CHARLESTON	W, 77-68
J 15	*JAMES MADISON	L, 51-68
J 18	*TOWSON	W, 58-43
J 22	*at UNCW	L, 68-76
J 25	*NORTHEASTERN	W, 80-77 (OT)
J 30	*at James Madison	L, 60-89
F 05	*at Towson	W, 84-70
F 08	*at College of Charleston	W, 75-71
F 12	*UNCW	L, 82-86
F 15	*HOFSTRA	L, 53-55
F 19	*at Northeastern	7:00 p.m.
F 22	*WILLIAM & MARY	2:00 p.m.
F 27	*at Drexel	7:00 p.m.
M 01	*at Hofstra	1:00 p.m.
M 04	*DELAWARE	7:00 p.m.

* - CAA game & - Game played in Myrtle Beach, S.C.

HOFSTRA 16-9 Overall/9-5 CAA



- Sophomore guard **Krystal Luciano** had 14 assists against Northeastern, the most in the CAA this season. It also tied her for tenth-most in CAA single game history.
- Guard **Kelly Loftus** scored 30 points against JMU on February 6. In the second half alone, Loftus scored 28 points.
- The Pride set a season high and tied the fifth-highest CAA single-game total with 13 blocks against UNCW on January 18. **Anjie White** had seven of those blocks.
- Hofstra set a season high with 12 three-pointers against Northeastern on January 6.
- Rookie **Ashunae Durant** has posted double figures in 16 out of 23 games this season.
- Sophomore **Elo Edeferioka** has six double-doubles this year. She's scored in double figures 10 times and posted double-digit rebounds 11 times.
- **Darius Faulk** and **Elo Edeferioka** were named to the Hofstra Thanksgiving Tournament All-Tournament Team.
- The Pride is without a senior this season.
- The Pride knocked off Boston College, 75-61, on December 21. It was the first win over an ACC opponent for Hofstra under Head Coach **Krista Kilburn-Steveskey**.
- Junior **Sydni Epps** is currently serving as the CAA's National Student-Athlete Advisory Committee (SAAC) representative. She is one of 32 student-athletes nationally to hold the position.

HOFSTRA (16-9; 9-5 CAA)

N 14	CENTRAL CONNECTICUT	L, 66-71 (OT)
N 18	FAIRFIELD	W, 66-53
N 21	at Fordham	L, 42-60
N 23	at Norfolk State	W, 64-47
N 28	NORTHERN IOWA\$	W, 61-58 (OT)
N 29	#RV WESTERN KENTUCKY\$	L, 65-70 (OT)
D 02	at Albany	W, 65-55
D 06	ROBERT MORRIS	W, 71-51
D 09	at NJIT	W, 62-47
D 21	at Boston College	W, 75-61
D 30	at Virginia Tech	L, 43-60
J 04	*COLLEGE OF CHARLESTON	W, 78-53
J 06	*NORTHEASTERN	W, 85-83 (OT)
J 09	*at Drexel	W, 53-52 (OT)
J 11	*at Towson	W, 58-42
J 15	*at Delaware	L, 53-64
J 18	*UNCW	W, 71-57
J 22	*DREXEL	L, 56-63
J 25	*at William & Mary	L, 56-57
J 29	*at Northeastern	W, 66-45
F 01	*DELAWARE	L, 62-73
F 06	*JAMES MADISON	L, 68-77
F 08	*WILLIAM & MARY	W, 52-46
F 13	*at College of Charleston	W, 69-57
F 15	*at Elon	W, 55-53
F 19	*TOWSON	7:00 p.m.
F 22	*at James Madison	2:00 p.m.
M 01	*ELON	1:00 p.m.
M 04	*at UNCW	7:00 p.m.

* - CAA game \$ - Hofstra Thanksgiving Tournament

CAA WOMEN'S BASKETBALL WEEKLY REPORT • FEBRUARY 16, 2015

JAMES MADISON 22-2 Overall/13-0 CAA



- The Dukes have won 31 of their last 32 CAA games, including the postseason.
- Three Dukes have scored in double figures 16 times this season. The Dukes have had four in double digits 10 times.
- Head Coach **Kenny Brooks** recorded his 303rd win on February 15, making him all-time winningest coach in program history.
- Guard **Toia Giggetts** record her 1,000th career point in the win over UNCW on January 6. Guard **Precious Hall** recorded her 1,000th career point in the win at Davidson.
- Guard **Angela Mickens** just missed a triple-double against Pitt, finishing with 13 assists, 12 points, and eight rebounds.
- The Dukes have come back from double-digit deficits to win twice this season. First against UCLA and again versus Towson. Under Head Coach **Kenny Brooks**, JMU has come back from a double-digit deficit to win 18 times.
- The Dukes opened the season by upsetting then-ranked No. 23 UCLA, 91-87, in overtime at the JMU Convocation Center. **Lauren Okafor** had a career day with 16 points and 16 rebounds. **Precious Hall** went 12-for-12 from the free throw line.
- Junior **Precious Hall** was named the 2014 CAA Preseason Player of the Year while senior **Toia Giggetts** joined her on the Preseason All-CAA First Team. **Jazmon Gwathmey** was on the Preseason All-CAA Second Team.

23/RV JAMES MADISON (22-2; 13-0 CAA)

N 14	#23/23 UCLA	W, 91-87 (OT)
N 16	ST. BONAVENTURE	W, 76-43
N 20	at American	W, 69-65
N 23	PITTSBURGH	W, 80-64
N 28	vs. #8/10 Maryland\$	L, 64-80
N 29	vs. Houston\$	W, 84-60
D 03	RICHMOND	W, 79-68
D 07	at Davidson	W, 73-57
D 15	at Ohio	W, 69-62
D 20	HAMPTON	W, 85-53
D 29	at Vanderbilt	L, 62-66
J 04	*TOWSON	W, 67-66
J 06	*UNCW	W, 74-57
J 09	*at Northeastern	W, 77-55
J 11	*at William & Mary	W, 65-43
J 15	*at Elon	W, 68-51
J 18	*DREXEL	W, 66-51
J 22	*WILLIAM & MARY	W, 92-50
J 25	*at College of Charleston	W, 73-53
J 30	*ELON	W, 89-60
F 06	*at Hofstra	W, 77-68
F 08	*at Drexel	W, 73-54
F 12	*at Towson	W, 79-64
F 15	*DELAWARE	W, 94-64
F 19	*at UNCW	7:00 p.m.
F 22	*HOFSTRA	2:00 p.m.
F 27	*NORTHEASTERN	7:00 p.m.
M 01	*at Delaware	2:00 p.m.
M 04	*COLLEGE OF CHARLESTON	7:00 p.m.

* - CAA game \$ - San Juan Shootout

UNCW 10-14 Overall/6-7 CAA



- The Seahawks have six CAA wins, surpassing their conference win total from each of the last two seasons.
- Nine of UNCW's 10 wins have come at Trask Coliseum
- The Seahawks have led at the half in 11 of 24 games this season.
- UNCW has posted 80 points five times.
- UNCW has had 50+ rebounds four times, including 54 at JMU on January 6.
- Guard **Kelva Atkins** had a big night against Charleston Southern. She posted 40 points, including the 1,000th of her career, and 10 rebounds. Atkins followed that up with 37 points against FAU. She also had 30 points against Northeastern on February 15.
- The 89 points scored by the Seahawks in the win over Campbell marked the highest single-game point total for UNCW in the **Adell Harris** era.
- UNCW, under third-year Head Coach **Adell Harris**, returns all five starters last year.
- After sitting out the 2013-14 season, transfers **Shatia Cole** (Coastal Carolina), **Jasmine Steel** (Alabama), **Sarah Myatt** (Queens), and **Jordan Henry** (Iona) are eligible to suit up for the Seahawks.

UNCW (10-14; 6-7 CAA)

N 16	UNC PEMBROKE	W, 75-38
N 19	CAMPBELL	W, 89-80
N 22	at Appalachian State	L, 72-82
N 28	NORTH FLORIDA#	L, 41-55
N 29	WESTERN CAROLINA#	L, 53-64
D 02	VCU	L, 53-59
D 17	RICHMOND	L, 67-77
D 19	EAST TENNESSEE STATES	W, 61-48
D 20	CHARLESTON SOUTHERN\$	W, 80-70
D 29	at Florida Atlantic	L, 80-84
D 31	at Stetson	L, 55-72
J 04	*WILLIAM & MARY	W, 63-62
J 06	*at James Madison	L, 57-74
J 09	*COLLEGE OF CHARLESTON	W, 69-57
J 11	*at Drexel	L, 53-58
J 16	*at Northeastern	L, 64-73
J 18	*at Hofstra	L, 57-71
J 22	*ELON	W, 76-68
J 25	*TOWSON	W, 71-63
J 29	* at William & Mary	L, 62-67
F 01	*DREXEL	L, 44-61
F 08	*at Delaware	L, 60-69
F 12	*at Elon	W, 86-82
F 15	*NORTHEASTERN	W, 84-78
F 19	*JAMES MADISON	7:00 p.m.
F 22	*at Towson	2:00 p.m.
F 26	*DELAWARE	7:00 p.m.
M 01	*at College of Charleston	1:00 p.m.
M 04	*HOFSTRA	7:00 p.m.

* - CAA game # - UNCW Hampton Inn Thanksgiving Classic
\$ - Seahawk Hampton Inn Christmas Invitational)

NORTHEASTERN 4-19 Overall/1-12 CAA



- The Huskies topped UNCW, 73-64, at the Cabot Center on January 16 for their first CAA win of the season and the first league win for Head Coach **Kelly Cole**.
- Northeastern scored 44 points in the opening half against UNCW on February 15, the most in an opening stanza this season.
- At least three players have registered double figures in scoring in all but six games this season.
- **Samantha DeFreese** has posted double figures in 10 of the last 12 games, which includes five 20-point efforts.
- The Huskies have been without junior **Tiffany Montagne** who was averaging 12.2 points over the first 10 contests.
- The Huskies were held to 13 points in the first half at Drexel in the CAA opener.
- Head Coach **Kelly Cole** is in her first season at the helm of the Huskies. Cole was a longtime assistant coach at Harvard, Boston College, and Northwestern.
- Northeastern gave Head Coach **Kelly Cole** her first collegiate victory but clipping city rival Boston University, 75-74, in the season opener at the Cabot Center.

NORTHEASTERN (4-19; 1-12 CAA)

N 14	BOSTON UNIVERSITY	W, 75-74
N 18	at No. 22/24 Rutgers	L, 60-74
N 22	MARIST	W, 58-51
N 28	vs. North Dakota State#	L, 72-79
N 29	at FAU#	L, 74-81
D 13	at Maine	L, 51-60
D 20	at Harvard	L, 65-67
D 22	NEW HAMPSHIRE	L, 62-63
D 28	at Albany	W, 70-67
D 31	at Boston College	L, 56-66
J 04	*at Drexel	L, 35-58
J 06	*at Hofstra	L, 83-85 (OT)
J 09	*JAMES MADISON	L, 55-77
J 11	*DELAWARE	L, 48-54
J 16	*UNCW	W, 73-64
J 18	*at College of Charleston	L, 38-59
J 22	*at Towson	L, 61-65
J 25	*at Elon	L, 77-80 (OT)
J 29	*HOFSTRA	L, 45-66
F 01	*WILLIAM & MARY	L, 66-72 (OT2)
F 05	*at Delaware	L, 61-70
F 08	*TOWSON	L, 64-72
F 15	*at UNCW	L, 78-84
F 19	*ELON	7:00 p.m.
F 22	*COLLEGE OF CHARLESTON	2:00 p.m.
F 27	*at James Madison	7:00 p.m.
M 01	*at William & Mary	2:00 p.m.
M 04	*DREXEL	7:00 p.m.

* - CAA game # - FAU Thanksgiving Tournament

CAA WOMEN'S BASKETBALL WEEKLY REPORT • FEBRUARY 16, 2015

TOWSON 10-16 Overall/6-8 CAA



- Guard **LaTorri Hines-Allen** has 12 double-doubles in 26 games this season. She's tallied at least 20 points 11 times, including a 31-point effort in the CAA opener against JMU.
- Senior **Ciara Webb** has been hot in CAA play, averaging 10.9 points and 6.5 rebounds against conference foes.
- Rookie **Breonn Hughey** leads the Tigers in assists (5.0/g). She handed out 10 against George Mason on December 28 while scoring 11 points for her collegiate first double-double. She also had 10 helpers against Drexel on February 15.
- The Tigers set a program record with 12 three-pointers against Northeastern on January 22.
- Head Coach **Niki Reid Geckeler** posted her 100th career victory on November 25 in the win over UMBC.
- Senior **Dominique Johnson** has had a pair of 30-point games this season. She had the CAA's first 30-point game of the year, notching 32 points, with six three-pointers, in 36 minutes of action against Penn State.
- The Tigers return three starters from 2013-14, including senior **LaTorri Hines-Allen** who was named to the Preseason All-CAA First Team, and have brought in six true freshmen.

TOWSON (10-16; 6-8 CAA)

N 14	at Penn State#	L, 64-71
N 21	RIDER#	W, 53-51
N 22	NORTH DAKOTA#	L, 52-54
N 25	at UMBC	W, 59-54
N 28	vs. Rhode Island\$	L, 49-60
N 29	vs. La Salle\$	L, 49-62
D 02	at Navy	L, 51-55
D 04	at Loyola	W, 63-50
D 07	at No. 15/10 Maryland	L, 52-81
D 18	at Wake Forest	L, 64-74
D 28	GEORGE MASON	W, 72-70
D 31	GEORGE WASHINGTON	L, 48-82
J 04	*at James Madison	L, 66-67
J 06	*WILLIAM & MARY	W, 77-69 (OT)
J 09	*DELAWARE	W, 56-49
J 11	*HOFSTRA	L, 42-58
J 16	*at College of Charleston	W, 56-52
J 18	*at Elon	L, 43-58
J 22	*NORTHEASTERN	W, 65-61
J 25	*at UNCW	L, 63-71
J 29	*at Delaware	L, 54-72
F 01	*COLLEGE OF CHARLESTON	W, 71-49
F 05	*ELON	L, 70-84
F 08	*at Northeastern	W, 72-64
F 12	*JAMES MADISON	L, 64-79
F 15	*DREXEL	L, 52-66
F 19	*at Hofstra	7:00 p.m.
F 22	*UNCW	2:00 p.m.
M 01	*at Drexel	3:00 p.m.
M 04	*at William & Mary	7:00 p.m.

* - CAA game # - Preseason WNIT
\$ - LIU Brooklyn Turkey Classic

WILLIAM & MARY 12-13 Overall/6-8 CAA



- W&M picked up its 12th win of the season on February 15, which is the most victories in a season since the 2009-10 season.
- The Green and Gold has forced more than 20 miscues in a game on 14 occasions.
- The Tribe has posted 10+ steals in 19 out of 25 games this season.
- Sophomore **Alex Masaquel** is averaging 8.2 points and 6.4 rebounds along with 36 steals in CAA play.
- Sophomore **Marlena Tremba** has hit a three-pointer in all but four games of her career (50 of 51 games). Her 34-game streak with a three-pointer was halted on January 9.
- Rookie **Abby Rendle** swatted seven shots against Richmond on December 28.
- After missing the first four games with injury, senior **Kyla Kerstetter** returned to the lineup in the win over VCU, scoring 12 points to go along with a five steals.

WILLIAM & MARY (12-13; 6-8 CAA)

N 14	LOYOLA (MD)	W, 72-71
N 17	at Old Dominion	L, 58-65
N 21	at North Carolina A&T	W, 59-57
N 23	at High Point	L, 80-87
N 26	VCU	W, 56-48
N 29	LONGWOOD	W, 90-55
D 02	at Radford	W, 81-77
D 06	at La Salle	L, 71-78
D 18	at Wofford	W, 71-51
D 21	MAINE	L, 51-54
D 28	RICHMOND	L, 56-59
J 04	*at UNCW	L, 62-63
J 06	*at Towson	L, 69-77 (OT)
J 09	*ELON	L, 59-72
J 11	*JAMES MADISON	L, 43-65
J 16	*DREXEL	L, 46-49
J 18	*at Delaware	W, 50-48
J 22	*at James Madison	L, 50-92
J 25	*HOFSTRA	W, 57-56
J 29	*UNCW	W, 67-62
F 01	*at Northeastern	W, 77-62 (OT2)
F 06	*at Drexel	W, 72-68 (OT2)
F 08	*at Hofstra	L, 46-52
F 13	*DELAWARE	L, 56-61
F 15	*COLLEGE OF CHARLESTON	W, 74-59
F 22	*at Elon	2:00 p.m.
F 26	*at College of Charleston	7:00 p.m.
M 01	*NORTHEASTERN	2:00 p.m.
M 04	*TOWSON	7:00 p.m.

* - CAA game

2014-15 CAA WOMEN'S BASKETBALL PREDICTED ORDER OF FINISH

1. James Madison
2. Delaware
3. Drexel
4. Hofstra
5. Towson
6. Elon
7. Northeastern
8. William & Mary
9. College of Charleston
10. UNCW

CAA PRESEASON HONORS

PRESEASON PLAYER OF THE YEAR

Precious Hall, James Madison

PRESEASON ALL-CAA FIRST TEAM

Kelva Atkins, UNCW • Sr., G
Toia Giggetts, James Madison • Sr., F
Precious Hall, James Madison • Jr., G
LaTorri Hines-Allen, Towson • Sr., F
A'lece Mark, Northeastern • Sr., G

PRESEASON ALL-CAA SECOND TEAM

Courtnei Green, Delaware • Jr., G
Jazmon Gwathmey, James Madison • Jr., G
Mikaela Hopkins, CofC • Sr., F/C
Rachel Pearson, Drexel • Jr., G
Marlena Tremba, William & Mary • So., G

HONORABLE MENTION

Joy Caracciolo, Delaware • Sr., F
Elo Edeferioka, Hofstra • So., F
Dominique Johnson, Towson • Jr., G
Brie Mobley, UNCW • So., G



2014-15 CAA Women's Basketball
CONFERENCE BASKETBALL STATISTICS
Through games of Feb 15, 2015 (All games)



SCORING OFFENSE				
	G	W-L	Pts	Avg/G
1. JMU	24	22-2	1826	76.1
2. ELON	24	14-10	1612	67.2
3. UNCW	24	10-14	1572	65.5
4. William & Mary	25	12-13	1568	62.7
5. HOFSTRA	25	16-9	1566	62.6
6. NORTHEASTERN	23	4-19	1427	62.0
7. DELAWARE	25	13-12	1524	61.0
8. TOWSON	26	10-16	1527	58.7
9. DREXEL	24	15-9	1402	58.4
10. Col. of Charleston	24	4-20	1320	55.0

SCORING DEFENSE			
	G	Pts	Avg/G
1. DREXEL	24	1353	56.4
2. HOFSTRA	25	1455	58.2
3. JMU	24	1441	60.0
4. DELAWARE	25	1510	60.4
5. William & Mary	25	1586	63.4
6. TOWSON	26	1663	64.0
7. ELON	24	1603	66.8
8. UNCW	24	1612	67.2
9. Col. of Charleston	24	1615	67.3
10. NORTHEASTERN	23	1588	69.0

SCORING MARGIN				
	G	Offense	Defense	Margin
1. JMU	24	76.1	60.0	+16.0
2. HOFSTRA	25	62.6	58.2	+4.4
3. DREXEL	24	58.4	56.4	+2.0
4. DELAWARE	25	61.0	60.4	+0.6
5. ELON	24	67.2	66.8	+0.4
6. William & Mary	25	62.7	63.4	-0.7
7. UNCW	24	65.5	67.2	-1.7
8. TOWSON	26	58.7	64.0	-5.2
9. NORTHEASTERN	23	62.0	69.0	-7.0
10. Col. of Charleston	24	55.0	67.3	-12.3

FREE THROW PCT				
	G	FTM	FTA	Pct.
1. DREXEL	24	250	317	.789
2. DELAWARE	25	334	463	.721
3. JMU	24	370	523	.707
4. NORTHEASTERN	23	247	357	.692
5. William & Mary	25	302	446	.677
6. UNCW	24	295	440	.670
7. ELON	24	287	433	.663
8. HOFSTRA	25	327	494	.662
9. Col. of Charleston	24	217	336	.646
10. TOWSON	26	246	387	.636

FIELD GOAL PERCENTAGE				
	G	FGM	FGA	Pct.
1. ELON	24	578	1364	.424
2. JMU	24	653	1558	.419
3. William & Mary	25	577	1447	.399
4. UNCW	24	588	1484	.396
5. DREXEL	24	517	1310	.395
6. NORTHEASTERN	23	517	1327	.390
7. DELAWARE	25	540	1398	.386
8. HOFSTRA	25	559	1450	.386
9. Col. of Charleston	24	515	1395	.369
10. TOWSON	26	562	1555	.361

FIELD GOAL PCT DEFENSE				
	G	FGM	FGA	Pct.
1. JMU	24	501	1385	.362
2. HOFSTRA	25	521	1426	.365
3. DELAWARE	25	553	1427	.388
4. DREXEL	24	484	1245	.389
5. ELON	24	567	1458	.389
6. TOWSON	26	601	1520	.395
7. William & Mary	25	583	1464	.398
8. Col. of Charleston	24	590	1420	.415
9. NORTHEASTERN	23	574	1374	.418
10. UNCW	24	589	1370	.430

3-POINT FG PCT				
	G	3FGM	3FGA	Pct.
1. DELAWARE	25	110	299	.368
2. JMU	24	150	415	.361
3. ELON	24	169	487	.347
4. UNCW	24	101	300	.337
5. DREXEL	24	118	362	.326
6. NORTHEASTERN	23	146	448	.326
7. William & Mary	25	112	351	.319
8. TOWSON	26	157	540	.291
9. HOFSTRA	25	121	440	.275
10. Col. of Charleston	24	73	290	.252

3-POINT FG PCT DEFENSE				
	G	3FGM	3FGA	Pct.
1. JMU	24	108	364	.297
2. DREXEL	24	120	404	.297
3. ELON	24	136	453	.300
4. Col. of Charleston	24	149	492	.303
5. HOFSTRA	25	110	359	.306
6. TOWSON	26	131	422	.310
7. William & Mary	25	132	395	.334
8. DELAWARE	25	144	429	.336
9. NORTHEASTERN	23	146	430	.340
10. UNCW	24	127	366	.347

REBOUNDING OFFENSE			
	G	Rebounds	Avg/G
1. JMU	24	1097	45.7
2. HOFSTRA	25	1029	41.2
3. UNCW	24	947	39.5
4. DELAWARE	25	960	38.4
5. ELON	24	919	38.3
6. TOWSON	26	974	37.5
7. Col. of Charleston	24	897	37.4
8. NORTHEASTERN	23	854	37.1
9. William & Mary	25	877	35.1
10. DREXEL	24	779	32.5

REBOUNDING DEFENSE			
	G	Rebounds	Avg/G
1. JMU	24	845	35.2
2. HOFSTRA	25	897	35.9
3. DELAWARE	25	910	36.4
4. DREXEL	24	878	36.6
5. UNCW	24	885	36.9
6. ELON	24	925	38.5
7. NORTHEASTERN	23	894	38.9
8. Col. of Charleston	24	963	40.1
9. William & Mary	25	1042	41.7
10. TOWSON	26	1090	41.9



2014-15 CAA Women's Basketball
CONFERENCE BASKETBALL STATISTICS
Through games of Feb 15, 2015 (All games)



REBOUNDING MARGIN	G	Team	Avg.	Opp.	Avg.	Margin
1.	JMU	24	1097	45.7	845	35.2 +10.5
2.	HOFSTRA	25	1029	41.2	897	35.9 +5.3
3.	UNCW	24	947	39.5	885	36.9 +2.6
4.	DELAWARE	25	960	38.4	910	36.4 +2.0
5.	ELON	24	919	38.3	925	38.5 -0.2
6.	NORTHEASTERN	23	854	37.1	894	38.9 -1.7
7.	Col. of Charleston	24	897	37.4	963	40.1 -2.8
8.	DREXEL	24	779	32.5	878	36.6 -4.1
9.	TOWSON	26	974	37.5	1090	41.9 -4.5
10.	William & Mary	25	877	35.1	1042	41.7 -6.6

BLOCKED SHOTS	G	No.	Avg/G
1.	William & Mary	25	120 4.8
2.	ELON	24	112 4.7
3.	JMU	24	92 3.8
4.	DELAWARE	25	92 3.7
5.	TOWSON	26	95 3.7
6.	HOFSTRA	25	73 2.9
7.	Col. of Charleston	24	64 2.7
8.	DREXEL	24	60 2.5
9.	NORTHEASTERN	23	50 2.2
10.	UNCW	24	52 2.2

ASSISTS	G	No.	Avg/G
1.	JMU	24	376 15.7
2.	DREXEL	24	354 14.8
3.	William & Mary	25	366 14.6
4.	HOFSTRA	25	359 14.4
5.	ELON	24	324 13.5
6.	TOWSON	26	333 12.8
7.	NORTHEASTERN	23	286 12.4
8.	DELAWARE	25	295 11.8
9.	UNCW	24	266 11.1
10.	Col. of Charleston	24	251 10.5

STEALS	G	No.	Avg/G
1.	William & Mary	25	287 11.5
2.	DREXEL	24	205 8.5
3.	UNCW	24	202 8.4
4.	ELON	24	186 7.8
5.	Col. of Charleston	24	183 7.6
6.	HOFSTRA	25	180 7.2
7.	JMU	24	169 7.0
8.	TOWSON	26	179 6.9
9.	DELAWARE	25	162 6.5
10.	NORTHEASTERN	23	132 5.7

TURNOVER MARGIN	G	Team	Avg.	Opp.	Avg.	Margin
1.	DREXEL	24	340 14.2	427 17.8	+3.6	
2.	William & Mary	25	439 17.6	516 20.6	+3.1	
3.	JMU	24	352 14.7	416 17.3	+2.7	
4.	UNCW	24	378 15.8	394 16.4	+0.7	
5.	TOWSON	26	353 13.6	356 13.7	+0.1	
6.	HOFSTRA	25	452 18.1	434 17.4	-0.7	
7.	DELAWARE	25	371 14.8	350 14.0	-0.8	
8.	Col. of Charleston	24	447 18.6	400 16.7	-2.0	
9.	NORTHEASTERN	23	395 17.2	338 14.7	-2.5	
10.	ELON	24	442 18.4	380 15.8	-2.6	

ASSIST/TURNOVER RATIO	G	Ast.	Avg.	T/O	Avg.	Ratio
1.	JMU	24	376 15.7	352 14.7	1.1	
2.	DREXEL	24	354 14.8	340 14.2	1.0	
3.	TOWSON	26	333 12.8	353 13.6	0.9	
4.	William & Mary	25	366 14.6	439 17.6	0.8	
5.	DELAWARE	25	295 11.8	371 14.8	0.8	
6.	HOFSTRA	25	359 14.4	452 18.1	0.8	
7.	ELON	24	324 13.5	442 18.4	0.7	
8.	NORTHEASTERN	23	286 12.4	395 17.2	0.7	
9.	UNCW	24	266 11.1	378 15.8	0.7	
10.	Col. of Charleston	24	251 10.5	447 18.6	0.6	

OFFENSIVE REBOUNDS	G	No.	Avg/G
1.	JMU	24	404 16.8
2.	UNCW	24	342 14.3
3.	HOFSTRA	25	356 14.2
4.	Col. of Charleston	24	320 13.3
5.	TOWSON	26	340 13.1
6.	DELAWARE	25	308 12.3
7.	NORTHEASTERN	23	278 12.1
8.	ELON	24	285 11.9
9.	William & Mary	25	270 10.8
10.	DREXEL	24	239 10.0

DEFENSIVE REBOUNDS	G	No.	Avg/G
1.	JMU	24	693 28.9
2.	HOFSTRA	25	673 26.9
3.	ELON	24	634 26.4
4.	DELAWARE	25	652 26.1
5.	UNCW	24	605 25.2
6.	NORTHEASTERN	23	576 25.0
7.	TOWSON	26	634 24.4
8.	William & Mary	25	607 24.3
9.	Col. of Charleston	24	577 24.0
10.	DREXEL	24	540 22.5

DEFENSIVE REB PCT.	G	D-Reb	Opp. OR	D-Reb%
1.	JMU	24	693 264	.724
2.	UNCW	24	605 248	.709
3.	HOFSTRA	25	673 283	.704
4.	DELAWARE	25	652 289	.693
5.	NORTHEASTERN	23	576 297	.660
6.	DREXEL	24	540 286	.654
7.	ELON	24	634 337	.653
8.	TOWSON	26	634 365	.635
9.	Col. of Charleston	24	577 340	.629
10.	William & Mary	25	607 363	.626

OFFENSIVE REB PCT.	G	O-Reb	Opp. DR	O-Reb%
1.	JMU	24	404 581	.410
2.	HOFSTRA	25	356 614	.367
3.	UNCW	24	342 637	.349
4.	Col. of Charleston	24	320 623	.339
5.	DELAWARE	25	308 621	.332
6.	ELON	24	285 588	.326
7.	TOWSON	26	340 725	.319
8.	NORTHEASTERN	23	278 597	.318
9.	DREXEL	24	239 592	.288
10.	William & Mary	25	270 679	.285



2014-15 CAA Women's Basketball
CONFERENCE BASKETBALL STATISTICS
Through games of Feb 15, 2015 (All games)



3-POINT FG MADE	G	No.	Avg/G
1. ELON	24	169	7.0
2. NORTHEASTERN	23	146	6.3
3. JMU	24	150	6.3
4. TOWSON	26	157	6.0
5. DREXEL	24	118	4.9
6. HOFSTRA	25	121	4.8
7. William & Mary	25	112	4.5
8. DELAWARE	25	110	4.4
9. UNCW	24	101	4.2
10. Col. of Charleston	24	73	3.0



2014-15 CAA Women's Basketball
 CONFERENCE BASKETBALL STATISTICS
 Through games of Feb 15, 2015 (All games)



Team	Conference	Pct.	PF	PA	Overall	Pct.	PF	PA	Current unbeaten streak
JMU	13-0	1.000	76.5	56.6	22-2	.917	76.1	60.0	JMU -- 13
DREXEL	9-4	.692	58.6	53.8	15-9	.625	58.4	56.4	HOFSTRA -- 3
HOFSTRA	9-5	.643	63.0	58.7	16-9	.640	62.6	58.2	UNCW -- 2
DELAWARE	8-6	.571	61.4	58.5	13-12	.520	61.0	60.4	DREXEL -- 1
ELON	7-6	.538	66.7	66.8	14-10	.583	67.2	66.8	William & Mary -- 1
UNCW	6-7	.462	65.1	67.9	10-14	.417	65.5	67.2	
William & Mary	6-8	.429	58.8	63.6	12-13	.480	62.7	63.4	
TOWSON	6-8	.429	60.8	64.2	10-16	.385	58.7	64.0	
Col. of Charleston	2-11	.154	56.1	67.2	4-20	.167	55.0	67.3	
NORTHEASTERN	1-12	.077	60.3	69.7	4-19	.174	62.0	69.0	

TEAM SUMMARIES	G	PF-PA	Avg score	Margin	FG-FGA	Pct.	3FG-FGA	Pct.	FT-FTA	Pct.	RebF	RebA	Margin
Col. of Charleston	24	1320-1615	55.0-67.3	-12.3	515-1395	.369	73-290	.252	217-336	.646	897	963	-2.8
DELAWARE	25	1524-1510	61.0-60.4	+0.6	540-1398	.386	110-299	.368	334-463	.721	960	910	+2.0
DREXEL	24	1402-1353	58.4-56.4	+2.0	517-1310	.395	118-362	.326	250-317	.789	779	878	-4.1
ELON	24	1612-1603	67.2-66.8	+0.4	578-1364	.424	169-487	.347	287-433	.663	919	925	-0.2
HOFSTRA	25	1566-1455	62.6-58.2	+4.4	559-1450	.386	121-440	.275	327-494	.662	1029	897	+5.3
JMU	24	1826-1441	76.1-60.0	+16.0	653-1558	.419	150-415	.361	370-523	.707	1097	845	+10.5
NORTHEASTERN	23	1427-1588	62.0-69.0	-7.0	517-1327	.390	146-448	.326	247-357	.692	854	894	-1.7
TOWSON	26	1527-1663	58.7-64.0	-5.2	562-1555	.361	157-540	.291	246-387	.636	974	1090	-4.5
UNCW	24	1572-1612	65.5-67.2	-1.7	588-1484	.396	101-300	.337	295-440	.670	947	885	+2.6
William & Mary	25	1568-1586	62.7-63.4	-0.7	577-1447	.399	112-351	.319	302-446	.677	877	1042	-6.6

ATTENDANCE	Home	Average	Away	Average	Neutral	Average	Total	Average
Col. of Charleston	9-3965	441	12-9883	824	3-5100	1700	24-18948	790
DELAWARE	12-20955	1746	12-14232	1186	1-164	164	25-35351	1414
DREXEL	11-7803	709	10-13186	1319	3-3719	1240	24-24708	1030
ELON	13-5858	451	10-10273	1027	1-0	0	24-16131	672
HOFSTRA	12-6725	560	13-8639	665	0-0	0	25-15364	615
JMU	11-32068	2915	11-8164	742	2-254	127	24-40486	1687
NORTHEASTERN	9-3590	399	13-9393	723	1-595	595	23-13578	590
TOWSON	12-5438	453	12-18412	1534	2-742	371	26-24592	946
UNCW	14-14661	1047	10-7823	782	0-0	0	24-22484	937
William & Mary	12-5021	418	13-11622	894	0-0	0	25-16643	666
Totals	115-106084	922	116-111627	962	13-10574	813	244-228285	936



2014-15 CAA Women's Basketball
INDIVIDUAL BASKETBALL STATISTICS
Through games of Feb 15, 2015 (All games)



To be ranked, a player must appear in at least 75.0% of their team's games.

SCORING							REBOUNDING						
	Cl	G	FG	3FG	FT	Pts Avg/G		Cl	G	Off	Def	Total	Avg/G
1. Hall, Precious-JMU	Jr	24	168	79	80	495 20.6	1. Okafor, Lauren-JMU	Sr	24	105	135	240	10.0
2. Atkins, Kelva-UNCW	Sr	24	142	27	119	430 17.9	2. Hines-Allen, LaTorri-Towson	Sr	26	74	175	249	9.6
3. Hines-Allen, LaTorri-Towson	Sr	26	171	0	112	454 17.5	3. Edeferioka, Elo-Hofstra	So	25	90	137	227	9.1
4. Brown, Erika-Delaware	So	25	123	20	97	363 14.5	4. Durant, Ashunae-Hofstra	Fr	23	94	86	180	7.8
5. Green, Courtnei-Delaware	Jr	25	116	46	82	360 14.4	5. Teague, Naqaiyyah-UNCW	So	24	70	116	186	7.8
6. DeFreese, Samantha-NU	Jr	23	127	9	55	318 13.8	6. Jardine, Hannah-Delaware	So	25	43	138	181	7.2
7. Okafor, Lauren-JMU	Sr	24	120	0	83	323 13.5	7. DeFreese, Samantha-NU	Jr	23	43	123	166	7.2
8. Johnson, Dominique-Towson	Jr	26	119	59	50	347 13.3	8. Sally, Francesca-NU	So	22	51	107	158	7.2
9. Bolden, Breanna-COFC	So	23	115	6	64	300 13.0	9. Flowers, Ryan-UNCW	So	23	76	86	162	7.0
10. Tremba, Marlana-WM	So	25	99	56	71	325 13.0	10. Bolden, Breanna-COFC	So	23	58	102	160	7.0
11. Loftus, Kelly-Hofstra	So	24	97	65	51	310 12.9	11. Masaquel, Alexandra-WM	So	24	46	111	157	6.5
12. Mark, A'lece-NU	Sr	20	87	35	42	251 12.6	12. Caracciolo, Joy-Delaware	Sr	24	63	86	149	6.2
13. Pearson, Rachel-Drexel	Jr	24	101	63	21	286 11.9	13. Boone, Jazmen-WM	Sr	25	57	93	150	6.0
14. Curran, Sarah-Drexel	So	24	114	14	40	282 11.8	14. Giggetts, Toia-JMU	Sr	24	49	93	142	5.9
15. Boone, Jazmen-WM	Sr	25	106	3	77	292 11.7	15. Coffey, Sam-ELON	Sr	24	33	108	141	5.9
16. Jardine, Hannah-Delaware	So	25	105	39	40	289 11.6	16. Luna-Castro, Jackie-COFC	Jr	24	45	87	132	5.5
17. Mobley, Brie-UNCW	So	19	94	0	30	218 11.5	17. Nicholas, Makeda-Delaware	Fr	25	38	98	136	5.4
18. Durant, Ashunae-Hofstra	Fr	23	99	0	65	263 11.4	18. Atkins, Kelva-UNCW	Sr	24	44	83	127	5.3
19. Stephenson, Zora-ELON	Sr	24	88	67	14	257 10.7	19. Thompson, Jamila-Drexel	Sr	22	38	77	115	5.2
20. Hall, Erin-COFC	Sr	24	93	44	19	249 10.4	20. Johnson, Malaya-ELON	Fr	24	44	81	125	5.2

FIELD GOAL PCT						ASSISTS					
	Cl	G	FGM	FGA	Pct.		Cl	G	No.	Avg/G	
1. Okafor, Lauren-JMU	Sr	24	120	214	.561	1. Mickens, Angela-JMU	Jr	24	186	7.8	
2. Johnson, Malaya-ELON	Fr	24	82	148	.554	2. Hughey, Breonn-Towson	Fr	24	120	5.0	
3. DeFreese, Samantha-NU	Jr	23	127	249	.510	3. Faulk, Darius-Hofstra	Jr	22	108	4.9	
4. Durant, Ashunae-Hofstra	Fr	23	99	199	.497	4. Baucom, Essence-ELON	So	23	107	4.7	
5. Rendle, Abby-WM	Fr	24	80	167	.479	5. Luciano, Krystal-Hofstra	So	25	103	4.1	
6. Edeferioka, Elo-Hofstra	So	25	92	193	.477	6. Mercier, Amencie-NU	Sr	23	91	4.0	
7. Luna-Castro, Jackie-COFC	Jr	24	96	202	.475	7. Brown, Shiclasia-COFC	Fr	23	83	3.6	
8. Caracciolo, Joy-Delaware	Sr	24	84	178	.472	8. Atkins, Kelva-UNCW	Sr	24	84	3.5	
9. Rhodes, Jenifer-ELON	So	21	73	157	.465	9. Thompson, Jamila-Drexel	Sr	22	74	3.4	
10. Masaquel, Alexandra-WM	So	24	79	170	.465	10. Green, Jenna-WM	Fr	25	81	3.2	
11. Giggetts, Toia-JMU	Sr	24	87	195	.446	11. Hunter, Latrice-WM	So	25	72	2.9	
12. Jardine, Hannah-Delaware	So	25	105	240	.438	12. Boone, Jazmen-WM	Sr	25	70	2.8	
13. Curran, Sarah-Drexel	So	24	114	262	.435	13. Burnett, Shay-ELON	Fr	24	66	2.8	
14. Pearson, Rachel-Drexel	Jr	24	101	235	.430	14. Green, Courtnei-Delaware	Jr	25	65	2.6	
15. Atkins, Kelva-UNCW	Sr	24	142	339	.419	15. Hall, Precious-JMU	Jr	24	60	2.5	

FREE THROW PCT						STEALS					
	Cl	G	FTM	FTA	Pct.		Cl	G	No.	Avg/G	
1. Bolden, Breanna-COFC	So	23	64	78	.821	1. Bolden, Breanna-COFC	So	23	73	3.2	
2. Green, Courtnei-Delaware	Jr	25	82	101	.812	2. Boone, Jazmen-WM	Sr	25	64	2.6	
3. Hall, Precious-JMU	Jr	24	80	99	.808	3. Masaquel, Alexandra-WM	So	24	57	2.4	
4. Mark, A'lece-NU	Sr	20	42	53	.792	4. Mickens, Angela-JMU	Jr	24	52	2.2	
5. Brown, Erika-Delaware	So	25	97	123	.789	5. Faulk, Darius-Hofstra	Jr	22	42	1.9	
6. Loftus, Kelly-Hofstra	So	24	51	66	.773	6. Atkins, Kelva-UNCW	Sr	24	44	1.8	
7. Atkins, Kelva-UNCW	Sr	24	119	155	.768	7. Teague, Naqaiyyah-UNCW	So	24	43	1.8	
8. Tremba, Marlana-WM	So	25	71	94	.755	8. Tremba, Marlana-WM	So	25	41	1.6	
9. Boone, Jazmen-WM	Sr	25	77	107	.720	9. Baucom, Essence-ELON	So	23	35	1.5	
10. Durant, Ashunae-Hofstra	Fr	23	65	91	.714	10. Brown, Erika-Delaware	So	25	36	1.4	
11. Hines-Allen, LaTorri-Towson	Sr	26	112	157	.713	11. Mobley, Brie-UNCW	So	19	27	1.4	
12. Burnett, Shay-ELON	Fr	24	74	105	.705	12. Curran, Sarah-Drexel	So	24	33	1.4	
13. DeFreese, Samantha-NU	Jr	23	55	80	.688	13. Luciano, Krystal-Hofstra	So	25	34	1.4	
14. Edeferioka, Elo-Hofstra	So	25	51	77	.662	14. Hall, Precious-JMU	Jr	24	31	1.3	
15. Okafor, Lauren-JMU	Sr	24	83	127	.654	15. Thompson, Jamila-Drexel	Sr	22	28	1.3	



2014-15 CAA Women's Basketball
INDIVIDUAL BASKETBALL STATISTICS
Through games of Feb 15, 2015 (All games)



3-POINT FG PCT		Cl	G	3FG	FGA	Pct.
1.	Jardine, Hannah-Delaware	So	25	39	91	.429
2.	Pearson, Rachel-Drexel	Jr	24	63	156	.404
3.	Atkins, Kelva-UNCW	Sr	24	27	68	.397
4.	Brown, Lauren-ELON	So	24	39	99	.394
5.	Hall, Precious-JMU	Jr	24	79	202	.391
6.	Stephenson, Zora-ELON	Sr	24	67	177	.379
7.	Mark, A'lece-NU	Sr	20	35	100	.350
8.	Johnson, Dominique-Towson	Jr	26	59	179	.330
9.	Taggart, Maureen-NU	Fr	23	27	82	.329
10.	Loftus, Kelly-Hofstra	So	24	65	199	.327
11.	Coffer, Sam-ELON	Sr	24	32	98	.327
12.	Tremba, Marlana-WM	So	25	56	175	.320
13.	Hall, Erin-COFC	Sr	24	44	138	.319
14.	Mercier, Amencie-NU	Sr	23	29	91	.319
15.	Green, Courtney-Delaware	Jr	25	46	145	.317

3-POINT FG MADE		Cl	G	3FG	Avg/G
1.	Hall, Precious-JMU	Jr	24	79	3.3
2.	Stephenson, Zora-ELON	Sr	24	67	2.8
3.	Loftus, Kelly-Hofstra	So	24	65	2.7
4.	Pearson, Rachel-Drexel	Jr	24	63	2.6
5.	Johnson, Dominique-Towson	Jr	26	59	2.3
6.	Tremba, Marlana-WM	So	25	56	2.2
7.	Green, Courtney-Delaware	Jr	25	46	1.8
8.	Hall, Erin-COFC	Sr	24	44	1.8
9.	Mark, A'lece-NU	Sr	20	35	1.8
10.	Brown, Lauren-ELON	So	24	39	1.6
11.	Webb, Ciara-Towson	Sr	26	41	1.6
12.	Jardine, Hannah-Delaware	So	25	39	1.6
13.	Coffer, Sam-ELON	Sr	24	32	1.3
14.	Mercier, Amencie-NU	Sr	23	29	1.3
15.	Taggart, Maureen-NU	Fr	23	27	1.2

BLOCKED SHOTS		Cl	G	No.	Avg/G
1.	Rendle, Abby-WM	Fr	24	54	2.3
2.	Okafor, Lauren-JMU	Sr	24	39	1.6
3.	Luna-Castro, Jackie-COFC	Jr	24	36	1.5
4.	Johnson, Malaya-ELON	Fr	24	32	1.3
5.	Thompson, Jamila-Drexel	Sr	22	28	1.3
6.	Leon, Stephanie-Delaware	Sr	24	30	1.3
7.	Hines-Allen, LaTorri-Towson	Sr	26	31	1.2
8.	Nicholas, Makeda-Delaware	Fr	25	27	1.1
9.	Masaquel, Alexandra-WM	So	24	24	1.0
	Coffer, Sam-ELON	Sr	24	24	1.0

ASSIST/TURNOVER RATIO		Cl	G	Ast.	T/O	Ratio
1.	Mickens, Angela-JMU	Jr	24	186	67	2.8
2.	Hughey, Breonn-Towson	Fr	24	120	59	2.0
3.	Hunter, Latrice-WM	So	25	72	37	1.9
4.	Baucom, Essence-ELON	So	23	107	62	1.7
5.	Luciano, Krystal-Hofstra	So	25	103	63	1.6
6.	Faulk, Darius-Hofstra	Jr	22	108	70	1.5
7.	Mercier, Amencie-NU	Sr	23	91	72	1.3
8.	Thompson, Jamila-Drexel	Sr	22	74	60	1.2
9.	Green, Jenna-WM	Fr	25	81	68	1.2
10.	Green, Courtney-Delaware	Jr	25	65	55	1.2
11.	Boone, Jazmen-WM	Sr	25	70	77	0.9
12.	Atkins, Kelva-UNCW	Sr	24	84	96	0.9
13.	Hall, Precious-JMU	Jr	24	60	72	0.8
14.	Burnett, Shay-ELON	Fr	24	66	81	0.8
15.	Brown, Shiclasia-COFC	Fr	23	83	104	0.8

OFFENSIVE REBOUNDS		Cl	G	No.	Avg/G
1.	Okafor, Lauren-JMU	Sr	24	105	4.4
2.	Durant, Ashunae-Hofstra	Fr	23	94	4.1
3.	Edeferioka, Elo-Hofstra	So	25	90	3.6
4.	Flowers, Ryan-UNCW	So	23	76	3.3
5.	Teague, Naqaiyyah-UNCW	So	24	70	2.9
6.	Hines-Allen, LaTorri-Towson	Sr	26	74	2.8
7.	Caracciolo, Joy-Delaware	Sr	24	63	2.6
8.	Bolden, Breanna-COFC	So	23	58	2.5
9.	Sally, Francesca-NU	So	22	51	2.3
10.	Boone, Jazmen-WM	Sr	25	57	2.3
11.	Hewatt, Christy-COFC	Sr	23	50	2.2
12.	Smith, Markell-Towson	Sr	26	56	2.2
13.	Griffin, Da'Lishia-JMU	So	21	44	2.1
14.	Giggetts, Toia-JMU	Sr	24	49	2.0
15.	Jones, Destiny-JMU	Jr	24	47	2.0

DEFENSIVE REBOUNDS		Cl	G	No.	Avg/G
1.	Hines-Allen, LaTorri-Towson	Sr	26	175	6.7
2.	Okafor, Lauren-JMU	Sr	24	135	5.6
3.	Jardine, Hannah-Delaware	So	25	138	5.5
4.	Edeferioka, Elo-Hofstra	So	25	137	5.5
5.	DeFreese, Samantha-NU	Jr	23	123	5.3
6.	Sally, Francesca-NU	So	22	107	4.9
7.	Teague, Naqaiyyah-UNCW	So	24	116	4.8
8.	Masaquel, Alexandra-WM	So	24	111	4.6
9.	Coffer, Sam-ELON	Sr	24	108	4.5
10.	Bolden, Breanna-COFC	So	23	102	4.4
11.	Hall, Precious-JMU	Jr	24	100	4.2
12.	Nicholas, Makeda-Delaware	Fr	25	98	3.9
13.	Mickens, Angela-JMU	Jr	24	93	3.9
	Giggetts, Toia-JMU	Sr	24	93	3.9
15.	Burnett, Shay-ELON	Fr	24	90	3.8
	Pearson, Rachel-Drexel	Jr	24	90	3.8

MINUTES PLAYED		Cl	G	No.	Avg/G
1.	Mercier, Amencie-NU	Sr	23	884	38.4
2.	Pearson, Rachel-Drexel	Jr	24	899	37.5
3.	Hines-Allen, LaTorri-Towson	Sr	26	934	35.9
4.	Mickens, Angela-JMU	Jr	24	831	34.6
5.	Jardine, Hannah-Delaware	So	25	859	34.4
6.	Green, Courtney-Delaware	Jr	25	842	33.7
7.	Bolden, Breanna-COFC	So	23	774	33.7
8.	Tremba, Marlana-WM	So	25	831	33.2
9.	Boone, Jazmen-WM	Sr	25	830	33.2
10.	Hughey, Breonn-Towson	Fr	24	796	33.2



2014-15 CAA Women's Basketball
CONFERENCE BASKETBALL STATISTICS



Through games of Feb 15, 2015 (Conference games only)

SCORING OFFENSE	G	W-L	Pts	Avg/G
1. JMU	13	13-0	994	76.5
2. ELON	13	7-6	867	66.7
3. UNCW	13	6-7	846	65.1
4. HOFSTRA	14	9-5	882	63.0
5. DELAWARE	14	8-6	859	61.4
6. TOWSON	14	6-8	851	60.8
7. NORTHEASTERN	13	1-12	784	60.3
8. William & Mary	14	6-8	823	58.8
9. DREXEL	13	9-4	762	58.6
10. Col. of Charleston	13	2-11	729	56.1

SCORING DEFENSE	G	Pts	Avg/G
1. DREXEL	13	700	53.8
2. JMU	13	736	56.6
3. DELAWARE	14	819	58.5
4. HOFSTRA	14	822	58.7
5. William & Mary	14	890	63.6
6. TOWSON	14	899	64.2
7. ELON	13	869	66.8
8. Col. of Charleston	13	873	67.2
9. UNCW	13	883	67.9
10. NORTHEASTERN	13	906	69.7

SCORING MARGIN	G	Offense	Defense	Margin
1. JMU	13	76.5	56.6	+19.8
2. DREXEL	13	58.6	53.8	+4.8
3. HOFSTRA	14	63.0	58.7	+4.3
4. DELAWARE	14	61.4	58.5	+2.9
5. ELON	13	66.7	66.8	-0.2
6. UNCW	13	65.1	67.9	-2.8
7. TOWSON	14	60.8	64.2	-3.4
8. William & Mary	14	58.8	63.6	-4.8
9. NORTHEASTERN	13	60.3	69.7	-9.4
10. Col. of Charleston	13	56.1	67.2	-11.1

FREE THROW PCT	G	FTM	FTA	Pct.
1. DREXEL	13	131	163	.804
2. DELAWARE	14	183	243	.753
3. UNCW	13	158	227	.696
4. JMU	13	186	275	.676
5. HOFSTRA	14	191	286	.668
6. NORTHEASTERN	13	136	205	.663
7. ELON	13	166	251	.661
8. Col. of Charleston	13	125	192	.651
9. William & Mary	14	140	219	.639
10. TOWSON	14	119	189	.630

FIELD GOAL PERCENTAGE	G	FGM	FGA	Pct.
1. JMU	13	361	833	.433
2. ELON	13	304	718	.423
3. UNCW	13	315	773	.408
4. DELAWARE	14	307	767	.400
5. DREXEL	13	285	724	.394
6. HOFSTRA	14	315	814	.387
7. NORTHEASTERN	13	285	740	.385
8. William & Mary	14	312	816	.382
9. Col. of Charleston	13	281	736	.382
10. TOWSON	14	315	835	.377

FIELD GOAL PCT DEFENSE	G	FGM	FGA	Pct.
1. JMU	13	264	751	.352
2. DREXEL	13	254	699	.363
3. HOFSTRA	14	299	807	.371
4. ELON	13	307	777	.395
5. DELAWARE	14	309	782	.395
6. TOWSON	14	319	798	.400
7. William & Mary	14	343	849	.404
8. Col. of Charleston	13	322	769	.419
9. NORTHEASTERN	13	329	776	.424
10. UNCW	13	334	748	.447

3-POINT FG PCT	G	3FGM	3FGA	Pct.
1. JMU	13	86	227	.379
2. ELON	13	93	257	.362
3. DELAWARE	14	62	173	.358
4. UNCW	13	58	163	.356
5. DREXEL	13	61	177	.345
6. NORTHEASTERN	13	78	240	.325
7. TOWSON	14	102	318	.321
8. William & Mary	14	59	202	.292
9. Col. of Charleston	13	42	150	.280
10. HOFSTRA	14	61	225	.271

3-POINT FG PCT DEFENSE	G	3FGM	3FGA	Pct.
1. DREXEL	13	52	202	.257
2. JMU	13	55	178	.309
3. ELON	13	74	232	.319
4. Col. of Charleston	13	85	266	.320
5. HOFSTRA	14	59	179	.330
6. William & Mary	14	66	200	.330
7. DELAWARE	14	74	223	.332
8. TOWSON	14	75	223	.336
9. NORTHEASTERN	13	88	234	.376
10. UNCW	13	74	195	.379

REBOUNDING OFFENSE	G	Rebounds	Avg/G
1. JMU	13	589	45.3
2. HOFSTRA	14	584	41.7
3. ELON	13	496	38.2
4. NORTHEASTERN	13	485	37.3
5. TOWSON	14	520	37.1
6. UNCW	13	475	36.5
7. Col. of Charleston	13	473	36.4
8. DELAWARE	14	508	36.3
9. DREXEL	13	458	35.2
10. William & Mary	14	475	33.9

REBOUNDING DEFENSE	G	Rebounds	Avg/G
1. JMU	13	449	34.5
2. DELAWARE	14	499	35.6
3. HOFSTRA	14	504	36.0
4. UNCW	13	476	36.6
5. DREXEL	13	477	36.7
6. ELON	13	483	37.2
7. NORTHEASTERN	13	500	38.5
8. Col. of Charleston	13	504	38.8
9. TOWSON	14	551	39.4
10. William & Mary	14	620	44.3



2014-15 CAA Women's Basketball
 CONFERENCE BASKETBALL STATISTICS
 Through games of Feb 15, 2015 (Conference games only)



REBOUNDING MARGIN	G	Team	Avg.	Opp.	Avg.	Margin
1.	JMU	13	589	45.3	449	34.5 +10.8
2.	HOFSTRA	14	584	41.7	504	36.0 +5.7
3.	ELON	13	496	38.2	483	37.2 +1.0
4.	DELAWARE	14	508	36.3	499	35.6 +0.6
5.	UNCW	13	475	36.5	476	36.6 -0.1
6.	NORTHEASTERN	13	485	37.3	500	38.5 -1.2
7.	DREXEL	13	458	35.2	477	36.7 -1.5
8.	TOWSON	14	520	37.1	551	39.4 -2.2
9.	Col. of Charleston	13	473	36.4	504	38.8 -2.4
10.	William & Mary	14	475	33.9	620	44.3 -10.4

BLOCKED SHOTS	G	No.	Avg/G
1.	William & Mary	14	68 4.9
2.	JMU	13	59 4.5
3.	ELON	13	52 4.0
4.	TOWSON	14	47 3.4
5.	HOFSTRA	14	43 3.1
6.	DELAWARE	14	42 3.0
7.	DREXEL	13	38 2.9
8.	Col. of Charleston	13	34 2.6
9.	NORTHEASTERN	13	27 2.1
10.	UNCW	13	24 1.8

ASSISTS	G	No.	Avg/G
1.	JMU	13	224 17.2
2.	DREXEL	13	194 14.9
3.	HOFSTRA	14	208 14.9
4.	TOWSON	14	206 14.7
5.	William & Mary	14	205 14.6
6.	ELON	13	172 13.2
7.	NORTHEASTERN	13	171 13.2
8.	DELAWARE	14	169 12.1
9.	UNCW	13	156 12.0
10.	Col. of Charleston	13	139 10.7

STEALS	G	No.	Avg/G
1.	William & Mary	14	159 11.4
2.	DREXEL	13	117 9.0
3.	JMU	13	113 8.7
4.	UNCW	13	104 8.0
5.	HOFSTRA	14	102 7.3
6.	DELAWARE	14	100 7.1
7.	TOWSON	14	97 6.9
8.	Col. of Charleston	13	88 6.8
-8.	ELON	13	88 6.8
10.	NORTHEASTERN	13	74 5.7

TURNOVER MARGIN	G	Team	Avg.	Opp.	Avg.	Margin
1.	JMU	13	183	14.1	231	17.8 +3.7
2.	William & Mary	14	239	17.1	282	20.1 +3.1
3.	DREXEL	13	201	15.5	237	18.2 +2.8
4.	UNCW	13	193	14.8	200	15.4 +0.5
5.	DELAWARE	14	200	14.3	202	14.4 +0.1
6.	TOWSON	14	191	13.6	185	13.2 -0.4
7.	HOFSTRA	14	242	17.3	227	16.2 -1.1
8.	Col. of Charleston	13	234	18.0	204	15.7 -2.3
9.	NORTHEASTERN	13	236	18.2	194	14.9 -3.2
10.	ELON	13	233	17.9	190	14.6 -3.3

ASSIST/TURNOVER RATIO	G	Ast.	Avg.	T/O	Avg.	Ratio
1.	JMU	13	224	17.2	183	14.1 1.2
2.	TOWSON	14	206	14.7	191	13.6 1.1
3.	DREXEL	13	194	14.9	201	15.5 1.0
4.	HOFSTRA	14	208	14.9	242	17.3 0.9
5.	William & Mary	14	205	14.6	239	17.1 0.9
6.	DELAWARE	14	169	12.1	200	14.3 0.8
7.	UNCW	13	156	12.0	193	14.8 0.8
8.	ELON	13	172	13.2	233	17.9 0.7
9.	NORTHEASTERN	13	171	13.2	236	18.2 0.7
10.	Col. of Charleston	13	139	10.7	234	18.0 0.6

OFFENSIVE REBOUNDS	G	No.	Avg/G
1.	JMU	13	210 16.2
2.	HOFSTRA	14	204 14.6
3.	Col. of Charleston	13	166 12.8
4.	TOWSON	14	178 12.7
5.	UNCW	13	162 12.5
6.	NORTHEASTERN	13	158 12.2
-6.	ELON	13	158 12.2
8.	DELAWARE	14	162 11.6
9.	DREXEL	13	145 11.2
10.	William & Mary	14	147 10.5

DEFENSIVE REBOUNDS	G	No.	Avg/G
1.	JMU	13	379 29.2
2.	HOFSTRA	14	380 27.1
3.	ELON	13	338 26.0
4.	NORTHEASTERN	13	327 25.2
5.	DELAWARE	14	346 24.7
6.	TOWSON	14	342 24.4
7.	DREXEL	13	313 24.1
-7.	UNCW	13	313 24.1
9.	Col. of Charleston	13	307 23.6
10.	William & Mary	14	328 23.4

DEFENSIVE REB PCT.	G	D-Reb	Opp. OR	D-Reb%
1.	JMU	13	379	144 .725
2.	HOFSTRA	14	380	162 .701
3.	UNCW	13	313	141 .689
4.	DELAWARE	14	346	167 .674
5.	TOWSON	14	342	173 .664
6.	NORTHEASTERN	13	327	167 .662
7.	ELON	13	338	177 .656
8.	DREXEL	13	313	164 .656
9.	Col. of Charleston	13	307	176 .636
10.	William & Mary	14	328	219 .600

OFFENSIVE REB PCT.	G	O-Reb	Opp. DR	O-Reb%
1.	JMU	13	210	305 .408
2.	HOFSTRA	14	204	342 .374
3.	ELON	13	158	306 .341
4.	Col. of Charleston	13	166	328 .336
5.	DELAWARE	14	162	332 .328
6.	UNCW	13	162	335 .326
7.	NORTHEASTERN	13	158	333 .322
8.	TOWSON	14	178	378 .320
9.	DREXEL	13	145	313 .317
10.	William & Mary	14	147	401 .268



2014-15 CAA Women's Basketball
CONFERENCE BASKETBALL STATISTICS
Through games of Feb 15, 2015 (Conference games only)



3-POINT FG MADE	G	No.	Avg/G
1. TOWSON	14	102	7.3
2. ELON	13	93	7.2
3. JMU	13	86	6.6
4. NORTHEASTERN	13	78	6.0
5. DREXEL	13	61	4.7
6. UNCW	13	58	4.5
7. DELAWARE	14	62	4.4
8. HOFSTRA	14	61	4.4
9. William & Mary	14	59	4.2
10. Col. of Charleston	13	42	3.2



2014-15 CAA Women's Basketball
CONFERENCE BASKETBALL STATISTICS



Through games of Feb 15, 2015 (Conference games only)

Team	Conference	Pct.	PF	PA	Overall	Pct.	PF	PA	Current unbeaten streak
JMU	13-0	1.000	76.5	56.6	13-0	1.000	76.5	56.6	JMU -- 13
DREXEL	9-4	.692	58.6	53.8	9-4	.692	58.6	53.8	HOFSTRA -- 3
HOFSTRA	9-5	.643	63.0	58.7	9-5	.643	63.0	58.7	UNCW -- 2
DELAWARE	8-6	.571	61.4	58.5	8-6	.571	61.4	58.5	DREXEL -- 1
ELON	7-6	.538	66.7	66.8	7-6	.538	66.7	66.8	William & Mary -- 1
UNCW	6-7	.462	65.1	67.9	6-7	.462	65.1	67.9	
TOWSON	6-8	.429	60.8	64.2	6-8	.429	60.8	64.2	
William & Mary	6-8	.429	58.8	63.6	6-8	.429	58.8	63.6	
Col. of Charleston	2-11	.154	56.1	67.2	2-11	.154	56.1	67.2	
NORTHEASTERN	1-12	.077	60.3	69.7	1-12	.077	60.3	69.7	

TEAM SUMMARIES	G	PF-PA	Avg score	Margin	FG-FGA	Pct.	3FG-FGA	Pct.	FT-FTA	Pct.	RebF	RebA	Margin
Col. of Charleston	13	729-873	56.1-67.2	-11.1	281-736	.382	42-150	.280	125-192	.651	473	504	-2.4
DELAWARE	14	859-819	61.4-58.5	+2.9	307-767	.400	62-173	.358	183-243	.753	508	499	+0.6
DREXEL	13	762-700	58.6-53.8	+4.8	285-724	.394	61-177	.345	131-163	.804	458	477	-1.5
ELON	13	867-869	66.7-66.8	-0.2	304-718	.423	93-257	.362	166-251	.661	496	483	+1.0
HOFSTRA	14	882-822	63.0-58.7	+4.3	315-814	.387	61-225	.271	191-286	.668	584	504	+5.7
JMU	13	994-736	76.5-56.6	+19.8	361-833	.433	86-227	.379	186-275	.676	589	449	+10.8
NORTHEASTERN	13	784-906	60.3-69.7	-9.4	285-740	.385	78-240	.325	136-205	.663	485	500	-1.2
TOWSON	14	851-899	60.8-64.2	-3.4	315-835	.377	102-318	.321	119-189	.630	520	551	-2.2
UNCW	13	846-883	65.1-67.9	-2.8	315-773	.408	58-163	.356	158-227	.696	475	476	-0.1
William & Mary	14	823-890	58.8-63.6	-4.8	312-816	.382	59-202	.292	140-219	.639	475	620	-10.4

ATTENDANCE	Home	Average	Away	Average	Neutral	Average	Total	Average
Col. of Charleston	6-2678	446	7-6110	873	0-0	0	13-8788	676
DELAWARE	7-12655	1808	7-7235	1034	0-0	0	14-19890	1421
DREXEL	7-5173	739	6-8497	1416	0-0	0	13-13670	1052
ELON	7-2867	410	6-6148	1025	0-0	0	13-9015	693
HOFSTRA	7-3791	542	7-5189	741	0-0	0	14-8980	641
JMU	6-19119	3186	7-3968	567	0-0	0	13-23087	1776
NORTHEASTERN	6-2034	339	7-4299	614	0-0	0	13-6333	487
TOWSON	8-3873	484	6-5630	938	0-0	0	14-9503	679
UNCW	6-5384	897	7-6209	887	0-0	0	13-11593	892
William & Mary	7-2924	418	7-7213	1030	0-0	0	14-10137	724
Totals	67-60498	903	67-60498	903	0-0	0	134-120996	903



2014-15 CAA Women's Basketball
INDIVIDUAL BASKETBALL STATISTICS
Through games of Feb 15, 2015 (Conference games only)



To be ranked, a player must appear in at least 75.0% of their team's games.

SCORING							REBOUNDING						
	Cl	G	FG	3FG	FT	Pts Avg/G		Cl	G	Off	Def	Total	Avg/G
1. Hall, Precious-JMU	Jr	13	83	41	30	237 18.2	1. Hines-Allen, LaTorri-Towson	Sr	14	45	93	138	9.9
2. Hines-Allen, LaTorri-Towson	Sr	14	89	0	53	231 16.5	2. Durant, Ashunae-Hofstra	Fr	12	53	54	107	8.9
3. Atkins, Kelva-UNCW	Sr	13	71	16	55	213 16.4	3. Okafor, Lauren-JMU	Sr	13	49	66	115	8.8
4. Brown, Erika-Delaware	So	14	74	13	61	222 15.9	4. Edeferioka, Elo-Hofstra	So	14	47	71	118	8.4
5. Bolden, Breanna-COFC	So	13	77	5	43	202 15.5	5. DeFreese, Samantha-NU	Jr	13	26	75	101	7.8
6. DeFreese, Samantha-NU	Jr	13	81	5	32	199 15.3	6. Jardine, Hannah-Delaware	So	14	20	87	107	7.6
7. Okafor, Lauren-JMU	Sr	13	71	0	52	194 14.9	7. Teague, Naqaiyyah-UNCW	So	13	30	66	96	7.4
8. Loftus, Kelly-Hofstra	So	13	54	35	36	179 13.8	8. Bolden, Breanna-COFC	So	13	34	61	95	7.3
9. Green, Courtni-Delaware	Jr	14	61	26	41	189 13.5	9. Sally, Francesca-NU	So	13	27	60	87	6.7
10. Johnson, Dominique-Towson	Jr	14	63	35	27	188 13.4	10. Webb, Ciara-Towson	Sr	14	31	60	91	6.5
11. Durant, Ashunae-Hofstra	Fr	12	56	0	37	149 12.4	11. Masaquel, Alexandra-WM	So	13	27	56	83	6.4
12. Pearson, Rachel-Drexel	Jr	13	57	36	10	160 12.3	12. Thompson, Jamila-Drexel	Sr	13	25	57	82	6.3
13. Jardine, Hannah-Delaware	So	14	64	22	20	170 12.1	13. Coffey, Sam-ELON	Sr	13	22	59	81	6.2
14. Moblely, Brie-UNCW	So	13	61	0	28	150 11.5	14. Caracciolo, Joy-Delaware	Sr	14	33	48	81	5.8
15. Boone, Jazmen-WM	Sr	14	53	1	46	153 10.9	15. Giggetts, Toia-JMU	Sr	13	19	56	75	5.8
16. Webb, Ciara-Towson	Sr	14	55	33	9	152 10.9	-15. Curran, Sarah-Drexel	So	13	25	50	75	5.8
17. Mark, A'lece-NU	Sr	12	44	21	20	129 10.8	17. Flowers, Ryan-UNCW	So	13	30	43	73	5.6
18. Stephenson, Zora-ELON	Sr	13	47	37	8	139 10.7	18. Hall, Precious-JMU	Jr	13	14	57	71	5.5
19. Cole, Shatia-UNCW	Jr	13	51	12	22	136 10.5	19. Nicholas, Makeda-Delaware	Fr	14	20	56	76	5.4
20. Luna-Castro, Jackie-COFC	Jr	13	54	6	21	135 10.4	20. Burnett, Shay-ELON	Fr	13	19	51	70	5.4
-20. Curran, Sarah-Drexel	So	13	55	6	19	135 10.4	-20. Johnson, Malaya-ELON	Fr	13	22	48	70	5.4

FIELD GOAL PCT					
	Cl	G	FGM	FGA	Pct.
1. Okafor, Lauren-JMU	Sr	13	71	121	.587
2. Johnson, Malaya-ELON	Fr	13	40	75	.533
3. DeFreese, Samantha-NU	Jr	13	81	152	.533
4. Caracciolo, Joy-Delaware	Sr	14	49	95	.516
5. Durant, Ashunae-Hofstra	Fr	12	56	114	.491
6. White, Anjie-Hofstra	So	13	50	102	.490
7. Luna-Castro, Jackie-COFC	Jr	13	54	111	.486
8. Giggetts, Toia-JMU	Sr	13	46	97	.474
9. Rendle, Abby-WM	Fr	13	52	110	.473
10. Thompson, Jamila-Drexel	Sr	13	40	85	.471
11. Masaquel, Alexandra-WM	So	13	48	104	.462
12. Teague, Naqaiyyah-UNCW	So	13	39	86	.453
13. Jardine, Hannah-Delaware	So	14	64	143	.448
14. Baucom, Essence-ELON	So	12	37	83	.446
15. Rhodes, Jenifer-ELON	So	12	41	94	.436

ASSISTS				
	Cl	G	No.	Avg/G
1. Mickens, Angela-JMU	Jr	13	103	7.9
2. Faulk, Darius-Hofstra	Jr	14	73	5.2
3. Hughey, Breonn-Towson	Fr	12	57	4.8
4. Mercier, Amencie-NU	Sr	13	59	4.5
5. Luciano, Krystal-Hofstra	So	14	60	4.3
6. Baucom, Essence-ELON	So	12	51	4.3
7. Thompson, Jamila-Drexel	Sr	13	54	4.2
8. Atkins, Kelva-UNCW	Sr	13	48	3.7
-8. Brown, Shiclasia-COFC	Fr	13	48	3.7
10. Burnett, Shay-ELON	Fr	13	42	3.2
11. Green, Jenna-WM	Fr	14	45	3.2
12. Johnson, Dominique-Towson	Fr	14	44	3.1
13. Hunter, Latrice-WM	So	14	40	2.9
14. Salyer, Jodi-Delaware	So	13	37	2.8
15. Boone, Jazmen-WM	Sr	14	39	2.8

FREE THROW PCT					
	Cl	G	FTM	FTA	Pct.
1. Smith, Alexis-Drexel	So	13	26	29	.897
2. Green, Courtni-Delaware	Jr	14	41	47	.872
3. Bolden, Breanna-COFC	So	13	43	52	.827
4. Loftus, Kelly-Hofstra	So	13	36	44	.818
5. Atkins, Kelva-UNCW	Sr	13	55	70	.786
6. Brown, Erika-Delaware	So	14	61	78	.782
7. Moblely, Brie-UNCW	So	13	28	36	.778
8. Boone, Jazmen-WM	Sr	14	46	62	.742
9. Johnson, Malaya-ELON	Fr	13	30	42	.714
10. Okafor, Lauren-JMU	Sr	13	52	77	.675
11. Caracciolo, Joy-Delaware	Sr	14	31	46	.674
12. Hines-Allen, LaTorri-Towson	Sr	14	53	79	.671
13. Mickens, Angela-JMU	Jr	13	30	45	.667
-13. Hall, Precious-JMU	Jr	13	30	45	.667
15. Durant, Ashunae-Hofstra	Fr	12	37	56	.661

STEALS				
	Cl	G	No.	Avg/G
1. Bolden, Breanna-COFC	So	13	39	3.0
2. Masaquel, Alexandra-WM	So	13	36	2.8
3. Mickens, Angela-JMU	Jr	13	34	2.6
4. Boone, Jazmen-WM	Sr	14	36	2.6
5. Brown, Erika-Delaware	So	14	27	1.9
6. Atkins, Kelva-UNCW	Sr	13	25	1.9
7. Faulk, Darius-Hofstra	Jr	14	26	1.9
8. Webb, Ciara-Towson	Sr	14	25	1.8
9. Hall, Precious-JMU	Jr	13	21	1.6
10. Tremba, Marlena-WM	So	14	22	1.6
11. Teague, Naqaiyyah-UNCW	So	13	20	1.5
-11. Mercier, Amencie-NU	Sr	13	20	1.5
13. Pearson, Rachel-Drexel	Jr	13	19	1.5
-13. Moblely, Brie-UNCW	So	13	19	1.5
15. Luciano, Krystal-Hofstra	So	14	20	1.4



2014-15 CAA Women's Basketball
INDIVIDUAL BASKETBALL STATISTICS



Through games of Feb 15, 2015 (Conference games only)

3-POINT FG PCT	Cl	G	3FG	FGA	Pct.
1. Steele, Jasmine-UNCW	So	11	14	31	.452
2. Hall, Precious-JMU	Jr	13	41	95	.432
3. Pearson, Rachel-Drexel	Jr	13	36	86	.419
4. Barron, Hailee-JMU	Fr	13	14	34	.412
5. Jardine, Hannah-Delaware	So	14	22	55	.400
6. Stephenson, Zora-ELON	Sr	13	37	93	.398
7. Johnson, Dominique-Towson	Jr	14	35	94	.372
8. Brown, Lauren-ELON	So	13	23	63	.365
9. Atkins, Kelva-UNCW	Sr	13	16	45	.356
10. Mark, A'lece-NU	Sr	12	21	60	.350
11. Taggart, Maureen-NU	Fr	13	22	63	.349
12. Coffey, Sam-ELON	Sr	13	18	52	.346
13. Gwathmey, Jazmon-JMU	Jr	13	13	39	.333
14. Hall, Erin-COFC	Sr	13	24	74	.324
15. Green, Courtney-Delaware	Jr	14	26	81	.321

3-POINT FG MADE	Cl	G	3FG	Avg/G
1. Hall, Precious-JMU	Jr	13	41	3.2
2. Stephenson, Zora-ELON	Sr	13	37	2.8
3. Pearson, Rachel-Drexel	Jr	13	36	2.8
4. Loftus, Kelly-Hofstra	So	13	35	2.7
5. Johnson, Dominique-Towson	Jr	14	35	2.5
6. Webb, Ciara-Towson	Sr	14	33	2.4
7. Tremba, Marlana-WM	So	14	29	2.1
8. Green, Courtney-Delaware	Jr	14	26	1.9
9. Hall, Erin-COFC	Sr	13	24	1.8
10. Brown, Lauren-ELON	So	13	23	1.8
11. Mark, A'lece-NU	Sr	12	21	1.8
12. Taggart, Maureen-NU	Fr	13	22	1.7
13. Jardine, Hannah-Delaware	So	14	22	1.6
14. Coffey, Sam-ELON	Sr	13	18	1.4
15. Mercier, Amencie-NU	Sr	13	17	1.3

BLOCKED SHOTS	Cl	G	No.	Avg/G
1. Rendle, Abby-WM	Fr	13	30	2.3
2. Okafor, Lauren-JMU	Sr	13	27	2.1
3. Luna-Castro, Jackie-COFC	Jr	13	25	1.9
4. Thompson, Jamila-Drexel	Sr	13	20	1.5
5. Johnson, Malaya-ELON	Fr	13	19	1.5
6. White, Anjie-Hofstra	So	13	17	1.3
7. Hines-Allen, LaTorri-Towson	Sr	14	18	1.3
8. Nicholas, Makeda-Delaware	Fr	14	17	1.2
9. Rhodes, Jenifer-ELON	So	12	12	1.0
10. Masaquel, Alexandra-WM	So	13	12	0.9

ASSIST/TURNOVER RATIO	Cl	G	Ast.	T/O	Ratio
1. Mickens, Angela-JMU	Jr	13	103	32	3.2
2. Hughey, Breonn-Towson	Fr	12	57	26	2.2
3. Salyer, Jodi-Delaware	So	13	37	19	1.9
4. Hunter, Latrice-WM	So	14	40	21	1.9
5. Baucom, Essence-ELON	So	12	51	27	1.9
6. Luciano, Krystal-Hofstra	So	14	60	33	1.8
7. Faulk, Darius-Hofstra	Jr	14	73	45	1.6
8. Johnson, Dominique-Towson	Jr	14	44	29	1.5
9. Teague, Naqaiyyah-UNCW	So	13	34	24	1.4
10. Mercier, Amencie-NU	Sr	13	59	42	1.4
11. Thompson, Jamila-Drexel	Sr	13	54	42	1.3
12. Green, Jenna-WM	Fr	14	45	38	1.2
13. Burnett, Shay-ELON	Fr	13	42	41	1.0
14. Atkins, Kelva-UNCW	Sr	13	48	48	1.0
15. Boone, Jazmen-WM	Sr	14	39	40	1.0

OFFENSIVE REBOUNDS	Cl	G	No.	Avg/G
1. Durant, Ashunae-Hofstra	Fr	12	53	4.4
2. Okafor, Lauren-JMU	Sr	13	49	3.8
3. Edeferioka, Elo-Hofstra	So	14	47	3.4
4. Hines-Allen, LaTorri-Towson	Sr	14	45	3.2
5. Bolden, Breanna-COFC	So	13	34	2.6
6. Caracciolo, Joy-Delaware	Sr	14	33	2.4
7. Rhodes, Jenifer-ELON	So	12	28	2.3
8. Flowers, Ryan-UNCW	So	13	30	2.3
-8. Teague, Naqaiyyah-UNCW	So	13	30	2.3
10. Webb, Ciara-Towson	Sr	14	31	2.2
11. Griffin, Da'Lishia-JMU	So	10	21	2.1
12. Sally, Francesca-NU	So	13	27	2.1
-12. Masaquel, Alexandra-WM	So	13	27	2.1
-12. White, Anjie-Hofstra	So	13	27	2.1
15. Boone, Jazmen-WM	Sr	14	29	2.1

DEFENSIVE REBOUNDS	Cl	G	No.	Avg/G
1. Hines-Allen, LaTorri-Towson	Sr	14	93	6.6
2. Jardine, Hannah-Delaware	So	14	87	6.2
3. DeFreese, Samantha-NU	Jr	13	75	5.8
4. Okafor, Lauren-JMU	Sr	13	66	5.1
-4. Teague, Naqaiyyah-UNCW	So	13	66	5.1
6. Edeferioka, Elo-Hofstra	So	14	71	5.1
7. Bolden, Breanna-COFC	So	13	61	4.7
8. Sally, Francesca-NU	So	13	60	4.6
9. Coffey, Sam-ELON	Sr	13	59	4.5
10. Durant, Ashunae-Hofstra	Fr	12	54	4.5
11. Hall, Precious-JMU	Jr	13	57	4.4
-11. Thompson, Jamila-Drexel	Sr	13	57	4.4
13. Masaquel, Alexandra-WM	So	13	56	4.3
-13. Giggetts, Toia-JMU	Sr	13	56	4.3
15. Webb, Ciara-Towson	Sr	14	60	4.3

MINUTES PLAYED	Cl	G	No.	Avg/G
1. Mercier, Amencie-NU	Sr	13	523	40.2
2. Pearson, Rachel-Drexel	Jr	13	507	39.0
3. Hines-Allen, LaTorri-Towson	Sr	14	518	37.0
4. Bolden, Breanna-COFC	So	13	458	35.2
5. Tremba, Marlana-WM	So	14	488	34.9
6. Curran, Sarah-Drexel	So	13	440	33.8
7. Jardine, Hannah-Delaware	So	14	473	33.8
-7. Brown, Erika-Delaware	So	14	473	33.8
9. Green, Courtney-Delaware	Jr	14	465	33.2
10. Mickens, Angela-JMU	Jr	13	431	33.2