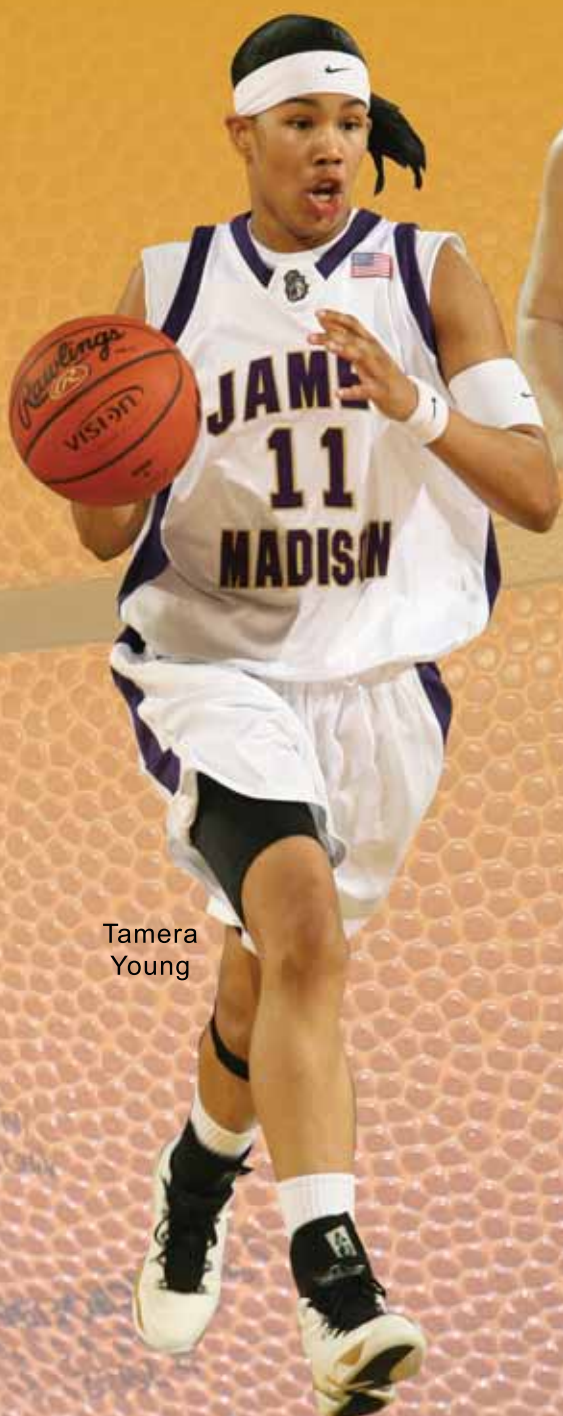


# CAA *WOMEN'S* BASKETBALL

## 2007-08 Preview



Tamera Young



Kyra Kaylor



TJ Jordan



**RETURNING TALENT:**

Seven of the 15 members from last year's All-CAA teams will return for the 2007-08 season. Three of the five first-team honorees are back: Old Dominion's T.J. Jordan, William & Mary's Kyra Kaylor and James Madison's Tamera Young.



**Tamera Young**

**TOP STATISTICAL LEADERS RETURN:**

The CAA should be loaded once again as the conference welcomes back 13 of its top 20 scorers from last season. Also back are 12 of the CAA's top 20 in rebounding and 10 of the top 15 in assists and steals.



**ODU CAPTURES 16TH STRAIGHT CAA TITLE:**

Old Dominion edged James Madison 78-70 in another thrilling title game to capture its NCAA record 16th consecutive CAA championship. The Lady Monarchs have never lost a CAA Tournament game since

joining the league back in 1991-92. With the win, ODU advanced to its 24th NCAA Tournament, which ranks as the third-most appearances in Division I behind only Tennessee and Louisiana Tech. The Lady Monarchs have won 20 or more games during all 16 seasons as a CAA member.



**CAA MAKING HISTORY:**

For the first time in CAA history, three women's basketball teams advanced to the 2007 NCAA Women's Basketball Tournament. Old Dominion, which earned the CAA's automatic bid, was joined by James Madison and Delaware in the field of 64. Hofstra represented the CAA in the Women's National Invitation Tournament, which marked the third straight season the CAA had four women's basketball teams advance to postseason play. The Lady Monarchs made their 16th straight appearance in the NCAA Tournament and 24th overall. James Madison made its seventh NCAA appearance, but first since 1996--the last time the CAA had more than one team in the NCAA Women's Tournament. Delaware made its second trip to the "Big Dance" which was its first since winning the America East automatic bid in 2002. Hofstra made its second straight appearance in the WNIT. Hofstra advanced to the quarterfinals of the WNIT with wins over Seton Hall and South Carolina. The Pride fell to Western Kentucky, 72-54, in the quarterfinals.



**CAA NO. 9 IN FINAL RPI RANKING:**

The CAA was ranked ninth among the nations Division I conferences in the final NCAA RPI. Old Dominion led the CAA ranked #23, while James Madison followed at #26. Delaware was ranked #34 and Hofstra closed out the four CAA women's basketball teams in the top 48 at #48.

<b>Final Conference RPI Ratings</b>	1. SEC	<b>Final Team RPI Ratings</b>	23. Old Dominion
	2. Big 12		26. James Madison
	3. ACC		34. Delaware
	4. Big Ten		48. Hofstra
	5. Big East		120. William & Mary
	6. Pac-10		132. VCU
	7. Mountain West		146. Towson
	8. Sun Belt		178. Georgia State
	9. CAA		206. Drexel
	10. Atlantic 10		227. George Mason
	234. UNC Wilmington		
	257. Northeastern		

t.j.  
**JORDAN**



**HOME SWEET HOME:** James Madison completed the regular season with an impressive 13-0 mark at home. The Dukes extended their home court winning streak to 26 games, which is the longest current home winning streak in the nation. The streak dates back to the 2005-06 season, when the Dukes also posted a 13-0 record at home.

Div. I Home Court Winning Streaks		
1.	<b>James Madison</b>	<b>26</b>
2.	Belmont	23
	Marist	23
4.	Coppin State	20
5.	Texas A&M	18
6.	Duke	16
7.	George Washington	14
8.	Middle Tennessee	13
	Wisc.-Green Bay	13
9.	Hartford	11

**HIT THE ROAD AGAIN:** Hofstra stood among the top with 13 true road wins in 2006-07. The Pride tied two other Division I women's basketball teams, including Tennessee and Coppin State.

gabriela  
**MARGINNEAN**



**EIGHT STRONG:** Eight CAA women's basketball teams finished the 2006-07 season with a winning record for the first time in conference history. Four teams completed the season with single-digit losses.

**FOUR TEAMS WITH AT LEAST 24 WINS:** For the first time in CAA women's history, four teams recorded 24 or more wins last season. James Madison completed the season with a 27-6 mark, Delaware finished with a 26-6 record, Old Dominion went 24-9, while Hofstra wrapped the season up with a 26-8 record.

**TV EXPOSURE:** CAA women's basketball increased its television exposure with 17 games on the air last season. All 12 teams made at least one television appearance.

kyra  
**KAYLOR**



**2007-08 DEAL WITH THE AMERICA CHANNEL:**



Colonial Athletic Association Commissioner Tom Yeager announced that the league has entered into an agreement with The America Channel, which will provide live television coverage of a minimum of 18 women's basketball games and several other CAA Championships beginning in the 2007-08 academic year. The America Channel® is a new programming network that will explore and celebrate our communities, campuses, real heroes, and ordinary people who accomplish the extraordinary. The America Channel's SportsLife™ initiative merges life and sport – combining broadcast of over 200 NCAA sports games and matches, with real-life drama about the aspirations, achievements, challenges, adventures, community service, and lifestyles of students and student athletes from numerous NCAA conferences.

krystal  
**VAUGHN**



**MAJORITY OF STARTERS RETURN:** CAA teams return 55% (33-of-60) of their starting line-ups from a season ago. Drexel, George Mason, Northeastern, Towson and William & Mary only lost one starter from the 2006-07 season. UNC Wilmington and VCU, which both had all five starters back a year ago, return three starters this season.

**TOP 10 IN THE NATION:** Old Dominion's T.J. Jordan averaged 3.1 three-point field goals per game which ranked her fourth nationally at the completion of the 2006-07 season. Georgia State's Brittany Hollins finished the season ranked fifth in steals, averaging 3.3 per outing.



## 2006-07 CAA WOMEN'S BASKETBALL FINAL REPORT CAA STANDINGS (FINAL)

	CAA			Overall						
	W	L	Pct.	W	L	Pct.	H	A	N	
Old Dominion	17	1	.944	24	9	.727	13-2	8-6	3-1	L1
James Madison	16	2	.889	27	6	.818	13-0	12-4	2-2	L1
Delaware	16	2	.889	26	6	.812	13-1	11-5	1-1	L1
Hofstra	13	5	.722	26	8	.765	12-2	13-5	1-1	L1
William & Mary	10	8	.556	19	12	.613	10-3	8-8	1-1	L1
VCU	9	9	.500	17	13	.567	9-4	7-8	1-1	L1
Towson	8	10	.444	17	12	.586	9-4	8-7	0-1	L2
Georgia State	7	11	.389	15	15	.500	8-5	5-9	2-1	L6
Drexel	4	14	.222	10	21	.323	5-9	4-11	1-1	L1
UNC Wilmington	3	15	.167	8	23	.258	4-10	3-12	1-1	L1
Northeastern	3	15	.167	4	26	.133	3-10	1-14	0-2	L5
George Mason	2	16	.111	8	21	.276	3-10	4-10	1-1	L11

**Player of the Year:** Meredith Alexis, JMU  
**Coach of the Year:** Kenny Brooks, JMU  
**Rookie of the Year:** Gabriela Marginean, Drexel  
**Def. Player of the Year:** Tyresa Smith, Delaware

#### First Team All-CAA

Meredith Alexis, Sr., C, James Madison  
 T.J. Jordan, Jr., G, Old Dominion  
 Kyra Kaylor, Jr., F, William & Mary  
 Tyresa Smith, Sr., G, Delaware  
 Tamera Young, Jr., G, James Madison

#### Second Team All-CAA

Vanessa Gidden, Sr., C, Hofstra  
 Quanitra Hollingsworth, So., C, VCU  
 Cigi McCollin, Sr., G, Hofstra  
 Kelcey Roegiers-Jensen, Sr., G, Georgia State  
 Krystal Vaughn, Jr., F, VCU

#### Third Team All-CAA

Andrea Benvenuto, Sr., G, James Madison  
 Lori Drake, Sr., G, UNC Wilmington  
 Chrissy Fisher, Sr., F, Delaware  
 Gabriela Marginean, Fr., F, Drexel  
 Shaleyse Smallwood, Jr., G, Northeastern

#### CAA All-Rookie Team

Shanae Baker-Brice, Fr., G, Towson  
 Tiffany Benson, Fr., F, William & Mary  
 Sam Brigham, Fr., G, Hofstra  
 Tabitha David, Fr., F, Georgia State  
 Gabriela Marginean, Fr., F, Drexel

#### CAA All-Defensive Team

Kyle DeHaven, Jr., G, Delaware  
 Marcquitta Head, So., C, Georgia State  
 Brittany Hollins, So., G, Georgia State  
 Shirley McCall, Sr., G/F, James Madison  
 Tyresa Smith, Sr., G, Delaware

#### CAA STATISTICAL LEADERS

##### Scoring

1. Tyresa Smith, DEL	19.8
2. Meredith Alexis, JMU	18.4
3. K. Roegiers-Jensen, GSU	18.0
4. Gabriela Marginean, DREX	16.6
5. Tamera Young, JMU	15.6

##### Rebounding

1. Meredith Alexis, JMU	11.6
2. Q. Hollingsworth, VCU	9.4
3. Kyra Kaylor, W&M	9.1
4. Stefanie Hodell, NU	8.8
5. Lizanne Murphy, HOF	8.7

##### FG % (Min. 4 made per game)

1. Marcquitta Head, GSU	54.8%
2. Q. Hollingsworth, VCU	53.2%
3. Meredith Alexis, JMU	52.9%
4. Lana Harshaw, HOF	47.0%
5. Krystal Vaughn, VCU	46.9%

##### FT % (Min. 2 made per game)

1. Ashlee Feldman, NU	90.2%
2. Lesley Dickinson, JMU	87.8%
3. G. Marginean, DREX	85.8%
4. K. Roegiers-Jensen, GSU	82.2%
5. Cigi McCollin, HOF	80.2%

##### Assists

1. Andrea Benvenuto, JMU	6.67
2. K. Roegiers-Jensen, GSU	6.57
3. Brittany Hollins, GSU	5.23
4. Shaleyse Smallwood, NU	4.12
5. LaKea Jones, VCU	3.97

##### Steals

1. Brittany Hollins, GSU	3.27
2. Kyle DeHaven, DEL	3.09
3. Holly Mahan, TOW	2.86
4. S. Baker-Brice, TOW	2.62
5. Tyresa Smith, DEL	2.56

##### Blocks

1. Marcquitta Head, GSU	2.23
2. Tiffany Benson, W&M	2.16
3. Q. Hollingsworth, VCU	1.28
4. Vanessa Gidden, HOF	1.26
5. Tamara Ransburg, ODU	1.03

#### CAA WOMEN'S BASKETBALL CHAMPIONSHIP Bob Carpenter Center - Newark, Del.

##### March 8, 2007 - CAA Opening Rounds

#9 Drexel 73 d. #8 Georgia State 62  
 #5 William & Mary 79 d. #12 George Mason 69  
 #6 VCU 74 d. #11 Northeastern 58  
 #10 UNC Wilmington 55 d. #7 Towson 41

##### March 9, 2007 - CAA Quarterfinals

#1 Old Dominion 66 d. #9 Drexel 55  
 #4 Hofstra 71 d. #5 William & Mary 46  
 #3 Delaware 79 d. #6 VCU 58  
 #2 James Madison 73 d. #10 UNCW 43

##### March 10, 2007 - CAA Semifinals

#1 Old Dominion 79 d. #4 Hofstra 59  
 #2 James Madison 67 d. #3 Delaware 56

##### March 11, 2007 - CAA Championship

#1 Old Dominion 78 d. #2 James Madison 70

#### NCAA WOMEN'S BASKETBALL CHAMPIONSHIP

##### SATURDAY, MARCH 17

##### Fresno Regional - Stanford, Calif.

#10 Florida State 85 d. #7 Old Dominion 75

##### SUNDAY, MARCH 18

##### Greensboro Regional - East Lansing, Mich.

#5 Michigan State 69 d. #12 Delaware 58

##### Dayton Regional - Pittsburgh, Pa.

#8 Pittsburgh 71 d. #9 James Madison 61

#### WOMEN'S NIT

##### March 17 - Second Round

Hofstra 64 d. Seton Hall 52

##### March 21 - Third Round

Hofstra 64 d. South Carolina 59

##### March 25 - Quarterfinals

Western Kentucky 72 d. Hofstra 54

# Returning Statistical Leaders

## Top Returning Scorers

Gabriela Marginean, Drexel	So.	F	16.6 ppg
Tamera Young, James Madison	Sr.	G	16.5 ppg
Shaleyse Smallwood, NU	Sr.	G	16.0 ppg
Krystal Vaughn, VCU	Sr.	F	15.6 ppg
Kyra Kaylor, William & Mary	Sr.	F	14.8 ppg
T.J. Jordan, Old Dominion	Sr.	G	14.5 ppg
Shanae Baker-Brice, Towson	So.	G	13.7 ppg
Quanitra Hollingsworth, VCU	Jr.	C	13.7 ppg
Lucia Pablos, Northeastern	Sr.	G	13.5 ppg
Lateisha Wade, George Mason	Sr.	G	13.1 ppg
Devin James, William & Mary	Sr.	G/F	12.7 ppg
Ashlee Feldman, Northeastern	Jr.	G	12.7 ppg
Narissa Suber, Drexel	Sr.	G	12.5 ppg



**Gabriela Marginean**

## Top Returners In Assists

Brittany Hollins, Georgia State	Jr.	G	5.2 apg
Shaleyse Smallwood, NU	Sr.	G	4.1 apg
LaKea Jones, VCU	Sr.	G	4.0 apg
Alis Freeman, Towson	Jr.	G	3.8 apg
Niki Williams, Hofstra	Jr.	G	3.6 apg
Lucia Pablos, Northeastern	Sr.	G	3.4 apg
Kyle DeHaven, Delaware	Jr.	G	3.3 apg
Shanae Baker-Brice, Towson	So.	G	3.1 apg
Shade Smith, UNCW	So.	G	3.1 apg
Jazzmin Walters, Old Dominion	Jr.	G	3.1 apg



**Brittany Hollins**

## Top Returners In Three-Pointers Made

TJ Jordan, Old Dominion	Sr.	G	101
Narissa Suber, Drexel	Sr.	G	83
Ashlee Feldman, Northeastern	Jr.	G	72
Tamera Young, James Madison	Sr.	G	47
Casey Quigley, George Mason	Sr.	G	42
Anora Suber, Drexel	Sr.	G	38
Courtney Portell, William & Mary	Jr.	G	37

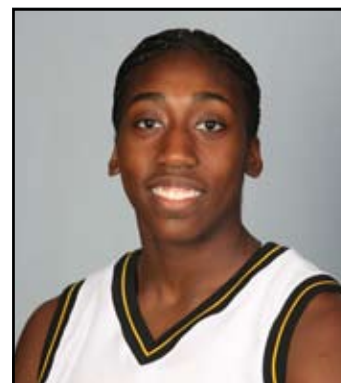


**TJ Jordan**

# Returning Statistical Leaders

## Top Returners In Rebounding

Quanitra Hollingsworth, VCU	Jr.	C	9.4 rpg
Kyra Kaylor, William & Mary	Sr.	F	9.1 rpg
Stephanie Hodell, Northeastern	Sr.	F	8.8 rpg
Gabriela Marginean, Drexel	So.	F	8.2 rpg
Tamera Young, James Madison	Sr.	G	8.0 rpg
Holly Mahan, Towson	Sr.	G	7.4 rpg
Krystal Vaughn, VCU	Sr.	F	6.8 rpg
Devin James, William & Mary	Sr.	G/F	6.7 rpg
Moni Akintunde, George Mason	Sr.	F	6.5 rpg
Danyiell McKeller, Georgia State	So.	F/G	6.3rpg
Sasha Taylor, UNCW	Jr.	G/F	6.2 rpg
RaShay Rawls, Georgia State	So.	F/C	6.1 rpg



**Quanitra Hollingsworth**

## Top Returners In Steals

Brittany Hollins, Georgia State	Jr.	G	3.3 spg
Kyle DeHaven, Delaware	Jr.	G	3.1 spg
Holly Mahan, Towson	Sr.	G	2.9 spg
Shanae Baker-Brice, Towson	So.	G/F	2.6 spg
Alis Freeman, Towson	Jr.	G	2.4 spg
Niki Williams, Hofstra	Jr.	G	2.1 spg
Tamera Young, James Madison	Sr.	G	2.1 spg
Kyra Kaylor, William & Mary	Sr.	G	1.9 spg
Stephanie Hodell, Northeastern	Sr.	F	1.8 spg
Jazzmin Walters, Old Dominion	Jr.	G	1.8 spg



**Brittany Hollins**

## Top Returners In Blocked Shots

Tiffany Benson, William & Mary	So.	F	2.2 bpg
Quanitra Hollingsworth, VCU	Jr.	C	1.3 bpg
Tamara Ransburg, Old Dominion	RSr.	C/F	1.0 bpg
Farrah Ferguson, Delaware	RSo	C	1.0 bpg
Alex Stewart, UNCW	So.	F	1.0 bpg
Tiffany Green, Old Dominion	RJr.	F	0.9 bpg
Kandace Davis, Towson	So.	F	0.8 bpg
Kyra Kaylor, William & Mary	Sr.	F	0.8 bpg
Kim Carr, Northeastern	So.	F	0.8 bpg
Vatai Smith, Georgia State	Sr.	F/C	0.8 bpg
Sahsha Taylor, UNCW	Jr.	G/F	0.7 bpg



**Tiffany Benson**

# CAA TEAM NOTES

## DELAWARE



Delaware posted a 26-6 record last season, which was its seventh 20-win campaign in the past eight years. The Blue Hens earned a berth in the NCAA Tournament, which was their sixth post-season appearance since 2001.

Senior guard Kyle DeHaven, who made the CAA All-Defensive team a year ago, led the Blue Hens in steals (3.09 spg) and assists (3.1 apg) last season. The senior also contributed 8.5 points per game.

The Blue Hens will host Delaware State in the first round of the 2007 Preseason Women's National Invitation Tournament on Nov. 9. Second-round games will be played on Nov. 11-13, semifinals will be on Nov. 14-15 and the championship is scheduled for Sunday, Nov. 18.

## DREXEL



Head coach Denise Dillon returns 13 letterwinners, including starters Narissa Suber, Andrea Peterson, Anora Suber and Gabriela Marginean.

Narissa Suber already owns the Drexel records for three-pointers made in a game (8 - tie), season (87) and career (243). The senior is on pace to become the conference's all-time 3-point leader.

Marginean earned CAA Rookie of the Year honors after averaging 16.6 points and 8.2 rebounds per game in her first season with the Dragons. The sophomore is the CAA's top returning scorer for the 2007-08 season.

## GEORGE MASON



Head coach Debbie Taneyhill has high expectations for the 2007-08 squad as the Patriots return four starters led by junior guards Lateisha Wade and Casey Quigley and junior forwards Moni Akintunde and Jessica Smith.

Wade led the Patriots in scoring, assists and steals as a sophomore. She averaged 13.1 points per game and led the team in scoring 15 times last season. The junior guard handed out 70 assists and completed 44 thefts.

Akintunde grabbed a team best 6.5 rebounds per outing and led the Patriots in 13 games in the same category. The junior also contributed 9.3 points per game.

## GEORGIA STATE



Eight letterwinners are back for a Georgia State squad that was 15-15 overall last year. Head coach Lea Henry welcomes back two starters, junior guard Brittany Hollins and sophomore forward Danyiell McKeller.

Hollins posted 10.1 points per game, dished out 157 assists and made a league-high 98 steals to secure a spot on the CAA All-Defensive team last season. She ranked fifth in Division I with 3.3 steals per outing and is the CAA's top returning player in that category.

McKeller is among the returning league leaders in rebounds after grabbing 6.3 per game as a freshman. The sophomore forward recorded game high rebounds for the Panthers in nine outings last season.

## HOFSTRA



Hofstra is coming off its most successful season in school history posting a 26-8 record and earning its second straight trip to the WNIT. The Pride advanced to the quarterfinals of the WNIT with victories over Seton Hall and South Carolina.

Head coach Krista Kilburn-Stevesky welcomes back seven letterwinners led by junior guard Niki Williams and sophomore guard Sam Brigham. Williams, the lone returning starter, contributed 4.6 points, 3.4 rebounds and 3.6 assists per game. Brigham, who earned CAA All-Rookie honors, averaged 4.4 points per game.

Hofstra could challenge six teams in the regular season that advanced to the NCAA Tournament, including two that moved on to the Sweet 16. The Pride may face Harvard at the Dead River Company Classic, as well as Florida State and Georgia at the FIU Sun and Fun Classic. Hofstra will also face Delaware, James Madison and Old Dominion in CAA action.

## JAMES MADISON



James Madison is coming off of a 27-6 season and made its first trip to the NCAA Tournament since 1996. The Dukes have advanced to the NCAA Tournament seven times in school history.

Head coach Kenny Brooks, who garnered CAA Coach of the Year, returns first team All-CAA selection senior guard Tamera Young. The Dukes only returning starter averaged 16.5 points and eight rebounds per game last season and also led the team in steals with 68.

JMU currently owns the longest home court winning streak in the nation at 26 games. The Dukes posted a perfect 13-0 mark at home in the last two seasons (2005-07).

# CAA TEAM NOTES

UNC WILMINGTON



Head coach Ann Hancock returns six letterwinners, including three starters, and welcomes five newcomers to this year's squad.

Junior forward Sahsha Taylor leads the returning Seahawks after averaging 12.4 points and 6.2 rebounds per game. She led the the squad in scoring in nine games.

Redshirt sophomore Candace Walker returns to the court after missing the 2006-07 season due to an injury. In 28 games played as a freshman she averaged 6.6 points and 4.9 rebounds.

NORTHEASTERN



The Huskies return four starters, led by three double-digit scoring leaders. Senior guards Shaleyse Smallwood (16.0 ppg) and Lucia Pablos (13.5 ppg) will be joined by junior guard Ashlee Feldman (12.7 ppg).

Northeastern head coach Daynia La-Force Mann, who will be entering her second season at the helm of the Huskies, will introduce six newcomers to eight letterwinners.

Feldman led the conference in free throw shooting (90.2%) for the second consecutive season. She also ranked third in the CAA in 3-pointers made (72) in 2006-07.

OLD DOMINION



Old Dominion continued its reign as CAA Champions, capturing an NCAA-record 16th consecutive title under head coach Wendy Larry. The Lady Monarchs return eight letterwinners, including two starters, and will welcome five newcomers.

First-team All-CAA senior guard TJ Jordan, who drained a league-high 101 three-pointers, tops a talented ODU squad. Jordan led the Lady Monarchs tallying 14.5 points per game and ranked fourth in Division I averaging 3.1 three-pointers per outing.

The Lady Monarchs are loaded up front with junior Tiffany Green (8.4 ppg), senior Tay Ransburg (7.7 ppg) and senior Shahida Williams (7.1 ppg).

TOWSON



Head coach Joe Mathews returns 10 letterwinners, including four starters, from a 17-12 team. Towson will also welcome five newcomers to this year's roster.

Sophomore guard Shanae Baker-Brice, a CAA All-Rookie selection, returns after leading the Tigers in scoring with 13.7 points per game.

Holly Mahan also scored double digits (10.1 ppg) and topped the team in rebounding (7.4 rpg). The senior guard also led Towson in steals (2.86 spg) and ranked 22nd in Division I.

Towson finished fifth in the national grabbing 12.2 steals per game. In addition to Mahan, Baker-Brice (2.6 spg) and Alis Freeman (2.4 spg) also stood among the top 70 in steals per game.

VCU



The Rams return three starters from their 17-13 squad, including seniors Krystal Vaughn and LaKea Jones and junior Quanitra Hollingsworth. Head coach Beth Cunningham welcomes back 10 letterwinners and four newcomers to the 2007-08 VCU roster.

Vaughn led VCU in scoring (15.6 ppg), while Hollingsworth is the CAA's top returning rebounder (9.4 rpg). Both earned a spot on the All-CAA second team.

VCU welcomed Amaka Agugua to its coaching staff this season. The All-CAA honoree played for the Hofstra Pride from 2001-06 and averaged 10.2 points and 6.0 rebounds. The three-year captain owns Hofstra's career record for field goal percentage (.551).

WILLIAM & MARY



Tribe head coach Debbie Taylor returns three double-digit scorers off last year's 19-12 squad, including first team All-CAA forward Kyra Kaylor (14.8 ppg/9.1 rpg), senior wing Devin James (12.7 ppg) and junior forward Dani Kell (12.6 ppg), who returns after missing the final 13 games due to an injury.

William & Mary will also return starting forward Tiffany Benson. The sophomore, who received CAA All-Rookie honors, leads all CAA returners in blocks (2.16 bpg). She also contributed nearly six points per outing.

The Tribe, who ranked 23rd in 3-point FG per game and 26th in 3-point FG % in Division I, return several three-point shooters. Kaylor (35) and junior guard Cortney Protell (37) led the team in three-pointers made, while James (19), Kell (22), and Robyn Barton (19) are also dangerous beyond the arc.

# DELAWARE "Blue Hens"



Courtney Irving



Kyle DeHaven



Tina Martin

## Quick Facts

<b>Location:</b>	Newark, Del.
<b>Date Founded:</b>	1743
<b>Enrollment:</b>	16,000
<b>President:</b>	Dr. Patrick T. Harker
<b>Athletic Dir.:</b>	Edgar N. Johnson
<b>Colors:</b>	Royal Blue and Gold
<b>Home Court:</b>	Bob Carpenter Center (5,000)
<b>NCAA Tourn. Appearances:</b>	2 (most recent: 2007)
<b>WNIT Appearances:</b>	4 (most recent: 2006)
<b>2006-07 Overall Record:</b>	26-6
<b>2006-07 CAA Record (Finish):</b>	16-2 (tied 2nd)

## Media Contact

<b>Assistant SID/WBK Contact:</b>	Kenny Riedel
<b>Office Phone:</b>	302-831-2186
<b>Cell Phone:</b>	302-841-4164
<b>E-Mail Address:</b>	bluecat@udel.edu
<b>Website:</b>	www.udel.edu/sportsinfo

## Team Information

<b>Starters Returning (1):</b>	
Courtney Irving, 6-1, Sr., F	7.8 ppg, 4.8 rpg
<b>Other Top Returnees:</b>	
Kyle DeHaven, 5-8, Sr., G	8.5 ppg, 3.3 apg, 3.1 spg
Farrah Ferguson, 6-4, So., C	<b>CAA All-Defensive Team</b> 2.4 ppg, 2.7 rpg, 1.0 bpg

## Coaching Staff

<b>Head Coach:</b>	Tina Martin (Lock Haven '86)
<b>Overall Record:</b>	215-110 (11 years)
<b>Record at UD:</b>	215-110 (11 years)
<b>Assoc. Head Coach:</b>	Jeanine Radice
<b>Assistants:</b>	Melissa Dymek Tiara Malcom

<b>Key Losses:</b>	
Tyresa Smith, G	19.8 ppg, 7.5 rpg
Chrissy Fisher, F	<b>CAA Defensive POY</b> 13.3 ppg, 7.8 rpg
Melissa Czorniewy, G	<b>3rd team All-CAA</b> 7.4 ppg, 2.4 rpg
Alena Koshansky, G	7.3 ppg, 3.3 apg, 2.5 spg

## 2007-08 Delaware Roster

No.	Name	Pos.	Cl.	Ht.	Hometown/Previous School
11	Kyle DeHaven	G	Sr.	5-9	Herndon, Va./Herndon/William & Mary
12	Gracie Palucis	G	Fr.	5-10	Moon Township, Pa./Moon Arena
15	Brittany Bell	C	RFr.	6-2	Wilmington, Del./Padua
20	Eva Riddick	C	Fr.	6-3	Rochester, N.Y./Rush-Henrietta
22	Sha'Ron Harrison	F	So.	6-1	Patterson, N.J./John F. Kennedy
23	Vanessa Kabongo	G	Fr.	5-9	Hamilton, Ontario, Canada/Eastern Commerce
24	Ethlynn Thomas	G	Jr.	5-10	Gaithersburg, Md./Watkins Mill
30	Courtney Irving	F	Sr.	6-1	Hockessin, Del./Wilmington Charter
31	Corinthia Benison	G	So.	5-10	New York, N.Y./Notre Dame Prep
32	Jamie Mundy	G	Jr.	6-0	Proctorville, Ohio/Spring Valley/Georgetown
34	Tesia Harris	G	Fr.	6-1	Dix Hills, N.Y./Half Hollow Hills West
43	Farrah Ferguson	C	So.	6-4	Ambler, Pa./Wissahickon
44	Ariene Jenkins	F	RFr.	6-1	Woodbridge, Va./Woodbridge

# DREXEL "Dragons"



**Narissa Suber**



**Gabriela Marginean**



**Denise Dillon**

## Quick Facts

<b>Location:</b>	Philadelphia, Pa.
<b>Date Founded:</b>	1891
<b>Enrollment:</b>	19, 885
<b>President:</b>	Dr. Constantine N. Papadakis
<b>Athletic Dir.:</b>	Dr. Eric Zillmer
<b>Colors:</b>	Navy Blue and Gold
<b>Home Court:</b>	Daskalakis Athletic Ctr. (2,500)
<b>NCAA Tourn. Appearances:</b>	0
<b>WNIT Appearances:</b>	0
<b>2006-07 Overall Record:</b>	10-21
<b>2006-07 CAA Record (Finish):</b>	4-14 (9th)

## Media Contact

<b>Associate SID/WBK Contact:</b>	Britt Faulstick
<b>Office Phone:</b>	215-895-6895
<b>Cell Phone:</b>	570-656-7150
<b>E-Mail Address:</b>	bef29@drexel.edu
<b>Website:</b>	www.drexeldragons.com

## Team Information

<b>Starters Returning (4):</b>	
Gabriela Marginean, 6-1, So., F	16.6 ppg, 8.2 rpg
	<b>Rookie of the Year</b>
	<b>3rd team All-CAA</b>
Narissa Suber, 5-9, Sr., G	12.5 ppg, 3.6 rpg
Andrea Peterson, 5-6, Sr., G	4.9 ppg, 2.9 rpg
Anora Suber, 5-9, Sr., F	4.9 ppg, 2.0 rpg

## Other Top Returnees:

Nicole Hester, 5-10, Jr., F	8.0 ppg, 5.1 rpg*
Nicole McCombs, 6-1, So., F	5.5 ppg, 3.5 rpg
Alison Lupariello, 5-6, So., G	4.7 ppg, 1.1 rpg

## Key Losses:

Kira Karlstrom, G	5.2 ppg, 5.4 rpg
-------------------	------------------

\*Statistics from 2005-06 season

## Coaching Staff

<b>Head Coach:</b>	Denise Dillon (Villanova '96)
<b>Overall Record:</b>	54-63 (4 years)
<b>Record at DU:</b>	54-63 (4 years)

<b>Assoc. Head Coach:</b>	Amy Mallon
<b>Assistants:</b>	Melissa Dunne James Clark

## 2007-08 Drexel Roster

No.	Name	Pos.	Cl.	Ht.	Hometown/High School
2	Andrea Peterson	G	Sr.	5-6	Norwood, Pa./Archbishop Carroll
4	Silvia Jankova	G	Fr.	5-8	Banska Bysterica, Slovakia/Gymnazium A. Slaidkovic
5	Jasmina Rosseel	G	Fr.	5-6	Leper, Belgium/Sint-Theresia Instituut
11	Alison Lupariello	G	So.	5-6	Cincinnati, Ohio/Anderson
12	Stacy McCullough	G	Sr.	5-7	Jamison, Pa./Central Bucks East
14	Jennifer Stjärnström	F	So.	6-2	Norrköping, Sweden/De Geer Gymnasiet
22	Delise Johnson	F	Sr.	6-1	Queens, N.Y./Martin Van Buren
24	Nicole Hester	F	Jr.	5-10	Waldorf, Md./Westlake
33	Narissa Suber	G	Sr.	5-9	Mechanicsville, Va./Atlee
34	Anora Suber	F	Sr.	5-9	Mechanicsville, Va./Atlee
41	Brooke Cornish	F	So.	6-4	Collegeville, Pa./Archbishop Carroll
44	Gabriela Marginean	F	So.	6-1	Cluj-Napoca, Romania/Mt. de Chantal Academy (W.V.)
50	Nicole McCombs	F	So.	6-1	Richmond, Va./Manchester

# GEORGE MASON "Patriots"



**Moni Akintunde**



**Lateisha Wade**



**Debbie Taneyhill**

## Quick Facts

<b>Location:</b>	Fairfax, Va.
<b>Date Founded:</b>	1957
<b>Enrollment:</b>	29,889
<b>President:</b>	Dr. Alan G. Merten
<b>Athletic Dir.:</b>	Tom O'Connor
<b>Colors:</b>	Green and Gold
<b>Home Court:</b>	Patriot Center (10,000)
<b>NCAA Tourn. Appearances:</b>	0
<b>WNIT Appearances:</b>	2 (most recent: 2004)
<b>2006-07 Overall Record:</b>	8-21
<b>2006-07 CAA Record (Finish):</b>	2-16 (12th)

## Coaching Staff

<b>Head Coach:</b>	Debbie Taneyhill (George Mason '92)
<b>Overall Record:</b>	135-143 (10 years)
<b>Record at Mason:</b>	135-143 (10 years)
<b>Assistants:</b>	Mike Iuzzolino Chrissy Kelly Kia Cole

## Media Contact

<b>Asst. SID/WBK Contact:</b>	Dan Reisig
<b>Office Phone:</b>	703-993-3268
<b>Cell Phone:</b>	757-784-0121
<b>E-Mail Address:</b>	dreisig@gmu.edu
<b>Website:</b>	GoMason.com

## Team Information

<b>Starters Returning (4):</b>	
Lateisha Wade, 5-8, Jr., G	13.1 ppg, 4.3 rpg
Moni Akintunde, 5-11, Sr., F	9.3 ppg, 6.5 rpg
Casey Quigley, 5-10, Jr., G	7.8 ppg, 2.7 rpg
Jessica Smith, 6-1, Sr., C	4.0 ppg, 4.2 rpg

## Other Top Returnees:

Whitney Ward, 6-0, Jr., G/F	4.2 ppg, 2.1 rpg
C'Vette Henson, 5-8, Jr., G	2.8 ppg, 1.3 rpg
Becky Rautzhan, 6-3, So., C	1.9 ppg, 1.6 rpg

## Key Loss:

Tracy Ann Holness, F	10.7 ppg, 4.1 rpg
Nikkia Slade, F	4.3 ppg, 3.6 rpg

## 2007-08 George Mason Roster

No.	Name	Pos.	Cl.	Ht.	Hometown/High School
2	Lateisha Wade	G	Jr.	5-8	Willingboro, N.J./Marshall
3	Taylor Wejnert	G	Fr.	5-11	Ramsey, N.J./Academy of Holy Angels
5	Jessica Smith	F	Jr.	6-1	Dartmouth, Mass./Dartmouth
12	Brittany Poindexter	G	Fr.	5-8	Kensington, Md./Academy of the Holy Cross
13	Chynelle Rogers	F	So.	6-2	St. Thomas, V.I./Charlotte Amalie
14	Rashauna Hobbs	G	Fr.	5-6	Bowie, Md./Riverdale Baptist
15	Brittany Eley	G	Fr.	5-11	Waldorf, Md./West Lake
22	Whitney Ward	G/F	Jr.	6-0	Columbia, Md./Long Reach
23	Eugenia Broadus	F	Fr.	6-1	Washington, D.C./Archbishop Carrol
33	C'Vette Henson	G	RJr.	5-8	Annapolis, Md./Maryland
34	Casey Quigley	G	Jr.	5-10	Springfield, Va./Lake Braddock
44	Moni Akintunde	F	Jr.	5-11	Laurel, Md./Laurel
50	Becky Rautzhan	C	RSo.	6-3	Lewisburg, Pa./Lewisburg Area
55	Brittney Wilkins	F/C	Fr.	6-3	Cincinnati, Ohio/Montrose Christian

# GEORGIA STATE "Panthers"



**Brittany Hollins**



**Danyell McKeller**



**Lea Henry**

## Quick Facts

<b>Location:</b>	Atlanta, Ga.
<b>Date Founded:</b>	1913
<b>Enrollment:</b>	26,000
<b>President:</b>	Dr. Carl Patton
<b>Athletic Dir.:</b>	Mary McElroy
<b>Colors:</b>	Blue and White
<b>Home Court:</b>	GSU Sports Arena (3,400)
<b>NCAA Tourn. Appearances:</b>	3 (most recent: 2003)
<b>WNIT Appearances:</b>	1 (most recent: 2000)
<b>2006-07 Overall Record:</b>	15-15
<b>2006-07 CAA Record (Finish):</b>	7-11 (8th)

## Coaching Staff

<b>Head Coach:</b>	Lea Henry (Tennessee '83)
<b>Overall Record:</b>	268-225 (17+ years)
<b>Record at GSU:</b>	210-167 (13 years)
<b>Assistants:</b>	Bridgette Gordon Kyle Snipes Gail Striegler

## Media Contact

<b>SID/WBK Contact:</b>	Charlie Taylor
<b>Office Phone:</b>	404-413-4032
<b>Cell Phone:</b>	404-556-2295
<b>E-Mail Address:</b>	athct@langate.gsu.edu
<b>Website:</b>	www.GeorgiaStateSports.com

## Team Information

<b>Starters Returning (2):</b>	
Brittany Hollins, 5-9, Jr., G	10.1 ppg, 3.6 rpg, 3.3 spg
Danyell McKeller, 5-11, So., F	<b>CAA All-Defensive Team</b> 8.1 ppg, 6.3 rpg
<b>Other Top Returnees:</b>	
RaShay Rawls, 6-2, So., F/C	4.6 ppg, 6.1 rpg
Vatai Smith, 6-4, Sr., F/C	3.0 ppg, 1.6 rpg
<b>Key Losses:</b>	
Kelcey Roegiers-Jensen, G	18.0 ppg, 5.2 rpg, 6.6 apg
Marcquitta Head, C	<b>2nd team All-CAA</b> 11.3 ppg, 8.4 rpg, 2.2 bpg
	<b>CAA All-Defensive Team</b>

## 2007-08 Georgia State Roster

No.	Name	Pos.	Cl.	Ht.	Hometown/High School
1	Eboni Fields	G	So.	5-5	Augusta, Ga./Laney Comprehensive
4	Chandrica Smith	F/G	Jr.	6-1	Decatur, Ga./Oak Hill [Va.] Academy/Notre Dame
5	Brittany Hollins	G	Jr.	5-9	Columbia, S.C./Columbia
10	Vatai Smith	F/C	Sr.	6-4	Greensboro, N.C./Dudley
12	Chandra Harris	F	Fr.	6-2	Macon, Ga./Northeast
20	Brittany Hudson	F	Jr.	6-0	Tallahassee, Fla./Florida A&M H.S.
21	Courtney Chasten	G	So.	5-8	Valrico, Fla./Durant
22	Traci Haltiwanger	G	Fr.	5-9	Summerville, S.C./Summerville
25	RaShay Rawls	F/C	So.	6-2	Augusta, Ga./Cross Creek
31	Monica Mann	G	So.	5-5	Smyrna, Ga./Campbell
32	Stacie Young	F	Jr.	6-0	Miami, Fla./Miami Killian/Miami-Dade College
42	Danyell McKeller	F	So.	5-11	Fayetteville, N.C./Westover
44	Danielle Anderson	F	Fr.	6-0	Smiths Station, Ala./Smiths Station

# HOFSTRA "Pride"



**Niki Williams**



**Sam Brigham**



**Krista Kilburn-Steveskey**

## Quick Facts

<b>Location:</b>	Hempstead, N.Y.
<b>Date Founded:</b>	1935
<b>Enrollment:</b>	13,000
<b>President:</b>	Stuart Rabinowitz
<b>Athletic Dir.:</b>	Jack Hayes
<b>Colors:</b>	Gold, White and Blue
<b>Home Court:</b>	Mack Sports Complex (5,047)
<b>NCAA Tourn. Appearances:</b>	0
<b>WNIT Appearances:</b>	2 (most recent: 2007)
<b>2006-07 Overall Record</b>	26-8
<b>2006-07 CAA Record (Finish)</b>	13-5 (4th)

## Coaching Staff

<b>Head Coach:</b>	Krista Kilburn-Steveskey (NC State '90)
<b>Overall Record:</b>	26-8 (1 year)
<b>Record at HU:</b>	26-8 (1 year)
<b>Assistants:</b>	Ginny Boggess Carol Peterka Danielle Santos

## Media Contact

<b>Assistant SID/WBK Contact:</b>	Stephen Gorchov
<b>Office Phone:</b>	516-463-4933
<b>Cell Phone:</b>	516-523-5252
<b>E-Mail Address:</b>	stephen.a.gorchov@hofstra.edu
<b>Website:</b>	www.hofstra.edu/athletics

## Team Information

<b>Starters Returning (1):</b>	
Niki Williams, 5-6, Jr., G	4.6 ppg, 3.4 rpg, 3.6 apg
<b>Other Top Returnees:</b>	
Sam Brigham, 5-10, So., G	4.4 ppg, 1.3 rpg
Natty Fripp, 5-8, Jr., G	<b>CAA All-Rookie Team</b> 2.6 ppg, 1.4 rpg, 1.2 apg
Linn Quamme, 6-0, Sr., F	1.8 ppg, 1.0 rpg
<b>Key Losses:</b>	
Vanessa Gidden, C	14.3 ppg, 7.5 rpg
Cigi McCollin, G	<b>2nd team All-CAA</b> 14.1 ppg, 3.6 rpg, 2.5 apg
Lana Harshaw, F	<b>2nd team All-CAA</b> 11.0 ppg, 6.9 rpg
Lizanne Murphy, F	11.4 ppg, 8.7 rpg, 2.2 apg

## 2007-08 Hofstra Roster

No.	Name	Pos.	Cl.	Ht.	Hometown/High School
4	Natty Fripp	G	Jr.	5-8	Oakland, Calif./St. Mary's College HS
10	Candice Bellochio	G	Fr.	5-6	Staten Island, N.Y./St. Peter's
12	Aamira Terry	G	Fr.	5-8	Atlanta, Ga./W.D. Mohammed
13	Sam Brigham	G	So.	5-10	Simsbury, Conn./Simsbury
14	Britné Rodgers	G/F	Fr.	5-9	Virginia Beach, Va./Princess Anne
23	Kristina Campbell	F	Jr.	6-1	Princeton, N.J./Notre Dame
25	Frances Lyons	F	Jr.	5-10	Brooklyn, N.Y./James Madison/Monroe CC
32	India Ali	G	Sr.	5-5	Lithonia, Ga./Southwest DeKalb
34	Niki Williams	G	Jr.	5-6	Pittsburgh, Pa./Seton-La Salle
35	Ashley Wilcots	F/C	Fr.	6-1	Virginia Beach, Va./Landstown
43	Trenise Fuller	C	Jr.	6-4	Queens, N.Y./Francis Lewis/Monroe CC
50	Isoken Uzamere	F/C	Fr.	6-2	Brentwood, N.Y./Brentwood
51	Christina Biedny	C	Jr.	6-5	East Amherst, N.Y./Clarence
52	Linn Quamme	F	Sr.	6-0	West Salem, Wisc./West Salem

# JAMES MADISON "Dukes"



**Tamera Young**



**Jennifer Brown**



**Kenny Brooks**

## Quick Facts

<b>Location:</b>	Harrisonburg, Va.
<b>Date Founded:</b>	1908
<b>Enrollment:</b>	16,900
<b>President:</b>	Dr. Linwood H. Rose
<b>Athletic Dir.:</b>	Jeff Bourne
<b>Colors:</b>	Purple and Gold
<b>Home Court:</b>	JMU Convocation Ctr. (7,156)
<b>NCAA Tourn. Appearances:</b>	7 (most recent: 2007)
<b>WNIT Appearances:</b>	2 (most recent: 2006)
<b>2006-07 Overall Record</b>	27-6
<b>2006-07 CAA Record (Finish)</b>	16-2 (Tied 2nd)

## Media Contact

<b>Assistant SID/WBK Contact:</b>	Milla Sue Wisecarver
<b>Office Phone:</b>	540-568-6154
<b>Cell Phone:</b>	540-271-4923
<b>E-Mail Address:</b>	wisecams@jmu.edu
<b>Website</b>	www.jmusports.com

## Team Information

<b>Starters Returning (1):</b>	
Tamera Young, 6-2, Sr., G	16.5 ppg, 8.0 rpg <b>1st team All-CAA</b>

### Other Top Returnees:

Jennifer Brown, 6-2, Sr., F	5.0 ppg, 5.4 rpg
Kisha Stokes, 6-0, Jr., F	2.6 ppg, 3.2 rpg
Jasmin Lawrence, 5-8, Sr., G	2.9 ppg, 1.1 rpg

### Key Losses:

Meredith Alexis, C	18.4 ppg, 11.6 rpg <b>CAA Player of the Year</b>
Lesley Dickinson, G	10.8 ppg, 3.2 rpg
Shirley McCall, G/F	10.6 ppg, 5.1 rpg <b>CAA All-Defensive Team</b>
Andrea Benvenuto, G	6.7 ppg, 6.8 apg <b>3rd team All-CAA</b>

## Coaching Staff

<b>Head Coach:</b>	Kenny Brooks (James Madison '92)
<b>Overall Record:</b>	98-52 (5 years)
<b>Record at JMU:</b>	98-52 (5 years)

<b>Assistants:</b>	Nikki Davis
	Jackie Smith
	Sean O'Regan

## 2007-08 James Madison Roster

No.	Name	Pos.	Cl.	Ht.	Hometown/High School
1	Kisha Stokes	F	Jr.	6-0	New York, N.Y./Murry Bergtraum
2	MaLisa Bumpus	G	RFr.	5-7	Virginia Beach, Va./Norfolk Collegiate
10	Courtney Hamner	G	Fr.	5-10	Manassas, Va./Osborn Park
11	Tamera Young	G	Sr.	6-2	Wilmington, N.C./Laney
12	Nina Uqdah	F	RJr.	6-1	Lanham, Md./Riverdale Baptist
13	Nana Fobi-Agyeman	C	RSo.	6-3	Lorton, Va./Hayfield
21	Jasmin Lawrence	G	Sr.	5-8	Queens, N.Y./Frances Lewis
22	Jennifer Brown	F	RSr.	6-2	Brooklyn, N.Y./Martin Luther King
23	Dawn Evans	G	Fr.	5-7	Clarksville, Tenn./Northeast
24	Lauren Jimenez	C	Fr.	6-4	North Bergen, N.J./North Bergen
30	Brentney Moore	F	So.	6-0	Orange, Va./Orange County
32	Jalissa Taylor	F	Fr.	6-3	Chesterfield, Va./L.C. Byrd
53	Jennifer Harris	G	RSr.	6-0	Harrisburg, Pa./Central Dauphin

# UNC WILMINGTON "Seahawks"



**Sahsha Taylor**



**Greta Luksyte**



**Ann Hancock**

## Quick Facts

<b>Location:</b>	Wilmington, N.C.
<b>Date Founded:</b>	1947
<b>Enrollment:</b>	12,500
<b>President:</b>	Dr. Rosemary DePaolo
<b>Athletic Dir.:</b>	Kelly Mehrtens
<b>Colors:</b>	Teal, Gold and Navy Blue
<b>Home Court:</b>	Trask Coliseum (6,100)
<b>NCAA Tourn. Appearances:</b>	0
<b>WNIT Appearances:</b>	0
<b>2006-07 Overall Record:</b>	8-23
<b>2006-07 CAA Record (Finish):</b>	3-15 (tied 10th)

## Media Contact

<b>Assistant SID/WBK Contact:</b>	Jarrett Abelson
<b>Office Phone:</b>	910-962-3252
<b>Cell Phone:</b>	585-732-7120
<b>E-Mail Address:</b>	abelsonj@uncw.edu
<b>Website:</b>	www.uncwsports.com

## Coaching Staff

<b>Head Coach:</b>	Ann Hancock (Wingate '92)
<b>Overall Record:</b>	93-108 (7 years)
<b>Record at UNCW:</b>	93-108 (7 years)
<b>Assistants:</b>	Trent Bunn Jill Poe Jimmy Garrity

## Team Information

<b>Starters Returning (3):</b>	
Sahsha Taylor, 6-0, Jr., F	12.4 ppg, 6.1 rpg
Greta Luksyte, 5-10, So., G	6.8 ppg, 2.7 rpg
Shade Smith, 5-7, Jr., G	3.8 ppg, 3.1 rpg

## Other Top Returnees:

Stephanie Fernald, 5-8, Sr., G	7.0 ppg, 2.4 rpg
Candace Walker, 5-9, So., G	6.6 ppg, 4.9 rpg*
Becca Papach, 5-11, Sr., G/F	3.1 ppg, 3.3 rpg

## Key Losses:

Lori Drake, G	13.7 ppg, 8.1 rpg
Alex Stewart, F	7.9 ppg, 5.1 rpg
Denise Lawrence, G	4.1 ppg, 2.9 rpg

\*Statistics from 2005-06 season

## 2007-08 UNC Wilmington Roster

No.	Name	Pos.	Cl.	Ht.	Hometown/High School
1	Shade Smith	G	Jr.	5-7	Jonesboro, Ga./Jonesboro
4	Greta Luksyte	G	So.	5-10	Vilnius, Lithuania/Walsingham Academy
10	Becca Papach	F	Sr.	5-11	Whiting, Ind./Whiting
22	Stephanie Fernald	G	Sr.	5-8	Midlothian, Va./Midlothian
24	Candace Walker	G	RSO.	5-9	Austell, Ga./North Atlanta
31	Treasure Johnson	G/F	Fr.	6-0	Columbus, Ga./Shaw
32	Sheronda McLean	G	Fr.	5-5	Raleigh, N.C./Wakefield
33	Casey Sawhook	G	So.	5-6	New Kensington, Pa./Valley
34	Sahsha Taylor	G/F	RJr.	6-0	Charlotte, N.C./Victory Christian
35	Kelsy Reitz	G/F	Fr.	6-1	Arlington, Va./Wakefield
42	Martha White	C	Fr.	6-2	Jacksonville, N.C./Jacksonville
45	Brittany Blackwell	G/F	Fr.	6-1	Raleigh, N.C./Cary Academy

# NORTHEASTERN "Huskies"



**Shaleyse Smallwood**



**Ashlee Feldman**



**Daynia La-Force Mann**

## Quick Facts

<b>Location:</b>	Boston, Mass.
<b>Date Founded:</b>	1898
<b>Enrollment:</b>	14,492
<b>President:</b>	Dr. Joseph Aoun
<b>Athletic Dir.:</b>	Peter Roby
<b>Colors:</b>	Red and Black
<b>Home Court:</b>	Solomon Court (2,500)
<b>NCAA Tourn. Appearances:</b>	0
<b>WNIT Appearances:</b>	0
<b>2006-07 Overall Record:</b>	4-26
<b>2006-07 CAA Record (Finish):</b>	3-15 (tied 10th)

## Media Contact

<b>Assistant SID/WBK Contact:</b>	Kyle Mack
<b>Office Phone:</b>	617-373-4154
<b>Cell Phone:</b>	(646) 387-2427
<b>E-Mail Address:</b>	kylemack@gonu.com
<b>Website:</b>	www.GoNU.com

## Team Information

<b>Starters Returning (4):</b>	
Shaleyse Smallwood, 5-5, Sr., G	16.0 ppg, 3.5 rpg, 4.1 apg
Lucia Pablos, 5-5, Sr., G	<b>3rd team All-CAA</b> 13.5 ppg, 3.4 rpg, 3.5 apg
Ashlee Feldman, 5-10, Jr., G	12.7 ppg, .902 FG%
Stefanie Hodell, 5-11, Sr., F	5.4 ppg, 8.8 rpg

## Other Top Returnees:

Kendra Walton, 6-1, So., G	5.7 ppg, 2.5 rpg
Kim Carr, 6-2, So., F	4.6 ppg, 3.7 rpg

## Key Losses:

Jody Burrows, G	2.6 ppg, 2.9 rpg
-----------------	------------------

## Coaching Staff

<b>Head Coach:</b>	Daynia La-Force Mann (Georgetown '95)
<b>Overall Record:</b>	28-33 (2 years)
<b>Record at NU:</b>	4-26 (1 year)
<b>Assistants:</b>	Monge Codio, Jr. Vicki Wancel Sherri Brown

## 2007-08 Northeastern Roster

No.	Name	Pos.	Cl.	Ht.	Hometown/High School
1	Shaleyse Smallwood	G	Sr.	5-5	Boston, Mass./O'Bryant
4	Kendra Walton	F	So.	6-1	East Hartford, Conn./Wilbur L. Cross
10	Mia Mayberry	F	Fr.	6-2	Rock Island, Ill./Rock Island
11	Ashlee Feldman	G	Jr.	5-10	Lancaster, Pa./Collingswood
12	Taryn Christian	G	Fr.	5-11	Silver Spring, Md./Springbrook
13	Sigrid Scherpiet	F	Jr.	6-2	Grosskorbetha, Germany/SportgymnasiumHalle
14	India Thomas	G	Sr.	5-8	Alexandria, Va./Mount Vernon
24	Tiffany Crews	F	Fr.	6-1	Willingboro, N.Y./Willingboro
25	Stephanie Hodell	F	Sr.	5-11	Port Jefferson, N.Y./Comsewogue
30	Desiree Singleton	F	Fr.	6-1	Philadelphia, Pa./Simon Gratz
32	Jasmine Crew	G	Fr.	5-5	Camden, N.J./Camden Catholic
33	Kim Carr	F	So.	6-2	Baltimore, Md./Woodlawn
45	Lucia Pablos	G	Sr.	5-5	Leon, Spain/Colegio Leones Milagrosa

# OLD DOMINION "Lady Monarchs"



**TJ Jordan**



**Tiffany Green**



**Wendy Larry**

## Quick Facts

<b>Location:</b>	Norfolk, Va.
<b>Date Founded:</b>	1930
<b>Enrollment:</b>	20,800
<b>President:</b>	Dr. Roseann Runte
<b>Athletic Dir.:</b>	Dr. Jim Jarrett
<b>Colors:</b>	Slate Blue, Silver & Light Blue
<b>Home Court:</b>	Constant Convocation Center (8,600)
<b>NCAA Tourn. Appearances:</b>	24 (most recent: 2007)
<b>WNIT Appearances:</b>	0
<b>2006-07 Overall Record:</b>	24-9
<b>2006-07 CAA Record (Finish):</b>	17-1 (1st)

## Media Contact

<b>Assistant SID/WBK Contact:</b>	Kimberly Zivkovich
<b>Office Phone:</b>	757-683-5520
<b>Cell Phone:</b>	757-617-7757
<b>E-Mail Address:</b>	kzivkovi@odu.edu
<b>Website:</b>	www.odusports.com

## Team Information

### Starters Returning (2):

TJ Jordan, 5-8, Sr., G	14.5 ppg, 3.4 rpg
Tiffany Green, 6-2, Jr., C/F	<b>1st team All-CAA</b> 8.4 ppg, 6.0 rpg

### Other Top Returnees:

Tamara Ransburg, 6-4, Sr., C/F	7.7 ppg, 5.6 rpg
Shahida Williams, 5-11, Sr., F	7.1 ppg, 4.9 rpg
Jazzmin Walters, 5-2, Jr., G	5.2 ppg, 3.1 apg

### Key Losses:

Sherida Triggs, F	9.8 ppg, 6.0 rpg
Tish Lyons, F	8.4 ppg, 3.2 rpg
Shantel Wilson, G	2.7 ppg, 42.3 rpg

## Coaching Staff

<b>Head Coach:</b>	Wendy Larry (Old Dominion '77)
<b>Overall Record:</b>	521-190 (24 years)
<b>Record at ODU:</b>	472-160 (21 years)

<b>Assistants:</b>	Nikita Lowry Dawkins Karen Barefoot Marie Christian
--------------------	---

## 2007-08 Old Dominion Roster

No.	Name	Pos.	Cl.	Ht.	Hometown/Previous School
1	Tamara Ransburg	C/F	Sr.	6-4	Kansas City, Mo./Coastal Christian/Kansas
2	Jasmine Parker	G	Fr.	5-6	Norfolk, Va./Maury
4	Jazzmin Walters	G	Jr.	5-2	Norfolk, Va./Lake Taylor
5	Alena Vereonia	G/F	Fr.	6-2	Yekaterinberg, Russia/Forsyth Country Day
11	Shahida Williams	F	Sr.	5-11	Newark, N.J./Malcolm X Shabazz
12	Jen Nuzzo		G	Jr.	5-8 Newport News, Va./Woodside
20	Vicki Collier	G	RFr.	5-11	Upper Marlboro, Md./Riverdale Baptist
23	TJ Jordan	G	Sr.	5-8	Portsmouth, Va./Wilson
24	Jessica Canady	F	So.	6-1	Williamsburg, Va./James Town
25	Sierra Little	F	Fr.	6-1	Greensboro, N.C./Dudley
35	Shadasia Green	G	Fr.	5-9	Patterson, N.J./Eastside
44	Megan Pym	C/F	Sr.	6-4	Newfield, N.Y./Newfield
45	Tiffany Green	C/F	Jr.	6-2	Chesapeake, Va./Indian River

# TOWSON "Tigers"



**Jamell Beasley**



**Shanae Baker-Brice**



**Joe Mathews**

## Quick Facts

<b>Location:</b>	Towson, Md.
<b>Date Founded:</b>	1866
<b>Enrollment:</b>	18,011
<b>President:</b>	Dr. Robert Caret
<b>Athletic Dir.:</b>	Mike Hermann
<b>Colors:</b>	Gold, White and Black
<b>Home Court:</b>	Towson Center (5,000)
<b>NCAA Tourn. Appearances:</b>	0
<b>WNIT Appearances:</b>	1 (most recent: 1969)
<b>2006-07 Overall Record:</b>	17-12
<b>2006-07 CAA Record (Finish):</b>	8-10 (7th)

## Media Contact

<b>Assistant SID/WBK Contact:</b>	Eric Rhew
<b>Office Phone:</b>	410-704-6258
<b>Cell Phone:</b>	443-690-2104
<b>E-Mail Address:</b>	erhew@towson.edu
<b>Website:</b>	www.towson.tigers.com

## Team Information

### Starters Returning (4):

Shanae Baker-Brice, 5-6, So., G	13.7 ppg, 4.7 rpg
Holly Mahan, 5-9, Sr., G	10.1 ppg, 7.4 rpg, 2.7 spg
Alis Freeman, 5-9, Jr., G	5.1 ppg, 3.8 apg
Kandace Davis, 6-1, So., F	5.0 ppg, 5.1 rpg

### CAA All-Rookie Team

### Other Top Returnees:

Jamell Beasley, 5-9, Sr., G	8.8 ppg, 3.4 rpg
-----------------------------	------------------

### Key Losses:

Kelly Robinson, F	10.2 ppg, 4.7 rpg
-------------------	-------------------

## Coaching Staff

<b>Head Coach:</b>	Joe Mathews (Radford '91)
<b>Overall Record:</b>	56-115 (6 years)
<b>Record at TU:</b>	56-115 (6 years)

<b>Assoc. Head Coach:</b>	Stacy Alexander
<b>Assistants:</b>	Stephanie Cross Joi Jefferson

## 2007-08 Towson Roster

No.	Name	Pos.	Cl.	Ht.	Hometown/Previous School
00	Jessica Haywood	F	Fr.	6-2	Camden, N.J./Woodrow Wilson
1	Alexis Abraham	G	So.	5-9	Bowie, Md./Riverdale Baptist
3	Shanae Baker-Brice	G	So.	5-6	Washington, D.C./Theodore Roosevelt
5	Halienna Snowden	F	So.	6-0	Laurel, Md./Seton Keough
10	Alis Freeman	G	Jr.	5-9	Potomac, Md./Winston Churchill
11	Dovile Miliauskaitė	F	Fr.	6-2	Lithuania/Holy Cross Regional
15	Jamell Beasley	G	Sr.	5-9	Pottstown, Pa./Richmond
20	Simona Petronyte	G	Fr.	5-8	Lithuania/Holy Cross Regional
21	Holly Mahan	G	Sr.	5-9	Queens, N.Y./Monroe C.C.
22	Maya Newman	G	So.	5-8	Baltimore, Md./St. Frances Academy
23	Brandy Black	G	Jr.	5-7	Houston, Texas/Blinn College
24	Meredith Kennedy	G	Fr.	5-9	Haddon Heights, N.J./Haddon Heights
25	Ashlee Keown	F	So.	6-1	Manassas, Va./C.D. Hylton
33	Kandace Davis	F	So.	6-1	Hyattsville, Md./Laurel
45	Omara Parker	G	Fr.	5-10	Glen Burnie, Md./Annapolis

# VCU "Rams"



**Quanitra Hollingsworth**



**Krystal Vaughn**



**Beth Cunningham**

## Quick Facts

**Location:** Richmond, Va.  
**Date Founded:** 1838  
**Enrollment:** 30, 381  
**President:** Dr. Eugene P. Trani  
**Athletic Dir.:** Norwood Teague  
**Colors:** Black and Gold  
**Home Court:** Alltel Pavilion at Stuart C. Siegel Center (7,500)  
**NCAA Tourn. Appearances:** 0  
**WNIT Appearances:** 1 (most recent: 1995)  
**2006-07 Overall Record:** 17-13  
**2006-07 CAA Record (Finish):** 9-9 (6th)

## Media Contact

**Assistant SID/WBK Contact:** Scott Day  
**Office Phone:** 804-828-1727  
**Cell Phone:** 302-593-0115  
**E-Mail Address:** sdday@vcu.edu  
**Website:** vcuathletics.com

## Team Information

**Starters Returning (3):**  
 Krystal Vaughn, 6-1, Sr., F 15.2 ppg, 6.8 rpg  
**2nd team All-CAA**  
 Quanitra Hollingsworth, 6-4, Jr., C 13.7 ppg, 9.4 rpg  
**2nd team All-CAA**  
 LaKea Jones, 5-8, Sr., G 6.0 ppg, 4.0 apg

## Other Top Returnees:

D'Andra Moss, 6-0, So., F 6.4 ppg, 3.2 rpg  
 La'Tavia Rorie, 5-8, So., G 3.7 ppg, 2.9 rpg  
 Brittany Pinkney, 6-0, Sr., G 3.4 ppg, 2.3 rpg

## Key Losses:

Michele Cosel, G 9.4 ppg, 3.2 rpg  
 Miranda Smith, F 4.1 ppg, 2.6 rpg

## Coaching Staff

**Head Coach:** Beth Cunningham (Notre Dame '97)  
**Overall Record:** 55-60 (4 years)  
**Record at VCU:** 55-60 (4 years)

**Assoc. Head Coach:** Curt Kassab  
**Assistants:** Julia Huddleston  
 Amaka Agugua

## 2007-08 VCU Roster

No.	Name	Pos.	Cl.	Ht.	Hometown/Previous School
00	Quanitra Hollingsworth	C	RJr.	6-4	Chesapeake, Va./Great Bridge
3	Ebony Patterson	G	Fr.	5-7	Chesterfield, Va./L.C. Byrd
4	Kita Waller	G	So.	5-10	Gainseville, Ga./Gainesville
5	Krystal Vaughn	F	Sr.	6-1	Baltimore, Md./Lake Clifton-Eastern
10	Radoslava Bachvarova	F	Jr.	6-0	Varna, Bulgaria/Daytona Beach C.C.
12	Vera Chistova	G	Sr.	5-10	St. Petersburg, Russia/St. Petersburg #86
13	LaKea Jones	G	Sr.	5-8	Fort Washington, Md./National Christian Acad.
14	La'Tavia Rorie	G	So.	5-8	Charlotte, N.C./Harding University HS
22	Kurtise Wilkes	G	So.	5-7	Danville, Va./George Washington HS
23	Jessica Taylor	G	Fr.	5-8	Woodbridge, Va./Woodbridge
24	D'Andra Moss	F	So.	6-0	Atlanta, Ga./Norcross
32	Stacy Griffith	F	Fr.	6-0	Fredericksburg, Va./Riverbend
33	Cache' Gamble	F	So.	6-2	Newport News, Va./Woodside
35	Brittany Pinkney	G	Sr.	6-0	Clinton, Md./The Patterson School

# WILLIAM & MARY "Tribe"

Tribe



**Kyra Kaylor**



**Devin James**



**Debbie Taylor**

## Quick Facts

**Location:** Williamsburg, Va.  
**Date Founded:** 1693  
**Enrollment:** 5,500  
**President:** Gene R. Nichol  
**Athletic Dir.:** Terry Driscoll  
**Colors:** Green, Gold and Silver  
**Home Court:** William & Mary Hall (8,600)  
**NCAA Tourn. Appearances:** 0  
**WNIT Appearances:** 0  
**2006-07 Overall Record:** 19-12  
**2006-07 CAA Record (Finish):** 10-8 (5th)

## Media Contact

**Associate SID/WBK Contact:** Rob Turner  
**Office Phone:** 757-221-3370  
**Cell Phone:** 757-846-1460  
**E-Mail Address:** rrtturn@wm.edu  
**Website:** www.TribeAthletics.com

## Team Information

**Starters Returning (4):**  
 Kyra Kaylor, 6-0, Sr., F 14.8 ppg, 9.1 rpg  
*1st team All-CAA*  
 Devin James, 5-11, Sr., G/F 12.7 ppg, 6.7 rpg  
 Dani Kell, 6-0, Jr., G/F 12.6 ppg, 5.7 rpg  
 Tiffany Benson, 6-1, So., F 5.7 ppg, 2.16 bpg  
*CAA All-Rookie Team*

**Other Top Returnees:**  
 Courtney Portell, 5-8, Jr., G 6.3 ppg, 2.7 rpg

**Key Losses:**  
 Sarah Stroh, G 6.9 ppg, 3.77 apg

## Coaching Staff

**Head Coach:** Debbie Taylor (William & Mary '86)  
**Overall Record:** 85-144 (8 years)  
**Record at W&M:** 85-144 (8 years)  
**Assistants:** Meg Barber  
 Kia Butts  
 Lizzie Schiel

## 2007-08 William & Mary Roster

No.	Name	Pos.	Cl.	Ht.	Hometown/High School
2	Courtney Portell	G	Jr.	5-8	Woodbridge, Va./Forest Park
3	Kelly Heath	G	So.	6-0	Suffield, Conn./Suffield
12	Dani Kell	G/F	Jr.	6-0	Lutherville, Md./Roland Park
13	Julianne Thomas-Drolet	F	Jr.	6-2	Quebec City, Quebec/St. Lawrence
14	Robyn Barton	G/F	So.	6-0	Lake Oswego, Ore./Lake Oswego
21	Aleia Gland	G	Fr.	5-10	Toronto, Ontario/David and Mary Thomson
23	Lindsey Moller	G	So.	5-10	Longmont, Colo./Longmont
24	Katy Oblinger	G	Fr.	5-5	Altoona, Pa./Altoona Area
25	Katherine DeHenzel	G	Fr.	5-7	Bowie, Md./St. John's College H.S.
32	Devin James	G/F	Sr.	5-11	Pipersville, Pa./Central Bucks East
33	Tiffany Benson	F	So.	6-1	Virginia Beach, Va./Princess Anne
34	Lauren Aadland	G/F	So.	6-1	Carlsbad, Calif./Carlsbad
44	Kyra Kaylor	F	Sr.	6-0	Pittsburgh, Pa./Upper St. Clair

**2006-07 Colonial Athletic Association  
CONFERENCE BASKETBALL STATISTICS  
Through games of Aug 31, 2007 (All games)**

**SCORING OFFENSE**

## Team	G	W-L	Pts	Avg/G
1.James Madison.....	33	27-6	2391	72.5
2.Old Dominion.....	33	24-9	2325	70.5
3.Delaware.....	32	26-6	2202	68.8
4.Georgia State.....	30	15-15	2031	67.7
5.Hofstra.....	34	26-8	2249	66.1
6.VCU.....	30	17-13	1920	64.0
7.Northeastern.....	30	4-26	1842	61.4
8.William & Mary.....	31	19-12	1879	60.6
9.Towson.....	29	17-12	1740	60.0
10.George Mason.....	29	8-21	1674	57.7
11.Drexel.....	31	10-21	1774	57.2
12.UNC Wilmington.....	31	8-23	1705	55.0

**SCORING DEFENSE**

## Team	G	Pts	Avg/G
1.Delaware.....	32	1789	55.9
2.William & Mary.....	31	1793	57.8
3.Hofstra.....	34	1983	58.3
4.James Madison.....	33	1969	59.7
5.Old Dominion.....	33	2062	62.5
6.Towson.....	29	1814	62.6
7.UNC Wilmington.....	31	1956	63.1
8.Drexel.....	31	1985	64.0
9.VCU.....	30	1934	64.5
10.George Mason.....	29	1895	65.3
11.Georgia State.....	30	1992	66.4
12.Northeastern.....	30	2151	71.7

**SCORING MARGIN**

## Team	G	OFF	DEF	Margin
1.Delaware.....	32	68.8	55.9	+12.9
2.James Madison.....	33	72.5	59.7	+12.8
3.Old Dominion.....	33	70.5	62.5	+8.0
4.Hofstra.....	34	66.1	58.3	+7.8
5.William & Mary.....	31	60.6	57.8	+2.8
6.Georgia State.....	30	67.7	66.4	+1.3
7.VCU.....	30	64.0	64.5	-0.5
8.Towson.....	29	60.0	62.6	-2.6
9.Drexel.....	31	57.2	64.0	-6.8
10.George Mason.....	29	57.7	65.3	-7.6
11.UNC Wilmington.....	31	55.0	63.1	-8.1
12.Northeastern.....	30	61.4	71.7	-10.3

**FREE THROW PERCENTAGES**

## Team	G	FTM	FTA	Pct
1.Northeastern.....	30	380	503	.755
2.Drexel.....	31	356	481	.740
3.Delaware.....	32	466	632	.737
4.George Mason.....	29	392	543	.722
5.Hofstra.....	34	518	737	.703
6.James Madison.....	33	517	743	.696
7.William & Mary.....	31	393	566	.694
8.Old Dominion.....	33	505	755	.669
9.Georgia State.....	30	356	535	.665
10.UNC Wilmington.....	31	413	637	.648
11.VCU.....	30	471	742	.635
12.Towson.....	29	360	579	.622

**FIELD GOAL PERCENTAGES**

## Team	G	FG	FGA	Pct
1.Georgia State.....	30	768	1789	.429
2.James Madison.....	33	871	2029	.429
3.Old Dominion.....	33	842	1999	.421
4.Delaware.....	32	810	1930	.420
5.VCU.....	30	679	1695	.401
6.Hofstra.....	34	784	1984	.395
7.William & Mary.....	31	645	1668	.387
8.UNC Wilmington.....	31	602	1575	.382
9.Northeastern.....	30	655	1726	.379
10.Towson.....	29	641	1693	.379
11.George Mason.....	29	576	1564	.368
12.Drexel.....	31	612	1679	.365

**FIELD GOAL PCT DEFENSE**

## Team	G	FG	FGA	Pct
1.William & Mary.....	31	655	1844	.355
2.Hofstra.....	34	702	1897	.370
3.James Madison.....	33	724	1915	.378
4.Georgia State.....	30	722	1903	.379
5.Old Dominion.....	33	716	1856	.386
6.Delaware.....	32	615	1579	.389
7.UNC Wilmington.....	31	714	1762	.405
8.George Mason.....	29	643	1570	.410
9.Towson.....	29	638	1541	.414
10.VCU.....	30	738	1779	.415
11.Drexel.....	31	683	1591	.429
12.Northeastern.....	30	807	1816	.444

**3-POINT FIELD GOAL PERCENTAGES**

## Team	G	FG	FGA	Pct
1.William & Mary.....	31	196	544	.360
2.Georgia State.....	30	139	405	.343
3.Hofstra.....	34	163	487	.335
4.James Madison.....	33	132	396	.333
5.Delaware.....	32	116	351	.330
6.Old Dominion.....	33	136	423	.322
7.Drexel.....	31	194	613	.316
8.Northeastern.....	30	152	487	.312
9.George Mason.....	29	130	423	.307
10.VCU.....	30	91	300	.303
11.UNC Wilmington.....	31	88	334	.263
12.Towson.....	29	98	391	.251

**3-POINT FIELD GOAL PCT DEFENSE**

## Team	G	FG	FGA	Pct
1.Hofstra.....	34	109	407	.268
2.James Madison.....	33	106	383	.277
3.William & Mary.....	31	131	457	.287
4.Georgia State.....	30	147	511	.288
5.Old Dominion.....	33	132	427	.309
6.Delaware.....	32	171	549	.311
7.George Mason.....	29	145	461	.315
8.VCU.....	30	119	378	.315
9.Towson.....	29	113	355	.318
10.Drexel.....	31	124	389	.319
11.UNC Wilmington.....	31	160	478	.335
12.Northeastern.....	30	137	407	.337

**2006-07 Colonial Athletic Association  
CONFERENCE BASKETBALL STATISTICS  
Through games of Aug 31, 2007 (All games)**

**REBOUNDING OFFENSE**

## Team	G	Reb	Avg/G
1.James Madison.....	33	1459	44.2
2.Old Dominion.....	33	1383	41.9
3.Hofstra.....	34	1403	41.3
4.Georgia State.....	30	1226	40.9
5.VCU.....	30	1177	39.2
6.William & Mary.....	31	1201	38.7
7.Delaware.....	32	1159	36.2
8.Towson.....	29	1048	36.1
9.UNC Wilmington.....	31	1117	36.0
10.George Mason.....	29	1022	35.2
11.Drexel.....	31	1020	32.9
12.Northeastern.....	30	976	32.5

**REBOUNDING DEFENSE**

## Team	G	Reb	Avg/G
1.James Madison.....	33	1097	33.2
2.Delaware.....	32	1098	34.3
3.Old Dominion.....	33	1182	35.8
4.Hofstra.....	34	1223	36.0
5.Drexel.....	31	1132	36.5
6.UNC Wilmington.....	31	1145	36.9
7.VCU.....	30	1121	37.4
8.George Mason.....	29	1085	37.4
9.William & Mary.....	31	1195	38.5
10.Towson.....	29	1151	39.7
11.Georgia State.....	30	1194	39.8
12.Northeastern.....	30	1244	41.5

**REBOUNDING MARGIN**

## Team	G	TEAM	Avg	OPP	Avg	Margin
1.James Madison.....	33	1459	44.2	1097	33.2	+11.0
2.Old Dominion.....	33	1383	41.9	1182	35.8	+6.1
3.Hofstra.....	34	1403	41.3	1223	36.0	+5.3
4.Delaware.....	32	1159	36.2	1098	34.3	+1.9
5.VCU.....	30	1177	39.2	1121	37.4	+1.9
6.Georgia State.....	30	1226	40.9	1194	39.8	+1.1
7.William & Mary.....	31	1201	38.7	1195	38.5	+0.2
8.UNC Wilmington.....	31	1117	36.0	1145	36.9	-0.9
9.George Mason.....	29	1022	35.2	1085	37.4	-2.2
10.Towson.....	29	1048	36.1	1151	39.7	-3.6
11.Drexel.....	31	1020	32.9	1132	36.5	-3.6
12.Northeastern.....	30	976	32.5	1244	41.5	-8.9

**BLOCKED SHOTS**

## Team	G	Blocks	Avg/G
1.Georgia State.....	30	163	5.43
2.Old Dominion.....	33	145	4.39
3.William & Mary.....	31	117	3.77
4.Hofstra.....	34	116	3.41
5.Towson.....	29	88	3.03
6.VCU.....	30	88	2.93
7.James Madison.....	33	88	2.67
8.Delaware.....	32	79	2.47
9.UNC Wilmington.....	31	73	2.35
10.George Mason.....	29	61	2.10
11.Northeastern.....	30	63	2.10
12.Drexel.....	31	57	1.84

**ASSISTS**

## Team	G	Assists	Avg/G
1.Georgia State.....	30	523	17.43
2.Old Dominion.....	33	497	15.06
3.James Madison.....	33	496	15.03
4.VCU.....	30	435	14.50
5.Hofstra.....	34	489	14.38
6.Delaware.....	32	437	13.66
7.Towson.....	29	396	13.66
8.Drexel.....	31	387	12.48
9.William & Mary.....	31	385	12.42
10.Northeastern.....	30	352	11.73
11.UNC Wilmington.....	31	327	10.55
12.George Mason.....	29	278	9.59

**STEALS**

## Team	G	Steals	Avg/G
1.Delaware.....	32	424	13.25
2.Towson.....	29	355	12.24
3.Old Dominion.....	33	353	10.70
4.Georgia State.....	30	277	9.23
5.Hofstra.....	34	305	8.97
6.VCU.....	30	235	7.83
7.William & Mary.....	31	240	7.74
8.Northeastern.....	30	232	7.73
9.James Madison.....	33	244	7.39
10.UNC Wilmington.....	31	222	7.16
11.George Mason.....	29	199	6.86
12.Drexel.....	31	210	6.77

**TURNOVER MARGIN**

## Team	G	TEAM	Avg	OPP	Avg	Margin
1.Delaware.....	32	436	13.6	713	22.3	+8.66
2.Towson.....	29	515	17.8	622	21.4	+3.69
3.Old Dominion.....	33	606	18.4	663	20.1	+1.73
4.James Madison.....	33	534	16.2	566	17.2	+0.97
5.Hofstra.....	34	574	16.9	601	17.7	+0.79
6.Northeastern.....	30	522	17.4	506	16.9	-0.53
7.VCU.....	30	569	19.0	548	18.3	-0.70
8.Drexel.....	31	492	15.9	461	14.9	-1.00
9.George Mason.....	29	512	17.7	452	15.6	-2.07
10.William & Mary.....	31	596	19.2	511	16.5	-2.74
11.UNC Wilmington.....	31	608	19.6	511	16.5	-3.13
12.Georgia State.....	30	614	20.5	520	17.3	-3.13

**ASSIST/TURNOVER RATIO**

## Team	G	Asst	Avg	Turn	Avg	Ratio
1.Delaware.....	32	437	13.7	436	13.6	1.00
2.James Madison.....	33	496	15.0	534	16.2	0.93
3.Hofstra.....	34	489	14.4	574	16.9	0.85
4.Georgia State.....	30	523	17.4	614	20.5	0.85
5.Old Dominion.....	33	497	15.1	606	18.4	0.82
6.Drexel.....	31	387	12.5	492	15.9	0.79
7.Towson.....	29	396	13.7	515	17.8	0.77
8.VCU.....	30	435	14.5	569	19.0	0.76
9.Northeastern.....	30	352	11.7	522	17.4	0.67
10.William & Mary.....	31	385	12.4	596	19.2	0.65
11.George Mason.....	29	278	9.6	512	17.7	0.54
12.UNC Wilmington.....	31	327	10.5	608	19.6	0.54

2006-07 Colonial Athletic Association  
CONFERENCE BASKETBALL STATISTICS  
Through games of Aug 31, 2007 (All games)

OFFENSIVE REBOUNDS

## Team	G	No.	Avg/G
1.James Madison.....	33	578	17.52
2.Old Dominion.....	33	571	17.30
3.Hofstra.....	34	547	16.09
4.VCU.....	30	459	15.30
5.Delaware.....	32	465	14.53
6.Towson.....	29	416	14.34
7.Georgia State.....	30	426	14.20
8.William & Mary.....	31	408	13.16
9.George Mason.....	29	377	13.00
10.UNC Wilmington.....	31	387	12.48
11.Drexel.....	31	367	11.84
12.Northeastern.....	30	344	11.47

DEFENSIVE REBOUNDS

## Team	G	No.	Avg/G
1.James Madison.....	33	881	26.70
2.Georgia State.....	30	800	26.67
3.William & Mary.....	31	793	25.58
4.Hofstra.....	34	856	25.18
5.Old Dominion.....	33	812	24.61
6.VCU.....	30	718	23.93
7.UNC Wilmington.....	31	730	23.55
8.George Mason.....	29	645	22.24
9.Towson.....	29	632	21.79
10.Delaware.....	32	694	21.69
11.Northeastern.....	30	632	21.07
12.Drexel.....	31	653	21.06

3-POINT FIELD GOALS MADE

## Team	G	3FG	Avg/G
1.William & Mary.....	31	196	6.32
2.Drexel.....	31	194	6.26
3.Northeastern.....	30	152	5.07
4.Hofstra.....	34	163	4.79
5.Georgia State.....	30	139	4.63
6.George Mason.....	29	130	4.48
7.Old Dominion.....	33	136	4.12
8.James Madison.....	33	132	4.00
9.Delaware.....	32	116	3.63
10.Towson.....	29	98	3.38
11.VCU.....	30	91	3.03
12.UNC Wilmington.....	31	88	2.84

**2006-07 Colonial Athletic Association  
CONFERENCE BASKETBALL STATISTICS  
Through games of Aug 31, 2007 (All games)**

STANDINGS	-----CONFERENCE-----				-----OVERALL-----				WINNING STREAK	
	W-L	Pct	PF	PA	W-L	Pct	PF	PA	Team	NO.
Old Dominion.....	17-1	.944	72.7	57.2	24-9	.727	70.5	62.5		
James Madison.....	16-2	.889	74.8	59.3	27-6	.818	72.5	59.7		
Delaware.....	16-2	.889	69.3	53.3	26-6	.813	68.8	55.9		
Hofstra.....	13-5	.722	64.2	58.9	26-8	.765	66.1	58.3		
William & Mary.....	10-8	.556	58.3	58.1	19-12	.613	60.6	57.8		
VCU.....	9-9	.500	63.5	66.7	17-13	.567	64.0	64.5		
Towson.....	8-10	.444	57.3	66.4	17-12	.586	60.0	62.6		
Georgia State.....	7-11	.389	67.4	69.8	15-15	.500	67.7	66.4		
Drexel.....	4-14	.222	55.9	65.3	10-21	.323	57.2	64.0		
UNC Wilmington.....	3-15	.167	57.1	66.1	8-23	.258	55.0	63.1		
Northeastern.....	3-15	.167	60.4	69.3	4-26	.133	61.4	71.7		
George Mason.....	2-16	.111	55.3	65.7	8-21	.276	57.7	65.3		

**TEAM SUMMARIES**

Team	G	PF-PA	Avg Score	Margin	FG-FGA	Pct	3FG-FGA	Pct	FT-FTA	Pct	RebF	RebA	Margin
Delaware.....	32	2202-1789	68.8-55.9	+12.9	810-1930	.420	116-351	.330	466-632	.737	1159	1098	+1.9
Drexel.....	31	1774-1985	57.2-64.0	-6.8	612-1679	.365	194-613	.316	356-481	.740	1020	1132	-3.6
George Mason.....	29	1674-1895	57.7-65.3	-7.6	576-1564	.368	130-423	.307	392-543	.722	1022	1085	-2.2
Georgia State.....	30	2031-1992	67.7-66.4	+1.3	768-1789	.429	139-405	.343	356-535	.665	1226	1194	+1.1
Hofstra.....	34	2249-1983	66.1-58.3	+7.8	784-1984	.395	163-487	.335	518-737	.703	1403	1223	+5.3
James Madison.....	33	2391-1969	72.5-59.7	+12.8	871-2029	.429	132-396	.333	517-743	.696	1459	1097	+11.0
Northeastern.....	30	1842-2151	61.4-71.7	-10.3	655-1726	.379	152-487	.312	380-503	.755	976	1244	-8.9
Old Dominion.....	33	2325-2062	70.5-62.5	+8.0	842-1999	.421	136-423	.322	505-755	.669	1383	1182	+6.1
Towson.....	29	1740-1814	60.0-62.6	-2.6	641-1693	.379	98-391	.251	360-579	.622	1048	1151	-3.6
UNC Wilmington.....	31	1705-1956	55.0-63.1	-8.1	602-1575	.382	88-334	.263	413-637	.648	1117	1145	-0.9
VCU.....	30	1920-1934	64.0-64.5	-0.5	679-1695	.401	91-300	.303	471-742	.635	1177	1121	+1.9
William & Mary.....	31	1879-1793	60.6-57.8	+2.8	645-1668	.387	196-544	.360	393-566	.694	1201	1195	+0.2

**ATTENDANCE**

Team	HOME GAMES	Avg	AWAY GAMES	Avg	NEUT GAMES	Avg	ALL GAMES	Avg
Delaware	14-18402	1314	16-18308	1144	2-6780	3390	32-43490	1359
Drexel	14-5699	407	15-10013	668	2-0	0	31-15712	507
George Mason	13-9131	702	14-19634	1402	2-0	0	29-28765	992
Georgia State	13-6666	513	14-11504	822	3-365	122	30-18535	618
Hofstra	14-12617	901	18-28607	1589	2-0	0	34-41224	1212
James Madison	14-28140	2010	15-20742	1383	4-4668	1167	33-53550	1623
Northeastern	13-3338	257	15-10228	682	2-0	0	30-13566	452
Old Dominion	15-53430	3562	14-25995	1857	4-2270	568	33-81695	2476
Towson	13-4290	330	15-10895	726	1-1390	1390	29-16575	572
UNC Wilmington	14-6515	465	14-8533	610	3-3788	1263	31-18836	608
VCU	13-5148	396	16-11593	725	1-0	0	30-16741	558
William & Mary	13-5046	388	16-12838	802	2-0	0	31-17884	577
<b>Totals</b>	<b>163-158422</b>	<b>972</b>	<b>182-188890</b>	<b>1038</b>	<b>28-19261</b>	<b>688</b>	<b>265-260138</b>	<b>982</b>

**2006-07 Colonial Athletic Association  
INDIVIDUAL BASKETBALL STATISTICS  
Through games of Aug 31, 2007 (All games)**

To be ranked, a player must appear in at least 75.0% of their team's games.

**SCORING**

##	Player-Team	Cl	G	FG	3FG	FT	Pts	Avg/G
1.	Smith, Tyresa-DELAWARE...		32	230	0	172	632	19.8
2.	Alexis, Meredith-JMU.....		33	239	2	127	607	18.4
3.	Roegiers-Jensen, Kel-GSU.		30	185	63	106	539	18.0
4.	Marginean, Gabriela-DREXE		31	184	2	145	515	16.6
5.	Young, Tamera-JMU.....		33	192	48	112	544	16.5
6.	Smallwood, Shaleyse-NU... JR		25	142	26	90	400	16.0
7.	Vaughn, Krystal-VCU.....	JR	28	160	0	118	438	15.6
8.	Kaylor, Kyra-W&M.....	JR	31	136	35	152	459	14.8
9.	Jordan, T.J.-ODU.....		33	156	101	66	479	14.5
10.	Gidden, Vanessa-HOFSTRA..		34	181	0	123	485	14.3
11.	McCollin, Cigi-HOFSTRA...		34	149	76	105	479	14.1
12.	Drake, Lori-UNCW.....		31	158	34	76	426	13.7
13.	Baker-Brice, Shanae-TOWSO	FR	29	144	24	86	398	13.7
14.	Hollingsworth, Q.-VCU....	SO	29	143	0	110	396	13.7
15.	Pablos, Lucia-NU.....	JR	30	143	14	104	404	13.5
16.	Fisher, Chrissy-DELAWARE.		32	167	38	55	427	13.3
17.	Wade, Lateisha-MASON.....		28	112	21	122	367	13.1
18.	James, Devin-W&M.....	JR	31	139	19	97	394	12.7
19.	Feldman, Ashlee-NU.....	SO	30	117	72	74	380	12.7
20.	Suber, Narissa-DREXEL....		31	123	83	59	388	12.5

**REBOUNDING**

##	Player-Team	Cl	G	OFF	DEF	TOT	Avg/G
1.	Alexis, Meredith-JMU.....		33	149	234	383	11.6
2.	Hollingsworth, Q.-VCU....	SO	29	96	176	272	9.4
3.	Kaylor, Kyra-W&M.....	JR	31	75	206	281	9.1
4.	Hodell, Stefanie-NU.....	JR	30	87	178	265	8.8
5.	Murphy, Lizanne-HOFSTRA..		34	92	204	296	8.7
6.	Head, Marcquitta-GSU.....		30	94	159	253	8.4
7.	Marginean, Gabriela-DREXE		31	97	156	253	8.2
8.	Drake, Lori-UNCW.....		31	95	157	252	8.1
9.	Young, Tamera-JMU.....		33	80	185	265	8.0
10.	Fisher, Chrissy-DELAWARE.		32	91	157	248	7.8
11.	Smith, Tyresa-DELAWARE...		32	97	144	241	7.5
12.	Gidden, Vanessa-HOFSTRA..		34	136	118	254	7.5
13.	Mahan, Holly-TOWSON.....	JR	29	85	130	215	7.4
14.	Harshaw, Lana-HOFSTRA....		33	102	126	228	6.9
15.	Vaughn, Krystal-VCU.....	JR	28	93	97	190	6.8
16.	James, Devin-W&M.....	JR	31	84	125	209	6.7
17.	Akintunde, Moni-MASON....		28	74	109	183	6.5
18.	McKeller, Danyzell-GSU...		28	62	115	177	6.3
19.	Taylor, Sahsha-UNCW.....		30	84	103	187	6.2
20.	Rawls, RaShay-GSU.....		30	88	94	182	6.1

**FIELD GOAL PCT (Min. 4.0 made per game)**

##	Player-Team	Cl	G	FG	FGA	Pct
1.	Head, Marcquitta-GSU.....		30	131	239	.548
2.	Hollingsworth, Q.-VCU....	SO	29	143	269	.532
3.	Alexis, Meredith-JMU.....		33	239	452	.529
4.	Harshaw, Lana-HOFSTRA....		33	139	296	.470
5.	Vaughn, Krystal-VCU.....	JR	28	160	341	.469
6.	Fisher, Chrissy-DELAWARE.		32	167	368	.454
7.	McCall, Shirley-JMU.....		26	114	256	.445
8.	Taylor, Sahsha-UNCW.....		30	142	319	.445
9.	Smith, Tyresa-DELAWARE...		32	230	521	.441
10.	Robinson, Kelly-TOWSON... SR		29	116	263	.441
11.	Pablos, Lucia-NU.....	JR	30	143	330	.433
12.	Marginean, Gabriela-DREXE		31	184	434	.424
13.	Kaylor, Kyra-W&M.....	JR	31	136	325	.418
14.	Drake, Lori-UNCW.....		31	158	384	.411
15.	Baker-Brice, Shanae-TOWSO	FR	29	144	351	.410

**ASSISTS**

##	Player-Team	Cl	G	Assists	Avg/G
1.	Benvenuto, Andrea-JMU....		33	223	6.76
2.	Roegiers-Jensen, Kel-GSU.		30	197	6.57
3.	Hollins, Brittany-GSU.....		30	157	5.23
4.	Smallwood, Shaleyse-NU... JR		25	103	4.12
5.	Jones, LaKea-VCU.....	JR	30	119	3.97
6.	Freeman, Alis-TOWSON.....	SO	29	111	3.83
7.	Stroh, Sarah-W&M.....	SR	31	117	3.77
8.	Williams, Niki-HOFSTRA...		34	123	3.62
9.	Pablos, Lucia-NU.....	JR	30	103	3.43
10.	DeHaven, Kyle-DELAWARE...		32	106	3.31
	Koshansky, Alena-DELAWARE		32	106	3.31
12.	Baker-Brice, Shanae-TOWSO	FR	29	91	3.14
13.	Smith, Shade-UNCW.....		31	97	3.13
14.	Walters, Jazzmin-ODU.....		32	100	3.13
15.	Cosel, Michele-VCU.....	SR	30	88	2.93

**FREE THROW PCT (Min. 2.0 made per game)**

##	Player-Team	Cl	G	FTM	FTA	Pct
1.	Feldman, Ashlee-NU.....	SO	30	74	82	.902
2.	Dickinson, Lesley-JMU....		33	86	98	.878
3.	Marginean, Gabriela-DREXE		31	145	169	.858
4.	Roegiers-Jensen, Kel-GSU.		30	106	129	.822
5.	McCollin, Cigi-HOFSTRA...		34	105	131	.802
6.	Wade, Lateisha-MASON.....		28	122	155	.787
7.	Triggs, Sherida-ODU.....		33	88	112	.786
8.	Smallwood, Shaleyse-NU... JR		25	90	115	.783
9.	Kaylor, Kyra-W&M.....	JR	31	152	195	.779
10.	Pablos, Lucia-NU.....	JR	30	104	134	.776
11.	James, Devin-W&M.....	JR	31	97	127	.764
12.	Murphy, Lizanne-HOFSTRA..		34	92	123	.748
13.	Young, Tamera-JMU.....		33	112	150	.747
14.	Jordan, T.J.-ODU.....		33	66	89	.742
15.	Smith, Tyresa-DELAWARE...		32	172	235	.732

**STEALS**

##	Player-Team	Cl	G	Steals	Avg/G
1.	Hollins, Brittany-GSU....		30	98	3.27
2.	DeHaven, Kyle-DELAWARE...		32	99	3.09
3.	Mahan, Holly-TOWSON.....	JR	29	83	2.86
4.	Baker-Brice, Shanae-TOWSO	FR	29	76	2.62
5.	Smith, Tyresa-DELAWARE...		32	82	2.56
6.	Koshansky, Alena-DELAWARE		32	81	2.53
7.	Freeman, Alis-TOWSON.....	SO	29	69	2.38
8.	Williams, Niki-HOFSTRA...		34	72	2.12
9.	Young, Tamera-JMU.....		33	68	2.06
10.	Kaylor, Kyra-W&M.....	JR	31	58	1.87
11.	Hodell, Stefanie-NU.....	JR	30	54	1.80
12.	Walters, Jazzmin-ODU.....		32	56	1.75
13.	Benvenuto, Andrea-JMU....		33	55	1.67
14.	Roegiers-Jensen, Kel-GSU.		30	48	1.60
15.	Fisher, Chrissy-DELAWARE.		32	51	1.59

**2006-07 Colonial Athletic Association  
INDIVIDUAL BASKETBALL STATISTICS  
Through games of Aug 31, 2007 (All games)**

**3-POINT FG PCT (Min. 1.5 made per game)**

## Player-Team	Cl	G	3FG	FGA	Pct
1.David, Tabitha-GSU.....		28	61	158	.386
2.Jordan, T.J.-ODU.....		33	101	283	.357
3.Roegiers-Jensen, Kel-GSU.		30	63	183	.344
4.McCollin, Cigi-HOFSTRA...		34	76	221	.344
5.Cosel, Michele-VCU.....	SR	30	55	163	.337
6.Suber, Narissa-DREXEL....		31	83	263	.316
7.Feldman, Ashlee-NU.....	SO	30	72	230	.313

**3-POINT FG MADE**

## Player-Team	Cl	G	3FG	Avg/G
1.Jordan, T.J.-ODU.....		33	101	3.06
2.Suber, Narissa-DREXEL....		31	83	2.68
3.Feldman, Ashlee-NU.....	SO	30	72	2.40
4.McCollin, Cigi-HOFSTRA...		34	76	2.24
5.David, Tabitha-GSU.....		28	61	2.18
6.Roegiers-Jensen, Kel-GSU.		30	63	2.10
7.Cosel, Michele-VCU.....	SR	30	55	1.83
8.Young, Tamera-JMU.....		33	48	1.45
9.Quigley, Casey-MASON.....		29	42	1.45
10.Portell, Courtney-W&M....	SO	26	37	1.42
11.Holness, Tracy Ann-MASON.		29	39	1.34
12.Stroh, Sarah-W&M.....	SR	31	39	1.26
13.Dickinson, Lesley-JMU....		33	41	1.24
14.Suber, Anora-DREXEL.....		31	38	1.23
15.Fisher, Chrissy-DELAWARE.		32	38	1.19

**BLOCKED SHOTS**

## Player-Team	Cl	G	Blocks	Avg/G
1.Head, Marcquitta-GSU.....		30	67	2.23
2.Benson, Tiffany-W&M.....	FR	31	67	2.16
3.Hollingsworth, Q.-VCU....	SO	29	37	1.28
4.Gidden, Vanessa-HOFSTRA..		34	43	1.26
5.Ransburg, Tamara-ODU.....		32	33	1.03
6.Ferguson, Farrah-DELAWARE		31	30	0.97
7.Stewart, Alex-UNCW.....		28	27	0.96
8.Green, Tiffany-ODU.....		33	31	0.94
9.Roegiers-Jensen, Kel-GSU.		30	27	0.90
10.Davis, Kandace-TOWSON....	FR	28	23	0.82
11.Kaylor, Kyra-W&M.....	JR	31	25	0.81
12.Carr, Kim-NU.....	FR	30	24	0.80
13.Smith, Vatai-GSU.....	JR	25	19	0.76
14.Alexis, Meredith-JMU.....		33	25	0.76
15.Taylor, Sahsha-UNCW.....		30	22	0.73

**ASSIST/TURNOVER RATIO (Min. 3.0 assists/game)**

## Player-Team	Cl	G	Asst	Avg Turn	Avg	Ratio	
1.Koshansky, Alena-DELAWARE		32	106	3.3	35	1.1	3.03
2.Benvenuto, Andrea-JMU....		33	223	6.8	104	3.2	2.14
3.DeHaven, Kyle-DELAWARE...		32	106	3.3	71	2.2	1.49
4.Williams, Niki-HOFSTRA...		34	123	3.6	84	2.5	1.46
5.Roegiers-Jensen, Kel-GSU.		30	197	6.6	143	4.8	1.38
6.Hollins, Brittany-GSU....		30	157	5.2	122	4.1	1.29
7.Jones, LaKea-VCU.....	JR	30	119	4.0	97	3.2	1.23
8.Smallwood, Shaleyse-NU...	JR	25	103	4.1	84	3.4	1.23
9.Walters, Jazzmin-ODU.....		32	100	3.1	85	2.7	1.18
10.Freeman, Alis-TOWSON.....	SO	29	111	3.8	99	3.4	1.12
11.Smith, Shade-UNCW.....		31	97	3.1	97	3.1	1.00
12.Baker-Brice, Shanae-TOWSO	FR	29	91	3.1	92	3.2	0.99
13.Stroh, Sarah-W&M.....	SR	31	117	3.8	119	3.8	0.98
14.Pablos, Lucia-NU.....	JR	30	103	3.4	108	3.6	0.95

**OFFENSIVE REBOUNDS**

## Player-Team	Cl	G	No.	Avg/G
1.Alexis, Meredith-JMU.....		33	149	4.52
2.Gidden, Vanessa-HOFSTRA..		34	136	4.00
3.Vaughn, Krystal-VCU.....	JR	28	93	3.32
4.Hollingsworth, Q.-VCU....	SO	29	96	3.31
5.Head, Marcquitta-GSU.....		30	94	3.13
6.Marginean, Gabriela-DREXE		31	97	3.13
7.Harshaw, Lana-HOFSTRA....		33	102	3.09
8.Drake, Lori-UNCW.....		31	95	3.06
9.Smith, Tyresa-DELAWARE...		32	97	3.03
10.Rawls, RaShay-GSU.....		30	88	2.93
11.Mahan, Holly-TOWSON.....	JR	29	85	2.93
12.Brown, Jennifer-JMU.....		33	96	2.91
13.Hodell, Stefanie-NU.....	JR	30	87	2.90
14.Triggs, Sherida-ODU.....		33	94	2.85
15.Fisher, Chrissy-DELAWARE.		32	91	2.84

**DEFENSIVE REBOUNDS**

## Player-Team	Cl	G	No.	Avg/G
1.Alexis, Meredith-JMU.....		33	234	7.09
2.Kaylor, Kyra-W&M.....	JR	31	206	6.65
3.Hollingsworth, Q.-VCU....	SO	29	176	6.07
4.Murphy, Lizanne-HOFSTRA..		34	204	6.00
5.Hodell, Stefanie-NU.....	JR	30	178	5.93
6.Young, Tamera-JMU.....		33	185	5.61
7.Head, Marcquitta-GSU.....		30	159	5.30
8.Drake, Lori-UNCW.....		31	157	5.06
9.Marginean, Gabriela-DREXE		31	156	5.03
10.Fisher, Chrissy-DELAWARE.		32	157	4.91
11.Smith, Tyresa-DELAWARE...		32	144	4.50
12.Mahan, Holly-TOWSON.....	JR	29	130	4.48
13.Roegiers-Jensen, Kel-GSU.		30	127	4.23
14.McKeller, Danyiell-GSU...		28	115	4.11
15.James, Devin-W&M.....	JR	31	125	4.03

**MINUTES PLAYED**

## Player-Team	Cl	G	Minutes	Avg/G
1.Suber, Narissa-DREXEL....		31	1165	37.58
2.Roegiers-Jensen, Kel-GSU.		30	1121	37.37
3.Hollins, Brittany-GSU....		30	1107	36.90
4.Stroh, Sarah-W&M.....	SR	31	1131	36.48
5.Smallwood, Shaleyse-NU...	JR	25	907	36.28
6.Pablos, Lucia-NU.....	JR	30	1080	36.00
7.James, Devin-W&M.....	JR	31	1096	35.35
8.Drake, Lori-UNCW.....		31	1089	35.13
9.Cosel, Michele-VCU.....	SR	30	1018	33.93
10.Baker-Brice, Shanae-TOWSO	FR	29	976	33.66
11.Murphy, Lizanne-HOFSTRA..		34	1143	33.62
12.Taylor, Sahsha-UNCW.....		30	1005	33.50
13.Kaylor, Kyra-W&M.....	JR	31	1038	33.48
14.Feldman, Ashlee-NU.....	SO	30	995	33.17
15.Benvenuto, Andrea-JMU....		33	1092	33.09