



# 2014 WOMEN'S VOLLEYBALL

November 17, 2014

## 2014 Big Sky Women's Volleyball Standings

Institution	North Conference			Overall			Games			Sets	Match Win by Set			Stk
	W	L	Pct	W	L	Pct.	H	A	N		3set	4set	5set	
^North Dakota	13	3	.812	25	8	.758	11-1	9-4	5-3	78-43	12-5	7-3	6-0	W7
^Northern Colorado	12	4	.750	19	9	.679	10-4	6-5	3-0	63-42	8-4	7-4	4-1	W4
^Idaho	11	5	.688	15	13	.536	7-4	6-6	2-3	58-47	8-4	6-5	1-4	L2
^Montana	6	10	.375	6	22	.214	3-10	3-7	0-5	32-76	0-13	2-4	4-5	L5
Eastern Washington	5	11	.312	9	20	.310	3-6	4-8	2-6	43-71	3-8	1-8	5-4	L7
Montana State	4	12	.250	7	21	.250	2-6	2-10	3-5	26-70	2-18	3-1	2-2	W2

Institution	South Conference			Overall			Games			Sets	Match Win by Set			Stk
	W	L	Pct	W	L	Pct	H	A	N		3set	4set	5set	
\$Idaho State	15	1	.938	21	8	.724	7-2	9-3	5-3	70-35	12-2	7-5	2-1	W11
^Northern Arizona	11	5	.688	20	7	.741	10-1	6-6	4-0	65-29	12-3	8-3	0-1	W1
^Portland State	6	8	.429	8	18	.308	3-4	3-9	2-5	37-58	5-8	2-7	1-3	L1
^Southern Utah	6	10	.375	14	14	.500	7-5	5-7	2-2	52-55	6-6	3-6	4-2	W1
Sacramento State	3	13	.188	8	23	.258	1-11	3-9	4-3	42-78	1-12	5-4	2-7	L1
Weber State	3	13	.188	7	24	.226	2-6	3-11	2-7	38-81	0-14	5-3	2-7	L3

\$ Regular season champion/tournament host.  
^ Clinched a spot in the Big Sky tournament.

## Coming up in the Big Sky

### 2014 Idaho Central Credit Union Big Sky Conference Championship Pocatello, Idaho

#### Thursday, Nov. 20 Quarterfinals

Match One - No. 2 North Dakota vs. No. 7 Montana - 10:30 a.m. MT

Match Two - No. 3 Northern Colorado vs. No. 6 Portland State - 1 p.m. MT

Match Three - No. 4 Idaho vs. No. 5 Northern Arizona - 5 p.m. MT

Match Four - No. 1 Idaho State vs. No. 8 Southern Utah - 7:30 p.m. MT

#### Friday, Nov. 21 Semifinals

Semifinal 1 - Winner Match One vs. Winner Match Two - 5 p.m. MT

Semifinal 2 - Winner Match Three vs. Winner Match Four - 7:30 p.m. MT

Saturday, Nov. 22  
Championship - 7:30 p.m. MT

## MEDIA INFORMATION

BIG SKY CONFERENCE VOLLEYBALL CONTACT  
Jason Ashcraft  
801.392.1978 x-19  
jashcraft@bigskyconference.org

#### BIG SKY CONFERENCE WEEKLY RELEASES

The Big Sky Conference media relations department produces a weekly volleyball release every Monday during the season. Media can receive the releases as a PDF document via email by contacting Jason Ashcraft at 801.392.1978 ext.19 or email at [jashcraft@bigskyconference.org](mailto:jashcraft@bigskyconference.org). Standings, statistics and notes are also available on the Big Sky web site at [www.bigskyconf.com](http://www.bigskyconf.com).

#### INTERNET

The official website of the Big Sky Conference can be accessed by visiting [www.bigskyconf.com](http://www.bigskyconf.com). Weekly game notes, news releases and standings are updated on the website.



## Last Week's Results

### November 13

Northern Colorado 3, Eastern Washington 1 (Nov 13, 2014 at Cheney, Wash.)  
 25-23,25-18,27-29,25-23  
 Portland State 3, Southern Utah 0 (Nov 13, 2014 at Portland, OR)  
 25-23,25-9,25-21  
 Sacramento State 3, Northern Arizona 1 (Nov 13, 2014 at Sacramento, Calif.)  
 28-26,19-25,26-24,25-23  
 North Dakota 3, Idaho 2 (Nov 13, 2014 at Moscow, Idaho)  
 25-22,25-15,21-25,21-25,15-11  
 Montana State 3, Weber State 1 (Nov 13, 2014 at Bozeman, MT)  
 25-15,19-25,25-16,25-16  
 Idaho State 3, Montana 2 (Nov 13, 2014 at Missoula, Mont.)  
 22-25,25-22,25-6,24-26,15-8

### November 15

North Dakota 3, Eastern Washington 2 (Nov 15, 2014 at Cheney, Wash.)  
 20-25,23-25,25-13,25-17,15-7  
 Northern Arizona 3, Portland State 0 (Nov 15, 2014 at Portland, OR)  
 25-18,25-15,25-19  
 Idaho State 3, Weber State 0 (Nov 15, 2014 at Ogden, Utah)  
 25-20,25-16,25-21  
 Montana State 3, Montana 0 (Nov 15, 2014 at Missoula, Mont.)  
 25-23,26-24,25-21  
 Southern Utah 3, Sacramento State 2 (Nov 15, 2014 at Sacramento, Calif.)  
 25-23,25-23,22-25,17-25,15-13  
 Northern Colorado 3, Idaho 1 (Nov 15, 2014 at Moscow, Idaho)  
 25-20,13-25,25-15,25-18

### Big Sky vs. Ranked Opponents

Sept. 3 - No. 13 Colorado State vs. Northern Colorado - L 0-3  
 Sept. 5 - No. 17 Arizona State vs. Idaho State - L 1-3  
 Sept. 5 - No. 4 Wisconsin vs. Northern Colorado - L 1-3  
 Sept. 15 - No. 14 Oregon vs. Portland State - L 1-3  
 Sept. 16 - No. 12 BYU vs. Idaho State - L 0-3  
 Sept. 18 - No. 23 Loyola Marymount vs. Portland State - L 0-3  
 Sept. 19 - No. 19 San Diego vs. Eastern Washington - L 0-3  
 Sept. 19 - No. 1 Stanford vs. Eastern Washington - L 0-3  
 Sept. 19 - No. 25 Hawai'i vs. Northern Arizona - L 0-3  
 Sept. 20 - No. 25 Hawai'i vs. Northern Arizona - L 0-3

### 2014 BIG SKY VOLLEYBALL POLL

Team	Points
T1. Idaho State	108 (4)
T1. Northern Arizona	108 (4)
3. Idaho	95 (2)
4. North Dakota	92 (2)
5. Northern Colorado	86
6. Portland State	84
7. Eastern Washington	60
8. Sacramento State	49
9. Montana	35
10. Montana State	33
11. Weber State	26
12. Southern Utah	16

(Number of first place votes in parenthesis)

### 2014 AVCA DIVISION I COACHES TOP 25 NOVEMBER 17, 2014

RANK	SCHOOL (FIRST-PLACE VOTES)
1	STANFORD (60)
2	WISCONSIN
3	TEXAS
4	PENN STATE
5	WASHINGTON
6	FLORIDA
7	NORTH CAROLINA
8	FLORIDA STATE
9	COLORADO STATE
10	ILLINOIS
11	NEBRASKA
12	BYU
13	ARIZONA
14	OREGON
15	KENTUCKY
16	PURDUE
17	UCLA
18	LONG BEACH STATE
19	COLORADO
20	OHIO STATE
21	DUKE
22	ARIZONA STATE
23	UTAH
24	OHIO

*OTHERS RECEIVING VOTES AND LISTED ON TWO OR MORE BALLOTS:* CREIGHTON 51; OREGON STATE 48; HAWAII 44; KANSAS STATE 43; LOYOLA MARYMOUNT 42; WESTERN KENTUCKY 26; KANSAS 24; ALABAMA 16; OKLAHOMA 16; IOWA STATE 10



## Big Sky Volleyball SID Info.

Eastern Washington - Madelin Bell  
Phone: 509-359-6333  
Email: stuath03@ewu.edu

Idaho - Seth Pringle  
Phone: 208-885-7065  
Email: springle@uidaho.edu

Idaho State - Matt Gittins  
Phone: 208-479-0923  
Email: gittmatt@isu.edu

Montana - Joel Carlson  
Phone: 406-243-5414  
Email: Joel.Carlson@mso.umt.edu

Montana State - Tom Schulz  
Phone: 406-994-5130  
Email: tschulz@msubobcats.com

North Dakota - Mitch Wigness  
Phone: 701-777-4210  
Email: mitchell.wigness@athletics.und.edu

Northern Arizona - Stayson Isobe  
Phone: 928-523-6330  
Email: Stayson.Isobe@nau.edu

Northern Colorado - Ryan Pfeifer  
Phone: 970-351-3645  
Email: Ryan.Pfeifer@unco.edu

Portland State - Ryan McCall  
Phone: 503-725-5744  
Email: Ryan.McCall@pdx.edu

Sacramento State - Ryan Bjork  
Phone: 916-278-7426  
Email: rbjork@csus.edu

Southern Utah - Chanel Barnes  
Phone: 435-817-7798  
Email: sportsinfo@suu.edu

Weber State - Tyson Jex  
Phone: 801-626-8528  
Email: tysonjex@mail.weber.edu

## This Week On WatchBigSky.com

Catch all of this week's Big Sky matches on WatchBigSky.com

### Thursday, Nov. 20

- *Match One* - No. 2 North Dakota vs. No. 7 Montana - 10:30 a.m. MT
- *Match Two* - No. 3 Northern Colorado vs. No. 6 Portland State - 1 p.m. MT
- *Match Three* - No. 4 Idaho vs. No. 5 Northern Arizona - 5 p.m. MT
- *Match Four* - No. 1 Idaho State vs. No. 8 Southern Utah - 7:30 p.m. MT

### Friday, Nov. 21

- Semifinals
- Semifinal 1 - 5 p.m. MT
- Semifinal 2 - 7:30 p.m. MT

### Saturday, Nov. 22

- Championship - 7:30 p.m. MT

All Times local and subject to change

# Don't Miss a Moment of Big Sky Action!

## Download the FREE Watch Big Sky App Today

### Live Stream Over 400 Events

- Football
- Volleyball
- Women's Basketball
- Men's Basketball



Scan this QR Code with your smart phone to download the app!

www.bigskyconf.com - www.watchbigsky.com

## BIG SKY WEBSITES

Eastern Washington - goeags.com

Northern Colorado - uncbeats.com

Idaho - govandals.com

Portland State - goviks.com

Idaho State - isubengals.com

Sacramento State - hornetsports.com

Montana - gogriz.com

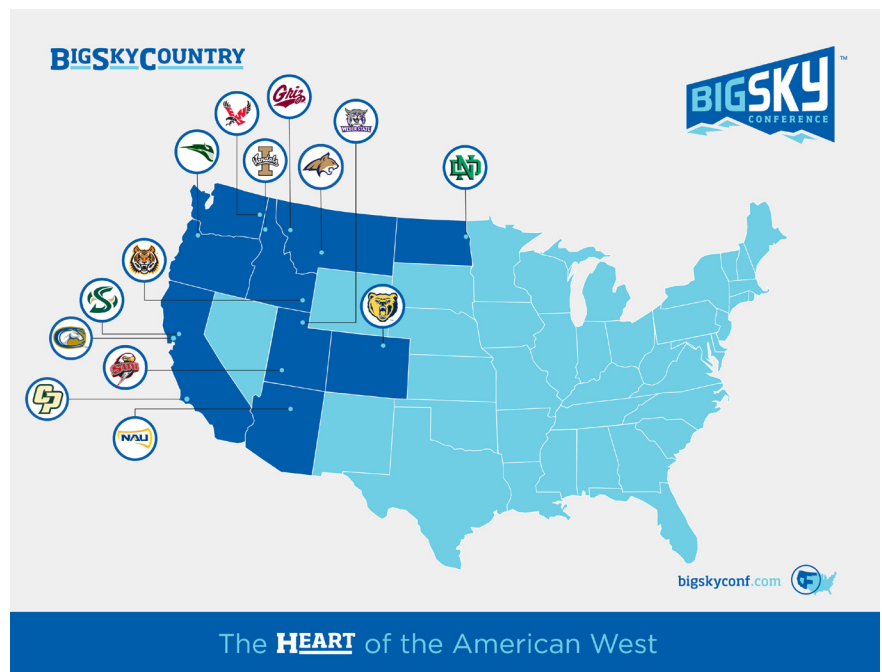
Southern Utah - suutbirds.com

Montana State - msbobcats.com

Weber State - weberstatesports.com

North Dakota - undsports.com

Northern Arizona - nauathletics.com



TWITTER: @BIGSKYCONF

WWW.FACEBOOK.COM/BIGSKYCONF



**Big Sky Conference Volleyball • November 17, 2014**  
**2014 BIG SKY CHAMPIONSHIP**



**Thursday, Nov. 20**

**Quarterfinals**

Match One - No. 2 North Dakota vs. No. 7 Montana - 10:30 a.m. MT

Match Two - No. 3 Northern Colorado vs. No. 6 Portland State - 1 p.m. MT

Match Three - No. 4 Idaho vs. No. 5 Northern Arizona - 5 p.m. MT

Match Four - No. 1 Idaho State vs. No. 8 Southern Utah - 7:30 p.m. MT

**Friday, Nov. 21**

**Semifinals**

Semifinal 1 - Winner Match One vs. Winner Match Two - 5 p.m. MT

Semifinal 2 - Winner Match Three vs. Winner Match Four - 7:30 p.m. MT

**Saturday, Nov. 22**

Championship - Semifinal Winners - 7:30 p.m. MT

***All Matches Available at [WatchBigSky.com](http://WatchBigSky.com)***





# Big Sky Conference Volleyball • November 17, 2014

## 2014 BIG SKY CHAMPIONSHIP



No. 7 Montana

**Quarterfinal 1**  
**Thursday, Nov. 20**  
**10:30 a.m.**

No. 2 North Dakota

No. 6 Portland State

**Quarterfinal 2**  
**Thursday, Nov. 20**  
**1 p.m.**

No. 3 Northern Colorado

Hosted by Idaho State University • November 20-22

Match 1 Winner

**Semifinal 1**  
**Friday, Nov. 21**  
**5 p.m.**

Winner of Semifinal 1

Match 2 Winner

**Championship**  
**Match**

**Saturday, Nov. 22**  
**7:30 p.m.**

**BIG SKY CHAMPION**

*All-times Mountain*

No. 5 Northern Arizona

**Quarterfinal 3**  
**Thursday, Nov. 20**  
**5 p.m.**

No. 4 Idaho

Match 3 Winner

**Semifinal 2**  
**Friday, Nov. 21**  
**7:30 p.m.**

Winner of Semifinal 2

No. 8 Southern Utah

**Quarterfinal 4**  
**Thursday, Nov. 20**  
**7:30 p.m.**

No. 1 Idaho State

Match 4 Winner

## Cunningham Earns Player of the Week Honor

Northern Colorado's Kendra Cunningham earned her second Big Sky Player of the Week award after helping lead the Bears to two crucial conference wins this weekend.

The junior from Eaton, Colo., blasted 16 kills and dove for 15 digs in the Bears' 3-1 win over Eastern Washington on Thursday. Cunningham's double-double against EWU was her 14th of the season and second-most in the Big Sky Conference. Saturday, Cunningham was just one dig shy of another double-double as she posted 15 kills and nine digs in UNC's 3-1 win at Idaho. With the win, UNC clinched a No. 3 seed in the Big Sky Conference tournament.

She totaled 31 kills, 24 digs and eight block assists in the two matches. Her 31 kills pushed her over the 300-kill mark on the season.

The 2014 Idaho Central Credit Union Big Sky Conference Championship begins Thursday, November 20 at Idaho State University. The Bears will face No. 6 seed Portland State Thursday at approximately 1 p.m. Mountain time.

### 2014 Big Sky VOLLEYBALL PLAYERS OF THE WEEK

Sept. 1 - Jensen Barton, NAU  
Sept. 8 - Nikki Husfeldt, UND  
Sept. 15 - Alyssa Schultz, Idaho  
Sept. 22 - Kendra Cunningham, UNC  
Sept. 29 - Chelsea Moser, UND  
Oct. 6 - Meredith Coba, Idaho  
Oct. 13 - Sydney Kemper, NAU  
Oct. 20 - Ashley Guthrie, UNC  
Oct. 27 - Capri Richardson, Montana  
Nov. 3 - Hayley Farrer, ISU  
Nov. 10 - Janae Vander Ploeg, NAU  
Nov. 17 - Kendra Cunningham, UNC

---

---

## Last Week's Top Performers

**Chelsea Moser, North Dakota** - Moser helped North Dakota to a spotless 6-0 mark in five-set matches this season with a pair of road five-setters this week. UND defeated Idaho Thursday, then rallied from down 0-2 Saturday to take out Eastern Washington and run its season-long winning streak to seven. Moser killed a career-high 15 balls and added seven total blocks in Thursday's win against the Vandals as UND won the season series with UI, both in five sets. She hit .619 in the win, needing just 21 swings and committing just a pair of attack errors. On Saturday, Moser collected eight more kills and six more total blocks, including finishing the match with a kill to complete the comeback against the Eagles. With the win, North Dakota etched its 25th win, tied for most-ever by a UND team through the regular season and gave North Dakota the Big Sky Conference North Division title and the No. 2 seed in the upcoming league tournament.

**Ana Jakovljevic, Eastern Washington** - Jakovljevic averaged 2.22 kills per set and 3.22 digs per set this past week while hitting .154 in Eastern's two matches. She recorded her third career double-double in Thursday's match against Northern Colorado, recording 12 kills and 14 digs. She swung at a .273 clip versus the Bears, recording just three errors on 33 swings. On Saturday against North Dakota, she tallied eight kills on 32 swings to go along with 15 digs and two blocks.

**Alyssa Schultz, Idaho** - Alyssa Schultz led the Vandals with a .385 hitting percentage in her final home two home matches of her career. She totaled 17 kills, five blocks and two aces in nine sets last week. She started the weekend with 11 kills and one mishit in 24 swings against North Dakota. Her .417 attack percentage led the Vandals, as their comeback fell short against UND. Schultz followed up on Saturday with six kills and a .333 percentage on Senior Night against Northern Colorado. Schultz will wrap up her career at Idaho this week at the Big Sky Tournament. The senior has recorded 892 career kills, while hitting a school record .347. Her .349 season attack percentage currently stands as the fourth-best single-season hitting percentage in school history.

**Remo Gaogao, Southern Utah** - Gaogao posted a double-double (18 kills and 19 digs) in the Thunderbirds' five-set win at Sacramento State on Saturday. She was just one dig shy of a double-double in Thursdays loss at Portland State with 10 kills and 9 digs.



# Big Sky Conference Volleyball • November 17, 2014

## STATISTICAL LEADERS

### CONFERENCE LEADERS BY CLASS - ALL MATCHES

#### Hitting Percentage

Senior - Alyssa Shultz, Idaho - .349  
 Junior - Natalee Godfrey, MSU - .342  
 Sophomore - Ashley Guthrie, UNC - .330  
 Freshman - Faith Dooley, UND - .322

#### Kills

Senior - Audrey Biggs, WSU - 4.15  
 Junior - Janae Vander Ploeg, NAU - 3.17  
 Sophomore - Kennadie Clute, MSU - 3.72  
 Freshman - Remo Gaogao, SUU - 3.07

#### Assists

Senior - Nikki Husfeldt, UND - 10.39  
 Junior - Meredith Coba, UI - 11.07  
 Sophomore - Jensen Barton, NAU - 10.73  
 Freshman - Faith Ma'afala - SUU - 10.47

#### Digs

Senior - Kasmira Clark, PSU - 4.65  
 Junior - McKenzie Hart, UND - 4.76  
 Sophomore - Sariah Palaez, SUU - 5.21  
 Freshman - none

#### Aces

Senior - Kylee Sessions, ISU, - 0.36  
 Junior - Jenae Vander Ploeg, NAU - 0.30  
 Sophomore - Jensen Barton, NAU - 0.36  
 Freshman - Katie Elgan, SUU - 0.37

#### Blocks

Senior - Taylor Stephenson, NAU - 1.06  
 Junior - Payton Bock, NAU - 1.33  
 Sophomore - Meagan Thompson, WSU - 1.18  
 Freshman - Faith Dooley, UND - 1.36

### CONFERENCE INDIVIDUAL LEADERS - ALL MATCHES

#### HITTING %

Player	Team	Cl	G	Kills	Errs	Total	Pct
SCHULTZ, Alyssa	UI	SR	103	227	39	538	.349

#### KILLS

Player	Team	Cl	G	No.	Per Game
BIGGS, Audrey	WSU	SR	111	461	4.15

#### ASSISTS

Player	Team	Cl	G	No.	Per Game
COBA, Meredith	UI	JR	101	1118	11.07

#### SERVICE ACES

Player	Team	Cl	G	No.	Per Game
ELGAN, Katie	SUU	FR	83	31	0.37

#### BLOCKS

Player	Team	Cl	G	Solo	Asst	Total	Per Game
DOOLEY, Faith	UND	FR	118	31	129	160.0	1.36

#### DIGS

Player	Team	Cl	G	No.	Per Game
PELAEZ, Sariah	SUU	SO	107	558	5.21

### CONFERENCE TEAM LEADERS - ALL MATCHES

**HITTING %:** Northern Arizona -.253

**ASSISTS:** Northern Arizona - 12.80

**KILLS:** Northern Colorado - 13.69

**BLOCKS:** Northern Arizona - 2.92

**SERVICE ACES:** Idaho State - 1.58

**DIGS:** North Dakota - 17.26

### DOUBLE-DOUBLE LEADERS (14 OR MORE)

VANDER PLOEG, Janae-NAU (15)  
 12 kills, 20 digs at HBU (Aug 29, 2014)  
 15 kills, 15 digs at Tulsa (Aug 30, 2014)  
 10 kills, 25 digs vs AMCC (Sep 05, 2014)  
 19 kills, 15 digs at LU (Sep 05, 2014)  
 17 kills, 15 digs vs UC Riverside (Sep 12, 2014)  
 10 kills, 12 digs vs Albany (Sep 13, 2014)  
 20 kills, 14 digs vs Portland State (Sep 25, 2014)  
 10 kills, 14 digs at Southern Utah (Oct 04, 2014)  
 11 kills, 11 digs vs Montana (Oct 09, 2014)  
 10 kills, 16 digs at Northern Colorado (Oct 25, 2014)  
 17 kills, 19 digs vs Idaho State (Oct 30, 2014)  
 13 kills, 13 digs vs Eastern Washington (Nov 06, 2014)  
 14 kills, 13 digs vs So. Utah (Nov 08, 2014)  
 12 kills, 17 digs at Sac State (Nov 13, 2014)  
 11 kills, 15 digs at Portland State (Nov 15, 2014)

CUNNINGHAM, Kendra-NC (14)  
 13 kills, 12 digs vs Eastern Illinois (Aug 29, 2014)  
 17 kills, 13 digs vs Wisconsin (Sep 05, 2014)  
 13 kills, 10 digs at AMCC (Sep 13, 2014)  
 13 kills, 10 digs vs Hampton (Sep 19, 2014)  
 19 kills, 11 digs vs UC Davis (Sep 20, 2014)  
 16 kills, 19 digs vs Wyoming (Sep 20, 2014)  
 15 kills, 12 digs vs Idaho (Sep 25, 2014)  
 20 kills, 11 digs vs Eastern Washington (Sep 27, 2014)  
 21 kills, 14 digs at Montana (Oct 4, 2014)  
 16 kills, 13 digs at Idaho State (Oct 10, 2014)

14 kills, 13 digs at Weber State (Oct 11, 2014)  
 10 kills, 13 digs vs Southern Utah (Oct 23, 2014)  
 13 kills, 22 digs vs Northern Arizona (Oct 25, 2014)  
 16 kills, 15 digs at Eastern Washington (Nov 13, 2014)

ROBINSON, Lexi-UND (14)  
 16 kills, 13 digs at Auburn (Aug 29, 2014)  
 19 kills, 13 digs vs Ark. State (Aug 29, 2014)  
 11 kills, 13 digs vs Tulane (Sep 05, 2014)  
 13 kills, 11 digs vs South Dakota (Sep 05, 2014)  
 11 kills, 11 digs vs South Dakota (Sep 06, 2014)  
 12 kills, 10 digs at ND State (Sep 09, 2014)  
 13 kills, 12 digs vs E Washington (Sep 25, 2014)  
 14 kills, 15 digs vs Idaho (Sep 27, 2014)  
 13 kills, 16 digs at Montana State (Oct 04, 2014)  
 12 kills, 23 digsvs Southern Utah (Oct 25, 2014)  
 17 kills, 20 digs at Sac State (Oct 30, 2014)  
 13 kills, 21 digs vs No. Col. (Nov 01, 2014)  
 11 kills, 10 digs vs Mont. State (Nov 06, 2014)  
 13 kills, 20 digs at Idaho (Nov 13, 2014)

2014 Big Sky Conference Double-Doubles as of Nov. 18, 2014	
VANDER PLOEG, Janae-NAU.....	15
CUNNINGHAM, Kendra-NC.....	14
ROBINSON, Lexi-UND.....	14
MA'AFALA, Faith-SUU.....	13
FARRER, Hayley-ISU.....	13
GAOGAO, Remo-SUU.....	12
KEMPER, Sydney-NAU.....	12
KURTZ, Kennedy-SAC.....	12
LYMAN, Tressa-ISU.....	11
BARTON, Jensen-NAU.....	11
STANLEY, Morgan-SAC.....	11
HUSFELDT, Nikki-UND.....	10
CORRADO, Cheyne-PSU.....	8
Peterson, Katelyn-UI.....	7
Coba, Meredith-UI.....	6
GUTHRIE, Ashley-NC.....	6
6 w/5	
5 w/4	
7 w/3	
4 w/2	
7 w/1	



## CONFERENCE INDIVIDUAL LEADERS - CONF. ONLY

### HITTING PERCENTAGE (Minimum .200/3.0 attacks per game)

	Player	Team	Cl	G	Kills	Errs	Total	Pct
1.	Schultz, Alyssa	UI	SR	57	129	17	300	.373
2.	GODFREY, Natalee	MSU	JR	53	155	43	302	.371
3.	DOOLEY, Faith	UND	FR	61	173	39	377	.355
4.	RICHARDSON, C.	UM	JR	62	142	39	299	.344
5.	STRONG, Brianna	NC	SR	45	129	35	273	.344
6.	HARRINGTON, W.	ISU	SR	59	138	45	286	.325
7.	FERMANTEZ, Talia	EWU	SR	63	149	51	302	.325
8.	GUTHRIE, Ashley	NC	SO	59	77	13	201	.318
9.	KEMPER, Sydney	NAU	SR	56	196	56	443	.316
10.	FILER, Makenzie	ISU	JR	58	155	46	359	.304

### KILLS (Minimum 2.00 per game)

	Player	Team	Cl	G	No.	Per Game
1.	BIGGS, Audrey	WSU	SR	58	223	3.84
2.	CLUTE, Kennadie	MSU	SO	49	181	3.69
3.	CORRADO, Cheyenne	PSU	SR	51	184	3.61
4.	LYMAN, Tressa	ISU	SO	59	211	3.58
5.	KEMPER, Sydney	NAU	SR	56	196	3.50
6.	CUNNINGHAM, K.	NC	JR	59	201	3.41
7.	LOVETT, Sloan	SAC	JR	64	207	3.23
8.	VANDER PLOEG, J.	NAU	JR	56	181	3.23
9.	GAOGAO, Remo	SUU	FR	65	200	3.08
10.	GODFREY, Natalee	MSU	JR	53	155	2.92

### ASSISTS (Minimum 5.00 per game)

	Player	Team	Cl	G	No.	Per Game
1.	Coba, Meredith	UI	JR	55	635	11.55
2.	GUTHRIE, Ashley	NC	SO	59	677	11.47
3.	HARRINGTON, K	MSU	SO	53	581	10.96
4.	FARRER, Hayley	ISU	SO	59	643	10.90
5.	HUSFELDT, Nikki	UND	SR	56	603	10.77
6.	BARTON, Jensen	NAU	SO	55	591	10.75
7.	MA'AFALA, Faith	SUU	FR	65	662	10.18
8.	KURTZ, Kennedy	SAC	FR	64	634	9.91
9.	CHRISTENSEN, T	WSU	FR	59	551	9.34
10.	CLARK, Erin	PSU	FR	60	389	6.48

### SERVICE ACES (Minimum 0.10 per game)

	Player	Team	Cl	G	No.	Per Game
1.	SESSIONS, Kylee	ISU	SR	55	25	0.45
2.	ELGAN, Katie	SUU	FR	58	26	0.45
3.	BARTON, Jensen	NAU	SO	55	19	0.35
4.	KURTZ, Kennedy	SAC	FR	64	21	0.33
5.	FILER, Makenzie	ISU	JR	58	19	0.33
6.	LYMAN, Tressa	ISU	SO	59	18	0.31
7.	VESTMAN, Dana	MSU	FR	53	16	0.30
8.	VAOIFI, Ashlee	EWU	FR	54	15	0.28
9.	ROBINSON, M	UM	SO	62	17	0.27
10.	SORENSEN, Amy	ISU	SR	59	16	0.27

### BLOCKS (Minimum 0.80 per game)

Game	Player	Team	Cl	G	Solo	Asst	Total	Per
1.	FILER, Makenzie	ISU	JR	58	10	81	91.0	1.57
2.	BOCK, Payton	NAU	JR	56	12	68	80.0	1.43
3.	DOOLEY, Faith	UND	FR	61	19	61	80.0	1.31
4.	O'BRIEN, Katie	PSU	SR	60	8	65	73.0	1.22
5.	THOMPSON, M	WSU	SO	59	13	57	70.0	1.19
6.	RICHARDSON, C	UM	JR	62	13	60	73.0	1.18
7.	STEPHENS, Taylor	NAU	SR	38	13	31	44.0	1.16
8.	MOSER, Chelsea	UND	SO	60	10	59	69.0	1.15
9.	SPAUSTAT, Andrea	NC	SR	59	8	55	63.0	1.07
10.	Schultz, Alyssa	UI	SR	57	7	53	60.0	1.05

### DIGS (Minimum 1.00 per game)

Player	Team	Cl	G	No.	Per Game
--------	------	----	---	-----	----------

1.	GARCIA, Megan	NC	JR	59	303	5.14
2.	CLARK, Kasimira	PSU	SR	60	306	5.10
3.	PELAEZ, Sariah	SUU	SO	65	331	5.09
4.	HART, McKenzie	UND	JR	61	286	4.69
5.	SCHLATTER, Kasey	MSU	SR	53	235	4.43
6.	TARBOX, McKay	WSU	SR	59	252	4.27
7.	WILLIAMS, Stacia	NAU	JR	53	222	4.19
8.	Ellis, Jenna	UI	JR	59	243	4.12
9.	SESSIONS, Kylee	ISU	SR	55	218	3.96
10.	SKALBECK, Lexie	SAC	SO	64	253	3.95

### POINTS

	Player	Team	Cl	G	K	SA	BS	BA	Points	Avg/G
1.	BIGGS, Audrey	WSU	SR	58	223	10	5	14	245.0	4.22
2.	LYMAN, Tressa	ISU	SO	59	211	18	2	34	248.0	4.20
3.	KEMPER, Sydney	NAU	SR	56	196	9	2	55	234.5	4.19
4.	CORRADO, Cheyenne	PSU	SR	51	184	11	0	19	204.5	4.01
5.	CLUTE, Kennadie	MSU	SO	49	181	4	1	10	191.0	3.90
6.	FILER, Makenzie	ISU	JR	58	155	19	10	81	224.5	3.87
7.	CUNNINGHAM, K	NC	JR	59	201	10	2	29	227.5	3.86
8.	VANDER PLOEG, J	NAU	JR	56	181	11	14	19	215.5	3.85
9.	LOVETT, Sloan	SAC	JR	64	207	17	3	34	244.0	3.81
10.	DOOLEY, Faith	UND	FR	61	173	0	19	61	222.5	3.65

## CONFERENCE TEAM LEADERS - CONF. ONLY

**HITTING %:** Idaho - .253

**ASSISTS:** Northern Colorado - 13.42

**KILLS:** Northern Colorado - 14.46

**BLOCKS:** Northern Arizona - 3.26

**SERVICE ACES:** Idaho State - 1.75

**DIGS:** North Dakota - 17.57

## BIG SKY IN THE NCAA RANKINGS (TOP 50)

Team Cat.	Big Sky Team	Rank	Indv. Cat.	Player-Team	Rank
Aces Per Set	ISU	19	Asst./Set	Meredith Coba-UI	33
	SUU	50			
Blocks/Set	NAU UND	13	Blk/Set	Faith Dooley-UND	27
		25		Payton Bock - NAU	29
				Makenzie Filer-ISU	30
Digs/Set	UND NAU SUU	19	Digs/Set	Sariah Pelaez-SUU	20
		30			
		39			
Kills/Set	SUU	39	Kills/Set	Audrey Biggs-WSU	41
Hitting %	NAU	42	Pts/ Set	Audrey Biggs-WSU	45
Match W/L %	UND	44	Service Aces	Kennedy Kurtz-SAC	22
Opp. Hit %	NAU UND	12	Tot. Asst.	Nikki Husfeldt-UND	28
		27		Kennedy Kurtz-SAC	33
				Taylor Christensen-WSU	40
Team Assists	UND	16		Faith Ma'afala-SUU	50
Team Digs	UND	8	Tot. Block	Faith Dooley-UND	5
				Megan Thompson-WSU	23
Team Kills	UND	31		Makenzie Filer-ISU	39
Team Aces	ISU SAC SUU	23	Tot. Digs	Mckenzie Hart-UND	22
		28		Sariah Palaez-SUU	24
		45			
Tm. Tot. Attack	UND	15	Tot. Kills	Audrey Biggs-WSU	20
Tm Tot. Blocks	UND WSU NAU	5			
		23			
		29			





## EASTERN WASHINGTON (9-16, 5-7)

## IDAHO (13-11, 9-3)

## IDAHO STATE (17-8, 11-1)

### August

29	vs. Fairfield <sup>1</sup>	W 3-1
29	vs. North Carolina St. <sup>1</sup>	W 3-2
30	vs. Coastal Carolina <sup>1</sup>	L 1-3
31	at UNC-Wilmington <sup>1</sup>	L 0-3

### September

2	at College of Charleston	W 3-2
5	at High Point	W 3-2
12	vs. Portland <sup>2</sup>	L 1-3
13	vs. Missouri <sup>2</sup>	L 1-3
13	vs. Boise State <sup>2</sup>	L 0-3
<b>16</b>	<b>Seattle</b>	<b>L 2-3</b>
18	vs. Cal St. Northridge <sup>3</sup>	L 0-3
19	at San Diego <sup>3</sup>	L 0-3
19	vs. Stanford <sup>3</sup>	L 0-3
25	*at North Dakota	L 1-3
27	*at Northern Colorado	W 3-2

### October

<b>2</b>	<b>*Southern Utah</b>	<b>L 2-3</b>
<b>3</b>	<b>*Idaho</b>	<b>L 0-3</b>
9	*at Sacramento State	W 3-2
11	*at Portland State	L 0-3
<b>16</b>	<b>*Montana State</b>	<b>W 3-0</b>
<b>17</b>	<b>*Montana</b>	<b>W 3-0</b>
<b>23</b>	<b>*Idaho State</b>	<b>L 0-3</b>
<b>25</b>	<b>*Weber State</b>	<b>W 3-0</b>
30	*at Montana	L 1-3

### November

1	*at Montana State	L 2-3
6	*at Northern Arizona	L 1-3
8	*at Idaho	L 1-3
<b>13</b>	<b>*Northern Colorado</b>	<b>L 1-3</b>
<b>15</b>	<b>*North Dakota</b>	<b>L 2-3</b>

\*Big Sky Match

**Home matches in bold**

<sup>1</sup>UNC Wilmington Tournament

<sup>2</sup>Idaho Tournament

<sup>3</sup>San Diego Tournament

All times local to site/subject to change

### August

29	vs. Oklahoma <sup>1</sup>	L 0-3
29	at Florida <sup>1</sup>	L 0-3
30	vs. Georgia Southern <sup>1</sup>	W 3-1

### September

4	at Long Beach State	L 1-3
5	at UC Irvine <sup>2</sup>	L 1-3
5	vs. Utah State <sup>2</sup>	L 1-3
6	vs. Pepperdine <sup>2</sup>	W 3-1
<b>11</b>	<b>Missouri<sup>3</sup></b>	<b>L 3-2</b>
<b>12</b>	<b>Boise State<sup>3</sup></b>	<b>W 3-1</b>
<b>13</b>	<b>Portland<sup>3</sup></b>	<b>W 3-1</b>
18	at Washington State <sup>4</sup>	L 1-3
<b>19</b>	<b>vs. Loyola Marymount<sup>4</sup></b>	<b>L 0-3</b>
25	*at Northern Colorado	W 3-1
27	*at North Dakota	L 1-3

### October

<b>2</b>	<b>*Northern Arizona</b>	<b>W 3-0</b>
3	*at Eastern Washington	W 3-0
9	*at Portland State	L 2-3
11	*at Sacramento State	W 3-0
<b>16</b>	<b>*Montana</b>	<b>W 3-0</b>
<b>17</b>	<b>*Montana State</b>	<b>W 3-0</b>
<b>23</b>	<b>*Weber State</b>	<b>W 3-0</b>
<b>25</b>	<b>*Idaho State</b>	<b>L 0-3</b>
30	*at Montana State	W 3-0

### November

1	*at Montana	W 3-0
6	*at Southern Utah	W 3-2
<b>8</b>	<b>*Eastern Washington</b>	<b>W 3-1</b>
<b>13</b>	<b>*North Dakota</b>	<b>L 2-3</b>
<b>15</b>	<b>*Northern Colorado</b>	<b>L 1-3</b>

\*Big Sky Match

**Home matches in bold**

<sup>1</sup>Active Ankle Challenge

<sup>2</sup>UC Irvine Tournament

<sup>3</sup>Idaho Tournament

<sup>4</sup>Washington State Tournament

All times local to site/subject to change

### August

29	at Utah State <sup>1</sup>	L 1-3
30	vs. Saint Mary's <sup>1</sup>	W 3-1
30	vs. Oregon State <sup>1</sup>	L 0-3

### September

5	vs. UAB <sup>2</sup>	W 3-0
5	at Arizona State <sup>2</sup>	L 1-3
6	vs. Iowa <sup>2</sup>	L 1-3
12	at Colorado <sup>3</sup>	L 1-3
13	vs. Butler <sup>3</sup>	L 1-3
13	vs. Robert Morris <sup>3</sup>	W 3-0
<b>16</b>	<b>BYU</b>	<b>L 0-3</b>
19	at Utah Valley <sup>4</sup>	W 3-0
20	vs. Portland <sup>4</sup>	W 3-0
20	vs. UC Riverside <sup>4</sup>	W 3-1
25	*Montana State	W 3-0
27	*Weber State	W 3-0

### October

2	*at Sacramento State	W 3-1
4	*at Portland State	W 3-0
<b>10</b>	<b>*Northern Colorado</b>	<b>L 2-3</b>
<b>11</b>	<b>*North Dakota</b>	<b>W 3-0</b>
<b>16</b>	<b>*Southern Utah</b>	<b>W 3-1</b>
<b>18</b>	<b>*Northern Arizona</b>	<b>W 3-1</b>
23	*at Eastern Wash.	W 3-0
25	*at Idaho	W 3-0
30	*at Northern Arizona	W 3-2

### November

1	*at Southern Utah	W 3-1
<b>6</b>	<b>*Portland State</b>	<b>W 3-1</b>
<b>8</b>	<b>*Sacramento State</b>	<b>W 3-0</b>
13	*at Montana	W 3-2
15	*at Weber State	W 3-0

\*Big Sky Match

**Home matches in bold**

<sup>1</sup>Utah State Tournament

<sup>2</sup>Arizona State Tournament

<sup>3</sup>Colorado Tournament

<sup>4</sup>Utah Valley Tournament

All times local to site/subject to change



# Big Sky Conference Volleyball • November 17, 2014

**MONTANA**  
(6-18, 6-6)

**MONTANA STATE**  
(5-19, 2-10)

**NORTH DAKOTA**  
(21-8, 9-3)

## August

29	Cal Poly <sup>1</sup>	L 1-3
30	Washington State <sup>1</sup>	L 0-3
30	Wyoming <sup>1</sup>	L 0-3

## September

5	vs. Ball State <sup>2</sup>	L 2-3
5	vs. South Alabama <sup>2</sup>	L 2-3
6	at Wyoming <sup>2</sup>	L 0-3
12	vs. St. Francis <sup>3</sup>	L 1-3
12	vs. Seton Hall <sup>3</sup>	L 0-3
13	vs. Kent State <sup>3</sup>	L 2-3
13	at West Virginia <sup>3</sup>	L 2-3
18	Seattle	L 2-3
20	Gonzaga	L 0-3
25	*at Weber State	W 3-2
27	*at Montana State	W 3-2

## October

3	*North Dakota	L 1-3
4	*Northern Colorado	L 1-3
9	*at Northern Arizona	L 0-3
11	*at Southern Utah	W 3-2
16	*at Idaho	L 0-3
17	*at Eastern Wash.	L 0-3
24	*Portland State	W 3-2
25	*Sacramento State	W 3-1
30	*Eastern Washington	W 3-1

## November

1	*Idaho	L 0-3
6	*at Northern Colorado	L 0-3
8	*at North Dakota	L 0-3
13	*Idaho State	L 2-3
15	*Montana State	L 0-3

\*Big Sky Match

Home matches in bold

<sup>1</sup>Montana Invitational  
<sup>2</sup>Wyoming Cowgirl Classic  
<sup>3</sup>Mountaineer Invitational

All times local to site/subject to change

## August

29	at Utah <sup>1</sup>	L 0-3
30	vs. New Mexico State <sup>1</sup>	W 3-1
30	vs. Missouri State <sup>1</sup>	L 0-3

## September

5	vs. Canisius College <sup>2</sup>	W 3-2
6	vs. Grand Canyon <sup>2</sup>	L 2-3
6	at Gonzaga <sup>2</sup>	L 0-3
12	at New Mexico <sup>3</sup>	L 0-3
13	vs. UC Irvine <sup>3</sup>	L 0-3
13	vs. Bethune-Cookman <sup>3</sup>	W 3-1
19	vs. Austin Peay St. <sup>4</sup>	L 1-3
20	vs. Memphis <sup>4</sup>	L 0-3
20	at Tennessee <sup>4</sup>	L 0-3
25	*at Idaho State	L 0-3
27	*Montana	L 2-3

## October

3	*Northern Colorado	L 0-3
4	*North Dakota	L 0-3
9	*at Southern Utah	W 3-0
11	*at Northern Arizona	L 0-3
16	*at Eastern Wash.	L 0-3
17	*at Idaho	L 0-3
24	*Sacramento State	L 0-3
25	*Portland State	L 0-3
30	*Idaho	L 0-3

## November

1	*Eastern Washington	W 3-2
6	*at North Dakota	L 0-3
8	*at Northern Colorado	L 0-3
13	*Weber State	W 3-1
15	*at Montana	W 3-0

\*Big Sky Match

Home matches in bold

<sup>1</sup>University of Utah Tournament  
<sup>2</sup>Gonzaga Invitational  
<sup>3</sup>New Mexico Tournament  
<sup>4</sup>University of Tennessee Tournament

All times local to site/subject to change

## August

29	vs. Auburn <sup>1</sup>	L 1-3
29	vs. Arkansas State <sup>1</sup>	W 3-2
30	at George Wash. <sup>1</sup>	L 0-3

## September

2	at Drake	W 3-0
5	Tulane <sup>2</sup>	W 3-0
5	South Dakota <sup>2</sup>	W 3-2
6	Tulane <sup>2</sup>	W 3-0
6	South Dakota <sup>2</sup>	W 3-2
9	at North Dakota State	L 1-3
11	at South Dakota St.	W 3-0
12	vs. Iowa <sup>3</sup>	L 0-3
13	vs. Eastern Illinois <sup>3</sup>	W 3-0
18	at Mississippi State <sup>4</sup>	W 3-0
19	vs. Mississippi Valley St. <sup>4</sup>	W 3-0
19	vs. Pacific <sup>4</sup>	L 1-3
20	vs. SIU-Edwardsville <sup>4</sup>	W 3-0
25	*Eastern Washington	L 0-3
27	*Idaho	W 3-1

## October

3	*at Montana	W 3-1
4	*at Montana State	W 3-0
10	*at Weber State	W 3-0
11	*at Idaho State	L 0-3
16	*Portland State	W 3-2
18	*at Northern Colorado	L 0-3
23	*Northern Arizona	W 3-0
25	*Southern Utah	L 1-3
30	*at Sacramento State	W 3-1

## November

1	*Northern Colorado	W 3-1
6	*Montana State	W 3-0
8	*Montana	W 3-0
13	*at Idaho	W 3-2
15	*at Eastern Wash.	W 3-2

\*Big Sky Match

Home matches in bold

<sup>1</sup>George Washington Tournament  
<sup>2</sup>UND Tournament  
<sup>3</sup>South Dakota State Tournament  
<sup>4</sup>Mississippi State Tournament  
All times local to site/subject to change



## NORTHERN ARIZONA (17-6, 8-4)

### August

29	at Houston Baptist <sup>1</sup>	W 3-1
30	vs. Chattanooga <sup>1</sup>	W 3-0
30	vs. Tulsa <sup>1</sup>	W 3-1

### September

5	vs. Texas A&M CC <sup>2</sup>	W 3-1
5	vs. Lamar <sup>2</sup>	W 3-1
6	at Texas-Pan Am. <sup>2</sup>	W 3-0
<b>12</b>	<b>Grand Canyon <sup>3</sup></b>	<b>W 3-0</b>
<b>12</b>	<b>UC Riverside <sup>3</sup></b>	<b>W 3-1</b>
<b>13</b>	<b>Albany <sup>3</sup></b>	<b>W 3-0</b>
19	at Hawaii	L 0-3
20	at Hawaii	L 0-3
<b>25</b>	<b>*Portland State</b>	<b>W 3-1</b>
<b>27</b>	<b>*Sacramento State</b>	<b>W 3-0</b>

### October

2	*at Idaho	L 0-3
4	*at Southern Utah	W 3-1
<b>9</b>	<b>*Montana</b>	<b>W 3-0</b>
<b>11</b>	<b>*Montana State</b>	<b>W 3-0</b>
16	*at Weber State	W 3-0
18	*at Idaho State	L 1-3
23	*at North Dakota	W 3-0
25	*at Northern Colorado	L 1-3
<b>30</b>	<b>*Idaho State</b>	<b>L 2-3</b>

### November

<b>1</b>	<b>*Weber State</b>	<b>W 3-0</b>
<b>6</b>	<b>*Eastern Washington</b>	<b>W 3-1</b>
<b>8</b>	<b>*Southern Utah</b>	<b>W 3-0</b>
13	*at Sacramento State	L 1-3
15	*at Portland State	W 3-0

\*Big Sky Match

#### Home matches in bold

<sup>1</sup>Houston Baptist Tournament

<sup>2</sup>Texas-Pan. Am. Tournament

<sup>3</sup>Northern Arizona Tournament

All times local to site/subject to change

## NORTHERN COLORADO (15-9, 8-4)

### August

29	vs. Eastern Illinois <sup>1</sup>	W 3-2
30	vs. Western Illinois <sup>1</sup>	W 3-1
30	at Ball State <sup>1</sup>	L 0-3

### September

<b>3</b>	<b>Colorado State <sup>2</sup></b>	<b>L 0-3</b>
<b>5</b>	<b>Wisconsin <sup>2</sup></b>	<b>L 1-3</b>
<b>6</b>	<b>Florida A&amp;M <sup>2</sup></b>	<b>W 3-0</b>
12	at Long Beach State <sup>3</sup>	L 0-3
13	at Loyola Marymount <sup>3</sup>	L 0-3
13	vs. Texas A&M CC <sup>3</sup>	W 3-2
<b>19</b>	<b>Hampton <sup>4</sup></b>	<b>W 3-1</b>
<b>20</b>	<b>UC Davis <sup>4</sup></b>	<b>W 3-2</b>
<b>20</b>	<b>Wyoming <sup>4</sup></b>	<b>W 3-1</b>
<b>25</b>	<b>*Idaho</b>	<b>L 1-3</b>
<b>27</b>	<b>*Eastern Washington</b>	<b>L 2-3</b>

### October

3	*at Montana State	W 3-0
4	*at Montana	W 3-1
10	*at Idaho State	W 3-2
11	*at Weber State	L 1-3
<b>16</b>	<b>*Sacramento State</b>	<b>W 3-0</b>
<b>18</b>	<b>*North Dakota</b>	<b>W 3-0</b>
<b>23</b>	<b>*Southern Utah</b>	<b>W 3-0</b>
<b>25</b>	<b>*Northern Arizona</b>	<b>L 1-3</b>
30	*at Portland State	W 3-0

### November

1	*at North Dakota	L 1-3
<b>6</b>	<b>*Montana</b>	<b>W 3-0</b>
<b>8</b>	<b>*Montana State</b>	<b>W 3-0</b>
13	*at Eastern Wash.	W 3-1
15	*at Idaho	W 3-1
<b>29</b>	<b>Denver</b>	<b>Noon</b>

\*Big Sky Match

#### Home matches in bold

<sup>1</sup>Ball State Tournament

<sup>2</sup>Northern Colo./Colo. St. Classic

<sup>3</sup>LMU/Long Beach St. Invitational

<sup>4</sup>Hampton Inn & Suites No. Colo. Invite

All times local to site/subject to change

## PORTLAND STATE (7-17, 5-7)

### August

29	vs. Washington <sup>1</sup>	L 0-3
30	at Boise State <sup>1</sup>	L 1-3
30	vs. Gonzaga <sup>1</sup>	L 1-3

### September

5	at Colorado <sup>2</sup>	L 0-3
6	vs. Pittsburgh <sup>2</sup>	L 0-3
6	vs. Georgia So. <sup>2</sup>	W 3-1
11	vs. Cal St. Northridge <sup>3</sup>	L 0-3
12	vs. Lamar <sup>3</sup>	W 3-0
12	at Oklahoma <sup>3</sup>	L 1-3
<b>15</b>	<b>Oregon</b>	<b>L 1-3</b>
18	vs. Loyola-Marymount <sup>4</sup>	L 0-3
19	at Washington State <sup>4</sup>	L 0-3
25	*at Northern Arizona	L 1-3
27	*at Southern Utah	L 1-3

### October

<b>2</b>	<b>*Weber State</b>	<b>W 3-1</b>
<b>4</b>	<b>*Idaho State</b>	<b>L 0-3</b>
<b>9</b>	<b>*Idaho</b>	<b>W 3-2</b>
<b>11</b>	<b>*Eastern Washington</b>	<b>W 3-0</b>
16	*at North Dakota	L 2-3
18	*at Sacramento State	W 3-0
24	*at Montana	L 2-3
25	*at Montana State	W 3-0
<b>30</b>	<b>*Northern Colorado</b>	<b>L 0-3</b>

### November

<b>1</b>	<b>*Sacramento State</b>	<b>L 2-3</b>
6	*at Idaho State	L 1-3
8	*at Weber State	W 3-0
<b>13</b>	<b>*Southern Utah</b>	<b>W 3-0</b>
<b>15</b>	<b>*Northern Arizona</b>	<b>L 0-3</b>

\*Big Sky Match

#### Home matches in bold

<sup>1</sup>Northwest Challenge

<sup>2</sup>Colorado Tournament

<sup>3</sup>Nike Tournament

<sup>4</sup>Washington State Tournament

All times local to site/subject to change



# Big Sky Conference Volleyball • November 17, 2014

## SACRAMENTO STATE (7-20, 2-10)

### August

29 vs. UNC Greensboro<sup>1</sup> L 0-3  
 29 vs. East Tennessee St.<sup>1</sup> W 3-1  
 30 vs. Morgan State<sup>1</sup> L 1-3  
 30 at Charlotte<sup>1</sup> W 3-1

### September

**5 Fresno State<sup>2</sup> 7 p.m.**  
**6 Loyola Marymount<sup>2</sup> 12:30 p.m.**  
**6 UC Santa Barbara<sup>2</sup> 7:30 p.m.**  
 9 at Nevada L 0-3  
 12 vs. San Jose State<sup>3</sup> W 3-2  
 13 vs. CS Bakersfield<sup>3</sup> W 3-1  
 13 at Cal Poly<sup>3</sup> L 0-3  
**16 UC Davis L 2-3**  
 19 vs. George Wash.<sup>4</sup> L 0-3  
 20 at Valparaiso<sup>4</sup> L 0-3  
 20 vs. Murray State<sup>4</sup> W 3-1  
 25 \*at Southern Utah L 2-3  
 27 \*at Northern Arizona L 1-3

### October

**2 \*Idaho State L 1-3**  
**4 \*Weber State L 2-3**  
**9 \*Eastern Washington L 2-3**  
**11 \*Idaho L 0-3**  
 16 \*at Northern Colorado L 0-3  
**18 \*Portland State L 0-3**  
 24 \*at Montana State W 3-0  
 25 \*at Montana L 1-3  
**30 \*North Dakota L 1-3**

### November

1 \*at Portland State W 3-2  
 6 \*at Weber State L 2-3  
 8 \*at Idaho State L 0-3  
**13 \*Northern Arizona W 3-1**  
**15 \*Southern Utah L 2-3**

\*Big Sky Match

**Home matches in bold**

<sup>1</sup>Charlotte Tournament

<sup>2</sup>Sacramento State Invitational

<sup>3</sup>Cal Poly ShareSLO Tournament

<sup>4</sup>Crusader Invitational

All times local to site/subject to change

## SOUTHERN UTAH (13-10, 5-7)

### August

29 vs. The Citadel<sup>1</sup> W 3-0  
 30 at Navy<sup>1</sup> W 3-1  
 30 vs. Providence<sup>1</sup> W 3-0

### September

**5 Savannah State<sup>2</sup> W 3-0**  
**5 UC Riverside<sup>2</sup> W 3-0**  
**6 Maryland-E. Shore<sup>2</sup> W 3-0**  
 12 vs. Indiana State<sup>3</sup> L 1-3  
 12 at SIU-Edwardsville<sup>3</sup> L 1-3  
 13 vs. Arkansas State<sup>3</sup> L 0-3  
 17 at Grand Canyon W 3-1  
 23 at UNLV L 0-3  
**25 \*Sacramento State W 3-2**  
**27 \*Portland State W 3-1**

### October

2 \*at Eastern Wash. W 3-2  
**4 \*Northern Arizona L 1-3**  
**9 \*Montana State L 0-3**  
**11 \*Montana L 2-3**  
 16 \*at Idaho State L 1-3  
 17 \*at Weber State W 3-2  
**21 Utah Valley 6 p.m.**  
 23 \*at Northern Colorado L 0-3  
 25 \*at North Dakota L 1-3  
**30 \*Weber State W 3-0**

### November

**1 \*Idaho State L 1-3**  
**6 \*Idaho L 2-3**  
 8 \*at Northern Arizona L 0-3  
 13 \*at Portland State L 0-3  
 15 \*at Sacramento State W 3-2

\*Big Sky Match

**Home matches in bold**

<sup>1</sup>Kristen Dickmann Invitational

<sup>2</sup>Southern Utah Invitational

<sup>3</sup>SIU Edwardsville Tournament

All times local to site/subject to change

## WEBER STATE (6-20, 2-10)

### August

29 at Maryland-E. Shore<sup>1</sup> W 3-1  
 29 vs. South Dakota St.<sup>1</sup> L 0-3  
 30 vs. Fairleigh Dickinson<sup>1</sup> W 3-1  
 30 vs. UMBC<sup>1</sup> L 2-3

### September

5 vs. Houston Baptist<sup>2</sup> L 2-3  
 6 vs. Marist<sup>2</sup> L 0-3  
 6 at Air Force<sup>2</sup> L 1-3  
 12 vs. Furman<sup>3</sup> L 2-3  
 13 at Wyoming<sup>3</sup> L 0-3  
 13 vs. Gonzaga<sup>3</sup> L 0-3  
 19 vs. Air Force<sup>4</sup> W 3-1  
 19 at Texas Tech<sup>4</sup> L 2-3  
 20 vs. Abilene Christian<sup>4</sup> L 0-3  
**25 \*Montana L 2-3**  
 27 \*at Idaho State L 0-3

### October

2 \*at Portland State L 1-3  
 4 \*at Sacramento State W 3-2  
**10 \*North Dakota L 0-3**  
**11 \*Northern Colorado W 3-1**  
 14 at Utah Valley W 3-1  
**16 \*Northern Arizona L 0-3**  
**17 \*Southern Utah L 2-3**  
 23 \*at Idaho L 0-3  
 25 \*at Eastern Washington L 0-3  
 30 \*at Southern Utah L 0-3

### November

1 \*at Northern Arizona L 0-3  
 3 at Grand Canyon L 2-3  
**6 \*Sacramento State W 3-2**  
**8 \*Portland State L 0-3**  
 13 \*at Montana State L 1-3  
**15 \*Idaho State L 0-3**

\*Big Sky Match

**Home matches in bold**

<sup>1</sup>Maryland-Eastern Shore Tournament

<sup>2</sup>Air Force Invitational

<sup>3</sup>UniWyo Invitational

<sup>4</sup>Lone Star Showdown

All times local to site/subject to change

# BIG SKY CHAMPIONSHIP HISTORY

Eastern Washington d. Boise State 3-2  
15-7, 15-7, 4-15, 9-15, 15-12

**First round**

Idaho State d. Eastern Washington 3-1  
15-10, 10-15, 15-9, 15-9

Montana d. Boise State 3-0  
15-9, 15-3, 15-12

**MVP:** Marie Stielow, ISU

**1985\* • PORTLAND, OREGON**

**Championship**

Portland State d. Montana 3-1  
15-6, 15-4, 12-15, 15-8

**Consolation**

Idaho State d. Idaho 3-2  
7-15, 15-10, 15-10, 14-16, 15-13

**First round**

Montana d. Idaho State 3-0  
15-4, 15-8, 15-7

Portland State d. Idaho 3-0  
15-2, 10-15, 15-9, 15-7

**MVP:** Lynda Johnson, PSU

**1984\* • PORTLAND, OREGON**

**Championship**

Portland State d. Idaho 3-0  
15-9, 19-17, 15-8

**Consolation**

Montana State d. Montana 3-0  
15-10, 15-5, 15-2

**First round**

Idaho d. Montana State 3-0  
15-9, 15-10, 15-4

Portland State d. Montana 3-0  
15-8, 15-7, 15-10

**1983\* • PORTLAND, OREGON**

**Championship**

Portland State d. Montana State 3-1  
17-15, 12-15, 15-10, 15-8

**Consolation**

Montana d. Boise State 3-0  
15-10, 15-7, 17-15

**First round**

Montana State d. Montana 3-2  
**14-16, 15-9, 4-15, 15-13, 15-9**

Portland State d. Boise State 3-0  
**15-7, 15-6, 15-8**

**1982\* • PORTLAND, OREGON**

**Championship**

Portland State d. Montana 3-0  
15-12, 15-1, 15-2

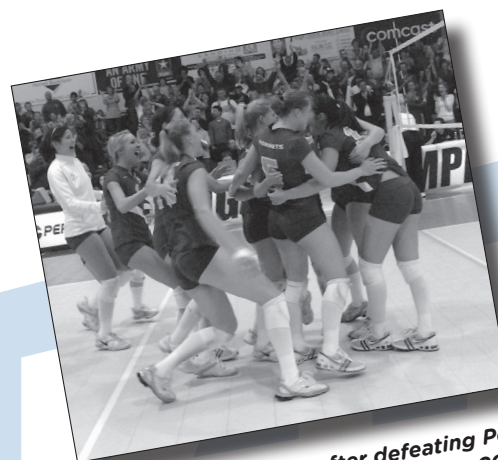
**Consolation**

Boise State d. Weber State 3-1  
10-15, 15-2, 15-12, 15-2

**First round**

Portland State d. Boise State 3-0  
15-13, 15-5, 15-6

Montana d. Weber State 3-1  
15-6, 8-15, 15-12, 15-7



*Sacramento State celebrates after defeating Portland State 3-0 in the championship match at the 2007 Big Sky Tournament. It was the Hornets' 11th straight Big Sky title.*



*Montana's Taryn Wright had a conference-record 13 service aces in a five-game match at the 2006 Big Sky Championship.*

# CHAMPIONSHIP SINGLE MATCH RECORDS



*Northern Arizona's Kim Babcock notched 35 kills in the quarterfinals of the 2007 Big Sky Championship to tie the tournament single match record that Nancy Ma of CSU Northridge set nine years earlier.*

### MOST KILLS

#### All Games

- 35 (5) Kim Babcock, NAU at Eastern Washington - Nov. 23, 2007
- 35 (5) Nancy Ma, CSN vs Northern Arizona - Nov. 27, 1998
- 30 (5) Brandy Anderson, MSU vs Weber State - Nov. 27, 1998
- 29 (3) Missie Stidham, SAC at Portland State - Nov. 24, 2007
- 29 (4) Angie Bellinger, UM vs Boise State - Nov. 24, 1991
- 29 (5) Mindy Rice, UI vs Montana - Nov. 19, 1994

#### 3 Game Match

- 29 (3) Missie Stidham, SAC at Portland State - Nov. 24, 2007
- 23 (3) Tami Burchard, NAU vs CS Northridge - Nov. 22, 1996
- 23 (3) Nancy Ma, CSN vs Northern Arizona - Nov. 22, 1996

### MOST ATTACKS

#### All Games

- 119 (5) Mindy Rice, UI vs Montana - Nov. 19, 1994
- 99 (5) Jill Haas, SAC vs Cal State Northridge - Nov. 23, 1996
- 79 (5) Nancy Ma, CSN vs Sacramento State - Nov. 23, 1996

#### 4 Game Match

- 73 (4) Richelle Wilson, PSU vs Montana State - Nov. 21, 2002

#### 3 Game Match

- 72 (3) Carissa Buie, SAC vs Northern Arizona - Nov. 29, 1997

### HIGHEST ATTACK PERCENTAGE (3 att/gm)

#### All Games

- .818 (10-11) Susan Brondell, NAU vs Montana - Nov. 28, 1997
- .733 (11-0-15) Inga Swanson, UM vs Idaho - Nov. 27, 1993
- .733 (11-0-15) Sara Todorovich, EWU vs. UNC - Nov. 27, 2009
- .686 (25-1-35) Robyn Felder, EWU vs Idaho State - Nov. 15, 2001

### ASSISTS

#### All Games

- 82 (5) Melissa Haugen, NAU vs Cal St. Northridge - Nov. 27, 1998
- 77 (5) Lynne Hyland, UI vs Montana - Nov. 19, 1994
- 74 (5) Tina Kaay, EWU vs Idaho State - Nov. 16, 1990

#### 4 Game Match

- 73 (4) Whitney Donahue, NAU vs Montana - Nov. 18, 1999

### 3 Game Match

- 61 (3) Melissa Haugen, NAU vs Sacramento State - Nov. 29, 1997

### DIGS

#### All Games

- 44 (5) Amy Gillis, CSN vs Sacramento State - Nov. 23, 1996
- 40 (5) Leah Smith, UI vs Montana - Nov. 19, 1994
- 38 (5) Heather Hofmans, CSN vs Sacramento State - Nov. 23, 1996

#### 4 Game Match

- 32 (4) Kathy Young, UM vs Boise State - Nov. 24, 1991
- 32 (4) Lauren Clark, UND vs. Idaho State - Nov. 29, 2013

### 3 Game Match

- 33 (3) Mary Lines, NAU vs Sacramento State - Nov. 29, 1997

### SERVICE ACES

#### All Games

- 13 (5) Taryn Wright, UM vs. Northern Colorado - Nov. 18, 2006
- 6 (4) Emily Wilson, SAC vs Eastern Washington - Nov. 23, 2002
- 5 (5) Sarah Parsons, UM vs Montana State - Nov. 21, 1996
- 5 (5) Jessica Puckett, UI vs Boise State - Nov. 26, 1993
- 5 (5) Jennifer Moran, UM vs Idaho State - Nov. 17, 1990

#### 4 Game Match

- 6 (4) Emily Wilson, SAC vs Eastern Washington - Nov. 23, 2002

### BLOCK SOLOS

#### All Games

- 4 (5) Karin Lundqvist, MSU at Sacramento State - Nov. 16, 2000
- 4 (5) Laura Black, WSU vs Montana State - Nov. 27, 1998
- 4 (4) Lisa Wylie, NAU vs Montana - Nov. 27, 1992
- 4 (4) Colleen Jantz, UM vs Boise State - Nov. 24, 1991
- 4 (4) Tricia Lake, UM vs Boise State - Nov. 24, 1991
- 4 (3) Colleen Jantz, UM vs Idaho State - Nov. 23, 1991
- 4 (4) Kelly Baker, BSU vs Idaho State - Nov. 18, 1988

### BLOCK ASSISTS

#### All Games

- 11 (4) Louisa Kawulok, UI vs Boise State - Nov. 17, 1995
- 10 (5) Michelle Segun, PSU vs Weber State - Nov. 23, 2007
- 10 (5) Dominique Fradella, PSU vs Weber state - Nov. 23, 2007

### TOTAL BLOCKS

#### All Games

- 11 (5) Karin Lundqvist, MSU at Sacramento State - Nov. 16, 2000
- 11 (5) Laura Black, WSU vs Cal State Northridge - Nov. 27, 1998
- 11 (5) Rebekah Cotter, SAC vs CS Northridge - Nov. 23, 1996
- 11 (4) Louisa Kawulok, UI vs Boise State - Nov. 17, 1995
- 11 (4) Kathy Goods, ISU vs Northern Arizona - Nov. 17, 1995

# CHAMPIONSHIP SINGLE MATCH RECORDS

## MOST KILLS

### All Games

1. 98 (5) Eastern Washington vs Idaho State - Nov. 16, 1990
2. 98 (5) Idaho State vs Eastern Washington - Nov. 16, 1990
3. 97 (5) Northern Arizona vs Cal State Northridge - Nov. 27, 1998

### 4 Game Match

1. 83 (4) Eastern Washington at Sacramento State - Nov. 17, 2001

### 3 Game Match

1. 72 (3) Cal State Northridge vs Montana State - Nov. 18, 1999

## MOST ATTACKS

### All Games

1. 304 (5) Sacramento State vs Cal State Northridge - Nov. 23, 1996
2. 300 (5) Cal State Northridge vs Sacramento State - Nov. 23, 1996
3. 285 (5) Eastern Washington vs Idaho State - Nov. 16, 1990

## HIGHEST ATTACK PERCENTAGE

### All Games

1. .425 (3) Boise State vs Northern Arizona - Nov. 23, 1991
2. .394 (3) Sacramento State vs Eastern Washington - Nov. 23, 2007
3. .382 (3) Northern Colorado vs. North Dakota - Nov. 23, 2012
4. .368 (3) Northern Arizona vs Montana - Nov. 28, 1997
5. .356 (3) Eastern Washington vs Portland State - Nov. 19, 2004

## ASSISTS

### All Games

1. 91 (5) Cal State Northridge vs Sacramento State - Nov. 23, 1996
2. 87 (5) Idaho State vs Eastern Washington - Nov. 16, 1990
3. 84 (5) Northern Arizona vs Cal State Northridge - Nov. 27, 1998

### 4 Game Match

1. 78 (4) Eastern Washington at Sacramento State - Nov. 17, 2001

### 3 Game Match

1. 69 (3) Cal State Northridge vs Montana State - Nov. 18, 1999

## DIGS

### All Games

1. 163(5) Cal State Northridge vs Sacramento State - Nov. 23, 1996
2. 140 (5) Sacramento State vs Cal State Northridge - Nov. 23, 1996
3. 135 (5) Idaho State vs Eastern Washington - Nov. 16, 1990

### 4 Game Match

1. 105 Montana State vs Cal State Northridge - Nov. 16, 2000

## 3 Game Match

1. 111 Northern Arizona vs Sacramento State - Nov. 29, 1997

## SERVICE ACES

### All Games

1. 14 (5) Eastern Washington vs Northern Arizona - Nov. 16, 2001
2. 13 (5) Montana vs. Northern Colorado - Nov. 16, 2006
3. 12 (5) Eastern Washington vs Northern Arizona - Nov. 17, 2000
4. 12 (4) Sacramento State vs E. Washington - Nov. 23, 2002

## BLOCK SOLOS

### All Games

1. 14 (4) Montana vs Boise State - Nov. 24, 1991
2. 10 (3) Montana vs Idaho State - Nov. 23, 1991
3. 8 (5) Northern Arizona vs. Montana - Nov. 29, 2013
4. 7 (4) Montana vs Northern Arizona - Nov. 27, 1992
5. 7 (4) Boise State vs Idaho State - Nov. 18, 1988

## BLOCK ASSISTS

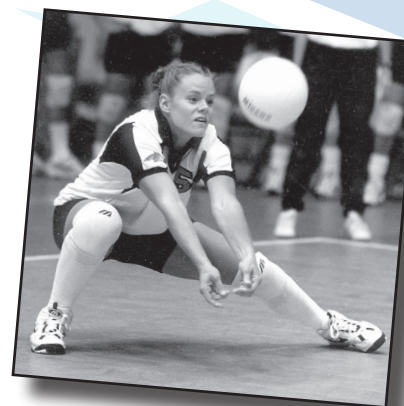
### All Games

1. 34 (5) Portland State vs Weber State - Nov. 23, 2007
2. 33 (5) Weber State vs Portland State - Nov. 23, 2007
3. 30 (5) E. Washington vs. N. Colorado - Nov. 27, 2009
- 30 (4) Portland State vs. Sacramento State - Nov. 25, 2011
5. 28 (5) Montana vs Idaho - Nov. 19, 1994
- 28 (4) Montana vs. Portland State - Nov. 27, 2009

## TOTAL BLOCKS

### All Games

1. 18.5 (4) Montana vs Northern Arizona - Nov. 27, 1992
2. 18.0 (5) Montana State at Sacramento State - Nov. 17, 2000
3. 18.0 (4) Eastern Washington vs Boise State - Nov. 18, 1989
4. 17.0 Six Teams Tied



*Montana State's Stephanie Laya helped the Bobcats to a four-game match record of 105 digs in 2000 against Cal State Northridge. Laya finished her career as MSU's all-time leader in digs with 1,183.*

## CHAMPIONSHIP RECORDS (2+ MATCHES)

### MOST KILLS

- 70 Maggie Barrera, Northern Arizona - 1999
- 65 Alexis Cormier, Cal State Northridge - 1999
- 57 Robyn Felder, Eastern Washington - 2001
- 54 Janelle Ruen, Eastern Washington - 2001
- 53 Laura Szymanski, Cal State Northridge - 1999

### KILL AVERAGE

- 8.33 Missie Stidham, Sacramento State - 2007
- 7.00 Kim Babcock, Northern Arizona - 2007
- 6.33 Shannon Beatty, Sacramento State - 1997
- 6.14 Tami Burchard, Northern Arizona - 1996
- 6.00 Nancy Ma, Cal State Northridge - 1996
- 6.00 Tzvetelina Yanchulova, Idaho - 1994

### ATTACKS

- 166 Mindy Rice, Idaho - 1994
- 157 Alexis Cormier, Cal State Northridge - 1999
- 154 Maggie Barrera, Northern Arizona - 1999
- 151 Jill Haas, Sacramento State - 1996
- 131 Janelle Ruen, Eastern Washington - 2001
- 131 Jennifer Moran, Montana - 1990

### HITTING PERCENTAGE (3 att/gm)

- .525 (25-4-40) Jessica Moore, Idaho - 1995
- .500 (21-4-34) Rebekah Capel, Sacramento State - 1998
- .486 (18-1-35) Shannon Arts, Sacramento State - 2005
- .485 (34-2-66) Lori Heeter, Idaho State - 1990
- .477 (24-3-44) Lisa Beauchene, Sacramento State - 2002

### MOST ASSISTS

- 194 Whitney Donahue, Northern Arizona - 1999
- 156 Melissa Haugen, Northern Arizona - 1997
- 147 Christina Albers, Eastern Washington - 2005
- 134 Susie Ketchum, Idaho State - 1990
- 131 Maureen Rafferty, Sacramento State - 1996
- 131 Lynne Hyland, Idaho - 1994

### ASSIST AVERAGE

- 18.50 Maureen Rafferty, Sacramento State - 1997
- 18.00 Lorraine Morrison, Montana State - 2001
- 16.38 Lynne Hyland, Idaho - 1994
- 16.29 Melissa Haugen, Northern Arizona - 1996
- 16.17 Rose Burke, Sacramento State - 2007

### MOST DIGS

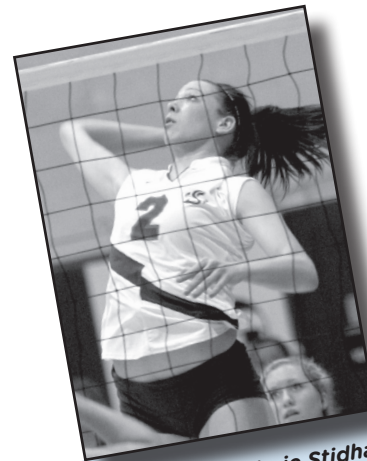
- 77 Andrea Verdoljak, Eastern Washington - 2005
- 75 Hedder Ilustre, Cal State Northridge - 1999
- 65 Mandy Daniels, Eastern Washington - 2007
- 64 Kylee Sessions, Idaho State - 2013

### DIG AVERAGE

- 8.57 Kristin Lutes, Sacramento State - 2005
- 8.14 Nicole Bateham, Portland State - 2011
- 7.50 Amy Gillis, Cal State Northridge - 1996
- 6.83 Carissa Buie, Sacramento State - 1997
- 6.83 Angela Lewis, Sacramento State - 1997
- 6.71 Kathy Young, Montana - 1991

### SERVICE ACES

- 13 Taryn Wright, Montana - 2006
- 7 Emily Wilson, Sacramento State - 2002
- 7 Janelle Ruen, Eastern Washington - 2001
- 7 Sarah Parsons, Montana - 1996
- 6 Janelle Ruen, Eastern Washington - 2000
- 6 Jessica Puckett, Idaho - 1993
- 6 Ann Schwenke, Montana - 1990
- 6 Jennifer Moran, Montana - 1990
- 6 Robyn Mecham, Idaho State - 1990



*Sacramento State's Missie Stidham posted a record 8.33 kills per game average at the 2007 Big Sky Championship.*

### ACE AVERAGE

- 1.00 Jessica Puckett, Idaho - 1993
- 0.78 Emily Wilson, Sacramento State - 2002
- 0.71 Deanna Albers, Eastern Washington - 2004
- 0.71 Kelly Baker, Boise State - 1988
- 0.70 Sarah Parsons, Montana - 1996

### BLOCK SOLOS

- 8 Colleen Jantz, Montana - 1991
- 6 Tricia Lake, Montana - 1991
- 5 Kelly Baker, Boise State - 1988
- 4 Nine players tied
- 4 Tracy Vargas, Portland State - 2008 (most recent)

### BLOCK ASSISTS

- 16 Rebekah Cotter, Sacramento State - 1996
- 15 Kolbie Murphey, Weber State - 2007
- 15 Michelle Segun, Portland State - 2007
- 15 Karen Goff-Downs, Montana - 1994
- 14 Brittney Bisailon, Weber State - 2007
- 14 Maggie Barrera, Northern Arizona - 1999
- 14 Louisa Kawulok, Idaho - 1995
- 14 Ashley Jensen, Eastern Washington - 2005

### TOTAL BLOCKS

- 18 Rebekah Cotter, Sacramento State - 1996
- 16 Kolbie Murphey, Weber State - 2007
- 16 Maggie Baarrera, Northern Arizona - 1999
- 16 Getty Dimitrova, Cal State Northridge - 1996
- 16 Louisa Kawulok, Idaho - 1995
- 16 Karen Goff-Downs, Montana - 1994
- 16 Debbie Masak, Idaho State - 1990

### BLOCK AVERAGE

- 2.50 Dana Bennish, Montana - 1994
- 2.29 Louisa Kawulok, Idaho - 1995
- 2.17 Michelle Franz, Sacramento State - 2007
- 2.00 Cori Carper, Montana State - 1997
- 2.00 Getty Dimitrova, Cal State Northridge - 1996



# CHAMPIONSHIP RECORDS (2+ MATCHES)

## MOST KILLS

1.	239	Eastern Washington - 2001
2.	232	Cal State Northridge - 1999
3.	222	Northern Arizona - 1999
4.	209	Eastern Washington - 2005
5.	188	Northern Arizona - 1997
6.	187	Eastern Washington - 2006
7.	185	Idaho State - 1990
8.	174	Eastern Washington - 2000
9.	165	Idaho State - 2013
10.	162	Cal State Northridge - 1996

## KILL AVERAGE

1.	23.17	Sacramento State - 1997
2.	20.25	Cal State Northridge - 1996
3.	19.57	Eastern Washington - 2001
4.	18.83	Sacramento State - 2007
5.	18.80	Northern Arizona - 1997

## FEWEST KILLS

1.	67	Northern Arizona - 2007
2.	70	Montana - 1993
3.	76	Idaho State - 2003
4.	86	Idaho - 1993
5.	87	Montana State - 2004

## ATTACKS

1.	628	Northern Arizona
2.	625	Cal State Northridge
3.	535	Eastern Washington - 2005
4.	526	Cal State Sacramento - 1996
5.	519	Northern Arizona - 1997

## HITTING PERCENTAGE

1.	.329	(239-53-566)	Eastern Washington - 2001
2.	.302	(111-31-265)	Sacramento State - 1998
3.	.292	(124-42-281)	Idaho - 1995
	.292	(139-42-332)	Northern Colorado - 2012
5.	.288	(185-59-438)	Idaho State - 1990

## LOWEST HITTING PERCENTAGE

1.	.135	(98-55-319)	Montana State - 1998
2.	.137	(101-61-291)	Eastern Washington - 2008
2.	.145	(138-76-428)	Montana - 1996
3.	.152	(76-40-237)	Idaho State - 2003
4.	.155	(121-59-400)	Portland State - 2007
5.	.156	(153-71-526)	Sacramento State - 1996

## MOST ASSISTS

1.	210	Cal State Northridge - 1999
2.	209	Eastern Washington - 2001
3.	205	Northern Arizona - 1999
4.	186	Eastern Washington - 2005
5.	173	Northern Arizona - 1997

## ASSIST AVERAGE

1.	19.33	Sacramento State - 1997
2.	18.88	Cal State Northridge - 1996
3.	18.57	Eastern Washington - 2001
4.	18.00	Sacramento State - 2007

5.	17.86	Northern Arizona - 1996
----	-------	-------------------------

## MOST DIGS

1.	298	Cal State Northridge - 1999
2.	289	Northern Arizona - 1999
3.	256	Eastern Washington - 2001
4.	250	Northern Arizona - 1997
5.	244	Cal State Northridge - 1996

## DIG AVERAGE

1.	31.67	Sacramento State - 1997
2.	30.50	Cal State Northridge - 1996
3.	25.00	Northern Arizona - 1997
4.	23.80	Sacramento State - 1996
5.	23.75	Idaho - 1994

## SERVICE ACES

1.	25	Eastern Washington - 2001
	25	Eastern Washington - 2000
3.	24	Eastern Washington - 2005
4.	22	Montana - 1990
5.	19	Sacramento State - 2002
	19	Northern Arizona - 1999

## ACE AVERAGE

1.	2.43	Boise State - 1991
2.	2.33	Idaho - 1993
	2.33	Weber State - 1988
4.	2.29	Boise State - 1988
5.	2.27	Eastern Washington - 2000

## BLOCK SOLOS

1.	24	Montana - 1991
2.	11	Eastern Washington - 1989
	11	Boise State - 1988
4.	9	Eastern Washington - 2003
	9	Northern Arizona - 1999
	9	Montana - 1992

## BLOCK ASSISTS

1.	60	Weber State - 2007
2.	52	Eastern Washington - 2005
3.	50	Boise State - 1989
4.	48	Sacramento State - 1996
5.	46	Eastern Washington - 2006
	46	Montana State - 2002
	46	Montana State - 2000
	46	Cal State Northridge - 1999
	46	Northern Arizona - 1999
	46	Idaho State - 1990

## TOTAL BLOCKS

1.	32.0	Weber State - 2007
	32.0	Northern Arizona - 1999
	32.0	Eastern Washington - 2005
4.	31.0	Montana State - 2000
5.	30.0	Idaho State - 1990

## BLOCK AVERAGE

1.	4.14	Montana - 1991
	4.14	Boise State - 1989
3.	4.08	Montana State - 1997
4.	4.00	Weber State - 2007
5.	3.79	Montana - 1992



# BIG SKY POSTSEASON HISTORY

## NCAA TOURNAMENT RESULTS

2013 - First Round  
Hawaii def. Idaho State, 3-1 (25-16, 19-25, 25-12, 25-13)

2012 - First Round  
Oregon def. Northern Colorado (25-14, 25-19, 25-18)

2011 - First Round  
Hawaii def. Northern Colorado (25-21, 25-15, 25-15)

2010 - First Round  
Hawaii def. Portland State (25-23, 25-19, 25-8)

2009 - First Round  
Washington d. Northern Colorado (27-25, 15-25, 22-25, 21-25)

2008 - First Round  
Washington d. Portland State (25-11, 25-15, 25-14)

2007-Second Round  
Stanford d. Sacramento State (30-23, 30-11, 30-28)

2007-First Round  
Sacramento State d. Minnesota (23-30, 30-25, 30-24, 30-17)

2006-First Round  
Stanford d. Sacramento State (30-18, 30-18, 30-26)

2005-First Round  
Santa Clara d. Sacramento State (23-30, 30-23, 30-20, 30-23)

2004 - First Round  
Saint Mary's d. Sacramento State (30-26, 27-30, 30-22, 30-17)

2003 - First Round  
Stanford d. Sacramento State (39-37, 30-28, 30-23)

2002- First Round  
Stanford d. Sacramento State (30-22, 30-8, 20-17) @ Palo Alto, CA

2001- First Round  
Eastern Washington d. Oregon State (33-31, 19-30, 30-28, 23-30, 15-10) @ Pullman, WA

2001- Second Round  
Hawaii d. Eastern Washington (30-22, 28-30, 30-20, 30-28) @ Pullman, WA

2000- First Round  
Santa Clara d. Sacramento State (15-12, 15-10, 15-1) @ Santa Clara, CA

1999- First Round  
Minnesota d. Sacramento State (15-9, 15-10, 15-10) @ Los Angeles, CA  
UCLA d. Eastern Washington (15-5, 15-5, 17-15) @ Los Angeles, CA  
North Carolina d. Northern Arizona (15-6, 15-8, 15-10) @ College Station, TX

1998 - First Round

Notre Dame d. Eastern Washington (15-2, 13-15, 15-11, 15-11) @ Palo Alto, CA  
Sacramento State d. Houston (15-9, 15-10, 15-10) @ Stockton, CA  
Second Round  
Pacific d. Sacramento State (15-4, 15-5, 15-3) @ Stockton, CA

1997 - First Round  
Pacific d. Sacramento State (15-11, 7-15, 17-19, 15-11) @ Seattle, WA

1996 - First Round  
Kansas State d. Cal State Northridge (15-12, 14-16, 15-11, 15-13) @ Manhattan, KS

1995 - First Round  
Iowa State d. Idaho (15-13, 15-5, 15-10) @ Ames, IA

1994 - First Round  
Idaho d. Central Florida (15-2, 15-5, 15-5) @ Moscow, ID  
Montana d. Arkansas State (14-16, 15-10, 15-9, 17-15) @ Missoula, MT

1994 - Second Round  
Hawaii d. Idaho (17-15, 15-11, 15-7) @ Honolulu, HI  
Long Beach State d. Montana (15-10, 15-6, 15-8) @ Long Beach, CA

1993 - First Round  
Idaho d. Appalachian State (15-5, 15-8, 15-2) @ Moscow, ID  
1993 - Second Round  
Ohio State d. Idaho (7-15, 15-6, 16-14, 15-2) @ Columbus, OH

1992 - First Round  
UC Santa Barbara d. Idaho (15-3, 15-8, 15-13) @ Santa Barbara, CA

1991 - First Round  
Pacific d. Montana (15-2, 15-6, 15-3) @ Stockton, CA

1990 - First Round  
UC Santa Barbara d. Idaho State (15-12, 15-4, 15-10) @ Santa Barbara, CA  
Pacific d. Montana (15-3, 15-10, 15-9) @ Stockton, CA

1989 - First Round  
Hawaii d. Eastern Washington (15-2, 15-9, 15-7) @ Honolulu, HI

1988 - First Round  
Nebraska d. Weber State (15-10, 15-5, 14-16, 8-15, 15-8) @ Lincoln, NE

1987\* - First Round  
San Jose d. Idaho State (15-9, 15-10, 15-10) @ San Jose, CA

1986\* - First Round  
Pacific d. Idaho State (15-7, 15-9, 15-4) @ Stockton, CA

\*Indicates Mountain West Conference

## NIVC Tournament Results

### 1994 at Kansas City, MO

Massachusetts d. Idaho State (15-8, 18-16, 15-3)  
Iowa State d. Idaho St. (15-11, 4-15, 12-15, 15-10, 15-13)  
Fresno State d. Idaho State (15-5, 13-15, 15-6, 15-8)  
Arkansas d. Idaho State (12-15, 15-13, 15-12, 15-13)

### 1992 at Kansas City, MO

Montana d. Cornell (15-2, 15-10, 15-8)  
Montana d. Iowa State (15-5, 16-14, 12-15, 12-15, 15-13)  
Alabama-Birmingham d. Montana (15-4, 15-4, 15-7)  
Washington State d. Montana (15-10, 15-12, 15-10)

### 1991 at Dayton, OH

Kansas d. No. Arizona (9-15, 15-11, 6-15, 15-4, 15-13)  
Northern Arizona d. Hofstra (15-3, 15-9, 11-15, 15-1)  
Northern Arizona d. UNC-Asheville (15-7, 15-3, 15-6)  
Miami (OH) d. No. Arizona (15-7, 15-13, 9-15, 15-10)

### 1990 at Knoxville, TN

Georgia d. Boise State (6-15, 15-6, 15-11, 15-6)  
Boise State d. No. Iowa (10-15, 7-15, 16-14, 15-10, 15-12)  
Boise State d. Akron (15-4, 15-11, 15-12)  
Boise State d. Arkansas State (16-14, 15-8, 16-14)

### 1989 at Birmingham, AL

Boise St. d. Arkansas St. (15-17, 15-5, 8-15, 15-10, 15-7)  
Boise State d. Georgia (15-8, 9-15, 11-15, 16-14, 15-12)  
Boise State d. Murray State (15-4, 10-15, 15-3, 15-5)  
Boise St. d. Will. Mary (10-15, 15-12, 10-15, 15-9, 15-10)  
Wisconsin d. Boise State (16-14, 11-15, 15-12, 15-9)

## BIG SKY NCAA TOTALS

Team	App.	W	L	Pct	Last
Idaho*	4	2	4	.333	1995
Montana	3	1	3	.250	1994
Eastern Washington	4	1	4	.200	2001
Sacramento State	10	2	10	.167	2007
Portland State	2	0	2	.000	2010
Northern Arizona	1	0	1	.000	1999
Northern Colorado	3	0	3	.000	2012
Cal State Northridge*	1	0	1	.000	1996
Idaho State	2	0	2	.000	2013
Weber State	1	0	1	.000	1988
<b>Totals</b>	<b>30</b>	<b>6</b>	<b>30</b>	<b>.167</b>	<b>-----</b>

\*Indicates no longer member of Big Sky Conference