



November 19, 2013

2013 Big Sky Soccer Standings

	CONFERENCE						OVERALL				
	W	L	T	Pts	GF	GA	W	L	T	GF	GA
Portland State*^	8	0	1	25	14	3	12	4	3	31	15
Northern Arizona*	7	2	0	21	17	8	11	5	3	28	20
Weber State*\$	5	2	2	17	17	9	10	5	5	30	22
Northern Colorado*	5	2	2	17	14	8	9	6	5	25	23
Idaho State	4	3	2	14	10	8	7	8	2	21	28
Sacramento State	3	5	1	10	11	11	7	9	2	22	24
Montana	3	5	1	10	9	14	7	8	4	25	25
Southern Utah	3	5	1	10	12	17	6	11	1	26	45
Eastern Washington	1	8	0	3	4	18	3	15	0	12	33
North Dakota	1	8	0	3	6	18	2	16	1	15	52

* Clinched Post Season Berth
 ^ Regular Season Champion
 \$ Tournament Champion

RECENT SCORES....

NCAA Women's College Cup Friday, November 15

^@BYU 4, Weber State 0

*NCAA Women's College Cup match



Big Sky Championship Semifinals Hillsboro, Ore.

Thursday, November 7

No. 3 Weber State 3, vs. No. 2 Northern Arizona 0
 @No. 1 Portland State 2, No. 4 Northern Colorado 0

Big Sky Championship

Saturday, November 9

No. 3 Weber State 0, @No. 1 Portland State 0
 WSU advances 3-0 on pk's



Presenting Sponsors





2013 BIG SKY SOCCER CHAMPIONSHIP RECAP

HILLSBORO, Ore. - For the first time since 2005, Weber State University's women's soccer team has won the Big Sky Championship.

No. 3 seed Weber State and No. 1 seed Portland State finished regulation and overtime tied 0-0. Weber State advanced 3-0 on penalty kicks on Saturday.

The entire match between WSU and PSU was a defensive battle. Each team had its chances to score. Portland State put six shots on goal to Weber State's four shots on goal.

In the shootout, each team took three shots before Weber State advanced 3-0 on penalty kicks.

WSU's Ryann Waldman, the MVP of the Championship, made two saves in the shootout. Waldman blocked PSU's Abbey Bergquist and Cori Bianchini. Portland State's Tamia Hasan also missed her shot. Ryann Waldman made the game-winning save on the third kicker.

Weber State's Stacy Bair, Chansi Crompton and Bailey Eames each made their shots.

This is Weber State's fourth championship, but first since 2005. This is the third time WSU's head coach Tim Crompton has led his team to be Big Sky Champions. The Wildcats were selected fourth in the preseason poll.

**2013 Big Sky All-Tournament Team
MVP - Ryann Waldman, Weber State**

- Mackenzie Harrison, Weber State
- Chansi Crompton, Weber State
- Mackenzie Day, Weber State
- Brecken Holbrook, Weber State
- Stacy Bair, Weber State
- Emma Cooney, Portland State
- Eryn Brown, Portland State
- Caitlin Plese, Portland State
- Tamia Hasan, Portland State
- Kayla Henningsen, Portland State
- Cierra Gamble, Northern Arizona
- Tara Rickenbach, Northern Colorado

**2013 BIG SKY CONFERENCE SOCCER CHAMPIONSHIP
HOSTED BY PORTLAND STATE UNIVERSITY
NOVEMBER 7 & 9, 2013**



MEDIA INFORMATION

BIG SKY CONFERENCE SOCCER CONTACT

Alyssa Askew
801.392.1978 x-12
aaskew@bigskyconference.org

BIG SKY CONFERENCE WEEKLY RELEASES

The Big Sky Conference media relations department produces a weekly soccer release every Tuesday during the season. Media can receive the releases as a PDF document via email by contacting Alyssa Askew at 801.392.1978 ext.12 or email at aaskew@bigskyconference.org. Standings, statistics and notes are also available on the Big Sky web site at www.bigsky-conf.com.

INTERNET

The official website of the Big Sky Conference can be accessed by visiting www.bigskyconf.com. Weekly game notes, news releases and standings are updated on the website.

BIG SKY SOCCER SID Information

Eastern Washington

Contact: Kyle Bruce
Phone: 509.359.6333
E-Mail: kbruce2@ewu.edu

Idaho State:

Contact: Jerek Wolcott
Phone: 208.282.3651
E-Mail: wolcjere@isu.edu

Montana:

Contact: Joel Carlson
Phone: 406.243.5414
E-Mail: joel.carlson@mso.umt.edu

North Dakota:

Contact: Ross LaDue
Phone: 701.777.6743
E-Mail: rladue@gmail.com

Northern Arizona:

Contact: Steven Gonzalez
Phone: 928.523.1017
E-Mail: srg57@nau.edu

Northern Colorado:

Contact: Collin Boyles
Phone: 720.351.3645
Email: collin.boyles@unco.edu

Portland State:

Contact: Andy Jobanek
Phone: 503.725.2525
E-Mail: ajobanek@pdx.edu

Sacramento State:

Contact: Andrew Tomski
Phone: 916.278.6896
E-Mail: tomsky@csus.edu

Southern Utah:

Contact: Kyle Newhouse
Phone: 435.586.7758
E-Mail: kylenewhouse@suu.edu

Weber State:

Contact: Justin Johnson
Phone: 801.626.7414
E-Mail: justinjohnson@weber.edu

SCHOTT NAMED COACH OF THE YEAR

OGDEN, Utah (Nov. 13, 2013) - Portland State's Laura Schott was named the 2013 Big Sky Soccer of the Year in a vote by the league's 10 head coaches. This is Schott's second coach of the year award.

Schott, in her sixth season as head coach, led Portland State to its first unbeaten Big Sky Conference regular season in school history.

The Vikings were the No. 1 seed and hosted the Big Sky Soccer Championship for the first time since 2009. The Vikings won the regular-season title after going 8-0-1 in the Big Sky Conference. Portland State ended the 2013 season with a 12-4-3 overall record.

Schott has compiled a 53-46-17 record in her six-year head-coaching career. In the Big Sky, Schott's record is 31-7-8, giving her a .760 winning percentage in conference matches.

Schott has led Portland State to at least a share of the Big Sky regular-season title in four of her last six seasons at the helm. The 2013 season was the sixth-straight season that Portland State has made the Big Sky Championship.

Schott is assisted at Portland State by Melanie Langley, Kibwe Cuffie and Matt Dacey.

PAST PLAYERS OF THE WEEK

Offense

- Aug. 27 - Amanda Ellsworth, ISU
- Sept. 3 - Eryn Brown, PSU
- Sept. 10 - Mackenzie Akins, UM
- Sept. 17 - Zoe Foster, UND
- Sept. 24 - Alyssa Anderson, SAC
- Oct. 1 - Mackenzie Harrison, WSU
- Oct. 8 - Lynsey Gaines, PSU
- Oct. 15 - Danielle Birdsall, NC
Gabriela Trenton, SAC
- Oct. 22 - Ariana Cooley, PSU
- Oct. 29 - Juliana Grover, NC
Mackenzie Harrison, WSU
- Nov. 5 - Chloe Torres, UM

Defense

- Aug. 27 - Allyson Stainbrook, ISU
- Sept. 3 - Lauren Weaver, NAU
- Sept. 10 - Alana D'Onofrio, NAU
- Sept. 17 - Caitlin Plese, PSU
- Sept. 24 - Natalie D'Adamio, NC
- Oct. 1 - Kimberly Mata, SAC
Torrie Morris, PSU
- Oct. 8 - Kayla Henningsen, PSU
- Oct. 15 - Kelsey Henningsen, PSU
- Oct. 22 - Alana D'Onofrio, NAU
- Oct. 29 - Lauren Weaver, NAU
- Nov. 5 - Alyssa Nystrom, UM



Big Sky Conference Women's Soccer • November 19, 2013

BIG SKY COLLEGE CUP HISTORY

2013 NCAA COLLEGE CUP

FIRST ROUND

BYU 4, Weber State 0
November 15, 2013 • Provo, Utah
Attendance: 1897

Score By Period	1	2	ot	ot	F
Weber State	0	0	--	--	0
BYU	2	2	--	--	4

2012 NCAA COLLEGE CUP

FIRST ROUND

Stanford 3, Idaho State 0
November 9, 2012 • Palo Alto, Calif.
Attendance: 1149

Score By Period	1	2	ot	ot	F
Idaho State	0	0	--	--	0
Stanford	3	0	--	--	3

2011 NCAA COLLEGE CUP

FIRST ROUND

Stanford 3, Montana 0
November 11, 2011 • Palo Alto, Calif.
Attendance: 1035

Score By Period	1	2	ot	ot	F
Montana	0	0	--	--	0
Stanford	1	2	--	--	3

2010 NCAA COLLEGE CUP

FIRST ROUND

Stanford 3, Sacramento State 0
November 12, 2010 • Palo Alto, Calif.
Attendance: 1808

Score By Period	1	2	ot	ot	F
Stanford	0	3	--	--	0
Sacramento State	0	0	--	--	3

2009 NCAA COLLEGE CUP

FIRST ROUND

Stanford 2, Northern Arizona 0
November 12, 2009 • Palo Alto, Calif.
Attendance: 1354

Score By Period	1	2	ot	ot	F
Northern Arizona	0	0	--	--	0
Stanford	0	2	--	--	2

2008 NCAA COLLEGE CUP

FIRST ROUND

Portland 6, Northern Arizona 1
November 15, 2008 • Portland, Oregon
Attendance: 3582

Score By Period	1	2	ot	ot	F
Northern Arizona	0	1	--	--	1
Portland	3	3	--	--	6

2007 NCAA COLLEGE CUP

FIRST ROUND

Stanford 7, Sacramento State 0
November 16, 2007 • Stanford, California
Attendance: 1842

Score By Period	1	2	ot	ot	F
Sacramento State	0	0	--	--	0
Stanford	3	4	--	--	7

2006 NCAA COLLEGE CUP

FIRST ROUND

Utah 3, Idaho State 2, 2 ot
November 9, 2006 • Salt Lake City, Utah
Attendance: NA

Score By Period	1	2	ot	ot	F
Idaho State	1	1	0	0	2
Utah	0	2	0	1	3

2005 NCAA COLLEGE CUP

SECOND ROUND

Arizona 1, Weber State 0
November 12, 2005 • Salt Lake City, Utah
Attendance: 935

Score By Period	1	2	ot	ot	F
Weber State	0	0	--	--	0
Arizona	1	0	--	--	1

FIRST ROUND

Weber State 1, Brigham Young 1
November 10, 2005 • Salt Lake City, Utah

Score By Period	1	2	ot	ot	F
Weber State*	1	0	0	0	1
Brigham Young	0	1	0	0	1

* Weber State wins 4-3 on penalty kicks

2004 NCAA COLLEGE CUP

FIRST ROUND

Portland 3, Weber State 0
November 12, 2004 • Portland, Ore.
Attendance: 1810

Score By Period	1	2	ot	ot	F
Weber State	0	0	--	--	0
Portland	1	2	--	--	3

2003 NCAA COLLEGE CUP

SECOND ROUND

Brigham Young 2, Idaho State 0
November 15, 2003 • Salt Lake City, Utah
Attendance: 563

Score By Period	1	2	ot	ot	F
Brigham Young	2	0	--	--	2
Idaho State	0	0	--	--	0

FIRST ROUND

Idaho State 0, Utah 0
November 13, 2003 • Salt Lake City, Utah
Attendance: 603

Score By Period	1	2	ot	ot	F
Idaho State*	0	0	0	0	0
Utah	0	0	0	0	0

*Idaho State advanced on penalty kicks 5-4

2002 NCAA COLLEGE CUP

FIRST ROUND

Portland 3, Idaho State 0
November 14, 2002 • Provo, Utah
Attendance: 560

Score By Period	1	2	ot	ot	F
Idaho State	0	0	--	--	0
Portland	3	0	--	--	3

2001 NCAA COLLEGE CUP

FIRST ROUND

Portland 5, Idaho State 0
November 16, 2001 • Portland, Ore.
Attendance: 622

Score By Period	1	2	ot	ot	F
Idaho State	0	0	--	--	0
Portland	1	4	--	--	5

2000 NCAA COLLEGE CUP

SECOND ROUND

Washington 5, Montana 0
November 12, 2000 • Seattle, Washington
Attendance: 2038

Score By Period	1	2	ot	ot	F
Montana	0	0	--	--	0
Washington	3	2	--	--	5

FIRST ROUND

Montana 1, Washington State 0
November 8, 2000 • Pullman, Washington
Attendance: 293

Score By Period	1	2	ot	ot	F
Montana	0	1	--	--	1
Washington State	0	0	--	--	0

PLAY-IN BERTH

Montana 6, Northwestern State 0
November 4, 2000 • Missoula, Montana
Attendance: NA

Score By Period	1	2	ot	ot	F
Montana	2	4	--	--	6
Northwestern State	0	0	--	--	0

1999 NCAA COLLEGE CUP

FIRST ROUND

Texas A&M 2, Montana 1
November 10, 1999 • College Station, Texas
Attendance: 504

Score By Period	1	2	ot	ot	F
Montana	1	0	--	--	1
Texas A&M	0	2	--	--	2

Big Sky Championship Winners

Year	Champion	Coach	Score	Runner-Up
2013	Weber State	Tim Crompton	0-0, 3-0 pk's	Portland State
2012	Idaho State	Allison Gibson	0-0, 4-3 pk's	Montana
2011	Montana	Mark Plakorus	1-1, 4-3 pk's	Weber State
2010	Sacramento State	Randy Dedini	1-0	Northern Arizona
2009	Northern Arizona	Andre Luciano	4-0	Idaho State
2008	Northern Arizona	Andre Luciano	2-1	Weber State
2007	Sacramento State	Randy Dedini	3-0	Northern Colorado
2006	Idaho State	Allison Gibson	2-2, 4-3 pk's	Sacramento St.
2005	Weber State	Tim Crompton	4-1	Northern Arizona
2004	Weber State	Tim Crompton	1-0	Montana
2003	Idaho State	Gordon Henderson	1-0	Montana
2002	Idaho State	Gordon Henderson	1-0	Portland State
2001	Idaho State	Gordon Henderson	1-0	Weber State
2000	Montana	Betsy Duerksen	1-0	Northern Arizona
1999	Montana	Betsy Duerksen	2-0	Northern Arizona
1998	Weber State	Kofoed/Vudivudhana	2-1	Montana
1997	Montana	Betsy Duerksen	4-2	Weber State

Team Records In Championship Play

Team	Appearances	W	L	T	Points	GF	GA	1st	2nd
Idaho State	7	8	2	3	27	14	10	5	1
Montana	12	10	6	4	34	28	15	4	4
Weber State *	13	10	7	4	34	28	19	4	4
Northern Arizona *	9	7	7	1	22	15	18	2	4
Sacramento State	7	4	4	2	14	12	17	2	1
Portland State *	10	2	7	3	9	8	16	0	2
Northern Colorado *	4	1	3	1	4	4	8	0	1
Eastern Washington	5	0	5	0	0	4	10	0	0
Cal State Northridge	1	0	1	0	0	0	1	0	0
North Dakota	0	0	0	0	0	0	0	0	0
Southern Utah	0	0	0	0	0	0	0	0	0

All-Time All-Tournament Teams

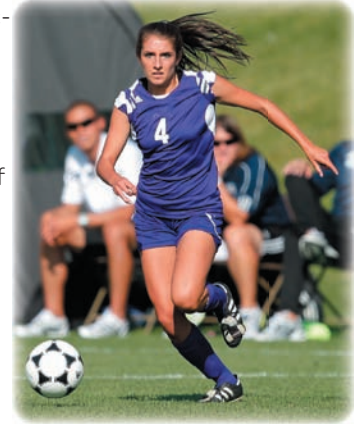
<p>2013 Ryann Waldman, WSU Mackenzie Harrison, WSU Chansi Crompton, WSU Mackenzie Day, WSU Brecken Holbrook, WSU Stacy Bair, WSU Emma Cooney, PSU Eryn Brown, PSU Caitlin Plese, PSU Tamia Hasan, PSU Kayla Henningsen, PSU Cierra Gamble, NAU Tara Rickenbach, NC</p> <p>2012 Sheridan Hapsic, MVP Allyson Stainbrook, ISU Amanda Ellsworth, ISU Vanessa Cabilan, ISU Anna Pingree, ISU Erin Craig, UM Mary Markis, UM Mackenzie Akins, UM Lauren Costa, UM Amanda Howie, PSU Chansi Crompton, WSU Mackenzie Harrison, WSU</p> <p>2011 India Watne, UM Erin Craig, UM Kristen Hoon, UM Ashley Tombelaine, UM Lauren Costa, UM Roxanne Tebbs, WSU Jessie Baddley, WSU Ryann Waldman, WSU Amanda Dutra, PSU Melissa Ferguson, PSU Brittany Dunn, UNC Kirstin Salminen, UNC</p> <p>2010 Elece McBride, SAC Leah Larot, SAC Savannah Abercrombie, SAC</p>	<p>Laura Bahno, SAC Cori Shreve, SAC Caitlin Pulver, SAC Jenna Samora, NAU Kristi Andreassen, NAU Tori Locke, NAU Sam Monahan, NAU Kirstin Salminen, UNC Eryn Brown, PSU</p> <p>2009 Jenna Samora, NAU Tori Locke, NAU Kristi Andreassen, NAU Sam Monahan, NAU Tori Howe, NAU Rebekah Schmit, NAU Karissa Henage-Fisher, ISU Annamarie Hofstetter, ISU Kacey Ball, ISU Dolly Enneking, PSU Toni Carnovale, PSU Brittney Doran, EWU</p> <p>2008 Cee Cee Odorfer, NAU Tori Howe, NAU Tori Locke, NAU Rebekah Schmit, NAU Sam Monahan, NAU Brenna Boies, NAU Hayley McCoy, WSU Whitney Smith, WSU Ashtyn Webster, WSU Mollie Nelson, WSU Sara Aspinwall, UM Dolly Enneking, PSU</p> <p>2007 Katie McCoy, SAC Katie Burton, SAC Amanda Gray, SAC Kim Kemper, SAC Missy Matzen, SAC Mandy Trojan, SAC Megan Miller, UNC Teresa Prais, UNC</p>	<p>Jessica Zimmerman, UNC Juli Edwards, PSU Kat Robertson, PSU Natalie Blaylock, WSU</p> <p>2006 Lyndsay Gensler, ISU Natalie Graham, ISU Sarah Howard, SAC Maggie Murphy, SAC Jennifer Loo, ISU Chantal Kim, ISU Linsey Winans, UM MacKenzie Murphy, UM Jill Christofferson, ISU Kara Taylor, SAC Katie McCoy, SAC Linsey McFarland, WSU</p> <p>2005 Rochelle Hoover, WSU Cee Cee Odorfer, NAU Linsey McFarland, WSU Tara Cozzetto, NAU Shelli Gough, WSU Stefanie Smith, NAU Ashley Wood, WSU Kaitlyn Manakas, NAU Sarah Howard, SAC Hayley McCoy, WSU Kandice Golar, WSU Ashtyn Webster, WSU Christina Loyash, NAU Jennie Summers, EWU</p> <p>2004 Rochelle Hoover, WSU Cyeeta Mott, EWU Annie Peccia, PSU Nikki Bolstad, UM Tara Schwager, UM Wendy Stuker, UM Lindsay Winans, UM Becky Clark, WSU Naomi Felix, WSU Erica Kilbourne, WSU</p>	<p>2003 Hollie Christensen, ISU Shannon Boyle, ISU Jennifer Loo, ISU Shawna Park, ISU Janel Smith, ISU Nikki Bolstad, UM Casey Joyner, UM Wendy Stuker, UM Sierra Cristiano, NAU Jesyca Rosholt, NAU Becky Clark, WSU Kaleen Grant, WSU</p> <p>2002 Shannon Boyle, ISU Brooke Alton, ISU Stacey Peterson, ISU Ilsa Gramer, ISU Katie Miyake, PSU Jessie Corr, PSU Carly Sawhill, PSU Megan Plinski, PSU Amy Orr, PSU Abbey Mathis, EWU Sarah Windham, EWU Sarah Braseth, UM</p> <p>2001 Brooke Alton, ISU Hollie Christensen, ISU Trish Bolander, ISU Holly Emery, ISU Liz Roberts, UM Mattea Stanger, SAC Katie DeClerq, SAC Lori Kerswell, SAC Becky Clark, WSU Natalie Hensley, WSU Anna Neisen, WSU Jen Cosnyka, WSU Meagan Thunell, WSU</p> <p>2000 Amy Wronski, UM Holly Jones, NAU Liz Roberts, UM</p>	<p>Amy Schlatter, UM Jill Schade, ISU Shannon Forslund, UM Jodi Campbell, UM Sarah Pachan, NAU Erin Rummens, NAU Kerri Houck, UM Krista Earp, NAU Natalie Hiller, UM Linsey McFarland, WSU Melanie Stratford, WSU</p> <p>1999 Misty Hall, UM Celeste Collins, WSU Jessica Crespo, CSN Erin Broadwell, CSN Deedee Jimison, CSN Erin Rummens, NAU Rebekah Breech, NAU Raegin Eyre, NAU Kate Soetaert, NAU Heather Olson, UM Michele Badilla-Gesek, UM Shannon Forslund, UM</p> <p>1998 Lisa Anthony, WSU Celeste Collins, WSU Tara Ferrin, WSU Tricia Ferrin, WSU Meagan Thunell, WSU Karen Hardy, UM Sara Overgaag, UM Shannon Forslund, UM Michele Badilla-Gesek, UM Holly Jones, NAU Raegin Eyre, NAU Deszeray Dougherty, EWU</p>
--	--	---	---	--

Bold - Tournament MVP

2013 WOMEN'S SOCCER ALL-CONFERENCE TEAM & MVP'S

OGDEN, Utah (Nov. 5, 2013) - The Big Sky Conference has announced its 2013 women's soccer All-Conference team and individual award winners. The selections were made in a vote by the league's 10 head coaches Monday morning. Coaches were not allowed to vote for their own players.

Weber State sophomore Mackenzie Harrison was named the Offensive MVP, while Portland State junior Kayla Henningsen was named Defensive MVP. Northern Colorado senior Natalie D'Adamio and Portland State sophomore Caitlin Plese were named Co-Goalkeeper of the Year. Portland State freshman Abbey Bergquist was named Newcomer of the Year.



Mackenzie Harrison

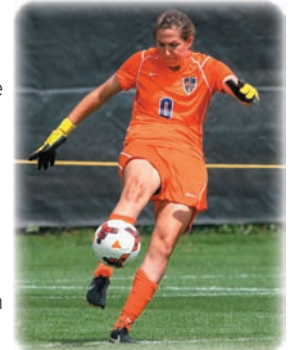


Kayla Henningsen

Harrison finished the season with six goals and one assist in conference play. Harrison's 13 points were tied for tops in the conference. The sophomore from Kaysville, Utah, led a Weber State offense that was tied for first in the league with 17 goals. On two different occasions, Harrison scored two goals against conference opponents. After those performances, Harrison earned Offensive Player of the Week awards.

Portland State's Kayla Henningsen, a junior from Beaverton, Ore., was one of the leaders of a defense that only allowed three goals in conference play, leading the league. The Vikings had a total of six shutouts in conference. Her defensive play helped Portland State win the Big Sky regular-season title, going unbeaten in the league for the first time in school history.

Northern Colorado's Natalie D'Adamio, a senior from Littleton, Colo., was one of the leaders of a defense that only allowed five goals in conference play. D'Adamio ranked second in the league with a .64 goals against average. This marks the third straight year that NC has earned the Goalkeeper of the year award, Kirstin Salminen was the 2011 winner and D'Adamio is the reigning 2012 award winner.



Natalie D'Adamio

Portland State's Caitlin Plese, a sophomore from Enumclaw, Wash., led a defense that only allowed three goals in conference play. Plese ranked first in the league with a .32 goals against average, ranked first in save percentage with .893 and led the league with six shutouts. This is the first time in school history that a Portland State goalkeeper has won the award (the award began the 2011 season).



Caitlin Plese

Portland State's Abbey Bergquist, a freshman from Tumwater, Wash., played in all 17 matches for the Vikings, starting in 16 of them. The freshman finished the season with two goals and two assists, giving her six points.

The 2013 Golden Boot Award is awarded to the player(s) who lead the conference in points collected during league play. Weber State forward Mackenzie Harrison tallied six goals and one assist for 13 points in nine conference matches. Northern Arizona's Cierra Gamble, a sophomore from Corona, Calif., also had 13 points after recording four goals and five assists in conference. With 13 points each, Harrison and Gamble are the Big Sky's 2013 Golden Boot Award winners. This marks the fourth time Weber State has had a player win the Golden Boot and the second time Northern Arizona has had a player win the Golden Boot.

Corona, Calif., also had



Abbey Bergquist

Northern Colorado's Natalie D'Adamio, Idaho State's Amanda Ellsworth, and Weber State's Brecken Holbrook and Chansi Crompton were selected to the First Team All-Conference for the second straight year.

Idaho State had two players receive First-Team honors in Ellsworth and senior defender Alyson Stainbrook.

Northern Colorado placed three players on the First-Team in D'Adamio, senior midfielder Tara Rickenbach and junior forward Juliana Grover.

Portland State had three players earn First-Team honors in Plese, Henningsen and sophomore midfielder Cori Bianchini. Weber State had three sophomores placed on the First Team in Crompton, Harrison and Holbrook. Northern Arizona had two players earn First-Team honors in Gamble and senior defender Alana D'Onofrio.

Portland State, Northern Arizona, Weber State and Northern Colorado will compete in the Big Sky Championship this weekend in Portland, Ore.

All of the conference tournament matches can be viewed on WatchBigSky.com.

Big Sky Conference 2013 Soccer Individual Award Winners

Offensive MVP

Mackenzie Harrison, Weber State

Defensive MVP

Kayla Henningsen, Portland State

Newcomer of the Year

Abbey Bergquist, Portland State

Co-Goalkeeper of the Year

Natalie D'Adamio, Northern Colorado
Caitlin Plese, Portland State



FIRST TEAM

Position	Name	School	Year
Goalkeeper	%Natalie D'Adamio	Northern Colorado	Senior
	Caitlin Plese	Portland State	Sophomore
Defenders	Allyson Stainbrook	Idaho State	Senior
	Alana D'Onofrio	Northern Arizona	Senior
	Kayla Henningsen	Portland State	Junior
	%Brecken Holbrook	Weber State	Sophomore
Midfielders	Cierra Gamble	Northern Arizona	Sophomore
	Tara Rickenbach	Northern Colorado	Senior
	Cori Bianchini	Portland State	Sophomore
	%Chansi Crompton	Weber State	Sophomore
Forwards	%Amanda Ellsworth	Idaho State	Junior
	Juliana Grover	Northern Colorado	Junior
	Mackenzie Harrison	Weber State	Sophomore

%Two-Time Selection

SECOND TEAM

Position	Name	School	Year
Goalkeeper	Sheridan Hapsic	Idaho State	Sophomore
Defenders	Brooke Moody	Montana	Junior
	Ambree Bellin	Northern Colorado	Junior
	Kristin Moyer	Portland State	Freshman
	Kelsey Henningsen	Portland State	Junior
Midfielders	India Watne	Montana	Senior
	Maddey Frey	Montana	Senior
	Abbey Bergquist	Portland State	Freshman
	Jennifer Lum	Sacramento State	Freshman
	Mackenzie Day	Weber State	Junior
Forwards	Haley Wingender	Northern Arizona	Sophomore
	Eryn Brown	Portland State	Junior
	Alyssa Anderson	Sacramento State	Sophomore

HONORABLE MENTION

Goalkeepers - Kristi Hestdalen - North Dakota; Lauren Weaver - Northern Arizona; Kimberly Mata - Sacramento State

Defenders - Kayla Sutter - Eastern Washington; Lia Margolis - Idaho State; Kirsten Olson - North Dakota; Diane Buzzard - Northern Arizona; Sarah Tarver - Northern Arizona; Danny Muniz - Northern Arizona; Adrienne Jordan - Northern Colorado; Torie Morris - Portland State; McKenna Swanson - Sacramento State; Kassi Anast - Sacramento State; Katie Jones - Southern Utah; Marissa Yamane - Weber State; Bailey Eames - Weber State; Shaylee Petersen - Weber State

Midfielders - Siara Byers - Eastern Washington; Allyssa Kenney - Idaho State; Mackenzie Akins - Montana; Tyler Adair - Montana; Elinor Priest - Northern Arizona; Chandler Guetz - Northern Colorado; Jessica Small - Sacramento State; Shelby Green - Southern Utah; Kendra Smith - Weber State

Forwards - Cassie Black - Eastern Washington; Whitney Peterson - Idaho State; Savannah Berry - Northern Arizona; Danielle Birdsall - Northern Colorado; Lynsey Gaines - Portland State; Jordyn Rolling - Sacramento State; Gabriela Trenton - Sacramento State; Breanna Brown - Southern Utah

Eastern Washington Eagles

(1-8, 3-15)

Date	Opponent	Results
8/23	Gonzaga	L 1-0
8/25	Seattle	L 2-0
8/30	vs. Nevada ¹	L 2-0
9/1	at Washington State	L 1-0
9/8	Fresno State	L 3-2, 2OT
9/13	at Idaho	W 2-1
9/17	at Gonzaga	L 3-0
9/20	vs. SIUE ²	L 2-1, 2OT
9/22	at North Dakota State ²	W 3-0
9/26	at Idaho State *	L 1-0
9/28	at Weber State *	L 3-0
10/4	Portland State *	L 2-0
10/6	Sacramento State *	W 2-1, OT
10/11	at Northern Colorado *	L 2-1
10/13	at North Dakota *	L 3-1
10/18	at Montana *	L 1-0
10/25	Southern Utah *	L 3-0
10/27	Northern Arizona *	L 2-0

¹ Played in Sacramento, Calif.

² North Dakota State Tourn. - Fargo, N.D.

Idaho State Bengals

(4-3-2, 7-8-2)

Date	Opponent	Results
8/23	Boise State	W 2-1, OT
8/25	Idaho	W 2-0
8/30	at Texas Tech	L 3-0
9/3	Utah Valley	L 4-2
9/7	Utah State	L 3-2
9/13	at Hawaii ¹	L 4-1
9/15	vs. Florida Gulf Coast ¹	L 5-1
9/22	at Wyoming	W 1-0, 2OT
9/26	Eastern Washington *	W 1-0
9/28	Montana *	T 1-1, 2OT
10/4	at Northern Arizona *	L 2-1
10/6	at Southern Utah *	W 2-0
10/12	Weber State *	T 1-1, 2OT
10/17	Sacramento State *	W 2-1
10/19	Portland State *	L 1-0
10/25	at North Dakota *	W 2-0
10/27	at Northern Colorado *	L 2-0

¹ Hawaii Tournament - Honolulu, Hawaii

University of Montana Grizzlies

(3-5-1, 7-8-4)

Date	Opponent	Results
8/23	Air Force ¹	T 1-1, 2OT
8/25	Wyoming ¹	T 0-0, 2OT
8/30	at Loyola Marymount	L 2-1
9/1	at Cal State Fullerton	L 2-0
9/5	Houston Baptist ²	W 1-0
9/9	Utah Valley ²	W 3-1
9/13	at Nebraska-Omaha	T 3-3, 2OT
9/15	at Creighton	L 2-1 OT
9/20	Nevada	W 2-0
9/26	at Weber State *	L 2-0
9/28	at Idaho State *	T 1-1, 2OT
10/4	Sacramento State *	L 3-0
10/6	Portland State *	L 1-0
10/11	at North Dakota *	W 3-0
10/13	at Northern Colorado *	L 4-0
10/18	Eastern Washington *	W 1-0
10/25	Northern Arizona *	L 2-1
10/27	Southern Utah *	W 3-1
11/1	at UC Riverside	W 4-0

¹ Montana Kickoff Invitational - Missoula, Mont.

² Montana Cup - Missoula, Mont.

University of North Dakota

(1-8-0, 2-16-1)

Date	Opponent	Results
8/23	vs. Xavier ¹	L 3-0
8/25	vs. Akron ¹	L 4-1
8/30	at Creighton	L 6-0
9/1	at Nebraska Omaha	L 2-0
9/6	at Western Illinois	L 2-0
9/8	at Iowa State	L 4-0
9/11	North Dakota State	W 4-2
9/15	Boise State	L 3-1
9/20	South Dakota	T 2-2, 2OT
9/22	at South Dakota State	L 6-1
9/27	at Sacramento State *	L 1-0
9/29	at Portland State *	L 1-0
10/4	Northern Colorado *	L 2-1
10/11	Montana *	L 3-0
10/13	Eastern Washington *	W 3-1
10/18	at Southern Utah *	L 3-2
10/20	at Northern Arizona *	L 2-0
10/25	Idaho State *	L 2-0
10/27	Weber State *	L 3-0

¹ Boilermaker Cup - West Lafayette, Ind.

Northern Arizona Lumberjacks

(7-2-0, 11-5-3)

Date	Opponent	Results
8/23	at Long Beach State	W 1-0
8/25	Lamar	W 3-2
8/30	at CSU Bakersfield	W 1-0
9/1	at UC Riverside	T 1-1, 2OT
9/8	UNLV	T 0-0, 2OT
9/13	Grand Canyon	W 1-0
9/15	Colorado State	T 1-1, 2OT
9/20	UTEP	L 4-3
9/22	Hawaii	L 1-0, OT
9/28	at Southern Utah *	W 3-2, 2OT
10/4	Idaho State *	W 2-1
10/6	Weber State *	L 2-1
10/11	at Sacramento State *	W 3-0
10/13	at Portland State *	L 2-1, OT
10/18	Northern Colorado *	W 1-0, OT
10/20	North Dakota *	W 2-0
10/25	at Montana *	W 2-1
10/27	at Eastern Washington *	W 2-0
11/7	vs. Weber State [*]	L 3-0

^{*}Big Sky Tournament Match - Portland, Ore.

* Big Sky Conference Match

All times local to site/subject to change

Northern Colorado Bears

(5-2-2, 9-6-5)

Date	Opponent	Results
8/23	vs. Colorado ¹	L 3-0
8/25	vs. Denver ¹	L 3-0
8/30	at Nebraska-Omaha	W 4-0
9/1	at Creighton	L 4-1
9/6	Air Force	W 1-0
9/13	New Mexico State	T 0-0, 2OT
9/18	at Wyoming	W 1-0
9/20	vs. UNLV ²	T 1-1, 2OT
9/22	vs. Stony Brook ²	W 1-0
9/27	at Portland State *	L 3-1
9/29	at Sacramento State *	T 0-0, 2OT
10/4	at North Dakota *	W 2-1
10/11	Eastern Washington *	W 2-1
10/13	Montana *	W 4-0
10/18	at Northern Arizona *	L 1-0, OT
10/20	at Southern Utah *	W 2-1, OT
10/25	Weber State *	T 1-1, 2OT
10/27	Idaho State *	W 2-0
11/1	Colorado State	T 2-2, 2OT
11/7	at Portland State ^	L 2-0

¹ Colorado Cup

² Colorado Tournament - Boulder, Colo.

^ Big Sky Tournament Match - Portland, Ore.

Portland State Vikings

(8-0-1, 12-4-3)

Date	Opponent	Results
8/23	at Oregon	L 3-0
8/25	#14 Marquette	L 3-2
8/30	at UNLV ¹	L 5-0
9/1	vs. New Mexico St. ¹	W 7-0
9/7	CSU Bakersfield	W 4-0
9/13	vs. Florida Gulf Coast ²	L 1-0
9/15	at Hawaii ²	W 2-0
9/22	San Francisco	T 0-0, 2OT
9/27	Northern Colorado *	W 3-1
9/29	North Dakota *	W 1-0
10/4	at Eastern Washington *	W 2-0
10/6	at Montana *	W 1-0
10/11	Southern Utah *	T 0-0, 2OT
10/13	Northern Arizona *	W 2-1, OT
10/17	at Weber State *	W 3-1
10/19	at Idaho State *	W 1-0
10/25	at Sacramento State *	W 1-0
11/7	Northern Colorado ^	W 2-0
11/9	Weber State ^	T 0-0

¹ UNLV Tournament - Las Vegas, Nev.

² Hawaii Tournament - Honolulu, Hawaii

^ Big Sky Tournament Match - Portland, Ore.

WSU Advances 3-0 on pk's

Sacramento State Hornets

(3-5-1, 7-9-2)

Date	Opponent	Results
8/23	at UC Davis	L 1-0
8/30	at Cal Poly	L 4-0
9/1	at CSU Bakersfield	W 3-1
9/6	UNLV	L 1-0, OT
9/8	San Jose State	W 1-0
9/11	Fresno Pacific	W 1-0
9/15	at Nevada	L 3-2
9/20	Fresno State	T 2-2, 2OT
9/22	at Pacific	W 2-1
9/27	North Dakota *	W 1-0
9/29	Northern Colorado *	T 0-0, 2OT
10/4	at Montana *	W 3-0
10/6	at Eastern Washington *	L 2-1, OT
10/11	Northern Arizona *	L 3-0
10/13	Southern Utah *	W 4-0
10/17	at Idaho State *	L 2-1
10/19	at Weber State *	L 3-1
10/25	Portland State *	L 1-0

Southern Utah Thunderbirds

(3-5-1, 6-11-1)

Date	Opponent	Results
8/23	at CSU Bakersfield	L 4-1
8/28	UC Santa Barbara	W 4-3
8/30	vs. Vermont ¹	W 3-1
9/1	vs. Appalachian State ¹	L 2-1
9/8	at Utah	L 6-2
9/13	at Arizona ²	L 6-1
9/15	vs. Arizona State ²	L 4-0
9/20	UC Riverside	W 1-0, OT
9/22	UTEP	L 2-1
9/28	Northern Arizona *	L 3-2, 2OT
10/4	Weber State *	W 2-1
10/6	Idaho State *	L 2-0
10/11	at Portland State *	T 0-0, 2OT
10/13	at Sacramento State *	L 4-0
10/18	North Dakota *	W 3-2
10/20	Northern Colorado *	L 2-1, OT
10/25	at Eastern Washington *	W 3-0
10/27	at Montana *	L 3-1

¹ Colorado College Tourn. - Colorado Springs, Colo.

² Arizona Cats Classic - Tucson, Ariz.

Weber State Wildcats

(5-2-2, 10-5-5)

Date	Opponent	Results
8/23	Idaho	W 3-0
8/26	UC Santa Barbara	T 1-1, 2OT
8/29	at Utah Valley	W 2-1, 2OT
9/6	at Boise State ¹	T 0-0, 2OT
9/8	vs. Washington State ¹	L 1-0
9/13	at Wyoming	W 3-2
9/15	at Utah	L 4-0
9/22	at Utah State	W 1-0
9/26	Montana *	W 2-0
9/28	Eastern Washington *	W 3-0
10/4	at Southern Utah *	L 2-1
10/6	at Northern Arizona *	W 2-1
10/12	at Idaho State *	T 1-1, 2OT
10/17	Portland State *	L 3-1
10/19	Sacramento State *	W 3-1
10/25	at Northern Colorado *	T 1-1, 2OT
10/27	at North Dakota *	W 3-0
11/7	vs. Northern Arizona ^	W 3-0
11/9	at Portland State ^	T 0-0

WSU advances 3-0 on pk's

¹ Boise State Tournament - Boise, Idaho

^ Big Sky Tournament Match - Portland, Ore.

- NCAA Tournament Match - Provo, Utah

* Big Sky Conference Match

All times local to site/subject to change

**2013 Big Sky Conference
CONFERENCE SOCCER STATISTICS
Through games of Nov 19, 2013 (All games)**

Team Miscellaneous	GP	Shots	Fouls	Offside	Corners	PK-PKA	YC-RC
Eastern Washington	18	221	142	6	56	0-0	8-0
Idaho State	17	164	181	11	58	2-2	24-1
Montana	19	304	174	24	90	2-2	5-0
North Dakota	19	146	152	13	28	2-1	8-0
Northern Arizona	19	210	170	41	57	1-1	12-0
Northern Colorado	20	237	151	23	89	4-2	8-1
Portland State	19	235	205	34	69	1-1	14-2
Sacramento State	18	205	138	30	87	0-0	3-0
Southern Utah	18	227	212	26	67	3-3	15-0
Weber State	20	291	156	28	61	1-1	15-2

SHOTS	GP	No.	Avg/G
1. Montana	19	304	16.00
2. Weber State	20	291	14.55
3. Northern Colorado	20	237	11.85
4. Portland State	19	235	12.37
5. Southern Utah	18	227	12.61
6. Eastern Washington	18	221	12.28
7. Northern Arizona	19	210	11.05
8. Sacramento State	18	205	11.39
9. Idaho State	17	164	9.65
10. North Dakota	19	146	7.68

POINTS	GP	No.	Avg/G
1. Portland State	19	87	4.58
2. Weber State	20	81	4.05
Northern Arizona	19	81	4.26
4. Northern Colorado	20	76	3.80
5. Southern Utah	18	69	3.83
6. Montana	19	67	3.53
7. Sacramento State	18	66	3.67
8. Idaho State	17	52	3.06
9. North Dakota	19	38	2.00
10. Eastern Washington	18	31	1.72

GOALS	GP	No.	Avg/G
1. Portland State	19	31	1.63
2. Weber State	20	30	1.50
3. Northern Arizona	19	28	1.47
4. Southern Utah	18	26	1.44
5. Northern Colorado	20	25	1.25
Montana	19	25	1.32
7. Sacramento State	18	22	1.22
8. Idaho State	17	21	1.24
9. North Dakota	19	15	0.79
10. Eastern Washington	18	12	0.67

GOALS PER GAME	GP	No.	Avg/G
1. Portland State	19	31	1.63
2. Weber State	20	30	1.50
3. Northern Arizona	19	28	1.47
4. Southern Utah	18	26	1.44
5. Montana	19	25	1.32
6. Northern Colorado	20	25	1.25
7. Idaho State	17	21	1.24
8. Sacramento State	18	22	1.22
9. North Dakota	19	15	0.79
10. Eastern Washington	18	12	0.67

ASSISTS	GP	No.	Avg/G
1. Northern Colorado	20	26	1.30
2. Northern Arizona	19	25	1.32
Portland State	19	25	1.32
4. Sacramento State	18	22	1.22
5. Weber State	20	21	1.05
6. Montana	19	17	0.89
Southern Utah	18	17	0.94
8. Idaho State	17	10	0.59
9. North Dakota	19	8	0.42
10. Eastern Washington	18	7	0.39

ASSISTS PER GAME	GP	No.	Avg/G
1. Northern Arizona	19	25	1.32
Portland State	19	25	1.32
3. Northern Colorado	20	26	1.30
4. Sacramento State	18	22	1.22
5. Weber State	20	21	1.05
6. Southern Utah	18	17	0.94
7. Montana	19	17	0.89
8. Idaho State	17	10	0.59
9. North Dakota	19	8	0.42
10. Eastern Washington	18	7	0.39

GOALS ALLOWED	GP	No.	Avg/G
1. Portland State	19	15	0.79
2. Northern Arizona	19	20	1.05
3. Weber State	20	22	1.10
4. Northern Colorado	20	23	1.15
5. Sacramento State	18	24	1.33
6. Montana	19	25	1.32
7. Idaho State	17	28	1.65
8. Eastern Washington	18	33	1.83
9. Southern Utah	18	45	2.50
10. North Dakota	19	52	2.74

GOALS AGAINST AVERAGE	GP	GA	Minutes	GA Avg.
1. Portland State	19	15	1776:50	0.76
2. Northern Arizona	19	20	1804:56	1.00
3. Weber State	20	22	1913:25	1.03
4. Northern Colorado	20	23	1907:36	1.09
5. Montana	19	25	1793:48	1.25
6. Sacramento State	18	24	1675:53	1.29
7. Idaho State	17	28	1580:42	1.59
8. Eastern Washington	18	33	1649:32	1.80
9. Southern Utah	18	45	1673:24	2.42
10. North Dakota	19	52	1730:00	2.71

**2013 Big Sky Conference
CONFERENCE SOCCER STATISTICS
Through games of Nov 19, 2013 (All games)**

SAVES	GP	No.	Avg/G
1. North Dakota	19	135	7.11
2. Sacramento State	18	113	6.28
3. Northern Colorado	20	104	5.20
4. Idaho State	17	94	5.53
5. Eastern Washington	18	93	5.17
6. Northern Arizona	19	84	4.42
Southern Utah	18	84	4.67
8. Montana	19	78	4.11
9. Portland State	19	76	4.00
10. Weber State	20	64	3.20

SHUTOUTS	GP	No.	Avg/G
1. Portland State	19	12	0.63
2. Northern Arizona	19	8	0.42
Northern Colorado	20	8	0.40
Weber State	20	8	0.40
5. Sacramento State	18	6	0.33
Montana	19	6	0.32
7. Idaho State	17	5	0.29
8. Southern Utah	18	3	0.17
9. Eastern Washington	18	1	0.06
10. North Dakota	19	0	0.00

FOULS	GP	No.	Avg/G
1. Southern Utah	18	212	11.78
2. Portland State	19	205	10.79
3. Idaho State	17	181	10.65
4. Montana	19	174	9.16
5. Northern Arizona	19	170	8.95
6. Weber State	20	156	7.80
7. North Dakota	19	152	8.00
8. Northern Colorado	20	151	7.55
9. Eastern Washington	18	142	7.89
10. Sacramento State	18	138	7.67

CORNERS	GP	No.	Avg/G
1. Montana	19	90	4.74
2. Northern Colorado	20	89	4.45
3. Sacramento State	18	87	4.83
4. Portland State	19	69	3.63
5. Southern Utah	18	67	3.72
6. Weber State	20	61	3.05
7. Idaho State	17	58	3.41
8. Northern Arizona	19	57	3.00
9. Eastern Washington	18	56	3.11
10. North Dakota	19	28	1.47

OFFSIDES	GP	No.	Avg/G
1. Northern Arizona	19	41	2.16
2. Portland State	19	34	1.79
3. Sacramento State	18	30	1.67
4. Weber State	20	28	1.40
5. Southern Utah	18	26	1.44
6. Montana	19	24	1.26
7. Northern Colorado	20	23	1.15
8. North Dakota	19	13	0.68
9. Idaho State	17	11	0.65
10. Eastern Washington	18	6	0.33

YELLOW CARDS	GP	No.	Avg/G
1. Idaho State	17	24	1.41
2. Weber State	20	15	0.75
Southern Utah	18	15	0.83
4. Portland State	19	14	0.74
5. Northern Arizona	19	12	0.63
6. North Dakota	19	8	0.42
Northern Colorado	20	8	0.40
Eastern Washington	18	8	0.44
9. Montana	19	5	0.26
10. Sacramento State	18	3	0.17

**2013 Big Sky Conference
CONFERENCE SOCCER STATISTICS
Through games of Nov 19, 2013 (All games)**

Team	Conference	Pct.	GF	GA	Overall	Pct.	GF	GA	Current unbeaten streak
Portland State	8-0-1	.944	14	3	12-4-3	.711	31	15	Portland State -- 10-0-3
Northern Arizona	7-2-0	.778	17	8	11-5-3	.658	28	20	Montana -- 2-0-0
Weber State	5-2-2	.667	17	9	10-5-5	.625	30	22	
Northern Colorado	5-2-2	.667	14	8	9-6-5	.575	25	23	
Idaho State	4-3-2	.556	10	8	7-8-2	.471	21	28	
Montana	3-5-1	.389	9	14	7-8-4	.474	25	25	
Sacramento State	3-5-1	.389	11	11	7-9-2	.444	22	24	
Southern Utah	3-5-1	.389	12	17	6-11-1	.361	26	45	
Eastern Washington	1-8-0	.111	4	18	3-15-0	.167	12	33	
North Dakota	1-8-0	.111	6	18	2-16-1	.132	15	52	

Team Miscellaneous	GP	GF-GA	Score Avg.	Margin	PK-Att	Shots	Saves	Save%	Corners
Eastern Washington	18	12-33	0.67-1.83	-1.17	0-0	221	93	73.8	56
Idaho State	17	21-28	1.24-1.65	-0.41	2-2	164	94	77.0	58
Montana	19	25-25	1.32-1.32	+0.00	2-2	304	78	75.7	90
North Dakota	19	15-52	0.79-2.74	-1.95	1-2	146	135	72.2	28
Northern Arizona	19	28-20	1.47-1.05	+0.42	1-1	210	84	80.8	57
Northern Colorado	20	25-23	1.25-1.15	+0.10	2-4	237	104	81.9	89
Portland State	19	31-15	1.63-0.79	+0.84	1-1	235	76	83.5	69
Sacramento State	18	22-24	1.22-1.33	-0.11	0-0	205	113	82.5	87
Southern Utah	18	26-45	1.44-2.50	-1.06	3-3	227	84	65.1	67
Weber State	20	30-22	1.50-1.10	+0.40	1-1	291	64	74.4	61

Attendance	Home	Average	Away	Average	Neutral	Average	Total	Average
Eastern Washington	7-1111	159	9-3009	334	2-56	28	18-4176	232
Idaho State	9-3654	406	7-3446	492	1-0	0	17-7100	418
Montana	10-2872	287	9-2546	283	0-0	0	19-5418	285
North Dakota	8-1206	151	9-2378	264	2-246	123	19-3830	202
Northern Arizona	10-5470	547	8-2465	308	1-80	80	19-8015	422
Northern Colorado	7-2070	296	9-1903	211	4-4018	1004	20-7991	400
Portland State	9-1864	207	8-4265	533	2-0	0	19-6129	323
Sacramento State	9-2204	245	9-3671	408	0-0	0	18-5875	326
Southern Utah	8-1137	142	7-2997	428	3-246	82	18-4380	243
Weber State	6-1929	322	12-7235	603	2-232	116	20-9396	470
Totals	83-23517	283	87-33915	390	17-4878	287	187-62310	333

**2013 Big Sky Conference
INDIVIDUAL SOCCER STATISTICS
Through games of Nov 19, 2013 (All games)**

To be ranked, a player must appear in at least 50.0% of their team's games, goalies at least 33.0% of their team's minutes.

SHOTS	GP	No.	Avg/G
1. Watne, India-UM	19	60	3.16
2. Harrison, Mackenzie-WSU	20	53	2.65
3. Black, Cassie-EWU	18	51	2.83
4. Akins, Mackenzie-UM	19	50	2.63
5. Lum, Jennifer-SAC	18	43	2.39
6. Crompton, Chansi-WSU	20	42	2.10
7. Anderson, Alyssa-SAC	17	39	2.29
8. Grover, Juliana-UNC	18	38	2.11
Brown, Eryn-PSU	19	38	2.00
10. Adair, Tyler-UM	19	34	1.79

SHOTS PER GAME	GP	No.	Avg/G
1. Watne, India-UM	19	60	3.16
2. Black, Cassie-EWU	18	51	2.83
3. Harrison, Mackenzie-WSU	20	53	2.65
4. Akins, Mackenzie-UM	19	50	2.63
5. Lum, Jennifer-SAC	18	43	2.39
6. Anderson, Alyssa-SAC	17	39	2.29
7. Grover, Juliana-UNC	18	38	2.11
8. Crompton, Chansi-WSU	20	42	2.10
9. Brown, Eryn-PSU	19	38	2.00
10. Ellsworth, Amanda-ISU	17	31	1.82

POINTS	GP	G	A	Pts	Avg/G
1. Brown, Eryn-PSU	19	8	5	21	1.11
2. Harrison, Mackenzie-WSU	20	9	1	19	0.95
3. Ellsworth, Amanda-ISU	17	7	1	15	0.88
Anderson, Alyssa-SAC	17	7	1	15	0.88
Gamble, Cierra-NAU	19	5	5	15	0.79
6. Bianchini, Cori-PSU	17	5	4	14	0.82
7. Rolling, Jordyn-SAC	18	5	3	13	0.72
Wingender, Haley-NAU	18	5	3	13	0.72
Bair, Stacy-WSU	18	5	3	13	0.72
10. Watne, India-UM	19	5	2	12	0.63
Crompton, Chansi-WSU	20	2	8	12	0.60
Day, Mackenzie-WSU	20	6	0	12	0.60

POINTS PER GAME	GP	G	A	Pts	Avg/G
1. Brown, Eryn-PSU	19	8	5	21	1.11
2. Harrison, Mackenzie-WSU	20	9	1	19	0.95
3. Anderson, Alyssa-SAC	17	7	1	15	0.88
Ellsworth, Amanda-ISU	17	7	1	15	0.88
5. Bianchini, Cori-PSU	17	5	4	14	0.82
6. Gamble, Cierra-NAU	19	5	5	15	0.79
7. Bair, Stacy-WSU	18	5	3	13	0.72
Rolling, Jordyn-SAC	18	5	3	13	0.72
Wingender, Haley-NAU	18	5	3	13	0.72
10. Watne, India-UM	19	5	2	12	0.63

GOALS	GP	No.	Avg/G
1. Harrison, Mackenzie-WSU	20	9	0.45
2. Brown, Eryn-PSU	19	8	0.42
3. Ellsworth, Amanda-ISU	17	7	0.41
Anderson, Alyssa-SAC	17	7	0.41
5. Day, Mackenzie-WSU	20	6	0.30
6. Bianchini, Cori-PSU	17	5	0.29
Rolling, Jordyn-SAC	18	5	0.28
Wingender, Haley-NAU	18	5	0.28
Bair, Stacy-WSU	18	5	0.28
Watne, India-UM	19	5	0.26
Gamble, Cierra-NAU	19	5	0.26
Ortiz-Lanier, Essence-UNC	20	5	0.25

GOALS PER GAME	GP	No.	Avg/G
1. Harrison, Mackenzie-WSU	20	9	0.45
2. Brown, Eryn-PSU	19	8	0.42
3. Anderson, Alyssa-SAC	17	7	0.41
Ellsworth, Amanda-ISU	17	7	0.41
5. Day, Mackenzie-WSU	20	6	0.30
6. Bianchini, Cori-PSU	17	5	0.29
7. Wingender, Haley-NAU	18	5	0.28
Rolling, Jordyn-SAC	18	5	0.28
Bair, Stacy-WSU	18	5	0.28
10. Gamble, Cierra-NAU	19	5	0.26
Watne, India-UM	19	5	0.26

ASSISTS	GP	No.	Avg/G
1. Crompton, Chansi-WSU	20	8	0.40
2. Lancia, Rebecca-UNC	18	5	0.28
Brown, Eryn-PSU	19	5	0.26
Akins, Mackenzie-UM	19	5	0.26
Gamble, Cierra-NAU	19	5	0.26
Bellin, Ambree-UNC	20	5	0.25
7. Bianchini, Cori-PSU	17	4	0.24
Lum, Jennifer-SAC	18	4	0.22
9. Berry, Savannah-NAU	15	3	0.20
Gaines, Lynsey-PSU	17	3	0.18
Rolling, Jordyn-SAC	18	3	0.17
Wingender, Haley-NAU	18	3	0.17
Bair, Stacy-WSU	18	3	0.17
Sutter, Kayla-EWU	18	3	0.17
Henningsen, Kayla-PSU	18	3	0.17
Cella, Ashley-SAC	18	3	0.17
Muniz, Danny-NAU	19	3	0.16
Petersen, Shaylee-WSU	19	3	0.16
Morris, Paige-UNC	20	3	0.15
Birdsall, Danielle-UNC	20	3	0.15

ASSISTS PER GAME	GP	No.	Avg/G
1. Crompton, Chansi-WSU	20	8	0.40
2. Lancia, Rebecca-UNC	18	5	0.28
3. Akins, Mackenzie-UM	19	5	0.26
Gamble, Cierra-NAU	19	5	0.26
Brown, Eryn-PSU	19	5	0.26
6. Bellin, Ambree-UNC	20	5	0.25
7. Bianchini, Cori-PSU	17	4	0.24
8. Lum, Jennifer-SAC	18	4	0.22
9. Berry, Savannah-NAU	15	3	0.20
Simon, Allie-UM	10	2	0.20

**2013 Big Sky Conference
INDIVIDUAL SOCCER STATISTICS
Through games of Nov 19, 2013 (All games)**

GAME-WINNING GOALS	GP	No.	Avg/G
1. Bianchini, Cori-PSU	17	4	0.24
Harrison, Mackenzie-WSU	20	4	0.20
3. Ellsworth, Amanda-ISU	17	3	0.18
Anderson, Alyssa-SAC	17	3	0.18
Watne, India-UM	19	3	0.16
Gamble, Cierra-NAU	19	3	0.16

GOALS AGAINST AVG	GP	GA	Minutes	GAavg
1. Plese, Caitlin-PSU	18	12	1669:0	0.65
2. Weaver, Lauren-NAU	18	19	1694:5	1.01
3. D'Adamio, Natalie-UNC	19	20	1734:1	1.04
4. Waldman, Ryann-WSU	18	20	1733:2	1.04
5. McMillen, Kendra-UM	15	18	1347:4	1.20
6. Mata, Kimberly-SAC	16	20	1430:5	1.26
7. Hapsic, Sheridan-ISU	16	22	1479:4	1.34
8. Schwery, Nathalie-EWU	18	30	1573:1	1.72
9. Hashimoto, Elyssa-SUU	13	25	1035:1	2.17
10. Hestdalen, Kristi-UND	19	52	1730:0	2.71

SAVES	GP	No.	Avg/G
1. Hestdalen, Kristi-UND	19	131	6.89
2. D'Adamio, Natalie-UNC	19	98	5.16
3. Mata, Kimberly-SAC	16	90	5.62
4. Schwery, Nathalie-EWU	18	87	4.83
5. Hapsic, Sheridan-ISU	16	86	5.38
6. Weaver, Lauren-NAU	18	79	4.39
7. Plese, Caitlin-PSU	18	68	3.78
8. McMillen, Kendra-UM	15	64	4.27
9. Waldman, Ryann-WSU	18	59	3.28
10. Hashimoto, Elyssa-SUU	13	48	3.69

SHUTOOTS	GP	No.	Avg/G
1. Plese, Caitlin-PSU	18	11	0.61
2. Weaver, Lauren-NAU	18	8	0.44
3. Waldman, Ryann-WSU	18	7	0.39
4. Mata, Kimberly-SAC	16	6	0.38
D'Adamio, Natalie-UNC	19	6	0.32
6. Hapsic, Sheridan-ISU	16	5	0.31
7. McMillen, Kendra-UM	15	4	0.27
8. Hashimoto, Elyssa-SUU	13	2	0.15
9. Norman, Kailey-UM	7	1	0.14
Christensen, Tessa-SUU	9	1	0.11
Schwery, Nathalie-EWU	18	1	0.06
MacKay, Danielle-WSU	2	1	0.50

SAVE PERCENTAGE	GP	Saves	GA	Pct.
1. Plese, Caitlin-PSU	18	68	12	.850
2. D'Adamio, Natalie-UNC	19	98	20	.831
3. Mata, Kimberly-SAC	16	90	20	.818
4. Weaver, Lauren-NAU	18	79	19	.806
5. Hapsic, Sheridan-ISU	16	86	22	.796
6. McMillen, Kendra-UM	15	64	18	.780
7. Waldman, Ryann-WSU	18	59	20	.747
8. Schwery, Nathalie-EWU	18	87	30	.744
9. Hestdalen, Kristi-UND	19	131	52	.716
10. Hashimoto, Elyssa-SUU	13	48	25	.658

SAVES PER GAME	GP	No.	Avg/G
1. Hestdalen, Kristi-UND	19	131	6.89
2. Mata, Kimberly-SAC	16	90	5.62
3. Hapsic, Sheridan-ISU	16	86	5.38
4. D'Adamio, Natalie-UNC	19	98	5.16
5. Schwery, Nathalie-EWU	18	87	4.83
6. Weaver, Lauren-NAU	18	79	4.39
7. McMillen, Kendra-UM	15	64	4.27
8. Christensen, Tessa-SUU	9	35	3.89
9. Plese, Caitlin-PSU	18	68	3.78
10. Hashimoto, Elyssa-SUU	13	48	3.69

SHUTOOTS PER GAME	GP	No.	Avg/G
1. Plese, Caitlin-PSU	18	11	0.61
2. Weaver, Lauren-NAU	18	8	0.44
3. Waldman, Ryann-WSU	18	7	0.39
4. Mata, Kimberly-SAC	16	6	0.38
5. D'Adamio, Natalie-UNC	19	6	0.32
6. Hapsic, Sheridan-ISU	16	5	0.31
7. McMillen, Kendra-UM	15	4	0.27
8. Hashimoto, Elyssa-SUU	13	2	0.15
9. Christensen, Tessa-SUU	9	1	0.11
10. Schwery, Nathalie-EWU	18	1	0.06

Team Identification	Team ID
Eastern Washington	EWU
Idaho State	ISU
Montana	UM
North Dakota	UND
Northern Arizona	NAU
Northern Colorado	UNC
Portland State	PSU
Sacramento State	SAC
Southern Utah	SUU
Weber State	WSU

**2013 Big Sky Conference
Conference Team Highs
Through games of Nov 19, 2013 (All games)**

TEAM HIGHS (highest totals made by)

GOALS	7	Portland State vs New Mexico State (Sep 01, 2013)
	4	Southern Utah vs UC Santa Barbara (Aug 28, 2013)
	4	Northern Colorado at Omaha (Aug 30, 2013)
	4	Portland State vs Bakersfield (Sep 07, 2013)
	4	North Dakota vs North Dakota State (Sep 11, 2013)
	4	Sacramento State vs Southern Utah (Oct 13, 2013)
	4	Northern Colorado vs Montana (Oct 13, 2013)
	4	Montana at UC Riverside (Nov 1, 2013)
	ASSISTS	6
	5	Portland State vs New Mexico State (Sep 01, 2013)
SHOTS	31	Eastern Washington at North Dakota (Oct 13, 2013)
	29	Montana at North Dakota (Oct 11, 2013)
POINTS	19	Portland State vs New Mexico State (Sep 01, 2013)
	14	Northern Colorado vs Montana (Oct 13, 2013)
SAVES	16	North Dakota vs Eastern Washington (Oct 13, 2013)
	14	Sacramento State at Pacific (Sep 22, 2013)

**2013 Big Sky Conference
Conference Individual Highs
Through games of Nov 19, 2013 (All games)**

INDIVIDUAL PLAYER GAME HIGHS

POINTS	8	Brown, Eryn (Portland State) vs New Mexico State (Sep 01, 2013)
	6	Trenton, Gabriella (Sacramento State) vs Southern Utah (Oct 13, 2013)
GOALS	3	Brown, Eryn (Portland State) vs New Mexico State (Sep 01, 2013)
	3	Trenton, Gabriella (Sacramento State) vs Southern Utah (Oct 13, 2013)
ASSISTS	3	Muniz, Danny (Northern Arizona) vs UTEP (Sep 20, 2013)
	2	Brown, Eryn (Portland State) vs New Mexico State (Sep 01, 2013)
	2	Trenton, Gabriella (Sacramento State) at Bakersfield (Sep 01, 2013)
	2	Bianchini, Cori (Portland State) vs Bakersfield (Sep 07, 2013)
	2	Akins, Mackenzie (Montana) vs Utah Valley (Sep 09, 2013)
	2	Sutter, Kayla (Eastern Washington) at North Dakota State (Sep 22, 2013)
	2	Bianchini, Cori (Portland State) vs Northern Colorado (Sep 27, 2013)
	2	Lum, Jennifer (Sacramento State) at Montana (Oct 04, 2013)
	2	Rolling, Jordyn (Sacramento State) vs Southern Utah (Oct 13, 2013)
	2	Birdsall, Danielle (Northern Colorado) vs Montana (Oct 13, 2013)
	2	Lancia, Rebecca (Northern Colorado) vs Montana (Oct 13, 2013)
	2	Crompton, Chansi (Weber State) vs Sacramento State (Oct 19, 2013)
	2	Yost, Chandler (Southern Utah) at Eastern Washington (Oct 25, 2013)
SHOTS	8	Akins, Mackenzie (Montana) at Omaha (Sep 13, 2013)
	8	Black, Cassie (Eastern Washington) vs Northern Arizona (Oct 27, 2013)
SAVES	14	Gendron, Hannah (Sacramento State) at Pacific (Sep 22, 2013)
	14	Hestdalen, Kristi (North Dakota) vs Eastern Washington (Oct 13, 2013)

**2013 Big Sky Conference
Conference Opponent Lows
Through games of Nov 19, 2013 (All games)**

OPPONENT LOWS (lowest totals allowed by)

GOALS 0 Northern Arizona at Long Beach State (Aug 23, 2013)
0 Weber State vs Idaho (Aug 23, 2013)
0 Idaho State vs IDAHO (Aug 25, 2013)
0 Montana vs Wyoming (Aug 25, 2013)
0 Northern Arizona at Bakersfield (Aug 30, 2013)
0 Northern Colorado at Omaha (Aug 30, 2013)
0 Portland State vs New Mexico State (Sep 01, 2013)
0 Montana vs Houston Baptist (Sep 05, 2013)
0 Northern Colorado vs Air Force (Sep 06, 2013)
0 Weber State at Boise State (Sep 06, 2013)
0 Portland State vs Bakersfield (Sep 07, 2013)
0 Northern Arizona vs UNLV (Sep 08, 2013)
0 Sacramento State vs San Jose State (Sep 08, 2013)
0 Sacramento State vs Fresno Pacific (Sep 11, 2013)
0 Northern Arizona vs GCU (Sep 13, 2013)
0 Northern Colorado vs New Mexico State (Sep 13, 2013)
0 Portland State at Hawai`i (Sep 15, 2013)
0 Northern Colorado at Wyoming (Sep 18, 2013)
0 Southern Utah vs UC Riverside (Sep 20, 2013)
0 Montana vs Nevada (Sep 20, 2013)
0 Eastern Washington at North Dakota State (Sep 22, 2013)
0 Idaho State at Wyoming (Sep 22, 2013)
0 Portland State vs San Francisco (Sep 22, 2013)
0 Northern Colorado vs Stony Brook (Sep 22, 2013)
0 Weber State at Utah State (Sep 22, 2013)
0 Idaho State vs Eastern Washington (Sep 26, 2013)
0 Weber State vs Montana (Sep 26, 2013)
0 Sacramento State vs North Dakota (Sep 27, 2013)
0 Weber State vs Eastern Washington (Sep 28, 2013)
0 Portland State vs North Dakota (Sep 29, 2013)
0 Northern Colorado at Sacramento State (Sep 29, 2013)
0 Sacramento State vs Northern Colorado (Sep 29, 2013)
0 Sacramento State at Montana (Oct 04, 2013)
0 Portland State at Eastern Washington (Oct 04, 2013)
0 Portland State at Montana (Oct 06, 2013)
0 Idaho State at Southern Utah (Oct 06, 2013)
0 Southern Utah at Portland State (Oct 11, 2013)
0 Portland State vs Southern Utah (Oct 11, 2013)
0 Northern Arizona at Sacramento State (Oct 11, 2013)
0 Montana at North Dakota (Oct 11, 2013)
0 Sacramento State vs Southern Utah (Oct 13, 2013)
0 Northern Colorado vs Montana (Oct 13, 2013)
0 Northern Arizona vs Northern Colorado (Oct 18, 2013)
0 Montana vs Eastern Washington (Oct 18, 2013)
0 Portland State at Idaho State (Oct 19, 2013)
0 Northern Arizona vs North Dakota (Oct 20, 2013)
0 Southern Utah at Eastern Washington (Oct 25, 2013)
0 Portland State at Sacramento State (Oct 25, 2013)
0 Idaho State at North Dakota (Oct 25, 2013)
0 Northern Arizona at Eastern Washington (Oct 27, 2013)
0 Northern Colorado vs Idaho State (Oct 27, 2013)
0 Weber State at North Dakota (Oct 27, 2013)
0 Montana at UC Riverside (Nov 1, 2013)
0 Weber State vs Northern Arizona (Nov 07, 2013)
0 Portland State vs Northern Colorado (Nov 07, 2013)

	0	Portland State vs Weber State (Nov 09, 2013)
	0	Weber State at Portland State (Nov 09, 2013)
SHOTS	2	Weber State vs Idaho (Aug 23, 2013)
	2	Northern Arizona at Bakersfield (Aug 30, 2013)
	2	Sacramento State vs Fresno Pacific (Sep 11, 2013)
	2	Portland State vs North Dakota (Sep 29, 2013)
SAVES	0	Northern Arizona at Long Beach State (Aug 23, 2013)
	0	Southern Utah vs UC Santa Barbara (Aug 28, 2013)
	0	Montana at Loyola Marymount (Aug 30, 2013)
	0	Portland State vs Florida Gulf Coast (Sep 13, 2013)

**2013 Big Sky Conference
CONFERENCE SOCCER STATISTICS**
Through games of Nov 19, 2013 (Conference games only)

Team Miscellaneous	GP	Shots	Fouls	Offside	Corners	PK-PKA	YC-RC
Eastern Washington	9	143	76	4	34	0-0	4-0
Idaho State	9	98	104	6	39	0-0	8-0
Montana	9	158	96	14	53	1-1	4-0
North Dakota	9	60	66	2	9	0-0	4-0
Northern Arizona	9	110	61	18	30	1-1	2-0
Northern Colorado	9	104	75	7	48	3-1	4-1
Portland State	9	128	86	16	38	1-1	5-0
Sacramento State	9	110	63	9	49	0-0	1-0
Southern Utah	9	136	101	12	41	1-1	9-0
Weber State	9	164	69	16	35	1-1	5-1

SHOTS	GP	No.	Avg/G
1. Weber State	9	164	18.22
2. Montana	9	158	17.56
3. Eastern Washington	9	143	15.89
4. Southern Utah	9	136	15.11
5. Portland State	9	128	14.22
6. Northern Arizona	9	110	12.22
Sacramento State	9	110	12.22
8. Northern Colorado	9	104	11.56
9. Idaho State	9	98	10.89
10. North Dakota	9	60	6.67

POINTS	GP	No.	Avg/G
1. Northern Arizona	9	50	5.56
2. Weber State	9	47	5.22
3. Northern Colorado	9	46	5.11
4. Portland State	9	39	4.33
5. Southern Utah	9	32	3.56
Sacramento State	9	32	3.56
7. Idaho State	9	28	3.11
8. Montana	9	23	2.56
9. North Dakota	9	15	1.67
10. Eastern Washington	9	10	1.11

GOALS	GP	No.	Avg/G
1. Weber State	9	17	1.89
Northern Arizona	9	17	1.89
3. Portland State	9	14	1.56
Northern Colorado	9	14	1.56
5. Southern Utah	9	12	1.33
6. Sacramento State	9	11	1.22
7. Idaho State	9	10	1.11
8. Montana	9	9	1.00
9. North Dakota	9	6	0.67
10. Eastern Washington	9	4	0.44

GOALS PER GAME	GP	No.	Avg/G
1. Northern Arizona	9	17	1.89
Weber State	9	17	1.89
3. Northern Colorado	9	14	1.56
Portland State	9	14	1.56
5. Southern Utah	9	12	1.33
6. Sacramento State	9	11	1.22
7. Idaho State	9	10	1.11
8. Montana	9	9	1.00
9. North Dakota	9	6	0.67
10. Eastern Washington	9	4	0.44

ASSISTS	GP	No.	Avg/G
1. Northern Colorado	9	18	2.00
2. Northern Arizona	9	16	1.78
3. Weber State	9	13	1.44
4. Portland State	9	11	1.22
5. Sacramento State	9	10	1.11
6. Southern Utah	9	8	0.89
Idaho State	9	8	0.89
8. Montana	9	5	0.56
9. North Dakota	9	3	0.33
10. Eastern Washington	9	2	0.22

ASSISTS PER GAME	GP	No.	Avg/G
1. Northern Colorado	9	18	2.00
2. Northern Arizona	9	16	1.78
3. Weber State	9	13	1.44
4. Portland State	9	11	1.22
5. Sacramento State	9	10	1.11
6. Idaho State	9	8	0.89
Southern Utah	9	8	0.89
8. Montana	9	5	0.56
9. North Dakota	9	3	0.33
10. Eastern Washington	9	2	0.22

GOALS ALLOWED	GP	No.	Avg/G
1. Portland State	9	3	0.33
2. Northern Arizona	9	8	0.89
Idaho State	9	8	0.89
Northern Colorado	9	8	0.89
5. Weber State	9	9	1.00
6. Sacramento State	9	11	1.22
7. Montana	9	14	1.56
8. Southern Utah	9	17	1.89
9. North Dakota	9	18	2.00
Eastern Washington	9	18	2.00

GOALS AGAINST AVERAGE	GP	GA	Minutes	GA Avg.
1. Portland State	9	3	836:50	0.32
2. Northern Colorado	9	8	857:36	0.84
3. Idaho State	9	8	850:00	0.85
4. Northern Arizona	9	8	837:00	0.86
5. Weber State	9	9	850:00	0.95
6. Sacramento State	9	11	836:22	1.18
7. Montana	9	14	830:00	1.52
8. Southern Utah	9	17	853:24	1.79
9. Eastern Washington	9	18	816:22	1.98
10. North Dakota	9	18	810:00	2.00

**2013 Big Sky Conference
CONFERENCE SOCCER STATISTICS
Through games of Nov 19, 2013 (Conference games only)**

SAVES	GP	No.	Avg/G
1. North Dakota	9	64	7.11
2. Sacramento State	9	51	5.67
3. Eastern Washington	9	47	5.22
4. Northern Arizona	9	44	4.89
5. Idaho State	9	42	4.67
6. Northern Colorado	9	41	4.56
7. Montana	9	35	3.89
8. Southern Utah	9	33	3.67
9. Weber State	9	31	3.44
10. Portland State	9	25	2.78

SHUTOUTS	GP	No.	Avg/G
1. Portland State	9	6	0.67
2. Sacramento State	9	4	0.44
Northern Arizona	9	4	0.44
4. Idaho State	9	3	0.33
Weber State	9	3	0.33
Northern Colorado	9	3	0.33
7. Southern Utah	9	2	0.22
Montana	9	2	0.22
9. North Dakota	9	0	0.00
Eastern Washington	9	0	0.00

FOULS	GP	No.	Avg/G
1. Idaho State	9	104	11.56
2. Southern Utah	9	101	11.22
3. Montana	9	96	10.67
4. Portland State	9	86	9.56
5. Eastern Washington	9	76	8.44
6. Northern Colorado	9	75	8.33
7. Weber State	9	69	7.67
8. North Dakota	9	66	7.33
9. Sacramento State	9	63	7.00
10. Northern Arizona	9	61	6.78

CORNERS	GP	No.	Avg/G
1. Montana	9	53	5.89
2. Sacramento State	9	49	5.44
3. Northern Colorado	9	48	5.33
4. Southern Utah	9	41	4.56
5. Idaho State	9	39	4.33
6. Portland State	9	38	4.22
7. Weber State	9	35	3.89
8. Eastern Washington	9	34	3.78
9. Northern Arizona	9	30	3.33
10. North Dakota	9	9	1.00

OFFSIDES	GP	No.	Avg/G
1. Northern Arizona	9	18	2.00
2. Portland State	9	16	1.78
Weber State	9	16	1.78
4. Montana	9	14	1.56
5. Southern Utah	9	12	1.33
6. Sacramento State	9	9	1.00
7. Northern Colorado	9	7	0.78
8. Idaho State	9	6	0.67
9. Eastern Washington	9	4	0.44
10. North Dakota	9	2	0.22

YELLOW CARDS	GP	No.	Avg/G
1. Southern Utah	9	9	1.00
2. Idaho State	9	8	0.89
3. Weber State	9	5	0.56
Portland State	9	5	0.56
5. Northern Colorado	9	4	0.44
Eastern Washington	9	4	0.44
Montana	9	4	0.44
North Dakota	9	4	0.44
9. Northern Arizona	9	2	0.22
10. Sacramento State	9	1	0.11

**2013 Big Sky Conference
CONFERENCE SOCCER STATISTICS
Through games of Nov 19, 2013 (Conference games only)**

Team	Conference	Pct.	GF	GA	Overall	Pct.	GF	GA	Current unbeaten streak
Portland State	8-0-1	.944	14	3	8-0-1	.944	14	3	Portland State -- 8-0-1
Northern Arizona	7-2-0	.778	17	8	7-2-0	.778	17	8	Northern Arizona -- 4-0-0
Weber State	5-2-2	.667	17	9	5-2-2	.667	17	9	Northern Colorado -- 2-0-1
Northern Colorado	5-2-2	.667	14	8	5-2-2	.667	14	8	Weber State -- 2-0-1
Idaho State	4-3-2	.556	10	8	4-3-2	.556	10	8	Montana -- 1-0-0
Southern Utah	3-5-1	.389	12	17	3-5-1	.389	12	17	
Sacramento State	3-5-1	.389	11	11	3-5-1	.389	11	11	
Montana	3-5-1	.389	9	14	3-5-1	.389	9	14	
North Dakota	1-8-0	.111	6	18	1-8-0	.111	6	18	
Eastern Washington	1-8-0	.111	4	18	1-8-0	.111	4	18	

Team	Miscellaneous	GP	GF-GA	Score Avg.	Margin	PK-Att	Shots	Saves	Save%	Corners
Eastern Washington		9	4-18	0.44-2.00	-1.56	0-0	143	47	72.3	34
Idaho State		9	10-8	1.11-0.89	+0.22	0-0	98	42	84.0	39
Montana		9	9-14	1.00-1.56	-0.56	1-1	158	35	71.4	53
North Dakota		9	6-18	0.67-2.00	-1.33	0-0	60	64	78.0	9
Northern Arizona		9	17-8	1.89-0.89	+1.00	1-1	110	44	84.6	30
Northern Colorado		9	14-8	1.56-0.89	+0.67	1-3	104	41	83.7	48
Portland State		9	14-3	1.56-0.33	+1.22	1-1	128	25	89.3	38
Sacramento State		9	11-11	1.22-1.22	+0.00	0-0	110	51	82.3	49
Southern Utah		9	12-17	1.33-1.89	-0.56	1-1	136	33	66.0	41
Weber State		9	17-9	1.89-1.00	+0.89	1-1	164	31	77.5	35

Attendance	Home	Average	Away	Average	Neutral	Average	Total	Average
Eastern Washington	4-738	184	5-1464	293	0-0	0	9-2202	245
Idaho State	5-1982	396	4-1041	260	0-0	0	9-3023	336
Montana	5-1337	267	4-938	234	0-0	0	9-2275	253
North Dakota	5-548	110	4-802	200	0-0	0	9-1350	150
Northern Arizona	4-1722	430	5-1259	252	0-0	0	9-2981	331
Northern Colorado	4-1058	264	5-901	180	0-0	0	9-1959	218
Portland State	4-576	144	5-1541	308	0-0	0	9-2117	235
Sacramento State	5-1344	269	4-1261	315	0-0	0	9-2605	289
Southern Utah	5-737	147	4-792	198	0-0	0	9-1529	170
Weber State	4-1350	338	5-1393	279	0-0	0	9-2743	305
Totals	45-11392	253	45-11392	253	0-0	0	90-22784	253

**2013 Big Sky Conference
INDIVIDUAL SOCCER STATISTICS
Through games of Nov 19, 2013 (Conference games only)**

To be ranked, a player must appear in at least 50.0% of their team's games, goalies at least 33.0% of their team's minutes.

SHOTS	GP	No.	Avg/G
1. Black, Cassie-EWU	9	35	3.89
2. Harrison, Mackenzie-WSU	9	31	3.44
3. Watne, India-UM	9	27	3.00
4. Anderson, Alyssa-SAC	9	24	2.67
Frey, Maddey-UM	9	24	2.67
6. Brown, Eryn-PSU	9	23	2.56
7. Akins, Mackenzie-UM	9	22	2.44
8. Lum, Jennifer-SAC	9	21	2.33
9. Ellsworth, Amanda-ISU	9	20	2.22
Crompton, Chansi-WSU	9	20	2.22
Hernandez, Sabrina-SUU	9	20	2.22

SHOTS PER GAME	GP	No.	Avg/G
1. Black, Cassie-EWU	9	35	3.89
2. Harrison, Mackenzie-WSU	9	31	3.44
3. Watne, India-UM	9	27	3.00
4. Anderson, Alyssa-SAC	9	24	2.67
Frey, Maddey-UM	9	24	2.67
6. Brown, Eryn-PSU	9	23	2.56
7. Akins, Mackenzie-UM	9	22	2.44
8. Lum, Jennifer-SAC	9	21	2.33
9. Cashman, Katie-EWU	7	16	2.29
10. Wingender, Haley-NAU	8	18	2.25

POINTS	GP	G	A	Pts	Avg/G
1. Harrison, Mackenzie-WSU	9	6	1	13	1.44
Gamble, Cierra-NAU	9	4	5	13	1.44
3. Rolling, Jordyn-SAC	9	4	2	10	1.11
4. Crompton, Chansi-WSU	9	2	5	9	1.00
5. Wingender, Haley-NAU	8	3	2	8	1.00
Ellsworth, Amanda-ISU	9	4	0	8	0.89
Bianchini, Cori-PSU	9	3	2	8	0.89
Cooley, Ariana-PSU	9	3	2	8	0.89
Trenton, Gabriella-SAC	9	4	0	8	0.89
Grover, Juliana-UNC	9	3	2	8	0.89

POINTS PER GAME	GP	G	A	Pts	Avg/G
1. Gamble, Cierra-NAU	9	4	5	13	1.44
Harrison, Mackenzie-WSU	9	6	1	13	1.44
3. Rolling, Jordyn-SAC	9	4	2	10	1.11
4. Crompton, Chansi-WSU	9	2	5	9	1.00
Wingender, Haley-NAU	8	3	2	8	1.00
6. Cooley, Ariana-PSU	9	3	2	8	0.89
Bianchini, Cori-PSU	9	3	2	8	0.89
Ellsworth, Amanda-ISU	9	4	0	8	0.89
Grover, Juliana-UNC	9	3	2	8	0.89
Trenton, Gabriella-SAC	9	4	0	8	0.89

GOALS	GP	No.	Avg/G
1. Harrison, Mackenzie-WSU	9	6	0.67
2. Rolling, Jordyn-SAC	9	4	0.44
Ellsworth, Amanda-ISU	9	4	0.44
Trenton, Gabriella-SAC	9	4	0.44
Gamble, Cierra-NAU	9	4	0.44
6. Wingender, Haley-NAU	8	3	0.38
Frey, Maddey-UM	9	3	0.33
Bianchini, Cori-PSU	9	3	0.33
Day, Mackenzie-WSU	9	3	0.33
Peterson, Whitney-ISU	9	3	0.33
Ortiz-Lanier, Essence-UNC	9	3	0.33
Grover, Juliana-UNC	9	3	0.33
Cooley, Ariana-PSU	9	3	0.33
Sherwin, Nicole-NAU	9	3	0.33
Brich, Nacny-SUU	9	3	0.33

GOALS PER GAME	GP	No.	Avg/G
1. Harrison, Mackenzie-WSU	9	6	0.67
2. Rolling, Jordyn-SAC	9	4	0.44
Trenton, Gabriella-SAC	9	4	0.44
Gamble, Cierra-NAU	9	4	0.44
Ellsworth, Amanda-ISU	9	4	0.44
6. Wingender, Haley-NAU	8	3	0.38
7. Frey, Maddey-UM	9	3	0.33
Bianchini, Cori-PSU	9	3	0.33
Day, Mackenzie-WSU	9	3	0.33
Peterson, Whitney-ISU	9	3	0.33
Ortiz-Lanier, Essence-UNC	9	3	0.33
Grover, Juliana-UNC	9	3	0.33
Cooley, Ariana-PSU	9	3	0.33
Sherwin, Nicole-NAU	9	3	0.33
Brich, Nacny-SUU	9	3	0.33

**2013 Big Sky Conference
INDIVIDUAL SOCCER STATISTICS
Through games of Nov 19, 2013 (Conference games only)**

ASSISTS	GP	No.	Avg/G
1. Gamble, Cierra-NAU	9	5	0.56
Crompton, Chansi-WSU	9	5	0.56
3. Bellin, Ambree-UNC	9	4	0.44
4. Lum, Jennifer-SAC	9	3	0.33
Lancia, Rebecca-UNC	9	3	0.33
6. Berry, Savannah-NAU	7	2	0.29
Godfrey, Kiley-ISU	7	2	0.29
Wingender, Haley-NAU	8	2	0.25
Petersen, Shaylee-WSU	8	2	0.25
Grover, Juliana-UNC	9	2	0.22
Watne, India-UM	9	2	0.22
Morris, Paige-UNC	9	2	0.22
Simon, Allie-UM	9	2	0.22
Cooley, Ariana-PSU	9	2	0.22
Brown, Eryn-PSU	9	2	0.22
Birdsall, Danielle-UNC	9	2	0.22
Bergquist, Abbey-PSU	9	2	0.22
Bianchini, Cori-PSU	9	2	0.22
Cella, Ashley-SAC	9	2	0.22
Rolling, Jordyn-SAC	9	2	0.22
Yost, Chandler-SUU	9	2	0.22
Gaines, Lynsey-PSU	9	2	0.22

ASSISTS PER GAME	GP	No.	Avg/G
1. Gamble, Cierra-NAU	9	5	0.56
Crompton, Chansi-WSU	9	5	0.56
3. Bellin, Ambree-UNC	9	4	0.44
4. Lancia, Rebecca-UNC	9	3	0.33
Lum, Jennifer-SAC	9	3	0.33
6. Godfrey, Kiley-ISU	7	2	0.29
Berry, Savannah-NAU	7	2	0.29
8. Petersen, Shaylee-WSU	8	2	0.25
Wingender, Haley-NAU	8	2	0.25
10. Watne, India-UM	9	2	0.22
Grover, Juliana-UNC	9	2	0.22
Simon, Allie-UM	9	2	0.22
Morris, Paige-UNC	9	2	0.22
Birdsall, Danielle-UNC	9	2	0.22
Brown, Eryn-PSU	9	2	0.22
Cooley, Ariana-PSU	9	2	0.22
Gaines, Lynsey-PSU	9	2	0.22
Yost, Chandler-SUU	9	2	0.22
Rolling, Jordyn-SAC	9	2	0.22
Cella, Ashley-SAC	9	2	0.22
Bianchini, Cori-PSU	9	2	0.22
Bergquist, Abbey-PSU	9	2	0.22

GAME-WINNING GOALS	GP	No.	Avg/G
1. Bianchini, Cori-PSU	9	3	0.33
Harrison, Mackenzie-WSU	9	3	0.33
3. Ellsworth, Amanda-ISU	9	2	0.22
Sherwin, Nicole-NAU	9	2	0.22
Gamble, Cierra-NAU	9	2	0.22

GOALS AGAINST AVG	GP	GA	Minutes	GAavg
1. Plese, Caitlin-PSU	9	3	836:50	0.32
2. D'Adamio, Natalie-UNC	8	5	697:33	0.65
3. Waldman, Ryann-WSU	8	7	760:00	0.83
4. Hapsic, Sheridan-ISU	9	8	850:00	0.85
5. Weaver, Lauren-NAU	9	8	837:00	0.86
6. Mata, Kimberly-SAC	9	11	836:22	1.18
7. McMillen, Kendra-UM	5	7	423:42	1.49
8. Norman, Kailey-UM	6	7	406:18	1.55
9. Christensen, Tessa-SUU	6	9	458:10	1.77
10. Hashimoto, Elyssa-SUU	5	8	395:14	1.82

SAVE PERCENTAGE	GP	Saves	GA	Pct.
1. Plese, Caitlin-PSU	9	25	3	.893
2. D'Adamio, Natalie-UNC	8	37	5	.881
3. Weaver, Lauren-NAU	9	44	8	.846
4. Hapsic, Sheridan-ISU	9	42	8	.840
5. Mata, Kimberly-SAC	9	51	11	.823
6. Waldman, Ryann-WSU	8	27	7	.794
7. Hestdalen, Kristi-UND	9	62	18	.775
8. McMillen, Kendra-UM	5	22	7	.759
9. Schwery, Nathalie-EWU	9	42	15	.737
10. Christensen, Tessa-SUU	6	17	9	.654

SAVES	GP	No.	Avg/G
1. Hestdalen, Kristi-UND	9	62	6.89
2. Mata, Kimberly-SAC	9	51	5.67
3. Weaver, Lauren-NAU	9	44	4.89
4. Schwery, Nathalie-EWU	9	42	4.67
Hapsic, Sheridan-ISU	9	42	4.67
6. D'Adamio, Natalie-UNC	8	37	4.62
7. Waldman, Ryann-WSU	8	27	3.38
8. Plese, Caitlin-PSU	9	25	2.78
9. McMillen, Kendra-UM	5	22	4.40
10. Christensen, Tessa-SUU	6	17	2.83

SAVES PER GAME	GP	No.	Avg/G
1. Hestdalen, Kristi-UND	9	62	6.89
2. Mata, Kimberly-SAC	9	51	5.67
3. Weaver, Lauren-NAU	9	44	4.89
4. Hapsic, Sheridan-ISU	9	42	4.67
Schwery, Nathalie-EWU	9	42	4.67
6. D'Adamio, Natalie-UNC	8	37	4.62
7. McMillen, Kendra-UM	5	22	4.40
8. Waldman, Ryann-WSU	8	27	3.38
9. Hashimoto, Elyssa-SUU	5	15	3.00
10. Christensen, Tessa-SUU	6	17	2.83

**2013 Big Sky Conference
INDIVIDUAL SOCCER STATISTICS
Through games of Nov 19, 2013 (Conference games only)**

SHUTOUS	GP	No.	Avg/G
1. Plese, Caitlin-PSU	9	6	0.67
2. Weaver, Lauren-NAU	9	4	0.44
Mata, Kimberly-SAC	9	4	0.44
4. Waldman, Ryann-WSU	8	3	0.38
Hapsic, Sheridan-ISU	9	3	0.33
6. D'Adamio, Natalie-UNC	8	2	0.25
7. Hashimoto, Elyssa-SUU	5	1	0.20
Christensen, Tessa-SUU	6	1	0.17
McMillen, Kendra-UM	5	1	0.20
Norman, Kailey-UM	6	1	0.17

SHUTOUS PER GAME	GP	No.	Avg/G
1. Plese, Caitlin-PSU	9	6	0.67
2. Mata, Kimberly-SAC	9	4	0.44
Weaver, Lauren-NAU	9	4	0.44
4. Waldman, Ryann-WSU	8	3	0.38
5. Hapsic, Sheridan-ISU	9	3	0.33
6. D'Adamio, Natalie-UNC	8	2	0.25
7. McMillen, Kendra-UM	5	1	0.20
Hashimoto, Elyssa-SUU	5	1	0.20
9. Christensen, Tessa-SUU	6	1	0.17
Norman, Kailey-UM	6	1	0.17

Team Identification	Team ID
Eastern Washington	EWU
Idaho State	ISU
Montana	UM
North Dakota	UND
Northern Arizona	NAU
Northern Colorado	UNC
Portland State	PSU
Sacramento State	SAC
Southern Utah	SUU
Weber State	WSU