



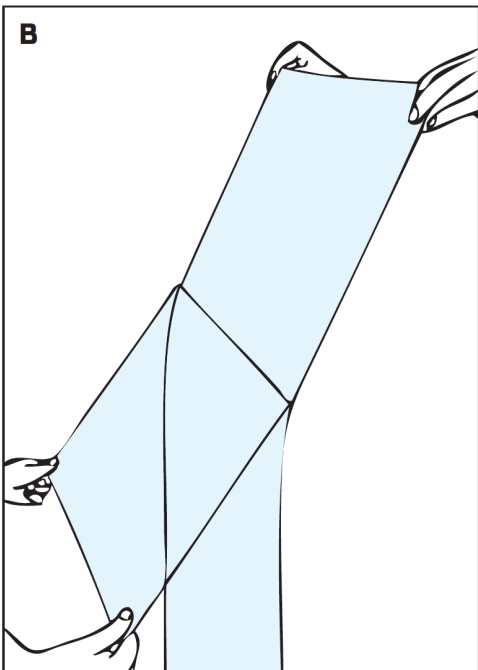
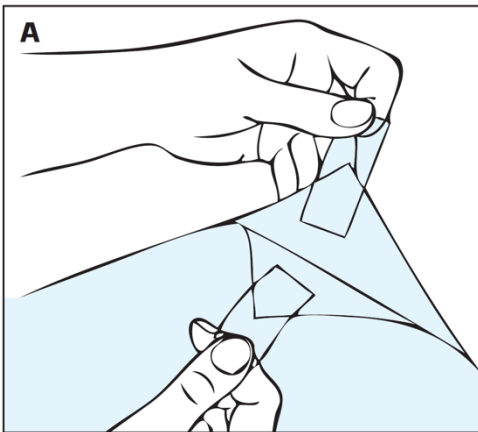
Black Diamond Film Application Instructions

Screen Innovations recommends installation by a professional window film installer.

Black Diamond Film is intended to be installed on the projector side of the glass/acrylic. Recommended minimum projector throw is 1.2 times screen width. Blending is not recommended on Black Diamond Film!

Diagram A–G

- Release Liner Removal
- Film Application
- Film Trimming
- Final Squeegee



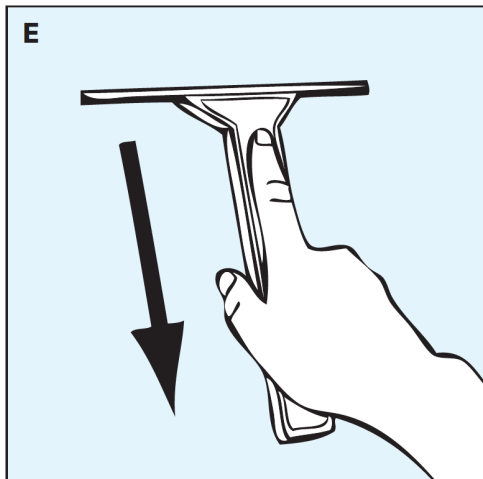
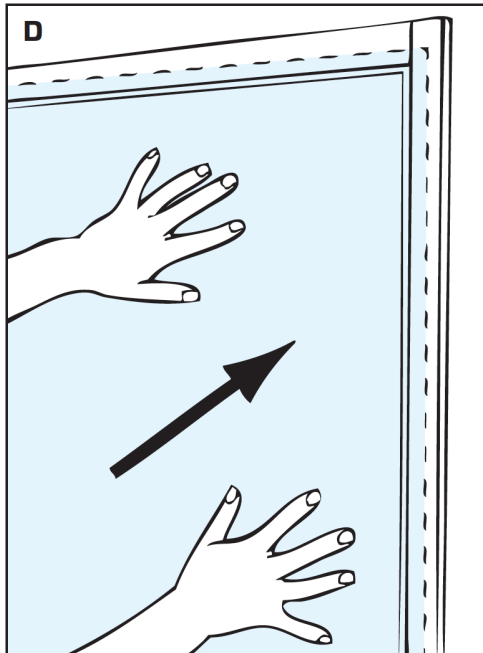
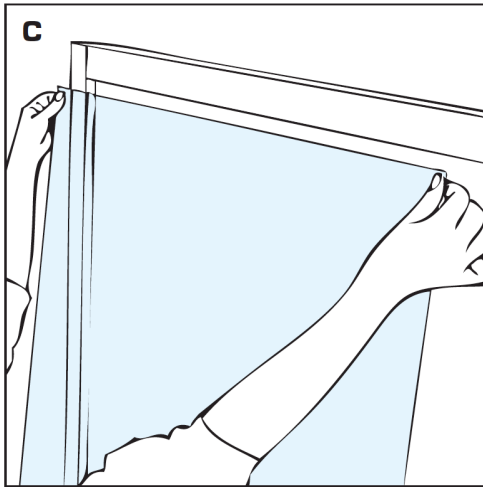
EQUIPMENT

- The following parts are available in kit form from Decorativefilm.com part (sx-002)
- Application solution (in spray container, properly mixed)
- Squeegee
- Edge guide tool
- Trimming knife
- Pressure sensitive tape
- Razor scraper
- Paper towel (a lint free towel is best)
- Standard 32-oz spray bottle full of warm distilled water mixed with 3 drops of dish soap

COMPLETELY CLEAN WINDOW

1. Place absorbent cloth on floor under the windows to collect excessive window solution.
2. Wash window with solution and squeegee.
3. Wet window with solution and scrape entire surface with razor scraper to remove any dirt particles.
4. Wash and squeegee again.
5. Wipe edges carefully with paper towel.
6. Make sure that all loose dirt is removed.

Cleaning the window completely and thoroughly is the single most important step.



FILM PREPERATION

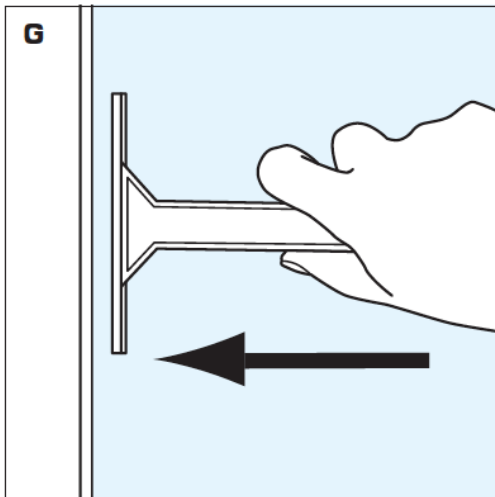
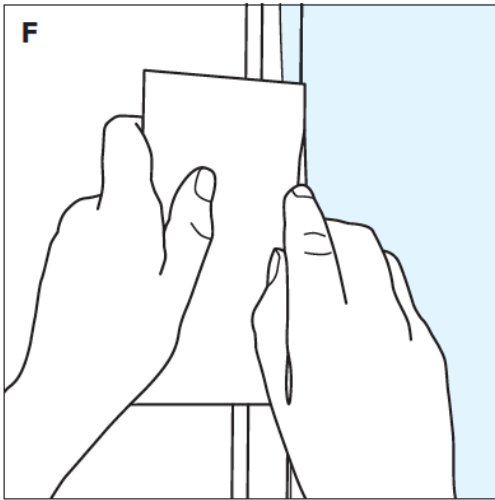
1. Take the film out of the box. Remove end plugs and protective plastic sleeve.
2. Save packaging to protect balance of film when job is completed. Replace end plates and place the roll back in the box. Set the box in front of window so that release liner, which protects the adhesive, faces installer. The film can then be unrolled directly from the box.
3. Measure window glass from inside the frame.
4. Film width should be pre-cut at least 3/8" wider than window.
5. Soak window thoroughly with solution.
6. Overlap the film at the top and bottom of the window by approximately 1" and cut.
7. Have assistant hold cut film, or place film against solution soaked window
8. with release liner facing the installer. The solution on a window will hold film in place.

RELEASE LINER REMOVAL

The film is coated with pressure sensitive adhesive which must be kept clean. The adhesive is protected with a release liner and during application the release liner must be removed. Protect the film and exposed adhesive during the entire installation procedure. Do not let it touch anything but the glass on which it is to be installed.

1. Apply pressure sensitive tape on one side of an upper corner of the film. Place a second piece of tape on same corner on the reverse side of film (see diagram A). Be careful not to let exposed tacky surfaces of the tape touch each other.
2. Holding one piece of tape in each hand, pull the pieces of tape apart to separate the release liner from film
3. As you pull the liner off the film, begin to spray the adhesive surface with solution, completely soaking exposed adhesive. Continue pulling down on clear release sheet while spraying solution on adhesive. Solution will neutralize adhesive, preventing it from sticking to anything. Once initial removal of liner begins, try to pull it down evenly across the film (see diagram B). Discard release liner.
4. With adhesive surface completely exposed, spray one final time with solution to ensure that 100 percent of adhesive is wet

Please be aware that Black Diamond Film can be scratched if a hard squeegee is used!



FILM APPLICATION

1. Hold film at uppermost corners being careful not to allow film to touch floor or any other surface, place film on window with adhesive side against glass (see diagram C).
2. The application solution acts as a lubricant making the window surface slippery. You can now slide the film so that one edge of film is 1/16" from one side of window (see diagram D). Lift film if necessary to remove large wrinkles or bubbles. (For ease of installation the edge you select should be the one you favor, i.e. right side for right-handed people, left side for left-handed people. If fitted correctly this edge will not have to be trimmed. Other edges of the film should overlap top, bottom, and opposite edge of window.)
3. Spray the surface side of the film facing you with solution. This acts as a lubricant for the squeegee.
4. Beginning at the center of window, squeegee once to right side of window (see diagram E). Going back to the center, squeegee across to left hand edge of the window, then squeegee the window in straight, smooth strokes working from center out to the edges of the window until all excess application solution has been squeegeed out from under the film and film is lying flat. Note: the squeegee will not float across a dry surface, so re-lubricate with application solution as needed.

FILM TRIMMING

1. Butt the edge guide tool against window frame, perpendicular to glass (see diagram F).
2. With trimming knife and new sharp blade, trim excess film using edge guide tool to provide a narrow straight line border. Trim the bottom and side before top, so that trimmed film will not get in your way.
3. Start trimming operation from corner but do not finish cutting into corner
4. Remove and discard all film scraps

FINAL SQUEEGEE

Once film is completely trimmed, spray the surface once more with application solution. Repeat squeegee operation as described in Step 4-d (see diagram G). Finally, using a wad of paper towels, gently wipe around edges of film to completely remove all excess water. This prevents the application solution from re-entering between the glass and film.

CLEANING & MAINTENANCE

The film can be cleaned periodically using a soap and water solution. We recommend wetting a soft cloth with solution and then cleaning the window rather than directly spraying solution on the surface. Never use harsh chemicals or cleaning agents such as Windex to clean the film