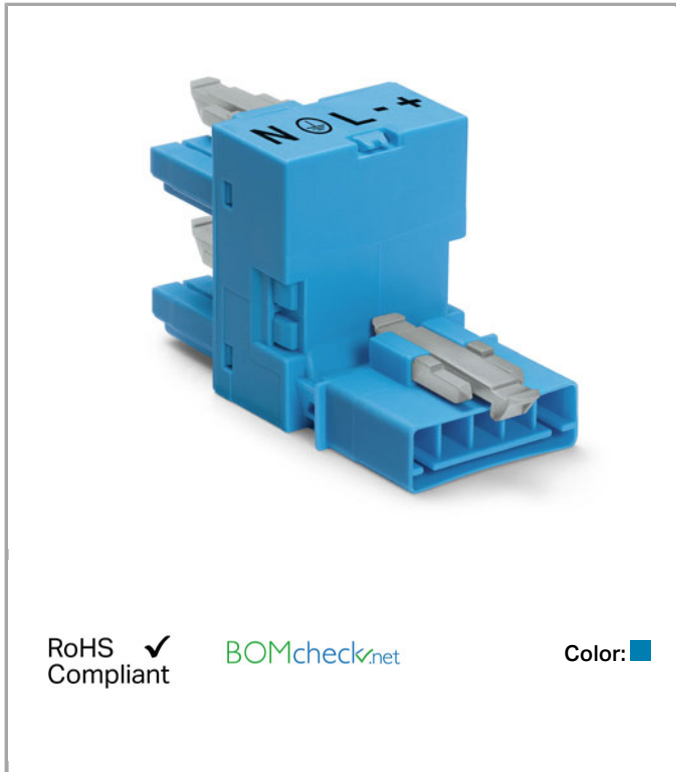


Data sheet | Item number: 890-983

h-distribution connector; 5-pole; Cod. I; 1 input; 2 outputs; outputs on one side; 3 locking levers; for flying leads; blue



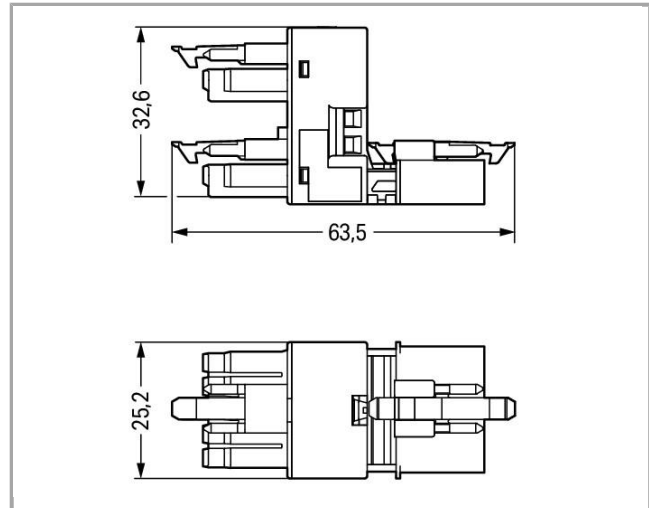
890-983



RoHS
Compliant

BOMcheck.net

Color: ■



Item description

- Protected against mismatching and maintenance-free
- Compact design with 4.4 mm pole spacing

Note:

All connectors for mounted installations (snap-in versions for lighting fixtures or devices, all types of PCB and distribution connectors) are factory-equipped with locking levers to ensure plugs and sockets are securely locked. Additional locking levers are only required for flying leads (plug /socket).

Safety information 1:

Application note for the U.S. market (USR): Some versions may also be used for current interruption in accordance with the UL certificate in select applications with currents below 5 A and voltages up to 600 V. For further information, please contact your local sales office.

Data

Electrical data

Note on Contact Resistance

approx. 1mΩ contact resistance approx. 0.25mΩ contact transition
plug/socket

Ratings per IEC/EN 60664-1

Rated voltage (III / 3)	400 V
Rated impulse voltage (III / 3)	6 kV
Rated current	16 A

Approvals per UL 1977

Rated voltage per UL 1977 (factory wiring only)	600 V
Rated current per UL 1977 (factory wiring only)	12 A

Connection data

Total number of potentials	5
Ground function	with preceding GND contact
No. of poles	5

Geometrical Data

Pin spacing	4.4 mm / 0.173 inch
Width	25.2 mm / 0.992 inch
Height	32.65 mm / 1.285 inch
Depth	57.85 mm / 2.278 inch

Mechanical data

Coding	I
Mating force of a plug-in connection	ca. 20 – 70 N (polzahlabhängig)
Retention force of a plug-in connection	When locked: > 80 N
Unmating force of a plug-in connection	ohne Verriegelung: ca. 20 – 70 N (polzahlabhängig)
Number of mating cycles	

200, without resistive load

100, with resistive load $I_N = 16A$, tested (1.5mm²/AWG 16)

Type of distribution connector	h-distribution connector, unidirectional
Marking	N L - +
Protection class	IP20
Note on protection class	Only in mated condition (These compact connectors are not designed for use in open, easily accessible areas.)
Potential marking	N L - +

Plug connection

Contact type (pluggable connector)	Socket/plug
Mismating protection	Yes
Locking of plug-in connection	locking lever
Locking lever	yes

Material Data

Color	blue
Insulating material	Polyamide 66 (PA 66)
Flammability class per UL94	V0
Contact material	Copper or copper alloy, surface-treated
Fire load	0.367 MJ
Weight	23.303 g

Environmental Requirements


Processing temperature	-5 +40 °C
Continuous operating temperature	-35 +85 °C
Note on Continuous Service Temperature	Insulating parts for temperatures ≤ 105 °C

Commercial data

Product Group	20 (WINSTA)
Country of origin	DE
GTIN	4050821300335
Customs Tariff No.	85366990990

Approvals / Certificates

Country specific Approvals

Logo	Approval	Additional Approval Text	Certificate name
	CCA DEKRA Certification B.V.	EN 61535	71- 102984
	CCA DEKRA Certification B.V.	IEC 61535	NL-49482

Ship Approvals

Logo	Approval	Additional Approval Text	Certificate name
	ABS American Bureau of Shipping	Steel Vessel Rules	14- HG1241513-





PDA



DNV GL	-	TAE00001Z6
Det Norske Veritas, Germanischer Lloyd		

Compatible products

assembling

	Item no.: 890-625 Mounting plate; 5-pole; for distribution connectors; Plastic; black	890-625
	Item no.: 890-675 Mounting plate; 5-pole; for distribution connectors; Plastic; white	890-675

Downloads
Documentation

Bid Text

890-983	Apr 4, 2012	doc	Download
WINSTA MINI 5-polig		23.0 kB	

CAD/CAE - Smart Data

CAD data

3D Download 890-983	URL	Download
---------------------	-----	----------

WSCAD

WSCAD Universe	Download
----------------	----------

Subject to changes.