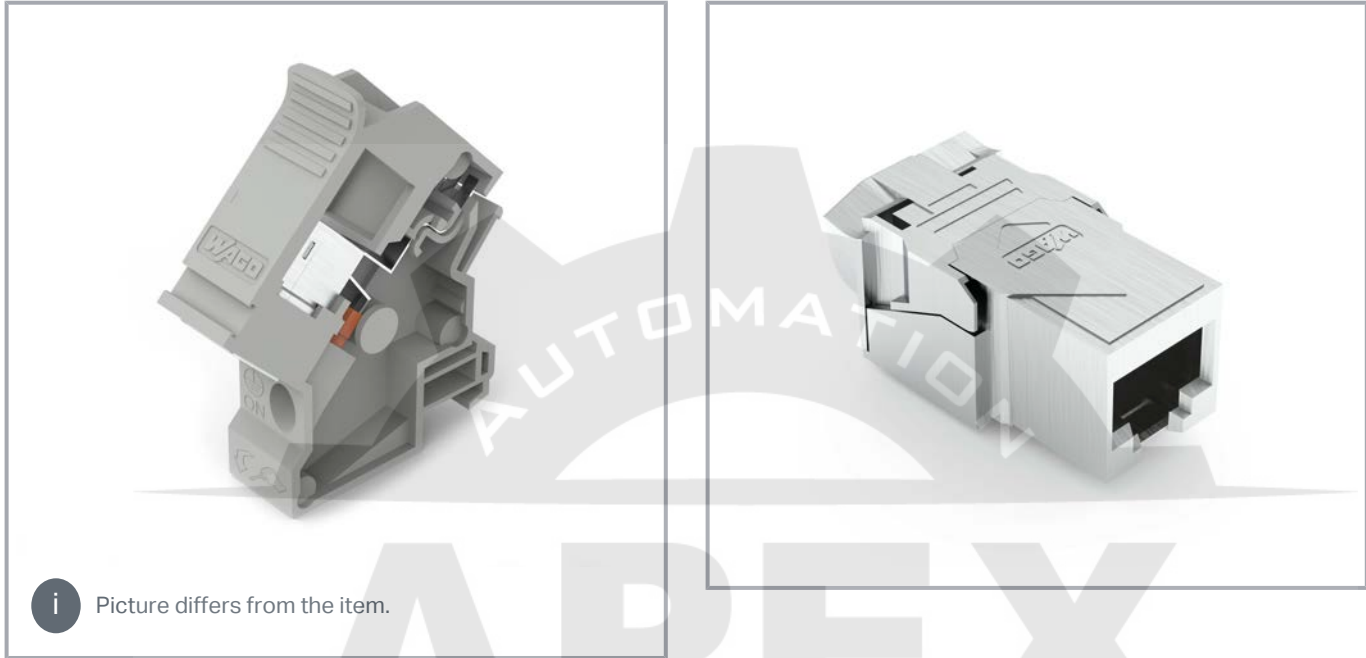


Data sheet | Item number: 289-197

Interface module; RJ-45; IDC technology; Cat. 6A; in mounting carrier; with shield connection

www.wago.com/289-197



 Picture differs from the item.

Data

Electrical data

Contact resistance (max.)	5 mΩ
Specialty functions	with shield connection

Safety and protection

Protection type	IP20
-----------------	------

Connection data

Pole No.	8
Connection type (1)	System
Pole number 1	8
Pluggable connectors	RJ-45 (shielded)
Connection type 2	System
Pole number 2	8

Subject to changes. Please also observe the further product documentation!

WAGO Corporation
Germantown, WI 53022
Phone: 1-800-DIN-RAIL (346-7245) | Fax: (262) 255-6222
Email: info.us@wago.com | Web: www.wago.us

Do you have any questions about our products?
We are always happy to take your call at (262) 255-6222 or 1 800-DIN-RAIL.



Connection technology 2	IDC
Solid conductor 2	0.4 ... 0.65 mm ² / 26 ... 22 AWG
Stranded conductor 2	0.4 ... 0.65 mm ² / 26/7 ... 22/7 AWG
Strip length 2	4.5 ... 9.6 mm / 0.18 ... 0.38 inch
Mating cycles	750
Connection cable	Cat. 6A (min.)

Physical data

Width	18 mm / 0.709 inch
Height from upper-edge of DIN-rail	59 mm / 2.323 inch
Depth	90 mm / 3.543 inch

Mechanical data

Mounting type	DIN-35 rail
---------------	-------------

Material data

Contact plating (connector)	Au over Ni
Contact material (connector)	CuSn
Material (plug-in module)	Zinc die-cast
Material (carrier rail adapter)	PC-GF10
Weight	39 g

Environmental requirements

Surrounding air temperature (operation)	-10 ... 60 °C
Surrounding air temperature (storage)	-40 ... 70 °C
Relative humidity	95% (non-condensing)

Commercial data

Packaging type	bag
Country of origin	PL
GTIN	4055144029895
Customs tariff number	8536904000

Downloads

Documentation

Bid Text

Subject to changes. Please also observe the further product documentation!

WAGO Corporation
 Germantown, WI 53022
 Phone: 1-800-DIN-RAIL (346-7245) | Fax: (262) 255-6222
 Email: info.us@wago.com | Web: www.wago.us

Do you have any questions about our products?
 We are always happy to take your call at (262) 255-6222 or 1 800-DIN-RAIL.



xml 4.1 kB	Download
---------------	----------

docx 15.3 kB	Download
-----------------	----------

Environmental Product Compliance

Compliance Search

Environmental Product Compliance 289-197

URL	Download
-----	----------

Interface module; RJ-45; IDC technology; Cat. 6A; in mounting carrier; with shield connection

Installation Notes



Subject to changes. Please also observe the further product documentation!

WAGO Corporation
Germantown, WI 53022
Phone: 1-800-DIN-RAIL (346-7245) | Fax: (262) 255-6222
Email: info.us@wago.com | Web: www.wago.us

Do you have any questions about our products?
We are always happy to take your call at (262) 255-6222 or 1 800-DIN-RAIL.