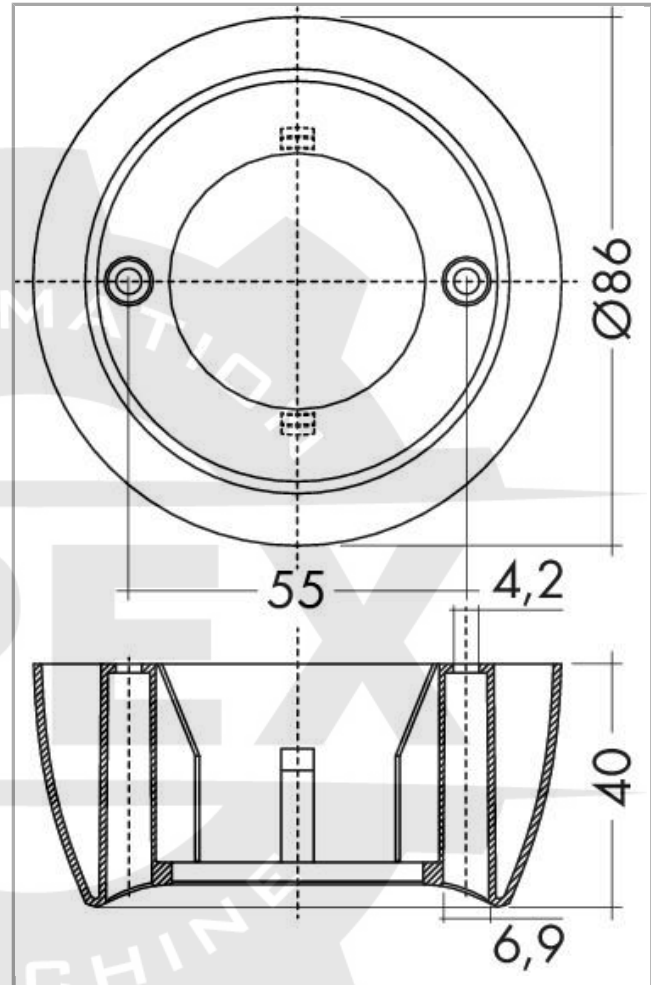
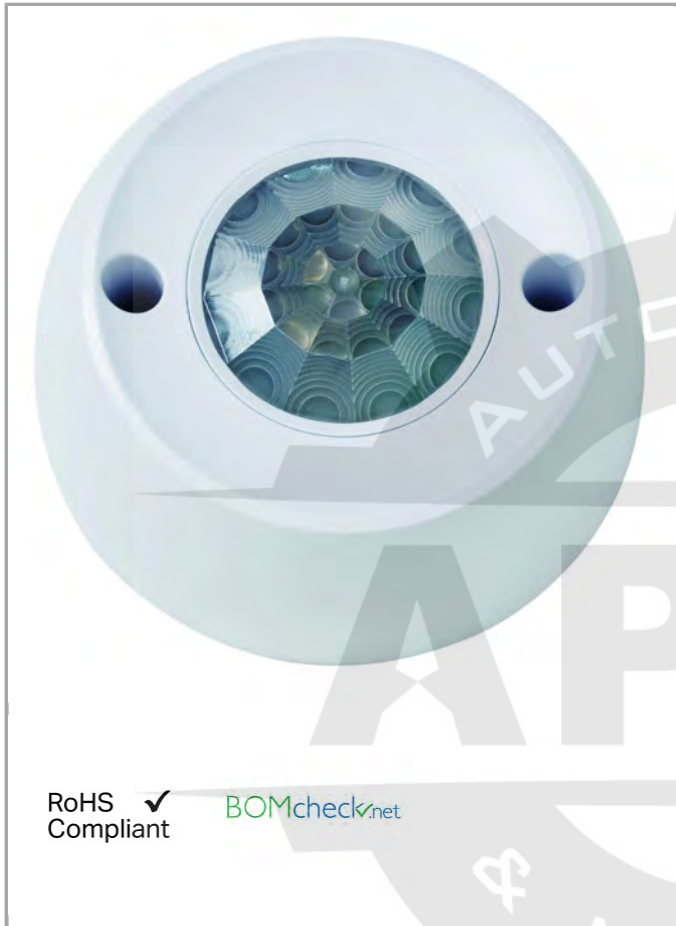


2851-8303



### Item description

The WAGO DALI MSensor 02 is used with WAGO DALI Modules (753-647 DALI Multi-Master Module or 750-641 DALI/DSI Module).

It has been designed for the following principal applications:

- Individual offices
- Open-plan offices
- Training/presentation rooms
- Corridors, passageways and garages

The Multi-Sensor features both motion and light detection. As an option, the sensor can be operated via remote control (from Tridonic). The sensor enables both motion detection and daylight-dependent lighting control; both of which can also be deactivated.

Addressing is performed via rotary switch or WAGO DALI Configurator.

Parameters can be adjusted individually via WAGO DALI Configurator.

Power supply is provided via DALI line.

The number of sensors, which can be operated on a DALI line, depends on the total power consumption of the specific devices and address range for the actuators and sensors. Due to the capacity of the DALI bus, a maximum of 16 DALI sensor couplers must be operated on the DALI Multi-Master Module (753-647).

#### Installation notes:

- The DALI MSensor 02 is supplied directly via DALI line.
- DALI is not SELV (Safety Extra Low Voltage). The installation instructions for mains voltage therefore apply.
- The detection range of the sensor must be within the lighting area of the controlled luminaires.
- The detection ranges of the sensors must not overlap as this may influence the lighting control.
- When installed at a height other than the recommended installation height (2.5 m), the presence and light sensor might show different characteristics. When mounted at a higher level, its sensitivity is reduced. If mounted at a lower level, its range is diminished.
- Heaters, fans, printers and copiers located in the detection range may cause incorrect presence detection.

#### Data

##### Technical Data

Current consumption typ.	6 mA from DALI line
Power supply	via DALI line

##### Material Data

Weight	90 g
--------	------

##### Environmental Requirements

Surrounding air (operating) temperature	0 50 °C
Surrounding air (storage) temperature	-25 55 °C
Protection class	IP20

##### Commercial data

Country of origin	SK
GTIN	4050821708384
Customs Tariff No.	90318080000

#### Downloads

##### Documentation

##### Data sheet

2851-8301 2851-8302 2851-8303 DALI Multi-Sensor data sheet

pdf 315.8 kB Download

### Bid Text

2851-8303	doc	Download
	34.3 kB	

### Additional Information

Disposal; Electrical and electronic equipment, Packaging V 1.0.0 pdf Download  
265.8 kB

## Application Notes

## Application Note CoDeSys 2.3

Application note: DALI 753-647 Configuration Interface

V1.0.2

zip

Download

This application note describes the WAGO DALI Configurator, the integration of the DALI visualization for configuring various sensor types and the implementation in a program.

Apr 29, 2019

3.1 MB

## CAD/CAE - Smart Data

## WSCAD

WSCAD Universe  Download