

## Data sheet | Item number: 210-840

Push-button marker; for frames, to be snapped in or glued in place; 27 x 27 mm; silver-colored

[www.wago.com/210-840](http://www.wago.com/210-840)



Color:

### Data

#### Technical data

Suitable	for Siemens
Marking	plain
Pre-assembly	250 markers/reel
Marking device	Smart Printer (Thermal Transfer Printer)

#### Physical data

Height	27 mm
Width	27 mm
Depth	0.65 mm
Marking surface	27 x 27 mm

#### Mechanical data

Mounting type	Snap-in or adhesive mounting
Smear resistance	smudge-proof in conjunction with 258-5005 Ink Ribbon

Subject to changes. Please also observe the further product documentation!

WAGO Corporation  
Germantown, WI 53022  
Phone: 1-800-DIN-RAIL (346-7245) | Fax: (262) 255-6222  
Email: [info.us@wago.com](mailto:info.us@wago.com) | Web: [www.wago.us](http://www.wago.us)

Do you have any questions about our products?  
We are always happy to take your call at (262) 255-6222 or 1 800-DIN-RAIL.



## Material data

Color	silver-colored
Material	Polyester
Adhesive information	Acrylic; permanent; foamed
Halogen-free	Yes
Weight	112 g

## Environmental requirements

Surrounding air temperature (storage)	≥22 °C
Relative humidity	40 ... 50 %

## Commercial data

Packaging type	bag
Country of origin	DK
GTIN	4055143965262
Customs tariff number	3926909985

## Required accessories

Cover	
Item no.: 210-841	<a href="http://www.wago.com/210-841">www.wago.com/210-841</a>
Cover; for frames, snap-in type, 27 x 27 mm; halogen-free; transparent	

## Downloads

### Documentation

#### Operating Instructions

210-852 Information on handling print material	1 Aug 28, 2020	pdf 1.0 MB	Download
--	-------------------	---------------	----------

## Environmental Product Compliance

### Compliance Search

Environmental Product Compliance 210-840	URL	Download
Push-button marker; for frames, to be snapped in or glued in place; 27 x 27 mm; silver-colored		

Subject to changes. Please also observe the further product documentation!

WAGO Corporation  
Germantown, WI 53022  
Phone: 1-800-DIN-RAIL (346-7245) | Fax: (262) 255-6222  
Email: [info.us@wago.com](mailto:info.us@wago.com) | Web: [www.wago.us](http://www.wago.us)

Do you have any questions about our products?  
We are always happy to take your call at (262) 255-6222 or 1 800-DIN-RAIL.

## Installation Notes

### Stick on frame



Remove the push-button label from the carrier film.

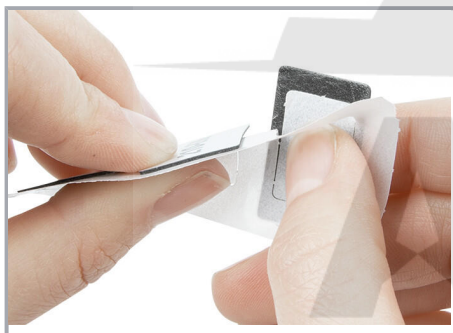


Stick the push-button label onto the push-button frame.



WAGO's push-button label is attached to the push-button frame. A cover cannot be applied.

### Snap into frame



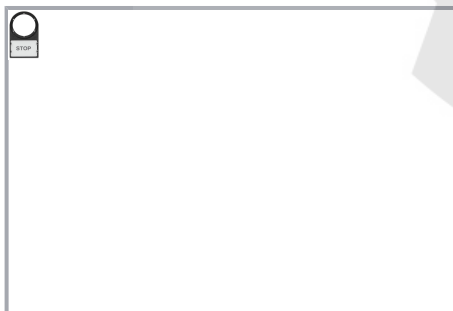
Remove the push-button label from the carrier film. Press and hold the pre-punched carrier film to do this.



Snap the push-button label, with the carrier film on the back, on to the push-button frame. Only the area of the push-button label outside the remaining carrier film is adhesive.



Optional: A cover may also be installed on a push-button frame equipped with latches.



Push-button label and cover are snapped on to the push-button frame.

Subject to changes. Please also observe the further product documentation!