

REVISIONS			
REV.	DESCRIPTION	DATE	APPROVED
A	INITIAL RELEASE IN SOLID WORKS	2/11/2010	

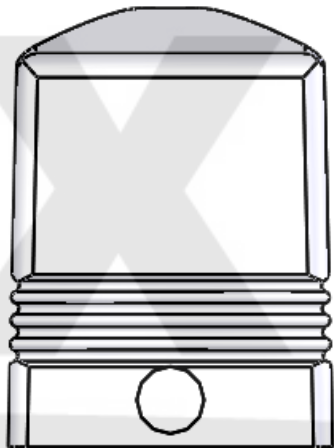
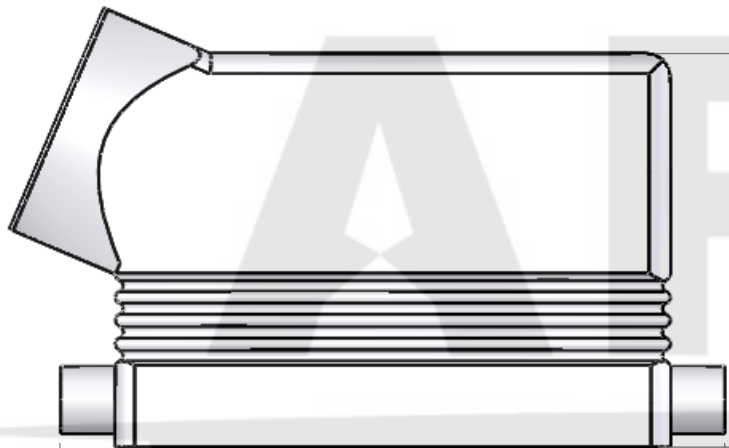
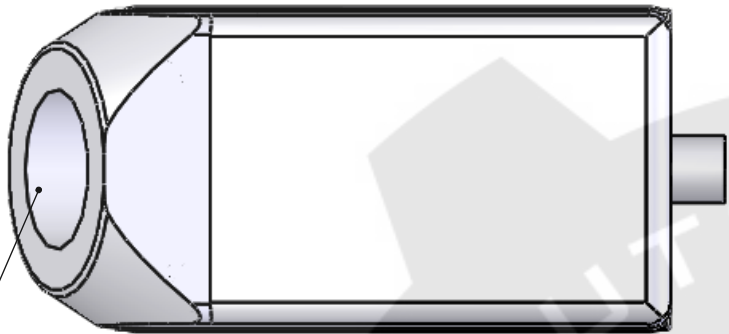
D

C

B

A

1/2" NPT OPENING



[52]
2.1

[73]
2.9

[88]
3.5

[43]
1.7

SEAL RATING OF IP 65 ONLY ACHIEVED WHEN FULLY LATCHED TO MATING BASE AND WITH AN APPROPRIATE SEALING GLAND INSTALLED

PROPRIETARY AND CONFIDENTIAL
THE INFORMATION CONTAINED IN THIS DRAWING IS THE SOLE PROPERTY OF MENCOM CORPORATION. ANY REPRODUCTION IN PART OR AS A WHOLE WITHOUT THE WRITTEN PERMISSION OF MENCOM CORPORATION IS PROHIBITED.

UNLESS OTHERWISE SPECIFIED:	
DIMENSIONS ARE IN INCHES AND [MM]	
MATERIAL	
FINISH	
DO NOT SCALE DRAWING	

NAME	DWM
DRAWN	
CHECKED	
ENG APPR.	
MFG APPR.	
Q.A.	
COMMENTS:	

HOUSING MATERIALS	
BODY:	EPOXY COATED DIE CAST ALUMINUM
MENCOM CORPORATION	
TITLE:	
SIZE	DWG. NO.
B	CHOT-10.4L
SCALE: 1:1	WEIGHT:
SHEET 1 OF 1	

REV
A