

CDA 10 poles + ⊕ 16A - 250Venclosures:
size "49.16"

page:

IL-BRID

374 - 377, 382

CZ7 IP67, single lever

384

W-TYPE for aggressive environments

519

E-Xtreme® corrosion proof

540

EMC

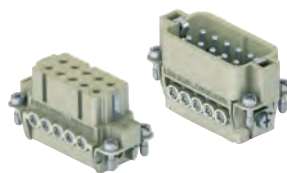
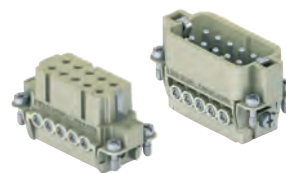
576

panel supports:

page:

COB + adaptor

652 - 654

inserts,
screw terminal connectioninserts,
screw terminal connection

description

part No.

part No.

indirect, with pressure plate ¹⁾
female inserts with female contacts
male inserts with male contacts**CDAF 10**
CDAM 10direct, without pressure plate ²⁾
female inserts with female contacts
male inserts with male contacts**CDAF 10 X**
CDAM 10 X

- characteristics according to EN 61984:

16A 250V 4kV 3**16A 230/400V 4kV 2**

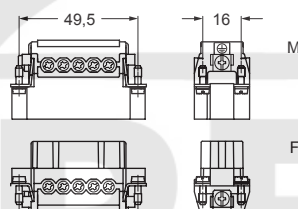
- cULus (UL for USA and Canada), SR, CEC, DNV-GL

BUREAU VERITAS EAC certified

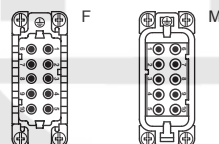
- rated voltage according to UL/CSA: 600V

- insulation resistance: $\geq 10 \text{ G}\Omega$ - ambient temperature limit: $-40^\circ\text{C} \dots +125^\circ\text{C}$ - made of self-extinguishing thermoplastic resin
UL 94V-0- mechanical life: ≥ 500 cycles- contact resistance: $\leq 1 \text{ m}\Omega$

- according to recommendations EUROMAP N° 16

- for max. current load see the connector inserts derating
diagram below; for more information see page 28

contacts side (front view)



- inserts with pressure plate for conductors

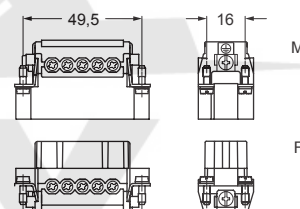
cross-sections:

0,5 - 4 mm² - AWG 20 - 12

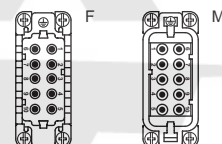
- conductors stripping length: 7 mm

- terminal screw torque: 0,5 Nm (4.4 lb.in), for more
information see page 20 and 21¹⁾ for unprepared conductors

CDA ...



contacts side (front view)



- inserts without pressure plate for prepared

conductors with cross-sections:

0,25 - 2,5 mm² - AWG 24 - 14- terminal screw torque: 0,5 Nm (4.4 lb.in), for more
information see page 20 and 21²⁾ for conductors with end sleeve ferrule

CDA ... X

**CDA 10 poles connector inserts**
Maximum current load derating diagram