

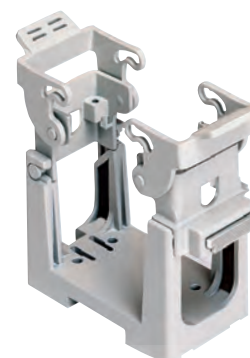
COB panel supports for multipole connectors

| inserts | | page: |
|---------|--------------------------------|-----------|
| CD | 40, 64 poles + ⊕ | 70, 72 |
| CDD | 24, 42, 72, 108 poles + ⊕ | 76 - 81 |
| CDS | 9, 18, 27, 42 poles + ⊕ | - |
| CDSH | 9, 18, 27, 42 poles + ⊕ | 86 - 89 |
| CDSH NC | 6 poles + ⊕ | 95 |
| CNE | 6, 10, 16, 24 poles + ⊕ | 110 - 113 |
| CSE | 6, 10, 16, 24 poles + ⊕ | - |
| CSH | 6, 10, 16, 24 poles + ⊕ | 110 - 113 |
| CSH S | 6, 10, 16, 24 poles + ⊕ | 122 - 125 |
| CCE | 6, 10, 16, 24 poles + ⊕ | 130 - 133 |
| CME | 3+2, 6+2, 10+2 (aux) poles + ⊕ | 136 - 140 |
| CMSH | 3+2, 6+2, 10+2 (aux) poles + ⊕ | 136 - 140 |
| CMCE | 3+2, 6+2, 10+2 (aux) poles + ⊕ | 137 - 141 |
| CSS | 6, 10, 16, 24 poles + ⊕ | 148 - 151 |
| CQE | 10, 18, 32, 46 poles + ⊕ | 168 - 171 |
| CQEE | 40, 64 poles + ⊕ | 176 - 177 |
| CP | 6 poles + ⊕ | 178 |
| CX | 8/24, 6/36, 12/2 poles + ⊕ | 194 - 199 |
| CX | 4/0, 4/2, 4/8, 6/6 poles + ⊕ | 200 - 206 |
| MIXO | 2, 3, 4, 6 modules | 262 - 317 |

connector carrier for faceplate mounting in window, snap fastening



connector carrier baseplate for mounting on DIN EN 60715 rail or fixed mounting using screws



description

part No.

part No.

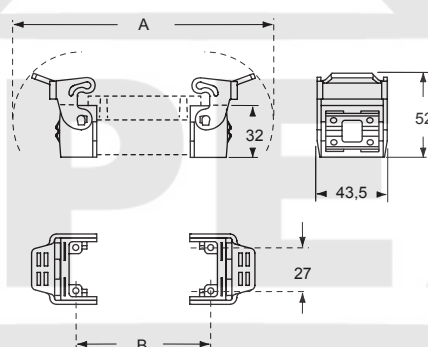
kit with 2 elements, for coupling of inserts
with screw fixing centre distance (short side = 27 mm)

COB TCQ

kit comprising frame and mobile blocks, for insert coupling:
with screw fixing centre distance of 44 x 27 mm
with screw fixing centre distance of 57 x 27 mm
with screw fixing centre distance of 77,5 x 27 mm
with screw fixing centre distance of 104 x 27 mm

It is the responsibility of the installer to verify the continuity of the PE protective earth circuit ⊕ between the two halves of the connector.

COB TCQ

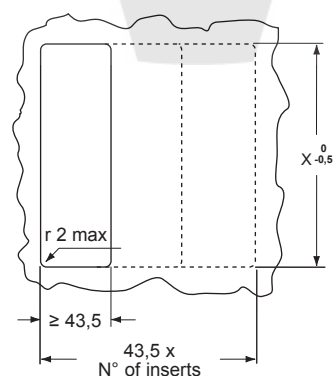


COB TCQ

| for inserts | A | B |
|-----------------------------------|-------|------|
| with centre distance 44 x 27 mm | 120 | 44 |
| with centre distance 57 x 27 mm | 133 | 57 |
| with centre distance 77,5 x 27 mm | 153,5 | 77,5 |
| with centre distance 104 x 27 mm | 180 | 104 |

panel cut-out COB TCQ

window size on plate thickness 1,3-3 mm



| for insert coupling: | X _{0,5} |
|-----------------------------------|------------------|
| with centre distance 44 x 27 mm | 65 |
| with centre distance 57 x 27 mm | 78 |
| with centre distance 77,5 x 27 mm | 98 |
| with centre distance 104 x 27 mm | 125 |

COB 06 BC

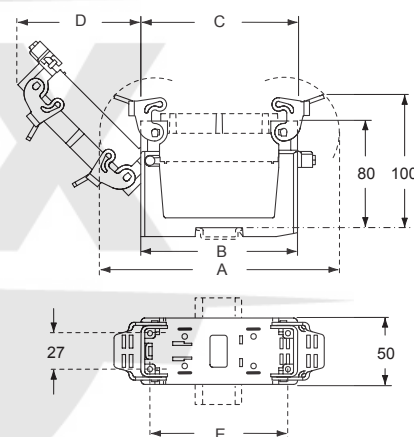
COB 10 BC

COB 16 BC

COB 24 BC

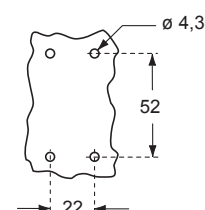
COB BC

overall dimensions with longitudinal DIN rails

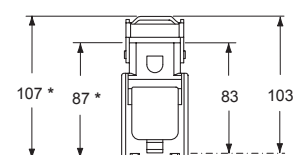


| part No. | A | B | C | D | E |
|-----------|-------|------|------|------|------|
| COB 06 BC | 120 | 91,5 | 58 | 50 | 44 |
| COB 10 BC | 133 | 91,5 | 71 | 59,5 | 57 |
| COB 16 BC | 153,5 | 91,5 | 91,5 | 74 | 77,5 |
| COB 24 BC | 180 | 118 | 118 | 93 | 104 |

panel cut-out COB BC



overall dimensions without DIN rails (values with "asterisk") overall dimensions with transverse DIN rails



Optional
PE
earth jumpers
(page 655)



CAUS