



CH - CA and MH - MA 180 °C version

inserts		page:
CNE RY	24 poles + ⊕	119
CX RY	4/8 poles + ⊕	204

bulkhead and surface mounting housings and cover

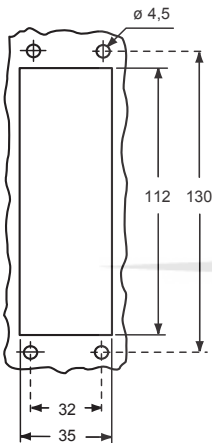


hoods and cover

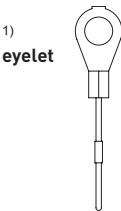


description	part No.	entry Pg	part No.	entry M	part No.	entry Pg	part No.	entry M
bulkhead mounting housing with levers and gasket	CHIR 24	–						
surface mounting housing, with levers, high construction	CAPR 24.21	21	MAPR 24.32	32				
cover with 4 pegs (for enclosures) ¹⁾	CHCR 24							
enclosure with pegs, side entry					CHOR 24	21	MHOR 24.25	25
enclosure with pegs, side entry, high construction					CAOR 24.29	29	MAOR 24.40	40
enclosure with pegs, top entry					CHVR 24	21	MHVR 24.25	25
enclosure with pegs, top entry, high construction					CAVR 24.29	29	MAVR 24.40	40
cover with 2 levers (for hoods) ²⁾					CHCR 24 G			

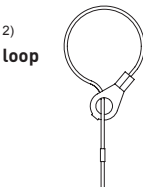
panel cut-out for bulkhead mounting housings



For fixing on housings



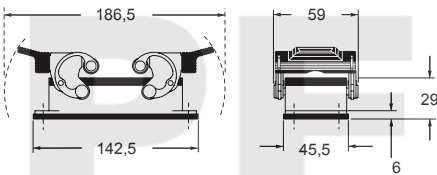
For fixing on hoods



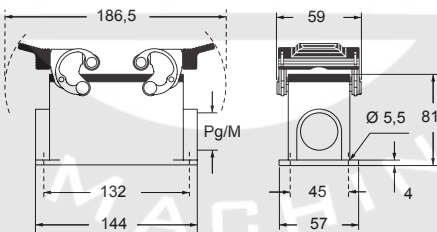
CALUS Type 4/4X/12



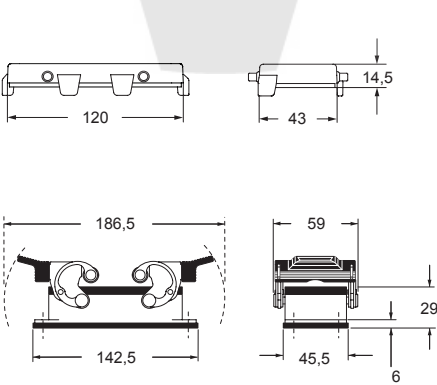
CHIR



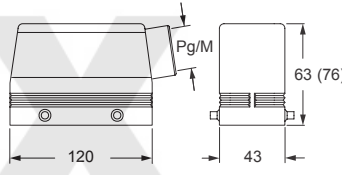
CAPR and MAPR



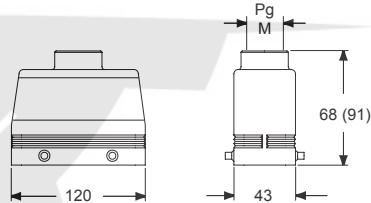
CHCR



CHOR (CAOR) and MHOR (MAOR)



CHVR (CAVR) and MHVR (MAVR)



CHCR G

