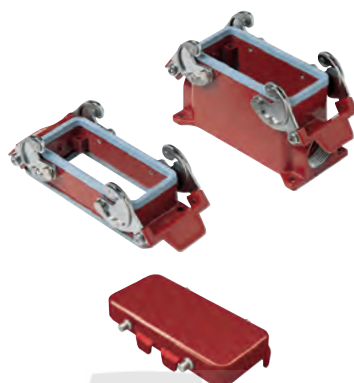


inserts

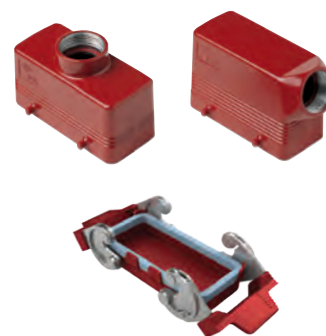
CNE RY	16 poles + ⊕	118
CP RY	6 poles + ⊕	178
CX RY	4/0 and 4/2 poles + ⊕	202 - 203

page:

bulkhead and surface mounting housings and cover

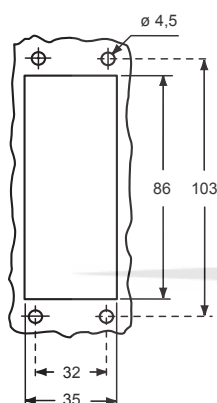


hoods and cover

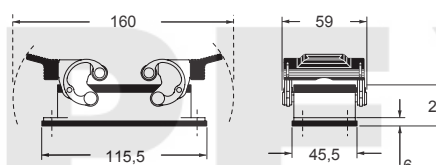


description	part No.	entry Pg	part No.	entry M	part No.	entry Pg	part No.	entry M
bulkhead mounting housing with levers and gasket	CHIR 16	--						
surface mounting housing, with levers, high construction	CAPR 16.21	21	MAPR 16.32	32				
cover with 4 pegs (for enclosures) ¹⁾	CHCR 16							
enclosure with pegs, side entry					CHOR 16	21	MHOR 16.25	25
enclosure with pegs, side entry, high construction					CAOR 16.21	21	MAOR 16.40	40
enclosure with pegs, top entry					CHVR 16	21	MHVR 16.25	25
enclosure with pegs, top entry, high construction					CAVR 16.21	21	MAVR 16.40	40
cover with 2 levers (for hoods) ²⁾					CHCR 16 G			

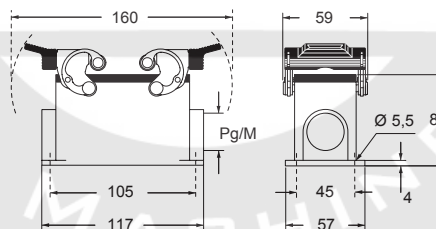
panel cut-out for bulkhead mounting housings



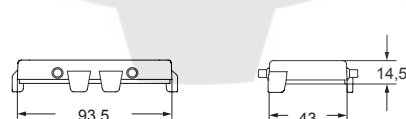
CHIR



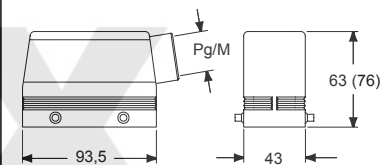
CAPR and MAPR



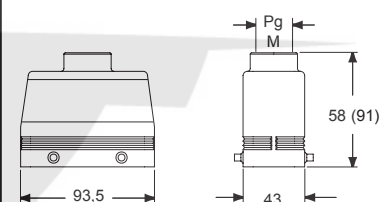
CHCR



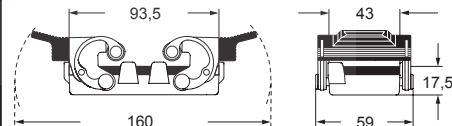
CHOR (CAOR) and MHOR (MAOR)



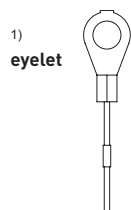
CHVR (CAVR) and MHVR (MAVR)



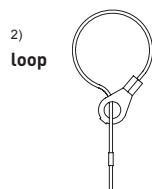
CHCR G



For fixing on housings



For fixing on hoods

C[®]ALUSType
4/4X/12