

inserts

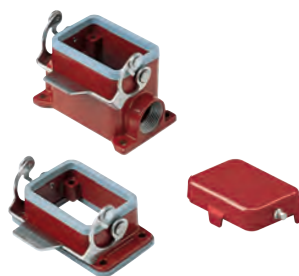
CNE RY

6 poles + ⊕

page:

116

bulkhead and surface mounting housings and cover

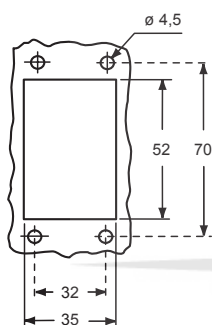


hoods and cover

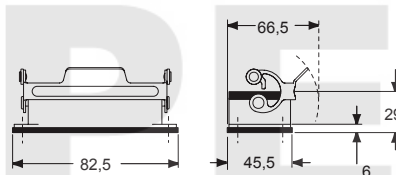


description	part No.	entry Pg	part No.	entry M	part No.	entry Pg	part No.	entry M
bulkhead mounting housing with lever and gasket	CZIR 06 L	--						
surface mounting housing, with lever	CZPR 06 L	16	MZPR 06 L20	20				
surface mounting housing, with lever, high construction	CZAPR 06 L	21	MZAPR 06 L32	32				
cover with pegs (for enclosures) ¹⁾	CHCR 06 L							
enclosure with pegs, side entry					CHOR 06 L13	13.5	MHOR 06 L20	20
enclosure with pegs, top entry, high construction					CAOR 06 L21	21	MAOR 06 L32	32
enclosure with pegs, top entry					CHVR 06 L13	13.5	MHVR 06 L20	20
enclosure with pegs, top entry, high construction					CAVR 06 L21	21	MAVR 06 L32	32
cover with lever (for hoods) ²⁾					CZCR 06 LG			

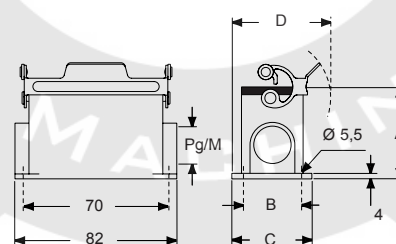
panel cut-out for bulkhead mounting housings



CZIR L

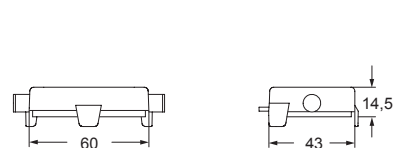


CZPR L - CZAPR L and MZPR L - MZAPR L

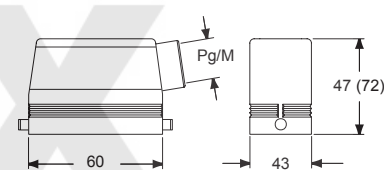


type	A	B	C	D
CZPR L / MZPR L	53	40	52	69,5
CZAPR L / MZAPR L	74	45	57	72

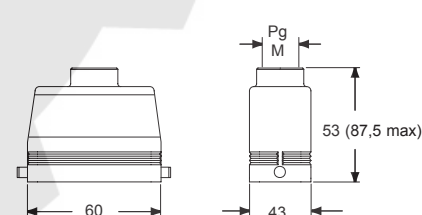
CHCR L



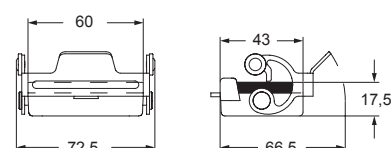
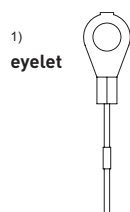
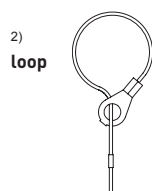
CHOR L (CAOR L) and MHOR L (MAOR L)



CHVR L (CAVR L) and MHVR L (MAVR L)



CZCR LG

For fixing
on housings1)
eyeletFor fixing
on hoods2)
loopC[®]ALUSType
4/4X/12