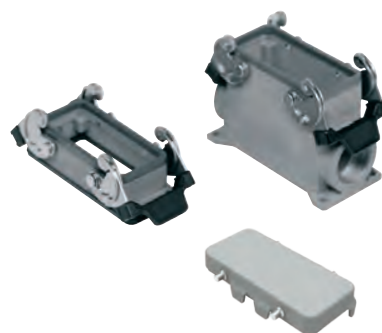


inserts		page:
CD	40 poles + ⊕	70
CDD	72 poles + ⊕	79
CDS	27 poles + ⊕	-
CDSH	27 poles + ⊕	88
CNE	16 poles + ⊕	112
CSE	16 poles + ⊕	-
CSH	16 poles + ⊕	112
CSH S	16 poles + ⊕	124
CCE	16 poles + ⊕	132
CMSH, CMCE	6+2 (aux) poles + ⊕	138 - 139
CSS	16 poles + ⊕	150
CT, CTS (10A) *)	40 poles + ⊕	156
CT, CTSE (16A) *)	16 poles + ⊕	162
CQE	32 poles + ⊕	170
CQEE	40 poles + ⊕	176
CP	6 poles + ⊕	178
CX	6/12, 6/36 and 12/2 poles + ⊕	197 - 199
CX	4/0 and 4/2 poles + ⊕	200 - 201
MIXO	4 modules	262 - 317

*) only for enclosure CHIS 16

housings and cover

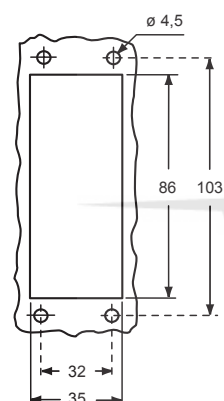


hoods and cover

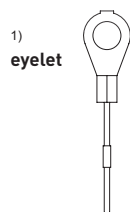


description	part No.	entry Pg	part No.	entry M	part No.	entry Pg	part No.	entry M
bulkhead mounting housing with levers and gasket	CHIS 16	--						
surface mounting housing, with levers, high construction	CAPS 16.21	21	MAPS 16.32	32				
cover with 4 pegs (for enclosures with 2 levers) ¹⁾	CHCS 16							
enclosure with pegs, side entry					CHOS 16	21	MHOS 16.25	25
enclosure with pegs, side entry							MHOS 16.32	32
enclosure with pegs, side entry, high construction					CAOS 16.29	29	MAOS 16.32	32
enclosure with pegs, side entry, high construction							MAOS 16.40	40
enclosure with pegs, top entry					CHVS 16	21	MHVS 16.25	25
enclosure with pegs, top entry							MHVS 16.32	32
enclosure with pegs, top entry, high construction					CAVS 16.29	29	MAVS 16.32	32
enclosure with pegs, top entry, high construction							MAVS 16.40	40
cover with 2 levers (for enclosures with 4 pegs) ²⁾					CHCS 16 G			

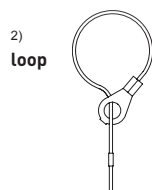
panel cut-out for bulkhead mounting housings



For fixing on housings



For fixing on hoods



CAUS Type 4/4X/12

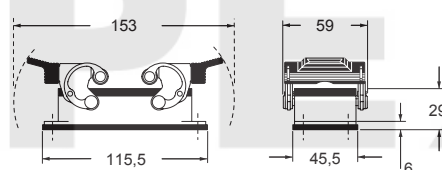


insulating cable gland or fittings without gasket

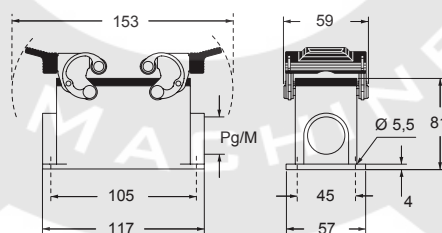


cable gland with O-Ring gasket

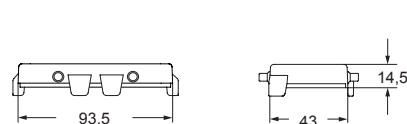
CHIS



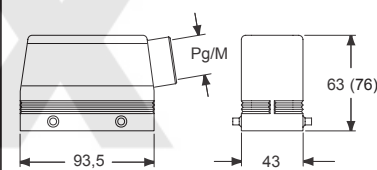
CAPS and MAPS



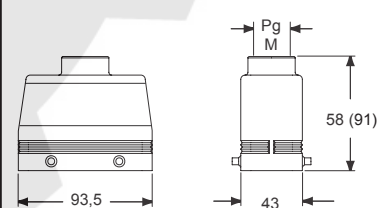
CHCS



CHOS (CAOS) and MHOS (MAOS)



CHVS (CAVS) and MHVS (MAVS)



CHCS G

