

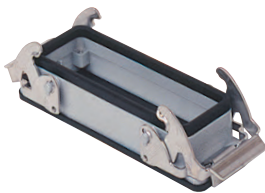


C7 - C7A and M7 - M7A IP67 enclosures V-TYPE lever version

inserts		page:
CD	64 poles + ⊕	72
CDD	108 poles + ⊕	81
CDS	42 poles + ⊕	-
CDSH	42 poles + ⊕	89
CNE	24 poles + ⊕	113
CSE	24 poles + ⊕	-
CSH	24 poles + ⊕	113
CSH S	24 poles + ⊕	125
CCE	24 poles + ⊕	133
CMSH	10+2 (aux) poles + ⊕	140
CMCE	10+2 (aux) poles + ⊕	141
CSS	24 poles + ⊕	151
CT, CTS (10A) *	64 poles + ⊕	157
CT, CTSE (16A) *	24 poles + ⊕	163
CQE	46 poles + ⊕	171
CQEE	64 poles + ⊕	177
CX	4/8 and 6/6 poles + ⊕	204, 206
MIXO	6 modules	262 - 317

\*) can be used only in bulkhead mounting housings

bulkhead mounting housings  
with 2 levers in stainless steel

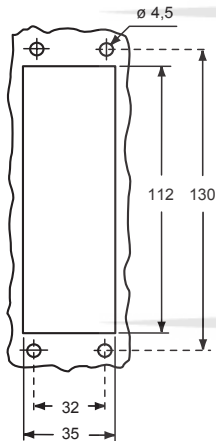


surface mounting housings  
with 2 levers in stainless steel



description	part No.	part No.	entry Pg	part No.	entry M
with levers and gasket, size "104.27"	C71 24				
with levers, size "104.27"		C7P 24	21	M7P 24.25	25
with levers, high construction, size "104.27"		C7P 24.2	21 x 2	M7P 24.225	25 x 2
with levers, high construction, size "104.27"		C7AP 24.21	21	M7AP 24.32	32
with levers, high construction, size "104.27"		C7AP 24.221	21 x 2	M7AP 24.232	32 x 2
with levers, high construction, size "104.27"		C7AP 24.29	29	M7AP 24.40	40
with levers, high construction, size "104.27"		C7AP 24.229	29 x 2	M7AP 24.240	40 x 2

panel cut-out for bulkhead mounting housings



The lever, due to the vertical closing movement, offers an IP66/IP67/IP69 degree of protection (according to EN 60529) when fitted with a complete and coupled connector and used with ILME standard hoods in die cast aluminum with pegs (without adapter).

Hoods  
(page 414)



Hoods  
(pages 472-473)

**CALUS** Type 4/4X/12

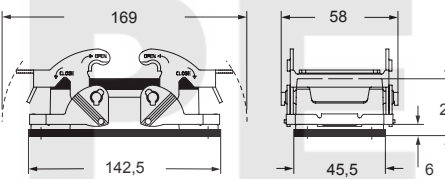


insulating cable gland or fittings  
without gasket



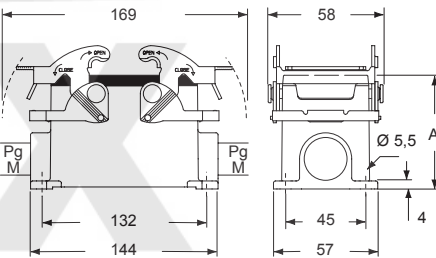
cable gland  
with O-Ring gasket

C71



For bulkhead mounting housings, IP66/IP67/IP69 degree of protection is guaranteed for mounting on a sufficiently rigid panel; use suitable length M4 screws (negligible surface buckling when subjected to tightening couple on the fixing screws of 0,8 - 1,2 Nm or deformation caused by the weight of the complete connector). In case of insufficient rigidity use of C7.. FL counterflanges (page 443) is recommended, in which case use suitable length M4 screws and M4 (on the enclosure) and M4 (on the counterflange) flat/ spring washers with M4 locknut. In addition, the panel surface in contact with the counterflange gasket of the bulkhead mounting housings must be free from defects (deep scratches, grooves, burrs) that could negatively affect the performance of the gasket.

C7P - C7AP and M7P - M7AP



type	A
C7P/M7P 24	63
C7AP/M7AP 24	81