

CX 01 GF/GM 1 pole 100A - 830V

The modular inserts must be installed in suitable frames which are then mounted in traditional enclosures* or in COB panel support.

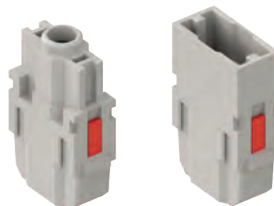
Single-sized modular units may be directly mounted inside MIXO ONE enclosures.

frames for modular units* page: 316 - 317

MIXO ONE enclosures 369

* enclosures: bulkhead mounting housings, high construction housings or high construction hoods

modular units,
crimp connections



100A silver plated crimp contacts,
PE adapter



description

part No.

part No.

without contacts (to be ordered separately)

female inserts for female contacts

male inserts for male contacts

100A female crimp contacts

8-10 mm² AWG 8-7

16 mm² AWG 6-5

25 mm² AWG 4-3

35 mm² AWG 2

100A male crimp contacts

8-10 mm² AWG 8-7

16 mm² AWG 6-5

25 mm² AWG 4-3

35 mm² AWG 2

cable earthing adapter 16 mm² (AWG 6-5)

CX 01 GF
CX 01 GM

CGFA 10
CGFA 16
CGFA 25
CGFA 35

CGMA 10
CGMA 16
CGMA 25
CGMA 35

CGT 16

silver plated

- characteristics according to EN 61984:

100A 830V 8kV 3

- BNVGL BUREAU VERITAS ENEC certified

- rated voltage according to UL/CSA: 600V

- insulation resistance: $\geq 10 \text{ G}\Omega$

- ambient temperature limit: -40 °C ... +125 °C

- made of self-extinguishing thermoplastic resin
UL 94V-0

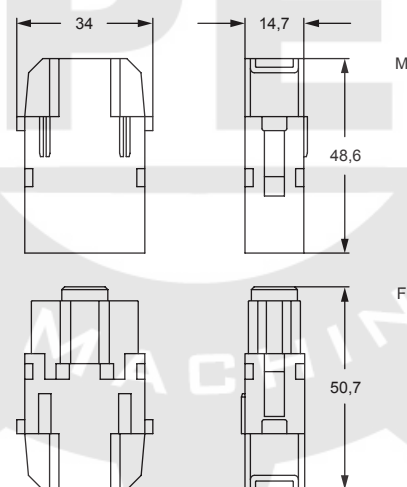
- mechanical life: ≥ 500 cycles

- contact resistance: $\leq 0,3 \text{ m}\Omega$

- it is recommended to crimp the contacts with
crimping tools homologated by ILME (please see
the crimping tool section 100A contacts, CGF and CGM
series) on pages 708 - 741

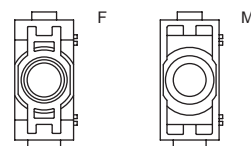
- contact removal only using a screwdriver

- for max. current load see the connector inserts derating
diagram below; for more information see page 28



contacts side (front view)

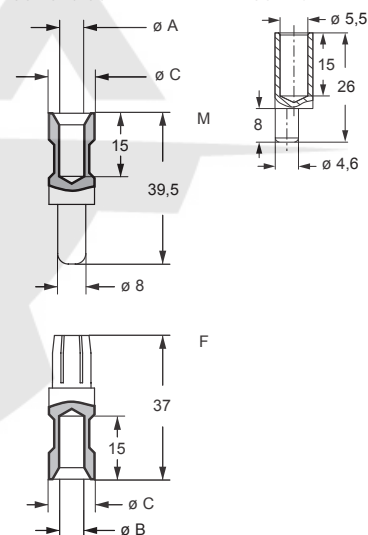
side with reference arrow ▲



- 1 frame slot

CGF and CGM

CGT 16



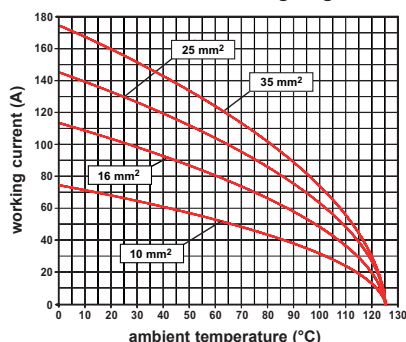
CGF and CGM contacts

conductor section (mm ²)	conductor slot ø A (mm)	ø B (mm)	ø C (mm)	conductor stripping length (mm)
8-10	4,3	4,3	13	15
16	5,5	5,5	13	15
25	7,0	7,0	13	15
35	7,9	8,2	12,5	15

How to use the PE adapter (CGT 16):

- 1) Strip 15 mm of flexible PE protective cable
- 2) Crimp the cable on the CGT 16 adapter by using the CGPZ pliers with the CGD 16 C matrix
- 3) Fix the adapter tip in the larger earth terminal (6 mm²) of frames CX...TM/TF
- 4) To be used with bulkhead mounting housings or high construction hoods
- 5) Cannot be used with T-TYPE series

CX 01 G, 1 pole connector inserts
Maximum current load derating diagram



Watch
our
online
tutorial