

CDA 16 poles + ⊕ 16A - 250Venclosures:
size "66.16"

page:

IL-BRID

378 - 382

CZ7 IP67, single lever

385

W-TYPE for aggressive environments

520

E-Xtreme® corrosion proof

541

EMC

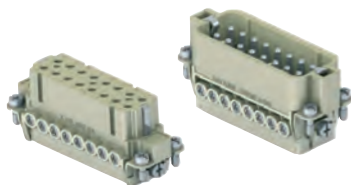
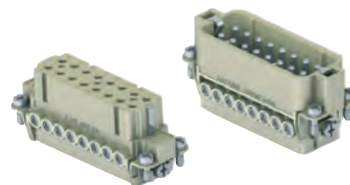
577

panel supports:

page:

COB + adaptor

652 - 654

inserts,
screw terminal connectioninserts,
screw terminal connection




description

part No.

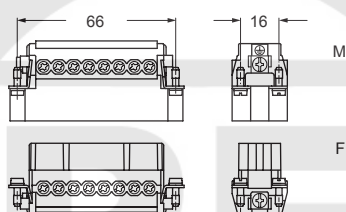
part No.

indirect, with pressure plate ¹⁾
female inserts with female contacts
male inserts with male contacts**CDAF 16**
CDAM 16direct, without pressure plate ²⁾
female inserts with female contacts
male inserts with male contacts**CDAF 16 X**
CDAM 16 X

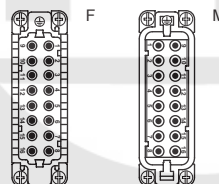
- characteristics according to EN 61984:

16A 250V 4kV 3**16A 230/400V 4kV 2**- cULus (UL for USA and Canada),    **ERC** certified

- rated voltage according to UL/CSA: 600V
- insulation resistance: $\geq 10 \text{ G}\Omega$
- ambient temperature limit: $-40^\circ\text{C} \dots +125^\circ\text{C}$
- made of self-extinguishing thermoplastic resin UL 94V-0
- mechanical life: ≥ 500 cycles
- contact resistance: $\leq 1 \text{ m}\Omega$
- according to recommendations EUROMAP N° 13 / N° 14.1
- for max. current load see the connector inserts derating diagram below; for more information see page 28



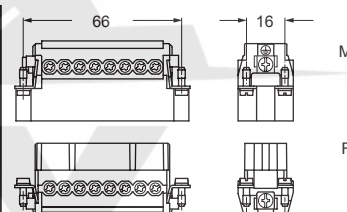
contacts side (front view)



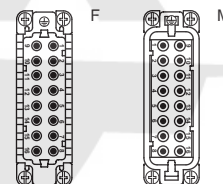
- inserts with pressure plate for conductors cross-sections:
0,5 - 4 mm² - AWG 20 - 12
- conductors stripping length: 7 mm
- terminal screw torque: 0,5 Nm (4.4 lb.in), for more information see page 20 and 21

¹⁾ for unprepared conductors

CDA ...



contacts side (front view)



- inserts without pressure plate for prepared conductors with cross-sections:
0,25 - 2,5 mm² - AWG 24 - 14
- terminal screw torque: 0,5 Nm (4.4 lb.in), for more information see page 20 and 21

²⁾ for conductors with end sleeve ferrule

CDA ... X

**CDA 16 poles connector inserts**
Maximum current load derating diagram