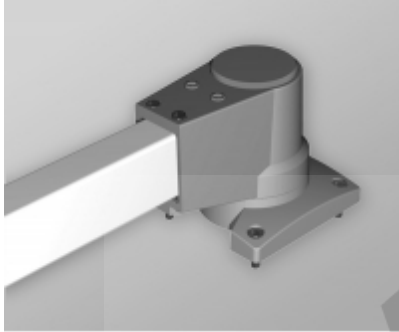




Quality Products. Service Excellence.

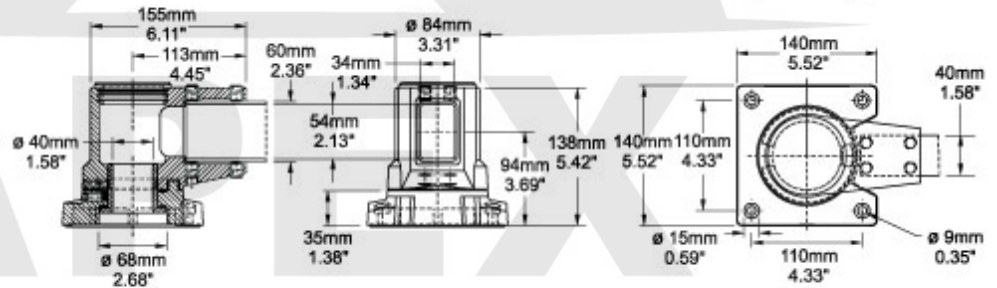
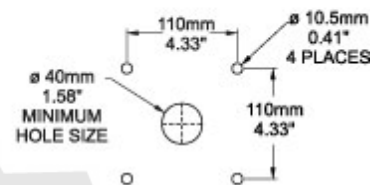
## Tara Plus Socket Joint TPSSSJ Series



- Accepts 60x40mm rectangular tube parallel to its mounting surface.
- Die-cast Aluminum G Al Si 12.
- Integrated movement stop.
- Service free bearings.
- Rotates 300°.
- Adjustment screws (red screws).
- Accessible from the top.



### Hole Pattern



Front Section Socket Joint

End View

TopView

Part No. R149-005-000

Data subject to change without notice

© 2022. Hammond Manufacturing Ltd. All rights reserved.