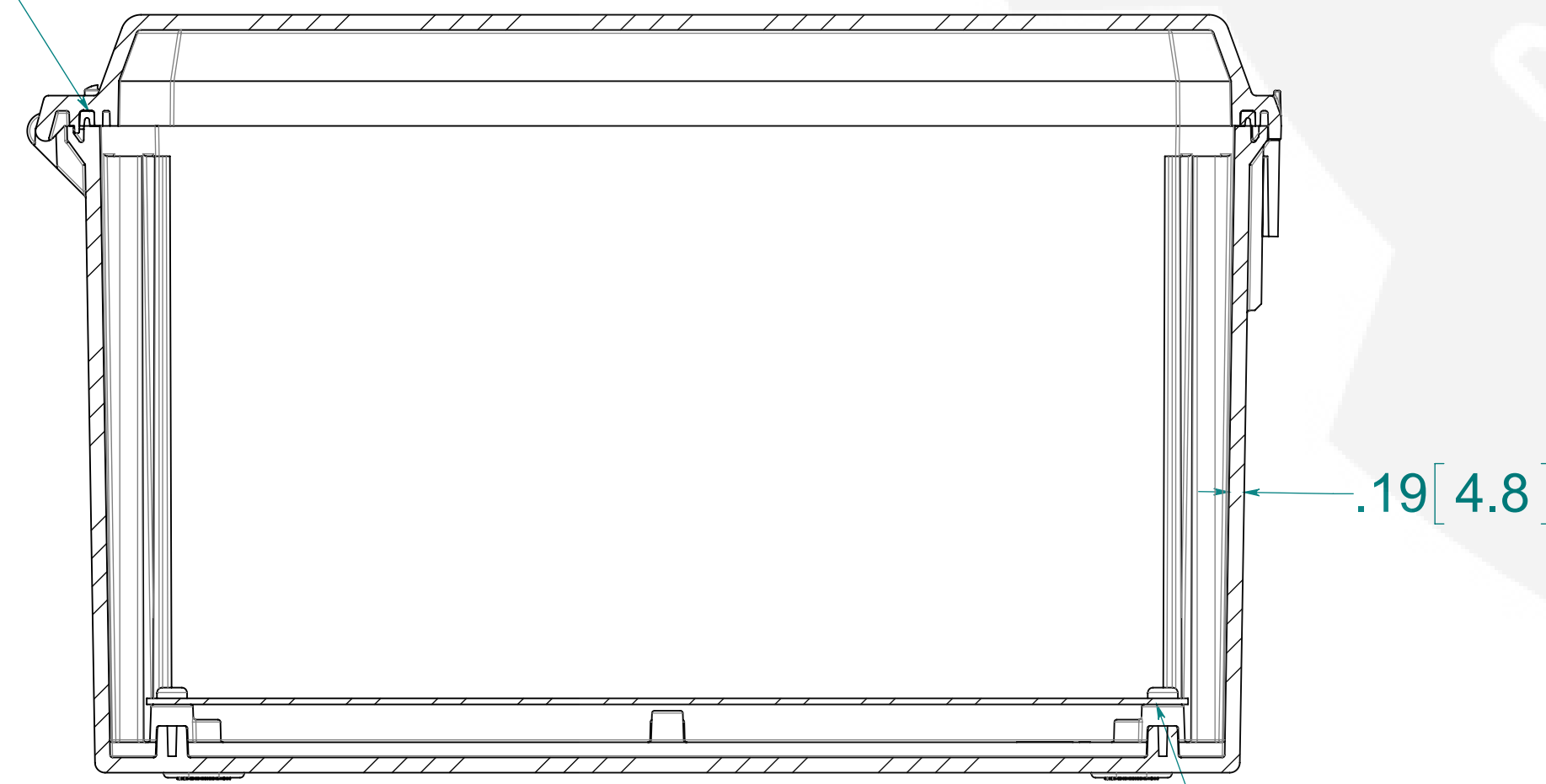


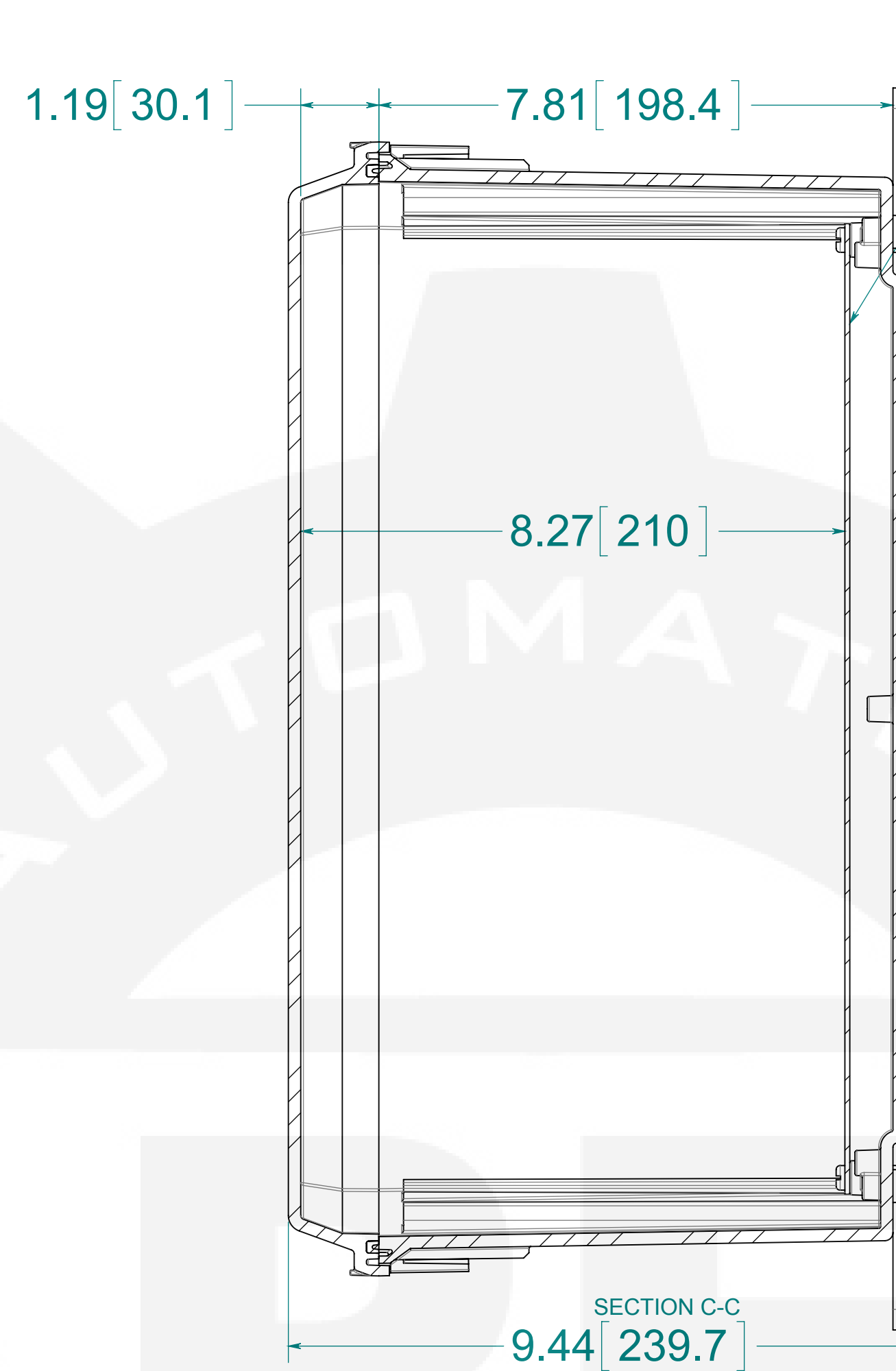
(4) EACH #10-32 BRASS INSERTS AND STAINLESS STEEL CAPTIVE COVER SCREWS WITH RETAINING O-RING

FIP POLYURETHANE FOAM GASKET



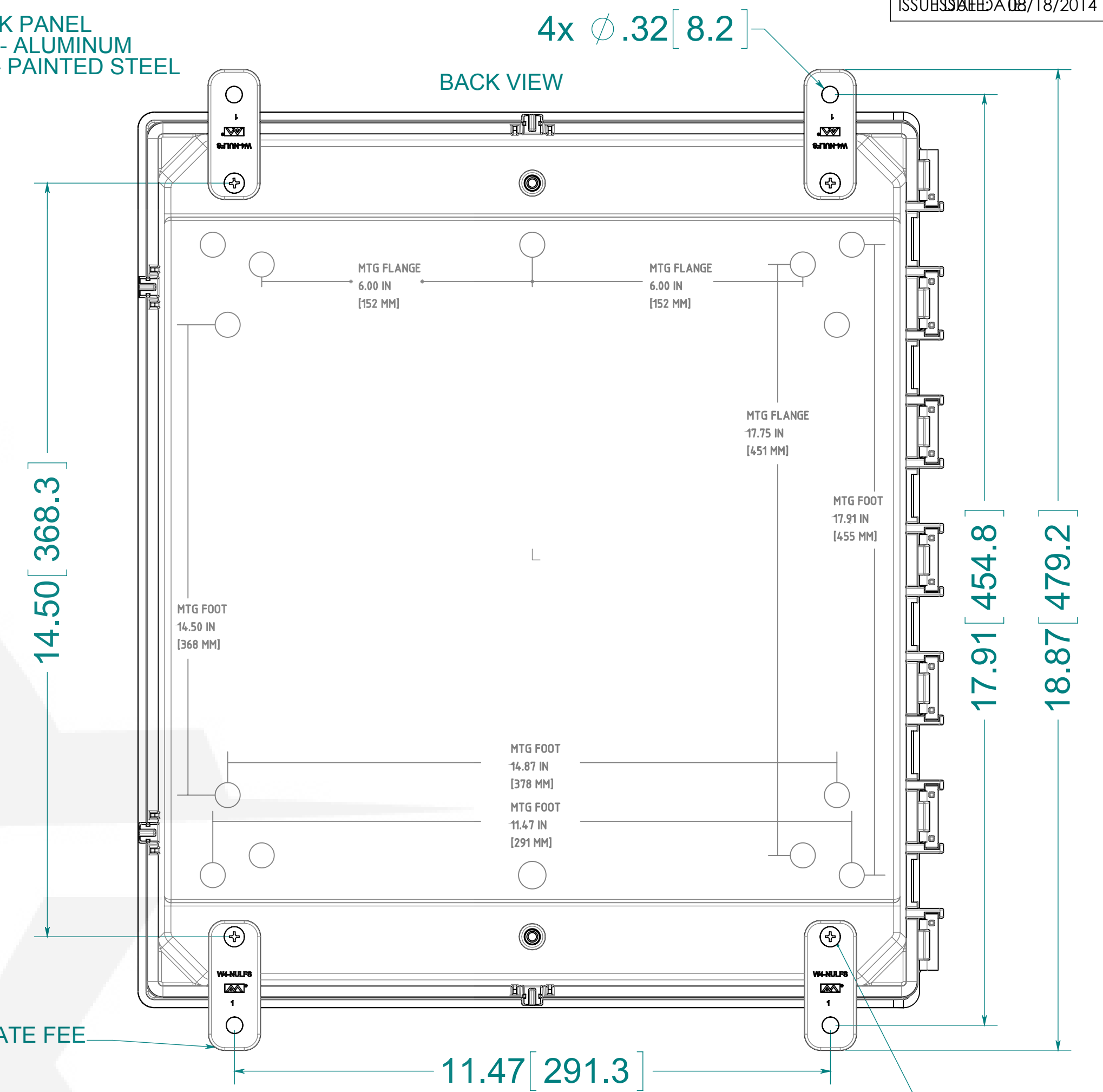
SECTION D-D

(4) EACH #10-32 BRASS INSERTS PLATED CARBON STEEL SCREWS TO RETAIN BACK PANEL



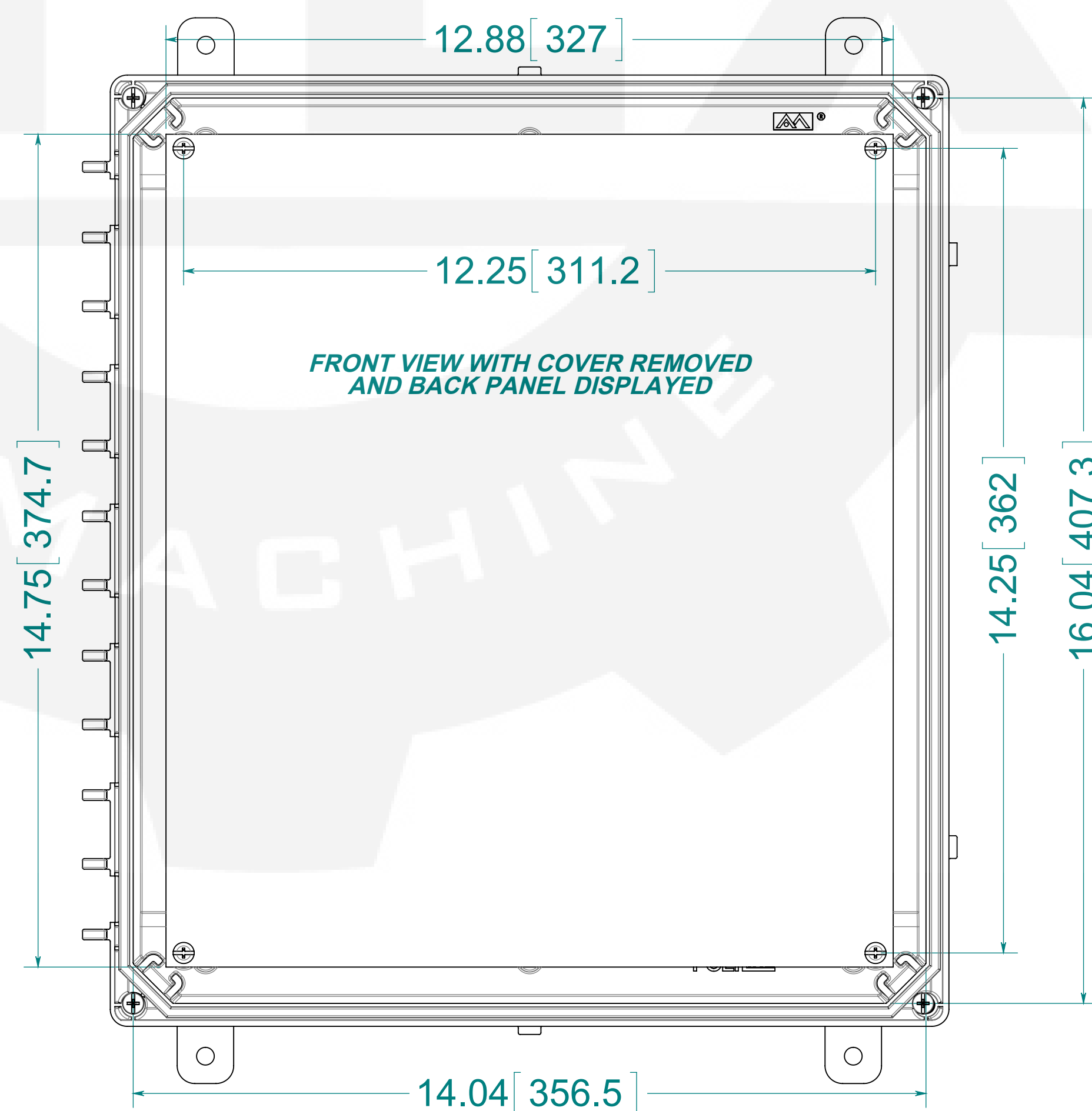
OPTIONAL BACK PANEL  
.100[2.54] TH'K - ALUMINUM  
.075[1.91] TH'K - PAINTED STEEL

(4) POLYCARBONATE FEE



(4) EACH #10-32 BRASS INSERTS AND STAINLESS STEEL FLANGE AND FEET SCREWS

MATERIAL:  
BOX: INJECTION MOLDED POLYCARBONATE  
STANDARD COVER: INJECTION MOLDED POLYCARBONATE  
CLEAR COVER: INJECTION MOLDED POLYCARBONATE



FRONT VIEW WITH COVER REMOVED  
AND BACK PANEL DISPLAYED



PART No. PCJ16148

for more information visit  
[www.hammfg.com](http://www.hammfg.com)  
Data subject to change without notice

Drawing Not to Scale