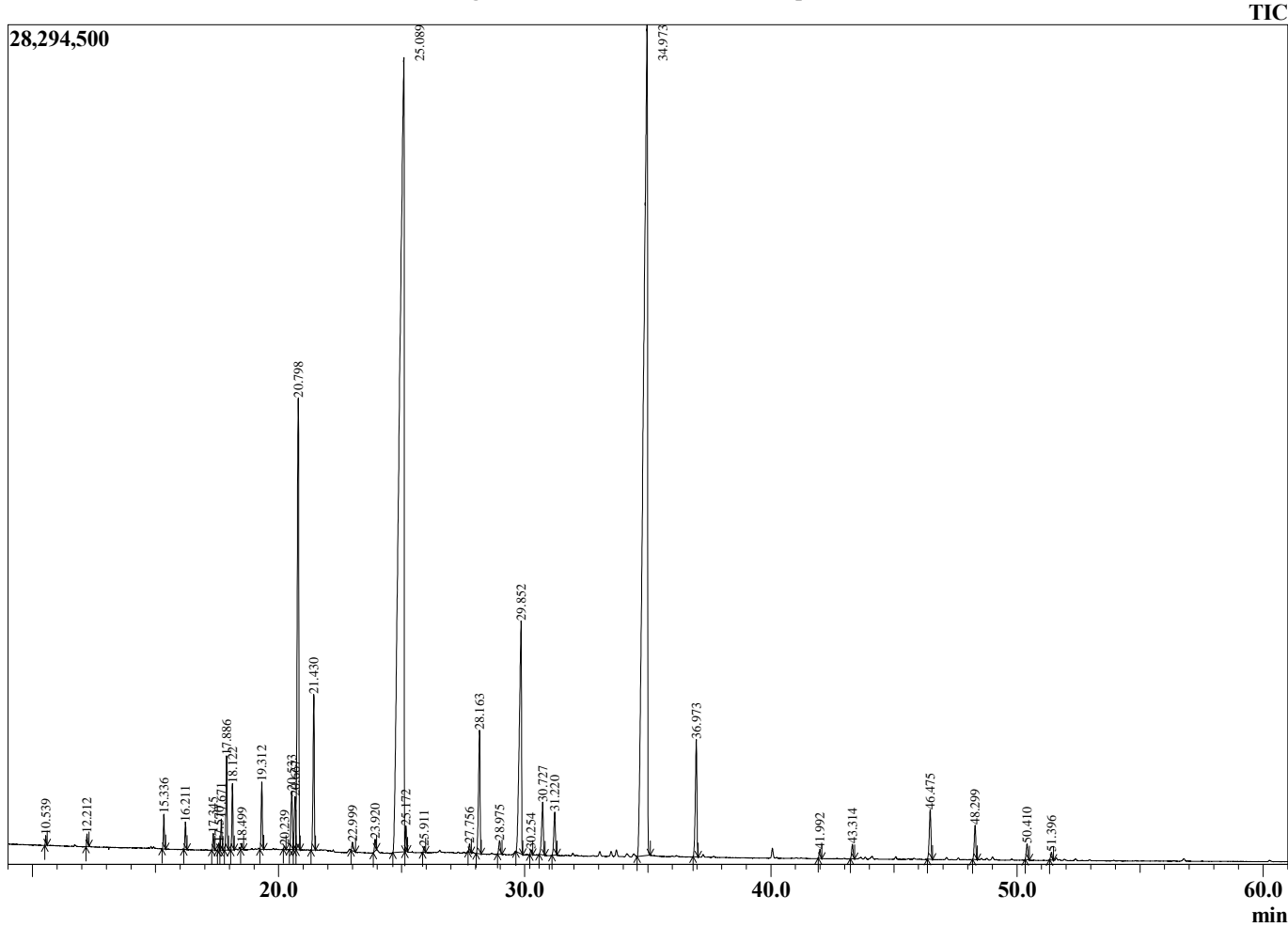


Analyzed by : Dr. Robert S. Pappas
Analyzed : 10/9/2012 1:42:40 PM
Sample Type : Essential Oil
Sample Name : Lavender Hill - Lavandin Super Oct 2012
Sample ID : Lavender Hill - Lavandin Super
Injection Volume : 0.10
Data File : C:\GCMSsolution\Data\EO Project\Lavender\LavHillLavandinSuperOCT2012.QGD

Sample Information



Chromatogram Lavender Hill - Lavandin Super Oct 2012



Peak Report TIC

R.Time	Name	Area%
3.936	Water	0.18
4.060	1-Butene, 3-methyl-	0.02
10.539	Hexane, 1-methoxy-	0.08
12.212	1-Hexanol	0.12
15.336	.alpha.-Pinene	0.35
16.211	Camphene	0.29
17.345	sabinene	0.18
17.570	1-Octen-3-ol	0.08
17.671	.beta.-Pinene	0.35
17.886	3-Octanone	1.06
18.122	myrcene	0.70
18.499	3-Octanol	0.07
19.312	hexyl acetate	0.78
20.239	p-cymene	0.04
20.533	D-Limonene	0.91
20.667	beta-phellandrene	0.74
20.798	1,8-cineole	7.18
21.430	trans-ocimene	1.95
22.999	cis-linalool oxide (furanoid)	0.13
23.920	Bicyclo[4.1.0]hept-2-ene, 3,7,7-trimethyl-	0.14
25.089	linalool	37.35
25.172	Octen-1-ol, acetate	0.28
25.911	3-Octanol, acetate	0.07
27.756	Propanoic acid, 2-methyl-, hexyl ester	0.09
28.163	camphor	1.91
28.975	lavandulol	0.21
29.852	Borneol	5.11
30.254	terpinen-4-ol	0.06
30.727	hexyl butyrate	0.87
31.220	p-menth-1-en-8-ol	0.68
34.973	linalyl acetate	33.93
36.973	lavandulyl acetate	1.83
41.992	neryl acetate	0.12
43.314	geranyl acetate	0.21
46.475	beta-caryophyllene	0.83
48.299	(Z)-beta-farnesene	0.51
50.410	germacrene D	0.24
51.396	2,6-Octadien-1-ol, 3,7-dimethyl-, propanoate,	0.11
62.747	.alpha.-Bisabolol	0.23
		100.00

Comments: The oil was very good quality for a lavandin. High ester content and relatively low camphor made for a very nice odor. No contamination or adulteration was detected.