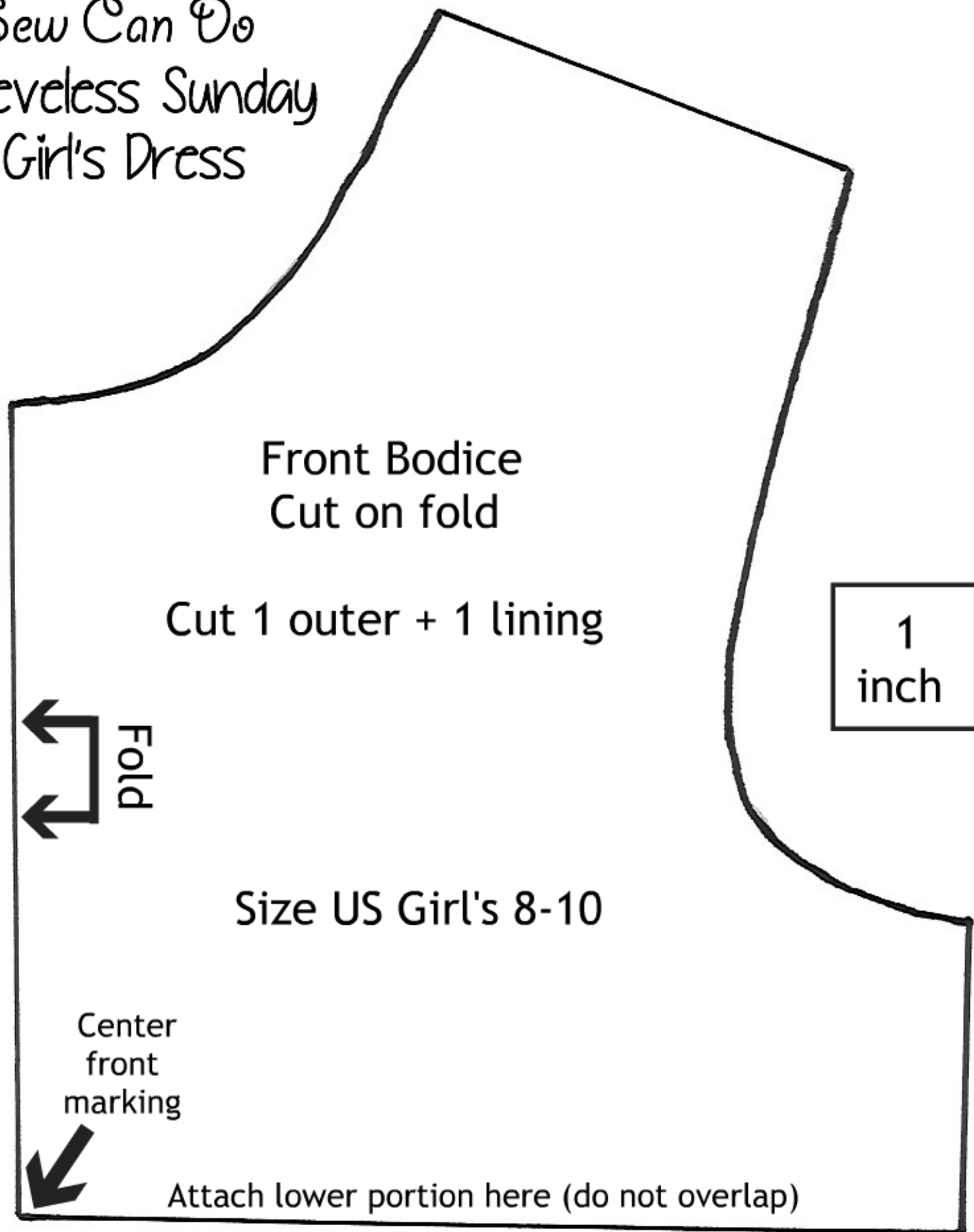


Sew Can Do
Sleeveless Sunday
Girl's Dress



Sew Can Do
Sleeveless Sunday
Girl's Dress

Back Bodice

From folded fabric
Cut 1 outer + 1 lining

Size US Girl's 8-10

Overlap here for
sewing halves



Attach pattern lower portion here (do not overlap)

Sew Can Do Sleeveless Sunday Girl's Dress

Attach to upper portion of Back Bodice here



Attach to upper portion of Front Bodice here