



The Pyramid Patterns

Patterns Using Eighths




R	L	etc...
L	R	etc...
R	R	etc...
L	L	etc...

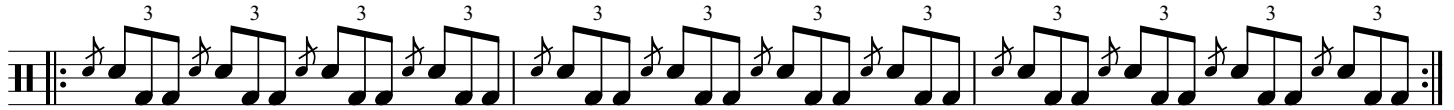
l R	r L	etc...
r L	l R	etc...
l R	l R	etc...
r L	r L	etc...

Patterns Using Triplets



R	L	etc...
L	R	etc...
R	R	etc...
L	L	etc...





l R	r L	etc...
r L	l R	etc...
l R	l R	etc...
r L	r L	etc...

Patterns Using Sixteenths



R	L	etc...
L	R	etc...
R	R	etc...
L	L	etc...



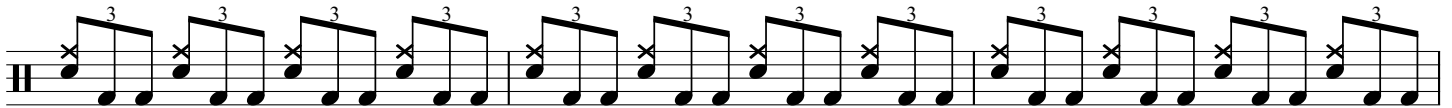
l R	r L	etc...
r L	l R	etc...
l R	l R	etc...
r L	r L	etc...



The Pyramid



R L etc
L R etc...
R R etc...
L L etc...





Staff 1: Drum notation with eighth notes and beams.



Staff 2: Drum notation with eighth notes and beams, including a '6' above the staff.



Staff 3: Drum notation with eighth notes and beams, including a '6' above the staff.



Staff 4: Drum notation with eighth notes and beams, including a '6' above the staff and 'x' marks.



Staff 5: Drum notation with eighth notes and beams, including a '6' above the staff and 'x' marks.



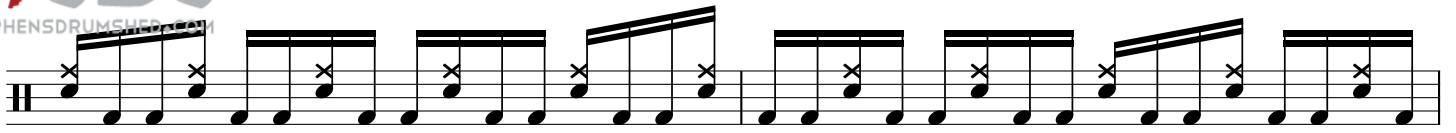
Staff 6: Drum notation with eighth notes and beams, including a '6' above the staff.



Staff 7: Drum notation with eighth notes and beams, including a '6' above the staff.



Staff 8: Drum notation with eighth notes and beams.



Staff 1: Drum notation on a five-line staff. It begins with a double bar line and a drum symbol. The notation consists of eighth notes with 'x' marks above them, indicating cymbal hits. The notes are grouped in pairs with slanted beams connecting them, and there are four such pairs per measure.



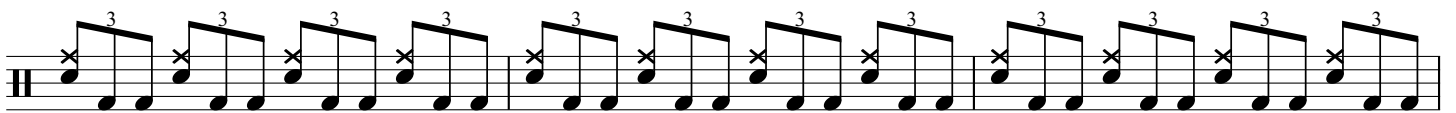
Staff 2: Drum notation on a five-line staff. It begins with a double bar line and a drum symbol. The notation consists of eighth notes with 'x' marks above them, indicating cymbal hits. The notes are grouped in pairs with slanted beams connecting them, and there are four such pairs per measure.



Staff 3: Drum notation on a five-line staff. It begins with a double bar line and a drum symbol. The notation consists of eighth notes with slanted beams connecting them in pairs, and there are four such pairs per measure.



Staff 4: Drum notation on a five-line staff. It begins with a double bar line and a drum symbol. The notation consists of eighth notes with slanted beams connecting them in pairs. Above each pair is a triplet bracket with the number '3' above it, indicating a triplet of eighth notes.



Staff 5: Drum notation on a five-line staff. It begins with a double bar line and a drum symbol. The notation consists of eighth notes with slanted beams connecting them in pairs. Above each pair is a triplet bracket with the number '3' above it, indicating a triplet of eighth notes. 'x' marks are placed above the first note of each pair.



Staff 6: Drum notation on a five-line staff. It begins with a double bar line and a drum symbol. The notation consists of eighth notes with slanted beams connecting them in pairs. Above each pair is a triplet bracket with the number '3' above it, indicating a triplet of eighth notes.



Staff 7: Drum notation on a five-line staff. It begins with a double bar line and a drum symbol. The notation consists of eighth notes with slanted beams connecting them in pairs. 'x' marks are placed above the first note of each pair.



Staff 8: Drum notation on a five-line staff. It begins with a double bar line and a drum symbol. The notation consists of eighth notes with slanted beams connecting them in pairs. 'x' marks are placed above the first note of each pair. The staff ends with a double bar line and repeat dots.