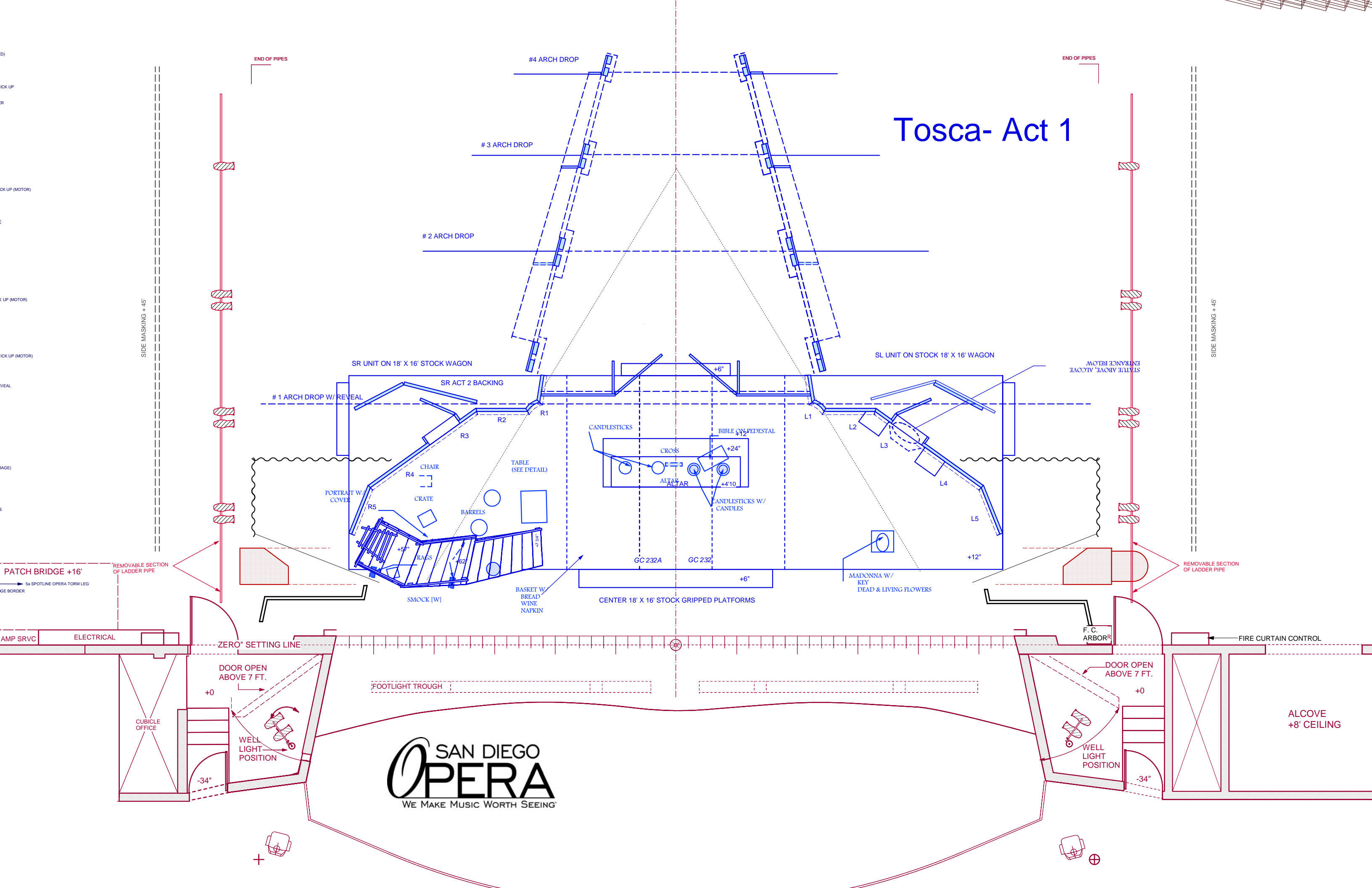








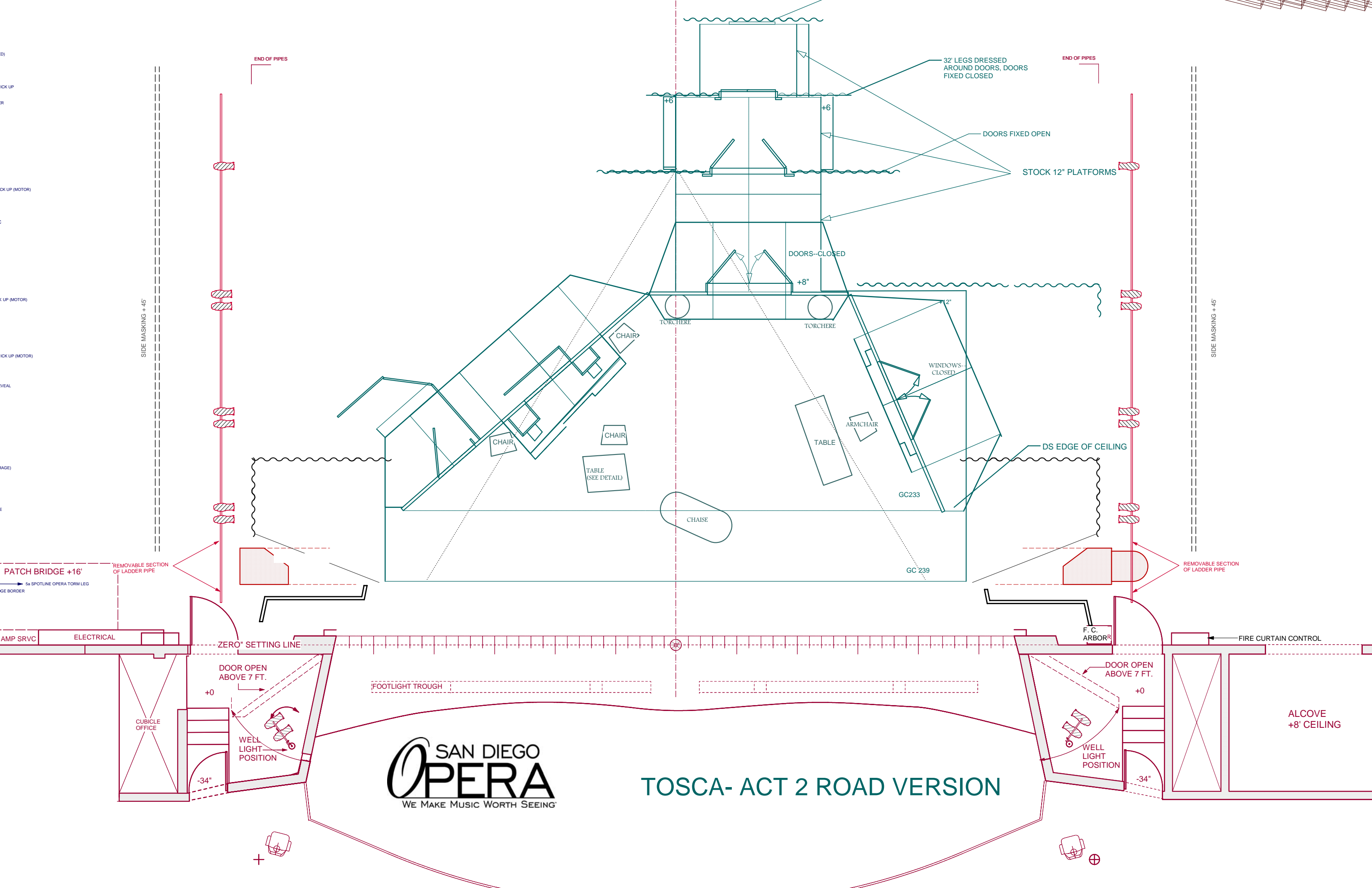
Tosca- Act 1





-- Away with that frightened manner.
-- I'm not in the least bit frightened.





END OF PIPES

END OF PIPES

32' LEGS DRESSED AROUND DOORS, DOORS FIXED CLOSED

DOORS FIXED OPEN

STOCK 12" PLATFORMS

DOORS-CLOSED

+8"

TORCHERE

TORCHERE

WINDOWS-CLOSED

DS EDGE OF CEILING

CHAIR

CHAIR

TABLE (SEE DETAIL)

TABLE

ARMCHAIR

CHAISE

GC233

GC 239

REMOVABLE SECTION OF LADDER PIPE

PATCH BRIDGE +16'

REMOVABLE SECTION OF LADDER PIPE

ZERO" SETTING LINE

F. C. ARBOR

FIRE CURTAIN CONTROL

DOOR OPEN ABOVE 7 FT.

+0

FOOTLIGHT TROUGH

DOOR OPEN ABOVE 7 FT.

+0

CUBICLE OFFICE

WELL LIGHT POSITION

-34"

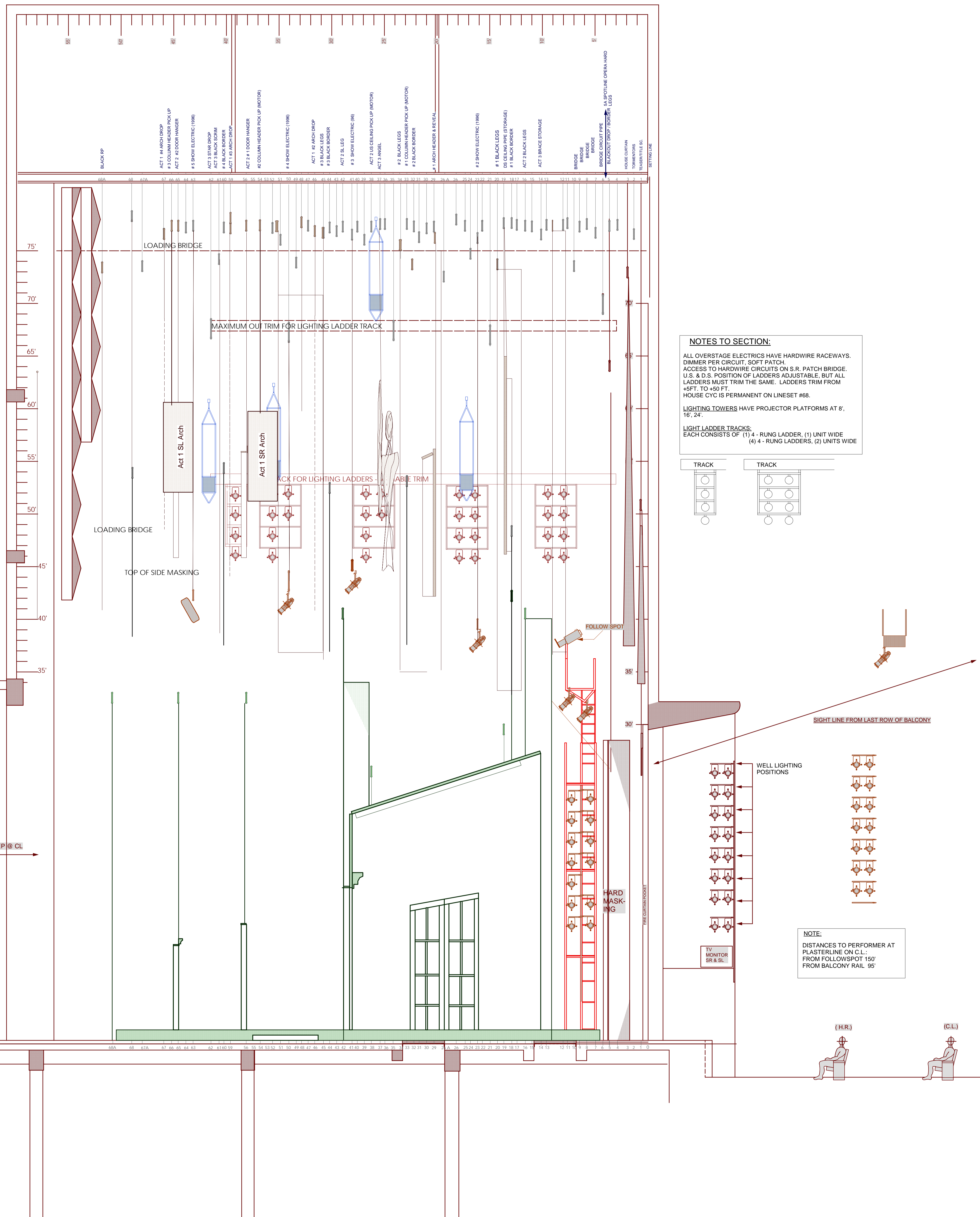
WELL LIGHT POSITION

-34"

ALCOVE +8' CEILING

SAN DIEGO OPERA
WE MAKE MUSIC WORTH SEEING

TOSCA- ACT 2 ROAD VERSION

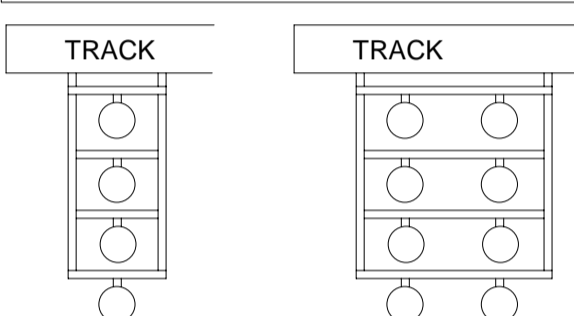


NOTES TO SECTION:

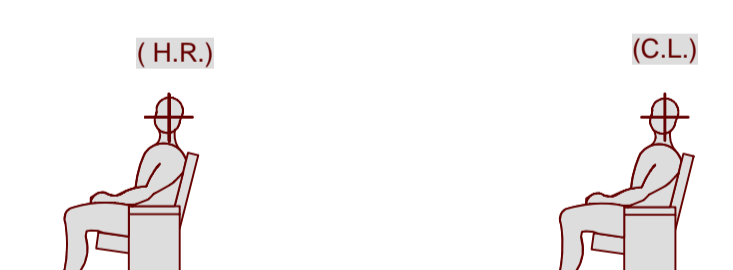
ALL OVERSTAGE ELECTRICS HAVE HARDWIRE RACEWAYS. DIMMER PER CIRCUIT - SOFT PATCH. ACCESS TO HARDWIRE CIRCUITS ON S.R. PATCH BRIDGE. U.S. & D.S. POSITION OF LADDERS ADJUSTABLE, BUT ALL LADDERS MUST TRIM THE SAME. LADDERS TRIM FROM HFT. TO 48" FT. HOUSE CYC IS PERMANENT ON LINESET #68.

LIGHTING TOWERS HAVE PROJECTOR PLATFORMS AT 8', 16', 24'.

LIGHT LADDER TRACKS. EACH CONSISTS OF (1) 4 - RUNG LADDER, (1) UNIT WIDE (4) 4 - RUNG LADDERS, (2) UNITS WIDE



NOTE:
DISTANCES TO PERFORMER AT PLASTERLINE ON C.L.:
FROM FOLLOWSPOT 150'
FROM BALCONY RAIL 95'



DIRECTED BY: IAN D. CAMPBELL
SCENERY BY: JEAN-PIERRE PONNELLE
LIGHTING BY: MARI E. BARRITT
PRODUCTION BY: JEAN-PIERRE PONNELLE

CIVIC THEATRE
SAN DIEGO, CA

TOSCA

ACT 2 SECTION

REVISED: 02/19/2002

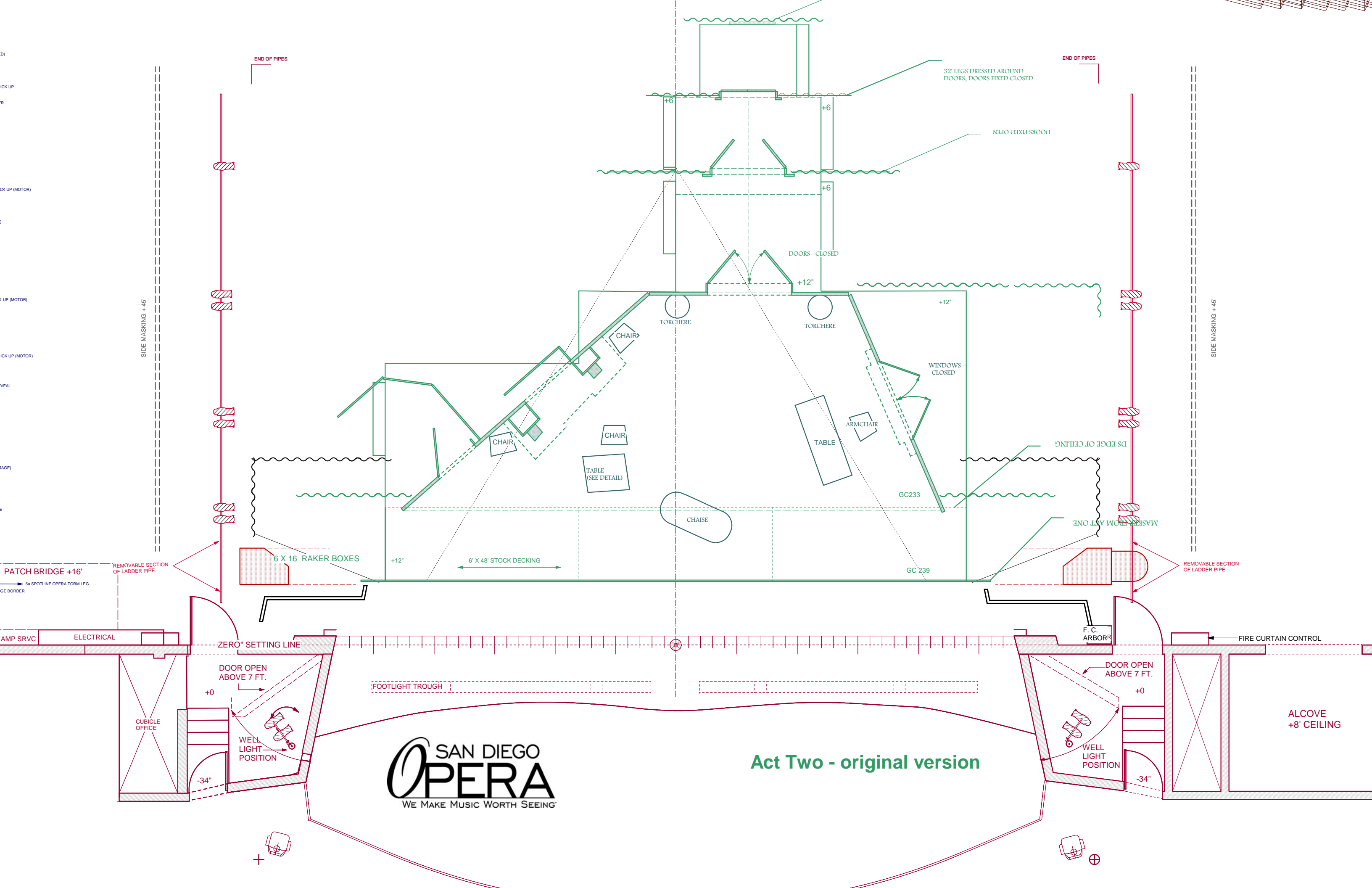
SCALE: 1/4" = 1'-0"

DATE: 7/10/2001

PAGE: 4 of 6

DIRECTOR OF PRODUCTION: RON ALLEN
PRODUCTION MANAGER: JOAN FOSTER
PRODUCTION STAGE MANAGER: MARY V. PETERS
PRODUCTION CARPENTER: JOHN DAVID PETERS
PRODUCTION ELECTRICIAN: J. ERIC KEEL

DRAWN: JTF



END OF PIPES

END OF PIPES

SIDE MASKING +45'

SIDE MASKING +45'

32' LEGS DRESSED AROUND DOORS, DOORS FIXED CLOSED

DOORS FIXED OPEN

DOORS--CLOSED

TORCHERE

TORCHERE

WINDOWS--CLOSED

CHAIR

CHAIR

TABLE (SEE DETAIL)

ARMCHAIR

TABLE

CHAISE

DS EDGE OF CEILING

MASKED FROM APT ONE

6 X 16 RAKER BOXES

6' X 48' STOCK DECKING

GC233

GC 239

REMOVABLE SECTION OF LADDER PIPE

PATCH BRIDGE +16'

REMOVABLE SECTION OF LADDER PIPE

ZERO' SETTING LINE

F. C. ARBOR

FIRE CURTAIN CONTROL

DOOR OPEN ABOVE 7 FT.

DOOR OPEN ABOVE 7 FT.

FOOTLIGHT TROUGH

CUBICLE OFFICE

WELL LIGHT POSITION

WELL LIGHT POSITION

ALCOVE +8' CEILING

SAN DIEGO OPERA
WE MAKE MUSIC WORTH SEEING

Act Two - original version

-34"

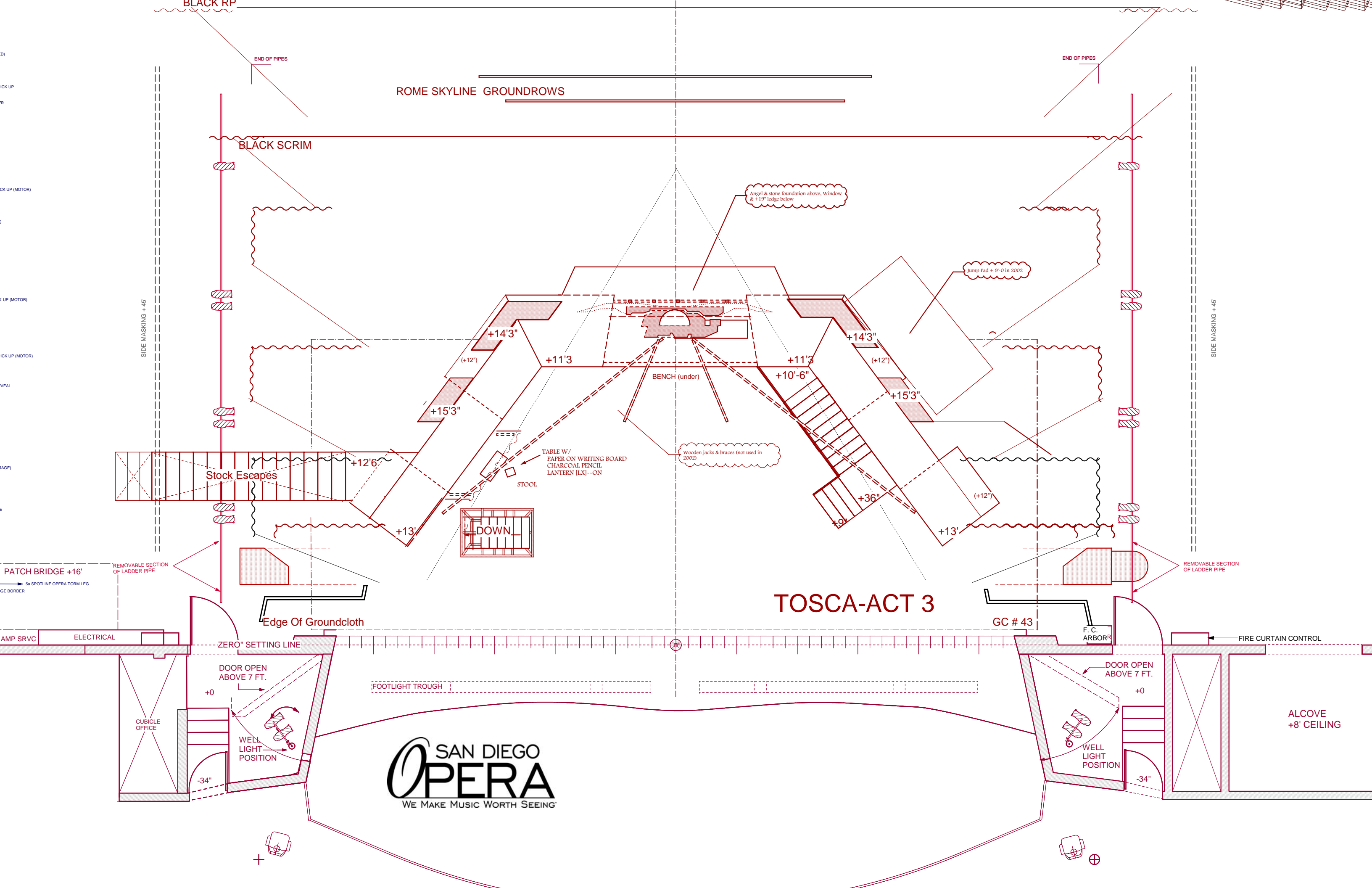
-34"











ROME SKYLINE GROUNDROWS

BLACK SCRIM

Angel & stone foundation above, Window & +19" ledge below

Jump Pad + 9'-0" in 2002

Wooden jacks & braces (not used in 2002)

TABLE W/
PAPER ON WRITING BOARD
CHARCOAL PENCIL
LANTERN (LX)--ON

STOOL

BENCH (under)

Stock Escapes

DOWN

TOSCA-ACT 3

GC # 43

F. C. ARBOR®

FIRE CURTAIN CONTROL

Edge Of Groundcloth

ZERO" SETTING LINE

DOOR OPEN ABOVE 7 FT.

+0

FOOTLIGHT TROUGH

DOOR OPEN ABOVE 7 FT.

+0

ALCOVE
+8' CEILING

WELL LIGHT POSITION

-34"

WELL LIGHT POSITION

-34"

SAN DIEGO
OPERA
WE MAKE MUSIC WORTH SEEING®



SIDE MASKING +45'

SIDE MASKING +45'

END OF PIPES

END OF PIPES

PATCH BRIDGE +16'

5a SPOTLINE OPERA TORM LEG

EDGE BORDER

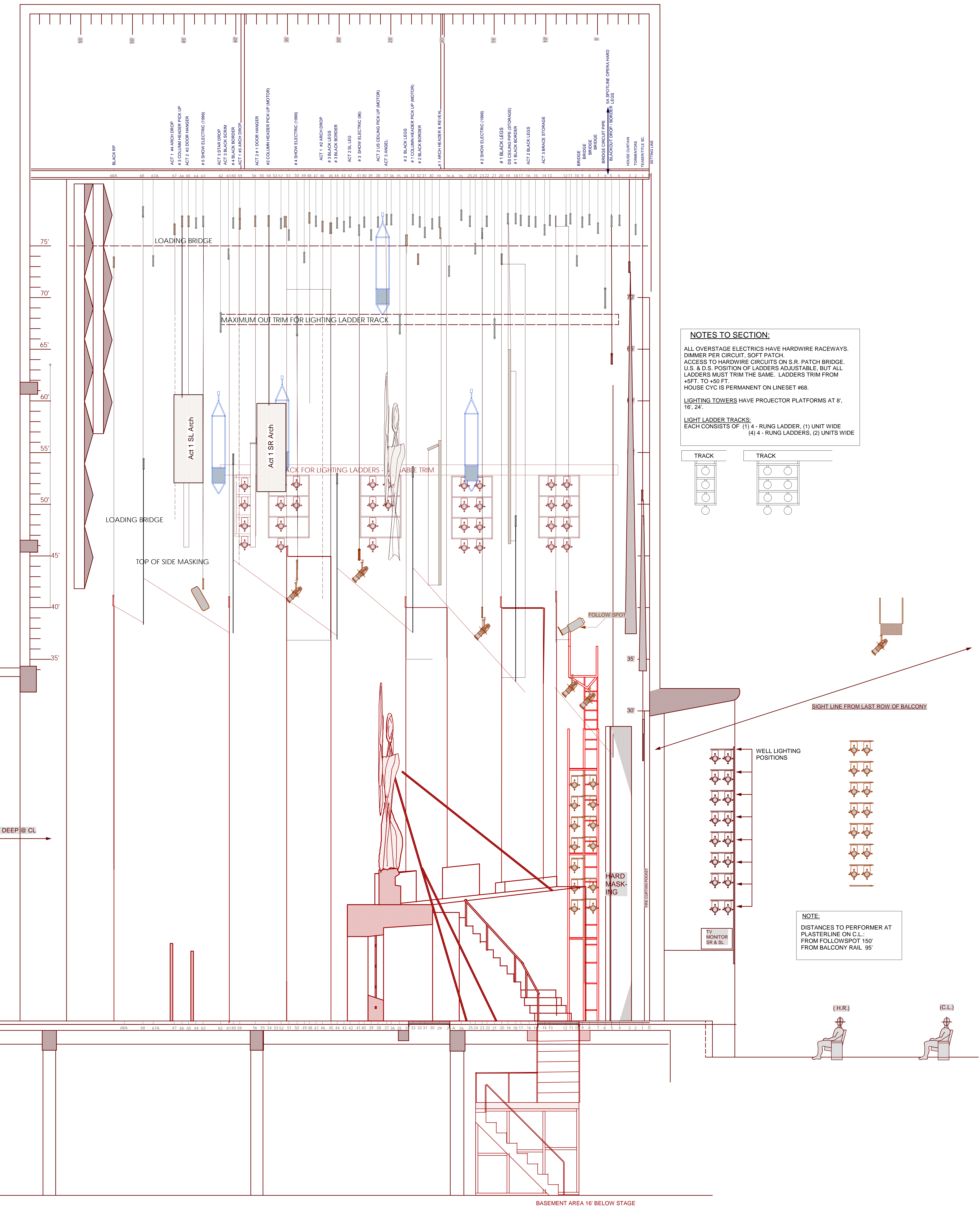
AMP SRVC

ELECTRICAL

CUBICLE OFFICE

+

+

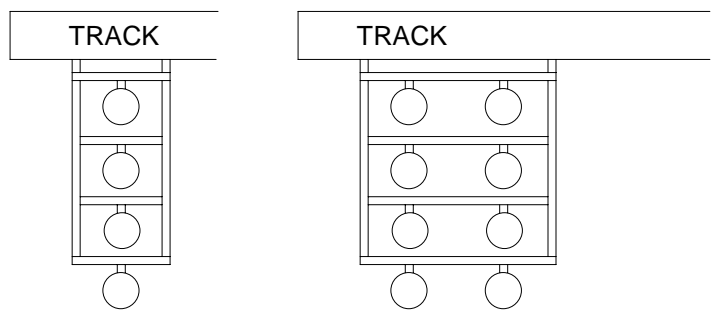


NOTES TO SECTION:

ALL OVERSTAGE ELECTRICS HAVE HARDWIRE RACEWAYS. DIMMER PER CIRCUIT. SOFT PATCH ACCESS TO HARDWIRE CIRCUITS ON S.R. PATCH BRIDGE. U.S. & D.S. POSITION OF LADDERS ADJUSTABLE, BUT ALL LADDERS MUST TRIM THE SAME. LADDERS TRIM FROM +5FT. TO +50 FT. HOUSE CYC IS PERMANENT ON LINESET #68.

LIGHTING TOWERS HAVE PROJECTOR PLATFORMS AT 8', 16', 24'.

LIGHT LADDER TRACKS: EACH CONSISTS OF (1) 4 - RUNG LADDER, (1) UNIT WIDE (4) 4 - RUNG LADDERS, (2) UNITS WIDE



NOTE:

DISTANCES TO PERFORMER AT PLASTERLINE ON C.L.: FROM FOLLOWSPOT 150' FROM BALCONY RAIL 95'



DIRECTED BY: IAN D. CAMPBELL
 SCENERY BY: JEAN-PIERRE PONNELLE
 LIGHTING BY: MARIE B. BARRETT
 PRODUCTION BY: JEAN-PIERRE PONNELLE

CIVIC THEATRE
SAN DIEGO, CA

TOSCA

ACT 3 SECTION

REVISED: 02/19/2002

SCALE: 1/4" = 1'-0"

DATE: 7/10/2001

PAGE: 4 of 6

DRAWN: JDP

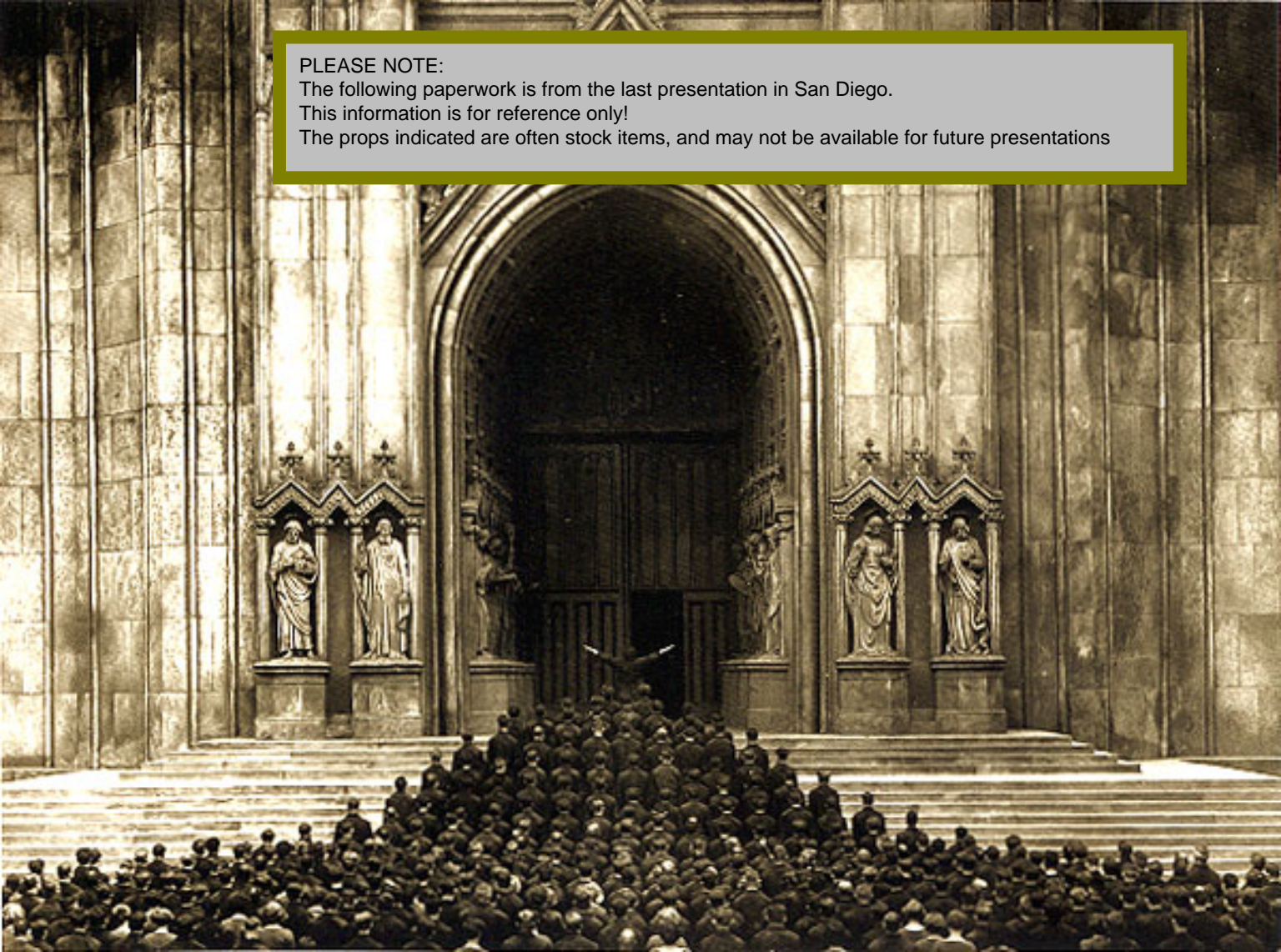
DIRECTOR OF PRODUCTION: RON ALLEN
 PRODUCTION MANAGER: JOAN FOSTER
 PRODUCTION STAGE MANAGER: MARY Y. PETERS
 PRODUCTION CARPENTER: JOHN DAVID PETERS
 PRODUCTION ELECTRICIAN: J. ERIC KEEL

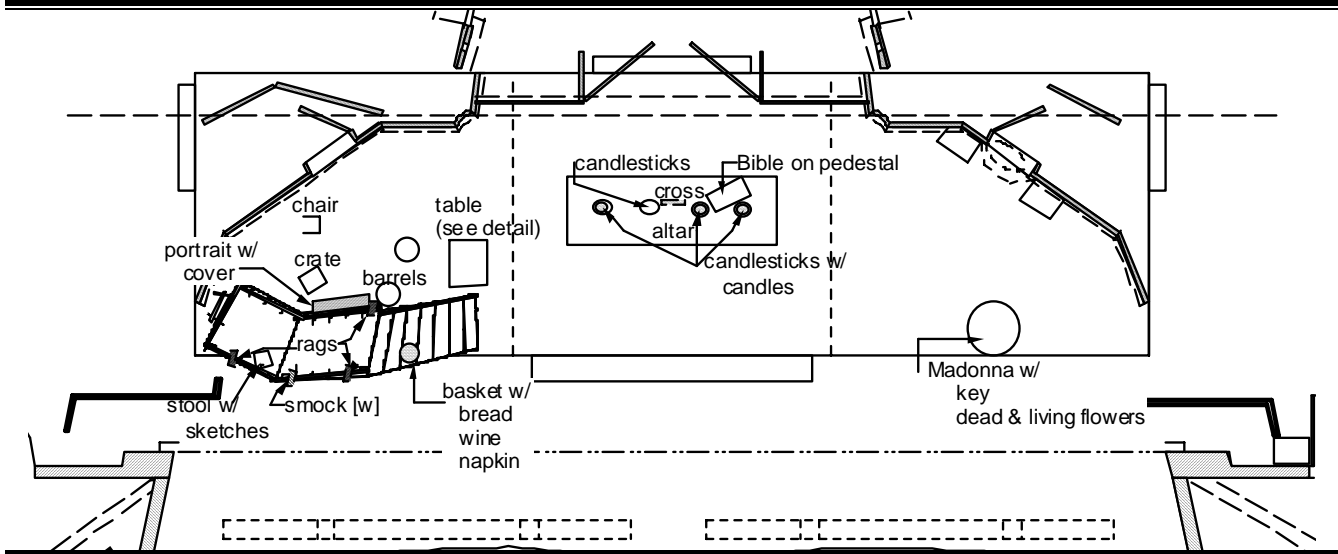
PLEASE NOTE:

The following paperwork is from the last presentation in San Diego.

This information is for reference only!

The props indicated are often stock items, and may not be available for future presentations





ACT 1 PRESET

STAGE RIGHT	ONSTAGE	STAGE LEFT
<ul style="list-style-type: none"> -skeleton key (Cavaradossi) -flowers (Tosca) -banda <ul style="list-style-type: none"> -1 stand w/ light -roving video monitor 	<ul style="list-style-type: none"> -altar w/ <ul style="list-style-type: none"> -3 candles on candlesticks -1 empty candlestick -Bible on pedestal -tall cross -Madonna w/ <ul style="list-style-type: none"> -"dead & living" flowers -big key (in font) (Angelotti) -table w/ (see detail) <ul style="list-style-type: none"> -tray w/ <ul style="list-style-type: none"> -10 paint pots -5 spoons -4 pestles -2 rustic water pitchers -2 medium paint brushes -paint box w/ handle w/ <ul style="list-style-type: none"> -5 big paint brushes -4 stacked bowls -portrait w/ cloth cover -stool w/ box & 4 large sketches -4 paint rags (on railings) -painter smock [W] (on railing) -basket w/ (on stairs) <ul style="list-style-type: none"> -bread -wine bottle (only thing poking out) -napkin (covering the bread) -wooden crate -2 wooden barrels (1 w/ 5 bamboo sticks) -wooden chair 	<ul style="list-style-type: none"> -1 candle for altar (super priest) -wooden bucket w/ (Sacristan) <ul style="list-style-type: none"> -cup w/4 sm. paint brushes -paint rag (Sacristan) -clothes bundle w/ (Angelotti) <ul style="list-style-type: none"> -skirt [W] -blouse [W] -shawl [W] -crop (Scarpia) -handkerchief [W] (Scarpia) -fan [W] (Scarpia)
<p>Dressing Rooms</p>		<p>Procession Props – Up Left</p>
<ul style="list-style-type: none"> -medallion on chain [W] (Cavaradossi) -ring [W] (Cavaradossi) -key ring on chain (Sacristan) 		<ul style="list-style-type: none"> -taper (Priest super) -15 music books (kids coro) -4 incense censors w/ <ul style="list-style-type: none"> -briquettes & incense -2 crooks (Bishop supers) -6 halberds (Swiss Guard supers) -Baldachin (4 supers) -Monstrance (Cardinal super) -2 tall crosses (Priest supers) -banda: <ul style="list-style-type: none"> -chime rack -bass drum -6 stands w/ lights -roving video monitor -2 chairs -keyboard w/light

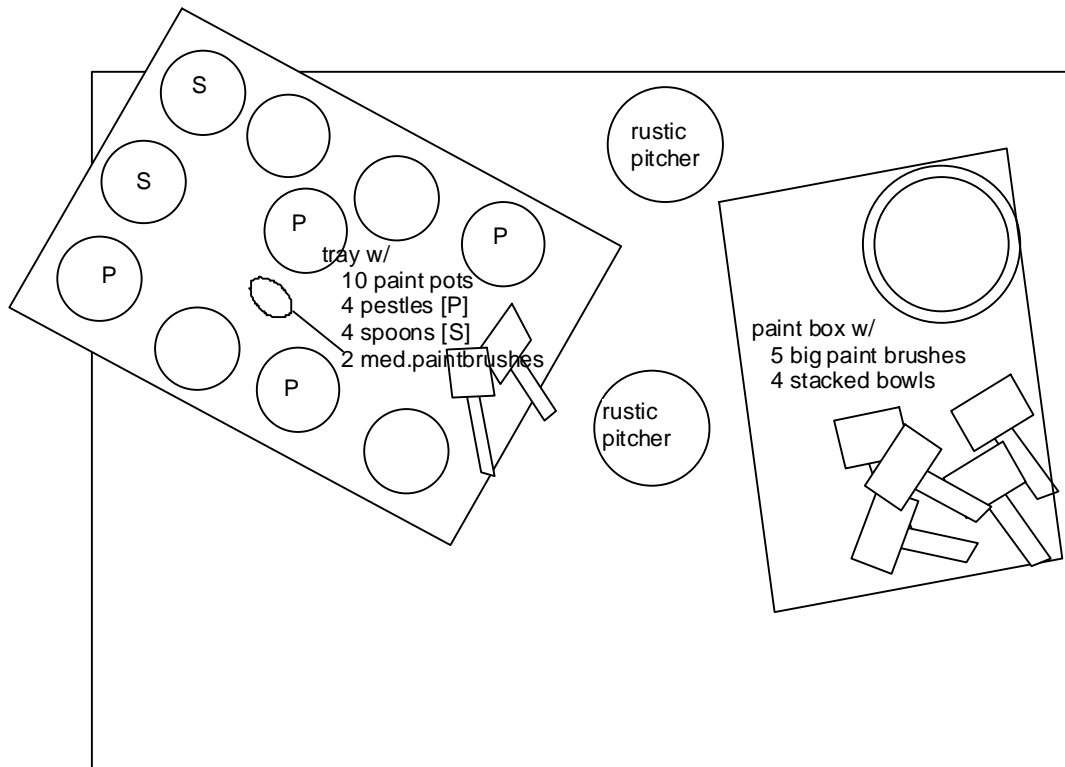
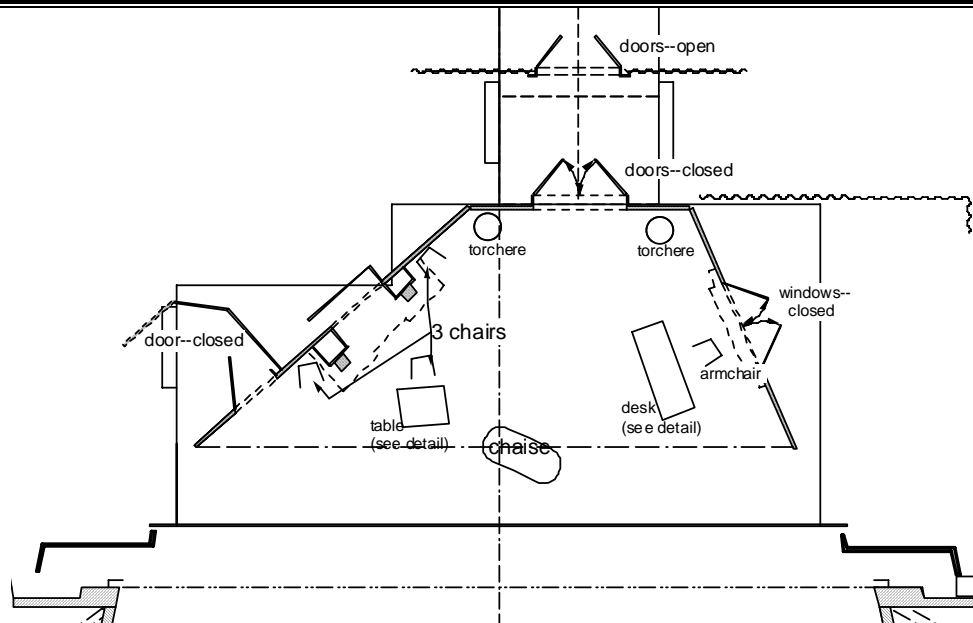


Table--Upstage

RUNNING NOTES

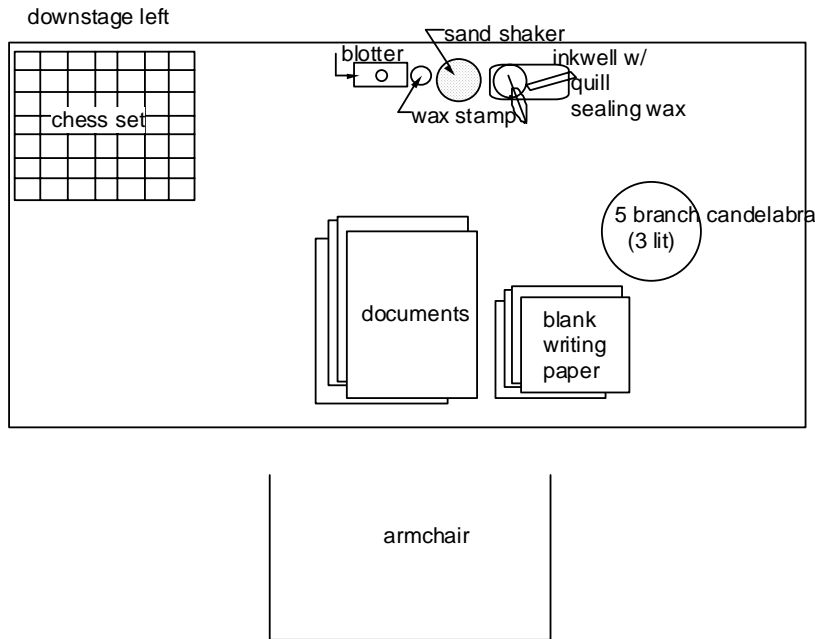
TIME (PG. #)	WHERE	WHAT
Act 1 (45:45)		
11:10 (p. 35)	Stage Left Door	RECEIVE basket from Angelotti. EMPTY basket of everything except napkin.
27:00 (p. 78)	Stage Left Door	RECEIVE key from Angelotti HANDOFF skirt, blouse, shawl to Angelotti.
31:00 (p. 98)	Stage Left Door	RECEIVE crop from Scarpia HANDOFF fan to Scarpia.
31:40 (p. 100)	Stage Left Door	HANDOFF basket w/ napkin to Spoletta
32:00 (p. 101)	Up Stage Left	LIGHT briquettes for incense.
41:00 (p. 128)	Up Stage Left	LIGHT taper



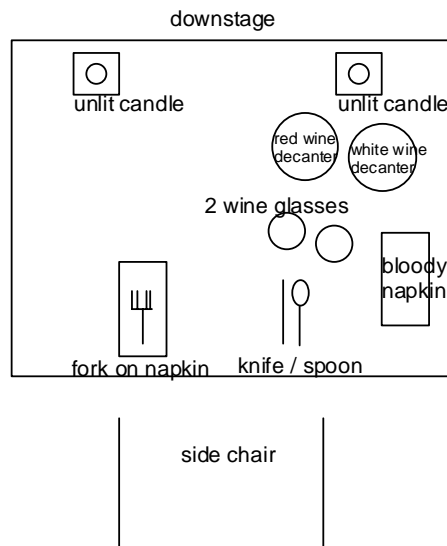
ACT 2 PRESET

STAGE RIGHT	ONSTAGE	STAGE LEFT
<ul style="list-style-type: none"> -charger w/ -plate of chicken w/knife -Door knock (hammer) -2 roving video monitors 	<ul style="list-style-type: none"> -desk w/ (see detail) -1 5-branch candelabra (3 lit) -sealing wax -inkwell w/ quill -sand shaker -sealing stamp -blotter -documents -blank writing paper -chess set -armchair -3 side chairs -dinner table w/ (see detail) <ul style="list-style-type: none"> -tablecloth -napkin (flameproof) -fork -dinner knife -spoon -bloody napkin -2 wine glasses -2 wine decanters (1 red, 1 white) -2 candles (unlit) -chaise -2 torchere (lit) 	<ul style="list-style-type: none"> -folio w/ papers (spy) -folio w/ paper (Judge) -ring [W] – repeat (Cavaradossi) -Banda <ul style="list-style-type: none"> -2 chairs -stool -harp -mic -6 stands w/ lights -2 snare drums

Act 2 Desk Detail

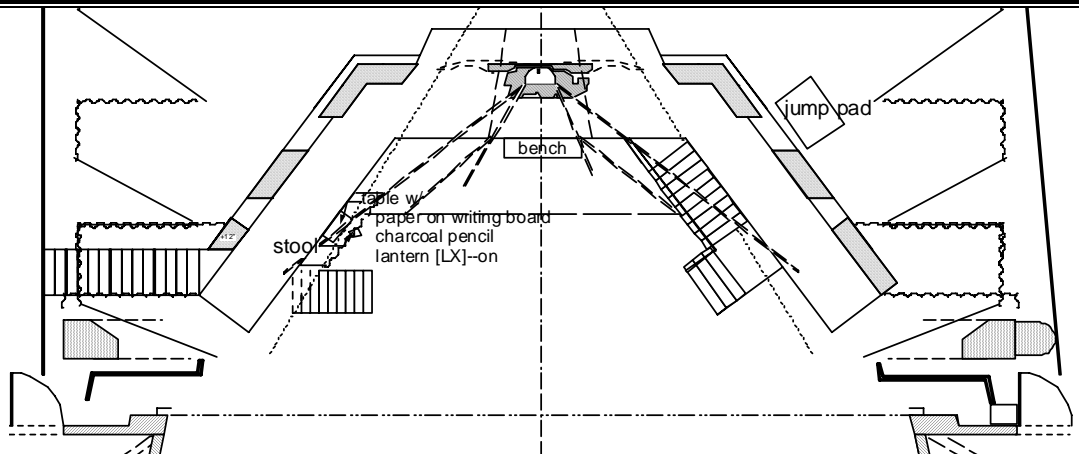


Act 2 Table Detail



RUNNING NOTES

TIME (PG. #)	WHERE	WHAT
Act 2 (40:25)		
0:00	Preset	All onstage candles lit just before curtain out. (except 2 on desk candelabra & 2 on table)
31:50 (p. 251)	UC Door	KNOCK



ACT 3 PRESET

STAGE RIGHT	ONSTAGE	STAGE LEFT
-2 non-firing rifles w/ bayonets -banda: -tam -1 stand w/ light -roving video monitor -chime rack	-jump pad on platform -ladder -table w/ -writing board w/ -paper -charcoal pencil -lantern [LX]---on -seal	-no props -banda: -chime rack -3 stands w/ lights -1 stand w/ no light -keyboard w/ light -herd bells -chair
TRAP		Stage Left Organ Loft
-4 practical rifles (Soldier supers) -2 non-firing rifles (Soldier supers) -sword (Officer) -pistol (Officer) -hand lantern [LX] (Officer) -safe passage document – repeat from Act 2 (Tosca) -black blindfold (Officer) -rope for wrists (Cavaradossi) -ring [W] –repeat (Cavaradossi) -document (Officer)	-stool -bench	-video monitor -stand w/ light

RUNNING NOTES

TIME (PG. #)	WHERE	WHAT
Act 3 (26:30)		
13:05 (p. 295)	Stage Right Trap	LOAD 4 rifles
25:50 (p. 335)	Stage Left Crash Mat	SPOT & ASSIST in jump & down ladder

#	Prop	Description	Source
1	altar	Tall, long stone-looking altar. The underneath is open.	SDO
1	runner	Lace runner for altar.	SDO
4	candles w/ candlesticks	Big, tall candlesticks for altar w/ big white pillar candles.	SDO
1	Bible on pedestal	Big ledger book open on a wooden lectern that sits on the altar.	SDO
1	tall cross	Very tall cross that attaches to the altar US.	SDO
1	Madonna w/	Madonna statue w/ font on pedestal and also a ledge for flowers.	SDO
1 bunch	"dead" flowers	Brown, crusty looking fake flowers.	SDO
1 bunch	"living" flowers	Nice, colorful bunch of fake flowers.	SDO
1	big key	Big brass key "for SL door" hidden in font.	SDO
1	table	Small to medium sized rustic, brown wooden square table.	SDO
1	tray	Brown wooden tray (just sits on table)	SDO
10	paint pots	An assortment of brown wooden and leather cups.	SDO
5	spoons	Regular teaspoons.	SDO
5	pestles	Wooden pestles.	SDO
2	rustic water pitchers	Metal pitchers.	SDO
2	medium paint brushes		SDO
1	paint box w/ handle w/	Brown wooden - tool box style. Wood slats, not solid on sides.	SDO
5	big paint brushes		SDO
4	4 stacked bowls	Small wooden bowls.	SDO
1	portrait w/ cloth cover	Large canvas painting of woman, incomplete – large piece of muslin covering.	SDO
1	stool	Basic wooden stool.	SDO
1	box	Wooden box (used on top of stool so that Mr. Leech could easily reach the sketches that were preset on top of the stool).	SDO
4	large sketches	Basic charcoal sketches of women.	SDO
5	paint rags	Muslin rags w/ some paint on them.	SDO
1	painter smock	Wardrobe item. Cavaradossi	SDO
1	basket	Large-ish basket w/ handle.	SDO
1	Baguette	fake	SDO
1	wine bottle	Standard – green w/ cork	SDO
1	napkin	White linen napkin.	SDO
1	wooden crate	Basic wooden crate—set dressing.	SDO
2	wooden barrels	Smallish barrels—set dressing.	SDO
5	bamboo sticks	Tall bamboo sticks in a barrel—set dressing.	SDO
1	wooden chair	w/caned seat.	SDO
1	skeleton key	Dark & large	SDO
1	medallion on chain	Wardrobe item. Cavaradossi	SDO
1	ring	Wardrobe item. Cavaradossi	SDO
1	flowers	Bouquet of colorful fake flowers (added to Madonna)	SDO
1	wooden bucket	w/ rope handle	SDO

Version: FINAL

1	cup w/4 sm. paint brushes	Wooden cup w/ long, narrow paintbrushes...in wooden bucket.	SDO
1	key ring on chain	Large ring of keys on chain attached to Sacristan's costume.	SDO
1	clothes bundle	Skirt, blouse, shawl. Wardrobe items.	SDO
1	crop	Black	SDO
1	handkerchief	Wardrobe item. Scarpia	SDO
1	fan	Black lace fan	SDO
1	taper w/ brass snuffer	Brass taper candle w/ snuffer.	SDO
15	music books	Gray, hard music folders.	SDO
4	incense censors	Big silver censors...practical.	SDO
4	briquettes & incense	Practical.	SDO
2	crooks	Funky gold spiral thing on top of black poles, approx. 8' tall.	SDO
6	halberds	Approx. 6' tall.	SDO
1	Baldachin	Yellow & gold, fringe around top, polse approx. 6'tall, canopy approx. 3' wide.	SDO
1	Monstrance	Fancy box.	SDO
2	tall crosses	Crosses on tall poles.	SDO
1	desk	Approx. 6' long & 3' wide.	SDO
1	5-branch candelabra	Big, heavy metal, fancy.	SDO
1	sealing wax	Basic red sealing wax.	SDO
1	inkwell w/ quill	Brass, white quill.	SDO
1	sand shaker	Gold painted wood.	SDO
1	sealing stamp	Separate chess piece w/ stamp on bottom.	SDO
1	blotter	Gold painted wood.	SDO
Pile	documents	Miscellaneous	SDO
3	blank writing paper	Smaller, blank parchment paper.	SDO
1	chess set	Standard to fit set, slightly elevated.	SDO
1	armchair	w/ black upholstery	SDO
3	side chairs	w/ black upholstery	SDO
1	dinner table	Small rectangular table covered w/ brocade tablecloth.	SDO
1	tablecloth	Brocade, matches chairs.	SDO
1	napkin	White, linen -- flameproof	SDO
1	fork	Standard	SDO
1	dinner knife	Standard	SDO
1	spoon	Standard	SDO
1	bloody napkin	White linen napkin stained w/ "blood" folded so blood is not seen.	SDO
2	wine glasses	Standard -- glass	SDO
2	wine decanters	Small, matching glass wine decanters--1 w/ "red wine", 1 w/ "white wine"	SDO
2	candles	2 single candlesticks w/ white dinner candles.	SDO
1	chaise	Purple / black upholstery.	SDO
2	torchere	Tall w/ white pillar candles.	SDO
1	charger	Standard -- round, metal, silver	SDO
1	plate of chicken w/knife	Practical roasted chicken w/ "the knife" -- rustic looking w/ curved tip.	SDO
1	Door knock	Used handle of hammer on back of set wall UC.	SDO

Version: FINAL

1	folio w/ papers	Red velvety folio w/ various parchment paper documents.	SDO
1	folio w/ paper	Brown vinyl-like folio w/ 1 parchment document	SDO
1	jump pad on platform	Covered w/ black fabric.	SDO
1	ladder	To get Tosca off of jump pad.	SDO
1	table	Very small rustic wooden table.	SDO
1	writing board	Basically a brown wooden tray.	SDO
?	paper	Parchment documents	SDO
1	charcoal pencil		SDO
2	lanterns	Battery powered, black metal.	SDO
1	seal	Small square block of wood.	SDO
1	stool	Basic square wooden stool.	SDO
1	bench	6' wooden bench	SDO
8	non-firing rifles w/ bayonets	4 practical (¼ black load), 4 are non-firing—2 of these w/ bayonets. 45/70 gov. All were rented from ISS in L.A.	ISS
1	sword	Period.	SDO
1	pistol	Not practical	SDO
1	safe passage document	Parchment document repeat from Act 2.	SDO
1	black blindfold	Strip of black fabric.	SDO
1	rope for wrists	Tied into rope handcuffs	SDO
1	document	Parchment document used by super officer.	SDO