





















TANNAHAUSER

ACT 1-3 SECTION (SR)

DATE: FINAL 2008

SCALE: 1/4"=1'-0"

REVISED: 02/15/2008

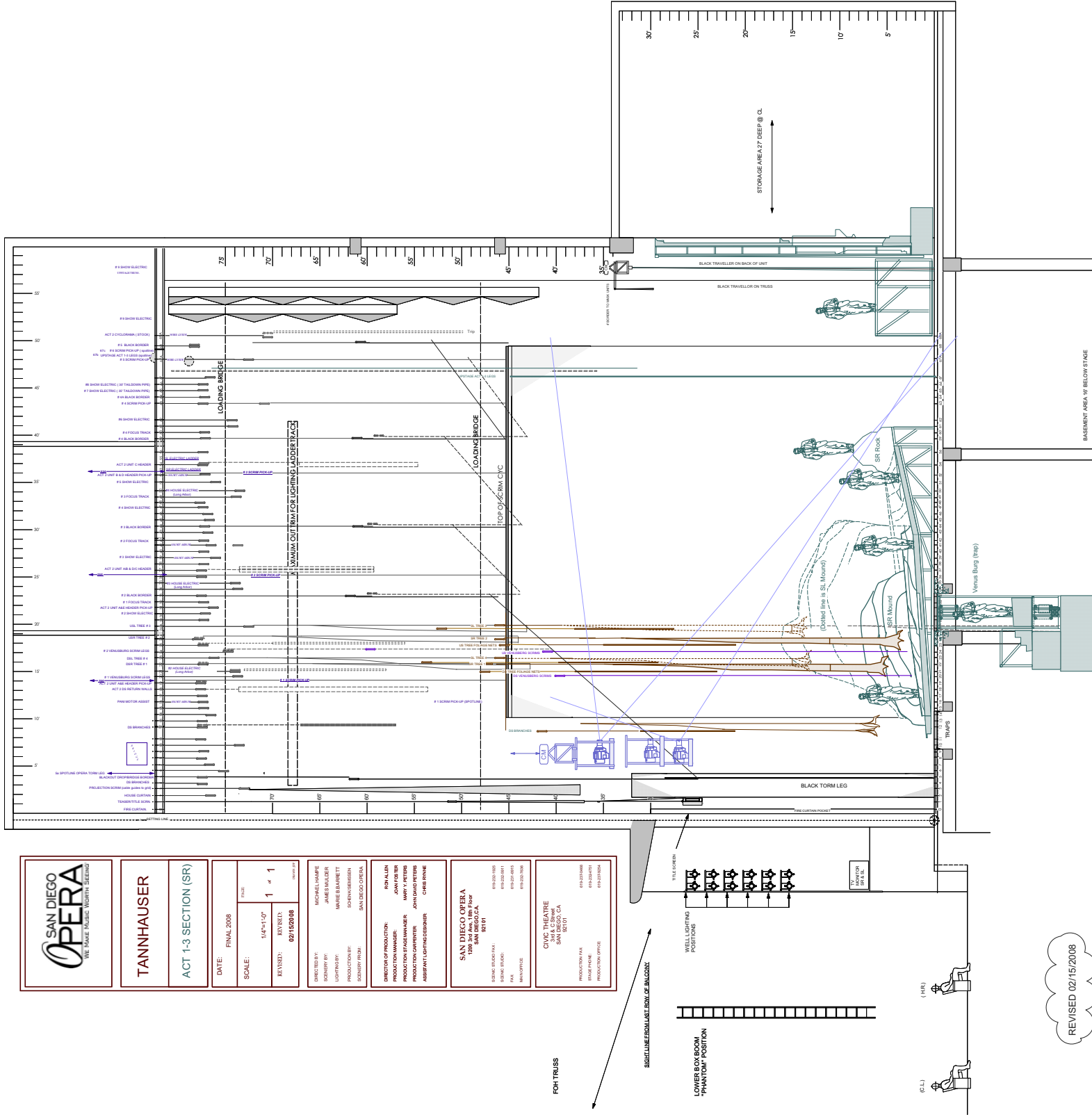
DIRECTED BY: MICHAEL HAMPE  
SCENERY BY: JAMES MALLER  
LIGHTING BY: MARIE BARRETT  
PRODUCTION BY: SORENSENSEN  
SCENERY FROM: SAN DIEGO OPERA

DIRECTOR OF PRODUCTIONS: ROX ALLEN  
PRODUCTION MANAGER: JOYCE  
PRODUCTION STAGE MANAGER: MARY F. PETERS  
PRODUCTION OPERATOR: JOHN DAVID PETERS  
ASSISTANT LIGHTING DESIGNER: CHRIS RYRNE

SAN DIEGO OPERA  
1000 3rd Ave. 19th Floor  
SAN DIEGO, CA 92101

SENIOR DESIGNER: CHRIS RYRNE  
DESIGNER: CHRIS RYRNE  
FAK: MARY PETERS

CIVIC THEATRE  
SAN DIEGO, CA 92101  
PRODUCTION FAK: CHRIS RYRNE  
STAGE PHONE: 619-594-7171  
PRODUCTION OFFICE: 619-594-7224



REVISED 02/15/2008

TANNAHAUSER

SECTION VIEW ACT 1/3 (TO STAGE RIGHT)

SCALE: 1/4" = 1'-0"

MAX LOW

SECTION VIEW ACT 1/3 (TO STAGE RIGHT)

**NOTES TO PLAN**

- ALL PIPES ARE 70" LONG EXCEPT HOUSE CURTAIN, WHICH IS 60"
- LINESSET CAPACITY IS 1750 LBS, EXCEPT 18, 39, 41, 52, 64. THEIR CAPACITY IS 1400 LBS
- LINESSETS 59A, 7A, 8A ARE WIRE GUIDE SETS NOT SUITABLE FOR HEAVY LOADS

**SR & SL SIDE LADDER ELECTRICS**

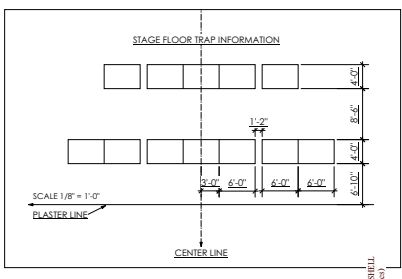
- LADDERS ARE RIGGED IN A TRACK THE TRACK FLYS

**AVAILABLE LADDERS**

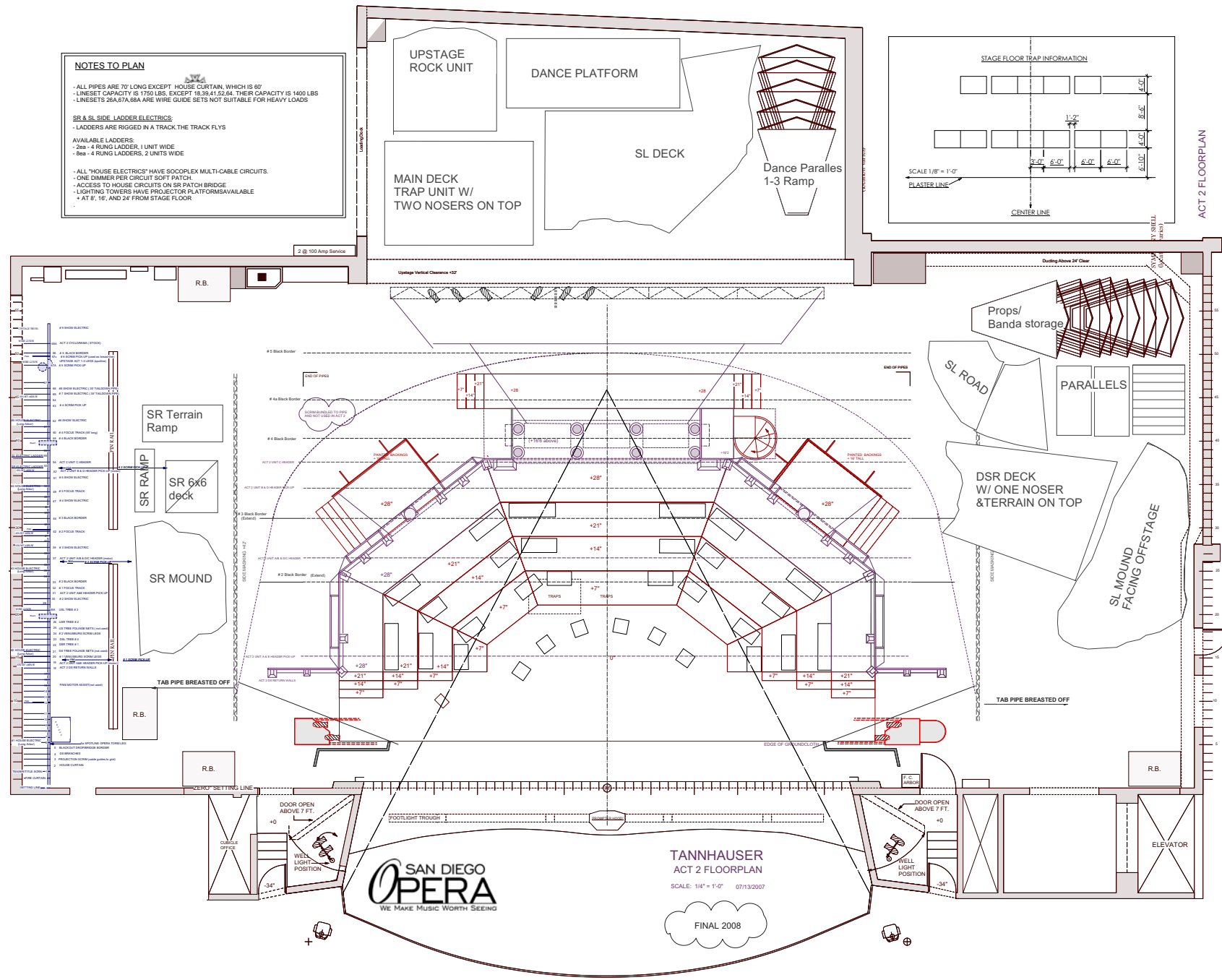
- 2ea - 4 RUNG LADDERS, 1 UNIT WIDE
- 8ea - 4 RUNG LADDERS, 2 UNITS WIDE

- ALL "HOUSE ELECTRICS" HAVE SOCORPLEX MULTI-CABLE CIRCUITS.

- ONE DIMMER PER CIRCUIT SOFT PATCH.
- ACCESS TO HOUSE CIRCUITS ON SR PATCH BRIDGE
- LIGHTING TOWERS HAVE PROJECTOR PLATFORMS AVAILABLE
- AT 8', 16', AND 24' FROM STAGE FLOOR



ACT 2 FLOORPLAN



**SAN DIEGO OPERA**  
WE MAKE MUSIC WORTH SEEING

**TANNHAUSER**

ACT 2 FLOORPLAN

DATE: FINAL 2008

SCALE: 1/4"=1'-0" PAGE: 1 of 1

REVISED: 02/15/2008

DESIGNED BY: MICHAEL HAMPE  
SCENERY BY: JAMES MULDER  
LIGHTING BY: MARIE B BARRETT  
PRODUCTION BY: SCENARIOS/STAGES  
SCENERY FROM: SAN DIEGO OPERA

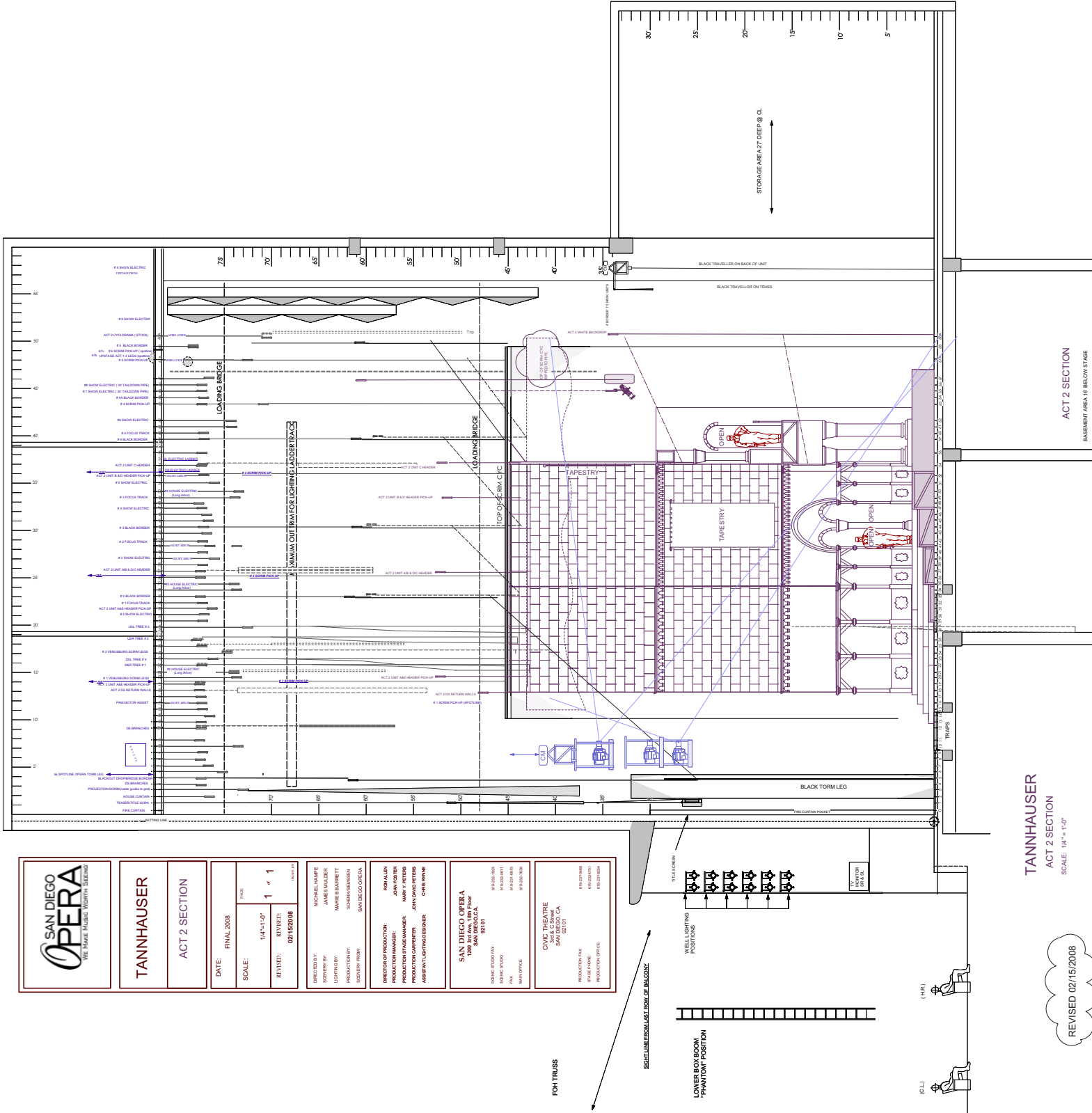
DIRECTOR OF PRODUCTION: RON ALLEN  
PRODUCTION MANAGER: JOHN FOSTER  
PRODUCTION STAGE MANAGER: MARY V. PETERS  
PRODUCTION CARPENTER: JOHN DAVID PETERS  
ASSISTANT LIGHTING DESIGNER: CHRIS RYNE

**SAN DIEGO OPERA**  
1200 3rd Ave, 18th Floor  
SAN DIEGO, CA 92101

MANAGER: 619-232-7536  
FAX: 619-231-6810  
SCENIC STUDIO: 619-232-5811  
SCENIC STUDIO FAX: 619-232-7535

**CIVIC THEATRE**  
3rd & C Street  
SAN DIEGO, CA 92101

PRODUCTION OFFICE: 619-231-6258  
STAGE MANAGER: 619-232-5811  
PRODUCTION FAX: 619-232-6888



**TANNAHAUSER**  
ACT 2 SECTION  
SCALE: 1/4" = 1'-0"

REVISED 02/15/2008

FOH TRUSS

SCALE LINE FROM LAST ROW OF BALCONY

LOWER BOY ROOM  
"PHANTOM" POSITION

TILE CORNER

WELL LIGHTING POSITIONS

TO MANIPULATOR

(C-L)

(H-R)

**NOTES TO PLAN**

- ALL PIPES ARE 70' LONG EXCEPT HOUSE CURTAIN, WHICH IS 60'
- LINESET CAPACITY IS 1750 LBS. EXCEPT 18,39,41,52,64. THEIR CAPACITY IS 1400 LBS
- LINESETS 59A,57A,60A ARE WIRE GUIDE SETS NOT SUITABLE FOR HEAVY LOADS

**SR & SL SIDE LADDER ELECTRICS**

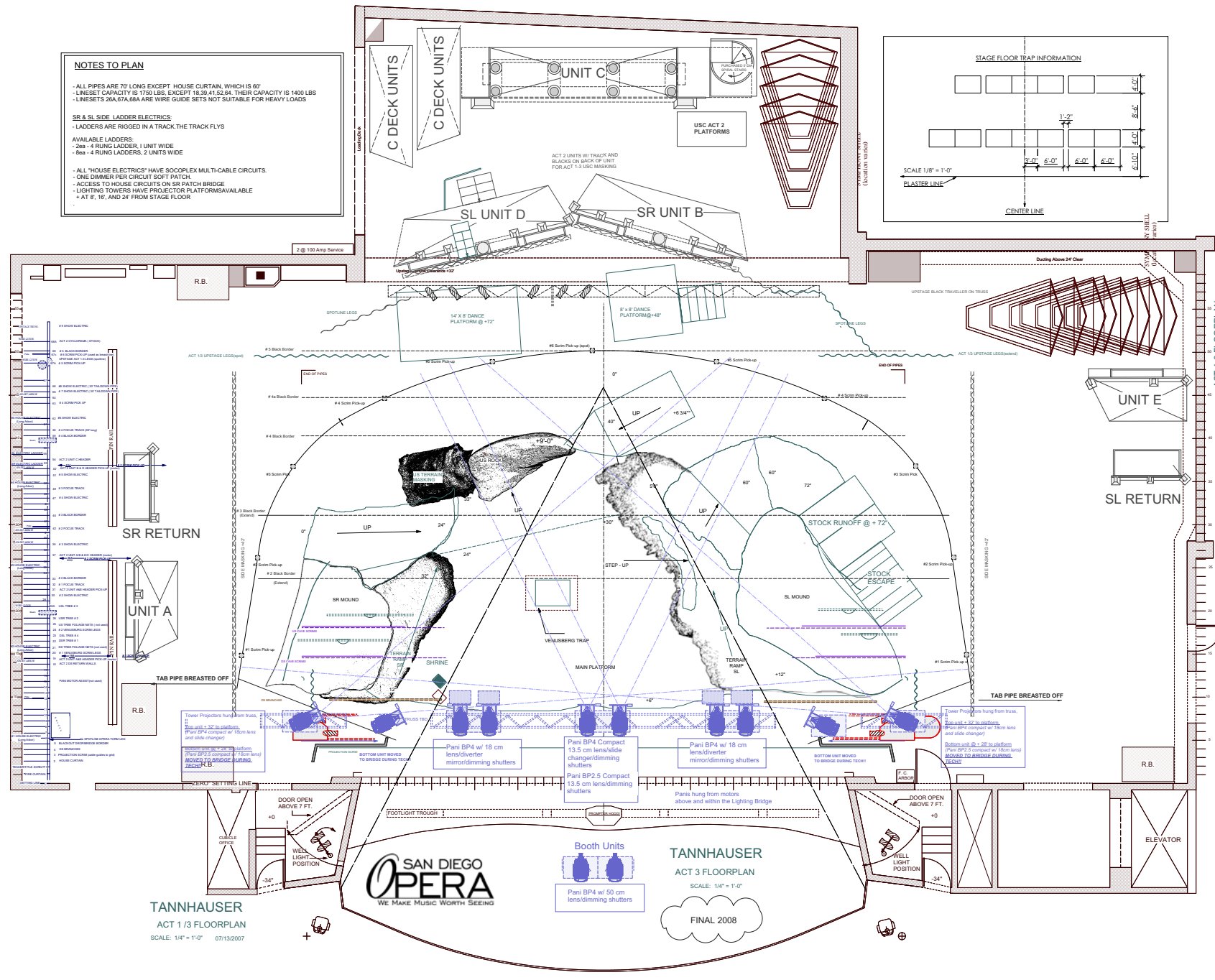
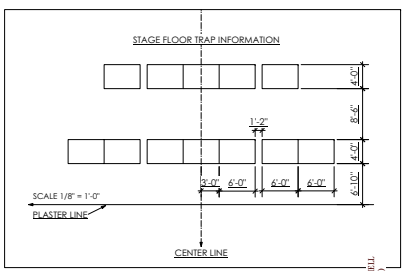
- LADDERS ARE RIGGED IN A TRACK, THE TRACK FLIES

**AVAILABLE LADDERS:**

- 2ea - 4 RUNG LADDERS, 1 UNIT WIDE
- 6ea - 4 RUNG LADDERS, 2 UNITS WIDE

**ALL "HOUSE ELECTRICS" HAVE SOOCPLEX MULTI-CABLE CIRCUITS.**

- ONE DIMMER PER CIRCUIT SOFT PATCH.
- ACCESS TO HOUSE CIRCUITS ON SR PATCH BRIDGE
- LIGHTING TOWERS HAVE PROJECTOR PLATFORMS AVAILABLE
- AT 8', 16', AND 24' FROM STAGE FLOOR



**SAN DIEGO OPERA**  
WE MAKE MUSIC WORTH SEEING

**TANNHAUSER**  
ACT 1-3 FLOORPLAN

DATE: FINAL 2008

SCALE: 1/4" = 1'-0" PAGE: 1 of 1

REVISED: 02/15/2008

WRITTEN BY:

DIRECTED BY: MICHAEL HAMPE  
SCENERY BY: JAMES MULDER  
LIGHTING BY: MARIE B BARRETT  
PRODUCTION BY: SCOTT HANSEN  
SCENERY FROM: SAN DIEGO OPERA

DIRECTOR OF PRODUCTION: RON ALLEN  
PRODUCTION MANAGER: JONAS FOSTER  
PRODUCTION STAGE MANAGER: MARY V. PETERS  
PRODUCTION CARPENTER: JOHN DAVID PETERS  
ASSISTANT LIGHTING DESIGNER: CHRIS RYNE

**SAN DIEGO OPERA**  
1200 3rd Ave, 18th Floor  
SAN DIEGO, CA 92101

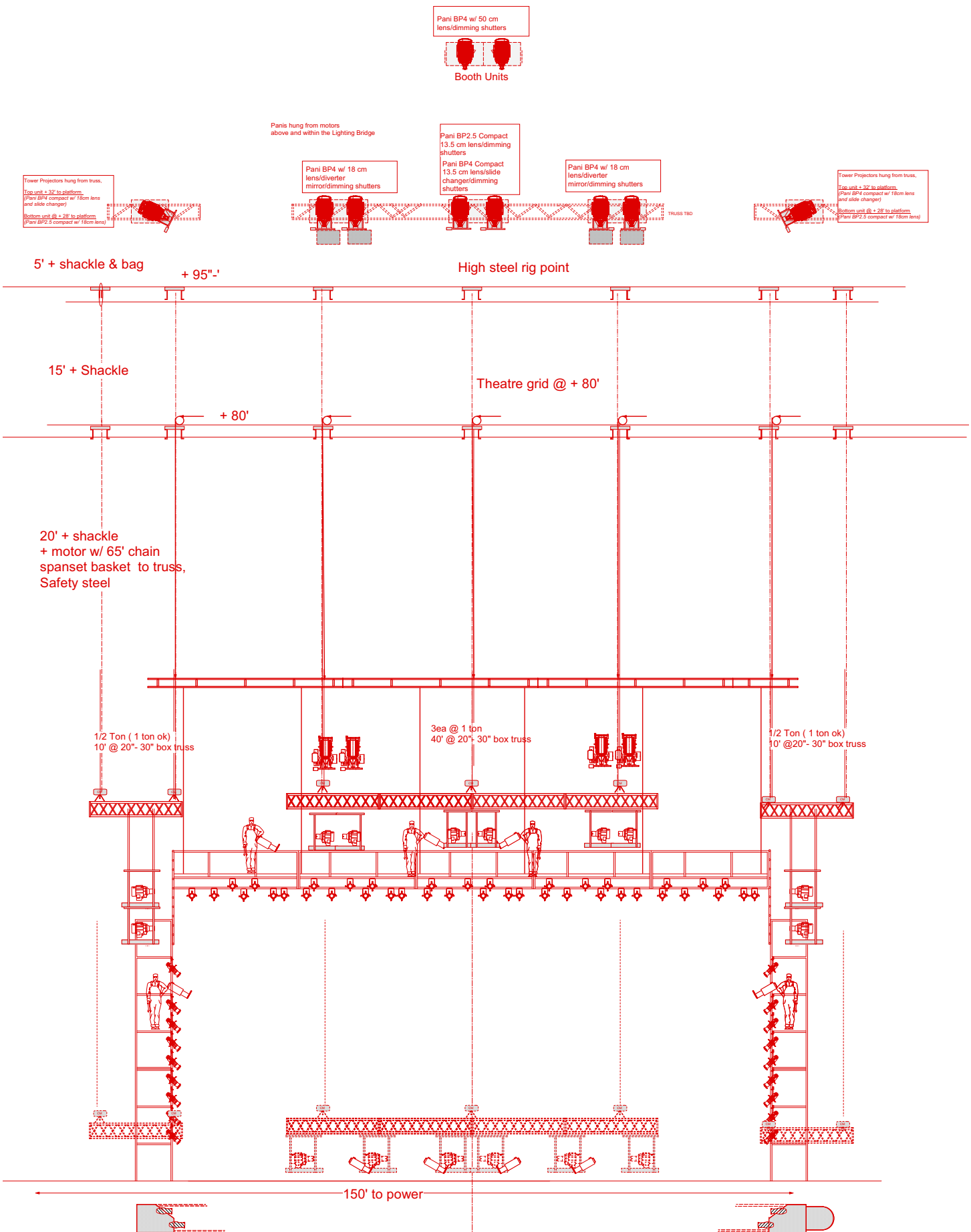
MAN OFFICE: 619-232-7530  
FAX: 619-231-6165  
SCENE STUDIO: 619-232-9111  
BOHEMIAN HALL: 619-232-7530

**CIVIC THEATRE**  
343 S.E. Street  
SAN DIEGO, CA 92101

PRODUCTION OFFICE: 619-231-6259  
STAGE MANAGER: 619-232-9111  
PRODUCTION FAX: 619-232-6366

From PL	Set	TANNHAUSER Lineset	Weights	Trim	Notes
26'-04"	<b>38</b>				
27'-02"	<b>39</b>	<b>#3 Show Electric</b>		50'-0"	Dnlt and xlt. 7.5" SCROLLERS.
27'-08"	<b>40</b>				
28'-04"	<b>41</b>	(short arbor)			
28'-10"	<b>42</b>	<b>#2 Focus Track ( 70')</b>	13.5		For #3E.
<b>PLATE</b>					<b>1/4" Spreader Plate</b>
29'-08"	<b>43</b>				
30'-04"	<b>44</b>	<b>#3 Black Border ( with show)</b>	8		<b>Extend to 80'.</b>
31'-02"	<b>45</b>				
31'-08"	<b>46</b>				
32'-04"	<b>47</b>	<b>#4 Show Electric</b>		47'-0"	Bklt and dnlt. Plays Act 2 only.
32'-10"	<b>48</b>	<b># 3 Border Storage</b>			
33'-05"	<b>49</b>	<b>#3 Focus Track ( 70')</b>	13.5		For #4 and #5 E.
34'-01"	<b>50</b>	<b>#4 House Electric (long arbor)</b>			
35'-02"	<b>51</b>	<b>#5 Show Electric</b>		53'-6"	Dnlt and xlt. 7.5" SCROLLERS. Tophat end p
35'-09"	<b>52</b>	<b>Act 2 Wall B/D Header Pick-Up (MOTOR)</b>	1/2 ton		<b>16 FPM - 25' cables</b>
<b>SPOT</b>	<b>52A</b>	<b>#3 Scrim Pick-Up</b>	<b>MULED</b>		
<b>MULED</b>	<b>53</b>	<b>SR Side Ladder</b>			Muled US/DS. NOT USED @ SDO.
36'-10"	<b>54</b>	<b>Act 2 USC Wall Header</b>	9		
<b>MULED</b>	<b>55</b>	<b>SL Side Ladder</b>			Muled US/DS. NOT USED @ SDO.
38'-02"	<b>56</b>				
	<b>57</b>				
	<b>58</b>				
<b>BEAM</b>					<b>6" beam</b>
39'-07"	<b>59</b>	<b>#4 Black Border ( House)</b>	5		
40'-03"	<b>60</b>	<b>#4 Focus Track ( 55')</b>	13.5		For #6E.
40'-11"	<b>61</b>				
41'-07"	<b>62</b>	<b>#6 Show Electric</b>		50'-6"	Dnlt and bklt. Tophat all units. Plays Acts 1&3 o
43'-04"	<b>63</b>	<b>#4 Scrim Pick-Up ( 25' cables)</b>	3		
44'-02"	<b>64</b>	<b>#4A Border ( not necc. If 7&amp; 8 Elects. mas</b>	4		Used the 8' Lucia Borders ( fit in the box)
44'-08"	<b>65</b>	<b>#7 Show Electric ( taildown 15' min/ 20' max)</b>		32'-0"	Xlt and window bklt. Act 2 only. <b>40' pipe. Tail</b>
45'-04"	<b>66</b>	<b>#8 Show Electric (taildown 15'min/ 20' max)</b>		36'	T-3 Cyc units. Act 2 only. <b>35' pipe. Taildown</b>
46'-02"	<b>67</b>				Kick US.
48'-02"	<b>67A</b>	<b>#5 Scrim Pick-Up ( 20' cables)</b>	2		
<b>SPOT</b>	<b>67B</b>	<b>Upstage Act 1&amp;3 Black Legs (45'ers)</b>			16' wide house legs. Onstage @ 19'-6" R&L of
<b>SPOT</b>	<b>67C</b>	<b>Scrim Breast Line</b>			Single point @ C. Use to breast scrim when retrimming #7 and #8 Show Electrics in and out of Act 2.
<b>PLATE</b>					<b>1/4" Spreader Plate</b>
49'-05"	<b>68</b>	<b>#5 Black Border</b>	5		
50'-06"	<b>68A</b>	<b>Act 2 White Filled Scrim ( 15' cables)</b>	3.5		(Stock - used Big Blue Sky)
58'-00"	<b>TRUSS</b>	<b>#9 Show Electric</b>			Source Fours with templates. Add 20' track & 32' Blacks to SL end.

From PL	Set	TANNHAUSER Lineset	Weights	Trim	Notes
00'-04"	0	Fire Curtain			
01'-02"	1	Title Screen/Teaser	25+7		
01'-10"	2	House Curtain	30.5		
02'-07"	3	Show Projection Scrim	3.5		
03'-02"	4	DS Branches	2		
03'-10"	5	#1 Black Border/Blackout Drop	11.5		
	5A	SDO Hard Legs			
04'-06"	6	Lighting Bridge			Circuit pipe.
05'-01"	7	#1 Show Electric			One 4.5" SCROLLER. 7.5" CXIs.
05'-10"	8	Lighting Bridge			
06'-06"	9	#1A Show Electric			7.5" CXIs.
07'-02"	10	Lighting Bridge			
07'-10"	11				
09'-01"	12				
PLATE					1/4" Spreader Plate
09'-09"	13				
10'-05"	14				
11'-01"	15	# 1 Border Storage	5		
11'-09"	16				
12'-05"	17				
13'-01"	18	Act 2 Return Walls	13		31'-0" R&L of C. <b>Extend pipe/ 25' cables</b>
13'-09"	19	Act 2 Wall B/D Pick-Up ( MOTOR)			<b>16FPM _ 20 ' cables</b>
SPOT	19A	#1 Scrim Pick-Up	MULED		
14'-05"	20	# 1 Venusberg Scrim Legs	0.5		18'-9"R & 22'-1" L of C ( tie end of pipe on)
15'-02"	21	# 1 Netted Tree Foliage	0		NOT USED @ SDO
15'-09"	22	Tree #1 (DSR)	5		
16'-05"	23	Tree #4 (DSL)	3		
17'-02"	24	# 2 Venusberg Scrim Legs	0.5		16'-0"R & 16'-9"L of C ( tie end of pipe on)
17'-09"	25	# 2 Netted Tree Foliage	0		NOT USED @ SDO
18'-05"	26	Tree #2 (USR)	4		
BEAM					6" beam
19'-09"	26A	Tree #3 (USL)	3.5		
	27				
	28				
20'-05"	29				
21'-01"	30	#2 Show Electric		48'-0"	Depth and vlt 7.5" SCROLLERS



Seven motors with rigging and control - Jan 9 through Feb 6  
 One multi motor controller( 4 motors minimum)  
 Power cable to controller = 150'  
 Power from each motor to control 100' max

