

# RIGOLETTO

Scenic Designer Carl Toms

Originally built for New York City Opera

CARPEND  
ACT 2

DRAPES IN THIS SCENE FROM  
TO BE SELECTED - TO BE PAIRED  
WITH THESE DRAPES THAT HAVE BEEN SET

DRAPES IN THE SCENE FROM  
IN "PASTOR" AND IN THE "BAROQUE" SCENE  
NOT IN THE "RESCUE" SCENE  
SEE MODEL PIECES

ALLOW THE DRAPES TO TRAIL ON THE FLOOR

DOWN LIT DRAPES



ES-119  
SCENIC DESIGNER  
BOSTON

|                       |
|-----------------------|
| RIGOLETTO             |
| NEW YORK CITY OPERA   |
| DESIGNED BY CARL TOMS |
| Scale 1/2" TO 10'     |

NO. 10

**Following are photos from NYCO presentations. Scenery is currently configured differently, but these photos will give you a general idea of the scenery look. San Diego Opera will be presenting this production in March/April 2009. New photos will be posted then. If you are interested in renting this production (which includes costumes), please contact San Diego Opera.**

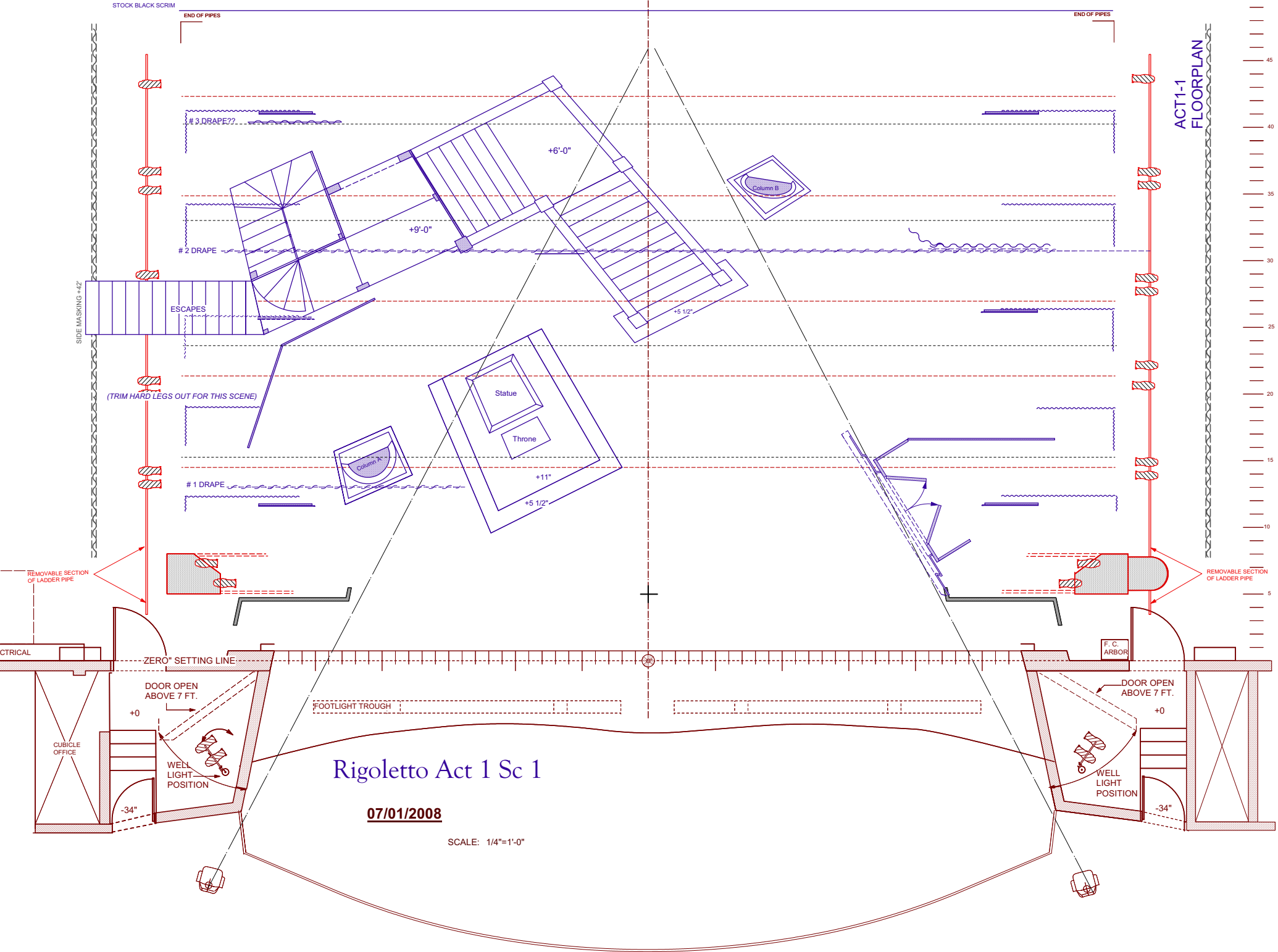


NYCO Prologue  
(not done at SDO)



Act 1 Scene 1

II



# Rigoletto Act 1 Sc 1

07/01/2008

SCALE: 1/4"=1'-0"

ACT1-1  
FLOORPLAN



# 3 DRAPE??

# 2 DRAPE

# 1 DRAPE

+6'-0"

+9'-0"

+5 1/2"

Statue

Throne

+11"

+5 1/2"

Column B

Column A

ESCAPES

(TRIM HARD LEGS OUT FOR THIS SCENE)

REMOVABLE SECTION OF LADDER PIPE

REMOVABLE SECTION OF LADDER PIPE

CTRICAL

ZERO° SETTING LINE

DOOR OPEN ABOVE 7 FT.

F. O. ARBOR

DOOR OPEN ABOVE 7 FT.

CUBICLE OFFICE

WELL LIGHT POSITION

WELL LIGHT POSITION

FOOTLIGHT TROUGH

+0

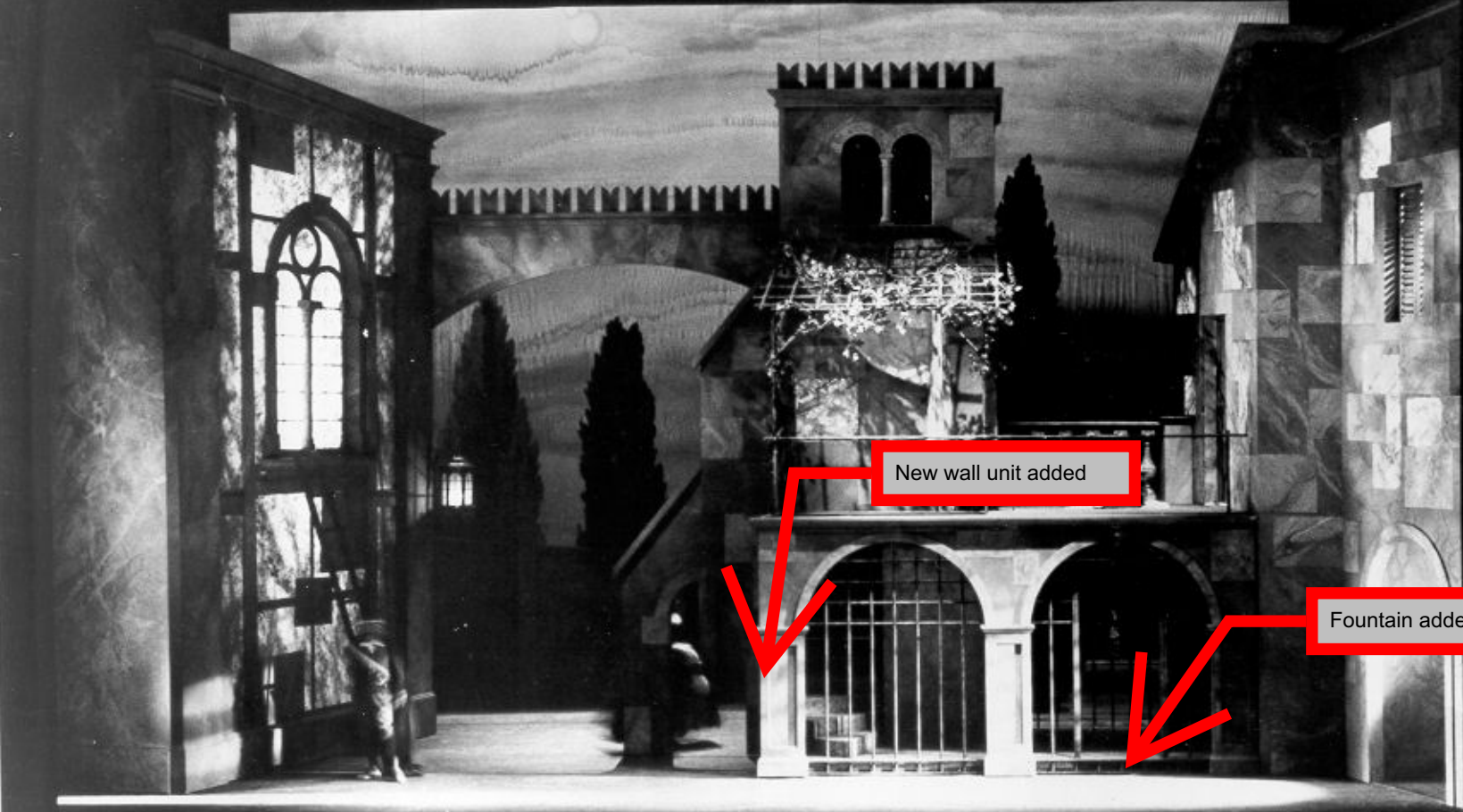
+0

-34"

-34"



What's taking them so long?



New wall unit added

Fountain added

Act 1 Sc 2  
(Revised in San Diego-see plan)

I-ii

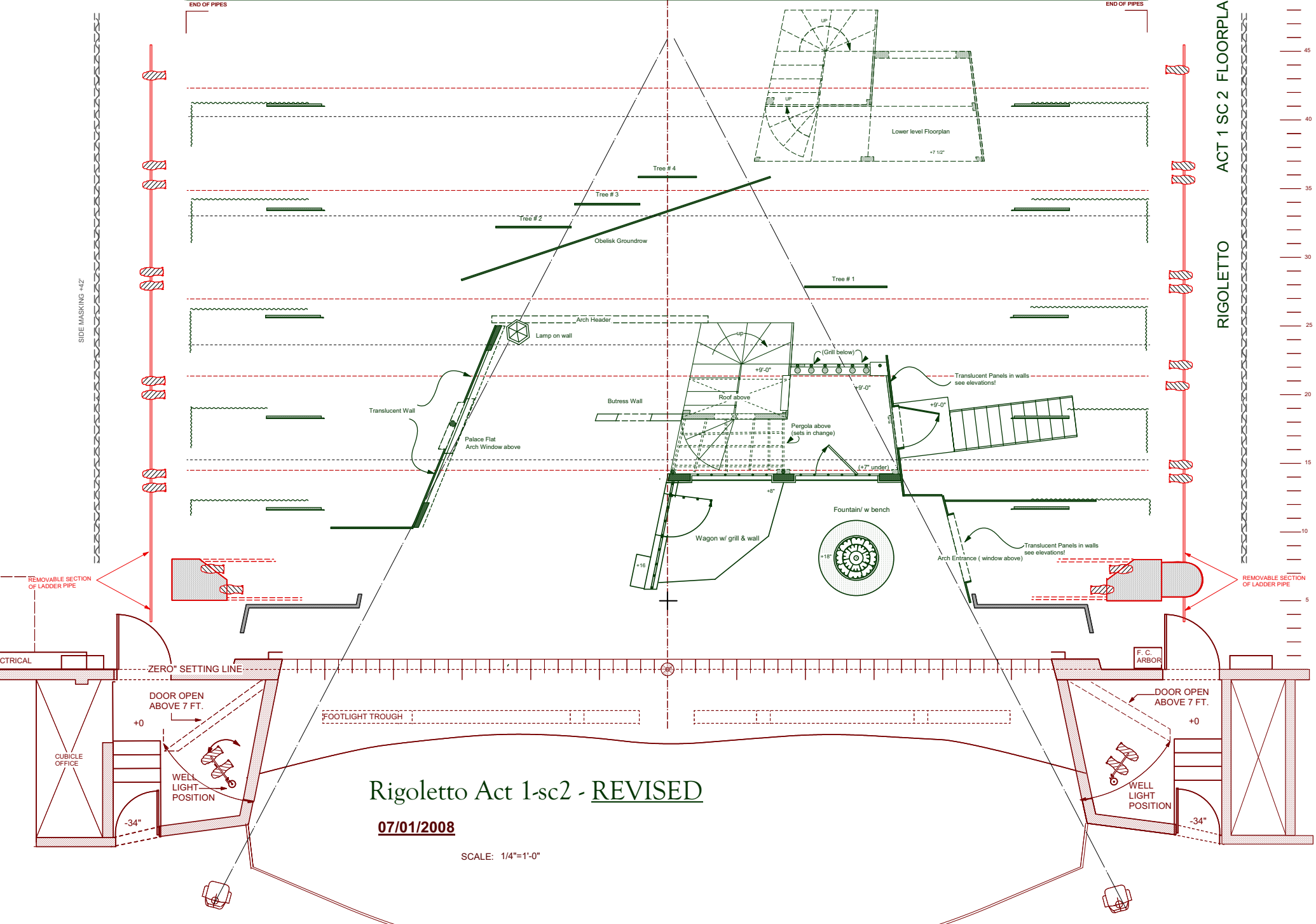
BLACK RP (stock)

STOCK BLACK SCRIM  
SHOW BACKDROP  
END OF PIPES

END OF PIPES

SIDE MASKING +42'

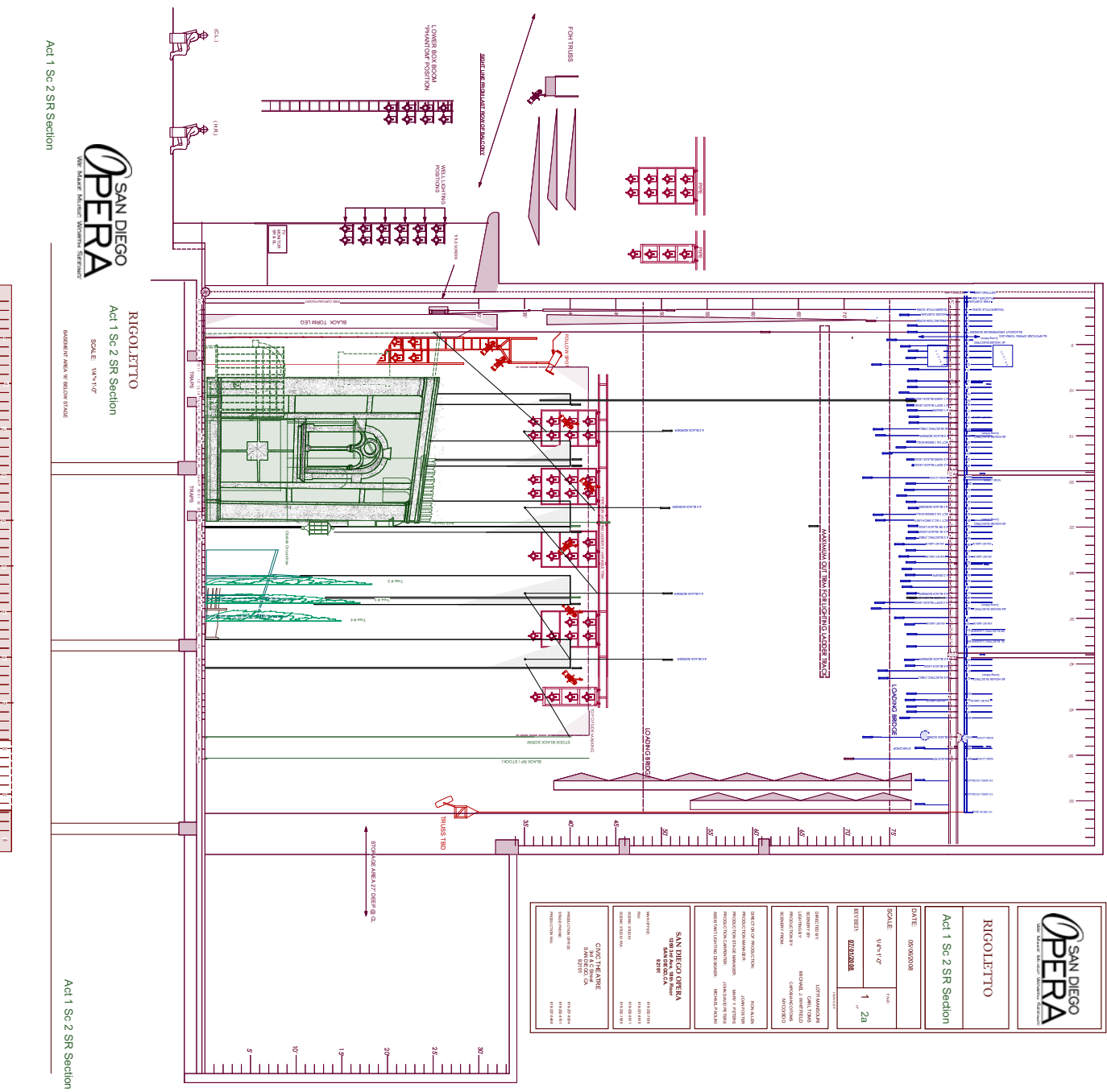
ACT 1 SC 2 FLOORPLAN  
RIGOLETTO



# Rigoletto Act 1-sc2 - REVISED

07/01/2008

SCALE: 1/4"=1'-0"



Act 1 Sc 2 SR Section



**RIGOLETTO**  
Act 1 Sc 2 SR Section  
SCALE: 1/4"=1'-0"

EXHIBIT PANEL 18 BELOW STAGE



Act 1 Sc 2 SR Section



**RIGOLETTO**

Act 1 Sc 2 SR Section

|          |            |
|----------|------------|
| DATE     | 09/06/2008 |
| SCALE    | 1/4"=1'-0" |
| REVISION | 02/03/2008 |
| DATE     | 11/28      |

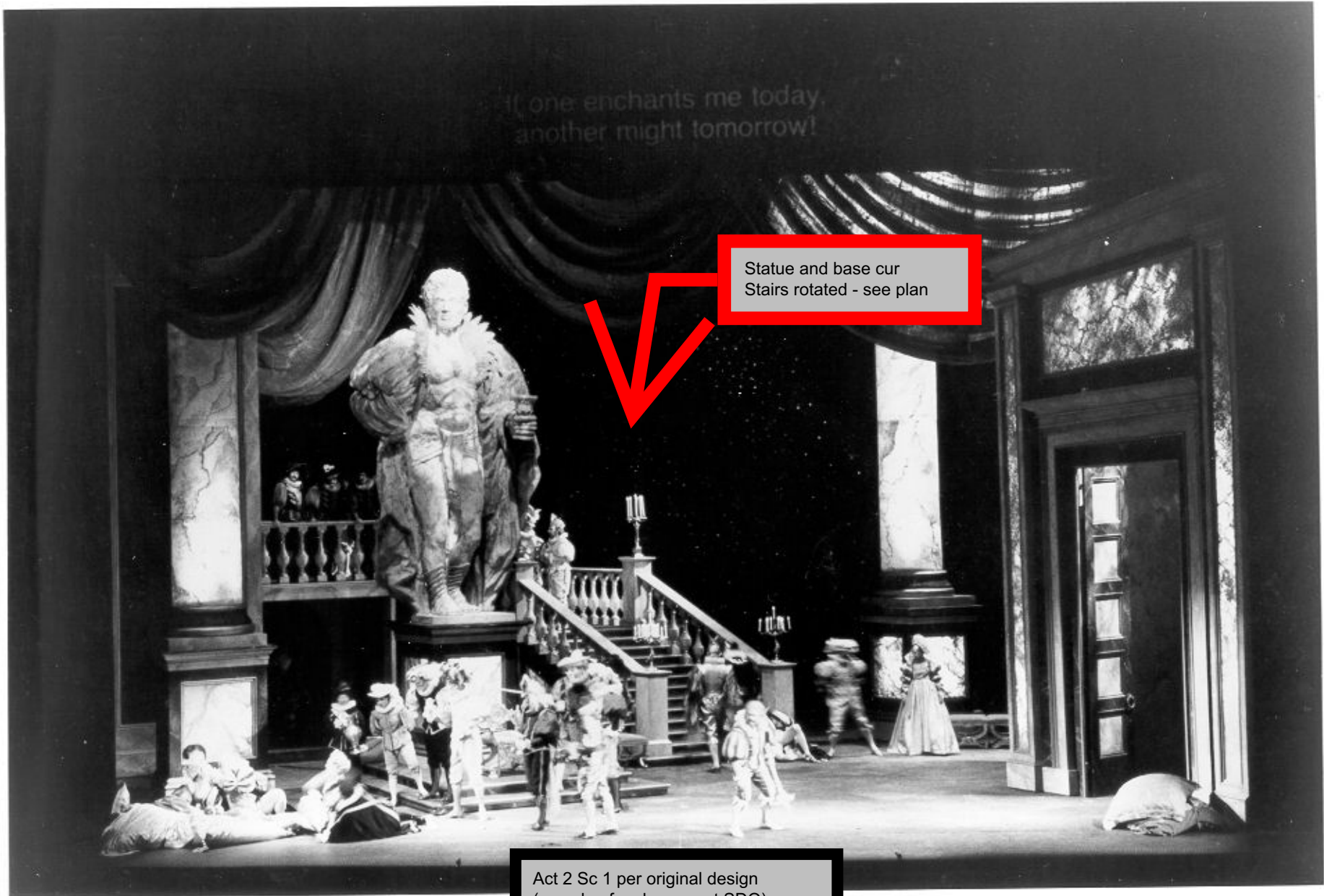
|              |                     |
|--------------|---------------------|
| DIRECTOR     | LEITH ANDERSON      |
| DESIGNER     | JOHN W. HANCOCK     |
| PRODUCTION   | MICHAEL J. BENTLEY  |
| CONSTRUCTION | CHRISTOPHER W. WICK |
| SCENERY      | FRANK R. WICK       |

|                             |                 |
|-----------------------------|-----------------|
| DIRECTOR OF PRODUCTION      | JOHN ALLEN      |
| PRODUCTION MANAGER          | JOHN W. HANCOCK |
| PRODUCTION ASSISTANT        | FRANK R. WICK   |
| ARTIST IN CHARGE OF SCENERY | FRANK R. WICK   |

|                        |                 |
|------------------------|-----------------|
| <b>SAN DIEGO OPERA</b> |                 |
| SAN DIEGO, CALIFORNIA  |                 |
| ARTIST                 | FRANK R. WICK   |
| MANAGER                | JOHN W. HANCOCK |
| DESIGNER               | JOHN W. HANCOCK |

|                       |                 |
|-----------------------|-----------------|
| <b>CHUCK THEATRE</b>  |                 |
| SAN DIEGO, CALIFORNIA |                 |
| PRODUCTION            | FRANK R. WICK   |
| DESIGNER              | JOHN W. HANCOCK |





If one enchants me today,  
another might tomorrow!

Statue and base cur  
Stairs rotated - see plan

Act 2 Sc 1 per original design  
(see plan for changes at SDO)

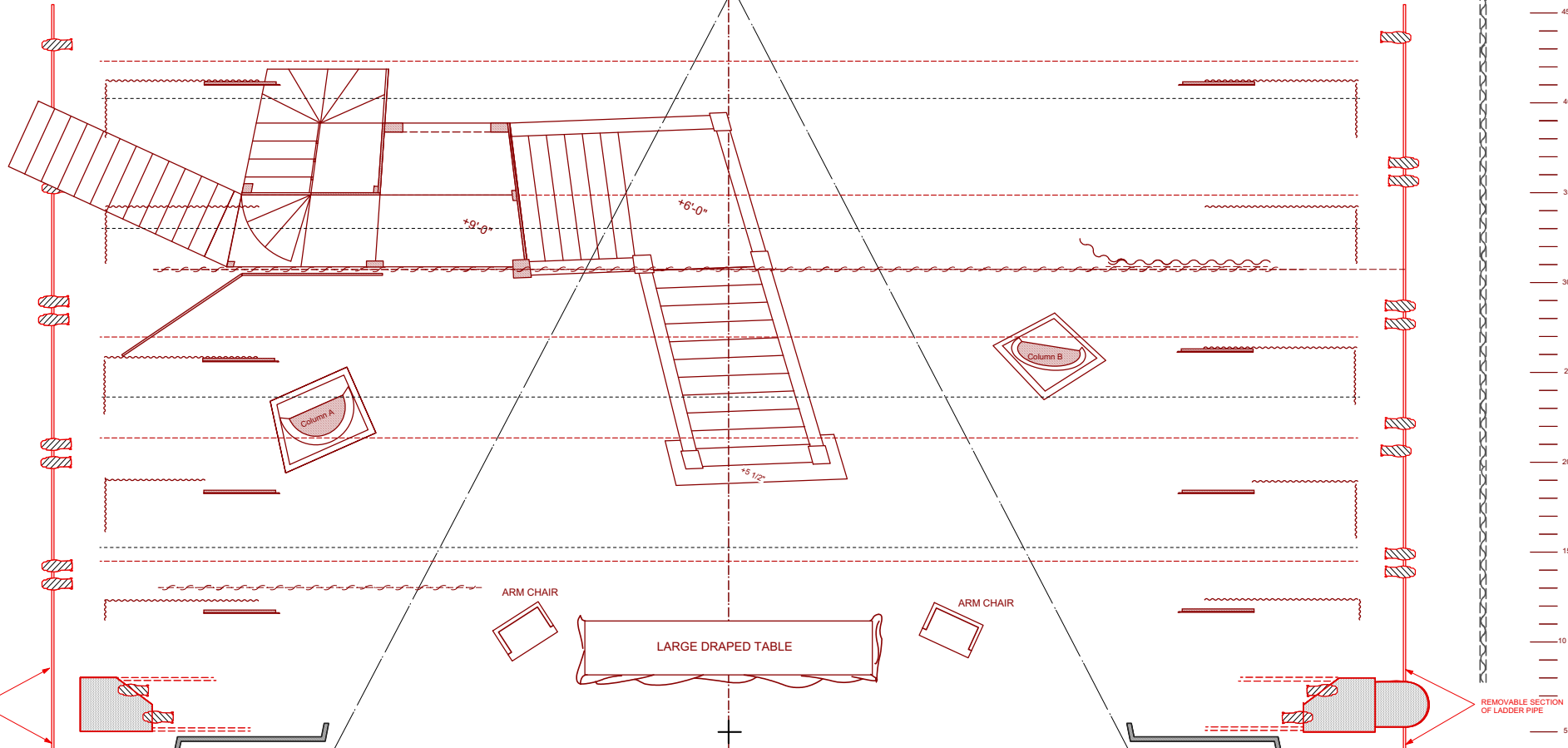
BLACK RP (stock)

STOCK BLACK SCRIM

END OF PIPES

END OF PIPES

SIDE MASKING +42'



REMOVABLE SECTION OF LADDER PIPE

REMOVABLE SECTION OF LADDER PIPE

CTRICAL

ZERO° SETTING LINE

DOOR OPEN ABOVE 7 FT.

F. C. ARBOR

DOOR OPEN ABOVE 7 FT.

CUBICLE OFFICE

WELL LIGHT POSITION

WELL LIGHT POSITION

FOOTLIGHT TROUGH

**RIGOLETTO**  
**ACT TWO -REVISED**

**07/01/2008**

SCALE: 1/4"=1'-0"

-34"

-34"

Act 2 SR Section



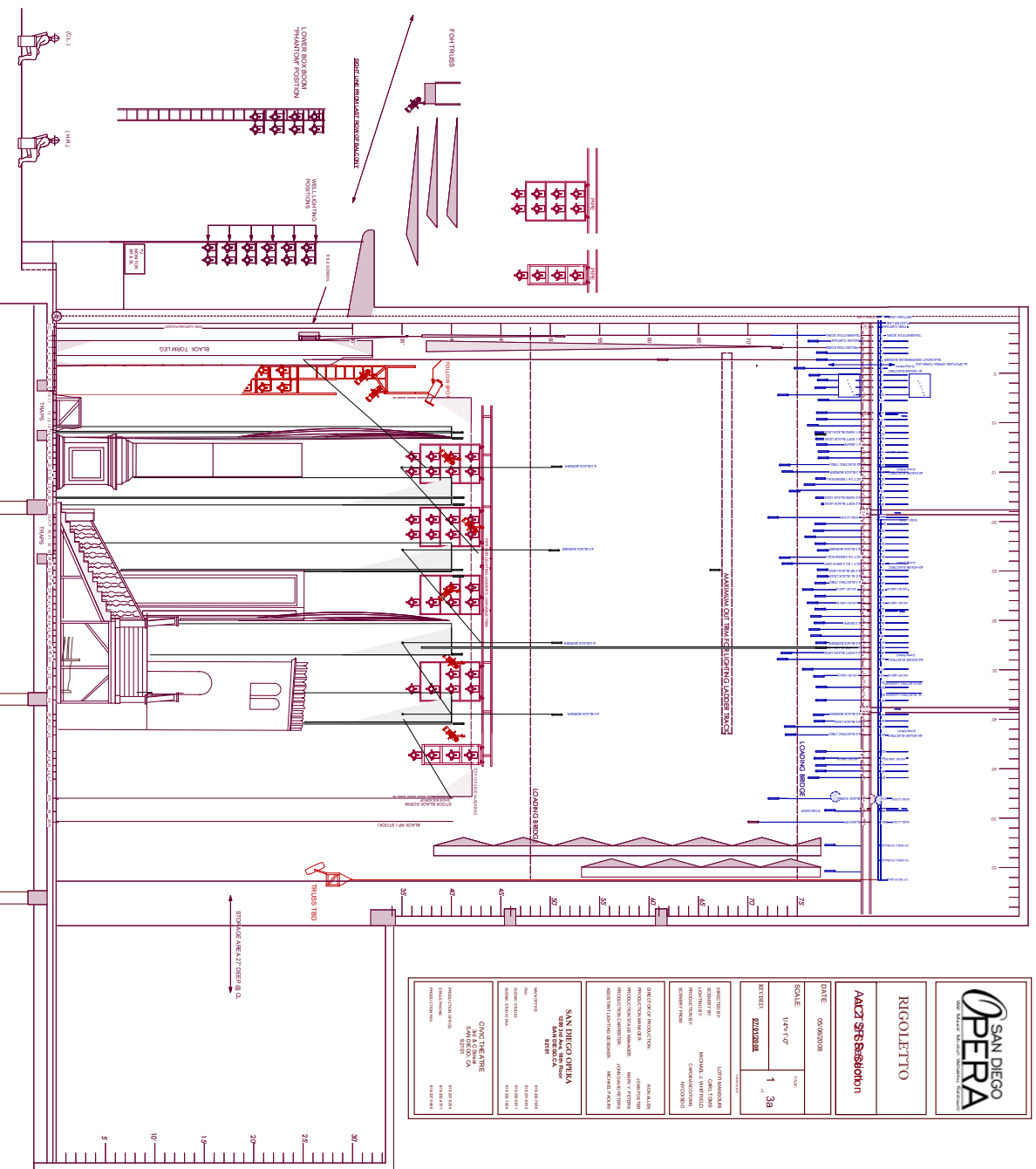
**RIGOLETTO**  
Act 2 SR Section

SCALE: 1/4"=1'-0"

EXISTING WALLS BELOW STAGE



Act 2 SR Section



**RIGOLETTO**

**Act 2 SRs Resolution**

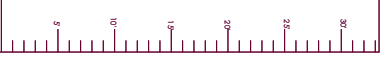
DATE: 09/05/2008  
SCALE: 1/4"=1'-0"  
REVISION: 02/03/08

DIRECTOR OF PRODUCTION: ROBERTALDO LITVIN  
GENERAL MANAGER: MICHAEL J. BENTLEY  
PRODUCTION MANAGER: CHRISTOPHER W. WOODRUFF  
SCENERY DESIGNER: MICHAEL W. MACKAY

DIRECTOR OF PRODUCTION: ROBERTALDO LITVIN  
GENERAL MANAGER: MICHAEL J. BENTLEY  
PRODUCTION MANAGER: CHRISTOPHER W. WOODRUFF  
SCENERY DESIGNER: MICHAEL W. MACKAY

**SAN DIEGO OPERA**  
SAN DIEGO, CA  
1910 LA JOLLA VILLAGE SQUARE  
SAN DIEGO, CA 92161  
TEL: 619.594.1234  
WWW.SDOPERA.ORG

**CHUCK THEATRE**  
SAN DIEGO, CA  
1000 LA JOLLA VILLAGE SQUARE  
SAN DIEGO, CA 92161  
TEL: 619.594.1234  
WWW.CHUCKTHEATRE.COM





Act Three

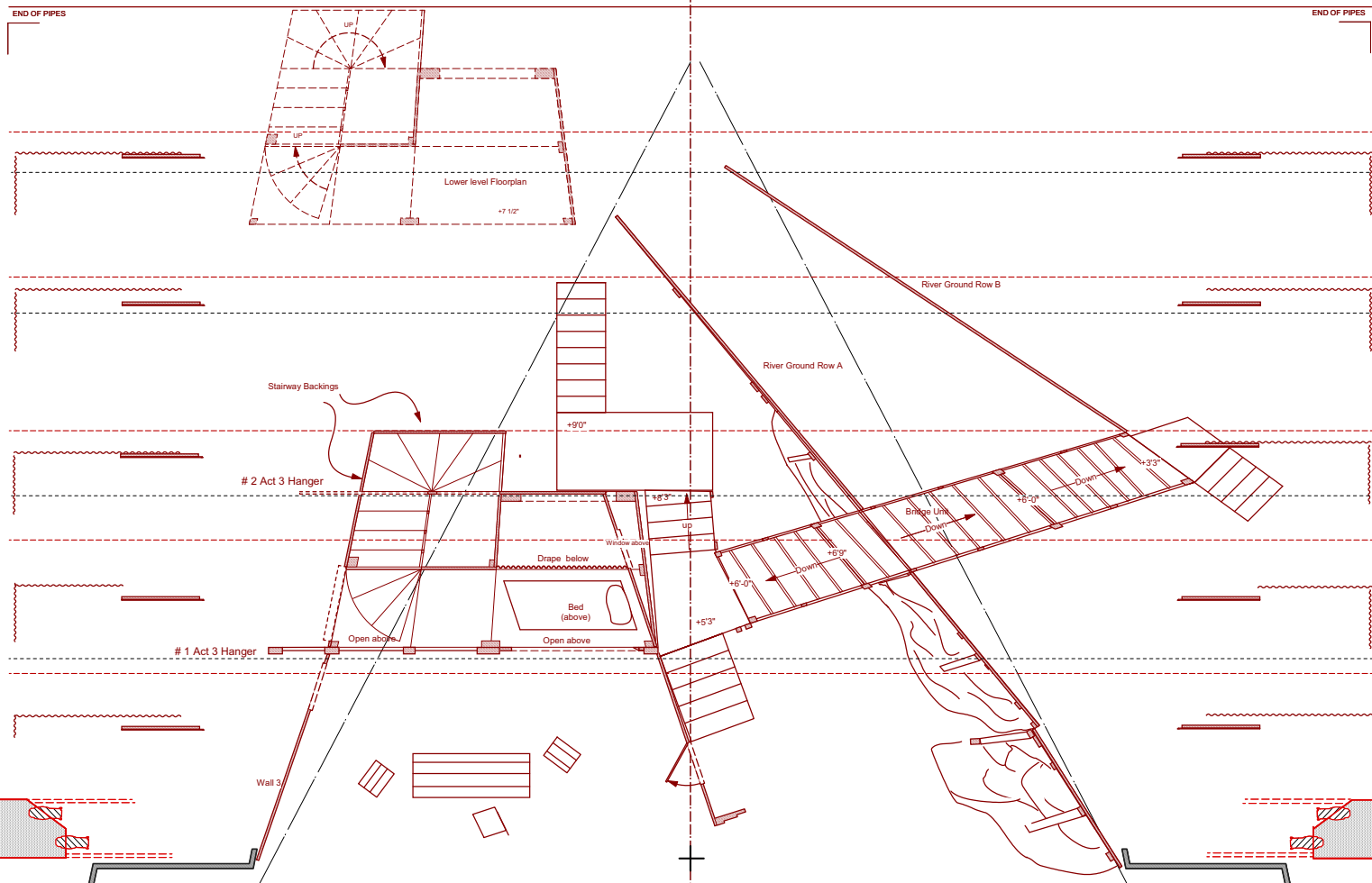
III

N420

ACT 3 FLOORPLAN



SHOW BACKDROP  
END OF PIPES



END OF PIPES

END OF PIPES

SIDE MASKING +42'

REMOVABLE SECTION OF LADDER PIPE

REMOVABLE SECTION OF LADDER PIPE

CRITICAL

ZERO° SETTING LINE

DOOR OPEN ABOVE 7 FT.

DOOR OPEN ABOVE 7 FT.

CUBICLE OFFICE

WELL LIGHT POSITION

WELL LIGHT POSITION

-34"

-34"

# Rigoletto Act 3

07/01/2008

SCALE: 1/4"=1'-0"

FOOTLIGHT TROUGH

Stairway Backings

# 2 Act 3 Hanger

# 1 Act 3 Hanger

Wall 3

Bed (above)

Drape below

Window above

River Ground Row B

River Ground Row A

Bridge Lift

F. C. ARBOR



**RIGOLETTO**

**Act 3 SR Section**

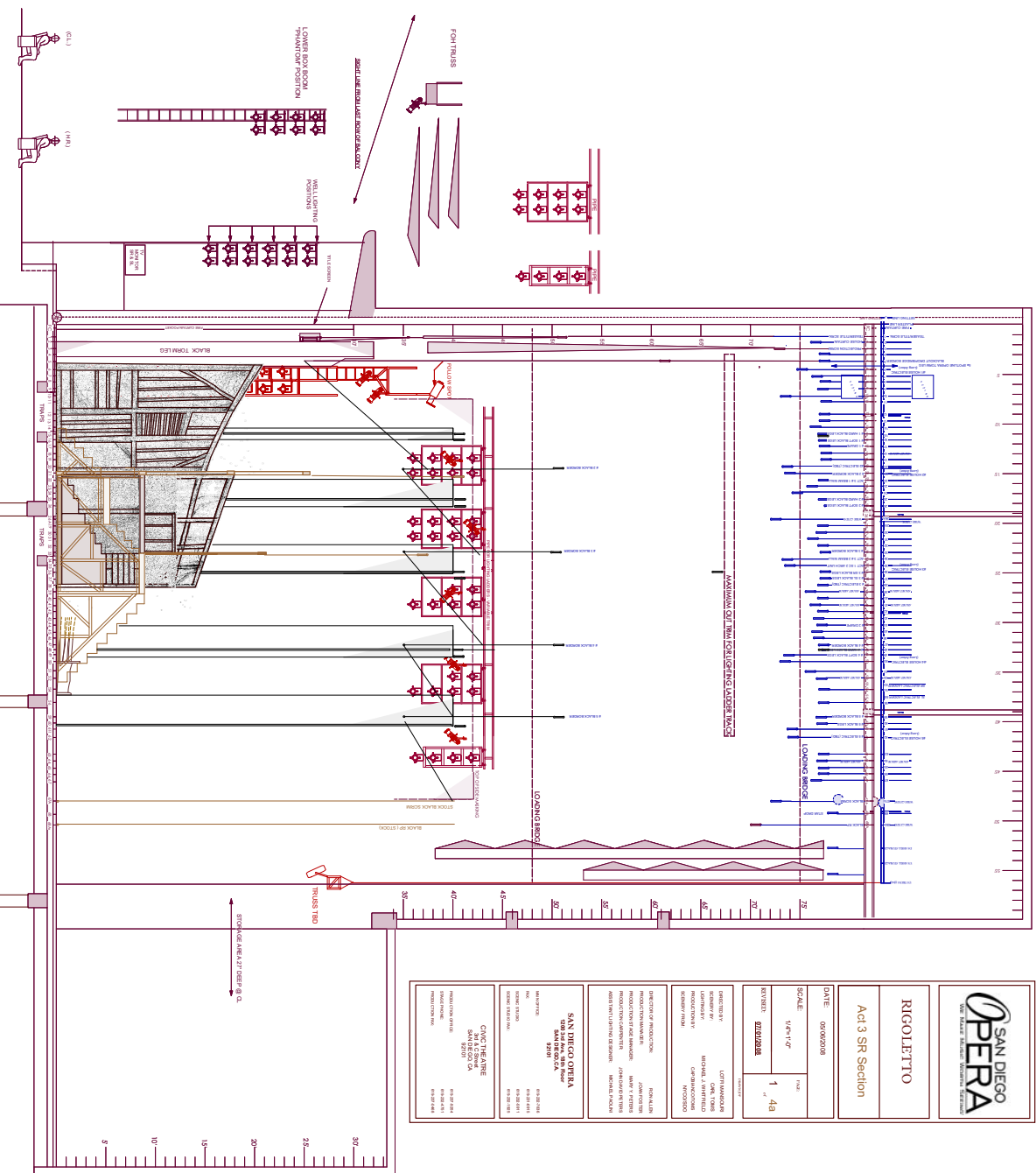
|          |              |
|----------|--------------|
| DATE     | 09/06/2008   |
| SCALE    | 1/8" = 1'-0" |
| REVISION | 02/03/2008   |
|          | 1" = 4'-0"   |

|            |                      |
|------------|----------------------|
| DIRECTOR   | LEITH ANDERSON       |
| CONDUCTOR  | MICHAEL J. ANTONETTO |
| PRODUCTION | CAROLAN COOPER       |
| SCENERY    | FRANCO               |

|                         |   |
|-------------------------|---|
| DIRECTOR OF PRODUCTIONS | JOHN ALLEN  |
| PRODUCTION MANAGER      | JOHN COOPER   |
| PRODUCTION ASSISTANTS   | FRANCOISE BROWN<br>MELISSA HARRIS<br>MELISSA MACKAY |

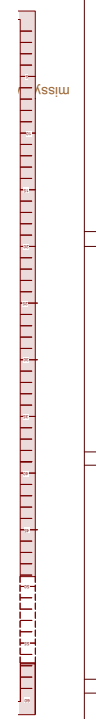
|                        |              |
|------------------------|--------------|
| <b>SAN DIEGO OPERA</b> |              |
| SAN DIEGO              |              |
| ARTIST                 | 610.543.8442 |
| BOX OFFICE             | 619.594.8121 |
| ADMINISTRATION         | 619.594.8121 |
| GENERAL INFORMATION    | 619.594.8121 |

|                      |              |
|----------------------|--------------|
| <b>CHUCK THEATRE</b> |              |
| SAN DIEGO, CA        |              |
| PRODUCTION OFFICE    | 619.594.8121 |
| PRODUCTION PHONE     | 619.594.8121 |
| PRODUCTION FAX       | 619.594.8121 |



**RIGOLETTO**

**Act 3 SR Section**



Act 1 Sc 1 SR Section

Act 3 SR Section



Photo: Carol Rosegg



Photo: Carol Rosegg

Photos from NYCO Performances

RIGOLETTO; Directed by Christopher Mattliano; Sets by John Conklin; Costumes by Carl Toms



Photo: Carol Rosegg



Photo: Carol Rosegg

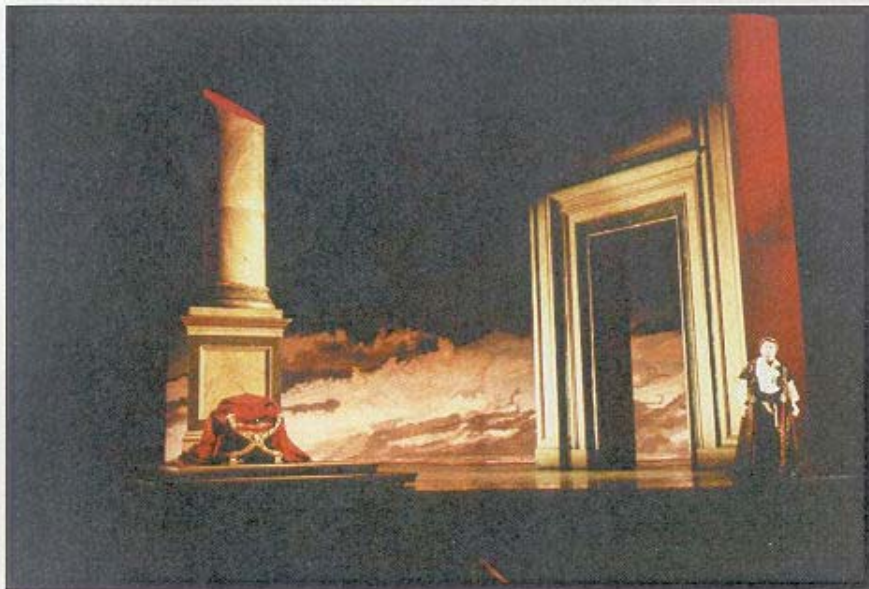


Photo: Carol Rosegg

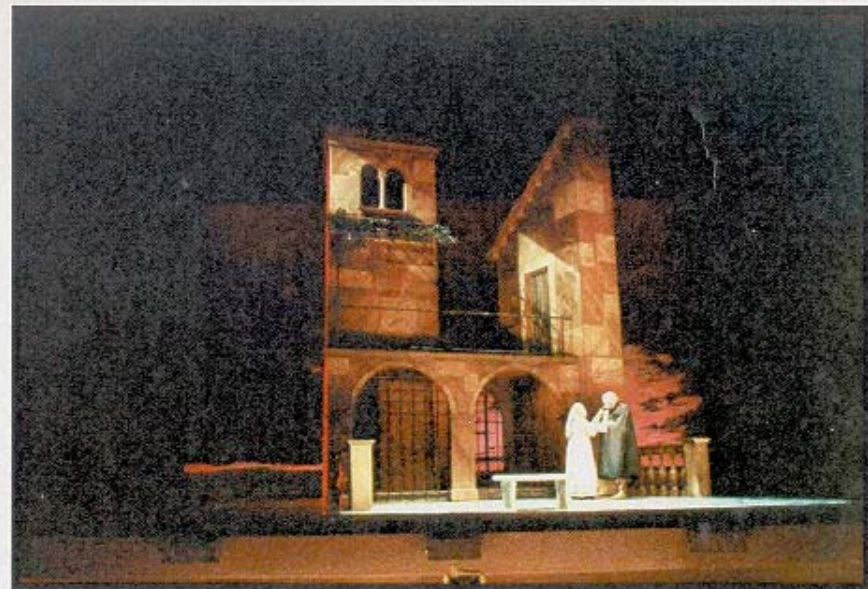


Photo: Carol Rosegg

RIGOLETTO; Directed by Christopher Mattliano; Sets by John Conklin; Costumes by Carl Toms



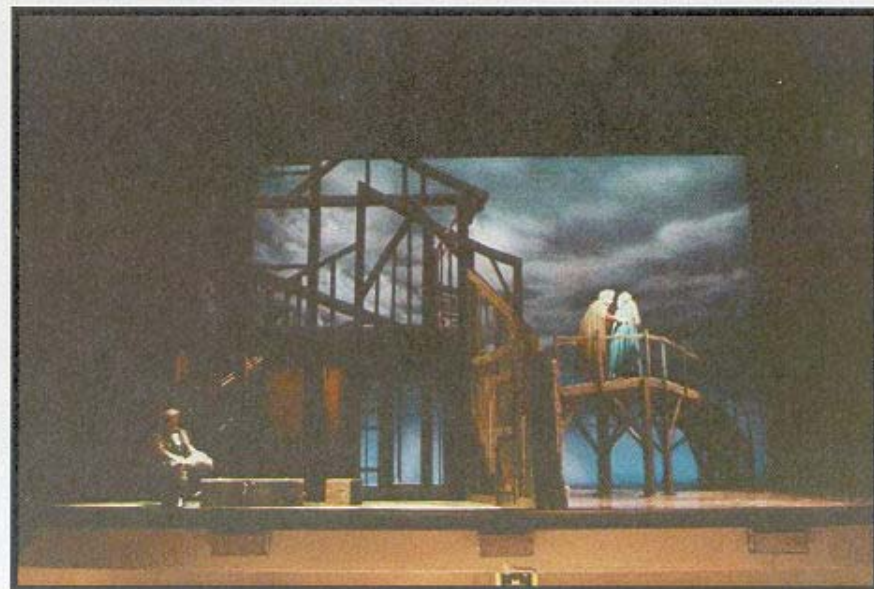
Rigoletto



Act 1, Scene 2



Rigoletto



Act 3

RIGOLETTO; Sets by Carl Toms; Costumes by Carl Toms