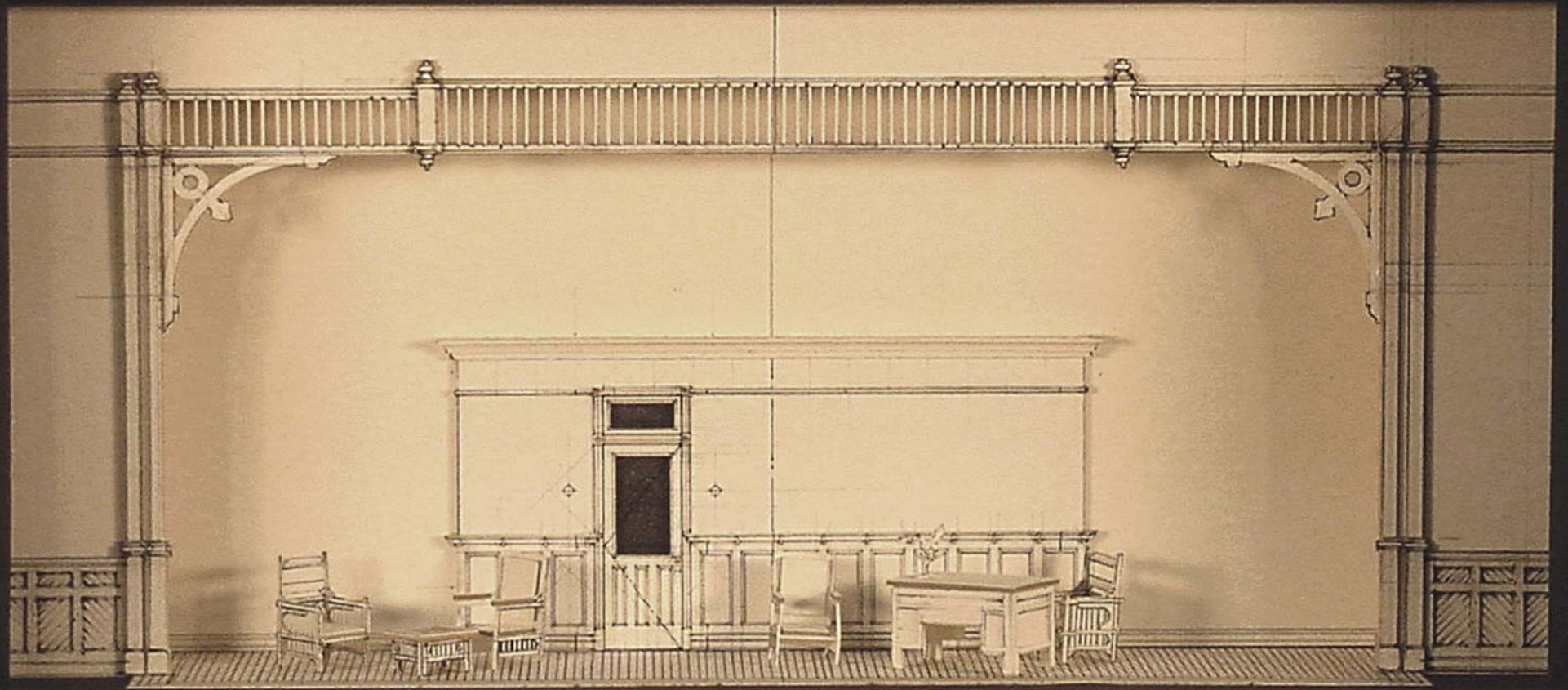


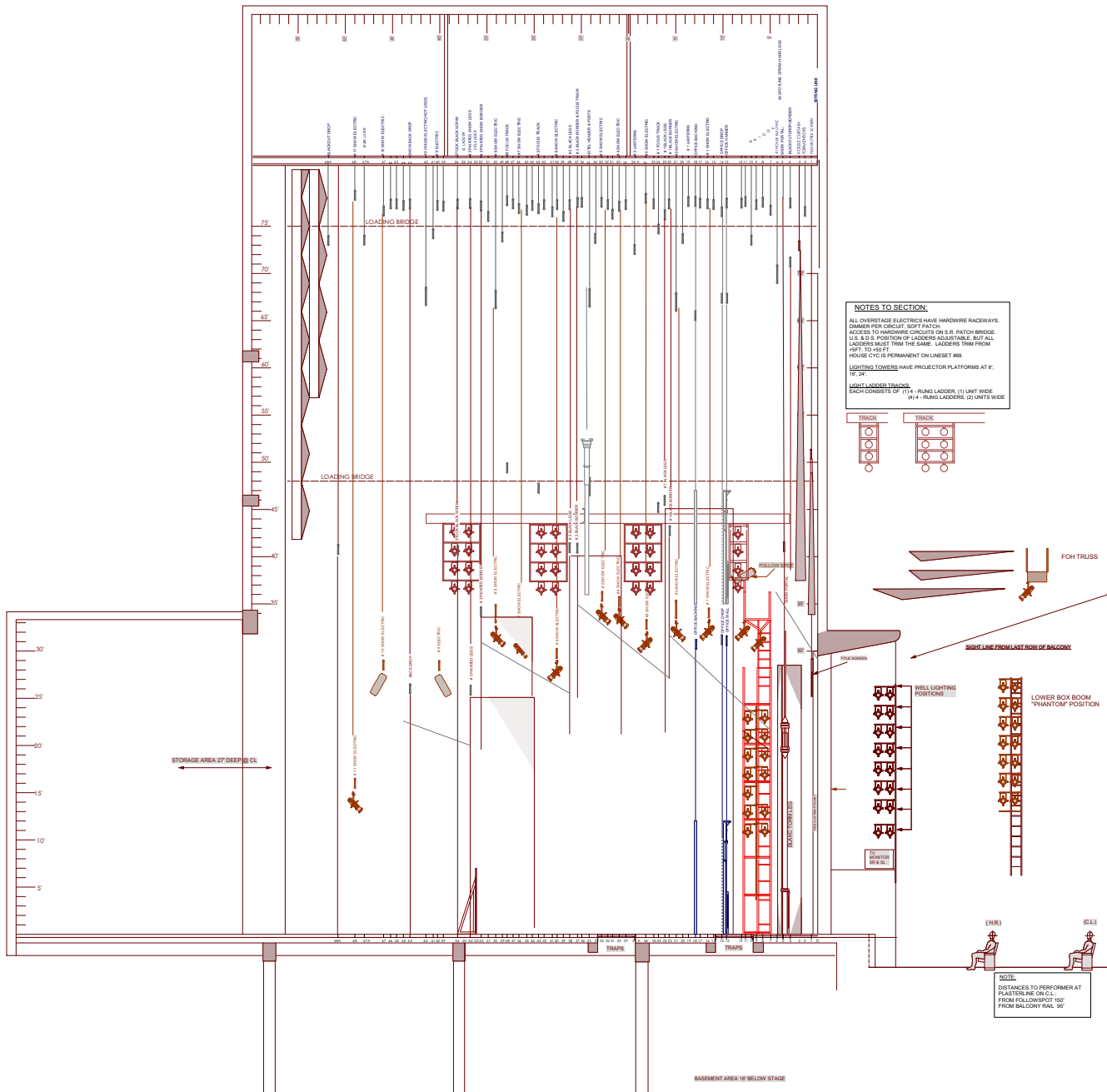
PASQUALE'S OFFICE



...get ready to be evicted!







**NOTES TO SECTION:**

ALL OVERSTAGE ELECTRICS HAVE HARDWARE RACEWAYS. DANGER FOR CIRCUIT. NOFT PATCH ACCESS TO HARDWARE CIRCUITS ON S.H. PATCH BRIDGE U.S. & S.S. POSITION OF LADDERS ADJUSTABLE, BUT ALL LADDERS MUST TRIM FROM HPT. TO 45FT.

LIGHTING TOWERS ARE PERMANENT ON LINESSET #88.



HOUSE CYC IS PERMANENT ON LINESSET #88.

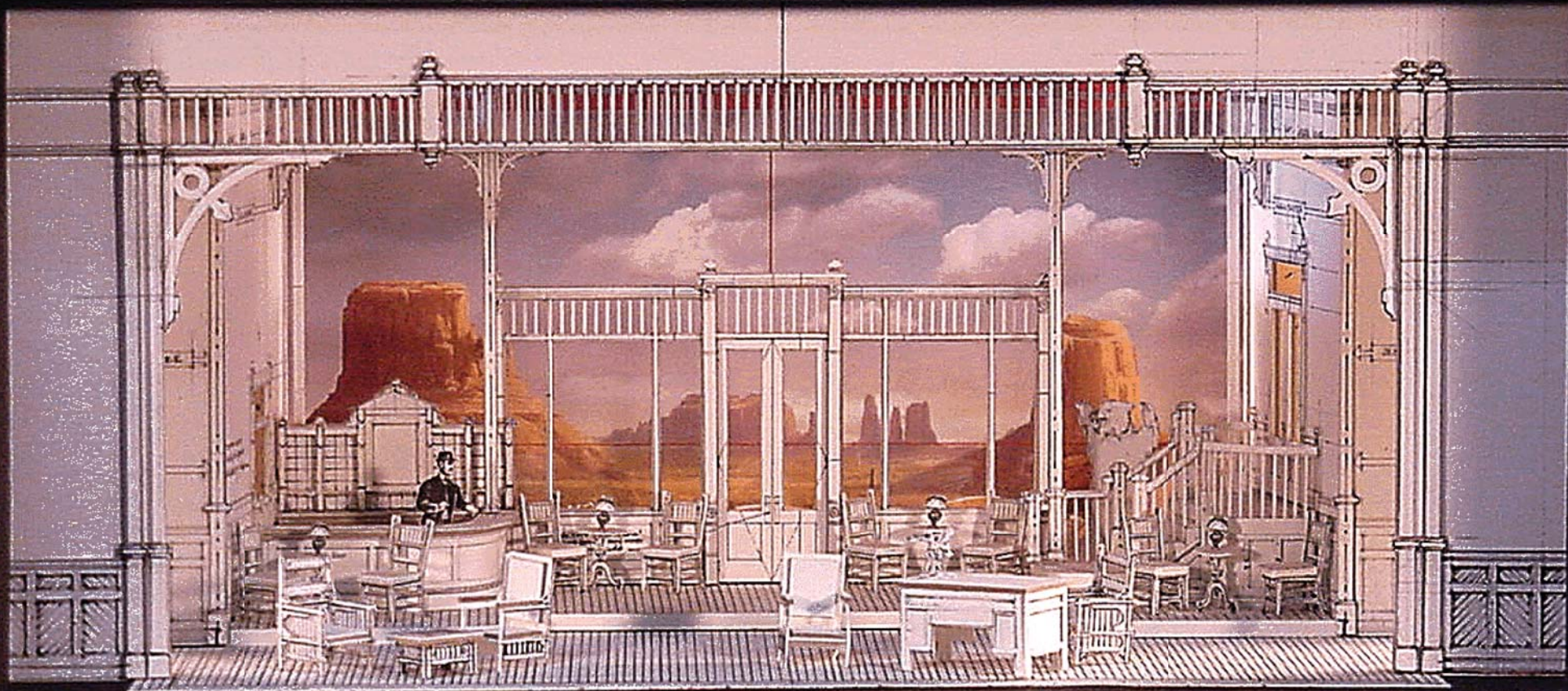
LIGHTING TOWERS HAVE PROJECTOR PLATFORMS AT 8', 12', 34'.

**LIGHT TOWER TRACKS:**  
 EACH CONSISTS OF (1) 4 - RUNG LADDER, (1) UNIT WIDE (2) 4 - RUNG LADDERS, (2) UNITS WIDE



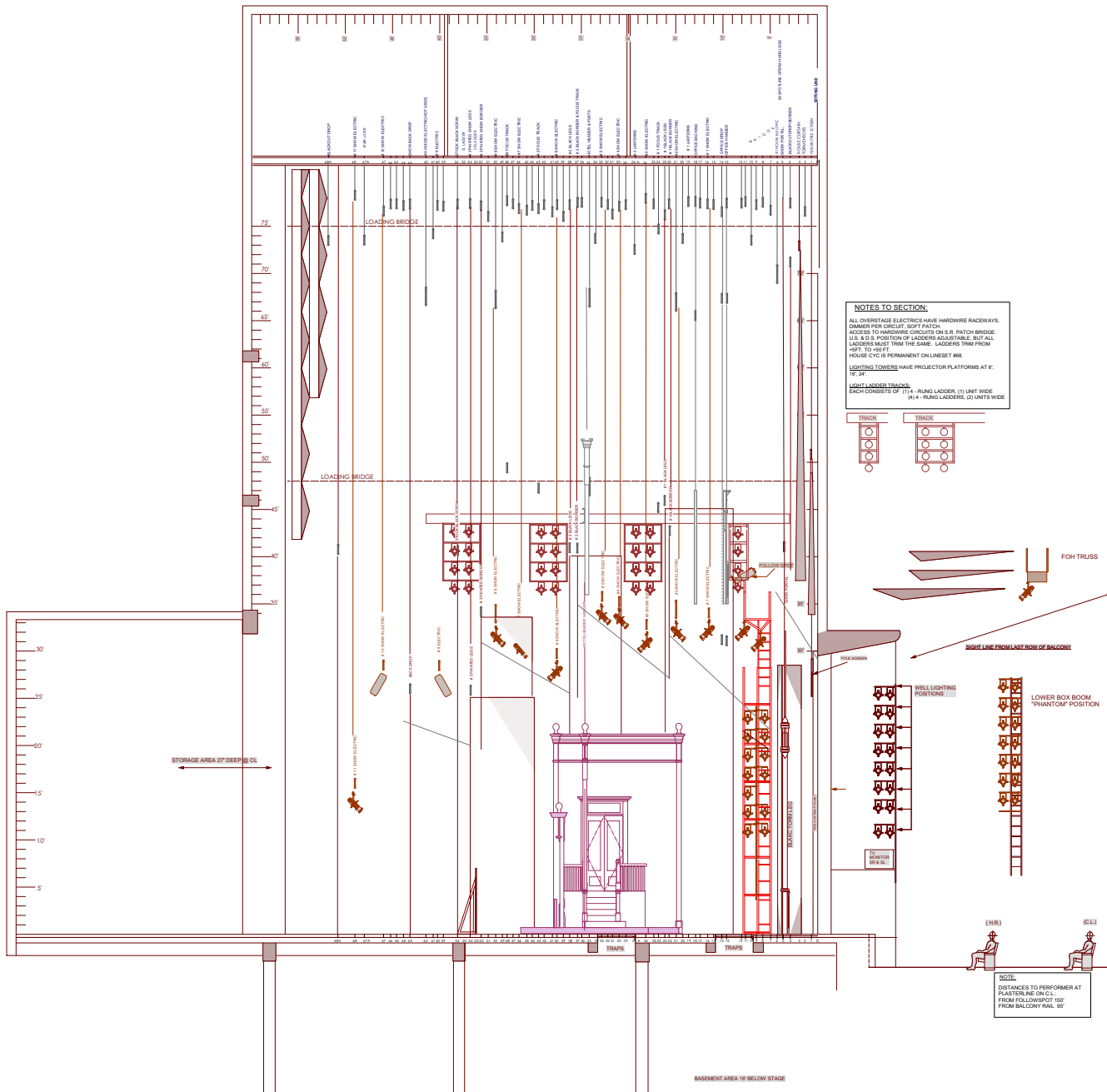
**NOTE:**  
 DISTANCES TO PERFORMER AT PLASTIC LINE ON CL.  
 FROM FOLLOWSPOT 150'  
 FROM BALCONY RAIL 95'

	DIRECTED BY: DAVID GATLEY SCENERY BY: TONY FANNING LIGHTING BY: MARK NICOLAUGH PRODUCTION BY: DAVID GATLEY	<h2 style="text-align: center;">DON PASQUALE</h2> <p style="text-align: center;">FINAL SECTION</p>	REVISED: 4/9/2002	PAGE: 1 of 1	DIRECTOR OF PRODUCTION: RON ALLEN PRODUCTION MANAGER: JOHN FOSTER PRODUCTION CARPENTER: JOHN DAVID PETERS PRODUCTION ELECTRICIAN: J. ERIC KEEL
	CIVIC THEATRE SAN DIEGO, CA		DATE: 1/12/2002		



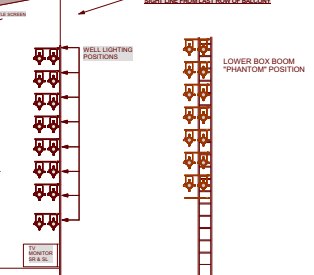
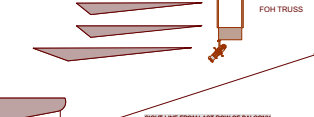






**NOTES TO SECTION:**  
 ALL OVERSTAGE ELECTRICS HAVE HARDWARE RACEWAYS. DANGER FOR CIRCUIT. NOFT PATCH ACCESS TO HARDWARE CIRCUITS ON S.H. PATCH BRIDGE U.S. & S.S. POSITION OF LADDERS ADJUSTABLE. BUT ALL LADDERS MUST TRIM FROM HPT. TO 45 FT.  
 HOUSE CYC IS PERMANENT ON LINESSET #88.  
 LIGHTING TOWERS HAVE PROJECTOR PLATFORMS AT 8', 12', 34'.

**LIGHT RACK TRACKS:**  
 EACH CONSISTS OF (1) 4 - RUNG LADDERS, (1) UNIT WIDE (2) 4 - RUNG LADDERS, (2) UNITS WIDE



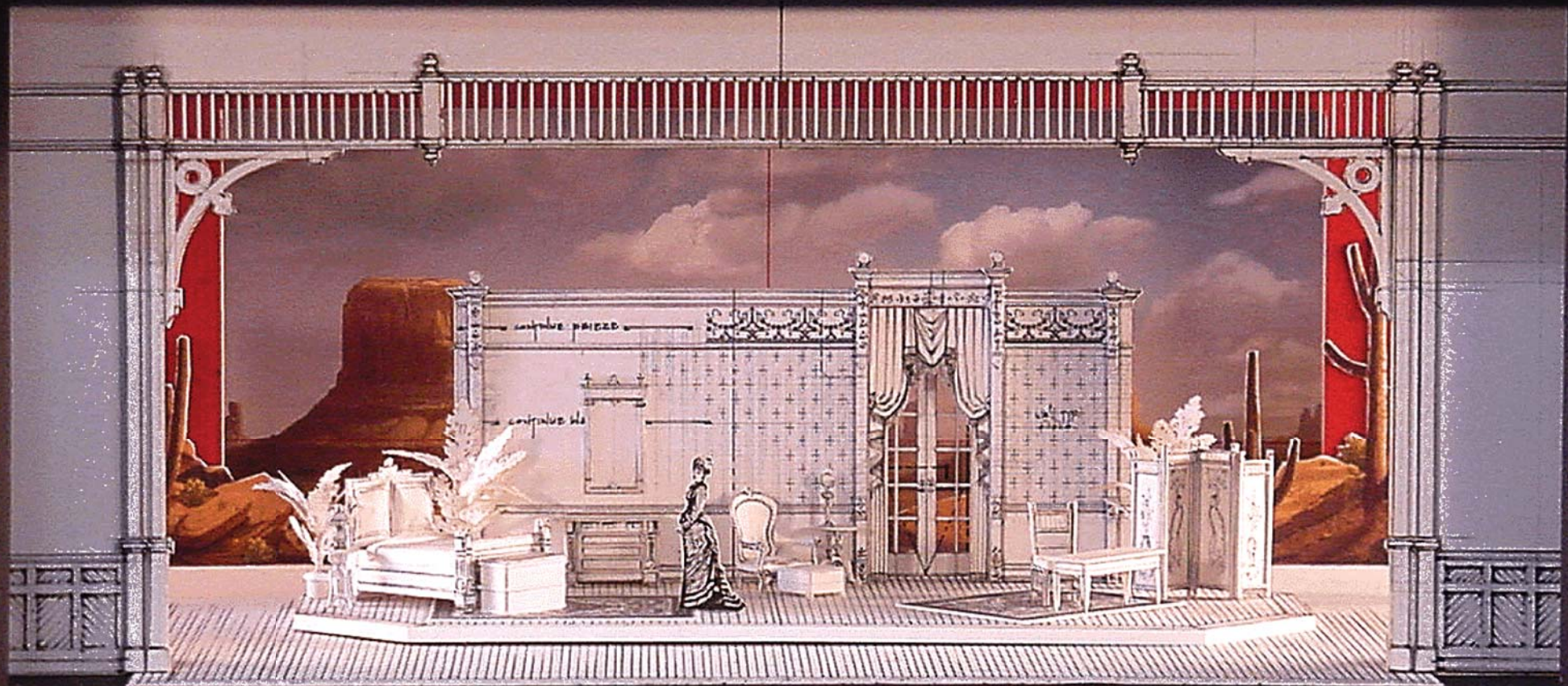
**NOTE:**  
 DISTANCES TO PERFORMER AT PLASTIC LINE ON C.L.  
 FROM FOLLOWSPOT 150'  
 FROM BALCONY RAIL 95'

	DIRECTED BY: DAVID GATLEY SCENERY BY: TONY FANNING LIGHTING BY: MARK NICOLAUGH PRODUCTION BY: DAVID GATLEY	<b>DON PASQUALE</b>	REVISED: 4/9/2002	DIRECTOR OF PRODUCTION: RON ALLEN PRODUCTION MANAGER: JOHN FOSTER PRODUCTION CARPENTER: JOHN DAVID PETERS PRODUCTION ELECTRICIAN: J. ERIC KEEL
	CIVIC THEATRE SAN DIEGO, CA	FINAL SECTION	SCALE: 1/4" = 1'-0" DATE: 1/12/2002	PAGE: 1 of 1

DRWNS 2/0



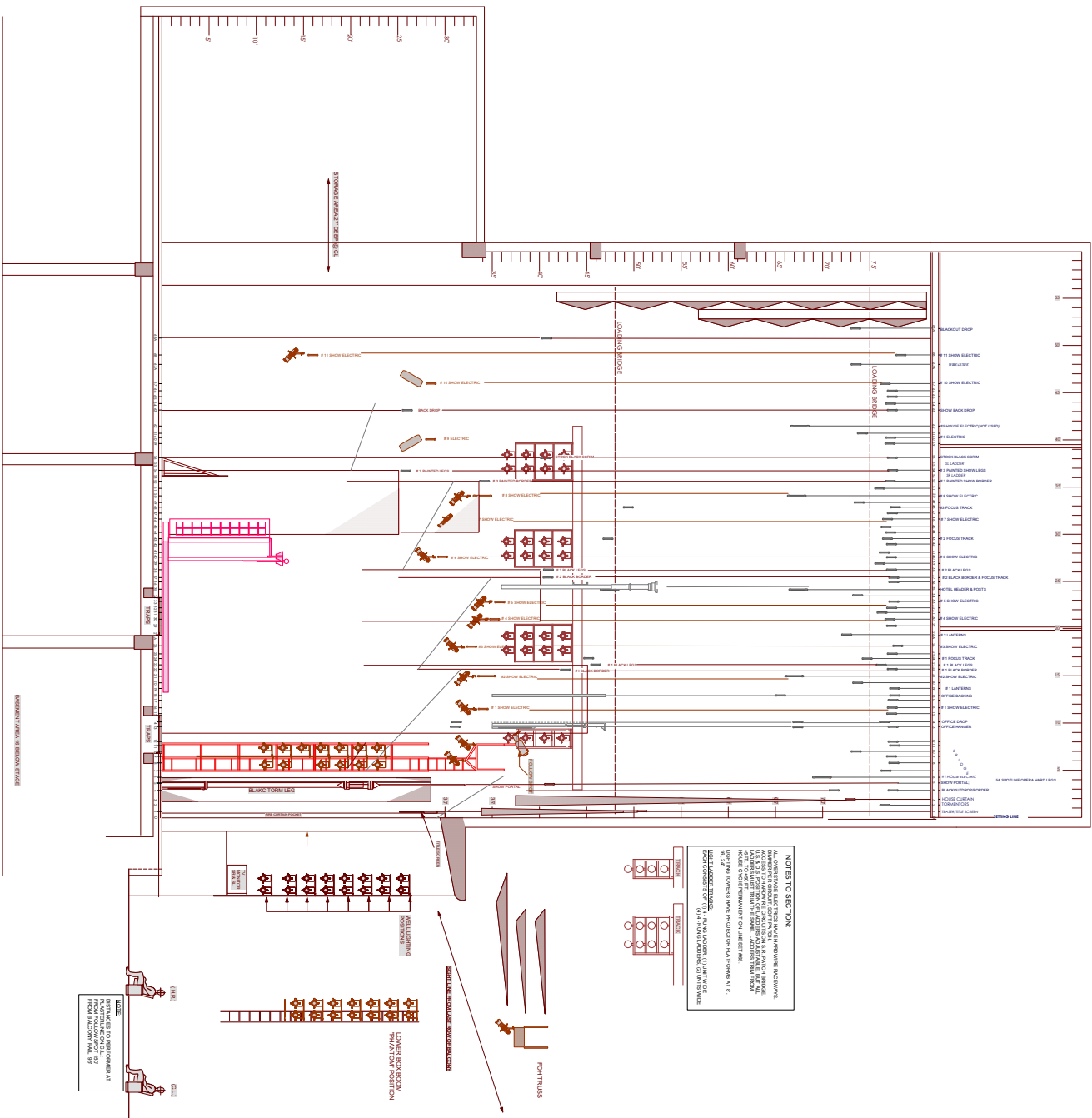
NORINA'S BEDROOM



"In that look was such paradise..."

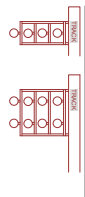






**NOTES TO SECTION**

ALL OVERSTAGE LIGHTING MOUNTED HANGING IN DIMMERS. ACCESS TO DIMMERS TO BE PROVIDED IN A MANICULATED MANNER. DIMMERS TO BE MOUNTED IN A MANNER THAT DOES NOT OBSTRUCT THE VIEW OF THE STAGE. DIMMERS TO BE MOUNTED IN A MANNER THAT DOES NOT OBSTRUCT THE VIEW OF THE STAGE. DIMMERS TO BE MOUNTED IN A MANNER THAT DOES NOT OBSTRUCT THE VIEW OF THE STAGE.



**NOTES**

DETAILS TO BE PROVIDED AT THE DISCRETION OF THE ARCHITECT.

**SAN DIEGO OPERA**

COMMISSIONED BY  
SAN DIEGO OPERA

DESIGNED BY  
DAVID GALEY

PRODUCTION BY  
DAVID GALEY

PRODUCTION LOCATION  
SAN DIEGO, CA

**DON PASQUALE**

FINAL SECTION

REVISED: 4/9/2002

SCALE: 1/4" = 1'-0"

DATE: 1/22/2002

1 of 1

ARCHITECTURAL PRODUCTION

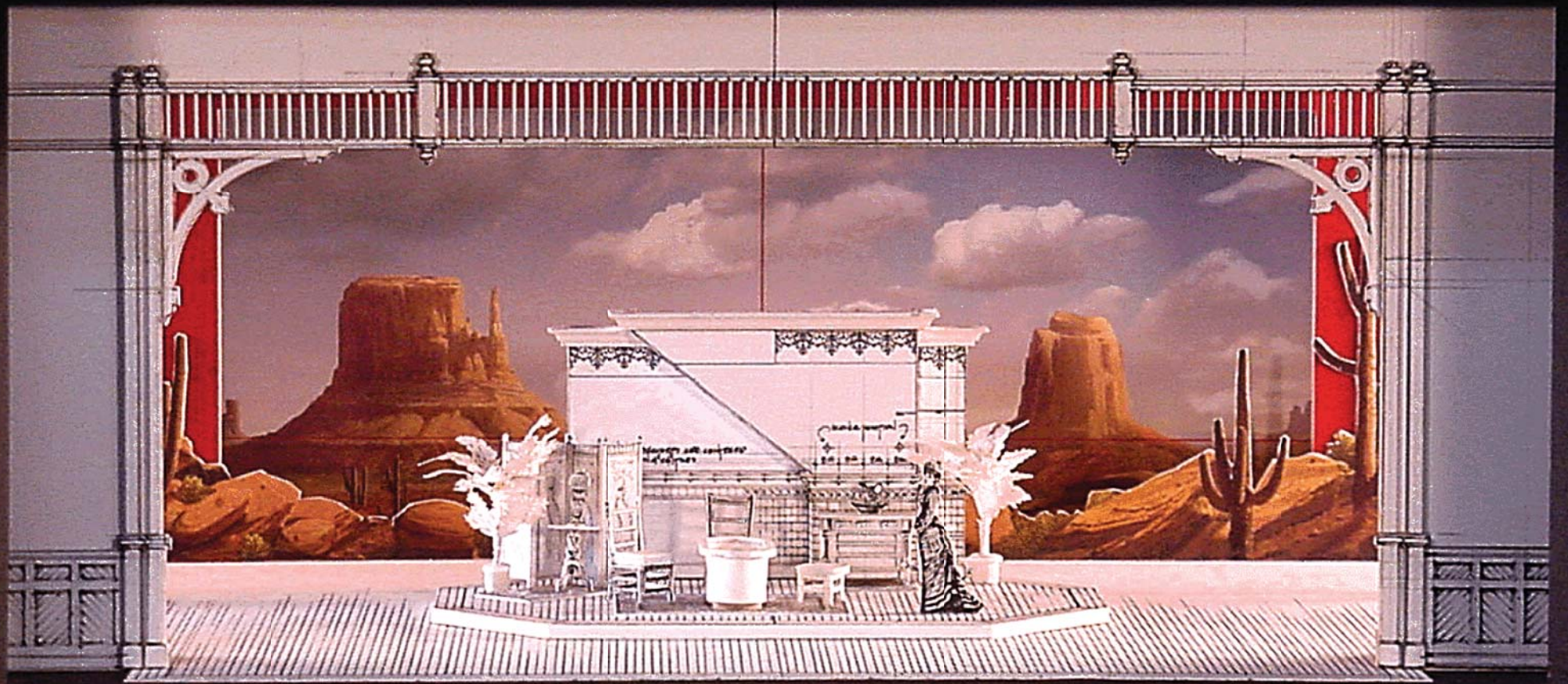
DAVID GALEY

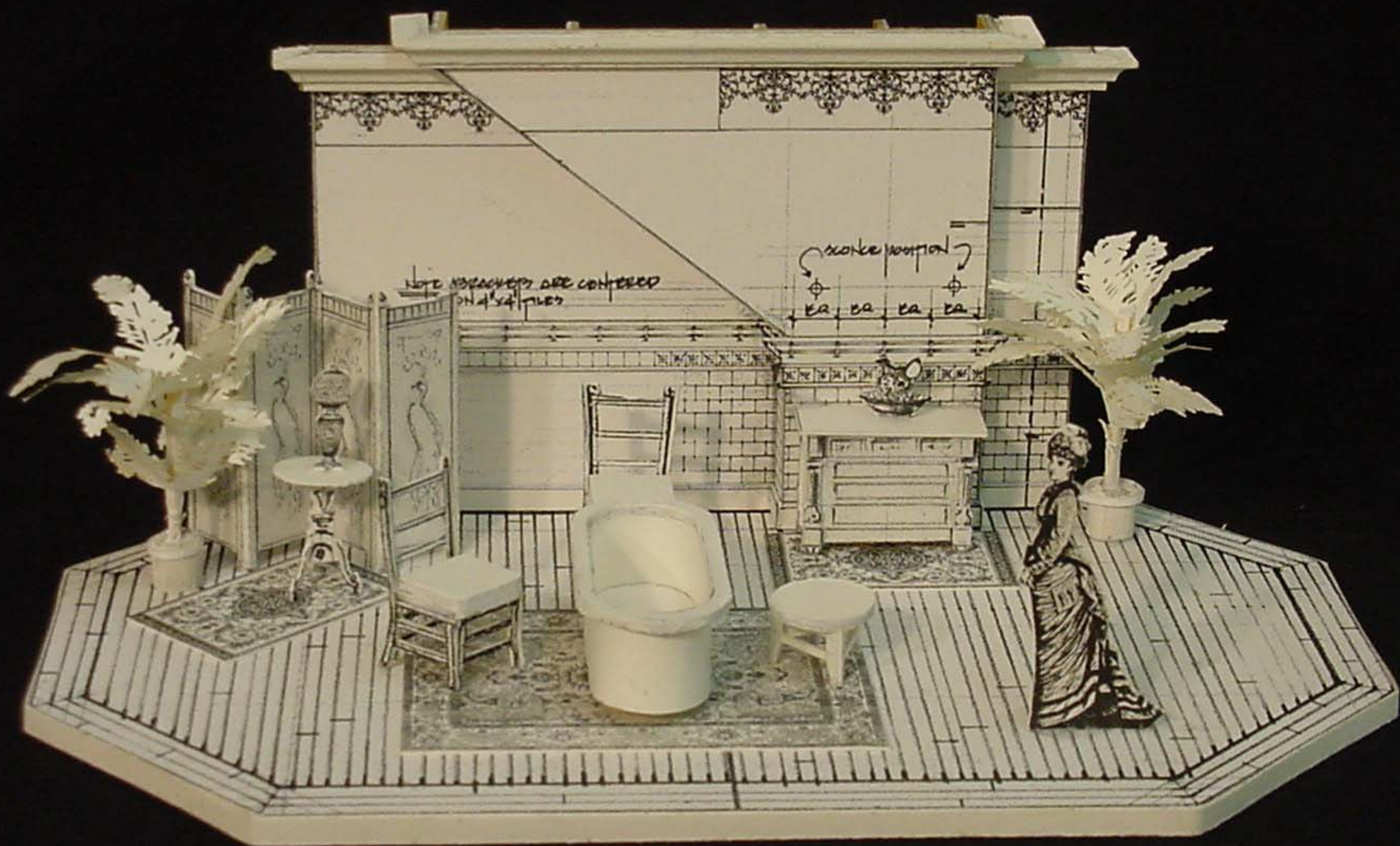
PRODUCTION DESIGNER

DAVID GALEY

PRODUCTION LOCATION

SAN DIEGO, CA







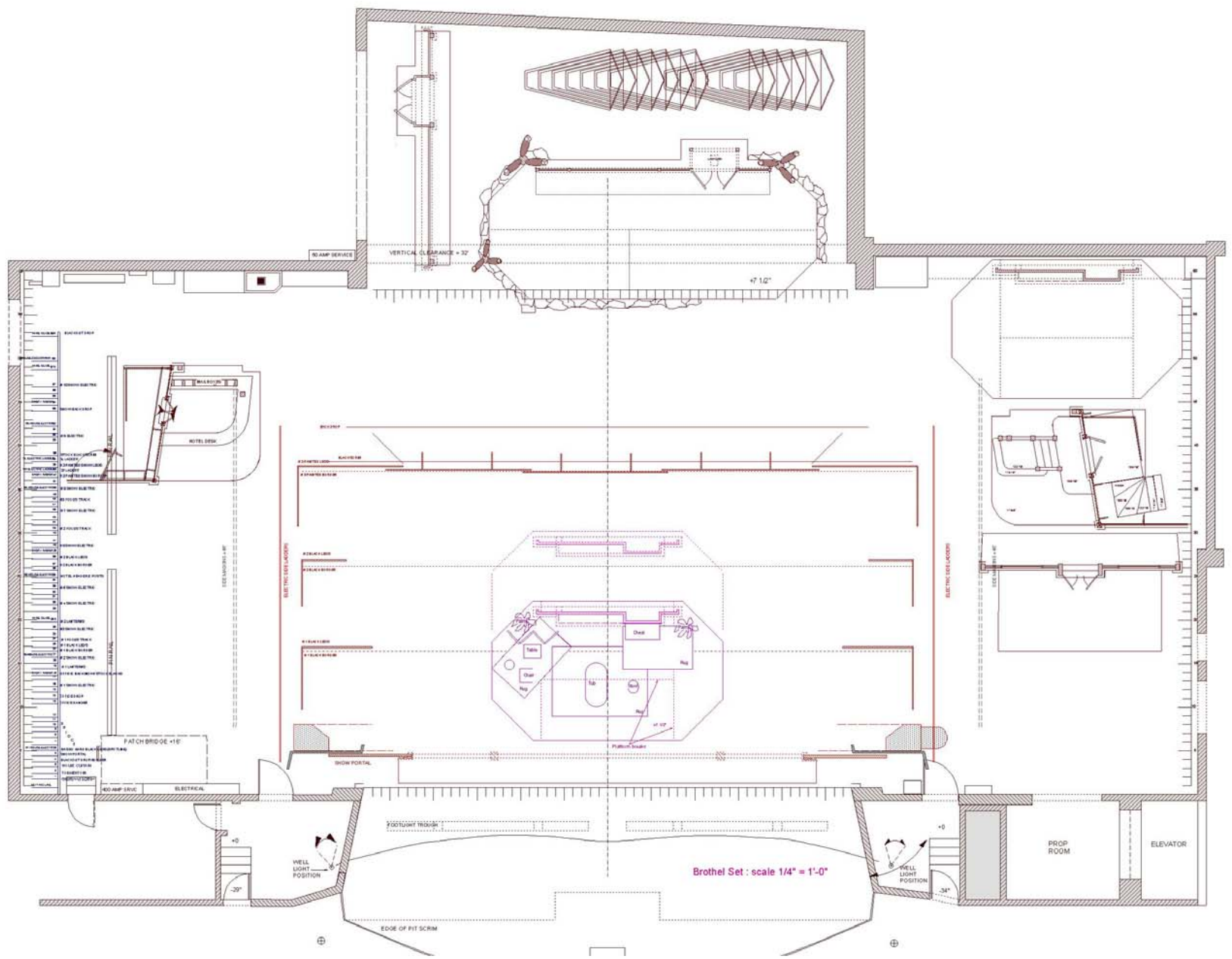
DIRECTOR OF PRODUCTION: BOB PULLER  
 GENERAL MANAGER: JAMES W. HARRIS  
 PRODUCTION DESIGNER: JAMES W. HARRIS  
 PROJECT COORDINATOR: JAMES W. HARRIS  
 PRODUCT DESIGNER: JAMES W. HARRIS  
 PROJECT MANAGER: JAMES W. HARRIS

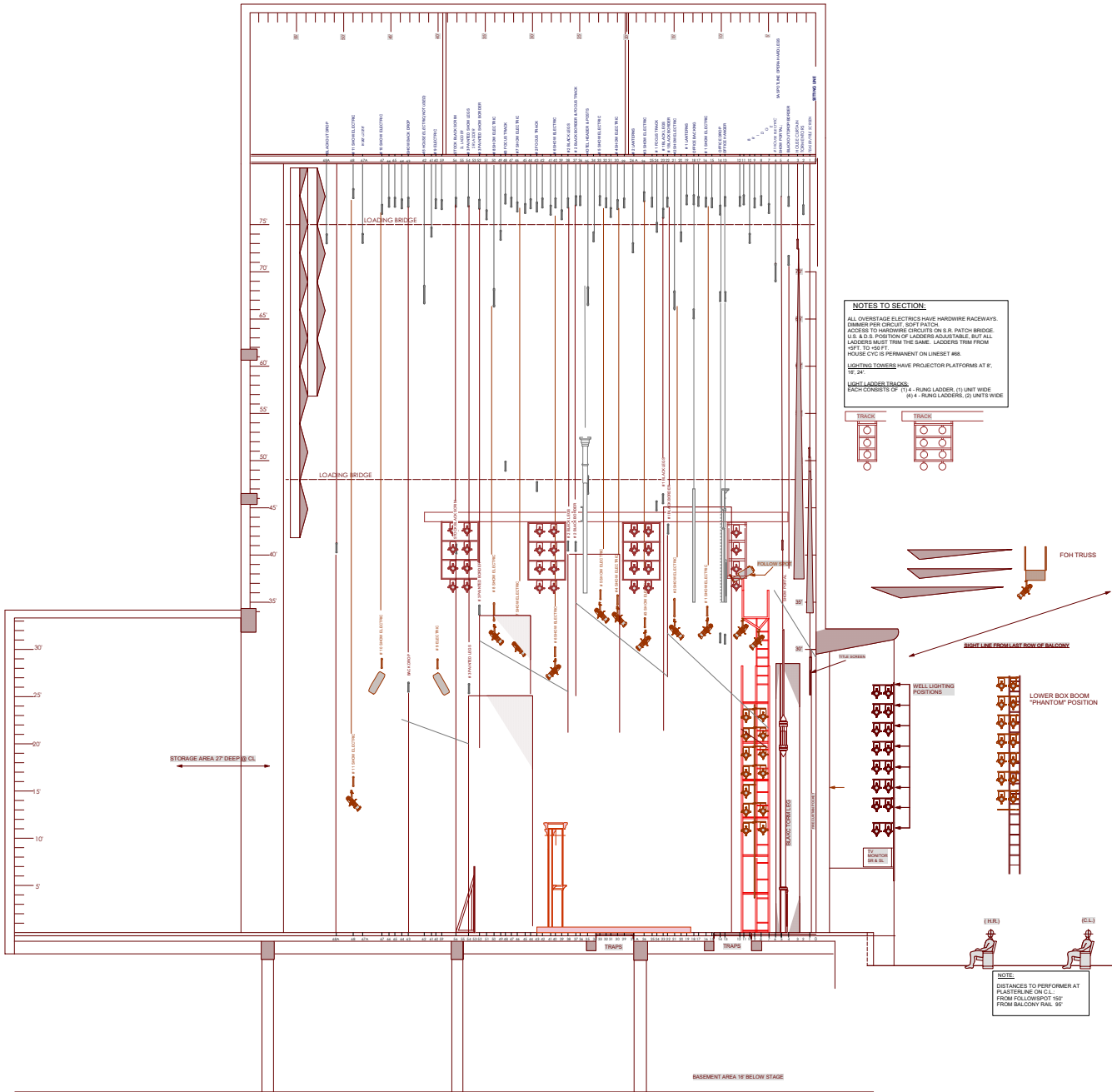
**FINAL**  
 SCALE: 1/4" = 1'-0"  
 DATE: 4/19/2002  
 PAGE: 1 of 1  
 DRAWING OF

Act 2 sc 1 Brothel set  
**DON PASQUALE**

DESIGNED BY: DAVID SUTCLIFF  
 DRAWN BY: DAVID SUTCLIFF  
 CHECKED BY: DAVID SUTCLIFF  
 APPROVED BY: DAVID SUTCLIFF  
 CIVIC THEATRE  
 SAN DIEGO, CA

**SAN DIEGO OPERA**





**NOTES TO SECTION:**  
 ALL OVERSTAGE ELECTRICS HAVE HARDWARE RACEWAYS. DANGER FOR CIRCUIT. NOFT PATCH ACCESS TO HARDWARE CIRCUITS ON S.H. PATCH BRIDGE U.S. & S.S. POSITION OF LADDERS ADJUSTABLE, BUT ALL LADDERS MUST TRIM FROM HPT. TO 45FT.  
 HOUSE CYC IS PERMANENT ON LINESSET #88.  
 LIGHTING TOWERS HAVE PROJECTOR PLATFORMS AT 8', 12', 34'.

**LIGHT LADDERS:**  
 EACH CONSISTS OF (1) 4 - RUNG LADDERS, (1) UNIT WIDE (2) 4 - RUNG LADDERS, (2) UNITS WIDE

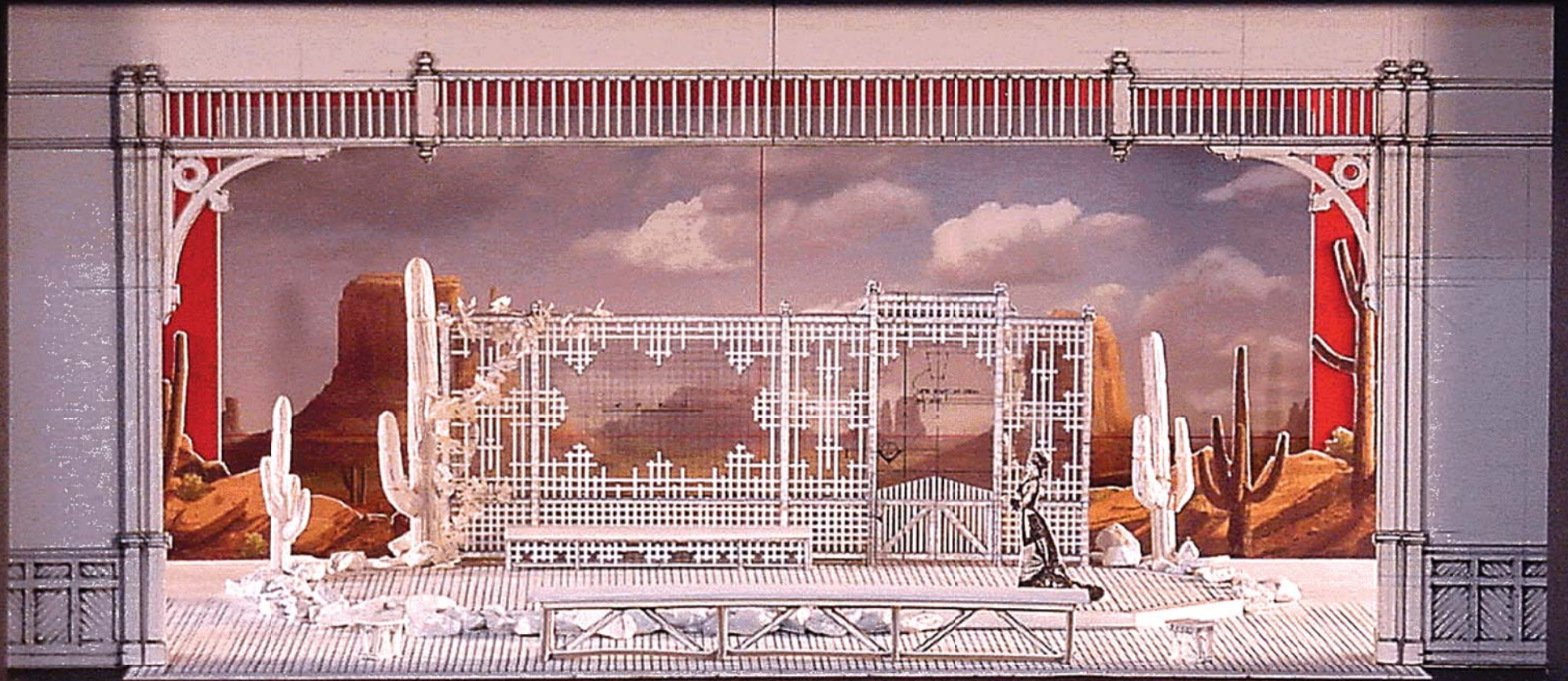


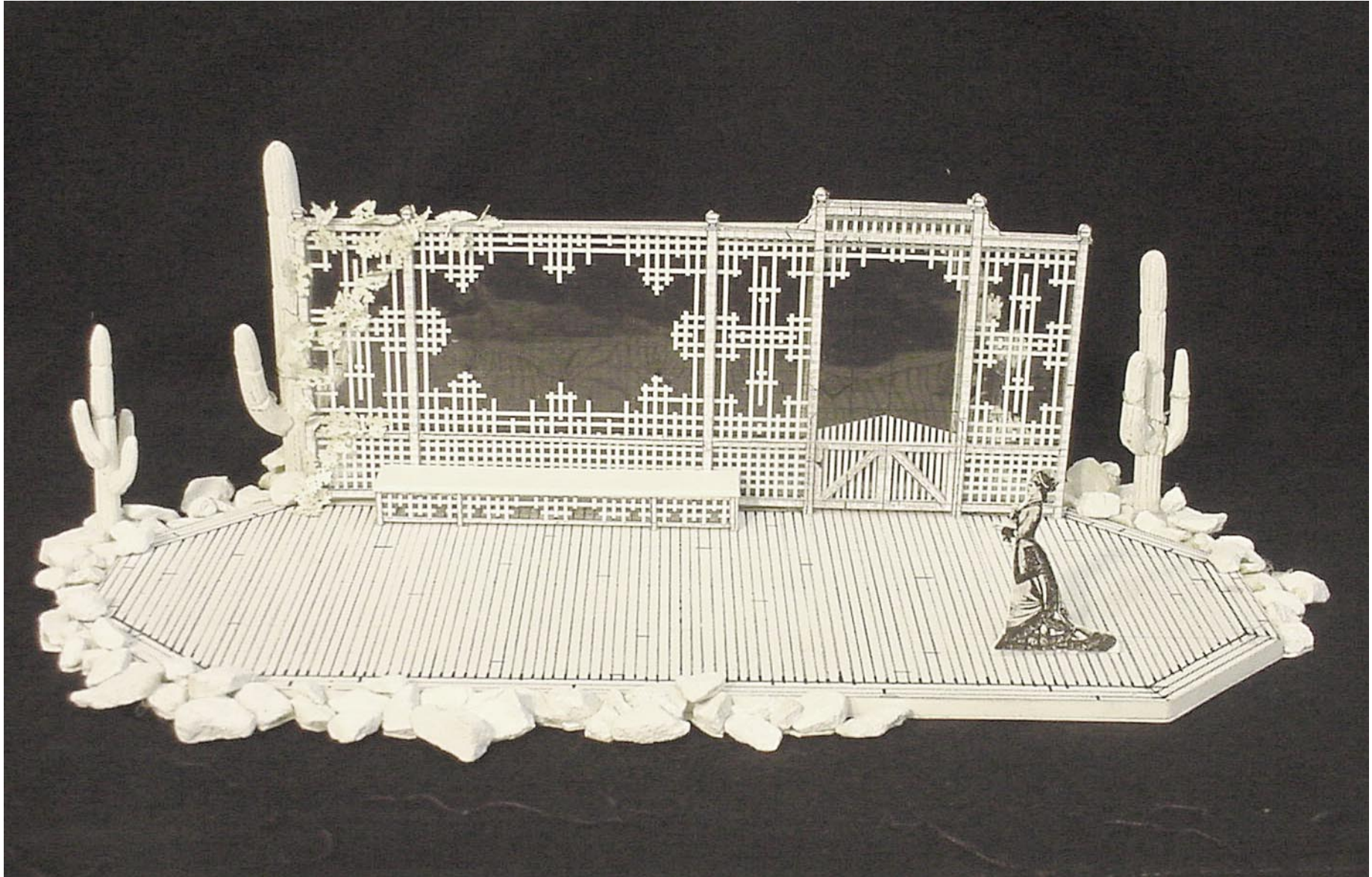
**NOTE:**  
 DISTANCES TO PERFORMER AT PLASTIC LINE ON CL:  
 FROM FOLLOWSPOT 150'  
 FROM BALCONY RAIL 95'

	DIRECTED BY: DAVID GATLEY SCENERY BY: TONY FANNING LIGHTING BY: MARK NICOLAUGH PRODUCTION BY: DAVID GATLEY	<h2 style="text-align: center;">DON PASQUALE</h2> <p style="text-align: center;">FINAL SECTION</p>	REVISED: 4/9/2002	PAGE: 1 of 1	DIRECTOR OF PRODUCTION: RON ALLEN PRODUCTION MANAGER: JOHN FOSTER PRODUCTION CARPENTER: JOHN DAVID PETERS PRODUCTION ELECTRICIAN: J. ERIC KEEL
	CIVIC THEATRE SAN DIEGO, CA		DATE: 1/12/2002		

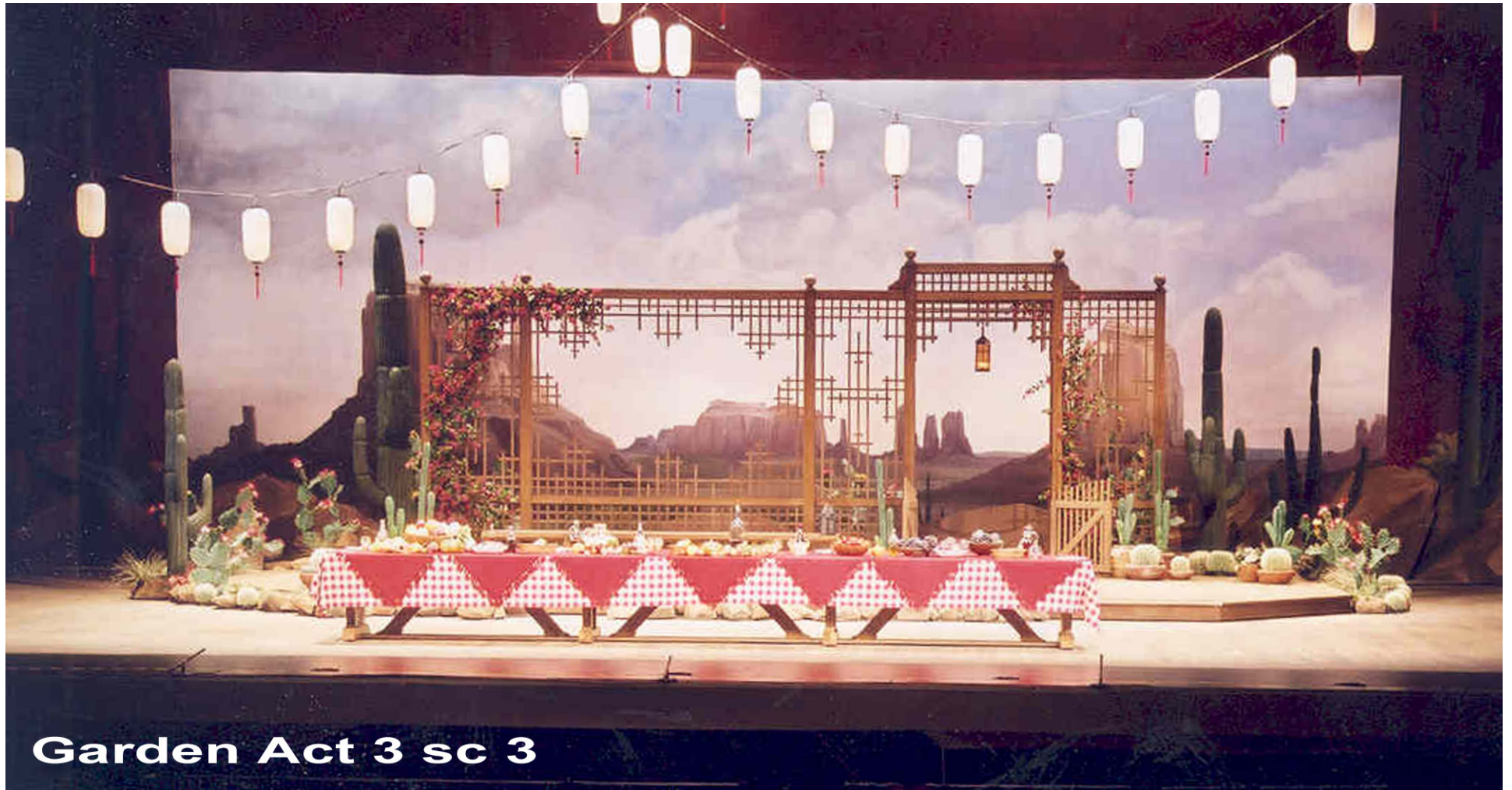


THE GARDEN

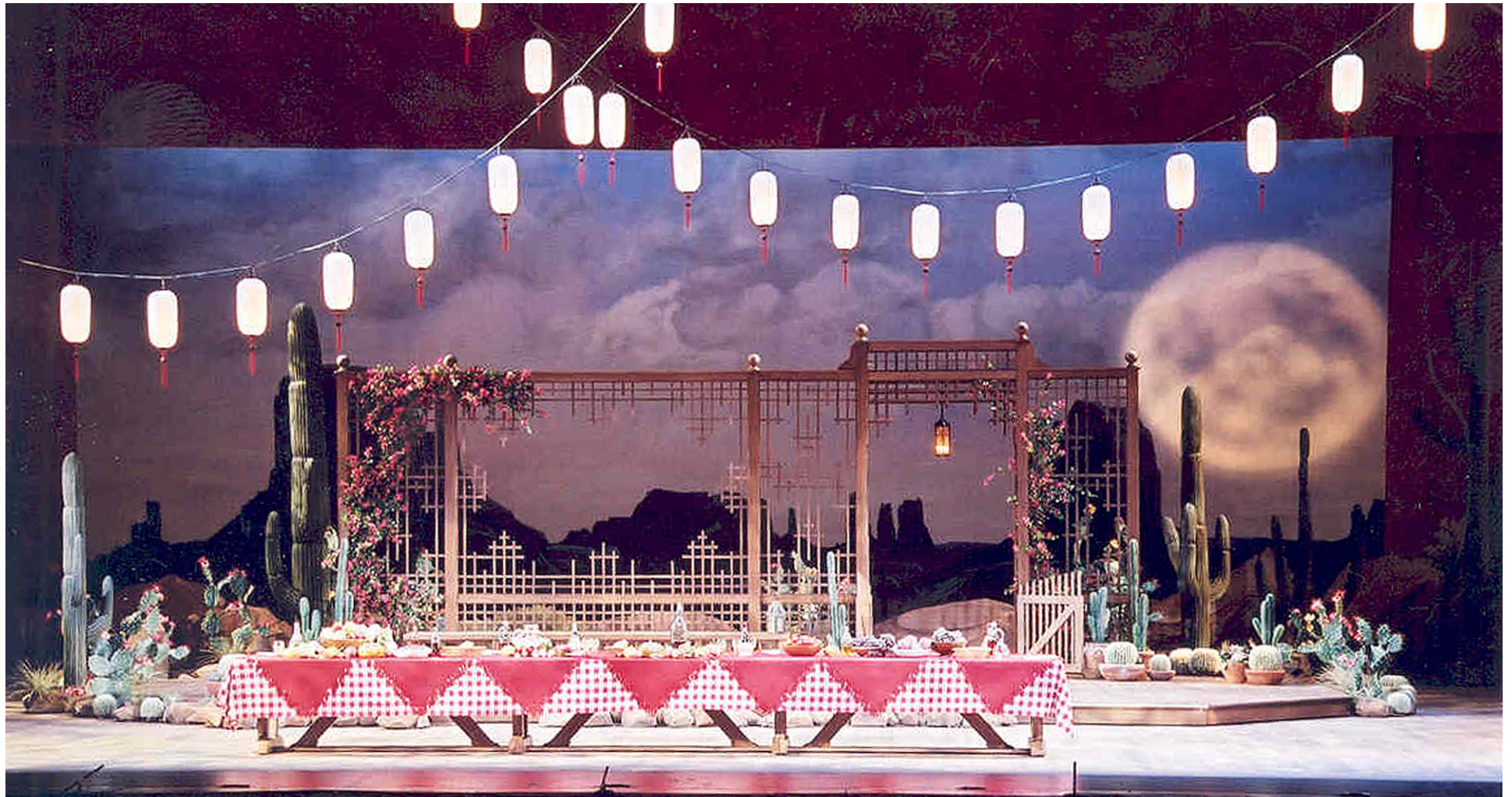








**Garden Act 3 sc 3**



**Garden Act 3 sc 3 Moon**



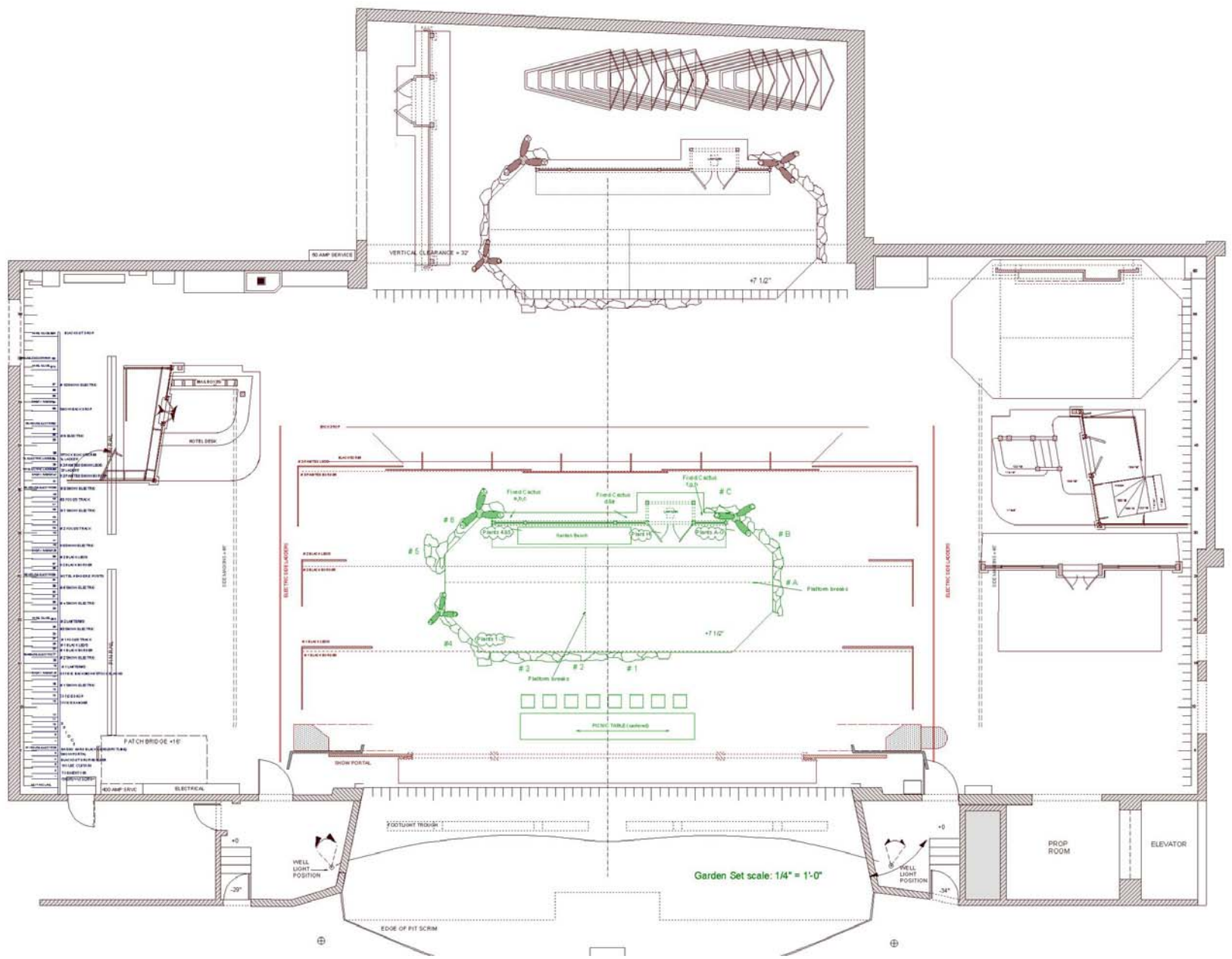
DIRECTOR OF PRODUCTION: BOB PULLER  
 DESIGNER: DON PASQUALE  
 PROJECT COORDINATOR: JANE BLAND FETTER  
 PRODUCT DESIGNER: JANE BLAND FETTER  
 PROJECT FILE REF: 1001.1001

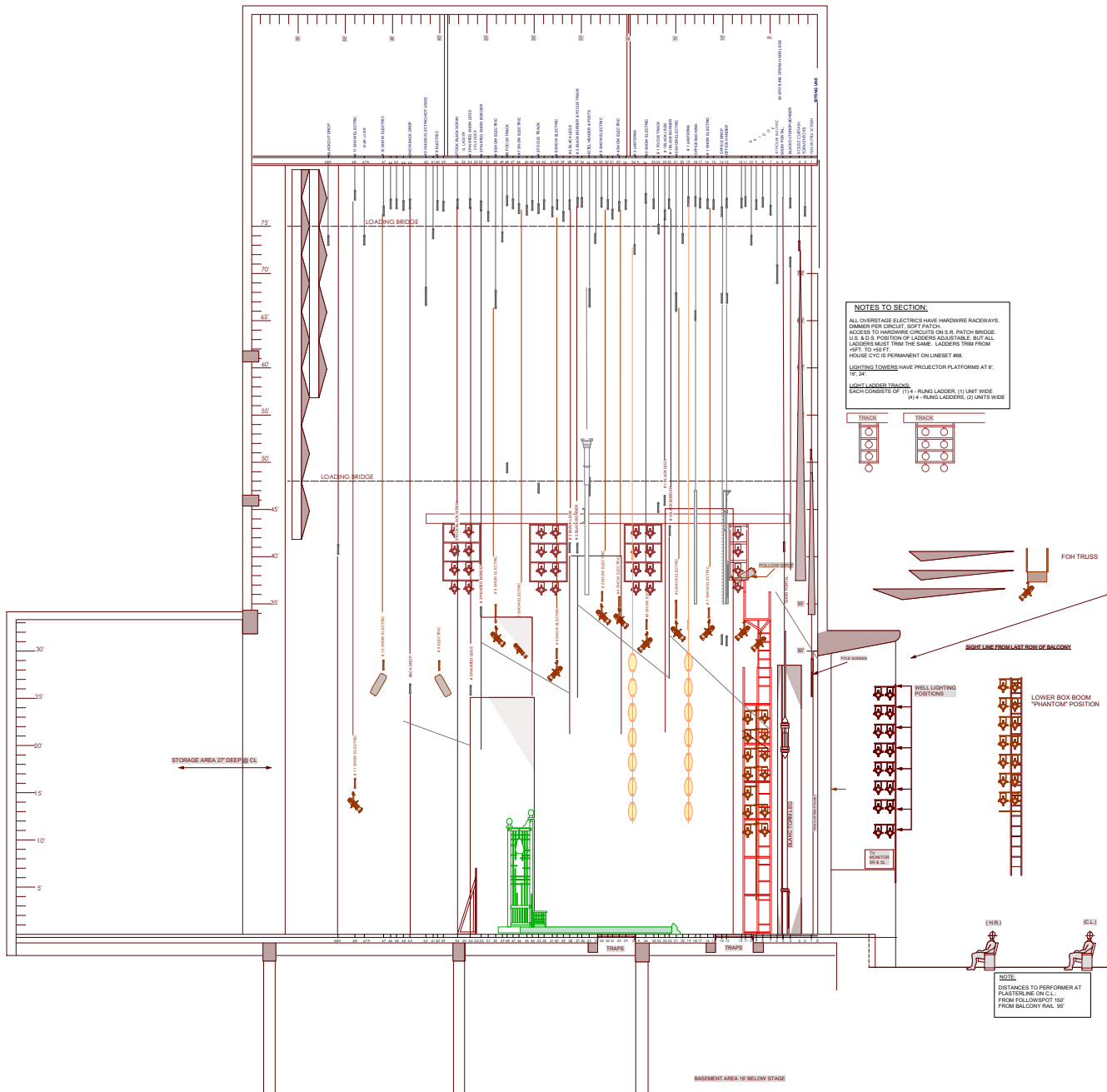
**FINAL**  
 SCALE: 1/4" = 1'-0"  
 DATE: 4/19/2002  
 PAGE: 1 of 1  
 DRAWING OF

Act 3 sc 3 Garden Set  
**DON PASQUALE**

DESIGNED BY: DON PASQUALE  
 DESIGNED BY: DON PASQUALE  
 CIBC THEATRE  
 SAN DIEGO, CA

**SAN DIEGO OPERA**





**NOTES TO SECTION:**  
 ALL OVERSTAGE ELECTRICS HAVE HARDWARE RACEWAYS. DANGER FOR CIRCUIT. NOFT PATCH ACCESS TO HARDWARE CIRCUITS ON S.H. PATCH BRIDGE U.S. & S.S. POSITION OF LADDERS ADJUSTABLE, BUT ALL LADDERS MUST TRIM FROM HPT. TO 45FT. HOUSE CYC IS PERMANENT ON LINESSET #88.  
 LIGHTING TOWERS HAVE PROJECTOR PLATFORMS AT 8', 12', 34'.  
 LIGHT LADDER TRACKS:  
 EACH CONSISTS OF (1) 4 - RUNG LADDERS, (1) UNIT WIDE (2) 4 - RUNG LADDERS, (2) UNITS WIDE



**NOTE:**  
 DISTANCES TO PERFORMER AT PLASTIC LINE ON CL.  
 FROM FOLLOWSPOT 150'  
 FROM BALCONY RAIL 95'

	DIRECTED BY: DAVID GATLEY SCENERY BY: TONY FANNING LIGHTING BY: MARK MCALLOUGH PRODUCTION BY: DAVID GATLEY	<h2 style="text-align: center;">DON PASQUALE</h2> <p style="text-align: center;">FINAL SECTION</p>	REVISED: 4/9/2002	PAGE: 1 of 1	DIRECTOR OF PRODUCTION: RON ALLEN PRODUCTION MANAGER: JOHN FOSTER PRODUCTION STAGE MANAGER: MARY Y. PETERS PRODUCTION CARPENTER: JOHN DAVID PETERS PRODUCTION ELECTRICIAN: J. ERIC KEEL
	CIVIC THEATRE SAN DIEGO, CA		DATE: 1/12/2002		

DRWNS 2/0



SAN DIEGO OPERA PRESENTS  
"DON PASQUALE"

DIRECTED BY DAVID CATHELY  
DESIGNED BY TONY KANNING

ARIZONA BACKDROP