



## DON QUIXOTE 2009

**DIRECTOR:** IAN D. CAMPBELL  
**CONDUCTOR:** KAREN KELTNER  
**CHOREOGRAPHER:** NICOLA BOWIE

**SCENERY DESIGN BY:** RALPH FUNICELLO  
**COSTUME DESIGN BY:** MISSY WEST  
**LIGHTING DESIGN BY:** MARIE B. BARRETT  
**WIG & MAKEUP DESIGN BY:** STEVEN BRYANT

**DIRECTOR OF PRODUCTION:** RON ALLEN  
**PRODUCTION MANAGER:** JOAN FOSTER  
**ASSISTANT DIRECTOR:** KETURAH STICKANN  
**PRODUCTION STAGE MANAGER:** MARY Y. PETERS  
**PRODUCTION CARPENTER:** JOHN DAVID PETERS  
**ASSISTANT LIGHTING DESIGNER:** MICHAEL PAOLINI

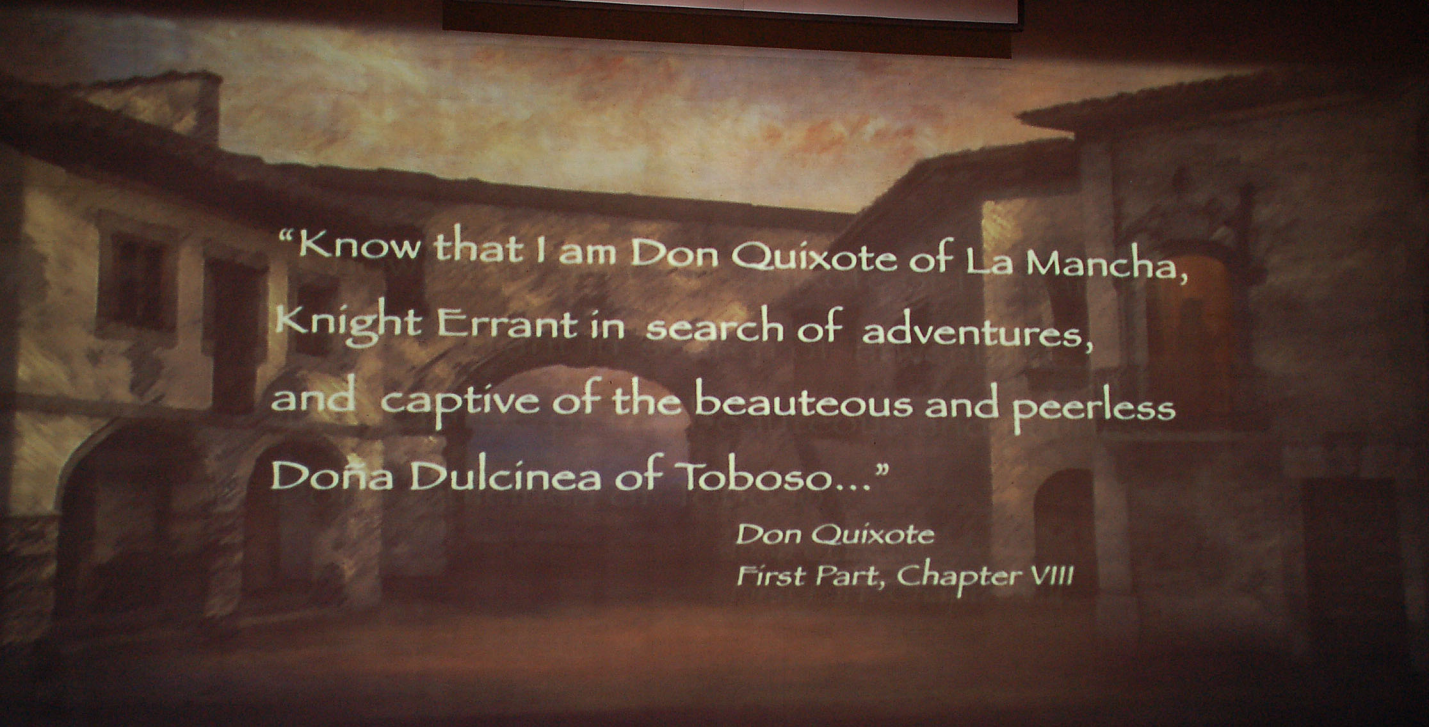
**SCENERY & COSTUMES  
CONSTRUCTED BY:** SAN DIEGO OPERA

**SAN DIEGO OPERA**  
1200 3rd Ave, 18th Floor  
SAN DIEGO, CA.  
92101

**MAIN OFFICE:** 619-232-7636  
**FAX:** 619-231-6915  
**SCENIC STUDIO:** 619-232-5911  
**SCENIC STUDIO FAX :** 619-232-1925

[WWW.SDOPERA.COM](http://WWW.SDOPERA.COM)





“Know that I am Don Quixote of La Mancha,  
Knight Errant in search of adventures,  
and captive of the beautiful and peerless  
Doña Dulcinea of Toboso...”

*Don Quixote*

*First Part, Chapter VIII*











These doors and windows are practical

This wall is cut.

These doors and windows are NOT PRACTICAL

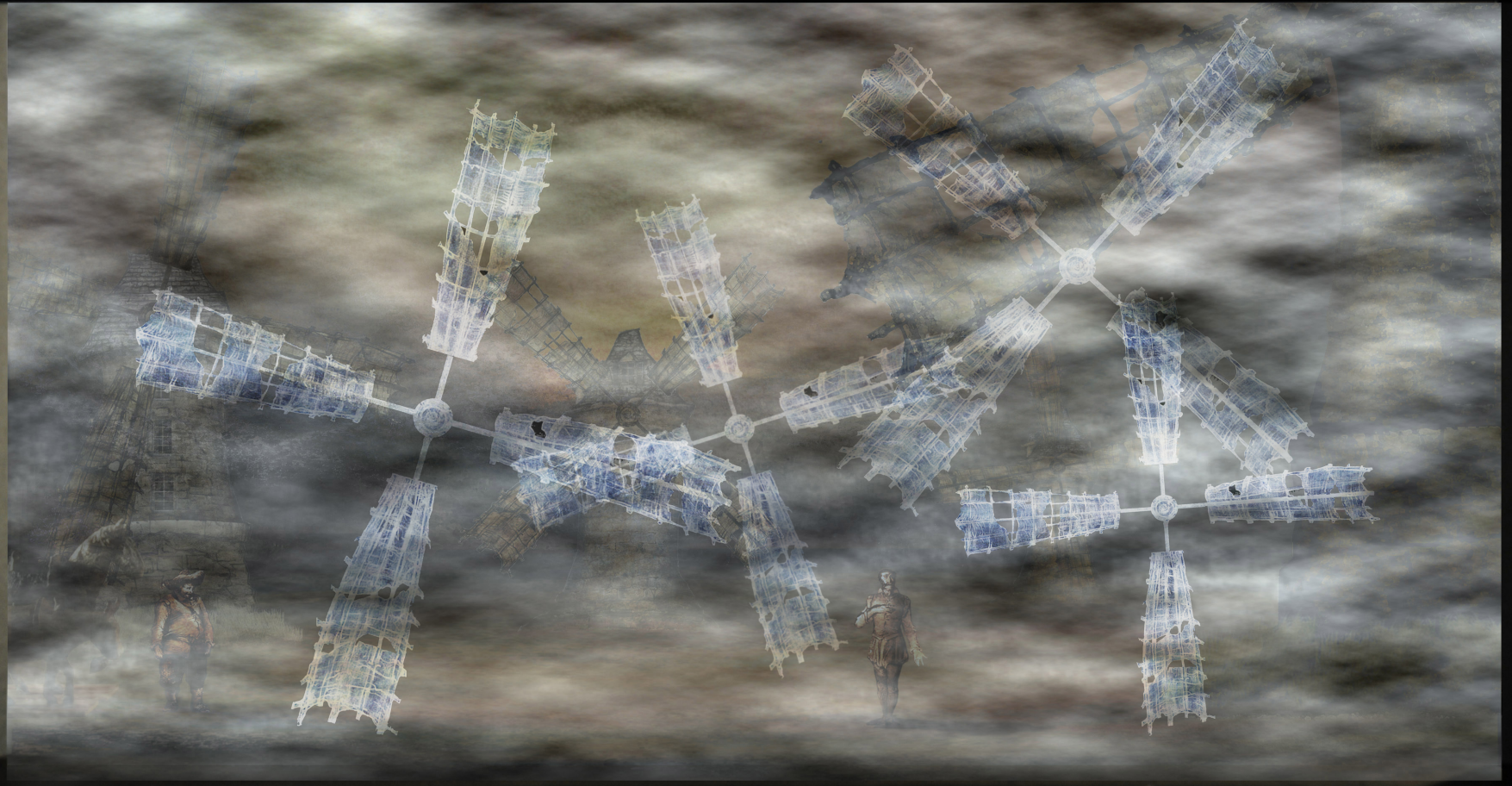
FINAL  
Revision

“What giants?” said Sancho Panza  
“Those you see over there,” replied his master,  
“with the long arms; sometimes they are almost  
two leagues long.”

Sancho responded, “Those things that appear over there  
aren’t giants but windmills...”

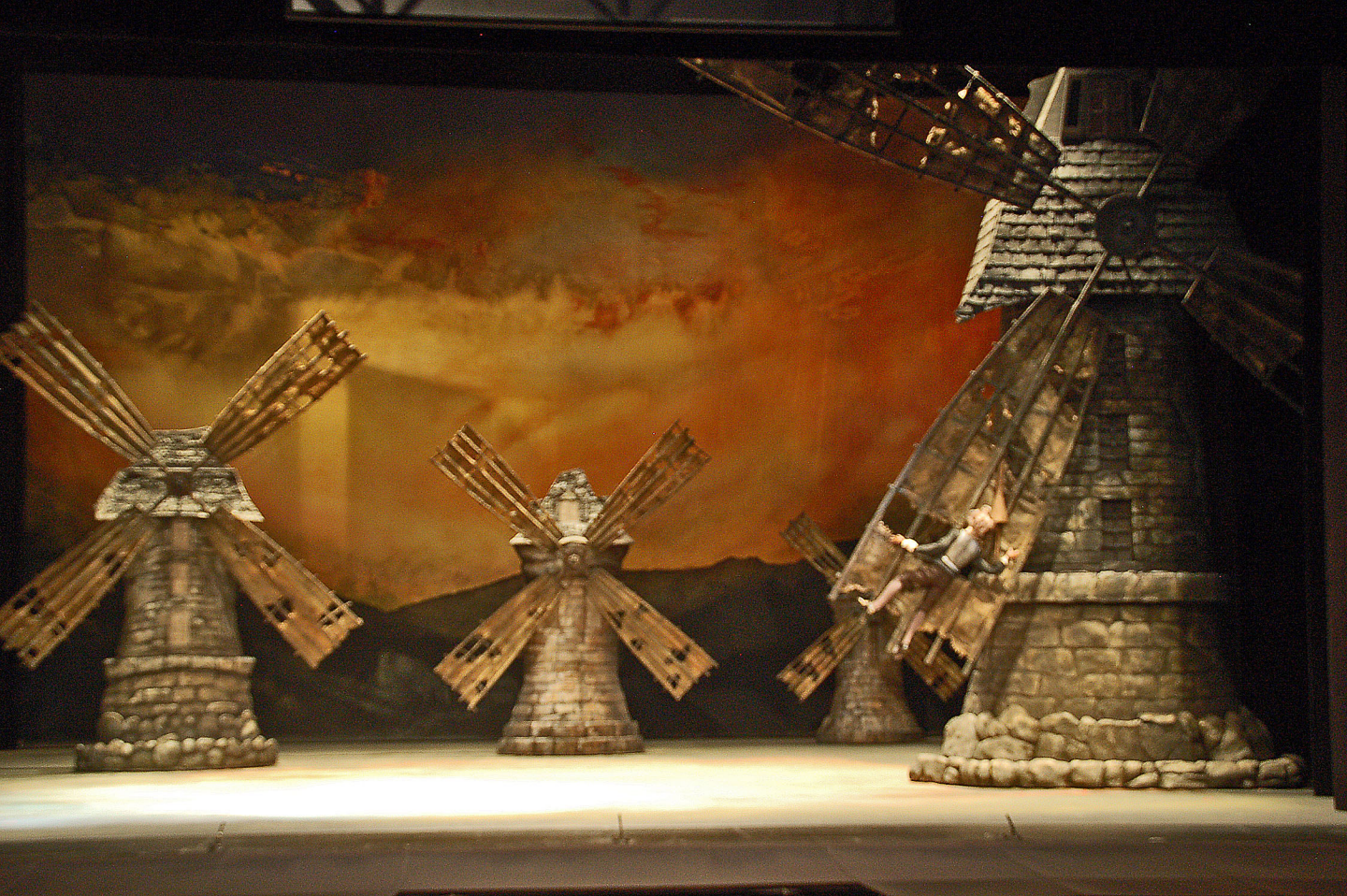
*Don Quixote*  
*First Part, Chapter VIII*











“Chivalry is a religion, and there are sainted Knights in Glory.”

“Yes,” responded Sancho, “but I’ve heard there are more friars in heaven than Knights Errant.”

“That is True,” responded Don Quixote,  
“because the number of religious is greater  
than the number of Knights.”

*Don Quixote*

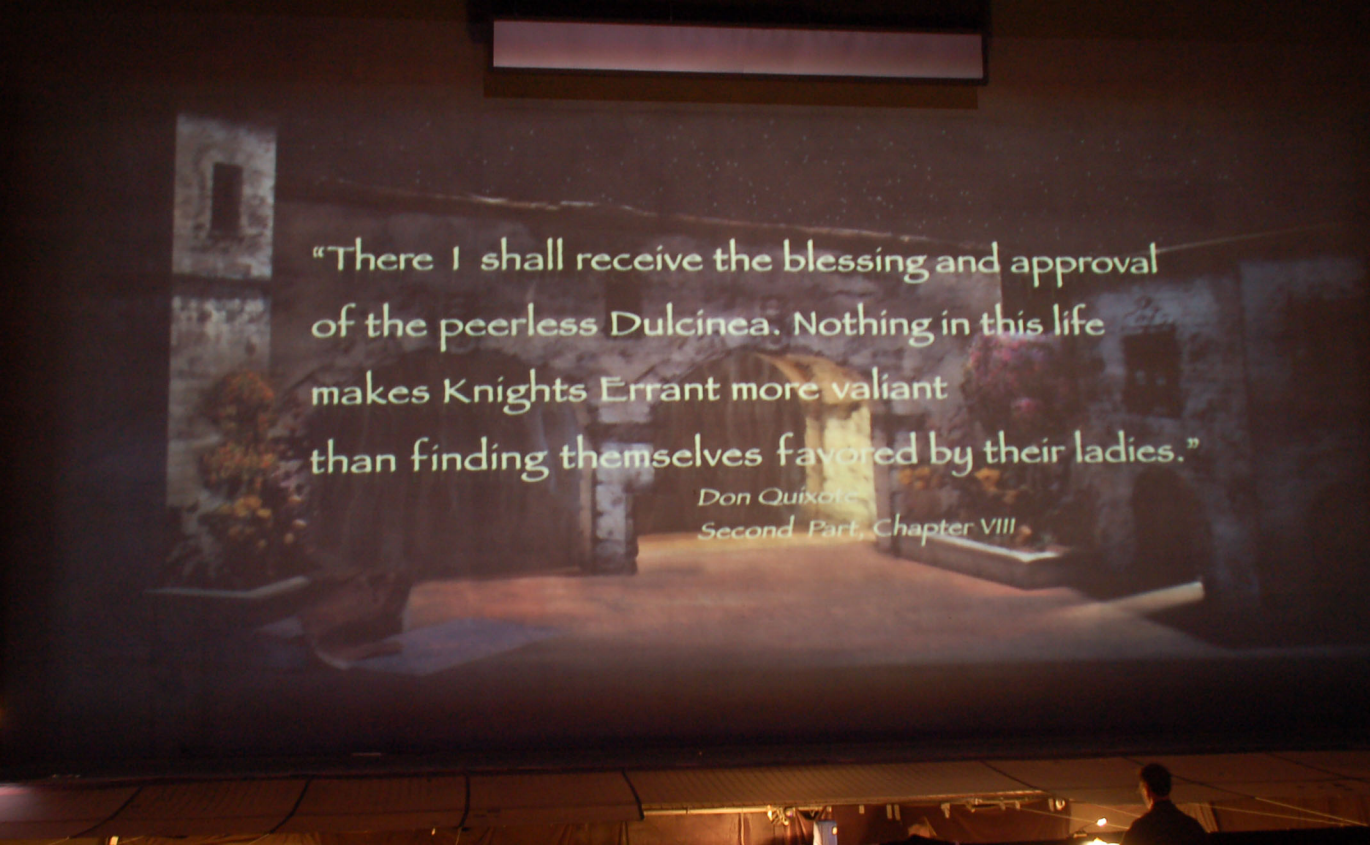
*Second Part, Chapter VIII*











“There I shall receive the blessing and approval  
of the peerless Dulcinea. Nothing in this life  
makes Knights Errant more valiant  
than finding themselves favored by their ladies.”

*Don Quixote*  
*Second Part, Chapter VIII*











The weeping Sancho said, "Don't Die Señor:  
your grace should take my advice and live for many years,  
because the greatest madness a man can commit in this life  
is to let himself die, just like that, without anybody killing him  
or any other hands ending his life except those of melancholy."

*Don Quixote.*

*Second Part, Chapter LXXIV*







**SAN DIEGO OPERA**  
WE MAKE MUSIC WORTH SEEING

**DON QUIXOTE**

**ACT 1 FLOORPLAN**

DATE: 05/06/2008

SCALE: 1/4"=1'-0"

REVISED: **FINAL 2009**

DIRECTED BY: IAN D. CAMPBELL  
SCENERY BY: RALPH FUNICELLO  
LIGHTING BY: MARIE B. BARRETT  
PRODUCTION BY: CAMPBELL/FUNICELLO  
SCENERY FROM: SAN DIEGO OPERA

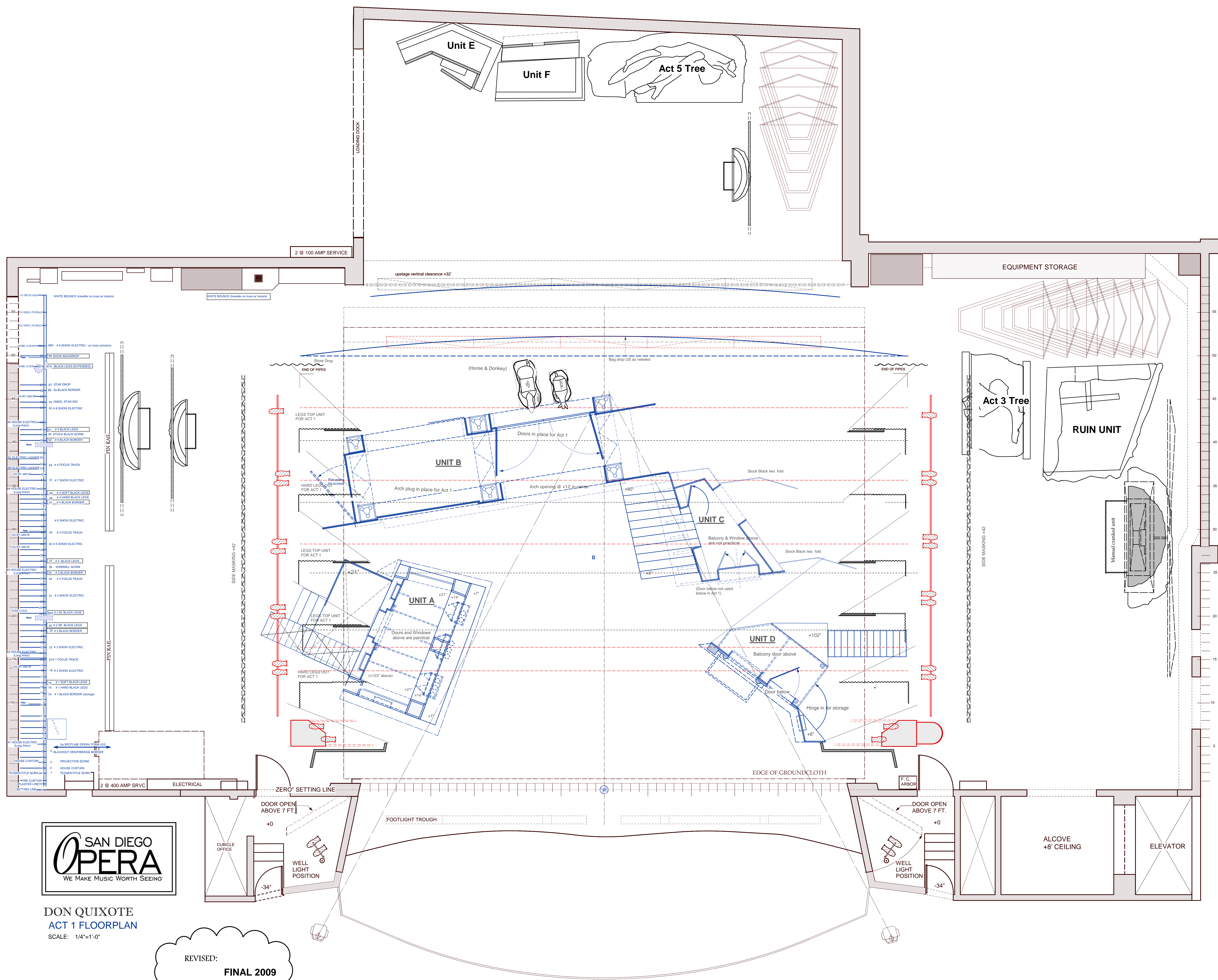
DIRECTOR OF PRODUCTION: RON ALLEN  
PRODUCTION MANAGER: JOAN FOSTER  
PRODUCTION STAGE MANAGER: MARY Y. PETERS  
PRODUCTION CARPENTER: JOHN DAVID PETERS  
ASSISTANT LIGHTING DESIGNER: MICHAEL PAOLINI

**SAN DIEGO OPERA**  
1200 3rd Ave, 18th Floor  
SAN DIEGO, CA 92101

MAIN OFFICE: 619-232-7636  
FAX: 619-231-6915  
SCENG STUDIO: 619-232-6911  
SCENG STUDIO FAX: 619-232-1925

**CIVIC THEATRE**  
3rd & C Street  
SAN DIEGO, CA 92101

PRODUCTION OFFICE: 619-237-8254  
STAGE PHONE: 619-232-4751  
PRODUCTION FAX: 619-237-0469

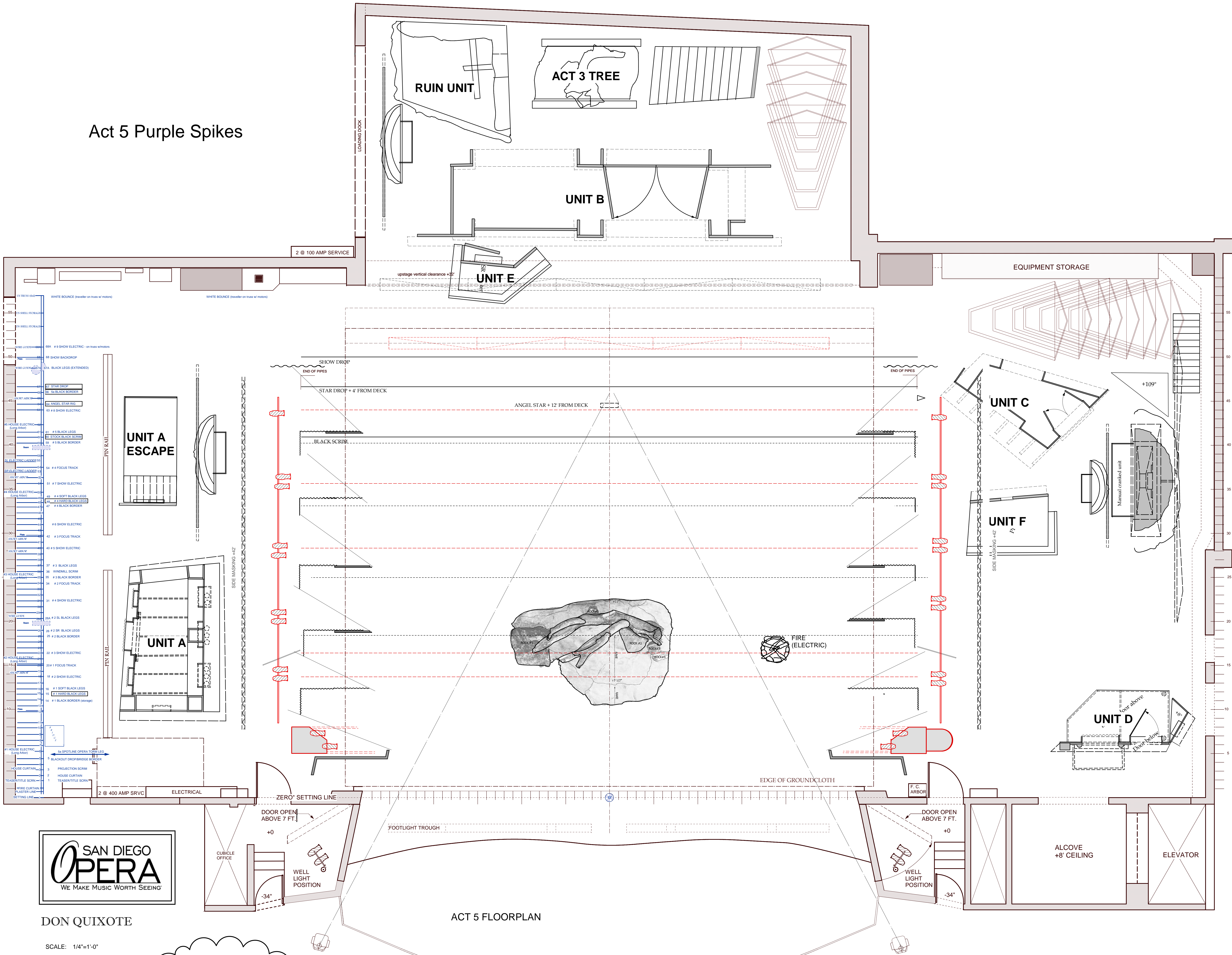


**DON QUIXOTE**  
**ACT 1 FLOORPLAN**  
SCALE: 1/4"=1'-0"

REVISED:  
**FINAL 2009**



Act 5 Purple Spikes



DON QUIXOTE

SCALE: 1/4"=1'-0"

REVISED:  
FINAL 2009

**SAN DIEGO OPERA**  
WE MAKE MUSIC WORTH SEEING

**DON QUIXOTE**

**ACT 5 FLOORPLAN**

DATE: 05/06/2008

SCALE: 1/4"=1'-0" PAGE: 5 of 11

REVISED: **FINAL 2009**

DIRECTED BY: IAN D. CAMPBELL  
SCENERY BY: RALPH FUNICELLO  
LIGHTING BY: MARIE B. BARRETT  
PRODUCTION BY: CAMPBELL/FUNICELLO  
SCENERY FROM: SAN DIEGO OPERA

DIRECTOR OF PRODUCTION: RON ALLEN  
PRODUCTION MANAGER: JOAN FOSTER  
PRODUCTION STAGE MANAGER: MARY Y. PETERS  
PRODUCTION CARPENTER: JOHN DAVID PETERS  
ASSISTANT LIGHTING DESIGNER: MICHAEL PAOLINI

**SAN DIEGO OPERA**  
1200 3rd Ave, 18th Floor  
SAN DIEGO, CA 92101

MAIN OFFICE: 619-232-7636  
FAX: 619-231-6915  
SCENG STUDIO: 619-232-6911  
SCENG STUDIO FAX: 619-232-1925

**CIVIC THEATRE**  
3rd & C Street  
SAN DIEGO, CA 92101

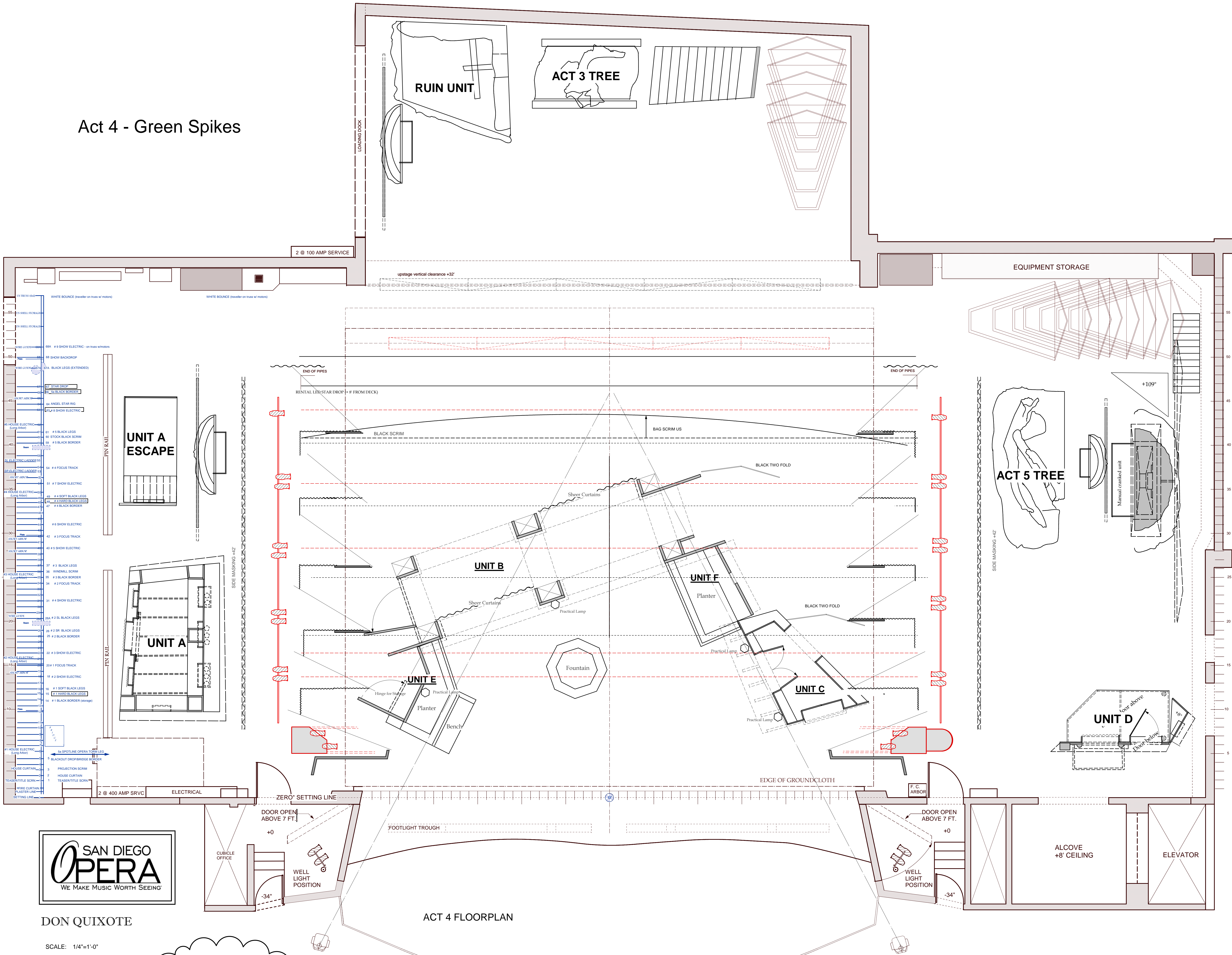
PRODUCTION OFFICE: 619-237-8254  
STAGE PHONE: 619-232-4751  
PRODUCTION FAX: 619-237-0466

ACT 5 FLOORPLAN

DON QUIXOTE

ACT 5 FLOORPLAN

Act 4 - Green Spikes



**SAN DIEGO OPERA**  
WE MAKE MUSIC WORTH SEEING

---

**DON QUIXOTE**

---

**ACT 4 FLOORPLAN**

---

DATE: 05/06/2008

SCALE: 1/4"=1'-0"      PAGE: 4 of 11

REVISED: **FINAL 2009**

---

DIRECTED BY: IAN D. CAMPBELL  
 SCENERY BY: RALPH FUNICELLO  
 LIGHTING BY: MARIE B. BARRETT  
 PRODUCTION BY: CAMPBELL/FUNICELLO  
 SCENERY FROM: SAN DIEGO OPERA

---

DIRECTOR OF PRODUCTION: RON ALLEN  
 PRODUCTION MANAGER: JOAN FOSTER  
 PRODUCTION STAGE MANAGER: MARY Y. PETERS  
 PRODUCTION CARPENTER: JOHN DAVID PETERS  
 ASSISTANT LIGHTING DESIGNER: MICHAEL PAOLINI

---

**SAN DIEGO OPERA**  
 1200 3rd Ave, 18th Floor  
 SAN DIEGO, CA  
 92101

MAIN OFFICE: 619-232-7636  
 FAX: 619-231-6915  
 SCENIC STUDIO: 619-232-6911  
 SCENIC STUDIO FAX: 619-232-1925

---

**CIVIC THEATRE**  
 3rd & C Street  
 SAN DIEGO, CA  
 92101

PRODUCTION OFFICE: 619-237-8254  
 STAGE PHONE: 619-232-4751  
 PRODUCTION FAX: 619-237-0466

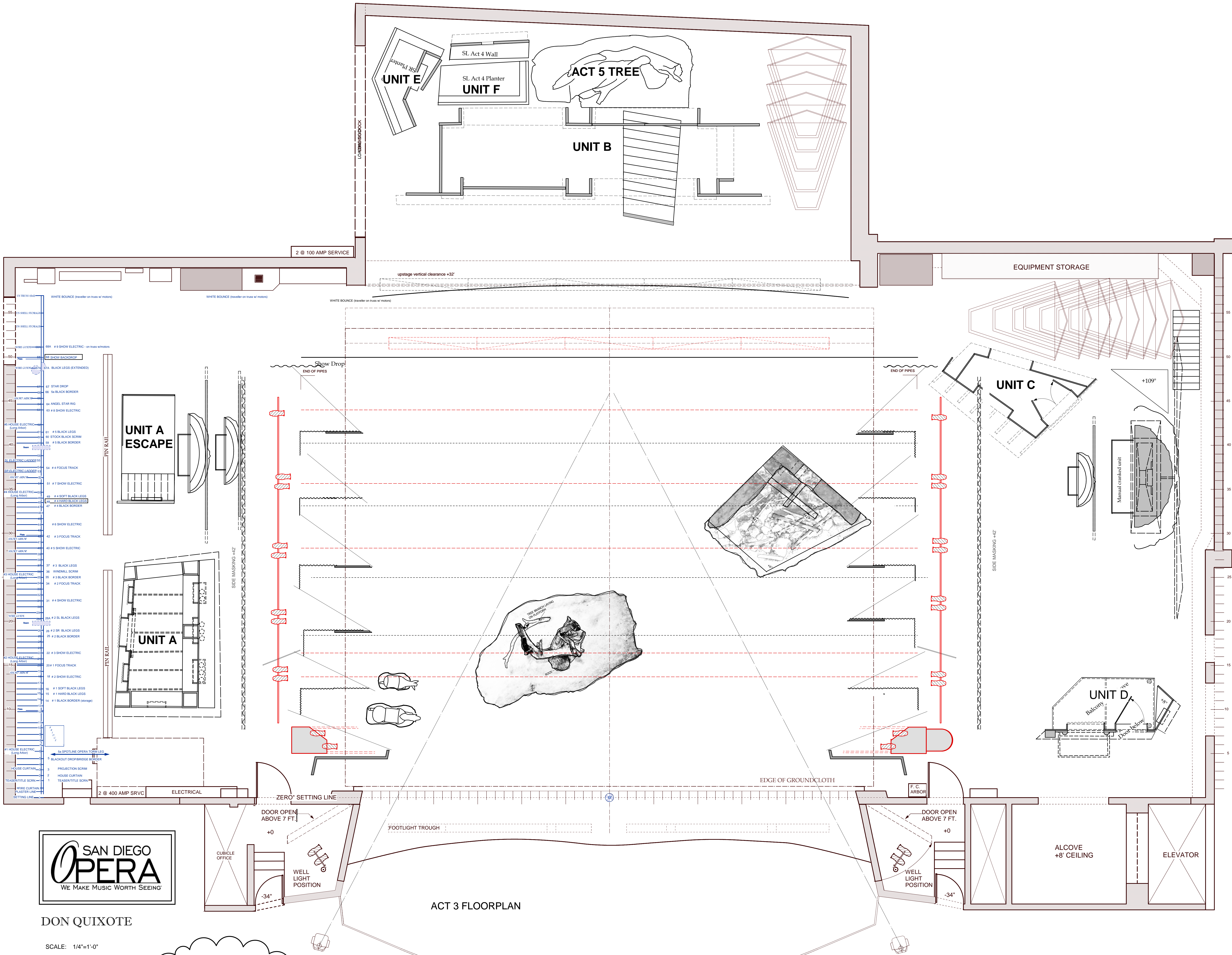


DON QUIXOTE

SCALE: 1/4"=1'-0"

REVISED:  
**FINAL 2009**

ACT 4 FLOORPLAN



- 12 1/2" BELL COVER
- 13 1/2" BELL COVER
- 14 1/2" BELL COVER
- 15 1/2" BELL COVER
- 16 1/2" BELL COVER
- 17 1/2" BELL COVER
- 18 1/2" BELL COVER
- 19 1/2" BELL COVER
- 20 1/2" BELL COVER
- 21 1/2" BELL COVER
- 22 1/2" BELL COVER
- 23 1/2" BELL COVER
- 24 1/2" BELL COVER
- 25 1/2" BELL COVER
- 26 1/2" BELL COVER
- 27 1/2" BELL COVER
- 28 1/2" BELL COVER
- 29 1/2" BELL COVER
- 30 1/2" BELL COVER
- 31 1/2" BELL COVER
- 32 1/2" BELL COVER
- 33 1/2" BELL COVER
- 34 1/2" BELL COVER
- 35 1/2" BELL COVER
- 36 1/2" BELL COVER
- 37 1/2" BELL COVER
- 38 1/2" BELL COVER
- 39 1/2" BELL COVER
- 40 1/2" BELL COVER
- 41 1/2" BELL COVER
- 42 1/2" BELL COVER
- 43 1/2" BELL COVER
- 44 1/2" BELL COVER
- 45 1/2" BELL COVER
- 46 1/2" BELL COVER
- 47 1/2" BELL COVER
- 48 1/2" BELL COVER
- 49 1/2" BELL COVER
- 50 1/2" BELL COVER
- 51 1/2" BELL COVER
- 52 1/2" BELL COVER
- 53 1/2" BELL COVER
- 54 1/2" BELL COVER
- 55 1/2" BELL COVER



DON QUIXOTE

SCALE: 1/4"=1'-0"

REVISED:  
**FINAL 2009**

**SAN DIEGO OPERA**  
WE MAKE MUSIC WORTH SEEING

---

**DON QUIXOTE**

---

**ACT 3 FLOORPLAN**

---

DATE: 05/06/2008

SCALE: 1/4"=1'-0"      PAGE: 3 of 11

REVISED: **FINAL 2009**

---

DIRECTED BY: IAN D. CAMPBELL  
 SCENERY BY: RALPH FUNICELLO  
 LIGHTING BY: MARIE B. BARRETT  
 PRODUCTION BY: CAMPBELL/FUNICELLO  
 SCENERY FROM: SAN DIEGO OPERA

---

DIRECTOR OF PRODUCTION: RON ALLEN  
 PRODUCTION MANAGER: JOAN FOSTER  
 PRODUCTION STAGE MANAGER: MARY Y. PETERS  
 PRODUCTION CARPENTER: JOHN DAVID PETERS  
 ASSISTANT LIGHTING DESIGNER: MICHAEL PAOLINI

---

**SAN DIEGO OPERA**  
 1200 3rd Ave, 18th Floor  
 SAN DIEGO, CA 92101

MAIN OFFICE: 619-232-7636  
 FAX: 619-231-6915  
 SCENG STUDIO: 619-232-6911  
 SCENG STUDIO FAX: 619-232-1925

---

**CIVIC THEATRE**  
 3rd & C Street  
 SAN DIEGO, CA 92101

PRODUCTION OFFICE: 619-237-8254  
 STAGE PHONE: 619-232-4751  
 PRODUCTION FAX: 619-237-0466

DON QUIXOTE ACT 3 FLOORPLAN

DATE: 05/06/2008

SCALE: 1/4"=1'-0"

REVISED: **FINAL 2009**

1A 11 of

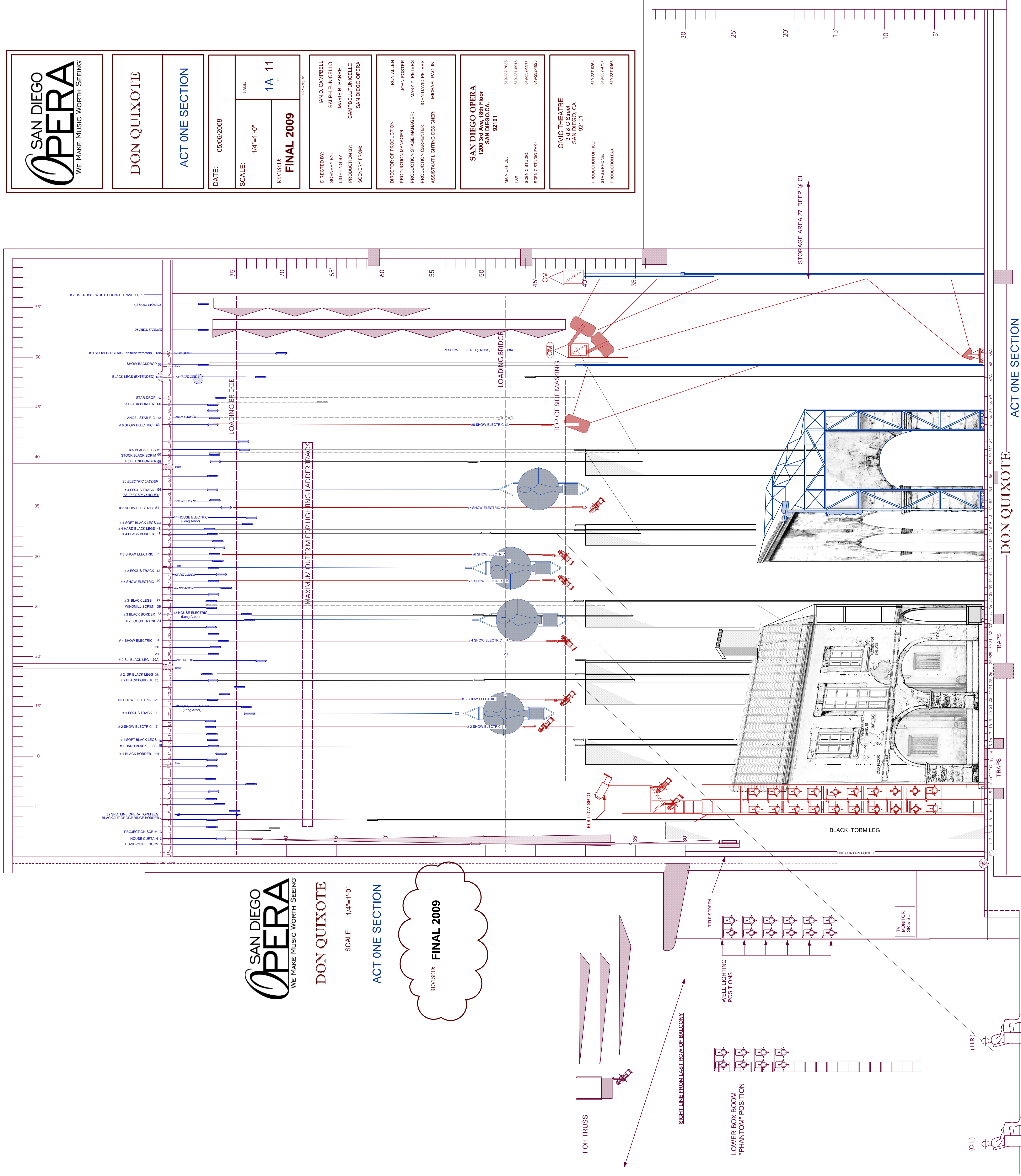
DIRECTED BY: IAN D. CAMPBELL  
SCENERY BY: RALPH FUNICELLO  
LIGHTING BY: MARIE B. BARRETT  
PRODUCTION BY: CAMPBELL/FUNICELLO  
SCENERY FROM: SAN DIEGO OPERA

DIRECTOR OF PRODUCTION: RON ALLEN  
PRODUCTION MANAGER: JOAN FOSTER  
PRODUCTION STAGE MANAGER: MARY Y. PETERS  
PRODUCTION CARPENTER: JOHN DAVID PETERS  
ASSISTANT LIGHTING DESIGNER: MICHAEL PAOLINI

**SAN DIEGO OPERA**  
1200 3rd Ave, 18th Floor  
SAN DIEGO, CA 92101

MAIN OFFICE: 619-237-7636  
FAX: 619-231-8915  
SCENIC STUDIO: 619-232-8911  
SCENIC STUDIO FAX: 619-232-1825

**CIVIC THEATRE**  
3rd & C Street  
SAN DIEGO, CA 92101  
PRODUCTION OFFICE: 619-237-9254  
STAGE PHONE: 619-232-4751  
PRODUCTION FAX: 619-237-9468



SCALE: 1/4"=1'-0"

REVISED: **FINAL 2009**

DATE: 05/06/2008

SCALE: 1/4"=1'-0"

REVISED: **FINAL 2009**

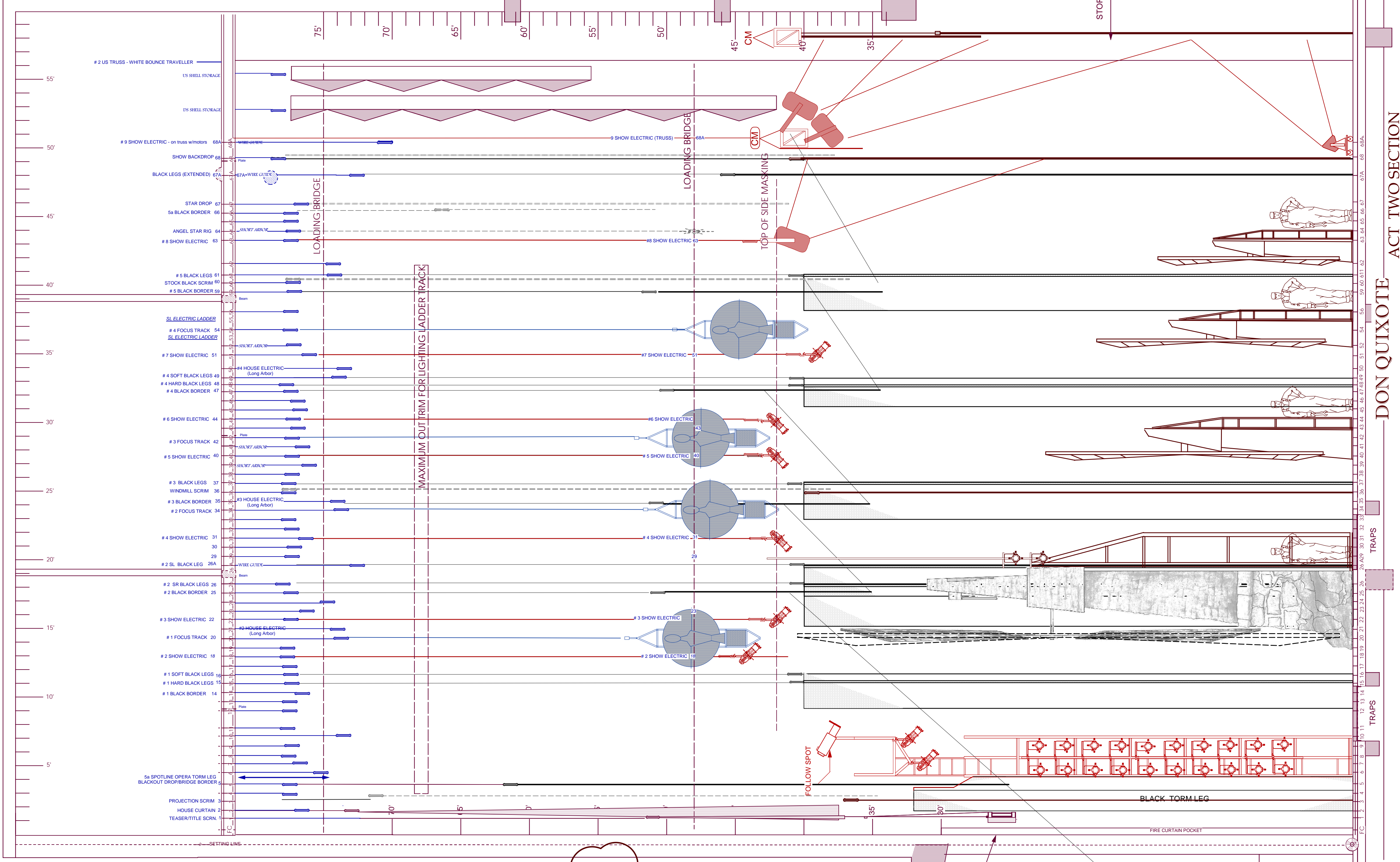
DIRECTED BY: IAN D. CAMPRELL  
SCENERY BY: RALPH FUNICELLO  
LIGHTING BY: MARIE B. BARRETT  
PRODUCTION BY: CAMPRELL/FUNICELLO  
SCENERY FROM: SAN DIEGO OPERA

DIRECTOR OF PRODUCTION: RON ALLEN  
PRODUCTION MANAGER: JOAN FOSTER  
PRODUCTION STAGE MANAGER: MARY Y. PETERS  
PRODUCTION CARPENTER: JOHN DAVID PETERS  
ASSISTANT LIGHTING DESIGNER: MICHAEL PAOLINI

**SAN DIEGO OPERA**  
1200 3rd Ave, 18th Floor  
SAN DIEGO, CA 92101

MAIN OFFICE: 619-232-7698  
FAX: 619-231-4815  
SCENIC STUDIO: 619-232-8911  
SCENIC STUDIO FAX: 619-232-1825

**CIVIC THEATRE**  
3rd & C Street  
SAN DIEGO, CA 92101  
PRODUCTION OFFICE: 619-237-9254  
STAGE PHONE: 619-232-4751  
PRODUCTION FAX: 619-237-9468



**DON QUIXOTE ACT TWO SECTION**

SCALE: 1/4"=1'-0"

**ACT TWO SECTION**

REVISED: **FINAL 2009**

FOH TRUSS

SIGHT LINE FROM LAST ROW OF BALCONY

LOWER BOX BOOM  
"PHANTOM" POSITION

WELL LIGHTING  
POSITIONS

TITLE SCREEN

TV  
MONITOR  
SR & SL

(C.L.)

(H.R.)

REVISED: **FINAL 2009**

SCALE: 1/4"=1'-0"





DATE: 05/06/2008

SCALE: 1/4"=1'-0"

REVISED: **FINAL 2009**

REVISED BY: IAN D. CAMPRELL  
 RALPH FUNICELLO  
 MARIE B. BARRETT  
 CAMPRELL/FUNICELLO  
 SAN DIEGO OPERA

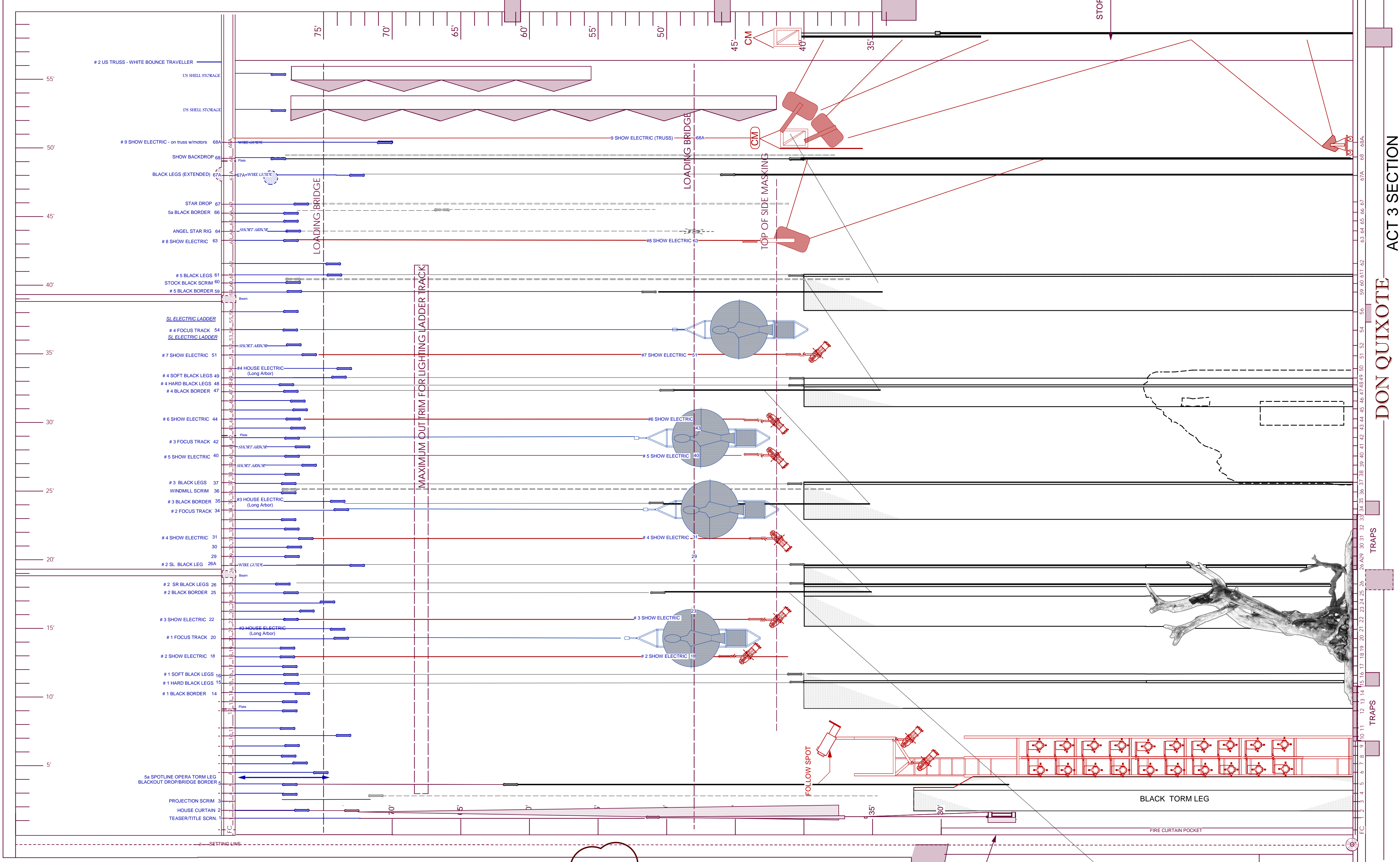
DIRECTOR OF PRODUCTION: RON ALLEN  
 PRODUCTION MANAGER: JOAN FOSTER  
 PRODUCTION STAGE MANAGER: MARY Y. PETERS  
 PRODUCTION CARPENTER: JOHN DAVID PETERS  
 ASSISTANT LIGHTING DESIGNER: MICHAEL PAOLINI

**SAN DIEGO OPERA**  
 1200 3rd Ave, 18th Floor  
 SAN DIEGO, CA 92101

MAIN OFFICE: 619-232-7638  
 FAX: 619-231-4815  
 SCENIC STUDIO: 619-232-8911  
 SCENIC STUDIO FAX: 619-232-1825

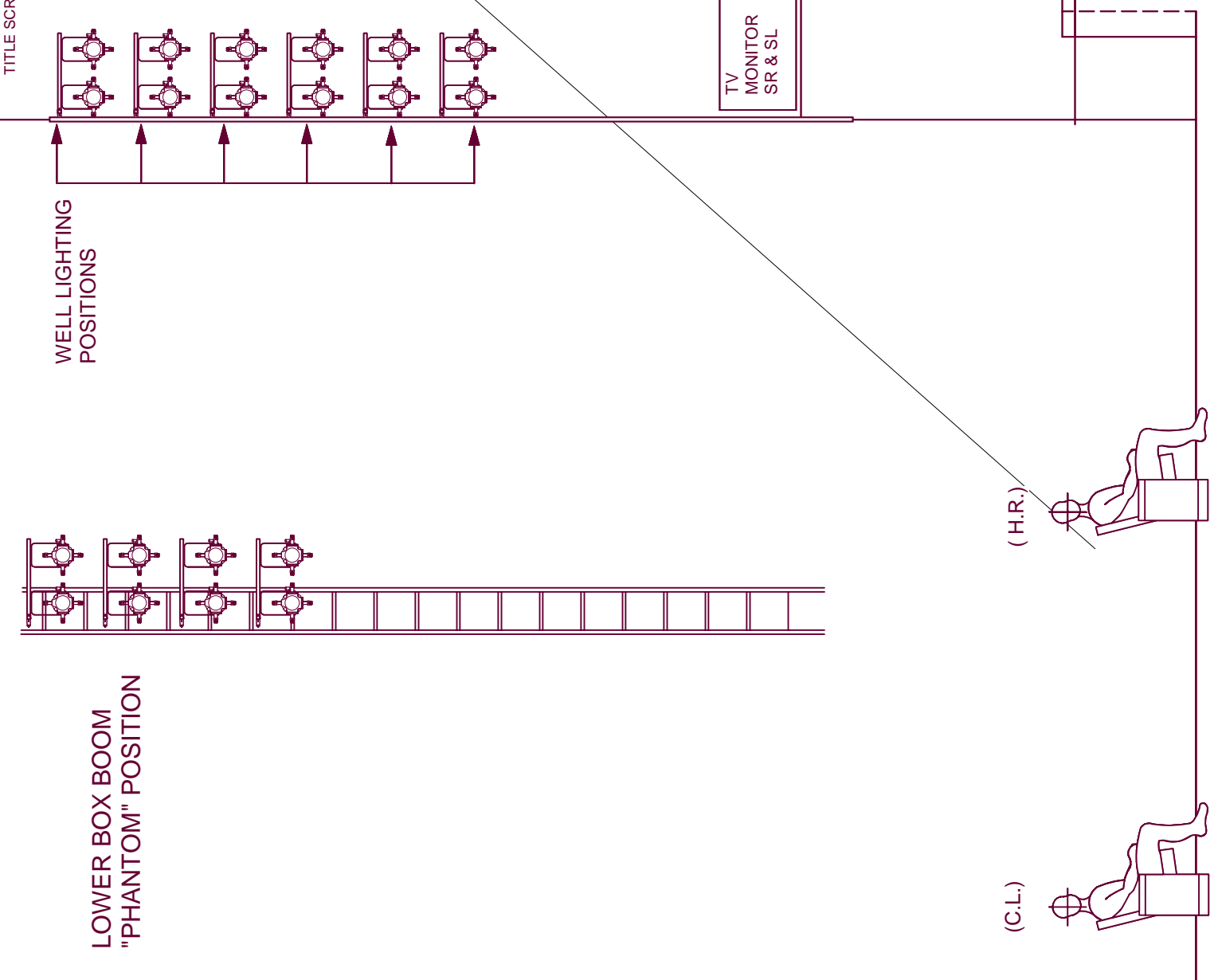
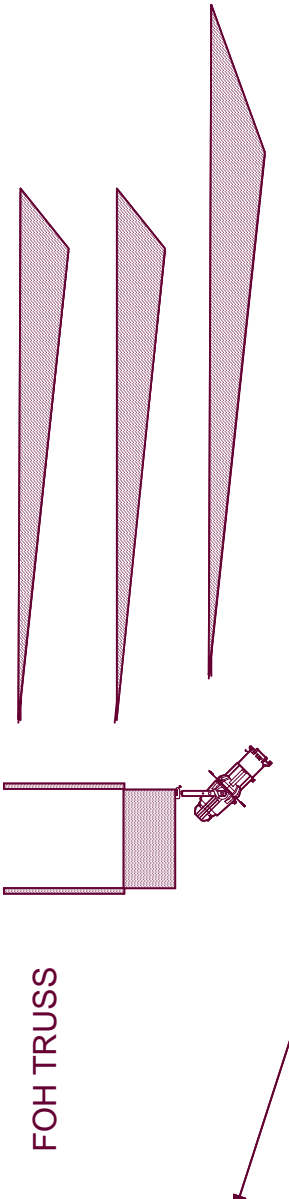
**CIVIC THEATRE**  
 3rd & C Street  
 SAN DIEGO, CA 92101

PRODUCTION OFFICE: 619-237-9254  
 STAGE PHONE: 619-232-4751  
 PRODUCTION FAX: 619-237-9468



SCALE: 1/4"=1'-0"

REVISED: **FINAL 2009**



**ACT 3 SECTION**

**DON QUIXOTE**

**ACT 3 SECTION**

REVISED: **FINAL 2009**

SCALE: 1/4"=1'-0"