

SAN DIEGO OPERA
 WE MAKE MUSIC WORTH SEEING

Cavalleria & Pagliacci

Cavalleria Floorplan

DATE: **FINAL 2008**

SCALE: 1/4"=1'-0" PAGE: 3 of 4

REVISED: 03/31/2008

DIRECTED BY: LOFFY MANSOUR
 SCENERY BY: JOHN COYNE
 LIGHTING BY: MICHAEL J. WHITFIELD
 PRODUCTION BY: MANSOUR/COYNE
 SCENERY FROM: SAN DIEGO OPERA

DIRECTOR OF PRODUCTION: RON ALLEN
 PRODUCTION MANAGER: JOAN FOSTER
 PRODUCTION STAGE MANAGER: MARY V. PETERS
 PRODUCTION CARPENTER: JOHN DAVID REESE
 ASSISTANT LIGHTING DESIGNER: CHRIS RYAN

SAN DIEGO OPERA
 1200 3rd Ave, 18th Floor
 SAN DIEGO, CA 92101

MAIN OFFICE: 619-232-7000
 FAX: 619-232-8955
 SCENIC STUDIO: 619-232-0911
 SCENIC STUDIO FAX: 619-232-1805

CIVIC THEATRE
 314 S. STATE
 SAN DIEGO, CA 92101

PRODUCTION OFFICE: 619-232-8554
 STAGE PHONE: 619-232-4751
 PRODUCTION FAX: 619-232-0988



Cavalleria & Pagliacci

CAVALLERIA SECTION

DATE: **FINAL - 2008**

SCALE: **1/4"=1'-0"**

REVISED: **03/31/2008**

TABLE BY: **2 of 4**

DIRECTED BY: **LOTTI MANSOUR**

SCENARY BY: **JANA COVINE**

PRODUCTION BY: **MICHAEL WHITEFIELD**

SCENARY FROM: **MARION MARIONNE
SAN DIEGO OPERA**

DIRECTION OF PRODUCTION: **RENALDO**

PRODUCTION MANAGER: **JOHN COSTER**

PRODUCTION STAGE MANAGER: **MARTY PATTERO**

ASSISTANT LIGHTING DESIGNER: **CHRIS SHINE**

SAN DIEGO OPERA
1006 3rd Ave., 8th Floor
SAN DIEGO, CA 92101

MANAGER: **ERIC ZUMBO** 619.594.7200

FIN: **ERIC ZUMBO** 619.594.4811

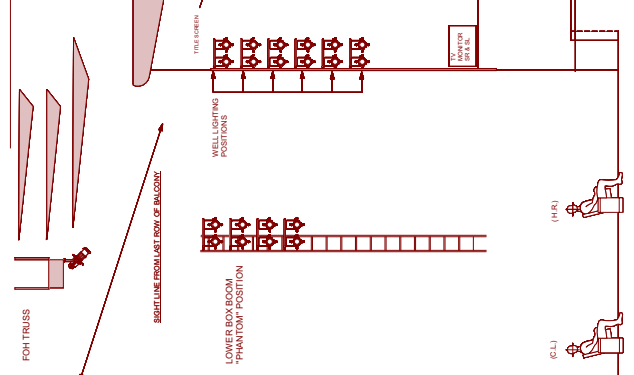
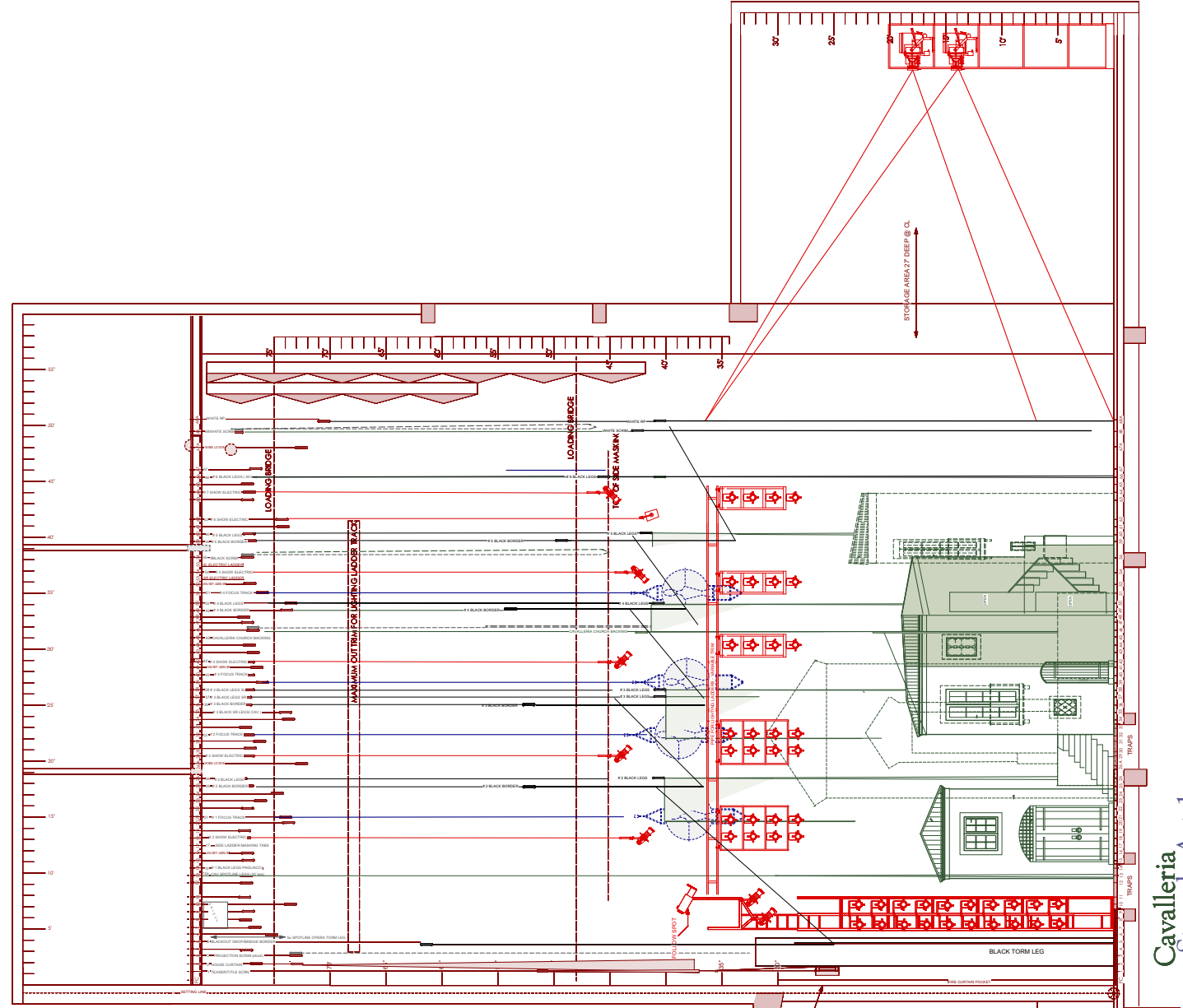
SECRETARY: **ERIC ZUMBO** 619.594.1000

OMNITHEATRE
SAN DIEGO, CA 92101

PRODUCTION OFFICE: **619.594.6000**

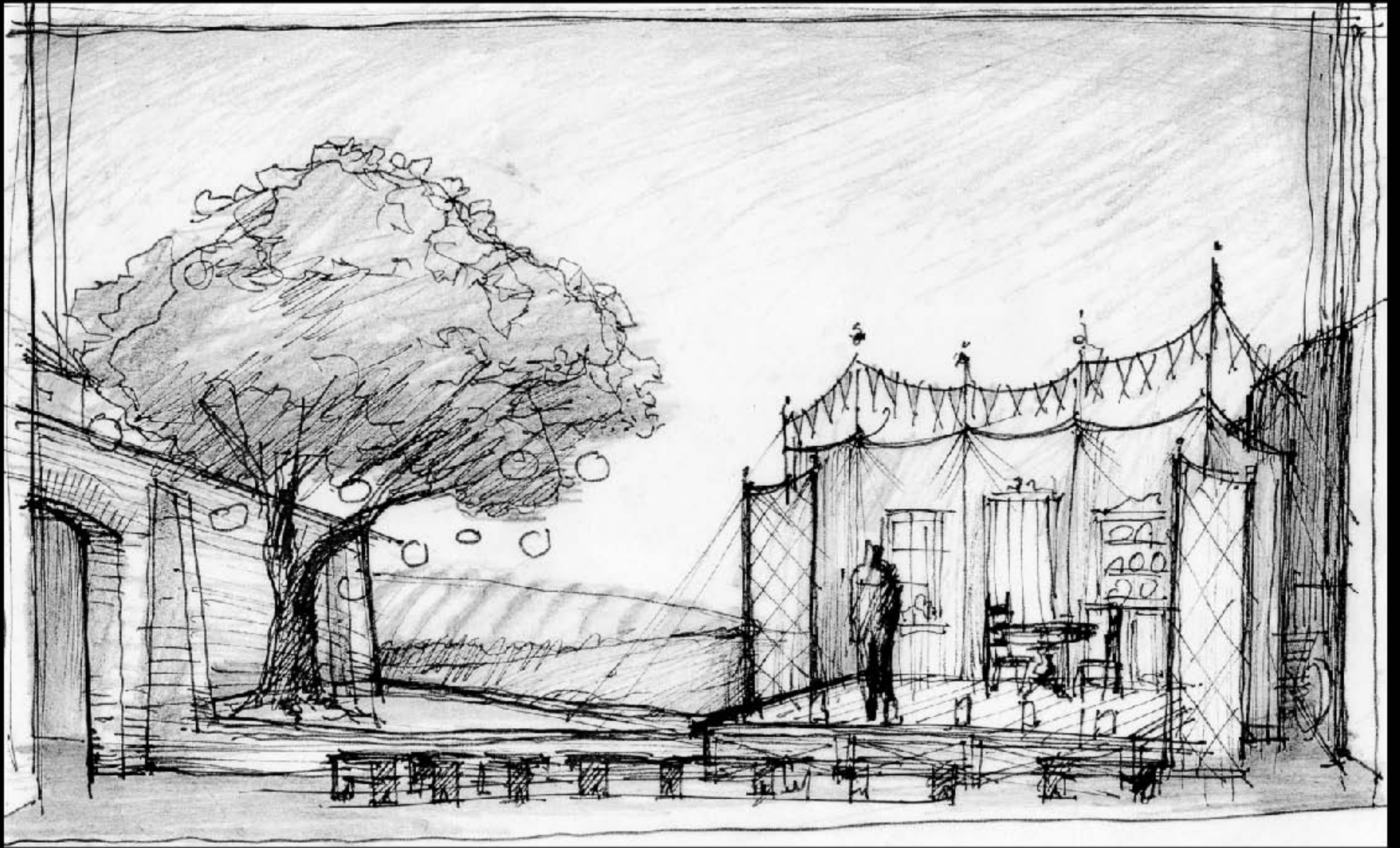
STAGE OFFICE: **619.594.4771**

PRODUCTION FAX: **619.594.6000**



Cavalleria
Stuarda Act 1

CAVALLERIA SECTION
ACT 1 SECTION



I want those fiery pleasures and hot kisses
which started the blaze in my heart!



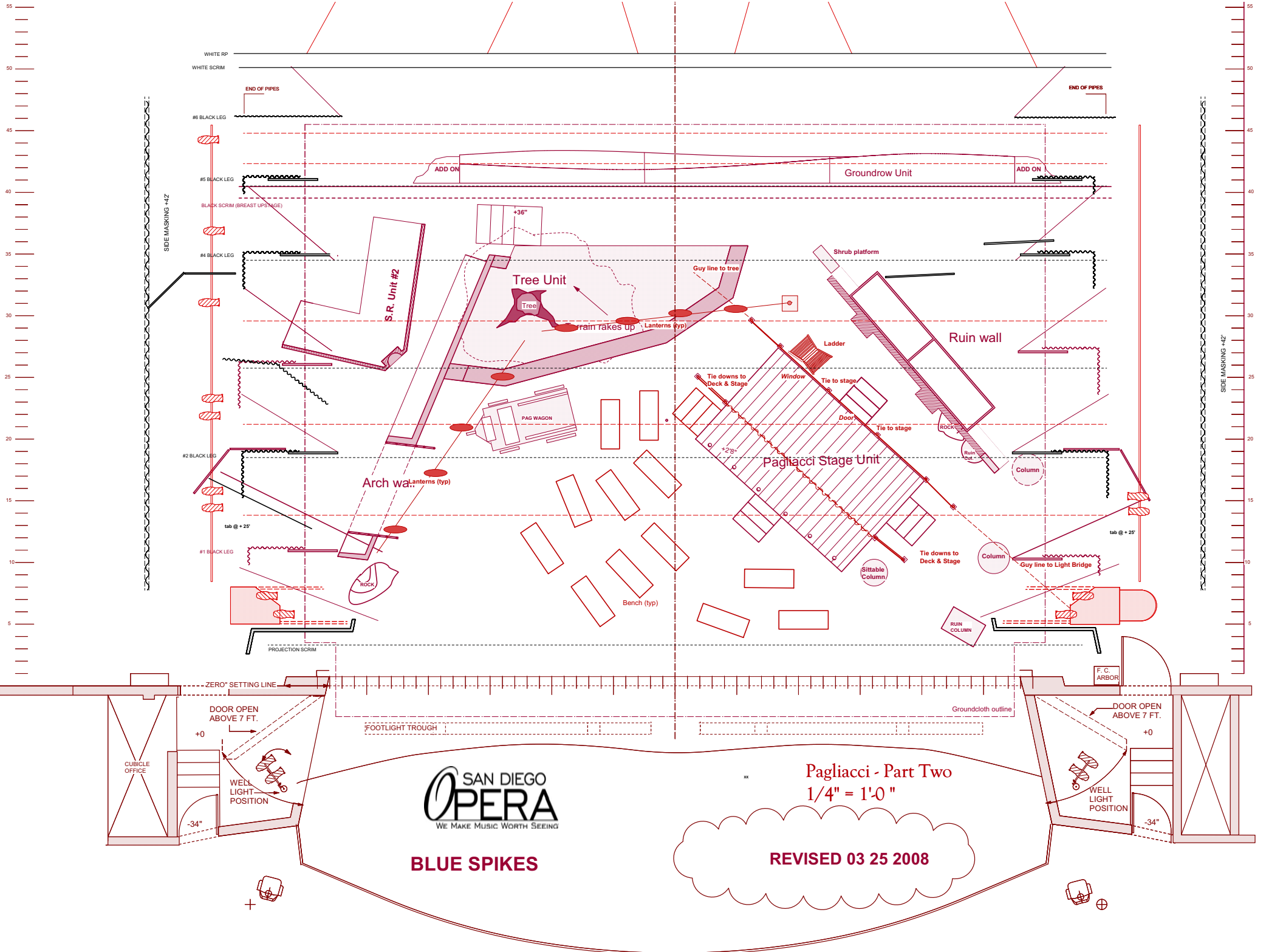












SAN DIEGO
OPERA
 WE MAKE MUSIC WORTH SEEING

BLUE SPIKES

Pagliacci - Part Two
 1/4" = 1'-0"

REVISED 03 25 2008

CUBICLE OFFICE

DOOR OPEN ABOVE 7 FT.

WELL LIGHT POSITION

-34"

F. C. ARBOR

DOOR OPEN ABOVE 7 FT.

WELL LIGHT POSITION

-34"

FOOTLIGHT TROUGH

Groundcloth outline

WHITE RP
 WHITE SCRIM

#6 BLACK LEG

#5 BLACK LEG

BLACK SCRIM (BREAST UPSTAGE)

#4 BLACK LEG

#2 BLACK LEG

#1 BLACK LEG

tab @ + 25'

PROJECTION SCRIM

ZERO° SETTING LINE

+0

+0

+0

+0

+0

+0

+0

+0

+0

+0

+0

+0

+0

+0

+0

+0

+0

+0

+0

+0

+0

+0

+0

+0

+0

+0

+0

+0

+0

+0

+0

+0

+0

+0

+0

+0

+0

+0

+0

+0

+0

+0

+0

+0

+0

+0

+0

+0

+0

+0

+0

+0

+0

+0

+0

+0

+0

+0

+0

+0

+0

+0

+0

+0

+0

+0

+0

+0

+0

+0

+0

+0

+0

+0

+0

+0

+0

+0

+0

+0

+0

+0

+0

+0

+0

+0

+0

+0

+0

+0

+0

+0

+0

+0

+0

+0

+0

+0

+0

+0

+0

+0

+0

+0

+0

+0

+0

+0

+0

+0

+0

+0

+0

+0

+0

+0

+0

+0

+0

+0

+0

+0

+0

+0

+0

+0

+0

+0

+0

+0

+0

+0

+0

+0

+0

+0

+0

+0

+0

+0

+0

+0

+0

+0

+0

+0

+0

+0

+0

+0

+0

+0

+0

+0

+0

+0

+0

+0

+0

+0

+0

+0

+0

+0

+0

+0

+0

+0

+0

+0

+0

+0

+0

+0

+0

+0

+0

+0

+0

+0

+0

+0

+0

+0

+0

+0

+0

+0

+0

+0

+0

+0

+0

+0

+0

+0

+0

+0

+0

+0

+0

+0

+0

+0

+0

+0

+0

+0

+0

+0

+0

+0

+0

+0

+0

+0

+0

+0

+0

+0

+0

+0

+0

+0

+0

+0

+0

+0

+0

+0

+0

+0

+0

+0

+0

+0

+0

+0

+0

+0

+0

+0

+0

+0

+0

+0

+0

+0

+0

+0

+0

+0

+0

+0

+0

+0

+0

+0

+0

+0

+0

+0

+0

+0

+0

+0

+0

+0

+0

+0

+0

+0

+0

+0

+0

+0

+0

+0

+0

+0



Cavalleria & Pagliacci
Pagliacci Section

DATE: **FINAL - 2008**
SCALE: **1/4"=1'-0"**
REVISED: **03/31/2008**

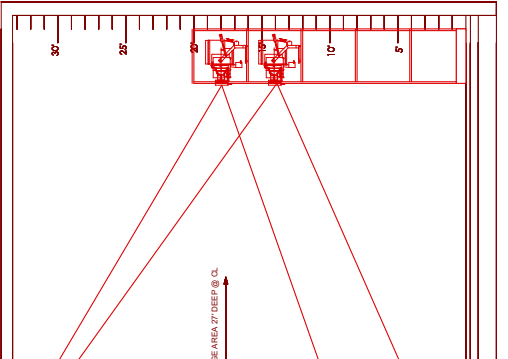
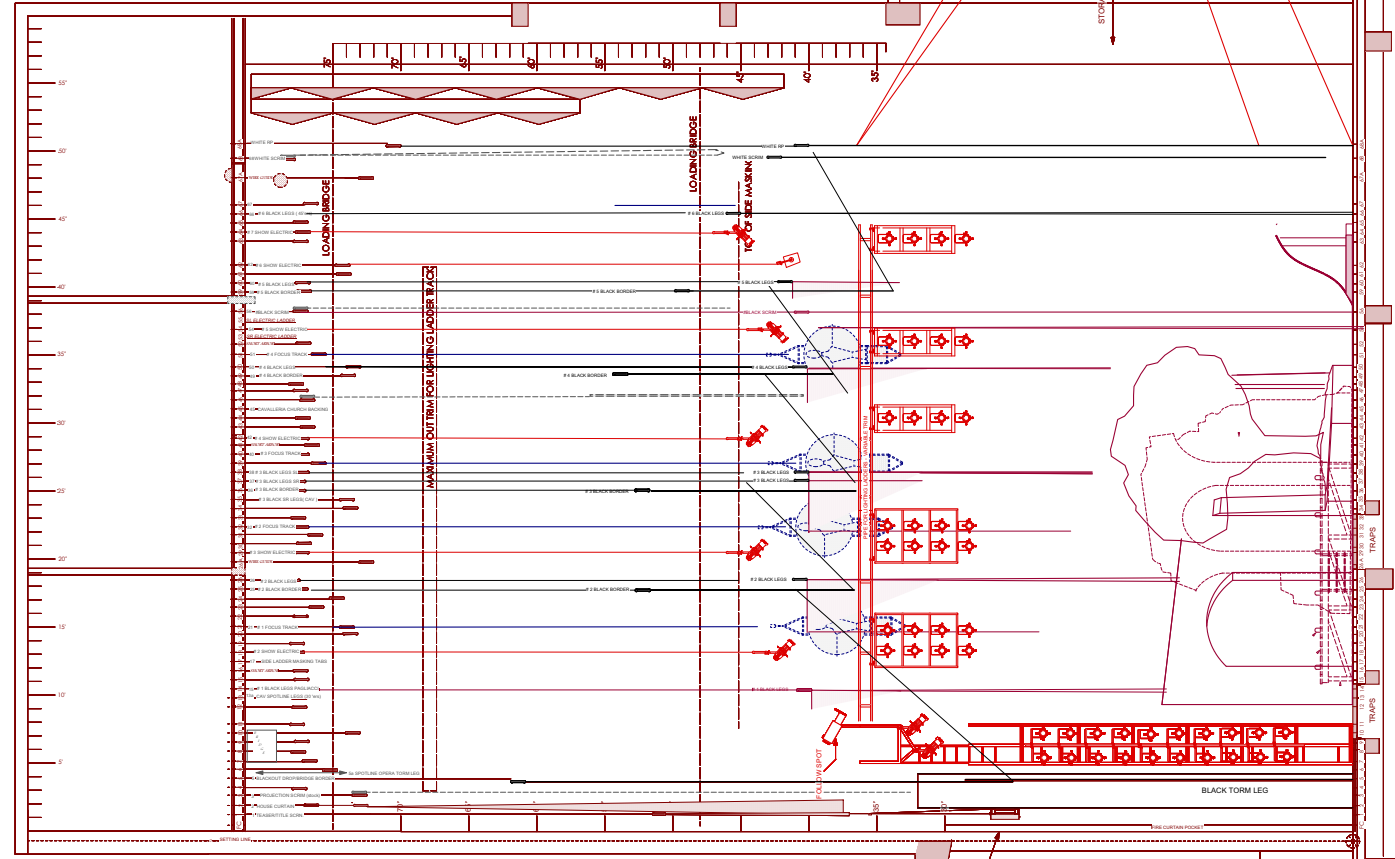
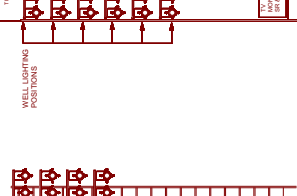
DESIGNED BY: **LOTTI MANSOUR**
DRAWN BY: **JANA COVINE**
CHECKED BY: **MICHAEL WHITFIELD**
PROJECT NO.: **MANHATTAN OPERA**

PRODUCTION: **SENALYN**
DIRECTOR OF PRODUCTION: **JOHN COVINE**
PRODUCTION MANAGER: **JANET FORBES**
PRODUCTION STAGE MANAGER: **MARTY PETERS**
PRODUCTION OPERATIONS MANAGER: **JOHN DAVID PETERS**
ASSISTANT LIGHTING DESIGNER: **CHRIS SHINE**

SAN DIEGO OPERA
1245 3rd Ave., 18th Floor
SAN DIEGO, CA 92101

OMNI THEATRE
SAN DIEGO, CA 92101

PRODUCTION OFFICE: **FRANCO**
STAGE MANAGER: **FRANCO**
PRODUCTION MANAGER: **FRANCO**



Pagliacci
Stuarda Act 1

ACT 1 SECTION

Pagliacci Section

