



# DON QUIXOTE

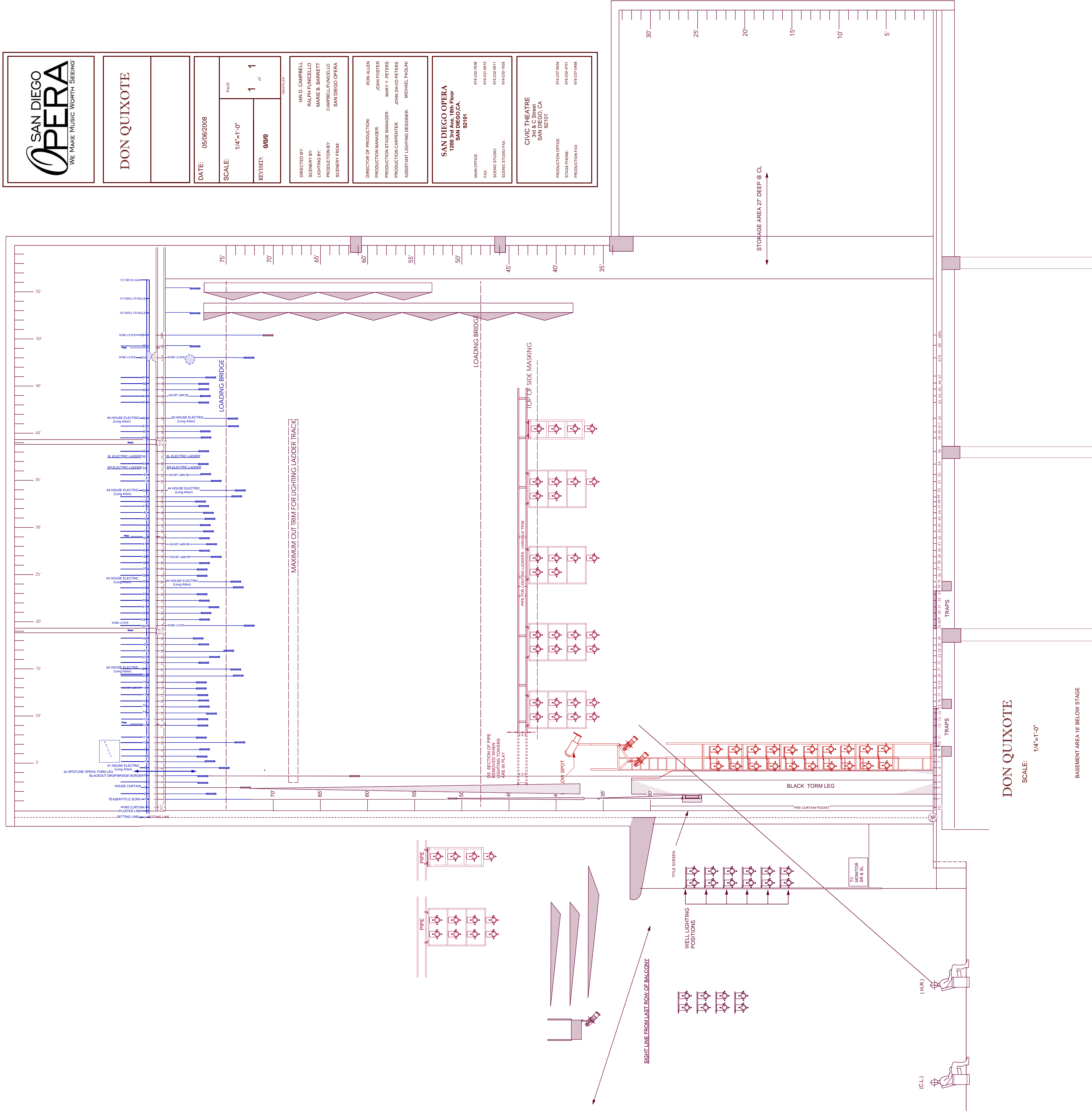
DATE: 05/06/2008  
SCALE: 1/4"=1'-0"  
REVISED: 0000

DIRECTED BY: IAN D. CAMPBELL  
SCENERY BY: RALPH FUNKELLO  
LIGHTING BY: MARIE B. BARRETT  
PRODUCTION BY: CAMPBELL/FUNKELLO  
SCENERY FROM: SAN DIEGO OPERA

DIRECTOR OF PRODUCTION: ION ALLEN  
PRODUCTION MANAGER: JOAN FOSTER  
PRODUCTION STAGE MANAGER: MARY Y. PETERS  
PRODUCTION CARPENTER: JOHN DAVID PETERS  
ASSISTANT LIGHTING DESIGNER: MICHAEL MADINI

**SAN DIEGO OPERA**  
1200 5th AVE., 18th FLOOR  
SAN DIEGO, CA 92101  
MAIN OFFICE: 619.232.2266  
FAX: 619.232.2267  
BOX OFFICE: 619.232.2611  
BOXING STUDIO FAX: 619.232.2602

**CIVIC THEATRE**  
SAN DIEGO, CA 92101  
PRODUCTION OFFICE: 619.232.4674  
STAGE PHONE: 619.232.4771  
PRODUCTION FAX: 619.232.4348



## DON QUIXOTE

SCALE: 1/4"=1'-0"

BASEMENT AREA IS BELOW STAGE

