

WHY GPO MIGRATOR?

Transfer Group Policy settings with a few clicks of the mouse!

SDM Software's GPO Migrator simplifies the process of cleaning up, consolidating and reorganizing your Group Policy environment. Finally, you have the ability to pick settings out of GPOs and move them to other GPOs as needed, with just a few clicks of the mouse. In addition, if you are beginning the transition to PowerShell Desired State Configuration (DSC), GPO Migrator supports migration of GPO settings to DSC documents, to ease the transition to DSC.

GPO Migrator does the hard work for you. All you have to do is select the source and destination GPOs, specify the supported policy areas or settings you want to migrate, and click. Your new or existing GPO, or DSC document, now has the settings of your source GPO.

BENEFITS

- Allows quick and easy movement of GPO settings from one GPO to another
- Simplifies Group Policy consolidation and cleanup projects
- Supports the most popular GPO areas (e.g. Administrative Templates, Security Settings, Drive and Printer Mappings and more)
- Displays setting values of source GPO for quick checking
- Provides full logging of all migration activities

FEATURES

- GPO to GPO migration
- GPO to Desired State Configuration document migration
- Overwrite settings of existing GPO
- Leave settings of existing GPO in place
- Create a backup of existing GPO before migration
- Migrate all settings or just those you select
- Supports all OS versions from Windows 7 to Server 2016

PRODUCT REQUIREMENTS

Operating Systems Supported for Installation:

Microsoft® Windows® 7 ,8.1, 10
Windows Server 2008-R2,2012-R2,
2016

Memory:

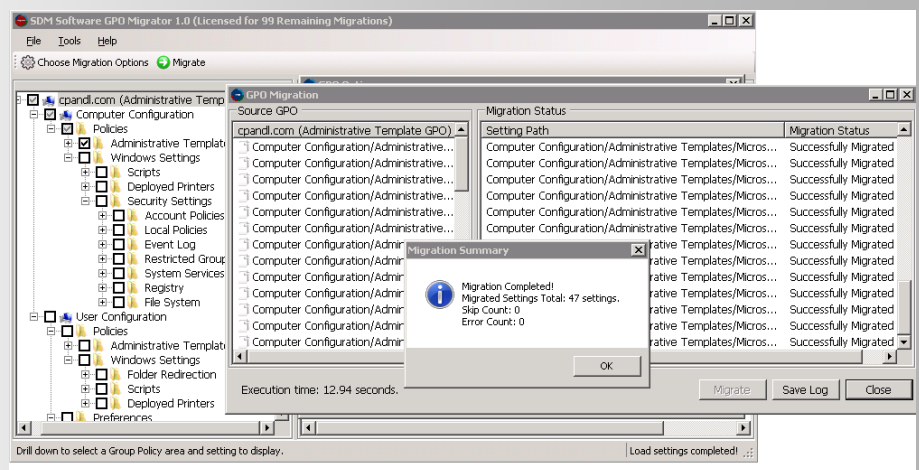
Minimum 100MB free RAM

Hard Disk:

Minimum 50MB free disk space

Additional Requirements:

Microsoft .NET Framework 4.5.2
Microsoft GPMC



To evaluate GPO Migrator, contact us at
sales@sdmsoftware.com