

GUY FENTER EDUCATION SERVICE COOPERATIVE

**Annual Report of Activities
2019-2020**



**Roy Hester, Director
3010 E. Hwy 22, Suite A
Branch, AR 72928
479.965.2191**

GUY FENTER EDUCATION SERVICE COOPERATIVE

Table of Contents

A Message from the Director	4
Mission Statement	5
State Map	6
Organizational Chart	7
Board of Directors	8
Teacher Center Committee Members 2018-2019	9
Education Service Cooperative (ESC) Annual Report	10
Staffing	12
Teacher Center	14
Administrative Services	15
Direct Services to Students	16
Anecdotal Reports	17
GFESC and University of the Ozarks Partnership	17
GFESC Dyslexia Contacts Meetings	17
GFESC Federal Programs and Curriculum Coordinators' Meetings	17
GFESC Principals' Professional Learning Community & Monthly Meetings	18
GFESC hosts Winsor Learning and Wilson Language	18
GFESC collaborates with Marzano Research – High Reliability Schools	19
GFESC Annual Leadership Conference	19
DESE and AAEA	19
Host National Speakers, Consultants, and Education Leaders	19
Partners with Walton Arts Center for The Unexpected Project	20
Partnerships with area Business Organizations and Colleges	20
GFESC and Local School District Partnership	20
Employment Policies and Practices	22
Employed	22
Terminated	22
Seeking Employment	23
Program: Accounting	24
Program: ADE/APSCN Student Management Systems Field Analyst	26
Program: Arkansas Transition Services	27
Program: K-12 Behavior Support Specialist	33
Program: Career & Technical Education	35
Program: Consolidated Purchasing Services	38
Program: Digital Learning – Team Digital, Arkansas Connect2Digital	39
Program: Early Childhood	41
Program: ESVI and CAYSI	43
Program: Foster Grandparent Program	45
Program: Gifted and Talented	46
Program: Literacy	48
Program: Mathematics	50
Program: Migrant Education	52
Program: Novice Teacher Mentoring	55
Program: School Health Services	57
Program: Science	61
Program: Teacher Center (Professional Development; Curriculum Development Assistance; Resources	63

GUY FENTER EDUCATION SERVICE COOPERATIVE

Program: Technology	65
Special Projects and Programs	66
TESS	66
Leadership Excellence and Development System (LEADS)	66
Math	66
Literacy	67
Science	67
Other Content Areas	67
Leadership Quest	67
School Board Training	68
Electronic Fingerprinting	68
ACT Aspire; WIST; PAST	68
Professional Development Activities Summary	70

GUY FENTER EDUCATION SERVICE COOPERATIVE

Message from the Director

The Guy Fenter Education Service Cooperative has served the schools of western Arkansas for 37 years. The Co-op is constantly changing to meet the needs of our schools and assist with the education of the students of western Arkansas. I am both pleased and excited to be involved in this outstanding program as we assist local school districts with the education of their students and staff as well as assisting districts in the maximization of their limited funds through Co-op activities.

This report of activities was prepared by the Co-op staff for the purpose of informing our member schools, the ADE and others, about the services that are provided by the Co-op and to satisfy the requirements of Act 349 of 1985. I feel very confident that it satisfies those objectives.

Roy Hester
Director, GFESC

GUY FENTER EDUCATION SERVICE COOPERATIVE

Mission Statement

The mission of the Guy Fenter Education Service Cooperative is to assist the member schools in more effective and more equitable use of their shared resources and to provide shared services for the better education of their children and youth.

General Goals

Service desires of the local school districts shall be the paramount influence on the design of the cooperative's services programs. Such programs will also be influenced by the State Department of Education's desire to make services available to local districts through the cooperative.

The cooperative shall endeavor to provide requested services more economically and/or more effectively than the same services could be provided on an individual district basis.

The cooperative shall strive to make services to all interested districts as equally accessible as possible.

Communications and Coordination

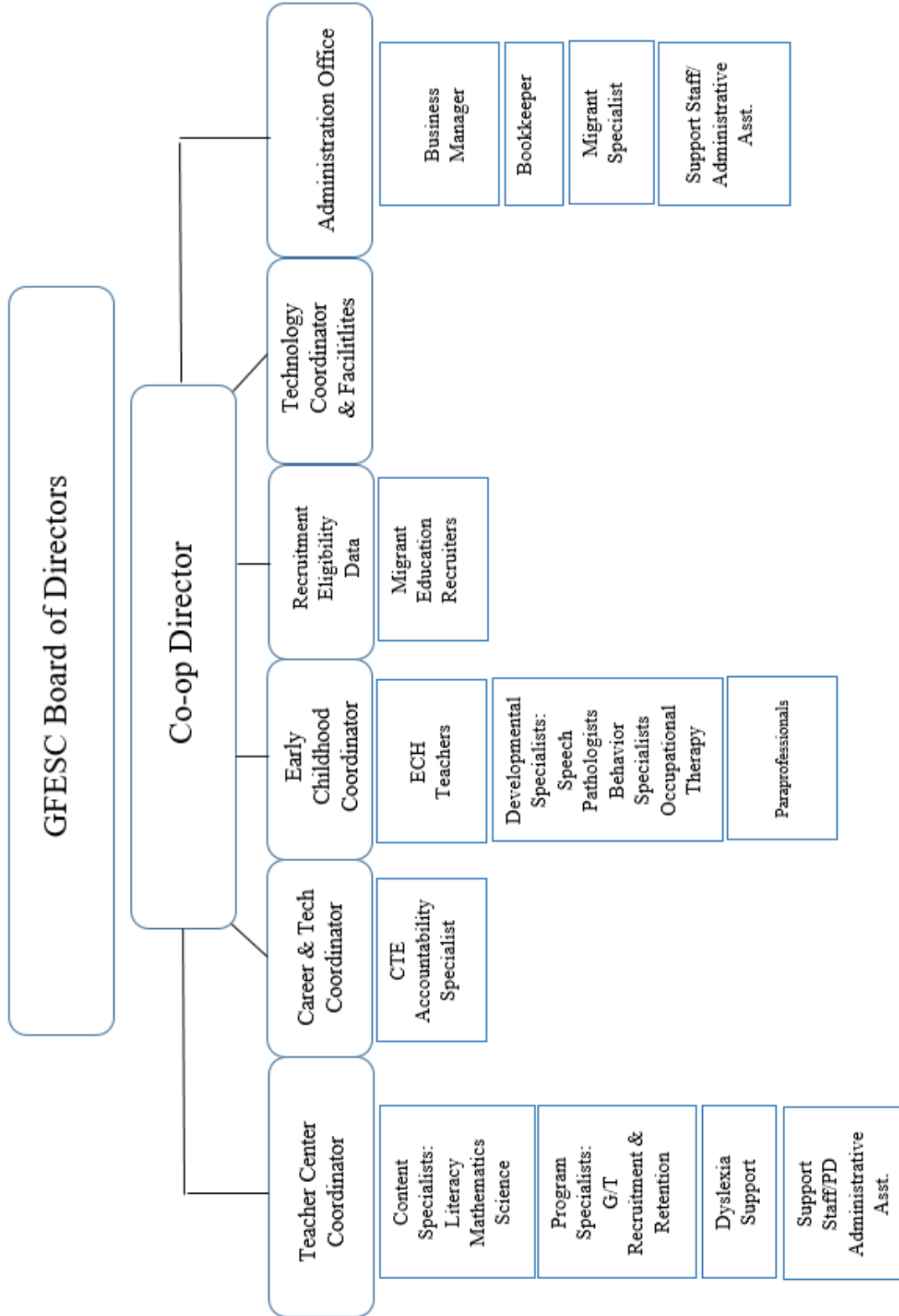
The cooperative shall work with its local school districts, with other cooperatives and the State Department of Education to improve communication and coordination through the Arkansas network of local school districts.

This cooperative shall constantly strive to reflect the wishes of the local districts' representatives in its operation, consistent with the applicable provisions of statutes and state regulations.

ARKANSAS SCHOOL DISTRICTS AND EDUCATION SERVICE COOPERATIVES

Crawford
Franklin
Johnson
Logan
Scott
Sebastian

GFESC Organizational Chart



GUY FENTER EDUCATION SERVICE COOPERATIVE

School Districts served in the Guy Fenter Education Service Cooperative

Alma, Booneville, Cedarville, Charleston, Clarksville, County Line, Fort Smith, Future School of FS, Greenwood, Hackett, Lamar, Lavaca, Magazine, Mansfield, Mountainburg, Mulberry/PV, Ozark, Paris, Scranton, Van Buren, Waldron, Westside.

Board of Directors

Name	Position	School District
Dr. Kerry Schneider	Executive Committee	Cedarville
Jim Ford	Executive Committee - Chair	Ozark
Taylor Gattis	Executive Committee	County Line
Dr. David Hopkins	Executive Committee - Vice Chair	Clarksville
David Woolly	Executive Committee	Alma
John Ciesla	Executive Committee	Greenwood
Steve Rose	Executive Committee	Lavaca
Daniel Fielding	Board Member	Waldron
Trent Goff	Board Member	Booneville
Jeff Stubblefield	Board Member	Charleston
Dr. Doug Brubaker	Board Member	Fort Smith
Eddie Ray	Board Member	Hackett
Jay Holland	Board Member	Lamar
Brett Bunch	Board Member	Magazine
Robert Ross	Board Member	Mansfield
Dr. Debbie Atwell	Board Member	Mountainburg
Dr. Lonnie Myers	Board Member	Mulberry/Pleasant View
Wayne Fawcett	Board Member	Paris
Toby Cook	Board Member	Scranton
Dr. Harold Jeffcoat	Board Member	Van Buren
Brad Kent	Board Member	Westside

GUY FENTER EDUCATION SERVICE COOPERATIVE

Teacher Center Committee

Committee Member	District	Position	Term Expires
Jerry Valentine	Alma	Administration, High School	Aug- 20
Katelin Carson	Booneville	Elementary School Teacher	Aug- 21
Cathy Reese	Cedarville	Elementary School Teacher	Aug- 20
Melissa Moore	Charleston	Administration, Elementary	Aug- 20
Bo Dean	Clarksville	Administration, Asst. Supt.	Aug- 19
Brittany Brunson	County Line	Elementary School Teacher	Aug- 21
April Oden	Future School Fort Smith	DTC/Internship Coordinator	Aug-20
Mary Ann Johns	Fort Smith	Administration, Elementary	Aug- 20
John Ciesla	Greenwood	Administration, Supt.	Aug- 19
Cindy Linker	Hackett	High School Teacher	Aug- 21
Jay Holland	Lamar	Administration, Supt.	Aug- 19
Felicia Owen	Lavaca	Administration, High School	Aug- 21
Tina Lamirand	Magazine	Middle/Junior High Teacher	Aug- 21
Melissa Lybyer	Mansfield	Elementary School Teacher	Aug- 21
Diann Voeller	Mountainburg	Elementary School Teacher	Aug- 21
Brandy Crumrine	Mulberry/Pleasant View	Middle/Junior High Teacher	Aug- 19
Tracy Dawa	Ozark	High School Teacher	Aug- 21
Teresa Inman	Paris	High School Teacher	Aug- 20
Leigh Vonderheide	Scranton	Middle/Junior High Teacher	Aug-21
Karen Endel	Van Buren	Administration, Middle/JH	Aug- 21
Darla Jeffrey	Waldron	Elementary School Teacher	Aug- 19
Deb Estep	Westside	Middle/Junior High Teacher	Aug- 20

Guidelines:

1 representative from each school district must be on the committee

Balance of Elementary, Middle/JH, and High School personnel

1/2 to 2/3 of members must be classroom teachers

Members serve a 3 - year term, with the exception of the Superintendents that serve a 1 – year term

GUY FENTER EDUCATION SERVICE COOPERATIVE

Arkansas Department of Education Education Service Cooperative (ESC) Annual Report

Date: June 15, 2020

LEA# 24-20

ESC# 14

ESC Name: Guy Fenter Education Service Cooperative

Address: 3010 East Hwy 22, Branch, AR 72928

Phone Number: 479-965-2191

Director: Mr. Roy Hester

Teacher Center Coordinator: Angela Miller

Names of Counties served: Crawford, Franklin, Johnson, Logan, Scott, Sebastian

Number of Districts: 21 & 1 charter school

Number of Students: 43,126

Number of Teachers: 3,364

Governance:

How is the co-op governed? Board of Directors

Executive Committee? Yes

How many members on the Board? 21

Executive Committee? 7

How many times did the Board meet? 15

Executive Committee? 9

When is the regular meeting? August 16, 2019

September 20, 2019

November 15, 2019

December 19, 2019

January 24, 2020

February 11, 2020

March 10, 2020

April 3, 2020 (Zoom)

April 17, 2020 (Zoom)

April 24, 2020 (Zoom)

May 1, 2020 (Zoom)

May 8, 2020 (Zoom)

May 15, 2020 (Zoom)

May 29, 2020 (Zoom)

June 5, 2020 (Zoom)

June 12, 2020 (Zoom)

June 19, 2020 (Zoom)

GUY FENTER EDUCATION SERVICE COOPERATIVE

Date of current year's annual conference: Oct. 23-25, 2019

Does the co-op have a Teacher Center Committee? Yes

If yes, then:

How many are on the Teacher Center Committee? 22

How many members are teachers? 14

How many times did the Teacher Center Committee meet? 3

When is the regular meeting? As scheduled (three times per year)

When was the most recent survey/needs assessment conducted? December 1, 2019 –
January 31, 2020

Have written policies been filed with the ADE? Yes

GUY FENTER EDUCATION SERVICE COOPERATIVE

Staffing 2019-2020

Please list (or attach a list of) all staff members of the co-op (including those housed at the co-op and paid through other sources), their titles and the salary funding sources for the positions. Place an asterisk (*) beside those who are housed at the co-op only and whose salary does not flow through the co-op's budget.

S=State, F=Federal, H=Head Start, M=Medicaid, P=Private Funding, B=Base Funds, D=District Allocations

*	Last Name	First Name	Position	Funding Source	New Hire	Resigned
	Allison	Caryn	Behavior Support Specialist	F		12/20/19
	Arterbury	Abigail	Early Childhood Speech Pathologist Assistant	S		
	Ball	Theresse	Early Childhood Teacher	D/S	8/5/19	
	Ballard	Rebecca	Early Childhood Behavior Intervention Specialist	D/S		
	Beauchamp	Amanda	Early Childhood Speech Pathologist	D/S	8/5/19	
	Beavers	Bill	ESVI Access Technology Specialist	F		
	Beltran	Marisol	Migrant Recruiter	F	7/1/19	
	Brewer	Tammy	Recruitment & Retention Specialist	S	7/1/19	
	Brotherton	Chandra	Literary Specialist	S		
	Churchman	Elizabeth	Early Childhood Teacher	D/S		
	Cobb	Amber	Elementary Science STEM Specialist	S		
	Collie	Deanna	ESVI Consultant	F		
	Couthren	Gwen	Early Childhood Coordinator	D/S		
	Croft	Jo Ellen	ESVI Consultant	F		
	Cupples	Glenda	ESVI Administrative Analyst	F		
*	Curbow	Miranda	Community Health Nurse			
	Debes	Ashley	Early Childhood Teacher	D/S		
	Euston	Elizabeth	Early Childhood Speech Pathologist	S		
	Flores	Rey	Migrant Recruiter	F	8/17/19	
	Floyd	Brittany	Early Childhood Teacher	D/S		
	Grady	Karen	Gifted & Talented Specialist	D/S	7/1/19	
	Hammonds	Alicia	Early Childhood Speech Pathologist	D/S		
	Haynes	Gina	PDC Support/Tech Support	B/S		
	Haynes	Jana	Early Childhood Support Staff	D/S		
*	Henry	Damaris	Migrant State Director			
	Hertlein	Trena	Early Childhood Teacher	D/S		
	Hester	Roy	Director	B		
	Heydenreich	Kayla	Early Childhood Teacher	D/S		
	Huff	Elizabeth	Early Childhood Teacher	D/S		
	Hulan	Ashley	Migrant REDS	F	7/15/19	
	Irby	Candace	Early Childhood Teacher	D/S	8/5/19	
	James	Mindy	Early Childhood Speech Pathologist	D/S		
	Joy	Christena	Early Childhood Support Staff	D/S		
	Kelley	Susan	Early Childhood Teacher	D/S		
	Lamb	Patricia	Early Childhood Support Staff	D/S		

GUY FENTER EDUCATION SERVICE COOPERATIVE

*	Lipe	Sherry	APSCN SMS			4/17/20
	McClure	Melinda	Bookkeeper	B		
	McKee	Jeanna	Literacy Specialist	S		
	Mendez	Cindy	Early Childhood Support Staff/Interpreter	F	2/3/20	
	Michael	Angie	Business Manager	B		
	Miller	Angela	Teacher Center Coordinator	B		
	Morton	Douglas	Technology Coordinator	B/S		
	Nichols	Harvie	Information & Consultation Specialist	D		
	Nicklin	Christi	Early Childhood Speech Pathologist	S		
	Niemczyk	Sharon	ESVI Consultant	F		
	Oberman	Cristin	Specialists/PD Administrative Assistant	S	1/27/20	
	Pearson	Julaine	Early Childhood Specialsit	D/S	8/5/19	
	Peck	Sheila	Migrant Director	F		6/30/20
*	Peugh	Angel	State System Administrator			
	Sanders	Tara	Math Specialist	S	7/1/19	
	Schneider	Lorrie	Inventory/Purchasing/Admin Assistant	B		
	Siebenmorgen	Jamie	Literacy Specialist	S		6/30/20
	Smart	Cathy	Early Childhood Speech Pathologist	D/S	8/5/19	
	Spain	Mark	Migrant Recruiter	F	7/1/19	7/26/19
	Staton	Caitlin	Literacy Specialist	S	7/1/19	
	Strozier	Crystal	Early Childhood Teacher	D/S	8/5/19	
	Tate	Jennifer	Early Childhood Paraprofessional (Time Sheet)	F		
	Terry	Pam	Novice Teacher Mentoring Coordinator	S		6/30/20
	Tinsley	Diana	Early Childhood Paraprofessional (Time Sheet)	F		
	Turner	Jennifer	Career & Technical Ed Coordinator	S/F		
	Upton	Jill	Specialists/Professional Development Administrative Assistant	S		12/28/19
	Varnell	Curtis	Science Specialist	S		
	Vest	Joshua	Migrant Recruiter	F	7/1/19	
	White	Cynthia	ESVI Consultant	F		
	Whitman	John	CTE Accountability Specialist	F		
	Whitman	Stephanie	Math Specialist	S	7/1/19	
	Woodard	Pamela	Early Childhood Teacher	D/S		
	Young	Angyln	ESVI/CAYSI Coordinator	F		

GUY FENTER EDUCATION SERVICE COOPERATIVE

Teacher Center

Please attach a list of all in-service training/staff development workshops offered through the co-op, including month offered, topic, number of districts participating, number of participants and location of workshops. Place an asterisk (*) beside those which provided curriculum assistance. Include a cumulative total of participants. See attached form.

Does the co-op provide media services to schools? No

Do districts contribute dollars to the media services? No

Does the co-op operate a “make-and-take” center for teachers? Yes

If yes, then:

How many teacher visits have been made to the center? (Count all teachers who have visited the center, using duplicate counts for teachers who have visited the center more than once. 55

GUY FENTER EDUCATION SERVICE COOPERATIVE

Administrative Services

Please list administrative services offered through the co-op:

Administrators and local board members training
APSCN Field Support
Assessment data analysis
Bookkeeping assistance
Business Management training
Community School Health Nurse
Computer technician
Conduct Annual Needs Assessment/Planning assistance
Cooperative purchasing
Curriculum support/alignment
Dyslexia training
E-Rate applications
ESC Works Support
eSchool Field Support
ESOL Support/Migrant student Identification
Evaluation procedures (OSR, Federal and Categorical Monitoring, GT Program
evaluation, etc.)
Fingerprinting Services
Gifted and talented assistance
Grant writing assistance
Instructional facilitator training
Literacy/Science/Math specialists
Medicaid Billing
Mentor programs (Novice Teacher Mentoring, Beginning Admin. Mentoring)
Migrant Student Identification
Numerous professional development opportunities for teachers
Perkins Consortium/CTE Coordinator
Personnel application
Psychological Services
Quest Leadership Training
Special education services
Teacher Evaluation and Support System (TESS)
Technology training
TRIAND Field Support

GUY FENTER EDUCATION SERVICE COOPERATIVE

Direct Services to Students

Please list the student services provided through the Co-op:

Behavior Intervention Support – Behavior Support Specialist

Foster Grandparent mentoring program

Gifted/talented programs: **21 participating districts**

Itinerant teachers – please list areas: **Early Childhood**

Low incidence handicapped (vision/hearing)

Mentor Programs: **Novice Teacher Mentoring**

Occupational therapy and physical therapy

Speech therapist

Speech therapy services

Transition assistance

Other (Please specify): **Early Childhood Special Education 3-5 years of age,**

Behavioral Intervention Consultants, Nursing Services

GUY FENTER EDUCATION SERVICE COOPERATIVE

Anecdotal Reports

The Guy Fenter Education Service Cooperative (GFESC) continues to support and assist regional schools in numerous ways, including working with educators on new state standards, data disaggregation and preparation for ACT Aspire assessments, TESS and LEADS 2.0, Professional Learning Communities/High Reliability Schools, Crisis Prevention Institute (CPI) training, Behavior Essentials, Assessment and grading practices, etc. GFESC assisted schools with Alternative Methods of Instruction (AMI) days, and provided support during school closures due to COVID-19. Although COVID-19 cancelled ACT Aspire assessments and face-to-face instruction, workshops and professional development sessions were offered on-site at the Co-op, on-site in the GFESC districts, and virtually as needed/requested. Other GFESC highlights are listed below:

GFESC and University of the Ozarks Partnership

Guy Fenter ESC and the University of the Ozarks partner to serve the Novice Teachers in our cooperative area. The Assistant Professor of Practice of Education/Director of Field Experience served as a part-time Recruitment and Retention Specialist and worked closely with the GFESC Recruitment and Retention Specialist and Teacher Center Coordinator to collaborate and provide a comprehensive support system for novice teachers in the twenty-one area school districts. GFESC Content Specialists also collaborated to help support the novice teachers through their building PLCs and other on-site coaching requested. Novice Teachers were provided professional development opportunities in TESS, Classroom Management, Ethics, Lesson planning, STEM instruction, Dyslexia, Differentiation, Growth Mindset, and multiple other topics. The partnership between GFESC and the University of the Ozarks has provided personalized support for GFESC region Novice Teachers through face to face meetings, on-site coaching and technical support, PLCs, etc. During the 2019-2020 school year, approximately four hundred and fifty novice teachers attended professional development and received on-site coaching support.

GFESC Dyslexia Contacts Meetings

Guy Fenter Education Service Cooperative Dyslexia Contact meetings were developed in collaboration with the Arkansas Department of Education to support our GFESC member districts with their dyslexia needs. Each district selected a Dyslexia contact to attend quarterly sessions at GFESC. The Dyslexia sessions included guest speakers from ADE and other state agencies and focused on improving student learning by identifying and meeting the needs of student with characteristics of dyslexia, collaborating and training for the administration, analysis, and interpretation of initial screeners, level 1 screeners, and level 2 assessments including using various assessment tools. We believe that building capacity is crucial to providing appropriate learning experiences for all students.

GFESC Federal Programs and Curriculum Coordinators' Meetings

GUY FENTER EDUCATION SERVICE COOPERATIVE

The Guy Fenter Education Service Cooperative Federal Programs and Curriculum Coordinators' meetings in collaboration with the Arkansas Department of Education were established as a way to disseminate information regarding Federal Program guidelines and Curricula choices and implementation. The meetings provide opportunities for leaders to share and discuss various topics with their colleagues from other member districts. All 21 of the GFESC school districts participate in the monthly meetings. Federal Programs and Curriculum Coordinators' meetings serve as a venue for ADE to communicate new requirements, explain initiatives, rules, and the implementation of new guidelines and/or curriculum through the Teacher Center Coordinator and other school leaders. We use these meetings to provide support to the leaders in our area schools and to build capacity within our districts.

GFESC Principals' Professional Learning Community and Monthly Meetings

The Guy Fenter Education Service Cooperative Principals' PLC in collaboration with the Arkansas Department of Education was established to assist building leaders as they empower their teachers to increase and improve learning opportunities for all students in their districts. GFESC and ADE partnered in 2019-2020 to host three Leadership Quest Professional Development and collaboration opportunities for our area principals and assistant principals. The first Leadership Quest session for 2019-2020 was attended by our Elementary and Secondary Principals combined all grade levels K-12. The following two Leadership Quest sessions were held separately as K-6 and 7-12 grade bands. The sessions for the 2019-2020 school year were July 23 (K-12), September 19 (7-12), October 23 (K-6), and January 23 (K-6) (7-12) at GFESC.

The regularly scheduled Principals' meetings are designed to provide updates and explanation/clarification of current educational initiatives for the principals in the GFESC region. Meetings are split into Elementary (K-6) and Secondary (7-12) sessions, and give an opportunity for the Teacher Center Coordinator to provide updates and for the principals and assistant principals to share information and/or suggestions with colleagues across the region. This allows for building leaders to stay informed and to build a better capacity for leading the teachers in new and innovative instructional practices.

GFESC hosts Winsor Learning and Wilson Language Foundations training

The Guy Fenter Education Service Cooperative hosted both Winsor Learning and Wilson Language professional development training sessions for the GFESC area school districts. Winsor Learning provided Souday System I and Souday System II trainings to certify area school district employees in the program enabling them to provide intervention.

Wilson Language provided training in Foundations for grades K-3 to train area school teachers to present a carefully structured reading and spelling curriculum using multisensory techniques. This program thoroughly teaches the foundational skills, and significantly supports reading, writing, speaking, and language standards found in the states' rigorous college and career readiness standards. Members from all 21 GFESC districts participated in one or both of the training sessions.

GUY FENTER EDUCATION SERVICE COOPERATIVE

GFESC collaborates with Marzano Research – High Reliability Schools Initiative

The Guy Fenter Education Service Cooperative in collaboration with the Arkansas Department of Education trained the Director and Teacher Center Coordinator on the benefits of High Reliability Schools in Arkansas. HRS is an ADE initiative that provides school districts the opportunity to focus on: (1) Safe and collaborative culture, (2) Effective teaching in every classroom, (3) A guaranteed and viable curriculum, etc. within their own buildings. In addition to ADE professional development opportunities, GFESC hosted Dr. Mike Ruyle from Marzano Research, to work with member districts on the using Level 1 survey data to improve the culture of learning in our area schools. Dr. Mike Ruyle returned in the fall of 2019 and began working with the GFESC districts on using the data from the Level 2 survey to create effective teaching in every classroom

GFESC Annual Leadership Conference

The Guy Fenter Education Service Cooperative provides specialized professional development to Superintendents and Assistant Superintendents in the areas of Data Disaggregation, Ethics, Instructional Leadership, ESSA Score Report, Curriculum Updates, Facility Issues, Legislative Issues/Updates, and Acts 61 and 730 Fiscal Management Training. This Conference provides an opportunity for Superintendents from all member districts to collaborate and discuss current education trends/issues. School leaders from all twenty-one districts, AAEE, Western Arkansas Technical Center, Rural Education Association, etc. attend this conference to provide information and updates for the school district leaders in the GFESC region. The 2019-2020 Superintendent's Fall Conference was held October 23-25, 2019.

GFESC, DESE, and AAEE

Guy Fenter ESC, the Department of Elementary and Secondary Education, and the Arkansas Association of Educational Administrators collaborated provide training for Beginning Administrators. GFESC hosted a regional training session facilitated by Andy Sullivan, Dr. Tina Moore, and Dr. Kathy Morledge. The session included strategies and look-fors when observing in a math classroom/lesson, strategies and practical tools to further administrative coaching abilities and lead a building focused on teaching and learning, and fact/myth scenarios related to the rules and regulations of SPED Law and 504.

GFESC hosts National Speakers, Consultants, and Education Leaders for districts

GFESC has utilized professional development days built in to our cooperative area districts' yearly schedules to host nationally recognized speakers, consultants, and educational leaders. To date, Manny Scott – original Freedom Writer and motivational speaker, Bill Daggett – founder of the International Center for Leadership in Education, Joe Sanfelippo – 2019 National Superintendent of the Year, Tim Brown – Solution Tree: Assessment and Grading, and Kenneth Williams – Solution Tree: School Culture and Learning have presented to the administrators and teachers from the 21 GFESC school districts. These events have provided districts the opportunity to network and

GUY FENTER EDUCATION SERVICE COOPERATIVE

come together as a cooperative region to promote a growth mindset and positive outlook for the upcoming school year.

GFESC partners with Walton Arts Center for “The Unexpected” PD

In partnership with the Walton Arts Center, GFESC classroom teachers and Visual Arts Specialists attended a professional development event centered around [The Unexpected](#) project in downtown Fort Smith, AR. The teachers toured works of public art, explored online resources and engaged in discussions with peers’ ideas for integrating public art across the curriculum.

GFESC has formed partnerships with area business organizations and colleges

The Guy Fenter Education Service Cooperative has formed partnerships with local businesses and higher education institutions to further the work of career development in the region. Examples of the partnerships are listed below:

- Bank OZK and ABB (Baldor) are local businesses that help to bridge the gap between education and industry to provide the skills necessary for kids to be successful in the workplace
- Fort Smith Chamber of Commerce and the Western Arkansas Planning and Development District supported GFESC through partnering to serve educators and students with local business partners
- University of Arkansas Fort Smith and Arkansas Tech University Ozark provide continuing education for students and help with make the connection between high school and college, and the emerging job market.
- Gerdau, ArcBEST, Trane, and ABB (Baldor) partnered with GFESC districts to provide industry tours for educators with the intent of promoting an understanding of industry and manufacturing

GFESC and Local School District Partnership

The Guy Fenter Education Service Cooperative mission is to assist the member schools in more effective and more equitable use of their shared resources and to provide shared services for the better education of their children and youth.

GFESC partnered with the Arkansas Public School Resource Center and Stephens Financial Services to provide School Board training at the Co-op campus. Act 1775 of 2005, requires that all school board members receive six hours of training per year, with the newly elected board members to receive nine hours of training during the first year. GFESC provided school board training twice during the 2019-2020 school year at the cooperative.

GFESC partnered with Social Sentinel to provide a comprehensive safety platform at a reduced Co-op rate to sixteen of our twenty-one member districts. The Social Sentinel platform helps districts to keep their students safer by respectfully accessing the digital conversations happening publicly on social media. This platform provides alerts,

GUY FENTER EDUCATION SERVICE COOPERATIVE

insights, discussions, or trending topics to designated school personnel to increase awareness of what's happening outside the walls as well as inside them.

GUY FENTER EDUCATION SERVICE COOPERATIVE

Employment Policies and Practices 2019-2020

Act 610 of 1999 requires that each educational service cooperative report the following information:

EMPLOYED

Number of new males employed by the cooperative for the 2019-2020 school year:

For this number above, please provide the number in each of the following racial classifications:

White 2

African American 0

Hispanic 1

Asian 0

American Indian/Alaskan Native 0

Native Hawaiian or Pacific Islander 0

Number of new females employed by the cooperative for the 2019-2020 school year:

For this number above, please provide the number in each of the following racial classifications:

White 13

African American 0

Hispanic 2

Asian 0

American Indian/Alaskan Native 0

Native Hawaiian or Pacific Islander 0

TERMINATED

Number of males terminated by the cooperative during the 2019-2020 school year:

For this number above, please provide the number in each of the following racial classifications:

White 0

African American 0

Hispanic 0

Asian 0

American Indian/Alaskan Native 0

Native Hawaiian or Pacific Islander 0

Number of females terminated by the cooperative during the 2019-2020 school year:

For this number above, please provide the number in each of the following racial classifications:

White 0

African American 0

Hispanic 0

Asian 0

American Indian/Alaskan Native 0

Native Hawaiian or Pacific Islander 0

GUY FENTER EDUCATION SERVICE COOPERATIVE

SEEKING EMPLOYMENT

Number of males seeking employment by the cooperative during the 2019-2020 school year:

For this number above, please provide the number in each of the following racial classifications:

White 8

African American 1

Hispanic 1

Asian 0

American Indian/Alaskan Native 0

Number of females seeking employment by the cooperative during the 2019-2020 school year:

For this number above, please provide the number in each of the following racial classifications:

White 0

African American 0

Hispanic 2

Asian 0

American Indian/Alaskan Native 0

GUY FENTER EDUCATION SERVICE COOPERATIVE

Program: Accounting 2019-2020

Funding Source: Base

Competitive Grant: No

Restricted: Yes

Participating Districts:

Alma, Booneville, Cedarville, Charleston, Clarksville, County Line, Fort Smith, Greenwood, Hackett, Lamar, Lavaca, Magazine, Mansfield, Mountainburg, Mulberry/Pleasant View Bi-County, Ozark, Paris, Scranton, Van Buren, Waldron, Westside

Personnel

Name	Position	Degree
Angie Michael	Business Manager	HSD
Melinda McClure	Bookkeeper	HSD

Goal

To provide financial support to all programs and participating districts of the cooperative.

Program Summary

2019-2020 State Funding Source:

Base Funding \$478,005

Professional Development \$209,761

Technology Coordinator \$80,000

Content Specialists \$720,000

Community Health Services \$6,000

Early Childhood State Grant \$790,920

Early Childhood Special Education Extended School Year \$814

Workforce Ed. Coordinator \$50,000

Gifted and Talented Specialist \$30,000

Teacher Center \$221

APSCN \$4,200

Information Specialist \$47,250

Gifted and Talented LEA \$41,240

Early Childhood LEA \$377,010

Mentoring \$345,000

2019-2020 Federal Funding Source:

Behavior Support Specialist \$110,000

Carl Perkins Grant \$575,177

Early Childhood Federal Grant \$283,541

ARMAC \$18,263

Medicaid \$64,186

Migrant \$515,382

GUY FENTER EDUCATION SERVICE COOPERATIVE

Special Education Mentoring \$20,000
Education Services for Visually Impaired \$717,000

GUY FENTER EDUCATION SERVICE COOPERATIVE

Program: ADE/APSCN Student Management Systems Field Analyst

Funding Source: Arkansas Department of Education

Participating Districts:

Alma, Booneville, Cedarville, Charleston, Clarksville, County Line, Fort Smith, Future School of Fort Smith, Greenwood, Hackett, Lamar, Lavaca, Magazine, Mansfield, Mountainburg, Mulberry/Pleasant View Bi-County, Ozark, Paris, Scranton, Van Buren, Waldron, Westside

Personnel:

Name	Position	Degree
Sherry Lipe	APSCN SMS Field Analyst	AAS

Goal:

To provide end-user support to district student users of the SMS statewide student management system, Cognos reports, and meeting statewide guidelines.

Program Summary:

The Student Applications Field Analyst provides services to districts within Arkansas that utilize the SMS statewide student management system software. The software is used to store district, school, and student data. Student Management Systems Applications is a computer software used primarily to process and maintain student records. The SunGuard student management systems applications provided by APSCN include: Demographics, Attendance, Scheduling, Report Cards, Transcripts, TAC, HAC, Cognos, Discipline and Medical. With the use of nine cycles yearly, districts electronically submit data to the ADE. The student field analyst provides districts with consulting and training workshops through meetings at the Cooperative, school visits, and communicating closely by e-mail and telephone. Various trainings offered throughout the year include, but are not limited to, SMS Required Fields for State Reporting, New Personnel, Cognos Report Writing, Next Year Scheduling and Year End Rollover.

Major Highlights of the Year:

Training of the eSchool Software

20 Total Training/Workshop Days at Guy Fenter Co-op for 2019-2020. Multiple sessions

scheduled for March – June were cancelled due to COVID-19.

8 Visits to various districts to assist with training or help with problems.

GUY FENTER EDUCATION SERVICE COOPERATIVE

Program: Arkansas Transition Services

Funding Source: Federal Grant

Competitive Grant: No

Restricted: Yes

Participating Districts:

NWAESC Districts:

AR Arts Academy	AR Connections Academy	Bentonville
Decatur	Elkins	Farmington
Fayetteville	Gentry	Gravette
Greenland	Haas Hall Academy	Huntsville
Lincoln	Pea Ridge	Prairie Grove
Rogers	Siloam Springs	Springdale
NWA Classical Academy		West Fork

O.U.R. Districts:

Alpena	Bergman	Berryville
Cotter	Deer/Mt. Judea	Eureka Springs
Flippin	Green Forest	Harrison
Jasper	Lead Hill	Omaha
Ozark Mountain	Searcy County	Valley Springs
Yellville/Summit		

GFESC Districts:

Alma	Booneville	Cedarville
Charleston	Clarksville	County Line
Fort Smith	Future School of Fort Smith	Greenwood
Hackett	Hartford	Lamar
Lavaca	Magazine	Mansfield
Mountainburg	Mulberry	Ozark
Paris	Scranton	Van Buren
Waldron	Westside	

Personnel:

Name	Position	Degree
Paul Johnston	Transition Consultant	MM, BSE, AAS

Goal:

To provide district, regional, and state-wide trainings throughout the year to prepare teachers to help Special Education students reach their post school goals as stated on their Transition Plans per their IEP. To provide consults with participating districts to assist students, parents, and teachers in assisting students to reach their post school

GUY FENTER EDUCATION SERVICE COOPERATIVE

goals. To develop and facilitate local Transition Teams for school districts. To assist LEAs in folder reviews to ensure Transition Plans on the IEP are accurate and help students to reach their post school goals.

Program Summary:

Arkansas Transition Services (ATS) is a small, hardworking consultant group which serves Arkansas school districts in affiliation with the Arkansas Department of Education, Special Education Unit. Although each transition consultant serves different parts of the state, we work as one unit to provide the best technical assistance and training opportunities for transitioning students in special education to life after high school. Arkansas Transition Services serves all 75 counties in Arkansas in an effort to improve transition outcomes for students with disabilities. Our mission is to effectively assist students with disabilities, educators, parents, agency personnel and community members in preparing students to transition from school to adult life and reach positive post-school outcomes. We provide technical assistance, trainings and consultations to special education teachers and other relevant staff, as well as to various agency personnel. Our services are provided at no cost.

Major Highlights of the Year:

State Level

- Arkansas Transition Services held 2 Cadre meetings in Little Rock where the local Transition teams came together to receive professional development in transition assessments, student focused planning, practice profiles, agencies, and post school options. These events provide opportunities for continued team planning and networking. NWAESC schools attending - Bentonville, Rogers, and Siloam Springs. Guy Fenter schools attending - Greenwood and Paris.
- The Arkansas Interagency Transition Partnership (AITP) held the 7th Annual AITP Summer Connections as a way for district personnel around the state to learn about a variety of agency services. This year we focused on students with more severe disabilities.
- AITP has developed, printed, and handed out to schools/parents/agencies, a Resource Guide. These guides were developed for schools and agencies to give to parents as a way to help increase parental awareness of the importance of transition and resources to help with transition as early as possible. The Guides are available in English and Spanish.
- Arkansas Transition Services provided 2 statewide trainings in Universal Design for Learning (UDL) and served over 100 teachers and staff members in Special Education and CTE. NWAESC schools participating - Bentonville, Rogers, and Siloam Springs. Guy Fenter schools participating - Clarksville, Hackett, Paris and Waldron. OUR schools participating - Harrison.

GUY FENTER EDUCATION SERVICE COOPERATIVE

- CIRCLES-Arkansas Transition Services has been piloting and training schools around the state to implement Communicating Interagency Relationships and Collaborative Linkages for Exceptional Students (CIRCLES). This is an evidence based program for connecting students with agencies that can help the student have positive post-school outcomes. Rogers has been one of our State Leadership Districts and is helping new schools in the implementation of CIRCLES. In the Guy Fenter Co-op, Greenwood has been trained and will hopefully start implementing this fall.
- The next 2 major state highlights had to be cancelled due to Covid-19
 - For the fourth year Arkansas had the opportunity to host a Film Camp run by Inclusion Films and Joey Travolta. This would have been held the last week in April in Little Rock at Pulaski Tech. It is one of many camps held across the country for High School students with disabilities to learn about the film industry and produce their own films. We were well on our way to exceed our 50 student maximum when we had to cancel.
 - This summer would have been the 14th annual College Bound Arkansas. This is a yearly event held in collaboration with University of Central Arkansas. It is a three-day residential program intended to increase students with disabilities knowledge of accommodations, assistive technologies, leadership skills, and other exciting aspects of college life. Parents and professionals are also invited to attend and learn about the possibilities for their children and students at the college level. The 2019 program had 18 students and 11 parent/professionals in attendance. ATS is working on a way to provide a Virtual College Bound for student/parents later this coming summer.
- State Level Organizations Served:
 - AITP - Executive Committee
 - Arkansas Council on Exceptional Children (AR-CEC) sub-division Division of Career Development and Transition (DCDT) - State President
 - Local Planning Team for DCDT International Conference in Little Rock, AR October of 2020.
 - Member of the State Core Team for National Technical Assistance Center Transition (NTACT) Intensive Technical Assistance State

Coop Level

- OWL Schools. Opportunities for Work Based Learning is a collaboration of Arkansas Rehabilitation Services, Arkansas Transition Services, and area districts that enables schools to provide work programs, both School Based

GUY FENTER EDUCATION SERVICE COOPERATIVE

Enterprises and students working in the community, where students can get paid work experiences and job training.

- GFESC – Alma, Greenwood, Ozark
- NWAESC – Gravette, Huntsville, Springdale-Harber, Rogers-Heritage
- Transition Fairs – ATS promotes and provides technical assistance for districts and regions that want to have a Transition Fair. The fairs are opportunities for students, parents, and teachers to connect with state and local agencies that can provide assistance.
 - GFESC
 - Greenwood held a regional fair in Fall 2019
 - NWAESC
 - Both Springdale and Bentonville had Transition Fairs scheduled for Spring of 2020 but had to cancel due to Covid-19.
 - OUR
 - Had a regional Transition Fair scheduled for Spring of 2020 but had to cancel due to Covid-19. The team from OUR is working on a “Virtual” Transition Fair.
- Focused Transition Nights
 - GFESC
 - Greenwood has continued with Focused Transition Nights this year. These are held each quarter for parents/families to get specific information on things like the Arkansas Work Incentives (Project AWIN), Medicaid Waiver program, College information, etc.
 - NWAESC
 - Bentonville held their first Transition Night for Parents and Students.
- Coop Trainings – 2 days of trainings (4 half day sessions) were offered at all 3 Co-ops.
 - “Transition Toolkit”
 - “Transition Assessments: The Who, What, When, Where, Why and How”
 - “Evidence Based Practices for Secondary Students in Special Education”
 - “Introduction to Person Centered Planning”
 - 122 attendees
 - NWAESC – Springdale, Farmington, Bentonville, Arkansas Arts Academy, Pea Ridge, Siloam Springs, Arkansas Support Network, NWAESC

GUY FENTER EDUCATION SERVICE COOPERATIVE

- OUR – Cotter, Harrison, Omaha, Alpena, Eureka Springs, Western Grove
- GFESC – Fort Smith, Ozark, Hackett, Mulberry, Alma, Cedarville, Waldron, Greenwood, Lavaca
- Additional Trainings
 - NWA Classical Academy-Modified Toolkit-6 attendees
- Transition Requirements Review was given to 30+ teachers
 - NWAESC – Bentonville, Fayetteville (Zoom during school building shutdown)
 - OUR – Alpena, Deer, Searcy County, Western Grove
 - GFESC – Greenwood, Fort Smith, Lamar, Mountainburg, Mulberry
- Transition Class Consults were given to 2 districts
 - GFESC – Fort Smith, Greenwood
- Transition File Review
 - NWAESC – Huntsville, Gentry, Decatur
 - OUR - Harrison, Cotter
- Transition Summary of Performance Review
 - NWAESC – AR Connections Academy (Zoom)
- Transition Assessment Consultation
 - NWAESC - Springdale Harbor
- Evidence Based Practices Consult
 - NWAESC - Greenwood
- Presentations to Students
 - NWAESC – Pathfinders, UARK Undergraduate Transition Class, UARK Teaming 4 Transition Graduate Class
 - GFESC - Presented 4 sessions to students at Greenwood Transition Fair
- Meetings regularly attended
 - AASEA Area I and Area II (Special Education Supervisors)
 - AR-CEC Board Meetings
 - AITP Board and General Membership Meetings
 - Project Search partners

GUY FENTER EDUCATION SERVICE COOPERATIVE

- Sebastian, Crawford and surrounding Counties/Mercy Hospital/Access
- Goodwill Rogers Lunch and Learns
- Transition Team Meetings
 - NWAESC - Bentonville
 - GFESC – Greenwood, Ozark
- Trainings/Conferences Attended:
 - NTACT National Capacity Building Institute – Charlotte, NC
 - Arkansas SPED Consultant Training
 - Arkansas LEA Academy
 - Division of Career Development and Transition International Conference - Seattle, WA
 - DESE Alternate Diploma Training
 - Deaf/Blind Training
 - SDLMI Training

GUY FENTER EDUCATION SERVICE COOPERATIVE

Program: K-12 Behavior Support Specialist

Funding Source: The K-12 Behavior Support Specialist Grant is funded through the Arkansas Department of Education/Special Education Unit with federal grant funds that are provided for within the scope of the annual state application under Part B of the IDEA. The annual Part B application requires a description of the proposed use of federal grant funds reserved under 20 U.S.C.A. 1411(e)(2)(A) for both required and authorized activities that support the State Performance Plan (SPP) under IDEA.

Competitive Grant: No

Restricted: Yes

Participating Districts:

Alma, Booneville, Cedarville, Charleston, Clarksville, County Line, Fort Smith, Greenwood, Hackett, Hartford, Lamar, Lavaca, Magazine, Mansfield, Mountainburg, Mulberry/Pleasant View Bi-County, Ozark, Paris, Scranton, Van Buren, Waldron, Westside

Personnel:

Name	Position	Degree
Caryn Allison	Behavior Support Specialist	MED +

Goal:

To provide technical assistance for school personnel, special education administrators, and school district administrators for special education students with behavioral needs; to be knowledgeable on evidence-based behavioral interventions to assist school districts; and to build capacity of special education departments and cooperative school districts in behavioral interventions, functional behavioral assessments, and behavior intervention plans.

PROGRAM SUMMARY:

The Behavior Support Specialist (BSS) position provides technical assistance in the area of behavior to all school districts within the Guy Fenter Education Service Cooperative. The BSS receives requests for technical assistance through the CIRCUIT on-line referral system. Once a request for services is received, the BSS works in conjunction with the Special Education Supervisor for the referring school district to identify and provide needed support for students with disabilities. Services include:

- On-site consultation, student observation, record review and written recommendations with follow up and training as needed

GUY FENTER EDUCATION SERVICE COOPERATIVE

- Assistance with Functional Behavior Assessment (FBA) and Behavior Intervention Plan (BIP) development
- Assistance with autism identification and programming
- Professional development opportunities on evidence-based interventions
- The BSS also attends monthly meetings with the other cooperative BSS and area Special Education Supervisors monthly meetings.

The BSS provided on-site consultation, student observation, record review, conference attendance, specialized evaluations, assistance with functional behavior assessment, crisis and behavior intervention planning for 5 students (Autism, Multiple Disabilities, Speech Language Impairment, Other Health Impaired) for the following school districts: Mulberry, Westside, Waldron and Ozark.

The BSS also redesigned the Essentials Trainings and offered 3 sessions with a total of 42 participants from the following school districts: Paris, Booneville, West Fork, Cedarville, Greenwood, and Van Buren.

The Behavior Support Specialists (BSS) also provide training and coaching as part of the BX³ (Behavior eXtreme 3 – Training, Coaching, Empowering) project. The BX³ project is designed to build the local capacity of districts in working effectively with students with challenging behaviors and is aligned to the Arkansas State Systemic Improvement Plan.

This multi-year initiative has two goals. The first goal is to increase the knowledge base and capacity of educators regarding the development of legally defensible Functional Behavioral Assessments (FBA) and Behavioral Intervention Plans (BIP) based on evidence-based practices. This will be accomplished through providing district BX³ teams with professional development around effective supports for students exhibiting moderate and severe behaviors followed by on-site coaching opportunities. The second goal is to empower the BX³ team to develop, train, and sustain behavior-related procedures across the district to improve the outcomes of students with challenging behaviors.

The BSS with fellow colleagues trained and coached the Greenwood School District as part of the BX3 Project with 6 trainings and 5 on-site coaching sessions.

Major Highlights of the Year:

Attended the 2019 Arkansas Collaborative Consultant Conference

Attended the 2019 LEA Academy in Hot Springs

Presented at the 2019 Arkansas Council for Exceptional Children Conference

GUY FENTER EDUCATION SERVICE COOPERATIVE

Program: Career & Technical Education

Funding Source: Carl D Perkins Funding

Competitive Grant: No

Restricted: Yes

Participating Districts:

Alma, Booneville, Cedarville, Charleston, Clarksville, County Line, Greenwood, Hackett, Hartford, Lamar, Lavaca, Magazine, Mansfield, Mountainburg, Mulberry/Pleasant View Bi-County, Ozark, Paris, Pea Ridge, Scranton, Waldron, Westside, and Van Buren.

Personnel:

Name	Position	Degree
Jennifer Turner	CTE Coordinator	MSE
John Whitman	CP Accountability Specialist	BS

Goal:

The GFESC Carl Perkins Program promotes reform, innovation, and continuous improvement in vocational and technical education to ensure that students acquire the skills and knowledge they need to meet challenging State academic standards and industry-recognized skill standards, and to prepare for postsecondary education, further learning, and a wide range of opportunities in high-skill, high-wage careers.

Program Summary:

The GFESC Carl Perkins Program addresses and provides assistance to develop high-quality programs that:

integrate academic and vocational education

promote student attainment of challenging academic and vocational and technical standards

provide students with strong experience in, and understanding of all aspects of an industry

address the needs of individuals who are members of special populations

involve parents and employers

provide strong linkages between secondary and postsecondary education

GUY FENTER EDUCATION SERVICE COOPERATIVE

develop, improve and expand the use of technology

provide professional development for teachers, counselors, and administrators

The CTE Coordinator is required to write the annual application and distribute/spend the funding for area schools on indicator projects approved by the Arkansas Department of Career Education. Required reports, technical assistance, professional development, state start up grant writing, and administrative assistance are other duties provided by the program.

Major Highlights of the Year:

The GFESC Carl Perkins Consortium hosted our 2nd DECA Summit for students and teachers to explore the opportunities in Career and Technical Student Organizations. The event was located at GFESC with over 100 students participated and cooperatively worked together. It was student led and driven. All participating students and teachers felt a special connection and asked to participate again in the future.

All schools in GFESC participated in a program called Peak Performance University or PPU that used interactive media to teach workplace and social skills tailored to Arkansas youth's needs. All 21 school districts sent teachers to be trained and had the opportunity to use the program.

All GFESC School districts participated in the GFESC Regional Advisory Council where educators and industry come together to collaborate and learn about business and industry needs. Randy Zook from the State Economic Development presented state employment facts and figures.

Over 5000 students received industry recognized certifications, an increase in over 1000 certifications.

Superintendents from GFESC Carl Perkins Consortia board attended ACTE Region 4 in Oklahoma City to learn about new opportunities for CTE programs.

Through grant writing assistance from the program, the following schools received a total of \$133,620.55 in CTE State start-up grants:

Mansfield-Orientation to Teaching	\$19,823.91
Pea Ridge- Computer Science	\$17,418.20
Van Buren-CASE Ag Natural Resources	\$9350
Van Buren-Food Production	\$43,745.25
Van Buren-Consumer Service	\$29,951.45

GUY FENTER EDUCATION SERVICE COOPERATIVE

Van Buren-Medical Office	\$13,332.0
Total:	\$133,620.55

GUY FENTER EDUCATION SERVICE COOPERATIVE

Program: Consolidated Purchasing Services

Funding Source: Member Districts

Participating Districts:

Alma, Cedarville, Charleston, County Line, Hackett, Lamar, Lavaca, Magazine, Mansfield, Mountainburg, Mulberry/Pleasant View, Ozark, Paris, Scranton, Van Buren, Waldron, Westside

Personnel:

Name	Position	Degree
Roy Hester	Director	MED +
Lorrie Schneider	Administrative Assistant	HSD

Goals:

The goal of Consolidated Purchasing Service is to save money for member schools, to provide convenience and save time for member districts.

Program Summary:

The GFESC seeks bids on instructional material, specifically types of paper, to provide member districts with savings on the materials that they would have to order from other sources.

Major Highlights of the Year:

17 member districts participated, along with GFESC, in the Consolidated Purchasing Services and secured materials from successfully bidding vendors.

GUY FENTER EDUCATION SERVICE COOPERATIVE

Program: Digital Learning – Team Digital, Arkansas Connect2Digital

Funding Source: Arkansas Department of Education

Competitive Grant: No

Restricted: Yes

Participating Districts:

Alma, Booneville, Cedarville, Charleston, Clarksville, County Line, Fort Smith, Greenwood, Hackett, Hartford, Lamar, Lavaca, Magazine, Mansfield, Mountainburg, Mulberry/Pleasant View Bi-County, Ozark, Paris, Scranton, Van Buren, Waldron, Westside

Personnel:

Name	Position	Degree
Evan Patrick	Team Digital Lead	BS
Lisa Russell	Team Digital Lead	BSE
Gerard Newsom	Team Digital Member	BA
Amanda Perry	Team Digital Member	BA, MED, EDS
Sherry Kennedy	Team Digital Member	BSE
Dexter Miller	Team Digital Member	BA
Steven Walker	Team Digital Member	BSE, MSE
Tammy Manning	Team Digital Member	MSE

Goal:

To provide expertise in personalized lesson design and innovative school models while helping educators transform system-centered practices into student-focused practices.

Program Summary:

Team Digital:

Team Digital works within a state team to support the planning, implementation, and evaluation of digital learning environments in Arkansas. Team Digital has expertise in emerging online teaching and learning practices that allow for active learning; effective content authoring and lesson design methods that best serve digital education; and strategies in helping educators transform system-centered practices into student-centered practices. Team Digital interacts with media production workgroups, learning management system consultants, technology solution experts, pedagogical experts, curriculum design experts, and educators around the globe. Team Digital also provides operational support to state projects, Arkansas cooperatives, and public schools in the growing interest in blended and online learning. www.teamdigital.org

GUY FENTER EDUCATION SERVICE COOPERATIVE

Arkansas Connect2Digital:

Arkansas Connect2Digital is a digital platform where Arkansas educational agencies house digital resources and implement blended professional learning. It supports 20,000 users and is managed by Team Digital. In addition to professional learning, Connect2Digital.org's platform is used to deliver the Arkansas Civics Exam. This platform supports over 100,000 users including administrators, teachers, and students.

Major Highlights of the Year:

- Development and hosting of an assessment for educators who wish to add an online teaching endorsement to their Arkansas teaching license.
- Held statewide school consultations on the planning and implementation of Blended Learning.
- Offer daily support to schools in the implementation of Act 1280: Digital Learning Requirement.
- Hosted Zoom webinars for Arkansas educators - 122 total webinars hosted for DESE with 6,320 total participants.
- Representative on the state Cyber Response Team.
- Redesign of professional learning sessions to optimize a blended learning format with 500 educators attending.
- Host and support online training modules for 5 DESE initiatives with over 2,000 users.
- Contributed to the development of an elective credit student success blended course. The goal is for students to find the motivation to succeed and look to the future with a plan.
- Showcased Pangburn District for Digital Learning Day with captured video of their digital learning program.
- In response to the COVID-19 pandemic, our team provided remote learning resources, support, and training to schools, cooperatives, and educators. Resources developed included Choosing Digital Content, Communicating with Students, G Suite - Google Apps, Home Access for Internet Solutions, Using Hyperdocs, Using Nearpod, and Tips for Teaching Remotely. The Digital Learning Specialists were available by phone, email, text, and Zoom. Team Digital hosted the following virtual workshops and implemented website components from March-May:
 - Zoom 101 - 3,500 participants
 - Google Classroom 101 - 736 participants
 - Google Meet - 300 participants
 - "How to Transition Your Professional Learning Online" workshop for DESE staff and cooperative specialists - 250+ participants
 - Piloted Wifi on the Bus to nine (9) area schools at Great Rivers Educational Cooperative.
 - CDC 1801 School Health training - School health representatives of 11 states, in coordination with the CDC, were trained on how to transition to blended/online professional learning sessions.
 - Emergency Preparedness page with Arkansas Covid-19 resources was created on teamdigital.org resulting in over 900% increase in website traffic since February 2020 and Twitter reach went up 2838%.

GUY FENTER EDUCATION SERVICE COOPERATIVE

Program: Early Childhood

Funding Source: Federal Grant, State Grant, Local School Districts

Competitive Grant: No

Restricted: Yes

Participating Districts:

Alma, Booneville, Cedarville, Charleston, Clarksville, County Line, Greenwood, Hackett, Lamar, Lavaca, Magazine, Mansfield, Mountainburg, Mulberry/Pleasant View Bi-County, Ozark, Paris, Scranton, Van Buren, Waldron, Westside.

Personnel:

Name	Position	Degree
Gwen Couthren	Early Childhood Coordinator	MED
Elizabeth Churchman	Early Childhood Teacher	BSE
Trena Hertlein	Early Childhood Teacher	MED
Mindy James	Speech-Language Pathologist	MED
Susan Kelley	Early Childhood Teacher	BSE
Trish Lamb	Paraprofessional	BS
Christi Nicklin	Speech-Language Pathologist	MSE
Pam Woodard	Early Childhood Teacher	BSE
Liz Huff	Early Childhood Teacher	BSE
Ashley Debes	Early Childhood Teacher	MED
Beth Euston	Speech-Language Pathologist	MED
Amanda Beauchamp	Speech-Language Pathologist	MED
Kayla Heydenreich	Early Childhood Teacher	BSE
Brittany Floyd	Early Childhood Teacher	BSE
Becky Ballard	Behavior Interventionist	MSE
Jennifer Tate	Paraprofessional	HSD
Diana Tinsley	Paraprofessional	HSD
Christena Joy	Paraprofessional	HSD
Jana Haynes	Paraprofessional	HSD
Alicia Hammonds	Speech-Language Pathologist	MSE

GUY FENTER EDUCATION SERVICE COOPERATIVE

Abigail Arterbury	Speech-Language Pathology Asst.	BSE
Julaine Pearson	Speech-Language Pathologist	MSE
Cathy Smart	Speech-Language Pathologist	MSE
Candace Irby	Early Childhood Teacher	BSE
Theresse Ball	Early Childhood Teacher	MED
Crystal Strozier	Early Childhood Teacher	MED
Cindy Mendez	Interpreter/paraprofessional	HSD

Goal:

- To provide special education and related services for children with disabilities from age three to six.
- To provide transition services from Early Intervention Services to Early Childhood Services, and from Early Childhood to School Age programs.
- To participate in a local interagency coordination council (ICC), and a special education advisory committee.

Program Summary:

The Guy Fenter Education Service Cooperative Early Childhood Program provides special education and related services to eligible children, ages three to six, under Individuals with Disabilities Education Act (IDEA).

Early childhood special education services are provided on an individual basis so that their developmental/educational needs are met. Services may include screening, evaluations, speech-language therapy, direct/consultative developmental instruction, behavior intervention, physical therapy, occupational therapy, and counseling. Special education services must be provided in the least restrictive environment. Services may be provided in homes, preschools, Head Start centers, early childhood operated classrooms, or on local school district campuses. All services are provided through a written Individualized Education program that details what each child's specific needs are, with the ultimate goal being to prepare that child for Kindergarten by bringing skills up to age level.

Major Highlights of the Year:

376 students returned in August.

December 1 Child Count was 657 students.

Transitioned more than 295 students to Kindergarten with special education services recommended.

More than 350 students received developmental screenings (by Coop employees)

More than 585 developmental and/or speech evaluations completed.

GUY FENTER EDUCATION SERVICE COOPERATIVE

Program: Educational Services for the Visually Impaired (ESVI) and The Arkansas Project-Children and Youth with Sensory Impairments and additional disabilities (CAYSI)

Funding:

ESVI is a statewide educational consultative service program administered by the Arkansas Department of Education, Division of Elementary and Secondary Education-Special Education Unit. CAYSI is funded by the Arkansas Department of Education, Division of Elementary and Secondary Education-Special Education Unit.

ESVI's regional vision consultants are funded through the following Education Service Cooperatives:

Guy Fenter Educational Service Cooperative staff:

Name	Position
AngylN Young	TVI/COMS, State Director of ESVI and CAYSI
Glenda Cupples	ESVI Administrative Analyst
Bill Beavers	ESCI Access Technology Specialist
Cynthia White	TVI/COMS, ESVI Educational Vision Consultant
Deanna Collie	TVI, Educational Vision Consultant
Jo Croft	TVI/COMS, ESVI Educational Vision Consultant
Sharon Niemczyk	TVI/COMS, ESVI Educational Vision Consultant

Northwest Arkansas Service Cooperative staff:

Name	Position
Marsha Holder	TVI/COMS, ESVI Educational Vision Consultant
Christi Gadberry	TVICOMS, ESVI Educational Vision Consultant

Crowley's Ridge Education Service Cooperative:

Name	Position
Paige Dillinger	TVI, ESVI Educational Vision Consultant

Southeast Arkansas Education Service Cooperative:

Name	Position
Melanie Birthright	TVI/COMS, ESVI Educational Vision Consultant

Goal:

Educational Services for the Visually Impaired collaborates with school districts, parents, and communities to provide support that empowers them to remove educational and environmental barriers and to create solutions that foster independence for all students with visual impairments.

GUY FENTER EDUCATION SERVICE COOPERATIVE

Program Summary:

Educational Services for the Visually Impaired Consultants provide recommendations for accommodations to enhance the student's opportunities for learning; develop district building level support teams to meet the needs of students who are blind or visually impaired ages 3 through 21 in educational programs; conduct Learning Media and Functional Vision Assessments; make recommendations for individual student access to educational curriculum; provide large print or Braille textbooks through the Instructional Materials Center; demo, loan, and provide instruction and consultation in the use of assistive technology and low vision devices; provide direct instruction in Orientation and Mobility in the school and local communities. In addition, professional development opportunities are offered to parents, teachers and related staff.

ESVI and CAYSI collaborative agreement:

ESVI and CAYSI has a signed collaborative agreement documenting their commitment to work together. These agencies will share resources, expertise, time, and effort, as appropriate to address specific needs. This collaboration will strengthen the impact of each agency's efforts.

a. Collaborating consultants provide training and information needed to develop and implement individualized supports to ensure that children who are deafblind have access to and progress in the general education curriculum, and access to high-quality educational opportunities that lead to successful transitions to postsecondary education or employment.

b. Collaborating consultants join together for learning opportunities that increase knowledge and share practices for service providers in order to increase outcomes for children with deaf blindness in Arkansas.

The CAYSI Project Director oversees the grant activities, performs administrative duties, and ensures that the policies and procedures of the state are followed. Responsibilities to the project include providing leadership through regular meetings with project staff, regular communication with NCDB, maintaining budget accountability, writing and submitting the annual performance report, grant preparation and writing, and overall project evaluation. In addition, the director will assist in the collaboration with other agencies and provide leadership by communicating with OSEP to learn about opportunities available to grantees.

ESVI's Central Office is located at:

1401 West Capitol Avenue, Victory Building, Suite 425, Little Rock, AR 72201

GUY FENTER EDUCATION SERVICE COOPERATIVE

Program: Foster Grandparent Program

Funding Source: Corporation for National and Community Service

Competitive Grant: No

Restricted: Yes

Participating Districts: Ashdown, Booneville, Charleston, Clarksville, Cossatot River, County Line, Dee's Day Care, DeQueen, Foreman, Fort Smith, Fun and Learn, Hackett, Horatio, Howard County Children's Center, Lamar, Lollipops & Gumdrops Day Care, Mena, Mineral Springs, Nashville, Oden, Ouachita River, Ozark, Polk County Developmental Center, Scranton, Van Buren, Westside.

Personnel:

Name	Position
Terri Williams	Project Director
Nelda Scoggins	Volunteer Coordinator
Ann Frachiseur	Volunteer Coordinator

Goal:

Enable men and women 55 years and over to remain active and find ways to serve their community.

Enable children with special needs to improve academically, developmentally, and socially.

Program Summary:

The Foster Grandparent Program is a federally funded program whose purpose is to offer Senior Citizens, 55 years of age and over, the opportunity to serve as mentors and tutors for children with special needs. These senior volunteers provide 15 to 40 hours' weekly service to community organizations such as schools, day cares, and pre-schools.

Major Highlights of the Year:

Seventy Foster Grandparents tutored and mentored 350 students from pre-school to 9th grade

Ninety-one percent of students (End of Year Assessments received as of April 30, 2018) assigned to a Foster Grandparent showed marked improvement in their areas of delay

Forty-eight hours of annual in-service was provided to each Foster Grandparent enrolled in the program
Twenty-three Foster Grandparents attended the annual Arkansas Foster Grandparent Program's three-day training conference at Little Rock in June, 2018

Fifty Foster Grandparents and three staff made 54 blankets and delivered them to Cancer Centers throughout Arkansas for Martin Luther King Day

Forty-six Foster Grandparents read to 1213 students during the 9-11 Project Read to acknowledge the public service heroes in our communities

We had four mayors in our service area that participated in the National Day of Recognition for Volunteers on April 2, 2019. They decreed a proclamation for that day for their cities.

GUY FENTER EDUCATION SERVICE COOPERATIVE

Program: Gifted and Talented

Funding Source: Arkansas Department of Education

Competitive Grant: No

Restricted: Yes

Participating Districts:

Alma, Booneville, Cedarville, Charleston, Clarksville, County Line, Fort Smith, Greenwood, Hackett, Lamar, Lavaca, Magazine, Mansfield, Mountainburg, Mulberry/Pleasant View Bi-County, Ozark, Paris, Scranton, Van Buren, Waldron, Westside

Personnel:

Name	Position	Degree
Karen G	Gifted and Talented Specialist	MSE

Goal:

Assist member districts to meet the State's Standards for Gifted and Talented Education and Advanced Placement. Serve as a liaison with the ADE, Office of Gifted and Talented and Advanced Placement, parent and professional organizations, and other public and private agencies. Promote gifted education through public awareness and advocacy.

Program Summary:

Assisted schools through the monitoring of their GT programs, with the program application process and with policies needed to be in compliance. Hosted GT Coordinators' meetings for support and strategies to assist them in their local GT program. Provided student activities: Elementary Quiz Bowl (Grades 3-9), Chess Tournament (Grades 3-12), Theatre Squared "The Poe Show", online Quizlet competition (Grades 3-12), and online live Chess Tournaments (Grades 3-12). Provided professional development as needed throughout the year including: Teaching the Gifted in the Secondary Content, ADE Monitoring Preparation meeting, AP Coordinator Meeting, Pre-AP certification (via College Board), Novice I Differentiation, and Torrance Training.

Major Highlights of the Year:

Assisted GT coordinators in maintaining compliance during ADE on site monitoring

Served over 1, 100 students in various academic competitions

GT Specialist elected the AGATE Board as Membership Chair

GT Specialist attended professional development at AGATE, AAGEA, GCRL, and various meetings throughout the year.

Hosted virtual Quizlet competition during the fourth nine weeks of the school year.

Hosted virtual live Chess tournaments during the fourth nine weeks of the school year.

GUY FENTER EDUCATION SERVICE COOPERATIVE

GT \$50,000 Grant

- Torrance Test Training for 22 GT Teachers and 1 GT Specialist
- Curriculum options provided to 21 districts. Over 1800 students served.
- \$250 worth of consumables provided to 21 districts
- Rubik's Cubes purchased for all districts. Over 1500 students have been served.
- Over 250 students served with 3Doodler Create and Start classroom sets.
- Quiz Bowl buzzer sets purchased for 21 districts and 10 for use at Guy Fenter ESC. They have been used by over 800 students.
- Sixty Chess tournament sets were purchased and used for 3 days of Chess tournaments at Guy Fenter ESC. There were 380 students grades 3-12 who were served.
- 27 curriculum books purchased for check out by Guy Fenter ESC member districts
- Envision Gifted Curriculum 3-7 grade purchased for check out by Guy Fenter ESC member districts

GUY FENTER EDUCATION SERVICE COOPERATIVE

Program: Literacy

Funding Source: Arkansas Department of Education

Competitive Grant: No

Restricted: Yes

Participating Districts:

Alma, Booneville, Cedarville, Charleston, Clarksville, County Line, Fort Smith, Greenwood, Hackett, Lamar, Lavaca, Magazine, Mansfield, Mountainburg, Mulberry/Pleasant View Bi-County, Ozark, Paris, Scranton, Van Buren, Waldron, Westside

Personnel:

Name	Position	Degree
Chandra Brotherton	Literacy Specialist	MED +
Jeanna McKee	Literacy Specialist	MED
Jamie Siebenmorgen	Literacy Specialist	BSE
Caitlin Staton	Literacy Specialist	MSE

Goal:

- To enhance teacher awareness and implementation of current best practices through high quality professional development
- To meet the needs of students through integrated assessment and responsive instruction
- To ensure that all students are meeting the state and national standards in literacy

Program Summary:

Critical Reading is a professional development designed for teachers of Critical Reading or Strategic Reading in middle and secondary schools. It is comprised of four days with objectives focused on Engaging the Reader, Comprehension Strategies, Vocabulary Development, and Response to Text. Critical Reading provides training for teachers of students who are struggling readers needing extra support with Language Comprehension.

Dyslexia training provides an awareness of dyslexia and how teachers can recognize the characteristics of dyslexia. Teachers are trained in evidence-based strategies in order to support students who demonstrate these characteristics.

K-2 R.I.S.E. is a year-long learning professional development with sustained support in-districts. The training will provide educators with an in-depth knowledge related to the science of reading, evidence-based instructional strategies, and making data-based decisions for ALL students. Participants will attend 6 days of face-to-face training, with

GUY FENTER EDUCATION SERVICE COOPERATIVE

coaching support from literacy specialists throughout the year through observations and PLCs.

3-6 R.I.S.E. is a year-long learning professional development with sustained support in-districts. The training will provide educators with an in-depth knowledge related to the science of reading, evidence-based instructional strategies, and making data-based decisions for ALL students. Participants will attend 6 days of face-to-face training, with coaching support from literacy specialists throughout the year through observations and PLCs.

Science of Reading Stand Alone training-In order to meet proficiency through Pathway D and to reinforce training from RISE, the two additional science of reading days were provided in a school district as requested. Those days were Phonological Awareness and Content-Based Morphology.

Major Highlights of the Year:

The Literacy Department has supported schools in a variety of ways including:

- K-2 R.I.S.E. Training
- 3-6 R.I.S.E Training
- Science of Reading Stand Alone Training
- Literacy PD
- Dyslexia PD
- ACT Aspire PD
- Novice Teacher PD
- Team Meetings / Professional Learning Communities
- Assessment and Data Analysis
- Classroom Observations
- Lesson Planning Support
- Demonstration Lessons

The Literacy Specialists have also provided targeted professional development as needed at the request of individual districts.

GUY FENTER EDUCATION SERVICE COOPERATIVE

Program: Mathematics

Funding Source: Arkansas Department of Education

Competitive Grant: No

Restricted: Yes

Participating Districts:

Alma, Booneville, Cedarville, Charleston, Clarksville, County Line, Fort Smith, Greenwood, Hackett, Hartford, Lamar, Lavaca, Magazine, Mansfield, Mountainburg, Mulberry/Pleasant View Bi-County, Ozark, Paris, Scranton, Van Buren, Waldron, Westside

Personnel:

Name	Position	Degree
Tara Sanders	Mathematics Specialist	MED
Stephanie Whitman	Mathematics Specialist	MED

Goals:

- To support implementation of student-focused education and the preparation of all students for college and career readiness through professional development and state initiatives such as AR Math QuEST.
- To provide on-going training and on-site support to promote equity and engagement of all students in meaningful learning experiences of reasoning and problem solving.
- To provide professional development and classroom support to increase student achievement by increasing educator awareness and implementation of Standards for Mathematical Practice and Effective Teaching Practices.
- To assist teachers and administrators in locating resources pertinent to the teaching and learning of mathematics.

Program Summary:

The GFESC Math specialists are responsible for assisting local districts and teachers in improving the quality of mathematics education. The Math Specialists will provide quality training and on-site support. Professional Development offered during the 2019-2020 school year included: AR Math QuEST, AR Math Quest: Coaching Ambitious Teaching, Illustrative Mathematics Curriculum and Instruction Training, ACT Aspire: Collective Inquiry on Math Exemplars, Fundamentals of Early Number Sense Grades K-2, and Fundamentals of Fractions grades 3-5, Migrant Tutor Math Training, TI-84 Tips and Tricks. In addition, classroom observations, lesson planning support, model lessons, school site team meetings, PLC support, and school-based professional development and support linked to local school data were provided.

GUY FENTER EDUCATION SERVICE COOPERATIVE

Major Highlights of the Year:

- Implemented the state-initiated professional development AR Math QuEST. A total of 12 schools and 36 teachers participated in Cohort 1 of AR Math Quest. Besides summer professional development this initiative included individual embedded support in planning, carrying out, and reflecting on instruction throughout the school year.
- Provided Instructional Facilitator Coaching Training to help expand AR Math QuEST state initiative in our area. Facilitators gained knowledge about Math QuEST and effective *coaching* practices to use to support teachers in implementing effective *teaching* practices.
- Supported schools through classroom observations, lesson planning, curriculum alignment and pacing, Professional Learning Communities, novice teacher support and model lessons. Support was also provided in the use of different technologies with math, formative assessment, and effective teaching practices.
- The Mathematics Specialists have also provided targeted professional development and classroom support as needed at the request of individual districts.

GUY FENTER EDUCATION SERVICE COOPERATIVE

Program: Migrant Education Program (MEP)

Funding Source: Title I, Part C-Education of Migratory Children

Competitive Grant: No

Restricted: Yes

Participating Districts:

The Guy Fenter Migrant Education Program provides technical support to the following districts:

GFESC

Clarksville (Johnson Co.)

Fort Smith (Sebastian Co.)

Van Buren (Crawford Co.)

Waldron (Scott Co.)

AFESC

Clinton (Van Buren Co.)

Conway, Greenbrier, Mayflower, Vilonia (Faulkner Co.)

Danville, Dardanelle (Yell Co.)

Heber Springs (Cleburne Co.)

Russellville (Pope Co.)

Non Participating Districts

Migrant Program eligible students in the following districts are provided services by the Guy Fenter Migrant Education Program staff.

GFESC

Mountainburg, Cedarville, Alma, Mulberry/Pleasant View (Crawford Co.)

Hackett, Mansfield, Greenwood, (Sebastian Co.)

Booneville, Magazine, Scranton, Paris, (Logan)

Charleston, County Line, Ozark, (Franklin)

Lamar, (Johnson)

AFESC

Western Yell, Two Rivers, (Yell)

Perryville, East End, Bigelow (Perry)

Pottsville, Atkins, Dover, Hector, (Pope)

Guy Perkins, (Faulkner)

GUY FENTER EDUCATION SERVICE COOPERATIVE

Quitman, West Side Greers Ferry, (Clebourn)
Wonderview, Nemo Vista, South Conway, (Conway Co.)
Shirley, (Van Buren)

Personnel:

Name	Position	Degree
Sheila Peck	Migrant Education Specialist	MED
Ashley Hulan	Recruitment Eligibility Data Specialist	BS
Joshua Vest	Recruiter/Advocate	MED
Rey Flores	Recruiter/Advocate	HSD
Marisol Beltran	Recruiter/Advocate	BS

Goals:

The Migrant Education Program is to identify all eligible migratory children and to provide supplemental services to improve educational opportunities for migratory children to help them succeed in the regular school program, meet the same state academic content and student academic achievement standards that all children are expected to meet, and graduate from high schools. Our measurable program goals address reading achievement, math achievement, and high school graduation.

Program Summary:

During the 2019-2020 school year, almost 1,000 children and youth ages three through twenty- one were recruited and/or served in the Guy Fenter Education Service Cooperative by the Migrant Education Program.

Technical Assistance is provided by MEP staff in the thirteen (13) project schools. Services in non-project schools are provided by MEP cooperative staff.

Services provided include:

- Identification and Recruitment
- Advocacy for MEP families
- Providing parents with information to help their children to be prepared for kindergarten, with literacy and math, and to support their children to graduate from high school and prepare for college or a career
- In home Pre-K Lessons for 3-5 year old MEP children not enrolled in a preschool
- Tutoring/Mentoring students during the regular school term
- Supplying students with supplemental books and magazines to read for pleasure

GUY FENTER EDUCATION SERVICE COOPERATIVE

- Access to MYON - an online literacy program with technologic devices provided
- Availability of free Red Comet online credit recovery courses
- ExCEL Challenge - AMESLA - 4-H Center Ferndale, AR
- High School students to visit colleges and explore post-secondary opportunities
- Provide students with transportation to MEP sponsored activities
- Provide MEP staff with professional development (math, literacy, ID&R)
- Provide student STEM activity days
- School supplies for new enrollments, and upon request
- Virtual Job Shadowing (summer and ongoing)
- Virtual Leadership Week (coordination of Alaska, Arkansas, Pennsylvania, Iowa, Nebraska)
- STRIDE (online math and literacy tutoring)

GUY FENTER EDUCATION SERVICE COOPERATIVE

Program: Novice Teacher Mentoring Program

Funding Source: Arkansas Department of Education

Competitive Grant: No

Restricted: Yes

Participating Districts:

Alma, Booneville, Cedarville, Charleston, Clarksville, County Line, Fort Smith, Future School of FS, Greenwood, Hackett, Lamar, Lavaca, Magazine, Mansfield, Mountainburg, Mulberry/Pleasant View, Ozark, Paris, Scranton, Van Buren, Waldron, Westside

Personnel:

Name	Position	Degree
Pam Terry-Smith	Recruitment/Retention Specialist (1/2 time)	MED +
Tammy Brewer	Recruitment/Retention Specialist	MED +
Angela Miller	Teacher Center Coordinator	MED +

Goal:

To provide all Novice Teachers with the foundational information and support to enable Novice Teachers to be an effective first year teacher, to grow and develop as a second year teacher, and to empower a third year teacher to be a teacher leader. Our goal is to provide instruction and support during the formative years of a novice teachers career.

Program Summary:

All Novice Teachers are assigned to a cohort led by the Recruitment and Retention Specialists who have expertise in the content area or pedagogy area of the Novice Teacher. Novice Teachers are invited to connect to a digital platform for the sharing of resources and/or information and discussion. First year Novice Teachers attended five days of face to face professional learning at the cooperative. Second year Novice Teachers attended three days of face to face professional learning at the cooperative. The professional learning topics included: Classroom Management, Growth Mindset, Behavior Support, Lesson Planning, Ethics/Professionalism, Special Education Law, Dyslexia and Science of Reading Overview, TESS, Bloomboard/EdReflect training, and other needs requested by the Novice Teachers.

The Recruitment and Retention Specialists worked in member districts to support Novice Teachers through on-site coaching, modeling, observation/reflection, lesson planning, etc. The Novice Teachers also received coaching and/or support from the GFESC Content Specialists through PLCs and on-site coaching.

GUY FENTER EDUCATION SERVICE COOPERATIVE

Major Highlights of the Year:

450 Novice Teachers were supported through the GFESC Novice Teacher Mentoring Program. On-site visits provided necessary assistance on an individualized basis and all requests for support were provided.

GUY FENTER EDUCATION SERVICE COOPERATIVE

Program: School Health Services

Funding Source: Arkansas Department of Health

Competitive Grant: No

Restricted: No

Participating Districts: Alma, Booneville, Cedarville, Charleston, Clarksville, County Line, Fort Smith, Greenwood, Hackett, Hartford, Lamar, Lavaca, Magazine, Mansfield, Mountainburg, Mulberry/Pleasant View Bi-County, Ozark, Paris, Scranton, Van Buren, Waldron, Westside

Charter Schools: Future School of Fort Smith

Private Schools: Subiaco Academy, Immaculate Conception, Trinity Jr. High, Union Christian Academy...

Personnel:

Name	Position	Degree
Miranda Curbow	Community Health Nurse Specialist	RN

Goal:

Train school nurses to do all mandated screenings. Provide TA to school nurses on all issues that have to do with their jobs and school health. Assist all school wellness committees as requested. Provide TA to districts in the completion of SHI, and development of School Wellness Plans. Provide TA to CSH schools as well as wellness centers. Provide training to faculty, staff and administration on all health related subjects and provide TA with physical fitness, nutrition, injury prevention, etc. Educate students in the classrooms on relevant health and safety related topics as requested by the district. Assist community health coalitions and other community organizations to educate the public on public health issues as requested. Provide legislative updates and training to school nurses in relation to the new laws enacted. Assist districts who are applying for a School Based Health Center, such as, giving TA to provider and district and TA to grant writer.

Program Summary:

Provided multiple workshops for hearing, vision, scoliosis and BMI. Also provided training on Para-professionals train the trainer for school nurses, as well as multiple trainings for the medical module required for para professionals. Other pertinent trainings were provided in conjunction with local LEA's, Co-op behavior specialist and ADE staff, in order to meet the requirements, set forth for para professional certifications.

In accordance to law, training provided to all district RN's in order for them to provide appropriate staff trainings for insulin and glucagon administration. This training was

GUY FENTER EDUCATION SERVICE COOPERATIVE

offered multiple times and followed the law and rules and regulations set forth by the Arkansas State Board of Nursing.

CHNS trained CPR to anyone in districts as requested. Required BLS/CPR training for school nurses was also provided. In addition, trained students were trained in hands only CPR and some were certified in CPR and first aid as requested. This resulted in over 30 CPR courses being taught over the past fiscal year. Staff were also trained in rules and regulations for providing CPR to all seniors prior to graduation.

Other topics of training provided to staff included, but weren't limited to: Mental Health First Aid in Adolescents, Suicide, SafeTalk, Concussion and education services, Behaviors and what to do to help, Medications and their effects on students and learning, Adverse Childhood Experiences, Mandated Reporter, Emerging Drug Trends, Tobacco updates, Stop the Bleed, and others.

Provided TA to multiple districts in regards to the SHI completion, Indistar and the subsequent implementation of their improvement plans. Provided education to wellness committees concerning roles and responsibilities and district wellness plans.

Served as a liaison between districts and the local health dept. units in regards to immunizations, including flu clinics. Attended and assisted with multiple district and community flu clinics. Provided guidance and TA to districts following several communicable disease outbreaks. Assisted with follow up on the outbreaks within districts.

Educated multiple classrooms in several districts on topics that included, but were not limited to: STD's, teen pregnancy, puberty, shaken baby syndrome, tobacco risks, Chronic disease, flu, immunizations, fire safety, poison control and the increase in death and poisoning due to prescription drug use.

Additionally, educated student, staff and community members on obesity, physical activity, substance abuse, physical fitness, bullying, CPR, suicide prevention, etc....

Provided TA to multiple school districts and community organizations for the purpose of securing grant funding throughout the year.

Partnered with multiple counties to provide opioid education and awareness trainings in conjunction with Department of Criminal Justice. These were coordinated and paid for through grant funding.

Assisted several communities in providing Farmers Markets that included health, nutrition and safety education, promoted physical activity and encouraged community involvement.

Educated communities and school districts on ARCOP and Growing Healthy Communities initiative. Provided TA for application for these designations to several entities. TA given to communities to secure grant funding for shade structures.

GUY FENTER EDUCATION SERVICE COOPERATIVE

Assisted UAEX, Partners for Inclusive Communities and City of Charleston with accessibility assessment of all 3 Charleston parks. Recommendations made and TA provided to city of Charleston to begin 5 phase process of making all city parks accessible to everyone.

Major Highlights of the Year:

Annual Fall School Nurse Workshop

Multiple speakers were brought in to present relevant information for the upcoming school year.

This included state level updates and education from multiple agencies.

Vendors and exhibitors were also present to share information and resources.

Nurses received 5 CE's for the day

Worked with CHNS/CHPS statewide to provide New School Nurse Workshop opportunity. This workshop lasted 2 days and provided CNE's, as well as, pertinent information to assist the school nurse complete requirements and properly care for students and staff.

Assisted Prevention Task Force with area wide workshop and opioid awareness training.

Assisted Arkansas Children's Hospital to provide a week long residency program for school nurses from across the state of Arkansas. Hands on training, classroom education, and certifications were all included. Provided facilitation and oversight.

Provided Training and TA to multiple schools on Para-Professional Skills which assists schools in billing for personal care hours

Provided multiple events offering nursing CE's for school and other nurses. Over 20 CE's were available for nurses to receive through co-op training. Each RN must attend a minimum of 15 CNE hours to renew their license.

Educated superintendents on multiple changes of student and staff health requirements.

Educated school nurses regarding medication administration and laws on medication delegation in the schools.

Provided School Health Index Training to schools along with training to school wellness committees on their role in the district and best practices to implement.

GUY FENTER EDUCATION SERVICE COOPERATIVE

Provided information to districts regarding the school wellness policy for their district, including the monitoring process and how they can succeed in implementation of the policy.

Provided TA to schools writing for CSH wellness center grants. Assisted local district with SBHC grant review process.

Provided TA to schools to assist with completing nursing survey, acuity survey, and ESCHOOL education to nurses.

Provided TA to schools in implementing comprehensive tobacco policies. Educated students on E-cigarette dangers. Provided multiple JUUL trainings to students, staff and parents. Assisted districts and communities with policy making that would include JUULing.

Provide all Co-op districts with the mandated CPR trainings for their staff as requested, as well, Provided First Aid as required and requested.

Provided Stop the Bleed training in multiple districts for staff, students and parents. Assisted several districts in securing grants for Stop the Bleed kits.

Provided TA to multiple districts in grant writing and initiation of grants in their districts.

Assisted ADE in JUA grant reviews.

Continue to provide TA to schools on legal and ethical issues that are related to medical needs in the classroom and during school related events.

Assisted in covering for Arch Ford Cooperative during a vacancy in their CHNS position and provided training for the new CHNS once she was hired.

Assisted Charleston Public Schools and CSI tobacco grantee in development of youth peer program, PPYC. The group did peer training and education for elementary school students. Spoke to city council on behalf of T21, Tobacco Free Charleston and Tobacco Free Parks, etc...

Provided TA to multiple districts regarding suicide awareness, postvention and prevention.

GUY FENTER EDUCATION SERVICE COOPERATIVE

Program: Science

Funding Source: Arkansas Department of Education

Competitive Grant: No

Restricted: Yes

Participating Districts:

Alma, Clarksville, Booneville, Cedarville, Charleston, County Line, Fort Smith, Greenwood, Hackett, Lamar, Lavaca, Magazine, Mansfield, Mountainburg, Mulberry, Ozark, Paris, Scranton, Van Buren, Waldron, Westside

Personnel:

Name	Position	Degree
Amber Cobb	Science Specialist	MSE
Curtis Varnell	Science Specialist	MED +

Goals:

The overarching goal for science in the GFESC area is to increase content knowledge and pedagogy of area teachers. The science specialist will serve as a liaison in science education between local school districts and the A.D.E. An integral function of duties will be to assist teachers in conducting student centered instruction, increasing learning through laboratory and science investigations, and use of correct safety skills. The science specialist will accomplish this through the development and delivery of quality Professional Development in science and interdisciplinary studies. Progress in stated goals will be assessed through increased student scores on state and national exams as well as through teacher workshop evaluations.

Program Summary:

The ADE Science Specialist is responsible for assisting local districts and teachers in improving the quality of science education throughout the region. The science specialist will provide training in inquiry-based science, model teaching, curriculum development and alignment, and techniques to prepare for science teaching.

Major Highlights of the Year:

- Specialist has worked with ADE to provide extensive training in the development and implementation of Grasping Phenomenal Science.
- Specialist has worked extensively with all districts within the region in the implementation of Next Generation Science Standards (NGSS).
- The Elementary STEM science competition were developed, sponsored, and conducted by GFESC science specialist with more than 400 student participants and 200 adults.
- Specialists presented teacher workshops at state and local workshops.

GUY FENTER EDUCATION SERVICE COOPERATIVE

- Specialist has developed and implemented an extensive program in Outdoor Education for kids at risk and for English second language students.
- Interactive technology was made available to science teachers throughout the region with specialized training in the use of various instructional tools.
- Conducted more than twenty days of outdoor classroom field trips with area schools including Paris, Waldron, Fort Smith, County Line, Scranton, and Cedarville.
- A repository of technology used in science was established at GFESC
- On-going collaborative efforts between the University of the Ozarks, UAFS, and GFESC to affect positive improvement in science education.
- Worked with local Boys and Girls Clubs and libraries to provide educational opportunities to community members and students.
- Provided STAR-LAB and Space Adventure astronomy program to students during the current school year.
- \Specialist collaborated with PBS in developing AMI activities during the COVID-19 pandemic
- Specialist created weekly lessons and provided support via Zoom, Facebook, text messages, phone conferences, and email during the COVID-19 pandemic

GUY FENTER EDUCATION SERVICE COOPERATIVE

Program: Teacher Center (Professional Development; Curriculum Development Assistance; Resources)

Funding Source: Base

Competitive Grant: No

Restricted: Yes

Participating Districts:

Alma, Booneville, Cedarville, Charleston, Clarksville, County Line, Fort Smith, Greenwood, Hackett, Lamar, Lavaca, Magazine, Mansfield, Mountainburg, Mulberry/Pleasant View, Ozark, Paris, Scranton, Van Buren, Waldron, Westside

Personnel:

Name	Position	Degree
Angela Miller	Teacher Center Coordinator	MED +
Cristin Oberman	Administrative Assistant	HSD
Jill Upton	Administrative Assistant	HSD

Goal:

- To align professional development services with district and school needs to build capacity of all adult learners in order to provide a world class system which graduates students who are college and career ready.
- To provide adult learners with content knowledge and research-based instructional strategies to assist students in meeting rigorous academic standards and prepare adult learners to use various types of assessment results appropriately.
- To improve the learning of all students by providing resources to support adult learning and collaboration.
- To provide curriculum development assistance to schools.
- To support school improvement initiatives generated by the ADE and enhance program integration through effective communication and technical support.

Program Summary:

Professional development opportunities target the focus areas as outlined by the DESE and professional development sessions are offered to meet the requirements of law regarding the required PD, as well as meeting the needs of schools based upon needs assessment survey results, user satisfaction survey results, and other data from the 21 districts served. The Teacher Center Coordinator meets with the Teacher Center Committee multiple times per year and uses the data sets from the districts to plan PD to meet the needs of the districts. The Director, Teacher Center Coordinator, and Content Specialists meet with constituent groups monthly. From these meetings, information is

GUY FENTER EDUCATION SERVICE COOPERATIVE

collected to assist in designing professional growth opportunities for the leaders and teachers of our member districts.

Major Highlights of the Year:

GFESC is building capacity through: Superintendent, Building Principal/Assistant Principal, Federal Programs and Curriculum Coordinators monthly meetings, Dyslexia Intervention Support Services, High Reliability Schools Training/PD, Novice Teacher Mentoring Program, RISE Cohort Trainings, Grasping Phenomenal Science PD, Google Classroom, Open Up Resources/Illustrative Math, Foundations Grade-level Trainings, Eureka Math/IXL/Moby Max/CGI Trainings, Behavior Intervention Support/Training, Special Education Boot Camp, Leadership Quests for administrators, Superintendent's' Fall Conference, and on-site school-based professional development and/or coaching.

[GFESC Needs Assessment Survey](#)

[GFESC User Satisfaction Survey](#)

GUY FENTER EDUCATION SERVICE COOPERATIVE

Program: Technology

Funding Source: Arkansas Department of Education

Competitive Grant: No

Restricted: Yes

Participating Districts:

Alma, Booneville, Cedarville, Charleston, Clarksville, County Line, Fort Smith, Greenwood, Hackett, Lamar, Lavaca, Magazine, Mansfield, Mountainburg, Mulberry/Pleasant View, Ozark, Paris, Scranton, Van Buren, Waldron, Westside

Personnel:

Name	Position	Degree
Douglas Morton	Technology Coordinator	HSD

Goal:

The goals of the Technology Coordinator are to support all technology related workshops in the cooperative, to support non-technology workshops in use of technology for presentations, to assist schools with e-rate, technology plans, networking, security, communication needs and to assist the ADE with technology initiatives and professional development.

Program Summary:

The technology program has worked to promote all ADE initiatives involving technology and to support the educational specialists as well as other staff housed at the co-op in using technology effectively. Many of the member schools rely on the technology coordinator for assistance and evaluation of technology needs.

Major Highlights of the Year:

Promoted the changes needed to keep up with the technology needs at the districts
Assisted in providing training, support and vendor demos for Technology Coordinators
Assist with keeping web site up to date.
Maintained groups for area school administrators to increase communication with the cooperative and between the member schools.
Improved labs and facilities for participants attending sessions.
Improvements to the LAN for future growth.
Attended State Technology Coordinator Meetings to keep informed about emerging Technology for the K-12 environment.
Assisted in the evaluation and purchase of new equipment for our employees.

GUY FENTER EDUCATION SERVICE COOPERATIVE

Special Projects and Programs

Detailed below are special projects or programs in which state funding provided services regionally or statewide, give the Guy Fenter Education Service Cooperative an opportunity to participate.

Program Name: TESS

Goals and Description

The Framework for Teaching by Charlotte Danielson provides the foundation for the Arkansas Teacher Excellence Support System (TESS). TESS training was embedded into our Novice Mentoring Program for both Year 1 and Year 2 Novice Teachers. GFESC also offered TESS training through our Behavior Essentials Professional Development sessions that were offered to all educators in our member districts. Content Specialists work to connect professional development to TESS and support teachers and administrators as they continue to use TESS as the teacher evaluation system in the 2018-2019 school year. A TESS review and update training was provided for all administrators during a regularly scheduled Principals and Assistant Principals meeting in October.

Program Name: Arkansas Leadership Excellence and Development System (LEADS)

Goals and Description

The Interstate School Leaders Licensure Consortium (ISLLC) Standards provide the basis for the Arkansas evaluation and support system for the Arkansas evaluation and support system for all Arkansas administrators. The Guy Fenter Education Service Cooperative provided support for the implementation of LEADS as needed in cooperation with the AAEA Quest Regional Leaders through the Principal's Journeys hosted at GFESC and through the Beginning Administrator trainings session hosted at the cooperative.

Program Name: Math

Goals and Description

GFESC held trainings for AR Math Quest Cohort 1, Coaching Ambitious Teaching, Cognitively Guided Instruction (CGI), Open-Up Resources/Illustrative Math, ACT Aspire, Eureka Math, and on-site visits to all of the GFESC districts to provide support and assistance with mathematical curriculum, instruction, and mathematical practices.

GUY FENTER EDUCATION SERVICE COOPERATIVE

Program Name: Literacy

Goals and Description

R.I.S.E. Academy, SoR Assessor's Training, and SoR Days were held at GFESC throughout the 2019-2020 school year. The SoR Assessor's Training was held in the spring of 2020 and facilitated by DESE with support from GFESC literacy specialists. The Literacy Specialists made on-site visits to all of the GFESC districts to provide support and assistance with R.I.S.E. implementation, PLC data disaggregation, dyslexia services, and reading/writing curriculum. Workshops and trainings at the Coop included Empowering Writers, Sonday Systems 1 & 2, and Foundations.

Program Name: Science

Goals and Description

GFESC Science Specialists provided training both at the Coop and on-site in districts in Grasping Phenomenal Science, STEM instruction, Unit development, Lesson Writing, and Curriculum Alignment. Other trainings and professional development include STEM Olympiad, Exploring the Mulberry River, The Outdoor Classroom, Arkansas Game and Fish, and the STEM Program for grades K-2 in partnership with the University of the Ozarks.

Program Name: Other Content Areas

Goals and Description

Social Studies, Computer Science, Foreign Language, ESOL, Career and Technical Education, Physical Education, Health and Wellness, Art, Music, Drama, etc. were some of the other content areas addressed through professional development and on-site support in the GFESC districts.

Program Name: Leadership Quest

Goals and Description

GFESC held three professional development Leadership Quest sessions for building principals and assistant principals during the 2019-2020 school year. The Leadership Quests were facilitated and led by current practicing GFESC building level administrators.

Day 1 – Professional Standards for Educational Leaders transition to LEADS/EdReflect
Day 2 – HRS Level 1 – The Critical Condition: Collaborative Teams of the PLC
Day 3 – Inclusive Principal

GUY FENTER EDUCATION SERVICE COOPERATIVE

Program Name: School Board Training

Goals and Description

GFESC provided two training opportunities for area school board members.

- September 2019 – ASBA provided a three-hour training that covered a variety of topics including personnel-related issues, new laws, etc.
- November 2019 – APSRC provided a three-hour training that included the following topics: financial components, laws related to school boards, etc.

Program Name: Electronic Fingerprinting

Goals and Description

Arkansas State, FBI and Child Maltreatment Central registry background checks are required for student teaching internship, first time licensure and all licensure renewals, first employment or change of employment in public schools, charter schools or education service cooperatives. The Arkansas Department of Education deemed that that the Arkansas Education Cooperatives would perform all fingerprints needed.

GFESC has one Live Scan unit in the main office for scheduled appointments

GFESC performed a total of **856** electronic fingerprints from **July 1, 2019 - June 25, 2020**. GFESC has recently begun scheduling appointments for fingerprinting again as we were unable to fingerprint from March 16, 2020 – June 14, 2020. Currently, we have one employee trained to conduct fingerprints. This employee must work fingerprinting into their already full-time positions. (i.e. Purchasing and Inventory Administrative Assistant).

Program Name: ACT Aspire, WIST, and PAST

Goals and Description

The GFESC provided support to classroom teachers and instructional leaders to ensure that Arkansas content standards were taught in a manner that would prepare students for the ACT Aspire. In addition to ADE presenters, cooperative content specialists provided face to face trainings on ACT Aspire resources and their use in data disaggregation and strengthening the classroom teachers' understanding of assessment requirements for students. Trainings will continue during the summer of 2020 and the upcoming school year as needed.

GFESC Literacy Content Specialists also worked on-site in member districts to help administer the WIST (Word Identification Spelling Test), PAST (Phonological Awareness Skills Test), and the Decoding Survey. The Content Specialists worked with classroom teachers and instructional leaders on the data disaggregation piece related to the WIST, PAST, and Decoding Survey through PLC meetings and additional professional development/trainings as requested.

GUY FENTER EDUCATION SERVICE COOPERATIVE

All twenty-one districts and one charter school participated in the professional development offerings at GFESC during the 2019-2020 year. The Guy Fenter Education Service Cooperative and the Division of Elementary and Secondary Education work collaboratively to support and assist districts with state initiatives and mandates, especially those curriculum, instruction, and assessment. With the support of the Arkansas legislature, Division of Elementary and Secondary Education, other Education Service Cooperatives, and the local districts, GFESC educators have the resources and support to increase student achievement as outlined by the Every Student Succeeds Act (ESSA). The annual Needs Assessment and User Satisfaction Surveys are used to design and develop professional development for district needs, and to provide support for districts as they work through individual school improvement plans.

**GUY FENTER EDUCATION SERVICE
COOPERATIVE**

Professional Development Summary

Beginning: July 1, 2019
End: June 30, 2020

GUY FENTER EDUCATION SERVICE COOPERATIVE

Summary Registered

powered by
escWorks 

Printed Date: 6/26/2020

Last modified: 6/26/2020

Report Description:

Count of registered and attended participants grouped by session for a given time period or for a given owner.

Search Parameter: **Session Title:** GFESC
Start Date (>=): 2019-07-01-00-00-00
Less Than End Date: 2020-06-30-00-00-00
ESC Coop Event: on

Total Registered: **7941** Attended: **6923**

Session	Registered	Attended
GFESC - ARKANSAS CHORAL DIRECTORS ASSOCIATION - LIVESTREAM: CHORAL MUSIC PARADIGM SHIFTS IN A CHANGING WORLD		
374348 - Jul 1, 2019 9:00 am - 4:00 pm	11	10
GFESC - CPR FOR HEALTHCARE PROVIDERS		
381590 - Jul 1, 2019 9:00 am - 3:00 pm	11	11
GFESC - SERVING FAMILIES AND STUDENTS IN POVERTY		
379508 - Jul 8, 2019 9:00 am - 4:00 pm	25	23
GFESC - WEB TECHNOLOGIES IN-SERVICE		
388336 - Jul 9, 2019 9:00 am - 3:00 pm	6	6
GFESC - ACTIVE LEARNING STRATEGIES AND CLASSROOM MANAGEMENT FOR THE ELEMENTARY CLASSROOM		
372475 - Jul 10, 2019 9:00 am - 4:00 pm	26	18
GFESC - FOOD BID AWARDS		
375502 - Jul 10, 2019 10:00 am - 11:00 am	5	5
GFESC - DIFFERENTIATION MADE EASY IN THE ELEMENTARY CLASSROOM		
379521 - Jul 10, 2019 9:00 am - 4:00 pm	14	12
GFESC - YEAR 3 NOVICE TEACHER TRAINING - DAY 1 FOR K-6		
384309 - Jul 10, 2019 9:00 am - 3:30 pm	60	58
GFESC - ARKANSAS MUSIC EDUCATORS ASSOCIATION - LIVESTREAM: 'A DAY OF PLAY' FOR ELEMENTARY MUSIC EDUCATORS		
374767 - Jul 11, 2019 9:00 am - 4:00 pm	10	10
GFESC - GRASPING PHENOMENAL SCIENCE: INTRODUCTION FOR K-12 (PRE-AP CERTIFICATION)		
374869 - Jul 11, 2019 9:00 am - 3:30 pm	10	8
GFESC - SPECIAL HEALTHCARE NEEDS TOT		
381850 - Jul 11, 2019 8:30 am - 11:30 am	5	3
GFESC - INSULIN AND GLUCAGON, DIABETES CARE TOT		
381853 - Jul 11, 2019 12:00 pm - 3:30 pm	4	3
GFESC - DOK: IT'S NOT JUST ABOUT THE VERB		
372838 - Jul 12, 2019 9:00 am - 4:00 pm	13	8
GFESC - ARKANSAS LEARNING STANDARDS FOR SCHOOL LIBRARIES: A NEW BEGINNING		
381489 - Jul 12, 2019 9:00 am - 4:00 pm	24	21
GFESC - ARKANSAS FARM TO SCHOOL K-12 TOOL-KIT TRAINING		
383540 - Jul 12, 2019 8:30 am - 3:30 pm	26	20

GUY FENTER EDUCATION SERVICE COOPERATIVE

GFESC - YEAR 3 NOVICE TEACHER TRAINING - DAY 1 FOR 7-12

384316 - Jul 12, 2019 9:00 am - 3:30 pm	55	54
---	----	----

**GFESC - HIGH SCHOOL COMPUTER SCIENCE AND CERTIFICATION
PREPARATION**

370675 - Jul 15, 16, 17, 18, 19, 2019 9:00 am - 4:00 pm	8	6
---	---	---

GFESC - TIER I AND LEGISLATIVE UPDATES

371581 - Jul 15, 2019 9:00 am - 12:00 pm	84	74
--	----	----

Session	Registered	Attended
GFESC - CPR FOR HEALTHCARE PROVIDERS		
381597 - Jul 15, 2019 9:00 am - 3:00 pm	10	6
GFESC - G.P.S. Data		
389216 - Jul 15, 2019 9:00 am - 3:00 pm	6	6
GFESC - SCIENCE OF READING: AWARENESS, DAY 1		
371063 - Jul 16, 2019 9:00 am - 4:00 pm	12	7
GFESC - GAMING TO GAIN KNOWLEDGE		
372471 - Jul 17, 2019 9:00 am - 4:00 pm	13	12
GFESC - FORMATIVE ASSESSMENT: UNLOCKING THE POWER OF ASSESSMENT FOR LEARNING		
372845 - Jul 17, 2019 9:00 am - 4:00 pm	16	12
GFESC - YEAR 2 NOVICE TEACHER TRAINING - DAY 1 FOR K-6		
384259 - Jul 17, 2019 9:00 am - 3:30 pm	41	41
GFESC - ACT ASPIRE PORTAL UPDATES		
371562 - Jul 18, 2019 9:00 am - 12:00 pm	46	39
GFESC - ACT ASPIRE PORTAL UPDATES		
371565 - Jul 18, 2019 1:00 pm - 4:00 pm	15	9
GFESC - SOCIAL STUDIES IN THE REAL WORLD		
375695 - Jul 18, 2019 9:00 am - 3:30 pm	44	39
GFESC - TRANSITION TOOLKIT TRAINING		
377100 - Jul 18, 2019 9:00 am - 12:00 pm	12	8
GFESC - TRANSITION ASSESSMENTS: THE WHO, WHAT, WHEN, WHERE, WHY & HOW (ALSO INCLUDES INFORMATION ON THE SUMMARY OF PERFORMANCE)		
377105 - Jul 18, 2019 1:00 pm - 4:00 pm	14	9
GFESC - 504 AND SPECIAL EDUCATION LAW OVERVIEW		
373009 - Jul 19, 2019 12:30 pm - 3:30 pm	31	26
GFESC - EVIDENCE-BASED PRACTICES FOR SECONDARY STUDENTS IN SPECIAL EDUCATION		
378167 - Jul 19, 2019 9:00 am - 12:00 pm	14	10
GFESC - INTRODUCTION TO PERSON-CENTERED PLANNING		
378169 - Jul 19, 2019 1:00 pm - 4:00 pm	6	5
GFESC - INTEGRATING STEM INTO EVERY DAY SCIENCE INSTRUCTION		
379529 - Jul 19, 2019 9:00 am - 4:00 pm	10	6
GFESC - YEAR 2 NOVICE TEACHER TRAINING - DAY 2 FOR K-6		
384265 - Jul 19, 2019 9:00 am - 3:30 pm	42	40
GFESC - ARKANSAS K-8 LEAD TEACHER TRAINING AND STIPEND PROGRAM		
370677 - Jul 22, 23, 24, 25, 26, 2019 9:00 am - 4:00 pm	12	11
GFESC - SOCIAL STUDIES BEST PRACTICES		
374980 - Jul 22, 2019 9:00 am - 4:00 pm	16	12
GFESC - ACT ASPIRE: COLLECTIVE INQUIRY ON MATH EXEMPLARS		
375599 - Jul 22, 2019 9:00 am - 4:00 pm	27	26
GFESC - UNDERSTANDING YOUR ESSA SCHOOL INDEX SCORE		
380284 - Jul 22, 2019 9:00 am - 3:00 pm	32	30
GFESC - ESCHOOL SCHEDULING WORKDAY		
388539 - Jul 22, 2019 9:00 am - 3:00 pm	10	9
GFESC - G.P.S. DATA		
390895 - Jul 22, 2019 9:00 am - 3:00 pm	5	5
GFESC - SCIENCE OF READING: AWARENESS, DAY 2		
371069 - Jul 23, 2019 9:00 am - 4:00 pm	13	3

Session	Registered	Attended
GFESC -DAY 1: PRINCIPAL'S PROFESSIONAL LEARNING COMMUNITY - LEADERSHIP QUEST AT GFESC		
386151 - Jul 23, 2019 9:00 am - 3:00 pm	47	43
GFESC - HISTORY IN YOUR OWN BACKYARD		
373483 - Jul 24, 2019 8:30 am - 3:30 pm	17	11
GFESC - INTEGRATING STEM INTO THE SCIENCE CLASSROOM USING PICTURE PERFECT AND LITERATURE		
380659 - Jul 24, 2019 9:00 am - 3:00 pm	8	7
GFESC - YEAR 2 NOVICE TEACHER TRAINING - DAY 1 FOR 7-12		
384269 - Jul 24, 2019 9:00 am - 3:30 pm	48	42
GFESC - ESCHOOL SCHEDULING WORKDAY		
388543 - Jul 24, 2019 9:00 am - 3:00 pm	7	6
GFESC - ACT WORKKEYS/CRC		
390043 - Jul 24, 2019 9:00 am - 3:00 pm	11	11
GFESC - ACT ASPIRE READING ASSESSMENT ANALYSIS		
372747 - Jul 25, 2019 9:00 am - 4:00 pm	36	33
GFESC - ARKANSAS GAME AND FISH COMMISSION - FISHING IN THE NATURAL STATE		
374829 - Jul 25, 2019 8:30 am - 3:30 pm	25	20
GFESC - YEAR 2 NOVICE TEACHER TRAINING - DAY 2 FOR 7-12		
384271 - Jul 25, 2019 9:00 am - 3:30 pm	49	44
GFESC - GMETRIX BOOTCAMP		
390038 - Jul 25, 2019 9:00 am - 3:00 pm	7	7
GFESC - BOOK TALKS! BOOK TALKS! BOOK TALKS!		
373504 - Jul 26, 2019 12:30 pm - 3:30 pm	19	16
GFESC - YEAR 1 NOVICE TEACHER TRAINING - DAY 1 FOR K-6		
383727 - Jul 26, 2019 9:00 am - 3:30 pm	59	56
GFESC - CPI TRAINING - INITIAL CERTIFICATION		
391608 - Jul 26, 2019 8:30 am - 3:30 pm	4	4
GFESC - INTERPRETING DATA IN SOCIAL STUDIES		
372214 - Jul 29, 2019 9:00 am - 4:00 pm	12	9
GFESC - YEAR 1 NOVICE TEACHER TRAINING - DAY 2 FOR K-6		
383733 - Jul 29, 2019 9:00 am - 3:30 pm	57	52
GFESC - ESCHOOL REGISTRATION FOR NEW EMPLOYEES		
388548 - Jul 29, 2019 9:00 am - 3:00 pm	11	11
GFESC - ACT ASPIRE WRITING ASSESSMENT ANALYSIS		
372753 - Jul 30, 2019 9:00 am - 4:00 pm	20	18
GFESC - OPEN UP RESOURCES/ILLUSTRATIVE MATHEMATICS - MATH, GRADE 6 - ALGEBRA 2 CURRICULUM AND INSTRUCTION TRAINING YEAR 1		
375040 - Jul 30, 31, 2019 9:00 am - 4:00 pm	15	15
GFESC - STRENGTHENING THE PLC PROCESS THROUGH ASSESSMENT FOR LEARNING		
375846 - Jul 30, 2019 9:00 am - 4:00 pm	8	5
GFESC - SAFETY AND WELLNESS IN THE SCHOOL: STOP THE BLEED, DOSE OF REALITY (RX DRUGS UPDATES), VAPING AND USE OF "LEGAL BUT DANGEROUS" SUBSTANCES UPDATES		
381830 - Jul 31, 2019 9:00 am - 12:00 pm	8	6
GFESC - PRE-AP ELA: TEXTS TAKE CENTER STAGE		
381835 - Jul 31, 2019 9:00 am - 4:00 pm	16	13
GFESC - YEAR 1 NOVICE TEACHER TRAINING - DAY 1 FOR 7-12		
383741 - Jul 31, 2019 9:00 am - 4:00 pm	47	44

Session	Registered	Attended
GFESC - INTO THE OUTDOORS		
372860 - Aug 1, 2019 8:00 am - 3:00 pm	23	16
GFESC - PRE-AP MATH: DEVELOPING MATHEMATICAL MINDSETS THROUGH A LEARNER-CENTERED CLASSROOM		
381837 - Aug 1, 2019 9:00 am - 4:00 pm	26	24
GFESC - YEAR 1 NOVICE TEACHER TRAINING - DAY 2 FOR 7-12		
383752 - Aug 1, 2019 9:00 am - 4:00 pm	42	40
GFESC - FOREIGN LANGUAGE WORKSHOP		
380196 - Aug 2, 2019 9:00 am - 4:00 pm	6	6
GFESC - ESCHOOL REGISTRATION REFRESHER		
388578 - Aug 2, 2019 9:00 am - 3:00 pm	15	12
GFESC - CPI TRAINING - RECERTIFICATION		
391612 - Aug 2, 2019 8:30 am - 12:30 pm	10	10
GFESC - AP COORDINATOR WORKSHOP		
386366 - Aug 5, 2019 8:00 am - 11:00 am	3	3
GFESC - DR. JOE SANFELIPPO (FOR ALL EDUCATORS)		
373551 - Aug 6, 2019 9:30 am - 11:00 am	588	555
GFESC - DR. JOE SANFELIPPO (FOR ALL BUILDING AND DISTRICT ADMINISTRATORS)		
373559 - Aug 6, 2019 11:00 am - 12:30 pm	56	42
GFESC - BACK TO SCHOOL NURSE WORKSHOP: YOU WANT ME TO DO WHAT?! AND WHY?!?!?		
380352 - Aug 6, 2019 8:30 am - 3:30 pm	75	72
GFESC - CTE MEETING		
394933 - Aug 7, 2019 4:30 pm - 5:30 pm	23	23
GFESC - ASSISTIVE TECHNOLOGY FOR SLP'S		
381403 - Aug 8, 2019 9:00 am - 12:00 pm	10	10
GFESC - FEEDING AND SWALLOWING IN THE SCHOOLS		
381452 - Aug 8, 2019 1:00 pm - 4:00 pm	10	10
GFESC - ESCHOOL ATTENDANCE FOR NEW EMPLOYEES		
388580 - Aug 8, 2019 9:00 am - 3:00 pm	15	13
GFESC - SERVING FAMILIES AND STUDENTS IN POVERTY		
388451 - Aug 9, 2019 9:00 am - 4:00 pm	22	21
GFESC - CYLE 1 OVERVIEW AND CYCLE 9 WORKDAY		
388455 - Aug 9, 2019 9:30 am - 3:00 pm	11	11
GFESC - ESCHOOL ATTENDANCE REFRESHER		
388582 - Aug 9, 2019 9:00 am - 3:00 pm	8	6
GFESC - CPR AND FIRST AID		
385190 - Aug 13, 2019 9:00 am - 3:00 pm	1	1
GFESC - ESCHOOL MEDICAL TRAINING		
388907 - Aug 15, 2019 9:00 am - 3:00 pm	5	4
GFESC - SUPERINTENDENT'S MEETING		
390993 - Aug 16, 2019 11:00 am - 3:00 pm	42	42
GFESC - FEDERAL PROGRAMS/CURRICULUM COORDINATORS' MEETING		
387160 - Aug 20, 2019 9:00 am - 12:00 pm	25	23
GFESC - YEAR 1 NOVICE TEACHERS MAKEUP FOR DAY 1- GRADES K-6		
388699 - Aug 21, 2019 9:00 am - 3:30 pm	31	30
GFESC - YEAR 1 NOVICE TEACHERS MAKEUP FOR DAY 1 - GRADES 7-12		
388704 - Aug 21, 2019 9:00 am - 3:30 pm	22	21
GFESC - ESCHOOL BEHAVIOR-DISCIPLINE TRAINING		
388909 - Aug 21, 2019 9:00 am - 12:00 pm	17	15

Session	Registered	Attended
GFESC - PARA PROFESSIONAL: PERSONAL CARE TRAINING (ONE TIME ATTENDANCE REQUIRED FOR PARAS PROVIDING PERSONAL CARE)		
385005 - Aug 22, 2019 9:30 am - 3:30 pm	22	18
GFESC - YEAR 1 NOVICE TEACHERS MAKEUP FOR DAY 2 - GRADES K-6		
388701 - Aug 22, 2019 9:00 am - 3:30 pm	31	30
GFESC - YEAR 1 NOVICE TEACHERS MAKEUP FOR DAY 2 - GRADES 7-12		
388707 - Aug 22, 2019 9:00 am - 3:30 pm	24	23
GFESC - STATEWIDE GT COORDINATOR MEETING WITH ADE		
388843 - Aug 23, 2019 9:00 am - 3:30 pm	20	19
GFESC - ID&R GFMEP		
391571 - Aug 26, 27, 2019 9:00 am - 3:30 pm	42	34
GFESC - MENTOR TEACHER TRAINING - DAY 1 FOR K-12		
384345 - Aug 27, 2019 9:00 am - 3:30 pm	70	69
GFESC - AP CHANGES: IMPLICATIONS FOR ARKANSAS		
386369 - Aug 27, 2019 8:00 am - 11:00 am	18	16
GFESC - YEAR 2 NOVICE TEACHERS MAKEUP FOR DAY 1 - GRADES K-6		
388778 - Aug 28, 2019 9:00 am - 3:30 pm	8	7
GFESC - YEAR 2 NOVICE TEACHERS MAKEUP DAY 1 - GRADES 7-12		
388785 - Aug 28, 2019 9:00 am - 3:30 pm	30	28
GFESC - SPECIAL HEALTH CARE NEEDS TRAINING FOR PARAS'		
387889 - Aug 29, 2019 9:00 am - 3:00 pm	8	5
GFESC - YEAR 2 NOVICE TEACHERS MAKEUP FOR DAY 2 - GRADES K-6		
388781 - Aug 29, 2019 9:00 am - 3:30 pm	9	7
GFESC - YEAR 2 NOVICE TEACHERS MAKEUP DAY 2 - GRADES 7-12		
388787 - Aug 29, 2019 9:00 am - 3:30 pm	29	27
GFESC - DISTRICT BOOKKEEPERS' WORKDAY		
392162 - Aug 29, 2019 9:00 am - 3:30 pm	4	4
GFESC - UAFS INTERNS		
393566 - Aug 30, 2019 9:00 am - 4:00 pm	28	28
GFESC - AR MATH QUEST: INTRODUCTION TO AMBITIOUS TEACHING (MATH INSTRUCTIONAL FACILITATORS ONLY)		
386424 - Sep 3, 4, 2019 9:00 am - 4:00 pm	12	10
GFESC - ELEMENTARY QUIZ BOWL COACHES' MEETING		
389028 - Sep 6, 2019 9:00 am - 12:00 pm	17	17
GFESC - AGQBA QUIZ BOWL COACHES' MEETING		
389030 - Sep 6, 2019 1:00 pm - 3:00 pm	21	19
GFESC - STEP INTO THE RIVER, NOT THE PUDDLE		
391700 - Sep 6, 2019 9:00 am - 3:30 pm	36	35
GFESC - ESCHOOL PROGRESS AND REPORT CARD TRAINING		
388911 - Sep 9, 2019 9:00 am - 3:00 pm	20	19
GFESC - YEAR 1 NOVICE TEACHER TRAINING - DAY 3 FOR K-6		
383747 - Sep 10, 2019 9:00 am - 3:30 pm	87	86
GFESC - ARKANSAS' DISTRICT MILITARY EDUCATION COORDINATORS: TRAINED AND READY!		
388459 - Sep 10, 2019 10:00 am - 12:00 pm	11	9
GFESC - ESOL COORDINATORS' MEETING		
380287 - Sep 11, 2019 8:30 am - 11:30 am	16	15
GFESC - YEAR 1 NOVICE TEACHER TRAINING - DAY 3 FOR 7-12		
384231 - Sep 12, 2019 9:00 am - 3:30 pm	70	66
GFESC - GT COORDINATOR PROGRAM APP WORKDAY		
393070 - Sep 13, 2019 9:00 am - 2:00 pm	8	8

Session	Registered	Attended
GFESC - SMS REQUIRED FIELDS FOR CYCLE REPORTING		
388915 - Sep 16, 2019 9:00 am - 12:00 pm	35	32
GFESC - GRADES 2-4 STEM OLYMPIAD INFORMATIONAL MEETING		
392665 - Sep 16, 2019 9:00 am - 4:00 pm	24	23
GFESC - CPI TRAINING - INITIAL CERTIFICATION		
394463 - Sep 16, 2019 9:00 am - 4:00 pm	7	7
GFESC - BUSINESS ED INSERVICE		
394911 - Sep 16, 2019 4:30 pm - 8:30 pm	18	18
GFESC - ALTERNATE PATHWAY TO GRADUATION		
382165 - Sep 17, 2019 9:00 am - 4:00 pm	18	16
GFESC - YEAR 2 NOVICE TEACHER TRAINING - DAY 3 FOR K-6		
384283 - Sep 17, 2019 9:00 am - 3:30 pm	47	47
GFESC - VISION SCREENING CERTIFICATION FOR SCHOOL NURSES		
385416 - Sep 17, 2019 9:00 am - 12:30 pm	8	7
GFESC - HEARING SCREENING CERTIFICATION FOR SCHOOL NURSES		
385432 - Sep 17, 2019 1:00 pm - 4:00 pm	8	7
GFESC - DISTRICT BOOKKEEPERS' WORKDAY		
392165 - Sep 17, 2019 9:00 am - 3:30 pm	6	3
GFESC - ACT ASPIRE PORTAL WORKSHOP		
394516 - Sep 17, 2019 9:00 am - 12:00 pm	36	36
GFESC - K-2 RISE DAY 3 MAKEUP		
394839 - Sep 17, 2019 8:30 am - 3:30 pm	7	7
GFESC - YEAR 2 NOVICE TEACHER TRAINING - DAY 3 FOR 7-12		
384288 - Sep 19, 2019 9:00 am - 3:30 pm	73	69
GFESC - DAY 2: ELEMENTARY PRINCIPAL'S PROFESSIONAL LEARNING COMMUNITY - LEADERSHIP QUEST AT GFESC		
386170 - Sep 19, 2019 9:30 am - 2:00 pm	23	23
GFESC - SUPERINTENDENT'S MEETING		
392337 - Sep 20, 2019 9:30 am - 2:00 pm	25	25
GFESC - DYSLEXIA CONTACT MEETING		
393478 - Sep 20, 2019 9:00 am - 12:00 pm	44	41
GFESC - F.A.C.S. INSERVICE		
394909 - Sep 23, 2019 4:30 pm - 8:30 pm	16	16
GFESC - YEAR 3 NOVICE TEACHER TRAINING - DAY 2 FOR K-6		
384320 - Sep 24, 2019 9:00 am - 3:30 pm	53	46
GFESC - HIGH RELIABILITY SCHOOLS LEVEL 2: TEACHING IN EVERY CLASSROOM WITH DR. MIKE RUYLE		
389182 - Sep 25, 2019 8:30 am - 3:30 pm	31	28
GFESC - CTE BUSINESS ED INSERVICE		
395204 - Sep 25, 2019 8:30 am - 2:30 pm	7	7
GFESC - YEAR 3 NOVICE TEACHER TRAINING - DAY 2 FOR 7-12		
384322 - Sep 26, 2019 9:00 am - 3:30 pm	48	44
GFESC - GT COORDINATOR PROGRAM APP WORKDAY		
393072 - Sep 26, 2019 9:00 am - 2:00 pm	5	5
GFESC - CYCLE 2 WORKDAY		
394800 - Sep 27, 2019 9:00 am - 3:00 pm	4	4
GFESC - TEACHING GIFTED IN THE SECONDARY		
392066 - Sep 30, 2019 9:00 am - 4:00 pm	14	13
GFESC - FALL SCHOOL BOARD TRAINING		
392365 - Sep 30, 2019 5:30 pm - 9:00 pm	57	50

Session	Registered	Attended
GFESC - CYCLE 2 WORKDAY		
394799 - Oct 2, 2019 9:00 am - 3:00 pm	7	5
GFESC - AG INSERVICE		
395602 - Oct 3, 2019 4:30 pm - 8:30 pm	17	17
GFESC - PUTTING PUBLIC ART TO WORK		
396585 - Oct 3, 2019 9:00 am - 4:00 pm	20	20
GFESC - K-2 RISE DAY 4 MAKEUP		
396159 - Oct 4, 2019 8:30 am - 3:30 pm	7	7
GFESC - CPI TRAINING - INITIAL CERTIFICATION		
396551 - Oct 8, 2019 9:00 am - 3:00 pm	5	5
GFESC - TEACHING GIFTED IN THE SECONDARY (PARIS SCHOOLS)		
395937 - Oct 14, 2019 10:00 am - 12:00 pm	17	17
GFESC Technology Coordinators Meeting		
395074 - Oct 15, 2019 9:00 am - 3:00 pm	17	15
GFESC - COHORT 3 K-2 RISE ACADEMY, DAY 5		
391986 - Oct 16, 2019 8:30 am - 3:30 pm	31	31
GFESC - OBESITY PREVENTION AND EDUCATION (BMI) SCREENING TRAINING FOR SCHOOL NURSES		
389657 - Oct 17, 2019 9:00 am - 11:30 am	9	7
GFESC - SCOLIOSIS SCREENING TRAINING FOR SCHOOL NURSES		
389665 - Oct 17, 2019 12:00 pm - 3:30 pm	8	6
GFESC - YEAR TWO STUDENT SUCCESS PLAN FOLLOW-UP TRAINING		
391948 - Oct 18, 2019 9:00 am - 4:00 pm	32	25
GFESC - TAKE A RIDE DOWN EASY STREET...DESIGNING INSTRUCTION DRIVEN BY DATA		
382326 - Oct 21, 2019 9:00 am - 2:00 pm	7	4
GFESC - CTE MEETING		
396543 - Oct 21, 2019 12:00 pm - 2:00 pm	10	10
GFESC - DAY 2: ELEMENTARY PRINCIPAL'S PROFESSIONAL LEARNING COMMUNITY - LEADERSHIP QUEST AT GFESC		
386169 - Oct 23, 2019 9:00 am - 2:00 pm	10	8
GFESC - SECONDARY COURSE CONTENT TRAINING FOR DIFFERENTIATION		
396333 - Oct 23, 2019 10:00 am - 12:00 pm	2	2
GFESC - SUPERINTENDENT'S FALL 2019 CONFERENCE		
396661 - Oct 23, 24, 25, 2019 4:00 pm - 11:15 am	21	21
GFESC - 2019 FALL SCHOOL COUNSELOR COLLABORATIVE MEETING		
381801 - Oct 24, 2019 9:00 am - 4:00 pm	65	59
GFESC - SECONDARY PRINCIPALS' MEETING		
386239 - Oct 24, 2019 9:30 am - 12:30 pm	23	23
GFESC - DATA BASE MAINTENANCE & HOT TOPICS IN EFINANCE		
395751 - Oct 25, 2019 9:30 am - 3:00 pm	14	13
GFESC - MENTOR TEACHER TRAINING - DAY 2 FOR K-12		
384346 - Oct 29, 2019 9:00 am - 3:30 pm	64	55
GFESC - FEDERAL PROGRAMS/CURRICULUM COORDINATORS' MEETING		
387162 - Oct 29, 2019 9:00 am - 12:00 pm	18	14
GFESC - SAFETY IN THE SCIENCE AND STEM LABS		
394791 - Oct 31, 2019 8:30 am - 3:30 pm	16	16
GFESC - COHORT 3 K-2 RISE ACADEMY, DAY 6		
391988 - Nov 1, 2019 8:30 am - 3:30 pm	30	28
GFESC - FALL SCHOOL BOARD TRAINING (2)		
392368 - Nov 4, 2019 5:30 pm - 9:00 pm	40	35

Session	Registered	Attended
GFESC - SERVING STUDENTS WITH MULTIPLE DISABILITIES AND DUAL SENSORY IMPAIRMENTS		
387459 - Nov 5, 2019 9:00 am - 4:00 pm	19	17
GFESC - ESCHOOL MEDICAL DATA ENTRY WORKDAY		
396316 - Nov 5, 2019 9:00 am - 3:00 pm	7	6
GFESC - FOOD BID AWARDS		
392502 - Nov 6, 2019 10:00 am - 12:00 pm	1	1
GFESC - BEHAVIOR ESSENTIALS: NECESSARY SKILLS TO EFFECTIVELY CHANGE BEHAVIOR		
395258 - Nov 6, 7, 8, 2019 9:00 am - 3:30 pm	14	14
GFESC - SCIENCE OF READING - PHONOLOGICAL AWARENESS		
397143 - Nov 6, 2019 8:00 am - 3:30 pm	25	25
GFESC - SCIENCE OF READING - PHONOLOGICAL AWARENESS		
397145 - Nov 7, 2019 8:00 am - 3:30 pm	20	20
GFESC - INDUSTRY TOURS		
397185 - Nov 8, 2019 8:15 am - 11:15 am	42	42
GFESC - REGIONAL ADVISORY COUNCIL MEETING		
397266 - Nov 8, 2019 12:45 pm - 3:30 pm	91	70
GFESC - YEAR 1 NOVICE TEACHER TRAINING - DAY 4 FOR K-6		
384235 - Nov 12, 2019 9:00 am - 3:30 pm	89	84
GFESC -ELEMENTARY PRINCIPALS' MEETING		
386172 - Nov 13, 2019 9:00 am - 12:00 pm	7	5
GFESC - ESCHOOL TRANSCRIPTS		
394923 - Nov 13, 2019 9:00 am - 12:00 pm	11	11
GFESC - DIFFERENTIATION IN SECONDARY CLASSROOM		
397251 - Nov 13, 2019 11:45 am - 12:45 pm	12	12
GFESC - YEAR 1 NOVICE TEACHER TRAINING - DAY 4 FOR 7-12		
384240 - Nov 14, 2019 9:00 am - 3:30 pm	65	63
GFESC - SECONDARY PRINCIPALS' MEETING		
393927 - Nov 14, 2019 9:30 am - 12:30 pm	17	17
GFESC - SUPERINTENDENTS' MEETING		
395228 - Nov 15, 2019 10:00 am - 3:00 pm	28	27
GFESC - ESOL COORDINATORS' MEETING		
380288 - Nov 18, 2019 8:30 am - 11:30 am	14	12
GFESC - GT COORDINATORS MEETING		
396687 - Nov 19, 2019 9:00 am - 3:30 pm	8	7
GFESC - AR MATH QUEST: AMBITIOUS TEACHING IMPLEMENTATION PHASE I		
386440 - Nov 20, 2019 9:00 am - 4:00 pm	42	42
GFESC - INTO THE OUTDOORS FOR SAT (STUDENTS ASSISTING TEACHERS)		
394797 - Nov 20, 2019 9:00 am - 2:00 pm	12	11
GFESC - ESCHOOL TRANSCRIPT WORKDAY		
394921 - Nov 20, 2019 9:00 am - 3:00 pm	3	2
GFESC - RAVE PANIC BUTTON/"EYEWITNESS" TRAINING		
396437 - Nov 21, 2019 10:00 am - 12:00 pm	15	13
GFESC-ELEMENTARY SCIENCE TEACHER BOOT CAMP DAY 1 OF 2		
394656 - Dec 2, 2019 9:00 am - 4:00 pm	9	8
GFESC-ELEMENTARY SCIENCE TEACHER BOOTCAMP-DAY 2 OF 2		
394670 - Dec 3, 2019 9:00 am - 4:00 pm	23	23
GFESC - FEDERAL PROGRAMS/CURRICULUM COORDINATORS' MEETING		
387163 - Dec 5, 2019 9:00 am - 12:00 pm	24	23

Session	Registered	Attended
GFESC - W2, 1099, AND CYE TRAINING		
396846 - Dec 5, 2019 9:30 am - 3:00 pm	23	21
GFESC - DYSLEXIA CONTACT MEETING		
397397 - Dec 6, 2019 9:00 am - 12:00 pm	39	37
GFESC - SECURITY AWARENESS WORKSHOP		
391027 - Dec 12, 2019 9:00 am - 3:00 pm	68	58
GFESC - AR MATH QUEST: COACHING AMBITIOUS TEACHING, DAY 1 (MATH INSTRUCTIONAL FACILITATORS ONLY)		
386445 - Dec 16, 2019 9:00 am - 4:00 pm	16	16
GFESC - MENTAL HEALTH FIRST AID FOR ADOLESCENTS		
395610 - Dec 18, 2019 8:00 am - 4:30 pm	14	10
GFESC- Technology Coordinators Meeting		
398326 - Dec 18, 2019 11:30 am - 2:00 pm	11	10
GFESC - SUPERINTENDENTS' MEETING		
395229 - Dec 19, 2019 10:00 am - 3:00 pm	25	25
GFESC - ASSESSMENT AND GRADING WITH TIM BROWN FROM SOLUTION TREE		
386659 - Jan 6, 2020 8:00 am - 11:30 am	337	322
GFESC - RESPONSE TO INTERVENTION (RTI) OVERVIEW		
395398 - Jan 7, 2020 8:30 am - 3:30 pm	27	24
GFESC-Work Sampling Introduction, Day 1		
398421 - Jan 9, 2020 9:00 am - 3:00 pm	1	1
GFESC - YEAR 1 NOVICE TEACHER TRAINING - DAY 5 FOR K-6		
384244 - Jan 14, 2020 9:00 am - 3:30 pm	88	82
GFESC - YEAR 1 NOVICE TEACHER TRAINING - DAY 5 FOR 7-12		
384247 - Jan 16, 2020 9:00 am - 3:30 pm	66	64
GFESC-Work Sampling Introduction, Day 2		
398447 - Jan 16, 2020 9:00 am - 3:00 pm	1	1
GFESC - Teacher Center Committee Meeting		
399596 - Jan 17, 2020 9:00 am - 11:00 am	16	14
GFESC - FEDERAL PROGRAMS/CURRICULUM COORDINATORS' MEETING		
387164 - Jan 21, 2020 9:00 am - 12:00 pm	25	21
GFESC - ELEMENTARY PRINCIPALS' MEETING		
386233 - Jan 22, 2020 9:00 am - 12:00 pm	11	0
GFESC - SECONDARY PRINCIPALS' MEETING		
386240 - Jan 23, 2020 9:30 am - 12:30 pm	18	18
GFESC-ACA (1095C) Processing & Work Day		
399632 - Jan 23, 2020 9:00 am - 4:00 pm	36	35
GFESC - SUPERINTENDENTS' MEETING		
395230 - Jan 24, 2020 10:00 am - 3:00 pm	19	19
GFESC-Due Process & SPED Conferencing Practices		
399932 - Jan 28, 2020 9:00 am - 4:00 pm	33	29
GFESC Ag Inservice		
401937 - Jan 31, 2020 9:00 am - 12:00 pm	12	12
GFESC - ELEMENTARY PRINCIPALS' MEETING		
386235 - Feb 5, 2020 9:00 am - 12:00 pm	11	10
GFESC-HAC Course Requests		
401080 - Feb 7, 2020 9:00 am - 12:00 pm	18	15
GFESC - ESOL COORDINATORS' MEETING		
380290 - Feb 10, 2020 8:30 am - 11:30 am	10	9

Session	Registered	Attended
GFESC - CROWNING ACHIEVEMENT...NEXT STEPS IN DEFINING SUCCESS USING ISTATION DATA		
382410 - Feb 11, 2020 9:00 am - 3:00 pm	18	14
GFESC - MENTOR TEACHER TRAINING - DAY 3 FOR K-12		
384348 - Feb 11, 2020 9:00 am - 3:30 pm	68	52
GFESC - SUPERINTENDENTS' MEETING		
395880 - Feb 11, 2020 10:00 am - 3:00 pm	3	1
GFESC - AR MATH QUEST: COACHING AMBITIOUS TEACHING, DAYS 2 & 3 (MATH INSTRUCTIONAL FACILITATORS ONLY)		
393852 - Feb 12, 13, 2020 9:00 am - 4:00 pm	13	10
GFESC-Data Driven Decision Making for IEPs		
399934 - Feb 12, 2020 10:00 am - 4:00 pm	36	33
GFESC - REGIONAL MENTAL HEALTH FORUM: SCHOOL NURSE AND SCHOOL COUNSELOR TEAM APPROACH		
397753 - Feb 13, 2020 8:30 am - 3:30 pm	88	70
GFESC-Grades 5-12 STEM Informational Meeting		
399511 - Feb 18, 2020 9:00 am - 4:00 pm	21	21
GFESC Next Year Scheduling for Secondary Schools		
401288 - Feb 18, 2020 9:00 am - 3:00 pm	28	22
GFESC DTC Work Day		
401407 - Feb 18, 2020 9:00 am - 3:30 pm	40	35
GFESC - ELEMENTARY SCIENCE TEACHER BOOT CAMP, DAY 1 OF 2		
398255 - Feb 19, 2020 9:00 am - 4:00 pm	3	3
GFESC DTC Work day		
401415 - Feb 19, 2020 9:00 am - 3:30 pm	16	0
GFESC Deca Summit		
415890 - Feb 19, 2020 9:00 am - 4:00 pm	5	5
GFESC - SECONDARY PRINCIPALS' MEETING		
386242 - Feb 20, 2020 9:30 am - 12:30 pm	4	0
GFESC - ELEMENTARY SCIENCE TEACHER BOOT CAMP, DAY 2 OF 2		
398260 - Feb 20, 2020 9:00 am - 4:00 pm	5	5
GFESC Employee Access Center (EAC) Workshop followed by a Work Day		
401352 - Feb 20, 2020 9:30 am - 4:00 pm	25	25
GFESC DTC Work Day		
401417 - Feb 20, 2020 9:00 am - 3:30 pm	17	8
GFESC-Dyslexia Contact Meeting		
401242 - Feb 21, 2020 9:00 am - 12:00 pm	39	34
GFESC eSchool Scheduling Workday		
403911 - Feb 24, 2020 9:00 am - 3:00 pm	2	2
GFESC - MIDDLE SCHOOL SCIENCE TEACHER BOOT CAMP, DAY 1 OF 2		
398264 - Feb 26, 2020 9:00 am - 4:00 pm	11	10
GFESC DTC Work Day		
401445 - Feb 26, 2020 9:00 am - 3:30 pm	10	9
GFESC - MIDDLE SCHOOL SCIENCE TEACHER BOOT CAMP, DAY 2 OF 2		
398266 - Feb 27, 2020 9:00 am - 4:00 pm	11	11
GFESC DTC Work Day		
401419 - Feb 27, 2020 9:00 am - 3:30 pm	16	11
GFESC eSchool Scheduling Workday		
403915 - Feb 27, 2020 9:00 am - 3:00 pm	16	13
GFESC DTC Work Day		
401422 - Feb 28, 2020 9:00 am - 3:30 pm	11	4

Session	Registered	Attended
GFESC - ADE SCIENCE OF READING ASSESSOR TRAINING		
391961 - Mar 3, 4, 2020 9:00 am - 4:00 pm	63	59
GFESC-Obesity Prevention for School Nurses and Scoliosis		
399936 - Mar 4, 2020 9:00 am - 3:30 pm	12	9
GFESC - YEAR 2 NOVICE TEACHER TRAINING - DAY 4 FOR K-6		
384285 - Mar 10, 2020 9:00 am - 3:30 pm	45	43
GFESC - SUPERINTENDENTS' MEETING		
395881 - Mar 10, 2020 10:00 am - 3:00 pm	2	0
GFESC - SCIENCE TEACHER BOOT CAMP FOLLOW-UP SUPPORT WORK DAY		
398268 - Mar 10, 2020 9:00 am - 4:00 pm	6	6
GFESC _Salary Negotiations, Personnel Budgeting, and Contracts using Cognos and Work Day		
405097 - Mar 10, 2020 9:30 am - 4:00 pm	12	10
GFESC - YEAR 2 NOVICE TEACHER TRAINING - DAY 4 FOR 7-12		
384295 - Mar 12, 2020 9:00 am - 3:30 pm	68	63
GFESC GT Coordinators Meeting		
413568 - Apr 8, 2020 9:00 am - 10:30 am	17	17
GFESC GT Coordinators Meeting		
413664 - Apr 16, 2020 9:00 am - 10:30 am	14	14
GFESC GT Coordinators Meeting		
413668 - Apr 23, 2020 9:00 am - 10:30 am	16	16
GFESC GT Coordinators Meeting		
413670 - Apr 27, 2020 9:00 am - 10:30 am	13	13
GFESC GT Coordinators Meeting		
413672 - May 6, 2020 9:00 am - 10:30 am	20	20
GFESC TI-84 and TI-Smartview Tips and Tricks		
409484 - May 12, 2020 10:00 am - 11:00 am	3	3
GFESC ** VIRTUAL** TI-84 Little known and Used Features		
409481 - May 14, 2020 10:00 am - 11:00 am	5	4
GFESC GT Coordinators Meeting		
413675 - May 19, 2020 9:00 am - 10:30 am	21	21
GFESC GT Coordinators Meeting		
413678 - May 21, 2020 9:00 am - 10:30 am	17	17
GFESC 3-6 RISE: Day 1: Science of Reading: Basis in Phonology		
402546 - Jun 1, 2020 9:00 am - 3:30 pm	24	24
GFESC ADE SoR Content-Area Reading Strategies		
403192 - Jun 1, 2020 9:00 am - 4:00 pm	35	35
GFESC Online Book Study: Essentials of Assessing, Preventing, and Overcoming Reading Difficulties		
406778 - Jun 1, 2020 8:00 am - 12:00 pm	61	0
GFESC Online Book Study: Disrupting Thinking		
406867 - Jun 1, 2020 8:00 am - 12:00 pm	37	0
GFESC Online Book Study: No More Fake Reading		
406869 - Jun 1, 2020 8:00 am - 12:00 pm	38	0
GFESC Online Book Study: Speech to Print 3rd Edition		
408476 - Jun 1, 2020 8:00 am - 4:00 pm	22	0
GFESC **VIRTUAL** High School Computer Science and Certification Preparation		
409284 - Jun 1, 3, 5, 8, 10, 2020 8:30 am - 3:30 pm	2	2

Session	Registered	Attended
GFESC ONLINE BOOK STUDY: Making Sense of Mathematics for Teaching, Grades k-2 by Juli K. Dixon, et al.		
410106 - Jun 1, 2020 8:00 am - 12:00 pm	16	0
GFESC 3-6 RISE Day 2: Phonics		
402556 - Jun 2, 2020 9:00 am - 3:30 pm	22	22
GFESC Cohort 4 K-2 RISE Day 1		
404799 - Jun 2, 2020 9:00 am - 3:30 pm	19	18
GFESC 3-6 RISE Day 3: Morphology and Etymology		
402559 - Jun 3, 2020 9:00 am - 3:30 pm	24	23
GFESC Cohort 4 K-2 RISE Day 2		
404801 - Jun 3, 2020 9:00 am - 3:30 pm	19	18
GFESC Science of Reading, Phonological Awareness		
404950 - Jun 5, 2020 9:00 am - 3:30 pm	36	35
GFESC Online Book Study: Making Sense of Mathematics for Teaching Grades 6-8		
410430 - Jun 5, 2020 8:00 am - 12:00 pm	3	0
GFESC CPI		
417278 - Jun 5, 2020 8:00 am - 12:00 pm	25	25
GFESC 3-6 RISE Day 4: Vocabulary- Word Level Comprehension		
402597 - Jun 8, 2020 9:00 am - 3:30 pm	30	30
GFESC ACT Aspire and the Science and Engineering Practices Online Bootcamp.		
413303 - Jun 8, 2020 9:00 am - 12:00 pm	3	3
GFESC 3-6 RISE Day 5: Text Level Comprehension		
402602 - Jun 9, 2020 9:00 am - 3:30 pm	30	30
GFESC K-2 RISE Cohort 4 Day 3		
404910 - Jun 9, 2020 9:00 am - 3:30 pm	19	18
GFESC Into the Outdoors at Petite Jean Mountain		
406542 - Jun 9, 2020 9:00 am - 4:00 pm	34	30
GFESC **VIRTUAL** Algebra:Expressions,Equations,and Inequalities 2 days		
406613 - Jun 9, 10, 2020 8:30 am - 3:30 pm	9	9
GFESC ***Virtual*** The Art of Working Together: Co-Teaching And Beyond		
402325 - Jun 10, 2020 8:30 am - 11:30 am	17	11
GFESC 3-6 RISE Day 6: Putting It All Together		
402610 - Jun 10, 2020 9:00 am - 3:30 pm	30	28
GFESC K-2 RISE Cohort 4 Day 4		
404866 - Jun 10, 2020 9:00 am - 3:30 pm	19	18
GFESC GT Coordinator Meeting ***ZOOM***		
417148 - Jun 10, 2020 1:00 pm - 3:00 pm	13	13
GFESC Critical Reading Day 1: Engaging the Reader		
403203 - Jun 11, 2020 9:00 am - 4:00 pm	10	9
GFESC Science Unit Development DAY 1		
406486 - Jun 11, 2020 9:00 am - 4:00 pm	9	6
GFESC Critical Reading Day 2: Comprehension Strategies		
403206 - Jun 12, 2020 9:00 am - 4:00 pm	10	8
GFESC Science Unit Development DAY 2		
406500 - Jun 12, 2020 9:00 am - 4:00 pm	8	5
GFESC **VIRTUAL** QuEST for Mathematical Proficiency:6-8 1-Day		
408762 - Jun 12, 2020 8:30 am - 3:30 pm	11	9
GFESC - Year One Novice Teacher Training - Grades K-6th: Day 1		
405763 - Jun 15, 2020 9:00 am - 4:00 pm	11	11

Session	Registered	Attended
GFESC Number Talks and other Instructional Routines to Implement in the Mathematics Classroom		
406587 - Jun 15, 2020 9:00 am - 4:00 pm	10	10
GFESC ***VIRTUAL** I've heard of Google Classroom, now what?		
415984 - Jun 15, 2020 9:00 am - 12:00 pm	100	93
GFESC ** Virtual** K-4 Introduction to Computer Science		
409142 - Jun 16, 17, 2020 8:30 am - 3:30 pm	4	4
GFESC **VIRTUAL** 5-8 Introduction to Computer Science		
409158 - Jun 16, 17, 2020 8:30 am - 3:30 pm	2	2
GFESC **VIRTUAL** Coding Block		
409164 - Jun 16, 17, 2020 8:30 am - 3:30 pm	2	2
GFESC GT Coordinator Meeting ** ZOOM ***		
417273 - Jun 17, 2020 10:00 am - 12:00 pm	9	9
GFESC Critical Reading Day 3: Vocabulary and Word Study		
403578 - Jun 18, 2020 9:00 am - 4:00 pm	8	6
GFESC Exploring the World with Virtual Field Trips		
405801 - Jun 18, 2020 9:00 am - 4:00 pm	31	21
GFESC ***VIRTUAL** K-4 Deeper Dive Into Computer Science		
409150 - Jun 18, 19, 2020 8:30 am - 3:30 pm	1	1
GFESC ** VIRTUAL** Coding Block Resources		
409170 - Jun 18, 19, 2020 8:30 am - 3:30 pm	2	0
GFESC Critical Reading Day 4: Responding to Text		
403580 - Jun 19, 2020 9:00 am - 4:00 pm	10	9
GFESC - Year 1 Novice teacher Training- K-6- Day 2		
405793 - Jun 19, 2020 9:00 am - 4:00 pm	11	11
GFESC FACS Meeting -Pea Ridge Program Improv.		
418692 - Jun 19, 2020 11:30 am - 3:00 pm	5	5
GFESC - Teaching From Visual Text: Using Art to Improve Literacy		
401346 - Jun 22, 2020 9:00 am - 4:00 pm	15	12
GFESC 3-6 RISE Day 4: Vocabulary- Word Level Comprehension		
402562 - Jun 22, 2020 9:00 am - 4:00 pm	25	25
GFESC Year 2 Novice Teacher Training- K-6th- Day 1		
405844 - Jun 22, 2020 9:00 am - 4:00 pm	19	17
GFESC Year 1 Novice Teacher Training-Day 1- 7-12		
406276 - Jun 22, 2020 9:00 am - 4:00 pm	9	0
GFESC **VIRTUAL** Arkansas K-8 CS Lead Teacher Bonus Program		
409268 - Jun 22, 24, 26, 29, 30, 2020 8:30 am - 3:30 pm	3	0
GFESC 3-6 RISE Day 5: Text Level Comprehension		
402566 - Jun 23, 2020 9:00 am - 3:00 pm	25	24
GFESC 3-6 RISE Days 4-6		
403583 - Jun 23, 2020 9:00 am - 4:00 pm	25	23
GFESC K-2 RISE Cohort 4 Day 5		
404896 - Jun 23, 2020 9:00 am - 4:00 pm	19	18
GFESC This is Arkansas		
406553 - Jun 23, 2020 9:00 am - 3:30 pm	52	47
GFESC FACS Zoom Updates		
418702 - Jun 23, 2020 9:30 am - 12:00 pm	14	14
GFESC 3-6 RISE Day 6: Putting It All Together		
402589 - Jun 24, 2020 9:00 am - 4:00 pm	25	24
GFESC K-2 RISE Cohort 4 Day 6		
404827 - Jun 24, 2020 9:00 am - 4:00 pm	20	19

Summary Registered

Printed Date: 6/26/2020 Last modified: 6/26/2020

Session	Registered	Attended
GFESC Year 3 Novice Teacher Training- Day 1- K-6		
405881 - Jun 24, 2020 9:00 am - 4:00 pm	19	19
GFESC _K-2 Primary Enrichment & Differentiation Workshop: Meeting the Needs of Gifted Learners in the K-2 Classroom		
406469 - Jun 24, 26, 2020 9:00 am - 4:00 pm	10	8
GFESC CTE Update Workshop		
418683 - Jun 24, 2020 9:00 am - 4:00 pm	19	19
GFESC Year 1 Novice Teacher Training-Day 2- 7-12		
406282 - Jun 25, 2020 9:00 am - 4:00 pm	7	7
GFESC Introduction to Arkansas State Science Standards for Middle and High School Teachers		
406515 - Jun 25, 2020 9:00 am - 3:00 pm	5	4
GFESC 3-5: 3-5 FUNdamentals of Fractions 2 days		
406584 - Jun 25, 26, 2020 9:00 am - 4:00 pm	9	0
GFESC ** VIRTUAL** I've heard of Google Classroom, now what?		
415986 - Jun 25, 2020 9:00 am - 12:00 pm	100	89
GFESC Year 2 Novice Teacher Training- Day 1 for 7-12		
405861 - Jun 26, 2020 9:00 am - 4:00 pm	19	0
GFESC Introduction to Arkansas State Science Standards for Elementary Teachers		
406513 - Jun 26, 2020 9:00 am - 4:00 pm	7	0
GFESC Science of Reading-Decoding		
416633 - Jun 26, 2020 9:00 am - 3:30 pm	15	0
GFESC - History in Your Own Backyard		
401478 - Jun 29, 2020 9:00 am - 4:00 pm	8	0
GFESC Year 3 Novice Teacher Training-Day 1- 7-12		
405929 - Jun 29, 2020 9:00 am - 4:00 pm	26	0
GFESC GT Bootcamp		
406452 - Jun 29, 2020 8:30 am - 3:30 pm	10	0
GFESC Cognitively Guided Instruction, Year 1		
406582 - Jun 29, 30, Jul 1, 2020 9:00 am - 4:00 pm	23	0
GFESC **VIRTUAL** Advanced Networking/Hardware - High School CS Professional Development		
409337 - Jun 29, 30, Jul 1, 2020 8:30 am - 3:30 pm	3	0