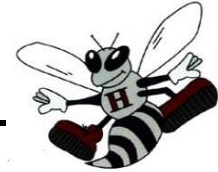


Hudson Independent School District - Lufkin, Texas 75904
W.F. Peavy Primary - 2016-17 School Supplies



Pre-K

- 2, spiral wide rule 8.5 x 10.5 Notebook 70 ct
- 2, boxes of facial tissue 176 ct
- Plastic school box 8.5 x 5.7 x 2.5
- 2 Crayola crayons 24 ct
- 12 x 18 - 50 count asst. const paper
- Crayola wash thick classic markers 8 ct
- Four color pack of play doh 5 oz cans
- Crayola washable watercolors 8 ct
- Crayola 7" Pre sharpened colored pencils 12 ct
- 12 x 18 manila paper 50 ct
- Black Expo Dry erase markers (Girls only)
- Assorted colored Expo Dry erase markers (Boys only)



Additional \$25 for each grade level to cover backpack, class field trip shirt and Peavy Journal/Notebook

Kindergarten

- 1 fiskar scissors
- 2 boxes of Kleenex
- 2 plastic school boxes (no zipper pouches)
- 4 boxes 24ct. Box Crayons
- 2 pink erasers
- 1 pkg. small construction paper
- 1 box washable markers
- 1 pkg. small manila paper
- 1 pkg. playdoh (Boys only)
- Watercolors Girls only)



Additional \$25 for each grade level to cover backpack, class field trip shirt and Peavy Journal/Notebook

1st Grade

- 1 blunt 5" Fiskars scissors
- 1-70 count spiral wide ruled notebook
- 2 boxes 175 count tissue
- 1 plastic school box
- 3 boxes of 24 count crayola crayons
- 2 pink erasers
- 1 pkg colored construction paper
- 1 box washable thick markers
- 2 pkgs 3x5 index cards
- 1 yellow highlighter



Additional \$25 for each grade level to cover backpack, class field trip shirt and Peavy Journal/Notebook

2nd Grade

- 1pair – sharp 5" Fiskars Scissors
- 2- 70 count wide ruled spiral notebooks
- 2 boxes 175 count tissue
- 1 plastic school box
- 3 boxes of 24 count Crayola crayons
- 1 wide rule filler notebook paper
- 4 pink erasers or 1 pkg. 25 count Cap Erasers
- 1 pkg. colored construction paper
- 1 pkg. Crayola Markers
- 1 pkg 3x5 index cards
- Earbud or Headphones (Student preference)
- 1 Yellow highlighter



Additional \$25 for each grade level to cover backpack, class field trip shirt and Peavy Journal/Notebook