



WEATHERFORD  
PUBLIC SCHOOLS  
EAST & WEST ELEMENTARY



June

6/30/2020

MONTHLY PROGRESS REPORT

MONTHLY OVERVIEW

WEST ELEMENTARY

- ♦ Dug, formed and poured upper and middle section footings and stem walls
- ♦ Started underground plumbing
- ♦ Started underground electric

EAST ELEMENTARY

- ♦ Started running sanitary sewer
- ♦ Completed sitework for building and parking
- ♦ Started footings and spot footings

MIDDLE SCHOOL GYM—NEW HVAC

- ♦ Set new RTU units



## UPCOMING ACTIVITIES

### WEST ELEMENTARY

- ♦ FORM AND POUR FLOORS
- ♦ FORM AND POUR SHELTER WALLS (NORTH AND SOUTH)
- ♦ CONTINUE UNDERGROUND ELECTRICAL
- ♦ SITEWORK ON ALLEY ROAD
- ♦ STRUCTURAL STEEL DELIVERIES

### EAST ELEMENTARY

- ♦ START FOOTINGS AND SPOT FOOTINGS
- ♦ INSTALL REMAINING WATERLINE & FIRE HYDRANTS
- ♦ START UNDERGROUND PLUMBING

### MIDDLE SCHOOL GYM—NEW HVAC

- ♦ INSTALL NEW DUCT WORK IN GYM
- ♦ INSTALL NEW POWER AND GAS TO RTUs
- ♦ BRICK WING WALLS AROUND NEW UNITS



# LOOKAHEAD



## WEST ELEMENTARY



JOE D. HALL  
General Contractors, LLC  
P.O. Box 100  
Elk City, OK 73648 Fax 580/225-3420

NO.	DESCRIPTION	JULY							AUGUST																									
		6	7	8	9	10	11	12	13	14	15	16	17	18	19	20	21	22	23	24	25	26	27	28	29	30	31	1	2	3	4	5	6	7
1	UNDER SLAB PLUMBING - KITCHEN																																	
2	FLOOR DRAINS - NW UPPER SECTION SLAB																																	
3	UNDER SLAB ELECTRICAL																																	
4	CONCRETE POUR - NE UPPER SECTION																																	
5	CONCRETE POUR - NORTH SHELTER WALLS																																	
6	CONCRETE POUR - EAST UPPER SECTION																																	
7	CONCRETE POUR - RAMPS AND CENTER																																	
8	CONCRETE POUR - MID SECTION TO V																																	
9	CONCRETE POUR - SOUTH SHELTER WALLS																																	
10	FORM AND POUR FILL VALUT																																	
11	STRUCTURAL STEEL DELIVERY - SEQ 1																																	
12	START STRUCTURAL STEEL ERECTION																																	



## EAST ELEMENTARY



JOE D. HALL  
General Contractors, LLC  
P.O. Box 100  
Elk City, OK 73648 Fax 580/225-3420

NO.	DESCRIPTION	JULY							AUGUST																									
		6	7	8	9	10	11	12	13	14	15	16	17	18	19	20	21	22	23	24	25	26	27	28	29	30	31	1	2	3	4	5	6	7
1	DIG FOOTINGS & INSTALL REBAR/ BOLTS																																	
2	POUR FOOTINGS																																	
3	START UNDERGROUND PLUMBING																																	
4	INSTALL SS AND WATERLINE																																	
5																																		
6																																		
7																																		

THIS SUBJECT TO CHANGE AND IS ONLY INTENDED FOR FOR DISCUSSION





# PHOTOS



Shelter Reinforcement  
Doorway Embeds  
West Elementary



Floor with gravel subbase and vapor  
barrier



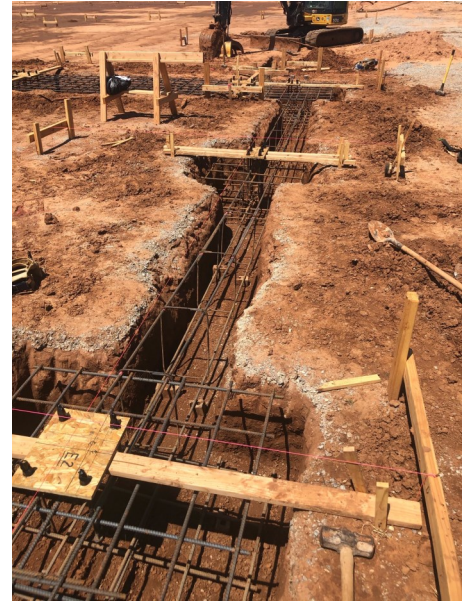




# PHOTOS



Continuous Footings at  
East Elementary



Sitework at  
East Elementary





# PHOTOS



New RTUs being set at the  
Middle School Gym







# CONSTRUCTION TEAM

## **Joe D. Hall General Contractors, LLC.**

Joe D. Hall , Owner

Van Storm, Project Manager

Shawn Bonner, Project Manager

Mike Purdum, Site Superintendent

Grace Hall, HR and Marketing      Carolyn Pasby, Accounting

## **Easley Associates Architects**

Roy Easley, Principal Architect

Matt Easley   Seth Benson

## **Cedar Creek— Civil Engineer**

Jason Emmett   Lance Mills

## **Holtzen Engineering Group—Structural Engineer**

Scott E. Holtzen, P.E.

## **TFK Engineering, Inc. - MEP Engineer**

Thomas Keeter P.E.

## **Weatherford Public Schools**

Chad Wilson, Superintendent

Steve Callen, Assistant Superintendent

Brad Howl , Principal East Elementary

Robyn Randol, Principal West Elementary

### **Board of education**

Dennis green

Kim Ingram

Chris Gregston

Carter Robison   Bryan Bayless

