

Math Puzzles and Riddles For Grade 2



Name _____

Date _____

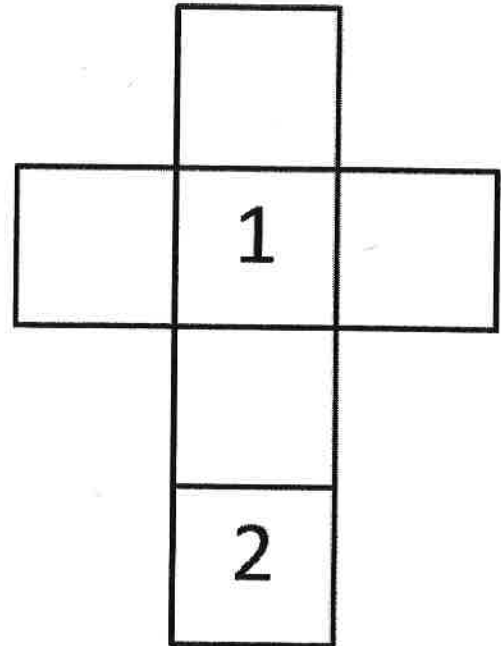
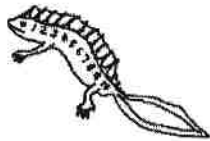


NEWTON'S CROSSES PUZZLE 2

1) Write the numbers 3, 4, 5 and 6 in the correct place so that each line of the cross adds up to 11.

3 4 5 6

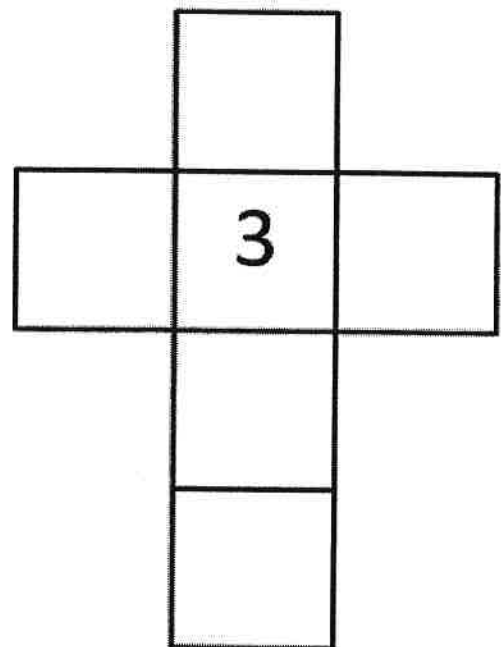
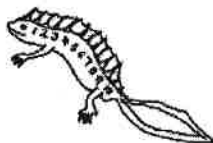
Total must be 11



2) Write the numbers 1, 2, 4, 5 and 6 in the squares so that each line of the cross adds up to 12.

1 2 4 5 6

Total must be 12



Free Math Sheets, Math Games and Math Help

MATH-SALAMANDERS.COM

Name _____

Date _____

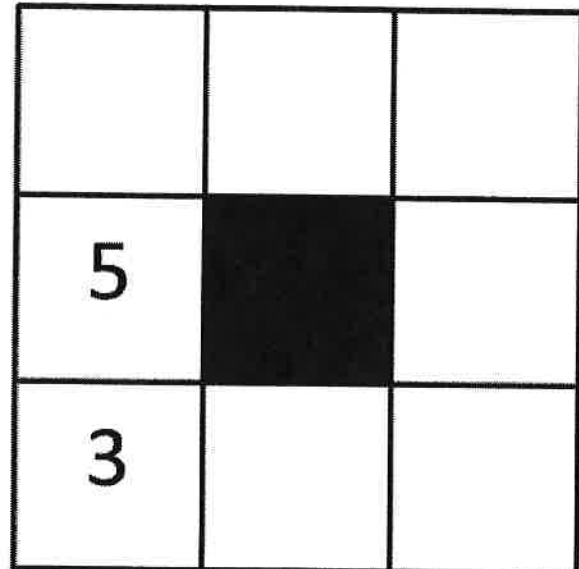
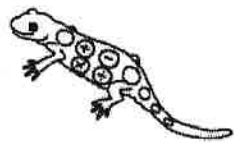


QUADRA'S SQUARE PUZZLE 2

1) Write the numbers 1, 2, 4, 6, 7, 8 in the correct place so that each side of the square adds up to 15.

1 2 4 6 7 8

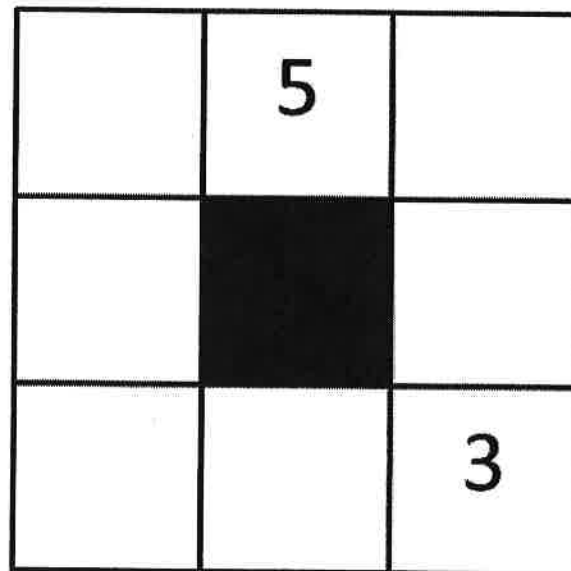
Total must be 15



2) Can you write the numbers 1, 2, 4, 6, 7, 8 in the correct place so that each side of the square adds up to 12?

1 2 4 6 7 8

Total must be 12



Free Math Sheets, Math Games and Math Help

MATH-SALAMANDERS.COM

Name _____

Date _____



MAGIC SQUARE 2

A magic square is a square where each line of 3 numbers (vertical, horizontal and diagonal) adds up to the same amount.

1) Write the numbers 1, 2, 3, 4, 6, 7, 8, 9 in the correct place so that each line (vertical, horizontal and diagonal) adds up to 15.

1 2 3 4 6 7 8

Total must be 15



9	5	

2) Can you make a new magic square using the digits 0, 1, 2, 3, 4, 5, 6, 7, 8 so that each line adds up to 12?

0 1 2 3 4 6 7

Total must be 12



	8	
5		



Free Math Sheets, Math Games and Math Help

MATH-SALAMANDERS.COM

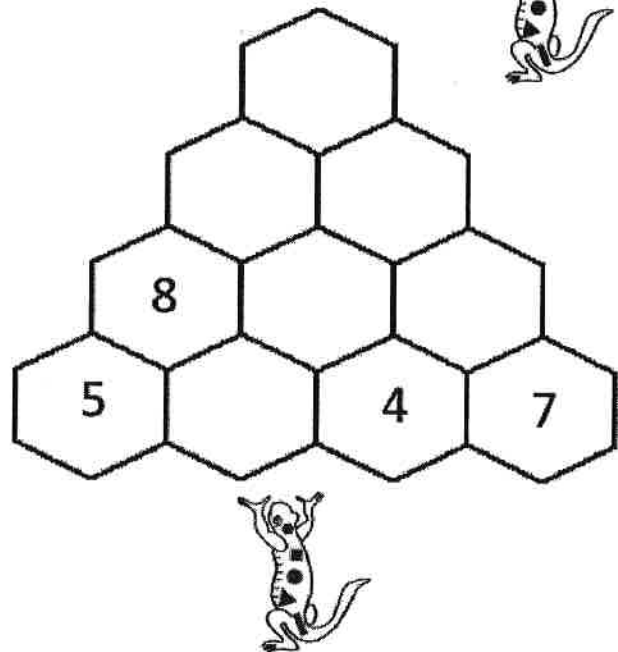
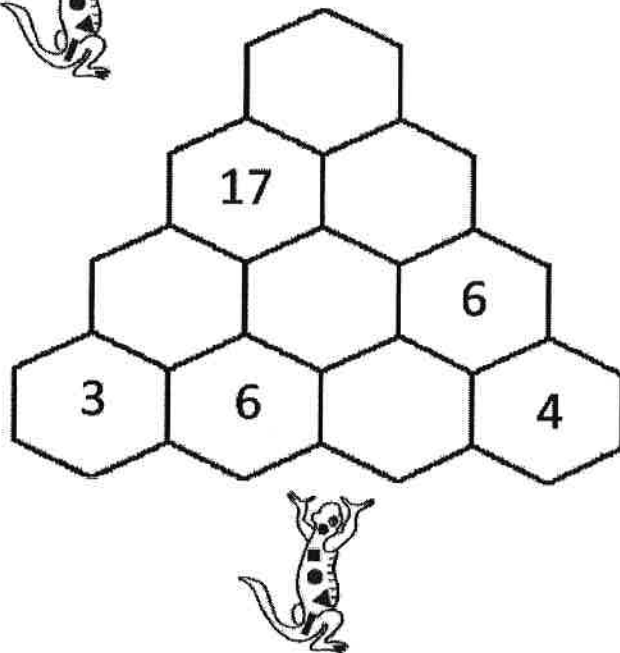
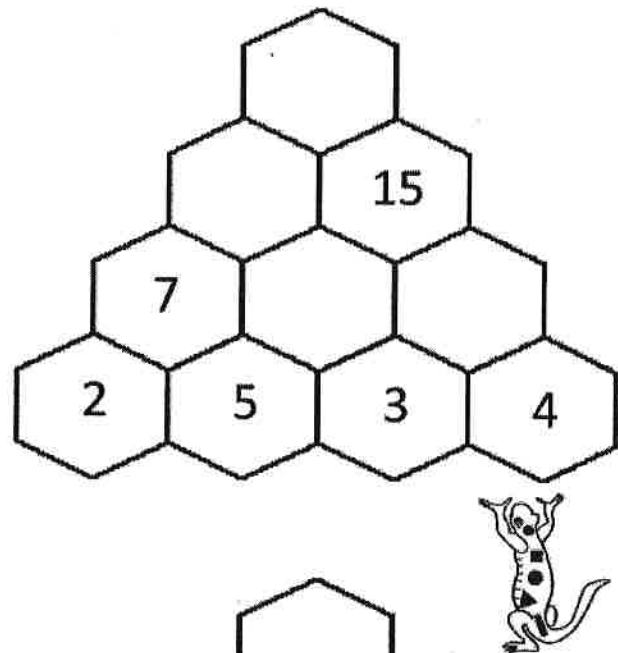
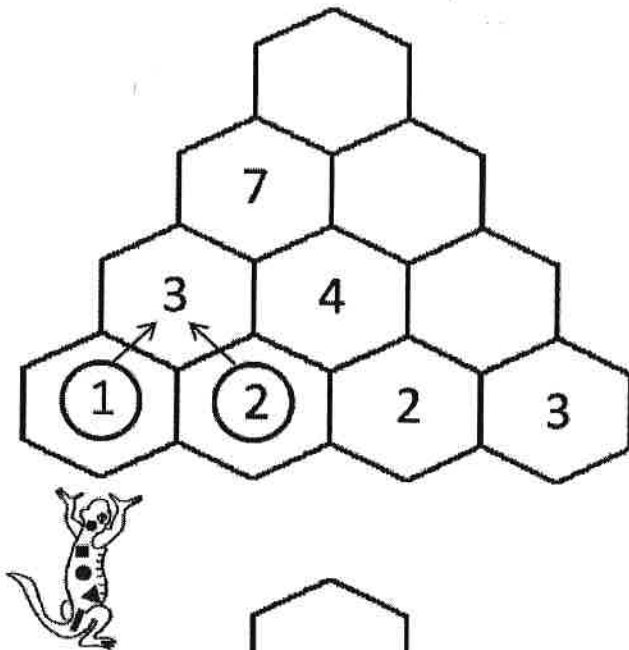
Name _____

Date _____



SALLY'S HEXAGON NUMBER PUZZLE 2

Each hexagon is made by adding up the numbers in the two hexagons below it. Fill in the missing numbers in these puzzles.



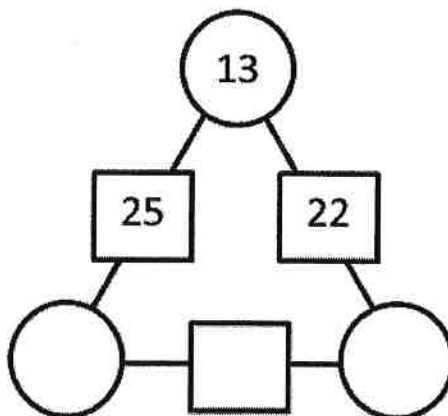
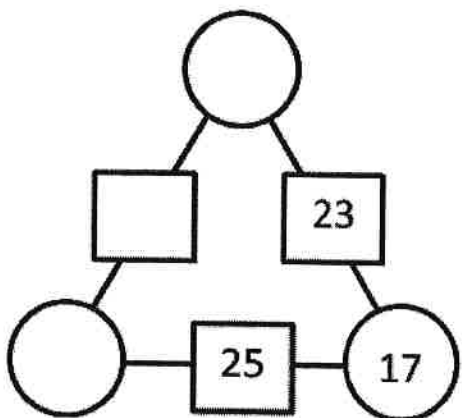
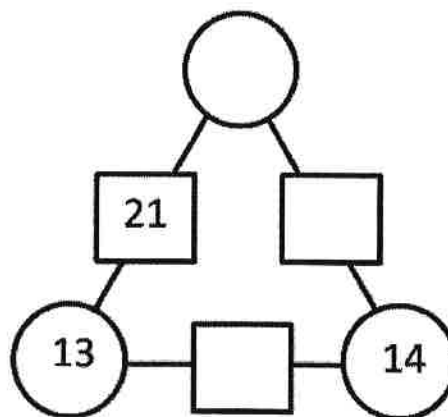
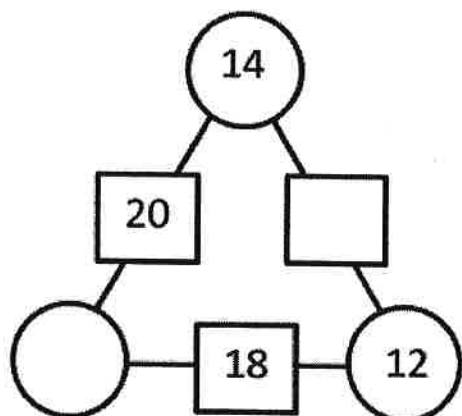
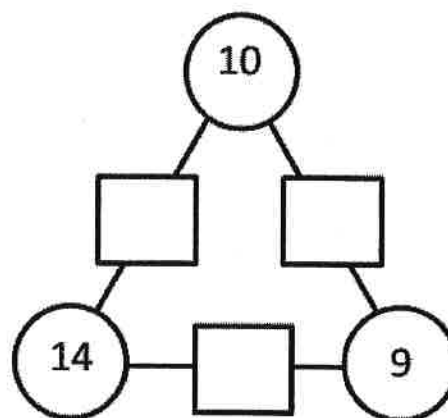
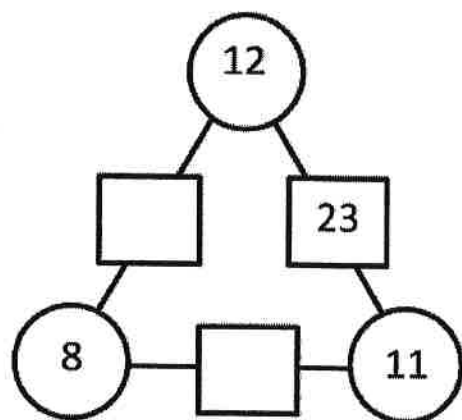
Name _____

Date _____



ARITHMOGON TRIANGLE PUZZLE 2A

The numbers in the circles added together makes the number in the linking rectangle. Find the missing numbers in this puzzle.



Remember to check your answers carefully.

Free Math Sheets, Math Games and Math Help
MATH-SALAMANDERS.COM



Name _____

Date _____



QUADRA'S OPERATION PUZZLE 2

In each box, choose a sign: +, - or x to make the calculation correct. You can use the same operation more than once!

$$\boxed{3} \quad \boxed{\times} \quad \boxed{2} \quad \boxed{-} \quad \boxed{1} \quad \boxed{=} \quad \boxed{5}$$

$$\boxed{7} \quad \boxed{} \quad \boxed{3} \quad \boxed{} \quad \boxed{2} \quad \boxed{=} \quad \boxed{8}$$

$$\boxed{2} \quad \boxed{} \quad \boxed{3} \quad \boxed{} \quad \boxed{4} \quad \boxed{=} \quad \boxed{2}$$

$$\boxed{2} \quad \boxed{} \quad \boxed{1} \quad \boxed{} \quad \boxed{1} \quad \boxed{=} \quad \boxed{3}$$

$$\boxed{6} \quad \boxed{} \quad \boxed{2} \quad \boxed{} \quad \boxed{1} \quad \boxed{=} \quad \boxed{3}$$

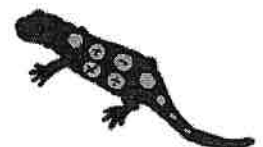
$$\boxed{2} \quad \boxed{} \quad \boxed{5} \quad \boxed{} \quad \boxed{3} \quad \boxed{=} \quad \boxed{10}$$

$$\boxed{4} \quad \boxed{} \quad \boxed{2} \quad \boxed{} \quad \boxed{3} \quad \boxed{=} \quad \boxed{5}$$

$$\boxed{3} \quad \boxed{} \quad \boxed{3} \quad \boxed{} \quad \boxed{4} \quad \boxed{=} \quad \boxed{13}$$

$$\boxed{2} \quad \boxed{} \quad \boxed{4} \quad \boxed{} \quad \boxed{5} \quad \boxed{=} \quad \boxed{1}$$

$$\boxed{4} \quad \boxed{} \quad \boxed{2} \quad \boxed{} \quad \boxed{5} \quad \boxed{=} \quad \boxed{3}$$



Name _____

Date _____





NUMBER GRID CHALLENGE 2: TARGET 25

Start the maze with zero.

You have to finish the maze with a total of 25.

Your route can go **right** or **down** at each turn.

There are 3 possible routes. Can you find them?

					
	START	4	3	7	5
	2	9	8	1	3
	3	5	7	6	4
	8	1	0	2	FINISH

Extra Challenge

Find the route with the highest total.

Find the route with the lowest total.

Name _____

Date _____



MAKE 30

Use the numbers in the grid each time.

6	7	12	25	21
9	10	19	13	18
16	14	23	11	5

Challenge 1

Find **pairs** of numbers that add up to 30.

Try to find 6 different pairs.

Challenge 2

Try to find sets of **3** numbers that add up to make 30.

Try to find 6 different answers.

Name _____

Date _____



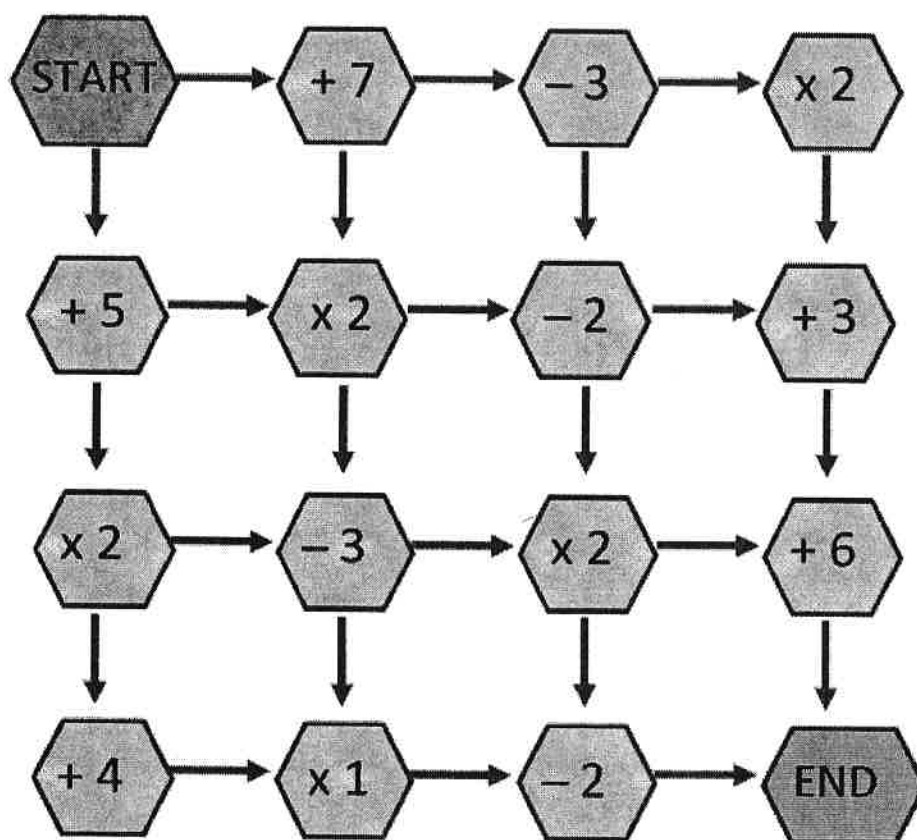
NUMBER MAZE: TARGET 20

Start the maze with zero.

You have to finish the maze with a total of 20.

You must follow one of the arrows each time.

There are two possible routes. Can you find them?



Extra Challenge

Find the route with the highest total.

Find the route with the lowest total.

Name _____

Date _____



MATH RIDDLES 2A

Select the correct answer from a choice of 8 possibilities.

- 1) I am a 3 digit number.

My hundreds digit is odd but I am an even number.

I am more than 6 hundreds.

My tens digit is one less than my hundreds digit.

Who am I?

387	765	572	986
874	628	729	1320

- 2) I am less 5 hundreds.

My hundreds digit is even.

My tens digit is in the 3 times table.

I am odd.

Who am I?

425	719	382	873
463	258	337	236



Free Math Sheets, Math Games and Math Help

MATH-SALAMANDERS.COM



Name _____

Date _____



MATH RIDDLES 2B

Select the correct answer from a choice of 8 possibilities.

- 1) I am a 3 digit number.

My ones digit is more than my hundreds digit.

My tens digit is even.

Double me is more than a thousand.

Who am I?

327	805	552	759
912	648	467	275

- 2) My ones digit is less than 2.

My hundreds digit is odd.

I am less than 8 hundreds.

My tens digit is my biggest digit.

Who am I?

630	270	385	750
280	382	300	150



Name _____

Date _____



MATH RIDDLES 2C

Select the correct answer from a choice of 8 possibilities.

- 1) I am a 3 digit number.
I am less than 50 tens.
I am more than two hundred.
All my digits are even.
Who am I?

783	94	688	382
1260	246	434	709

- 2) I am more than 5 hundred.
My digits are in descending order.
I am not a multiple of 10.
I am even.
Who am I?

672	324	806	942
873	421	1324	870

