

Math Puzzles and Riddles For Grade 1



Name _____

Date _____

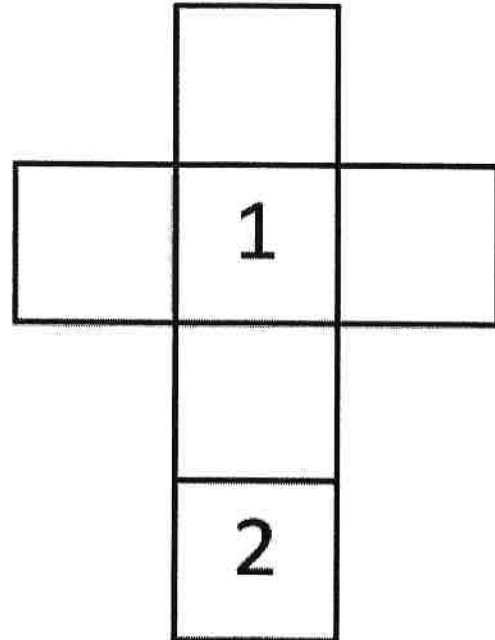
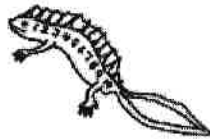


NEWTON'S CROSSES PUZZLE 1

1) Write the numbers 0, 3, 4 and 5 in the correct place so that each line of the cross adds up to 8.

0 3 4 5

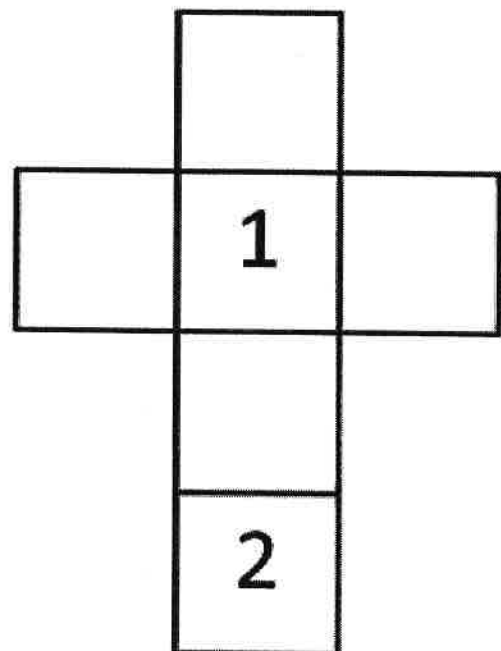
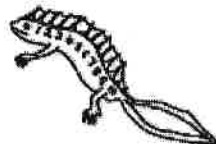
Total must be 8



2) Write the numbers 3, 4, 5 and 6 in the squares so that each line of the cross adds up to 11.

3 4 5 6

Total must be 11



Name _____

Date _____

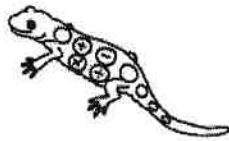


QUADRA'S SQUARE PUZZLE 1

1) Write the numbers 1, 2, 2, 2, 3
in the correct place so that each
side of the square adds up to 6.

1 2 2 2 3

Total must be 6

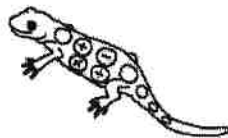


3		
		1
1		

2) Can you write the numbers 2,
2, 4, 6, 6 in the correct place so
that each side of the square adds
up to 12?

2 2 4 6 6

Total must be 12



6		
4		2



Free Math Sheets, Math Games and Math Help

MATH-SALAMANDERS.COM

Name _____

Date _____



MAGIC SQUARE 1

A magic square is a square where each line of 3 numbers (vertical, horizontal and diagonal) adds up to the same amount.

1) Write the numbers 1, 1, 2, 2, 3, 3 in the correct place so that each line (vertical, horizontal and diagonal) adds up to 6.

1 1 2 2 3 3

Total must be 6



3		
	2	
		1

2) Can you make a new magic square using the digits 3, 3, 4, 4, 5, 5 so that each line adds up to 12?

3 3 4 4 5 5

Total must be 12



		5
	4	
3		



Free Math Sheets, Math Games and Math Help

MATH-SALAMANDERS.COM

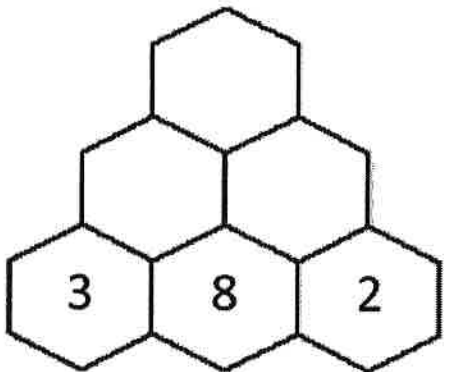
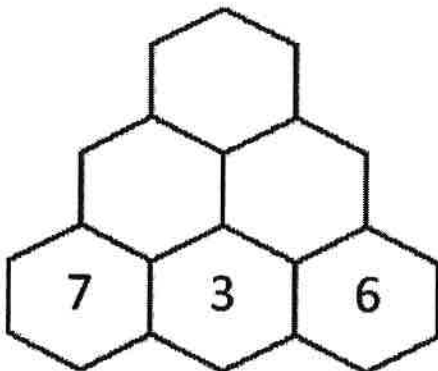
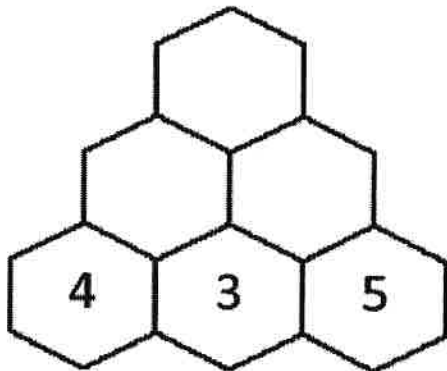
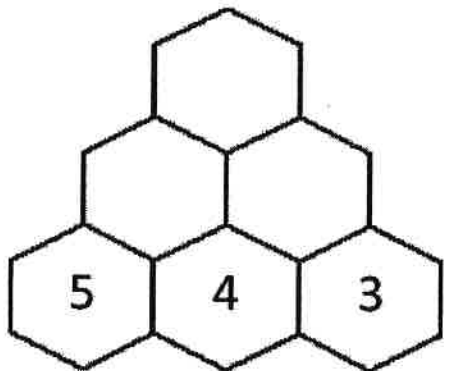
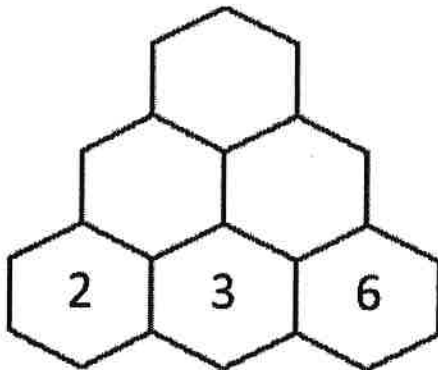
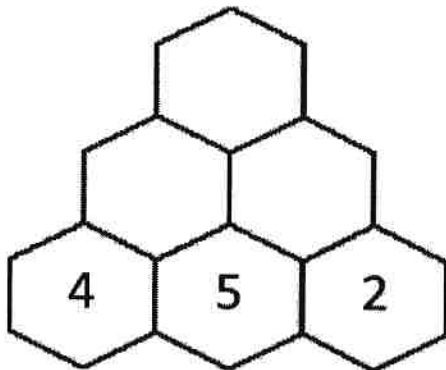
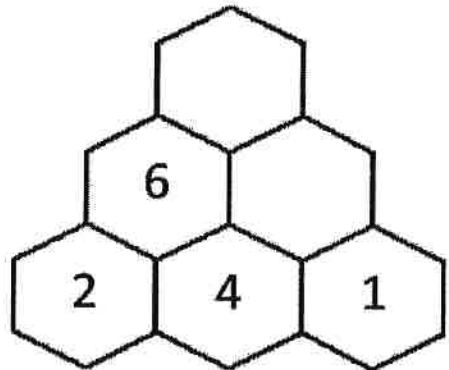
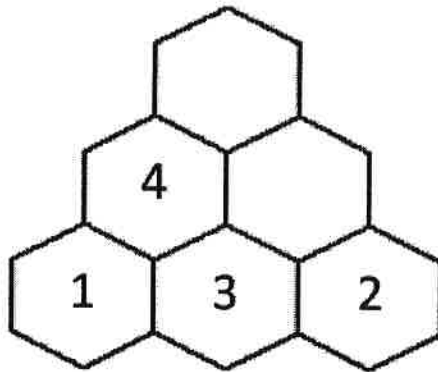
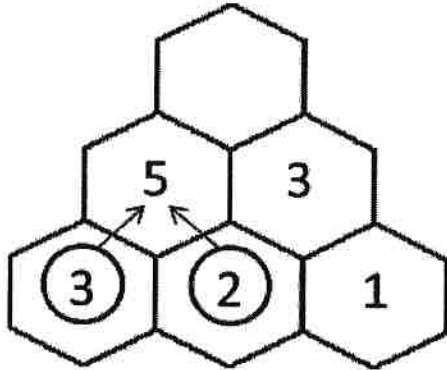
Name _____

Date _____



SALLY'S HEXAGON NUMBER PUZZLE 1

Each hexagon is made by adding up the numbers in the two hexagons below it. Fill in the missing numbers in these puzzles.



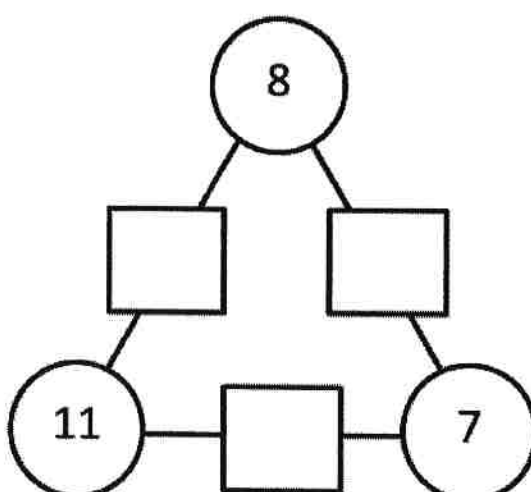
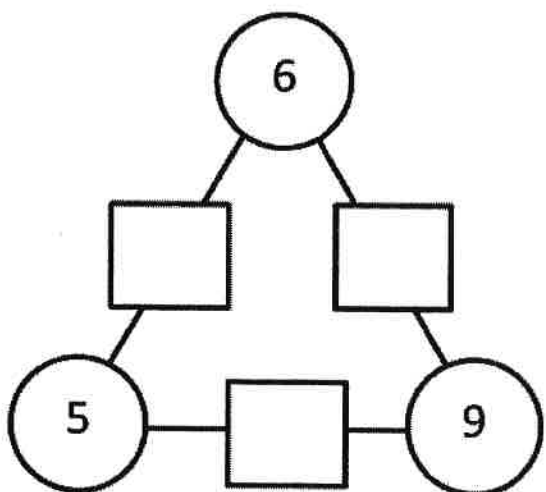
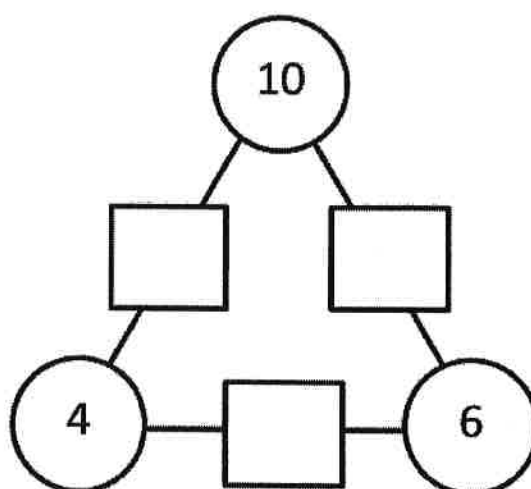
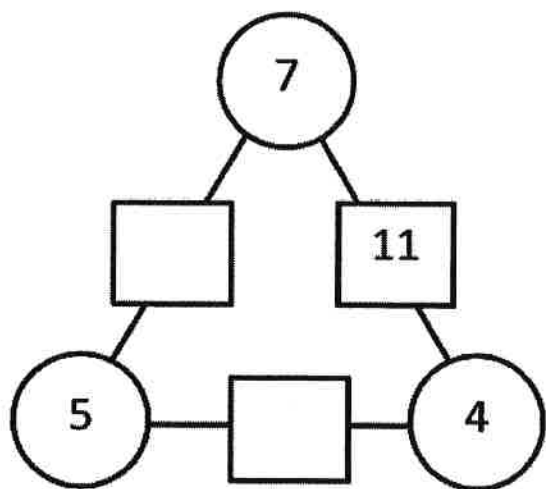
Name _____

Date _____

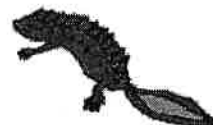


ARITHMOGON TRIANGLE PUZZLE 1A

Work out the missing numbers in the rectangles by adding the numbers in the circles that join them up.



Remember to check your answers carefully.



Name _____

Date _____



QUADRA'S OPERATION PUZZLE 1

In each box, write down the correct operations: + or - to make the sum correct.

$$\boxed{3} \quad (+) \quad \boxed{2} \quad (+) \quad \boxed{1} \quad (=) \quad \boxed{6}$$

$$\boxed{3} \quad (\bigcirc) \quad \boxed{2} \quad (\bigcirc) \quad \boxed{1} \quad (=) \quad \boxed{4}$$

$$\boxed{3} \quad (\bigcirc) \quad \boxed{2} \quad (\bigcirc) \quad \boxed{1} \quad (=) \quad \boxed{2}$$

$$\boxed{3} \quad (\bigcirc) \quad \boxed{2} \quad (\bigcirc) \quad \boxed{1} \quad (=) \quad \boxed{0}$$

$$\boxed{5} \quad (\bigcirc) \quad \boxed{1} \quad (\bigcirc) \quad \boxed{2} \quad (=) \quad \boxed{8}$$

$$\boxed{5} \quad (\bigcirc) \quad \boxed{1} \quad (\bigcirc) \quad \boxed{2} \quad (=) \quad \boxed{6}$$

$$\boxed{5} \quad (\bigcirc) \quad \boxed{1} \quad (\bigcirc) \quad \boxed{2} \quad (=) \quad \boxed{4}$$

$$\boxed{5} \quad (\bigcirc) \quad \boxed{1} \quad (\bigcirc) \quad \boxed{2} \quad (=) \quad \boxed{2}$$

$$\boxed{3} \quad (\bigcirc) \quad \boxed{4} \quad (\bigcirc) \quad \boxed{2} \quad (=) \quad \boxed{5}$$

$$\boxed{3} \quad (\bigcirc) \quad \boxed{4} \quad (\bigcirc) \quad \boxed{2} \quad (=) \quad \boxed{9}$$



Name _____

Date _____



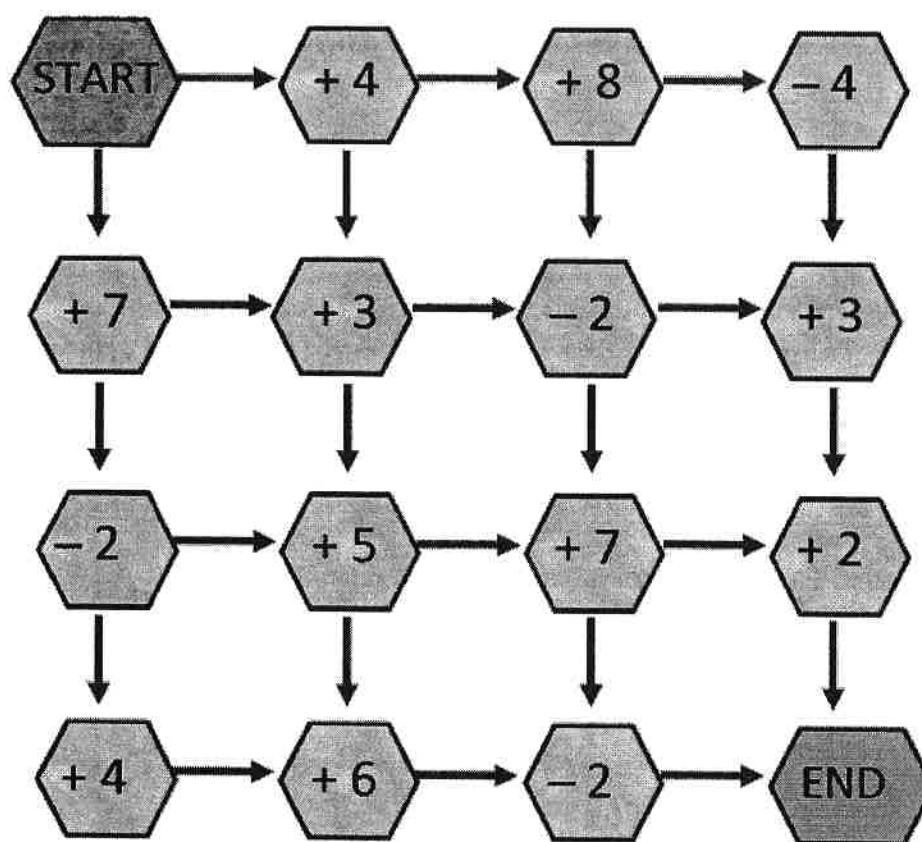
NUMBER MAZE: TARGET 15

Start the maze with zero.

You have to finish the maze with a total of 15.

You must follow one of the arrows each time.

There are two possible routes. Can you find them?



Extra Challenge

Find the route with the highest total.

Find the route with the lowest total.

Name _____

Date _____



NUMBER GRID CHALLENGE 1: TARGET 20

Start the maze with zero.

You have to finish the maze with a total of 20.

Your route can go **right** or **down** at each turn.

There are 2 possible routes. Can you find them?

→				
↓	START	2	1	7
	5	3	4	6
	7	1	0	8
	3	5	9	FINISH

Extra Challenge

Find the route with the highest total.

Find the route with the lowest total.

The month is between March and May.

It's a number you say when you count by tens.

It's two more than 28.

What's the date?

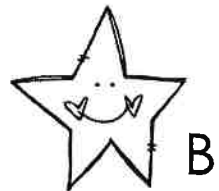


The name of the month has 9 letters.

It's a number that's more than $10 + 10$.

It's 3 less than 31.

What's the date?

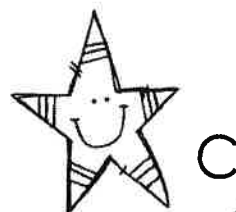


It's the first month of the year.

It's a number that's less than $13 + 2$.

You say the number when you count by fives,
but it's not 5.

What's the date?



It's the month between July and September.

It's more than $6+6$.

It's less than $7+7$.

What's the date?

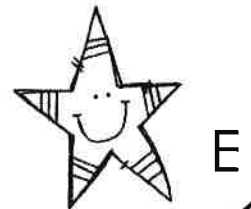


It's the second month of the year.

It's more than $10+3$.

It's less than $10+5$.

What's the date?

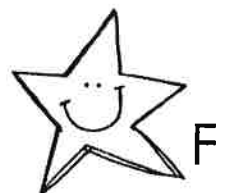


It's the month that starts like monkey and has five letters in its name.

It's more than $10+9$.

It's two less than 26.

What's the date?



Name _____

Date _____



MATH RIDDLES 1A

Select the correct answer from a choice of 6 possibilities.

- 1) I am a single digit.

When you write me I have no start and no end.

I am an even number.

I am like a pair of glasses on their side.

Who am I?

5	9	8
3	12	7

- 2) I am a two digit number.

My value is less than twenty.

I am exactly half-way between 10 and 20.

Who am I?

14	11	25
15	8	12



Name _____

Date _____



MATH RIDDLES 1B

Select the correct answer from a choice of 6 possibilities.

1) I am a two digit number.

I am larger than 30.

I am smaller than 60.

I am even.

Who am I?

26	43	85
19	28	44

2) I am less than 8 tens.

I am more than 5 tens.

I am odd.

If you add my two digits together, you get 10.

Who am I?

25	79	82
73	58	37



Name _____

Date _____



MATH RIDDLES 1C

Select the correct answer from a choice of 6 possibilities.

- 1) I am a two digit number.

I am larger than 50.

I am smaller than 90.

Both my digits are the same.

Who am I?

62	122	29
77	36	44

- 2) I am less than 6 tens.

I am more than 3 tens.

My ones digit is three more than my tens digit.

Who am I?

72	45	39
41	28	47

