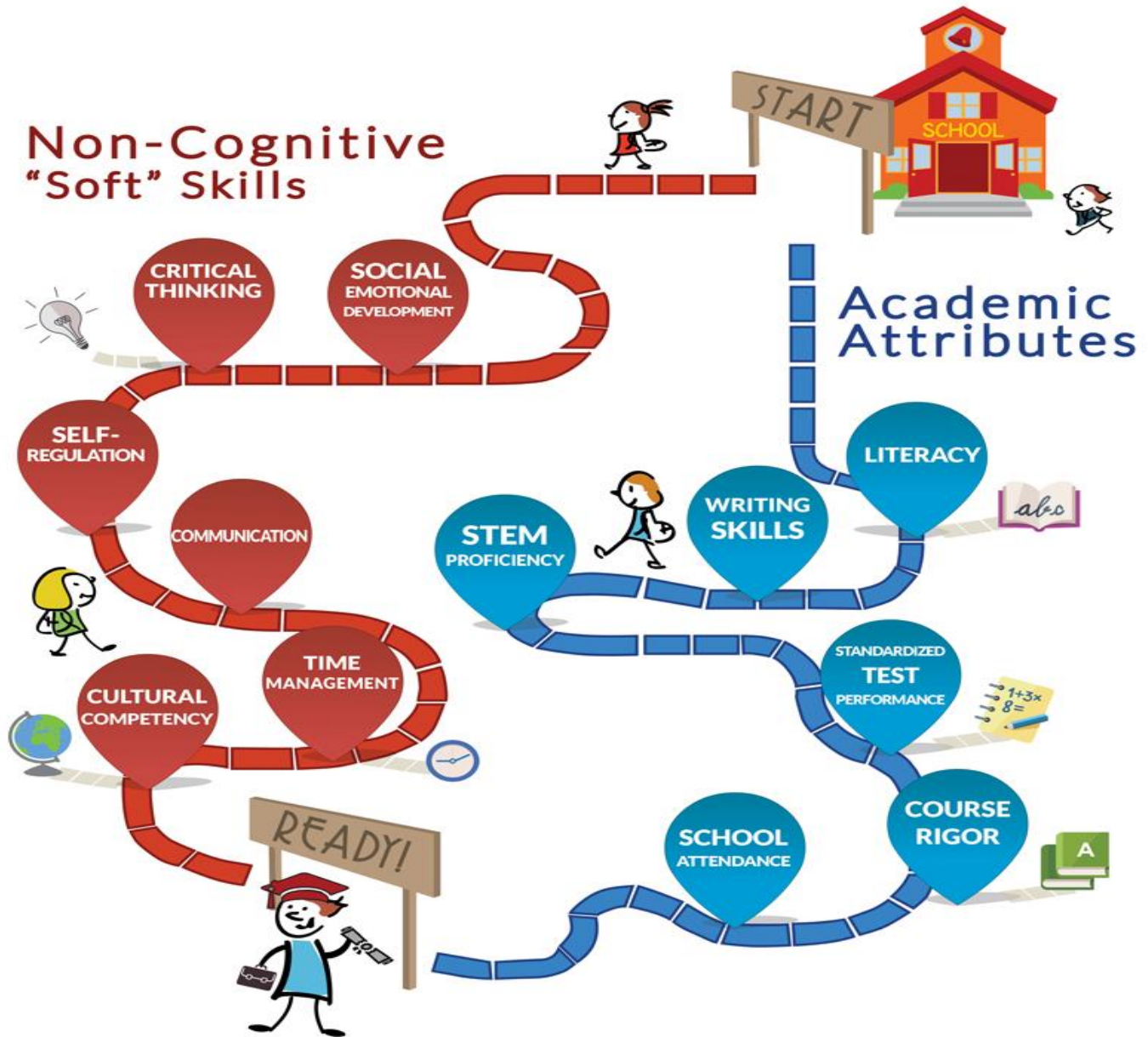


# COLLEGE & CAREER **READY**

“READINESS” is more than just a test score, but a journey our students take throughout their educational career to become productive citizens in today’s global economy.



## Are **YOU** Ready?

### 2019-2020

## Planning Guide

# Table of Contents

## BASIC INFORMATION

Conferences & Course Fair & Scheduling Comments .....	1
Enrollment Dates .....	2
Requirements At-A-Glance Chart .....	3
Qualified Admissions, Kansas-Sponsored Scholarships & NCAA/NAIA, NHS, Top 10%, Weighted Grades.....	4
What is Dual-Credit and AP Credit? .....	5
Courses for Dual Credit or Advanced Placement (AP) Credit .....	6-7
16 Career Clusters Chart and What is CTE?.....	8
Options After High School & Questions You Should Ask Yourself.....	9

## GRADUATION-SPECIFIC COURSES

Communications, Speech, & Theatre Arts.....	10
English/Language Arts Courses .....	11
Math Courses.....	12-13
Science Courses.....	14-15
Science & Health and Bio Sciences (including CNA Block, EMT, early path to nursing, and CMA).....	16
Social Science Courses .....	17
Physical Education/Health Courses.....	18
*World Languages (considered a core, but not specifically required for graduation) .....	18
Instrumental and Vocal Music .....	19
Art Courses .....	20

## CAREER & TECHNICAL EDUCATION/ELECTIVE COURSES

Arts, AV Communications Career Cluster Digital Media Pathway (Broadcast, Newspaper, Yearbook) .....	21-22
Arts, AV Communications Career Cluster Graphic Design Pathway .....	23
Finance Career Cluster Accounting Strand .....	24
Marketing Career Cluster Marketing Pathway.....	25
Engineering Career Cluster Engineering & Applied Mathematics Pathway .....	26
Transportation Career Cluster Automotive Service Technician (WSU Tech Technical Certificate or Associates of Applied Science .....	27
Education and Training Career Cluster Teaching and Training Pathway .....	28
Human Services Career Cluster Early Childhood Development Pathway .....	29
Human Services Career Cluster Family, Consumer, and Community Services Pathway.....	30
Human Services Career Cluster Restaurant & Event Management Pathway .....	31
Human Services Career Cluster Fashion, Apparel and Interior Design Pathway .....	32
Information Technology Career Cluster Networking Systems Pathway.....	33
Information Technology Career Cluster Programming & Software Development Pathway.....	34
Information Technology Career Cluster Web & Digital Communications Pathway .....	35
Law, Public Safety, Corrections & Security Career Cluster Corrections, Security, and Law Enforcement Services Pathway .....	36
Teacher/Office/Library Aide .....	37
Off-Campus (WSU TECH, College Release, Internship/Employment Release) .....	37

## FORMS & APPLICATIONS

College Release Application .....	38
WSU TECH High School Programs, Steps to Enroll & Enrollment Form.....	39-40
Applications for Internship/Work Study & College Release .....	41-42

# Advisement – Course Fair – Course Selection

## FAMILY ENROLLMENT CONFERENCES

February 21 (noon-8 p.m.) and February 22 (7 a.m.- 4 p.m.)

Enrollment is a collaborative effort between you, your family, and your PRIDE teacher! Once again, GHS will host a FAMILY ENROLLMENT CONFERENCE & COURSE FAIR. It is critical that you attend, as this is the PERFECT setting to have all the resources needed to make informed decisions about your future.

### Course Fair:

- Allows you to “walk through” the enrollment guide and “see” what classes are offered. All courses at GHS will have a table set up to help you know more about what each class really is about. Plan to come 20-25 minutes prior to your conference appointment to take the tour.
- The Course Fair will include core classes, elective classes, explanations of CTE Pathways and representatives from concurrent enrollment partners which include, Flint Hills Community College, Newman University, Wichita State University, and WSU Tech.
- It is our goal to have you learn more about what GHS offers than what you can read about in an enrollment guide.
- Counselors and administration will also be available!

### At conferences you will:

- Engage in a one-on-one 30-minute appointment with your PRIDE teacher.
- Receive guidance from your PRIDE teacher to go in the direction you would like to go.
- Receive a “worksheet” that lists all courses that are available for your grade-level as well as courses you've been recommended to take by your current teachers.
- Review your academic standing (transcript, test scores, etc.)
- Guidance through the enrollment process through Career Cruising's COURSE PLANNER and ability to submit your course selections.

### After Conferences & Course Fair:

- An Informational meeting will be held Monday, March 4 to answer any lingering questions and again, allow for guided computer time.
- Students will have through March 6 (PRIORITY DEADLINE) to have discussions with teachers, parents, and counselors.
- **The window to submit your courses will close on March 8.** Students who have not completed enrollment will have schedules built on their behalf by the counselors.

## Please keep in mind...

- You must enroll in the required courses PLUS any courses you did not pass the year before.
- **YOU** must make sure you have the **prerequisite** before attempting to enroll in a class.
- Some courses require a separate application. This will be due on or before March 13.
- Courses listed in the enrollment booklet may not appear on the final SCHEDULE due to low requests for enrollment or other reasons the course could not be offered.
- **Seniors are scheduled first, then juniors, then sophomores, then freshmen and late enrollees last.**
- Each elective will require you to enter an alternate that you would substitute if your first choice will not work with your schedule. It will be a direct substitution, unless it, too will not work. All alternates are considered as options in building your schedule.
- **Schedule change rules and directions for completing your FOUR-YEAR PLAN apply to BOTH primary and alternate courses.**
- **Honors, AP, and college credit courses that require SUMMER WORK will not be dropped because the summer work was not completed. Students are responsible for fulfilling the requirements for the course in which they enroll.**
- Unless designated, no course successfully completed is repeatable.
- Grades for aides will be 'CR' or 'NC' and **do not** calculate into the GPA. **Students may only aide for one hour per semester and cannot aide if in a release program.**

## Schedule Change Policy

A counselor can change your schedule if:

- You are not enrolled in a required class.**
- You enrolled in a class that is not repeatable and you already have credit.**
- You do not meet the prerequisites.**
- Your schedule is incomplete.**
- Your teacher recommends that you take a higher-level or lower level class due to your academic skills.**

In other words... if you COMMIT to the class and are CAPABLE... you are expected to COMPLETE the course.

# January

Monday	Tuesday	Wednesday	Thursday	Friday
<b>21</b>	<b>22</b>	<b>23</b>	<b>24</b>	<b>25</b>
<b>NO SCHOOL</b>	Meeting with JUNIORS (Class of 2020) through US History Rehse 2, 5	GMS Site Counsel 1:30	Meeting with JUNIORS (Class of 2020) through US History Hackerott 1, 2, 3, 4, 5 Lawson 1, 4	Counselors hold individual meetings as needed.
<b>28</b>	<b>29</b>	<b>30</b>	<b>31</b>	<b>FEBRUARY 1</b>
Meeting with SOPHOMORES (Class of 2021) through English 10 Hansard 2, 5, 6 Smith 6, 7	Meeting with SOPHOMORES (Class of 2021) through English 10 Bates 1, 5 Hall 2, 3, 7	Meeting with FRESHMEN (Class of 2022) through English 9 Peery 4, 5, 6	Meeting with FRESHMEN (Class of 2022) through English 9 Bates 4, 7  DEADLINE FOR ACT/WORKKEYS changes	Meeting with FRESHMEN (Class of 2022) through English 9 Hansard 1, 3, 7

# February

<b>4</b>	<b>5</b>	<b>6</b>	<b>7</b>	<b>8</b>
<b>INSERVICE</b> Teachers begin entering 2019-20 Recommendations in SKYWARD	Ambassador Training Part 1 (hours 6, 7)	Counselors hold individual meetings as needed.	Meeting with 8 <sup>th</sup> grade (Class of 2023) through Science	Counselors hold individual meetings as needed. <b>Recommendations in SKYWARD due</b> Office/Library Aide applications due
<b>11</b>	<b>12</b>	<b>13</b>	<b>14</b>	<b>15</b>
Counselors hold individual meetings as needed.	Counselors hold individual meetings as needed.	Counselors hold individual meetings as needed.	Counselors hold individual meetings as needed.	Counselors hold individual meetings as needed.
<b>18</b>	<b>19</b>	<b>20</b>	<b>21</b>	<b>22</b>
Ambassador Training Part 2 (hours 2, 3)  Choir Auditions	Choir Callbacks	7:35-noon ACT @ GHS WorkKeys @ ACA  Noon-3:30 WorkKeys @ ACA	Family Enrollment Conferences & Course Fair 12 p.m.-8 p.m.  Course submission open.	Family Enrollment Conferences & Course Fair 7 a.m.-4 p.m.  Course submission open. Applications for special programs due.

Students may submit course request THROUGH March 6. Submission window closes at midnight.

Below is a chart comparing GODDARD DIPLOMA, QUALIFIED ADMISSION, KANSAS HONOR SCHOLAR & NCAA requirements.

## ***Requirements at a Glance***

<b>Area</b>	<b><i>GHS Graduation</i></b>	<b><i>Qualified Admissions</i></b> <i>minimum GPA 2.0 in these courses</i>	<b><i>Kansas Honor Scholar</i></b>	<b><i>NCAA DI/DII</i></b> <i>minimum GPA 2.3 in these courses</i>
<b>English</b>	4 credits required  any level English 9 any level English 10 any level English 11 any level English 12	4 credits required (regular or honors only)	4 credits required (regular or honors only)	4 credits required any level English 9-12 <b>and/or</b> communications or debate or public speaking, creative writing
<b>Math</b>	3 credits required any level of math	3 credits required Algebra I and higher & score 22 Math ACT <b>OR 4 credits</b> if Math ACT score is below 22	4 credits required Algebra I and higher only	3 credits required Algebra I and higher only  NOTE: Intermediate Algebra will not count.
<b>Science</b>	3 credits required any science course	3 credits required Biology and Chemistry OR Physics <b>PLUS</b> one of the following: Physical Science, Honors Biology II, Chemistry II, Physics, Ecology, Anatomy & Physiology	3 credits required Biology AND Chemistry AND Physics <b>PLUS</b> , strongly encouraged to take an additional upper level science course	2 credits required ALL science courses meet NCAA guidelines
<b>Social Science</b>	3 credits required U.S. History 10, World History, U.S. History, government <b>PLUS</b> either psychology, sociology, LPSS courses or international affairs	3 credits required	3 credits required	2 credits required  NOTE: LPSS courses will NOT count.
<b>Foreign Language</b>	NOT required	*Will count toward 3 credits of electives	2 credits in the same language	Will count toward 16 core credits
<b>Other Courses</b>	0.5 communications (can be communications, debate, competitive acting/speaking, OR public speaking) 1.0 PE, 0.5 health, 1.0 fine arts, <b>PLUS</b> additional courses to equal <b>25</b> total credits	3 credits required (any <b>additional</b> English, math, science, social studies, foreign language, CTE or fine arts course.	No additional requirements	Additional English, math, science social studies or foreign language to equal <b>16</b> total credits

# Most Commonly Asked Questions about Uses for GPA/Class Rank

## Qualified Admissions for ESU, FHSU, KSU, \*KU, PSU, and WSU

For “**direct admission**” to a Kansas Board of Regents’ institution, a 2.0 GPA in the Qualified Admissions Curriculum (see column 2 on previous page) is MANDATORY as well as maintaining a 2.0 GPA in any college credit (dual credit) course(s). Also, in addition to English, math, science, and social studies requirements, 3.0 credits of elective, which may include additional English, math, science, and social studies, plus foreign language, fine arts, computer technology, vocational and career courses, fine arts, journalism and debate. Note that the \***University of Kansas** has **additional** admission requirements (24 ACT **plus** 3.0 unweighted GPA **OR** 21 ACT **plus** 3.25 unweighted GPA). KU also considers high school students with 30 or more college credits as TRANSFER students.

Additionally, graduates **must also**:

- Score a 21 composite or higher on the ACT (OR 980 on the SAT)

**OR**

- Graduate in the upper 1/3 of his/her class.

## Kansas Sponsored Scholarships

The Kansas Scholars Curriculum must be completed only if you wish to compete for the Kansas Ethnic Minority Scholarship, Kansas State Scholarship, and the Kansas Teacher Service Scholarship, and Kansas Math & Science Teaching Scholarship. Go to [www.kansasregents.org](http://www.kansasregents.org) and click on **FINANCIAL AID** to learn more about these programs. Courses that are approved for Kansas Honors Scholar have been labeled **KHS**. In addition, Kansas students who pursue a technical certification may qualify for the Kansas Career & Technical Education Scholarship. Application deadline is May 1 of senior year and is renewable.

## 4-Year College Athletics: Division I /II NCAA & NAIA

1. See course requirements in column 4 on page 8.
2. Register spring of JUNIOR year at [www.ncaa.org](http://www.ncaa.org) and click on **ELIGIBILITY CENTER: Student-Athletes Register Here** for NCAA and/or [www.playnaia.org](http://www.playnaia.org) for NAIA. Also check with your counselor for more information and registration procedures.
3. Note GPA and ACT requirements for NCAA Division I and II and NAIA.
4. NCAA and NAIA will only accept ACT scores directly from the testing service. When registering to take the ACT use “9999” to send ACT scores to NCAA Clearinghouse and “9876” to send to NAIA Clearinghouse.
5. Send your high school transcript to NCAA and/or NAIA through your [www.parchment.com](http://www.parchment.com) account.
6. Courses that are approved for NCAA have been labeled **NCAA**. Summer school courses and courses taken at Goddard Academy (online) are **not** NCAA approved.

## National Honor Society

**Membership Candidacy:** After 4 semesters, students with a 3.5 GPA or higher, will be invited to petition for membership in the GHS National Honor Society. This is typically at the beginning of the junior year. Students who do not qualify may be invited to submit a petition again at the beginning of the senior year.

- Candidates must be involved in three (3) school activities AND at least one (1) community service project.
- Candidates must be law abiding citizens in good standing with the school and community. Character and leadership are both evaluated based on discipline and attendance.
- Candidates must submit a letter of petition, resume, student information form with parent signature, and two (2) letters of recommendation (NOT from GHS staff member).

**Once Petition is Submitted:** Petitions for membership are reviewed by the Faculty Council. Membership candidates are selected based on four membership principles or service, character, leadership and scholarship. Conduct both in and outside of school is considered.

## Senior Academic Awards: Top10%

Seniors in the top 10 % of the class will be recognized for their academic achievements in the following manner. These Honors will be based upon cumulative GPA on the weighted scale.

- **Summa Cum Laude** – highest praise – top 2 percent of the class
- **Magna Cum Laude** – with great praise – next 3 percent of the class
- **Cum Laude** – praise – next 5 percent of the class

Each student’s cumulative GPA will be based solely upon the courses selected by the student throughout his/her high school career. Any high school course or outside credit course taken during the high school career will be a part of the high school transcript and figure into graduation credits as well as calculate into the GPA and class rank. This would include summer driver’s education, any high school course taken while in middle school as well as college credit courses taken outside of the high school day. These honors will be reflected on student diplomas and at the Senior Awards Night in late April or early May. These students will be recognized with a certificate and a medal to indicate their level of excellence.

## Weighted GPA & Rank

- Both regular GPA and Rank in Class AND a weighted GPA are recorded on GHS academic transcripts.
- GPA is a student’s “Grade Point Average.” A GPA is a number calculated using two factors: credits taken and “grade points,” which are awarded to letter grades. GPA is calculated by dividing the total number of grade points by the credits taken. ALL GRADES figure into BOTH SCALES.
- **Grades earned in weighted classes earn an extra grade point.** Therefore, an “A” in a weighted class will yield 5 grade points, while a non-weighted class will yield a possible 4 points.
- Class Rank uses the GPA as a way of organizing students with the highest GPA’s at the top of the list.
- Weighted courses: **\*dual-credit English, speech, math, physical & biological lab sciences, social & political sciences, Spanish; honors courses; AP; and dual-credit Project Lead the Way courses. Additionally, off-campus college credit courses meeting core graduation requirements and WSU Tech block programs taught by WSU Tech instructors are also weighted.**

*\*weighted the dual-credited semester*

# What is DUAL Credit?

Students in grades 9-12 will take the courses at GHS for high school credit and if they would like to earn college credit, work with the high school counselor and admissions personnel to ensure he or she meets requirements (see GPA requirements below), has applied for admission to the college, and enrolls for the correct Newman, Wichita State University, Flint Hills Technical College, or WSU Tech class. These courses transfer to most state schools in and outside of Kansas, with very few exceptions in the last 15 years. Credits may not transfer to some highly selective schools or military academies, or if a low grade is earned. Check individually with each school you would like the credit to transfer.

## Newman University Requirements

- High school cumulative 3.0 GPA by the semester of enrollment
- Maintain a college cumulative 2.0 GPA for any courses taken (Kansas Board of Regents institutions require a 2.0 in college credit courses as a part of admission),
- ACT English score of 20 or SAT Verbal score of 460 to enroll in English 101 on file by July 1 to meet qualifications for English 101.

## WSU Tech Requirements

- **Courses with tuition** - high school cumulative 3.0 GPA by the semester of enrollment or a 2.8-2.99 with parental permission.
- **Free Courses** - a 2.0 GPA by the semester of enrollment.
- **For BOTH** - maintain a college cumulative 2.0 GPA for any courses taken (Kansas Board of Regents institutions require a 2.0 in college credit courses as

## a part of admission). **Wichita State University Requirements**

- High school cumulative 3.0 GPA by the semester of enrollment OR parent completes an EXCEPTION form.
- Maintain a college cumulative 2.0 GPA for any courses taken (Kansas Board of Regents institutions require a 2.0 in college credit courses as a part of admission)n.

## Flint Hills Technical College Requirements

- Maintain a college cumulative 2.0 GPA for any courses taken (Kansas Board of Regents institutions require a 2.0 in college credit courses as a part of admission).

# Classes for Advanced Placement (AP) Credit

Advanced Placement (AP) courses use a national collegiate curriculum designed to prepare students to take AP exams. AP students will register to take the National AP exam in February and will take the exam in May. Scores of 3-5 typically will earn a student credit at the receiving college or university. **Credit transferability:** Accepted by almost all US colleges & universities including highly selective schools. Credit reflected on the transcript varies by institution and is determined by a score of 3, 4, or 5 on the AP exam. Credit hours vary and may be shown on the receiving school transcript as a letter grade, credit or placement in the next course in sequence.

## Applying for Admission:

Each college will require the student to apply for admission (one time only). The counselors will work with the students to assist them in the application process before the school year ends in May or in the first few weeks of the semester the course is eligible for college credit.

- Wichita State University requires a **one-time** \$25 application fee for the first PLTW course and a \$40 application fee for all other dual-credit courses.

## Enrolling for College Credit:

Each college will have forms required for **each semester** the credit is available (ex. Honors English 12 will enroll in August AND January).

## Tuition:

If tuition is required, payment information will be given at the time of the COLLEGE enrollment.

- AP courses register and pay the testing fee in February.
- See chart for approximate cost per credit/course.

Contact Michelle Murray-Cline ([mmurray.cline@goddardusd.com](mailto:mmurray.cline@goddardusd.com)) if you have questions about taking these courses for college credit. NOTE: The COLLEGE enrollment process takes place after the start of each semester. Look for email notifications and the GHS calendar for additional information.

# Courses Eligible for Dual Credit &/or AP Credit

Below is a list of high school classes that are aligned with either Newman University, WSU Tech, Wichita State University, and Flint Hills Technical College. Except for Intro to Engineering Design and AP courses, a student MUST be at least a sophomore to be eligible for college credit.

## English & Speech – Newman University

GHS Course Name	College Course Code (1 <sup>st</sup> semester)	Credit Hours & Tuition or Test Fee	College Course Code (2 <sup>nd</sup> semester)	Credit Hours & Tuition or Test Fee	College Course Title
Honors English 12	ENGL 1003	(3) x \$75 = \$201	ENGL 1013	(3) x \$75 = \$225	English 101/102
Public Speaking	COMM 1013	(3) x \$75 = \$225	Offered again	same	Public Speaking

## Mathematics – Newman University

GHS Course Name	College Course Code (1 <sup>st</sup> semester)	Credit Hours & Tuition or Test Fee	College Course Code (2 <sup>nd</sup> semester)	Credit Hours & Tuition or Test Fee	College Course Title
College Algebra with Review	1st semester = high school credit only. Must earn A or B 1st semester to dual enroll 2nd semester.		MATH 1043	(3) x \$75 = \$225	College Algebra
Pre-Calculus	MATH 1043	(3) x \$75 = \$225	MATH 1053	(3) x \$75 = \$225	College Algebra & College Trigonometry
AP Statistics				(3) EXAM = \$100	Statistics
AP Calculus	1st semester = high school credit only. Must earn A or B 1st semester to dual enroll 2nd semester.		MATH 2015	(5) x \$75 = \$375 and/or (5) EXAM = \$100	Calculus I

## Physical & Biological Lab Sciences – Newman University

GHS Course Name	College Course Code (1 <sup>st</sup> semester)	Credit Hours & Tuition or Test Fee	College Course Code (2 <sup>nd</sup> semester)	Credit Hours & Tuition or Test Fee	College Course Title
Anatomy/Physiology	BIOL 2032 + BIOLAB 2031	(3) x \$75 = \$225	BIOL2052 + BIOLAB 2051	(3) x \$75 = \$225	Human Anatomy & Physiology
Honors Chemistry II	1st semester = high school credit only. Must earn A or B 1st semester to dual enroll 2nd semester		CHEM 1013+ CHEMLAB 1012	(5) x \$75 = \$375	General Chemistry I
Honors Chemistry III	1st semester = high school credit only. Must earn A or B 1st semester to dual enroll 2nd semester		CHEM 1023+ CHEMLAB 1022	(5) x \$75 = \$375 and/or (5) EXAM = \$100	General Chemistry II

## Social & Political Sciences – Newman University & \*WSU Tech

GHS Course Name	College Course Code (1 <sup>st</sup> semester)	Credit Hours & Tuition or Test Fee	College Course Code (2 <sup>nd</sup> semester)	Credit Hours & Tuition or Test Fee	College Course Title
AP U.S. History				(3) EXAM = \$100	US History
Honors Government	POLISCI 1003	(3) X \$75 = \$225	Offered again	same	American Government
Psychology	PSY101	(3) x \$69 = \$207	Offered again	same	General Psychology

## Fine Art – WSU Tech

GHS Course Name	College Course Code (1 <sup>st</sup> semester)	Credit Hours & Tuition or Test Fee	College Course Code (2 <sup>nd</sup> semester)	Credit Hours & Tuition or Test Fee	College Course Title
Essentials of Fashion, Apparel & Interior Design	INT 101	(2) = no cost	Offered again	same	Interior Design Fundamentals
AP Studio Art				PORTFOLIO = \$100	Fine Arts Elective

## Spanish – Newman University

GHS Course Name	College Course Code (1 <sup>st</sup> semester)	Credit Hours & Tuition or Test Fee	College Course Code (2 <sup>nd</sup> semester)	Credit Hours & Tuition or Test Fee	College Course Title
Spanish III	1st semester = high school credit only. Must earn A or B 1st semester to dual enroll 2nd semester.		SPAN 2014	(5) x \$75 = \$375	Intermediate Spanish

# More Courses Eligible for Dual Credit &/or AP Credit

## Engineering & Computer Science – Wichita State University (Project Lead the Way)

GHS Course Name	College Course Code (1 <sup>st</sup> semester)	Credit Hours & Tuition or Test Fee	College Course Code (2 <sup>nd</sup> semester)	Credit Hours & Tuition or Test Fee	College Course Title
Intro to Engineering Design	IME 222	(3) X \$50 = \$150 + one-time application fee \$25			Engineering Graphics
Digital Electronics	CS 194	(4) x \$50 = \$200			Digital Electronics
Engineering Design & Development	ENGR 101	(3) X \$50 = \$150			
AP Computer Science				(5) EXAM = \$100	Intro to Computer Science

## Police Science – WSU Tech

GHS Course Name	College Course Code (1 <sup>st</sup> semester)	Credit Hours & Tuition or Test Fee	College Course Code (2 <sup>nd</sup> semester)	Credit Hours & Tuition or Test Fee	College Course Title
Law Enforcement I	1st semester = high school credit only. Must earn A or B (or C with approval) 1st semester to dual enroll 2nd semester		CRJ 125	(3) = no cost	Law Enforcement Operations & Procedures
Law Enforcement II	1st semester = high school credit only. Must earn A or B (or C with approval) 1st semester to dual enroll 2nd semester		CRJ 130	(3) = no cost	Criminal Procedures
Forensic Science Comprehensive	1st semester = high school credit only. Must earn A or B (or C with approval) 1st semester to dual enroll 2nd semester		CRJ 105	(3) = no cost	Criminal Investigation

## Business – WSU Tech

GHS Course Name	College Course Code (1 <sup>st</sup> semester)	Credit Hours & Tuition or Test Fee	College Course Code (2 <sup>nd</sup> semester)	Credit Hours & Tuition or Test Fee	College Course Title
Accounting I	ACC 105	(3) = no cost	ACC 160	(3) = no cost	Foundations & Principles of Accounting I
Entrepreneurship	ENT110	(3) x \$69= \$207	Offered again	same	Intro. to Entrepreneurship

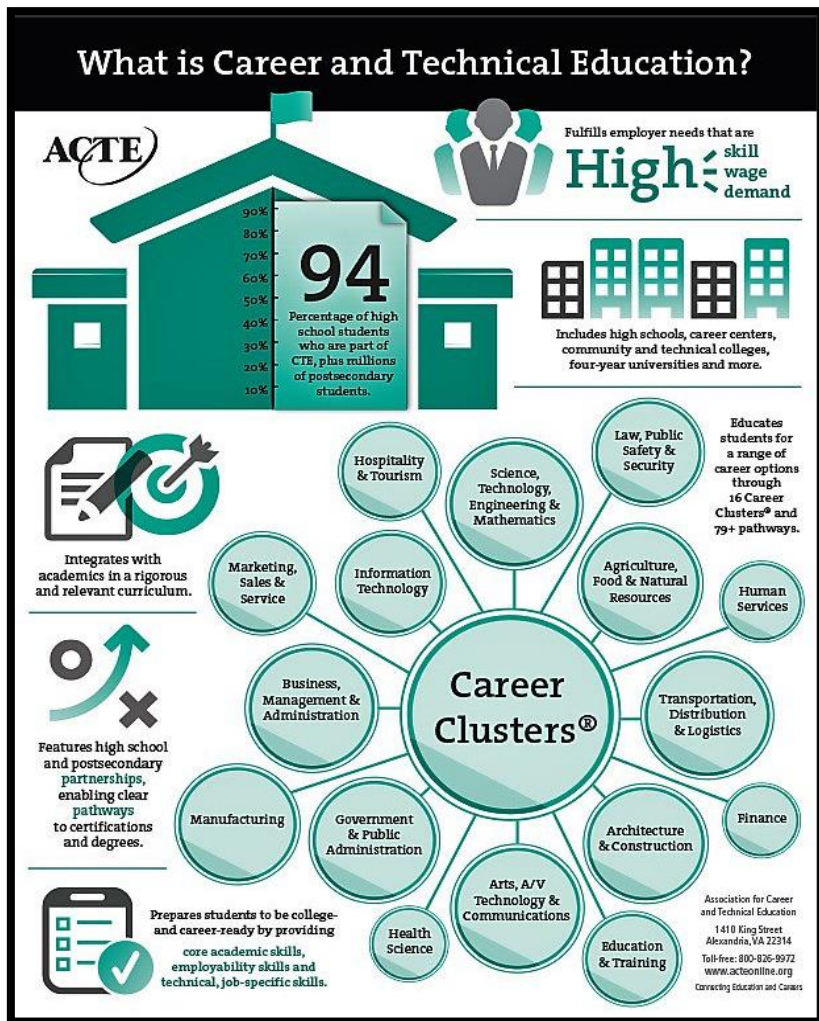
## Culinary – Flint Hills Community College

GHS Course Name	College Course Code (1 <sup>st</sup> semester)	Credit Hours & Tuition or Test Fee	College Course Code (2 <sup>nd</sup> semester)	Credit Hours & Tuition or Test Fee	College Course Title
Culinary I	HCA 104	(3) = no cost			Culinary Techniques & Theory

## Teaching & Education – Wichita State University

GHS Course Name	College Course Code (1 <sup>st</sup> semester)	Credit Hours & Tuition or Test Fee	College Course Code (2 <sup>nd</sup> semester)	Credit Hours & Tuition or Test Fee	College Course Title
Human Growth & Family Studies	CESP 334	(3) = \$100	Offered again	same	Introduction to Diversity: Human Growth & Development
Teaching as a Career	1st semester = high school credit only. Must earn A or B 1st semester to dual enroll 2nd semester		CI 270	(3) = \$100	Introduction to Teaching
Teaching Observation & Teaching Internship	1st semester is Teaching Observation 2nd semester is Teaching Internship		CI 320	(2) = \$100	Introduction to Diversity: Exceptionalities

# What is Career & Technical Education?



Taking CTE courses in high school can lead to FREE COLLEGE CREDIT and/or ADVANCED PLACEMENT in Kansas community colleges & universities. The best reason to take CTE courses is to “test drive” a career area and have **PRACTICAL/HANDS-ON experience in addition to the “book knowledge”** before heading off that career after high school.

**These course descriptions and organizational charts are listed on pages 20-25.**

## What Do the Levels Mean?

**INTRODUCTORY COURSES** are beginning classes designed to “introduce you” to the general idea and theories of the pathway. Time will be spent exploring what direction you can go if you want to learn more.

**TECHNICAL COURSES** are the next level and designed to allow some technical application of your knowledge. These courses are more specific in content.

**APPLICATION COURSES** allow you to APPLY your knowledge in real life or simulations. Many of the application courses encourage INTERNSHIP and/or WORK experiences in the field.

## HOW DO I GET COLLEGE CREDIT?

1. Some courses are **technical skill DUAL-CREDIT**. Just by taking the high school course, you can receive **FREE** college credit from WSU Tech. The grade you earn in the high school course = the grade you will post on your WSU Tech transcript. (i.e. Accounting I). **See page 5-6 for a listing.**
2. Other courses are **general education DUAL-CREDIT**. Students would pay a reduced-tuition rate and receive college credit from Wichita Area Technical College. (i.e. entrepreneurship). **See page 5-6 for a listing.**
3. Each participating college has an “Articulated Agreement” with Kansas high schools. Most are published on the KSDE website, but some institutions have individual agreements with high schools (i.e. Butler CC and Pratt CC). To earn college credit, students would need take a series of CTE courses in one or more pathways, and complete other requirements (i.e. internship hours, pay a fee, take a test, declare a major in that area at the receiving college) to receive the credit. **Go to [www.ksde.org](http://www.ksde.org) and search [STATEWIDE ARTICULATION AGREEMENT CHART](#), or to see the latest information see your CTE instructor(s).**

# What are my options after high school?

- 4-year colleges & universities
- 2-year community colleges
- Technical colleges
- Apprenticeships
- Certificate programs
- Military
- Employment
- Gap year experiences

You can explore; acquire skills; earn certifications; and college credit prior to graduating from high school. Planning, acting, and continuing to reevaluate yourself and your goals is key to success and preparation for what lies ahead after graduation. Here are some questions to help guide your decisions:

What is the HIGHEST level of coursework in each area I would like to achieve? Can be a different level for each area (i.e. math = higher level and English = regular level).

What do I need to do to transition from high school to the “next level”?

How can I grow in terms of leadership, communication, teamwork and work ethic skills while in high school through a combination of coursework and extracurricular activities?

Have I made sure I am meeting requirements for selective programs?

- NCAA OR NAIA (see **page 9** and go to [www.ncaa.org](http://www.ncaa.org) and/or [www.playnaia.org](http://www.playnaia.org))
- CAREER PATHWAY CERTIFICATIONS (see **pages 20-33**)
- KANSAS QUALIFIED ADMISSIONS (see **pages 8-9** or go to [www.kansasregents.org](http://www.kansasregents.org))
- OUT-OF-STATE SCHOOLS (go to individual university websites)
- SELECTIVE ADMISSIONS (go to individual university websites)
- TECHNICAL PROGRAMS (for Kansas go to [www.kansasregents.org](http://www.kansasregents.org) and search technical programs)
- MILITARY (ROTC, SERVICE ACADEMIES, ETC) (contact area recruiters and/or go to [www.gomilitary.com](http://www.gomilitary.com))
- APPRENTICESHIP PROGRAMS (for Kansas go to [www.kansasapprenticeship.org](http://www.kansasapprenticeship.org))

What do my results from various career inventories (i.e. Do What You Are, Career Cruising, ACT World of Work, & ASVAB) seem to say?

- Have I considered my test scores? ACT Aspire, ACT, ACCUPLACER, ASVAB?
- Have I met with my counselor to explore all my options?
- Have I read ALL the course descriptions, and do I understand what will be expected from me in the courses I choose?
- Do I want to begin taking classes at GHS for college credit (dual-credit) and/or earn certifications (CTE)?
- Do I want to be RELEASED from GHS to take college credit and/or do an internship and/or work, and/or pursue certifications/college credit through WSU TECH?

# Communications

**A minimum of ONE course (1/2 credit) is REQUIRED for graduation.**

## 1700 Communications (9-12) 0.5 credit

### Qualified Admissions & NCAA

Students will study intrapersonal and interpersonal communications, speaking skills, and critical writing thinking skills. Through surveys, problem solving techniques, class lecture and discussion, the students develop their communications abilities as they work to understand themselves and their communications with others. Basic speaking skills covered include presenting demonstration, informative, persuasive, impromptu speeches, and group presentations.

**NOTE: As a 10-12 grade student you may take PUBLIC SPEAKING, which is a COLLEGE CREDIT VERSION of this course if you have a cumulative GPA of 3.0.**

## 1701 Debate (9-12) 0.5 credit

### Qualified Admissions & NCAA

Often thought of as ideal for the person who loves to argue, debate will hone your researching, reasoning and speaking skills while allowing you to apply all subject areas into a structured format of intellectual discussion. In addition to utilizing speaking, listening and reasoning skills, students of debate will learn to attack and defend a position on both sides of an issue by being adequately prepared with evidence and theory. Passing five classes in the prior semester, competition and after school lab sessions required. **PREREQUISITE: English teacher recommendation, application and interview and instructor consent.**

## 1702 Debate II (10-12) 0.5 credit

Designed for the debater with one or more years of experience. While polishing debating skills students are acquiring a higher level of theoretical understanding through more complex case structures, debate theory and

evidence. In addition to learning more advanced technique. Students will crystallize and apply their skills to offer advice to beginning debaters.

**Competition and after school lab sessions are required. (repeatable)**  
**PREREQUISITE: Debate I and instructor consent.**

## 1703 Competitive Acting & Speaking (9-12) 0.5 credit

### Qualified Admission

**(Formerly FORENSICS)** Instructs the student on the basics of all forensic competitive events. The student will prepare presentations in the various forensic areas of performance, interpretation, and speaking events. Passing requirements for this course include required weekly 30-minute after school lab practices and competing in a minimum of four full-day Saturday contests during the forensics season. In addition, students will learn how to use communications skills to benefit in school and the community. **This course counts as FINE ARTS if taken in addition to either communications, public speaking or debate.** (repeatable) **PREREQUISITE: Academic eligibility and instructor consent.**

## 1716 Public Speaking (10-12) 0.5 credits

### Qualified Admissions, NCAA, DC - Newman University

In this semester course, students will learn how to speak in several different formats, refine research skills, and speak in small groups. **This semester course is the equivalent of Newman University's Public Speaking (COMM 1013) course work. Students interested in dual college credit must have a 3.0 cumulative GPA. Sophomores with English teacher consent.**

# Theatre Arts

**A minimum of ONE FINE ART (1 credit) is REQUIRED for graduation.**

**More FINE ART options found in the Art, Instrumental Music, and Vocal Music courses.**

## 1804 Technical Theatre (9-12) 0.5 credit

The class is designed to introduce students to the technical aspects of play production. You will learn about different stages and the various opportunities in technical theatre. Students will learn vocabulary, tools, theatrical construction techniques, painting skills, and the principles of design. Students will participate in lab exercises a few times during the semester where they will gain hands on experience. **No previous theatre experience required.**

## 1806/1807 Theatre Arts I (9-12) 1.0 credit

This class is the introduction course to the theater program. In this class you will learn about the history of theatre, theatre terminology, stage movement, character development, acting techniques, theatre stage safety, technical theatre skills and management skills, as well as skills that will help you grow in the art of theatre and life.

## 1816/1817 Musical Dance (9-12) 1.0 credit

Musical Theatre Dance is a course that focuses on coordination, balance, timing, and performance. Students will learn basic dance techniques and different styles of dance commonly used in musical theatre performances. This class emphasizes technique and stage presence in addition to partner work. Students will warm up and stretch, rehearse new dance steps which will be combined into choreographed dances, improve their technique and create their own choreography. (repeatable)

## 1812/1813 Musical Theatre (10-12) 1.0 credit

**The Dance Element** focuses on coordination, balance, timing, and performance. Students will learn basic dance techniques and different styles of dance commonly used in musical theatre performances. This class emphasizes technique and stage presence in addition to partner work. Students will warm-up and stretch, rehearse new dance steps which will be combined into choreographed dances, improve their technique and create their own choreography. **The Vocal Element** focuses on developing the voice, improving vocal technique, and performance. Students will be exposed to many styles of singing used in musical theatre performances. Students will learn to sing solo

and chorus roles, preparing them to be successful in a musical theatre production. Each semester would close with a Revue Show highlighting both the vocal and dance elements. In addition, students would be able to prepare vocal and dance selections to be used for college auditions and develop a professional resume. (repeatable) **PREREQUISITE: Previous or concurrent enrollment in a high school theatre arts or choir course.**

## 1810/1811 Advanced Acting Repertory (10-12) 1.0 credit

In this class, focus is on performance, improvisation, scene study, script writing and production work. The class is offered in the fall & spring to upper classman and focuses on putting together theatrical productions. Rehearsal time will be required in class and after school within three weeks of production dates. (repeatable) **PREREQUISITE: Instructor consent through audition.**

## 1802/1803 Advanced Directing (10-12) 1.0 credit

Students will learn the techniques, organizational skills and creative approaches necessary to produce effective theater work. The curriculum of this class promotes leadership, confidence, and motivation. Students will conduct auditions, run rehearsals, and direct a cast for a public production of a one-act play they will select and prepare. (repeatable) **PREREQUISITE: Theatre Arts I and instructor consent.**

## 1805A and/or 1805B Stagecraft (10-12) 0.5 credit

The class is designed to allow students an in-depth experience with the technical aspects of play production. You will complete theatrical construction, costuming, stage lighting, sound design and basic board operation. Students will work with tools and apply various carpentry skills. Students will also apply painting skills and techniques as well as costuming and make up skills. Teamwork, leadership, and creativity are emphasized. Students will have the opportunity to design for the productions and work on portfolios. (repeatable) **PREREQUISITE: Technical Theatre, Theatre Arts I and/or theatre instructor consent.**

# English – Language Arts

**English 9, 10, 11, 12 are REQUIRED for graduation.**

**Honors English courses require instructor consent;  
strongly recommend Ready or Exceeding Reading, English, and Writing ACT ASPIRE scores;  
and completion of summer assignments.**

## **1920 or 1921 Reading Lab (9-10) 0.5 credit**

Semester course designed to complement the required English curriculum and increase reading comprehension, vocabulary recognition, and Lexile range. **PREREQUISITE: Recommendation based on ACT Aspire score indicating NEEDS ASSISTANCE or other standardized indicators.**

## **1000/1001 English 9 1.0 credit**

### **Qualified Admissions, NCAA, KHS**

Focus on study skills, grammar skills, and writing, parts of speech, sentence structure, sentence variety, and apply these skills to numerous writing experiences including poetry, paragraphs, essays, themes, and compositions are covered. Literature units include vocabulary and study of literary terms in poetry, short stories, mythology, Shakespeare, novels and nonfiction. Composition is stressed the entire year with students moving from basic and advanced sentence patterns through paragraph forms, creative writing, to the essay format. The writing of topic sentences and paragraphs on essay exams is included.

## **1008/1009 Honors English 9 1.0 credit**

### **Qualified Admissions, NCAA, KHS, Weighted GPA**

This course is designed to challenge students who have demonstrated above-average skills in language arts. Focus will be on study skills, grammar, and short stories as well as Romeo & Juliet, The Odyssey and mythology, and at least one novel. Students will write themes, compositions, and essays. Vocabulary studies, book reports, and creative writing will also be included. Students will participate in independent studies and activities based on their interests and time available.

**PREREQUISITE: 1) ASPIRE (Ready or Exceeds) English, reading, writing and 2) English teacher recommendation and 3) semester grade of A in English 8. REQUIRED SUMMER READING PROJECT (announced in May).**

## **1100/1101 English 10 1.0 credit**

### **Qualified Admissions, NCAA, KHS**

Focus will be on primarily modern writers, with emphasis on learning to deal with material independently and in some depth. Students will write a variety of essays; complete a research project and an annotated bibliography; continue study of grammar and composition.

**PREREQUISITE: English 9.**

## **1108/1109 Honors English 10 1.0 credit**

### **Qualified Admissions, NCAA, KHS, Weighted GPA**

This course includes primarily modern writers, with emphasis on independent learning and study. Students will learn to write the literary analysis; they will complete a research project and an annotated bibliography; they will continue study of grammar and composition. Honors English 10 will include more sophisticated literature choices (including world literature) and more complex composition types.

**PREREQUISITE: Semester grade of A in English 9 or semester grade of C (or better) in Honors English 9, teacher recommendation and REQUIRED SUMMER READING PROJECT (announced in May).**

## **1200/1201 English 11 1.0 Credit**

### **Qualified Admissions, NCAA, KHS**

Designed to develop self-expression, communication abilities, logical thought processes and to prepare students for college or the working world. This class also studies the development and history of American Literature and ideas from the Puritans to the present time. The student will write papers and take essay examinations. A three- to five- page research paper with an annotated bibliography is required.

**PREREQUISITE: English 10.**

## **1208/1209 Honors English 11 1.0 credit**

### **Qualified Admissions, NCAA, KHS, Weighted GPA**

Includes an overview of American Literature and emphasis on various essay types and will include more sophisticated composition choices and more complex composition types. Students will write some studies of literature; a four- to six- page research paper with an annotated bibliography is required.

**PREREQUISITE: 1) ASPIRE (Ready or Exceeds) English, reading, writing and; 2) English teacher recommendation and; 3) semester grade of A in English 10. REQUIRED SUMMER READING PROJECT (announced in May).**

## **1300/1301 English 12 1.0 Credit**

### **Qualified Admissions, NCAA, KHS**

Designed to develop self-expression, communication abilities, logical thought processes and to prepare students for college or the working world. This class also studies the development and history of British and world literature. The student will write papers and take essay examinations. A research paper is required for completion of the course.

**PREREQUISITE: English 11.**

## **1308/1309 Honors English 12 1.0 credit**

### **Qualified Admissions, NCAA, KHS, Weighted GPA, DC - Newman University**

Students will read literary classics and will learn to interpret works critically. Students will also do a variety of writing projects, which meet the requirements for English 101 and 102. Contact Ms. Hall at khall@goddardusd.com if you do not receive the assignment prior to the end of school. **PREREQUISITE: Cumulative 6-semester GPA of 3.0, English ACT score of 20 by July ACT, semester grade of A in English 11 or semester grade of C (or better) in Honors English 11, teacher recommendation and REQUIRED SUMMER READING PROJECT (announced in May)**

## **1410 Creative Writing I (9-12) 0.5 credit**

### **Qualified Admissions, NCAA**

Creative Writing I, incorporates free-writing personal responses, as well as structured writing of plays, stories, and poetry. Whether you are an experienced writer or a beginner, this is an opportunity to write with the focus on creativity. (repeatable with instructor consent)

## **1501 Humanities (11-12) 0.5 credit**

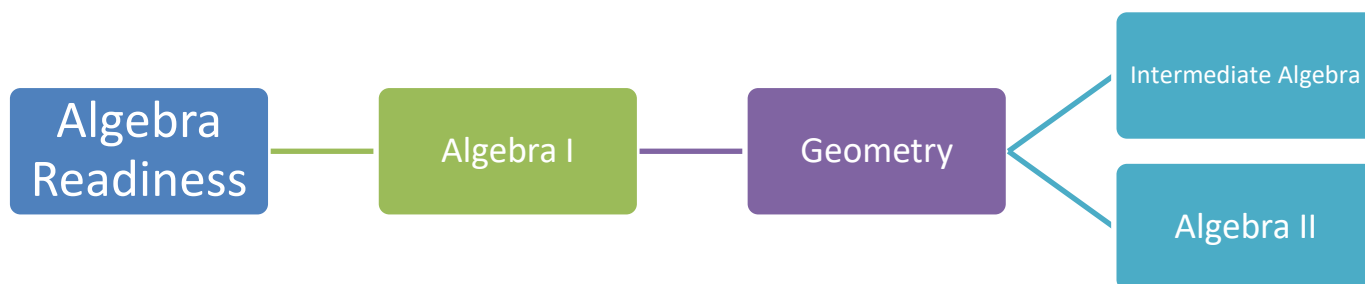
### **Qualified Admissions, NCAA**

Traces the development of those civilizations that have had an impact on modern Western culture. Through lecture and research, students will learn about Egyptian, Greek, Roman, Medieval, and Renaissance life. Students will gain an understanding of his own cultural past as well as providing the knowledge base needed for many college English and history courses.

# Mathematics

Three credits of MATH are REQUIRED for graduation.

Minimal College and Career Ready math skills include Algebra I and II plus Geometry.



## 2002/2003 Algebra Readiness (9-10) 1.0 credit

Review of basic math operations will be followed by introductory algebra concepts. Successful completion of this course will enable a student to take Algebra I. **NOTE: This course is recommended for students with an ACT Aspire level of Needs Assistance or Close. PREREQUISITE: \*Teacher recommendation.**

## 2100/2101 Algebra I (9-12) 1.0 credit Qualified Admissions, NCAA, KHS

Algebra I is the beginning high school mathematics course in the Algebra I-Geometry-Algebra 2 sequence. It is designed to lay the mathematical foundation needed to assist students in the preparation for geometry and advanced algebra topics. This course will include a study of: (1) positive and negative numbers, (2) solving linear equations, (3) solving linear inequalities, (4) graphs and functions, (5) systems of equations and inequalities, (6) exponents, (7) polynomials and factoring, (8) quadratic functions, (9) radical expressions, and (10) rational expressions. **NOTE: This course is recommended for students with an ACT Aspire level of Ready. PREREQUISITE: \*Teacher recommendation and graphing calculator (TI-84CE).**

## 2200/2201 Geometry (9-12) 1.0 credit Qualified Admissions, NCAA, KHS

Geometry introduces the study of points, segments, triangles, polygons, circles, solid figures, and their associated relationships as a mathematical system. Powers of abstract reasoning, spatial visualization and logical reasoning patterns are improved through this course. Points, segments, triangles, polygons, circles, and solid figures are the structures studied. The focus is on comparisons between these figures concerning surface areas, volumes, congruency, similarity, transformations, and coordinated Geometry. Algebra I skills are used throughout the course. **PREREQUISITE: Successful completion of Algebra I, \*teacher recommendation and graphing calculator (TI-84CE).**

## 2204/2205 Honors Geometry (9-12) 1.0 credit

### Qualified Admissions, NCAA, KHS, Weighted GPA

Rigorous and face-paced, this course is designed for the highly motivated math student and will include the study of the properties and concepts associated with various plane figures and apply these properties to three-dimensional space. Inductive and deductive reasoning and formal proofs as well as applications will be emphasized. **PREREQUISITE: Above-average performance in Algebra I, \*teacher recommendation, and graphing calculator (TI-84CE).**

## 2102/2103 Algebra II (9-12) 1.0 credit Qualified Admissions, NCAA, KHS

This course is designed to build on algebraic and geometric concepts. It develops advanced algebraic skills such as systems of equations, advanced polynomials, imaginary and complex numbers, quadratics, exponential and logarithmic functions, the study of conic sections, and introduction to statistics. The contents of this course are important for students' success on both the ACT and college mathematics entrance exams. **PREREQUISITE: Successful completion of Geometry, \*teacher recommendation, and graphing calculator (TI-84CE).**

## 2104/2105 Honors Algebra II (9-12) 1.0 credit Qualified Admissions, NCAA, KHS, Weighted GPA

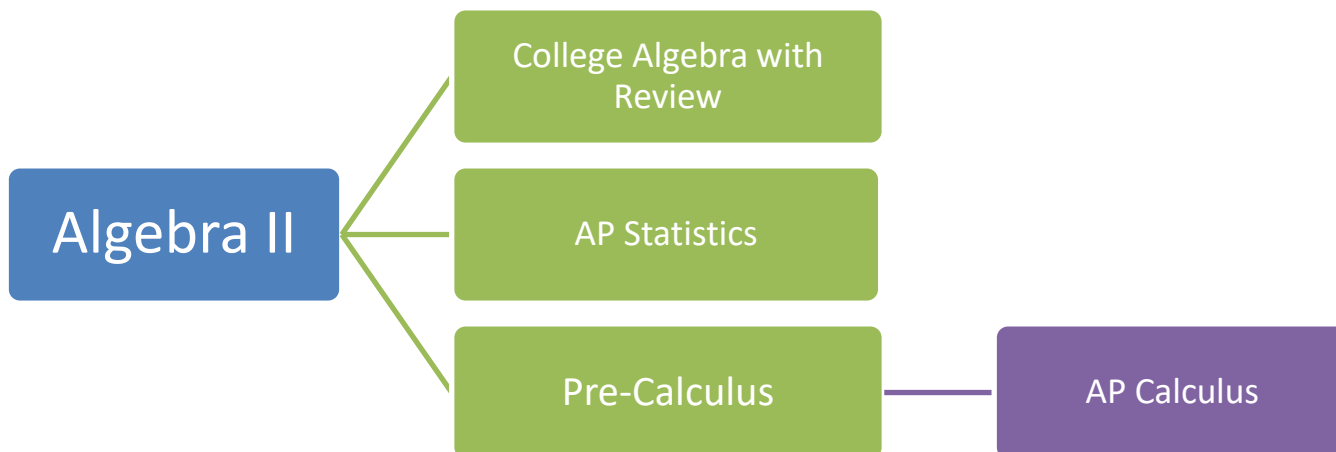
Developed for the highly motivated student with high math expectations. A continuation of the skills learned in Algebra I with an in-depth study of graphs and their functional equations, logarithms, and conic sections. High emphasis is placed on solving higher order polynomials, higher order systems of equations and manipulation of various polynomial expressions with elementary statistics. **NOTE: This course is recommended for students with an ACT Aspire or ACT level of Ready. PREREQUISITE: Above-average performance in geometry, \*teacher recommendation, and graphing calculator (TI-84CE). Summer math packet completion required by the first day of class.**

## 2110/2111 Intermediate Algebra (11-12) 1.0 credit

In-depth study of the concepts learned in Algebra I. Content also includes: solving of higher degree equations, logarithms, determinants, binomial expansion, and a brief introduction to trigonometry and statistics. **NOTE: This course is recommended for students who earned less than an A or B in Algebra I and Geometry. PREREQUISITE: Successful completion of Geometry, \*teacher recommendation, and graphing calculator (TI-84CE).**

# Mathematics

Upon completion of Algebra II additional math preparation and college credit is available.



**If you are pursuing a technical college, two-year college, or university, make sure you know the math preparation or requirements for your program.**

**2410/2411**

**AP Statistics (10-12) 1.0 credit**

**Qualified Admissions, NCAA, KHS, Weighted GPA,**

**Advanced Placement**

The purpose of the AP course in statistics is to introduce students to the major concepts and tools for collecting, analyzing, and drawing conclusions from data. Students are exposed to four broad conceptual themes: 1) Exploring Data: Describing patterns and departures from patterns 2) Sampling and Experimentation: Planning and conducting a study 3) Anticipating Patterns: Exploring random phenomena using probability and simulation 4) Statistical Inference: Estimating population parameters and testing hypotheses. Upon completion of this course, students will have the opportunity to take an AP test for college credit, transferable to university, with a score of 3 or more (on a 5-point scale). **PREREQUISITE: Above-average performance in Algebra II, \*teacher recommendation, and graphing calculator (TI-84CE).**

**2106/2107 College Algebra with Review (12) 1.0 credit**

**Qualified Admissions, NCAA, KHS, DC - Newman**

**University**

College Algebra with Review (Algebra III) course will enhance the problem-solving skills developed in Algebra 2 through a more in-depth study of algebra concepts. This course is a study of polynomial, rational, exponential, and logarithmic functions and their graphs; complex numbers, systems of equations and inequalities, and an introduction to matrices and determinants. Additionally, there is a strong focus on math ACT preparation for the first 8 weeks of the course. This course is intended for college-bound seniors in need of an additional math credit and/or who need an alternative to Pre-Calculus. Students earning an A or B 1<sup>st</sup> semester and who have a 3.0 cumulative GPA can choose to enroll for College Algebra credit through Newman University for 2<sup>nd</sup> semester. A graphing calculator is REQUIRED for this course (Suggested model (TI-84CE).

**PREREQUISITE: Successful completion of Algebra II, \*teacher recommendation, ACT or ASPIRE math score BELOW 22, and graphing calculator (TI-84CE).**

**2300/2301 Pre-Calculus (11-12) 1.0 credit**

**Qualified Admissions, NCAA, KHS, Weighted GPA, DC - Newman University**

The study of the relation between the angles and sides of a triangle. Analytic Geometry consists of applying the methods of Algebra to geometry. Both trigonometry and analytic geometry are essential for advanced study in math or science. **PREREQUISITE: Above-average performance in Algebra II, \*teacher recommendation, ACT or ASPIRE math score ABOVE 22, and graphing calculator (TI-84CE).**

**2404/2405 AP Calculus (10-12) 1.0 credit**

**Qualified Admissions, NCAA, KHS, Weighted GPA, Advanced Placement and/or DC - Newman University**

Calculus AB is designed to be taught over a full high school academic year. It is possible to spend some time on elementary functions and still cover the Calculus AB curriculum within a year. However, if students are to be adequately prepared for the Calculus AB examination, most of the year must be devoted to topics in differential and integral calculus. These topics are the focus of the AP Exam. Upon completion of this course, students will have the opportunity to take the AP test. College credit may be awarded with a score of 3-5 of 5. Required summer work will be assigned in May and due the first day back in August. For more detailed information about topics covered, visit the official College Board AP Calculus AB website at <https://apstudent.collegeboard.org/apcourse/ap-calculus-ab/course-detail>

**PREREQUISITE: Above average performance in Pre-Calculus, \*teacher recommendation, and graphing calculator (TI-84CE).**

**Run out of math?  
See your counselor for  
off-campus options!**

# Science

**Three credits of SCIENCE are REQUIRED for graduation.**

**Minimal College and Career Ready science skills include physical science and biology.**

## **4000/4001 Physical Science (9-10) 1.0 credit**

**Qualified Admissions, NCAA, KHS**

This study of basic concepts in space, earth, physical and chemical sciences correlated with National Standards. Emphasis is placed upon the investigation and use of these concepts. This course will fulfill one high school science credit. Students who fail this course must re-enroll.

**FRESHMAN PREREQUISITE:** Enrollment in Algebra I or higher.

## **4006/4007 Biology (9-12) 1.0 credit**

**Qualified Admissions, NCAA, KHS**

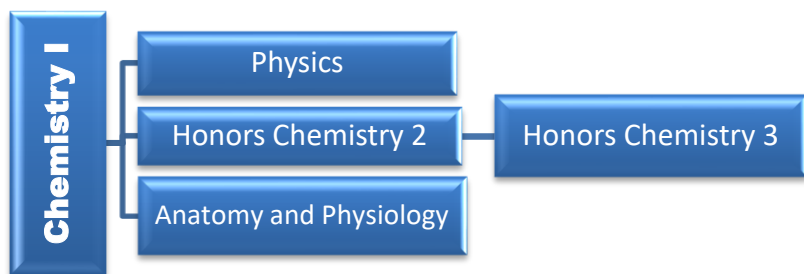
A college preparatory course in biology. Topics covered may include ecology, microbiology, cell biology, AIDS/STDS, genetics, zoology, evolution, human anatomy (selected systems), and botany. Emphasis on laboratory experiences and cooperative learning will vary with the topic being studied.

**SOPHOMORE PREREQUISITE:** Physical Science and science teacher recommendation. **FRESHMEN PREREQUISITE:** Application/contract signed by student, parent & 8th grade science teacher. Must meet specific requirements to qualify for Biology.

## **4010/4011 Honors Biology (9-12) 1.0 credit**

**Qualified Admissions, NCAA, KHS, Weighted GPA**

A college preparatory course in biology. The topics covered are the same as in biology, but with much greater depth with more rigorous expectations of students. Students will be expected to use higher level critical thinking and analysis skills. There will be several reading assignments throughout the year, including a summer reading assignment. Honors Biology is recommended for students preparing for AP science courses. **SOPHOMORE PREREQUISITE:** Physical Science, science teacher recommendation and required summer reading. **FRESHMAN PREREQUISITE:** Application contract signed by student, parent, 8<sup>th</sup> grade science teacher. Must meet specific requirements to qualify for Honors Biology and summer reading.



**Upon completion of biology, for those pursuing a college or university, chemistry is the "gate keeper" for other chemistry-based courses and physics.**

## **4300/4301 Chemistry I (10-12) 1.0 credit**

**Qualified Admissions, NCAA, KHS, GPA**

Chemistry is a physical science. It deals with the composition of matter and reactions among various forms of matter. Topics covered include: metric system; significant figures in measurements; lab technique; elements and symbols; atomic structure; quantum numbers; periodic table; chemical bonds; chemical composition; mole concept; chemical equations; gas laws. Laboratory and computer activities supplement the text material. Home internet access is not required but will allow for beneficial resources and Blackboard access. **PREREQUISITE:** Biology, Algebra I, enrolled in higher math and science teacher recommendation.

## **4302/4303 Honors Chemistry I (10-12) 1.0 credit**

**Qualified Admissions, NCAA, KHS, Weighted GPA**

This is a rigorous, accelerated Chemistry I course recommended for students with a strong aptitude in math and science. This course is designed to better prepare students for AP level or college level chemistry and is recommended for those who plan to take Chemistry II or the AP Chemistry exam. Chemistry I topics will be covered plus several additional topics which may include: gas stoichiometry, thermochemistry, acid/base chemistry, chemical kinetics, equilibrium, oxidation-reduction reactions, electrochemistry, and nuclear chemistry. Summer coursework and preparation will be required. Summer work will require internet access. (Broadband "high speed" access is strongly recommended.)

**PREREQUISITE:** Biology, Algebra I, enrolled in higher math and science teacher recommendation. Summer coursework is required. Students planning to take Chemistry II, or the AP Chemistry exam are strongly encouraged to take Honors Chemistry I.

## **4308/4309 Honors Chemistry II (11-12) 1.0 credit**

**Qualified Admissions, NCAA, KHS, Weighted GPA,**

**DC - Newman University**

Eligible students may take this course for college credit through Newman University. Honors Chemistry II is a rigorous course, for college credit. Topics covered may include: atomic structure, stoichiometry, reaction types, acids and bases, gases, thermochemistry, periodicity, electron

structure, bonding, liquids and solids, solution properties. Summer work is required as is the final exam. This course is designed to help prepare students for the AP Chemistry exam. **PREREQUISITE:** B or higher in Honors Chemistry I or B or higher in Chemistry I, Geometry, Algebra II (previously or concurrently enrolled) and Chemistry I teacher recommendation. Summer work required.

## **4306/4307 Honors Chemistry III (12) 1.0 credit**

**Qualified Admissions, NCAA, KHS, Weighted GPA, DC - Newman University &/or Advanced Placement**

This course continues where Honors Chemistry II ended. Five (5) hours of college credit from Newman University (General Chemistry II with Lab) may be earned concurrently with this course. Enrollment for college credit will occur in the spring semester. Topics covered will include: Nuclear Chemistry, Chemical Kinetics, Chemical Equilibrium, Acid-Base Chemistry and Equilibria, Spontaneity, Entropy, Free Energy, and Electrochemistry. Laboratory work will be a requirement as part of this course. The American Chemical Society (ACS) for General Chemistry will be mandatory in the spring as a requirement for Newman University. This exam will cover all topics from Honors Chemistry II and Honors Chemistry III. This course will also complete the required coursework for preparation of the Advanced Placement (AP) Chemistry Exam which may be taken in May. **PREREQUISITE:** Honors Chemistry II with grade of C or better and permission from your Honors Chemistry II instructor.

## **4500/4501 Physics (11-12) 1.0 credit**

**Qualified Admissions, NCAA, KHS**

Physics is a physical science and is mathematical in nature. It is concerned with the relation between matter and energy in the universe. Areas covered can include: measurement and lab technique, graphing techniques, nature and cause of linear and circular motions, Newton's laws, vector and scalar quantities, vector addition, forces, Newton's gravitational law, energy and momentum, interpretation of graphs and motion maps, Einstein's theories of relativity. Use of computers for data collection, analysis, and reporting is required. **PREREQUISITE:** Chemistry I and Geometry, plus Algebra II (previously or concurrently enrolled) and science teacher recommendation.

# Science

**Additional science courses can be used to fulfill graduation requirements, prepare for college or university, or meet pre-requisites for science-related degrees.**

## **4200/4201 Anatomy & Physiology (11-12) 1.0 credit Qualified Admissions, NCAA, KHS, Weighted GPA, DC - Newman University**

Designed for those who have a strong desire to go into some medical or related field as doctors, nurses, technicians, and therapists. Any who wish to go into Physical Education or Coaching are encouraged to take this study. The course will cover the structure and functions of the human body. Cat dissection and cadaver lab field trip is required.

**PREREQUISITE: Biology & previous or concurrent enrollment in Chemistry and science teacher recommendation. SUMMER WORK required.**

## **4602/4603 Forensic Science Comprehensive (11-12) 1.0 credit NCAA, DC - WSU Tech**

An application level course that follows a comprehensive background in biology and chemistry and provides students with knowledge and skills needed to pursue postsecondary training in LPSS careers requiring Forensic Science (i.e., Forensic Anthropology, Forensic Medicine, and Medical Examiner). This course covers additional topics from those covered in the .5 credit version.

**PREREQUISITE: Physical Science, Life Science and/or Biology and science teacher recommendation.**

## **4100/4101 Ecology (11-12) 1.0 credit Qualified Admissions, NCAA, KHS**

This upper level course will involve cooperative group work and research while focusing on ecological principles and human impact on the Biosphere. This class is also responsible for the care, maintenance and development of the Outdoor Education Area as well as the district-wide recycling program and other selected projects. **PREREQUISITE: Biology or Life Science and science teacher recommendation.**

## **4014/4015 Principles of Bio-Medical Science (9-12) 1.0 credit NCAA, PLTW**

In the introductory course of the PLTW Biomedical Science program, students explore concepts of biology and medicine to determine factors that led to the death of a fictional person. While investigating the case, students examine autopsy reports, investigate medical history, and explore medical treatments that might have prolonged the person's life. The activities and projects introduce students to human physiology, basic biology, medicine, and research processes while allowing them to design their own experiments to solve problems. **NOTE: This course does not count toward the three required science credits for graduation. It will count as an elective credit.**

## **4016/4017 Human Body Systems (10-12) 1.0 credit PLTW**

HBS is the secondary course in the PLTW Bio Med Science Pathway. Students examine the interactions of body systems as they explore identity, communication, power, movement, protection, and homeostasis. Students design experiments, investigate the structures and functions of the human body, and use data acquisition software to monitor body functions such as muscle movement, reflex and voluntary action, and respiration. Exploring science in action, students build organs and tissues on a skeletal manikin, work through interesting real-world cases and often play the role of biomedical professionals to solve medical mysteries. **PREREQUISITE: Required concurrent or previous enrollment in Biology and Principles of Bio-Med.**

**NOTE: This course does not count toward the three required science credits for graduation. It will count as an elective credit.**

# Health & Bio Sciences Career Cluster

## Health Sciences Pathway

Introduction Courses		
4006/4007	9-12	Biology
4300/4301	10-12	Chemistry
GENERAL Technical Courses		
4016/4017	10-12	Human Body Systems <i>PLTW</i>
Part of 9008 block	10-12	Medical Terminology A (WSU TECH)
Part of 9008 block	10-12	EKG for Healthcare Providers (Special Health Science Topics)
4602/4603	11-12	Forensic Science Comprehensive
4200/4201	11-12	Anatomy & Physiology
MEDICAL Technical Courses		
4014/4015	9-12	Principles of Biomedical Science <i>PLTW</i>
HEALTH CARE Technical Courses		
9599	9-12	Health (First Aid/CPR/EMR)
9158	11-12	Emergency Medical Technology (EMT)
Application Courses		
9008	10-12*	Certified Nursing Assistant (WSU TECH) *must be 16
Part of 9008 block	10-12	Home Health Aide (WSU TECH)
9009	12*	Certified Medication Aide (WSU TECH) *must be 18 & pass CNA State Boards

# Opportunities for Health Science Certifications through WSU Tech

**Note: HHA/CNA & EKG & Medical Terminology are combined for a 2-hour, 1-semester course hosted by GHS taught by a WSU Tech instructor.** PREREQUISITES: Must be 16-years old the semester course is taken. Student must provide documentation of SSN (copy of card, W2, or taxes). Must pass TB test through a physician and document using the WSU Tech TB screener form. Must pass the minimum ACCUPLACER reading test. First time students must apply for admission to WSU Tech at [www.wsutech.edu](http://www.wsutech.edu) (create profile & apply). A WSU Tech JumpStart form signed by the student, counselor, and parent is required.

9008 Block

## CNA (Certified Nursing Assistant)

The Certified Nurse Aide (CNA) program prepares students to be caregivers in nursing homes while working under the supervision of licensed nurses. The instruction includes classroom, skills lab and clinical experiences. Students must successfully complete a competency skills checklist, maintain attendance as defined in the course syllabus and achieve satisfactory grades. The program meets the guidelines of the Kansas Department on Aging and Disability Services and graduates may take the state examination to become CNAs after successful completion of the course. **NOTE: Approximate cost for scrubs, gait belt, and patch is \$45.**

## HHA (Home Health Aide)

The Home Health Aide course prepares the certified nurse aide (CNA) to care for patients in community and home settings. Graduates are eligible to take the Kansas certification examination to become a certified home health aide. Documentation and identification of client needs is an important part of this course. Many home health aides are also hired to work at hospice agencies and with agencies working with children. **Students must have a 15 or higher ACT Reading score OR pass the ACCUPLACER Reading Test offered by WSU Tech.**

## EKG for Healthcare Providers

Focuses on the specialized procedures associated with the cardiovascular system. Students will perform electrocardiograms. Course also serves as an introduction to basic dysrhythmias and the skills necessary to recognize normal from abnormal in an emergency. Specific attention is given to patient significance and possible early intervention for each dysrhythmia. EKG rhythm strips, and exercises are provided for student recognition and practice. **NOTE: Approximate cost for the textbook is \$80.**

## Medical Terminology

Presents basic principles of medical word-building. The study develops competencies in the basic elements forming medical words, categorizing major suffixes and group prefixes. Anatomical, physiological and pathological terms are reviewed so students better understand special medical procedures. This is the introductory course in medical terminology and is intended for all who desire knowledge in

Emergency Medical Services- EMT			
CRN		COURSE NAME	CREDITS
EMS	115	Tactical Medicine	3.00
EMS	105	Emergency Medical Technician	12.00
PDV	105	Blueprint for Personal Success	2.00
<b>Total</b>			<b>17.00</b>

9158 Block

this subject. **NOTE: Approximate cost for Medical Terminology textbook is \$102.9158**

## Emergency Medical Technology

EMTs are clinicians, trained to respond quickly to emergency situations regarding medical issues, traumatic injuries and accident scenes. This class is designed to provide skills and knowledge necessary to sit for the EMT certification test. The class is taught by a certified EMT instructor and follows competencies set forth by the certifying agency.

**Note: EMT is a 4-hour, 1-semester block.**

**PREREQUISITES: Must provide documentation of SSN (copy of card, W2, or taxes). Must provide copy of immunizations, pass a physical exam, and pass TB test through a physician and document using the WSU Tech TB screener form. First time students must apply for admission to WSU Tech at [www.wsutech.edu](http://www.wsutech.edu) (create profile & apply). A WSU Tech JumpStart form signed by the student, counselor, and parent is required.**

**As a Kansas Board of EMS certification applicant, student will be asked to complete a background evaluation.**

## Fast-Track to Nursing through WSU Tech!

You can be ready to go by 2<sup>nd</sup> semester of Senior Year!

See your counselor!

# Social Studies

Three credits of SOCIAL STUDIES are REQUIRED for graduation.

US History 10 &  
World History 10

US History 11

Government

Plus a Social  
Studies Elective

## 3106 U.S. History 10 0.5 credit

### Qualified Admissions, NCAA, KHS

This course is required for graduation. This one semester class is a survey of American History from discovery through the Civil War. Topics will include the Revolutionary War and factors leading to an American victory, establishment of an American government including the Constitution and The Bill of Rights, American Indian policy during the first half of the 19th century, Manifest Destiny, the social and economic influences of slavery on America, the events leading up to, and including the Civil War, and the Reconstruction Period.

## 3110 Honors U.S. History 10 0.5 credit

### Qualified Admissions, NCAA, KHS, Weighted GPA

The objective of this course is to increase the student's understanding of United States history with the goal of having each student pass the AP examinations after their junior year. This course is a one semester class, from colonial settlement thru the Civil War and Reconstruction. This class will concentrate on political and economic theories that helped form the foundation of government and society in America. We will also analyze the economic, political and social causes of the Civil War, and the impact it had on the later 1800s. Moreover, the AP curriculum stresses higher order thinking skills. Thus, the student will be required frequently to analyze, synthesize, and evaluate primary and secondary historical sources in addition to memorizing, comprehending, and applying facts. **PREREQUISITE: 3.0 GPA recommended.**

## 3107 World History 10 0.5 credit

### Qualified Admissions, NCAA, KHS

This is a survey course centering on the great civilizations of Africa, Asia, and Europe. The student will use text, maps, handouts, video and research to develop an understanding of the culture, people, events, literature and locations that have shaped the modern world through the European Reformation.

## 3111 Honors World History 10 0.5 credit

### Qualified Admissions, NCAA, KHS, Weighted GPA

Designed to develop greater understanding of the evolution of global processes and contacts, in interaction with different types of human societies. This understanding is advanced through a combination of selective factual knowledge and appropriate analytical skills. The course builds on an understanding of cultural, institutional, and technological precedents that along with geography set the human stage. The Honors curriculum stresses higher order thinking skills within a rigorous academic context. Therefore, the student will be required frequently to analyze, synthesize and evaluate primary and secondary historical sources in addition to memorizing, comprehending, and applying facts. **PREREQUISITE: 3.0 GPA recommended.**

## 3100/3101 U.S. History 11 1.0 credit

### Qualified Admissions, NCAA, KHS

A thorough examination of American History from the end of the Civil War to the present. Topics such as Reconstruction, closing of the American frontier, the Industrial Revolution, World War I and II, the Great Depression, and the modern era will be discussed in this course. It is a full-year course that involves not only the traditional methods of teaching, but also a problem-solving approach using historical simulations.

**PREREQUISITE: U.S History 10, World History 10.**

## 3104/3105 AP U.S. History 11 1.0 credit

### Qualified Admissions, NCAA, KHS, Weighted GPA, Advanced Placement

The objective of this course is to increase the student's understanding of United States history with the eventual goal of having each student pass the AP examinations after their Junior year. This course covers from colonial settlement through the present. This class will concentrate on political and economic theories that helped form the foundation of government and society in America. We will also analyze the economic, political and social causes of the Civil War, and the impact it had on the later 1800s. Moreover, the AP curriculum stresses higher order thinking skills. Thus, the student will be required frequently to analyze, synthesize, and evaluate primary and secondary historical sources in addition to memorizing, comprehending, and applying facts. **PREREQUISITE: U.S History 10, World History 10, 3.0 GPA recommended and US 10 or World History teacher recommendation.**

## 3000 U.S. Government (12) 0.5 credit

### Qualified Admissions, NCAA, KHS

One semester required for graduation. The course includes an examination of the three branches of American Government as well as topics such as the election process, civil rights, the Constitution, and a comparison of the political and economic systems commonly found in the world today. **PREREQUISITE: U.S. History.**

## 3006 Honors U.S. Government (12) 0.5 credit

### Qualified Admissions, NCAA, KHS, Weighted GPA, Newman University dual-credit

This is a survey course that deals with the national, state and local governments in the United States. The primary focus is on the structure and functions of the nation government with a view to achieving a better understanding of the problems of democratic and constitutional governments and of the forces institutions, interests, ideas and individuals that interact with one another in a dynamic and ever changing United States and world and thus produce the American political system. **PREREQUISITE: 3.0 cumulative GPA. Will need to purchase the latest textbook edition (approx. \$90).**

## Social Studies Electives

## 3400 International Affairs (9- 12) 0.5 credit

### Qualified Admissions, NCAA, KHS

This is a current news type of class that focuses on political, economic, and geographical topics. Reading the daily newspaper, news magazines, and studying maps is a large part of this course. Course can be taken 1st or 2nd semester or both and repeated.

## 3301 Sociology (9-12) 0.5 credit

### Qualified Admissions, NCAA, KHS

This class is concerned with developing an understanding of sociological principles and social problems. This course is for high school credit only.

## 3300 Psychology (10-12) 0.5 credit

### Qualified Admissions, NCAA, KHS, DC - WSU Tech

Psychology courses introduce students to the study of individual human behavior. Course content typically includes (but is not limited to) an overview of the field of psychology, topics in human growth and development, personality and behavior, and abnormal psychology. **PREREQUISITE: 3.0 cumulative GPA.**

# World Languages

**Not required for graduation, however, some colleges and universities, as well as certain degrees require a minimum of two years of a language.**

## **5000/5001 German I 1.0 credit**

### **Qualified Admissions, NCAA, KHS**

German I leads to practical control of the four language skills: understanding, speaking, reading and writing with emphasis on the first two. It also begins a study of the culture of Germany and the German-speaking world.

## **5002/5003 German II (10-12) 1.0 credit**

### **Qualified Admissions, NCAA, KHS**

German II continues the skills of German I with the following goals in mind: to be able to understand an educated native speaker; to speak with pronunciation, intonation, and grammatical accuracy and adequate fluency; to read contemporary writing; to continue a study of German culture. **PREREQUISITE: German I and teacher recommendation.**

## **5101/5102 Spanish I (9-12) 1.0 credit**

### **Qualified Admissions, NCAA, KHS**

Common expressions and language appropriate for everyday situations are studied, as well as basic grammar structure, and geography of Spanish speaking countries. Cultural activities are also conducted in class. A good grasp of basic English grammar is helpful for success in Spanish.

## **5103/5104 Spanish II (9-12) 1.0 credit**

### **Qualified Admissions, NCAA, KHS**

Students continue developing comprehension and conversation skills while also focusing on reading and writing, and grammar. More geography and culture of the Hispanic world is studied. Cultural activities conducted in class. **PREREQUISITE: Spanish I and teacher recommendation.**

## **5105/5106 Spanish III (10-12) 1.0 credit**

### **Qualified Admissions, NCAA, KHS, Weighted GPA, DC - Newman University**

The Students will work toward proficiency in the skills of speaking, listening, reading and writing. They will be expected to make every effort to speak in the target language daily with the teacher and to each other. Students will continue to expand their vocabulary, knowledge of verb tenses, and grammar. **PREREQUISITE: 3.0 GPA Spanish II and teacher recommendation.**

# Physical Education & Health

**Health (taken any time) and one credit of PE during freshman year are required for graduation.**

## **9504/9505 Freshmen Boys' PE (9) 1.0 credit**

Consists of instruction in proper stretching techniques, team sports, lifetime carryover activities and a moderate fitness workout. The emphasis will be on the importance of daily recreational physical activity.

## **9500/9501 Boys' Weights Training (9-12) 1.0 credit**

This course will place an emphasis on the basics of resistance exercise training. Through different exercise modalities students will train using barbells exercises, dumb bell exercises, and body weight exercises. The course will also include various health topics. This course is designed to teach the basics and techniques of weight training. This course is a prerequisite for Advanced Weight Training. (repeatable) **PREREQUISITE: Instructor consent.**

## **9599 Health (First Aid/CPR/EMR) (9-12) 0.5 credit**

Provides information as a basis for making healthy decisions. Information on drug and alcohol education, tobacco education, relationships and communication, nutrition, wellness, fitness, personality, mental health, teenage stress, infectious disease, chronic diseases and sexually transmitted diseases will be presented. Students will also receive instruction in the requirements and skills to obtain national certifications for First Aid, CPR and Emergency Medical Responder.

**NOTE: This course may also be taken during the summer. Look for summer school application sometime in April.**

## **9606/9607 Freshmen Girls' PE (9) 1.0 credit**

Designed to provide young women with the knowledge and skills needed to engage in a physically active, healthy lifestyle throughout life. Three areas of focus in the course include: Health-related Fitness, Lifetime Physical Activity and Health/Wellness Concepts & Skills. This course is required for graduation.

## **9604/9605 Girls' Weights Training (9-12) 1.0 credit**

This course will emphasize weight training, plyometrics, flexibility and agility exercises, speed conditioning, and cardiovascular training. This course is designed only for those who wish to excel in this area. (repeatable) **PREREQUISITE: Instructor consent.**

**After completion of PE freshman year, students may take Boys' or Girls' Weights, or courses listed below.**

## **9502/9503 Lifetime Fitness (10-12) 1.0 credit**

Focused on improving health-related fitness, as well as providing physical education instruction in: physical fitness, team games, outdoor adventure and recreation activities, and appreciation and knowledge of sports. Emphasis will be on lifetime fitness and outdoor adventure activities including (but not limited to): Archery, Fishing, Basketball, Badminton, Kan Jam, Biking, Football, Tchoukball, Volleyball, Disc Golf, Orienteering, as well as various other activities. **PREREQUISITE: Completion of any 9th grade PE. Cannot be taken concurrently with another PE course.**

## **9506/9507 Advanced Weights Training (10-12) 1.0 credit**

This course will place an emphasis on the advanced movements of resistance exercise training. Through different exercise modalities, students will train using Olympic-style lifting, tri-phasic training, and conjugated periodization. The course will also include various health topics. This course is designed to teach the advanced-level movements and weight programming. **PREREQUISITE: Boys' or Girls' Weights and instructor consent.**

# Instrumental Music

**A minimum of ONE FINE ART (1 credit) is REQUIRED for graduation.**

**More FINE ART options found in the Art and Theatre courses.**

## 8000/8001

### Marching/Wind Ensemble & Symphonic Band (9-12) 1.0 credit

Designed for musical growth through performance. While the fall semester emphasizes marching performance, the spring semester emphasis will be placed on the Concert Band and State Music Festival. Additional performances include home basketball games, and various concerts. Opportunities exist for solo, small ensemble, and honor group performances through this class. A wide range of music will be rehearsed and performed. There will be mandatory Monday night rehearsals throughout marching season. Monday night rehearsals will continue throughout the year for solos and small ensembles. **PREREQUISITE: Audition and instructor consent. Use 8000 for Color Guard.** (repeatable)

## 8002/8001

### Pep Band/Wind Ensemble & Symphonic Band (9-12) 1.0 credit

Designed for musical growth through skill practice and performance. This band will perform at all home football games and at least three home basketball games. They will function as the athletic support band. This band will also have the opportunity to work on solos and small ensembles for the Regional and State Music Festivals. Students will perform three concerts for the school year. **PREREQUISITE: Instructor consent.** (repeatable)

## 8004/8005 Percussion Ensemble (9-12) 1.0 credit

Percussion Ensemble is a chamber group that rehearses throughout the year. Students study a variety of genres within the percussion performance setting including Latin, Jazz, Small Ensemble, Drumline and other styles of percussion music. This course is taken concurrently with Band.

## 8007 Jazz Band (9-12) 1.0 credit

With performance as the main emphasis, various forms of Jazz and rock music will be explored. Students will be encouraged to do improvisational solo work. Other possibilities include arranging special music for this ensemble. **PREREQUISITE: Audition and concurrent enrollment in an additional vocal or instrumental music course.** (repeatable)

## 8008/8009 Orchestra (9-12) 1.0 Credit

Designed for any high school student who plays string instruments (violin, viola, cello, and bass). Additional performances will be required outside of class time. Opportunities exist for solo, small ensemble, and honor group performances through this class. **PREREQUISITE: Instructor consent.** (repeatable)

## 8200/8201 Theory of Music (11-12) 1.0 credit

This course is designed to prepare the college-bound music student and will give students the foundation needed to understand the theory of music. **PREREQUISITE: Instructor consent.**

## 8302/8303 Independent Study (11-12) 1.0 credit

This course is designed to assist students in expanding their knowledge of music in the area of theory and composition. It is for the student wishing to pursue music as a career. Students need to have a background in instrumental music (band/piano). **PREREQUISITE: Music Theory and instructor consent.** (repeatable)

# Vocal Music

## 8102/8103 Concert Choir (10-12) 1.0 credit

For anyone interested in singing. Placement is by audition or at the discretion of the director. Criteria for entrance will include ability and/or interest and vocal quality. Students will study the broad range of choral repertoire, vocal performance skills, musical history and composition. Performance experience will include concerts, assemblies, musicals, and solo/ensembles, some of which are mandatory and graded. (Repeatable) **PREREQUISITE: Audition. Instructor consent.**

## 8104/8105 Belle Voce (formerly Chantonettes) (10-12) 1.0 credit

A treble choir of auditioned voices. Students must possess exceptional vocal qualifications, including superior vocal quality, musicianship, intonation, balance and blend. Students study a wide range of musical literature and types and some choreography. A performance schedule is maintained, and a special outfit is required. Students are required to be concurrently enrolled in either Concert Choir or Concert Band. Outside vocal lessons are recommended, but not required. Prior choral experience is necessary. Students will be required to purchase concert attire. Performance experience will include concerts, assemblies, musicals, and solo/ensembles, some of which are mandatory and graded. (repeatable) **PREREQUISITE: Audition. Concurrent enrollment in Concert Choir.**

## 8106/8107 Madrigals (10-12) 1.0 credit

A mixed choir of auditioned voices. Students must possess exceptional vocal qualifications, including superior vocal quality, musicianship, intonation, balance and blend. Students study a wide range of musical literature and types and some choreography. A performance schedule is maintained, and a special outfit is required. Students are required to be concurrently enrolled in either Concert Choir or Concert Band. Outside vocal lessons are recommended, but not required. Prior choral experience is necessary. Students will be required to purchase concert attire. Performance experience will include concerts, assemblies, musicals, and solo/ensembles, some of which are mandatory and graded. (repeatable) **PREREQUISITE: Audition. Concurrent enrollment in Concert Choir.**

## 8108/8109 Blue Notes (formerly Men's Ensemble) (9-12) 1.0 credit

A tenor-bass choir open to all students; prior vocal experience is not required. Criteria for entrance will include interest and enthusiasm. Students will study vocal techniques, a wide range of repertoire, and improvement of individual vocal skills. This is an introductory recommended for those wishing to improve skills to audition for the auditioned choir: Concert Choir, and Madrigals. Performance experience will include concerts, assemblies, musicals, and solo/ensembles, some of which are mandatory and graded. (Repeatable)

## 8110/8111 Harmonics (formerly Women's Choir) (9-12) 1.0 credit

A treble choir open to all students; prior vocal experience is not required. Criteria for entrance will include interest and enthusiasm. Students will study vocal techniques, a wide range of repertoire, and improvement of individual vocal skills. This is an introductory recommended for those wishing to improve skills to audition for the auditioned choir: Concert Choir, Belle Voce, and Madrigals. Performance experience will include concerts, assemblies, musicals, and solo/ensembles, some of which are mandatory and graded. (Repeatable)

## 8114 and/or 8115 Class Voice (9-12) 0.5 credit

In the classroom setting, students learn how to use their body to create focused, resonant singing techniques by singing with the group and individually. The primary focus is to learn how to sing and improve vocal technique. Students will have both the theoretical and applied (actual singing individually and as a group in class ONLY) experience. It is intended for students wanting to make it into auditioned choirs. Students already taking private voice lessons will have second priority.

# Art

**A minimum of ONE FINE ART (1 credit) is REQUIRED for graduation.**  
**More FINE ART options found in the Instrumental Music, Vocal Music, and Theatre courses.**

## **8500 Intro to Drawing and Design (9-12) 0.5 credit**

Introduction to Drawing emphasizes the development of fundamental drawing skills. Focus will be on the application of art theory, processes and techniques that increase the power of observation. Instruction includes the elements and principles of design as applied in composition through hard copy and/or electronic software. **This course is the equivalent of Intro to Art or Intro to Drawing in middle school.**

**Do not repeat course.**

## **8502 Ceramics I (9-12) 0.5 credit**

Basic methods and techniques in hand building forms and figures will be experienced. Introduction to the sculptural and functional uses of clay, glazes and firing and other materials will be studied in this class. Students will gain an understanding of the history and aesthetics of the media as well. **PREREQUISITE: Intro to Drawing (GMS or GHS). For 8<sup>th</sup> grade students, instructor consent.**

## **8503 Ceramics II (9-12) 0.5 credit**

The student who has expressed an interest and talent in ceramics will have the opportunity to examine the media in more depth. More emphasis will be placed on development of forms and structure, and studio work for functional or exhibition purposes. Additional methods of construction, such as working on the potter's wheel will be expected. **PREREQUISITE: Ceramics I.**

## **8504 Advanced Ceramics (10-12) 0.5 credit**

This is an advanced ceramics/sculpture course. Ceramics III would allow students to further explore advanced techniques in hand-building and throwing with clay. This course would also allow students to work with other types of sculptural materials such as wire, found objects, papier mache, and cardboard. This added experience would allow students to advance to the level of taking AP Studio Art with a 3D emphasis. **PREREQUISITE: Ceramics II and Instructor consent.**

## **8607 Photo Imaging (9-12) 0.5 credit**

Photo Imaging teaches the technical skills needed to produce quality images for use in a variety of applications. Topics include use of equipment, software and techniques to take, edit and manipulate digital images.

## **8600 Essentials of Fashion, Apparel, Interior & Design (9-12) 0.5 credit**

### **DC – WSU Tech (10-12 only)**

Essentials of Interior and Textile Design introduces students to and expands upon the various aspects of industry, conveying the commercial application of principles and elements of design, production processes, and maintenance techniques to meet the design needs of humans. This course will also provide a discussion and exploration of career opportunities in interior, textiles and set/exhibit design.

## **8622 Fashion Trends (9-12) 0.5 credit**

Fashion Trends examine special topics in apparel that meet the needs of humans now and projected in the future rather than providing a general study. Topics include sustainable design and apparel for diverse populations and how trends are developed. Additional topics may be generated as trends are identified. **PREREQUISITE: Essentials of Fashion, Apparel, & Interior Design.**

## **8620/8621 Fashion, Apparel & Interior & Design Studio (10-12) 1.0 credit**

Provides students with the opportunity to expand knowledge and experience with 4-dimensional design forms as they relate to human needs. Topics will include the language, materials and processes used to apply the design elements and principles based upon designers, periods and styles. As students advance and become more adept, the instruction regarding the creative process becomes more refined and students are encouraged to develop their own design styles to meet the needs of a client. This application course is client driven in the interior, textile or apparel fields. **PREREQUISITE: Essentials of Fashion, Apparel, & Interior Design.**

## **8702 Principles of Illustration I (9-12) 0.5 credit**

Principles of Illustration (Drawing I) explores a variety of media, tools and supports to communicate ideas. Topics include an understanding of illustration as applicable to careers in graphic design, animation, apparel/textile design, industrial design, web design, architecture, interior design and fine arts. Techniques in traditional and digital illustration applications will be explored as directly linked to ever-changing social trends. **PREREQUISITE: Intro to Drawing (GMS or GHS). For 8<sup>th</sup> grade students, instructor consent.**

## **8703 Principles of Illustration II (9-12) 0.5 credit**

The course (Drawing II) is designed for the student who has developed an interest in drawing. More extensive study of various drawing media will be explored. Students will draw from observation as well as original photographs. **PREREQUISITE: Principles of Illustration I or Drawing I.**

## **8800 Painting I (9-12) 0.5 credit**

This class examines methods and meaning in painting. As well as technique, students will be introduced to the uses of painting across time and cultures. Various painting media including tempera, watercolor, acrylic and oil will be explored, and students will learn about traditional and contemporary uses of materials.

**PREREQUISITE: Principles of Illustration I.**

## **8801 Painting II (10-12) 0.5 credit**

This class is designed for students who have developed an interest in painting. Emphasis will be placed on development of composition and styles from original photographs and ideas. **PREREQUISITE: Painting I.**

## **8850/8851 AP Studio Art (11-12) 1.0 credit** **Weighted GPA, Advanced Placement**

Students will follow the criteria for developing a portfolio for the Advanced Placement Art Studio suggested by the College Board for use in AP classes. Students will develop a portfolio of work, which suggests depth, breadth and technical skill. Upon completion of the course, some students will qualify for college credit in art, dependent upon the scores earned by taking the Advanced Placement exam in art. This course is designed to serve students who intend to continue their education in art or a related field. This course may be offered every other year due to enrollment.

**PREREQUISITE: Level II drawing, painting and ceramics or instructor consent.**

# Arts, A/V & Communications Career Cluster

## Digital Media Pathway (Broadcast, Newspaper, Yearbook)

Introduction Courses		
GMS course	7-9	Computer Applications
6101	9-12	Computer Applications I (Certifications Microsoft Word & Power Point)
6090	9-11	Business Essentials
Technical Courses		
6326	9-10	21 <sup>st</sup> Century Journalism
6327	9-10	Audio/Video Production Fundamentals
6338/6339	10-12	Digital Media Technology (1 <sup>st</sup> year Yearbook)
6334/6335	10-12	Digital Media Technology (1 <sup>st</sup> year Newspaper)
6323	9-10	Graphic Design Fundamentals
6332	10-12	Graphic Design I
6333	10-12	Graphic Design II
8607	9-12	Photo Imaging
Application Courses		
6342/6343	10-12	Video Production
6344/6345	11-12	Digital Media Design & Production (Year 2 Broadcast)
6340/6341	11-12	Digital Media Design & Production (Year 2 Yearbook)
6336/6337	11-12	Digital Media Design & Production (Year 2 Newspaper)

### Introductory-Level Courses

#### **6101 Computer Applications I Certification Microsoft Word & Power Point (9-12) 0.5 credit**

Students will begin with a pre-test of Microsoft Word and Power Point and work to become proficient in both Microsoft applications. Students have the option to earn certifications in both through TESTOUT Pro. **This is an introductory course for several pathways.**

#### **6090 Business Essentials (9-10) 0.5 credit**

This is a core course designed to give students an overview of the business, marketing and finance career-cluster occupations. Students will develop an understanding of how academic skills in mathematics, economics, and written and oral communications are integral components of success in these occupations. Students will examine current events to determine their impact on business and industry and legal and ethical behavior, acquire knowledge of safe and secure environmental controls to enhance productivity, determine how resources should be managed to achieve company goals, and identify employability and personal skills needed to obtain a career and be successful in the workplace. As students learn about different types of business ownership, they will interpret industry laws and regulations to ensure compliance, identify principles of business management, and analyze business practices to determine ethics and social responsibilities.

### Technical-Level Courses

#### **6326 21st Century Journalism (9-10) 0.5 credit**

This course promotes the development of the skill set needed today and in the future. Topics include an exploration of the role media and the communications industry has in society, the development of the technical skills related to journalistic writing and interviewing, as well as understand the ethical and legal issues related to the field. **Students typically take both 6326 & 6327.**

#### **6327 A/V Production Fundamentals (9-10) 0.5 credit**

Students will demonstrate a basic understanding of producing video for a variety of uses. Topics will include: Analyzing the pre-production, production, and post-production processes. Students will explore and operate the equipment and demonstrate techniques used to develop a quality audio/video production. **Prerequisite: 21st Century Journalism or instructor consent.**

#### **6323 Graphic Design Fundamentals (9-10) 0.5 credit**

Graphic Design Fundamentals provides a basic understanding of the graphic design process. Topics include analyzing the design elements and principles, exploring industry tools, software and equipment and learning composition techniques to develop a quality product.

#### **6332 Graphic Design I (10-12) 0.5 credit**

Graphic designers specialize in creating visual communications using color, type, print, photography, illustrations, animation, and other techniques. The graphic design programs of Adobe InDesign, Photoshop, and Illustrator are used to cover the basics of graphic design. Each of these subjects is covered separately and as they relate together in page architecture. Principles of graphic design cover placement of elements, their balance and alignment, and how proximity changes the relationship to the big picture of the design. Repetition, movement, and the importance of consistency in the design are covered, as well as contrast, white space, and unity in design placement. A variety of projects will be assigned to create a portfolio of student work. **PREREQUISITE: Graphic Design Fundamentals or instructor consent.**

#### **6333 Graphic Design II (10-12) 0.5 credit**

Graphic Design II covers contemporary digital design, using interactive media and motion graphics. Topics covered include the design of websites from a graphics viewpoint through Photoshop and web effects that allow students to practice web design techniques through Dreamweaver. **Prerequisite: Graphic Design Fundamentals or instructor consent.**

#### **8607 Photo Imaging (9-12) 0.5 credit**

Photo Imaging teaches the technical skills needed to produce quality images for use in a variety of applications. Topics include use of equipment, software and techniques to take, edit and manipulate digital images.

# Arts, A/V & Communications Career Cluster

## Digital Media Pathway (Broadcast, Newspaper, Yearbook)

### 6338/6339 Digital Media Technology (1st Year-Yearbook) (10-12) 1.0 credit

This is a team-oriented lab whose mission is to produce a yearbook for the school community. Students will complete a variety of activities, including selling ads, designing layouts and covers, business management, copy writing, mastery of computer, photography and graphic design. Students will have the opportunity to work in a variety of situations inside and outside the class, and during and after school hours. Students must be available for out-of-class work as required. **PREREQUISITE: 21st Century Journalism, application, and/or instructor consent.**

### 6334/6335 Digital Media Technology (1st Year - Newspaper) (10-12) 1.0 credit

Students will explore all aspects of news production. The newspaper staff will consist entirely of students in this class. Student responsibilities include editing, reporting, interviewing, writing, page design, graphic design, planning, advertising, and printing. Students must be available for out-of-class work as required. This class takes a real-world approach to high school journalism. **PREREQUISITE: 21st Century Journalism, application, and/or instructor consent.**

## Application-Level Courses

### 6336/6337 Digital Media Design & Production (Advanced Newspaper) (11-12) 1.0 credit

Advanced students work together with first year students to produce, publish and deliver news that will be distributed to the school community. Students participate at leadership levels serving as editors and managers. Building on a core-knowledge of basic journalism, students will improve their skills in interviewing; writing news, editorials, sports, and features; writing in-depth stories; editing; digital imaging; computer techniques; page design; photojournalism; graphic design; and advertising. Students must be available for out-of-class work as required. **PREREQUISITE: Newspaper, application, and/or instructor consent.**

### 6340/6341 Digital Media Design & Production (Advanced Yearbook) (11-12) 1.0 credit

Advanced students work together with first year students to produce and publish the high school yearbook. Students will participate at leadership levels serving as editors and managers. Building on core knowledge of yearbook fundamentals, students will improve their skills in interviewing, copywriting, photography, page design, graphic design, desktop publishing, digital imaging, staff management, and advertising. Out-of-class work is required. **PREREQUISITE: Yearbook, application, and/or instructor consent.**

### 6342/6343 Video Production (1st Year – Broadcast) (10-12) 1.0 credit

Video Production applies the technical skills learned in Audio Video Production Fundamentals by allowing students to orchestrate projects from setting the objectives to the post-production evaluation. The subject of the presentation may be determined in several ways but must address an authentic need. The complexity of the presentation is not the focus of the course, but the experience of the entire process in, to include planning the presentation, setting up the studio (if applies), acting as videographer and editor to make it fluid and seamless. Students will also be asked to complete special projects for members of the community. Students must be available for out-of-class work as required. **PREREQUISITE: 21st Century Journalism AND A/V Production Fundamentals, and/or instructor consent.**

### 6344/6345 Digital Media Design & Production (Advanced Broadcast) (11-12) 1.0 credit

Students will demonstrate a basic understanding of producing video for a variety of uses. Topics will include: Analyzing the pre-production, production and post-production processes. Students will explore and operate the equipment and demonstrate techniques used to develop a quality audio video production. **PREREQUISITE: Video Production and instructor consent.**

## Other Courses

### 6311/6312 Journalism Production Lab (11-12) 1.0 credit

This is an additional planning and working hour designed for publication editors. **PREREQUISITE: Instructor consent.**

# Arts, A/V & Communications Career Cluster

## Graphic Design Pathway

Introduction Courses		
GMS course	7-8	Computer Applications
6101	9-12	Computer Applications I (Certifications Microsoft Word & Power Point)
8500	7-12	Introduction to Drawing and Design
Technical Courses		
8702	9-12	Principles of Illustration I
8607	9-12	Photo Imaging
6323	10-12	Graphic Design Fundamentals
6332	10-12	Graphic Design I
6333	10-12	Graphic Design II
Application Courses		
6702/6703	12	Media Technology – Workplace Experience (1-hour internship)

### Introductory-Level Courses

#### **6101 Computer Applications I Certification Microsoft Word & Power Point (9-12) 0.5 credit**

Students will begin with a pre-test of Microsoft Word and Power Point and work to become proficient in both Microsoft applications. Students have the option to earn certifications in both through TESTOUT Pro. **This is an introductory course for several pathways.**

#### **8500 Intro to Drawing (9-12) 0.5 credit**

Introduction to Drawing emphasizes the development of fundamental drawing skills. Focus will be on the application of art theory, processes and techniques that increase the power of observation. Instruction includes the elements and principles of design as applied in composition through hard copy and/or electronic software. **This course is the equivalent of Intro to Art or Intro to Drawing in middle school. Do not repeat course.**

### Technical-Level Courses

#### **8607 Photo Imaging (9-12) 0.5 credit**

Photo Imaging teaches the technical skills needed to produce quality images for use in a variety of applications. Topics include use of equipment, software and techniques to take, edit and manipulate digital images.

#### **6323 Graphic Design Fundamentals (9-10) 0.5 credit**

Graphic Design Fundamentals provides a basic understanding of the graphic design process. Topics include analyzing the design elements and principles, exploring industry tools, software and equipment and learning composition techniques to develop a quality product.

#### **6332 Graphic Design I (10-12) 0.5 credit**

Graphic designers specialize in creating visual communications using color, type, print, photography, illustrations, animation, and other techniques. The graphic design programs of Adobe InDesign, Photoshop, and Illustrator are used to cover the basics of graphic design. Each of these subjects is covered separately and as they relate together in page architecture. Principles of graphic design cover placement of elements, their balance and alignment, and how proximity changes the relationship to the big picture of the design. Repetition, movement, and the importance of consistency in the design are covered, as well as contrast, white space, and unity in design placement. A variety of projects will be assigned to create a portfolio of student work. **PREREQUISITE: Graphic Design Fundamentals or instructor consent.**

#### **6333 Graphic Design II (10-12) 0.5 credit**

Graphic Design II covers contemporary digital design, using interactive media and motion graphics. Topics covered include the design of websites from a graphics viewpoint through Photoshop and web effects that allow students to practice web design techniques through Dreamweaver. **Prerequisite: Graphic Design Fundamentals or instructor consent.**

### Application-Level Course

#### **See CTE Instructor for application Media Technology—Workplace Experience (12) Credit varies**

Provides students with work experience in fields related to media technology. Goals are typically set cooperatively by the student, teacher, and employer (although students are not necessarily paid). These courses may include classroom activities as well, involving further study of the field or discussion regarding experiences that students encounter in the workplace. **Prerequisite: 2 or more credits at the TECHNICAL LEVEL, application and instructor consent.**

# Finance Career Cluster

## Business Finance Pathway

### Accounting Strand

Introduction Courses		
6090	9-11	Business Essentials
Technical Courses		
6000/6001	10-12	Accounting I
6203	10-12	Consumer & Personal Finance
6202	10-12	Business Economics
6200	10-12	Business Law
6216	10-12	Entrepreneurship
Application Courses		
6004	11-12	Advanced Accounting

### Introductory-Level Courses

#### **6090 Business Essentials (9-10) 0.5 credit**

This is a core course designed to give students an overview of the business, marketing and finance career-cluster occupations. Students will develop an understanding of how academic skills in mathematics, economics, and written and oral communications are integral components of success in these occupations. Students will examine current events to determine their impact on business and industry and legal and ethical behavior, acquire knowledge of safe and secure environmental controls to enhance productivity, determine how resources should be managed to achieve company goals, and identify employability and personal skills needed to obtain a career and be successful in the workplace. As students learn about different types of business ownership, they will interpret industry laws and regulations to ensure compliance, identify principles of business management, and analyze business practices to determine ethics and social responsibilities.

### Technical-Level Courses

#### **6000/6001 Accounting I (10-12) 1.0 credit**

##### **DC - WSU Tech**

Accounting courses introduce and expand upon the fundamental accounting principles and procedures used in businesses. Course content typically includes the full accounting cycle, payroll, taxes, debts, depreciation, ledger and journal techniques, and periodic adjustments. Students may learn how to apply standard auditing principles and to prepare budgets and final reports. Calculators, electronic spreadsheets, or other automated tools are usually used. Advanced topics may include elementary principles of partnership and corporate accounting and the managerial uses of control systems and the accounting process. **PREREQUISITE: Business Essentials**

#### **6203 Consumer & Personal Finance (10-12) 0.5 credit**

Designed to provide students with the tools and skills needed to make sound financial decisions throughout their lives. Personal financial planning is the process of managing one's money to achieve personal economic satisfaction. This process involves setting realistic goals and organizing financial activities toward the achievement of the goals. It also depends on the increased control of financial affairs by avoiding excessive debt, building up wealth, and managing financial risk.

#### **6202 Business Economics (10-12) 0.5 credit**

Business Economics integrates economic principles (such as free market economy, consumerism, and the role of American government within the economic system) with entrepreneurship/business concepts (such as marketing principles, business law, and risk).

#### **6200 Business Law (10-12) 0.5 credit**

This course identifies and promotes the skills needed in law and law associated professions. Topics include the origins, ethics, structures, and institutions of law. It concentrates on several types of law including criminal, civil, consumer, contract, property, agency, employment, family and environmental law. The intent of the class is to allow areas of concentration once all the competencies are met.

#### **6216 Entrepreneurship (10-12) 0.5 credit**

##### **DC - WSU Tech**

Entrepreneurship courses acquaint students with the knowledge and skills necessary to own and operate their own businesses. Topics from several fields typically form the course content: economics, marketing principles, human relations and psychology, business and labor law, legal rights and responsibilities of ownership, business and financial planning, finance and accounting, and communication. **PREREQUISITE: Business Essentials.**

### Application-Level Courses

#### **6004 Advanced Accounting (11-12) 0.5 credit**

Advanced Accounting courses expand upon the foundational accounting principles and procedures used in business. Course content typically includes the full accounting cycle, payroll, taxes, debts, depreciation, ledger and journal techniques, and periodic adjustments. Students learn how to apply standard auditing principles and to prepare budgets and final reports. Calculators, electronic spreadsheets, and other automated tools are usually used. Topics may include elementary principles of partnership and corporate accounting and the managerial uses of control systems and the accounting process and further enhancement of accounting skills. **PREREQUISITE: Accounting I.**

# Marketing Career Cluster

## Marketing Pathway

Introduction Courses		
6090	9-11	Business Essentials
Technical Courses		
6214/6215	10-12	Principles of Marketing
6000/6001	10-12	Accounting I
6202	10-12	Business Economics
6216	10-12	Entrepreneurship
6332	10-12	Graphic Design I
6333	10-12	Graphic Design II
6324/6325	10-12	Webpage Design
Application Courses		
6800/6801	12	Marketing Applications

### Introductory-Level Courses

#### **6090 Business Essentials (9-11) 0.5 credit**

This is a core course designed to give students an overview of the business, marketing and finance career-cluster occupations. Students will develop an understanding of how academic skills in mathematics, economics, and written and oral communications are integral components of success in these occupations. Students will examine current events to determine their impact on business and industry and legal and ethical behavior, acquire knowledge of safe and secure environmental controls to enhance productivity, determine how resources should be managed to achieve company goals, and identify employability and personal skills needed to obtain a career and be successful in the workplace. As students learn about different types of business ownership, they will interpret industry laws and regulations to ensure compliance, identify principles of business management, and analyze business practices to determine ethics and social responsibilities.

### Technical-Level Courses

#### **6214/6215 Principles of Marketing (10-12) 1.0 credit**

This course develops student understanding and skills in such areas as channel management, marketing-information management, market planning, pricing, product/service management, promotion, and selling.  
**PREREQUISITE: Business Essentials**

#### **6000/6001 Accounting I (10-12) 1.0 credit**

##### **DC - WSU Tech**

Accounting courses introduce and expand upon the fundamental accounting principles and procedures used in businesses. Course content typically includes the full accounting cycle, payroll, taxes, debts, depreciation, ledger and journal techniques, and periodic adjustments. Students may learn how to apply standard auditing principles and to prepare budgets and final reports. Calculators, electronic spreadsheets, or other automated tools are usually used. Advanced topics may include elementary principles of partnership and corporate accounting and the managerial uses of control systems and the accounting process.  
**PREREQUISITE: Business Essentials**

#### **6202 Business Economics (10-12) 0.5 credit**

Business Economics integrates economic principles (such as free market economy, consumerism, and the role of American government within the economic system) with entrepreneurship/business concepts (such as marketing principles, business law, and risk.

#### **6216 Entrepreneurship (10-12) 0.5 credit**

##### **DC - WSU Tech**

Entrepreneurship courses acquaint students with the knowledge and skills necessary to own and operate their own businesses. Topics from several fields typically form the course content: economics, marketing principles, human relations and psychology, business and labor law, legal rights and responsibilities of ownership, business and financial planning, finance and accounting, and communication. **PREREQUISITE: Business Essentials.**

#### **6332 Graphic Design I (10-12) 0.5 credit**

Graphic designers specialize in creating visual communications using color, type, print, photography, illustrations, animation, and other techniques. The graphic design programs of Adobe InDesign, Photoshop, and Illustrator are used to cover the basics of graphic design. Each of these subjects is covered separately and as they relate together in page architecture. Principles of graphic design cover placement of elements, their balance and alignment, and how proximity changes the relationship to the big picture of the design. Repetition, movement, and the importance of consistency in the design are covered, as well as contrast, white space, and unity in design placement. A variety of projects will be assigned to create a portfolio of student work.  
**PREREQUISITE: Graphic Design Fundamentals.**

#### **6333 Graphic Design II (10-12) 0.5 credit**

Graphic Design II covers contemporary digital design, using interactive media and motion graphics. Topics covered include the design of websites from a graphics viewpoint through Photoshop and web effects that allow students to practice web design techniques through Dreamweaver.  
**Prerequisite: Graphic Design Fundamentals.**

#### **6324/6325 Webpage Design (10-12) 1.0 credit**

This course consists of basic internet navigation, internet searches, and web page construction with a text editor, html, and web design software. Cascading style sheets and basic java scripting are also introduced. Students will work with graphic programs to create content.

### Application-Level Course

#### **6800/6801 Marketing Applications (12)**

Marketing Applications furthers student understanding and skills in the various marketing functions. Students coordinate channel management with other marketing activities, discuss the nature of marketing plans, generate product ideas, coordinate activities in the promotional mix, and demonstrate specialized sales processes and techniques. Economic and financial concepts are also stressed throughout the course. Current technology will be used to acquire information and to complete the projects. Throughout the course, students are presented problem-solving situations for which they must apply academic and critical-thinking skills. Formal reflection is an on-going component of the course along with four projects. **PREREQUISITE: Previous or concurrent enrollment in TECHNICAL LEVEL courses; an approved internship placement in a field associated with the pathway, application, and instructor consent.**

# ENGINEERING CAREER CLUSTER

## Engineering & Applied Mathematics Pathway

Introduction Courses		
4300/4301	10-12	Chemistry I
Technical Courses		
7802/7803	9-12	Engineering Design <i>PLTW</i>
7800/7801	10-12	Principles of Engineering <i>PLTW</i>
Application Courses		
7806/7807	11-12	Aerospace Engineering <i>PLTW</i>
7810/7811	11-12	Civil Engineering & Architecture <i>PLTW</i>
7804/7805	11-12	Digital Electronics (hosted by EHS) <i>PLTW</i>
7814/7815	12	Engineering Design and Development <i>PLTW</i>

### Introductory-Level Courses

#### **6101 Computer Applications I**

#### **Certification Microsoft Word & Power Point (9-12) 0.5 credit**

Students will begin with a pre-test of Microsoft Word and Power Point and work to become proficient in both Microsoft applications. Students have the option to earn certifications in both through TESTOUT Pro. **This is an introductory course for several pathways.**

### Technical-Level Courses

#### **7802/7803 Engineering Design (9-12) 1.0 credit**

#### **Weighted GPA, DC - Wichita State University, PLTW**

Students dig deep into the engineering design process, applying math, science, and engineering standards to hands-on projects. They work both individually and in teams to design solutions to a variety of problems using 3D modeling software and use an engineering notebook to document their work. Students interested in earning college credit with WSU for 2nd semester, need have earned an A or B 1st semester and have a 3.0 cumulative GPA. **PREREQUISITE: Recommended geometry and/or strong Algebra I skills.**

#### **7800/7801 Principles of Engineering (10-12) 1.0 credit PLTW**

Through problems that engage and challenge, students explore a broad range of engineering topics, including mechanisms, the strength of structures and materials, and automation. Students develop skills in problem solving, research, and design while learning strategies for design process documentation, collaboration, and presentation. **PREREQUISITE: Engineering Design and instructor consent.**

### Application-Level Courses

#### **7806/7807 Aerospace Engineering (11-12) 1.0 credit PLTW**

This course propels students' learning in the fundamentals of atmospheric and space flight. As they explore the physics of flight, students bring the concepts to life by designing an airfoil, propulsion system, and rockets. They learn basic orbital mechanics using industry-standard software. They also explore robot systems through projects such as remotely operated vehicles. **PREREQUISITE: ED and POE and instructor consent**

#### **7804/7805 Digital Electronics (11-12) 1.0 credit Weighted GPA, DC - Wichita State University, PLTW**

From smartphones to appliances, digital circuits are all around us. This course provides a foundation for students who are interested in electrical engineering, electronics, or circuit design. Students study topics such as combinational and sequential logic and are exposed to circuit design tools used in industry, including logic gates, integrated circuits, and programmable logic devices. Wichita State University credit will be offered for those who qualify. You will be required to pay tuition and fees and purchase supplementary materials if you take the course for college credit. Students need to have a 3.0 cumulative GPA. **PREREQUISITE: ED and POE and instructor consent. \*class held at EHS**

#### **7810/7811 Civil Engineering & Architecture (11-12) 1.0 credit**

#### **PLTW**

Students learn important aspects of building and site design and development. They apply math, science, and standard engineering practices to design both residential and commercial projects and document their work using 3D architecture design software. **PREREQUISITE: ED and POE and instructor consent.**

#### **7814/7815 Engineering Design and Development (12) 1.0 credit**

#### **Weighted GPA, DC- Wichita State University, PLTW**

The knowledge and skills students acquire throughout PLTW Engineering come together in Engineering Design and Development as they identify an issue and then research, design, and test a solution, ultimately presenting their solution to a panel of engineers. Students apply the professional skills they have developed to document a design process to standards, completing Engineering Design and Development ready to take on any post-secondary program or career. **PREREQUISITE: ED and POE and instructor consent.**

# TRANSPORTATION CAREER CLUSTER

## Mobile Equipment Maintenance Pathway Automotive Service Technology – TC or AAS Wichita State University Tech

CRN	COURSE NAME	CREDITS
TAS 136	Suspension and Steering I	3.00
TAS 137	Suspension and Steering II	2.00
TAS 124	Electrical I	3.00
TAS 125	Electrical II	5.00
TAS 126	Manual Transmission/Transaxle & Drive Train	4.00
CED 101	Computer Essentials	2.00
PDV 105	Global Professional Standards	2.00
TAS 121	Engine Repair	4.00
TAS 131	Engine Performance I	3.00
TAS 132	Engine Performance II	5.00
TAS 133	Brakes I	3.00
TAS 134	Brakes II	1.00
TAS 135	Automotive Computer Systems	3.00
MTH 020	Math Fundamentals	3.00
TAS 127	Automatic Transmission Repair	4.00
TAS 128	Heating & Air Conditioning	4.00

**Note: These *WSU Tech* courses combine for 3-hour, 2-semester blocks hosted by Goddard USD 265 taught by a WSU Tech instructor. These courses are large portion of the course required for a WSU Tech Technical Certificate or Associates of Applied Science in Automotive Service Technology.**

### WSU Tech (Goddard Campus)

9130/9131 for MORNING section (hours 1-3)

Use these enrollment numbers if you are a year-one student

9138/9139 for AFTERNOON section (hours 5-7)

Use these enrollment numbers if you are a year-two student




Student Name \_\_\_\_\_ High School \_\_\_\_\_

Date of Birth \_\_\_\_\_ Phone Number \_\_\_\_\_ E-mail \_\_\_\_\_

Gender: Male \_\_\_ Female \_\_\_ Anticipated Graduation MM/YYYY \_\_\_\_\_ Overall HS GPA \_\_\_\_\_

Ethnicity(Circle): Asian| African Amer.| Hispanic Amer.| Amer. Indian| White| Unknown| Native Hawaiian/Pacific Island

Home Address \_\_\_\_\_

Street City Zip

Block Program: \_\_\_\_\_ AM or PM (circle)

This JumpStart Enrollment Form must be completed and certified by the School Counselor at the high school where the student is enrolled. The purpose is to recommend a student for enrollment to the JumpStart program at WSU Tech in accordance with the admission requirements outlines in the JumpStart eligibility requirements.

Please acknowledge that you have read the below statements by making a \_\_\_\_\_ on the line provided.

\_\_\_\_\_ I acknowledge that I am taking the selected courses for college credit through WSU Tech. A course syllabus will be provided for each college course by the instructor.

\_\_\_\_\_ I acknowledge that coursework will be at a college level and that I must complete all coursework.

Attendance Requirements:

It is the student's responsibility to attend all classes in which he/she is enrolled. High school students are responsible for completing the proper college process and notifying their high school counselor if they choose to withdraw from a course. Students are responsible for following WSU Tech Student Code of Conduct found on the WSU Tech website.

Student Signature \_\_\_\_\_ Date \_\_\_\_\_

Parent/Guardian Signature \_\_\_\_\_ Date \_\_\_\_\_

---

FOR USE BY SCHOOL COUNSELOR

Registration for term:  FALL (Aug - Dec)  Spring (Jan - May)

For questions or concerns please contact Jena Roth, Associate Dean of High School Partnerships at WSU Tech. Contact information for e-mail and phone number are jroth2@watu.edu and (316)677-1069.

Student is approved to take credit hours during the term selected above.

School Counselor Signature \_\_\_\_\_ Date \_\_\_\_\_

### (11-12) 1.5 high school credits per semester

The Automotive Service Technology program allows students to gain skills and knowledge to accurately diagnose, repair and service various automotive vehicles. Program includes classroom and lab instruction in safety, electrical and electronic systems, suspension and steering, engine performance, manual drive train and axles, heating and air conditioning, engine repair and brakes. Program has National Automotive Technicians Education Foundation accreditation at the secondary and post-secondary levels. **PREREQUISITES: First time students must apply for admission to WSU Tech at [www.wsutech.edu](http://www.wsutech.edu) (create profile & apply). A WSU Tech JumpStart form signed by the student, counselor, and parent is needed EACH semester of enrollment.**

The JumpStart form can be downloaded from Career Cruising, the GHS Counseling website (under Enrollment), or at the back of this enrollment guide.



# Education & Training Career Cluster

## Teaching & Training Pathway

Introduction Courses		
GMS course	7-8	Introduction to Family & Consumer Science
7102 or GMS	7-12	Career & Life Planning
Technical Courses		
7205	10-12	Human Growth & Development A
7210	10-12	Family Studies
9798/9799	11-12	Teaching as a Career
9801	11-12	Teacher Observation
Application Courses		
See application	12	Teaching Internship

### Introductory-Level Courses

#### **7102 Career and Life Planning (9-10) 0.5 credit**

Self-Management courses introduce students to the skills and strategies helpful in becoming more focused, productive individuals. These courses typically emphasize goal setting; decision-making; managing time, energy, and stress; and identifying alternatives and coping strategies. They may also allow students to explore various career and lifestyle choices. **This is an introductory course for several pathways. Do not repeat if you took Career and Life Planning in middle school.**

### Technical-Level Courses

#### **7205 Human Growth & Development A (10-12) 0.5 credit**

##### **DC - Wichita State University**

Designed for the student interested in children. Interest may be related to a career in caring for or teaching children, being a parent someday or interacting with other people's children. The class will study health issues and choices, prenatal development and complications that may arise during pregnancy and delivery. The stages of child development and discipline, up to one year of age will be covered. Specialty areas that are also covered are the roles of parents in various family structures, child abuse and neglect, and children with special needs. The students will be assigned a computer baby to take care of for a given time to experience the responsibility of parenting.

#### **7210 Family Studies A (10-12) 0.5 credit**

##### **DC - Wichita State University**

Designed to introduce the student to life planning skills for present and future. Students learn about reaching their potential through looking at a close-up view of themselves, their attitudes toward living and developing decision making skills. Topics also covered are relating to other people by developing effective communication skills, developing skills for group interaction, relationships, dating, preparation for marriage and adjusting to marriage. Students plan a mock wedding.

#### **9801 Teaching Observation (11-12) 0.5 credit**

##### **DC - Wichita State University**

Teaching observation courses build upon the understanding of the requirements of the teaching profession through student observations and study of best practices in multiple classroom settings. Observation analysis will be focused around the elements of effective instruction – planning and preparation, the learning environment, instructional strategies, and teacher/trainer professional responsibilities. Students will explore/observe career options available at the Pre-K-8 levels of education available in the Goddard USD 265 School District including Parents as Teachers (0-36 months), Pre-school, K-12, and the post-secondary options and partnership schools. Students will be expected to observe the context of the course, objectives of the lessons, and discuss the purpose of the observations. While observing, students will become familiar with the developmental stages of the learner throughout, as well as become knowledgeable with the Common Core Standards, the state's assessment program, professional development, and research-based strategies that affect the school learning environment. Each day the student will check in and out with their cooperating teacher, along with documenting their observations. This course is designed to be a precursor for Teaching Internship in the spring. **PREREQUISITE: Previous or concurrent enrollment in Teaching as a Career and instructor consent. Seniors must provide their own transportation to and from placement.**

#### **9798/9799 Teaching as a Career (11-12) 1.0 credit**

##### **DC - Wichita State University**

Students will explore career options available at the Pre-K-16 levels of education available in the Goddard USD 265 School District including the Parents as Teachers (0-36 months), Pre-school, K-12, and the post-secondary options and partnership schools. Students will become familiar with the developmental stages of the learner throughout, as well as become knowledgeable with the Common Core Standards, the state's assessment program, and research-based strategies that affect the school learning environment as well as instructionally and resources available. **PREREQUISITE: Human Growth and Development.**

### Application-Level Courses

#### **Teaching Internship (12)**

##### **DC - Wichita State University**

Education—Workplace Experience courses provide students with work experience in fields related to education. Goals are typically set cooperatively by the student, teacher, and employer (although students are not necessarily paid). These courses may include classroom activities as well, involving further study of the field or discussion regarding experiences that students encounter in the workplace. **PREREQUISITE: Previous or concurrent enrollment in Teaching as a Career; application; and instructor consent (Mrs. Dimick). Seniors may choose a PreK-5 program either in Goddard USD 265 or in another district. For each hour of release (up to 3 hours) seniors will record 5 hours of on-site time. For each hour of release seniors will receive 0.5 credits. Seniors must provide their own transportation to and from and turn in weekly documentation during PRIDE.**

# Human Services Career Cluster

## Early Childhood Development & Services Pathway

### Introduction Courses

GMS course	7-8	Introduction to Family & Consumer Science
7102 or GMS	7-12	Career & Life Planning

### Technical Courses

7205	10-12	Human Growth & Development A
7210	10-12	Family Studies
7206/7207	10-12	Foundations to Early Childhood Development

### Application Courses

7208/7209	12	Early Childhood Application (1-hour internship)
See application	12	Career Connections - (paid or unpaid internship up to 3 release hours)

## Introductory-Level Courses

### 7102 Career and Life Planning

(9-10) 0.5 credit

Self-Management courses introduce students to the skills and strategies helpful in becoming more focused, productive individuals. These courses typically emphasize goal setting; decision-making; managing time, energy, and stress; and identifying alternatives and coping strategies. They may also allow students to explore various career and lifestyle choices. **This is an introductory course for several pathways. Do not repeat if you took Career and Life Planning in middle school.**

## Technical-Level Courses

### 7205 Human Growth & Development A

(10-12) 0.5 credit

DC - Wichita State University

Human Growth and Development A provides students with knowledge about the physical, mental, emotional, and social growth and development of humans from conception to old age, with a special emphasis on birth through school age. Course content will provide an overview of life stages, with a strong tie to prenatal and birth processes; fundamentals of children's emotional and physical development; and the appropriate care of children. During this course, the students will participate in the Real Care Baby project.

### 7210 Family Studies A

(10-12) 0.5 credit

DC - Wichita State University

Developing a life-management plan for life beyond high school; caring for self and others; and planning to assure career success and coordinating personal and career responsibilities. Personal life choices made now and throughout life determine quality of life. Topics also covered are relating to other people by developing effective communication skills, developing skills for group interaction, relationships, dating, preparation for marriage and adjusting to marriage. Students plan a mock wedding.

### 7206/7207

### Foundations of Early Childhood Development (10-12) 1.0 credit

Designed for the student interested in children. The class will study the development of the child ages one to five. The stages of child development and discipline, up to preschool age will be covered. Specialty areas that are also covered are the roles of parents in various family structures, child abuse and neglect, and children with special needs. **PREREQUISITE: Human Growth and Development and instructor consent.**

## Application-Level Courses

### 7208/7209 Early Childhood Application

(12) 1.0 credit

Child and Elder Care—Workplace Experience courses provide students with work experience in fields related to caring for others. Goals are typically set cooperatively by the student, teacher, and employer (although students are not necessarily paid). These courses may include classroom activities as well, involving further study of the field or discussion regarding experiences that students encounter in the workplace.

**PREREQUISITE: Previous or concurrent enrollment in Foundations to Early Child Development and Human Growth and Development, Application may be found under IMPORTANT DOCUMENTS in Career Cruising, on the ENROLLMENT tab on the Counseling website, or obtained from Mrs. Dimick. Seniors must provide their own transportation to and from and turn in weekly documentation during PRIDE.**

### Career Connections (12)

**Course #s are specific to release hours – see application for the correct enrollment numbers**

Career Connections courses provide human services/family and consumer sciences related work-based learning experiences (paid or unpaid) outside the traditional classroom. Learning goals are determined by the student, teacher, and employer/adult mentor to create field experiences and/or discussions related to human services/ family and consumer sciences occupational technical skill. **PREREQUISITE: Application (found under IMPORTANT DOCUMENTS in Career Cruising, on the ENROLLMENT tab on the Counseling website, or obtained from Ms. Mrs. Dimick). Seniors must provide their own transportation to and from and turn in weekly documentation during PRIDE. NOTE: Release hours must be consecutive (i.e. hours 5, 6, 7 or 1, 6, 7). Five (5) contact hours are required for each one (1) hour of release with a MAXIMUM of 3 release hours.**

# Human Services Career Cluster

## Family, Community & Consumer Services Pathway

Introduction Courses		
GMS course	7-8	Introduction to Family & Consumer Science
7102 or GMS	7-12	Career & Life Planning
Technical Courses		
7010	9-12	Culinary Essentials
6203	10-12	Consumer & Personal Finance
7210	10-12	Family Studies
7205	10-12	Human Growth & Development A
Application Courses		
See application	12	Career Connections - (paid or unpaid internship up to 3 release hours)

### Introductory-Level Courses

#### **7102 Career and Life Planning (9-10) 0.5 credit**

Self-Management courses introduce students to the skills and strategies helpful in becoming more focused, productive individuals. These courses typically emphasize goal setting; decision-making; managing time, energy, and stress; and identifying alternatives and coping strategies. They may also allow students to explore various career and lifestyle choices. **This is an introductory course for several pathways. Do not repeat if you took Career and Life Planning in middle school.**

### Technical-Level Courses

#### **7010 Culinary Essentials (9-12) 0.5 credit**

First, in a sequential program that prepares students for occupations and higher education programs of study related to culinary arts and hospitality industry. This class will give students the opportunity to earn a food handlers card while gaining basic kitchen knowledge. Skill-focused labs will be used to reinforce understanding of concepts.

#### **6203 Consumer & Personal Finance (10-12) 0.5 credit**

Designed to provide students with the tools and skills needed to make sound financial decisions throughout their lives. Personal financial planning is the process of managing one's money to achieve personal economic satisfaction. This process involves setting realistic goals and organizing financial activities toward the achievement of the goals. It also depends on the increased control of financial affairs by avoiding excessive debt, building up wealth, and managing financial risk.

#### **7210 Family Studies A (10-12) 0.5 credit DC - Wichita State University**

Designed to introduce the student to life planning skills for present and future. Students learn about reaching their potential through looking at a close-up view of themselves, their attitudes toward living and developing decision making skills. Topics also covered are relating to other people by developing effective communication skills, developing skills for group interaction, relationships, dating, preparation for marriage and adjusting to marriage. Students plan a mock wedding.

#### **7205 Human Growth & Development A (10-12) 0.5 credit**

##### **DC - Wichita State University**

Designed for the student interested in children. Interest may be related to a career in caring for or teaching children, being a parent someday or interacting with other people's children. The class will study health issues and choices, prenatal development and complications that may arise during pregnancy and delivery. The stages of child development and discipline, up to one year of age will be covered. Specialty areas that are also covered are the roles of parents in various family structures, child abuse and neglect, and children with special needs. The students will be assigned a computer baby to take care of for a given time to experience the responsibility of parenting.

### Application-Level Course

#### **Career Connections (12)**

**Course #s are specific to release hours – see application for the correct enrollment numbers**

Career Connections courses provide human services/family and consumer sciences related work-based learning experiences (paid or unpaid) outside the traditional classroom. Learning goals are determined by the student, teacher, and employer/adult mentor to create field experiences and/or discussions related to human services/ family and consumer sciences occupational technical skill. **PREREQUISITE:**

**Application (found under IMPORTANT DOCUMENTS in Career Cruising, on the ENROLLMENT tab on the Counseling website, or obtained from Ms. Mrs. Dimick). Seniors must provide their own transportation to and from and turn in weekly documentation during PRIDE. NOTE: Release hours must be consecutive (i.e. hours 5, 6, 7 or 1, 6, 7). Five (5) contact hours are required for each one (1) hour of release with a MAXIMUM of 3 release hours.**

# *Hospitality & Tourism Career Cluster*

## *Restaurant & Event Management Pathway*

### *Culinary Arts and Management Strand*

Introduction Courses		
7102 or GMS	7-12	Career & Life Planning
GMS course	7-8	Introduction to Family Consumer Science
6090	9-12	Business Essentials
Technical Courses		
7010	9-12	Culinary Essentials
7013	9-12	Baking & Pastry I
7011/7012	10-12	Culinary Arts I
6216	10-12	Entrepreneurship
6214/6215	10-12	Principles of Marketing
Application Courses		
7014/7015	11-12	Culinary Applications
See application	12	Career Connections - (paid or unpaid internship up to 3 release hours)

### Introductory-Level Courses

#### **7102 Career and Life Planning (9-10) 0.5 credit**

Self-Management courses introduce students to the skills and strategies helpful in becoming more focused, productive individuals. These courses typically emphasize goal setting; decision-making; managing time, energy, and stress; and identifying alternatives and coping strategies. They may also allow students to explore various career and lifestyle choices. **This is an introductory course for several pathways. Do not repeat if you took Career and Life Planning in middle school.**

### Technical-Level Courses

#### **7010 Culinary Essentials (9-12) 0.5 credit**

First, in a sequential program that prepares students for occupations and higher education programs of study related to culinary arts and hospitality industry. This class will give students the opportunity to earn a food handlers card while gaining basic kitchen knowledge. Skill-focused labs will be used to reinforce understanding of concepts.

#### **7013 Baking and Pastry I (9-12) 0.5 credit**

This course is designed to give students a higher exploration of baking science related to cookies, cakes, pies, pastry, quick and yeast breads. **PREREQUISITE: Culinary Essentials.**

#### **7011/7012 Culinary Arts I (10-12) 1.0 credit**

##### **DC - Flint Hills**

Students will demonstrate knowledge within culinary arts and the role of the professional chef. They will apply safe and sanitary procedures in food preparation and production. Students will learn proper knife skills, cuts, and the use of various culinary tools and commercial food production equipment. In addition, students will develop a foundation in culinary techniques, principles and the ability to develop the senses to properly season and flavor food. Students will also demonstrate the ability to identify classes of products and proper cooking methods for dairy, eggs, meats, and poultry **PREREQUISITE: Culinary Essentials and instructor consent.**

#### **6214/6215 Principles of Marketing (10-12) 1.0 credit**

This course is suggested to support a career in this field. Complete the technical and application levels first. **PREREQUISITE: Business Essentials**

#### **6216 Entrepreneurship (10-12) 0.5 credit**

##### **DC - WSU Tech**

**NOTE:** This course is suggested to support a career in this field. Complete the technical and application levels first. **PREREQUISITE: Business Essentials.**

### Application-Level Courses

#### **7014/7015 Culinary Applications (11- 12) 1.0 credit**

This course applies the skills needed in the culinary arts profession. It includes the application of skills within a school-based experience or work-based internship and will cover an introduction of all aspects of an industry. Students enrolled in this course are expected to have mastered skills in the culinary field so that they can apply them in authentic experiences following industry standards and regulations. **PREREQUISITE: Previous enrollment in Culinary I.**

#### **Career Connections (12)**

##### **Course #s are specific to release hours – see application**

Career Connections courses provide human services/family and consumer sciences related work-based learning experiences (paid or unpaid) outside the traditional classroom. Learning goals are determined by the student, teacher, and employer/adult mentor to create field experiences and/or discussions related to human services/ family and consumer sciences occupational technical skill. **PREREQUISITE: A completed application, which includes: an approved internship placement in a field associated with the pathway, previous or concurrent enrollment in a TECHNICAL or APPLICATION- LEVEL in the CTE Pathway (Culinary), and instructor consent (Ms. Cox). The application must be turned in to Ms. Cox prior to enrolling in Career Connections. Seniors must provide their own transportation to and from and turn in weekly documentation during PRIDE.** **NOTE:** Release hours must be consecutive (i.e. hours 5, 6, 7 or 1, 6, 7). Five (5) contact hours are required for each one (1) hour of release with a MAXIMUM of 3 release hours.

# Human Services Career Cluster

## Fashion & Apparel Design (FAID) Pathway

### Introduction Courses

7102 or GMS	7-12	Career & Life Planning
8500	7-12	Introduction to Drawing
GMS course	7-8	Introduction to Family & Consumer Science

### Technical Courses

8600	9-12	Essentials of Fashion, Apparel and Interior Design
8622	9-12	Fashion Trends
7300	9-12	Apparel Production I
7301	10-12	Apparel Production II

### Application Courses

8620/8621	10-12	Fashion, Apparel and Interior Design (FAID) Studio
See application	12	Career Connections - (paid or unpaid internship up to 3 release hours)

### Introductory-Level Courses

#### **8500 Intro to Drawing (9-12) 0.5 credit**

Introduction to Drawing emphasizes the development of fundamental drawing skills. Focus will be on the application of art theory, processes and techniques that increase the power of observation. Instruction includes the elements and principles of design as applied in composition through hard copy and/or electronic software. **This course is the equivalent of Intro to Art or Intro to Drawing in middle school. Do not repeat course.**

### Technical-Level Courses

#### **8600 Essentials of Fashion, Apparel, Interior & Design (9-12) 0.5 credit**

##### **DC- WSU Tech**

This course introduces students to and expands upon the various aspects of industry, conveying the commercial application of principles and elements of design, production processes, and maintenance techniques to meet the design needs of humans. This course will also provide a discussion and exploration of career opportunities in interior, textiles and set/exhibit design. **HIGHLY RECOMMENDED: Intro to Drawing or Principles of Illustration I.**

#### **8622 Fashion Trends (9-12) 0.5 credit**

Fashion Trends examine special topics in apparel that meet the needs of humans now and projected in the future rather than providing a general study. Topics include sustainable design and apparel for diverse populations and how trends are developed. Additional topics may be generated as trends are identified. **PREREQUISITE: Essentials of Fashion, Apparel, & Interior Design.**

#### **7300 Apparel Production I (9-12) 0.5 credit**

Students will receive information and practice basic sewing skills. Projects will consist of a multitude of small items like ornaments, cards, holiday bags and seam samples. Bigger projects include making a pillow case, an easy fleece blanket or pillow, and a pattern project (apron or pajama pants). Students will also use the computerized sewing machine to embroidery on projects or other items. Materials for the projects will be the responsibility of the students. Information in an accessible, hands-on format so learning can be rapid and in-depth.

#### **7301 Apparel Production II (10-12) 0.5 credit**

Students will receive information and practice advanced knowledge and skills required for careers in fashion, apparel and textiles. **PREREQUISITE: Apparel Production I.**

### Application-Level Course

#### **8620/8621**

#### **Fashion, Apparel & Interior & Textile Design Studio (10-12) 1.0 credit**

Provides students with the opportunity to expand knowledge and experience with 4-dimensional design forms as they relate to human needs. Topics will include the language, materials and processes used to apply the design elements and principles based upon designers, periods and styles. As students advance and become more adept, the instruction regarding the creative process becomes more refined and students are encouraged to develop their own design styles to meet the needs of a client. This application course is client driven in the interior, textile or apparel fields. **PREREQUISITE: Essentials of Fashion, Apparel, & Interior Design.**

#### **Career Connections (12)**

#### **Course #s are specific to release hours – see application for the correct enrollment numbers**

Career Connections courses provide human services/family and consumer sciences related work-based learning experiences (paid or unpaid) outside the traditional classroom. Learning goals are determined by the student, teacher, and employer/adult mentor to create field experiences and/or discussions related to human services/ family and consumer sciences occupational technical skill. **PREREQUISITE: A completed application, which includes: an approved internship placement in a field associated with the pathway, previous or concurrent enrollment in a TECHNICAL or APPLICATION- LEVEL in the CTE Pathway (Interior/Fashion Design), and instructor consent (Mrs. Huffman). The application must be turned in to Mrs. Huffman prior to enrolling in Career Connections. Seniors must provide their own transportation to and from and turn in weekly documentation during PRIDE.**

**NOTE: Release hours must be consecutive (i.e. hours 5, 6, 7 or 1, 6, 7). Five (5) contact hours are required for each one (1) hour of release with a MAXIMUM of 3 release hours.**

# Information Technology Career Cluster

## Network Systems Pathway

Introduction Courses		
GMS course	7-8	Computer Applications
6101	9-12	Computer Applications I (Certifications Microsoft Word & Power Point)
Technical Courses		
6651	10-12	IT Essentials: PC Hardware & Software
6681	10-12	Network Infrastructures & Routing Essentials
6660	10-12	Wireless Networking
6670	11-12	Network Security
Application Courses		
6690/6691	12	Applied Concepts of Networking (1-hour internship)

### Introductory-Level Courses

#### **6101 Computer Applications I Certification Microsoft Word & Power Point (9-12) 0.5 credit**

Students will begin with a pre-test of Microsoft Word and Power Point and work to become proficient in both Microsoft applications. Students have the option to earn certifications in both through TESTOUT Pro. **This is an introductory course for several pathways.**

### Technical-Level Courses

#### **6651 IT Essentials – PC Hardware & Software (10-12) 1.0 credit**

This course provides students with the knowledge to become industry certified as a PC technician. This **TestOut PC Pro Certification** measures the ability to install, manage, repair, and troubleshoot PC hardware and Windows operating system software. **PREREQUISITE: Must receive approval by application from Ms. Cross.**

#### **6681 Network Infrastructures & Routing Essentials (10-12) 1.0 credit**

Networking Infrastructure & Routing Essentials covers the architecture, components, and operations of routers and switches in a small network. Students learn how to configure a router and a switch for basic functionality. By the end of the course, students will be able to: Determine how a router will forward traffic based on the contents of a routing table. Explain how switching operates in a small to medium-sized business network. Use monitoring tools and network management protocols to troubleshoot data networks. Configure monitoring tools available for small to medium-sized business networks. Configure initial settings on a network device. Configure Ethernet switch ports. Implement VLANs. Implement static routing. Implement DHCP on a router. Implement network address translation (NAT). Implement access control lists (ACLs) to filter traffic. **PREREQUISITE: IT Essentials.**

#### **6660 Wireless Networking (10-12) 1.0 credit**

This course focuses on the design, planning, implementation, operation, and trouble-shooting of wireless computer networks. This course includes a comprehensive overview of best practices in technology, security, and design, with emphasis on hands-on skills in 1) wireless LAN set-up and troubleshooting; 2) technologies, products, and solutions; 3) site surveys; 4) resilient WLAN design, installation, and configuration; 5) vendor interoperability strategies; and 6) wireless bridging.

**PREREQUISITE: IT Essentials and Network Infrastructures & Routing.**

#### **6670 Network Security (11-12) 1.0 credit**

This course teaches students how to design and implement security measures to reduce the risk of data vulnerability and loss. Course content includes typical security policies; firewall design, installation, and management; secure router design, configuration, and maintenance; and security-specific technologies, products, and solutions. **PREREQUISITE: Wireless Networking.**

**Certification in TestOut's Security Pro, CompTIA's Security+ or (ISC) SSCP.**  
**PREREQUISITE: IT Essentials**

### Application-Level Course

#### **6690/6691 Applied Concepts of Networking (12) 1.0 credit**

This course provides students with work experience in fields related to networking systems. Goals are set cooperatively by student, teacher, and employer. **PREREQUISITE: IT Essentials, Wireless Networking & Security and a completed application, which includes: an approved internship placement in a field associated with the pathway, previous or concurrent enrollment in a TECHNICAL or APPLICATION-LEVEL in the CTE Pathway (Networking), and instructor consent (Mr. Weber).**

# Information Technology Career Cluster

## Programming & Software Development Pathway

Introduction Courses		
GMS course	7-8	Introduction to Computer Coding – App Creators
GMS course	7-8	Computer Applications
6101	9-12	Computer Applications I (Certifications Microsoft Word & Power Point)
Technical Courses		
6500/6501	9-12	Computer Programming
6106/6107	9-12	Database Applications – Certifications for Microsoft Access
6324/6325	10-12	Web Page Design
7816/7817	11-12	AP Computer Science Principles (hosted by EHS) <i>PLTW</i>
Application Courses		
6506/6507	10-12	Particular Topics in Computer Programming – C++

### Introductory-Level Courses

#### **6101 Computer Applications I Certification Microsoft Word & Power Point (9-12) 0.5 credit**

Students will begin with a pre-test of Microsoft Word and Power Point and work to become proficient in both Microsoft applications. Students have the option to earn certifications in both through TESTOUT Pro. **This is an introductory course for several pathways.**

#### **6102 Computer Applications II – Certification Microsoft Excel (10-12) 0.5 credit**

Windows 7 and Microsoft Office 2013 (Advanced Word Processing, Excel spreadsheets, Publisher, PowerPoint, and Beginning Access Database will be explored. Samples of projects students will learn to create, and plan are: brochures, budgeting, charting, desktop publishing, Internet, investing, inventory, mailing lists, media presentations, merging letters, payment schedules and reports. Students will also learn to integrate word processing, spreadsheets and databases. **PREREQUISITE: Computer Applications I & instructor consent.**

#### **6106/6107 Database Applications – Certification Microsoft Access (11-12) 1.0 credit**

Database Applications introduces database software (Access). Students will learn to design, create, and manipulate databases currently used in business and industry. Students will get an overview of database management and an understanding of fundamental theory. Hands-on work will be emphasized. **PREREQUISITE: Computer Applications II & instructor consent.**

### Technical-Level Courses

#### **6324/6325 Webpage Design (10-12) 1.0 credit**

This course consists of basic internet navigation, internet searches, and web page construction with a text editor, html, and web design software. Cascading style sheets and basic java scripting are also introduced. Students will work with graphic programs to create content.

#### **6500/6501 Computer Programming (9-12) 1.0 credit**

Students will study computer systems, top down programming methodology, data types and structures, and the social implications of computing. The programming language used will be Visual Basic. **9th grade prerequisite = Computer Science 1 and concurrent enrollment in Geometry and/or instructor approval.**

#### **6506/6507 Particular Topics in Computer Programming (C++) (10-12) 1.0 credit**

Designed to teach C++ programming language. Students will write, debug, and compile programs. Students will also study logic, flow charts, and programming history. Students should have a solid background in a higher-level math course and have strong problem-solving skills. **PREREQUISITE: Computer Programming**

### Application-Level Courses

#### **7816/7817 AP Computer Science Principles (11-12) 1.0 credit**

##### **AP credit, weighted GPA**

Using Python® as a primary tool and incorporating multiple platforms and languages for computation, this course aims to develop computational thinking, generate excitement about career paths that utilize computing, and introduce professional tools that foster creativity and collaboration. While this course can be a student's first in computer science, students without prior computing experience are encouraged to start with Introduction to Computer Science. Computer Science Principles helps students develop programming expertise and explore the workings of the Internet. Projects and problems include app development, visualization of data, cybersecurity, and simulation. PLTW is recognized by the College Board as an endorsed provider of curriculum and professional development for AP® Computer Science Principles (AP CSP). This endorsement affirms that all components of PLTW CSP's offerings are aligned to the AP Curriculum Framework standards and the AP CSP assessment. **PREREQUISITE: Computer Programming plus either: C++ Programming, Web Page Design, or Graphic Design.**

# Information Technology Career Cluster

## Web & Digital Communications Pathway

### Introduction Courses

GMS course 6101	7-8	Computer Applications
	9-12	Computer Applications I (Certifications Microsoft Word & Power Point)

### Technical Courses

6500/6501	9-12	Computer Programming
6324/6325	10-12	Web Page Design
6332	10-12	Graphic Design I
6333	10-12	Graphic Design II

### Application Courses

6514/6515	11-12	Game Design & Authoring for the Web
-----------	-------	-------------------------------------

### Introductory-Level Courses

#### **6101 Computer Applications I Certification Microsoft Word & Power Point (9-12) 0.5 credit**

Students will begin with a pre-test of Microsoft Word and Power Point and work to become proficient in both Microsoft applications. Students have the option to earn certifications in both through TESTOUT Pro. **This is an introductory course for several pathways.**

### Technical-Level Courses

#### **6500/6501 Computer Programming (9-12) 1.0 credit**

Students will study computer systems, top down programming methodology, data types and structures, and the social implications of computing. The programming language used will be Visual Basic. **9th grade prerequisite = Computer Science 1 and concurrent enrollment in Geometry and/or instructor approval.**

#### **6324/6325 Webpage Design (10-12) 1.0 credit**

This course consists of basic internet navigation, internet searches, and web page construction with a text editor, html, and web design software. Cascading style sheets and basic java scripting are also introduced. Students will work with graphic programs to create content.

#### **6332 Graphic Design I (10-12) 0.5 credit**

Graphic designers specialize in creating visual communications using color, type, print, photography, illustrations, animation, and other techniques. The graphic design programs of Adobe InDesign, Photoshop, and Illustrator are used to cover the basics of graphic design. Each of these subjects is covered separately and as they relate together in page architecture. Principles of graphic design cover placement of elements, their balance and alignment, and how proximity changes the relationship to the big picture of the design. Repetition, movement, and the importance of consistency in the design are covered, as well as contrast, white space, and unity in design placement. A variety of projects will be assigned to create a portfolio of student work. **PREREQUISITE: Graphic Design Fundamentals or instructor consent.**

#### **6333 Graphic Design II (10-12) 0.5 credit**

Graphic Design II covers contemporary digital design, using interactive media and motion graphics. Topics covered include the design of websites from a graphics viewpoint through Photoshop and web effects that allow students to practice web design techniques through Dreamweaver. **Prerequisite: Graphic Design Fundamentals or instructor consent.**

### Application-Level Course

#### **6514/6515 Game Design/Authoring for the Web (11-12) 1.0 credit**

Students demonstrate basic programming, design process, locate objects using rectangular coordinates, and unify art and story. Certifications include program structure, if/then statements, for/next statements, arrays, textures, and sounds. The entire process is done under an intern simulation environment. **PREREQUISITE: Computer Programming plus either: C++ Programming, Web Page Design, or Graphic Design**

# Law, Public Safety, Corrections & Security Career Cluster

## Corrections, Security, Law, & Law Enforcement Services Pathway

### Law Enforcement Strand

Introduction Courses		
3700	9-10	Introduction to Law, Public Safety, and Security (LPSS)
Technical Courses		
9599	9-12	Health (First Aid/CPR/EMR)
3702/3703	10-12	Law Enforcement I
4602/4603	11-12	Forensic Science Comprehensive
Application Courses		
3704/3705	11-12	Law Enforcement II

### Introduction-Level Course

#### **3700 Introduction to LPSS (9-10) 0.5 credit**

In Intro to LPSS (Law, Public Safety, Security), you will be introduced to the world of law enforcement. Students will learn about the types of careers available in this field. Students will have the opportunity to hear from guest speakers in the field and learn about the different characteristics a person in one of these careers needs to possess, as well as possibly attend field trips related to law enforcement. Some of the other requirements of the class will be identifying your basic freedoms, differentiating between civil and criminal laws, understanding cybercrime, and OSHA general safety certification. Some hands-on activities like traffic stops and handcuffing will be introduced. An officer from the USD 265 Police Department will help teach the class. Sophomores can earn one college credit for OSHA completion.

### Technical-Level Courses

#### **9599 Health (First Aid/CPR/EMR) (9-12) 0.5 credit**

Provides information as a basis for making healthy decisions. Information on drug and alcohol education, tobacco education, relationships and communication, nutrition, wellness, fitness, personality, mental health, teenage stress, infectious disease, chronic diseases and sexually transmitted diseases will be presented. Students will also receive instruction in the requirements and skills to obtain national certifications for First Aid, CPR and Emergency Medical Responder.

#### **3702/3703 Law Enforcement I (10-12) 1.0 credit**

##### **Social science elective credit, DC - WSU Tech**

The first of two courses designed to provide students with the skills and knowledge necessary to obtain entrance to the Law Enforcement or Highway Patrol Academy. Law Enforcement I will look at the nature of crime, law, and criminal justice. We will also examine topics such as the police, law enforcement, and maintaining custody of prisoners. Students will learn about the legal issues relating to search and seizure. One focus of the class will be on careers in this field. In addition, guest speakers and field trips will be utilized to teach students about their future career options. You will get the opportunity to attempt some hands-on learning of the skills needed by law enforcement. Examples include traffic stops, handcuffing and pat downs, crime reports, and dealing with suspicious persons. Students may earn college credit through WATC as well as participate in SkillsUSA.

#### **4602/4603 Forensic Science Comprehensive**

##### **(11-12) 1.0 credit**

##### **NCAA, Dual Credit Wichita Area Technical College**

An application level course that follows a comprehensive background in biology and chemistry and provides students with knowledge and skills needed to pursue postsecondary training in LPSS careers requiring Forensic Science (i.e., Forensic Anthropology, Forensic Medicine, and Medical Examiner). This course covers additional topics from those covered in the .5 credit version.

**PREREQUISITE: Physical Science, Life Science and/or Biology and science teacher recommendation.**

### Application-Level Course

#### **3704/3705 Law Enforcement II**

##### **(11-12) 1.0 credit**

##### **DC - WSU Tech**

Law Enforcement 2 will continue many of the concepts discussed in Law Enforcement 1. You will be introduced to the legal system, criminal law and juvenile justice, individual rights and liberties, and work on communication, technology, and career development skills. You will also help with the SAFE program and participate in SkillsUSA. One focus of the class will be on careers in this field. In addition, guest speakers and field trips will be utilized to teach students about their future career options. You will get the opportunity to continue practicing the skills needed by law enforcement that were introduced in Law Enforcement 1. **PREREQUISITE: Law Enforcement I.**

# Other Experiences *TAs/Office Assistants/Math Tutors*

## Teacher Assistant (11-12) 1.0 credit

**\*\*9998 (1st semester) \*\*9999 (2nd semester)**

Instructors will have students do a variety of tasks, depending upon the subject matter and hour of day. Students must be responsible, possess self-initiative, and may need specific knowledge of the subject area in which they are assisting. Credit/no credit only. **PREREQUISITE: Must receive a TICKET from the teacher.**

## 9805/9806 Library Science

**(10-12) 1.0 credit**

This is a graded, elective course. Good reading and computer skills, as well as the desire to help others with academic and pleasure reading sources are requirements of this class. A love of books, literature, a goal of life-long learning and a passion for libraries and what they stand for are all encouraged. This course will provide on-the-job training, good work experience, and a full, more global understanding of librarianship for future employment. **PREREQUISITE: Pick up application from Mrs. Locke and return by February 8. Interviews will be completed by February 15.**

## 9803/9804 Counselors' Office

**(11-12) 1.0 credit**

Must be congenial, responsible and capable of completing duties assigned. Must be able to type and file as required. Must have excellent attendance. Credit/no credit only. **PREREQUISITE: Pick up application from Sarah and return by February 8. Interviews will be completed by February 15.**

## 9807/9808 Principals' Office

**(11-12) 1.0 credit**

Duties will be answering telephone, working counter, writing receipts, taking messages, using office machines, and other work as assigned by the principal, assistant principal and office secretaries. Principal's approval needed. Credit/no credit only. **PREREQUISITE: Pick up application from Karla and return by February 8. Interviews will be completed by February 15.**

## 2998/2999 Math Aide

**(11-12) 1.0 credit**

The math aide will assist the teacher in helping students within the classroom. Math Aides will be enrolled during Algebra Readiness, Algebra I and/or Geometry classes. The math aide will demonstrate an excellent understanding of math concepts and will have the ability to explain these concepts. Credit/no credit only. **PREREQUISITE: Math aides must have a minimum 3.5 math GPA and math teacher recommendation.**

# Off-Campus Opportunities

## College Release (12)

This is a program that allows seniors to attend a post-secondary educational institution (2-, 4-year college/university) during the second semester. Seniors wishing to attend a post-secondary institution full-time during the second semester must be enrolled as a full-time student (12 credit hours) at that institution; a senior wishing to go part-time must enroll in 2 credit hours for each 1 hour released from Goddard High School. Parents are required to attend an information session in January. Students must sign and abide by the rules of the contract that is necessary to enroll in this program. Students may enroll in both COLLEGE release and INTERNSHIP or WORK program second semester. Credits awarded dependent upon program seat time.

**PREREQUISITE: Admittance to college by October, good credit standing, good attendance & GHS/COLLEGE RELEASE FORM must be turned into the COUNSELORS' office by the end of 1st semester. See page 37.**

Hour	COLLEGE RELEASE 2 <sup>nd</sup> Semester
1st	9201
2nd	9203
3rd	9205
4th	9207
5th	9209
6th	9211
7th	9213

Block	Hour	WSU TECH 1 <sup>st</sup> Semester	WSU TECH 2 <sup>nd</sup> Semester
AM Block	1st	9050	9051
	2nd	9052	9053
	3rd	9054	9055
BOTH	4th	9056	9057
PM Block	5th	9058	9059
	6th	9060	9061
	7th	9062	9063

## WSU Tech (11-12)

WSU TECH offers certificate programs in SEVERAL AREAS and the tuition is FREE! The programs open to high school juniors and seniors are: listed on pages 55-56. Use AM or PM course #s according to your program.

**Submit the WSU TECH application Kim Hoetmer and enroll in the AM or PM #s in Career Cruising. Please make sure you write the BLOCK PROGRAM you want on the application. JumpStart Form is due by March 6. See pages 38-39.**

## CTE Application-Level Internship or Employment Release (12)

If you'd like to explore a career that is not part of a CTE pathway (internship – usually unpaid) OR you'd like to add flexibility to your 2nd semester and work at your job – this is for you. Students must be on the "work site" for 5 hours per hour of release each week for a maximum of 3 hours of release = 15 hours on the work site. Students are responsible for finding a placement but are encouraged to work with their CTE instructor and/or counselor. Students will keep a journal of work experience and will be placed with a GHS placement coordinator. Students will be expected to demonstrate dependability, proper work behavior, proper attitudes on the job, and to maintain a proper work image while they are employed. Students not complying will be dropped from the program and will be required to enroll in a regular seven-credit schedule. Students in a release program may not aide in the same semester. Seniors may only release 2nd semester.

**PREREQUISITE: Position secured by 1<sup>st</sup> day of 2<sup>nd</sup> semester, good credit standing, and good attendance.**

**CTE/INTERNSHIP/WORKSTUDY RELEASE FORM must be turned in by the 1<sup>st</sup> Monday in December to the counselors' office. See pages 40-41.**

# Goddard High School College Release (2<sup>nd</sup> semester only)

The opportunity to begin taking on-campus college courses is a great way to take a “test drive” of college life, however, communication with parents and the high school counselor is key to success. Below are the steps to follow to comply with graduating under the College Release Program.

- Seniors must fulfill all graduation requirements to receive a diploma and participate in graduation.
  - Check graduation requirements. Seniors MUST PASS (D- or higher) any “in progress” or blank requirements.
  - Currently, I MUST PASS \_\_\_\_\_ (initial) \_\_\_\_\_
- Seniors must be enrolled in 2-credit hours for each class period of College Release. For example, if a senior is released for 3 class periods, he or she would need to be enrolled in 6-credit hours (2 x 3 = 6). For senior who are released for the full day, they would need to be enrolled in 12-credit hours as this is considered full-time in college.
  - Check your schedule.
  - I am released from GHS for \_\_\_\_\_ hours. Multiple by 2. \_\_\_\_\_
  - I am enrolled in \_\_\_\_\_ credit hours at \_\_\_\_\_.
- Seniors MUST continue to be enrolled in the correct number of hours. If a class is dropped, he or she will need to enroll in another college course this semester or come back to the high school for the correct number of hours. (initial) \_\_\_\_\_
- As a HIGH SCHOOL STUDENT, you do not qualify for financial aid (need or merit). **You are responsible for all costs associated with enrollment at the college level.** (initial) \_\_\_\_\_/\_\_\_\_\_
- To participate in the graduation ceremony, you must provide a copy of your course **schedule** by the first Friday in **May**. This can be emailed to [khoetmer@goddardusd.com](mailto:khoetmer@goddardusd.com) or you can stop by to drop it off. (initial) \_\_\_\_\_/\_\_\_\_\_
- To receive your diploma and/or final transcript, you must supply documentation of your **semester grades**. You must either stop by the counselors’ office and log in to your college account and print a copy or have the college mail an official transcript to Goddard High School, 2500 S. 199<sup>th</sup> W. Goddard, KS 67052 Attention: Registrar. Take care of this ASAP as our office will be closed by June 1 and you will want your final high school transcript sent out so you can enroll for the fall semester. (initial) \_\_\_\_\_/\_\_\_\_\_
- You will need to check the announcements and GHS website for dates and important senior information. Information regarding **prom, graduation practice, cap and gown pick up, senior check out form** and other information can be found there. Keep in touch with a friend at the high school who can keep you up to date. (initial) \_\_\_\_\_/\_\_\_\_\_
- Hours taken as part of College Release may not count for Qualified Admissions curriculum or NCAA eligibility or transfer to the next institution. If you have any concerns about this, please make sure you research transferability. Also, the grades that you earn can affect next semester’s enrollment and scholarship eligibility. This is the real deal so please make sure you continue to keep yourself in a position to be as successful as you can. Know that there are resources available to you on campus if you begin to struggle and GHS teachers are still available if you need assistance. (initial) \_\_\_\_\_/\_\_\_\_\_

I AGREE TO FULFILL REQUIREMENTS OF THE COLLEGE RELEASE PROGRAM.

\_\_\_\_\_  
( )  
Student Signature Print Name Cell Phone Number

I/WE AGREE TO THE REQUIREMENTS OF THE COLLEGE RELEASE PROGRAM.

\_\_\_\_\_  
Parent Signature Date

**This application must be completed by the end of 1<sup>st</sup> semester in addition to a copy of the college schedule showing the course names, course dates, and credits earned.**

**Students who do not complete the application or do not have an approved college schedule by the first week of January will be enrolled in regular schedule at GHS.**

# WSU Tech 2019-20

GHS took all 10<sup>th</sup> graders to WSU TECH on October 24, but we strongly recommend an individual visit with your parents. You can also learn more about each of these programs and view the courses required to complete each program by going to [www.wsutech.edu](http://www.wsutech.edu) and click on PROGRAMS OF STUDY or click on the links if you are accessing this electronically. **AAS** = Associates of Applied Science. **TC** = Technical Certificate. **COC** = Certificate of Completion.

**Each semester (unless noted) will take FOUR HOURS each semester of enrollment either in the morning or afternoon.**

# FREE TUITION

HIGH SCHOOL JUNIORS & SENIORS RECEIVE FREE TUITION FOR ELIGIBLE COURSES

### High school students and parents contact:

Ashtyn Waltrip | 316.677.1853 | awaltrip@wsutech.edu

### USD 259 & Maize High school students and parents contact:

Breahna Crawford | 316.677.9524 | bcrawford3@wsutech.edu

### CAMPUSES:

NCAT | 4004 N Webb Road  
City Center | 301 S Grove  
WSU Old Town | 213 N Mead  
WSU South | 3821 E Harry

FALL 2018 PROGRAM BLOCKS HAVE BEEN ARRANGED FOR STUDENTS WITH FLEXIBLE SCHOOL DAYS

### AUTO SERVICE

Campus: City Center  
Time: 8:00 am - 11:00 am  
OR 12:00 pm - 3:00 pm

← At Goddard Campus.  
AM is hours 1-3  
PM is hours 5-7.

### COMPOSITES/SHEETMETAL

Campus: City Center  
Time: 8:00 am - 11:00 am  
OR 12:00 pm - 3:00 pm

### MACHINING

Campus: NCAT  
Time: 8:00 am - 11:00 am  
OR 12:00 pm - 3:00 pm

### AVIATION MAINTENANCE

Campus: NCAT  
Time: 8:00 am - 11:00 am  
OR 12:00 pm - 3:00 pm

### ELECTRONICS

Campus: NCAT & City Center  
Time: 8:00 am - 11:00 am  
OR ON-LINE

### MAINTENANCE & RELIABILITY

Campus: NCAT  
Time: 8:00 am - 11:00 am  
OR 12:00 pm - 3:00 pm

### CATIA

Campus: NCAT  
Time: 8:00 am - 11:00 am

### INTERIOR DESIGN

Campus: WSU South  
Time: 8:00 am - 11:00 am  
OR 12:00 pm - 3:00 pm

### ROBOTICS

Campus: NCAT  
Time: 8:00 am - 11:00 am

### CLIMATE & ENERGY CONTROL TECHNOLOGIES (HVAC)

Campus: City Center  
Time: 8:00 am - 11:00 am  
OR 12:00 pm - 3:00 pm

### IT SYSTEMS

Campus: City Center  
Time: 8:00 am - 11:00 am  
OR 12:00 pm - 3:00 pm

### WELDING

Campus: City Center  
Time: 8:00 am - 11:00 am  
OR 12:00 pm - 3:00 pm

### CONSTRUCTION SCIENCE

Campus: City Center  
Time: 8:00 am - 11:00 am  
OR 12:00 pm - 3:00 pm

### CLASSES OFFERED AT DIFFERENT TIMES & LOCATIONS:

ACCOUNTING	CNA/CMA/HHA	NURSING
MASSAGE THERAPY	DENTAL ASSISTANT	ARCH. DESIGN
AERO. COATINGS & PAINT		
PLUS MANY MORE!		



WSU TECH  
4004 N. WEBB ROAD | WICHITA, KS 67226  
WWW.WSUTECH.EDU | 316.677.9400



# JumpStart

BLOCK ENROLLMENT FORM

Student Name \_\_\_\_\_ High School \_\_\_\_\_

Date of Birth \_\_\_\_\_ Phone Number \_\_\_\_\_ E-mail \_\_\_\_\_

Gender: Male\_\_\_ Female\_\_\_ Anticipated Graduation MM/YYYY \_\_\_\_\_ Overall HS GPA \_\_\_\_\_

Ethnicity(Circle): Asian| African Amer.| Hispanic Amer.| Amer. Indian| White| Unknown| Native Hawaiian/Pacific Island

Home Address \_\_\_\_\_

Street

City

Zip

Block Program: \_\_\_\_\_ AM or PM (circle)

This JumpStart Enrollment Form must be completed and certified by the School Counselor at the high school where the student is enrolled. The purpose is to recommend a student for enrollment to the JumpStart program at WSU Tech in accordance with the admission requirements outlines in the JumpStart eligibility requirements.

Please acknowledge that you have read the below statements by making a mark on the line provided.

\_\_\_\_ I acknowledge that I am taking the selected courses for college credit through WSU Tech. A course syllabus will be provided for each college course by the instructor.

\_\_\_\_ I acknowledge that coursework will be at a college level and that I must complete all coursework.

### Attendance Requirements:

It is the student's responsibility to attend all classes in which he/she is enrolled. High school students are responsible for completing the proper college process and notifying their high school counselor if they choose to withdraw from a course. Students are responsible for following WSU Tech Student Code of Conduct found on the WSU Tech website.

Student Signature \_\_\_\_\_ Date \_\_\_\_\_

Parent/Guardian Signature \_\_\_\_\_ Date \_\_\_\_\_

FOR USE BY SCHOOL COUNSELOR

Registration for term:  FALL (Aug - Dec)  Spring (Jan - May)

For questions or concerns please contact Jena Roth, Associate Dean of High School Partnerships at WSU Tech. Contact information for e-mail and phone number are jroth2@watc.edu and (316)677-1069.

Student is approved to take credit hours during the term selected above.

School Counselor Signature \_\_\_\_\_ Date \_\_\_\_\_

# CTE/Internship/Employment Release Guide

## Follow these directions in order:

1. Check to make sure you have taken the technical levels required for release.
2. Choose the CTE PATHWAY you are requesting.
3. Choose the SEMESTER you would like to release. **Most programs are 2<sup>nd</sup> semester only unless 1<sup>st</sup> semester numbers are listed.**
4. Choose the NUMBER of HOURS you would like to release (5 contact hours per week for each 1 hour of release).
5. Choose the hours for your release if you are in a program that allows for more than 1 hour of release.
6. Find these courses/course #s in the SENIOR OFF-CAMPUS OPPORTUNITIES section of Career Cruising.
7. Select the appropriate #s for the hours (if applicable) to when you would like to be off-campus. See your counselor if you need help. This is a new process for you!
8. You will complete the CTE/Internship/Employment Release Application **in December** to verify eligibility. See page 41 for the application.

CTE Pathway	Course Title in Career Cruising	Fall Semester Course #s	Spring Semester Course #s	Return Application to:
<i>Early Childhood Development</i>	Early Childhood Applications	7208	7209	Mrs. Dimick
<i>Early Childhood Development</i>	Career Connections	<i>Not eligible for release</i>	1 <sup>st</sup> hour = 9965 2 <sup>nd</sup> hour = 9967 3 <sup>rd</sup> hour = 9969 5 <sup>th</sup> hour = 9971 6 <sup>th</sup> hour = 9973 7 <sup>th</sup> hour = 9975	Mrs. Dimick
<i>Family &amp; Consumer Services</i>	Career Connections	<i>Not eligible for release</i>		Mrs. Dimick
<i>Restaurant &amp; Event Management</i>	Career Connections	<i>Not eligible for release</i>		Mrs. Dimick
<i>Visual Arts (FAID)</i>	Career Connections	<i>Not eligible for release</i>		Mrs. Huffman
<i>Visual Arts (Graphic Design)</i>	Media Technology – Workplace Exp.	6702	6703	Mr. Zimmer
<i>Information Technology</i>	Applied Concepts of Networking	6690	6691	Mr. Weber
<i>Education &amp; Training</i>	Teaching Observation (fall)	9801	1 <sup>st</sup> hour = 9951 2 <sup>nd</sup> hour = 9953 3 <sup>rd</sup> hour = 9955 4 <sup>th</sup> hour = 9957 5 <sup>th</sup> hour = 9959 6 <sup>th</sup> hour = 9961 7 <sup>th</sup> hour = 9963	Mrs. Dimick
	Teaching Internship (spring)			
<i>Not part of a CTE Pathway</i>	Employment/ Internship Release	<i>Not eligible for release</i>	1 <sup>st</sup> hour = 9913 2 <sup>nd</sup> hour = 9915 3 <sup>rd</sup> hour = 9917 5 <sup>th</sup> hour = 9921 6 <sup>th</sup> hour = 9923 7 <sup>th</sup> hour = 9925	Mr. Zimmer

# Goddard High School

## CTE/Internship/Employment Release Application

Choose the program you are applying for:

- Employment
- Internship/Volunteer Experience
- \*Early Childhood Applications (1 hour only 2 semesters)
- \*Early Childhood Career Connections
- \*Human Services Career Connections
- \*Restaurant & Event Management Career Connections
- \*Teaching Observation (1 hour 1<sup>st</sup> semester only)
- \*Teaching Internship
- \*Interior or Fashion Design Career Connections
- \*Networking Internship (USD 265) (1 hour only)
- \*Media Technology Internship (USD 265) (1 hour only)

First Name: \_\_\_\_\_ Last Name: \_\_\_\_\_

**Complete what you know currently:**

Business, Organization, or School Placement: \_\_\_\_\_

Direct Supervisor: \_\_\_\_\_ Direct Supervisor number: ( ) \_\_\_\_\_

Email: \_\_\_\_\_ Days Open: M T W TH F Sa Su Hours Open: \_\_\_\_\_

Your job title/duties: \_\_\_\_\_  Paid or  Unpaid

Please describe the career experiences/skills you expect to gain from this placement.

**This application must be completed by the first Monday in December.**

**Students who do not complete the application or are without a placement by the first week of January will be enrolled in a regular schedule at GHS.**

Click the boxes to the left each statement to indicate you understand the grading and release policies:

- Grade is determined first by meeting the release time requirement.
- Placement cannot be lost for more than 10 business days. Credit may be lost or course may be failed.
- Be on-site for 5-hours per week for each hour of release with the maximum of 15 hours/3 hours of release (travel time to and from placement does not count toward the total)
- Time cards or other agreed upon method of recording time and brief journal summaries of experiences due each week/pay period. CTE pathways require that you demonstrate competencies related to your area.
- Periodic on-site CTE instructor and cooperating internship supervisor evaluations.
- Reflection paper – 1-2 pages in length – details to follow.

**Student Signature** \_\_\_\_\_ **Date** \_\_\_\_\_

By signing, you agree to the statements on the application, grading and evaluation process.

**Parent Signature** \_\_\_\_\_ **Date** \_\_\_\_\_

By signing, you agree to statements on the application and give your permission for your student to drive to and from internship/work study placement.