

**2018-2019 Groom ISD  
Utility Usage and Cost for Fiscal Year Ending 8/31/2019**

2018-2019 School Fiscal Year														
	September	October	November	December	January	February	March	April	May	June	July	August	Totals	
<b>Electricity:</b>														
<b>Kilo Hours</b>	48,924	32,994	30,800	44,186	39,242	43,016	42,568	33,854	30,228	32,509	33,901	42,426	454,648	<b>Electricity:</b>
<b>Cost \$</b>	\$4,055	\$3,444	\$2,711	\$2,860	\$2,701	\$2,574	\$3,096	\$2,744	\$2,534	\$2,904	\$3,393	\$3,929	\$36,945	<b>Kilo Hours</b>
<b>Unit cost \$</b>	0.082887	0.104373	0.088016	0.064716	0.068828	0.059849	0.072724	0.081045	0.083832	0.089322	0.100091	0.092619	0.081260	<b>Unit cost</b>
<b>Natural Gas:</b>														
<b>MCF</b>	1.8	2.3	67.6	314.6	521.5	580.1	821.5	0.0	147.5	29.2	18.0	35.4	2,540	<b>Natural Gas:</b>
<b>Cost \$</b>	\$59	\$3	\$380	\$1,698	\$3,462	\$3,102	\$3,708	\$0	\$769	\$229	\$174	\$244	\$13,829	<b>MCF</b>
<b>Unit cost \$</b>	32.500000	1.365217	5.627663	5.398315	6.637967	5.346595	4.514267		5.215797	7.857877	9.683889	6.880226	5.445466	<b>Unit cost</b>
<b>Water:</b>														
<b>Gallons</b>	99	48	35	30	32	27	47	32	812	209	351	688	2,410	<b>Water ONLY:</b>
<b>Cost \$</b>	\$314	\$188	\$150	\$137	\$135	\$133	\$212	\$405	\$2,113	\$603	\$958	\$1,803	\$7,146	<b>Gallons</b>
<b>Unit cost \$</b>	3.166667	3.906250	4.271429	4.566667	4.203125	4.907407	4.500000	12.656250	2.601601	2.882775	2.727920	2.619913	2.965145	<b>Unit cost</b>
<b>Sanation \$</b>	\$253.59	\$261.20	\$261.20	\$261.20	\$261.20	\$261.20	\$282.84	\$343.20	\$343.20	\$343.20	\$343.20	\$343.20	\$3,558	<b>Total Other :</b>
<b>Sewer \$</b>	\$53.75	\$54.25	\$54.25	\$54.25	\$54.25	\$54.25	\$68.25	\$68.25	\$68.25	\$68.25	\$68.25	\$68.25	\$735	<b>\$4,784</b>
<b>Other \$</b>	\$40.00	\$40.00	\$40.00	\$40.00	\$40.00	\$40.00	\$41.79	\$41.79	\$41.79	\$41.79	\$41.79	\$41.79	\$491	
<b>Aggregate Cost: \$</b>	\$4,427	\$3,634	\$3,241	\$4,695	\$6,297	\$5,809	\$7,016	\$3,149	\$5,416	\$3,736	\$4,525	\$5,976	\$57,919	<b>Aggregate Cost:</b>

**Average**

	2010-11 Fiscal Year	2011-12 Fiscal Year	2012 - 13 Fiscal Year	2013-14 Fiscal Year	2014-15 Fiscal Year	2015-2016 Fiscal Year	2016-2017 Fiscal Year	2017-2018 Fiscal Year	2018-2019 Fiscal Year	Average
<b>Electricity:</b>										
<b>Kilo Hours</b>	Total Usage for Year	Total Usage for Year	Total Usage for Year	Total Usage for Year	Total Usage for Year	Total Usage for Year	Total Usage for Year	Total Usage for Year	Total Usage for Year	Average Usage
<b>Cost \$</b>	\$27,462	\$28,320	\$25,866	\$30,247	\$28,076	\$25,833	\$29,765	\$31,756	\$36,945	\$29,363.34
<b>Unit cost \$</b>	0.0713	0.0774	0.0755	0.0841	0.0865	0.0798	0.0913	0.0916	0.0813	0.0821
<b>Natural Gas:</b>										
<b>MCF</b>	2,340	2,293	2,251	2,750	2,749	2,441	1,978	1,805	2,540	2,350
<b>Cost \$</b>	\$15,288	\$12,311	\$12,565	\$19,765	\$17,582	\$12,293	\$11,586	\$10,459	\$13,829	\$13,964.19
<b>Unit cost \$</b>	6.5333	5.3689	5.5820	7.1873	6.3958	5.0361	5.8573	5.7945	5.4445	5.9111
<b>City Bill:</b>										
<b>Gallons</b>	3,696	3,058	2,909	1,551	1,062	1,412	926	1,630	2,410	2073
<b>Cost \$</b>	\$13,236	\$11,831	\$12,033	\$8,281	\$7,051	\$7,743	\$7,075	\$8,898	\$11,930	\$9,786.44
<b>Unit cost \$</b>	3.5812	3.8689	4.1365	5.3391	6.6394	5.4837	7.6403	5.4589	4.9502	5.2331
<b>Aggregate Cost: \$</b>	\$55,986	\$52,462	\$50,464	\$58,293	\$52,709	\$45,869	\$48,426	\$51,113	\$62,704	\$53,113.97
<b>Rank</b>	3	5	7	2	4	9	8	6	1	

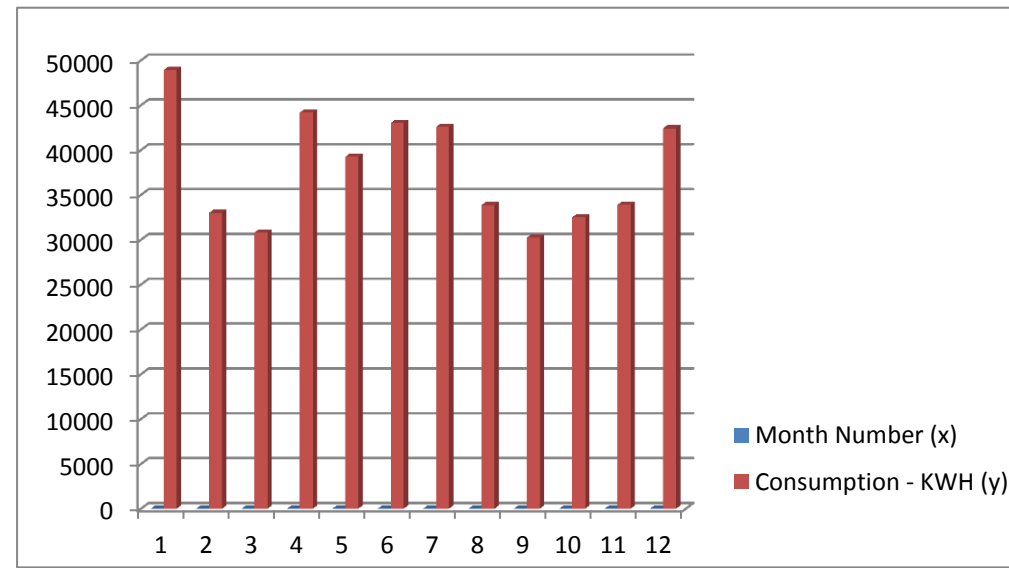
Sewer, Water, Sanation

Monthly Electrical Consumption in 2018-2019

Month (x)	Month Number (x)	Consumption KWH (y)
Sep-18	1	48,924
Oct-18	2	32,994
Nov-18	3	30,800
Dec-18	4	44,186
Jan-19	5	39,242
Feb-19	6	43,016
Mar-19	7	42,568
Apr-19	8	33,854
May-19	9	30,228
Jun-19	10	32,509
Jul-19	11	33,901
Aug-19	12	42,426

**Average 37,887**

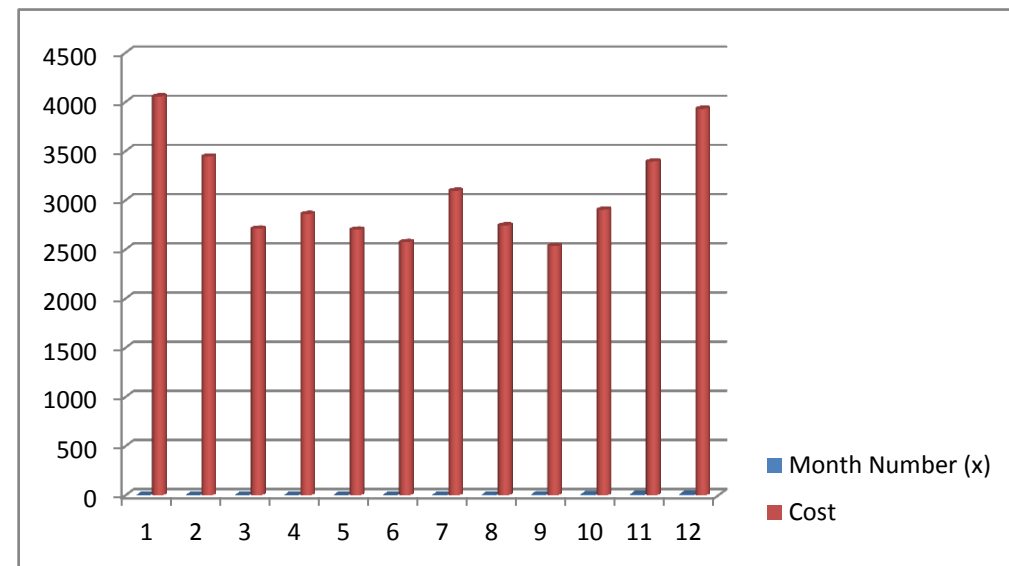
Consumption in KWH



Cost per Month

Month (x)	Month Number (x)	Cost
Sep-18	1	4,055
Oct-18	2	3,444
Nov-18	3	2,711
Dec-18	4	2,860
Jan-19	5	2,701
Feb-19	6	2,574
Mar-19	7	3,096
Apr-19	8	2,744
May-19	9	2,534
Jun-19	10	2,904
Jul-19	11	3,393
Aug-19	12	3,929

**Average 3,079**

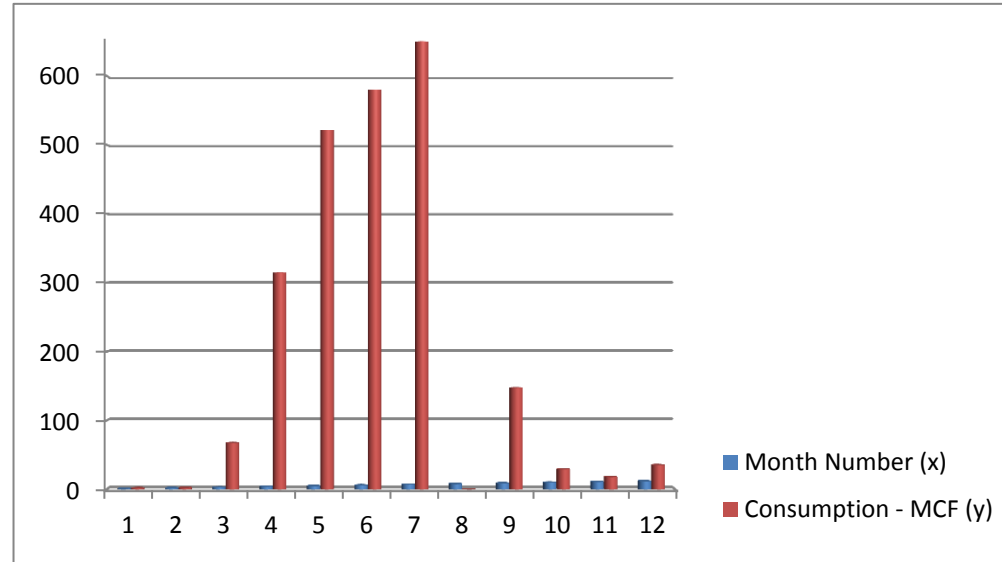


Monthly Natural Gas Usage 2018-2019

Month (x)	Month Number (x)	Consumption - MCF (y)
Sep-18	1	1.8
Oct-18	2	2.3
Nov-18	3	67.6
Dec-18	4	314.6
Jan-19	5	521.5
Feb-19	6	580.1
Mar-19	7	821.5
Apr-19	8	0
May-19	9	147.5
Jun-19	10	29.2
Jul-19	11	18
Aug-19	12	35.4

**Average 230.9**

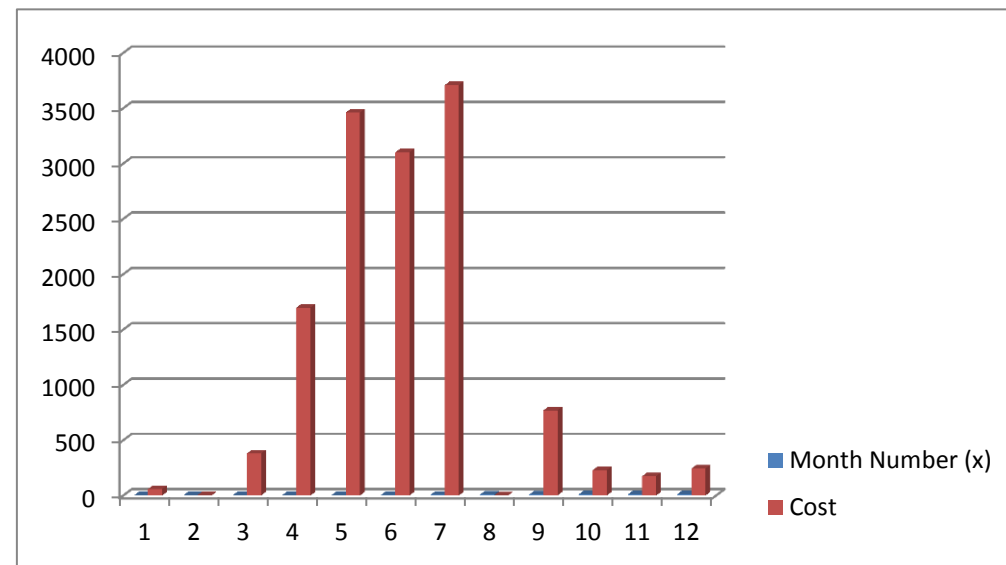
Monthly Consumption - Natural Gas



Monthly Cost - Natural Gas

Month (x)	Month Number (x)	Cost
Sep-18	1	59
Oct-18	2	3
Nov-18	3	380
Dec-18	4	1698
Jan-19	5	3462
Feb-19	6	3102
Mar-19	7	3708
Apr-19	8	0
May-19	9	769
Jun-19	10	229
Jul-19	11	174
Aug-19	12	244

**Average \$1,257**



Monthly Cost & Water Usage 2018-2019

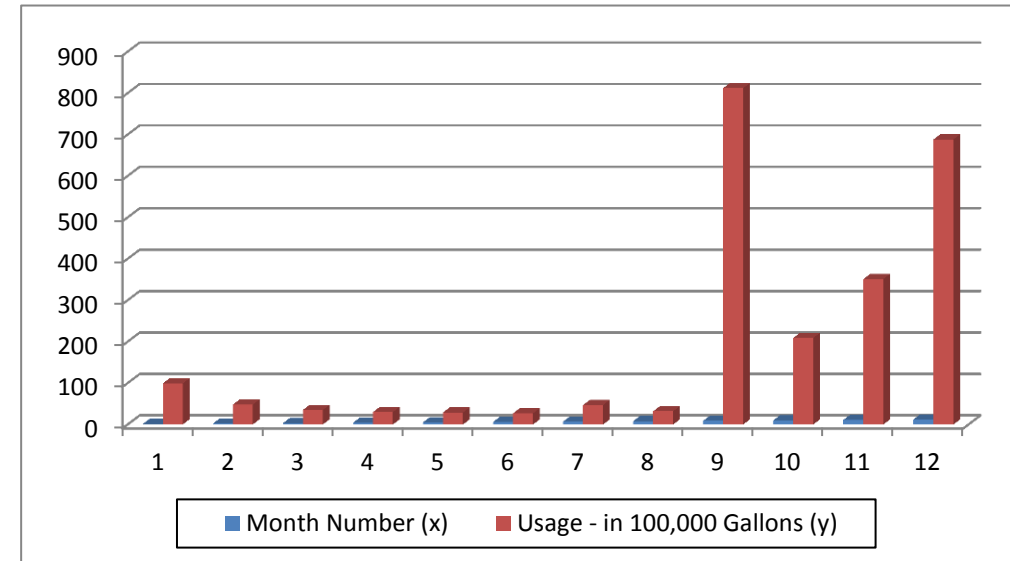
Month (x)	Month Number (x)	Usage - in 100,000 Gallons (y)
Sep-18	1	99
Oct-18	2	48
Nov-18	3	35
Dec-18	4	30
Jan-19	5	29
Feb-19	6	27
Mar-19	7	47
Apr-19	8	32
May-19	9	812
Jun-19	10	209
Jul-19	11	351
Aug-19	12	688

**Average 201**

Month (x)	Month Number (x)	Cost
Sep-18	1	\$314
Oct-18	2	\$188
Nov-18	3	\$150
Dec-18	4	\$137
Jan-19	5	\$135
Feb-19	6	\$133
Mar-19	7	\$212
Apr-19	8	\$405
May-19	9	\$2,113
Jun-19	10	\$603
Jul-19	11	\$958
Aug-19	12	\$1,803

**Average \$595**

Monthly Water Consumption



Monthly Water Cost

