

Lesson 12: Homophones in Analogies

Analogies can be used to compare pairs of homophones.



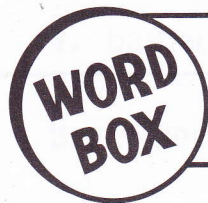
Key to Solving

How do you read the symbols used in analogies?

brakes : breaks :: peaks : peeks

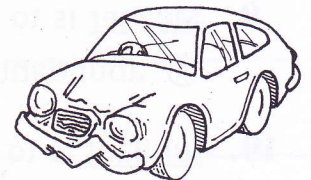
The single colon (:) compares two items in a word pair. The double colon (::) compares the first word pair to the second. Brakes is to breaks as peaks is to peeks.

Directions: Write a word from the box to complete each analogy.



patience dye belle lye through
 sealing fryer due corps eye

1. need : knead :: die : _____
2. altar : alter :: aye : _____
3. vice : vise :: threw : _____
4. pain : pane :: bell : _____
5. symbols : cymbals :: ceiling : _____
6. cite : sight :: lie : _____
7. cache : cash :: dew : _____
8. fair : fare :: friar : _____
9. kernel : colonel :: core : _____
10. per : purr :: patients : _____



Think of another analogy using homophones. Trade with a partner and make sure you can both spell all the words correctly.