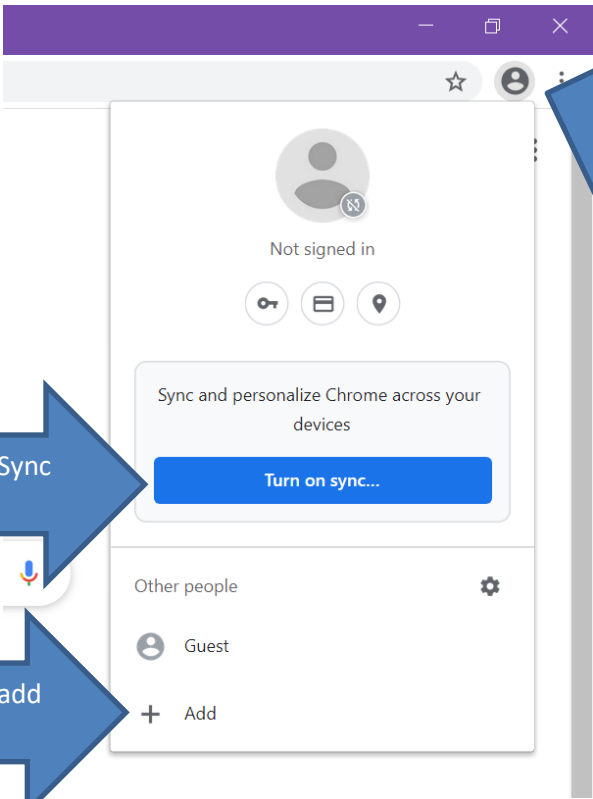


# Signing into the Chrome Browser

(Access Read & Write for Google Chrome on a home computer)

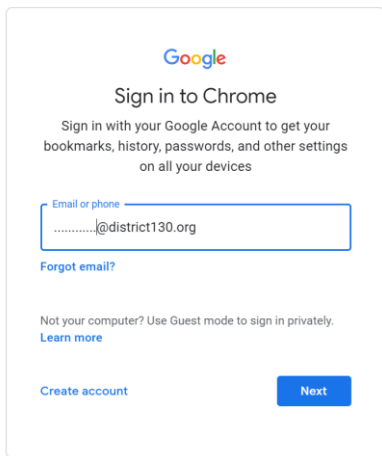


This screenshot shows the Chrome browser's user profile menu. At the top, it says "Not signed in" with a person icon. Below this are icons for keys, a wallet, and a location pin. A section titled "Sync and personalize Chrome across your devices" contains a blue button labeled "Turn on sync...". Below that is a section titled "Other people" with a gear icon, listing "Guest" and "Add" with a plus sign.

**In Chrome browser, click on person icon in top right hand corner**

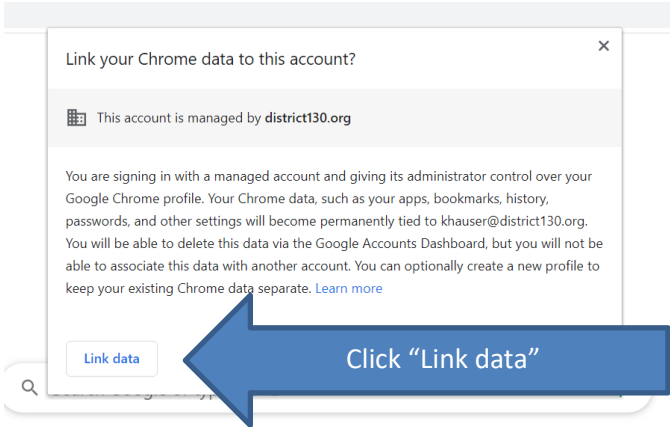
**You can select Turn on Sync or... + add**

**If others are signed in, you may add your school account**



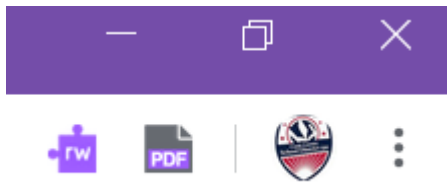
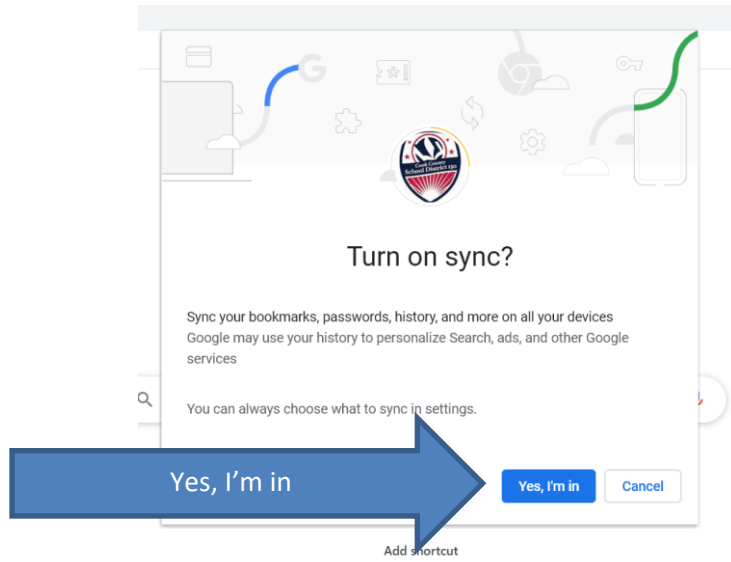
The "Sign in to Chrome" form features the Google logo at the top. Below it, the text reads "Sign in with your Google Account to get your bookmarks, history, passwords, and other settings on all your devices". There is an input field for "Email or phone" containing ".....@district130.org". Below the input field is a "Forgot email?" link. Further down, it says "Not your computer? Use Guest mode to sign in privately." with a "Learn more" link. At the bottom, there are two buttons: "Create account" and "Next".

**Sign in using your district Google email and password**



This dialog box is titled "Link your Chrome data to this account?". It shows a header with a grid icon and the text "This account is managed by district130.org". The main body contains a warning: "You are signing in with a managed account and giving its administrator control over your Google Chrome profile. Your Chrome data, such as your apps, bookmarks, history, passwords, and other settings will become permanently tied to khauser@district130.org. You will be able to delete this data via the Google Accounts Dashboard, but you will not be able to associate this data with another account. You can optionally create a new profile to keep your existing Chrome data separate. Learn more". At the bottom left is a "Link data" button.

**Click "Link data"**



Read & Write and all District apps will be available.