

Vermilion Parish School Board Plan 1 revised District A

Legend

- Water Areas
- Railroads
- Rivers

Streets

- Streets
- State Hwys
- Federal Hwys
- 2011 Precincts

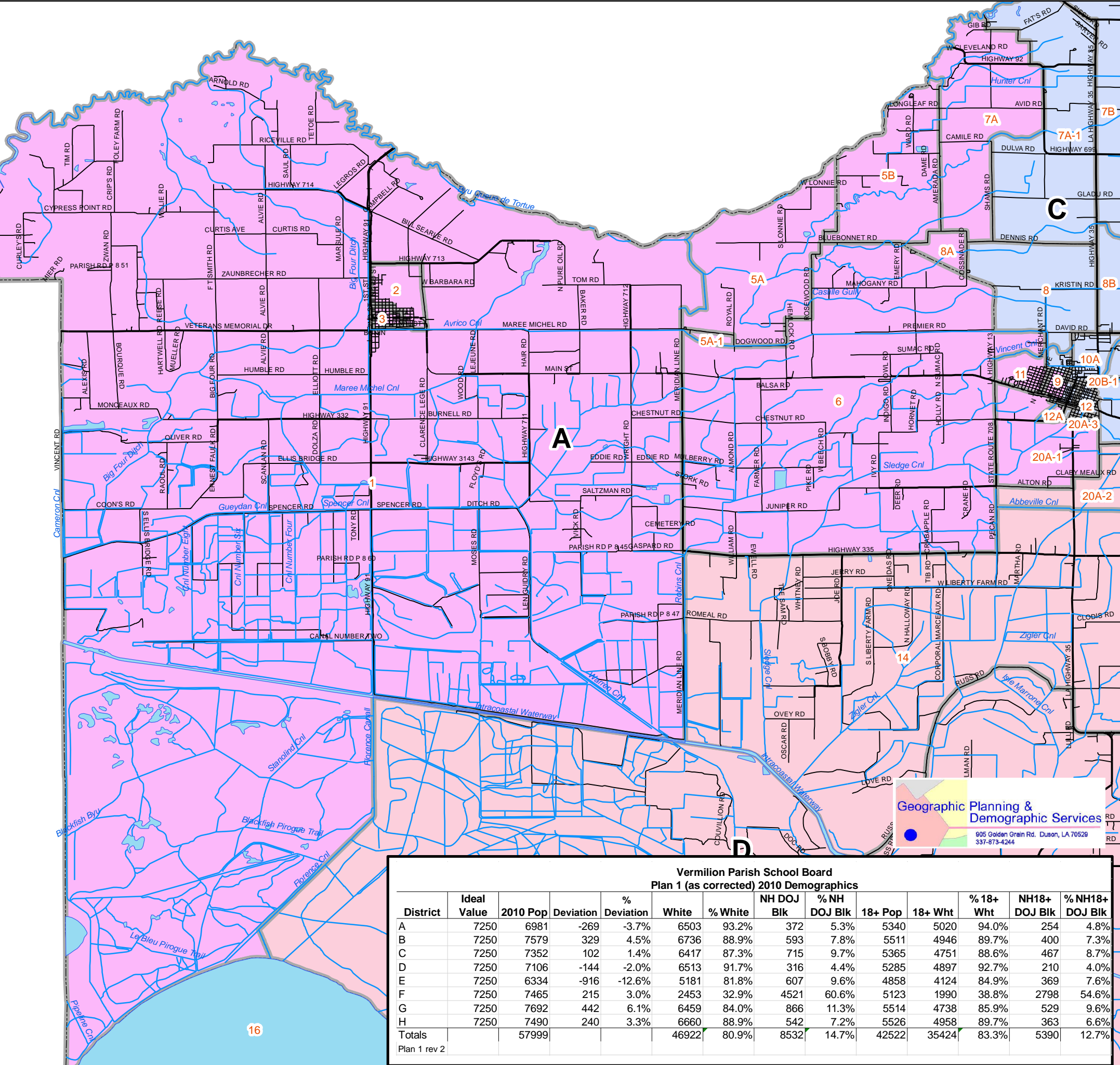
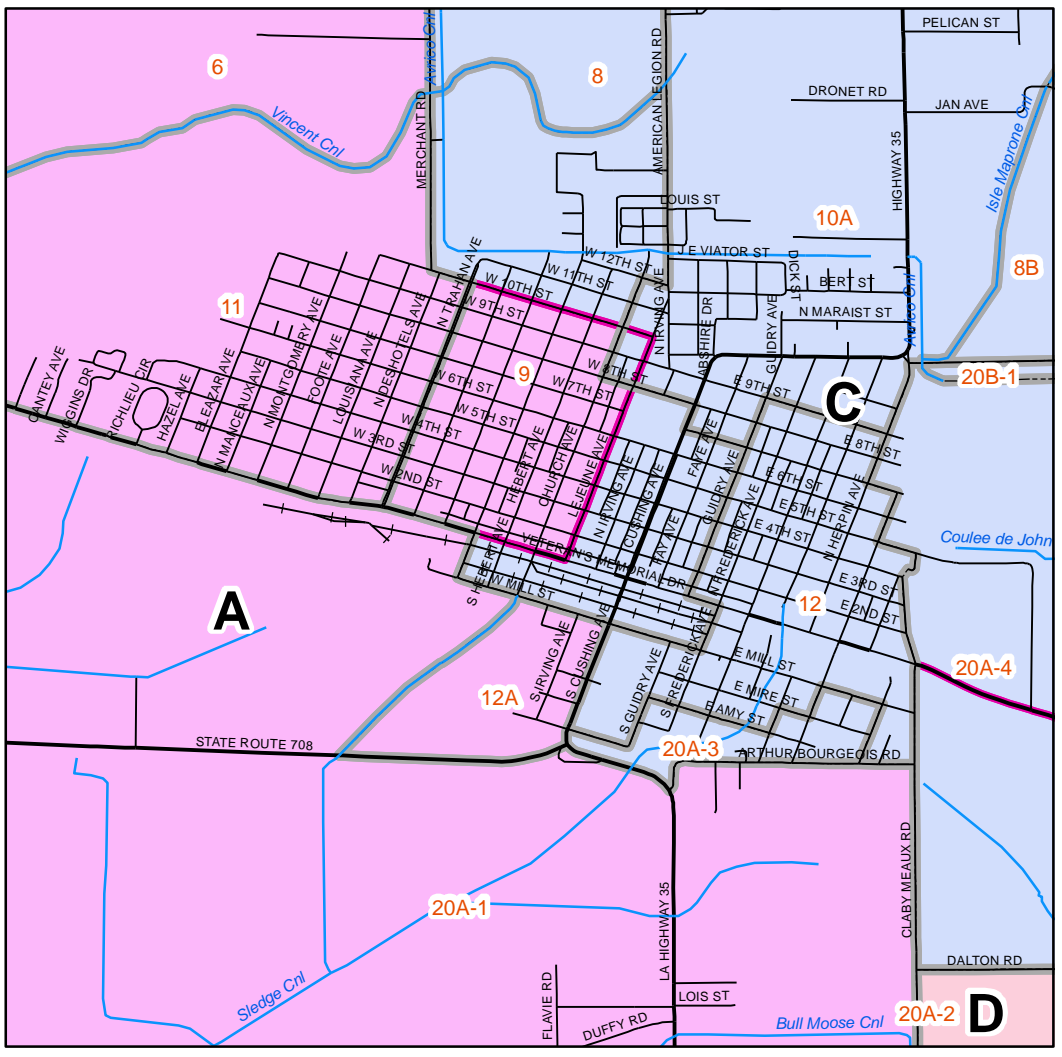
VPSB Plan 1 rev 2 Corrections

NAME

- A
- B
- C
- D
- E
- F
- G
- H

(R)

Kaplan Area



Geographic Planning & Demographic Services
905 Golden Grain Rd. Duson, LA 70529
337-873-4244

**Vermilion Parish School Board
Plan 1 (as corrected) 2010 Demographics**

District	Ideal Value	2010 Pop	Deviation	% Deviation	White	% White	NH DOJ Blk	% NH DOJ Blk	18+ Pop	18+ Wht	% 18+ Wht	NH18+ DOJ Blk	% NH18+ DOJ Blk
A	7250	6981	-269	-3.7%	6503	93.2%	372	5.3%	5340	5020	94.0%	254	4.8%
B	7250	7579	329	4.5%	6736	88.9%	593	7.8%	5511	4946	89.7%	400	7.3%
C	7250	7352	102	1.4%	6417	87.3%	715	9.7%	5365	4751	88.6%	467	8.7%
D	7250	7106	-144	-2.0%	6513	91.7%	316	4.4%	5285	4897	92.7%	210	4.0%
E	7250	6334	-916	-12.6%	5181	81.8%	607	9.6%	4858	4124	84.9%	369	7.6%
F	7250	7465	215	3.0%	2453	32.9%	4521	60.6%	5123	1990	38.8%	2798	54.6%
G	7250	7692	442	6.1%	6459	84.0%	866	11.3%	5514	4738	85.9%	529	9.6%
H	7250	7490	240	3.3%	6660	88.9%	542	7.2%	5526	4958	89.7%	363	6.6%
Totals		57999			46922	80.9%	8532	14.7%	42522	35424	83.3%	5390	12.7%

Plan 1 rev 2