

STEP 1

SCHOOLS AND DISTRICTS ARE GRADED IN 3 DIFFERENT AREAS, OR DOMAINS.

We look at performance in each domain to determine an overall grade.

STUDENT ACHIEVEMENT



SCHOOL PROGRESS



CLOSING THE GAPS



Example Grades:

STEP 2

DETERMINE THE BETTER GRADE OF STUDENT ACHIEVEMENT OR SCHOOL PROGRESS.

Whichever domain score is higher of the two will count as 70% of the overall grade. The domain score that is lower will not be factored in to the overall grade.

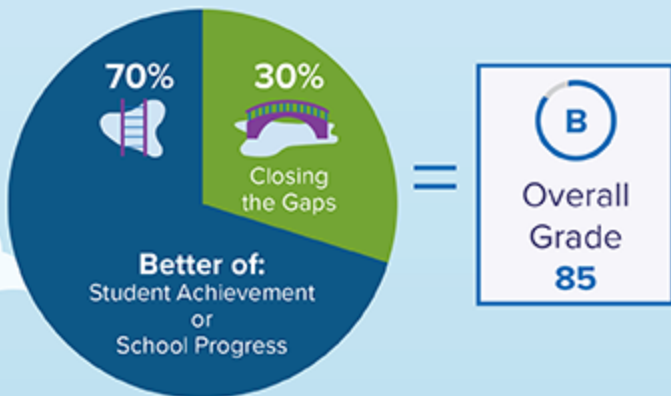


Since **83** is a higher grade than **74**, the **School Progress** grade will be used for 70% of the overall grade.

STEP 3

COMBINE SCORE FROM STEP 2 WITH THE CLOSING THE GAPS SCORE.

The better of Student Achievement or School Progress will count for 70% of the overall grade. The Closing the Gaps score will count for 30%.



* Numbers represented in this visual are for demonstration purposes only and do not reflect actual results. Certain exceptions apply.