

**HUDSON COMMUNITY SCHOOL DISTRICT
CERTIFIED ENROLLMENT FOR THE 2019-2020 SCHOOL YEAR
AND
FIVE YEAR ENROLLMENT PROJECTIONS**

Prepared by Dr. Anthony D. Voss, Superintendent



October 15, 2019

Executive Summary

Certified enrollment is up 13 students overall, with 10 of those students being resident Hudson students attending and 3 open enrolled into another Iowa Public School District. The number of students served in the district, or BEDS number has increased by 1% for a net increase of 5 students, from 745 to 751 respectively. Our other metric of comparison would be our opening day enrollment, which was 754.

As I mentioned previously, the number of resident students attending Hudson has increased by 10, from 647.3 to 657.3. At the same time, the number of students served out of the district under open enrollment has also increased by 3, from 42 to 45. At the same time, the number of students who have open enrolled into Hudson has decreased from 102 to 98. The good news is that we are net positive for open enrollment by 53.

We had 23 students who were enrolled last year, but have subsequently transferred out or moved to another school district. This compares to 31 students who moved out last year and would suggest a more transient population of learners.

Of the 45 students who are open enrolled out, 42 of them are open enrolled to Cedar Falls while 2 are open enrolled to Gladbrook-Reinbeck and one is enrolled in Waterloo. 45% of those open enrolled from Cedar Falls have an address of 700 W. Ridgeway at the time of original application. This address, while in the Hudson Community School District is on the northern border of the district and actually within the city limits of Cedar Falls.

The largest number of students open enrolling into Hudson comes from Waterloo with 50 students. This is followed by Gladbrook-Reinbeck at 23, Union at 10 and Cedar Falls at 9. The remaining students are attending from Denver, Dike-New Hartford, and North Tama.

Enrollment projections are calculated based on a cohort methodology that uses a five year rolling average to determine kindergarten size. Over the last 5 years, the kindergarten has averaged 55.6 students; while in the last 10 years it has averaged 55.1. Therefore a projection of 55 seems to be right. With this cohort methodology, estimates from prior year are left static since there is no algorithm to accurately predict transfers in or out of the district. If these projections were come to fruition, we would reach our high water mark of 759 next year before enrollment drops slightly to 744 in 2024-2025. Nonetheless, this projection should be viewed critically for multiple reason, the first of which being the original projection estimated an enrollment of 760 this year, and second these projections have not factored in the numerous residential

Hudson Enrollment

15-16 Resident	15-16 OE In	Total	16-17 Resident	16-17 OE In	Total	17-18 Resident	17-18 OE In	Total	18-19 Resident	18-19 OE In	This is not a headcount number	19-20 Resident	19-20 OE In	This is not a headcount number
45	4	49	50	6	56	48	6	54	63	5	68	44	7	51
52	4	56	41	5	46	48	8	56	46	8	54	59	3	62
54	6	60	54	5	59	43	4	47	52	9	61	50	7	57
57	8	65	54	4	58	57	8	65	39	5	44	54	8	62
58	5	63	55	5	60	50	4	54	51	12	63	39	6	45
266	27	293	254	25	279	246	30	276	251	39	290	246	31	277
39	7	46	59	4	63	59	7	66	58	5	63	51	8	59
51	8	59	40	8	48	60	3	63	61	8	69	55	6	61
57	8	65	51	7	58	43	9	52	57	4	61	64	8	72
44	7	51	57	9	66	55	7	62	40	9	49	54	6	60
191	30	221	207	28	235	217	26	243	216	26	242	224	28	252
39	5	44	39	8	47	55	11	66	51	10	61	39	9	48
40	7	47	40	8	48	39	10	49	57	11	68	48	9	57
28	8	36	43	5	48	36	7	43	39	8	47	56	12	68
50	9	59	25	8	33	35	8	43	33	6	39	38	9	47
157	29	186	147	29	176	165	36	201	180	35	215	181	39	220
614	86	700	608	82	690	628	92	720	647	100	747	651	98	749
8			5			4						3		
55			48			45			41			45		
0.22			2											
2			4			3			3					
679.22			667			680			691			699		
						28			19			33		
679.22			667			680			691			699		
86			82			92			100			98		
			1						2					
63.22			55			49			41			48		
828.44			805			821			834			845		
53.875			54.125			59.125			61.25			61.875		

**Hudson Community Schools
Headcount**

Enrollment History & Projection														
	K	1	2	3	4	5	6	7	8	9	10	11	12	TOTAL
2006-2007	43	48	42	50	58	54	57	73	69	70	82	72	70	788
2007-2008	43	42	48	42	53	59	55	56	74	67	68	81	64	752
2008-2009	63	43	45	49	39	54	60	56	55	74	64	67	80	749
2009-2010	59	58	48	45	50	40	60	60	59	54	73	66	65	737
2010-2011	51	55	57	48	47	54	34	61	60	58	55	77	64	721
2011-2012	52	46	54	61	47	47	55	38	61	59	65	55	72	712
2012-2013	59	64	52	54	63	52	50	53	39	61	58	66	56	727
2013-2014	61	61	62	48	56	66	51	46	53	40	60	60	61	725
2014-2015	50	60	63	63	47	57	65	50	44	48	38	60	60	705
2015-2016	49	56	60	65	63	46	59	65	51	44	47	36	59	700
2016-2017	56	46	59	58	60	63	48	58	66	48	48	48	34	692
2017-2018	54	56	47	65	54	66	63	52	62	66	49	43	43	720
2018-2019	68	54	61	44	63	63	68	60	49	61	67	47	40	745
2019-2020	51	62	57	62	45	59	61	72	60	48	59	68	47	751
2020-2021	55	51	62	57	62	45	59	61	72	60	48	59	68	759
2021-2022	55	55	51	62	57	62	45	59	61	72	60	48	59	746
2022-2023	55	55	55	51	62	57	62	45	59	61	72	60	48	742
2023-2024	55	55	55	55	51	62	57	62	45	59	61	72	60	749
2024-2025	55	55	55	55	55	51	62	57	62	45	59	61	72	744

Open Enroll Into Hudson								
	CF	GR	NT	Union	Waterloo	Pburg	Dike	Other
2006-2007	11	23	2	17	76	2	1	0
2007-2008	14	28	2	12	63	2	2	0
2008-2009	8	26	2	14	61	2	2	0
2009-2010	11	26	2	12	51	2	3	0
2010-2011	9	23	3	12	46	2	1	1
2011-2012	11	21	2	11	43	2	3	1
2012-2013	14	19	2	9	45	2	3	1
2013-2014	14	18	1	11	53	1	5	4
2014-2015	17	22	1	7	45	0	5	4
2015-2016	11	20	1	8	40	0	4	2
2016-2017	12	26	1	8	30	0	4	1
2017-2018	9	27	1	10	39	0	4	2
2018-2019	13	25	2	10	48	0	3	1
2019-2020	9	23	2	10	51	0	2	1

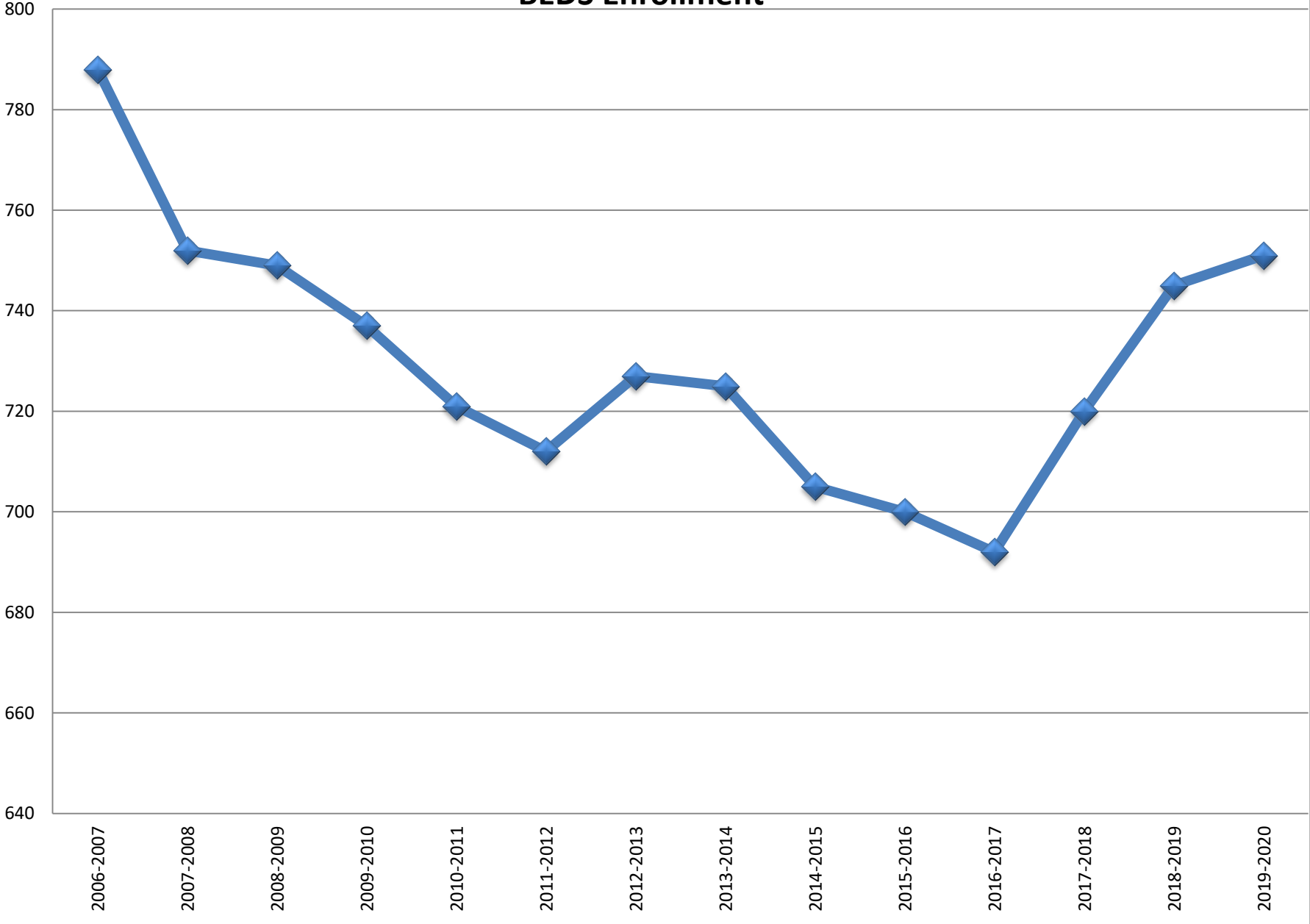
Open Enroll Out of Hudson								
	CF	GR	NT	Union	Waterloo	Pburg	Dike	Other
2006-2007	18	0	0	2	8	0	1	8
2007-2008	30	1	0	0	12	0	0	1
2008-2009	26	0	0	0	5	0	0	0
2009-2010	33	2	0	0	3	0	0	2
2010-2011	32	0	0	0	7	0	0	1
2011-2012	40	0	0	0	4	0	0	2
2012-2013	40	0	0	0	6	0	0	1
2013-2014	38	0	0	0	5	0	2	1
2014-2015	38	0	0	0	4	0	0	1
2015-2016	46	1	1	0	3	0	1	3
2016-2017	43	1	1	0	2	0	0	1
2017-2018	38	3	0	0	2	0	0	2
2018-2019	38	2			1			
2019-2020	43	2			1			

Elementary Totals	2006-2007	241
	2007-2008	228
	2008-2009	239
	2009-2010	260
	2010-2011	258
	2011-2012	260
	2012-2013	292
	2013-2014	288
	2014-2015	283
	2015-2016	293
	2016-2017	279
	2017-2018	276
	2018-2019	290
	2019-2020	277

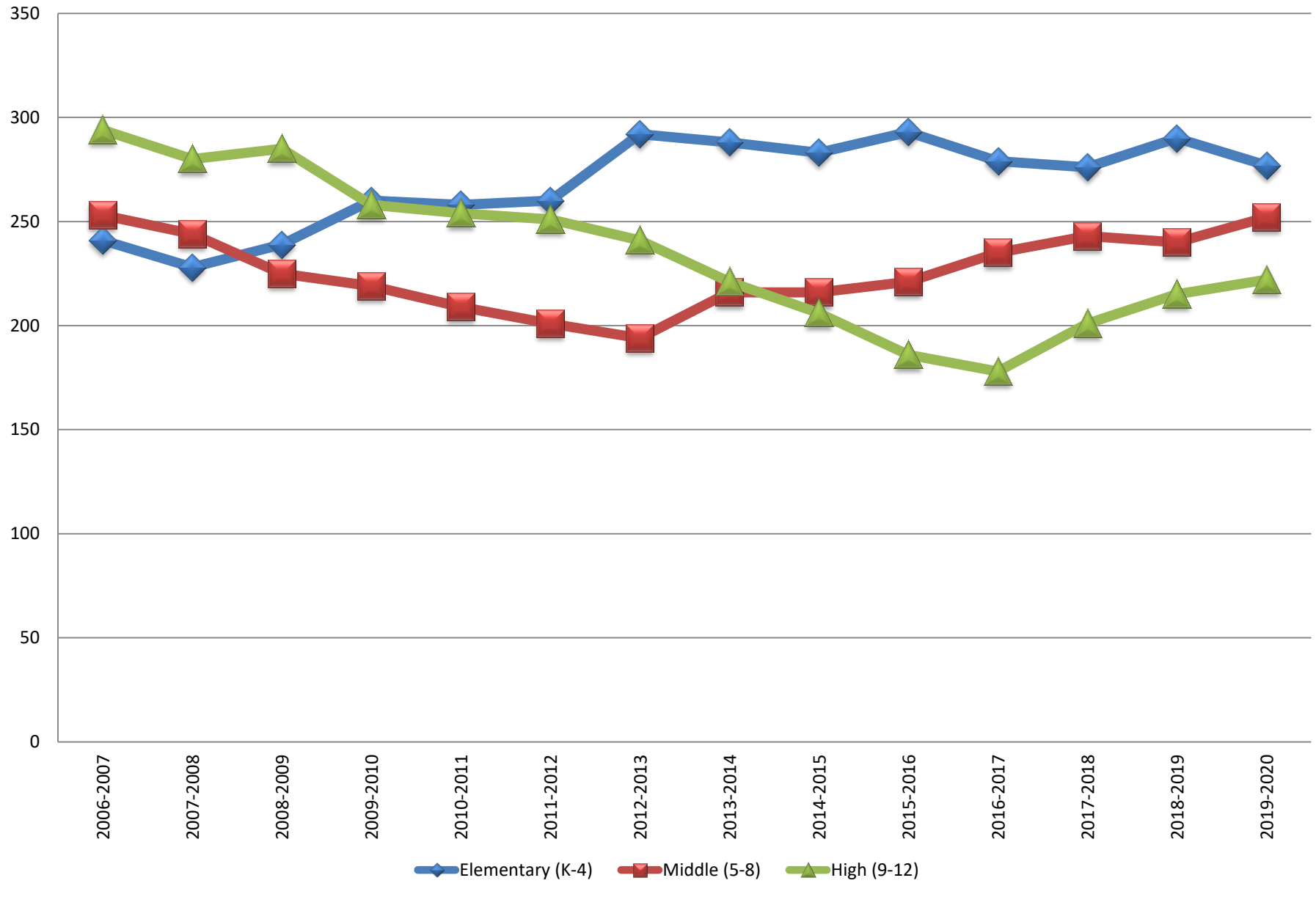
Middle School Totals	2006-2007	253
	2007-2008	244
	2008-2009	225
	2009-2010	219
	2010-2011	209
	2011-2012	201
	2012-2013	194
	2013-2014	216
	2014-2015	216
	2015-2016	221
	2016-2017	235
	2017-2018	243
	2018-2019	240
	2019-2020	252

High School Totals	2006-2007	294
	2007-2008	280
	2008-2009	285
	2009-2010	258
	2010-2011	254
	2011-2012	251
	2012-2013	241
	2013-2014	221
	2014-2015	206
	2015-2016	186
	2016-2017	178
	2017-2018	201
	2018-2019	215
	2019-2020	222

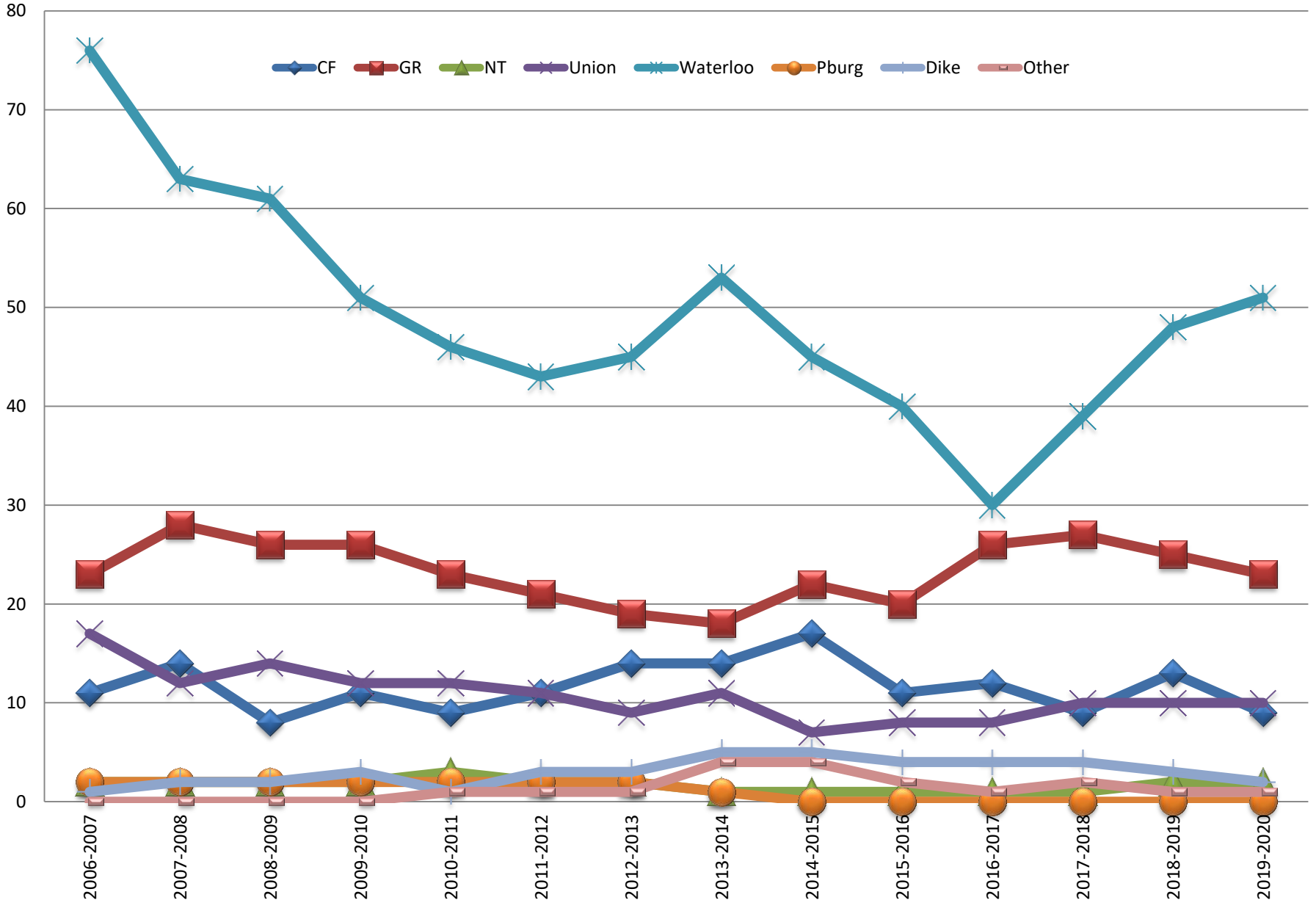
BEDS Enrollment



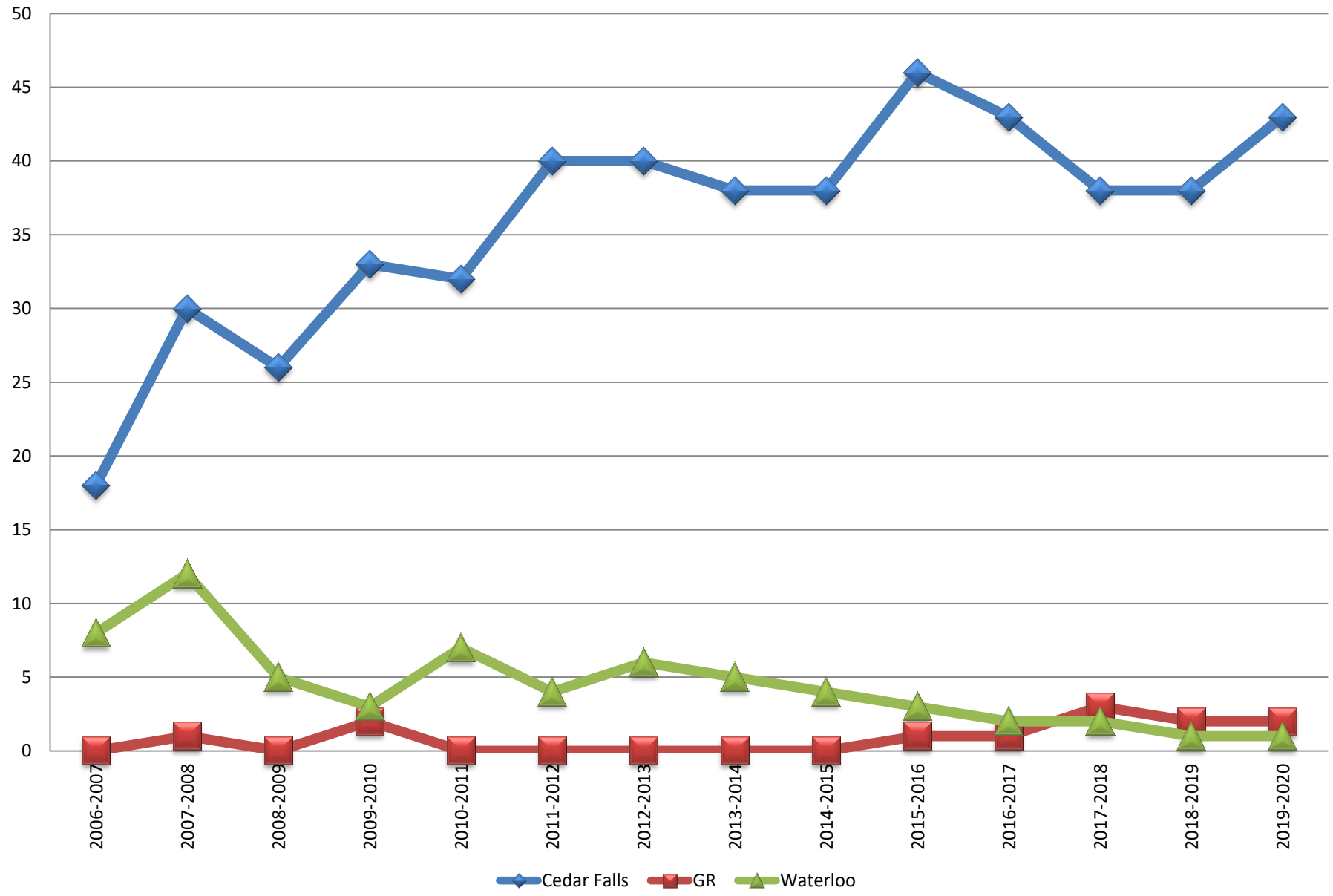
Enrollment Trend By Building



Open Enroll Into Hudson



Open Enroll Out of Hudson



Certified Enrollment Projection-Cohort Methodology

	2017-2018	2018-2019	2019-2020	2020-2021	2021-2022	2022-2023	2023-2024	2024-2025	2025-2026	2026-2027	2027-2028	2028-2029	2029-2030	2030-2031
K	6	5	6	6	6	6	6	6	6	6	6	6	6	6
1	8	8	4	6	6	6	6	6	6	6	6	6	6	6
2	4	9	7	4	6	6	6	6	6	6	6	6	6	6
3	8	5	8	7	4	6	6	6	6	6	6	6	6	6
4	4	12	6	8	7	4	6	6	6	6	6	6	6	6
5	7	5	8	6	8	7	4	6	6	6	6	6	6	6
6	3	8	6	8	6	8	7	4	6	6	6	6	6	6
7	9	4	8	6	8	6	8	7	4	6	6	6	6	6
8	7	9	6	8	6	8	6	8	7	4	6	6	6	6
9	11	10	8	6	8	6	8	6	8	7	4	6	6	6
10	10	11	9	8	6	8	6	8	6	8	7	4	6	6
11	7	8	11	10	8	6	8	6	8	6	8	7	4	6
12	8	6	9	11	10	8	6	8	6	8	6	8	7	4
OE In Projection	92	100	96	94	89	85	83	83	81	81	79	79	77	76
Headcount Projection	720	745	751	759	746	742	749	744						
Residents In District	628	645	655	665	657	657	666	661	-81	-81	-79	-79	-77	-76
	2017-2018	2018-2019	2019-2020	2020-2021	2021-2022	2022-2023	2023-2024	2024-2025	2025-2026	2026-2027	2027-2028	2028-2029	2029-2030	2030-2031
K	4	6	2	2	2	2	2	2	2	2	2	2	2	2
1	3	3	8	2	2	2	2	2	2	2	2	2	2	2
2	5	4	4	8	2	2	2	2	2	2	2	2	2	2
3	0	4	3	4	8	2	2	2	2	2	2	2	2	2
4	5	0	4	3	4	8	2	2	2	2	2	2	2	2
5	3	4	0	4	3	4	8	2	2	2	2	2	2	2
6	5	1	4	0	4	3	4	8	2	2	2	2	2	2
7	3	4	1	4	0	4	3	4	8	2	2	2	2	2
8	5	3	5	1	4	0	4	3	4	8	2	2	2	2
9	2	4	3	5	1	4	0	4	3	4	8	2	2	2
10	2	2	6	3	5	1	4	0	4	3	4	8	2	2
11	2	2	2	6	3	5	1	4	0	4	3	4	8	2
12	6	4	4	2	6	3	5	1	4	0	4	3	4	8
OE Out Projection	45	41	46	44	44	40	39	36	37	35	37	35	34	32
Tuition Out	5	5	5	5	5	5	5							
CE Projection	678	691	706	714	706	702	710	697	-44	-46	-42	-44	-43	-44

Certified Enrollment

2008-2009	678	
2009-2010	678	
2010-2011	667	
2011-2012	664	-3
2012-2013	692	28
2013-2014	670	-22
2014-2015	652	-18
2015-2016	679.22	27
2016-2017	665.95	-13
2017-2018	676.95	11
2018-2019	689.42	12
2019-2020	702.42	13
Change in five years		23

