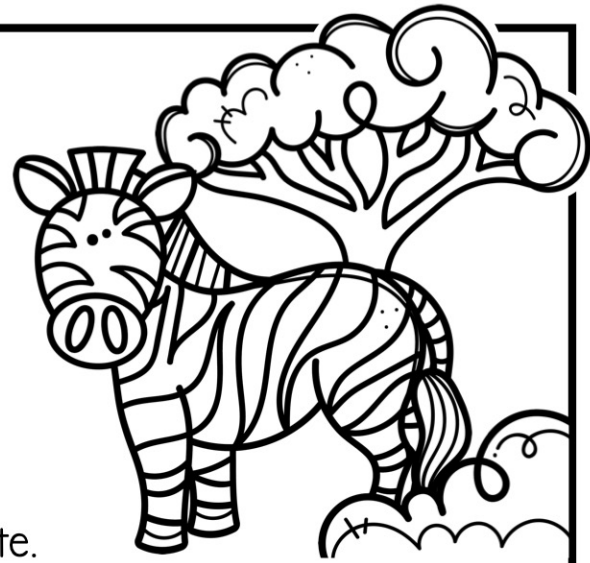


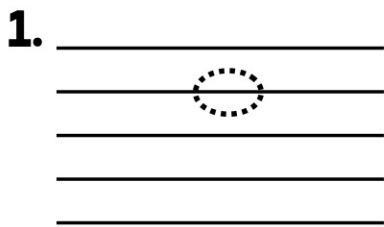
# LINE TRACER



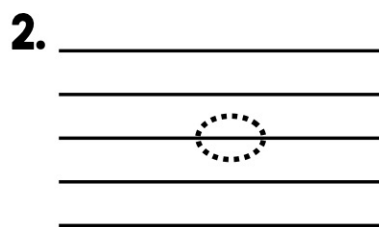
NAME: \_\_\_\_\_

## **DIRECTIONS:**

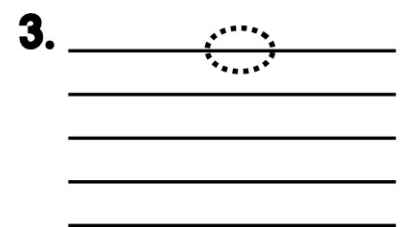
Trace the dotted line on each staff to reveal a line note.



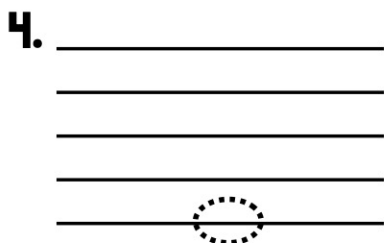
**LINE 4**



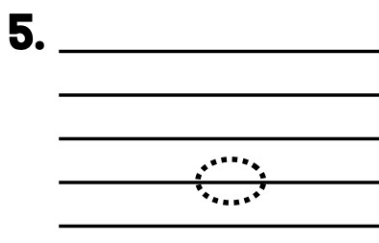
**LINE 3**



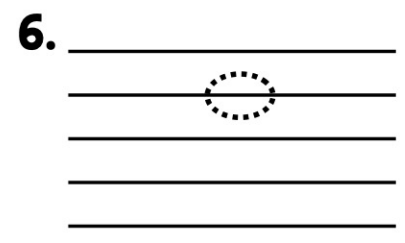
**LINE 5**



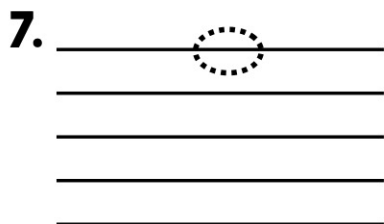
**LINE 1**



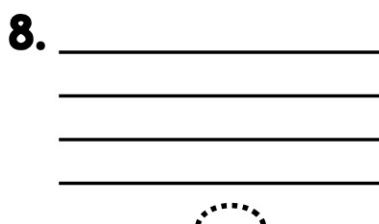
**LINE 2**



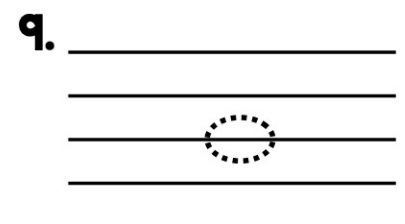
**LINE 4**



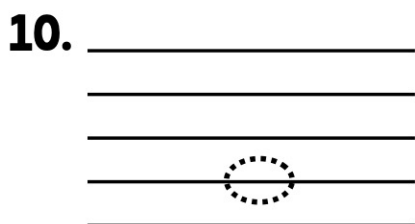
**LINE 5**



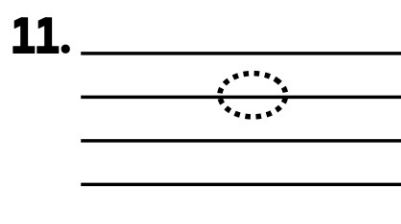
**LINE 1**



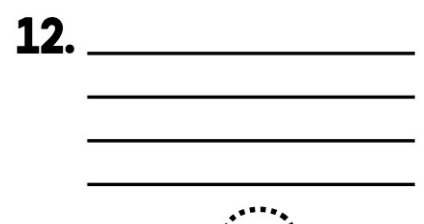
**LINE 3**



**LINE 2**



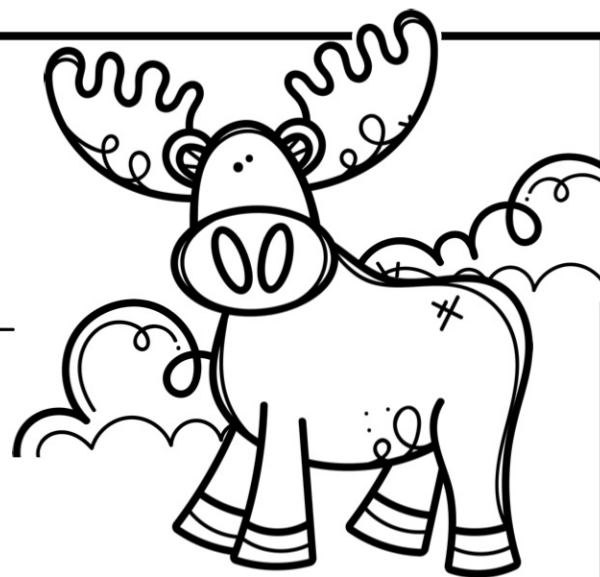
**LINE 4**



**LINE 1**

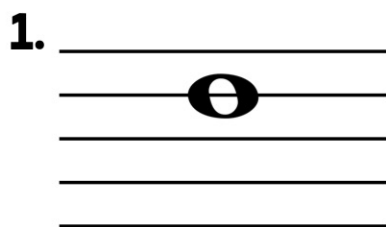
# WHICH LINE?

NAME: \_\_\_\_\_

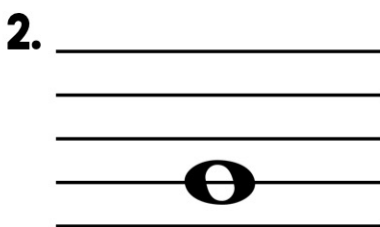


## **DIRECTIONS:**

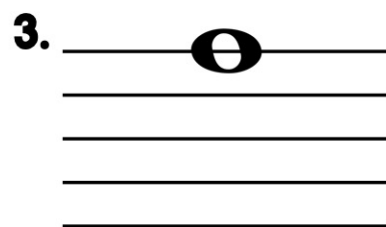
Determine which number line each note is placed, then circle your answer below the staff.



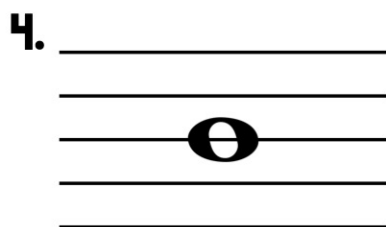
1 2 3 4 5



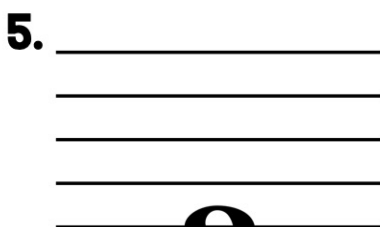
1 2 3 4 5



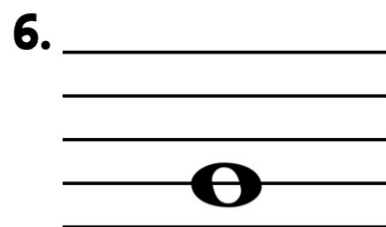
1 2 3 4 5



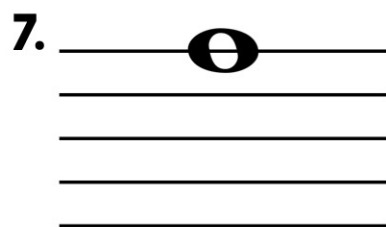
1 2 3 4 5



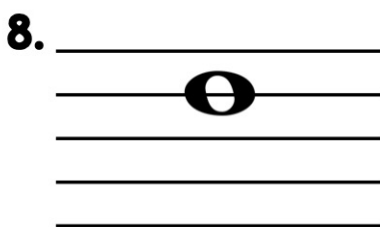
1 2 3 4 5



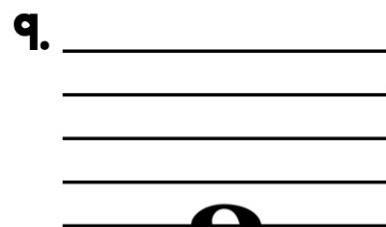
1 2 3 4 5



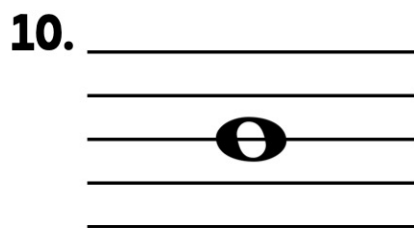
1 2 3 4 5



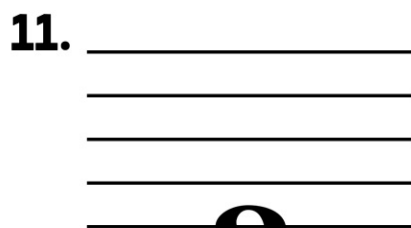
1 2 3 4 5



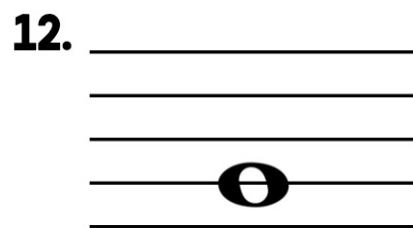
1 2 3 4 5



1 2 3 4 5



1 2 3 4 5



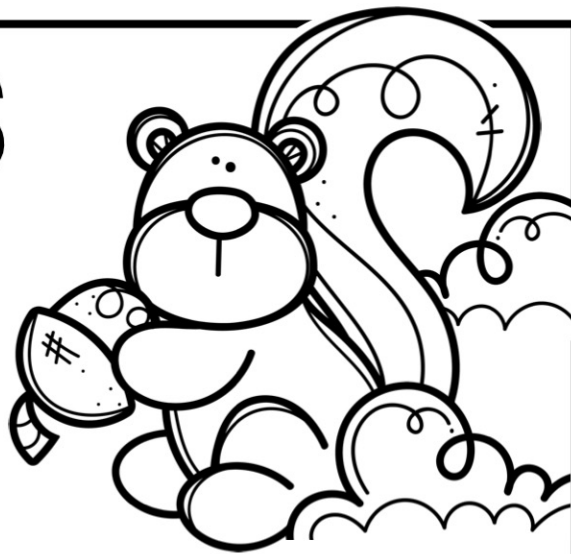
1 2 3 4 5

# LINE NUMBERS

NAME: \_\_\_\_\_

## **DIRECTIONS:**

Determine which number line each note is placed,  
then write your answers below the staff.



Handwriting practice lines for identifying musical notes. Each staff consists of five horizontal lines. Notes are placed on specific lines, and the corresponding line number (1-5) is to be written below the staff.

Staff 1: Note on the 4th line. Answer: 4

Staff 2: Note on the 2nd line. Answer: 2

Staff 3: Note on the 3rd line. Answer: 3

Staff 4: Note on the 1st line. Answer: 1

Staff 5: Note on the 2nd line. Answer: 2

Staff 6: Note on the 4th line. Answer: 4

Staff 7: Note on the 3rd line. Answer: 3

Staff 8: Note on the 1st line. Answer: 1

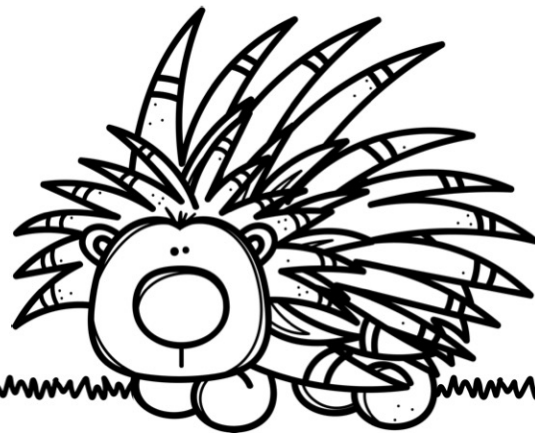
Staff 9: Note on the 2nd line. Answer: 2

Staff 10: Note on the 4th line. Answer: 4

Staff 11: Note on the 3rd line. Answer: 3

Staff 12: Note on the 1st line. Answer: 1

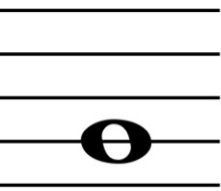
# LINE BLUFF

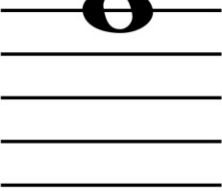


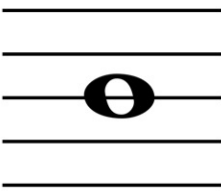
NAME: \_\_\_\_\_

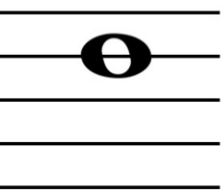
## **DIRECTIONS:**

Look at the two boxes next to each staff. One box shows the correct line placement, the other shows incorrect line placement. Shade in the box with the correct answer.

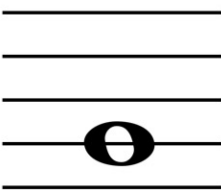
1.  2 3

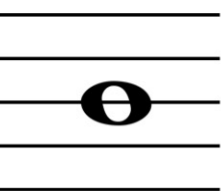
2.  4 5

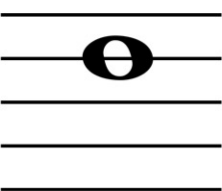
3.  3 1

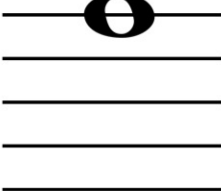
4.  5 4

5.  2 1

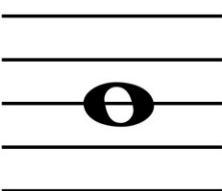
6.  2 3

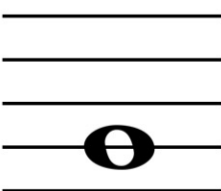
7.  3 2

8.  4 5

9.  3 5

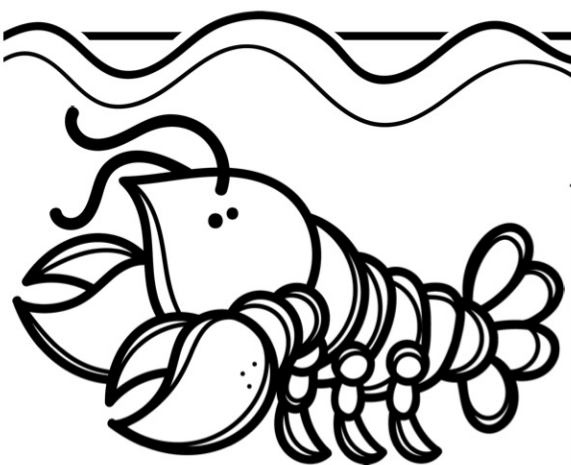
10.  5 1

11.  3 4

12.  1 2




# LINE PLACER



NAME: \_\_\_\_\_

## **DIRECTIONS:**

Draw a line note on each staff as indicated by the number to the side.

1. \_\_\_\_\_  
\_\_\_\_\_  
\_\_\_\_\_   
\_\_\_\_\_  
\_\_\_\_\_

line  
**3**

2. \_\_\_\_\_  
\_\_\_\_\_  
\_\_\_\_\_  
\_\_\_\_\_  
\_\_\_\_\_

line  
**5**

3. \_\_\_\_\_  
\_\_\_\_\_  
\_\_\_\_\_  
\_\_\_\_\_  
\_\_\_\_\_

line  
**1**

4. \_\_\_\_\_  
\_\_\_\_\_  
\_\_\_\_\_  
\_\_\_\_\_  
\_\_\_\_\_

line  
**2**

5. \_\_\_\_\_  
\_\_\_\_\_  
\_\_\_\_\_  
\_\_\_\_\_  
\_\_\_\_\_

line  
**4**

6. \_\_\_\_\_  
\_\_\_\_\_  
\_\_\_\_\_  
\_\_\_\_\_  
\_\_\_\_\_

line  
**3**

7. \_\_\_\_\_  
\_\_\_\_\_  
\_\_\_\_\_  
\_\_\_\_\_  
\_\_\_\_\_

line  
**1**

8. \_\_\_\_\_  
\_\_\_\_\_  
\_\_\_\_\_  
\_\_\_\_\_  
\_\_\_\_\_

line  
**5**

9. \_\_\_\_\_  
\_\_\_\_\_  
\_\_\_\_\_  
\_\_\_\_\_  
\_\_\_\_\_

line  
**2**

10. \_\_\_\_\_  
\_\_\_\_\_  
\_\_\_\_\_  
\_\_\_\_\_  
\_\_\_\_\_

line  
**4**

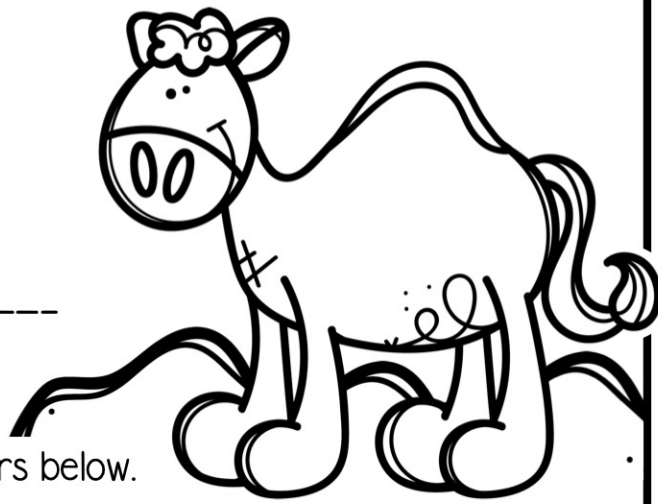
11. \_\_\_\_\_  
\_\_\_\_\_  
\_\_\_\_\_  
\_\_\_\_\_  
\_\_\_\_\_

line  
**3**

12. \_\_\_\_\_  
\_\_\_\_\_  
\_\_\_\_\_  
\_\_\_\_\_  
\_\_\_\_\_

line  
**1**

# LINE PLACER



NAME: \_\_\_\_\_

## **DIRECTIONS:**

Draw line notes on each staff as indicated by the numbers below.



2

5

3

1

2

4

3

2

4

5

3

1

5

1

3

4

5

2

4

2

5

1

4

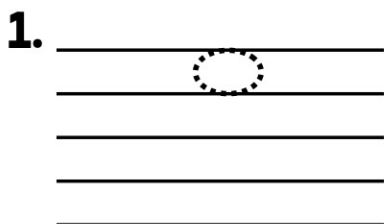
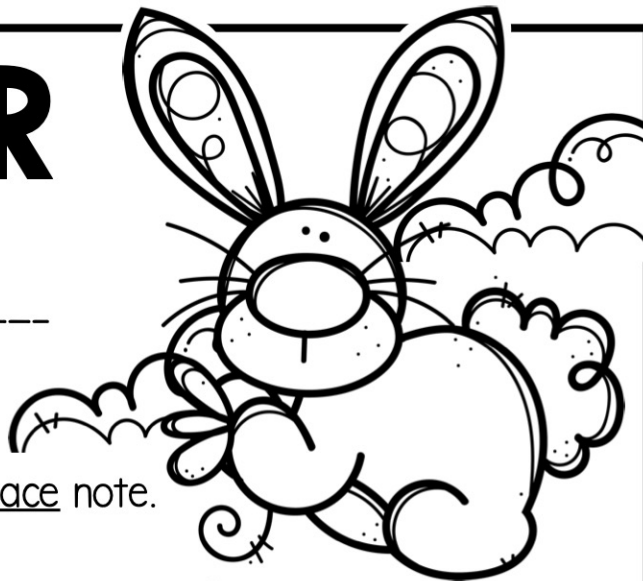
3

# SPACE TRACER

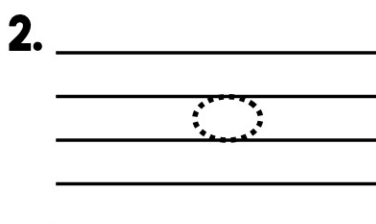
NAME: \_\_\_\_\_

## **DIRECTIONS:**

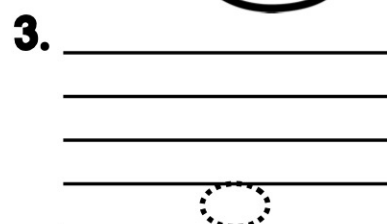
Trace the dotted line on each staff to reveal a space note.



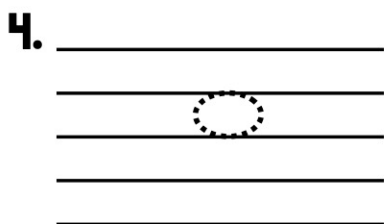
**SPACE 4**



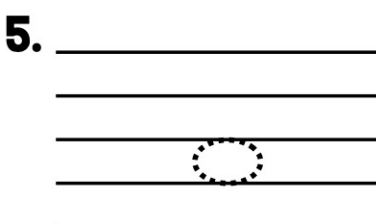
**SPACE 3**



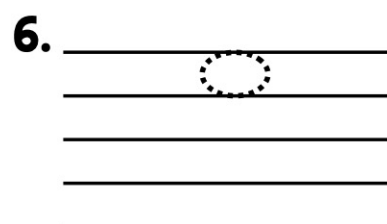
**SPACE 1**



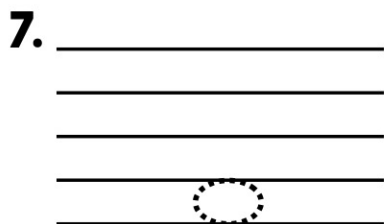
**SPACE 3**



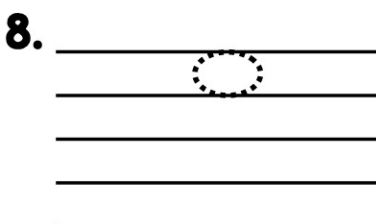
**SPACE 2**



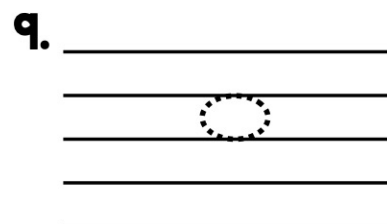
**SPACE 4**



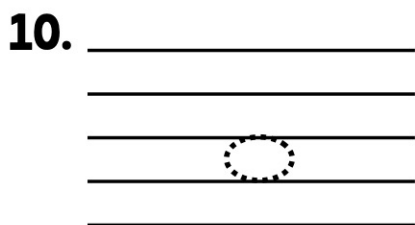
**SPACE 1**



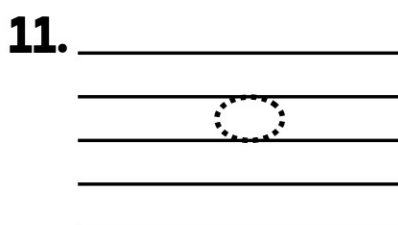
**SPACE 4**



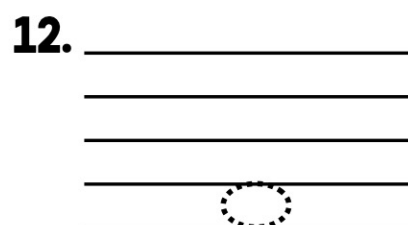
**SPACE 3**



**SPACE 2**

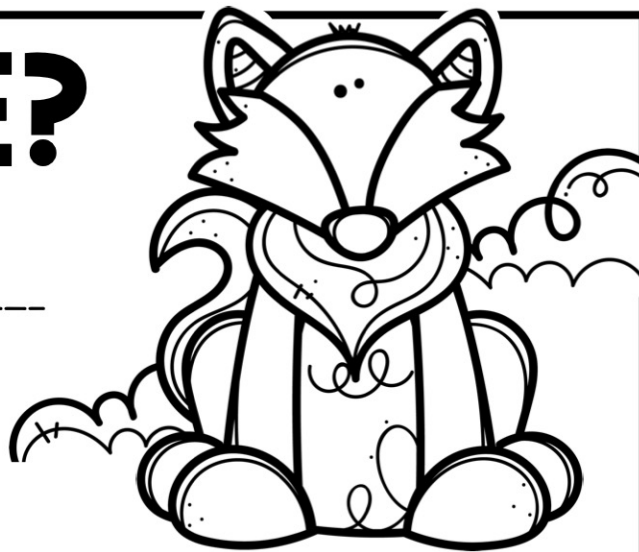


**SPACE 3**



**SPACE 1**

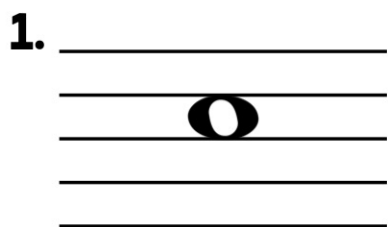
# WHICH SPACE?



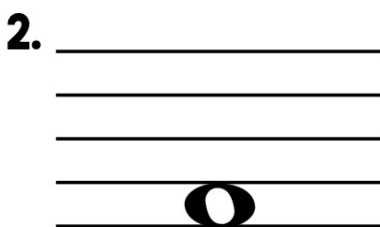
NAME: \_\_\_\_\_

## **DIRECTIONS:**

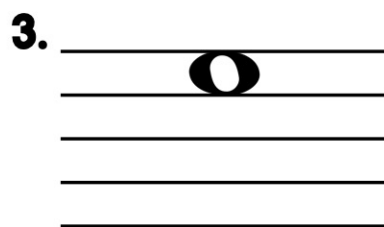
Determine which number space each note is placed, then circle your answer below the staff.



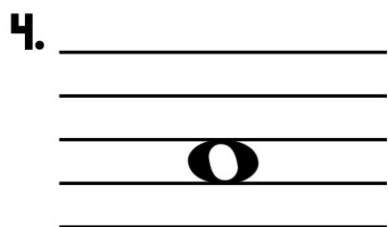
1 2 3 4



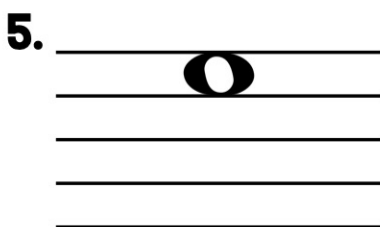
1 2 3 4



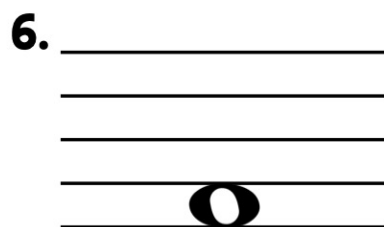
1 2 3 4



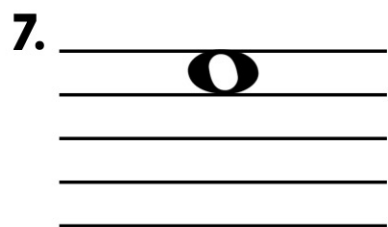
1 2 3 4



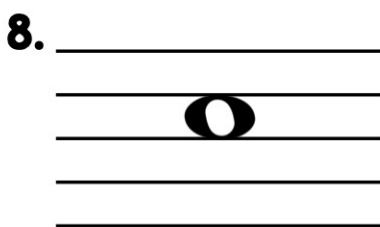
1 2 3 4



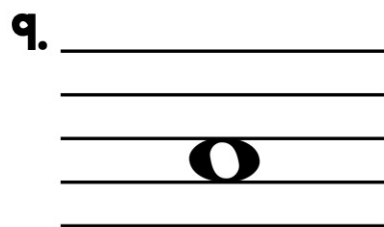
1 2 3 4



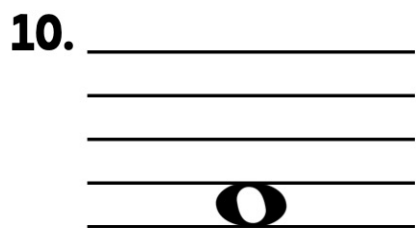
1 2 3 4



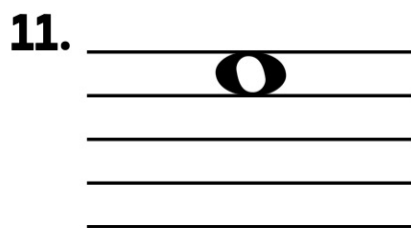
1 2 3 4



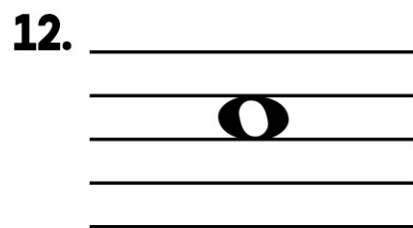
1 2 3 4



1 2 3 4

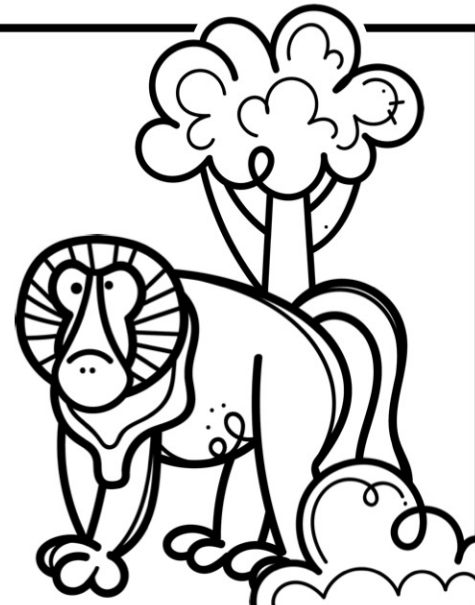


1 2 3 4



1 2 3 4

# SPACE NUMBERS



NAME: \_\_\_\_\_

## **DIRECTIONS:**

Determine which number space each note is placed,  
then write your answers below the staff.

Four musical staves are provided for practice. Each staff consists of five horizontal lines. Notes are placed on various lines and spaces. Below each staff is a row of six horizontal lines for writing the corresponding space number.

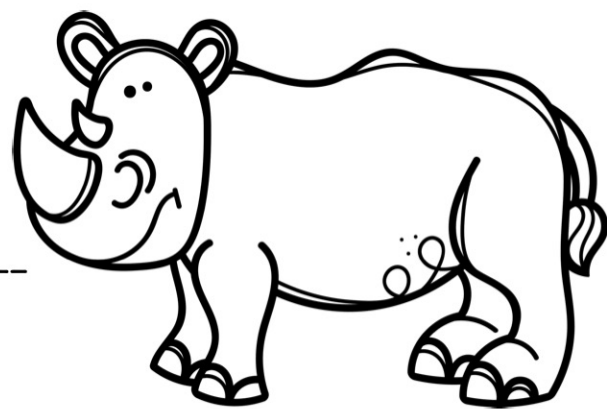
Staff 1: Notes on the 2nd line, 4th line, and 5th line. Below the staff are six horizontal lines for answers.

Staff 2: Notes on the 1st line, 3rd space, 4th space, and 5th line. Below the staff are six horizontal lines for answers.

Staff 3: Notes on the 1st line, 2nd space, 3rd line, 4th space, and 5th line. Below the staff are six horizontal lines for answers.

Staff 4: Notes on the 1st line, 2nd space, 3rd line, 4th space, and 5th line. Below the staff are six horizontal lines for answers.

# SPACE BLUFF

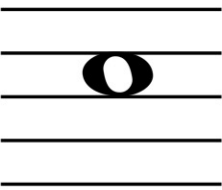


NAME: \_\_\_\_\_

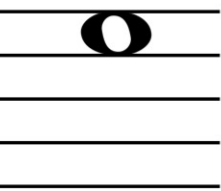
## **DIRECTIONS:**

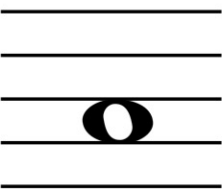
Look at the two boxes next to each staff. One box shows the correct space placement, the other shows incorrect space placement. Shade in the box with the correct answer.

1.  1 2

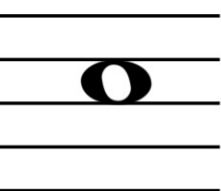
2.  4 3

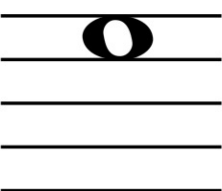
3.  2 1

4.  3 4

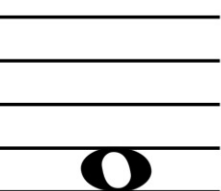
5.  4 2

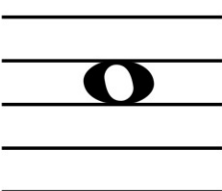
6.  1 3

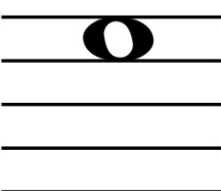
7.  3 2

8.  4 1

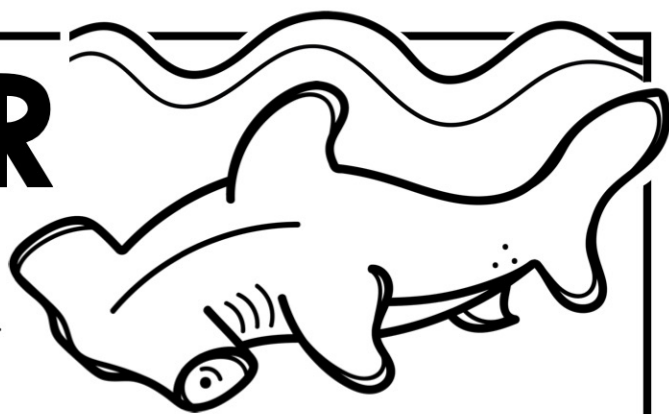
9.  3 2

10.  2 1

11.  3 2

12.  3 4

# SPACE PLACER



NAME: \_\_\_\_\_

## **DIRECTIONS:**

Draw a space note on each staff as indicated by the number to the side.

1. \_\_\_\_\_  
\_\_\_\_\_  
\_\_\_\_\_  
\_\_\_\_\_ space  
**1**

2. \_\_\_\_\_  
\_\_\_\_\_  
\_\_\_\_\_  
\_\_\_\_\_ space  
**3**

3. \_\_\_\_\_  
\_\_\_\_\_  
\_\_\_\_\_  
\_\_\_\_\_ space  
**2**

4. \_\_\_\_\_  
\_\_\_\_\_  
\_\_\_\_\_  
\_\_\_\_\_ space  
**4**

5. \_\_\_\_\_  
\_\_\_\_\_  
\_\_\_\_\_  
\_\_\_\_\_ space  
**2**

6. \_\_\_\_\_  
\_\_\_\_\_  
\_\_\_\_\_  
\_\_\_\_\_ space  
**1**

7. \_\_\_\_\_  
\_\_\_\_\_  
\_\_\_\_\_  
\_\_\_\_\_ space  
**3**

8. \_\_\_\_\_  
\_\_\_\_\_  
\_\_\_\_\_  
\_\_\_\_\_ space  
**4**

9. \_\_\_\_\_  
\_\_\_\_\_  
\_\_\_\_\_  
\_\_\_\_\_ space  
**2**

10. \_\_\_\_\_  
\_\_\_\_\_  
\_\_\_\_\_  
\_\_\_\_\_ space  
**4**

11. \_\_\_\_\_  
\_\_\_\_\_  
\_\_\_\_\_  
\_\_\_\_\_ space  
**1**

12. \_\_\_\_\_  
\_\_\_\_\_  
\_\_\_\_\_  
\_\_\_\_\_ space  
**3**

# SPACE PLACER



NAME: \_\_\_\_\_

## **DIRECTIONS:**

Draw space notes on each staff as indicated by the numbers below.



2

4

1

3

2

1

4

1

3

2

4

3

1

4

2

3

1

4

3

2

4

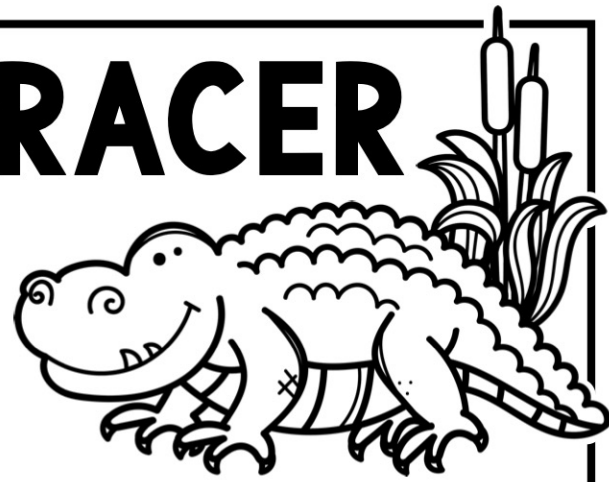
1

3

2



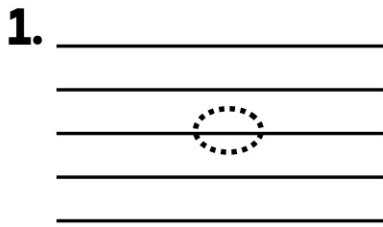
# LINE/SPACE TRACER



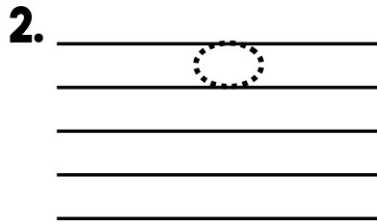
NAME: \_\_\_\_\_

## **DIRECTIONS:**

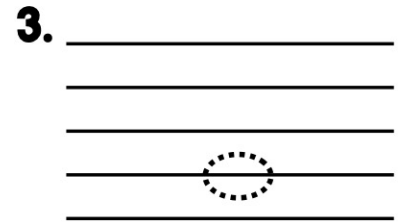
Trace the dotted line on each staff to reveal a line or space note.



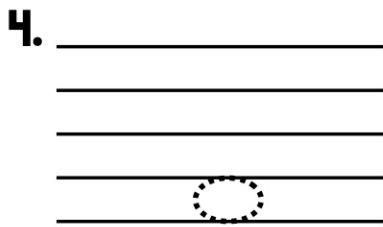
**LINE 3**



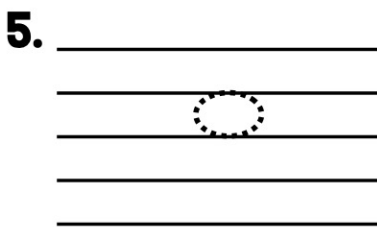
**SPACE 4**



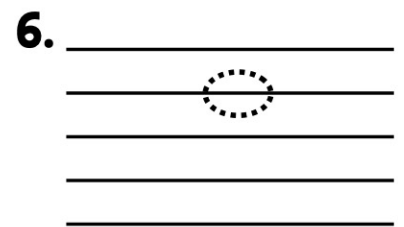
**LINE 2**



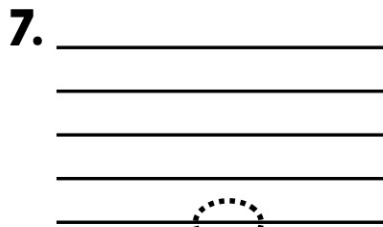
**SPACE 1**



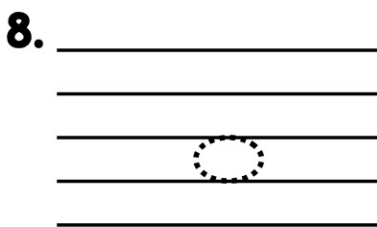
**SPACE 3**



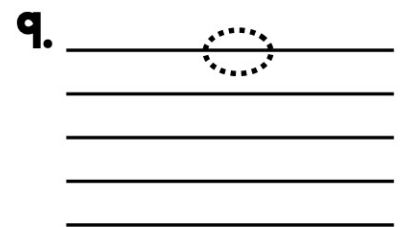
**LINE 4**



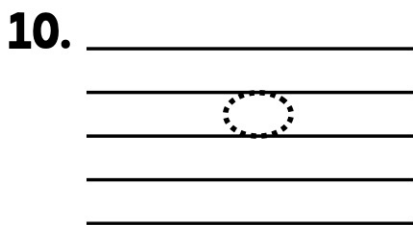
**LINE 1**



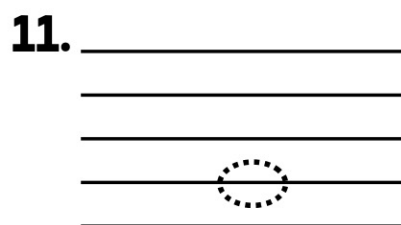
**SPACE 2**



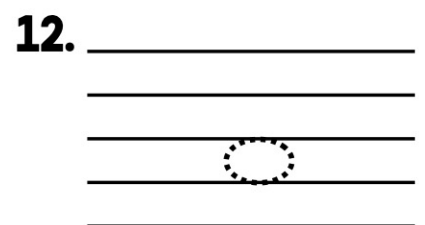
**LINE 5**



**SPACE 3**

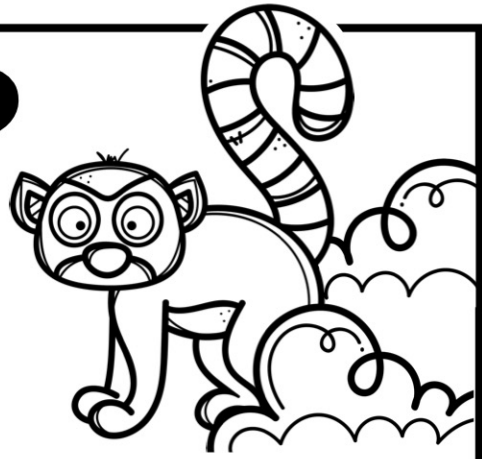


**LINE 2**



**SPACE 2**

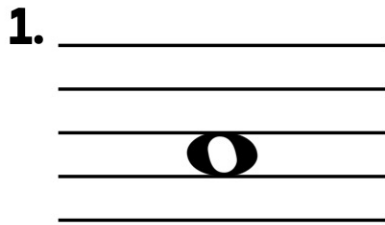
# LINE OR SPACE?



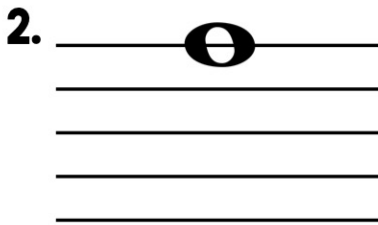
NAME: \_\_\_\_\_

## **DIRECTIONS:**

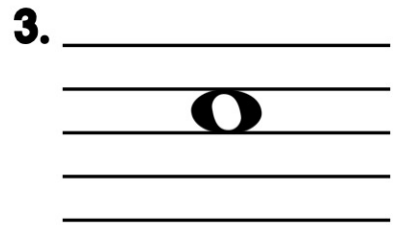
Look at the note on each staff. Circle whether it is placed on a line or space.



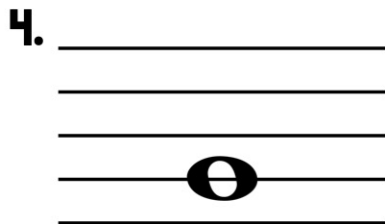
**LINE or SPACE**



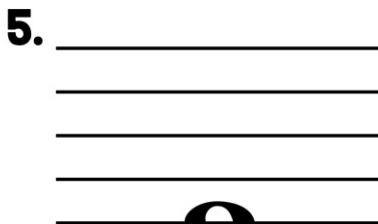
**LINE or SPACE**



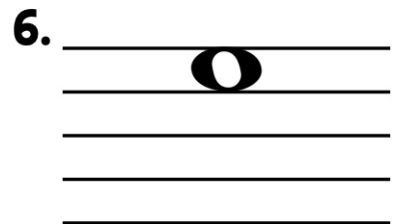
**LINE or SPACE**



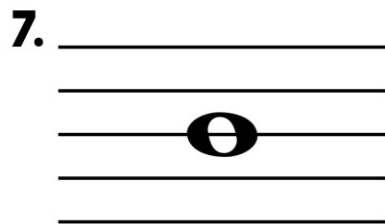
**LINE or SPACE**



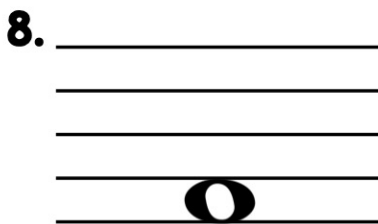
**LINE or SPACE**



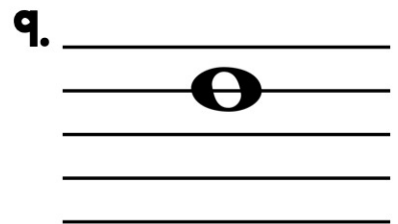
**LINE or SPACE**



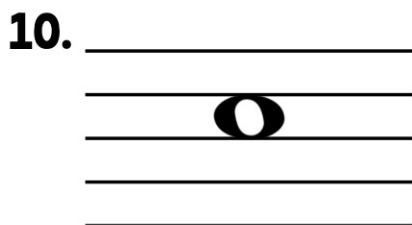
**LINE or SPACE**



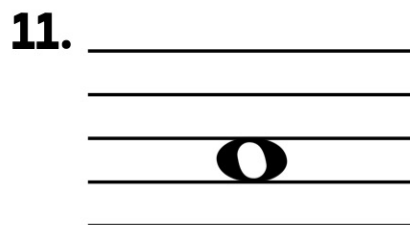
**LINE or SPACE**



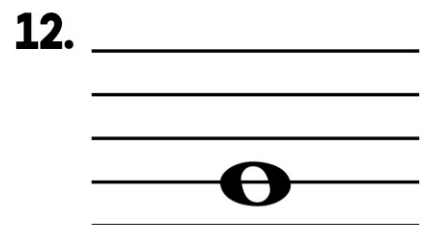
**LINE or SPACE**



**LINE or SPACE**



**LINE or SPACE**



**LINE or SPACE**

# LINE OR SPACE?



NAME: \_\_\_\_\_

## **DIRECTIONS:**

Look at the notes on each staff. Write an **L** if the note is on a line.

Write an **S** if the note is on a space.

Handwriting practice sheet with five musical staves. Each staff contains a sequence of notes (half notes) and a corresponding line or space for the student to write 'L' or 'S'.

Staff 1: Notes on lines 1, 3, and 5. Spaces 2 and 4 are empty.

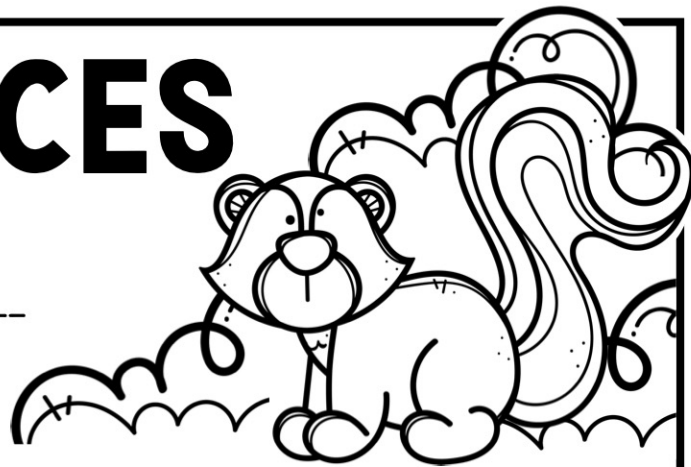
Staff 2: Notes on spaces 1, 3, and 5. Lines 2 and 4 are empty.

Staff 3: Notes on lines 1, 3, and 5. Spaces 2 and 4 are empty.

Staff 4: Notes on spaces 1, 3, and 5. Lines 2 and 4 are empty.

Staff 5: Notes on lines 1, 3, and 5. Spaces 2 and 4 are empty.

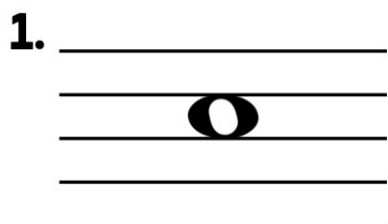
# LINES & SPACES



NAME: \_\_\_\_\_

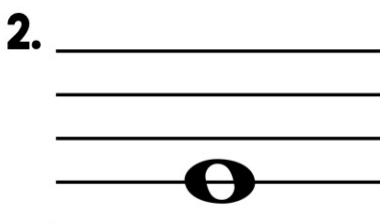
## DIRECTIONS:

Look at the note on each staff. Circle whether the note is on a line or space, then circle which number line or space the note is placed.



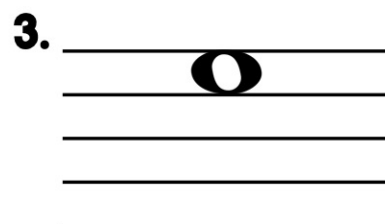
**LINE or SPACE**

**1 2 3 4 5**



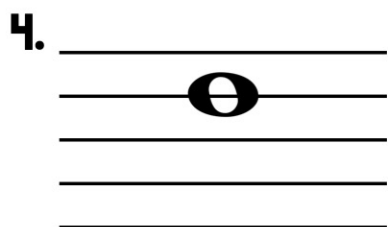
**LINE or SPACE**

**1 2 3 4 5**



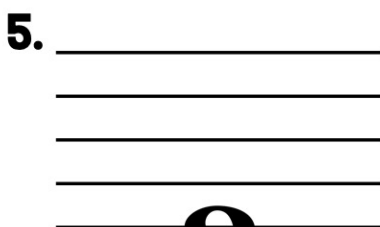
**LINE or SPACE**

**1 2 3 4 5**



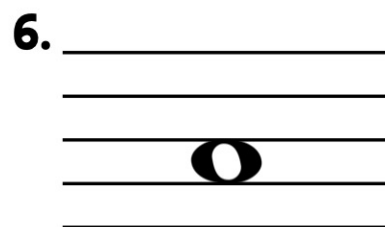
**LINE or SPACE**

**1 2 3 4 5**



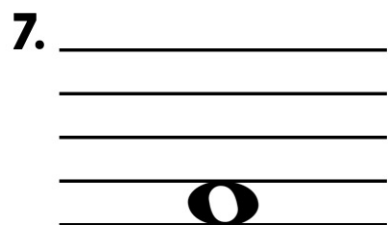
**LINE or SPACE**

**1 2 3 4 5**



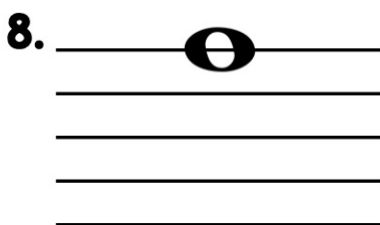
**LINE or SPACE**

**1 2 3 4 5**



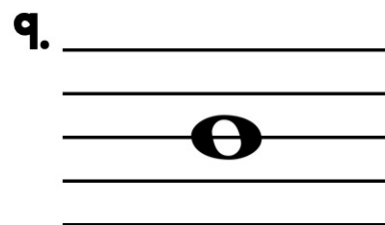
**LINE or SPACE**

**1 2 3 4 5**



**LINE or SPACE**

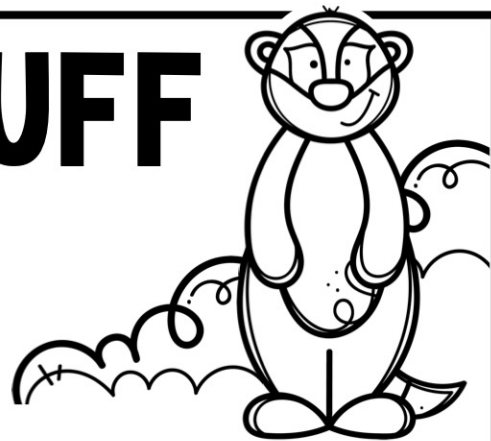
**1 2 3 4 5**



**LINE or SPACE**

**1 2 3 4 5**

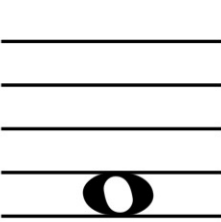
# LINE/SPACE BLUFF

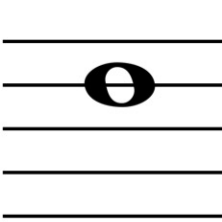


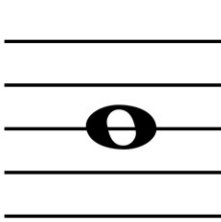
NAME: \_\_\_\_\_

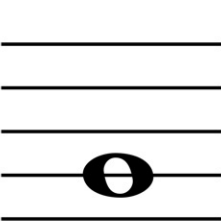
## **DIRECTIONS:**

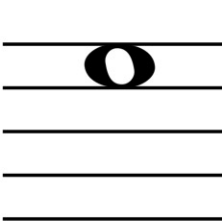
Look at the two boxes next to each staff. One box shows the correct note placement, the other shows incorrect note placement. Shade in the box with the correct answer.

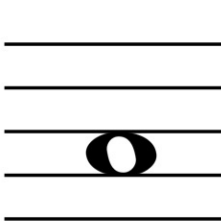
1.  space  
**2** space  
**1**

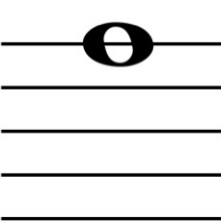
2.  line  
**4** line  
**5**

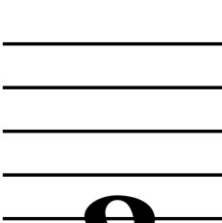
3.  space  
**3** line  
**3**

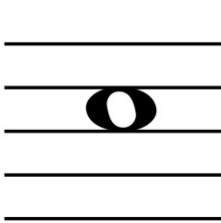
4.  line  
**2** space  
**2**

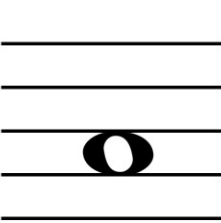
5.  space  
**4** space  
**3**

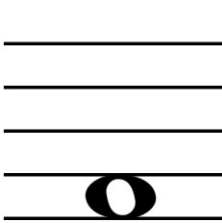
6.  line  
**1** space  
**2**

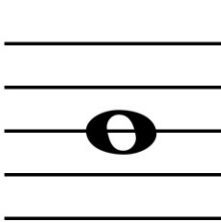
7.  space  
**4** line  
**5**

8.  line  
**1** space  
**1**

9.  space  
**3** space  
**2**

10.  space  
**2** line  
**3**

11.  line  
**2** space  
**1**

12.  line  
**3** line  
**4**

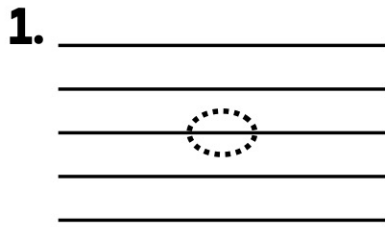
# LINE/SPACE PLACER



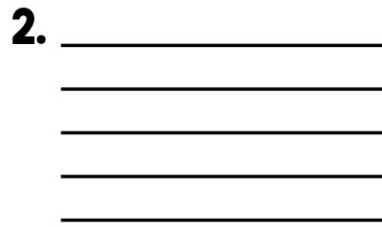
NAME: \_\_\_\_\_

## **DIRECTIONS:**

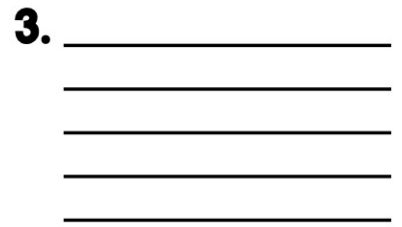
Draw a line or space note on each staff as indicated by the information below.



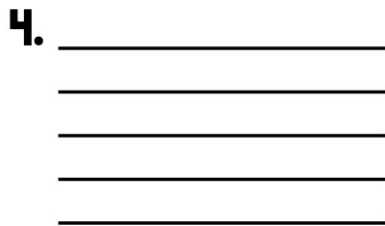
**LINE 3**



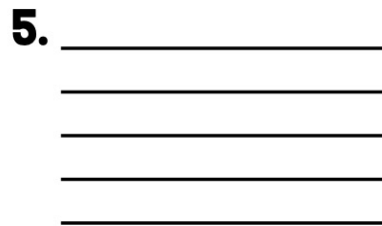
**SPACE 1**



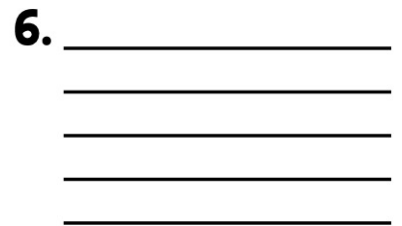
**LINE 5**



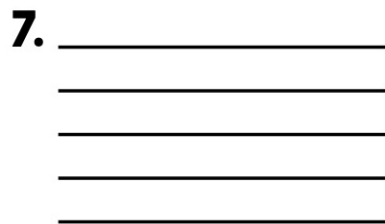
**SPACE 2**



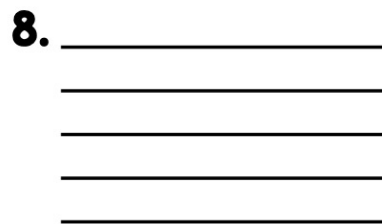
**LINE 2**



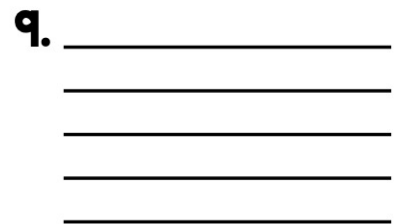
**LINE 1**



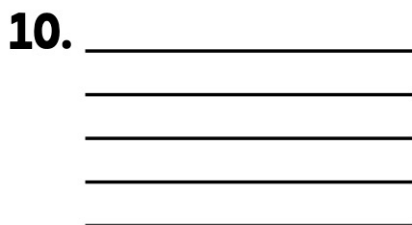
**SPACE 4**



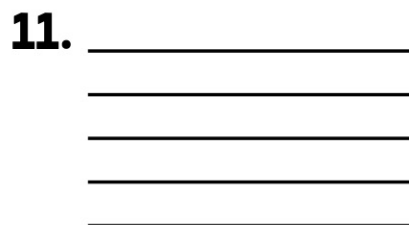
**SPACE 3**



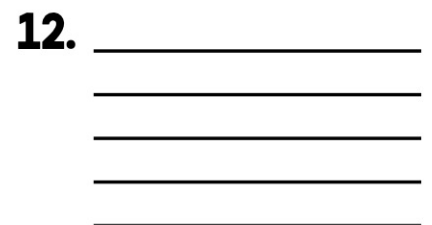
**LINE 4**



**LINE 3**



**SPACE 1**



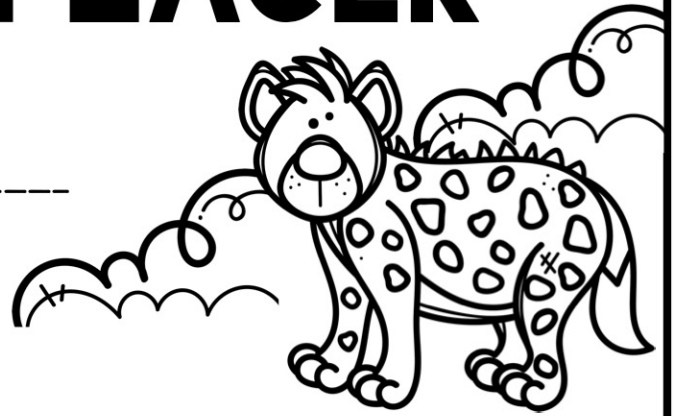
**SPACE 2**

# LINE/SPACE PLACER

NAME: \_\_\_\_\_

## **DIRECTIONS:**

Draw a line or space note as indicated by the information below each staff.



**S3**

(space 3)

**L4**

(line 4)

**L1**

**S2**

**L3**

**S4**

**L5**

**L2**

**S1**

**S3**

**L4**

**S2**

**L1**

**S4**

**L3**

**L1**

**S1**

**L5**

**S3**

**L4**

**S2**

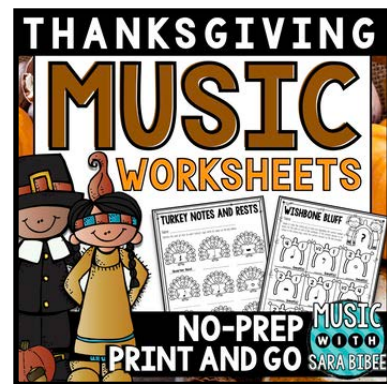
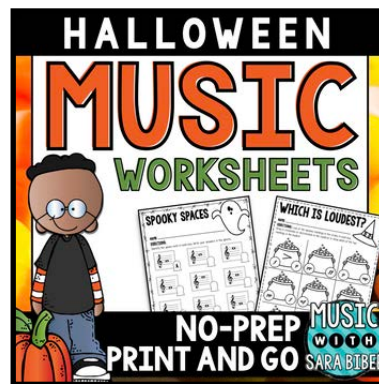
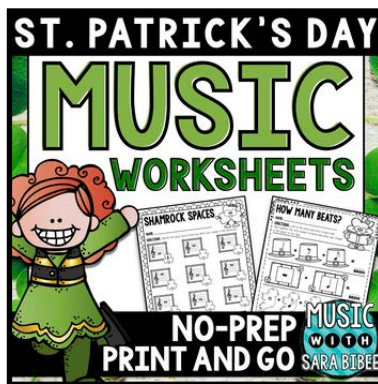
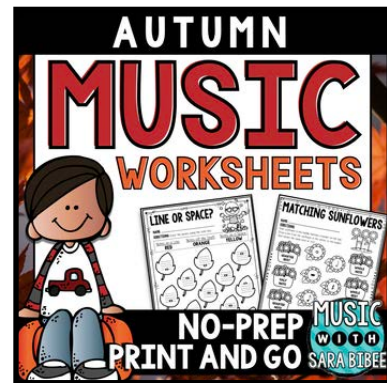
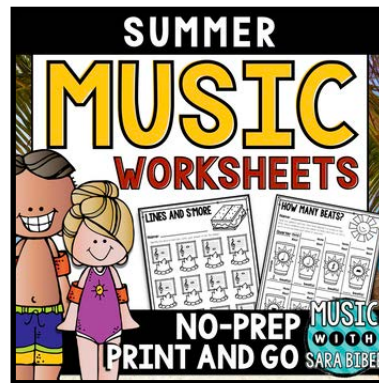
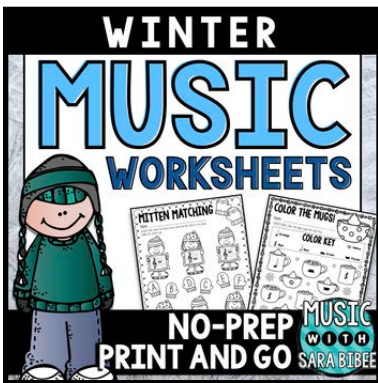
**S1**

**L2**

**S4**



IF YOU LIKED THIS RESOURCE,  
*You may also like:*







OR, YOU CAN CHECK OUT MY  
*Other categories!*



*click here for*  
**FREEBIES!**



*click here for*  
**NO PREP  
WORKSHEETS**



*click here for*  
**COLORING  
ACTIVITIES**



*click here for*  
**GAMES &  
FUN STUFF**



*click here for*  
**RECORDER  
RESOURCES**



*click here for*  
**DÉCOR &  
PRINTABLES**



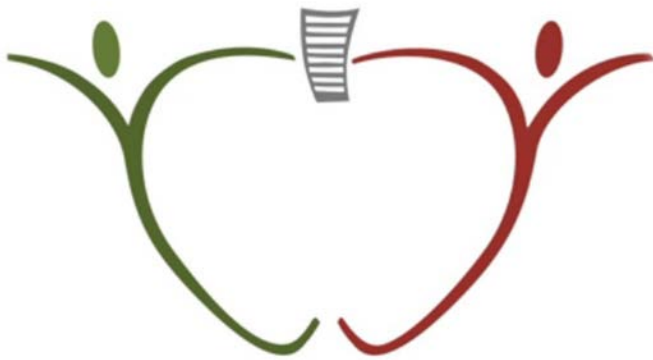
*click here for*  
**COMPOSER  
STUDY**



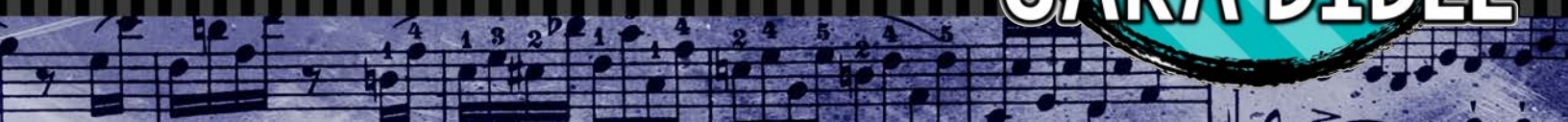


# Follow Me!

Follow me on TpT and Facebook for the latest news, freebies, and more!  
Click the icons below.



Thanks!







# Copyright Info

This product was made by Sara Bibee. If you have not obtained this product by purchasing through Teachers Pay Teachers, or from Sara Bibee herself, you may be in violation of copyright. If you are not the original purchaser, please go to my TpT store to purchase the item. You may click my store icon below to be directed to my site.

This product is to be used for personal and educational uses only. You may not distribute this file to other persons (students, parents, district websites, etc.) in printed or electronic form unless being used solely in the classroom/educational/license purchaser's space. PLEASE! DO NOT store my files in public storage sites. If you have further questions about copyright, please email me at: [MusicWithSaraBibee@gmail.com](mailto:MusicWithSaraBibee@gmail.com).

*Thanks!*





# Feedback helps!

If you have a moment, please leave feedback on freebies and paid downloads! You can earn credits toward future TpT purchases, and quality feedback helps both sellers and educators alike!

You can leave feedback by going to the “My Purchases” section of your TpT account, or by visiting specific product pages.

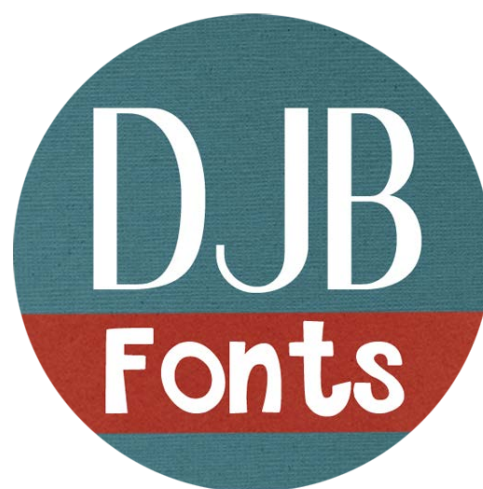
*Thank you!*





# CREDITS

Thank you to the following artists for the amazing fonts and clipart:



kimberly  
geswein  
fonts

