

District Profile

USD 365 Garnett

Table of Contents:

Census Demographics:

County Profile Information

Census Data - Geographic Comparison City, District, County, and State

School District Demographics:

Enrollment Trends by Type, Race, and Lunch Status

Dropout Rate

Chronic Absenteeism Rates

Trends in Attendance Rates

College and Career Readiness - Assessments and Achievement:

Trends in Graduation Cohort Groups

ACT Scores

Postsecondary Progress

District Reading Scores by Proficiency Level, Subgroup, and Grade

District Math Scores by Proficiency Level, Subgroup, and Grade

District Comparisons:

US Census / American Community Survey Data

KSDE Data

Additional Data Available by Special Request:

Data Provided by:



County Profile Information

Anderson County, Kansas

According to figures provided in the Kansas Statistical Abstract, the population of Anderson county was approximately 7878 in 2018. This represents a -2.76% change or net migration since the 2010 United States Census. With a total number of 579.6 square miles in the county, the population density for the county is 13.6 people per square mile. This places the county in the KDHE population peer group of a Rural area. According to projections reported in the Kansas Statistical Abstract, the percentage change in total population through the year 2044 is estimated at -9.25 for the county.

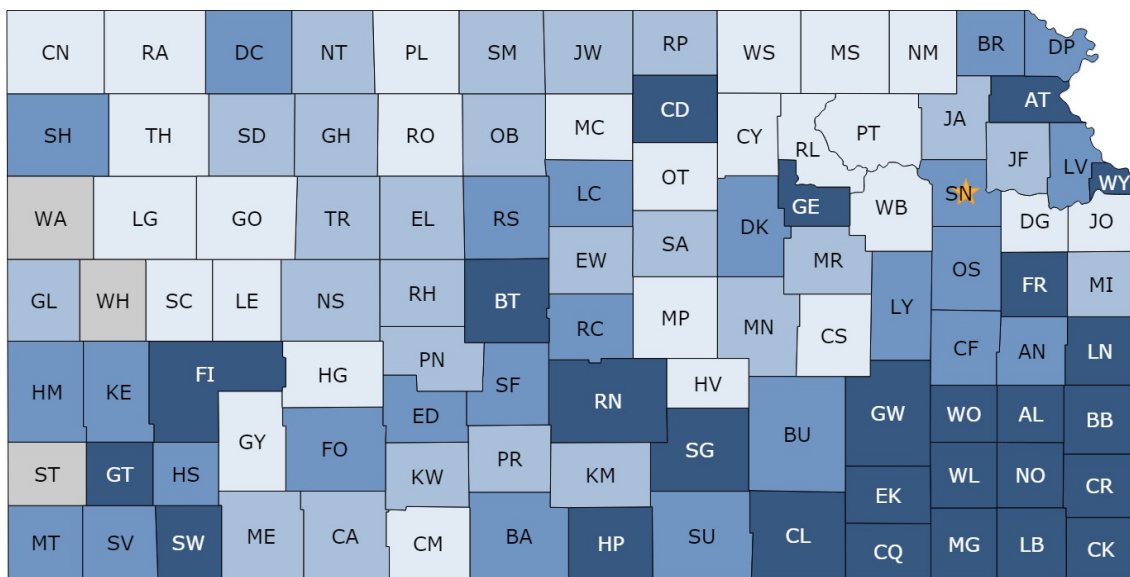
County Health Rankings:

The County Health Rankings (provided by the Robert Wood Johnson Foundation) measure the health of nearly all counties in the nation and rank them within states. The Rankings are compiled using county-level measures from a variety of national and state data sources with 1 being the best.

The overall rankings in health factors represent what influences the health of a county. They are an estimate of the future health of counties as compared to other counties within a state. The ranks are based on four types of measures: health behaviors, clinical care, social and economic, and physical environment factors.

Details regarding this data can be found at: <http://www.countyhealthrankings.org/#app/>

Anderson County Health Factor Ranking 2019: 61 / 102



Rank 1-26 Rank 27-51 Rank 52-76 Rank 77-102 Not Ranked

US Census: County / District Comparison

US Census: American Community Survey
5-Year Data 2018

Garnett

District
365

Anderson
County

Kansas

FAMILY INCOME:

Median Family Income	\$61,750	\$63,500	\$62,373	\$73,222
Mean Family Income	\$65,494	\$71,850	\$70,600	\$93,587
Percent of families with children in poverty	17.5	16.1	16.2	13
Percent of households with Public Asst income	2	2.7	2.5	1.6
Percent of households with Food Stamp benefits	8.2	7.5	7.3	8.1

EDUCATIONAL ATTAINMENT: Population over 25 years old - percent

Less than 9th grade	2.3	5.2	4.6	3.7
9th to 12th grade - No Diploma	4.1	3.3	4.1	5.6
Total with No High School Diploma / GED	6.4	8.5	8.7	9.3
High School Diploma or Equivalency Only	42.5	42.3	41.5	26
Bachelor's Degree or More	93.5	17.8	17.5	32.9

HOUSEHOLD COMPOSITION:

Percent of households that are families	53.9	64.7	65.9	65.1
Average family size	3	3.21	3.2	3.11
Married couple families (children under 18)	19.1	19.3	18.8	20.7
Single parent household- female only	5	4.5	4.3	6
Single parent household- male only	1.1	1	1.9	2.5

HOUSING DATA:

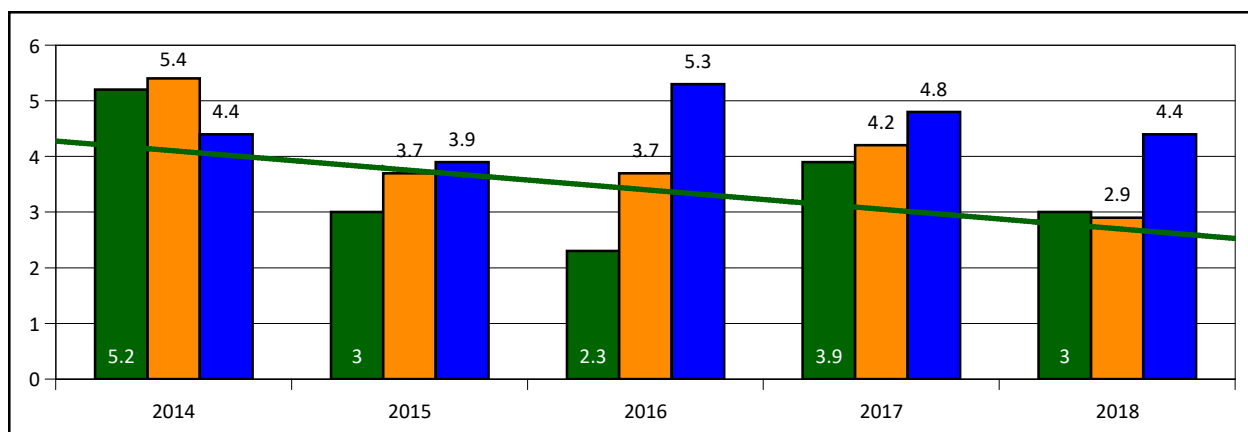
Year housing built - median age / years	60	55	56	45
Median value of owner-occupied homes	\$80,400	\$96,100	\$93,400	\$145,400
Vacancy rate of all housing units	18.6	17.1	11.2	11.2

UNEMPLOYMENT DATA:

District Rate

County Rate

State Rate



*Source: American Community Survey 5-Year Estimates

EMPLOYMENT STATUS - % Population over 16 who are in the civilian labor force and not employed

US Census: County / District Comparison

US Census: American Community Survey
5-Year Data 2018

Greeley

District
365

Anderson
County

Kansas

FAMILY INCOME:

Median Family Income	\$58,750	\$63,500	\$62,373	\$73,222
Mean Family Income	\$55,915	\$71,850	\$70,600	\$93,587
Percent of families with children in poverty	12	16.1	16.2	13
Percent of households with Public Asst income	0	2.7	2.5	1.6
Percent of households with Food Stamp benefits	13.1	7.5	7.3	8.1

EDUCATIONAL ATTAINMENT: Population over 25 years old - percent

Less than 9th grade	0	5.2	4.6	3.7
9th to 12th grade - No Diploma	3.4	3.3	4.1	5.6
Total with No High School Diploma / GED	3.4	8.5	8.7	9.3
High School Diploma or Equivalency Only	54.3	42.3	41.5	26
Bachelor's Degree or More	96.6	17.8	17.5	32.9

HOUSEHOLD COMPOSITION:

Percent of households that are families	51.4	64.7	65.9	65.1
Average family size	3.51	3.21	3.2	3.11
Married couple families (children under 18)	13.1	19.3	18.8	20.7
Single parent household- female only	3.7	4.5	4.3	6
Single parent household- male only	5.6	1	1.9	2.5

HOUSING DATA:

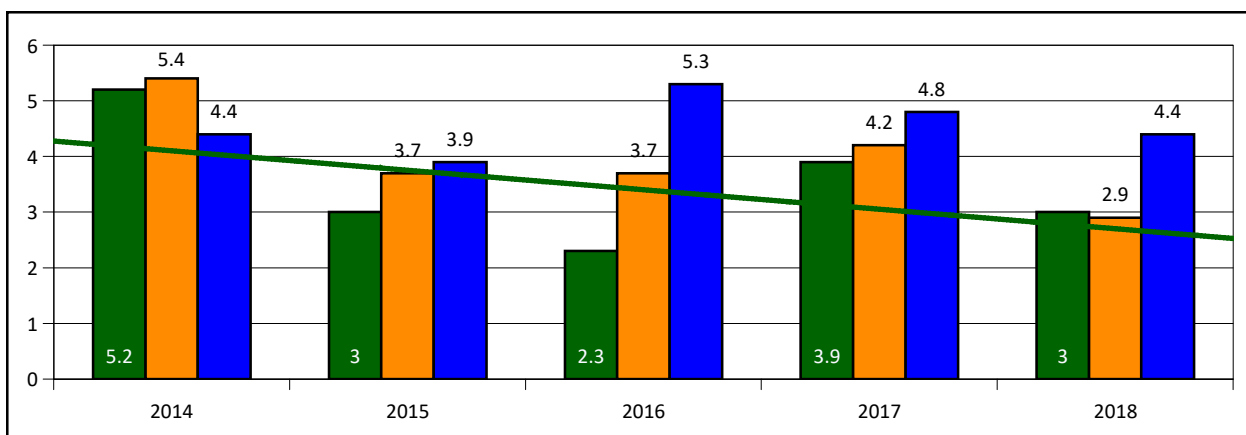
Year housing built - median age / years	79	55	56	45
Median value of owner-occupied homes	\$62,500	\$96,100	\$93,400	\$145,400
Vacancy rate of all housing units	21.3	17.1	11.2	11.2

UNEMPLOYMENT DATA:

District Rate

County Rate

State Rate



*Source: American Community Survey 5-Year Estimates

EMPLOYMENT STATUS - % Population over 16 who are in the civilian labor force and not employed

US Census: County / District Comparison

US Census: American Community Survey
5-Year Data 2018

Westphalia

District
365

Anderson
County

Kansas

FAMILY INCOME:

Median Family Income	\$55,417	\$63,500	\$62,373	\$73,222
Mean Family Income	\$58,435	\$71,850	\$70,600	\$93,587
Percent of families with children in poverty	10	16.1	16.2	13
Percent of households with Public Asst income	0	2.7	2.5	1.6
Percent of households with Food Stamp benefits	8.9	7.5	7.3	8.1

EDUCATIONAL ATTAINMENT: Population over 25 years old - percent

Less than 9th grade	10.3	5.2	4.6	3.7
9th to 12th grade - No Diploma	3.7	3.3	4.1	5.6
Total with No High School Diploma / GED	14	8.5	8.7	9.3
High School Diploma or Equivalency Only	55.1	42.3	41.5	26
Bachelor's Degree or More	86	17.8	17.5	32.9

HOUSEHOLD COMPOSITION:

Percent of households that are families	87.5	64.7	65.9	65.1
Average family size	3.04	3.21	3.2	3.11
Married couple families (children under 18)	23.2	19.3	18.8	20.7
Single parent household- female only	7.1	4.5	4.3	6
Single parent household- male only	5.4	1	1.9	2.5

HOUSING DATA:

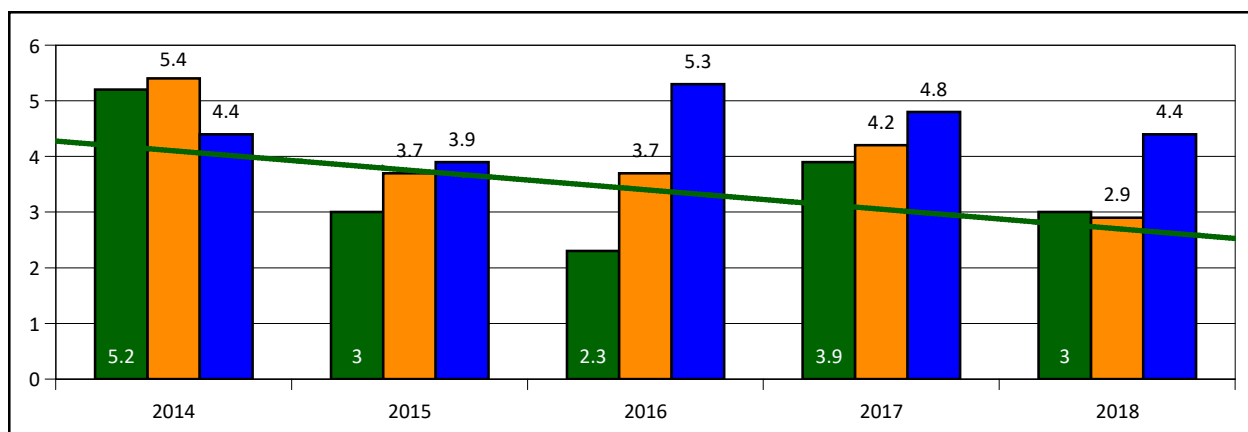
Year housing built - median age / years	79	55	56	45
Median value of owner-occupied homes	\$42,500	\$96,100	\$93,400	\$145,400
Vacancy rate of all housing units	15.2	17.1	11.2	11.2

UNEMPLOYMENT DATA:

District Rate

County Rate

State Rate



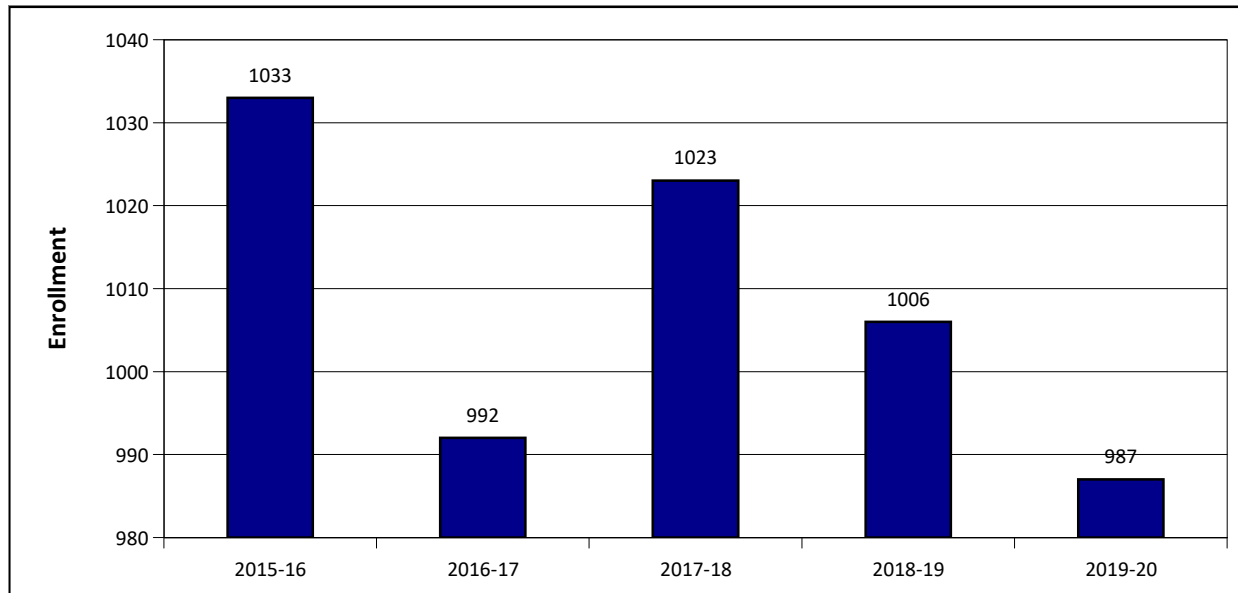
*Source: American Community Survey 5-Year Estimates

EMPLOYMENT STATUS - % Population over 16 who are in the civilian labor force and not employed

School Demographics

*SOURCE: KSDE School Finance Reports - Free Reduced Enrollment (Building Totals - Headcount Enroll Sept 20)

HEADCOUNT ENROLLMENT TRENDS:

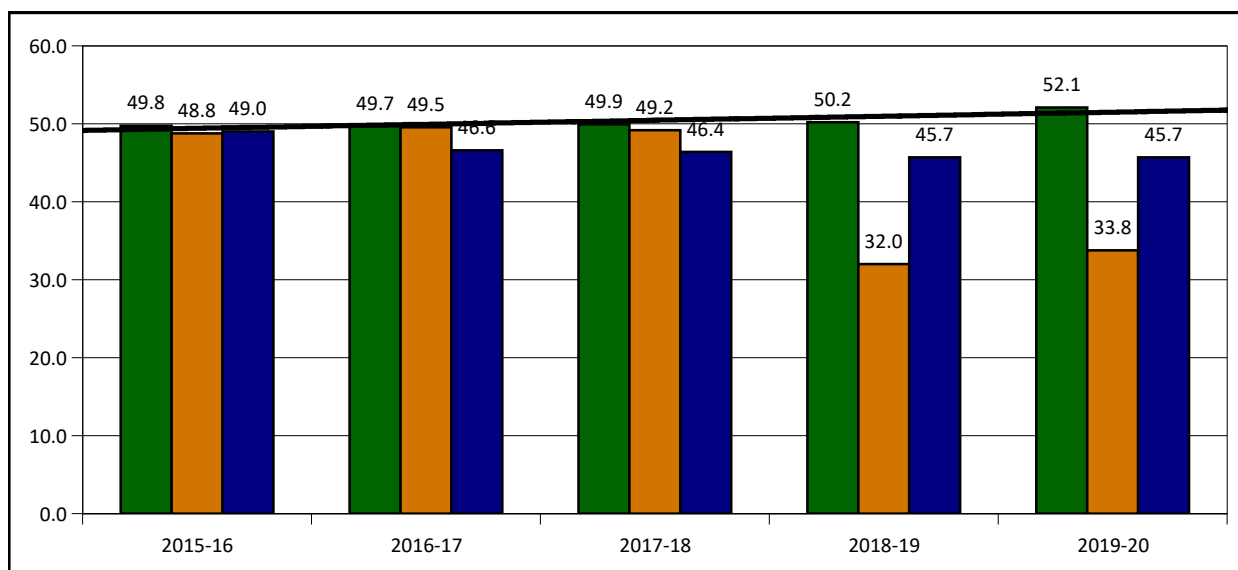


*SOURCE: KSDE Comparative Performance Fiscal System

COMPARATIVE HISTORY FREE REDUCED LUNCH ELIGIBILITY:

The following chart shows the eligibility for free and reduced lunches over time as compared to the county (public schools only) and state averages for the same school years.

School % █ County % █ State % █

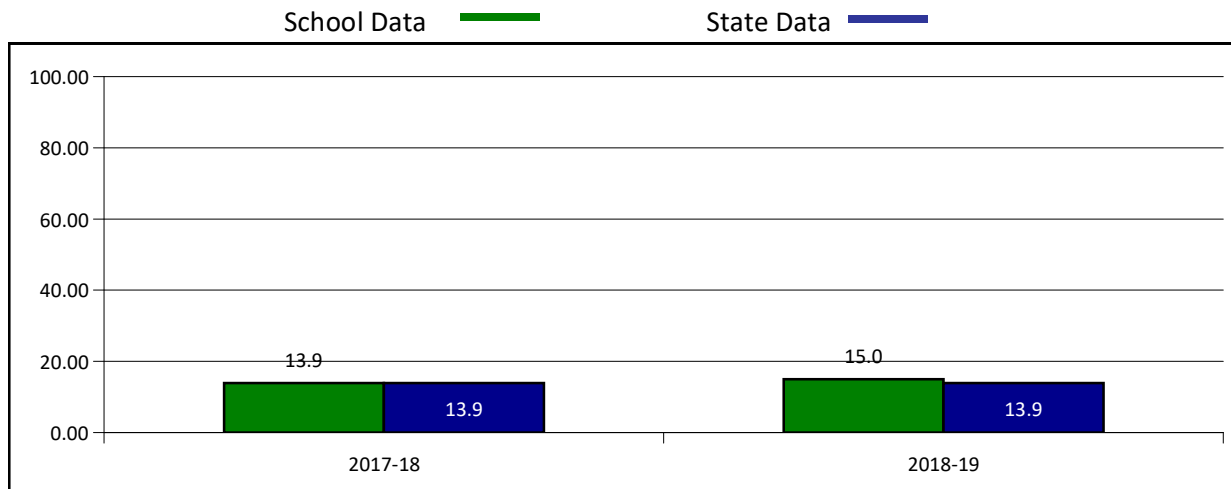


CHRONIC ABSENTEEISM

The calculation for attendance rate is days in attendance divided by days in membership. A student is deemed chronically absent if a student misses 10% or more of school days.

*For grade-level specific data, please refer to your AMOSS report.

PERCENT CHRONICALLY ABSENT (ALL STUDENTS):

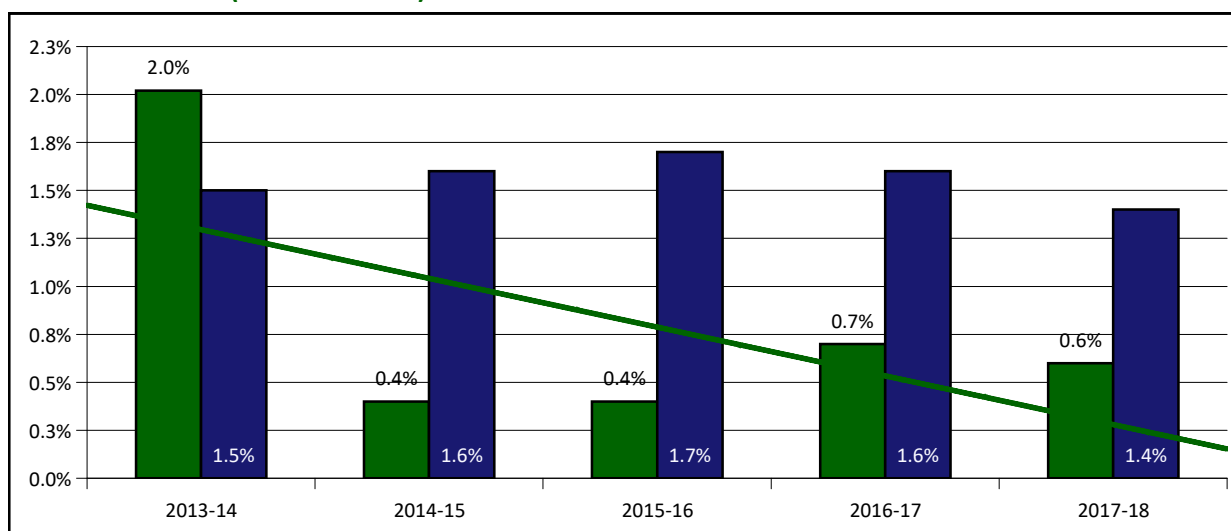


*SOURCE: KSDE KansansCAN Report Card / Performance Indicators

CHRONICALLY ABSENT BY DISAGGREGATED GROUP:

YEAR	MALE	FEMALE	FRL	SpEd	WHITE	AFRICAN-AMERICAN	HISPANIC	MULTI-RACE	NATIVE AMERICAN
2017-18	13.08	14.78	20	18.18	13.01	20	25.93	15.38	63.64
2018-19	14.47	15.68	21.7	15.09	14.18	45.45	21.21	100	41.67

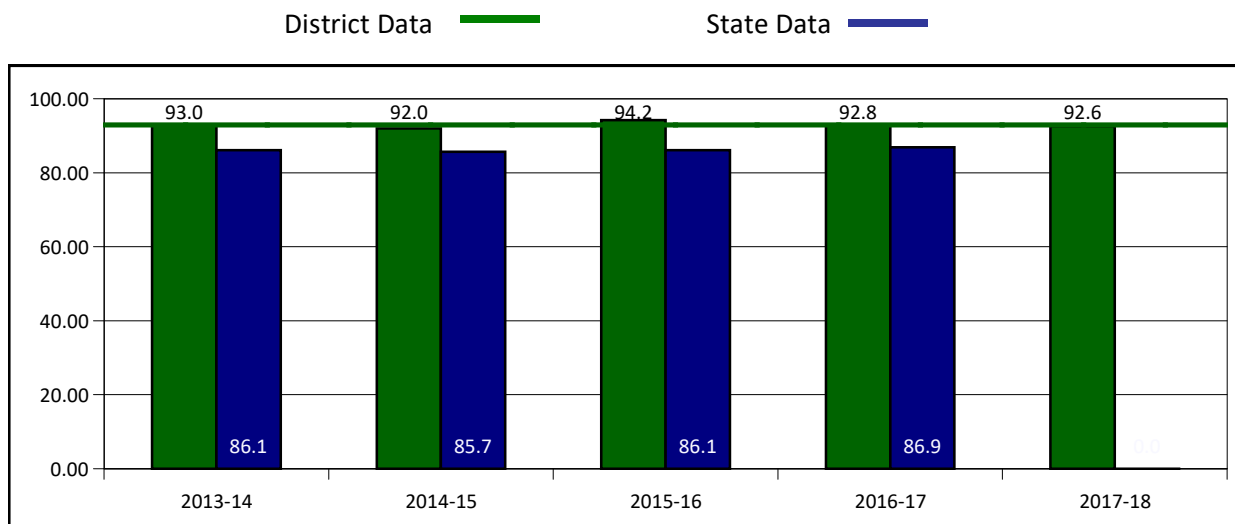
DROPOUT RATES (ALL STUDENTS):



*SOURCE: KSDE K-12 School Reports - Dropouts by Grade, Race, and Gender

College and Career Readiness

4-YEAR COHORT GRADUATION RATES (ALL STUDENTS):



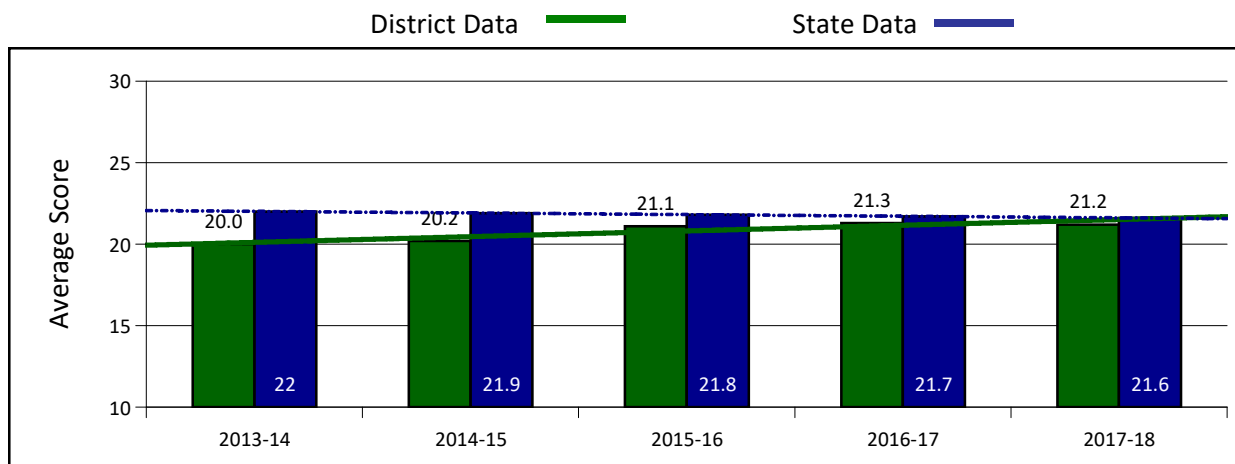
*SOURCE: KSDE Kansans CAN Building Report Card: Graduation Indicators - 4 Year By Subgroup

4-YEAR COHORT GRADUATION RATES BY DISAGGREGATED GROUP:

YEAR	ALL STUDENTS	FRL	SpEd	WHITE	AFRICAN-AMERICAN	HISPANIC	MULTI-RACE	NATIVE AMERICAN	ELL
2012-13	96.2	93.3	100.0	95.8	100.0	100.0		100.0	
2013-14	93.0	87.2	66.7	92.6	0.0	100.0	0.0	100.0	0.0
2014-15	92.0	91.8	77.8	91.7		100.0	100.0	100.0	
2015-16	94.2	90.2	77.8	94.8		100.0	100.0	50.0	
2016-17	92.8	90.5	80.0	93.7	0.0	50.0	0.0	100.0	0.0

*Blanks indicate data suppression for <10 students in subgroup.

AVERAGE ACT SCORES:



*SOURCE: KSDE Kansans CAN - ACT Scores

Postsecondary Progress Report

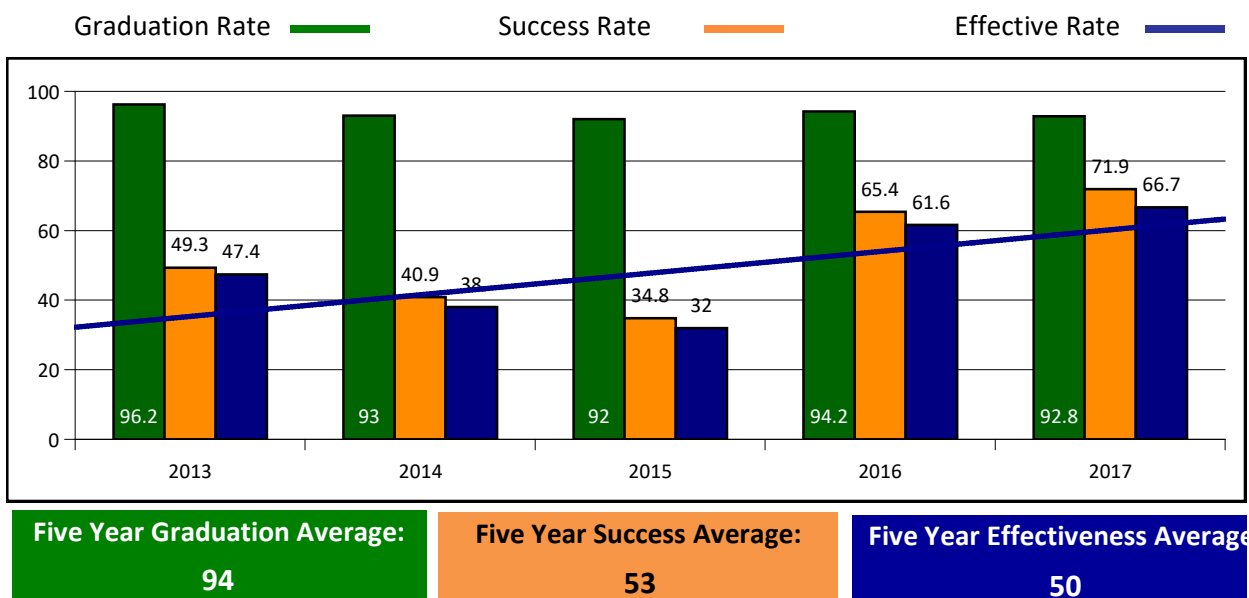
Graduation Rate:

The 4-year adjusted cohort graduation rate is the number of students who graduate in four years with a regular high school diploma divided by the number of students who entered high school as 9th graders four years earlier (adjusting for transfers in and out)

Success Rate: A student must meet one of four within two years of High School graduation

1. Student earned an Industry Recognized Certification while in High School
2. Student earned a Postsecondary Certificate
3. Student earned a Postsecondary Degree
4. Student enrolled in Postsecondary in both the first and second year following High School

Effective Rate: The calculated Graduation Rate multiplied by the calculated Success Rate.



95% Confidence Interval for the Predicted Effectiveness Rate

Lower Bound Upper Bound
45.7 — 47.9

If your district's five-year effectiveness average is within or above the predicted range, then your district effectiveness rates can be considered average, or maybe better than average, when compared to similar districts. On the other hand, if your district's five-year effectiveness average is below this predicted range then its performance is either average or below average.

Relative Performance

How do I know if my district is average, much better or much worse than similar districts?

Estimate of your district's predicted effectiveness rate: 46.8

District Performance Level Category:

Typical or average



For detailed instructions on how to calculate the statistical data shown below, see the "Relative Performance" tab on the KansansCAN Postsecondary Progress Report page.

Reading Assessments Data

ASSESSMENT SCORING EFFECTIVE 2014-15 SCHOOL YEAR

Level 1: Student is not performing at grade-level standards.

Level 2: Student is doing grade-level work as defined by the standards but not at the depth or level of rigor to be considered on-track for college success.

Level 3: Student is performing at expectation for that grade and is on track to being college ready.

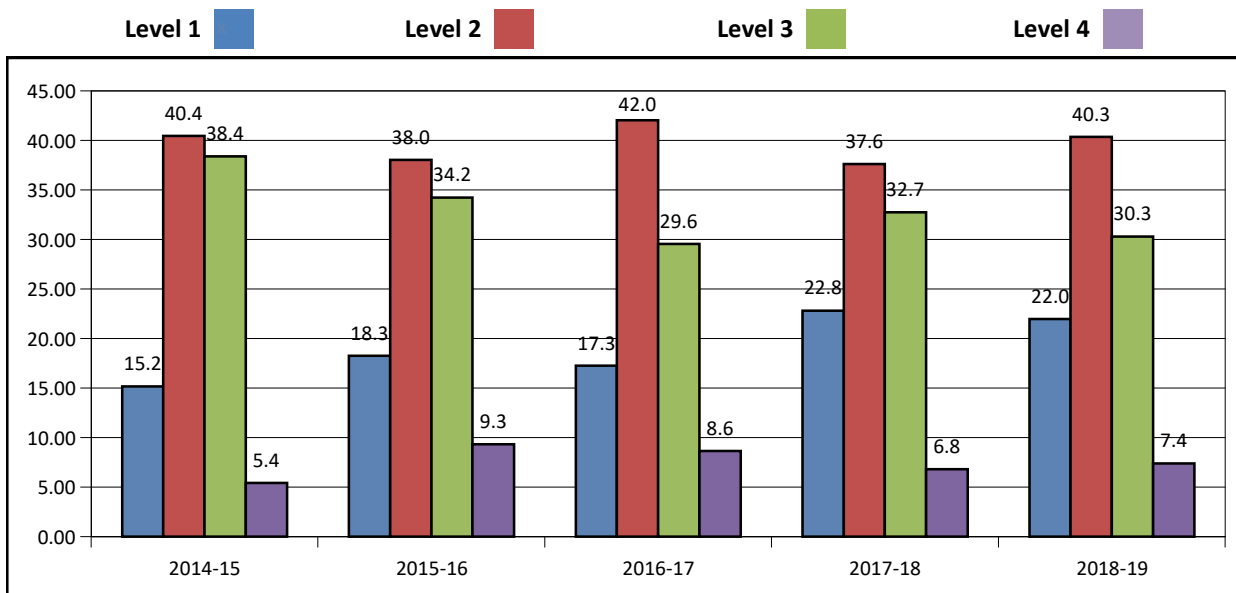
Level 4: Student is performing above expectations and is on-track to being college.

PERCENT SCORING COLLEGE / CAREER READY (ALL STUDENTS)

Numbers below represent the percent of students scoring in Level 3 or Level 4. Groups with less than 10 students assessed for any given grade or year will be blank.

School Year	All USD	3rd	4th	5th	6th	7th	8th	High School
2014-15	43.81	49.99	77.77	48.14	46.15	41.36	24.35	21.62
2015-16	43.53	47.75	54.66	52.04	49.99	43.61	31.02	30.26
2016-17	38.18	55.26	35.12	43.23	49.99	32.19	27.95	25.33
2017-18	39.56	42.30	61.63	38.23	36.35	33.32	30.76	33.72
2018-19	37.68	41.88	41.76	49.99	39.06	25.00	31.81	35.78

PERCENT BY SCORE LEVEL: ALL STUDENTS DISTRICT AVERAGE



SCORES BY SUBGROUP (ALL GRADES)

Numbers below represent the percent of students scoring in Level 3 or Level 4. Groups with less than 10 students assessed for any given year will be blank.

School Year	All USD	All KS	FRL	SpEd	White	African American	Hispanic	Multi-Race
2014-15	43.81	41.02	15.78	16.06	43.72		26.66	78.57
2015-16	43.53	40.14	17.94	17.39	44.46		15.38	33.33
2016-17	38.18	37.2	20.58	19.69	38.84		26.66	
2017-18	39.56	36.86	22.5	30.76	40.15			
2018-19	37.68	36.58		19.22	38.1		12.5	

Math Assessments Data

ASSESSMENT SCORING EFFECTIVE 2014-15 SCHOOL YEAR

Level 1: Student is not performing at grade-level standards.

Level 2: Student is doing grade-level work as defined by the standards but not at the depth or level of rigor to be considered on-track for college success.

Level 3: Student is performing at expectation for that grade and is on track to being college ready.

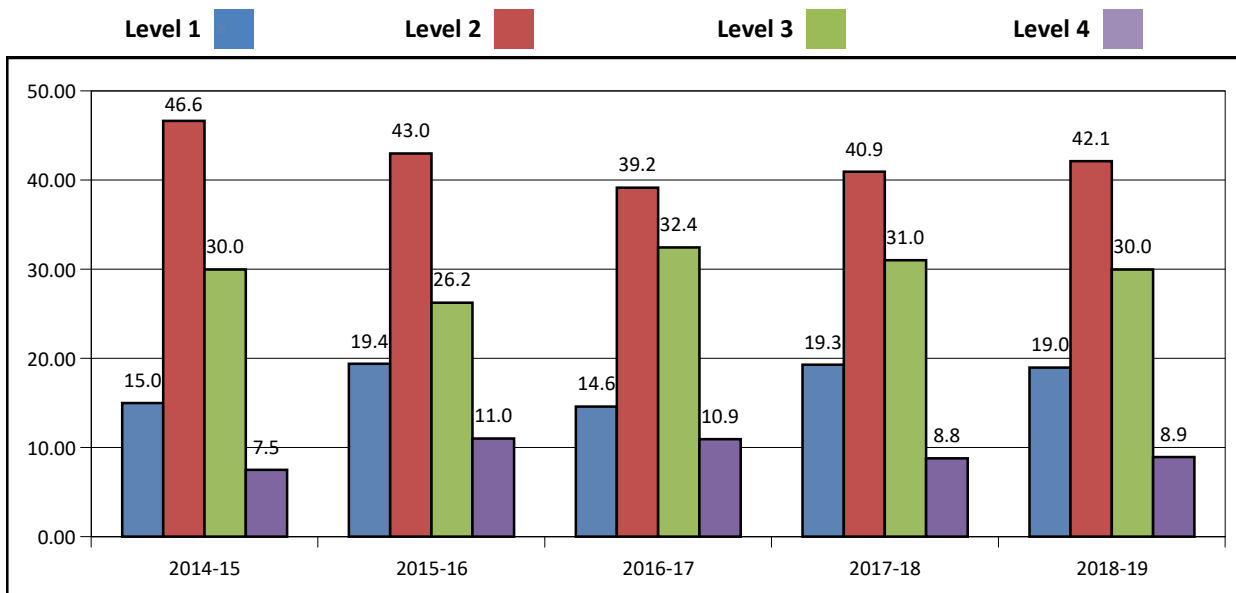
Level 4: Student is performing above expectations and is on-track to being college.

PERCENT SCORING COLLEGE / CAREER READY (ALL STUDENTS)

Numbers below represent the percent of students scoring in Level 3 or Level 4. Groups with less than 10 students assessed for any given grade or year will be blank.

School Year	All USD	3rd	4th	5th	6th	7th	8th	High School
2014-15	37.45	69.22	48.60	25.92	38.45	33.32	30.76	12.16
2015-16	37.25	70.14	46.66	36.97	35.17	29.78	33.32	14.46
2016-17	43.37	67.10	47.29	39.18	47.13	30.50	45.15	23.99
2017-18	39.76	65.37	46.56	47.05	29.86	33.32	32.30	24.09
2018-19	38.89	59.45	41.76	49.99	34.37	18.98	43.93	28.41

PERCENT BY SCORE LEVEL: ALL STUDENTS DISTRICT AVERAGE



SCORES BY SUBGROUP (ALL GRADES)

Numbers below represent the percent of students scoring in Level 3 or Level 4. Groups with less than 10 students assessed for any given year will be blank.

School Year	All USD	All KS	FRL	SpEd	White	African American	Hispanic	Multi-Race
2014-15	37.45	32.24	13.15	16.06	37.04		39.99	57.14
2015-16	37.25	33.43	10.25	15.93	37.9		7.69	33.32
2016-17	43.37	33.28	11.76	16.66	43.95		26.66	
2017-18	39.76	32.85	10	24.35	40.56			
2018-19	38.89	32.64		17.94	38.78		31.25	

District Comparisons

**US Census: American Community Survey
5-Year Data 2018**

**District
365**

**USD 362
Prairie View**

**USD 288
Central Heights**

USD 479 Crest

FAMILY INCOME:

Median Family Income	\$63,500	\$59,926	\$64,524	\$51,063
Mean Family Income	\$71,850	\$65,025	\$77,279	\$63,552
Percent of families with children in poverty	16.1	21.5	13.6	15.6
Percent of households with Public Asst income	2.7	2.2	2.4	1.6
Percent of households with Food Stamp benefits	7.5	5.9	9.5	5.3

EDUCATIONAL ATTAINMENT:

Population over 25 years old - percent

Less than 9th grade	5.2	4.4	1.6	1.1
9th to 12th grade - No Diploma	3.3	5.6	5.2	7.4
High School Diploma or Equivalency	42.3	37.7	42.3	35.1
Bachelor's Degree or More	10.7	10.2	12.1	14

HOUSEHOLD COMPOSITION:

Percent of households that are families	64.7	68.4	73.9	74.4
Average family size	3.21	2.66	2.97	3.02
Married couple families (children under 18)	19.3	14	20.3	16.2
Single parent household- female only	4.5	7	4.1	2.8
Single parent household- male only	1	5.6	3.4	6.3

Kansas State Department of Education Data

HEADCOUNT ENROLLMENT:

Headcount Enrollment (2019-20)	987	852	508	236
Free or reduced lunch students (%)	52.1	48.1	50.2	50.0
FTE Enrollment (2018-19)	977	858	500	211
Student / Teacher Ratio (2018-19)	13.4	13.3	11.0	11.1

FUNDING: 2018-19

Assessed Valuation per Pupil	\$84,123	\$241,667	\$54,783	\$92,854
Expenditure per Pupil	\$14,804	\$17,352	\$15,892	\$15,186

GRADUATION / DROPOUTS:

4-Year Cohort Graduation Rate (2017-18)	92.6	82.8	100	95
Dropout Rate (2017-18)	0.6	4	0.4	1

ASSESSMENTS (% Levels 3 and 4):2018-19

Reading Assessments (All Students)	37.7	29.2	44.8	30.3
Math Assessments (All Students)	38.9	25.6	41.1	22.6



Garnett USD 365

305 N. Oak, Garnett, KS 66032
(785) 448-6155
usd365.org

District Accreditation Status: **Accredited**
ESSA Annual Meaningful Differentiation: **Meeting**
Grades: **PK-12**
Superintendent: **Donald Blome**

Demographics

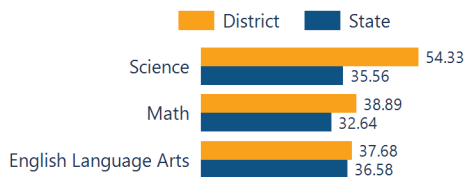


1,006 Students

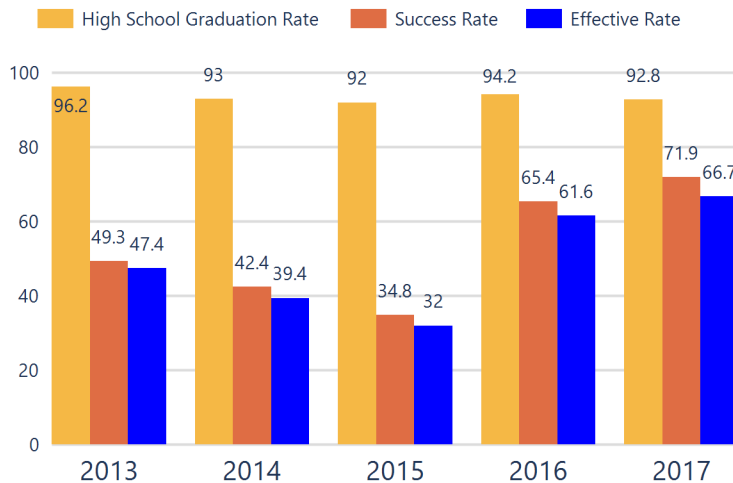
African American 1.09 %
Hispanic 2.78 %
Other 2.09 %
White 94.04 %

Academically Prepared for Postsecondary Success

The percentage of students who scored at Levels 3 and 4 on the state assessment.



District Postsecondary Effectiveness



Kansans CAN
lead the world!
Graduation

95%

Effective Rate 70-75%

Five-Year Graduation Avg

94%

Five-Year Success Avg

53%

Five-Year Effective Avg

50%

95% Confidence Interval
for the Predicted
Effectiveness Rate

45.7 - 47.9%

The numerator
and denominator
in the Five-Year
Averages contain
total student
counts over five
years (2012-2016).

- Graduation Rate:** The 4-year adjusted cohort graduation rate is the number of students who graduate in four years with a regular high school diploma divided by the number of students who entered high school as 9th graders four years earlier (adjusting for transfers in and out).
- Success Rate:** A student must meet one of the four following outcomes within two years of High School graduation.
 - Student earned an Industry Recognized Certification while in High School.
 - Student earned a Postsecondary Certificate.
 - Student earned a Postsecondary Degree.
 - Student enrolled in Postsecondary in both the first and second year following High School graduation.
- Effective Rate:** The calculated Graduation Rate multiplied by the calculated Success Rate.

GRADUATION RATE

The four-year adjusted cohort graduation rate is the percentage of students in a cohort, adjusted for transfers into and out of the school, district, or state, who graduate with a regular high school diploma within four years of entering high school.

ATTENDANCE RATE

Rate at which students are present at school, not including excused or unexcused absences.

CHRONIC ABSENTEEISM

Percentage of students who miss 10% or more of school days per year either with or without a valid excuse.

DROPOUT RATE

The dropout rate is calculated annually and reflects the number of seventh–twelfth grade students who drop out in any one school year. A dropout is any student who exits school between October 1 and September 30 with a dropout EXIT code AND does not re-enroll in school by September 30.

95.9%

State: **District ESSA Expenditures Per Pupil**
87.5

Expenditures reflect those for the normal day-to-day operation of schools as reported by the Local Education Agency. The following expenditures are excluded: capital outlay, school construction and building improvements, equipment and debt services.

\$11,924

State:
\$11,415

94.0%

State:
94.5

15.0%

State:
13.9

[Click here for State Financial Accountability.](#)

0.4%

State:
1.4



District Academic Success

State Assessment scores are displayed by student subgroup over three years time in three subjects: Math, English Language Arts (ELA), and Science.

ALL STUDENTS

	2016-17			2017-18			2018-19		
	Math	ELA	Sci	Math	ELA	Sci	Math	ELA	Sci
Level 1	14.58	17.27	14.57	19.29	22.80	21.63	18.97	21.96	20.54
Level 2	39.15	42.03	30.36	40.93	37.62	35.09	42.12	40.34	25.11
Level 3	32.43	29.55	34.41	30.99	32.74	26.44	29.98	30.30	34.70
Level 4	10.94	8.63	17.40	8.77	6.82	16.82	8.91	7.38	19.63

FREE AND REDUCED LUNCH STUDENTS

	2016-17			2017-18			2018-19		
	Math	ELA	Sci	Math	ELA	Sci	Math	ELA	Sci
Level 1	20.07	23.62	21.73	23.28	30.15	32.97	23.62	27.84	26.92
Level 2	48.42	46.85	35.65	48.09	39.31	37.23	47.63	43.92	27.88
Level 3	22.04	23.22	31.30	25.57	27.86	22.34	24.40	22.35	29.80
Level 4	6.69	3.54	10.43	3.05	2.67	7.44	4.33	5.88	15.38

STUDENTS WITH DISABILITIES

	2016-17			2017-18			2018-19		
	Math	ELA	Sci	Math	ELA	Sci	Math	ELA	Sci
Level 1	33.33	40.90	42.85	35.89	41.02	40.90	41.02	44.87	46.15
Level 2	39.39	30.30	21.42	39.74	28.20	36.36	41.02	35.89	30.76
Level 3	12.12	18.18	14.28	19.23	25.64	22.72	17.94	15.38	15.38
Level 4	4.54	1.51	0.00	5.12	5.12	0.00	0.00	3.84	7.69

AFRICAN-AMERICAN STUDENTS

	2016-17			2017-18			2018-19		
	Math	ELA	Sci	Math	ELA	Sci	Math	ELA	Sci
Level 1	N/A	N/A	N/A	N/A	N/A	N/A	N/A	N/A	N/A
Level 2	N/A	N/A	N/A	N/A	N/A	N/A	N/A	N/A	N/A
Level 3	N/A	N/A	N/A	N/A	N/A	N/A	N/A	N/A	N/A
Level 4	N/A	N/A	N/A	N/A	N/A	N/A	N/A	N/A	N/A

HISPANIC STUDENTS

	2016-17			2017-18			2018-19		
	Math	ELA	Sci	Math	ELA	Sci	Math	ELA	Sci
Level 1	20.00	20.00	N/A	N/A	N/A	N/A	12.50	31.25	N/A
Level 2	53.33	53.33	N/A	N/A	N/A	N/A	56.25	56.25	N/A
Level 3	26.66	26.66	N/A	N/A	N/A	N/A	31.25	12.50	N/A
Level 4	0.00	0.00	N/A	N/A	N/A	N/A	0.00	0.00	N/A

N/A: To protect student privacy, when a subgroup has fewer than 10 students, the data are not displayed.

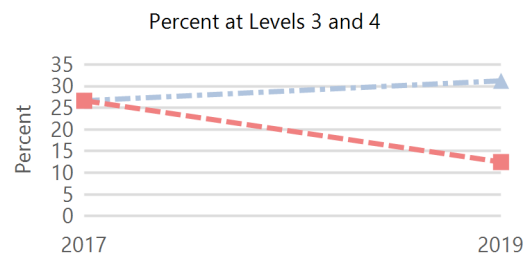
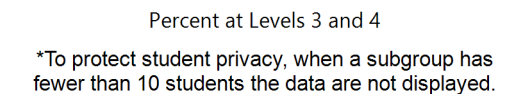
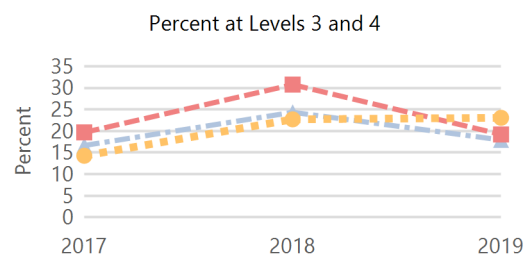
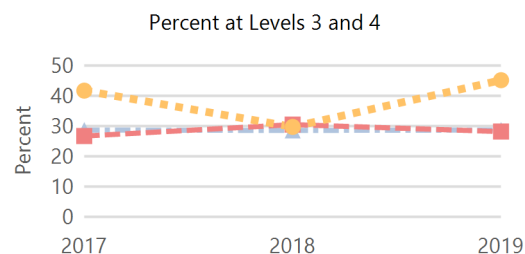
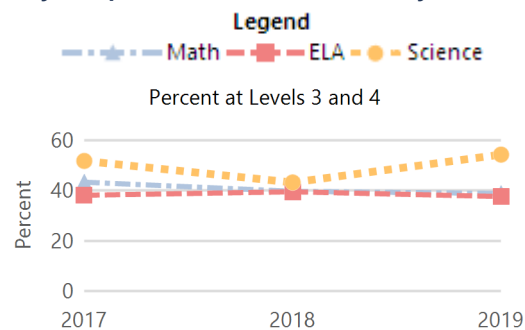
ACT Performance (2018 School Year)

ACT is a national college admissions exam that includes subject level tests in English, Math, Reading and Science. Students receive scores that range from 1 to 36 on each subject and an overall Composite score. This report provides the average Composite score for the 2018 graduating seniors who took the ACT as sophomores, juniors, or seniors.

Note: Not all eligible students completed an ACT.



Academically Prepared for Postsecondary Success



District	21.2
State	21.6